



\*The completed size of this work is 147mm x 210mm.  
\*The frame is not included in the pattern of this work. Please download the frame for 147mm x 210mm.

## Assembly

**You will need:** Scissors, glue, ruler, a used ball-point pen

**Assembly tip:** Tracing along fold lines using a ruler and a dried-up pen will make folding easier, and result in sharper folds.

**Notation Key:** - - - - - Mountain fold    - · - - - - Valley fold    ——— Cut line

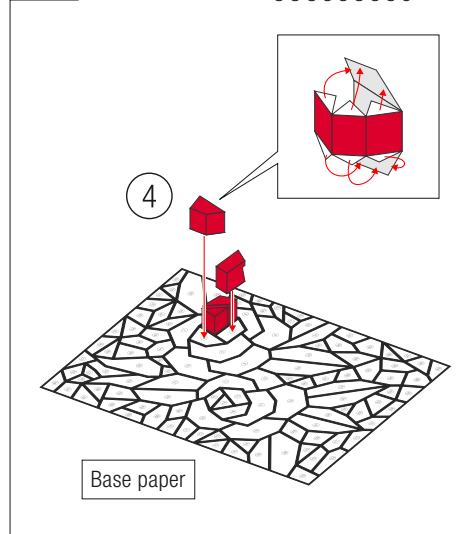
● Glue tab      ① Glue tabs with numbers  
(Refer to the assembly instructions on the right.)



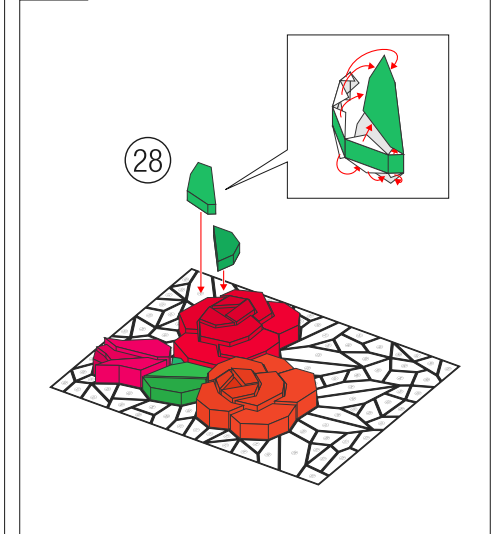
**Warning:** This craft requires the use of adhesives, scissors and other utensils which could be dangerous to small children. Please be sure to keep them away from children while you work.

## Assembly Instructions

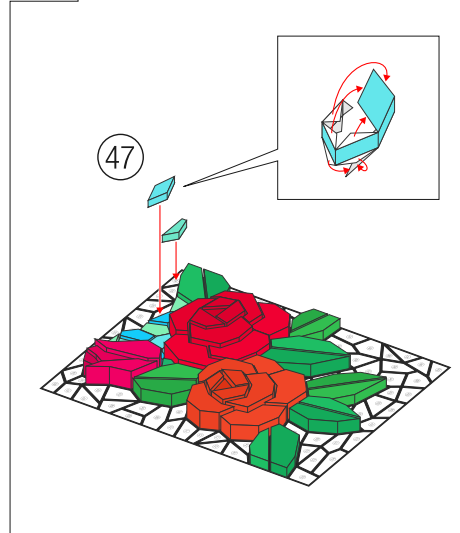
**1** Assemble each part from ① to ①⑤, and glue them to the base paper in numerical order.



**2** ① to ③⑨ are parts for the rose petals (24 pieces) and leaves (15 pieces).

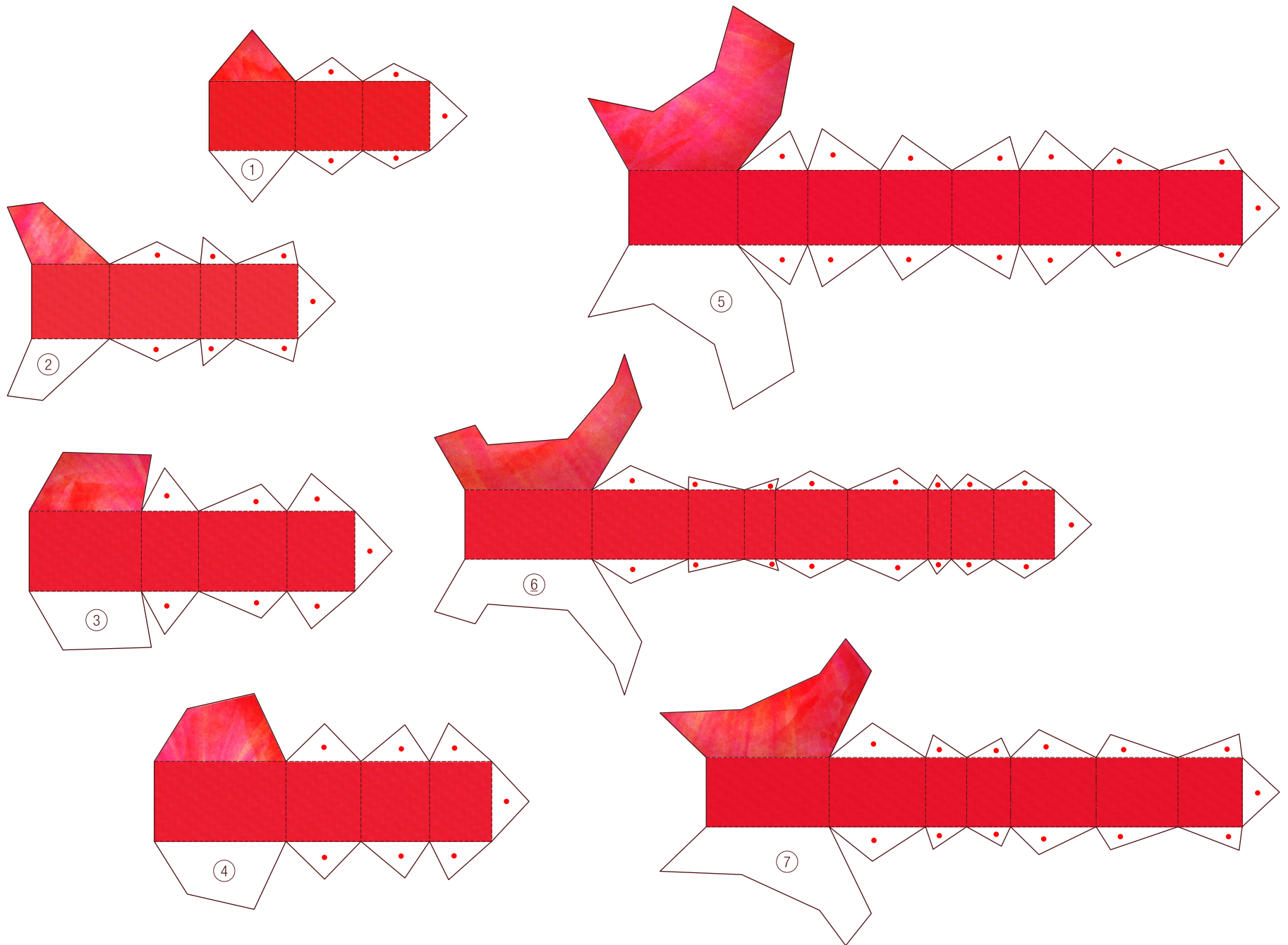


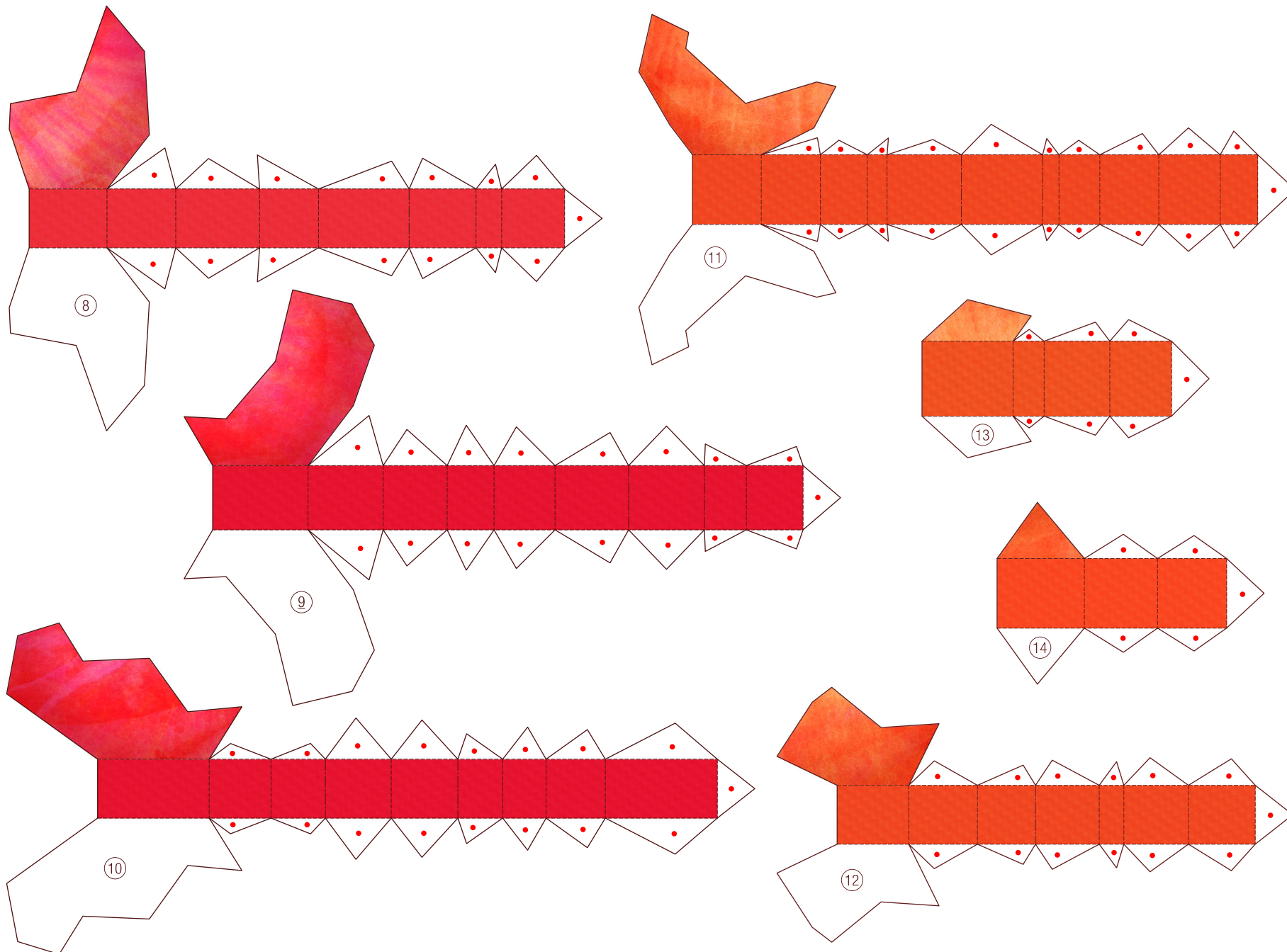
**3** ④① to ④⑤ are parts for the background (76 pieces).

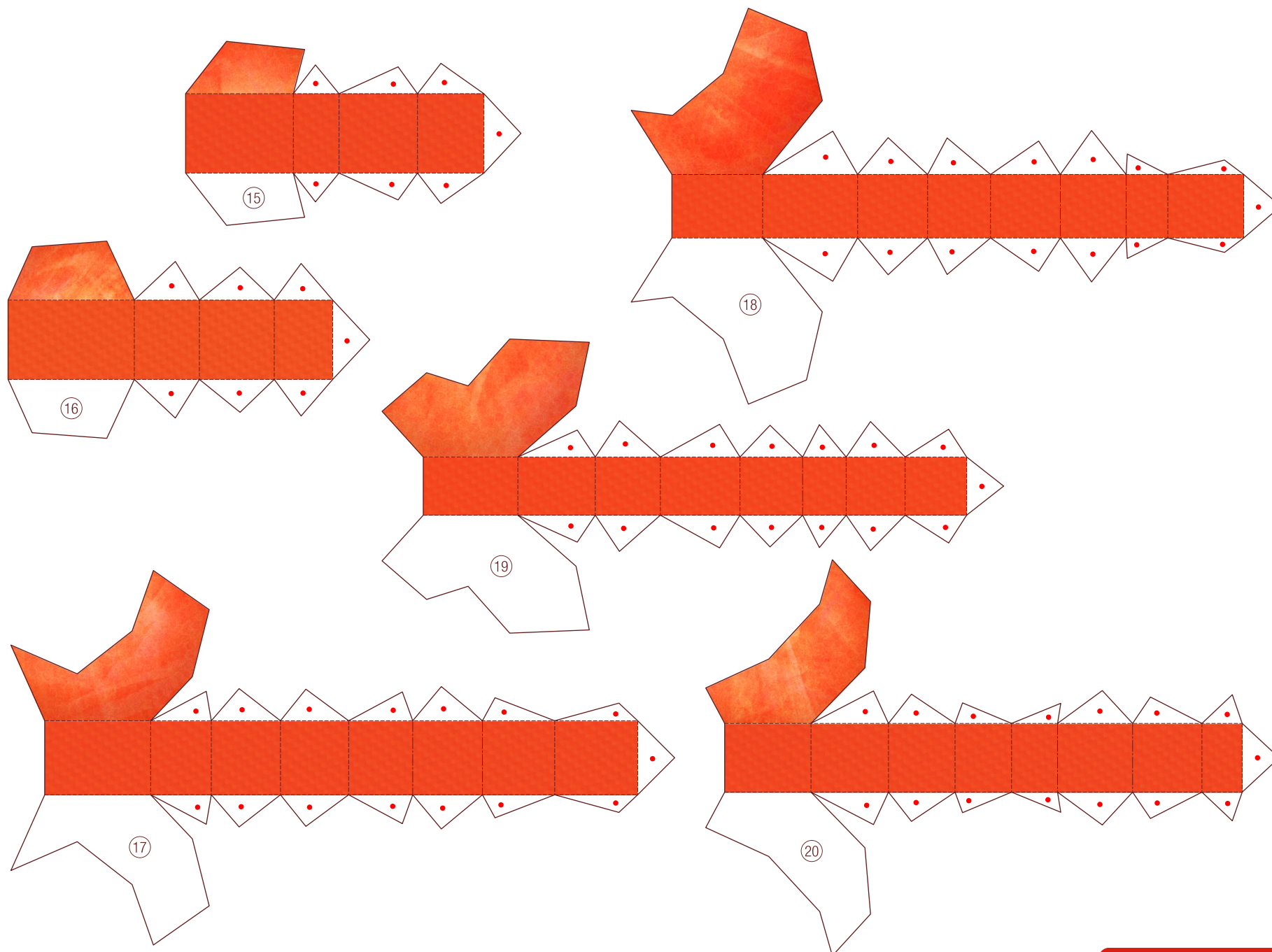


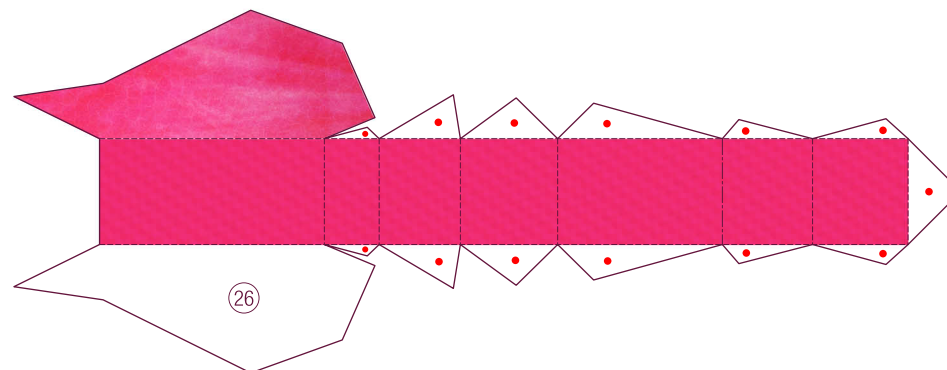
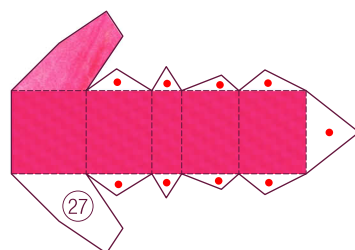
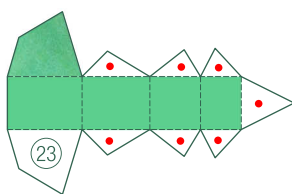
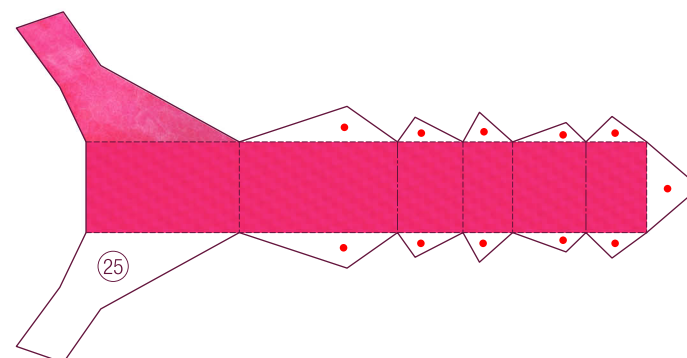
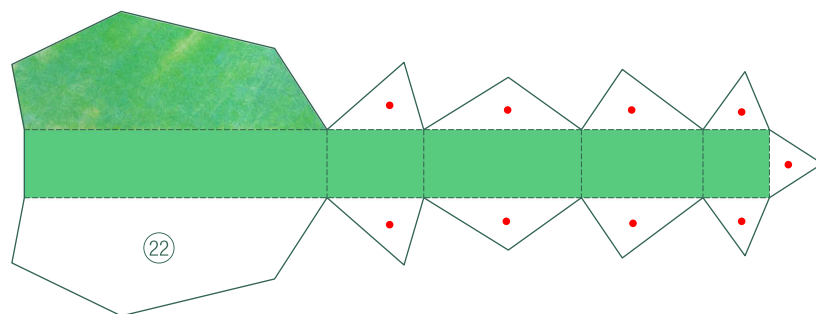
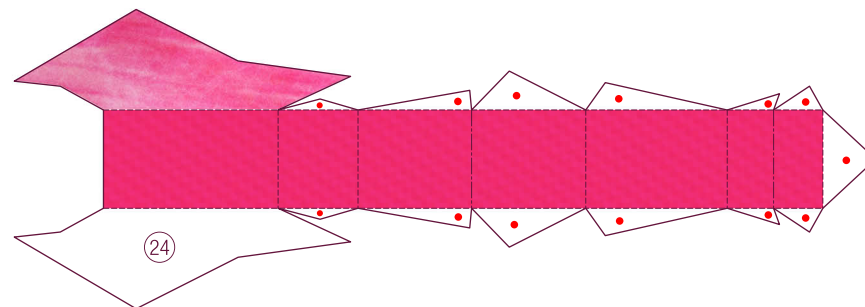
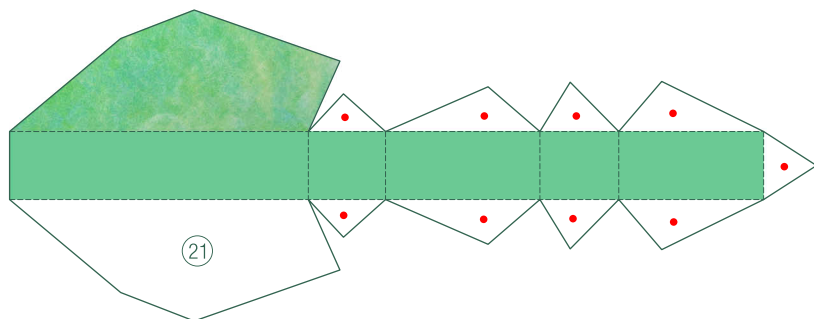
**4** Glue all 115 parts, and you're done! Hang it up for display in a frame.

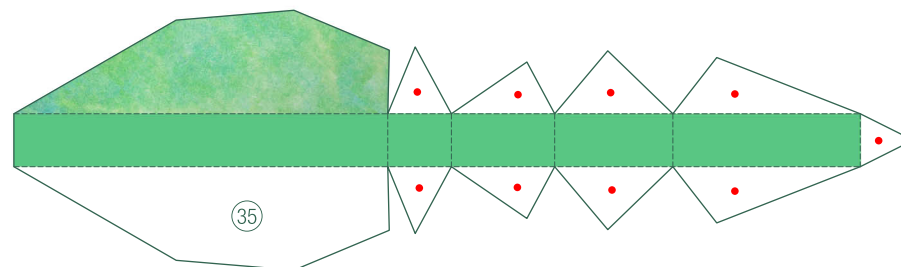
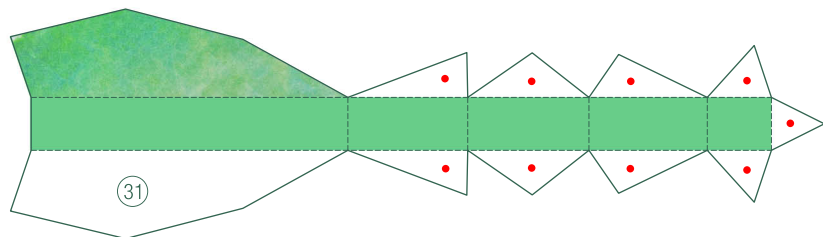
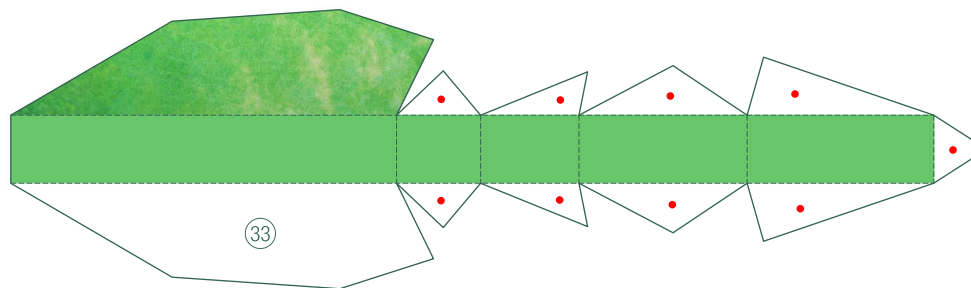
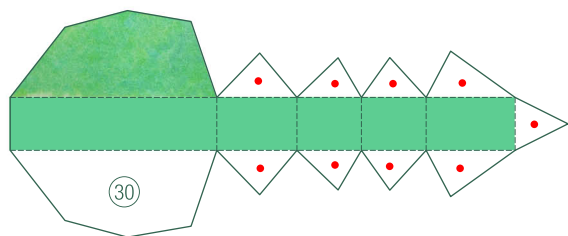
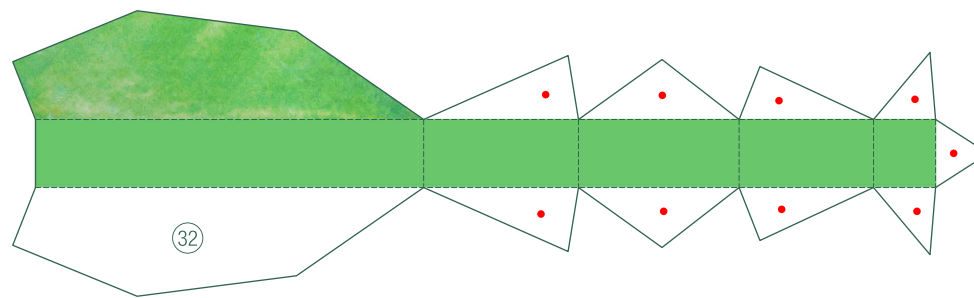
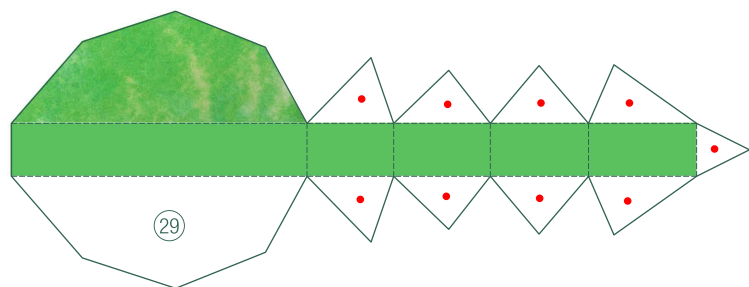
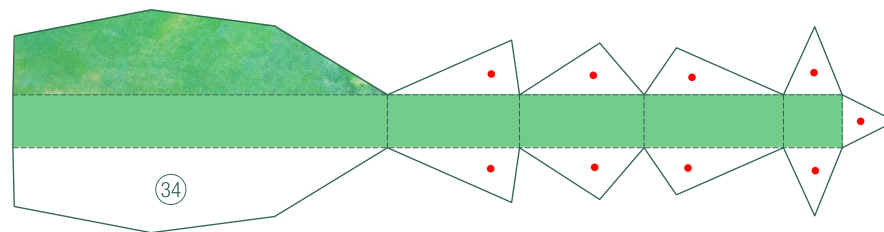
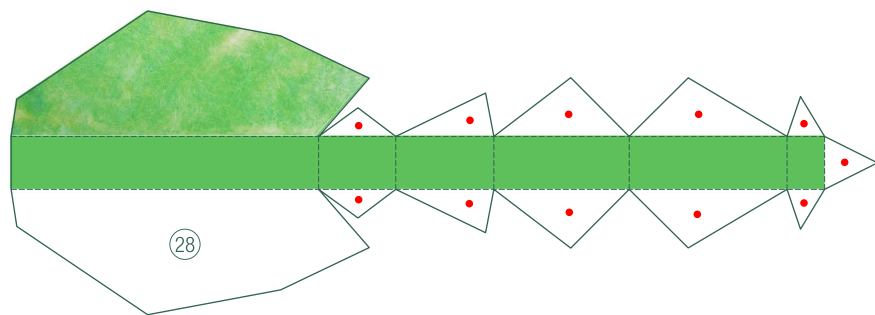


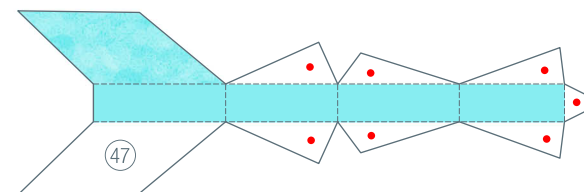
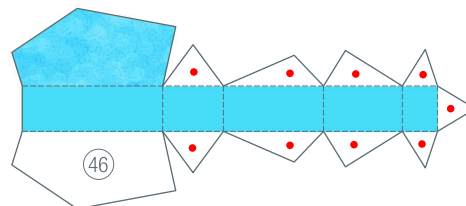
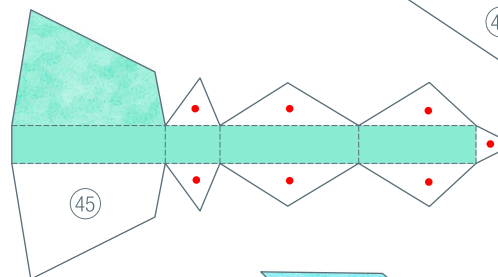
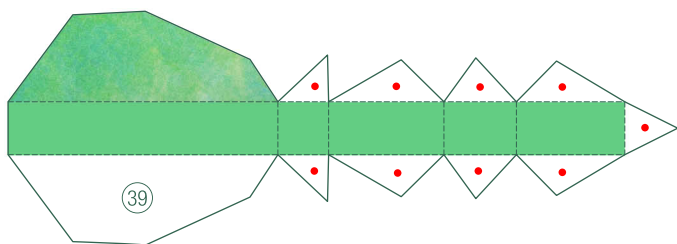
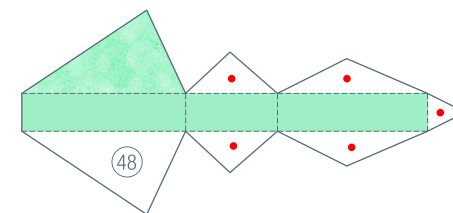
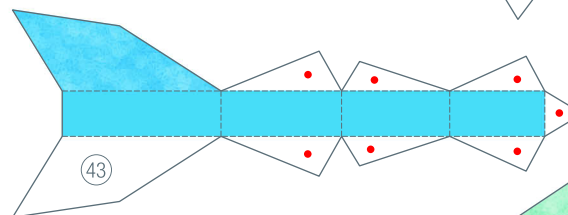
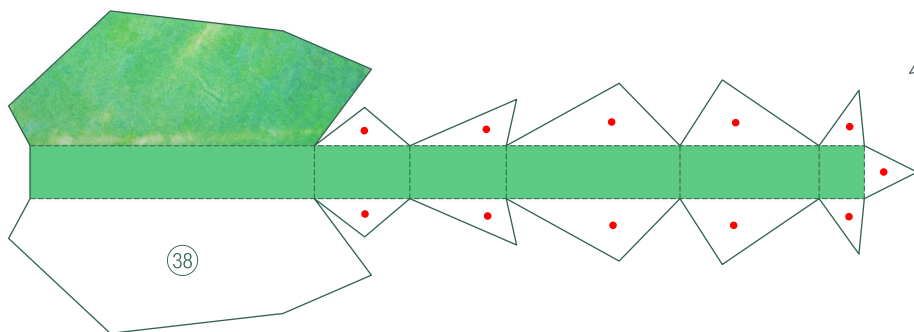
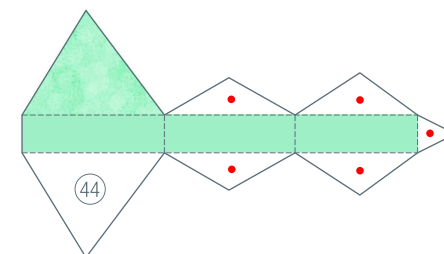
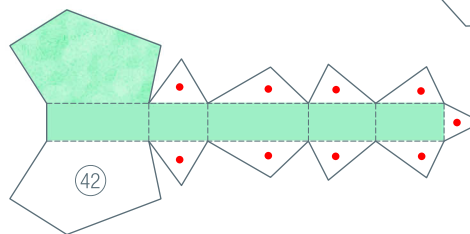
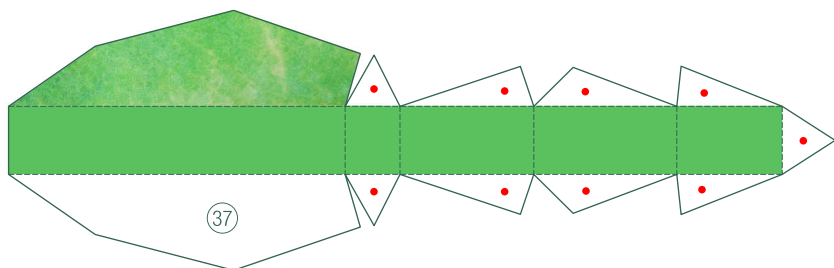
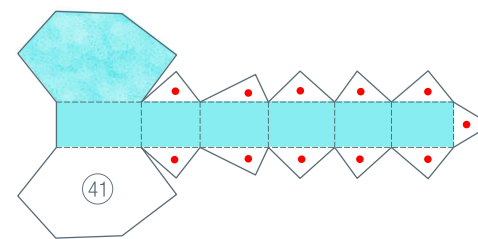
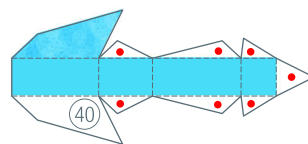
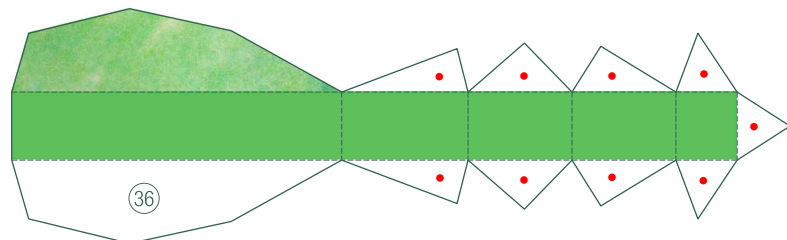


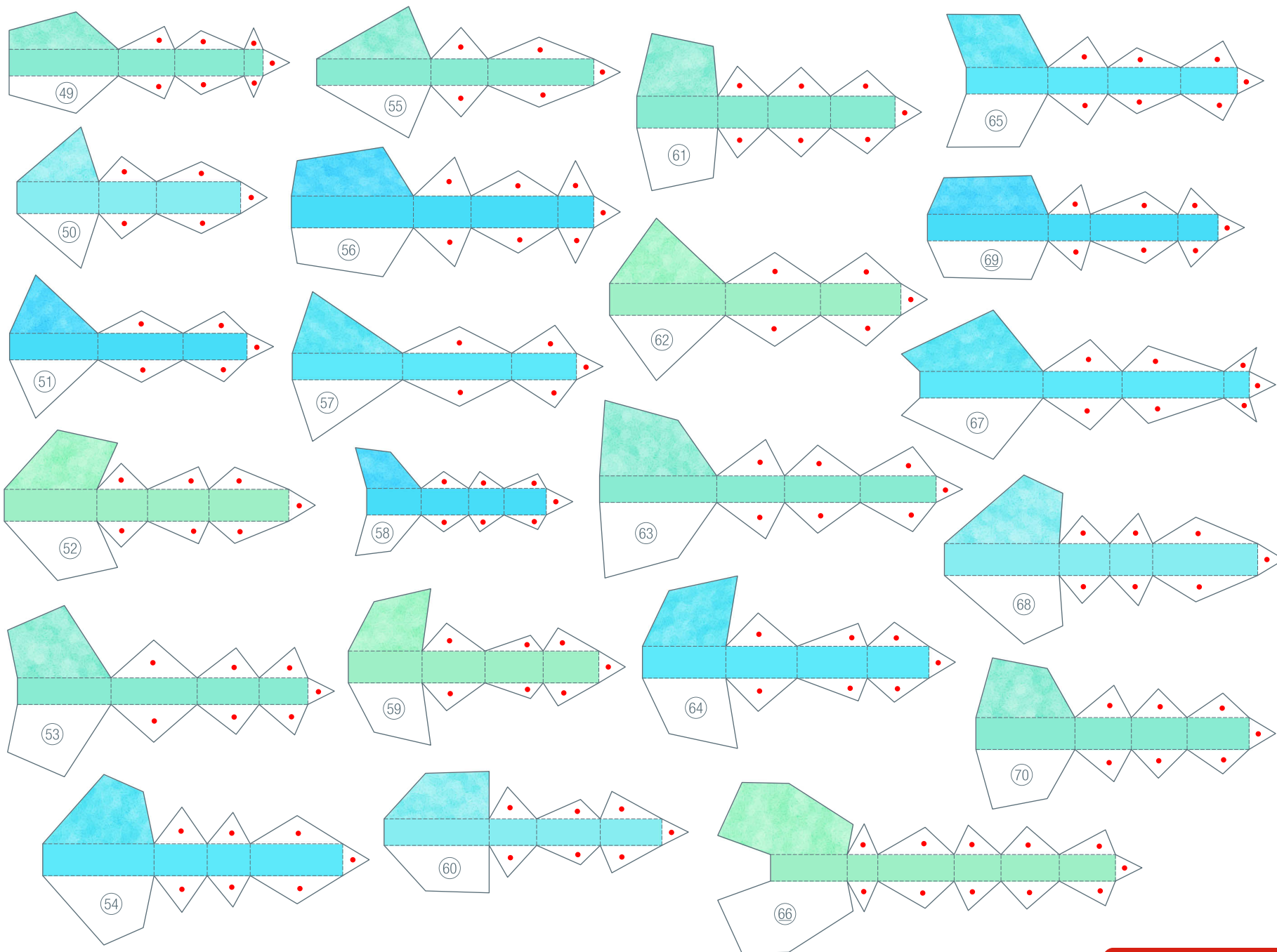




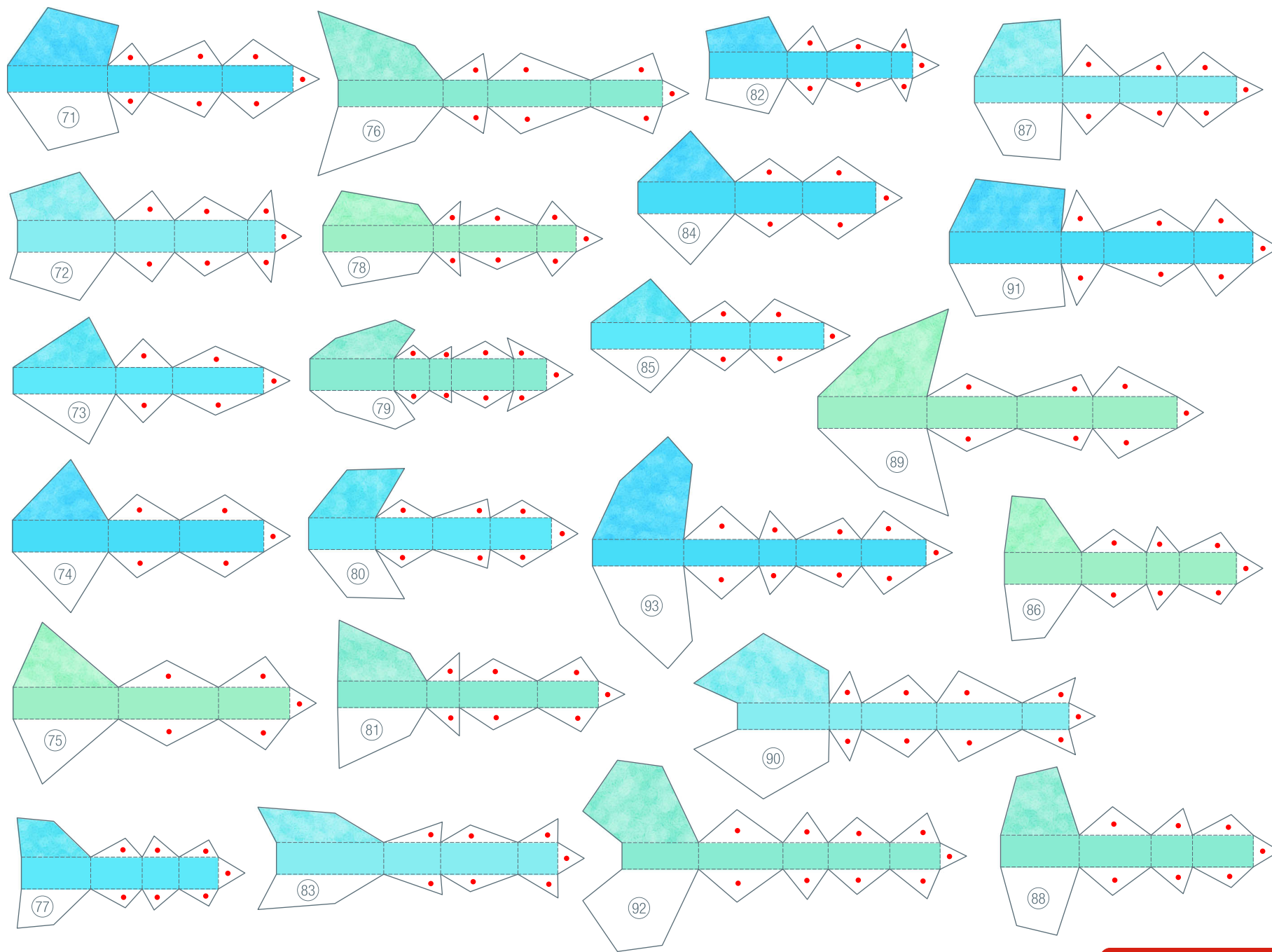


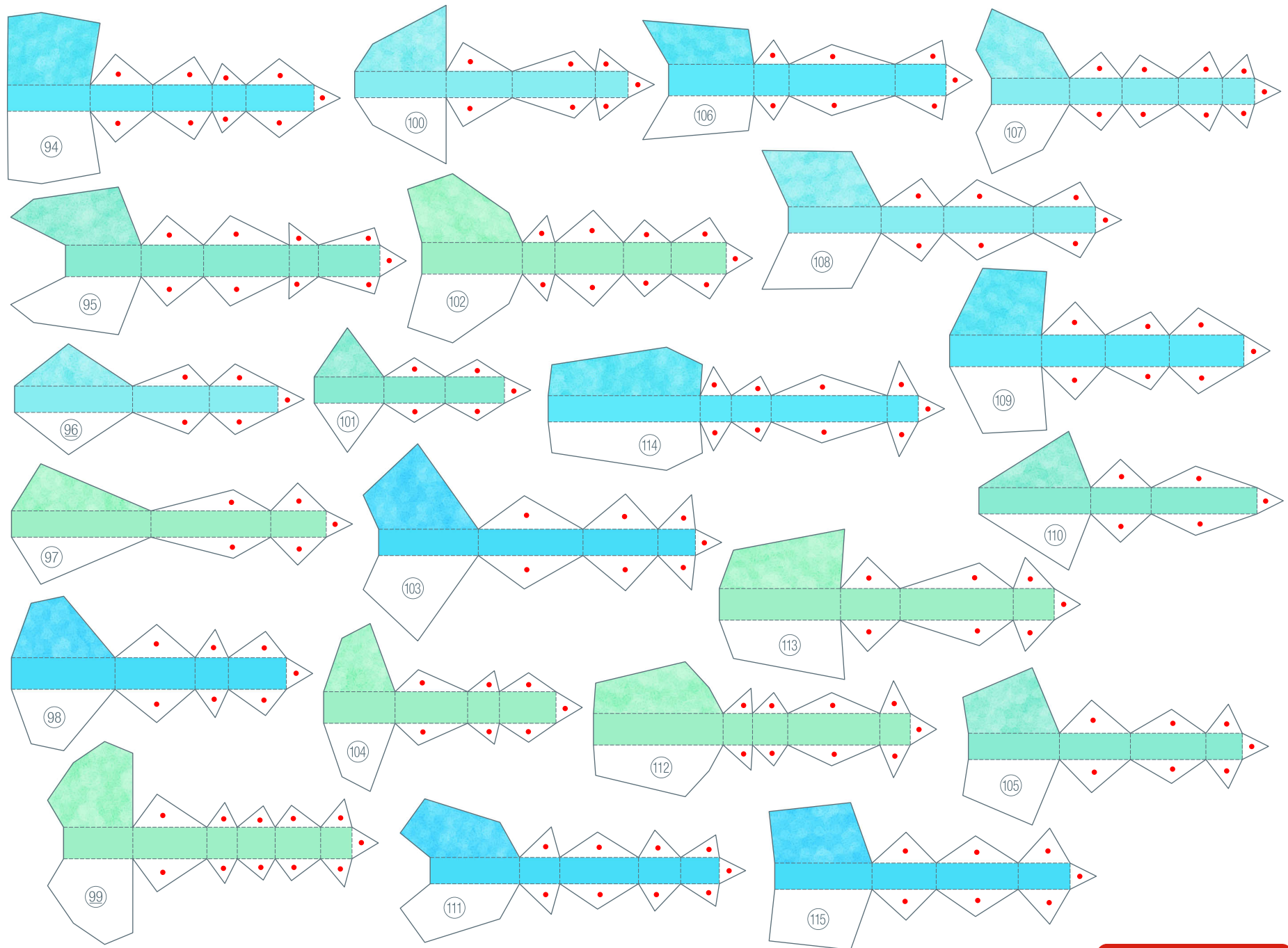












Base Paper

