

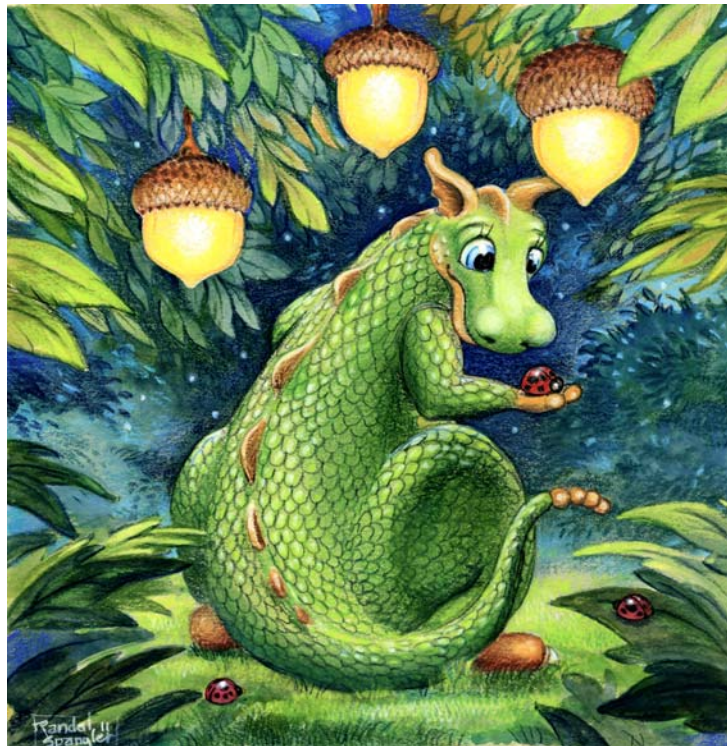
# Heaven and Earth Designs

## Its Good To Be Green

Chart No: HAERS 108

Chart Design By Michele Sayetta

Artwork by Randal Spangler



Finished Design Size 350 W by 358 H (14 W X 14-1/4 H inches on 25ct fabric)  
(This Chart Contains 90 Colors)

Heaven and Earth Designs LLC ®

33555 Wild Daffodil Ln.

Warrenton OR. 97146

320-214-7998

[www.heavenandearthdesigns.com](http://www.heavenandearthdesigns.com)

Copyright Heaven and Earth Designs 2012

Copyright Randal Spangler 2012

Congratulations on buying a **Heaven and Earth Designs LLC** Cross Stitch Chart .

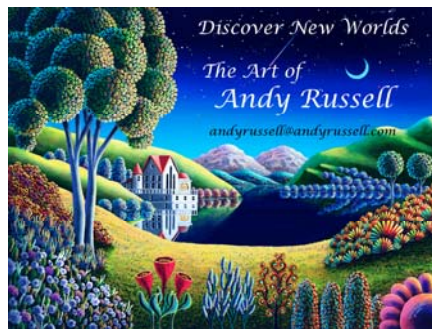
We know it will bring you many hours of pleasurable stitching and believe the final result will be something to love and admire forever.

Included with your chart is a clear plastic bag to protect your chart, and a coded thread list for the threads you will need to complete your project. Our charts are designed to use DMC stranded cotton threads and, where appropriate, Kreinik metallic thread.

**Chart Instructions:**

1. This chart is made up of several numbered pages beginning at the top left corner of the first page. The pages of chart are laid out from left to right in rows e.g. 1 2 3 4, 5 6 7 8. Although each chart is marked with arrows which indicate the centre , we believe you will find it easier to begin from the top left corner of page 1 and follow the chart page by page to the bottom right corner of the last page.
2. We recommend you stitch your design on either 18 count Aida or 25 count Linen. using 2 strands of cotton over one in each case.
3. At the top of the thread list you will find our recommendation for the fabric colour. We recommend purchasing a piece of fabric that equates to the design size plus 3 inches [75mm] all around, to allow for framing and matting.
4. Because of the large number of stitches, we have found it to be easier if you stitch one 10X10 grid at a time and then continue on to the next 10 x 10 grid.
5. Stitch each page until it is completed and then move on to the next. On each page there is a number at the top left that indicates the page number. On each corner is a number in parenthesis that indicates the connecting page, unless there is not one.
6. Under International Copyright Laws, you may copy the chart for your own use. We recommend that you use a copy as your working document. You may also wish to enlarge the pages to make the symbols easier to read.

**If you have any questions regarding this chart please feel free to contact us.**



Heaven and Earth Designs LLC

320-214-7998

<http://www.heavenandearthdesigns.com>

Pattern Name: Its Good To Be Green-Spangler

Designed By: Michele Sayetta

Company: Heaven and Earth Designs LLC

Copyright: 2012 ®

Fabric: Linen 25, White

















350w X 358h Stitches

Size: 25 Count, 14w X 14-1/4h in

### Floss Used for Full Stitches:

Symbol	Strands	Type	Number	Color
□	z	2	DMC 032	Kreinik #4
■	⊕	2	DMC 150	Dusty Rose-ULVYDK
■	⊗	2	DMC 164	Forest Green-LT
■	☆	2	DMC 165	Moss Green-VYLT
■	#	2	DMC 309	Rose-DK
■	⌈	2	DMC 310	Black
■	⊛	2	DMC 311	Navy Blue-MD
■	♡	2	DMC 317	Pewter Gray
■	‡	2	DMC 320	Pistachio Green-MD
■	⊕	2	DMC 327	Violet-VYDK
■	⊗	2	DMC 349	Coral-DK
■	◆	2	DMC 372	Mustard-LT
■	e	2	DMC 420	Hazelnut Brown-DK
■	s	2	DMC 434	Brown-LT
■	≡	2	DMC 435	Brown-VYLT
■	↑	2	DMC 470	Avocado Green-LT
■	∨	2	DMC 471	Avocado Green-VYLT
■	⊗	2	DMC 472	Avocado Green-ULLT
■	⌈	2	DMC 498	Christmas Red-DK
■	⊕	2	DMC 501	Blue Green-DK
■	⊗	2	DMC 502	Blue Green
■	≡	2	DMC 503	Blue Green-MD
■	×	2	DMC 517	Wedgewood-DK
■	♣	2	DMC 518	Wedgewood-LT
■	↓	2	DMC 520	Fern Green-DK
■	⊕	2	DMC 550	Violet-VYDK
■	⊗	2	DMC 561	Jade-VYDK
■	↓	2	DMC 562	Jade-MD
■	∪	2	DMC 580	Moss Green-DK
■	⊕	2	DMC 597	Turquoise
■	∪	2	DMC 598	Turquoise-LT
■	⊕	2	DMC 677	Old Gold-VYLT

Symbol	Strands	Type	Number	Color
	2	DMC	702	Kelly Green
	2	DMC	703	Chartreuse
	2	DMC	704	Chartreuse-BRT
	2	DMC	726	Topaz-LT
	2	DMC	729	Old Gold-MD
	2	DMC	743	Yellow-MD
	2	DMC	744	Yellow-Pale
	2	DMC	745	Yellow-LT Pale
	2	DMC	758	Terra Cotta-VY LT
	2	DMC	779	Cocoa-DK
	2	DMC	796	Royal Blue-DK
	2	DMC	798	Delft Blue-DK
	2	DMC	803	Baby Blue-UL VYDK
	2	DMC	807	Peacock Blue
	2	DMC	820	Royal Blue-VYDK
	2	DMC	823	Navy Blue-DK
	2	DMC	824	Blue-VYDK
	2	DMC	825	Blue-DK
	2	DMC	833	Golden Olive-LT
	2	DMC	890	Pistachio Green-ULDK
	2	DMC	895	Hunter Green-VYDK
	2	DMC	902	Garnet-VYDK
	2	DMC	904	Parrot Green-VYDK
	2	DMC	905	Parrot Green-DK
	2	DMC	921	Copper
	2	DMC	930	Antique Blue-DK
	2	DMC	938	Coffee Brown-ULDK
	2	DMC	939	Navy Blue-VYDK
	2	DMC	986	Forest Green-VYDK
	2	DMC	987	Forest Green-DK
	2	DMC	988	Forest Green-MD
	2	DMC	989	Forest Green
	2	DMC	992	Aquamarine-MD
	2	DMC	993	Aquamarine-LT
	2	DMC	995	Electric Blue-DK
	2	DMC	996	Electric Blue-MD
	2	DMC	3012	Khaki Green-MD
	2	DMC	3031	Mocha Brown-VYDK
	2	DMC	3052	Green Gray-MD
	2	DMC	3346	Hunter Green
	2	DMC	3348	Yellow Green-LT
	2	DMC	3363	Pine Green-MD

Symbol	Strands	Type	Number	Color
	3	2	DMC 3750	Antique Blue-VYDK
	2	2	DMC 3760	Wedgewood-MD
	9	2	DMC 3766	Peacock Blue-LT
	m	2	DMC 3776	Mahogany-LT
	2	2	DMC 3787	Brown Gray-DK
	H	2	DMC 3799	Pewter Gray-VYDK
	>	2	DMC 3808	Turquoise-UL VYDK
	⌘	2	DMC 3810	Turquoise-DK
	2	2	DMC 3815	Celadon Green-DK
	√	2	DMC 3816	Celadon Green-MD
	H	2	DMC 3818	Emerald Green-UL VYDK
	+	2	DMC 3819	Moss Green-LT
	▲	2	DMC 3822	Straw-LT
	«	2	DMC 3835	Grape-MD
	▲	2	DMC 3857	Rosewood-DK
	∇	2	DMC 3859	Rosewood-LT

## Usage Summary

Strands Per Skein: 6

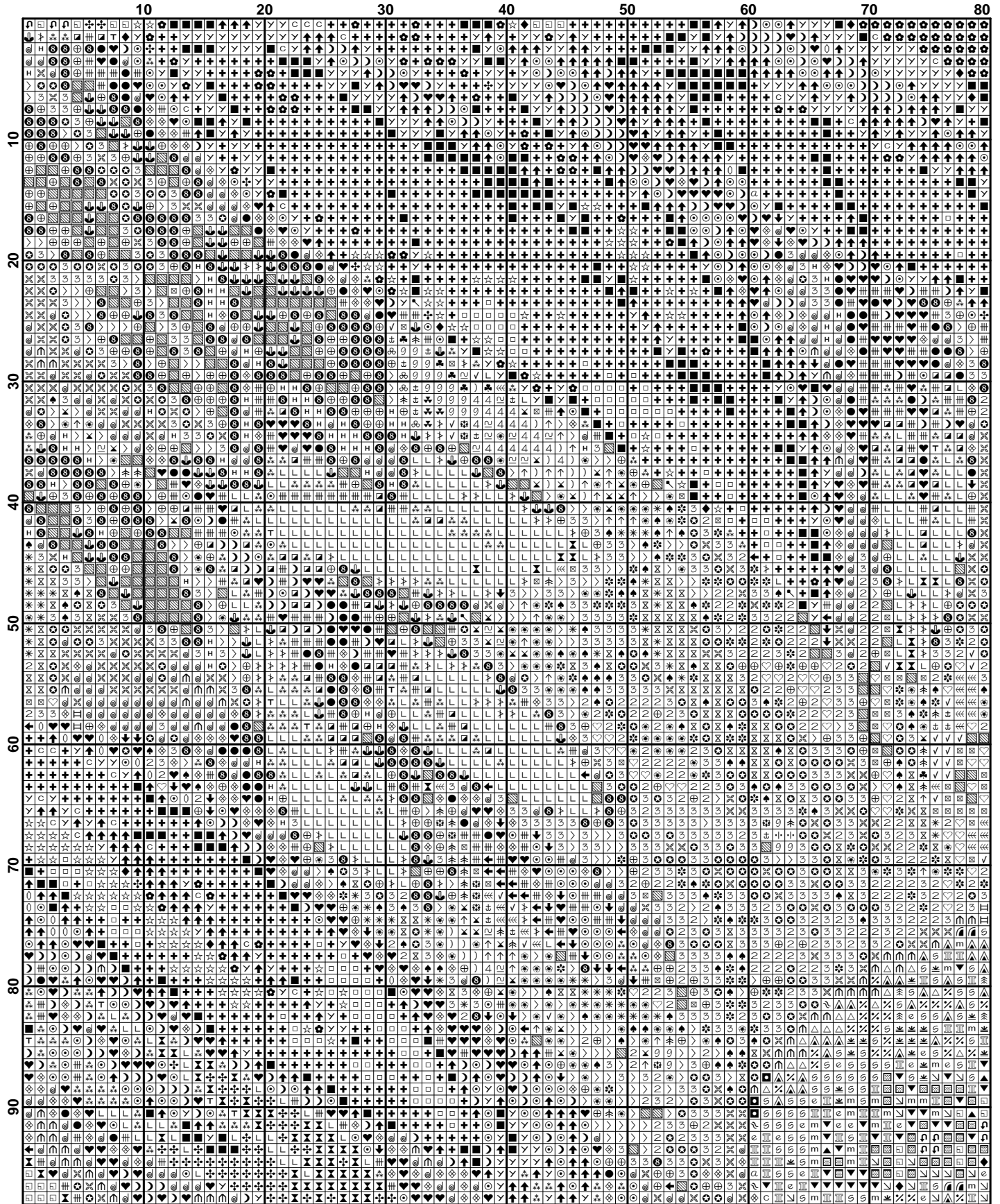
Skein Length: 313.0 in

Type	Number	Full	Half	Quarter	Petite	Back(in)	Str(in)	Spec(in)	French	Bead	Skein Est.
□ DMC 032	895	0	0	0	0	0.0	0.0	0.0	0	0	1.000
■ DMC 150	34	0	0	0	0	0.0	0.0	0.0	0	0	1.000
■ DMC 164	1146	0	0	0	0	0.0	0.0	0.0	0	0	1.000
■ DMC 165	2112	0	0	0	0	0.0	0.0	0.0	0	0	1.000
■ DMC 309	20	0	0	0	0	0.0	0.0	0.0	0	0	1.000
■ DMC 310	7001	0	0	0	0	0.0	0.0	0.0	0	0	2.000
■ DMC 311	637	0	0	0	0	0.0	0.0	0.0	0	0	1.000
■ DMC 317	248	0	0	0	0	0.0	0.0	0.0	0	0	1.000
■ DMC 320	805	0	0	0	0	0.0	0.0	0.0	0	0	1.000
■ DMC 327	7	0	0	0	0	0.0	0.0	0.0	0	0	1.000
■ DMC 349	27	0	0	0	0	0.0	0.0	0.0	0	0	1.000
■ DMC 372	736	0	0	0	0	0.0	0.0	0.0	0	0	1.000
■ DMC 420	707	0	0	0	0	0.0	0.0	0.0	0	0	1.000
■ DMC 434	925	0	0	0	0	0.0	0.0	0.0	0	0	1.000
■ DMC 435	887	0	0	0	0	0.0	0.0	0.0	0	0	1.000
■ DMC 470	2422	0	0	0	0	0.0	0.0	0.0	0	0	1.000
■ DMC 471	2016	0	0	0	0	0.0	0.0	0.0	0	0	1.000
■ DMC 472	3308	0	0	0	0	0.0	0.0	0.0	0	0	1.000
■ DMC 498	91	0	0	0	0	0.0	0.0	0.0	0	0	1.000
■ DMC 501	2586	0	0	0	0	0.0	0.0	0.0	0	0	1.000
■ DMC 502	1172	0	0	0	0	0.0	0.0	0.0	0	0	1.000
■ DMC 503	1055	0	0	0	0	0.0	0.0	0.0	0	0	1.000
■ DMC 517	645	0	0	0	0	0.0	0.0	0.0	0	0	1.000
■ DMC 518	358	0	0	0	0	0.0	0.0	0.0	0	0	1.000
■ DMC 520	1871	0	0	0	0	0.0	0.0	0.0	0	0	1.000
■ DMC 550	9	0	0	0	0	0.0	0.0	0.0	0	0	1.000
■ DMC 561	1849	0	0	0	0	0.0	0.0	0.0	0	0	1.000
■ DMC 562	345	0	0	0	0	0.0	0.0	0.0	0	0	1.000
■ DMC 580	477	0	0	0	0	0.0	0.0	0.0	0	0	1.000
■ DMC 597	474	0	0	0	0	0.0	0.0	0.0	0	0	1.000
■ DMC 598	221	0	0	0	0	0.0	0.0	0.0	0	0	1.000
■ DMC 677	1082	0	0	0	0	0.0	0.0	0.0	0	0	1.000
■ DMC 702	720	0	0	0	0	0.0	0.0	0.0	0	0	1.000
■ DMC 703	1351	0	0	0	0	0.0	0.0	0.0	0	0	1.000
■ DMC 704	5448	0	0	0	0	0.0	0.0	0.0	0	0	2.000
■ DMC 726	1552	0	0	0	0	0.0	0.0	0.0	0	0	1.000

Type	Number	Full	Half	Quarter	Petite	Back(in)	Str(in)	Spec(in)	French	Bead	Skein Est.
DMC	729	1013	0	0	0	0.0	0.0	0.0	0	0	1.000
DMC	743	601	0	0	0	0.0	0.0	0.0	0	0	1.000
DMC	744	1482	0	0	0	0.0	0.0	0.0	0	0	1.000
DMC	745	1408	0	0	0	0.0	0.0	0.0	0	0	1.000
DMC	758	363	0	0	0	0.0	0.0	0.0	0	0	1.000
DMC	779	173	0	0	0	0.0	0.0	0.0	0	0	1.000
DMC	796	487	0	0	0	0.0	0.0	0.0	0	0	1.000
DMC	798	134	0	0	0	0.0	0.0	0.0	0	0	1.000
DMC	803	787	0	0	0	0.0	0.0	0.0	0	0	1.000
DMC	807	446	0	0	0	0.0	0.0	0.0	0	0	1.000
DMC	820	862	0	0	0	0.0	0.0	0.0	0	0	1.000
DMC	823	4149	0	0	0	0.0	0.0	0.0	0	0	2.000
DMC	824	1705	0	0	0	0.0	0.0	0.0	0	0	1.000
DMC	825	496	0	0	0	0.0	0.0	0.0	0	0	1.000
DMC	833	614	0	0	0	0.0	0.0	0.0	0	0	1.000
DMC	890	7572	0	0	0	0.0	0.0	0.0	0	0	3.000
DMC	895	4656	0	0	0	0.0	0.0	0.0	0	0	2.000
DMC	902	437	0	0	0	0.0	0.0	0.0	0	0	1.000
DMC	904	3594	0	0	0	0.0	0.0	0.0	0	0	1.000
DMC	905	2075	0	0	0	0.0	0.0	0.0	0	0	1.000
DMC	921	247	0	0	0	0.0	0.0	0.0	0	0	1.000
DMC	930	1454	0	0	0	0.0	0.0	0.0	0	0	1.000
DMC	938	469	0	0	0	0.0	0.0	0.0	0	0	1.000
DMC	939	6909	0	0	0	0.0	0.0	0.0	0	0	2.000
DMC	986	1207	0	0	0	0.0	0.0	0.0	0	0	1.000
DMC	987	2722	0	0	0	0.0	0.0	0.0	0	0	1.000
DMC	988	3018	0	0	0	0.0	0.0	0.0	0	0	1.000
DMC	989	1905	0	0	0	0.0	0.0	0.0	0	0	1.000
DMC	992	83	0	0	0	0.0	0.0	0.0	0	0	1.000
DMC	993	150	0	0	0	0.0	0.0	0.0	0	0	1.000
DMC	995	61	0	0	0	0.0	0.0	0.0	0	0	1.000
DMC	996	76	0	0	0	0.0	0.0	0.0	0	0	1.000
DMC	3012	371	0	0	0	0.0	0.0	0.0	0	0	1.000
DMC	3031	187	0	0	0	0.0	0.0	0.0	0	0	1.000
DMC	3052	570	0	0	0	0.0	0.0	0.0	0	0	1.000
DMC	3346	3578	0	0	0	0.0	0.0	0.0	0	0	1.000
DMC	3348	1826	0	0	0	0.0	0.0	0.0	0	0	1.000
DMC	3363	1103	0	0	0	0.0	0.0	0.0	0	0	1.000
DMC	3750	5462	0	0	0	0.0	0.0	0.0	0	0	2.000
DMC	3760	402	0	0	0	0.0	0.0	0.0	0	0	1.000
DMC	3766	364	0	0	0	0.0	0.0	0.0	0	0	1.000
DMC	3776	486	0	0	0	0.0	0.0	0.0	0	0	1.000

Type	Number	Full	Half	Quarter	Petite	Back(in)	Str(in)	Spec(in)	French	Bead	Skein Est.
■ DMC	3787	230	0	0	0	0.0	0.0	0.0	0	0	1.000
■ DMC	3799	286	0	0	0	0.0	0.0	0.0	0	0	1.000
■ DMC	3808	3212	0	0	0	0.0	0.0	0.0	0	0	1.000
■ DMC	3810	1220	0	0	0	0.0	0.0	0.0	0	0	1.000
■ DMC	3815	2124	0	0	0	0.0	0.0	0.0	0	0	1.000
■ DMC	3816	877	0	0	0	0.0	0.0	0.0	0	0	1.000
■ DMC	3818	304	0	0	0	0.0	0.0	0.0	0	0	1.000
■ DMC	3819	4722	0	0	0	0.0	0.0	0.0	0	0	2.000
■ DMC	3822	461	0	0	0	0.0	0.0	0.0	0	0	1.000
■ DMC	3835	11	0	0	0	0.0	0.0	0.0	0	0	1.000
■ DMC	3857	572	0	0	0	0.0	0.0	0.0	0	0	1.000
■ DMC	3859	338	0	0	0	0.0	0.0	0.0	0	0	1.000





	80	90	100	110	120	130	140	150
10	+	+	+	+	+	+	+	+
20	+	+	+	+	+	+	+	+
30	+	+	+	+	+	+	+	+
40	+	+	+	+	+	+	+	+
50	+	+	+	+	+	+	+	+
60	+	+	+	+	+	+	+	+
70	+	+	+	+	+	+	+	+
80	+	+	+	+	+	+	+	+
90	+	+	+	+	+	+	+	+

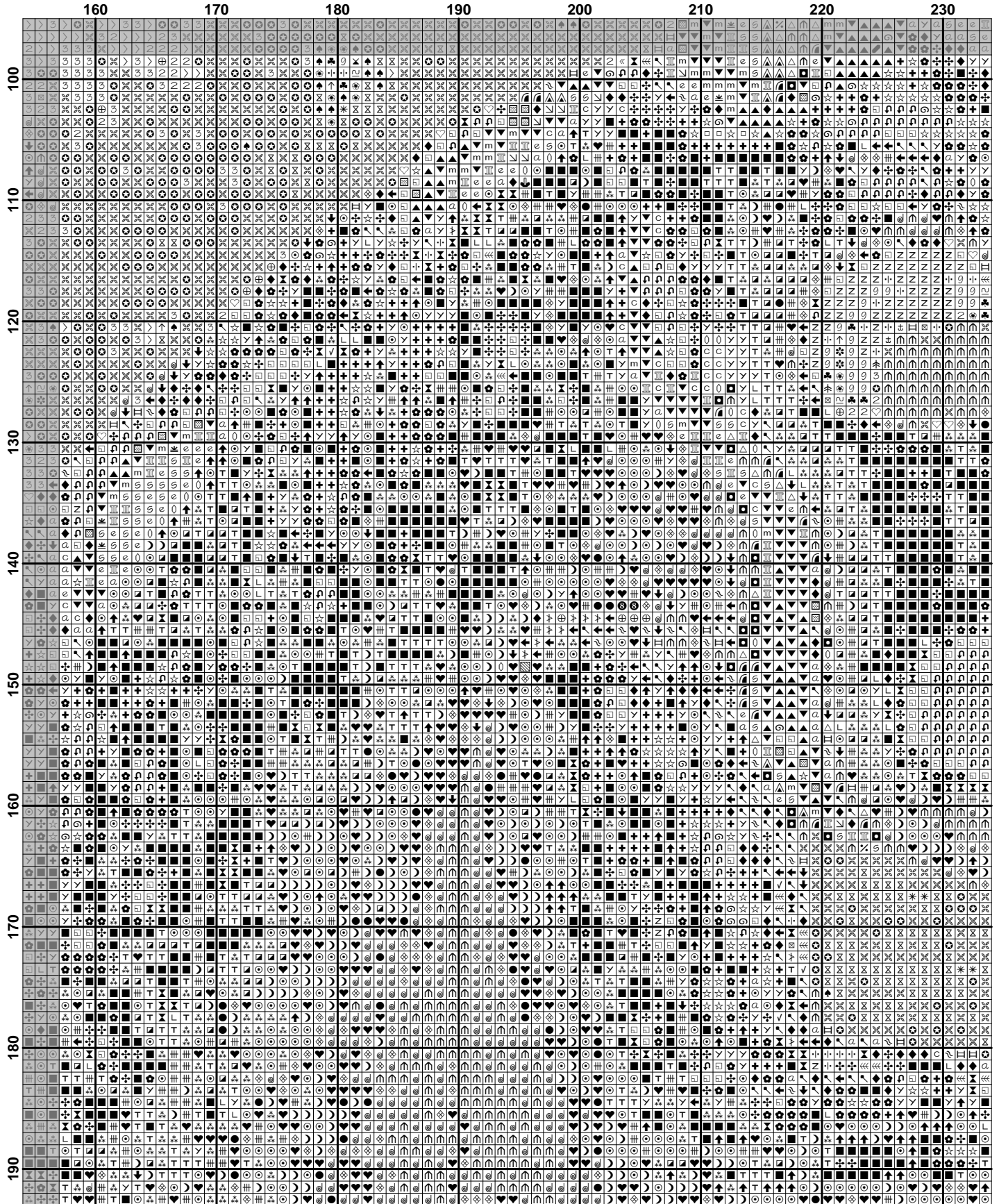
	160	170	180	190	200	210	220	230
10	4	4	4	4	4	4	4	4
20	5	5	5	5	5	5	5	5
30	6	6	6	6	6	6	6	6
40	7	7	7	7	7	7	7	7
50	8	8	8	8	8	8	8	8
60	9	9	9	9	9	9	9	9
70	10	10	10	10	10	10	10	10
80	11	11	11	11	11	11	11	11
90	12	12	12	12	12	12	12	12

	240	250	260	270	280	290	300	310
10	...	...	...	...	...	...	...	...
20	...	...	...	...	...	...	...	...
30	...	...	...	...	...	...	...	...
40	...	...	...	...	...	...	...	...
50	...	...	...	...	...	...	...	...
60	...	...	...	...	...	...	...	...
70	...	...	...	...	...	...	...	...
80	...	...	...	...	...	...	...	...
90	...	...	...	...	...	...	...	...

	310	320	330	340	350
10	9	9	9	9	9
20	9	9	9	9	9
30	9	9	9	9	9
40	9	9	9	9	9
50	9	9	9	9	9
60	9	9	9	9	9
70	9	9	9	9	9
80	9	9	9	9	9
90	9	9	9	9	9

	10	20	30	40	50	60	70	80
100	...	...	...	...	...	...	...	...
110	...	...	...	...	...	...	...	...
120	...	...	...	...	...	...	...	...
130	...	...	...	...	...	...	...	...
140	...	...	...	...	...	...	...	...
150	...	...	...	...	...	...	...	...
160	...	...	...	...	...	...	...	...
170	...	...	...	...	...	...	...	...
180	...	...	...	...	...	...	...	...
190	...	...	...	...	...	...	...	...

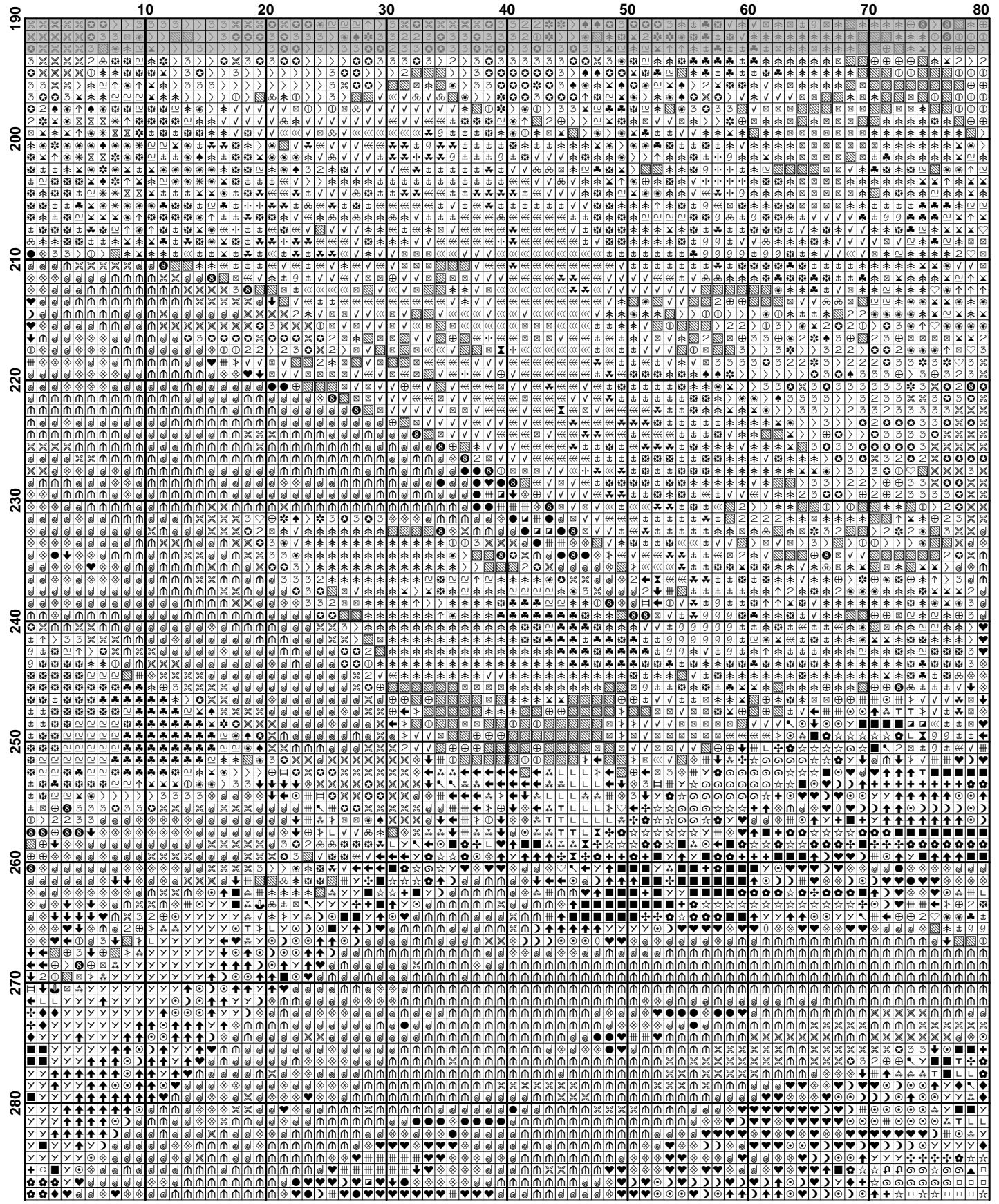
	80	90	100	110	120	130	140	150
100	...	...	...	...	...	...	...	...
110	...	...	...	...	...	...	...	...
120	...	...	...	...	...	...	...	...
130	...	...	...	...	...	...	...	...
140	...	...	...	...	...	...	...	...
150	...	...	...	...	...	...	...	...
160	...	...	...	...	...	...	...	...
170	...	...	...	...	...	...	...	...
180	...	...	...	...	...	...	...	...
190	...	...	...	...	...	...	...	...



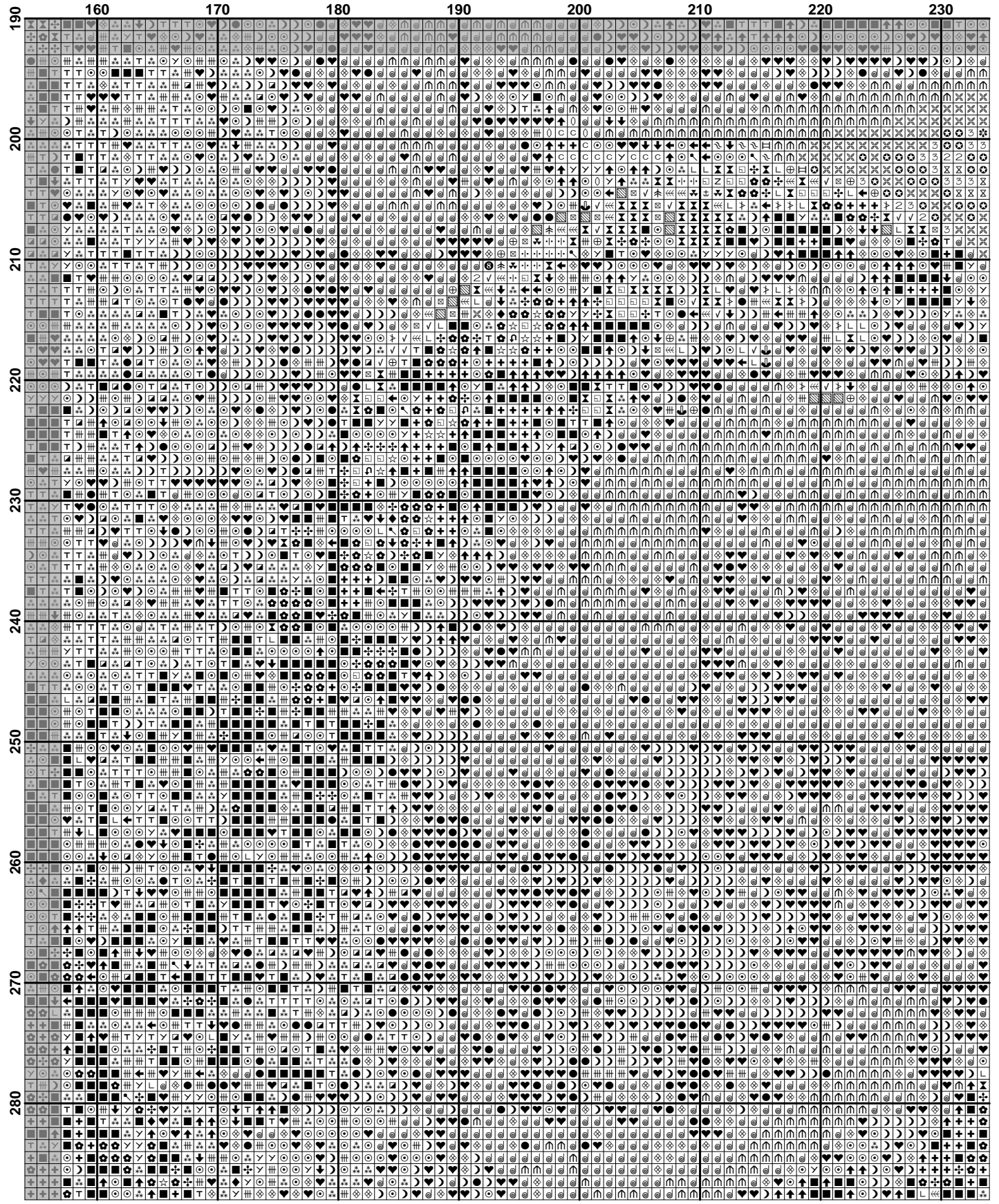


	240	250	260	270	280	290	300	310
100	...	...	...	...	...	...	...	...
110	...	...	...	...	...	...	...	...
120	...	...	...	...	...	...	...	...
130	...	...	...	...	...	...	...	...
140	...	...	...	...	...	...	...	...
150	...	...	...	...	...	...	...	...
160	...	...	...	...	...	...	...	...
170	...	...	...	...	...	...	...	...
180	...	...	...	...	...	...	...	...
190	...	...	...	...	...	...	...	...

	310	320	330	340	350
100	...	...	...	...	...
110	...	...	...	...	...
120	...	...	...	...	...
130	...	...	...	...	...
140	...	...	...	...	...
150	...	...	...	...	...
160	...	...	...	...	...
170	...	...	...	...	...
180	...	...	...	...	...
190	...	...	...	...	...



190	80	90	100	110	120	130	140	150
191	192	193	194	195	196	197	198	199
200	201	202	203	204	205	206	207	208
209	210	211	212	213	214	215	216	217
218	219	220	221	222	223	224	225	226
227	228	229	230	231	232	233	234	235
236	237	238	239	240	241	242	243	244
245	246	247	248	249	250	251	252	253
254	255	256	257	258	259	260	261	262
263	264	265	266	267	268	269	270	271
272	273	274	275	276	277	278	279	280
281	282	283	284	285	286	287	288	289
290	291	292	293	294	295	296	297	298
299	300	301	302	303	304	305	306	307
308	309	310	311	312	313	314	315	316
317	318	319	320	321	322	323	324	325
326	327	328	329	330	331	332	333	334
335	336	337	338	339	340	341	342	343
344	345	346	347	348	349	350	351	352
353	354	355	356	357	358	359	360	361
362	363	364	365	366	367	368	369	370
371	372	373	374	375	376	377	378	379
380	381	382	383	384	385	386	387	388
389	390	391	392	393	394	395	396	397
398	399	400	401	402	403	404	405	406
407	408	409	410	411	412	413	414	415
416	417	418	419	420	421	422	423	424
425	426	427	428	429	430	431	432	433
434	435	436	437	438	439	440	441	442
443	444	445	446	447	448	449	450	451
452	453	454	455	456	457	458	459	460
461	462	463	464	465	466	467	468	469
470	471	472	473	474	475	476	477	478
479	480	481	482	483	484	485	486	487
488	489	490	491	492	493	494	495	496
497	498	499	500	501	502	503	504	505
506	507	508	509	510	511	512	513	514
515	516	517	518	519	520	521	522	523
524	525	526	527	528	529	530	531	532
533	534	535	536	537	538	539	540	541
542	543	544	545	546	547	548	549	550
551	552	553	554	555	556	557	558	559
560	561	562	563	564	565	566	567	568
569	570	571	572	573	574	575	576	577
578	579	580	581	582	583	584	585	586
587	588	589	590	591	592	593	594	595
596	597	598	599	600	601	602	603	604
605	606	607	608	609	610	611	612	613
614	615	616	617	618	619	620	621	622
623	624	625	626	627	628	629	630	631
632	633	634	635	636	637	638	639	640
641	642	643	644	645	646	647	648	649
650	651	652	653	654	655	656	657	658
659	660	661	662	663	664	665	666	667
668	669	670	671	672	673	674	675	676
677	678	679	680	681	682	683	684	685
686	687	688	689	690	691	692	693	694
695	696	697	698	699	700	701	702	703
704	705	706	707	708	709	710	711	712
713	714	715	716	717	718	719	720	721
722	723	724	725	726	727	728	729	730
731	732	733	734	735	736	737	738	739
740	741	742	743	744	745	746	747	748
749	750	751	752	753	754	755	756	757
758	759	760	761	762	763	764	765	766
767	768	769	770	771	772	773	774	775
776	777	778	779	780	781	782	783	784
785	786	787	788	789	790	791	792	793
794	795	796	797	798	799	800	801	802
803	804	805	806	807	808	809	810	811
812	813	814	815	816	817	818	819	820
821	822	823	824	825	826	827	828	829
830	831	832	833	834	835	836	837	838
839	840	841	842	843	844	845	846	847
848	849	850	851	852	853	854	855	856
857	858	859	860	861	862	863	864	865
866	867	868	869	870	871	872	873	874
875	876	877	878	879	880	881	882	883
884	885	886	887	888	889	890	891	892
893	894	895	896	897	898	899	900	901
902	903	904	905	906	907	908	909	910
911	912	913	914	915	916	917	918	919
920	921	922	923	924	925	926	927	928
929	930	931	932	933	934	935	936	937
938	939	940	941	942	943	944	945	946
947	948	949	950	951	952	953	954	955
956	957	958	959	960	961	962	963	964
965	966	967	968	969	970	971	972	973
974	975	976	977	978	979	980	981	982
983	984	985	986	987	988	989	990	991
992	993	994	995	996	997	998	999	1000



190	240	250	260	270	280	290	300	310
200								
210								
220								
230								
240								
250								
260								
270								
280								

