

Heaven and Earth Designs

High Tea

Chart No: HAERAS 146

Chart Design By Michele Sayetta

Artwork by Randal Spangler



Finished Design Size 350 W by 395 H (14 WX 15-3/4 inches on 25ct)
(This Chart Contains 90 Colors)

Heaven and Earth Designs LLC

1373 45th Ave SW

Willmar MN 56201

320-214-7998

www.heavenandearthdesigns.com

Copyright Heaven and Earth Designs LLC 2011

Designs © [2011] Randal Spangler, <http://www.randalspangler.com/>

Instructions

Congratulations on buying a **Heaven and Earth Designs LLC** Cross Stitch Chart .

We know it will bring you many hours of pleasurable stitching and believe the final result will be something to love and admire forever.

Included with your chart is a clear plastic bag to protect your chart, and a coded thread list for the threads you will need to complete your project. Our charts are designed to use DMC stranded cotton threads and, where appropriate, Kreinik metallic thread.

Chart Instructions:

1. This chart is made up of several numbered pages beginning at the top left corner of the first page. The pages of chart are laid out from left to right in rows e.g. 1 2 3 4, 5 6 7 8. Although each chart is marked with arrows which indicate the centre , we believe you will find it easier to begin from the top left corner of page 1 and follow the chart page by page to the bottom right corner of the last page.
2. We recommend you stitch your design on either 18 count Aida or 25 count Linen. using 2 strands of cotton over one in each case.
3. At the top of the thread list you will find our recommendation for the fabric colour. We recommend purchasing a piece of fabric that equates to the design size plus 3 inches [75mm] all around, to allow for framing and matting.
4. Because of the large number of stitches, we have found it to be easier if you stitch one 10X10 grid at a time and then continue on to the next 10 x 10 grid.
5. Stitch each page until it is completed and then move on to the next. On each page there is a number at the top left that indicates the page number. On each corner is a number in parenthesis that indicates the connecting page, unless there is not one.
6. Under International Copyright Laws, you may copy the chart for your own use. We recommend that you use a copy as your working document. You may also wish to enlarge the pages to make the symbols easier to read.

If you have any questions regarding this chart please feel free to contact us.

Heaven and Earth Designs LLC

320-214-7998

<http://www.heavenandearthdesigns.com>

Heaven and Earth Designs LLC

















Designs © [2011] Randal Spangler, <http://www.randalspangler.com/>

Pattern Name: High Tea-Spangler
Designed By: Michele Sayetta
Company: Heaven and Earth Designs LLC
Copyright: 2011 ®
Fabric: Linen 25, White
 350w X 395h Stitches
Size: 25 Count, 14w X 15-3/4h in

Floss Used for Full Stitches:

Symbol	Strands	Type	Number	Color
■	4	2	DMC 154	Grape-VYDK
■	6	2	DMC 158	Cornflower Blue-MD VYDK
■	‡	2	DMC 159	Gray Blue-LT
■	§	2	DMC 160	Gray Blue-MD
■	△	2	DMC 161	Gray Blue
■	@	2	DMC 166	Moss Green-MD LT
■	†	2	DMC 168	Pewter-VYLT
■	v	2	DMC 169	Pewter-LT
■	H	2	DMC 208	Lavender-VYDK
■	↓	2	DMC 301	Mahogany-MD
■	/	2	DMC 310	Black
■	x	2	DMC 317	Pewter Gray
■	3	2	DMC 327	Violet-VYDK
■	5	2	DMC 333	Blue Violet-VYDK
■	III	2	DMC 334	Baby Blue-MD
■	L	2	DMC 371	Mustard
■	←	2	DMC 400	Mahogany-DK
■	↑	2	DMC 402	Mahogany-VYLT
■	●	2	DMC 420	Hazelnut Brown-DK
■	#	2	DMC 422	Hazelnut Brown-LT
■	▲	2	DMC 434	Brown-LT
■	▼	2	DMC 437	Tan-LT
■	⊕	2	DMC 469	Avocado Green
■	v	2	DMC 500	Blue Green-VYDK
■	⊗	2	DMC 520	Fern Green-DK
■	H	2	DMC 524	Fern Green-VYLT
■	0	2	DMC 554	Violet-LT
■	↑	2	DMC 600	Cranberry-VYDK
■	∞	2	DMC 603	Cranberry
■	m	2	DMC 644	Beige Gray-MD
■	⌒	2	DMC 647	Beaver Gray-MD
■	□	2	DMC 712	Cream

Symbol	Strands	Type	Number	Color
	2	DMC	718	Plum
	2	DMC	720	Orange Spice-DK
	2	DMC	729	Old Gold-MD
	2	DMC	734	Olive Green-LT
	2	DMC	738	Tan-VYLT
	2	DMC	762	Pearl Gray-VYLT
	2	DMC	772	Yellow Green-VYLT
	2	DMC	779	Cocoa-DK
	2	DMC	780	Topaz-ULVYDK
	2	DMC	796	Royal Blue-DK
	2	DMC	797	Royal Blue
	2	DMC	814	Garnet-DK
	2	DMC	815	Garnet-MD
	2	DMC	820	Royal Blue-VYDK
	2	DMC	822	Beige Gray-LT
	2	DMC	824	Blue-VYDK
	2	DMC	825	Blue-DK
	2	DMC	898	Coffee Brown-VYDK
	2	DMC	915	Plum-DK
	2	DMC	917	Plum-MD
	2	DMC	918	Red Copper-DK
	2	DMC	919	Red Copper
	2	DMC	920	Copper-MD
	2	DMC	922	Copper-LT
	2	DMC	927	Gray Green-LT
	2	DMC	930	Antique Blue-DK
	2	DMC	931	Antique Blue-MD
	2	DMC	932	Antique Blue-LT
	2	DMC	939	Navy Blue-VYDK
	2	DMC	951	Tawny-LT
	2	DMC	977	Golden Brown-LT
	2	DMC	3024	Brown Gray-VYLT
	2	DMC	3047	Yellow Beige-LT
	2	DMC	3346	Hunter Green
	2	DMC	3350	Dusty Rose-ULDK
	2	DMC	3371	Black Brown
	2	DMC	3722	Shell Pink-MD
	2	DMC	3726	Antique Mauve-DK
	2	DMC	3731	Dusty Rose-VYDK
	2	DMC	3750	Antique Blue-VYDK
	2	DMC	3776	Mahogany-LT
	2	DMC	3787	Brown Gray-DK

Symbol	Strands	Type	Number	Color
	2	DMC	3799	Pewter Gray-VYDK
	2	DMC	3804	Cyclamen Pink-DK
	2	DMC	3805	Cyclamen Pink
	2	DMC	3807	Cornflower Blue
	2	DMC	3829	Old Gold-VYDK
	2	DMC	3835	Grape-MD
	2	DMC	3836	Grape-LT
	2	DMC	3837	Lavender-ULDK
	2	DMC	3853	Autumn Gold-DK
	2	DMC	3856	Mahogany-ULVYLT
	2	DMC	3858	Rosewood-MD
	2	DMC	3859	Rosewood-LT
	2	DMC	3861	Cocoa-LT
	2	DMC	3862	Mocha Beige-DK
	2	DMC	3864	Mocha Beige-LT
	2	DMC	3866	Mocha Brown-ULVYLT

Usage Summary

Strands Per Skein: 6

Skein Length: 313.0 in

Type	Number	Full	Half	Quarter	Petite	Back(in)	Str(in)	Spec(in)	French	Bead	Skein Est.
■ DMC 154	154	3982	0	0	0	0.0	0.0	0.0	0	0	2.000
■ DMC 158	158	767	0	0	0	0.0	0.0	0.0	0	0	1.000
■ DMC 159	159	234	0	0	0	0.0	0.0	0.0	0	0	1.000
■ DMC 160	160	1528	0	0	0	0.0	0.0	0.0	0	0	1.000
■ DMC 161	161	1817	0	0	0	0.0	0.0	0.0	0	0	1.000
■ DMC 166	166	94	0	0	0	0.0	0.0	0.0	0	0	1.000
■ DMC 168	168	2254	0	0	0	0.0	0.0	0.0	0	0	1.000
■ DMC 169	169	1500	0	0	0	0.0	0.0	0.0	0	0	1.000
■ DMC 208	208	433	0	0	0	0.0	0.0	0.0	0	0	1.000
■ DMC 301	301	3542	0	0	0	0.0	0.0	0.0	0	0	1.000
■ DMC 310	310	4098	0	0	0	0.0	0.0	0.0	0	0	2.000
■ DMC 317	317	1559	0	0	0	0.0	0.0	0.0	0	0	1.000
■ DMC 327	327	1373	0	0	0	0.0	0.0	0.0	0	0	1.000
■ DMC 333	333	61	0	0	0	0.0	0.0	0.0	0	0	1.000
■ DMC 334	334	102	0	0	0	0.0	0.0	0.0	0	0	1.000
■ DMC 371	371	1895	0	0	0	0.0	0.0	0.0	0	0	1.000
■ DMC 400	400	2369	0	0	0	0.0	0.0	0.0	0	0	1.000
■ DMC 402	402	408	0	0	0	0.0	0.0	0.0	0	0	1.000
■ DMC 420	420	1399	0	0	0	0.0	0.0	0.0	0	0	1.000
■ DMC 422	422	1362	0	0	0	0.0	0.0	0.0	0	0	1.000
■ DMC 434	434	1401	0	0	0	0.0	0.0	0.0	0	0	1.000
■ DMC 437	437	1749	0	0	0	0.0	0.0	0.0	0	0	1.000
■ DMC 469	469	597	0	0	0	0.0	0.0	0.0	0	0	1.000
■ DMC 500	500	2682	0	0	0	0.0	0.0	0.0	0	0	1.000
■ DMC 520	520	2510	0	0	0	0.0	0.0	0.0	0	0	1.000
■ DMC 524	524	431	0	0	0	0.0	0.0	0.0	0	0	1.000
■ DMC 554	554	81	0	0	0	0.0	0.0	0.0	0	0	1.000
■ DMC 600	600	1081	0	0	0	0.0	0.0	0.0	0	0	1.000
■ DMC 603	603	107	0	0	0	0.0	0.0	0.0	0	0	1.000
■ DMC 644	644	600	0	0	0	0.0	0.0	0.0	0	0	1.000
■ DMC 647	647	590	0	0	0	0.0	0.0	0.0	0	0	1.000
■ DMC 712	712	2699	0	0	0	0.0	0.0	0.0	0	0	1.000
■ DMC 718	718	2159	0	0	0	0.0	0.0	0.0	0	0	1.000
■ DMC 720	720	1042	0	0	0	0.0	0.0	0.0	0	0	1.000
■ DMC 729	729	2185	0	0	0	0.0	0.0	0.0	0	0	1.000
■ DMC 734	734	699	0	0	0	0.0	0.0	0.0	0	0	1.000

Type	Number	Full	Half	Quarter	Petite	Back(in)	Str(in)	Spec(in)	French	Bead	Skein Est.
DMC	738	2364	0	0	0	0.0	0.0	0.0	0	0	1.000
DMC	762	944	0	0	0	0.0	0.0	0.0	0	0	1.000
DMC	772	61	0	0	0	0.0	0.0	0.0	0	0	1.000
DMC	779	1305	0	0	0	0.0	0.0	0.0	0	0	1.000
DMC	780	2218	0	0	0	0.0	0.0	0.0	0	0	1.000
DMC	796	4836	0	0	0	0.0	0.0	0.0	0	0	2.000
DMC	797	3297	0	0	0	0.0	0.0	0.0	0	0	1.000
DMC	814	4550	0	0	0	0.0	0.0	0.0	0	0	2.000
DMC	815	3595	0	0	0	0.0	0.0	0.0	0	0	1.000
DMC	820	982	0	0	0	0.0	0.0	0.0	0	0	1.000
DMC	822	897	0	0	0	0.0	0.0	0.0	0	0	1.000
DMC	824	4509	0	0	0	0.0	0.0	0.0	0	0	2.000
DMC	825	4787	0	0	0	0.0	0.0	0.0	0	0	2.000
DMC	898	990	0	0	0	0.0	0.0	0.0	0	0	1.000
DMC	915	5040	0	0	0	0.0	0.0	0.0	0	0	2.000
DMC	917	1792	0	0	0	0.0	0.0	0.0	0	0	1.000
DMC	918	4062	0	0	0	0.0	0.0	0.0	0	0	2.000
DMC	919	1222	0	0	0	0.0	0.0	0.0	0	0	1.000
DMC	920	474	0	0	0	0.0	0.0	0.0	0	0	1.000
DMC	922	159	0	0	0	0.0	0.0	0.0	0	0	1.000
DMC	927	1224	0	0	0	0.0	0.0	0.0	0	0	1.000
DMC	930	1009	0	0	0	0.0	0.0	0.0	0	0	1.000
DMC	931	3637	0	0	0	0.0	0.0	0.0	0	0	1.000
DMC	932	1595	0	0	0	0.0	0.0	0.0	0	0	1.000
DMC	939	1595	0	0	0	0.0	0.0	0.0	0	0	1.000
DMC	951	360	0	0	0	0.0	0.0	0.0	0	0	1.000
DMC	977	1286	0	0	0	0.0	0.0	0.0	0	0	1.000
DMC	3024	2724	0	0	0	0.0	0.0	0.0	0	0	1.000
DMC	3047	2331	0	0	0	0.0	0.0	0.0	0	0	1.000
DMC	3346	1204	0	0	0	0.0	0.0	0.0	0	0	1.000
DMC	3350	542	0	0	0	0.0	0.0	0.0	0	0	1.000
DMC	3371	1324	0	0	0	0.0	0.0	0.0	0	0	1.000
DMC	3722	729	0	0	0	0.0	0.0	0.0	0	0	1.000
DMC	3726	512	0	0	0	0.0	0.0	0.0	0	0	1.000
DMC	3731	728	0	0	0	0.0	0.0	0.0	0	0	1.000
DMC	3750	595	0	0	0	0.0	0.0	0.0	0	0	1.000
DMC	3776	1499	0	0	0	0.0	0.0	0.0	0	0	1.000
DMC	3787	537	0	0	0	0.0	0.0	0.0	0	0	1.000
DMC	3799	1548	0	0	0	0.0	0.0	0.0	0	0	1.000
DMC	3804	650	0	0	0	0.0	0.0	0.0	0	0	1.000
DMC	3805	1017	0	0	0	0.0	0.0	0.0	0	0	1.000
DMC	3807	85	0	0	0	0.0	0.0	0.0	0	0	1.000

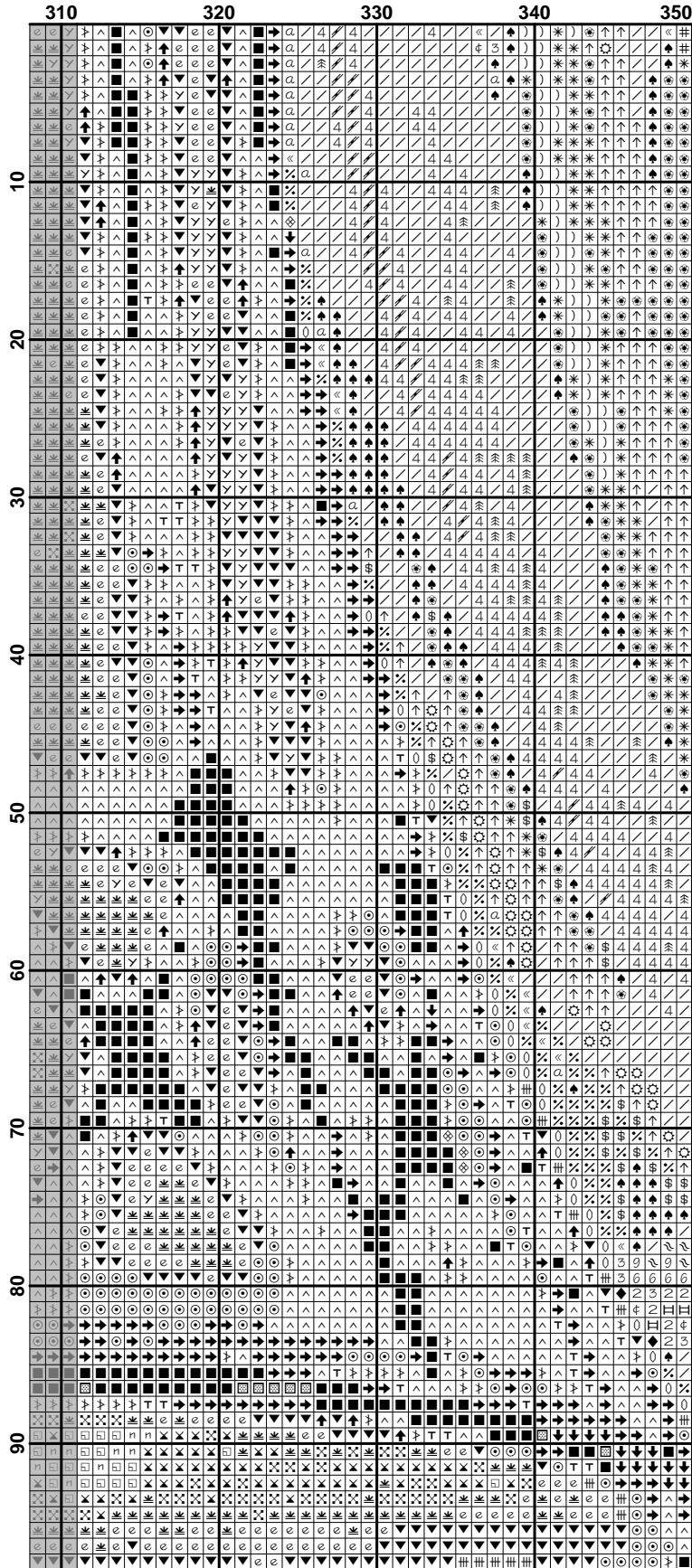
Type	Number	Full	Half	Quarter	Petite	Back(in)	Str(in)	Spec(in)	French	Bead	Skein Est.
■ DMC	3829	3242	0	0	0	0.0	0.0	0.0	0	0	1.000
■ DMC	3835	793	0	0	0	0.0	0.0	0.0	0	0	1.000
■ DMC	3836	465	0	0	0	0.0	0.0	0.0	0	0	1.000
■ DMC	3837	627	0	0	0	0.0	0.0	0.0	0	0	1.000
■ DMC	3853	2268	0	0	0	0.0	0.0	0.0	0	0	1.000
■ DMC	3856	561	0	0	0	0.0	0.0	0.0	0	0	1.000
■ DMC	3858	803	0	0	0	0.0	0.0	0.0	0	0	1.000
■ DMC	3859	492	0	0	0	0.0	0.0	0.0	0	0	1.000
■ DMC	3861	340	0	0	0	0.0	0.0	0.0	0	0	1.000
■ DMC	3862	661	0	0	0	0.0	0.0	0.0	0	0	1.000
■ DMC	3864	475	0	0	0	0.0	0.0	0.0	0	0	1.000
■ DMC	3866	1318	0	0	0	0.0	0.0	0.0	0	0	1.000

	10	20	30	40	50	60	70	80
10	0000000000	0000000000	0000000000	0000000000	0000000000	0000000000	0000000000	0000000000
20	0000000000	0000000000	0000000000	0000000000	0000000000	0000000000	0000000000	0000000000
30	0000000000	0000000000	0000000000	0000000000	0000000000	0000000000	0000000000	0000000000
40	0000000000	0000000000	0000000000	0000000000	0000000000	0000000000	0000000000	0000000000
50	0000000000	0000000000	0000000000	0000000000	0000000000	0000000000	0000000000	0000000000
60	0000000000	0000000000	0000000000	0000000000	0000000000	0000000000	0000000000	0000000000
70	0000000000	0000000000	0000000000	0000000000	0000000000	0000000000	0000000000	0000000000
80	0000000000	0000000000	0000000000	0000000000	0000000000	0000000000	0000000000	0000000000
90	0000000000	0000000000	0000000000	0000000000	0000000000	0000000000	0000000000	0000000000

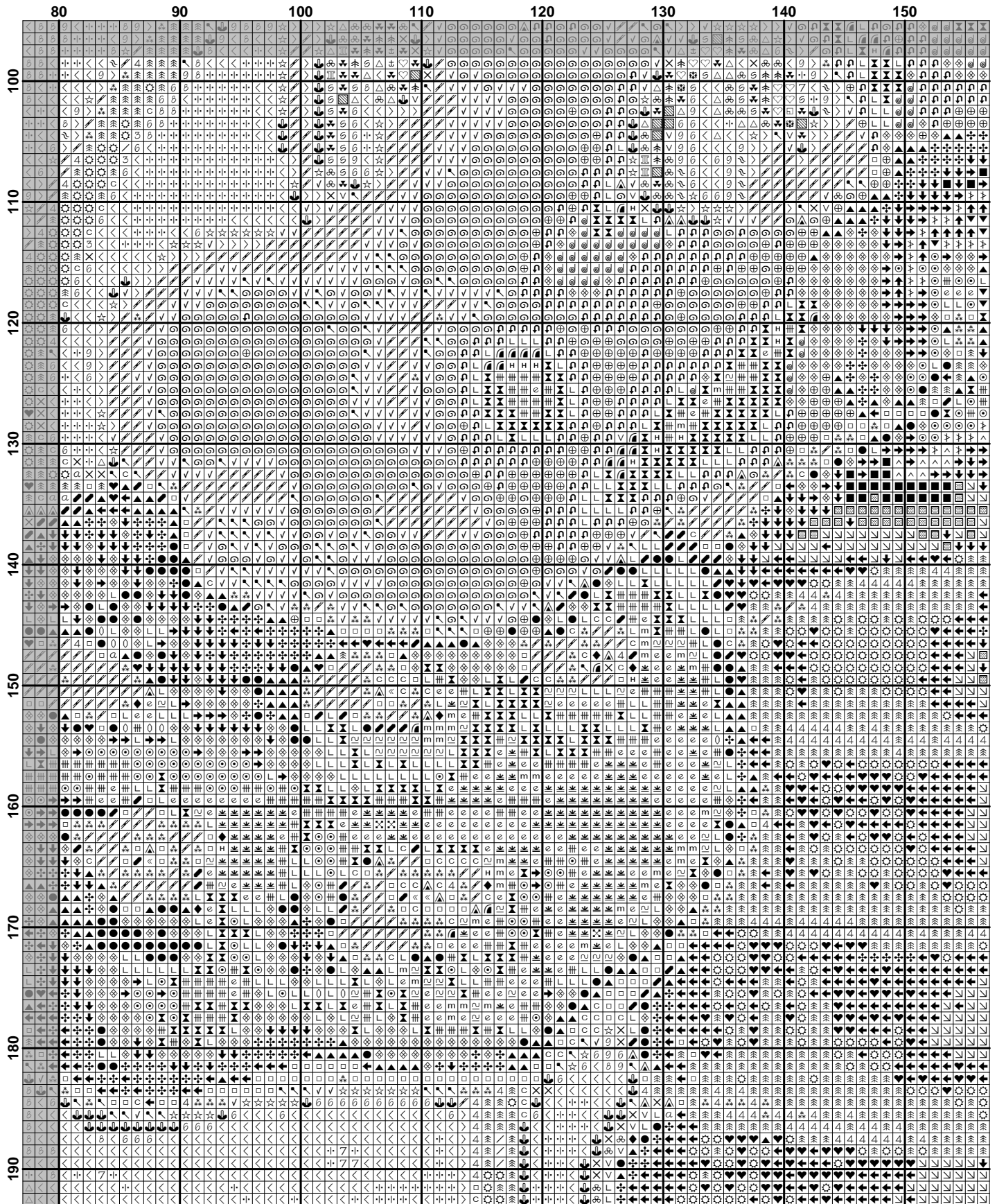
	80	90	100	110	120	130	140	150
10
20
30
40
50
60
70
80
90

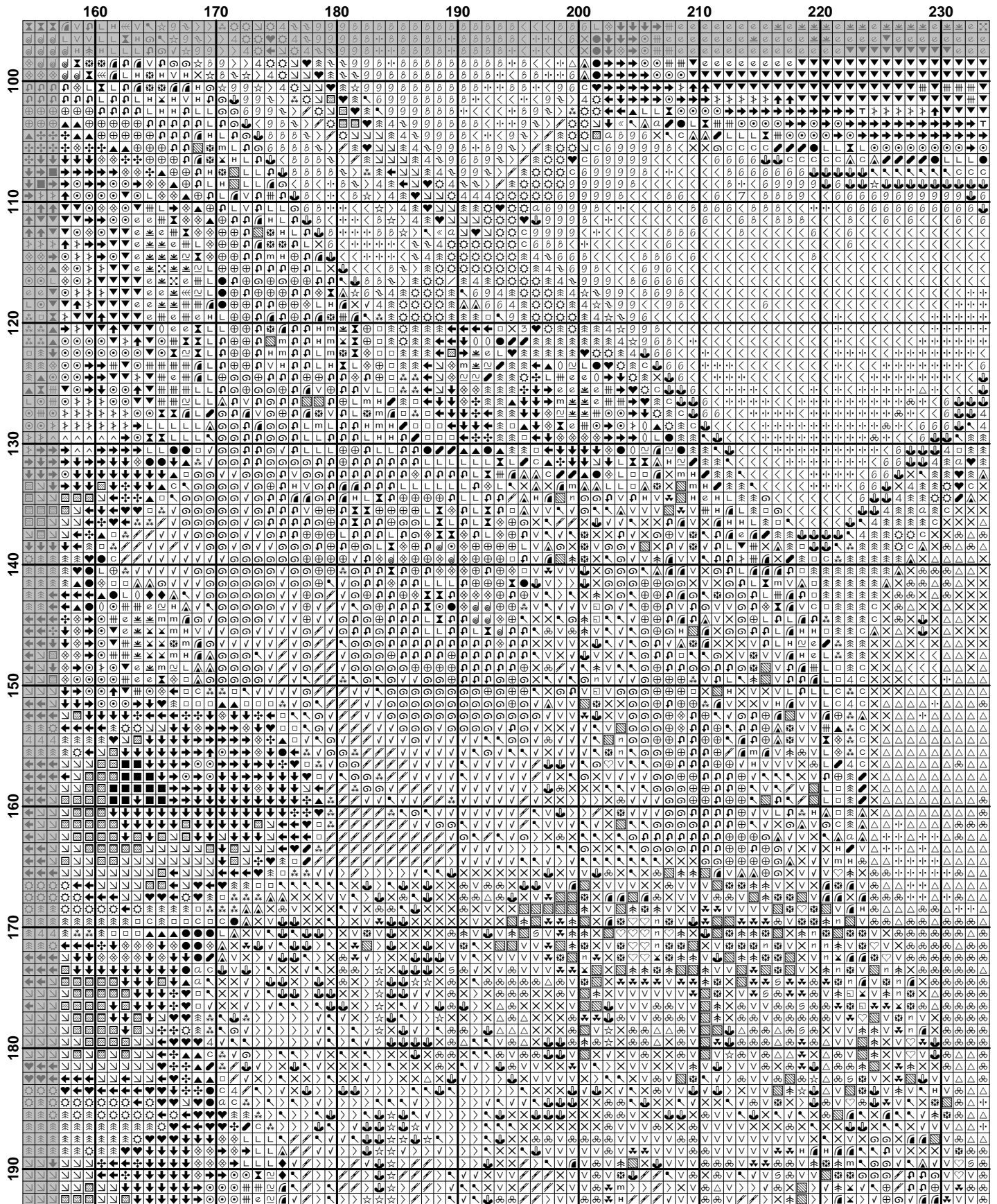
	160	170	180	190	200	210	220	230
10	9	9	9	9	9	9	9	9
20	9	9	9	9	9	9	9	9
30	9	9	9	9	9	9	9	9
40	9	9	9	9	9	9	9	9
50	9	9	9	9	9	9	9	9
60	9	9	9	9	9	9	9	9
70	9	9	9	9	9	9	9	9
80	9	9	9	9	9	9	9	9
90	9	9	9	9	9	9	9	9

	240	250	260	270	280	290	300	310
10								
20								
30								
40								
50								
60								
70								
80								
90								



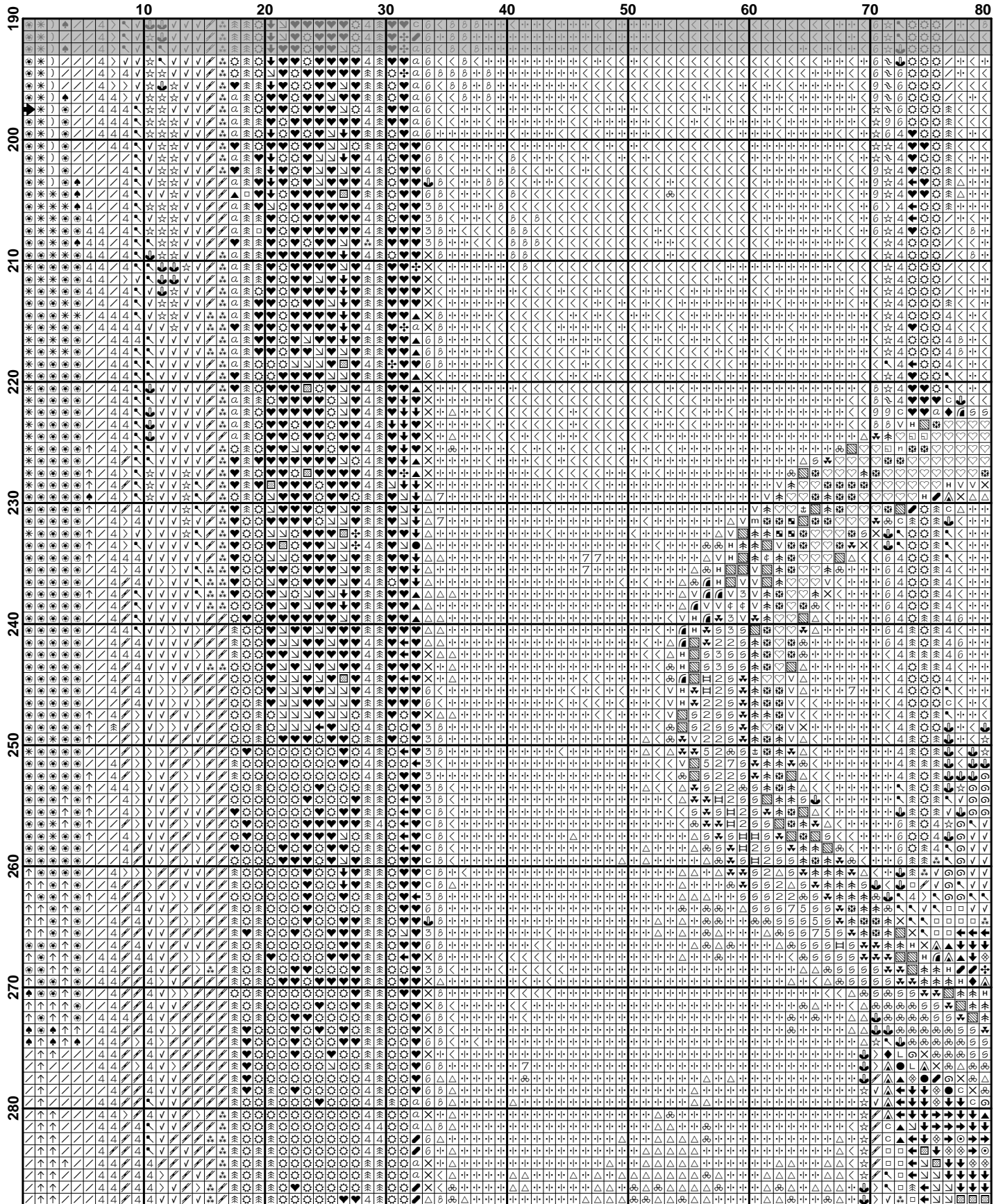
	10	20	30	40	50	60	70	80
100
110
120
130
140
150
160
170
180
190



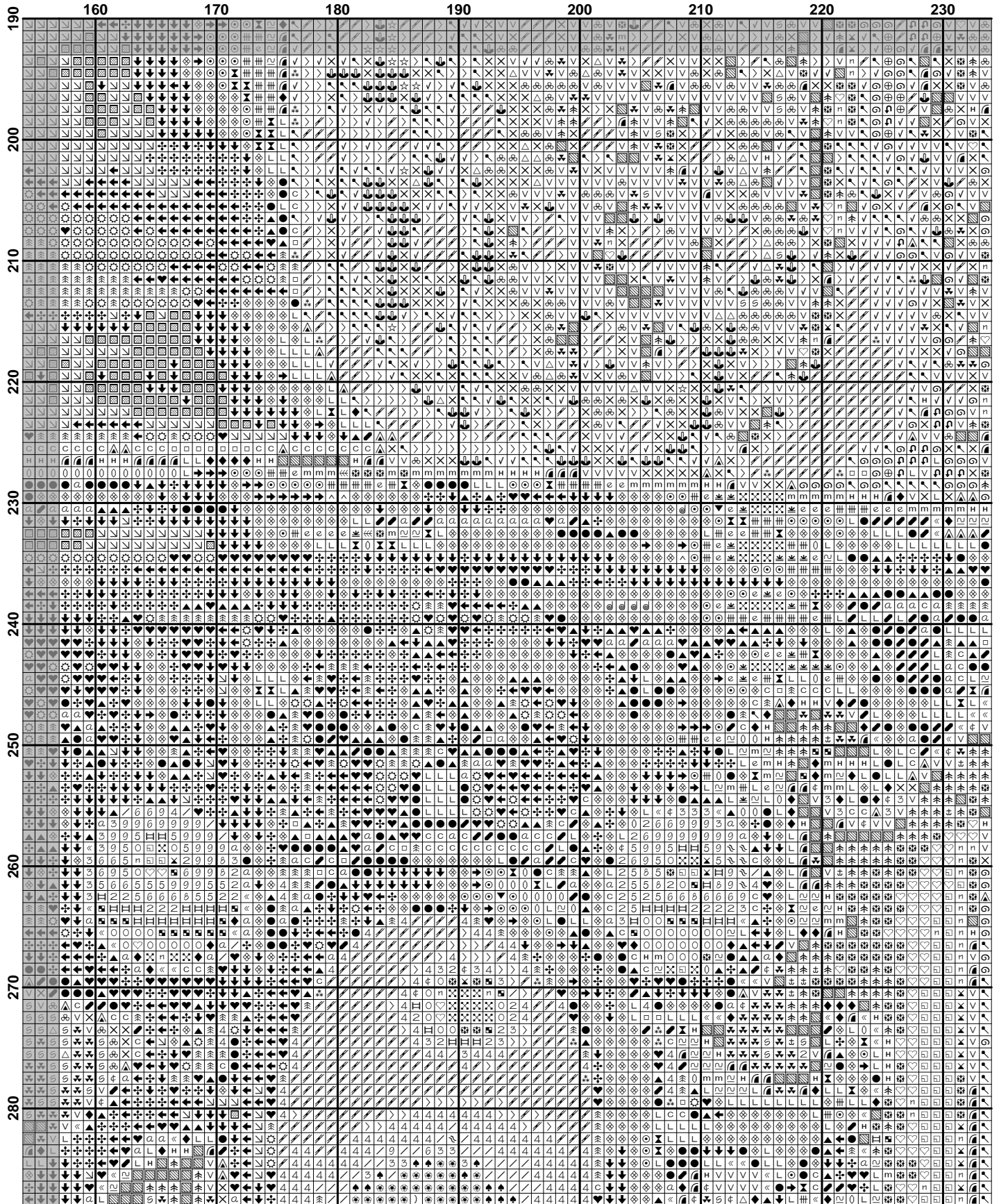


	240	250	260	270	280	290	300	310
100
110
120
130
140
150
160
170
180
190

	310	320	330	340	350
100
110
120
130
140
150
160
170
180
190

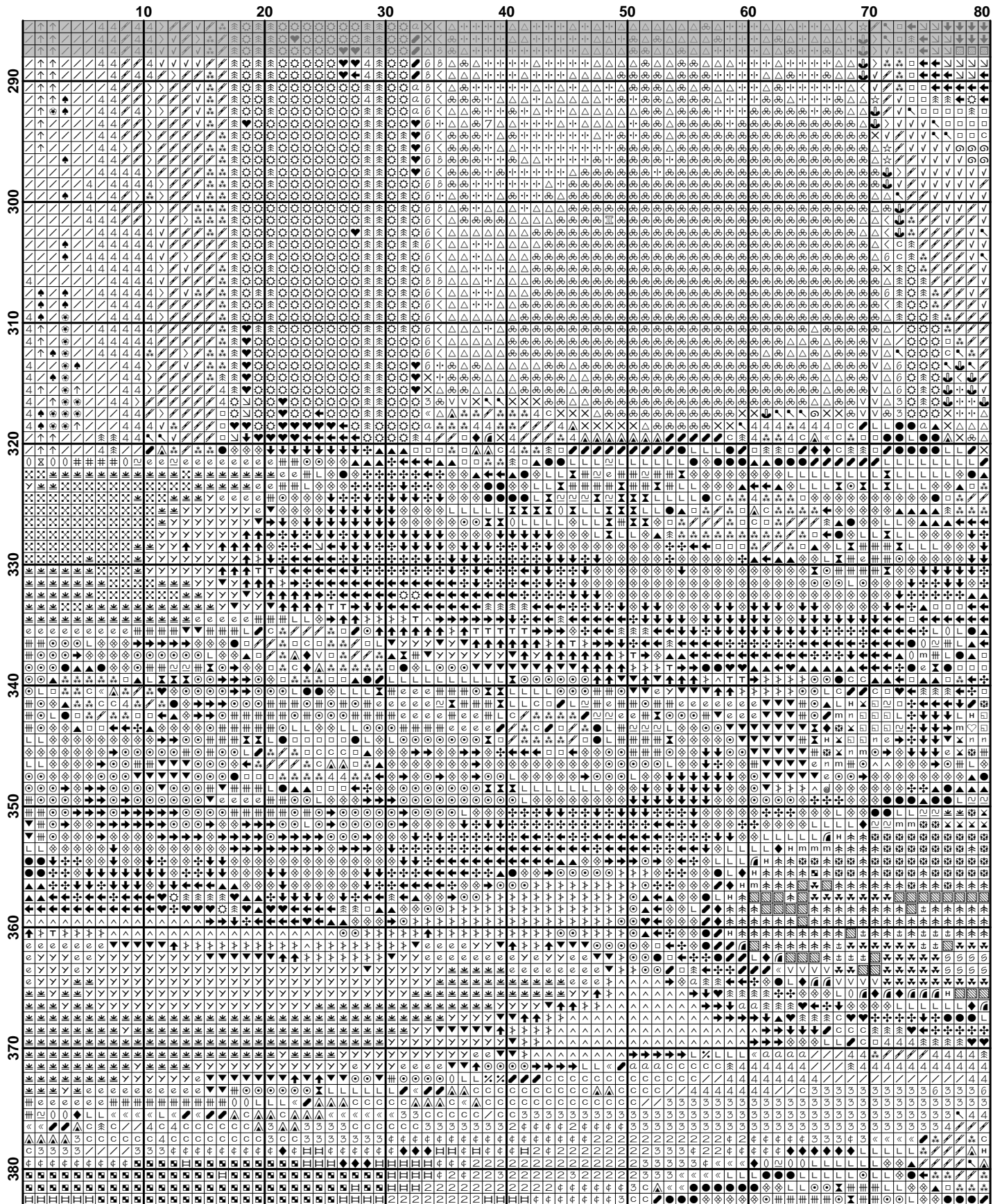


	80	90	100	110	120	130	140	150
190								
200								
210								
220								
230								
240								
250								
260								
270								
280								



190	240	250	260	270	280	290	300	310
190	191	192	193	194	195	196	197	198
200	201	202	203	204	205	206	207	208
210	211	212	213	214	215	216	217	218
220	221	222	223	224	225	226	227	228
230	231	232	233	234	235	236	237	238
240	241	242	243	244	245	246	247	248
250	251	252	253	254	255	256	257	258
260	261	262	263	264	265	266	267	268
270	271	272	273	274	275	276	277	278
280	281	282	283	284	285	286	287	288

	310	320	330	340	350
190
200
210
220
230
240
250
260
270
280



	80	90	100	110	120	130	140	150
290
300
310
320
330
340
350
360
370
380

	160	170	180	190	200	210	220	230
290
300
310
320
330
340
350
360
370
380

	240	250	260	270	280	290	300	310	320	330	340	350	360	370	380
290
300
310
320
330
340
350
360
370
380

