

Heaven and Earth Designs

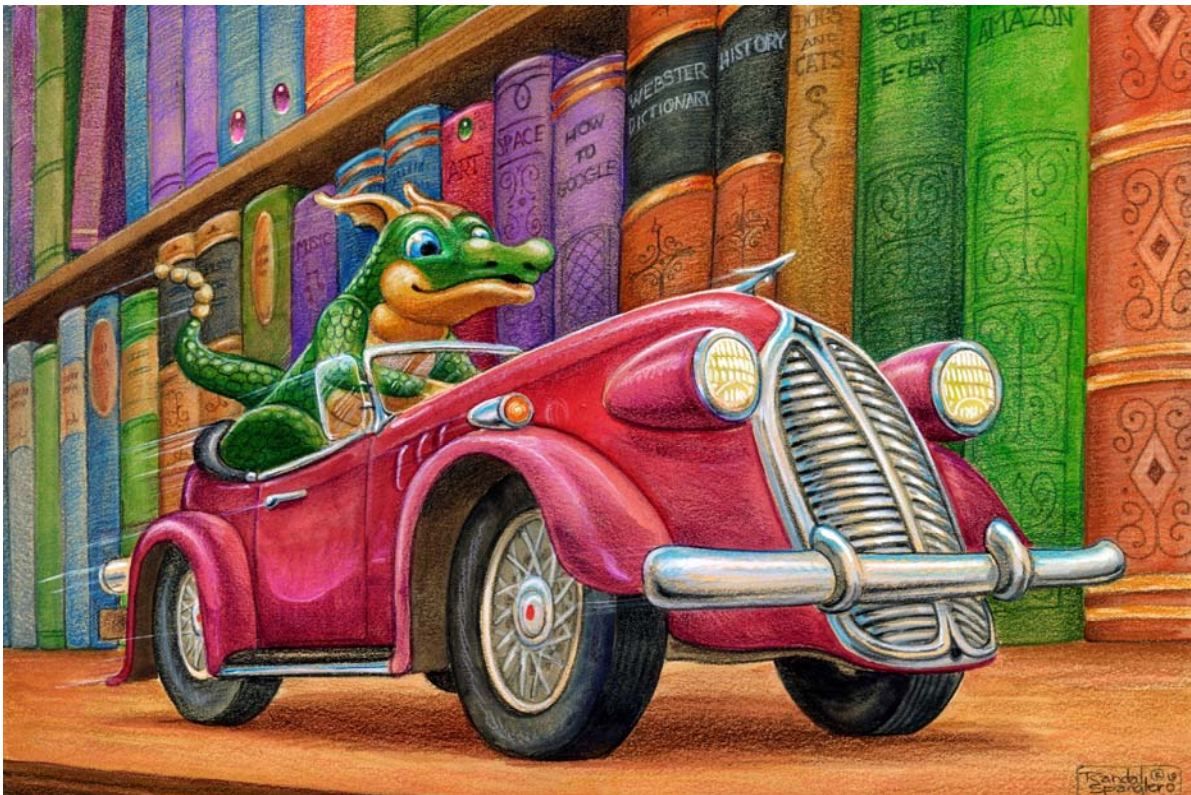
Cruising The Information Highway

(Large Format)

Chart No: HAERAS 1901

Chart Design By Michele Sayetta

Artwork by Randal Spangler



Finished Design Size 400 W by 276 H (16 WX 11 inches on 25ct)
(This Chart Contains 87 Colors)

Heaven and Earth Designs LLC

1373 45th Ave SW

Willmar MN 56201

320-214-7998

www.heavenandearthdesigns.com

Copyright Heaven and Earth Designs LLC 2010

Designs © [2010] Randal Spangler, <http://www.randalspangler.com/>

Instructions

The model for Cruising The Information Highway is recommended to be stitched over 1 on 25 count fabric but you may use any count that you are comfortable with. Please use 1 strand of floss or 2 depending on your coverage preference. Charts are recommended to be stitched from page 1 top left to the last page bottom right.

If the chart contains Kreinik 032 #4 (very fine braid) we recommend that you experiment with a couple of options. Start with 1 strand of Kreinik 032 Blending Filament with one strand of white as well as trying the Very Fine Braid to determine the look that you like most.

You may also use the tent stitch or full crosses depending on your preference.














We thank you for purchasing this design and welcome any questions or comments that you may have.

Pattern Name: Cruising The Information Highway
Designed By: Michele Sayetta/Artist Randal Spangler
Company: Heaven and Earth Designs LLC
Copyright: 2010
Fabric: Linen 25, White
 400w X 276h Stitches
Size: 25 Count, 16w X 11h in

Floss Used for Full Stitches:

Symbol	Strands	Type	Number	Color
■	2	DMC	150	Dusty Rose-ULVYDK
⋈	2	DMC	152	Shell Pink-MDLT
6	2	DMC	154	Grape-VYDK
⊖	2	DMC	159	Gray Blue-LT
△	2	DMC	160	Gray Blue-MD
∪	2	DMC	161	Gray Blue
∨	2	DMC	169	Pewter-LT
4	2	DMC	208	Lavender-VYDK
➔	2	DMC	300	Mahogany-VYDK
∩	2	DMC	301	Mahogany-MD
⊘	2	DMC	309	Rose-DK
⊞	2	DMC	310	Black
⋈	2	DMC	312	Baby Blue-VYDK
⊗	2	DMC	315	Antique Mauve-VYDK
♡	2	DMC	317	Pewter Gray
5	2	DMC	327	Violet-VYDK
⊗	2	DMC	349	Coral-DK
☆	2	DMC	356	Terra Cotta-MD
⊕	2	DMC	372	Mustard-LT
↑	2	DMC	400	Mahogany-DK
♥	2	DMC	402	Mahogany-VYLT
×	2	DMC	413	Pewter Gray-DK
▲	2	DMC	434	Brown-LT
▼	2	DMC	435	Brown-VYLT
e	2	DMC	436	Tan
⊕	2	DMC	469	Avocado Green
⊞	2	DMC	470	Avocado Green-LT
⋈	2	DMC	498	Christmas Red-DK
@	2	DMC	520	Fern Green-DK
3	2	DMC	550	Violet-VYDK
2	2	DMC	553	Violet
**	2	DMC	554	Violet-LT

Symbol	Strands	Type	Number	Color
■	III	2	DMC 580	Moss Green-DK
■	L	2	DMC 581	Moss Green
■	I	2	DMC 646	Beaver Gray-DK
■	∩	2	DMC 647	Beaver Gray-MD
■	△	2	DMC 648	Beaver Gray-LT
■	◇	2	DMC 676	Old Gold-LT
■	⊖	2	DMC 730	Olive Green-VYDK
■	‡	2	DMC 779	Cocoa-DK
■	⊙	2	DMC 780	Topaz-ULVYDK
■	7	2	DMC 791	Cornflower Blue-VYDK
■	9	2	DMC 798	Delft Blue-DK
■	8	2	DMC 799	Delft Blue-MD
■	#	2	DMC 814	Garnet-DK
■	ρ	2	DMC 842	Beige Brown-VYLT
■	∩	2	DMC 890	Pistachio Green-ULDK
■	↑	2	DMC 902	Garnet-VYDK
■	⊕	2	DMC 904	Parrot Green-VYDK
■	⊕	2	DMC 905	Parrot Green-DK
■	≡	2	DMC 906	Parrot Green-MD
■	//	2	DMC 918	Red Copper-DK
■	♯	2	DMC 919	Red Copper
■	T	2	DMC 920	Copper-MD
■	■	2	DMC 921	Copper
■	∩	2	DMC 930	Antique Blue-DK
■	⊗	2	DMC 931	Antique Blue-MD
■	⊗	2	DMC 932	Antique Blue-LT
■	□	2	DMC 938	Coffee Brown-ULDK
■	←	2	DMC 976	Golden Brown-MD
■	↓	2	DMC 977	Golden Brown-LT
■	●	2	DMC 3012	Khaki Green-MD
■	m	2	DMC 3031	Mocha Brown-VYDK
■	⊗	2	DMC 3042	Antique Violet-LT
■	○	2	DMC 3072	Beaver Gray-VYLT
■	▨	2	DMC 3346	Hunter Green
■	√	2	DMC 3348	Yellow Green-LT
■	«	2	DMC 3350	Dusty Rose-ULDK
■	⊗	2	DMC 3364	Pine Green
■	•	2	DMC 3371	Black Brown
■	0	2	DMC 3607	Plum-LT
■	/	2	DMC 3608	Plum-VYLT
■	*	2	DMC 3722	Shell Pink-MD
■	>	2	DMC 3752	Antique Blue-VYLT

Symbol	Strands	Type	Number	Color
 ✕	2	DMC	3776	Mahogany-LT
 ^	2	DMC	3778	Terra Cotta-LT
 n	2	DMC	3787	Brown Gray-DK
 †	2	DMC	3799	Pewter Gray-VYDK
 (2	DMC	3803	Mauve-MD
 x	2	DMC	3830	Terra Cotta-MD
 \$	2	DMC	3831	Raspberry-DK
 ♠	2	DMC	3835	Grape-MD
 a	2	DMC	3857	Rosewood-DK
 c	2	DMC	3860	Cocoa
 ◆	2	DMC	3861	Cocoa-LT
 ↘	2	DMC	3862	Mocha Beige-DK
 ∅	2	DMC	3863	Mocha Beige-MD

Usage Summary

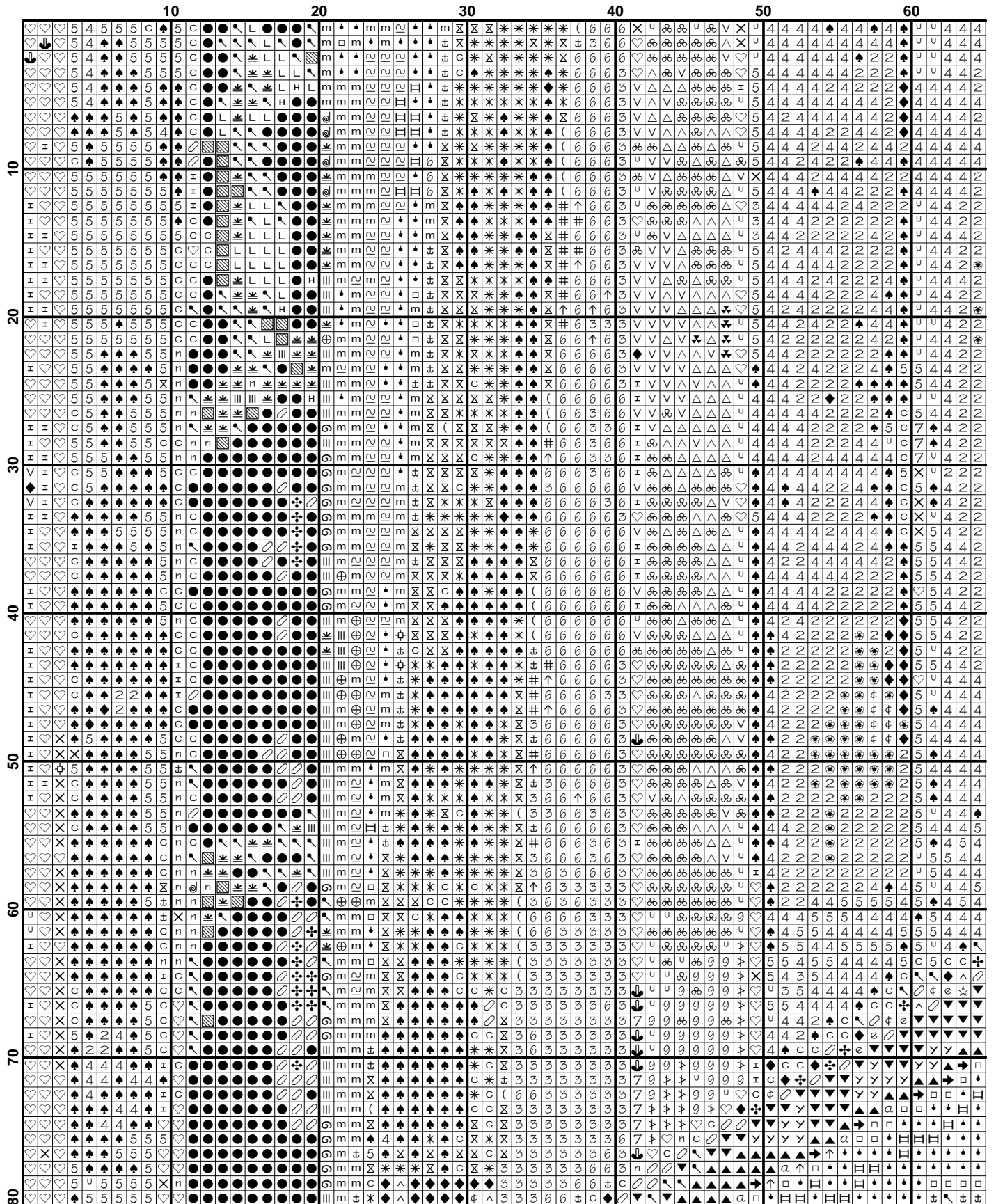
Strands Per Skein: 6

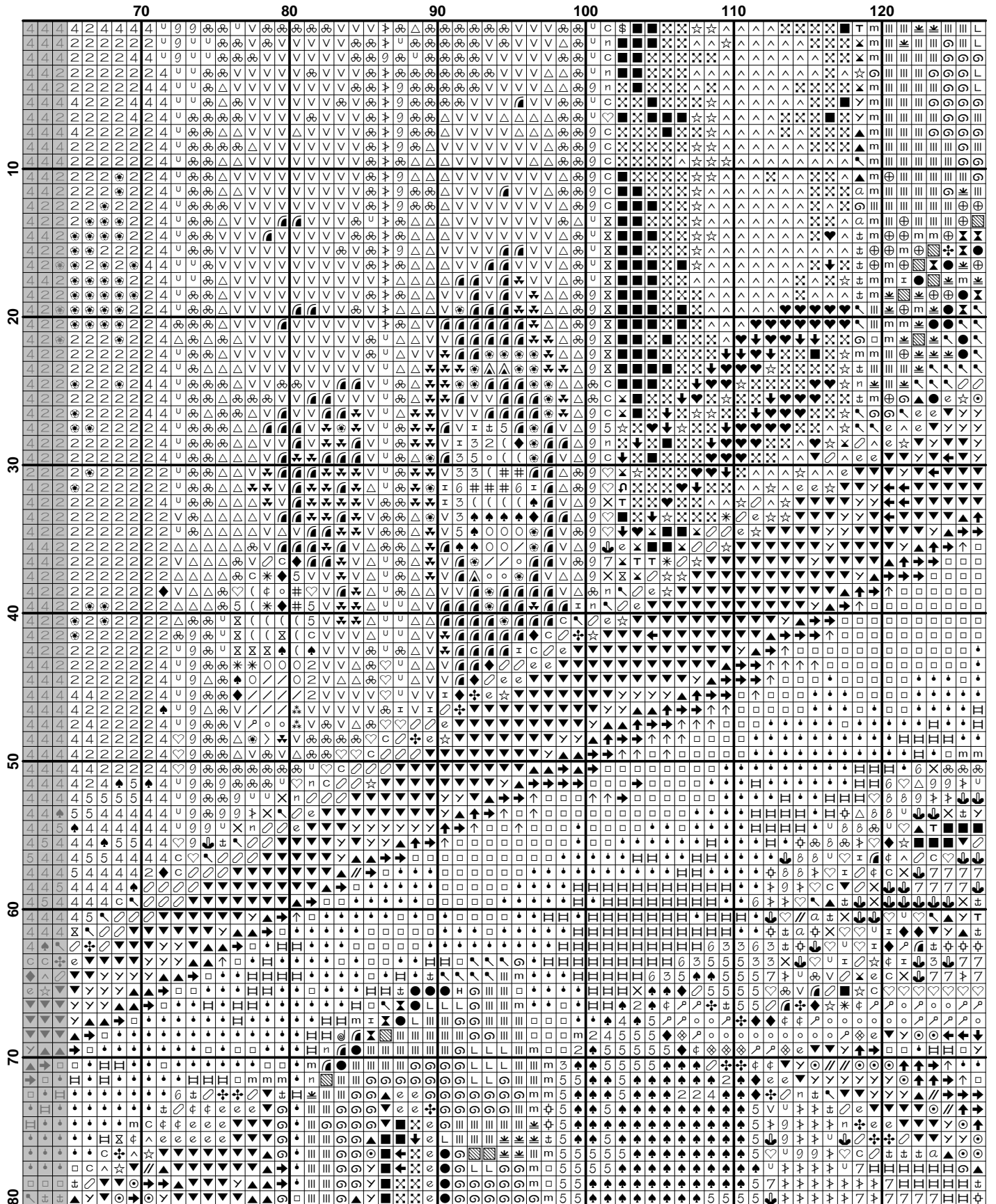
Skein Length: 313.0 in

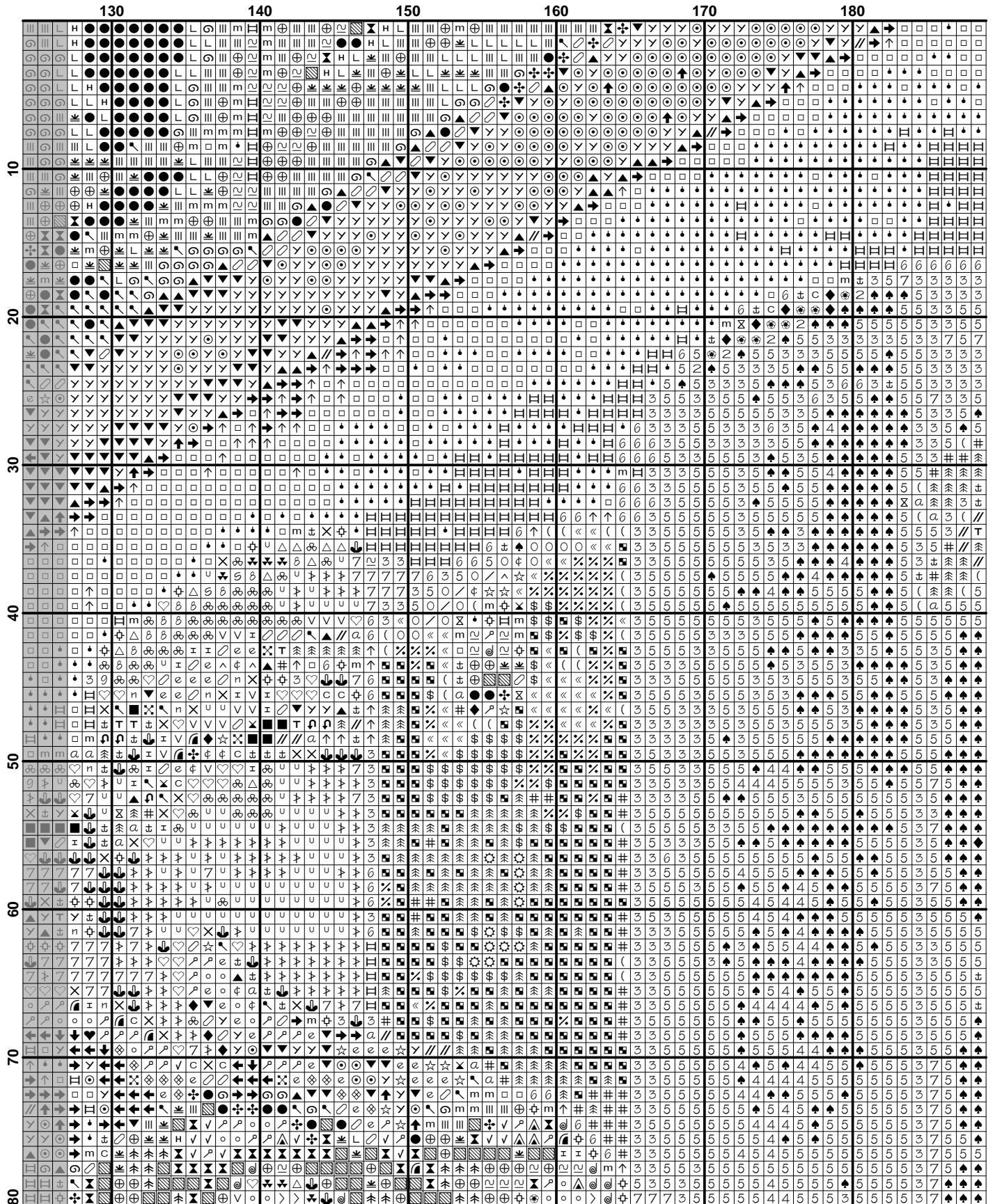
Type	Number	Full	Half	Quarter	Petite	Back(in)	Str(in)	Spec(in)	French	Bead	Skein Est.
DMC 150	150	3079	0	0	0	0.0	0.0	0.0	0	0	1.000
DMC 152	152	546	0	0	0	0.0	0.0	0.0	0	0	1.000
DMC 154	154	1339	0	0	0	0.0	0.0	0.0	0	0	1.000
DMC 159	159	140	0	0	0	0.0	0.0	0.0	0	0	1.000
DMC 160	160	480	0	0	0	0.0	0.0	0.0	0	0	1.000
DMC 161	161	698	0	0	0	0.0	0.0	0.0	0	0	1.000
DMC 169	169	1438	0	0	0	0.0	0.0	0.0	0	0	1.000
DMC 208	208	689	0	0	0	0.0	0.0	0.0	0	0	1.000
DMC 300	300	1558	0	0	0	0.0	0.0	0.0	0	0	1.000
DMC 301	301	2721	0	0	0	0.0	0.0	0.0	0	0	1.000
DMC 309	309	1869	0	0	0	0.0	0.0	0.0	0	0	1.000
DMC 310	310	6656	0	0	0	0.0	0.0	0.0	0	0	2.000
DMC 312	312	508	0	0	0	0.0	0.0	0.0	0	0	1.000
DMC 315	315	317	0	0	0	0.0	0.0	0.0	0	0	1.000
DMC 317	317	1544	0	0	0	0.0	0.0	0.0	0	0	1.000
DMC 327	327	2347	0	0	0	0.0	0.0	0.0	0	0	1.000
DMC 349	349	487	0	0	0	0.0	0.0	0.0	0	0	1.000
DMC 356	356	1085	0	0	0	0.0	0.0	0.0	0	0	1.000
DMC 372	372	302	0	0	0	0.0	0.0	0.0	0	0	1.000
DMC 400	400	711	0	0	0	0.0	0.0	0.0	0	0	1.000
DMC 402	402	1049	0	0	0	0.0	0.0	0.0	0	0	1.000
DMC 413	413	1462	0	0	0	0.0	0.0	0.0	0	0	1.000
DMC 434	434	968	0	0	0	0.0	0.0	0.0	0	0	1.000
DMC 435	435	1863	0	0	0	0.0	0.0	0.0	0	0	1.000
DMC 436	436	1071	0	0	0	0.0	0.0	0.0	0	0	1.000
DMC 469	469	1061	0	0	0	0.0	0.0	0.0	0	0	1.000
DMC 470	470	3292	0	0	0	0.0	0.0	0.0	0	0	1.000
DMC 498	498	2083	0	0	0	0.0	0.0	0.0	0	0	1.000
DMC 520	520	629	0	0	0	0.0	0.0	0.0	0	0	1.000
DMC 550	550	1101	0	0	0	0.0	0.0	0.0	0	0	1.000
DMC 553	553	921	0	0	0	0.0	0.0	0.0	0	0	1.000
DMC 554	554	124	0	0	0	0.0	0.0	0.0	0	0	1.000
DMC 580	580	694	0	0	0	0.0	0.0	0.0	0	0	1.000
DMC 581	581	790	0	0	0	0.0	0.0	0.0	0	0	1.000
DMC 646	646	1602	0	0	0	0.0	0.0	0.0	0	0	1.000
DMC 647	647	1082	0	0	0	0.0	0.0	0.0	0	0	1.000

Type	Number	Full	Half	Quarter	Petite	Back(in)	Str(in)	Spec(in)	French	Bead	Skein Est.
DMC 648	648	728	0	0	0	0.0	0.0	0.0	0	0	1.000
DMC 676	676	416	0	0	0	0.0	0.0	0.0	0	0	1.000
DMC 730	730	598	0	0	0	0.0	0.0	0.0	0	0	1.000
DMC 779	779	744	0	0	0	0.0	0.0	0.0	0	0	1.000
DMC 780	780	1216	0	0	0	0.0	0.0	0.0	0	0	1.000
DMC 791	791	473	0	0	0	0.0	0.0	0.0	0	0	1.000
DMC 798	798	131	0	0	0	0.0	0.0	0.0	0	0	1.000
DMC 799	799	64	0	0	0	0.0	0.0	0.0	0	0	1.000
DMC 814	814	2311	0	0	0	0.0	0.0	0.0	0	0	1.000
DMC 842	842	1026	0	0	0	0.0	0.0	0.0	0	0	1.000
DMC 890	890	1364	0	0	0	0.0	0.0	0.0	0	0	1.000
DMC 902	902	890	0	0	0	0.0	0.0	0.0	0	0	1.000
DMC 904	904	2569	0	0	0	0.0	0.0	0.0	0	0	1.000
DMC 905	905	2174	0	0	0	0.0	0.0	0.0	0	0	1.000
DMC 906	906	894	0	0	0	0.0	0.0	0.0	0	0	1.000
DMC 918	918	1955	0	0	0	0.0	0.0	0.0	0	0	1.000
DMC 919	919	1223	0	0	0	0.0	0.0	0.0	0	0	1.000
DMC 920	920	1821	0	0	0	0.0	0.0	0.0	0	0	1.000
DMC 921	921	1814	0	0	0	0.0	0.0	0.0	0	0	1.000
DMC 930	930	240	0	0	0	0.0	0.0	0.0	0	0	1.000
DMC 931	931	849	0	0	0	0.0	0.0	0.0	0	0	1.000
DMC 932	932	310	0	0	0	0.0	0.0	0.0	0	0	1.000
DMC 938	938	1786	0	0	0	0.0	0.0	0.0	0	0	1.000
DMC 976	976	367	0	0	0	0.0	0.0	0.0	0	0	1.000
DMC 977	977	3463	0	0	0	0.0	0.0	0.0	0	0	1.000
DMC 3012	3012	891	0	0	0	0.0	0.0	0.0	0	0	1.000
DMC 3031	3031	1284	0	0	0	0.0	0.0	0.0	0	0	1.000
DMC 3042	3042	715	0	0	0	0.0	0.0	0.0	0	0	1.000
DMC 3072	3072	2818	0	0	0	0.0	0.0	0.0	0	0	1.000
DMC 3346	3346	1960	0	0	0	0.0	0.0	0.0	0	0	1.000
DMC 3348	3348	90	0	0	0	0.0	0.0	0.0	0	0	1.000
DMC 3350	3350	1896	0	0	0	0.0	0.0	0.0	0	0	1.000
DMC 3364	3364	324	0	0	0	0.0	0.0	0.0	0	0	1.000
DMC 3371	3371	3352	0	0	0	0.0	0.0	0.0	0	0	1.000
DMC 3607	3607	900	0	0	0	0.0	0.0	0.0	0	0	1.000
DMC 3608	3608	496	0	0	0	0.0	0.0	0.0	0	0	1.000
DMC 3722	3722	346	0	0	0	0.0	0.0	0.0	0	0	1.000
DMC 3752	3752	369	0	0	0	0.0	0.0	0.0	0	0	1.000
DMC 3776	3776	4943	0	0	0	0.0	0.0	0.0	0	0	2.000
DMC 3778	3778	576	0	0	0	0.0	0.0	0.0	0	0	1.000
DMC 3787	3787	999	0	0	0	0.0	0.0	0.0	0	0	1.000
DMC 3799	3799	2467	0	0	0	0.0	0.0	0.0	0	0	1.000

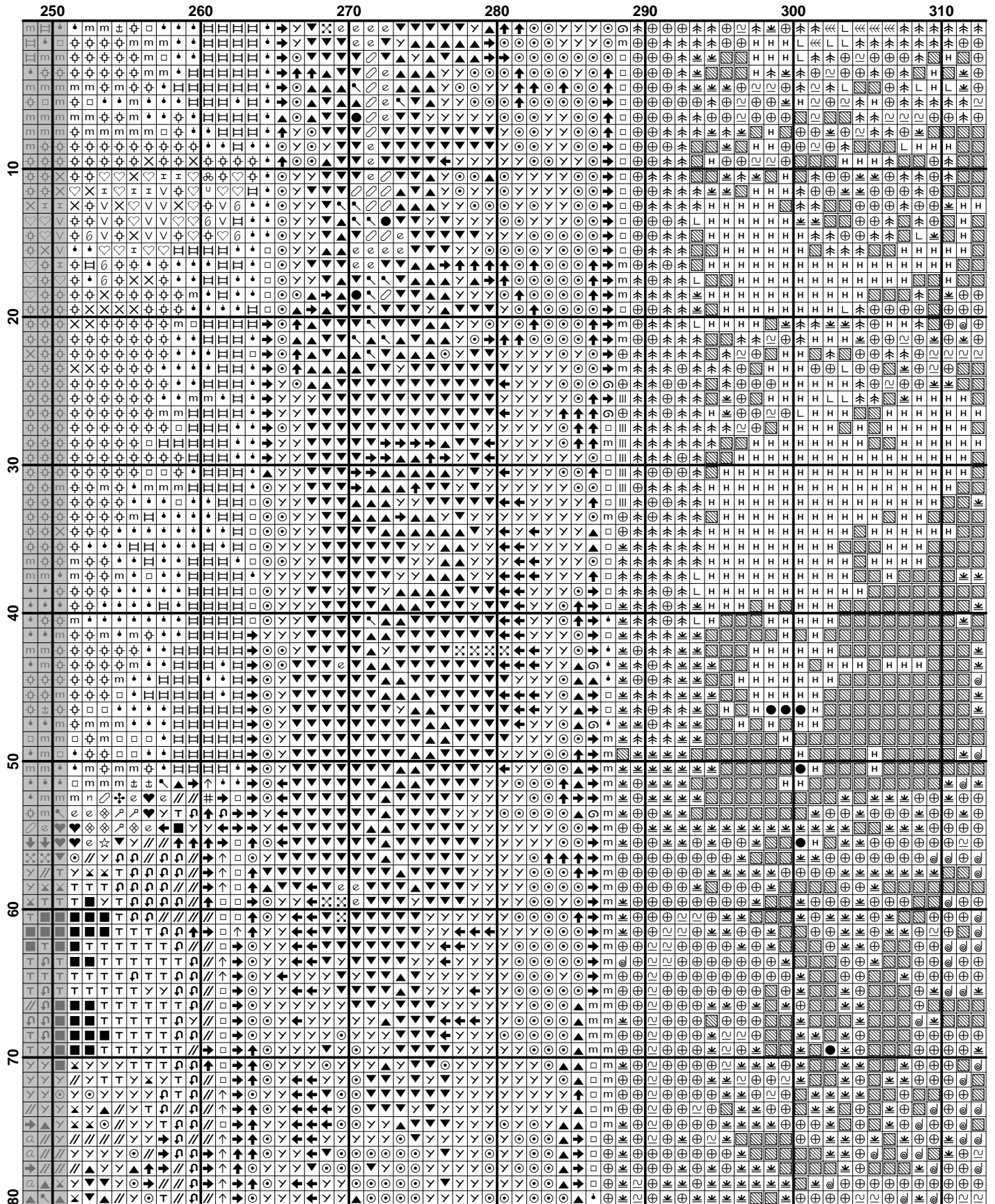
Type	Number	Full	Half	Quarter	Petite	Back(in)	Str(in)	Spec(in)	French	Bead	Skein Est.
■ DMC	3803	676	0	0	0	0.0	0.0	0.0	0	0	1.000
■ DMC	3830	1960	0	0	0	0.0	0.0	0.0	0	0	1.000
■ DMC	3831	427	0	0	0	0.0	0.0	0.0	0	0	1.000
■ DMC	3835	1567	0	0	0	0.0	0.0	0.0	0	0	1.000
■ DMC	3857	289	0	0	0	0.0	0.0	0.0	0	0	1.000
■ DMC	3860	970	0	0	0	0.0	0.0	0.0	0	0	1.000
■ DMC	3861	931	0	0	0	0.0	0.0	0.0	0	0	1.000
■ DMC	3862	634	0	0	0	0.0	0.0	0.0	0	0	1.000
■ DMC	3863	788	0	0	0	0.0	0.0	0.0	0	0	1.000



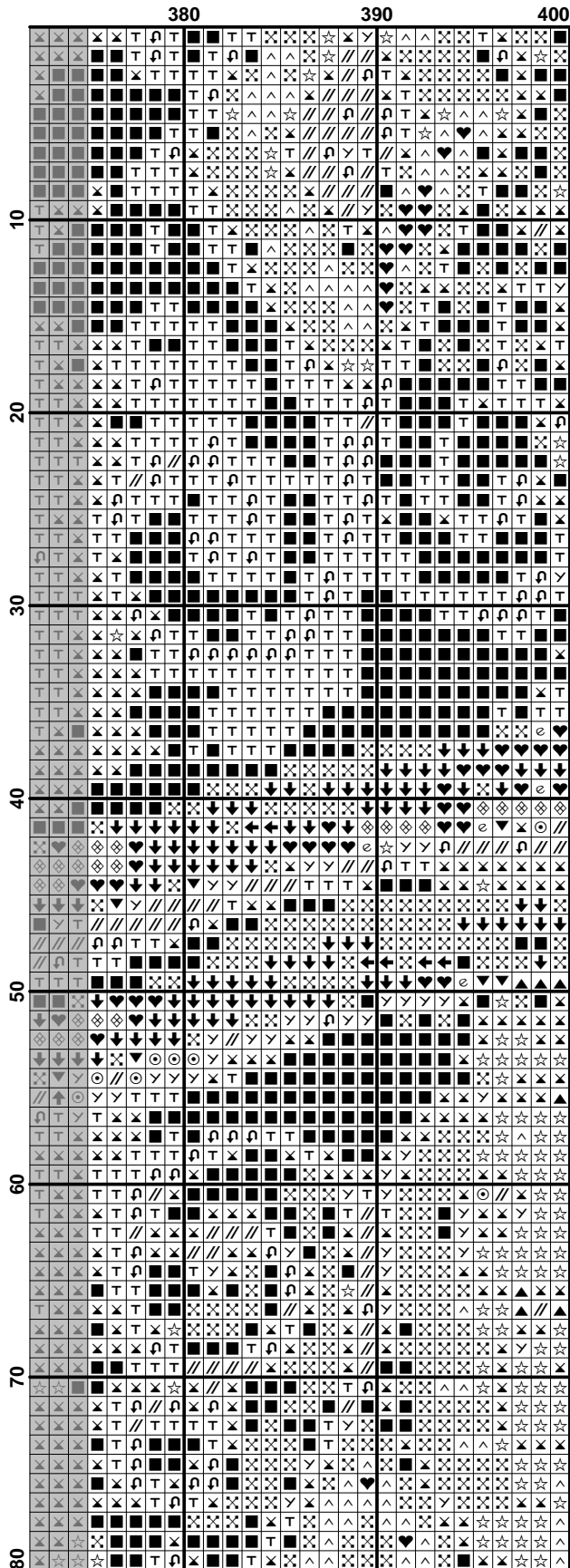


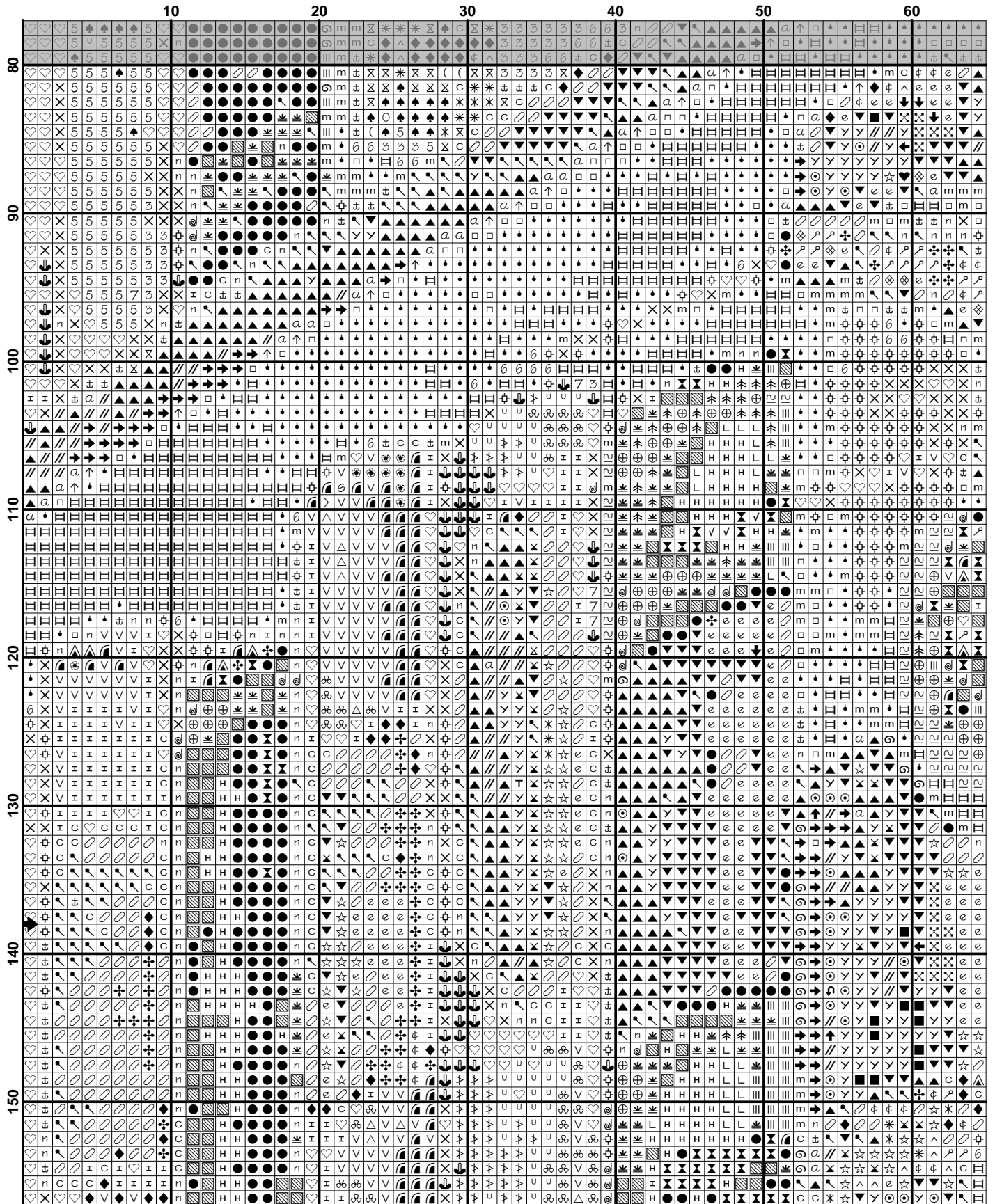


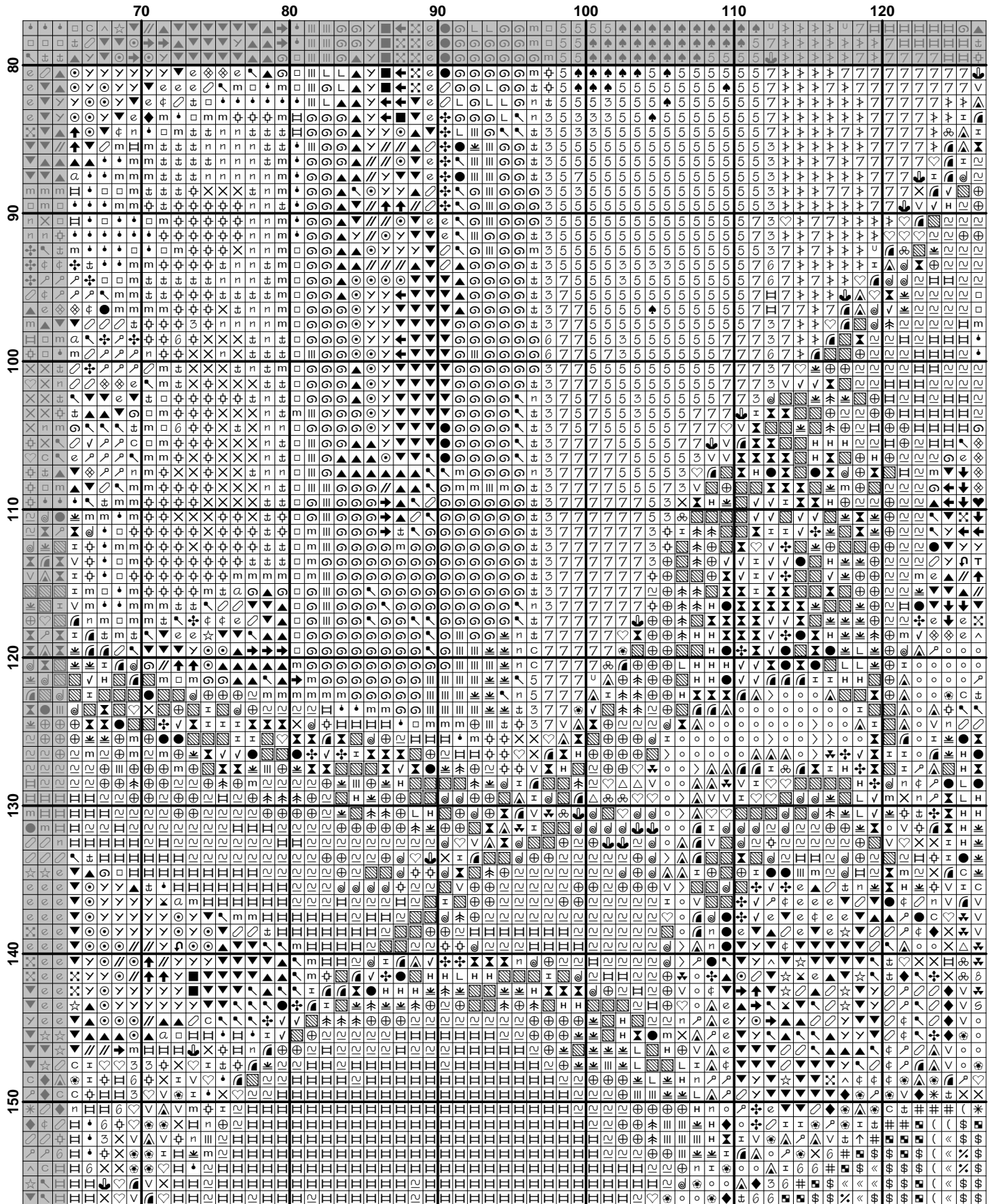
	190	200	210	220	230	240	250
10
20
30
40
50
60
70
80



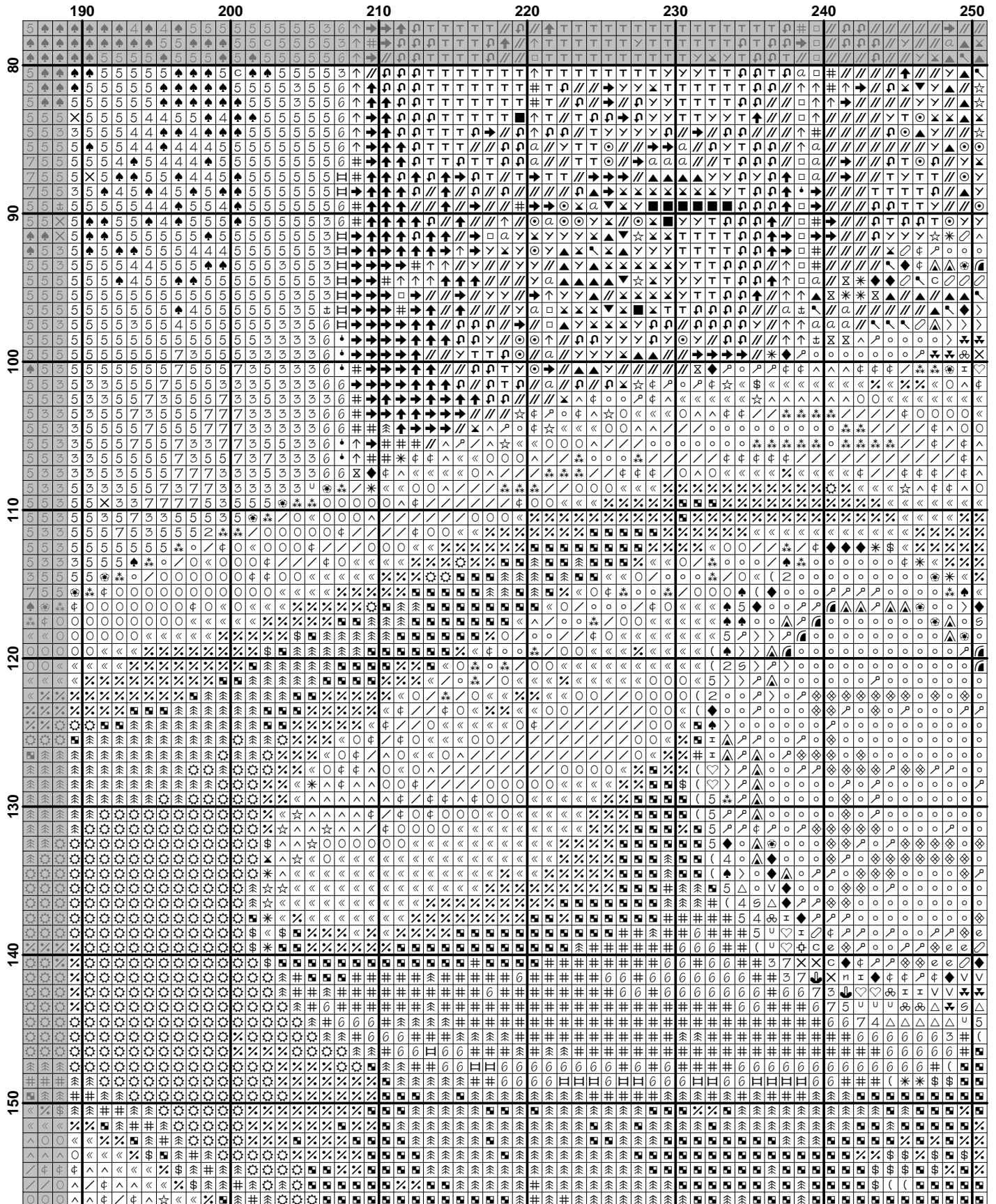
	310	320	330	340	350	360	370
10
20
30
40
50
60
70
80

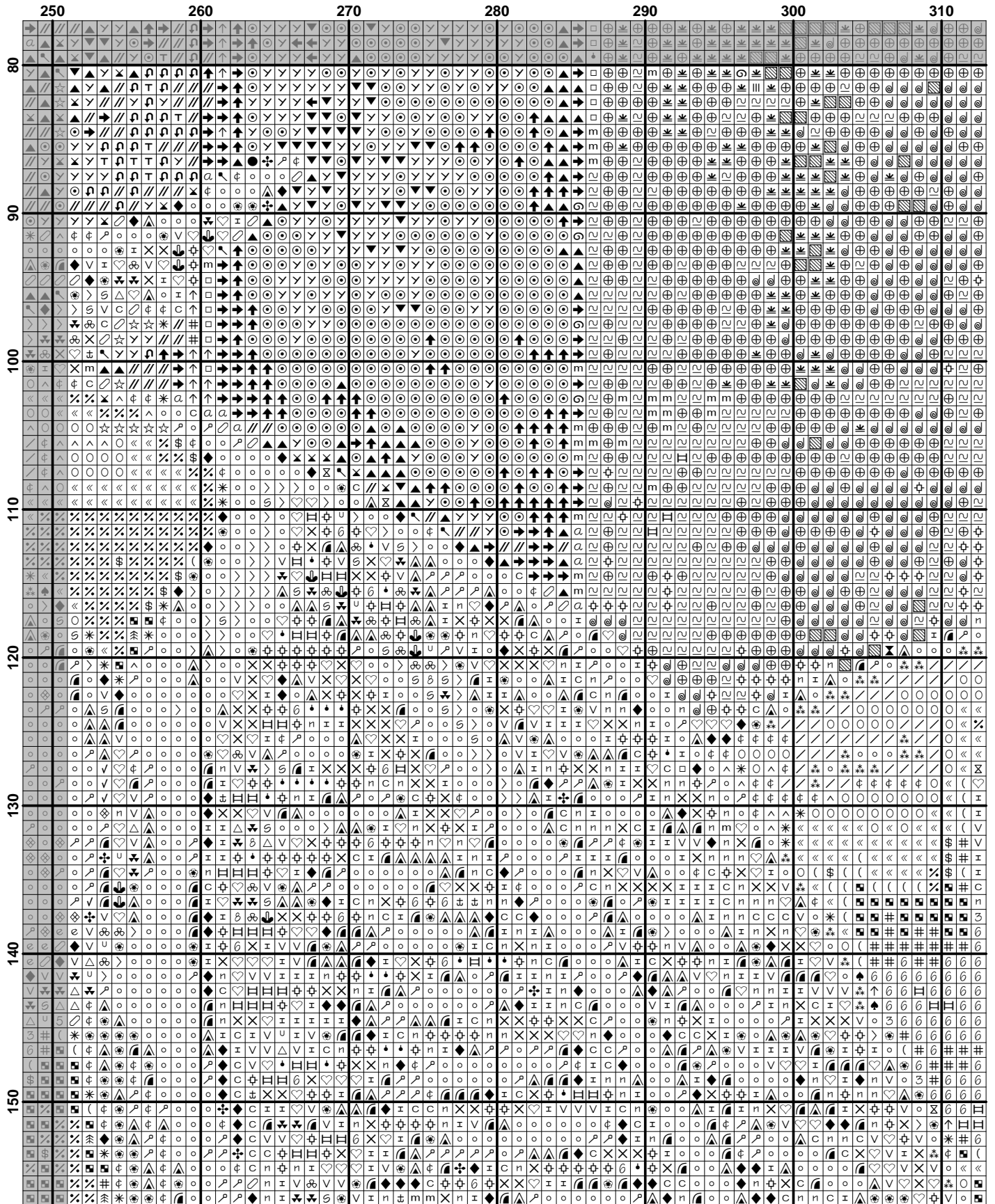


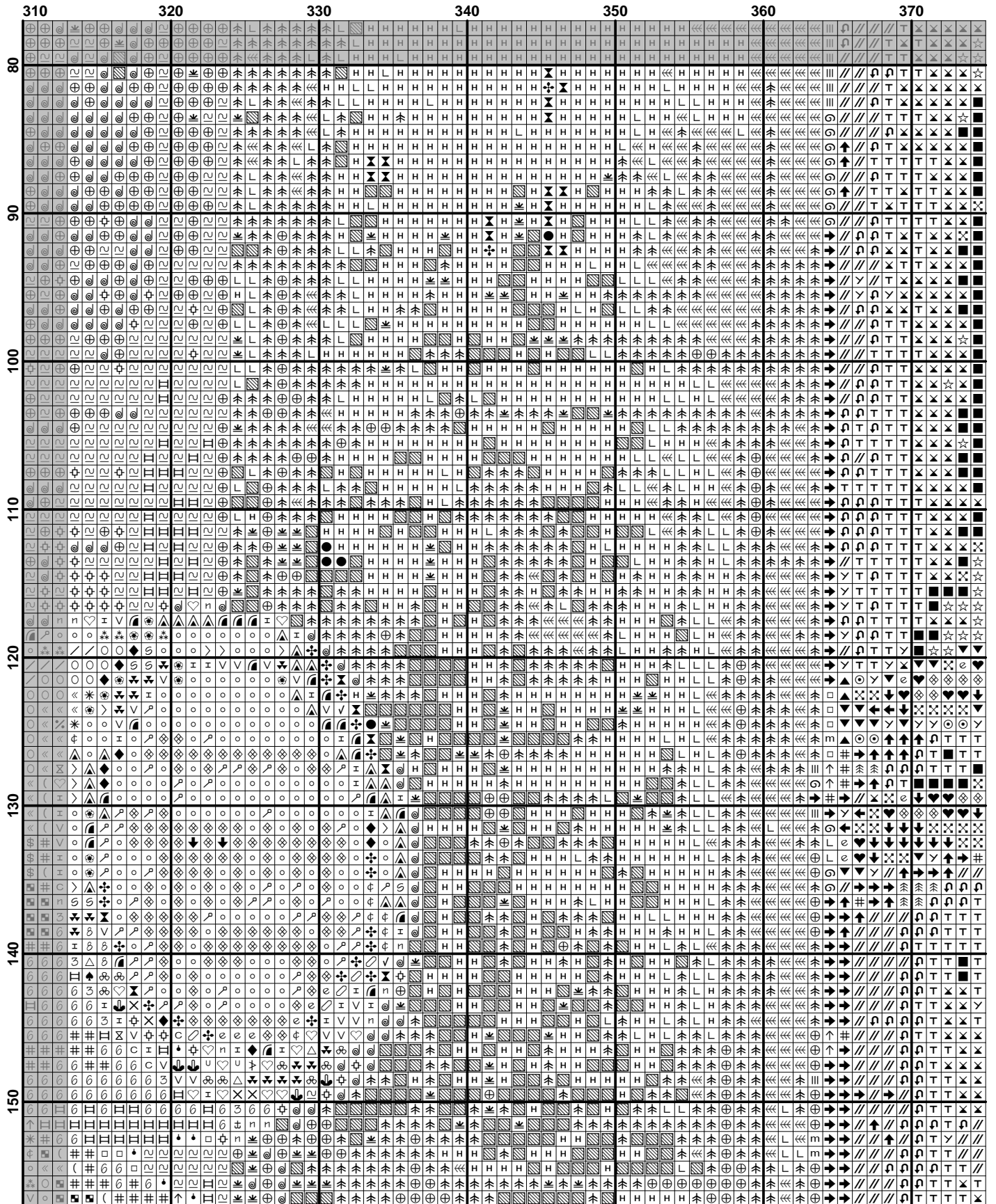


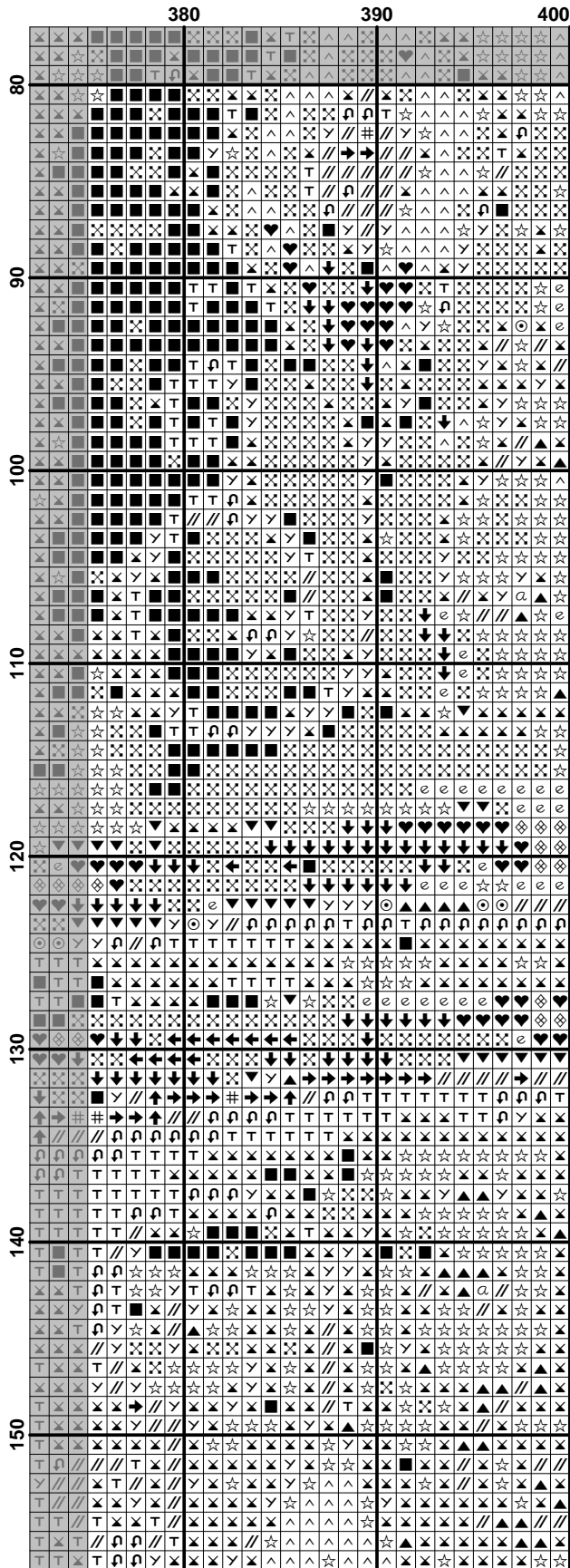


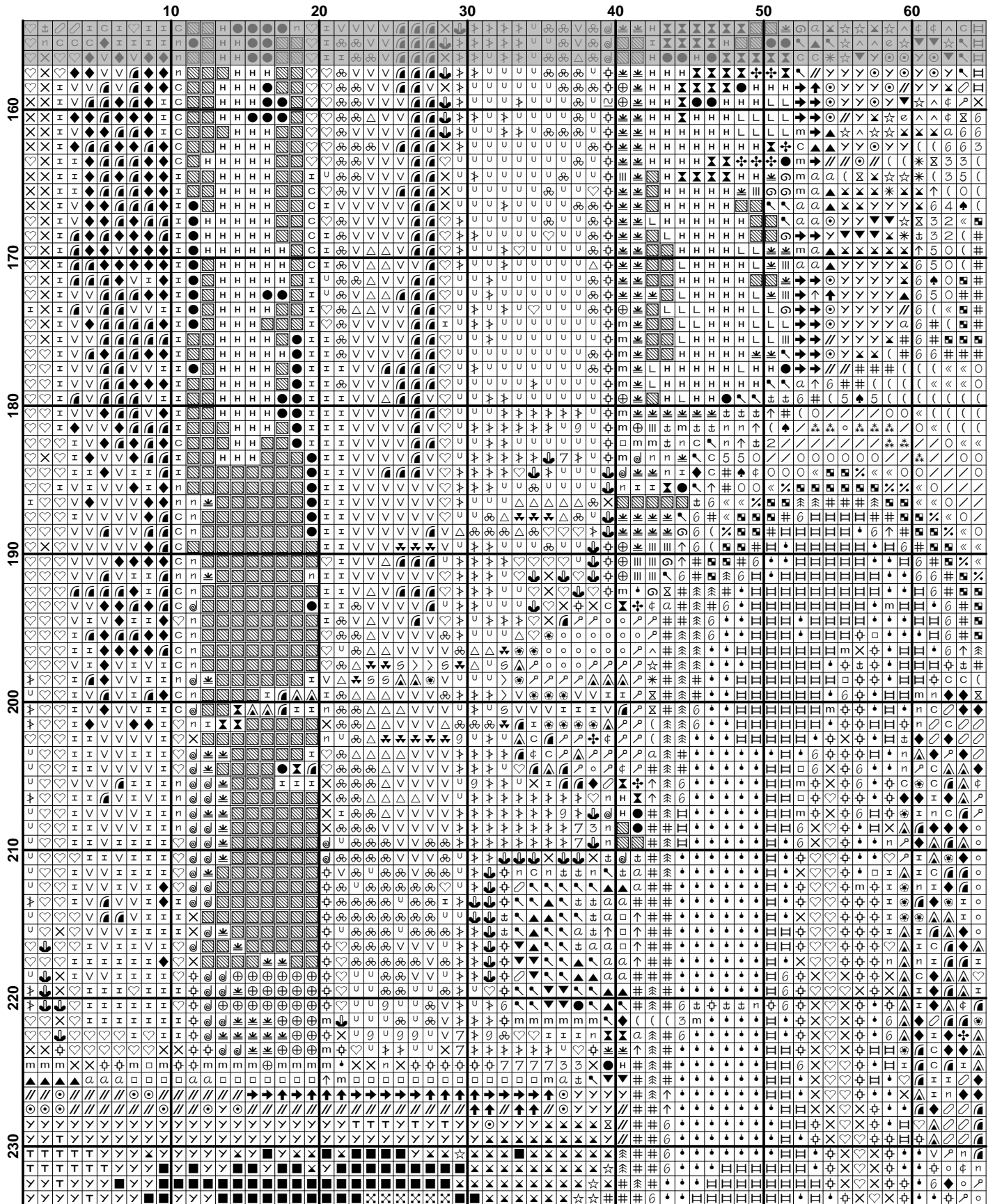
	130	140	150	160	170	180
80	7 7 7 7	7 7 7 7	7 7 7 7	7 7 7 7	7 7 7 7	7 7 7 7
90	7 7 7 7	7 7 7 7	7 7 7 7	7 7 7 7	7 7 7 7	7 7 7 7
100	7 7 7 7	7 7 7 7	7 7 7 7	7 7 7 7	7 7 7 7	7 7 7 7
110	7 7 7 7	7 7 7 7	7 7 7 7	7 7 7 7	7 7 7 7	7 7 7 7
120	7 7 7 7	7 7 7 7	7 7 7 7	7 7 7 7	7 7 7 7	7 7 7 7
130	7 7 7 7	7 7 7 7	7 7 7 7	7 7 7 7	7 7 7 7	7 7 7 7
140	7 7 7 7	7 7 7 7	7 7 7 7	7 7 7 7	7 7 7 7	7 7 7 7
150	7 7 7 7	7 7 7 7	7 7 7 7	7 7 7 7	7 7 7 7	7 7 7 7

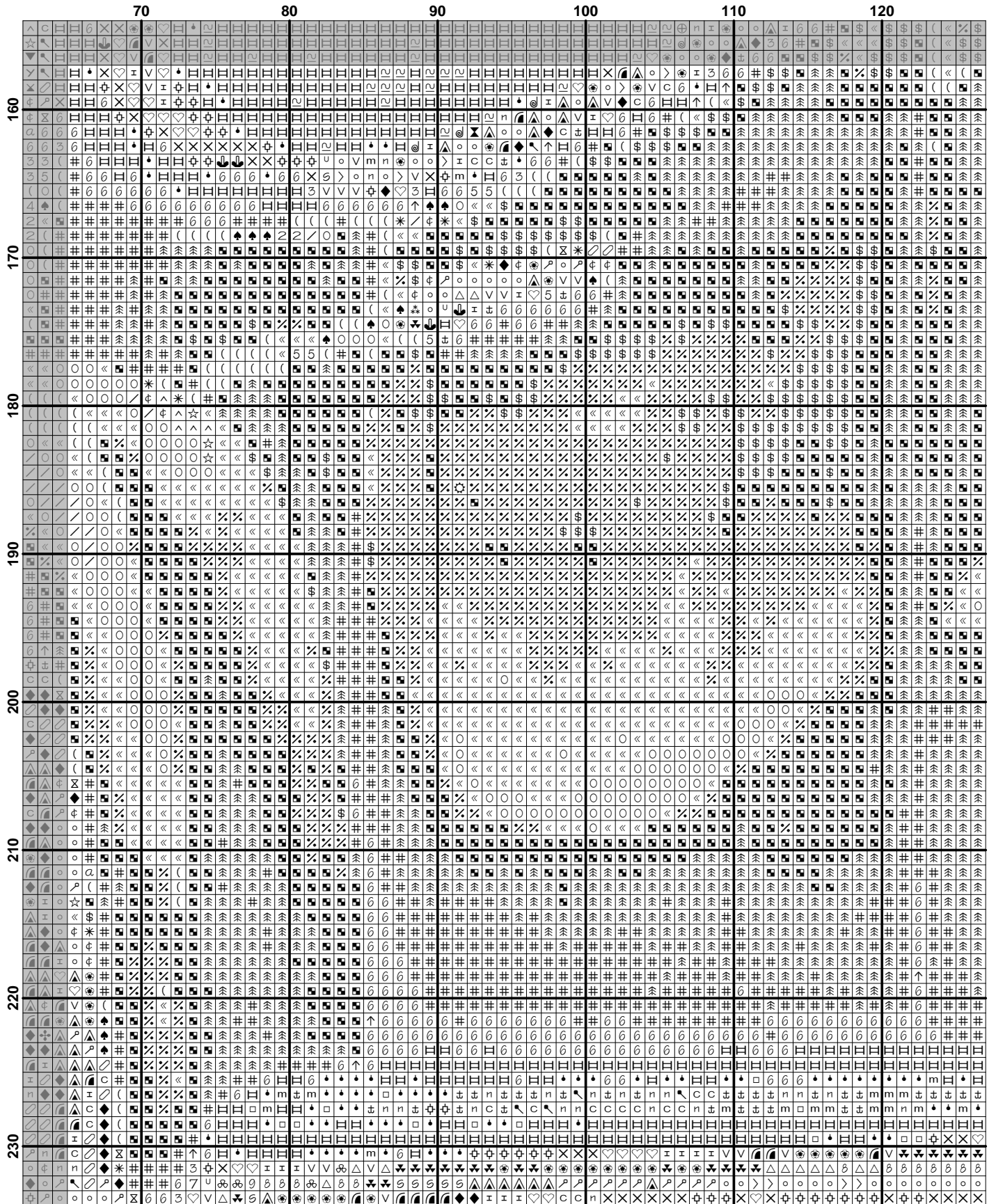


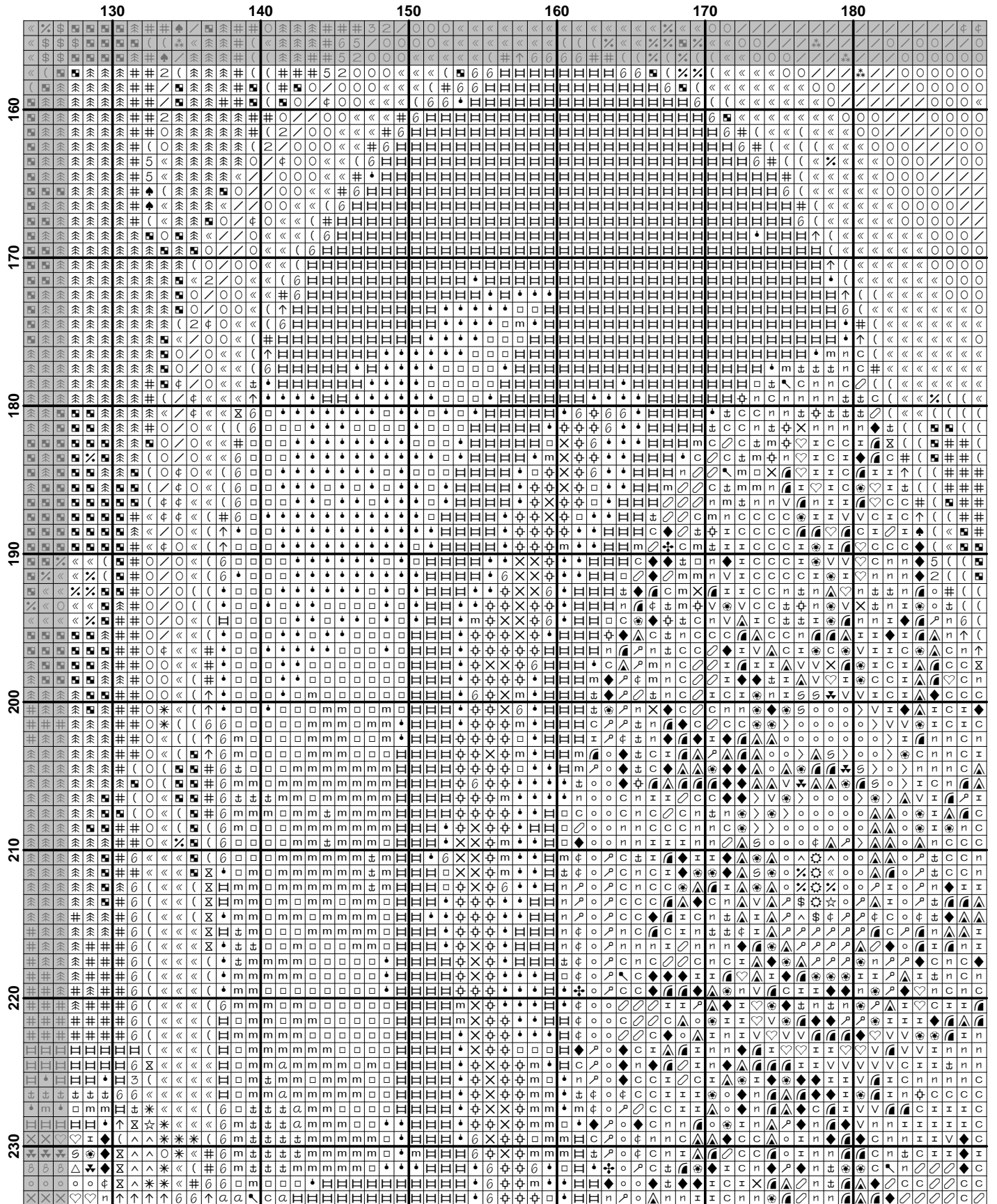












	190	200	210	220	230	240	250
160
170
180
190
200
210
220
230

