

## 621 Golden Puppy



**This pattern may not be copied, sold or in any other way handled in any way that violates the international copyright laws. If you get hold of this pattern (and or this document) in any other way than via a direct download from [www.goldenkite.com](http://www.goldenkite.com) or via a mail from us, you should report that to us at [legal\\_actions@goldenkite.com](mailto:legal_actions@goldenkite.com) .**

Copyright ? 2003-, Golden Kite. All rights reserved.

## Instructions

Thank you for choosing Golden Kite products!  
We hope you will have lots of fun with this cross-stitch pattern!

### Fabric

Press the fabric with an iron if needed. A good thing to prevent the fabric from fraying is to machine zigzag the edges.

It is easiest to start in the center of the design. To locate the center of the fabric, fold the fabric in half both vertically and horizontally. The center is located where these two folds meet.

### Stitches

Each length of DMC thread consists of six strands.

Use two of these strands for all stitches.

Note that some colors may be mixes (or blends) between two different pure colors. In that case take one strand of the two colors each and thread the two strands into the needle at the same time for stitching.

All stitches are full cross-stitches. No half-stitching and no back-stitching is necessary in this pattern.

All cross-stitches will be worked into the holes in the fabric from left to right. Always use the larger holes in the fabric for the stitches. Adjacent stitches should meet in the same hole. Make sure all stitches cross in the same direction.

Please be careful when washing the finished embroidery! The cotton thread may bleed when washed. Only hand wash it in lukewarm water. Remove excess water by roll it in a towel and lay it flat to air dry. Natural fabrics may shrink slightly when washed. We do not recommend washing the embroidery if not absolutely necessary and we take no responsibility for any damage that may occur.

*When you start using this product you agree that Golden Kite (Golden K), or any people working for or in association with Golden Kite (Golden K), cannot be set responsible for any physical, mental, economical or other type of damage caused by this product (including this document, pattern, threads, needles and any other parts received by you from Golden Kite (Golden K)).*

**This pattern may not be copied, sold or in any other way handled in any way that violates the international copyright laws. If you get hold of this pattern (and or this document) in any other way than via a direct download from [www.goldenkite.com](http://www.goldenkite.com) or via a mail from us, you should report that to us at [legal\\_actions@goldenkite.com](mailto:legal_actions@goldenkite.com) .**

## Golden Puppy

Stitch Count	
Horizontal:	200
Vertical:	279

Recommended Fabric Color
White.

This table tells the size of the pattern (without any margins) and the size of the fabric required to stitch the pattern (including recommended margins). 3 inch margins have been added on each side in the 'Including Margins' row.

The sizes are given for 14, 16 and 18 stitches per inch fabrics.

Make sure to use the 'Including Margins' row when cutting the piece of fabric to be used. Also make sure that 3 inch margins are enough for your stitching technique and add more margin areas if necessary.

	14				16				18			
	Width		Height		Width		Height		Width		Height	
	cm	inch	cm	inch	cm	inch	cm	inch	cm	inch	cm	inch
Pattern:	36	14.14	51	19.92	32	12.37	45	17.43	28	11	40	15.5
Including Margins:	52	21	67	26	48	19	61	24	44	18	56	22
	10				12				24			
	Width		Height		Width		Height		Width		Height	
	cm	inch	cm	inch	cm	inch	cm	inch	cm	inch	cm	inch
Pattern:	50	19.79	71	27.88	42	16.49	59	23.24	21	8.24	29	11.62
Including Margins:	66	26	87	34	58	23	75	30	37	15	45	18
	25				26				27			
	Width		Height		Width		Height		Width		Height	
	cm	inch	cm	inch	cm	inch	cm	inch	cm	inch	cm	inch
Pattern:	20	7.91	28	11.15	19	7.61	27	10.72	18	7.33	26	10.32
Including Margins:	36	14	44	18	35	14	43	17	34	14	42	17
	28				30				32			
	Width		Height		Width		Height		Width		Height	
	cm	inch	cm	inch	cm	inch	cm	inch	cm	inch	cm	inch
Pattern:	18	7.07	25	9.96	16	6.59	23	9.29	15	6.18	22	8.71
Including Margins:	34	14	41	16	32	13	39	16	31	13	38	15

Solid Color Stitches. Use two strands of the specified color for these stitches.		
Symbol	DMC	Name
•	1	White 1
☼	224	Shell Pink-VY LT
■	310	Black
／	353	Peach
☪	407	Desert Sand-DK
☛	413	Pewter Gray-DK
✱	414	Steel Gray-DK
✱	415	Pearl Gray
☛	451	Shell Gray-DK
☛	452	Shell Gray-MD
☛	453	Shell Gray-LT
◆	535	Ash Gray-VY LT
✱	543	Beige Brown-UL VY LT
☛	610	Drab Brown-DK
✱	640	Beige Gray-VY DK
♣	645	Beaver Gray-VY DK
✱	647	Beaver Gray-MD
♢	746	Off White
✱	758	Terra Cotta-VY LT
☛	762	Pearl Gray-VY LT
☛	778	Antique Mauve-VY LT
♀	819	Baby Pink-LT
●	838	Beige Brown-VY DK

↓	839	Beige Brown-DK
☛	842	Beige Brown-VY LT
☛	895	Hunter Green-VY DK
✱	909	Emerald Green-VY DK
☛	926	Gray Green-MD
☛	927	Gray Green-LT
☛	928	Gray Green-VY LT
↑	948	Peach-VY LT
★	950	Desert Sand-LT
☛	991	Aquamarine-DK
☛	3021	Brown Gray-VY DK
■	3031	Mocha Brown-VY DK
✱	3042	Antique Violet-LT
+	3064	Desert Sand
✱	3743	Antique Violet-VY LT
☛	3772	Desert Sand-VY DK
☛	3773	Desert Sand-MD
✱	3778	Terra Cotta-LT
☛	3781	Mocha Brown-DK
☛	3787	Brown Gray-DK
➔	3790	Beige Gray-UL DK
●	3799	Pewter Gray-VY DK
☛	3818	Emerald Green-UL VY DK
**	3861	Cocoa-LT
☛	3863	Mocha Beige-MD
☛	3864	Mocha Beige-LT

Blend Stitches. Use one strand of each of DMC1 and DMC2 for these stitches.				
Symbol	DMC1	Name1	DMC2	Name2
☛	758	Terra Cotta-VY LT	3773	Desert Sand-MD
✱	3773	Desert Sand-MD	3778	Terra Cotta-LT
☛	927	Gray Green-LT	414	Steel Gray-DK
♥	3799	Pewter Gray-VY DK	991	Aquamarine-DK
☪	1	White 1	819	Baby Pink-LT
↓	645	Beaver Gray-VY DK	451	Shell Gray-DK
↑	535	Ash Gray-VY LT	645	Beaver Gray-VY DK
▼	451	Shell Gray-DK	3861	Cocoa-LT
■	3861	Cocoa-LT	3864	Mocha Beige-LT
☛	3861	Cocoa-LT	3064	Desert Sand
▲	3863	Mocha Beige-MD	3861	Cocoa-LT
☛	3790	Beige Gray-UL DK	839	Beige Brown-DK
♠	3064	Desert Sand	356	Terra Cotta-MD
☛	758	Terra Cotta-VY LT	353	Peach
▲	3772	Desert Sand-VY DK	3778	Terra Cotta-LT
✱	3790	Beige Gray-UL DK	3772	Desert Sand-VY DK
☛	453	Shell Gray-LT	778	Antique Mauve-VY LT
☛	778	Antique Mauve-VY LT	543	Beige Brown-UL VY LT
✱	452	Shell Gray-MD	224	Shell Pink-VY LT
☛	647	Beaver Gray-MD	3861	Cocoa-LT
☛	224	Shell Pink-VY LT	842	Beige Brown-VY LT
☆	926	Gray Green-MD	645	Beaver Gray-VY DK
☛	895	Hunter Green-VY DK	3818	Emerald Green-UL VY DK

This table specifies how much thread of each color is required to stitch this pattern. It is good to know that one complete DMC skein contains 313 inches (795 cm) thread.

DMC	Name	Usage (cm)	Usage (inch)	Usage (cm)	Usage (inch)	Usage (cm)	Usage (inch)
		14		16		18	
1	White 1	200	78	190	74	171	67
224	Shell Pink-VY LT	245	96	233	91	210	82
310	Black	145	57	138	54	124	48
353	Peach	72	28	68	26	61	24
356	Terra Cotta-MD	4	1	4	1	3	1
407	Desert Sand-DK	66	25	63	24	57	22
413	Pewter Gray-DK	90	35	86	33	77	30
414	Steel Gray-DK	641	252	610	240	549	216
415	Pearl Gray	37	14	36	14	32	12
451	Shell Gray-DK	1368	538	1303	512	1173	461
452	Shell Gray-MD	605	238	576	226	518	203
453	Shell Gray-LT	74	29	71	27	63	24
535	Ash Gray-VY LT	239	94	227	89	205	80
543	Beige Brown-UL VY LT	80	31	76	29	69	27
610	Drab Brown-DK	10	3	10	3	9	3
640	Beige Gray-VY DK	347	136	331	130	298	117
645	Beaver Gray-VY DK	737	290	701	275	631	248
647	Beaver Gray-MD	229	90	218	85	196	77
746	Off White	60	23	57	22	52	20
758	Terra Cotta-VY LT	82	32	78	30	70	27
762	Pearl Gray-VY LT	39	15	37	14	34	13
778	Antique Mauve-VY LT	115	45	109	42	98	38
819	Baby Pink-LT	179	70	170	66	153	60
838	Beige Brown-VY DK	7	2	6	2	6	2
839	Beige Brown-DK	421	165	401	157	360	141
842	Beige Brown-VY LT	68	26	65	25	59	23
895	Hunter Green-VY DK	55	21	52	20	47	18
909	Emerald Green-VY DK	9	3	9	3	8	3
926	Gray Green-MD	271	106	258	101	232	91
927	Gray Green-LT	156	61	149	58	134	52
928	Gray Green-VY LT	45	17	43	16	39	15
948	Peach-VY LT	85	33	81	31	73	28
950	Desert Sand-LT	29	11	27	10	24	9
991	Aquamarine-DK	19	7	18	7	16	6
3021	Brown Gray-VY DK	123	48	117	46	105	41
3031	Mocha Brown-VY DK	64	25	61	24	54	21
3042	Antique Violet-LT	144	56	137	53	123	48
3064	Desert Sand	241	94	229	90	206	81
3743	Antique Violet-VY LT	64	25	61	24	55	21
3772	Desert Sand-VY DK	314	123	299	117	269	105
3773	Desert Sand-MD	122	48	116	45	105	41
3778	Terra Cotta-LT	41	16	39	15	35	13
3781	Mocha Brown-DK	7	2	6	2	6	2
3787	Brown Gray-DK	177	69	169	66	152	59
3790	Beige Gray-UL DK	824	324	785	309	706	277
3799	Pewter Gray-VY DK	134	52	128	50	115	45
3818	Emerald Green-UL VY DK	71	27	67	26	60	23
3861	Cocoa-LT	2611	1027	2486	978	2238	881
3863	Mocha Beige-MD	737	290	702	276	632	248
3864	Mocha Beige-LT	571	224	543	213	489	192

Extended thread usage table.

DMC	Name	Usage (cm)	Usage (inch)	Usage (cm)	Usage (inch)	Usage (cm)	Usage (inch)
		10		12		24	
1	White 1	308	121	257	101	128	50
224	Shell Pink-VY LT	378	148	315	123	158	62
310	Black	223	86	186	72	93	36
353	Peach	110	43	92	36	46	18
356	Terra Cotta-MD	5	2	5	2	2	1
407	Desert Sand-DK	103	40	86	33	43	17
413	Pewter Gray-DK	139	54	116	45	58	23
414	Steel Gray-DK	988	389	824	324	412	162
415	Pearl Gray	58	22	48	18	24	9
451	Shell Gray-DK	2111	830	1760	692	880	346
452	Shell Gray-MD	932	365	777	305	389	152
453	Shell Gray-LT	113	43	95	36	47	18
535	Ash Gray-VY LT	369	144	308	120	154	60
543	Beige Brown-UL VY LT	124	49	104	41	52	20
610	Drab Brown-DK	16	5	14	5	7	2
640	Beige Gray-VY DK	536	211	447	176	224	88
645	Beaver Gray-VY DK	1136	446	947	372	473	186
647	Beaver Gray-MD	353	139	294	116	147	58
746	Off White	94	36	78	30	39	15
758	Terra Cotta-VY LT	126	49	105	41	53	20
762	Pearl Gray-VY LT	61	23	51	20	26	10
778	Antique Mauve-VY LT	176	68	147	57	74	29
819	Baby Pink-LT	275	108	230	90	115	45
838	Beige Brown-VY DK	11	4	9	3	5	2
839	Beige Brown-DK	648	254	540	212	270	106
842	Beige Brown-VY LT	106	41	89	35	44	17
895	Hunter Green-VY DK	85	32	71	27	35	14
909	Emerald Green-VY DK	14	5	12	5	6	2
926	Gray Green-MD	418	164	348	137	174	68
927	Gray Green-LT	241	94	201	78	101	39
928	Gray Green-VY LT	70	27	59	23	29	11
948	Peach-VY LT	131	50	110	42	55	21
950	Desert Sand-LT	43	16	36	14	18	7
991	Aquamarine-DK	29	11	24	9	12	5
3021	Brown Gray-VY DK	189	74	158	62	79	31
3031	Mocha Brown-VY DK	97	38	81	32	41	16
3042	Antique Violet-LT	221	86	185	72	92	36
3064	Desert Sand	371	146	309	122	155	61
3743	Antique Violet-VY LT	99	38	83	32	41	16
3772	Desert Sand-VY DK	484	189	404	158	202	79
3773	Desert Sand-MD	189	74	158	62	79	31
3778	Terra Cotta-LT	63	23	53	20	26	10
3781	Mocha Brown-DK	11	4	9	3	5	2
3787	Brown Gray-DK	274	106	228	89	114	44
3790	Beige Gray-UL DK	1271	499	1059	416	530	208
3799	Pewter Gray-VY DK	207	81	173	68	86	34
3818	Emerald Green-UL VY DK	108	41	90	35	45	17
3861	Cocoa-LT	4028	1586	3357	1322	1679	661
3863	Mocha Beige-MD	1138	446	948	372	474	186
3864	Mocha Beige-LT	880	346	734	288	367	144



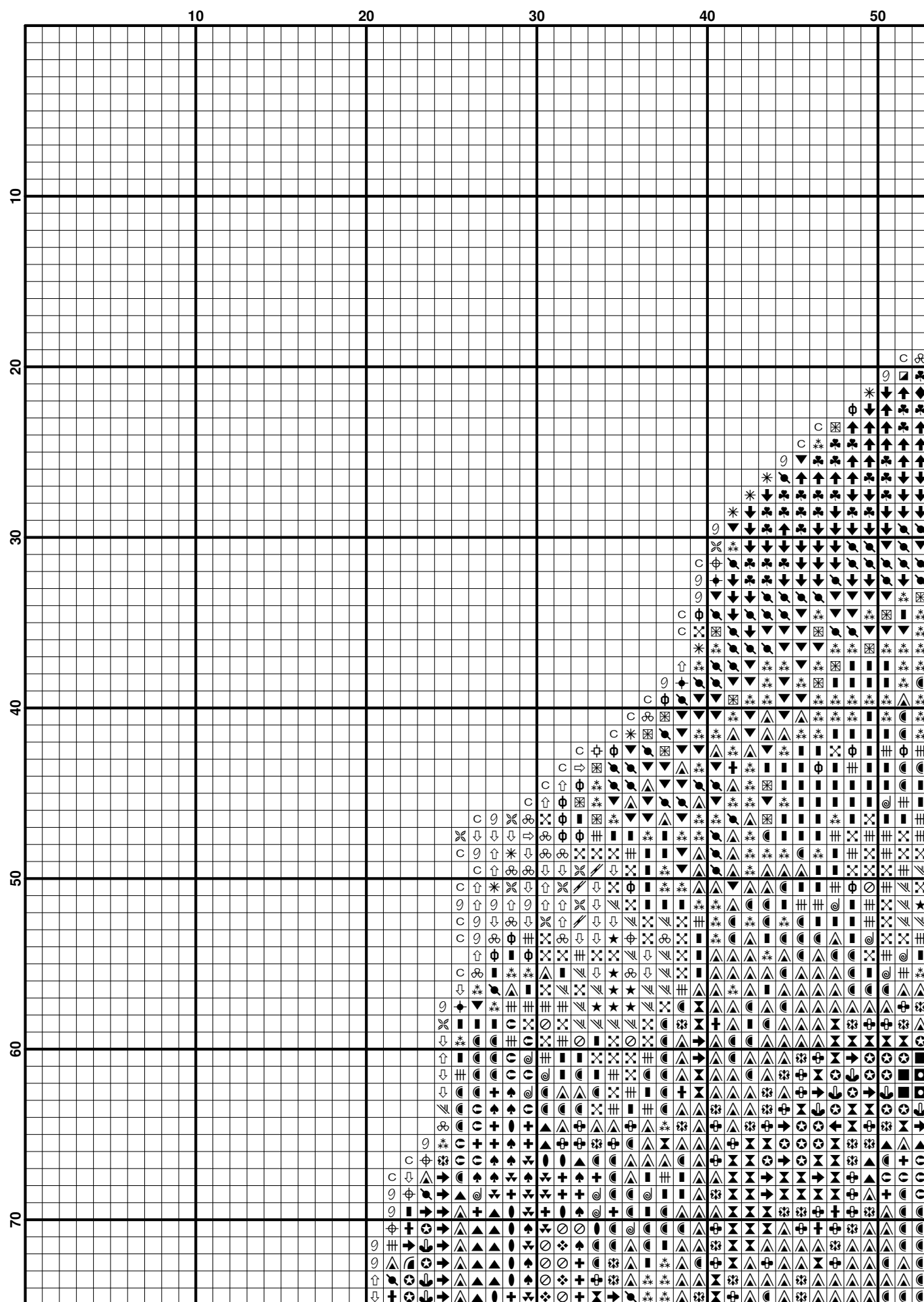
Extended thread usage table.

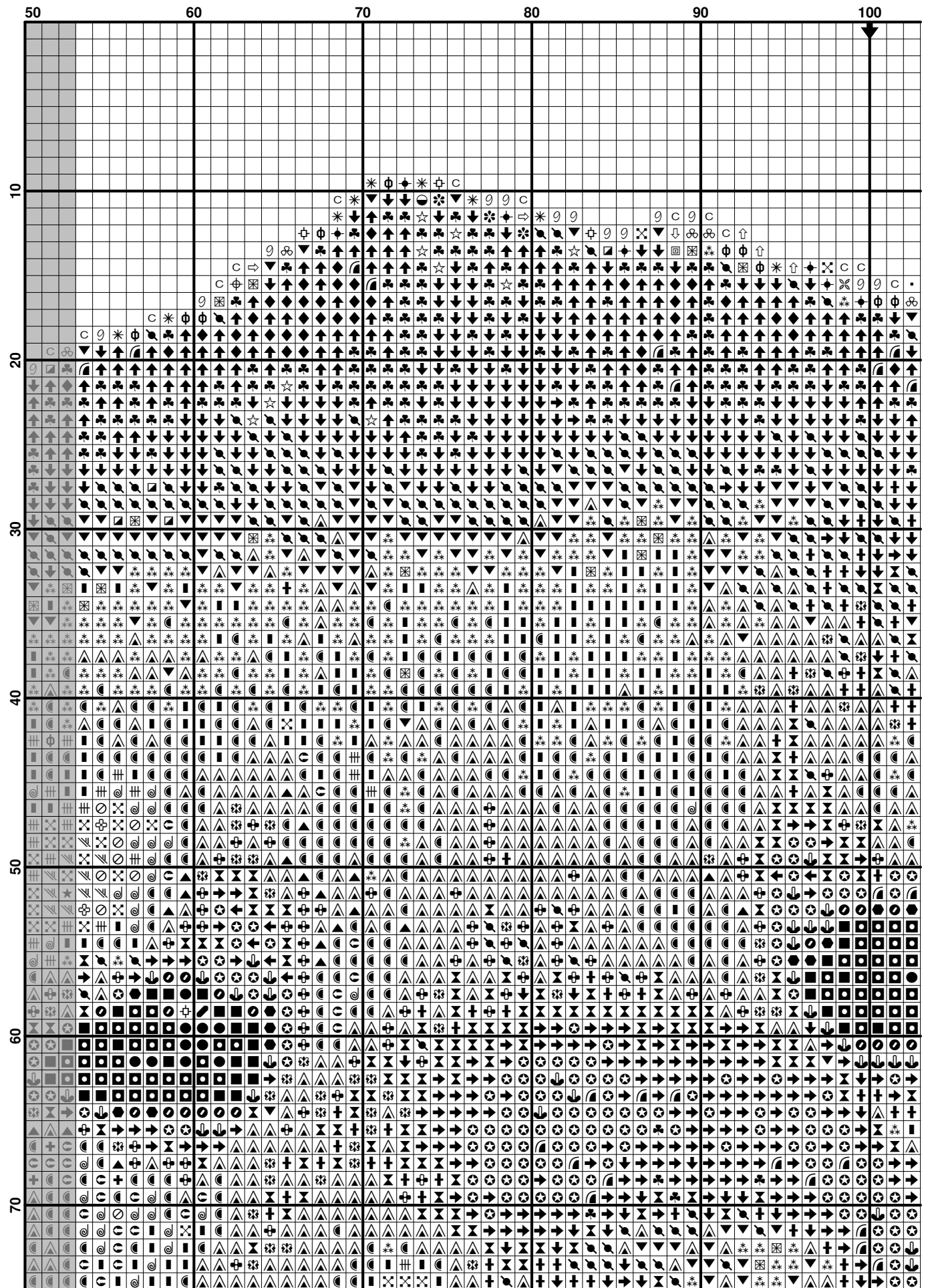
DMC	Name	Usage (cm)	Usage (inch)	Usage (cm)	Usage (inch)	Usage (cm)	Usage (inch)
		25		26		27	
1	White 1	123	48	118	46	114	45
224	Shell Pink-VY LT	151	59	145	57	140	55
310	Black	89	35	86	33	83	32
353	Peach	44	17	42	17	41	16
356	Terra Cotta-MD	2	1	2	1	2	1
407	Desert Sand-DK	41	16	39	15	38	15
413	Pewter Gray-DK	55	22	53	21	51	20
414	Steel Gray-DK	395	156	380	150	366	144
415	Pearl Gray	23	9	22	8	21	8
451	Shell Gray-DK	845	332	812	319	782	307
452	Shell Gray-MD	373	146	359	141	345	135
453	Shell Gray-LT	45	17	44	17	42	16
535	Ash Gray-VY LT	148	58	142	55	137	53
543	Beige Brown-UL VY LT	50	19	48	19	46	18
610	Drab Brown-DK	6	2	6	2	6	2
640	Beige Gray-VY DK	215	84	206	81	199	78
645	Beaver Gray-VY DK	454	179	437	172	421	165
647	Beaver Gray-MD	141	55	136	53	131	51
746	Off White	37	14	36	14	35	13
758	Terra Cotta-VY LT	50	19	48	19	47	18
762	Pearl Gray-VY LT	24	9	24	9	23	9
778	Antique Mauve-VY LT	71	27	68	26	65	25
819	Baby Pink-LT	110	43	106	42	102	40
838	Beige Brown-VY DK	4	1	4	1	4	1
839	Beige Brown-DK	259	102	249	98	240	94
842	Beige Brown-VY LT	42	17	41	16	39	15
895	Hunter Green-VY DK	34	13	33	12	31	12
909	Emerald Green-VY DK	6	2	6	2	5	2
926	Gray Green-MD	167	66	161	63	155	61
927	Gray Green-LT	96	37	93	36	89	35
928	Gray Green-VY LT	28	11	27	10	26	10
948	Peach-VY LT	53	20	51	19	49	19
950	Desert Sand-LT	17	6	17	6	16	6
991	Aquamarine-DK	12	4	11	4	11	4
3021	Brown Gray-VY DK	76	30	73	28	70	27
3031	Mocha Brown-VY DK	39	15	37	15	36	14
3042	Antique Violet-LT	89	35	85	33	82	32
3064	Desert Sand	148	58	143	56	137	54
3743	Antique Violet-VY LT	40	15	38	15	37	14
3772	Desert Sand-VY DK	194	76	186	73	179	70
3773	Desert Sand-MD	76	30	73	28	70	27
3778	Terra Cotta-LT	25	9	24	9	23	9
3781	Mocha Brown-DK	4	1	4	1	4	1
3787	Brown Gray-DK	109	42	105	41	101	39
3790	Beige Gray-UL DK	508	199	489	192	471	185
3799	Pewter Gray-VY DK	83	32	80	31	77	30
3818	Emerald Green-UL VY DK	43	17	42	16	40	15
3861	Cocoa-LT	1611	634	1549	610	1492	587
3863	Mocha Beige-MD	455	179	438	172	421	165
3864	Mocha Beige-LT	352	138	339	133	326	128

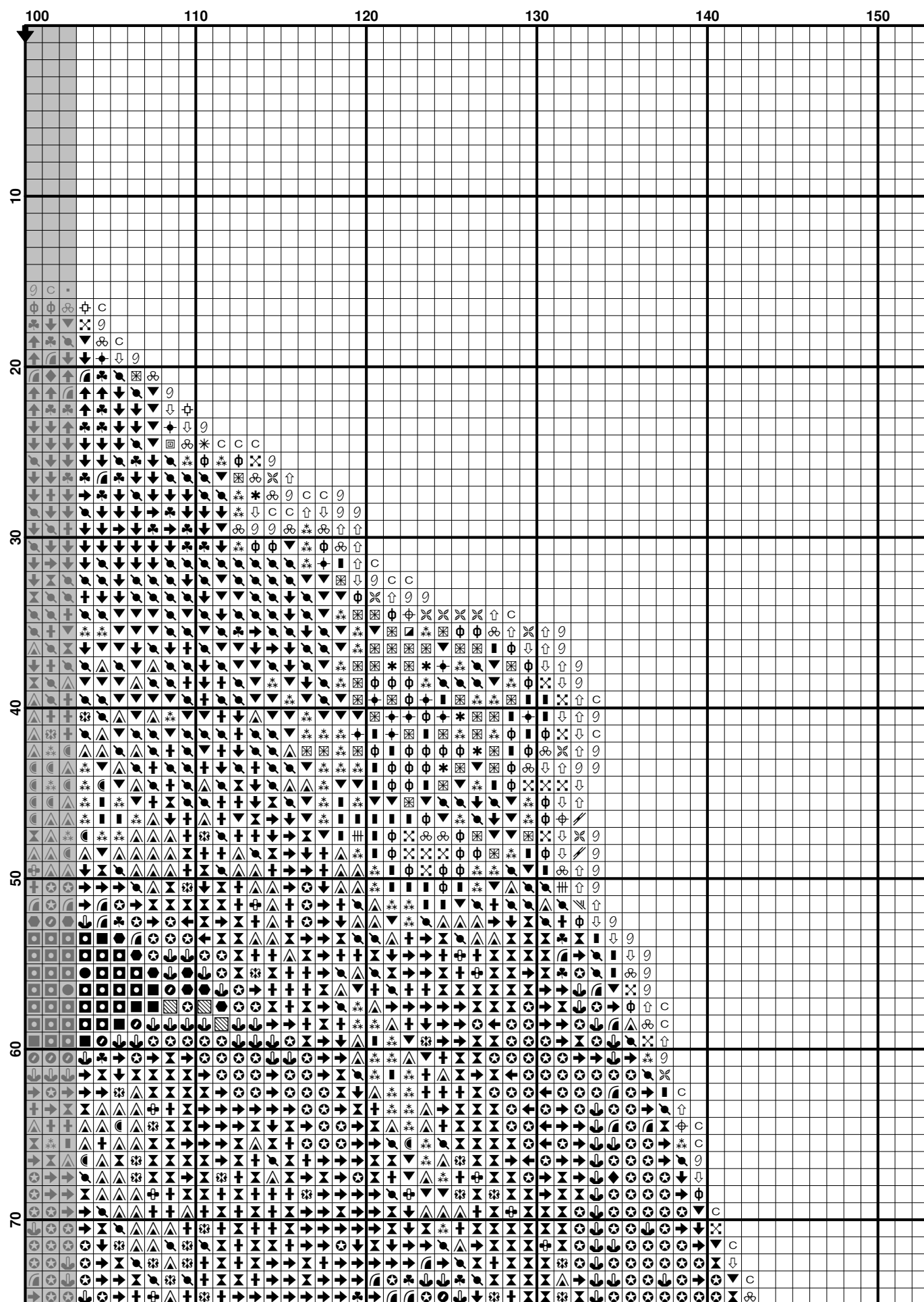
Extended thread usage table.

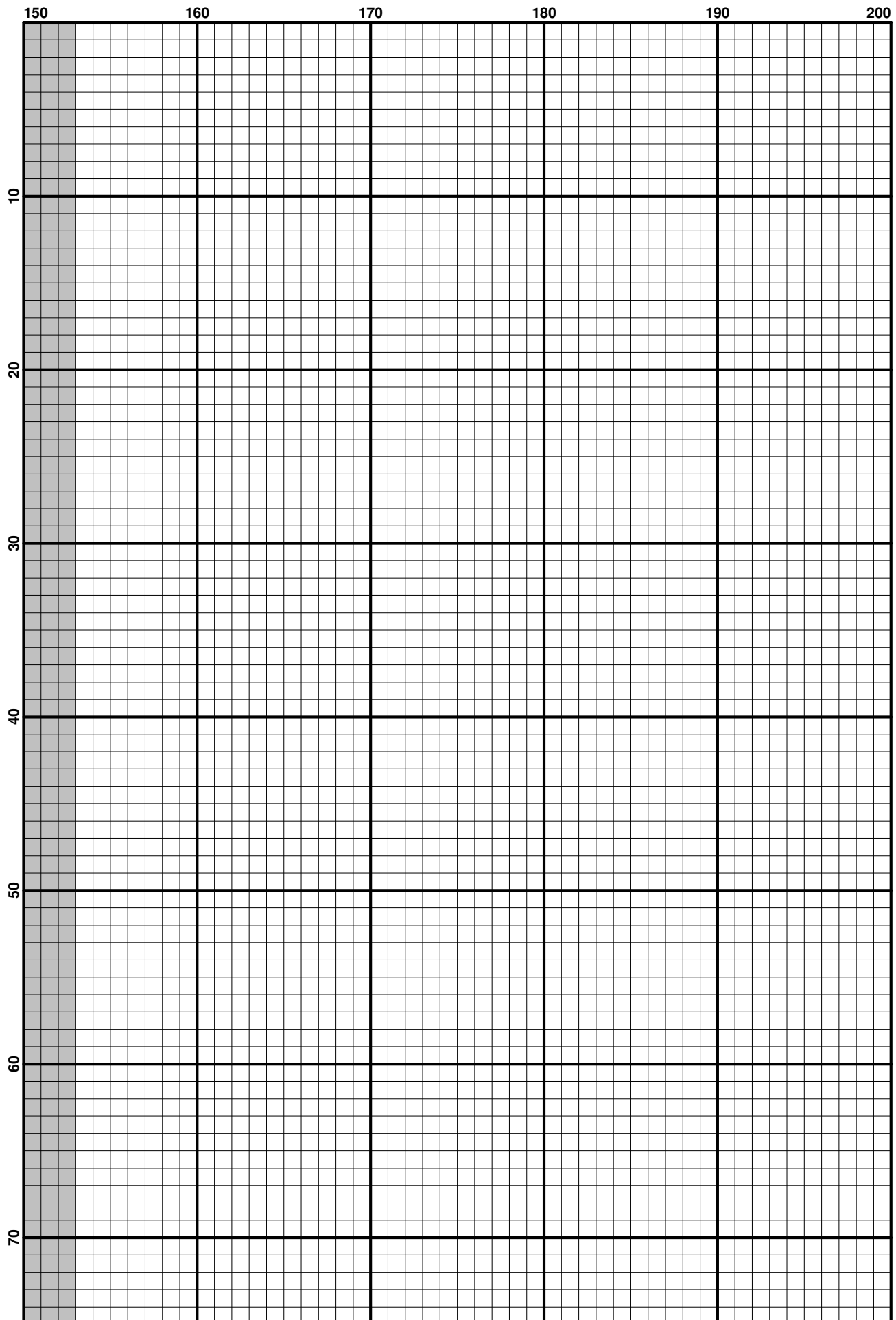
DMC	Name	Usage (cm)	Usage (inch)	Usage (cm)	Usage (inch)	Usage (cm)	Usage (inch)
		28		30		32	
1	White 1	110	43	103	40	96	38
224	Shell Pink-VY LT	135	53	126	49	118	46
310	Black	80	31	74	29	70	27
353	Peach	39	15	37	14	34	14
356	Terra Cotta-MD	2	1	2	1	2	1
407	Desert Sand-DK	37	14	34	13	32	12
413	Pewter Gray-DK	50	19	46	18	43	17
414	Steel Gray-DK	353	139	329	130	309	122
415	Pearl Gray	21	8	19	7	18	7
451	Shell Gray-DK	754	296	704	277	660	259
452	Shell Gray-MD	333	131	311	122	291	114
453	Shell Gray-LT	41	15	38	14	35	14
535	Ash Gray-VY LT	132	51	123	48	115	45
543	Beige Brown-UL VY LT	44	17	41	16	39	15
610	Drab Brown-DK	6	2	5	2	5	2
640	Beige Gray-VY DK	192	75	179	70	168	66
645	Beaver Gray-VY DK	406	159	379	149	355	140
647	Beaver Gray-MD	126	50	118	46	110	43
746	Off White	33	13	31	12	29	11
758	Terra Cotta-VY LT	45	17	42	16	39	15
762	Pearl Gray-VY LT	22	8	20	8	19	7
778	Antique Mauve-VY LT	63	24	59	23	55	21
819	Baby Pink-LT	98	39	92	36	86	34
838	Beige Brown-VY DK	4	1	4	1	3	1
839	Beige Brown-DK	231	91	216	85	203	79
842	Beige Brown-VY LT	38	15	35	14	33	13
895	Hunter Green-VY DK	30	12	28	11	26	10
909	Emerald Green-VY DK	5	2	5	2	5	2
926	Gray Green-MD	149	59	139	55	131	51
927	Gray Green-LT	86	33	80	31	75	29
928	Gray Green-VY LT	25	10	23	9	22	8
948	Peach-VY LT	47	18	44	17	41	16
950	Desert Sand-LT	15	6	14	5	14	5
991	Aquamarine-DK	10	4	10	4	9	3
3021	Brown Gray-VY DK	68	26	63	25	59	23
3031	Mocha Brown-VY DK	35	14	32	13	30	12
3042	Antique Violet-LT	79	31	74	29	69	27
3064	Desert Sand	132	52	124	49	116	46
3743	Antique Violet-VY LT	35	14	33	13	31	12
3772	Desert Sand-VY DK	173	68	161	63	151	59
3773	Desert Sand-MD	68	26	63	25	59	23
3778	Terra Cotta-LT	23	8	21	8	20	7
3781	Mocha Brown-DK	4	1	4	1	3	1
3787	Brown Gray-DK	98	38	91	35	86	33
3790	Beige Gray-UL DK	454	178	424	166	397	156
3799	Pewter Gray-VY DK	74	29	69	27	65	25
3818	Emerald Green-UL VY DK	39	15	36	14	34	13
3861	Cocoa-LT	1439	566	1343	529	1259	496
3863	Mocha Beige-MD	406	159	379	149	356	140
3864	Mocha Beige-LT	314	123	293	115	275	108

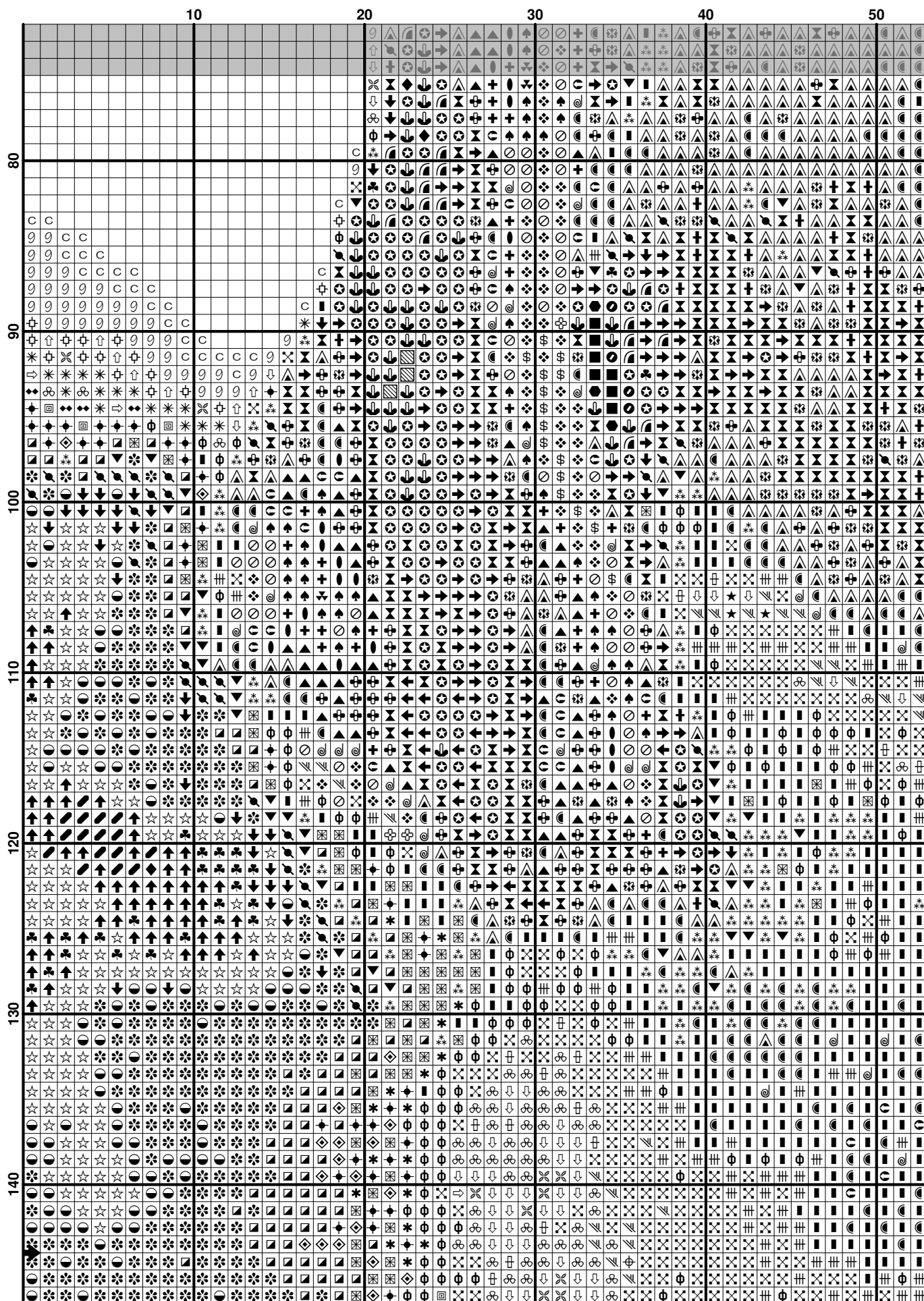


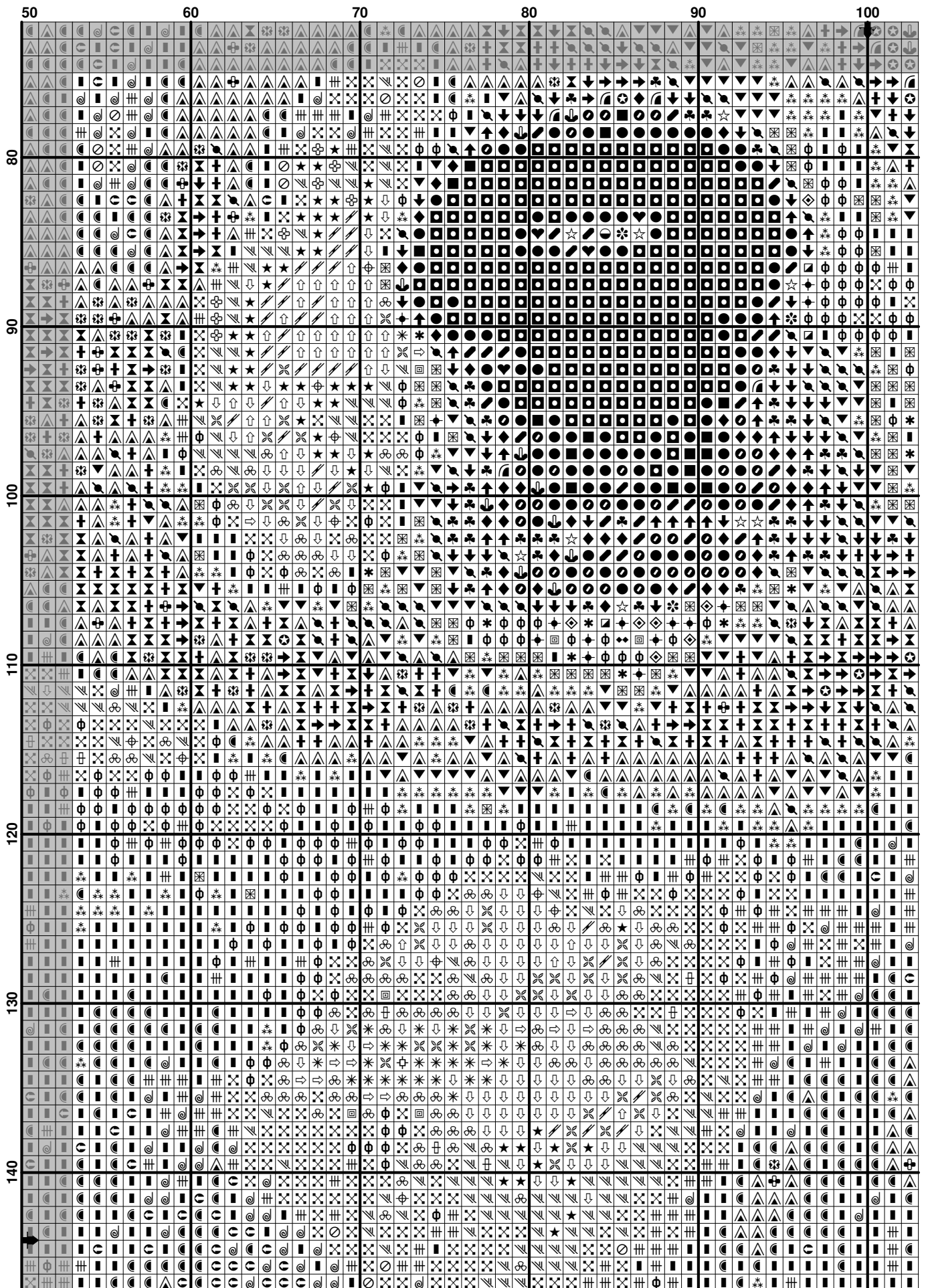












[illegible]



