

669 The Arts - Music



This pattern may not be copied, sold or in any other way handled in any way that violates the international copyright laws. If you get hold of this pattern (and or this document) in any other way than via a direct download from www.goldenkite.com or via a mail from us, you should report that to us at legal_actions@goldenkite.com .

Copyright (c) 2004-, Golden Kite. All rights reserved.

Instructions

Thank you for choosing Golden Kite products!
We hope you will have lots of fun with this cross-stitch pattern!

Fabric

Press the fabric with an iron if needed. A good thing to prevent the fabric from fraying is to machine zigzag the edges.

On large patterns, it is easiest to start from the upper left corner of the design. Make sure you have the proper margins before starting and that the fabric piece is of the correct size. The best way to verify this is to count all stitch positions on the fabric from the upper left corner downwards and to the right to make sure there is enough space for the design.

Some prefer to start in the center of the design instead. To locate the center of the fabric, fold the fabric in half both vertically and horizontally. The center is located where these two folds meet.

Stitches

Each length of DMC tread consists of six strands.

Use two of these strands for all stitches.

Note that some colors may be mixes (or blends) between two different pure colors. In that case take one strand of the two colors each and thread the two strands into the needle at the same time for stitching.

All stitches are full cross-stitches. No half-stitching and no back-stitching is necessary in this pattern.

All cross-stitches will be worked into the holes in the fabric from left to right. Always use the larger holes in the fabric for the stitches. Adjacent stitches should meet in the same hole. Make sure all stitches cross in the same direction.

Please be careful when washing the finished embroidery! The cotton thread may bleed when washed. Only hand wash it in lukewarm water. Remove excess water by roll it in a towel and lay it flat to air dry. Natural fabrics may shrink slightly when washed. We do not recommend washing the embroidery if not absolutely necessary and we take no responsibility for any damage that may occur.

When you start using this product you agree that Golden Kite (Golden K), or any people working for or in association with Golden Kite (Golden K), cannot be set responsible for any physical, mental, economical or other type of damage caused by this product (including this document, pattern, threads, needles and any other parts received by you from Golden Kite (Golden K)).

This pattern may not be copied, sold or in any other way handled in any way that violates the international copyright laws. If you get hold of this pattern (and or this document) in any other way than via a direct download from www.goldenkite.com or via a mail from us, you should report that to us at legal_actions@goldenkite.com .

The Arts - Music

Stitch Count	
Horizontal:	300
Vertical:	477

Recommended Fabric Color
Antique White

This table tells the size of the pattern (without any margins) and the size of the fabric required to stitch the pattern (including recommended margins). 3 inch margins have been added on each side in the 'Including Margins' row.

The sizes are given for 14, 16 and 18 stitches per inch fabrics.

Make sure to use the 'Including Margins' row when cutting the piece of fabric to be used. Also make sure that 3 inch margins are enough for your stitching technique and add more margin areas if necessary.

	14				16				18			
	Width		Height		Width		Height		Width		Height	
	cm	inch	cm	inch	cm	inch	cm	inch	cm	inch	cm	inch
Pattern:	55	21.37	87	34.07	48	18.7	76	29.81	43	16.625	68	26.5
Including Margins:	71	28	103	41	64	25	92	36	59	23	84	33
	10				12				24			
	Width		Height		Width		Height		Width		Height	
	cm	inch	cm	inch	cm	inch	cm	inch	cm	inch	cm	inch
Pattern:	77	29.91	121	47.69	64	24.93	101	39.74	32	12.46	50	19.87
Including Margins:	93	36	137	54	80	31	117	46	48	19	66	26
	25				26				27			
	Width		Height		Width		Height		Width		Height	
	cm	inch	cm	inch	cm	inch	cm	inch	cm	inch	cm	inch
Pattern:	30	11.96	48	19.07	29	11.5	46	18.34	28	11.08	45	17.66
Including Margins:	46	18	64	26	45	18	62	25	44	18	61	24
	28				30				32			
	Width		Height		Width		Height		Width		Height	
	cm	inch	cm	inch	cm	inch	cm	inch	cm	inch	cm	inch
Pattern:	27	10.68	43	17.03	25	9.97	40	15.89	24	9.34	38	14.9
Including Margins:	43	17	59	24	41	16	56	22	40	16	54	21

Solid Color Stitches. Use two strands of the specified color for these stitches.		
Symbol	DMC	Name
	223	Shell Pink-LT
	317	Pewter Gray
	372	Mustard-LT
	407	Desert Sand-DK
	413	Pewter Gray-DK
	414	Steel Gray-DK
	415	Pearl Gray
	452	Shell Gray-MD
	501	Blue Green-DK
	503	Blue Green-MD
	524	Fern Green-VY LT
	535	Ash Gray-VY LT
	543	Beige Brown-UL VY LT
	640	Beige Gray-VY DK
	642	Beige Gray-DK
	645	Beaver Gray-VY DK
	646	Beaver Gray-DK
	647	Beaver Gray-MD
	648	Beaver Gray-LT
	712	Cream
	738	Tan-VY LT
	739	Tan-UL VY LT
	758	Terra Cotta-VY LT
	813	Blue-LT

	844	Beaver Brown-UL DK
	926	Gray Green-MD
	927	Gray Green-LT
	928	Gray Green-VY LT
	931	Antique Blue-MD
	932	Antique Blue-LT
	948	Peach-VY LT
	950	Desert Sand-LT
	3021	Brown Gray-VY DK
	3024	Brown Gray-VY LT
	3032	Mocha Brown-MD
	3047	Yellow Beige-LT
	3051	Green Gray-DK
	3072	Beaver Gray-VY LT
	3753	Antique Blue-UL VY LT
	3756	Baby Blue-UL VY LT
	3768	Gray Green-DK
	3772	Desert Sand-VY DK
	3778	Terra Cotta-LT
	3787	Brown Gray-DK
	3790	Beige Gray-UL DK
	3859	Rosewood-LT
	3861	Cocoa-LT
	3864	Mocha Beige-LT
	3865	Winter White
	3866	Mocha Brown-UL VY LT

Blend Stitches. Use one strand of each of DMC1 and DMC2 for these stitches.

Symbol	DMC1	Name1	DMC2	Name2
)	3865	Winter White	3756	Baby Blue-UL VY LT
▲	931	Antique Blue-MD	932	Antique Blue-LT
←	645	Beaver Gray-VY DK	646	Beaver Gray-DK
†	414	Steel Gray-DK	503	Blue Green-MD
✕	932	Antique Blue-LT	415	Pearl Gray
●	926	Gray Green-MD	3768	Gray Green-DK
‡	738	Tan-VY LT	758	Terra Cotta-VY LT
★	738	Tan-VY LT	739	Tan-UL VY LT
✕	645	Beaver Gray-VY DK	535	Ash Gray-VY LT
▼	407	Desert Sand-DK	223	Shell Pink-LT
↑	3772	Desert Sand-VY DK	3790	Beige Gray-UL DK
■	3051	Green Gray-DK	3021	Brown Gray-VY DK
›	3866	Mocha Brown-UL VY LT	712	Cream
○	3787	Brown Gray-DK	844	Beaver Brown-UL DK
☿	3861	Cocoa-LT	407	Desert Sand-DK
♠	927	Gray Green-LT	932	Antique Blue-LT
↔	3072	Beaver Gray-VY LT	415	Pearl Gray
✦	3778	Terra Cotta-LT	758	Terra Cotta-VY LT
♠	3778	Terra Cotta-LT	3859	Rosewood-LT
⊕	931	Antique Blue-MD	3768	Gray Green-DK
／	948	Peach-VY LT	758	Terra Cotta-VY LT
✕	642	Beige Gray-DK	3772	Desert Sand-VY DK
⊙	501	Blue Green-DK	3021	Brown Gray-VY DK
⊕	3778	Terra Cotta-LT	738	Tan-VY LT
☐	3864	Mocha Beige-LT	758	Terra Cotta-VY LT
⌘	739	Tan-UL VY LT	758	Terra Cotta-VY LT
⊕	813	Blue-LT	3753	Antique Blue-UL VY LT
◇	3756	Baby Blue-UL VY LT	3753	Antique Blue-UL VY LT
✕	813	Blue-LT	931	Antique Blue-MD
⊙	3072	Beaver Gray-VY LT	3756	Baby Blue-UL VY LT
Ⓟ	712	Cream	3756	Baby Blue-UL VY LT

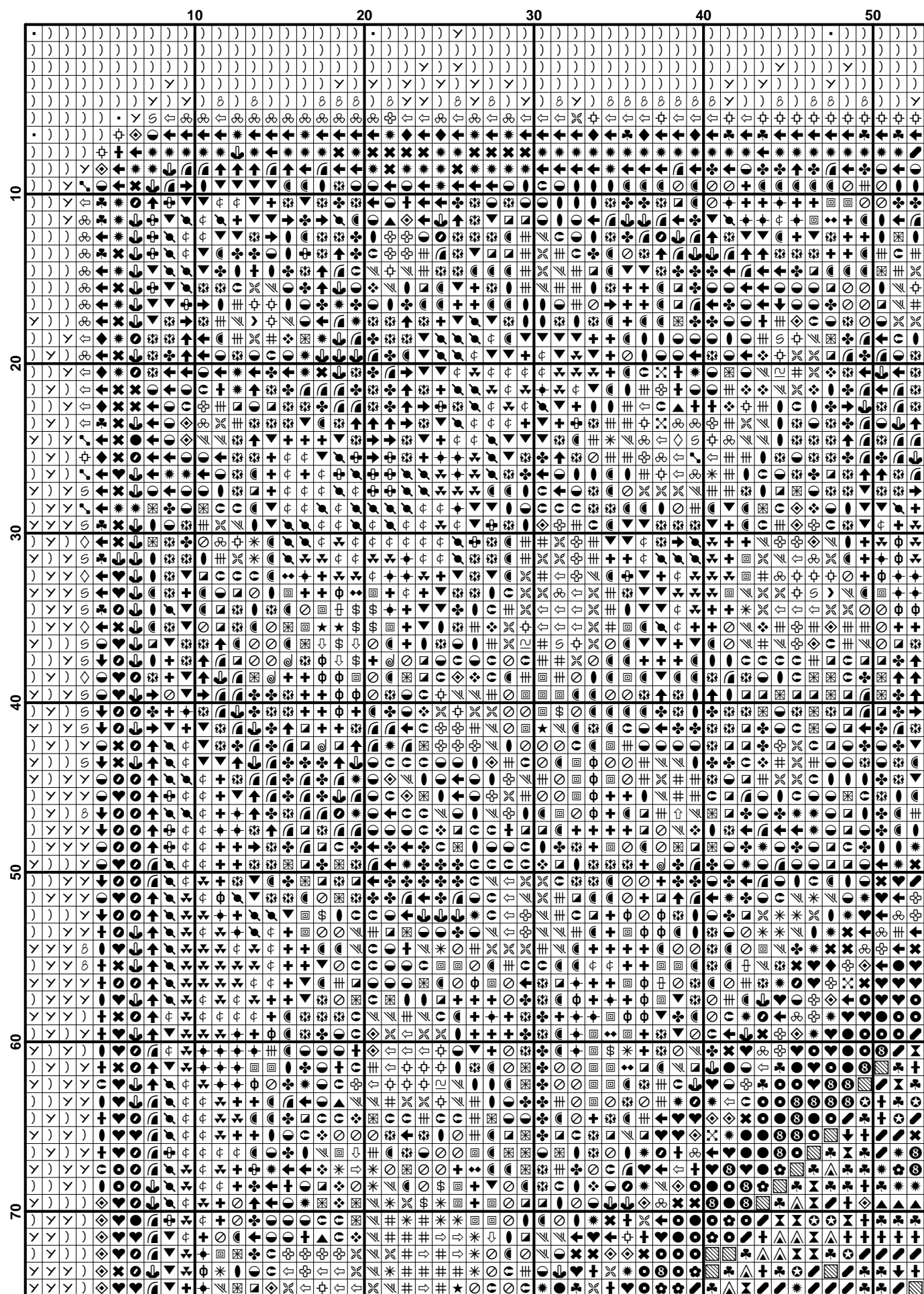
This table specifies how much thread of each color is required to stitch this pattern. It is good to know that one complete DMC skein contains 313 inches (795 cm) thread.

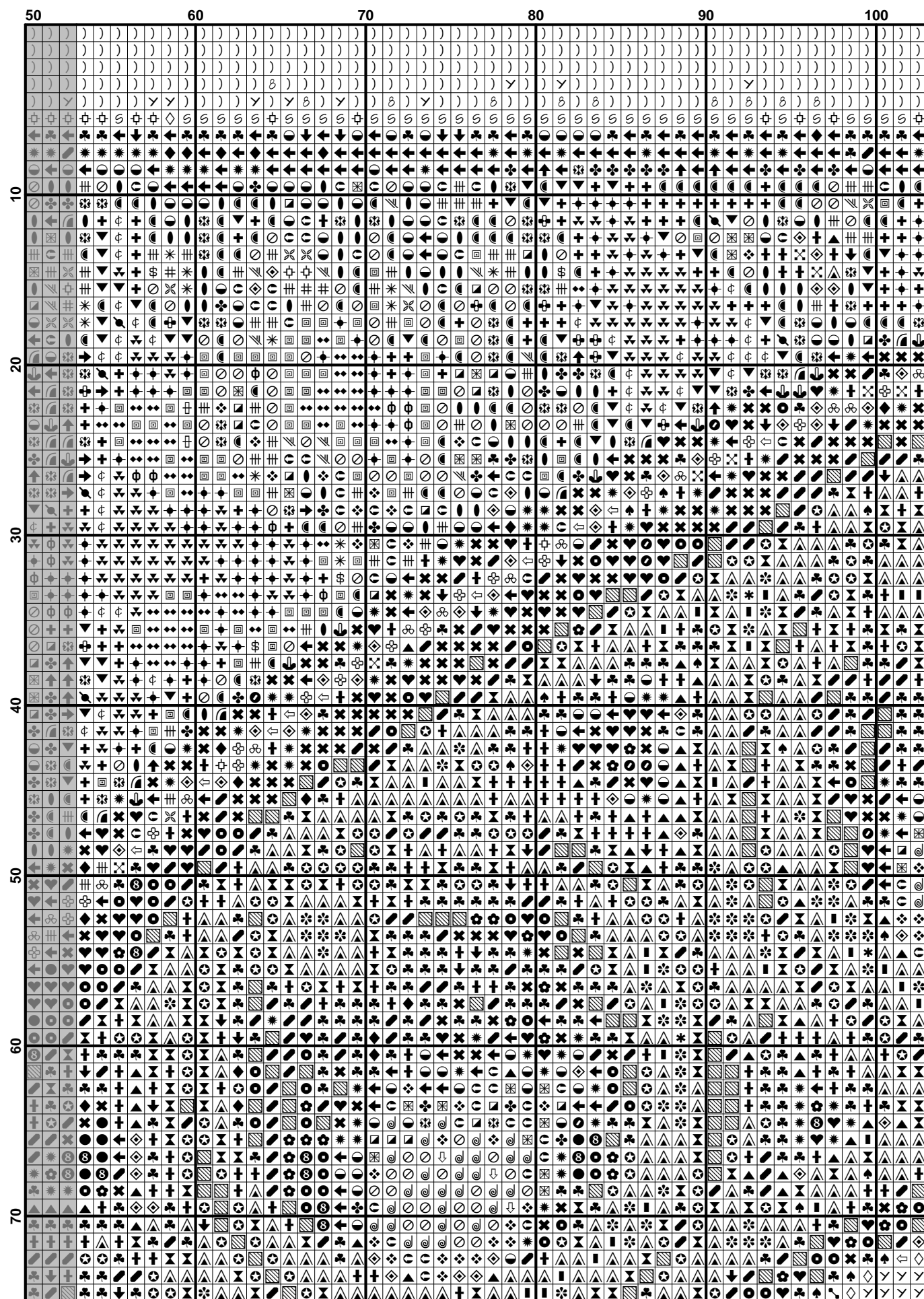
DMC	Name	Usage (cm)	Usage (inch)	Usage (cm)	Usage (inch)	Usage (cm)	Usage (inch)
		14		16		18	
223	Shell Pink-LT	121	47	115	45	103	40
317	Pewter Gray	49	19	47	18	42	16
372	Mustard-LT	149	58	142	55	128	50
407	Desert Sand-DK	566	222	539	212	485	190
413	Pewter Gray-DK	142	55	136	53	122	48
414	Steel Gray-DK	475	187	452	177	407	160
415	Pearl Gray	1040	409	991	390	892	351
452	Shell Gray-MD	219	86	209	82	188	74
501	Blue Green-DK	281	110	268	105	241	94
503	Blue Green-MD	618	243	589	231	530	208
524	Fern Green-VY LT	333	131	317	124	285	112
535	Ash Gray-VY LT	403	158	384	151	345	135
543	Beige Brown-UL VY LT	226	88	215	84	194	76
640	Beige Gray-VY DK	614	241	585	230	526	207
642	Beige Gray-DK	425	167	405	159	364	143
645	Beaver Gray-VY DK	1167	459	1111	437	1000	393
646	Beaver Gray-DK	867	341	826	325	743	292
647	Beaver Gray-MD	510	200	486	191	437	172
648	Beaver Gray-LT	512	201	488	192	439	172
712	Cream	2020	795	1924	757	1731	681
738	Tan-VY LT	558	219	531	209	478	188
739	Tan-UL VY LT	801	315	763	300	687	270
758	Terra Cotta-VY LT	491	193	468	184	421	165
813	Blue-LT	221	87	211	83	190	74
844	Beaver Brown-UL DK	620	244	590	232	531	209
926	Gray Green-MD	859	338	818	322	736	289
927	Gray Green-LT	931	366	887	349	798	314
928	Gray Green-VY LT	732	288	697	274	627	246
931	Antique Blue-MD	893	351	850	334	765	301
932	Antique Blue-LT	832	327	792	311	713	280
948	Peach-VY LT	44	17	42	16	37	14
950	Desert Sand-LT	88	34	84	33	75	29
3021	Brown Gray-VY DK	727	286	692	272	623	245
3024	Brown Gray-VY LT	623	245	593	233	534	210
3032	Mocha Brown-MD	233	91	222	87	200	78
3047	Yellow Beige-LT	119	46	113	44	102	40
3051	Green Gray-DK	367	144	349	137	314	123
3072	Beaver Gray-VY LT	2352	925	2240	881	2016	793
3753	Antique Blue-UL VY LT	665	261	633	249	570	224
3756	Baby Blue-UL VY LT	7544	2970	7185	2828	6466	2545
3768	Gray Green-DK	605	238	577	227	519	204
3772	Desert Sand-VY DK	341	134	325	127	292	114
3778	Terra Cotta-LT	262	103	249	98	224	88
3787	Brown Gray-DK	997	392	949	373	854	336
3790	Beige Gray-UL DK	342	134	326	128	293	115
3859	Rosewood-LT	80	31	76	29	68	26
3861	Cocoa-LT	349	137	332	130	299	117
3864	Mocha Beige-LT	459	180	437	172	393	154
3865	Winter White	5416	2132	5158	2030	4643	1827
3866	Mocha Brown-UL VY LT	1071	421	1020	401	918	361

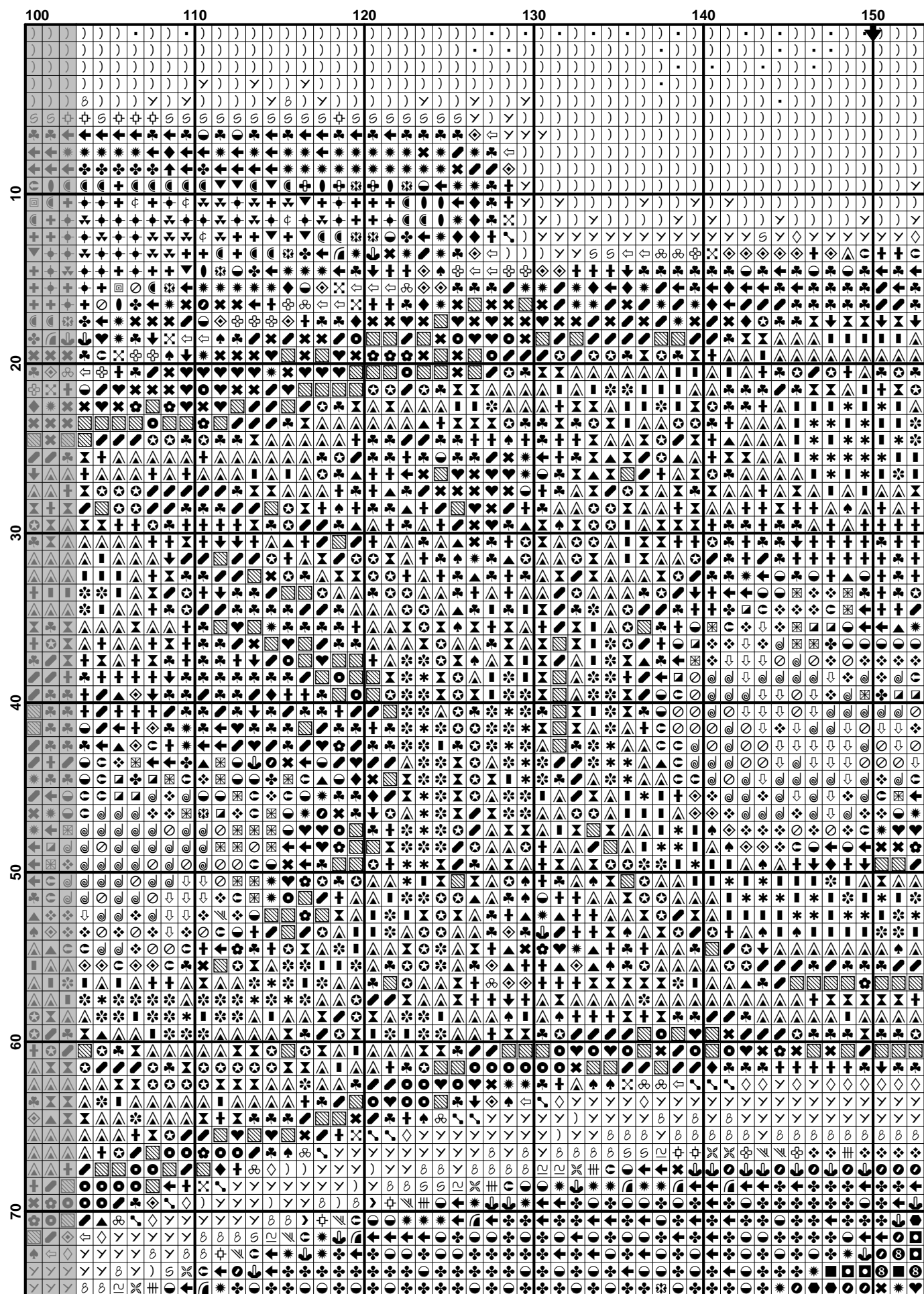
Extended thread usage table.							
DMC	Name	Usage (cm)	Usage (inch)	Usage (cm)	Usage (inch)	Usage (cm)	Usage (inch)
		10		12		24	
223	Shell Pink-LT	185	72	155	60	77	30
317	Pewter Gray	76	29	63	24	32	12
372	Mustard-LT	230	90	192	75	96	38
407	Desert Sand-DK	873	342	728	285	364	143
413	Pewter Gray-DK	220	86	183	72	92	36
414	Steel Gray-DK	733	288	611	240	305	120
415	Pearl Gray	1606	632	1338	527	669	263
452	Shell Gray-MD	338	133	282	111	141	56
501	Blue Green-DK	434	169	362	141	181	71
503	Blue Green-MD	954	374	795	312	398	156
524	Fern Green-VY LT	513	202	428	168	214	84
535	Ash Gray-VY LT	621	243	518	203	259	101
543	Beige Brown-UL VY LT	349	137	291	114	146	57
640	Beige Gray-VY DK	947	373	789	311	395	155
642	Beige Gray-DK	655	257	546	215	273	107
645	Beaver Gray-VY DK	1800	707	1500	590	750	295
646	Beaver Gray-DK	1337	526	1115	438	557	219
647	Beaver Gray-MD	787	310	656	258	328	129
648	Beaver Gray-LT	790	310	659	258	329	129
712	Cream	3116	1226	2597	1022	1298	511
738	Tan-VY LT	860	338	717	282	359	141
739	Tan-UL VY LT	1237	486	1031	405	515	203
758	Terra Cotta-VY LT	758	297	632	248	316	124
813	Blue-LT	342	133	285	111	143	56
844	Beaver Brown-UL DK	956	376	797	314	398	157
926	Gray Green-MD	1325	520	1104	434	552	217
927	Gray Green-LT	1436	565	1197	471	599	236
928	Gray Green-VY LT	1129	443	941	369	470	185
931	Antique Blue-MD	1377	542	1148	452	574	226
932	Antique Blue-LT	1283	504	1070	420	535	210
948	Peach-VY LT	67	25	56	21	28	11
950	Desert Sand-LT	135	52	113	44	56	22
3021	Brown Gray-VY DK	1121	441	935	368	467	184
3024	Brown Gray-VY LT	961	378	801	315	401	158
3032	Mocha Brown-MD	360	140	300	117	150	59
3047	Yellow Beige-LT	184	72	153	60	77	30
3051	Green Gray-DK	565	221	471	185	236	92
3072	Beaver Gray-VY LT	3629	1427	3024	1190	1512	595
3753	Antique Blue-UL VY LT	1026	403	855	336	428	168
3756	Baby Blue-UL VY LT	11639	4581	9699	3818	4850	1909
3768	Gray Green-DK	934	367	779	306	389	153
3772	Desert Sand-VY DK	526	205	438	171	219	86
3778	Terra Cotta-LT	403	158	336	132	168	66
3787	Brown Gray-DK	1537	605	1281	504	641	252
3790	Beige Gray-UL DK	527	207	440	173	220	86
3859	Rosewood-LT	122	47	102	39	51	20
3861	Cocoa-LT	538	211	449	176	224	88
3864	Mocha Beige-LT	707	277	590	231	295	116
3865	Winter White	8357	3289	6965	2741	3482	1370
3866	Mocha Brown-UL VY LT	1652	650	1377	542	689	271

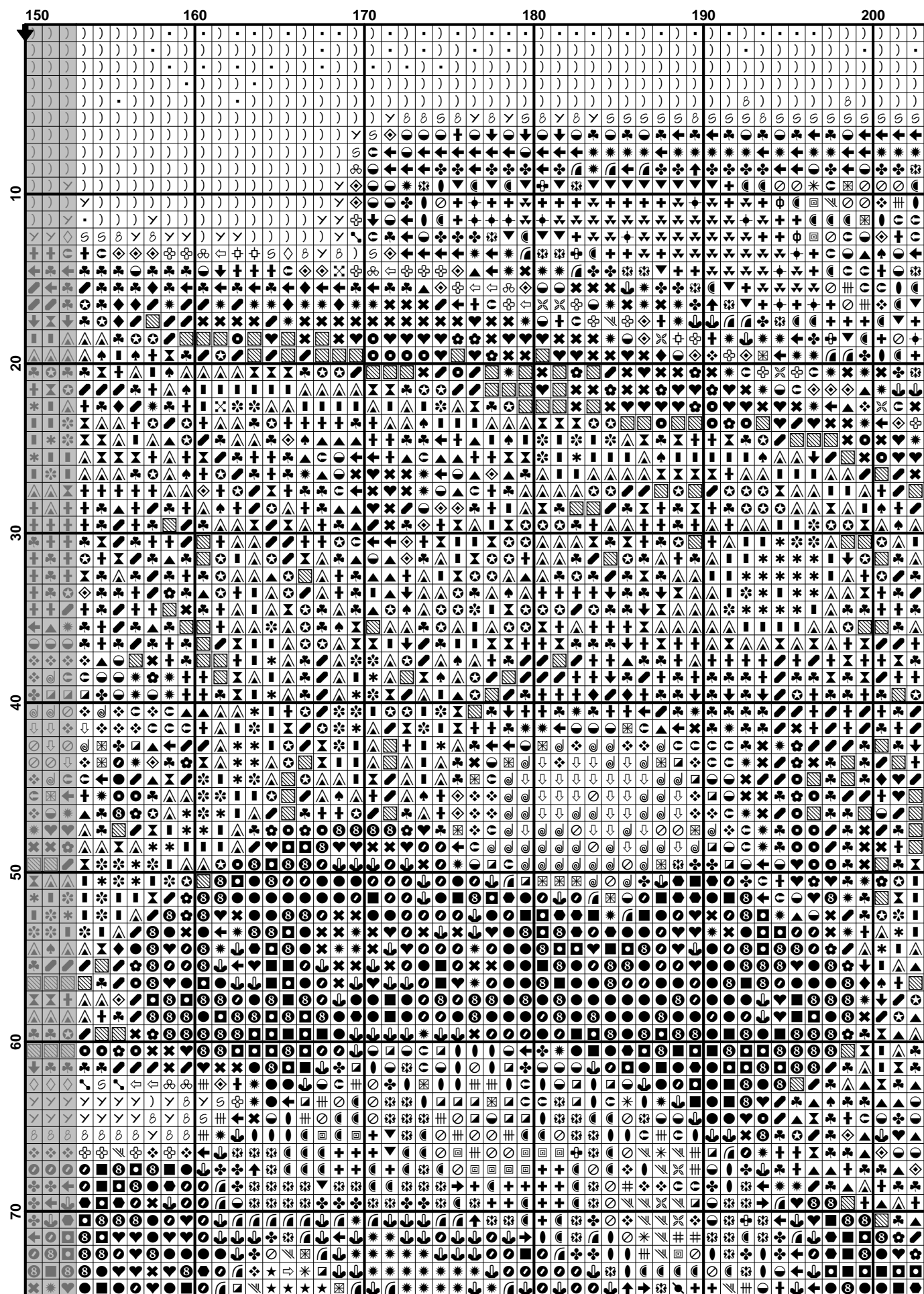
Extended thread usage table.							
DMC	Name	Usage (cm)	Usage (inch)	Usage (cm)	Usage (inch)	Usage (cm)	Usage (inch)
		25		26		27	
223	Shell Pink-LT	74	29	71	28	69	27
317	Pewter Gray	30	12	29	11	28	11
372	Mustard-LT	92	36	89	35	85	33
407	Desert Sand-DK	349	137	336	132	323	127
413	Pewter Gray-DK	88	35	84	33	81	32
414	Steel Gray-DK	293	115	282	111	271	107
415	Pearl Gray	642	253	618	243	595	234
452	Shell Gray-MD	135	53	130	51	125	49
501	Blue Green-DK	174	68	167	65	161	63
503	Blue Green-MD	382	150	367	144	353	139
524	Fern Green-VY LT	205	81	197	78	190	75
535	Ash Gray-VY LT	248	97	239	93	230	90
543	Beige Brown-UL VY LT	140	55	134	53	129	51
640	Beige Gray-VY DK	379	149	364	143	351	138
642	Beige Gray-DK	262	103	252	99	243	95
645	Beaver Gray-VY DK	720	283	692	272	667	262
646	Beaver Gray-DK	535	210	514	202	495	195
647	Beaver Gray-MD	315	124	303	119	291	115
648	Beaver Gray-LT	316	124	304	119	293	115
712	Cream	1246	490	1198	471	1154	454
738	Tan-VY LT	344	135	331	130	319	125
739	Tan-UL VY LT	495	194	476	187	458	180
758	Terra Cotta-VY LT	303	119	291	114	281	110
813	Blue-LT	137	53	132	51	127	49
844	Beaver Brown-UL DK	382	150	368	145	354	139
926	Gray Green-MD	530	208	510	200	491	193
927	Gray Green-LT	575	226	552	217	532	209
928	Gray Green-VY LT	451	177	434	170	418	164
931	Antique Blue-MD	551	217	530	208	510	201
932	Antique Blue-LT	513	202	494	194	475	187
948	Peach-VY LT	27	10	26	10	25	9
950	Desert Sand-LT	54	21	52	20	50	19
3021	Brown Gray-VY DK	449	176	431	170	415	163
3024	Brown Gray-VY LT	384	151	370	145	356	140
3032	Mocha Brown-MD	144	56	138	54	133	52
3047	Yellow Beige-LT	73	29	71	28	68	27
3051	Green Gray-DK	226	89	217	85	209	82
3072	Beaver Gray-VY LT	1452	571	1396	549	1344	529
3753	Antique Blue-UL VY LT	410	161	395	155	380	149
3756	Baby Blue-UL VY LT	4656	1832	4476	1762	4311	1697
3768	Gray Green-DK	374	147	359	141	346	136
3772	Desert Sand-VY DK	210	82	202	79	195	76
3778	Terra Cotta-LT	161	63	155	61	149	59
3787	Brown Gray-DK	615	242	591	233	569	224
3790	Beige Gray-UL DK	211	83	203	80	195	77
3859	Rosewood-LT	49	19	47	18	45	17
3861	Cocoa-LT	215	84	207	81	199	78
3864	Mocha Beige-LT	283	111	272	107	262	103
3865	Winter White	3343	1315	3214	1265	3095	1218
3866	Mocha Brown-UL VY LT	661	260	636	250	612	241

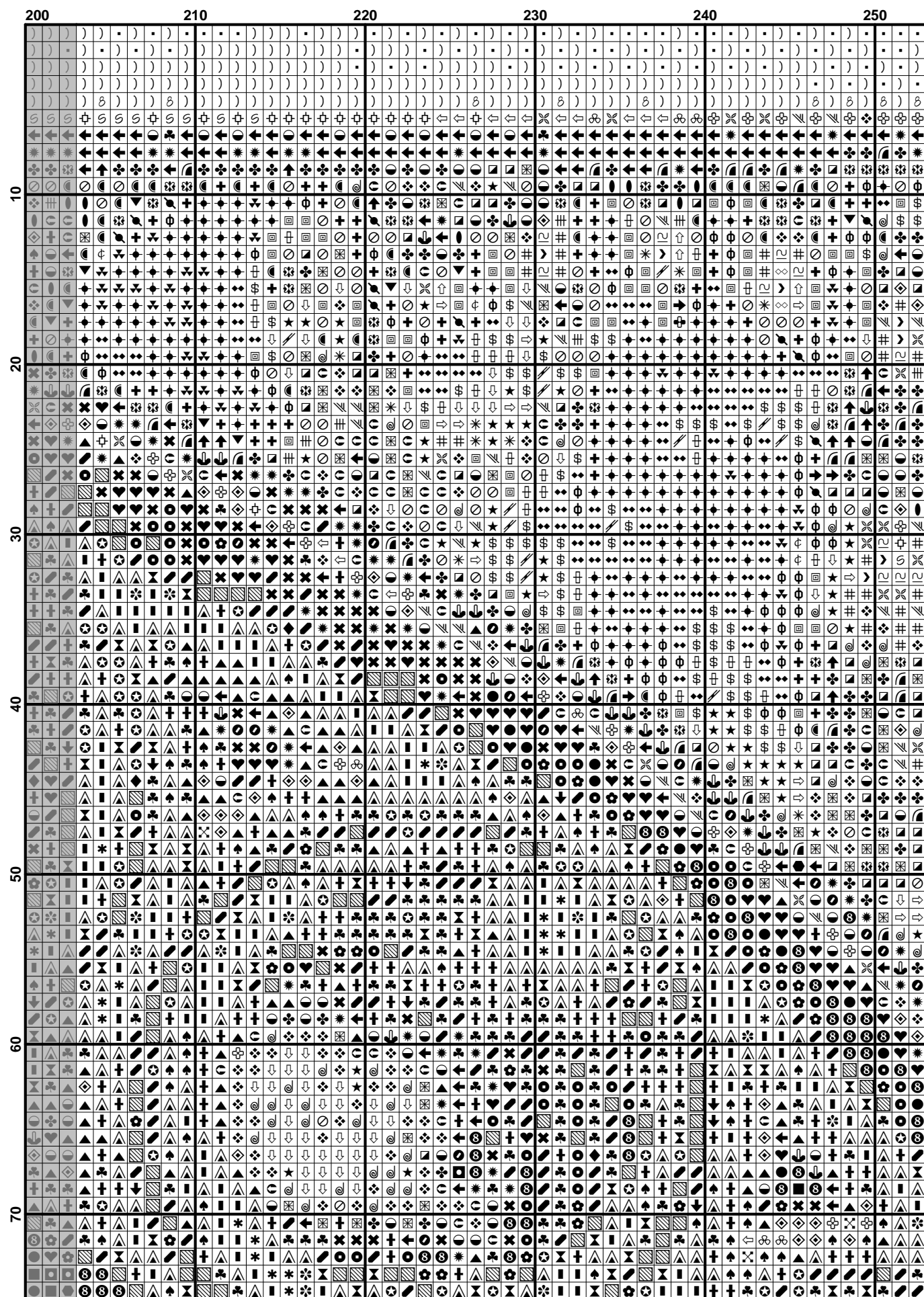
Extended thread usage table.							
DMC	Name	Usage (cm)	Usage (inch)	Usage (cm)	Usage (inch)	Usage (cm)	Usage (inch)
		28		30		32	
223	Shell Pink-LT	66	26	62	24	58	23
317	Pewter Gray	27	10	25	10	24	9
372	Mustard-LT	82	32	77	30	72	28
407	Desert Sand-DK	312	122	291	114	273	107
413	Pewter Gray-DK	78	31	73	29	69	27
414	Steel Gray-DK	262	103	244	96	229	90
415	Pearl Gray	573	226	535	211	502	197
452	Shell Gray-MD	121	48	113	44	106	42
501	Blue Green-DK	155	60	145	56	136	53
503	Blue Green-MD	341	134	318	125	298	117
524	Fern Green-VY LT	183	72	171	67	160	63
535	Ash Gray-VY LT	222	87	207	81	194	76
543	Beige Brown-UL VY LT	125	49	116	46	109	43
640	Beige Gray-VY DK	338	133	316	124	296	116
642	Beige Gray-DK	234	92	218	86	205	80
645	Beaver Gray-VY DK	643	253	600	236	563	221
646	Beaver Gray-DK	478	188	446	175	418	164
647	Beaver Gray-MD	281	111	262	103	246	97
648	Beaver Gray-LT	282	111	263	103	247	97
712	Cream	1113	438	1039	409	974	383
738	Tan-VY LT	307	121	287	113	269	106
739	Tan-UL VY LT	442	174	412	162	386	152
758	Terra Cotta-VY LT	271	106	253	99	237	93
813	Blue-LT	122	48	114	44	107	42
844	Beaver Brown-UL DK	341	134	319	125	299	118
926	Gray Green-MD	473	186	442	173	414	163
927	Gray Green-LT	513	202	479	188	449	177
928	Gray Green-VY LT	403	158	376	148	353	138
931	Antique Blue-MD	492	194	459	181	430	169
932	Antique Blue-LT	458	180	428	168	401	158
948	Peach-VY LT	24	9	22	8	21	8
950	Desert Sand-LT	48	19	45	17	42	16
3021	Brown Gray-VY DK	401	158	374	147	350	138
3024	Brown Gray-VY LT	343	135	320	126	300	118
3032	Mocha Brown-MD	129	50	120	47	113	44
3047	Yellow Beige-LT	66	26	61	24	57	23
3051	Green Gray-DK	202	79	188	74	177	69
3072	Beaver Gray-VY LT	1296	510	1210	476	1134	446
3753	Antique Blue-UL VY LT	366	144	342	134	321	126
3756	Baby Blue-UL VY LT	4157	1636	3880	1527	3637	1432
3768	Gray Green-DK	334	131	311	122	292	115
3772	Desert Sand-VY DK	188	73	175	68	164	64
3778	Terra Cotta-LT	144	57	134	53	126	50
3787	Brown Gray-DK	549	216	512	202	480	189
3790	Beige Gray-UL DK	188	74	176	69	165	65
3859	Rosewood-LT	44	17	41	16	38	15
3861	Cocoa-LT	192	75	179	70	168	66
3864	Mocha Beige-LT	253	99	236	92	221	87
3865	Winter White	2985	1175	2786	1096	2612	1028
3866	Mocha Brown-UL VY LT	590	232	551	217	516	203

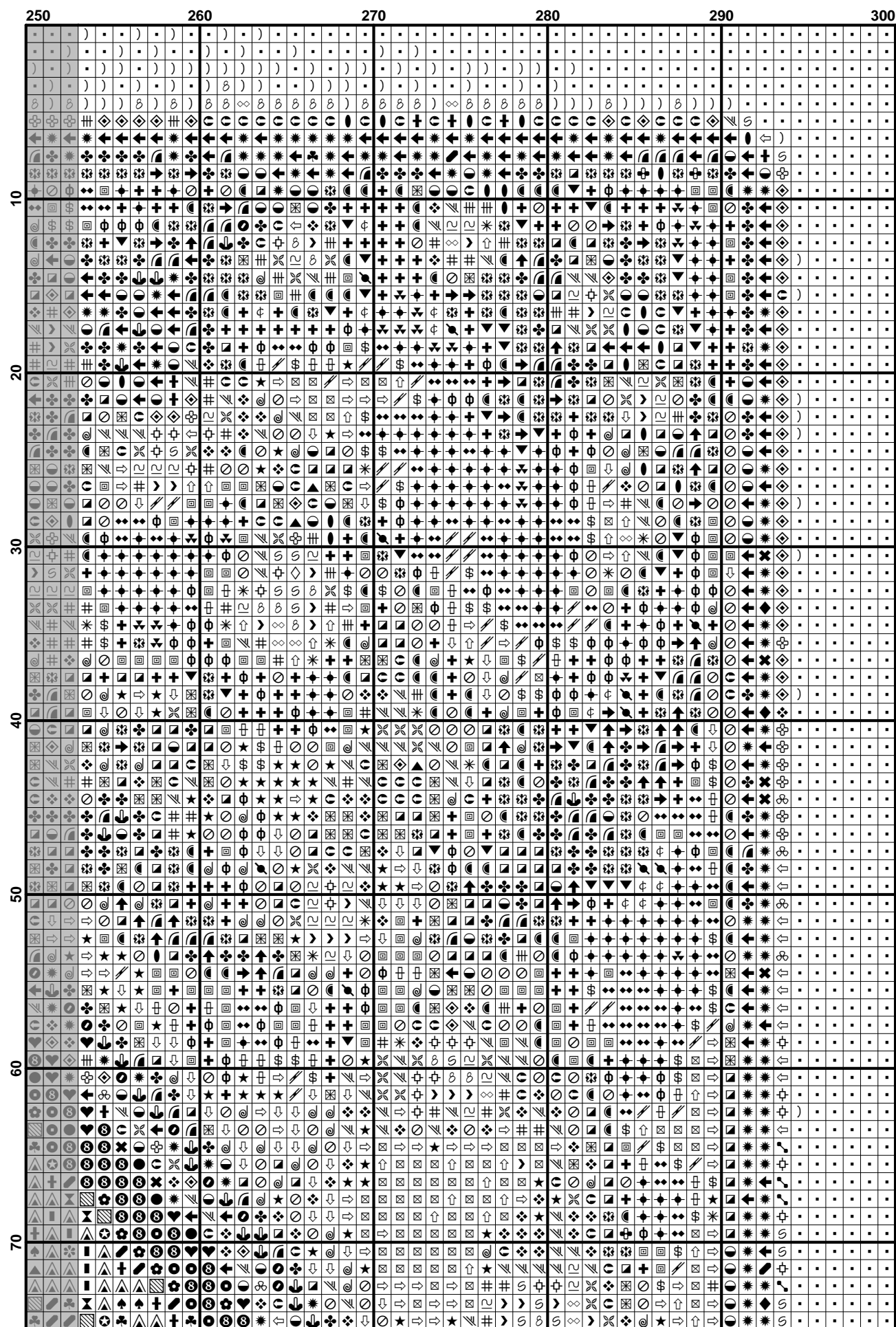


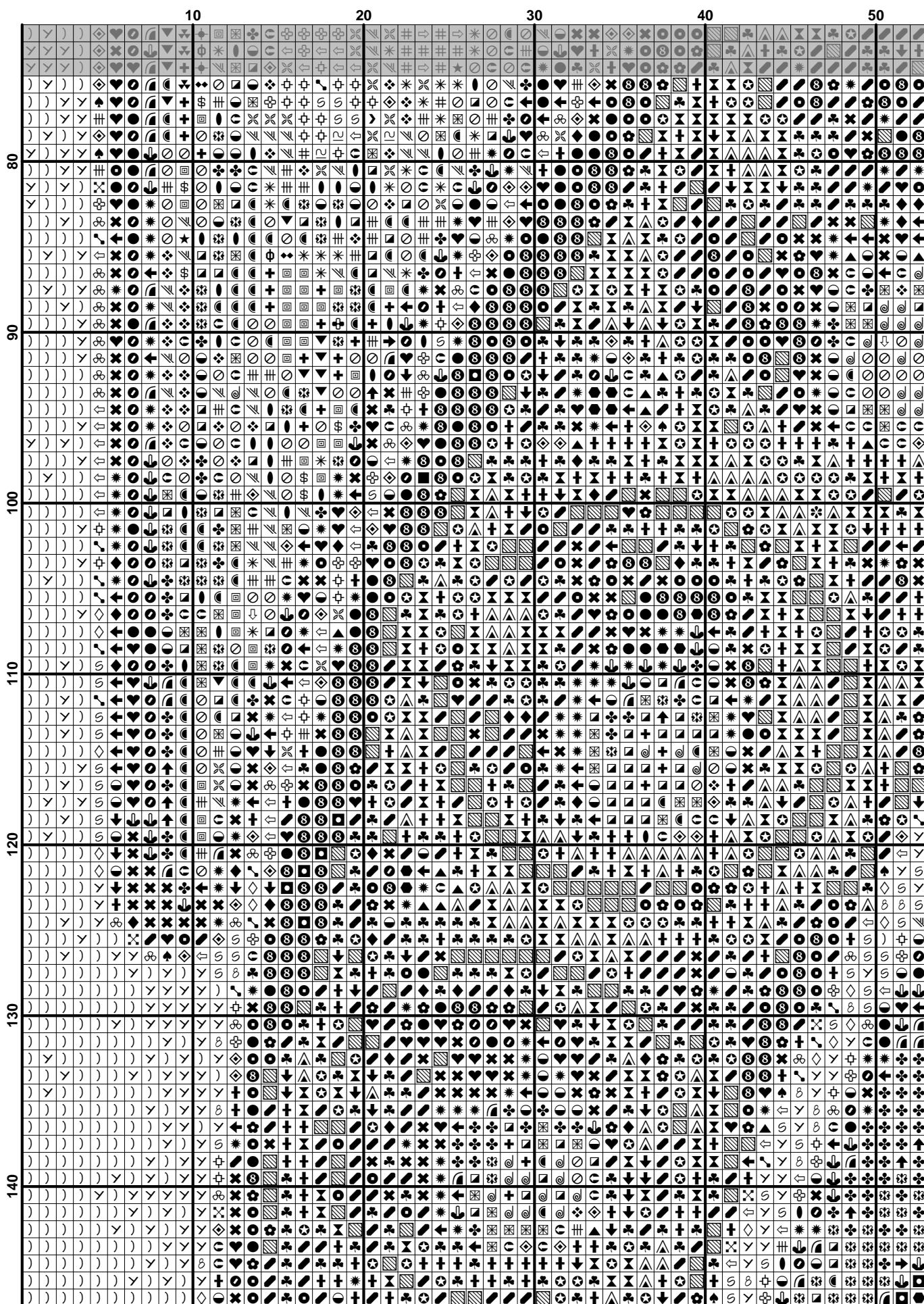


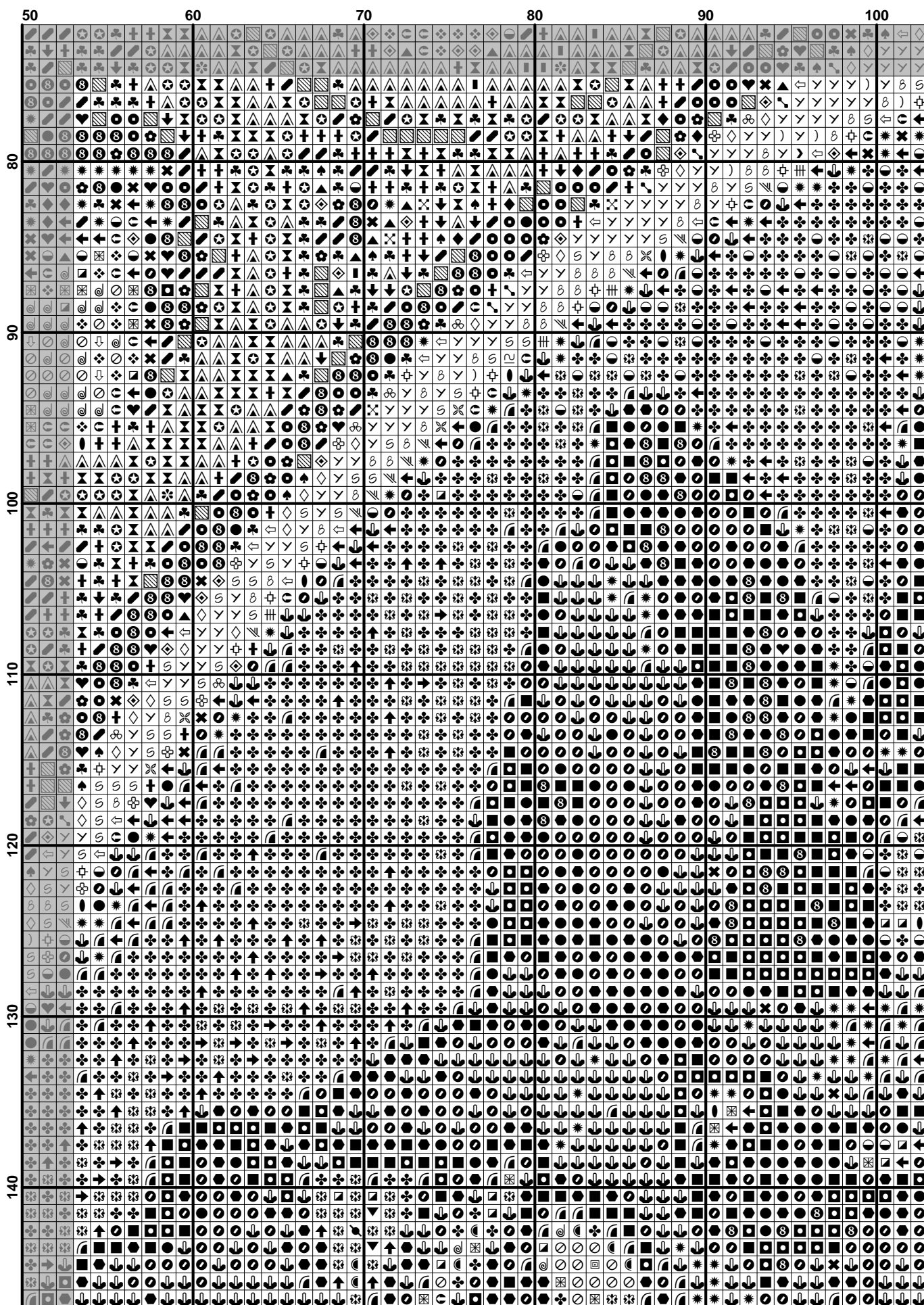


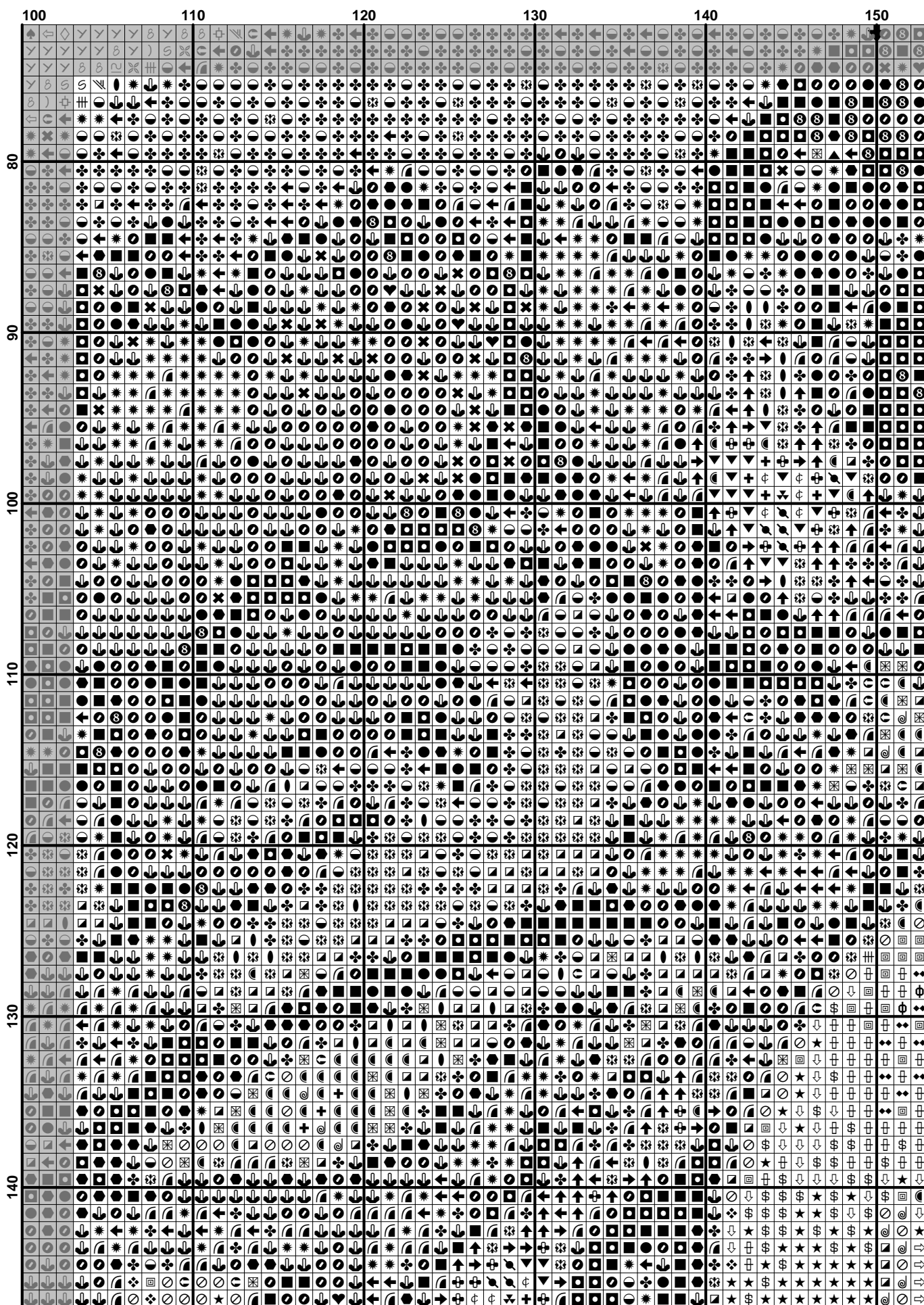


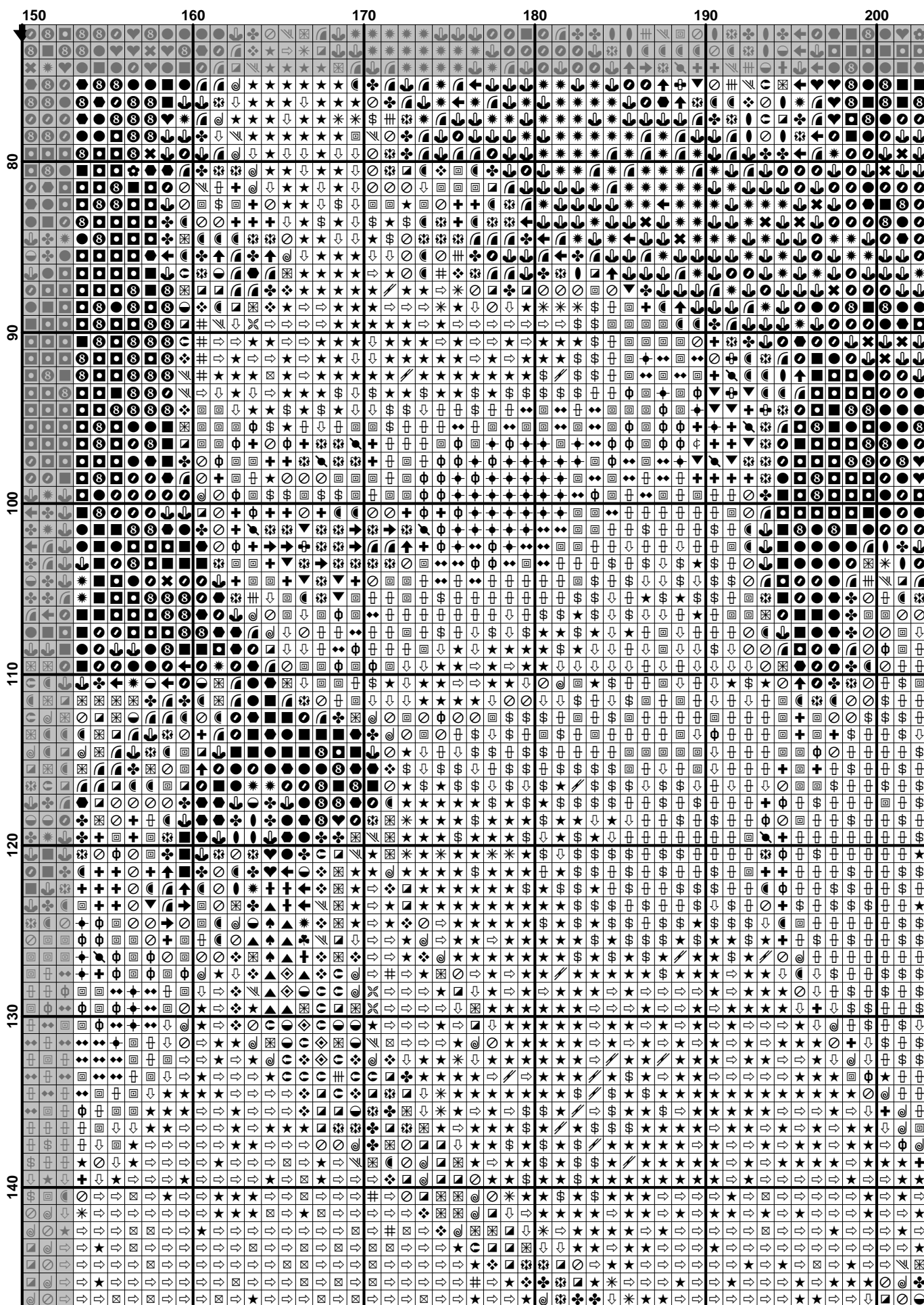




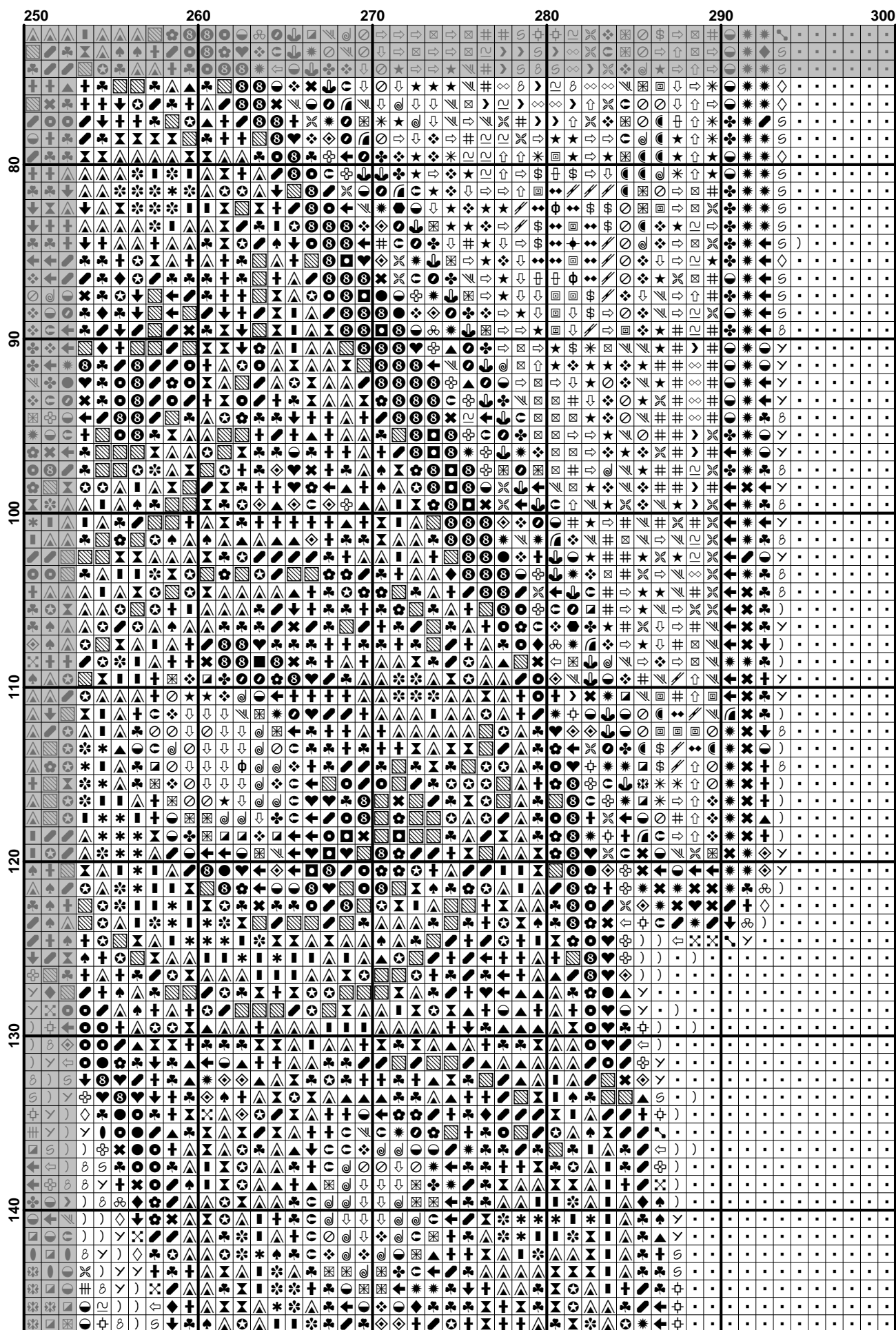


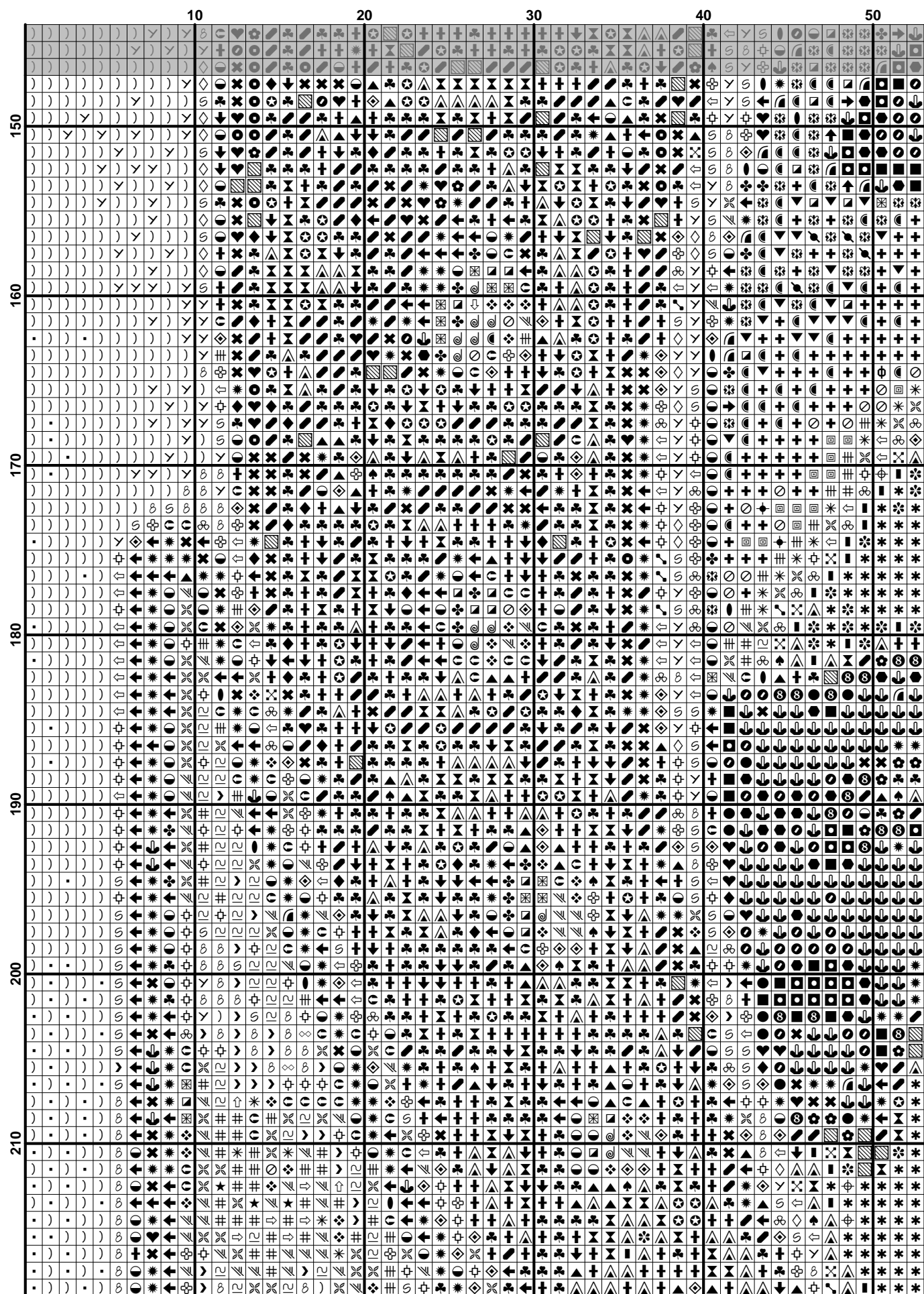








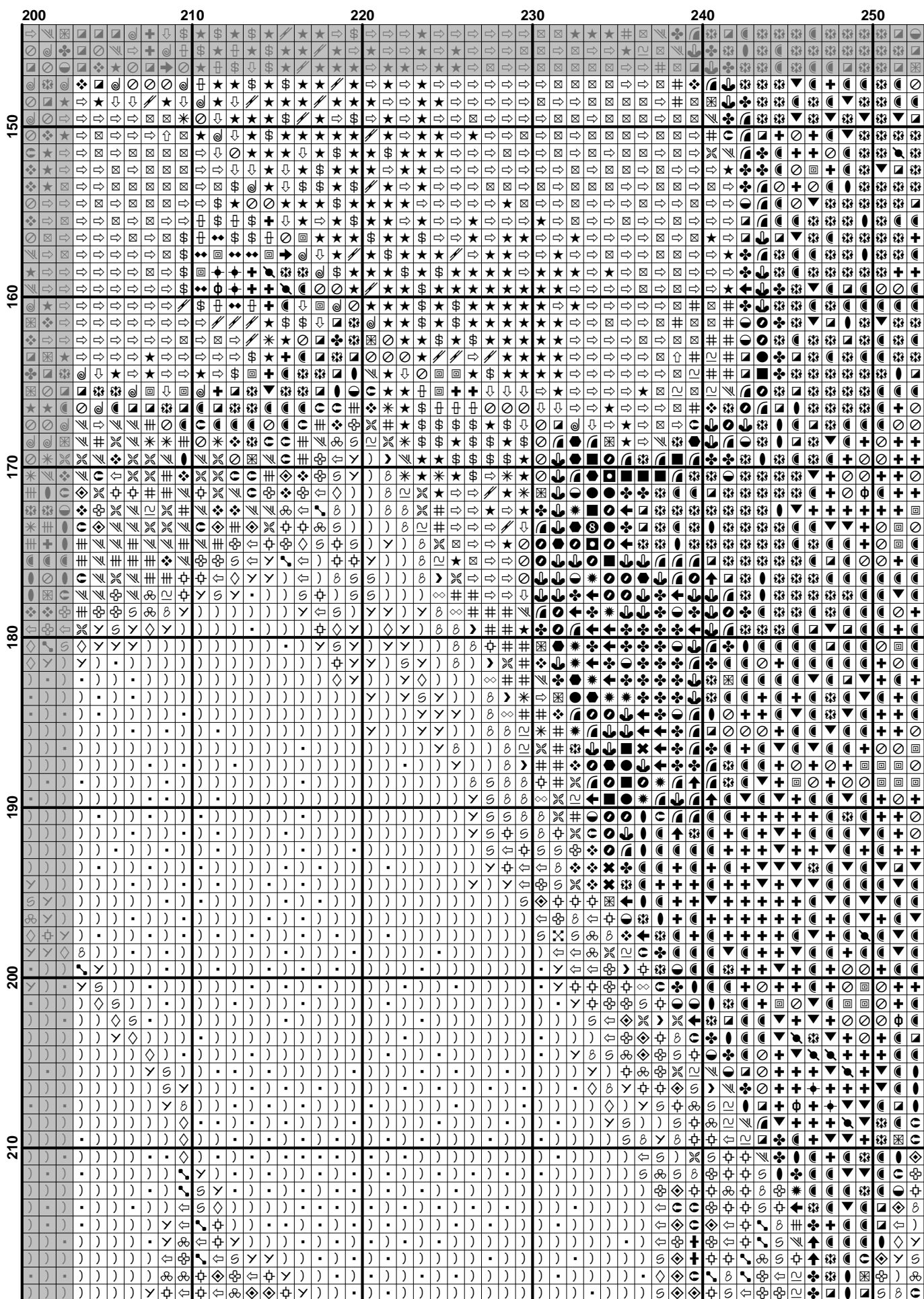


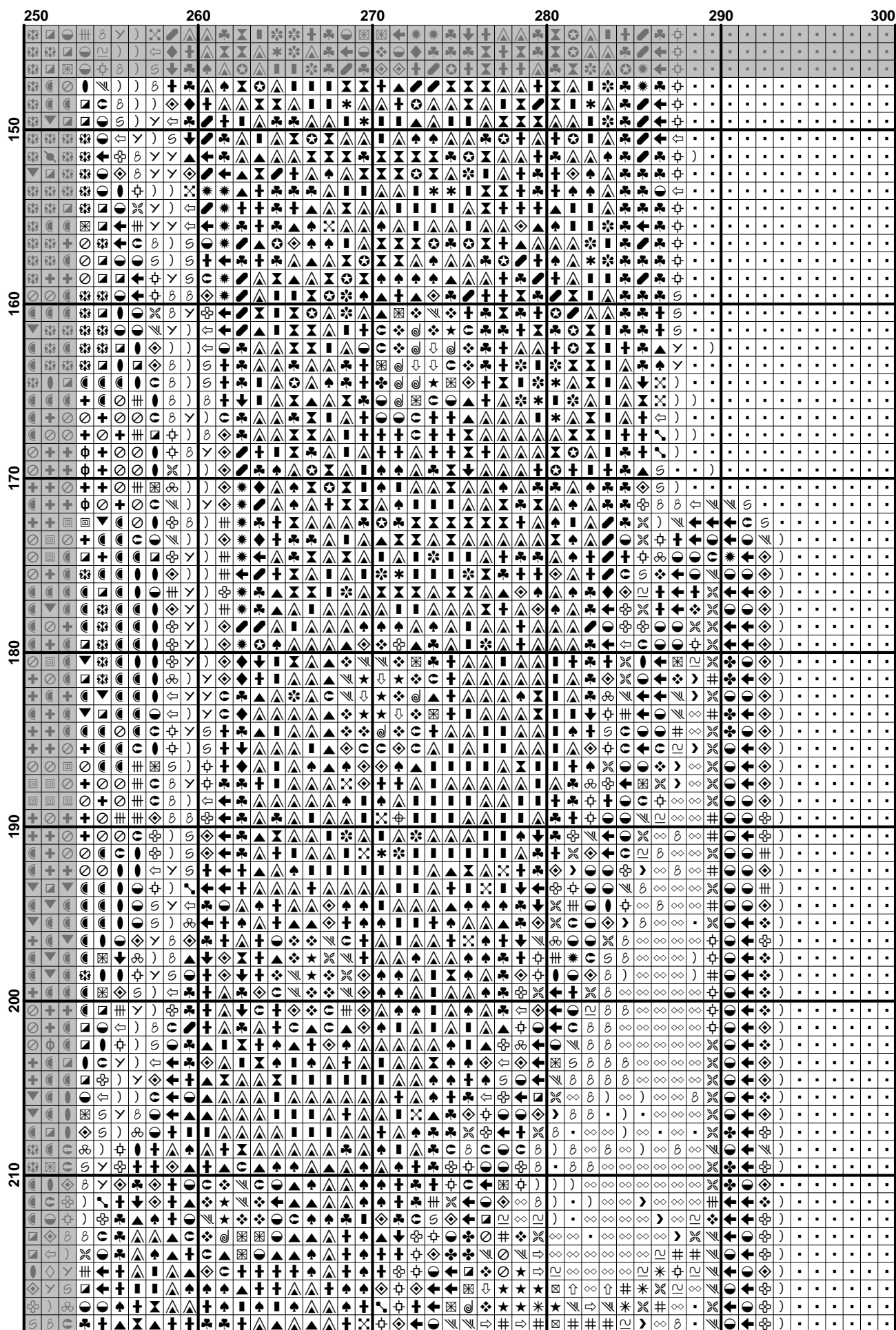


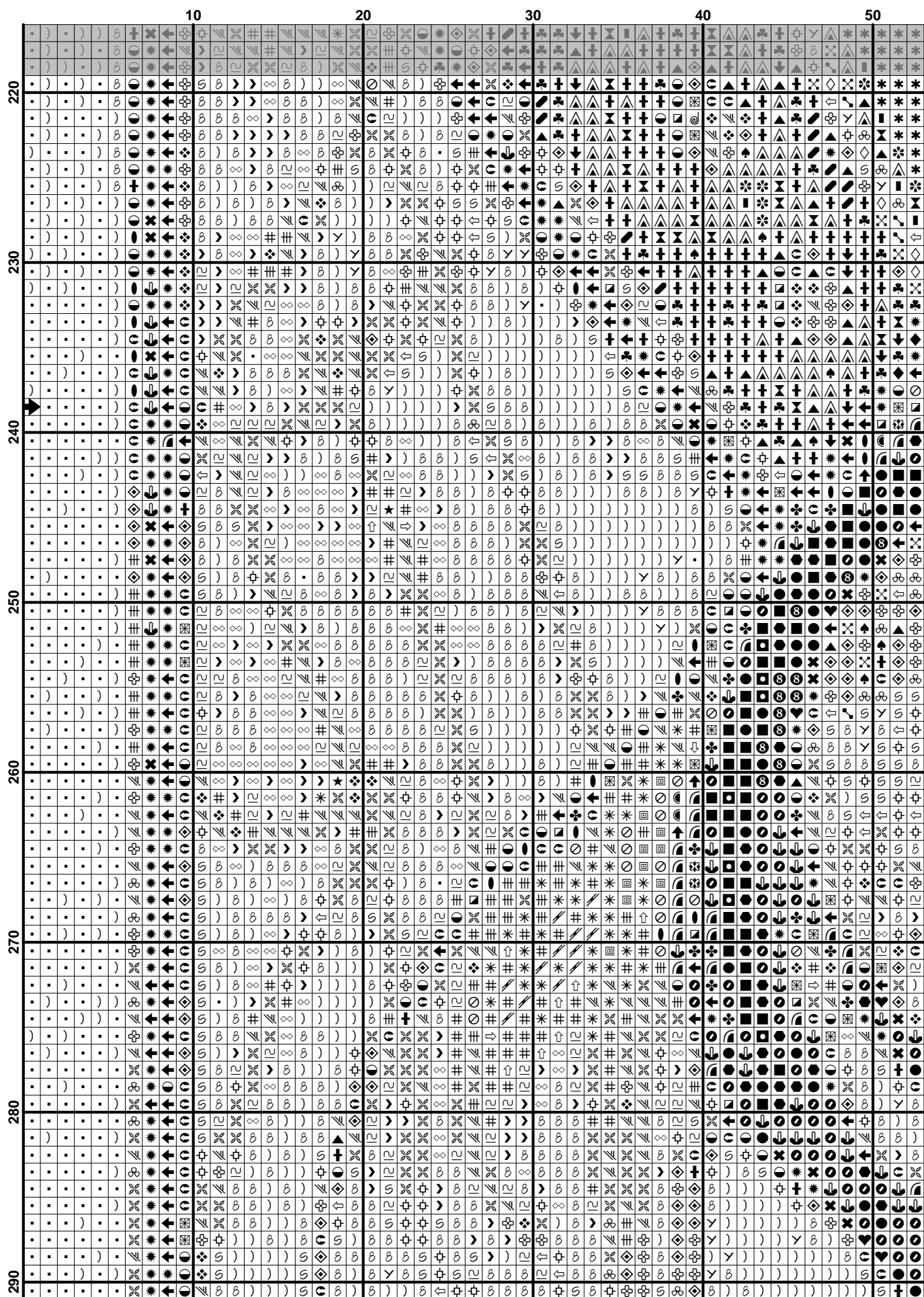


$$(21) \quad \mathcal{L}(\mathcal{A}) = \mathcal{L}(\mathcal{B}) \quad (22)$$

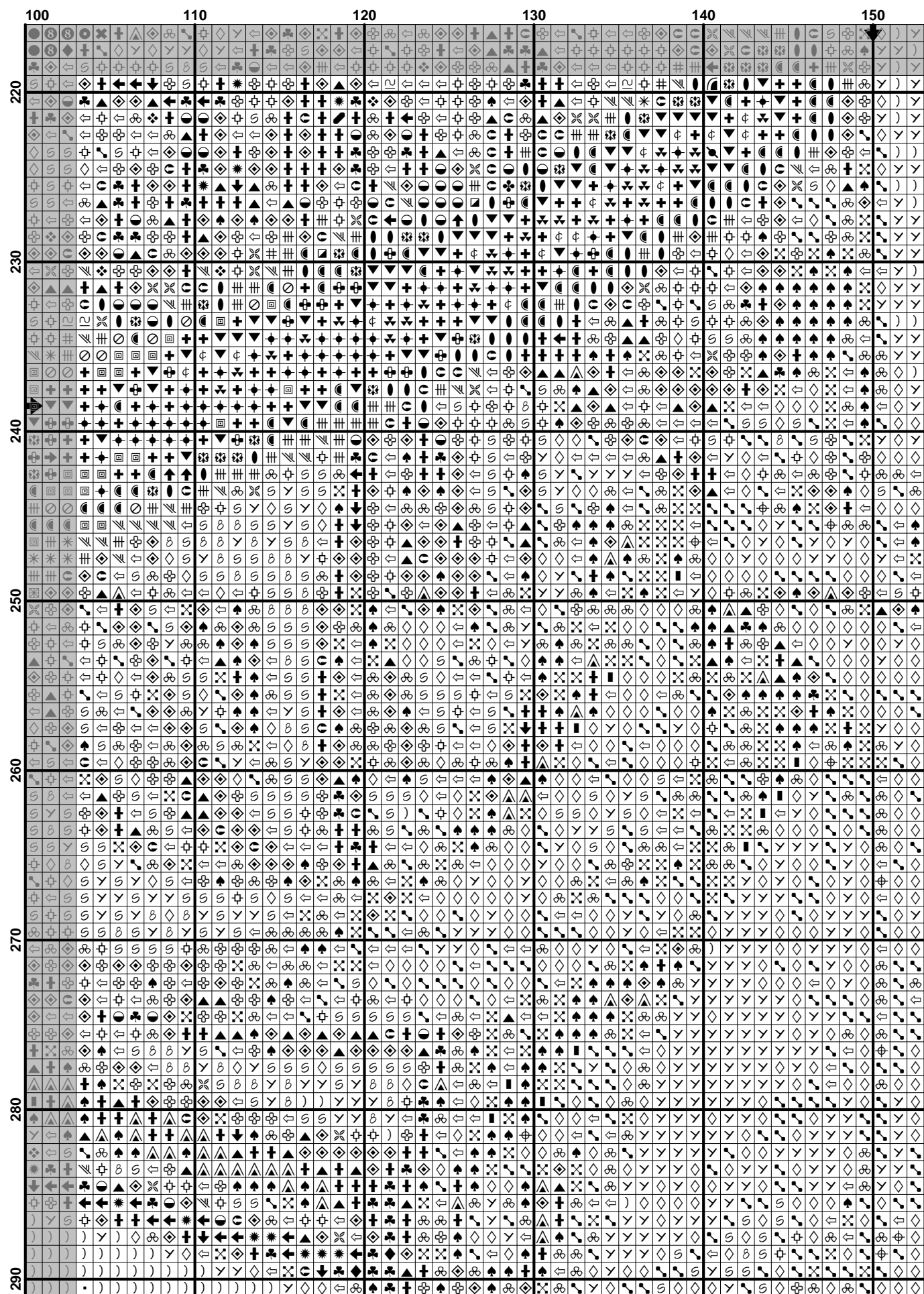


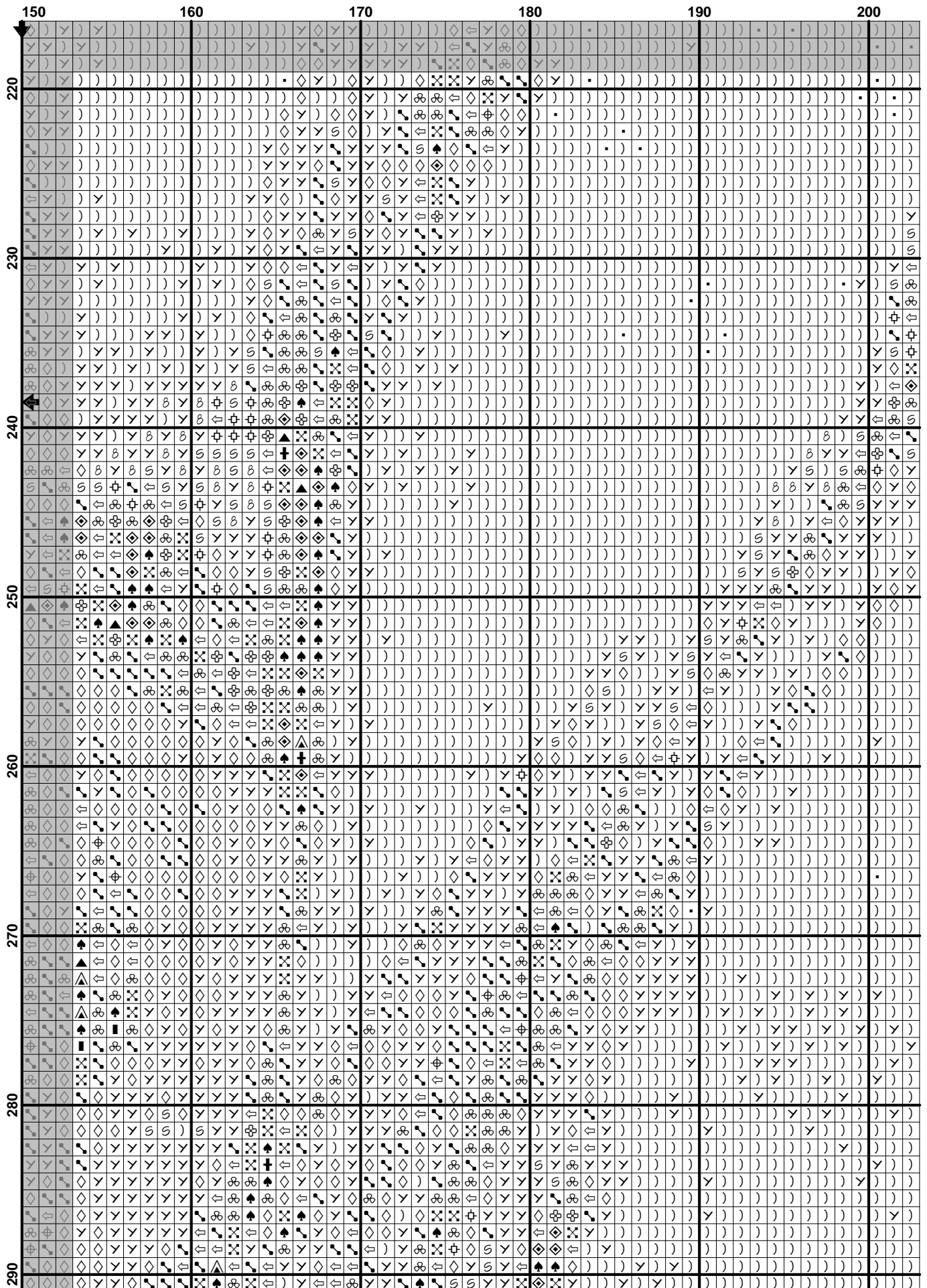


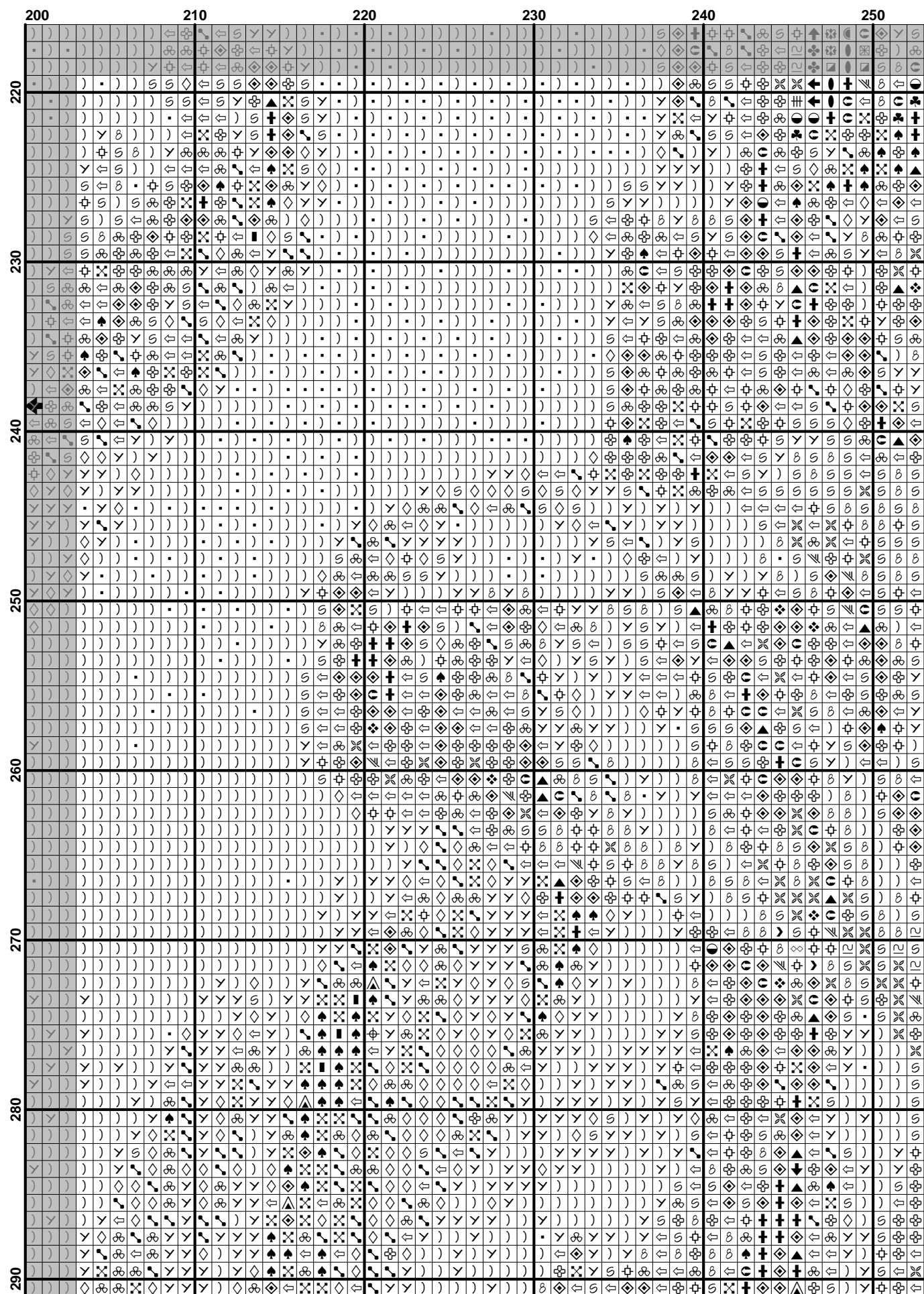






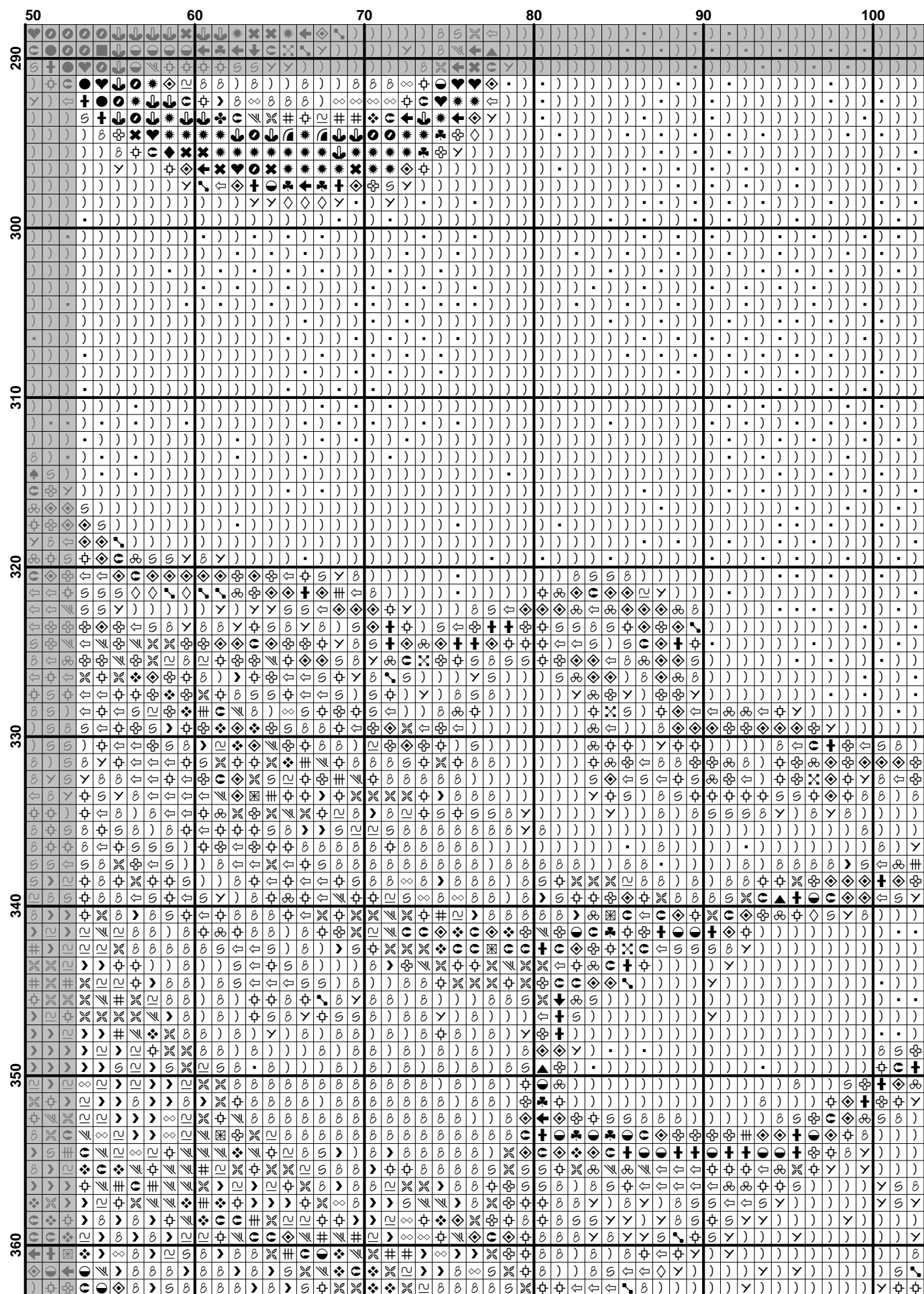




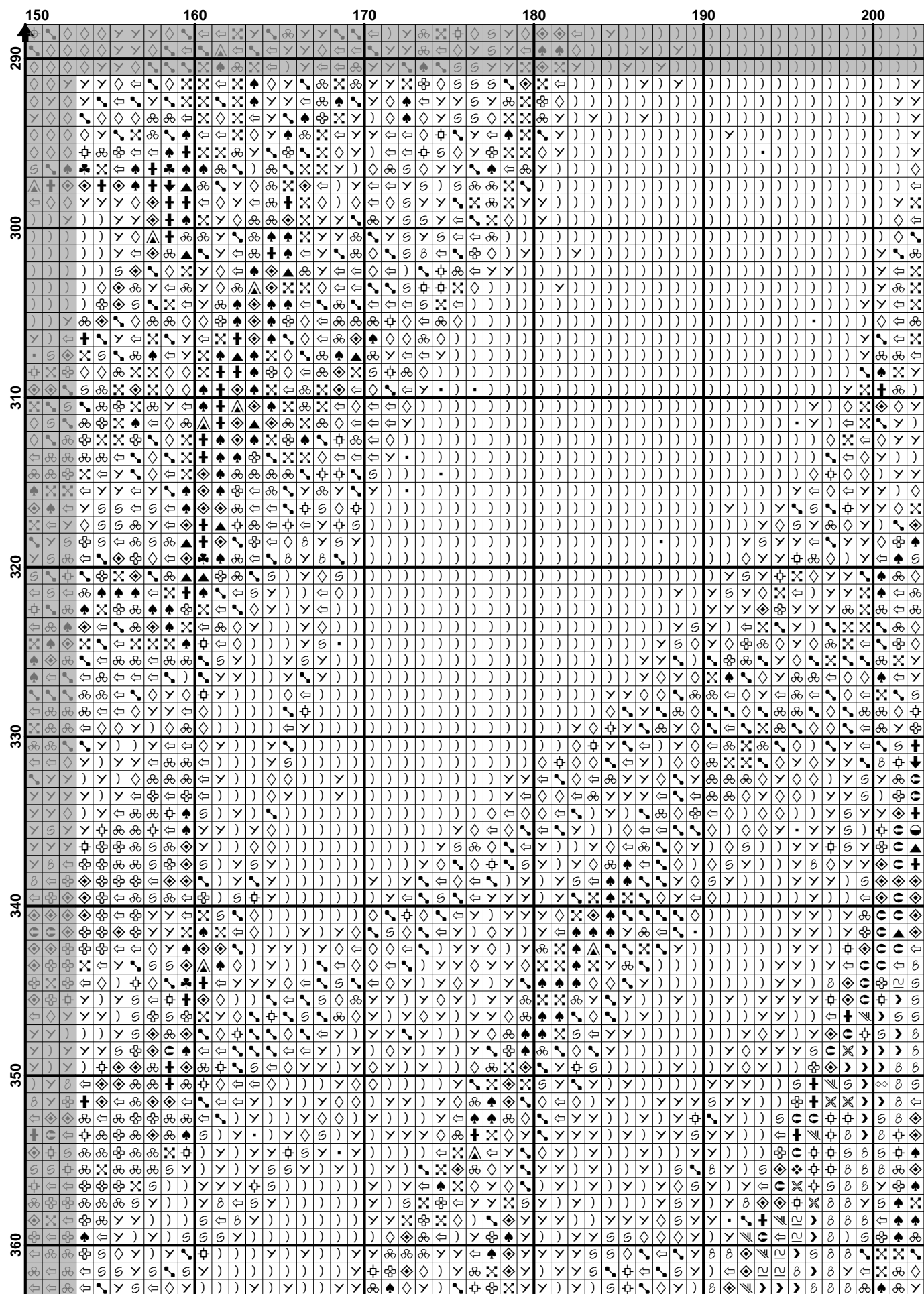


	250	260	270	280	290	300
220	♭	♭	♭	♭	♭	♭
230	♭	♭	♭	♭	♭	♭
240	♭	♭	♭	♭	♭	♭
250	♭	♭	♭	♭	♭	♭
260	♭	♭	♭	♭	♭	♭
270	♭	♭	♭	♭	♭	♭
280	♭	♭	♭	♭	♭	♭
290	♭	♭	♭	♭	♭	♭
300	♭	♭	♭	♭	♭	♭

[illegible]

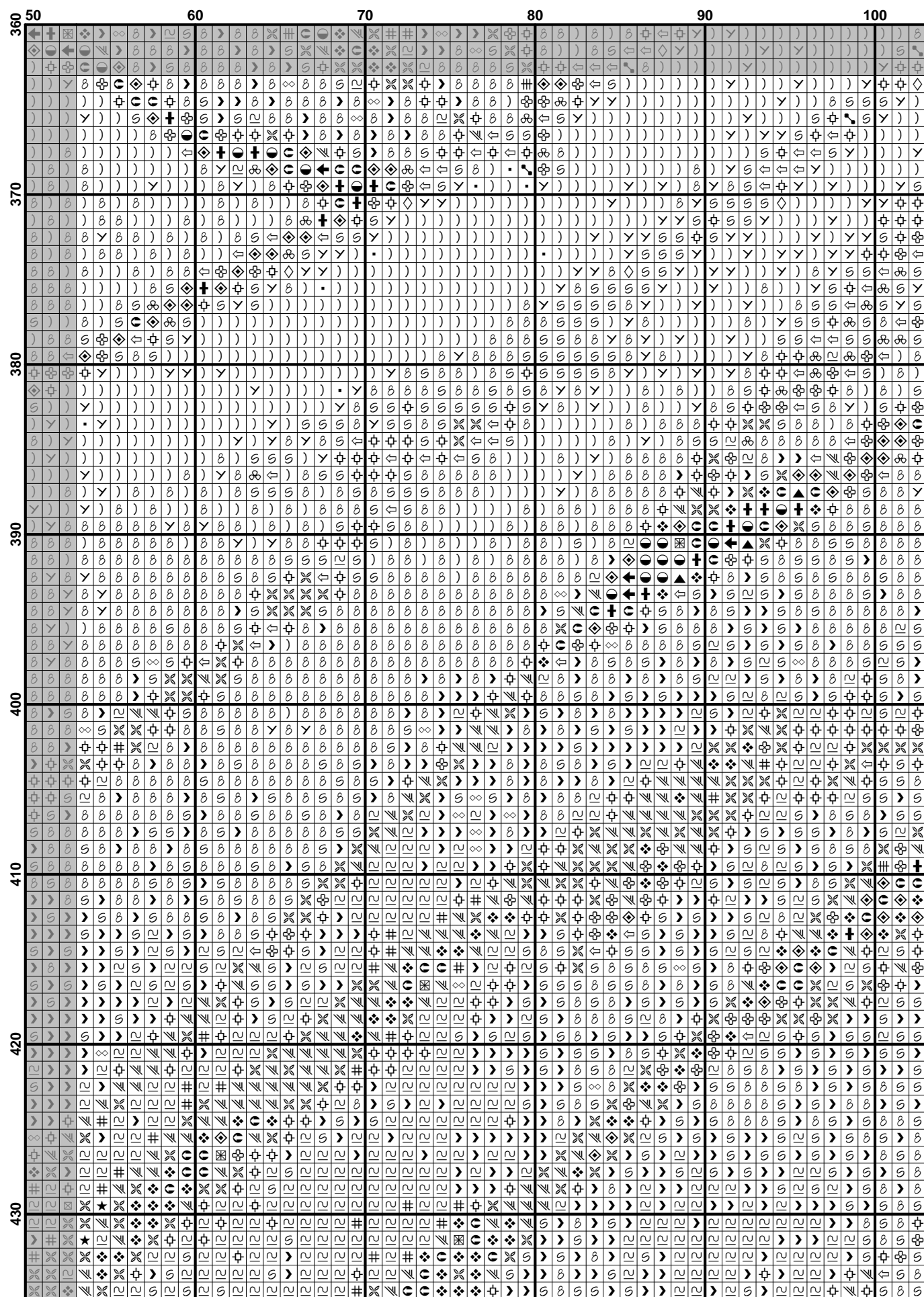


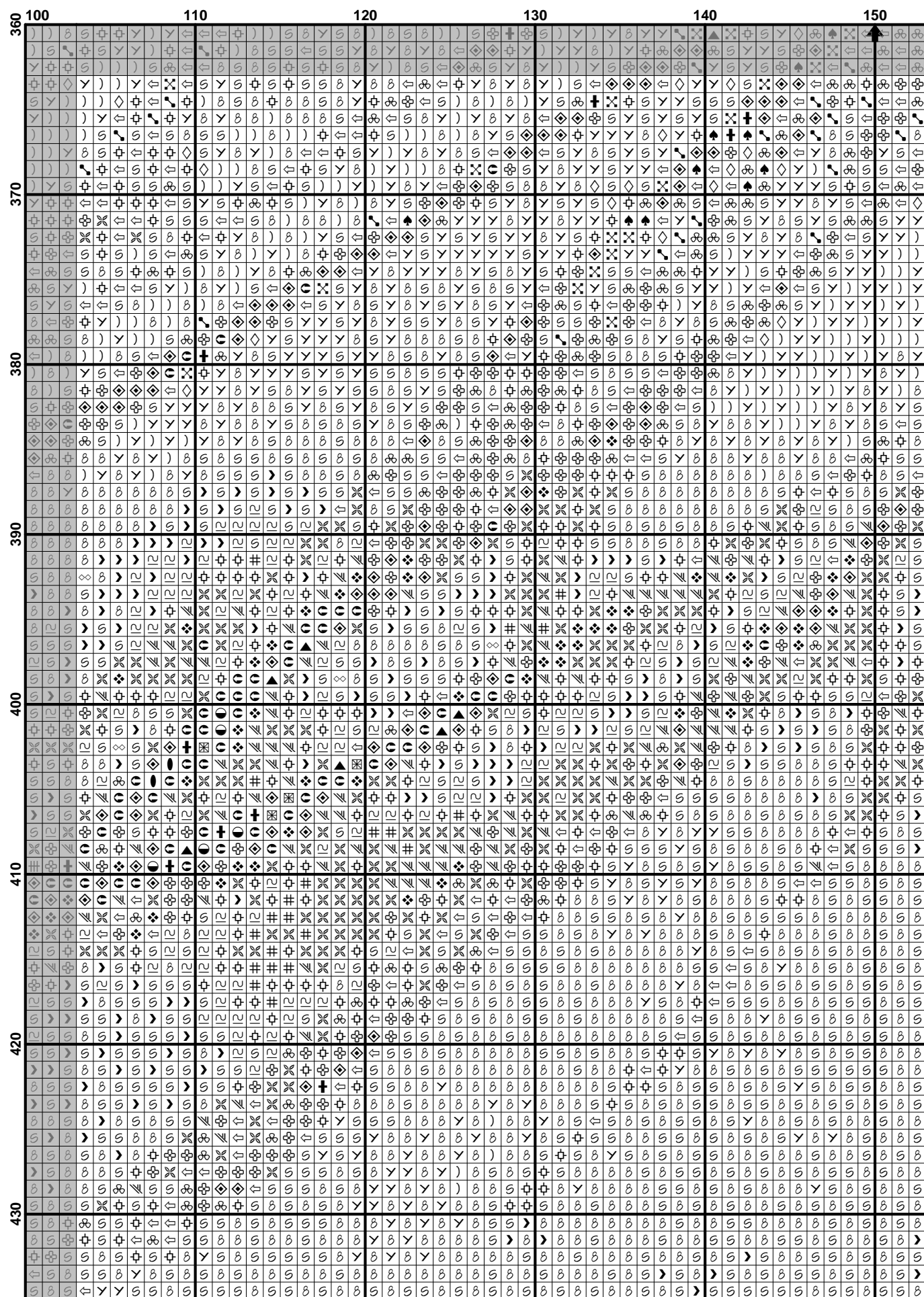
[illegible]



	200	210	220	230	240	250
290	Y	Y	Y	Y	Y	Y
291	Y	Y	Y	Y	Y	Y
292	Y	Y	Y	Y	Y	Y
293	Y	Y	Y	Y	Y	Y
294	Y	Y	Y	Y	Y	Y
295	Y	Y	Y	Y	Y	Y
296	Y	Y	Y	Y	Y	Y
297	Y	Y	Y	Y	Y	Y
298	Y	Y	Y	Y	Y	Y
299	Y	Y	Y	Y	Y	Y
300	Y	Y	Y	Y	Y	Y
301	Y	Y	Y	Y	Y	Y
302	Y	Y	Y	Y	Y	Y
303	Y	Y	Y	Y	Y	Y
304	Y	Y	Y	Y	Y	Y
305	Y	Y	Y	Y	Y	Y
306	Y	Y	Y	Y	Y	Y
307	Y	Y	Y	Y	Y	Y
308	Y	Y	Y	Y	Y	Y
309	Y	Y	Y	Y	Y	Y
310	Y	Y	Y	Y	Y	Y
311	Y	Y	Y	Y	Y	Y
312	Y	Y	Y	Y	Y	Y
313	Y	Y	Y	Y	Y	Y
314	Y	Y	Y	Y	Y	Y
315	Y	Y	Y	Y	Y	Y
316	Y	Y	Y	Y	Y	Y
317	Y	Y	Y	Y	Y	Y
318	Y	Y	Y	Y	Y	Y
319	Y	Y	Y	Y	Y	Y
320	Y	Y	Y	Y	Y	Y
321	Y	Y	Y	Y	Y	Y
322	Y	Y	Y	Y	Y	Y
323	Y	Y	Y	Y	Y	Y
324	Y	Y	Y	Y	Y	Y
325	Y	Y	Y	Y	Y	Y
326	Y	Y	Y	Y	Y	Y
327	Y	Y	Y	Y	Y	Y
328	Y	Y	Y	Y	Y	Y
329	Y	Y	Y	Y	Y	Y
330	Y	Y	Y	Y	Y	Y
331	Y	Y	Y	Y	Y	Y
332	Y	Y	Y	Y	Y	Y
333	Y	Y	Y	Y	Y	Y
334	Y	Y	Y	Y	Y	Y
335	Y	Y	Y	Y	Y	Y
336	Y	Y	Y	Y	Y	Y
337	Y	Y	Y	Y	Y	Y
338	Y	Y	Y	Y	Y	Y
339	Y	Y	Y	Y	Y	Y
340	Y	Y	Y	Y	Y	Y
341	Y	Y	Y	Y	Y	Y
342	Y	Y	Y	Y	Y	Y
343	Y	Y	Y	Y	Y	Y
344	Y	Y	Y	Y	Y	Y
345	Y	Y	Y	Y	Y	Y
346	Y	Y	Y	Y	Y	Y
347	Y	Y	Y	Y	Y	Y
348	Y	Y	Y	Y	Y	Y
349	Y	Y	Y	Y	Y	Y
350	Y	Y	Y	Y	Y	Y
351	Y	Y	Y	Y	Y	Y
352	Y	Y	Y	Y	Y	Y
353	Y	Y	Y	Y	Y	Y
354	Y	Y	Y	Y	Y	Y
355	Y	Y	Y	Y	Y	Y
356	Y	Y	Y	Y	Y	Y
357	Y	Y	Y	Y	Y	Y
358	Y	Y	Y	Y	Y	Y
359	Y	Y	Y	Y	Y	Y
360	Y	Y	Y	Y	Y	Y

$$(37) \quad \frac{1}{\Gamma(\alpha)} \int_0^t (t-s)^{\alpha-1} f(s) ds = \frac{1}{\Gamma(\alpha)} \int_0^t (t-s)^{\alpha-1} f(s) ds + \frac{1}{\Gamma(\alpha)} \int_t^\infty (t-s)^{\alpha-1} f(s) ds$$

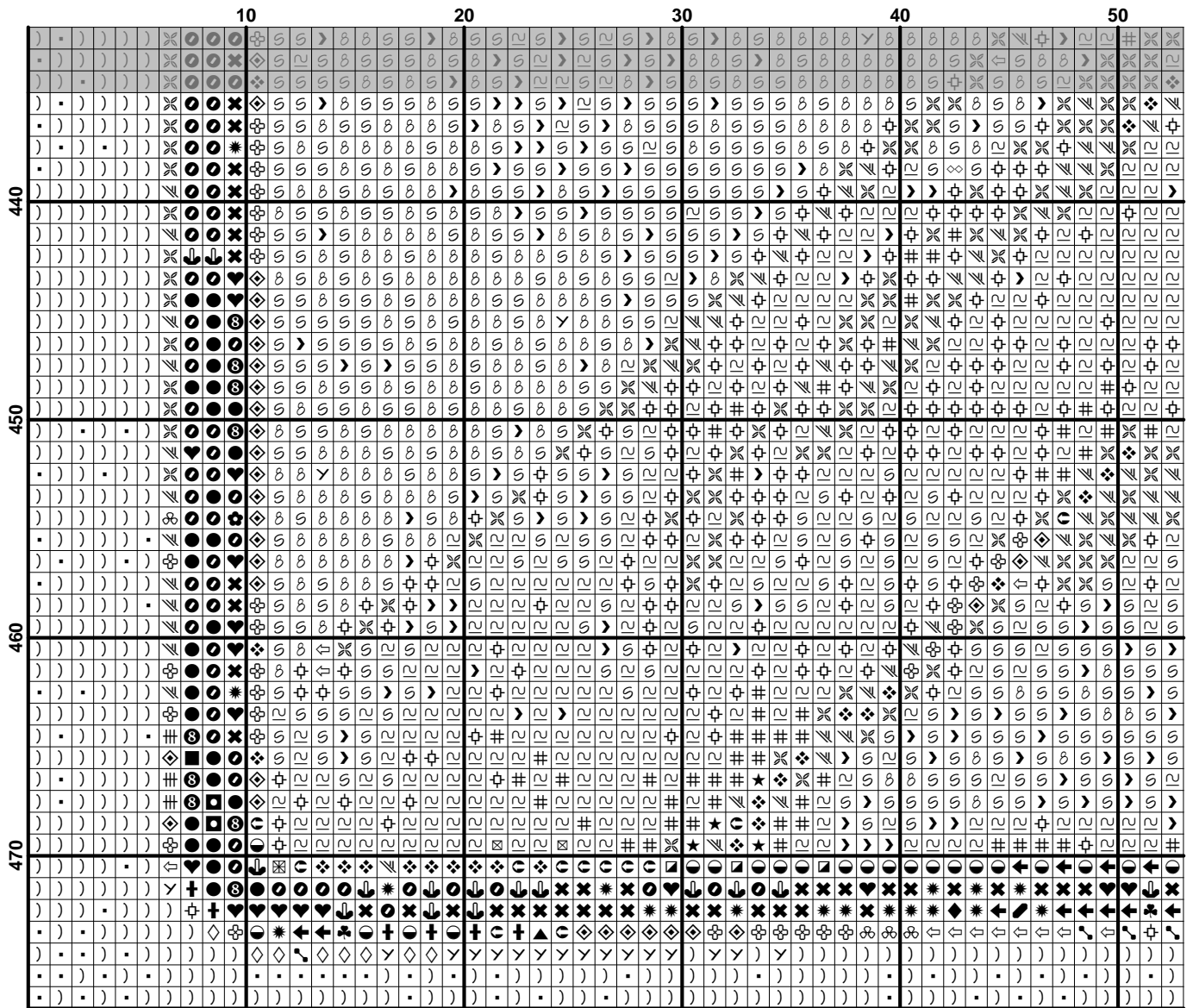


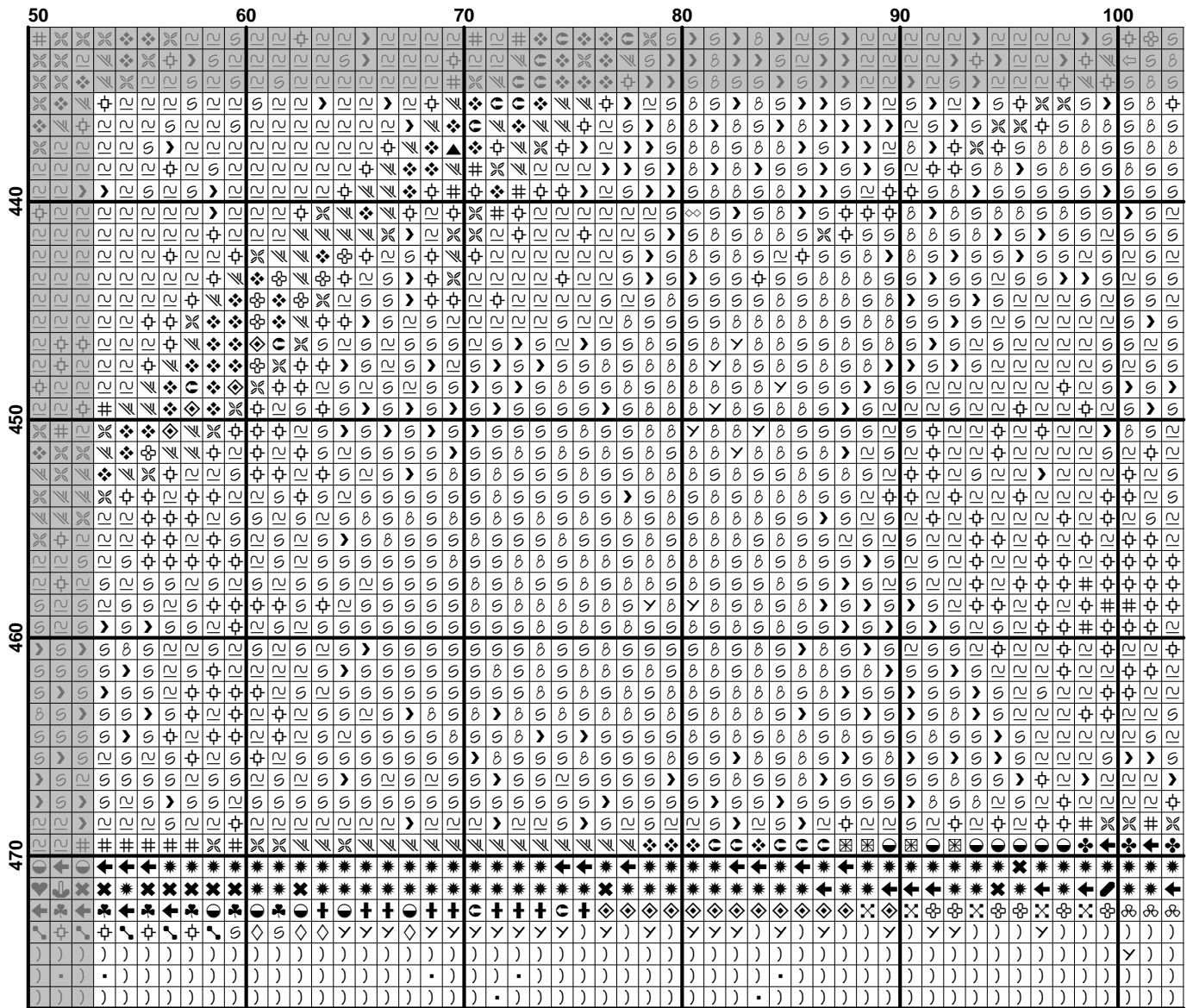


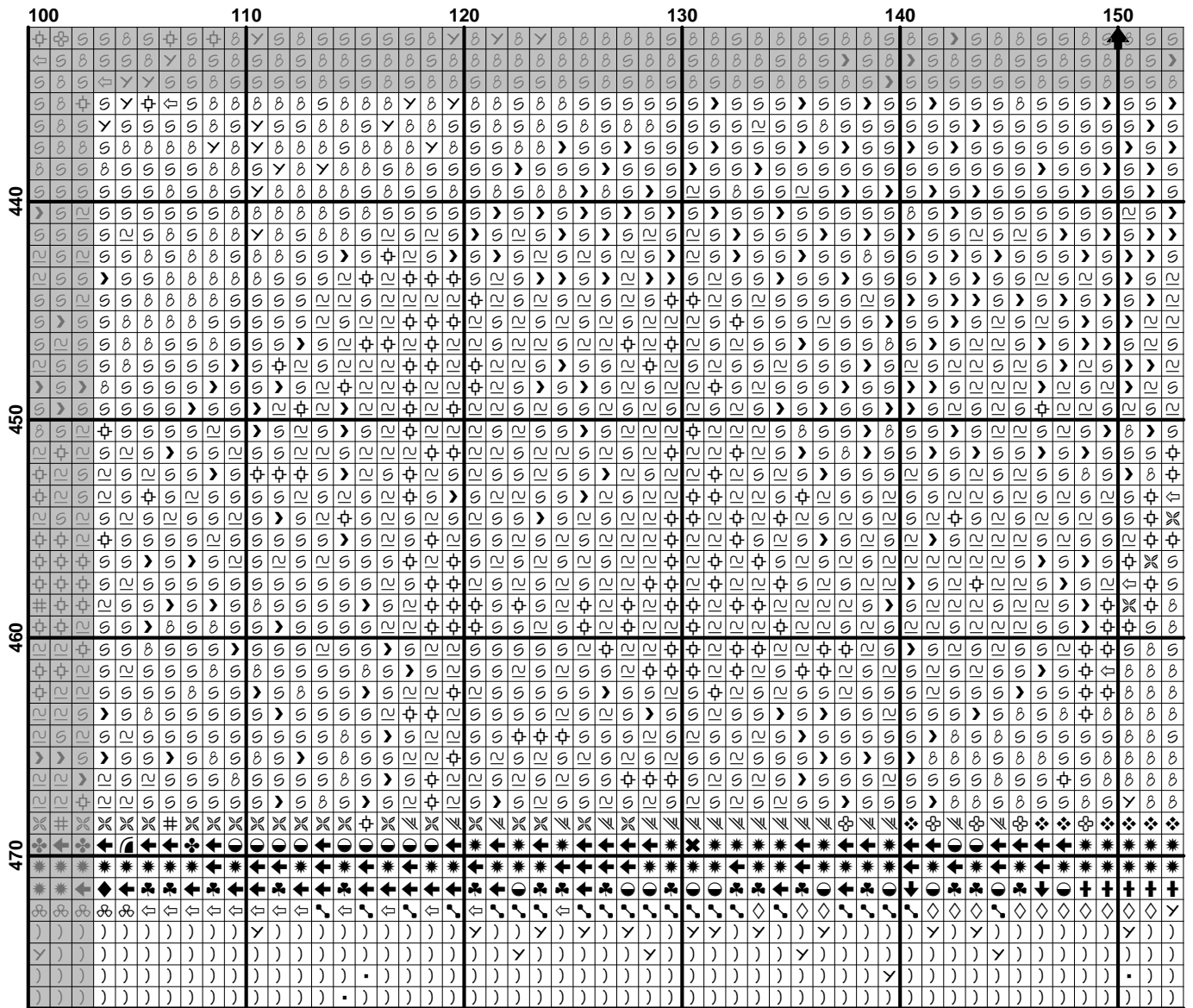


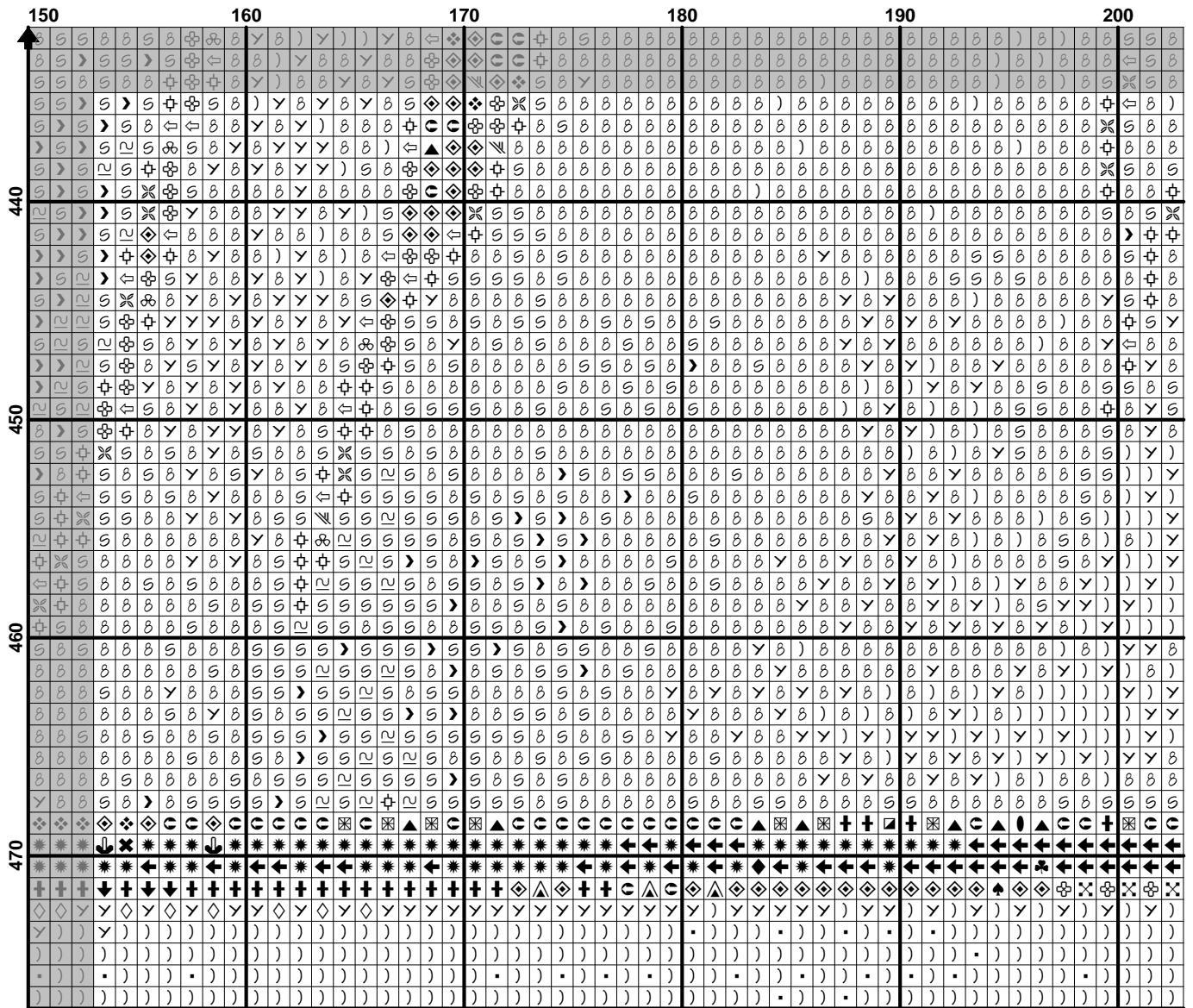
[illegible]

(42)









	200	210	220	230	240	250
440						
450						
460						
470						

[illegible]