



FALL 2014

light in the dark *blouse*

PATTERN

by **KATRIN VORBECK**

Project photo on page **53**; instructions on page **96** of *Stitch* Fall 2014.

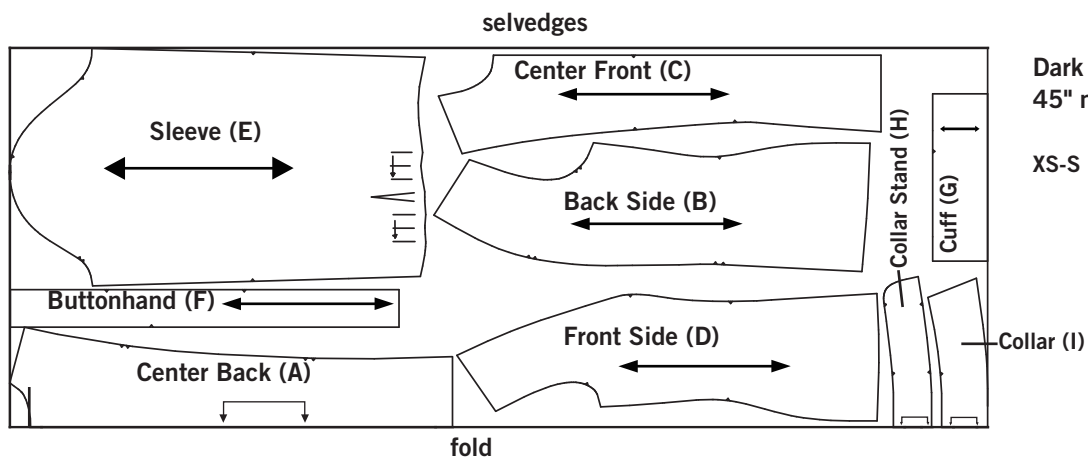
This semi-fitted, sportive blouse with an elegant touch has princess seams that flatter the silhouette. The button band forms a nice V-neck and reveals the contrasting fabric on the inside of the blouse. The colored inside and the matching buttons are a fun twist on a classic piece that shouldn't be missing in any wardrobe. Your choice of fabrics make it fun to wear, or suitable for work or special occasions.



PHOTO BY JACK DEUTSCH

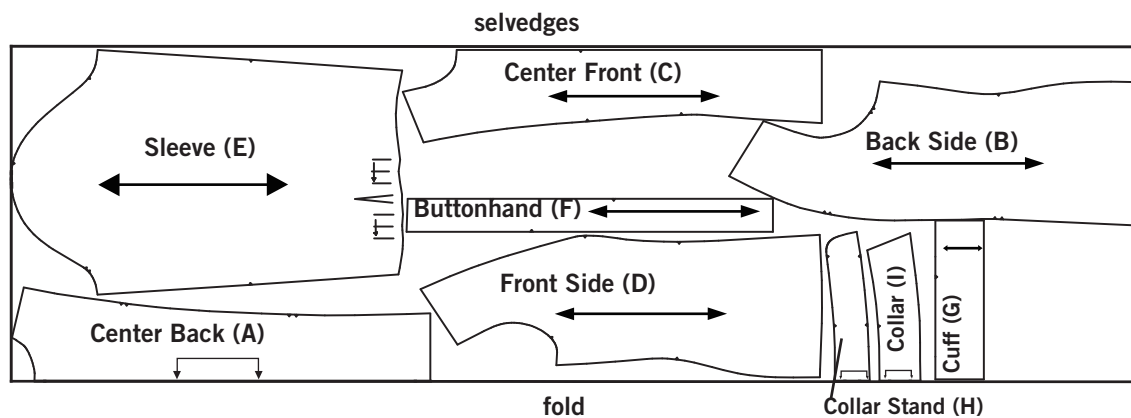
45/60" main

XS, S, M, L, XL



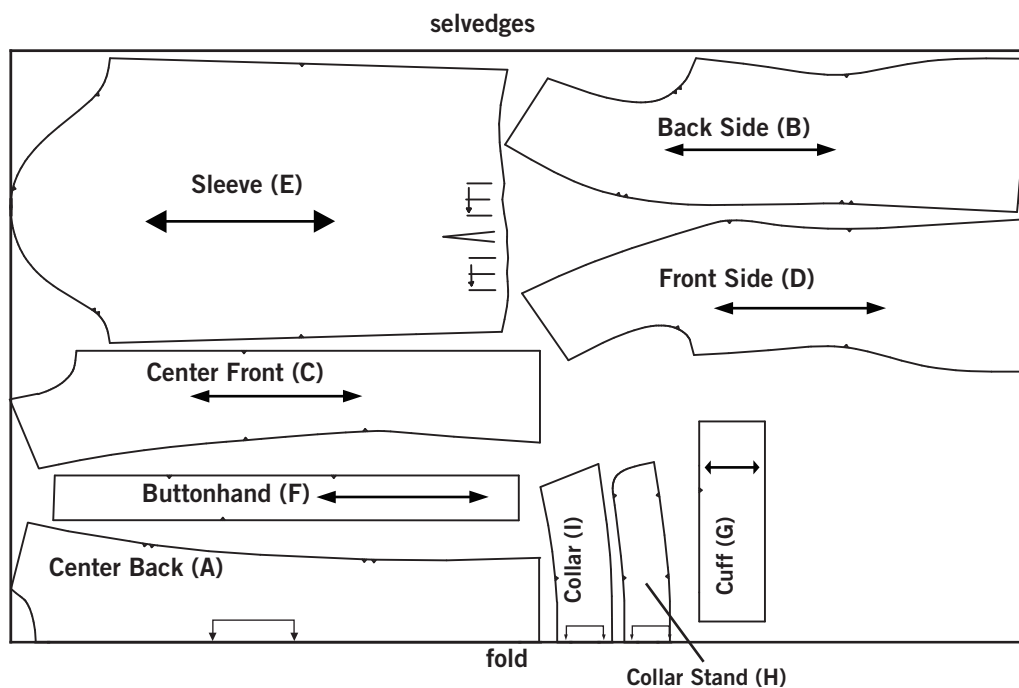
**Dark Blouse
45" main**

XS-S $1\frac{5}{8}$ yds



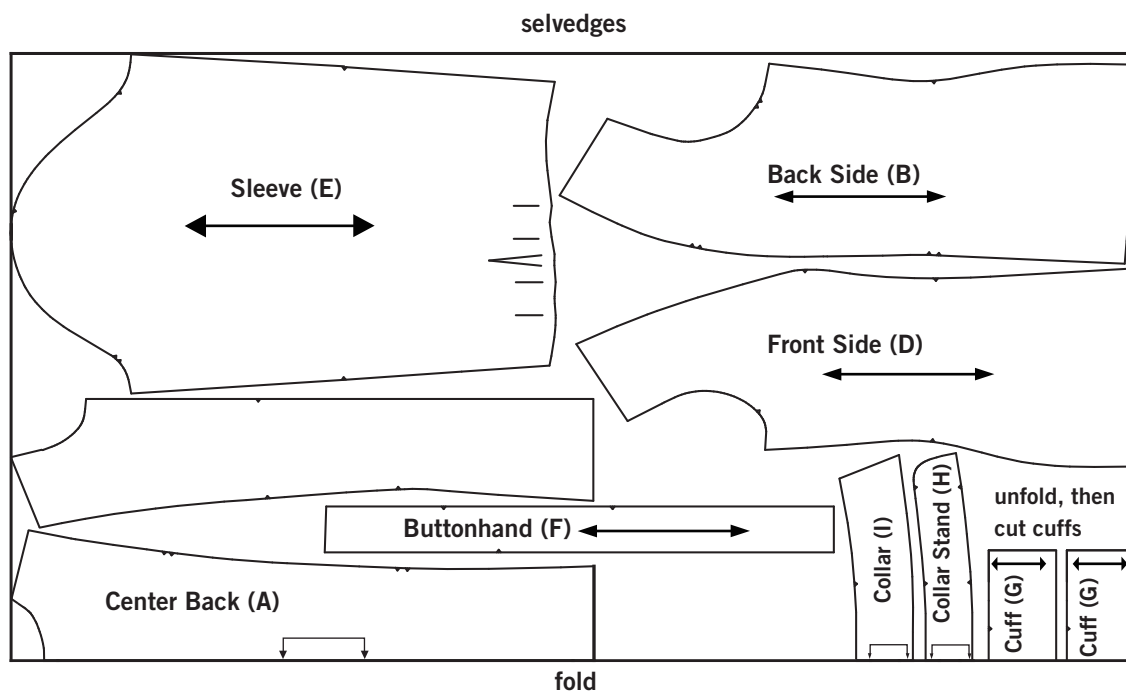
**Dark Blouse
45" main**

M 2 yds
L-XL $1\frac{5}{8}$ yds



Dark Blouse
60" main

XS-S 1½ yds



Dark Blouse
60" main

M-L 1½ yds

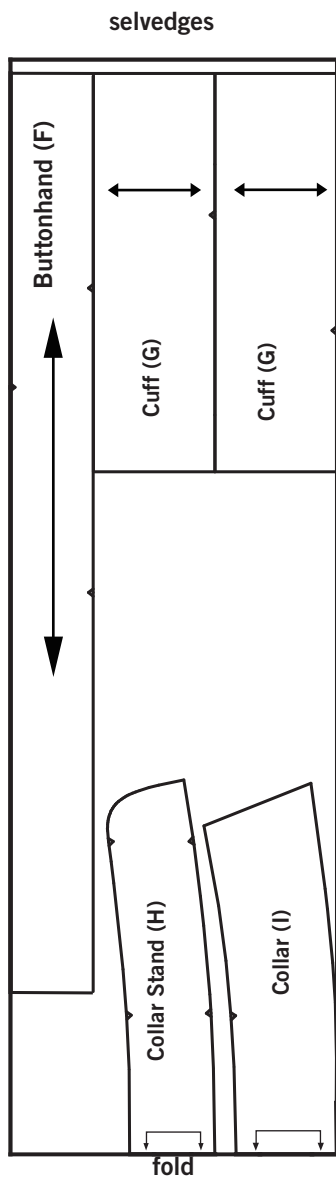
XL 1⅝ yds

45/60" contrast

All Sizes

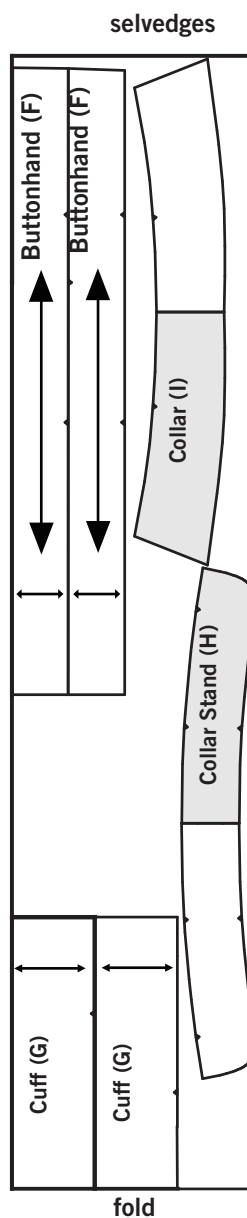
Dark Blouse 60" contrast

All Sizes $\frac{1}{4}$ yds



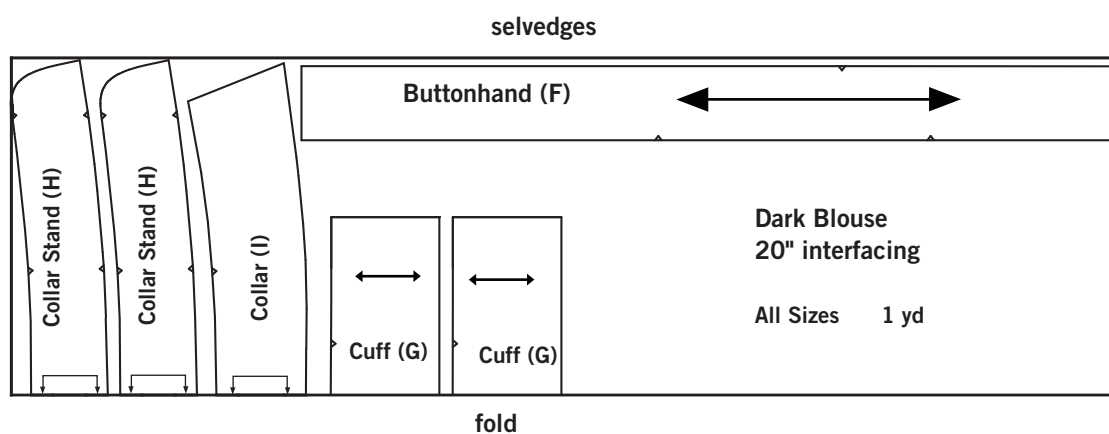
Dark Blouse 45" contrast

All Sizes $\frac{1}{3}$ yds



20" interfacing

All Sizes



GETTING STARTED BASIC TECHNIQUES AND TERMS YOU'LL NEED TO KNOW FOR THE PATTERN YOU HAVE DOWNLOADED.

ASSEMBLING FULL-SIZE PATTERN PRINTOUT

1 | When preparing to print the PDF, make sure that you are printing it at 100% and that there is no scaling. Check the settings for page scaling (should be "None") and check the preview to make sure that you will be printing at full size. Make sure that the box labeled "Auto-Rotate and Center" is unchecked

(instructions apply specifically to Adobe Reader; if using another PDF reader, check for similar settings).

2 | To ensure that the pattern has printed at the correct scale, check the size of the TEST SQUARE. The Test Square should be 2" x 2".

3 | To begin assembling the pattern, cut off or fold the dotted margin around each page.

4 | The pages are numbered in rows, so the first row of pages is numbered 1a, 1b, 1c, etc. Line up the rows and match the dotted lines together so they overlap. Tape the pages together. Use the illustrated guide to match each piece. Once the pattern is complete, find your size, pin the pattern to the fabric, and follow the coordinating line to cut out or trace the pattern.

LAYOUT, MARKING + CUTTING GUIDELINES

1 | Find the lines that correspond to your size and trace the pattern pieces, either on tissue paper or directly onto the fabric, using tracing paper and a tracing wheel.

2 | If you are cutting pattern pieces on the fold or cutting two of the same pattern piece, fold the fabric in half, selvedge to selvedge, with right sides together. Note that this technique is not appropriate for some fabrics so check the project instructions if you are unsure.

3 | Lay the pattern pieces on the fabric as close together as possible. Double-check that all pattern pieces to be cut "on the fold" are placed on the fold.

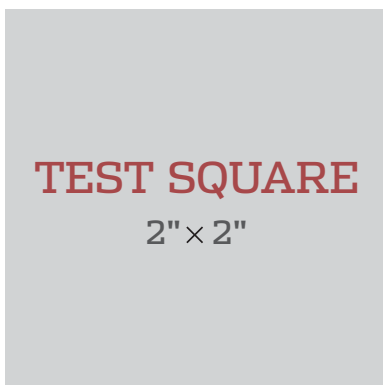
4 | Make sure all pattern pieces are placed on the fabric with the grainline running parallel to the lengthwise grain unless a crosswise or bias grainline is present.

5 | Copy all pattern markings onto the wrong side of the fabric unless otherwise noted.

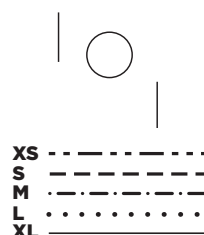
6 | Read through all cutting instructions listed in the project instructions for directions on how many pattern pieces to cut out of your fabric and interfacing.

7 | Use weights to hold the pattern pieces down and use pins to secure the corners as needed.

8 | Cut the pieces slowly and carefully.



PATTERN SYMBOLS + MARKINGS



↓ place on fold ↓

BUTTON + BUTTONHOLE

PLACEMENT MARKS Solid lines indicate buttonholes. A large open circle is the button symbol and shows placement.

CUTTING LINES Multisize patterns have different cutting lines for each size.

PLACE ON FOLD BRACKET This is a grainline marking with arrows pointing to the edge of the pattern. Place on the fold of the fabric so that your finished piece will be twice the size of the pattern piece, without adding a seam.

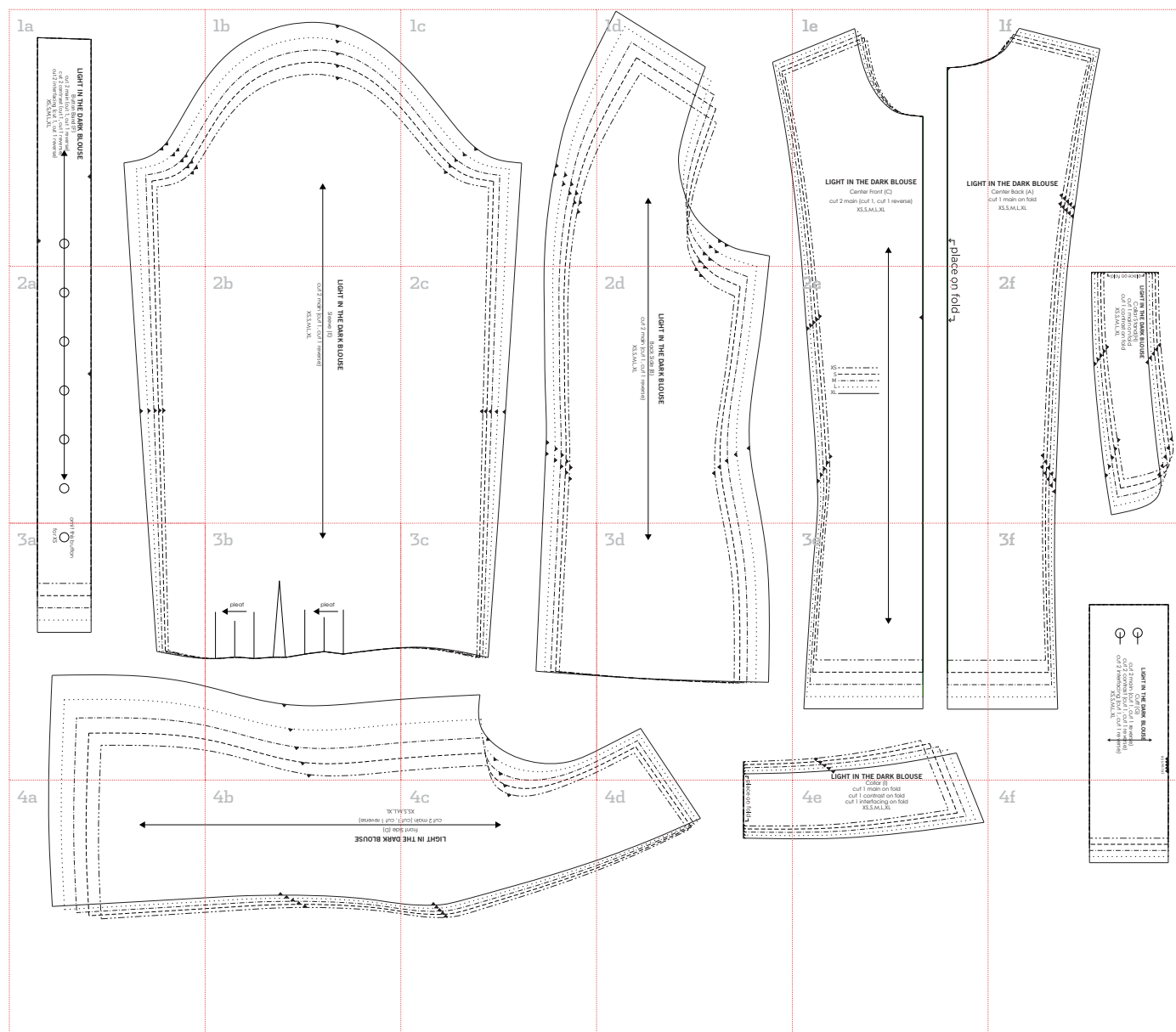
GRAINLINE The double-ended arrow should be parallel to the lengthwise grain or fold unless specifically marked as crosswise. Bias grainlines will be diagonal.

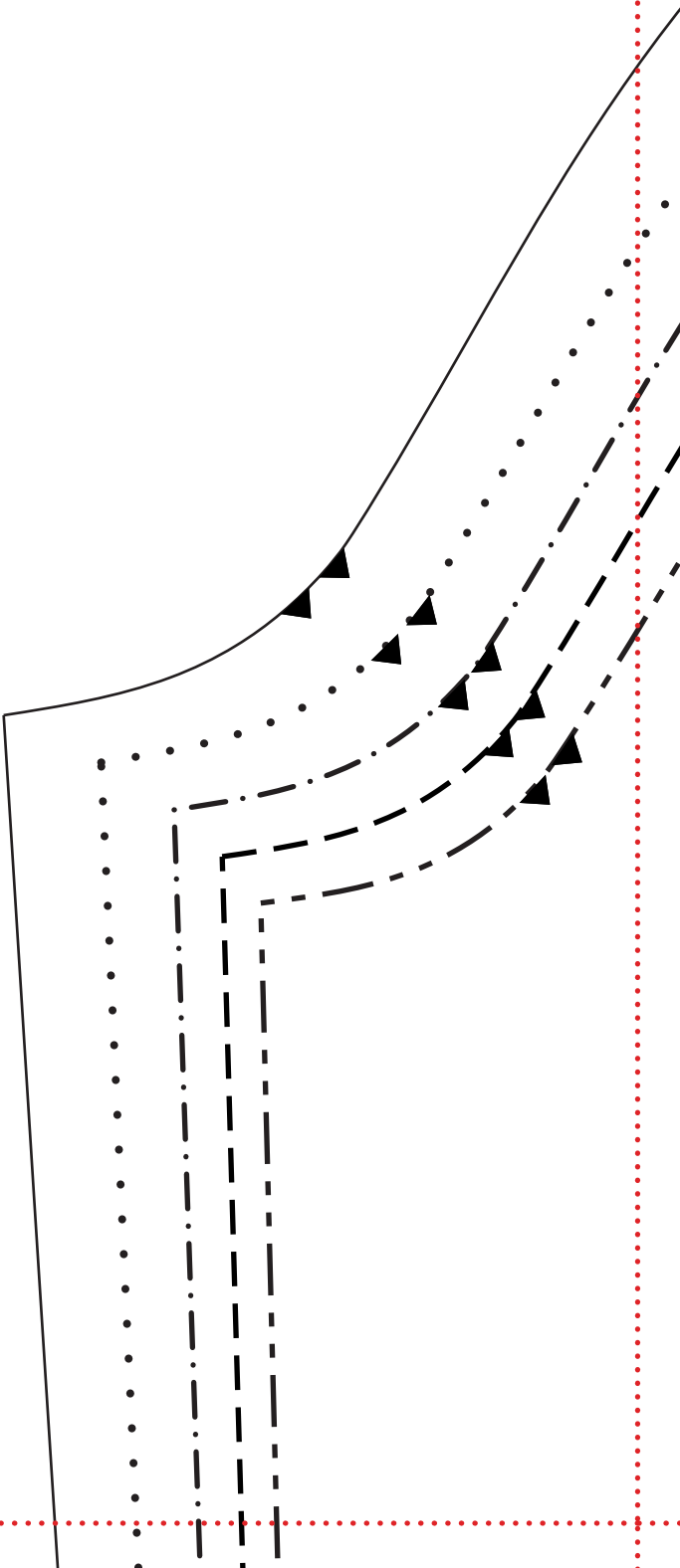
NOTCHES Notches are triangle-shaped symbols used for accurately matching seams. Pieces to be joined will have corresponding notches.

DARTS Dashed lines and dots mark darts. The dashed lines show where the stitching will be, and the dot shows the position of the dart point (signaling the point, at the end of the dart, where your stitching should end).

PATTERN DOTS Filled circles indicate that a mark needs to be made (often on the right side of the fabric) for placement of elements such as a pocket or a dart point. Mark by punching through the pattern paper only, then mark on the fabric through the hole.

SLASH MARKS A dashed line (sometimes appearing with pattern dots) indicates an area to be slashed. Further instructions for making the slash will be included in the pattern instructions.





LIGHT IN THE DARK BLOUSE

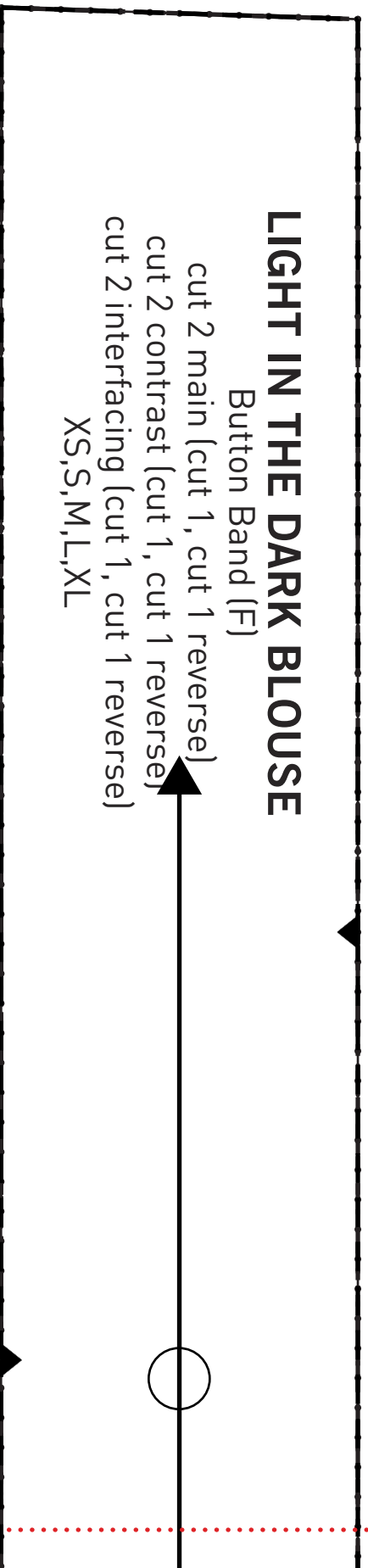
Button Band (F)

cut 2 main (cut 1, cut 1 reverse)

cut 2 contrast (cut 1, cut 1 reverse)

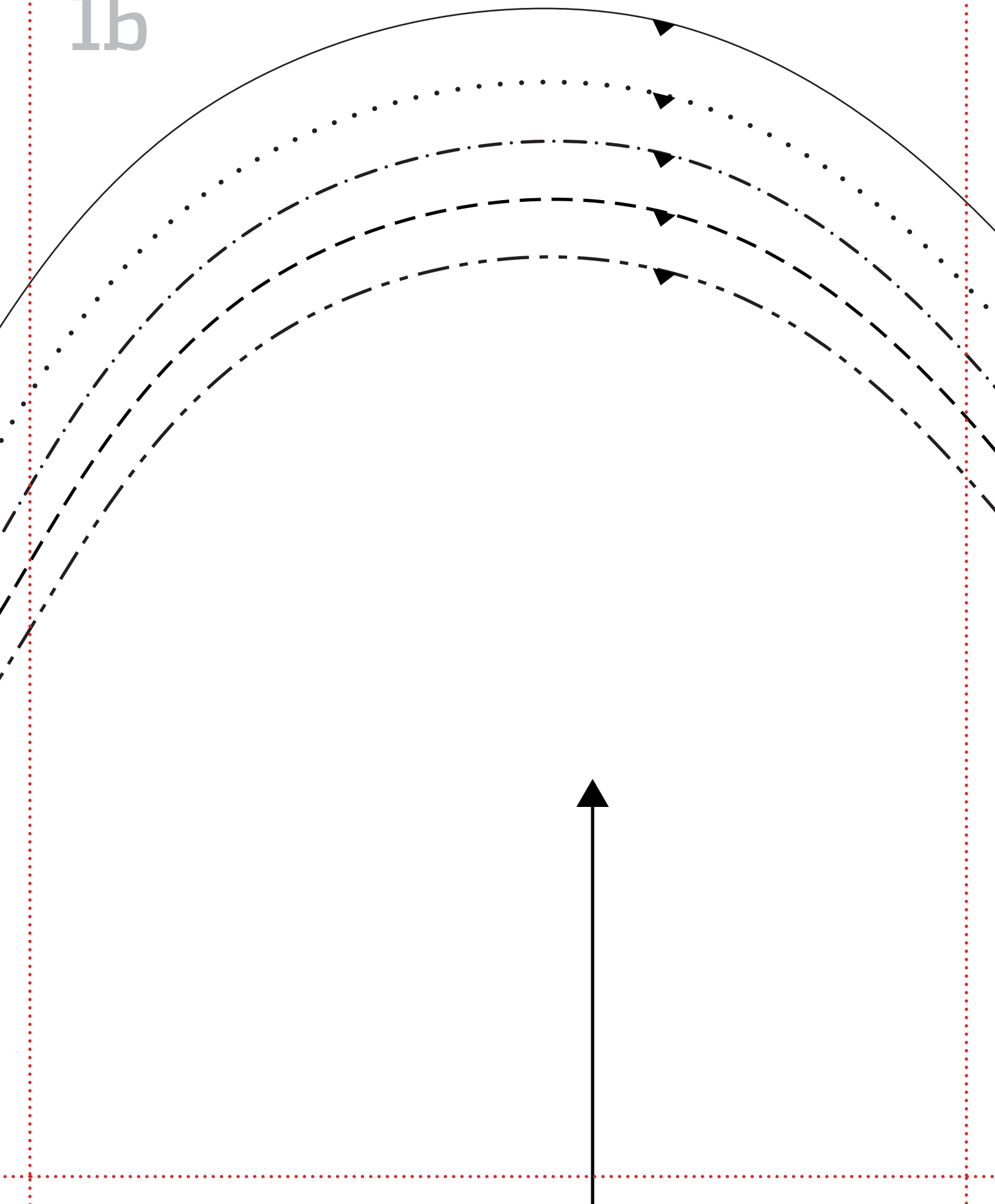
cut 2 interfacing (cut 1, cut 1 reverse)

XS,S,M,L,XL

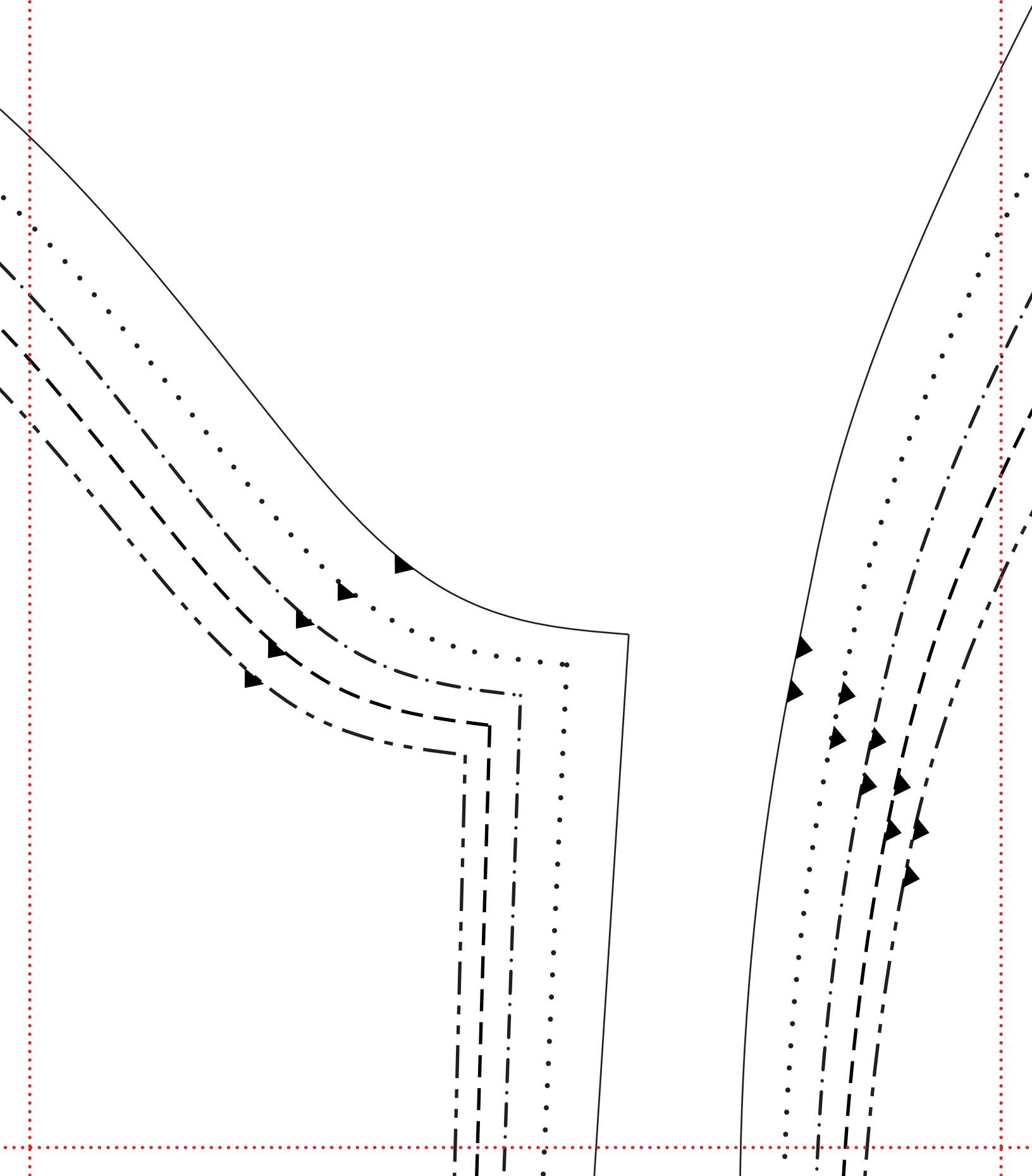


1a

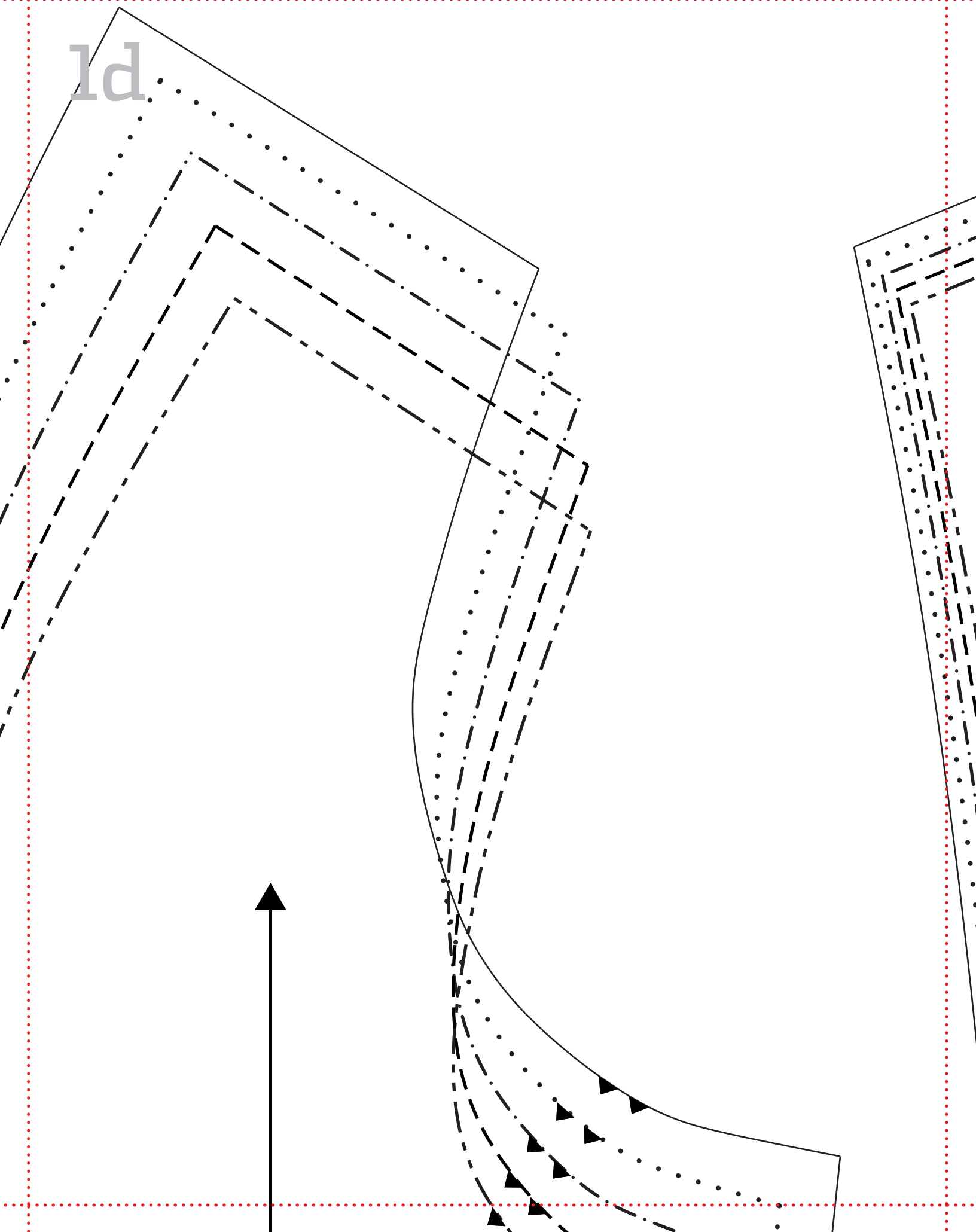
1b



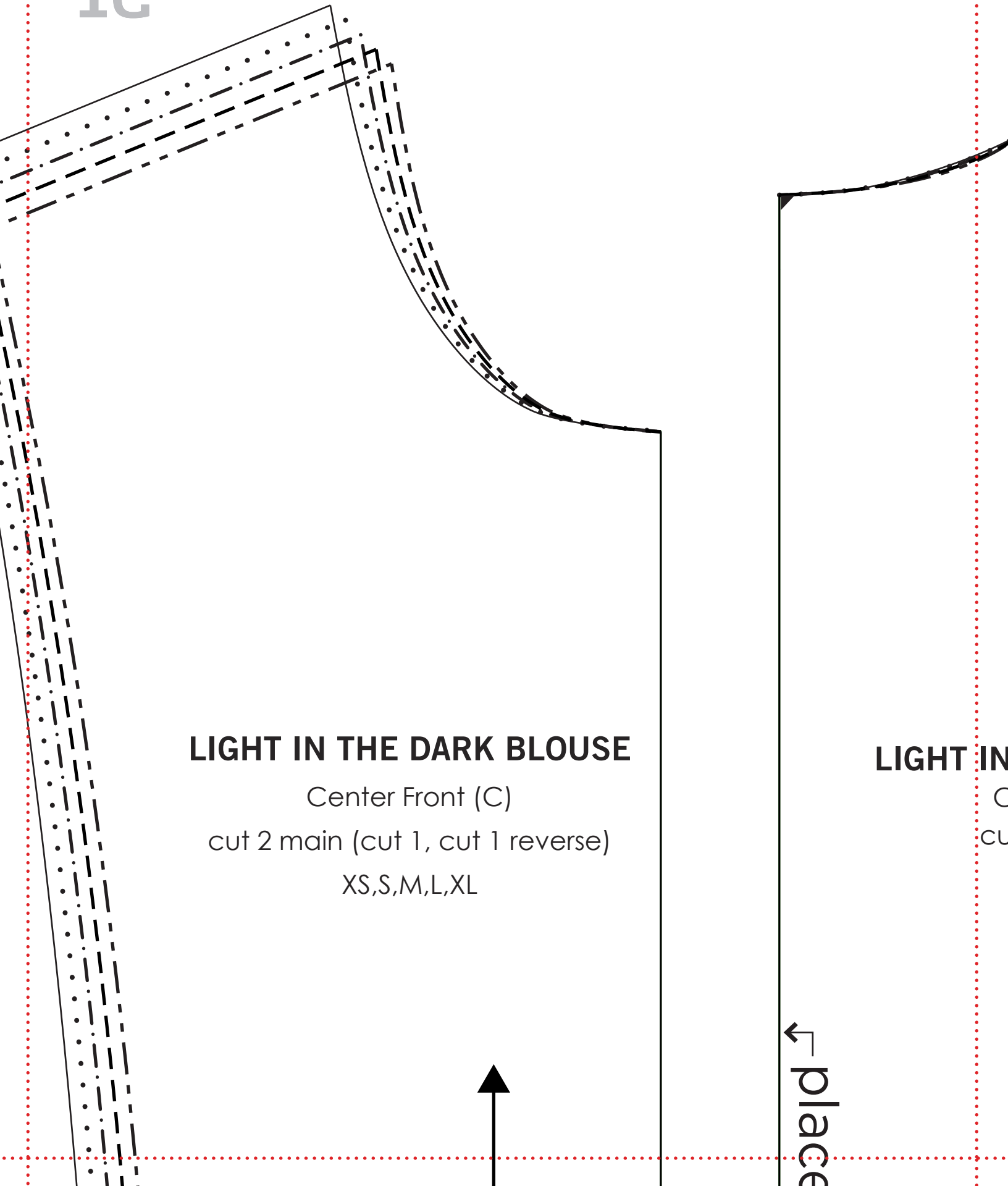
1c



1d



1e



LIGHT IN THE DARK BLOUSE

Center Front (C)

cut 2 main (cut 1, cut 1 reverse)

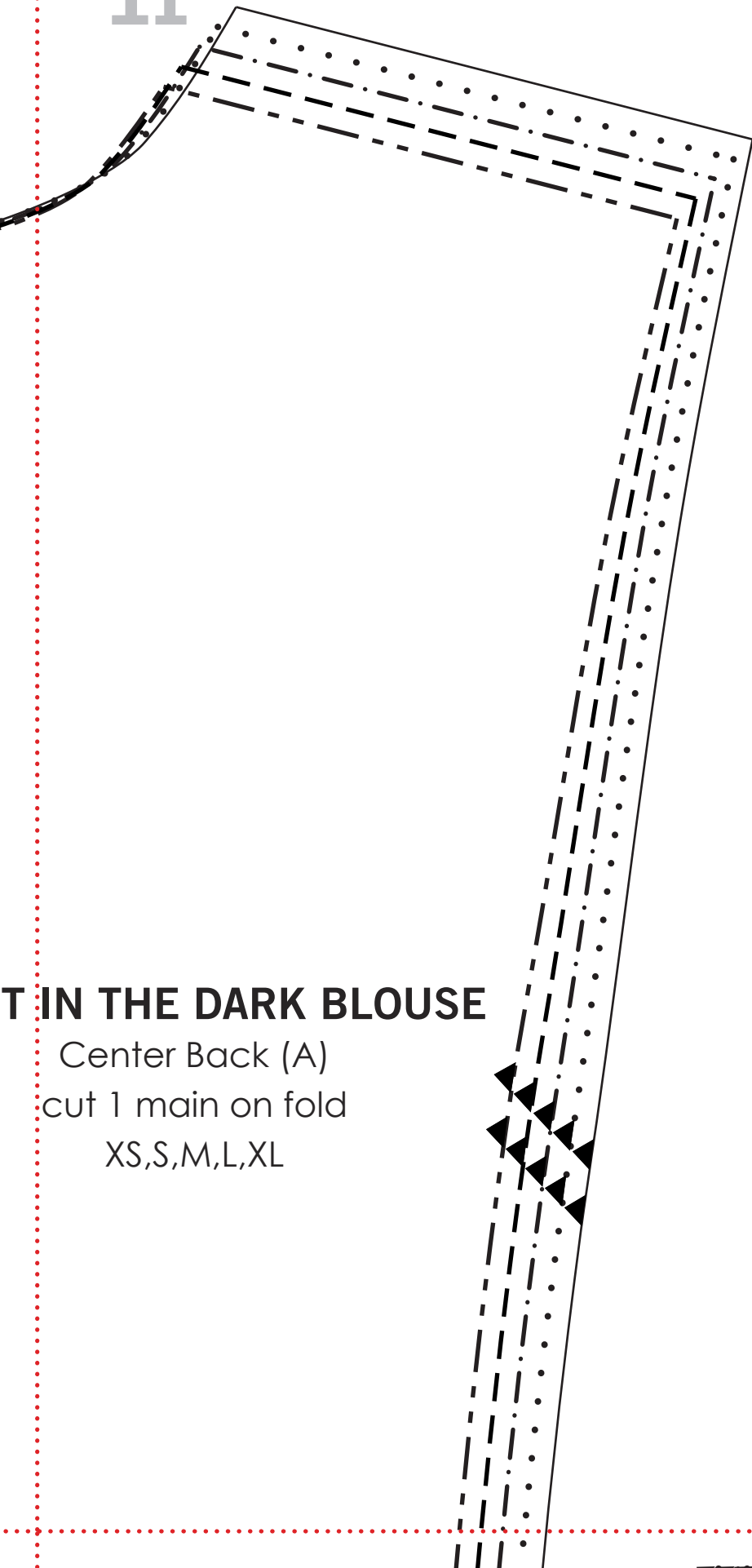
XS,S,M,L,XL

LIGHT IN

C
cu

place

1f



T IN THE DARK BLOUSE

Center Back (A)
cut 1 main on fold
XS,S,M,L,XL

2a



omit



LIGHT IN THE DARK BLOUSE

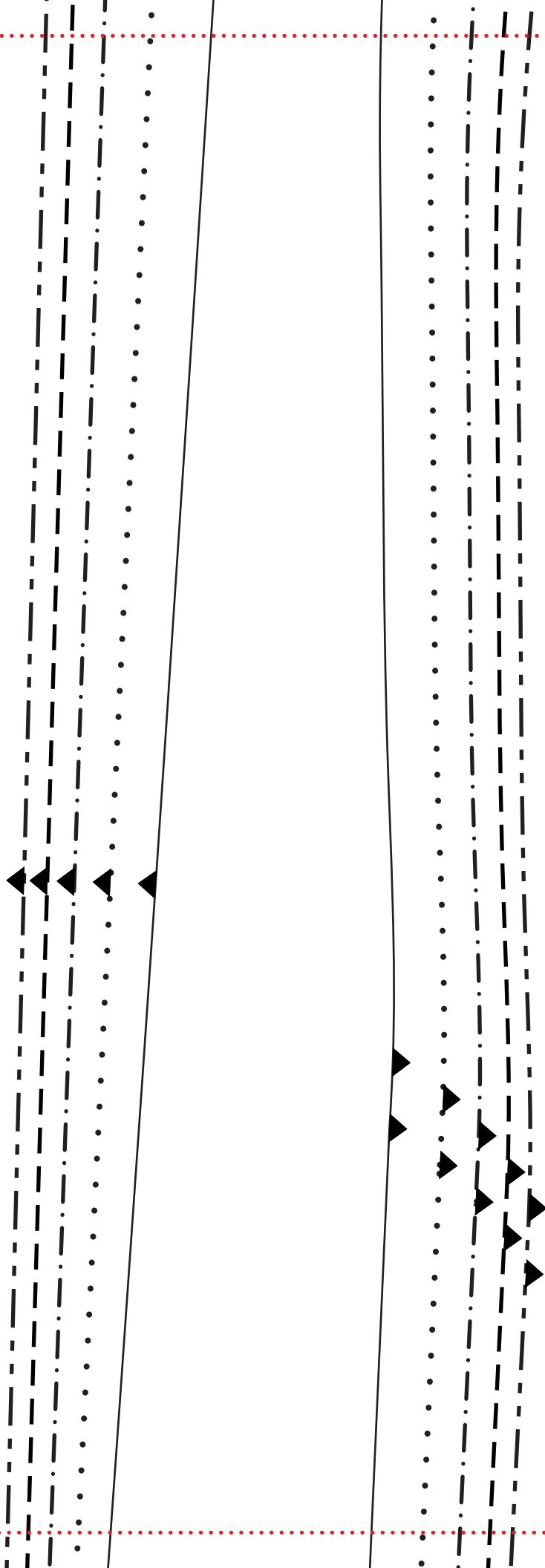
Sleeve (E)

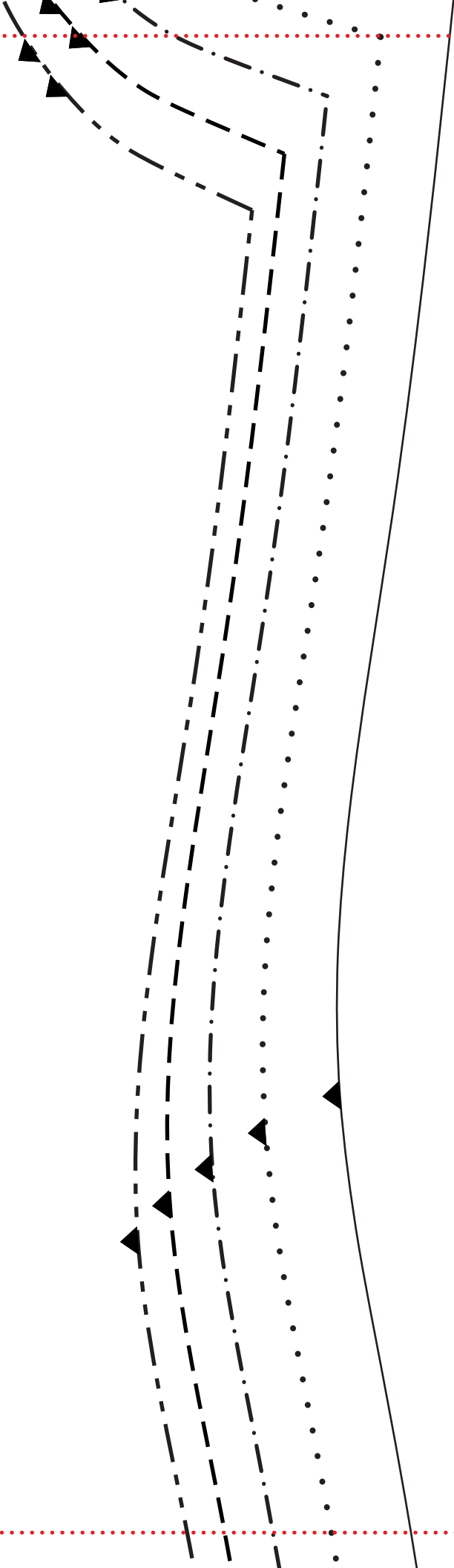
cut 2 main (cut 1, cut 1 reverse)

XS,S,M,L,XL

2b

2c





LIGHT IN THE DARK BLOUSE

Back Side (B)

cut 2 main (cut 1, cut 1 reverse)

XS,S,M,L,XL

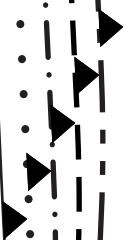
2d

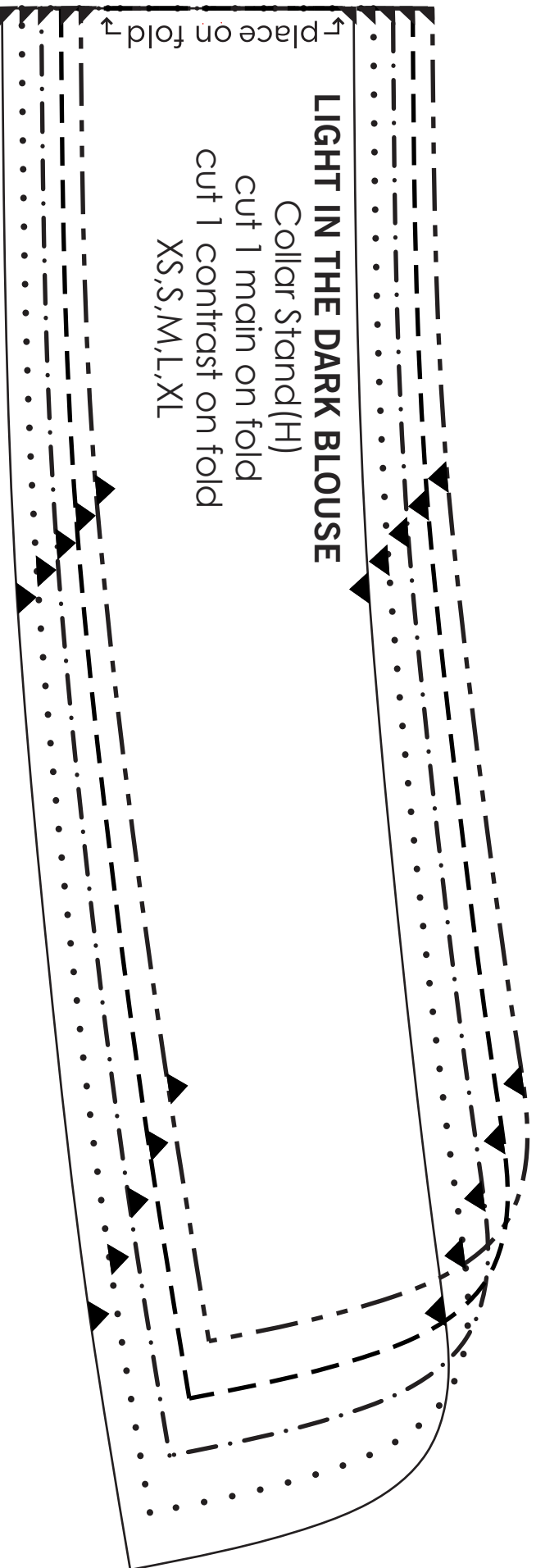
Place on fold →



XS - - - - -
S - - - - -
M . - . - . - . - . - .
L
XL - - - - -

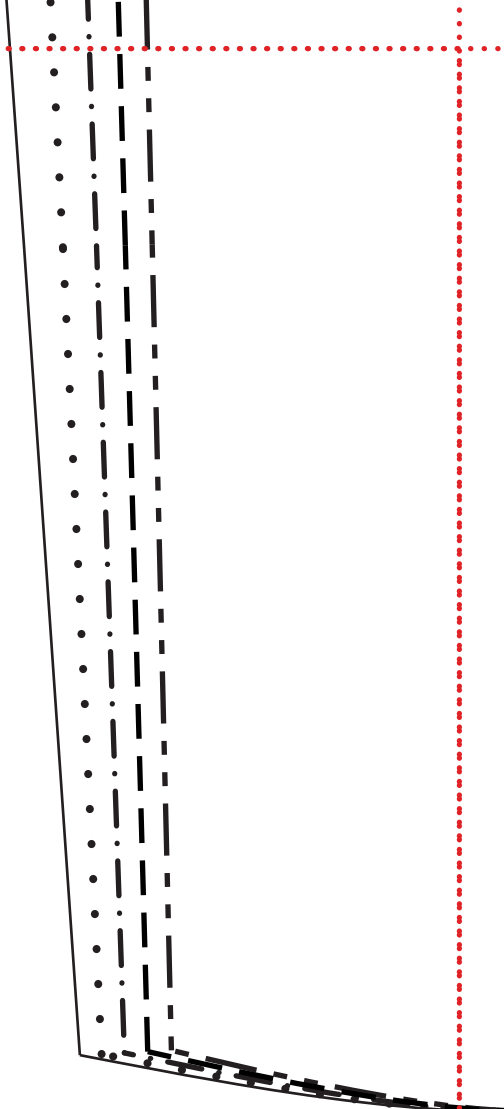
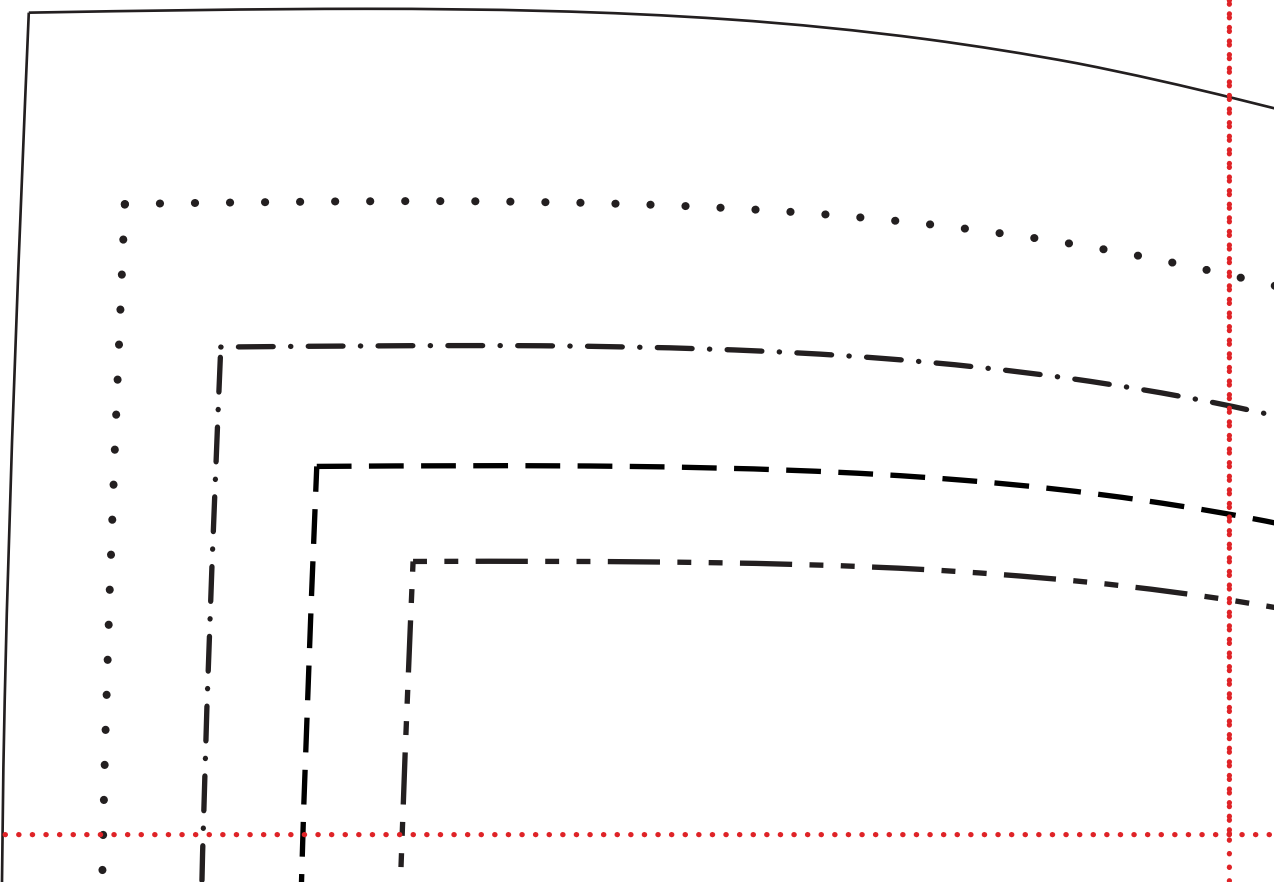
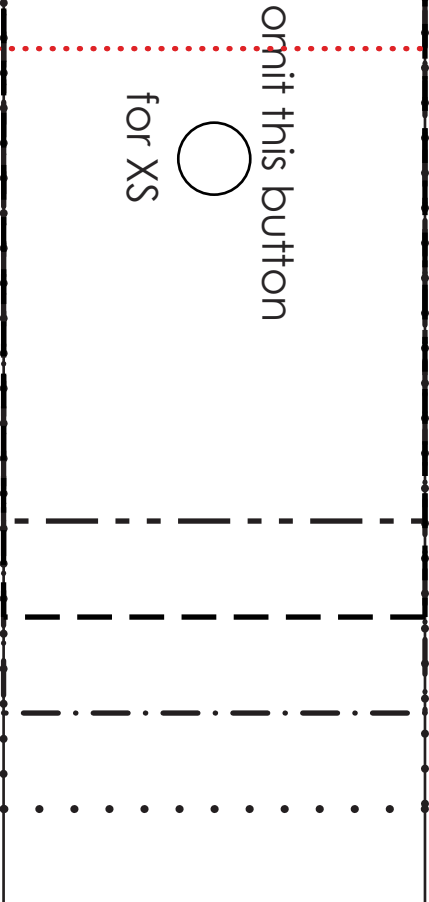
2e





3a

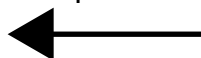
omit this button
for XS



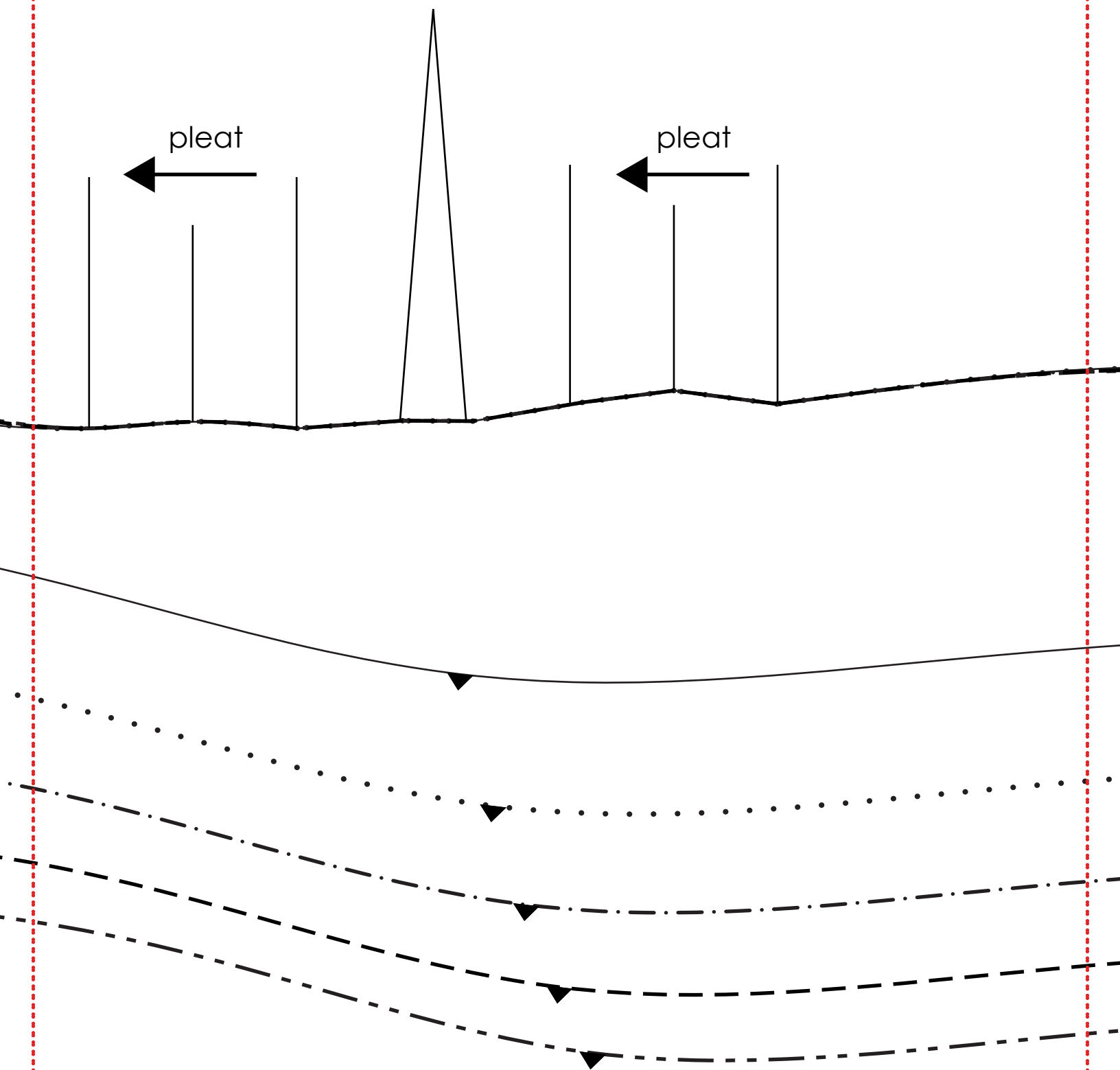
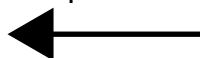
3b



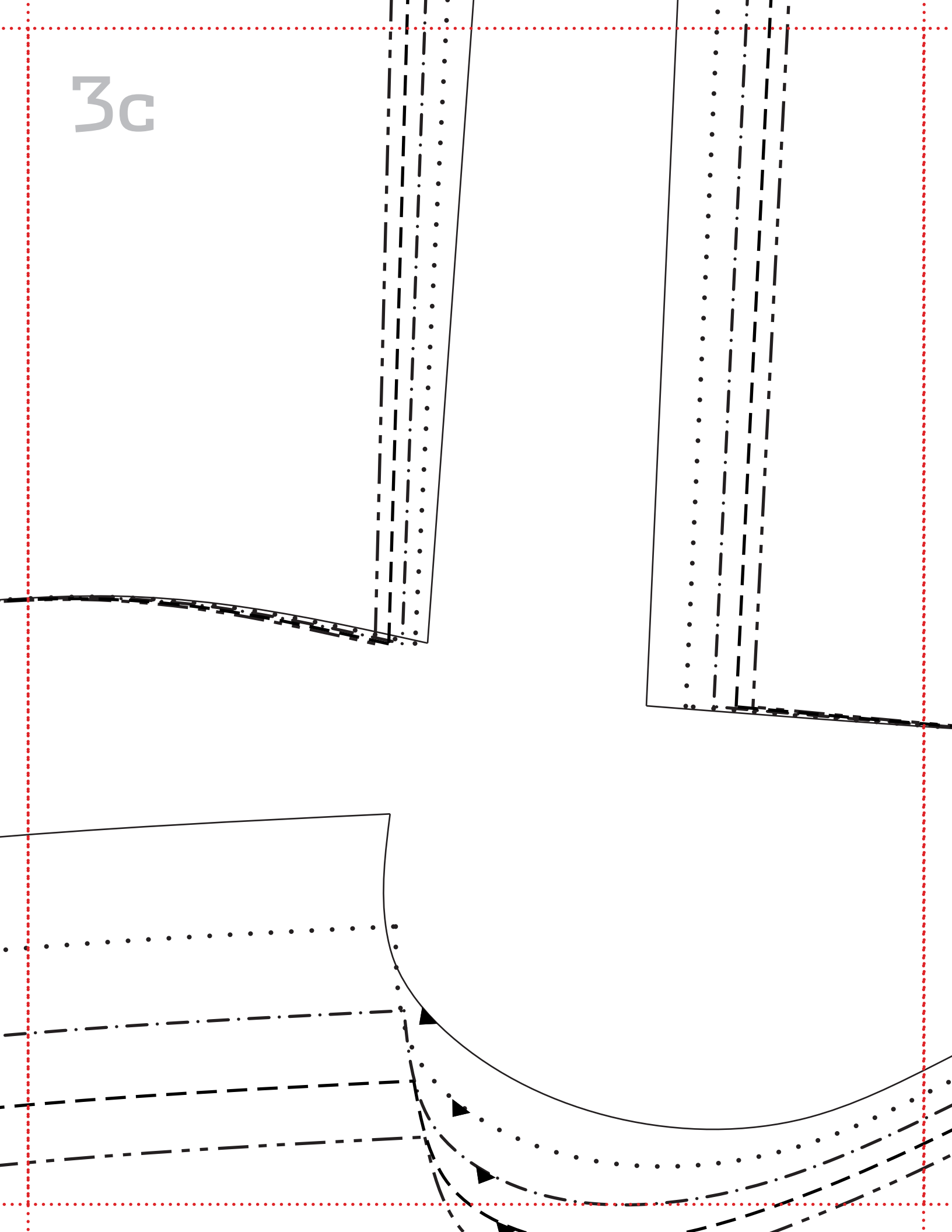
pleat



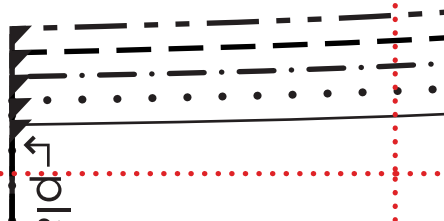
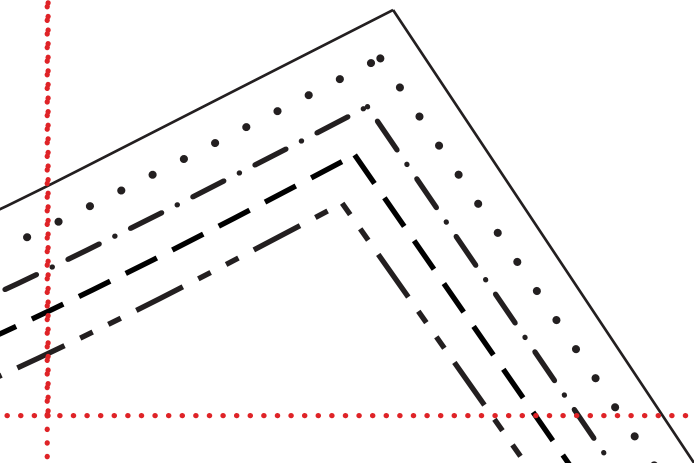
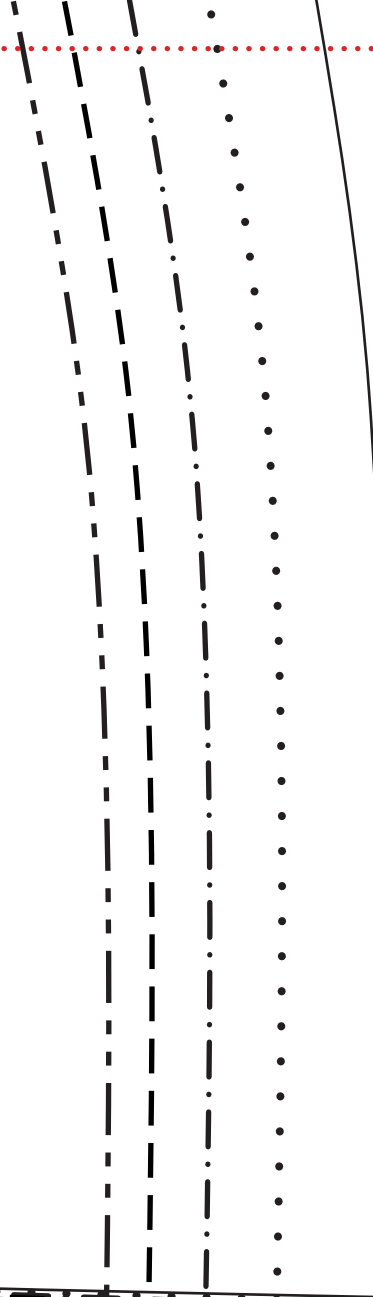
pleat



3c

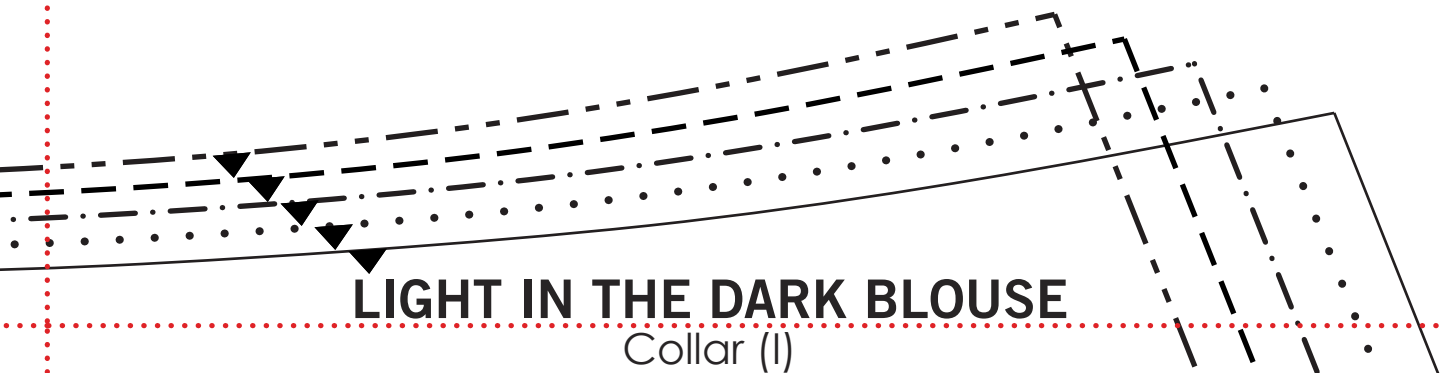
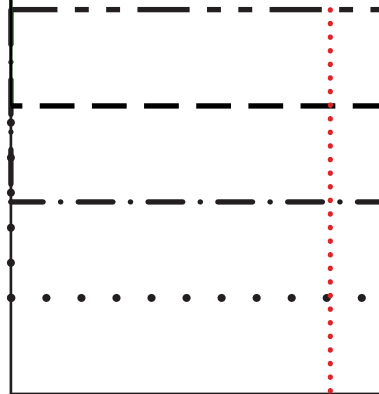
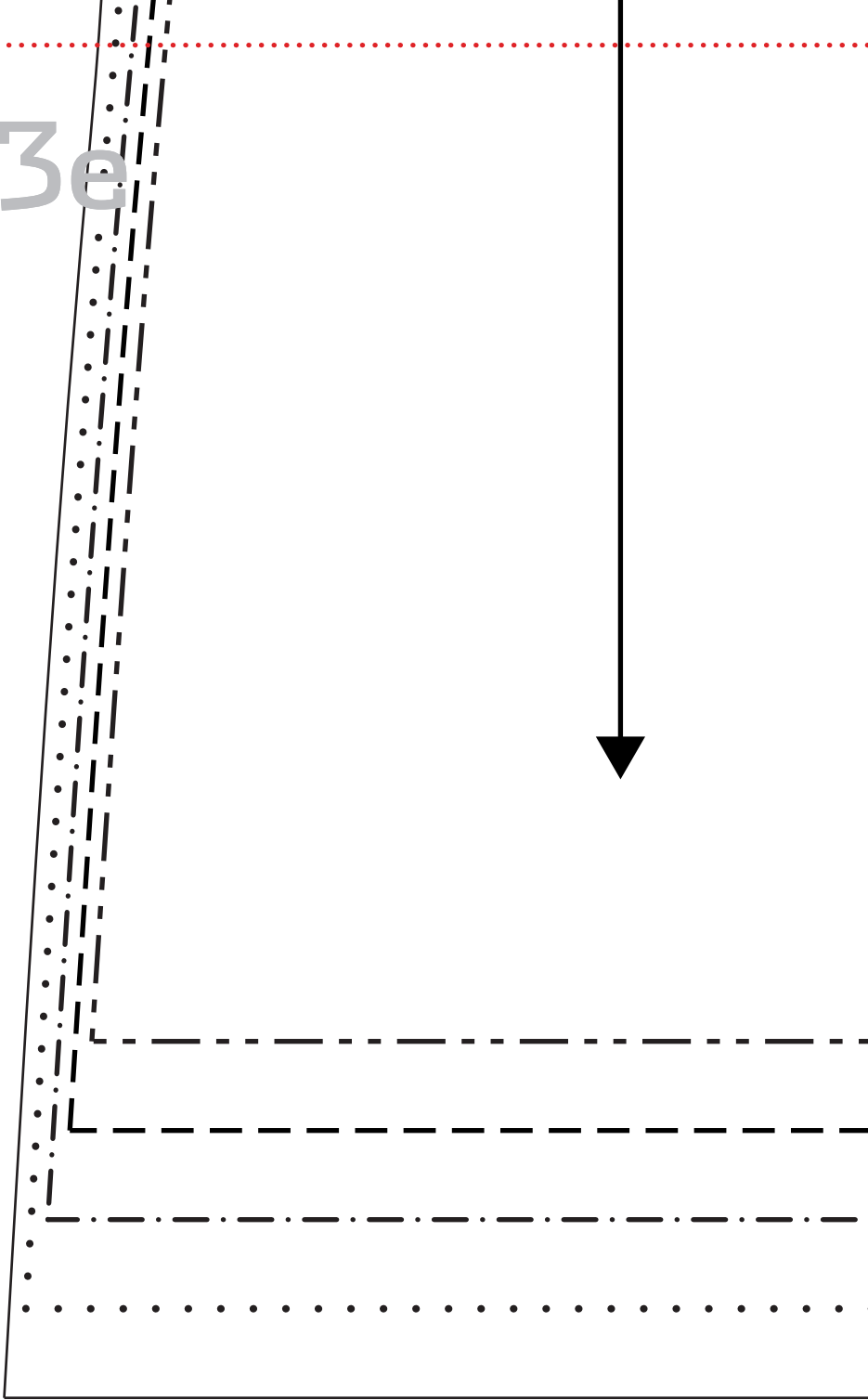


3d



1d

3e



LIGHT IN THE DARK BLOUSE

Collar (I)

LIGHT IN THE DARK BLOUSE

Cuff (G)

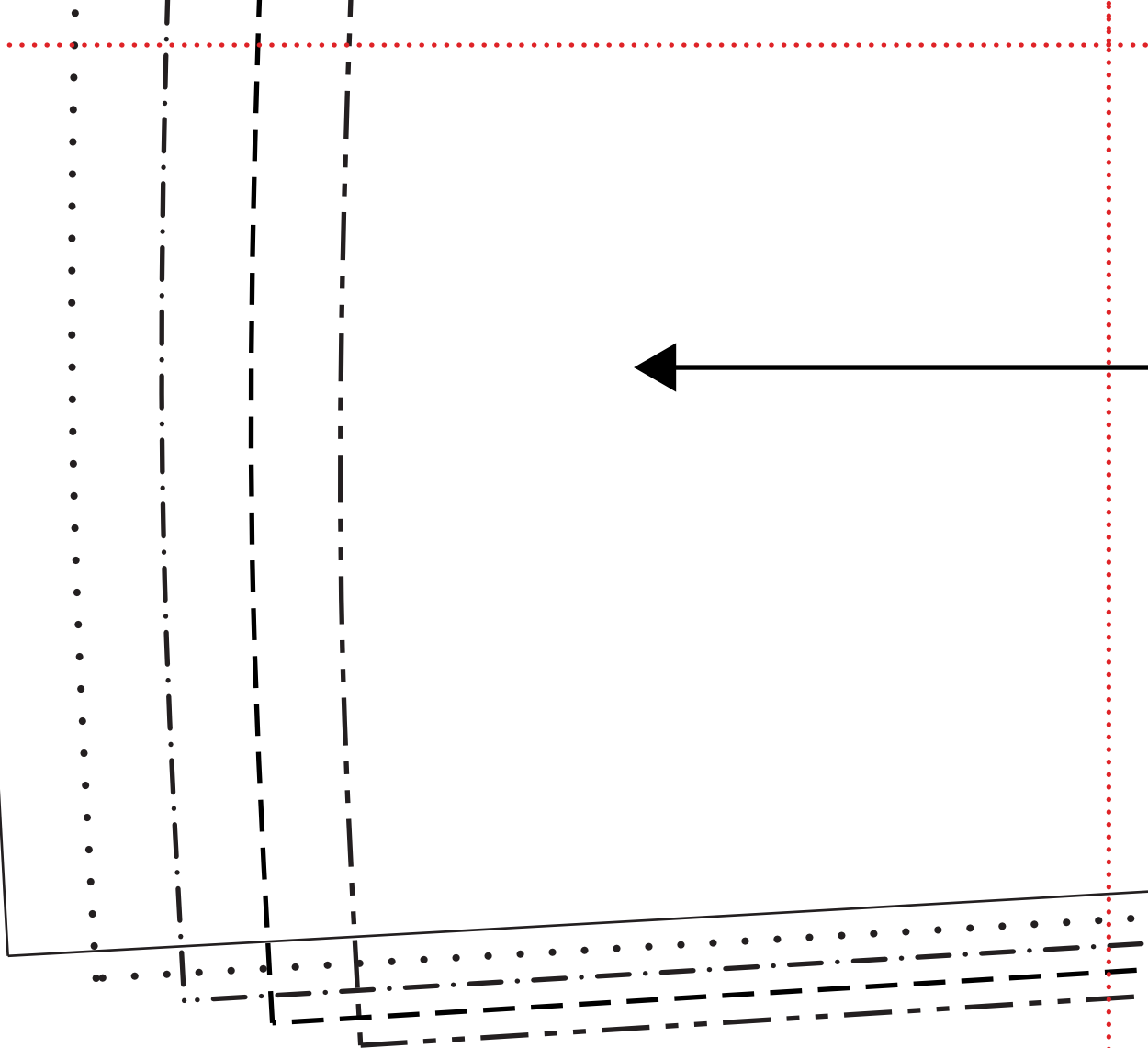
cut 2 main (cut 1, cut 1 reverse)

cut 2 contrast (cut 1, cut 1 reverse)

cut 2 interfacing (cut 1, cut 1 reverse)

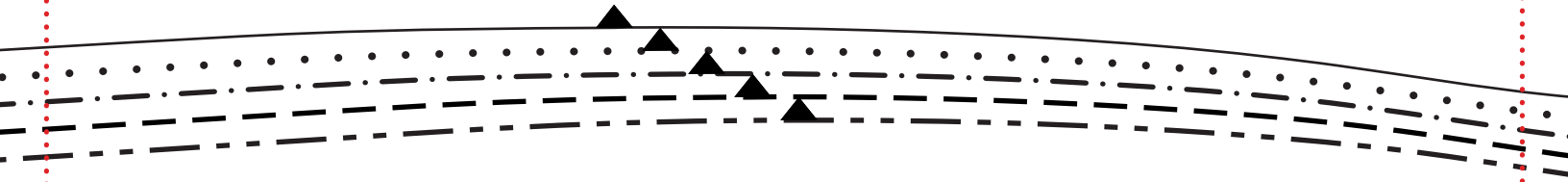
XS,S,M,L,XL

4a



4b

E DARK BLOUSE
t Side (D)
ut: 1, cut 1 reverse)
S,M,L,XL



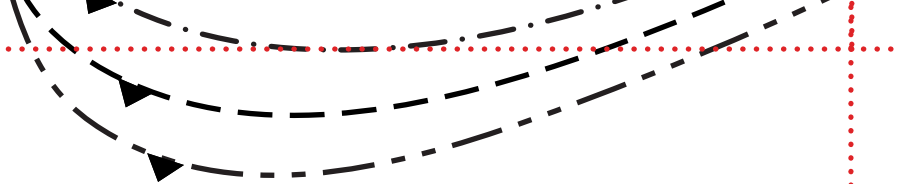
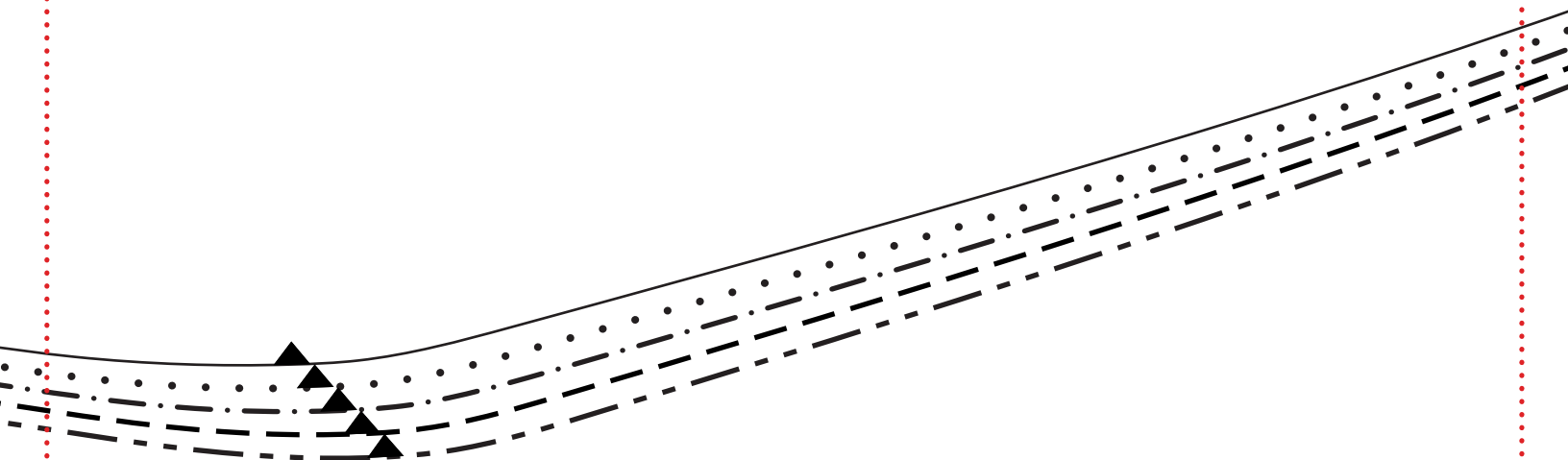
4c

XS,S,M,L

cut 2 main (cut 1,

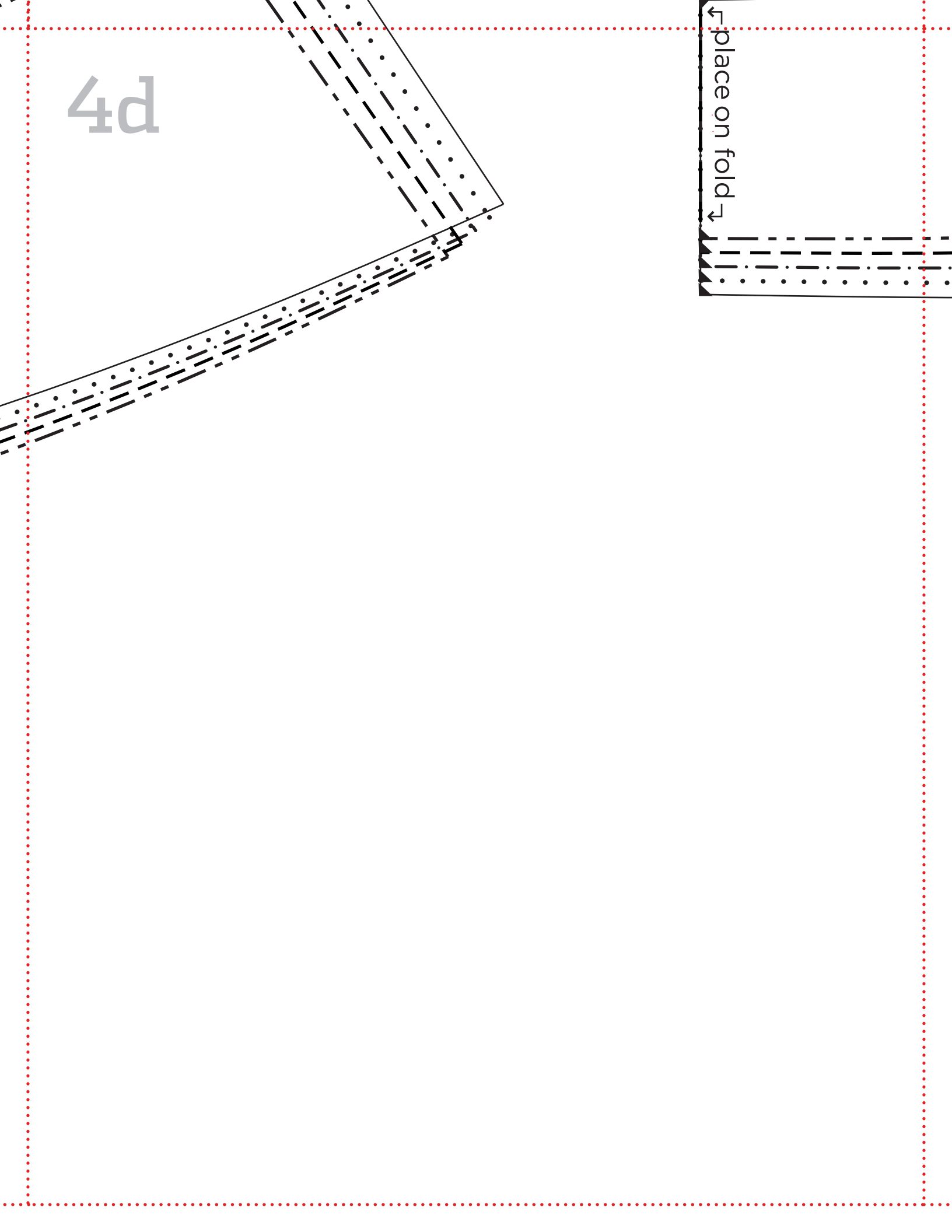
Front Side

LIGHT IN THE D



4d

place on fold ↴



LIGHT IN THE DARK BLOUSE

Collar (I)

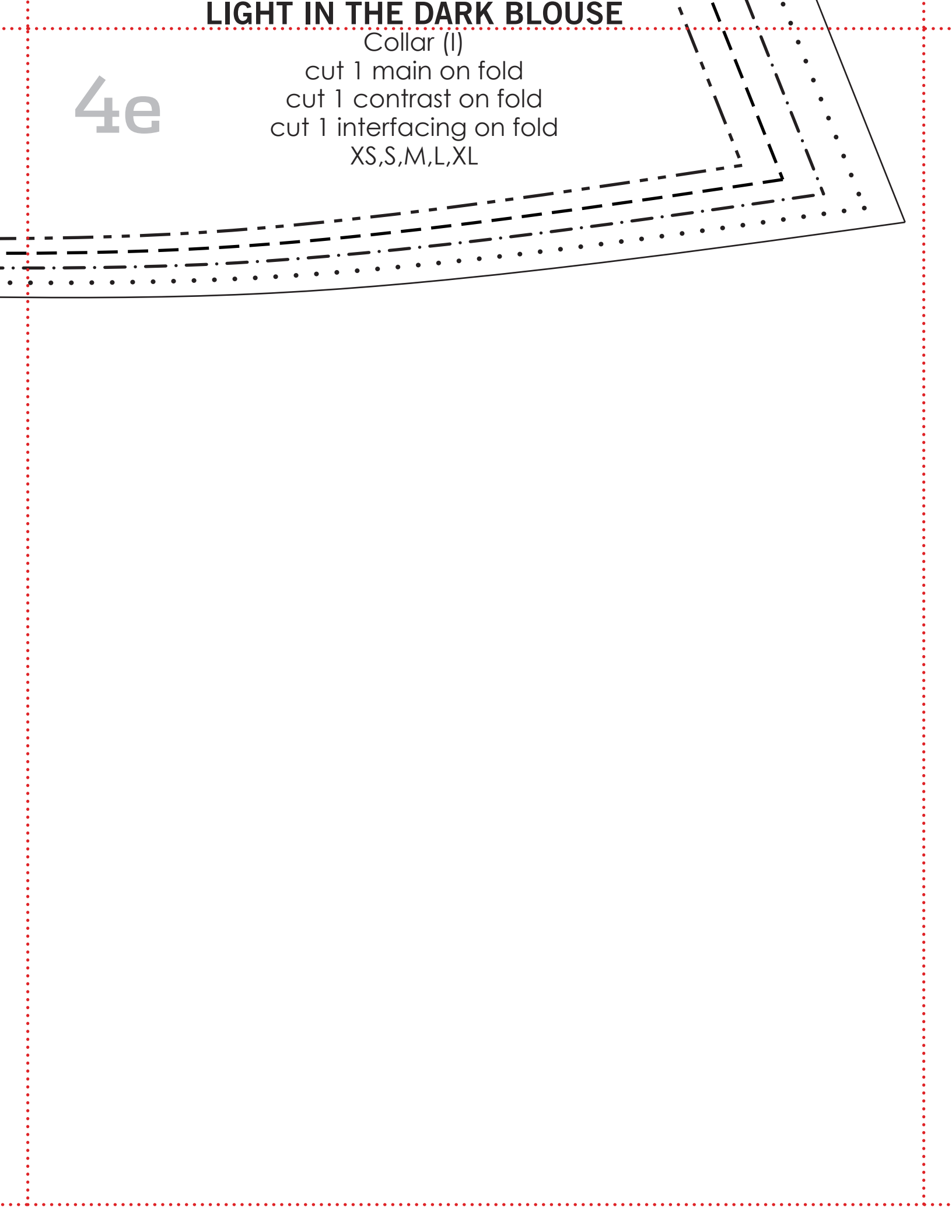
cut 1 main on fold

cut 1 contrast on fold

cut 1 interfacing on fold

XS,S,M,L,XL

4e



4f

