



Square style dress

Size: 156cm (around chest),
83cm (dress length)

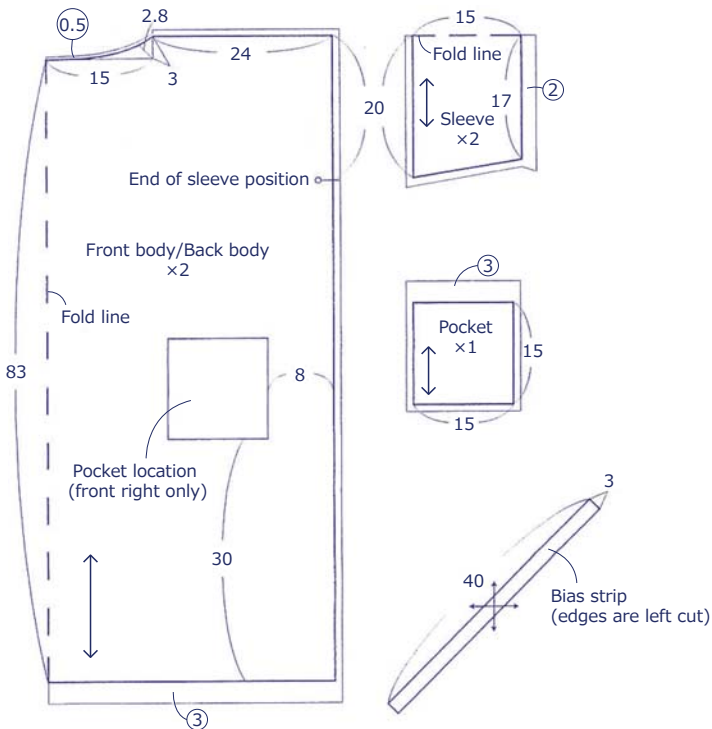
Materials

□ Outer/front Fabric : 200cm (110cm width)

Fabric shown for this sample: echino kalmia JG95900-903 (B)

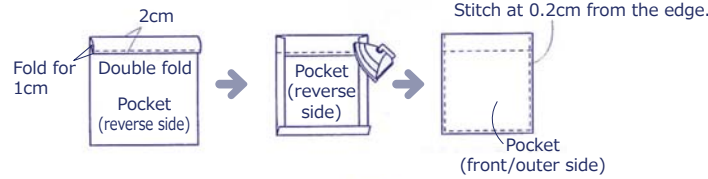
Pattern and Cutting layout

All measurements are in centimeters (cm).
Numbers in circles denote seam allowance.
All seam allowances 1cm unless otherwise stated.

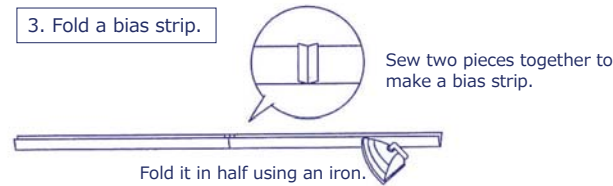


Instructions

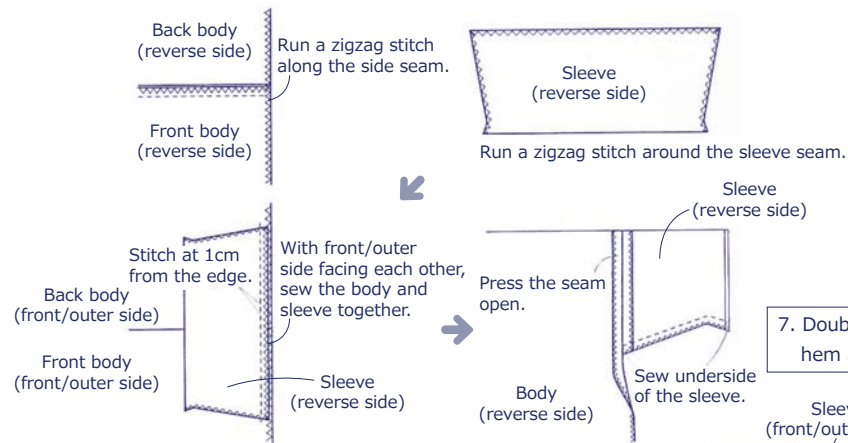
1. Prepare a pocket and attach it to the front body.



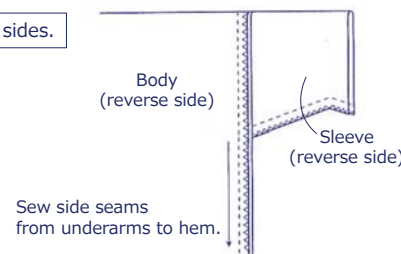
3. Fold a bias strip.



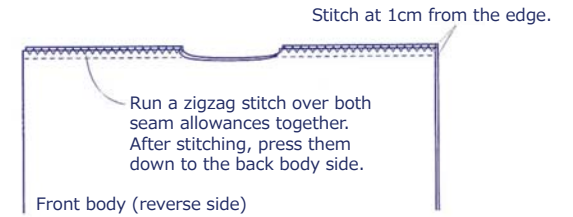
5. Attach the sleeve and sew under the sleeve.



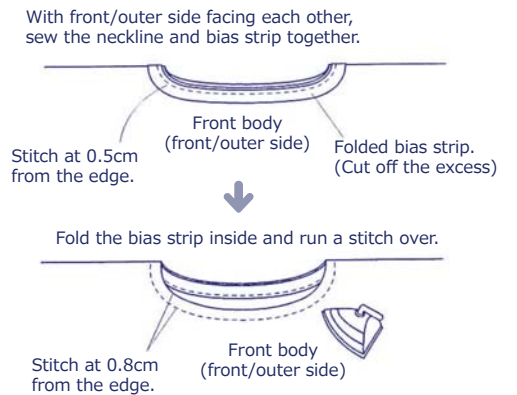
6. Sew the sides.



2. With front/outer side facing each other, sew front and back body.



4. Attach the bias strip to a neckline.



7. Double fold the cuff and hem and stitch to finish.

