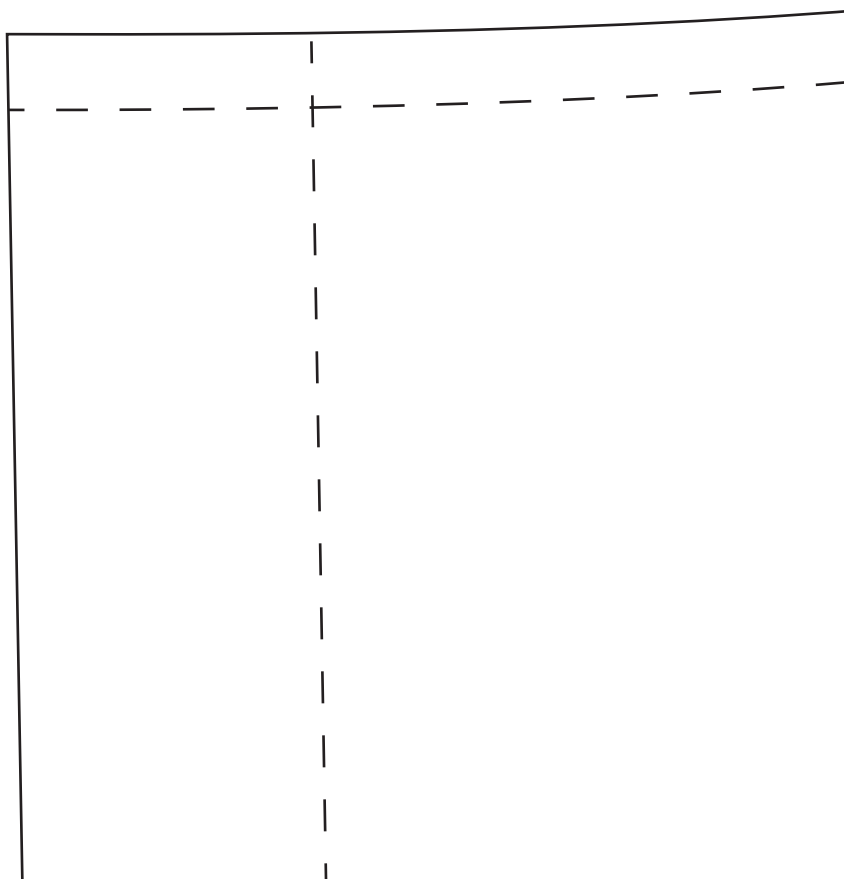
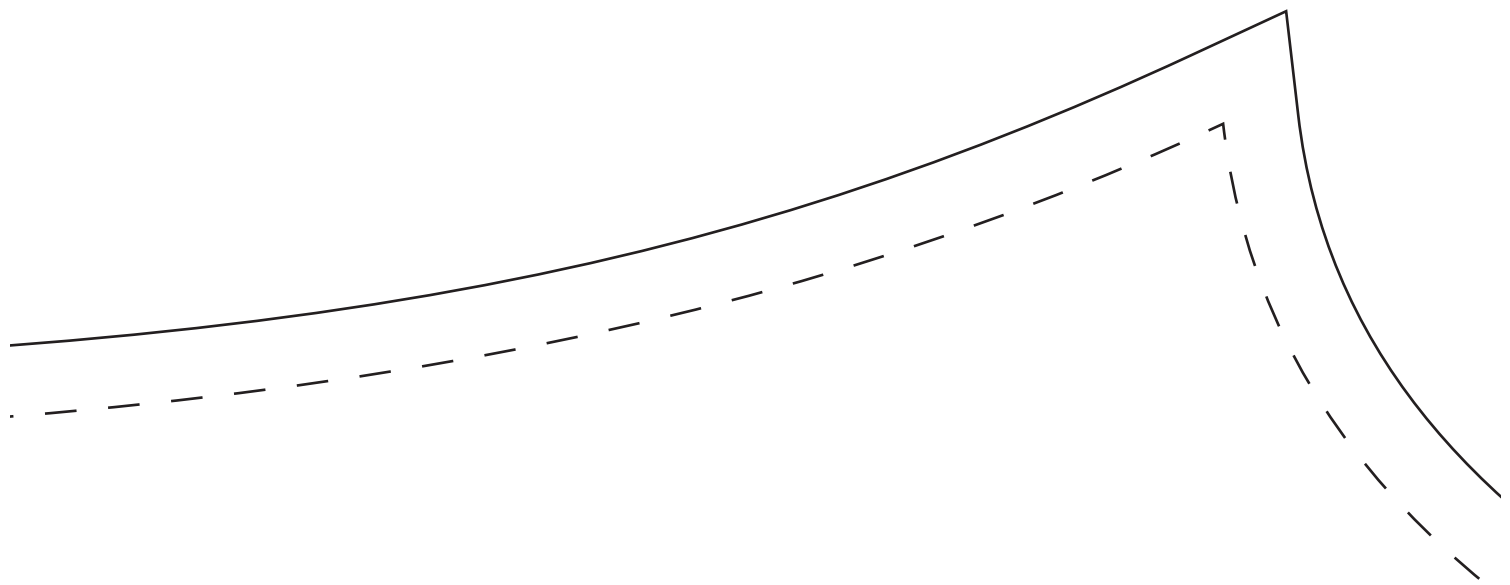


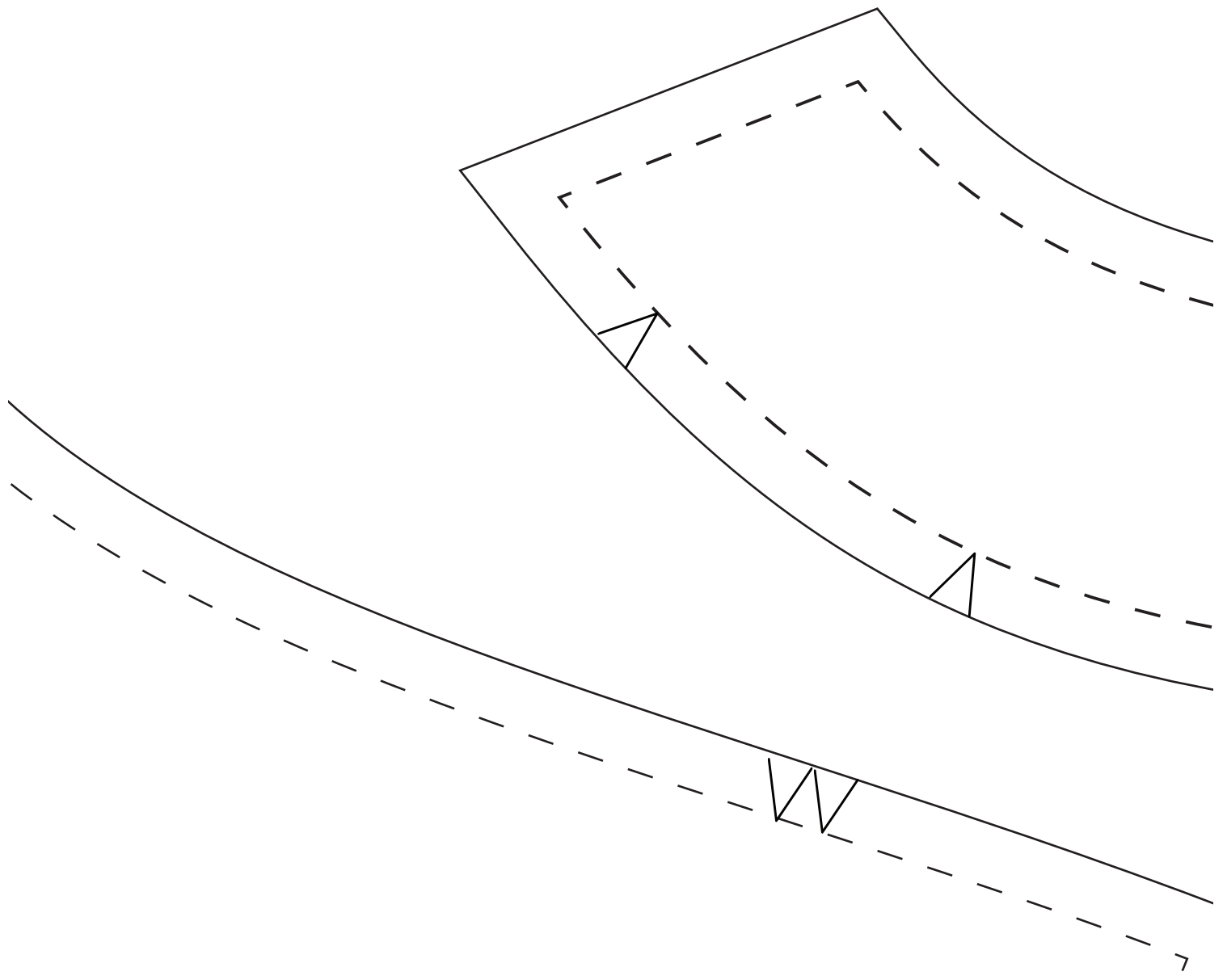


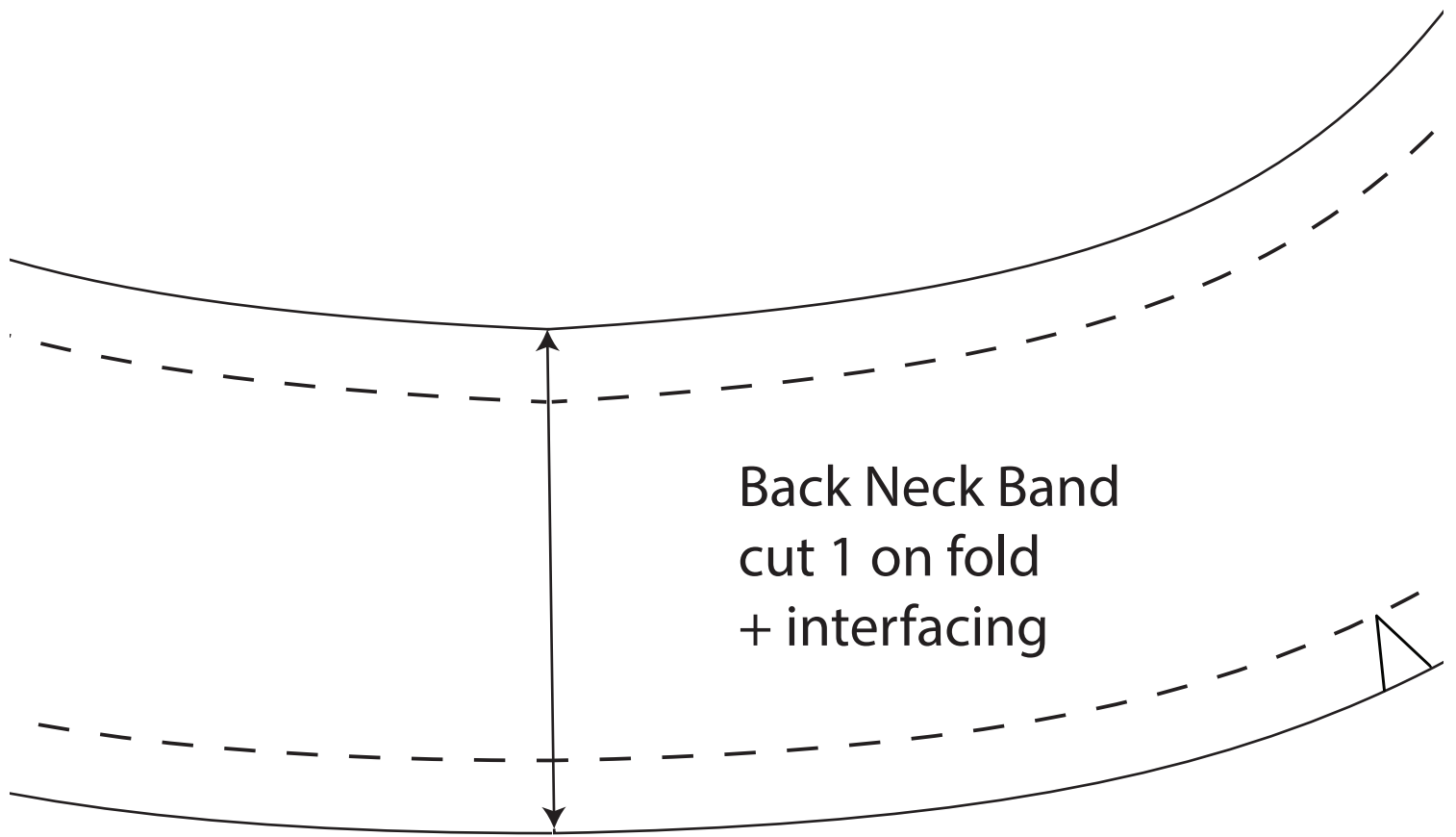
SLOUCHY SMOCK DRESS

Perfect to wear layered over a thin roll-neck tee and a pair of leggings or jeans, you can whip up this casual and comfy dress in an afternoon. By Jeanne Spaziani



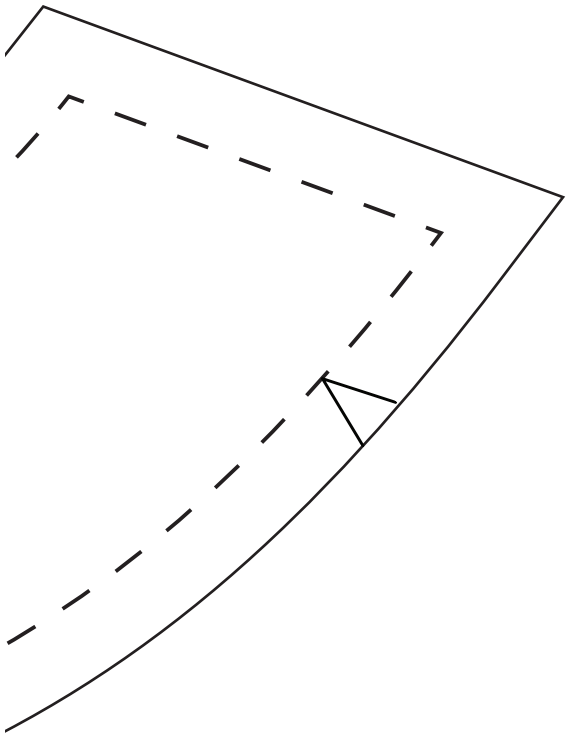






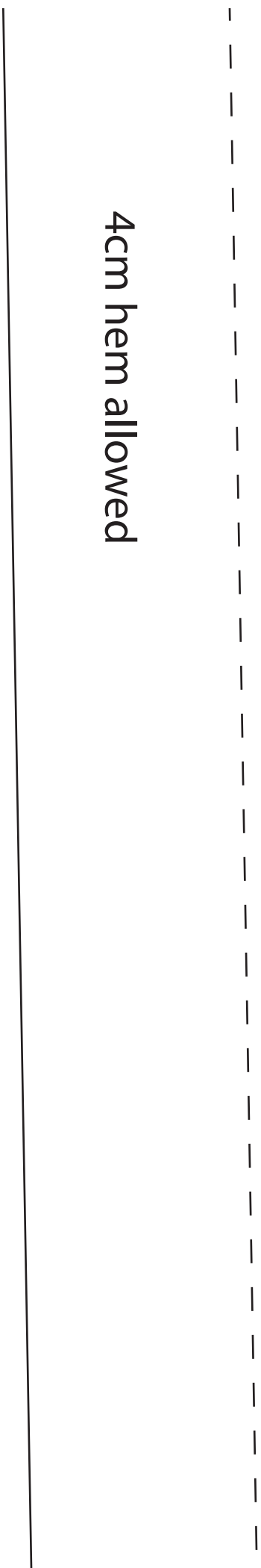
Back Neck Band
cut 1 on fold
+ interfacing





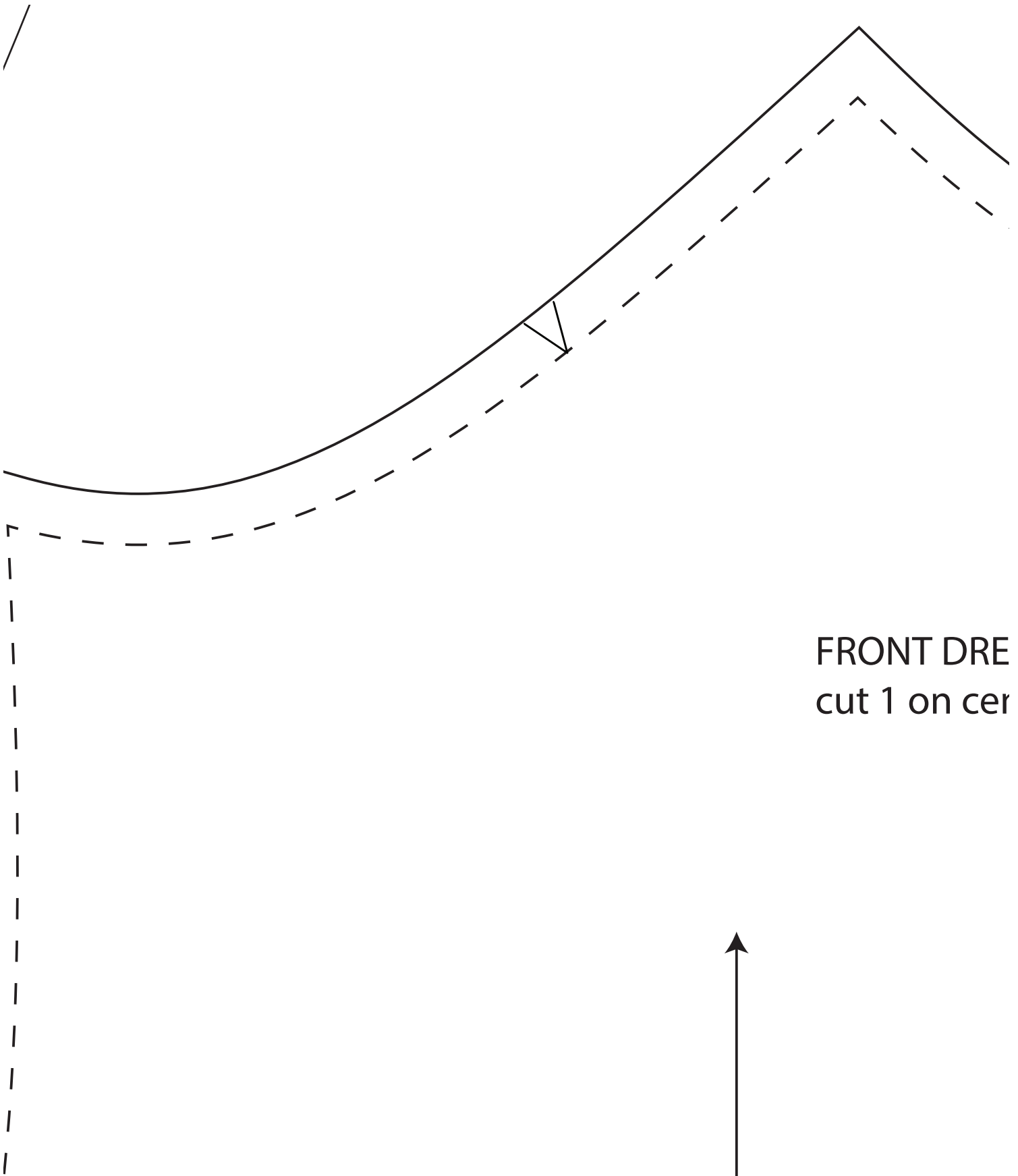


4cm hem allowed

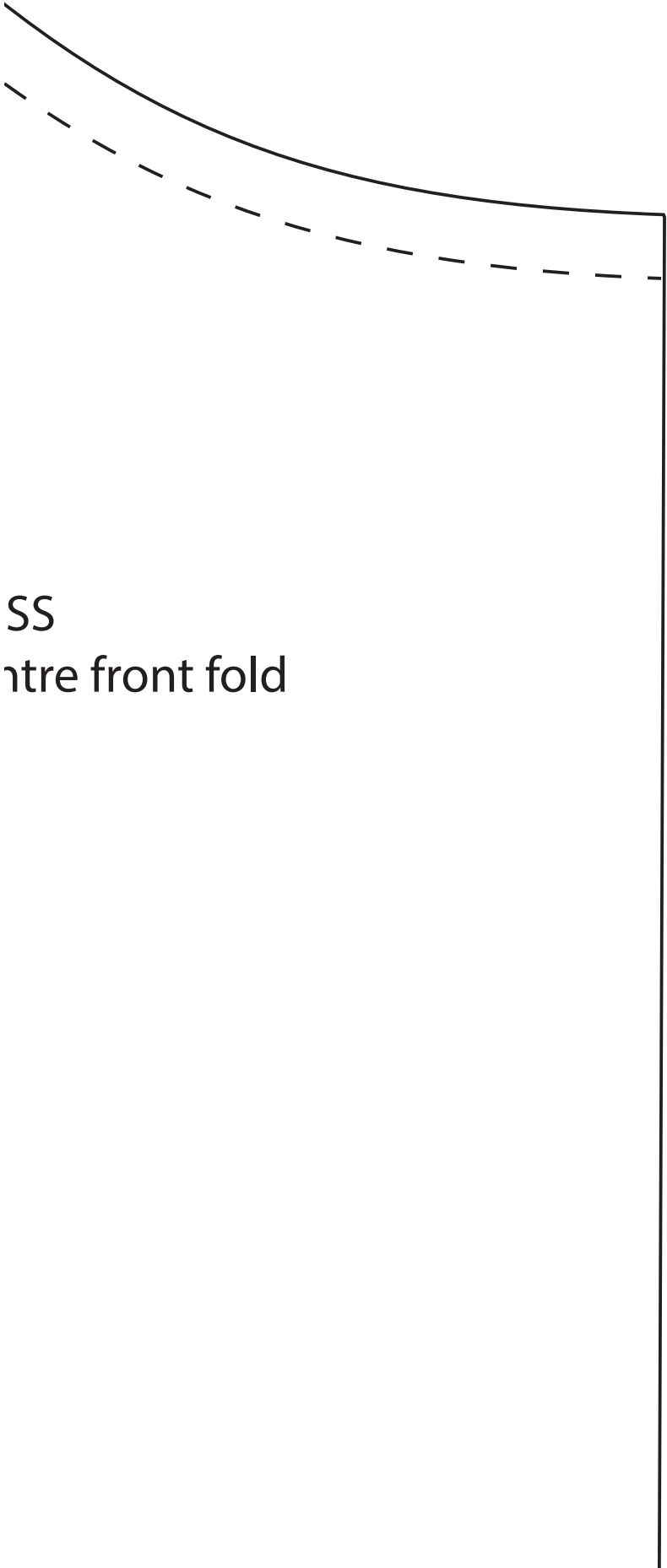


SLEEVE
Cut 1 pair

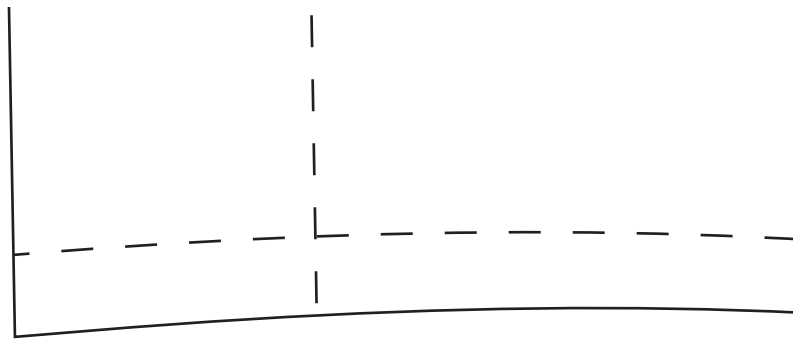


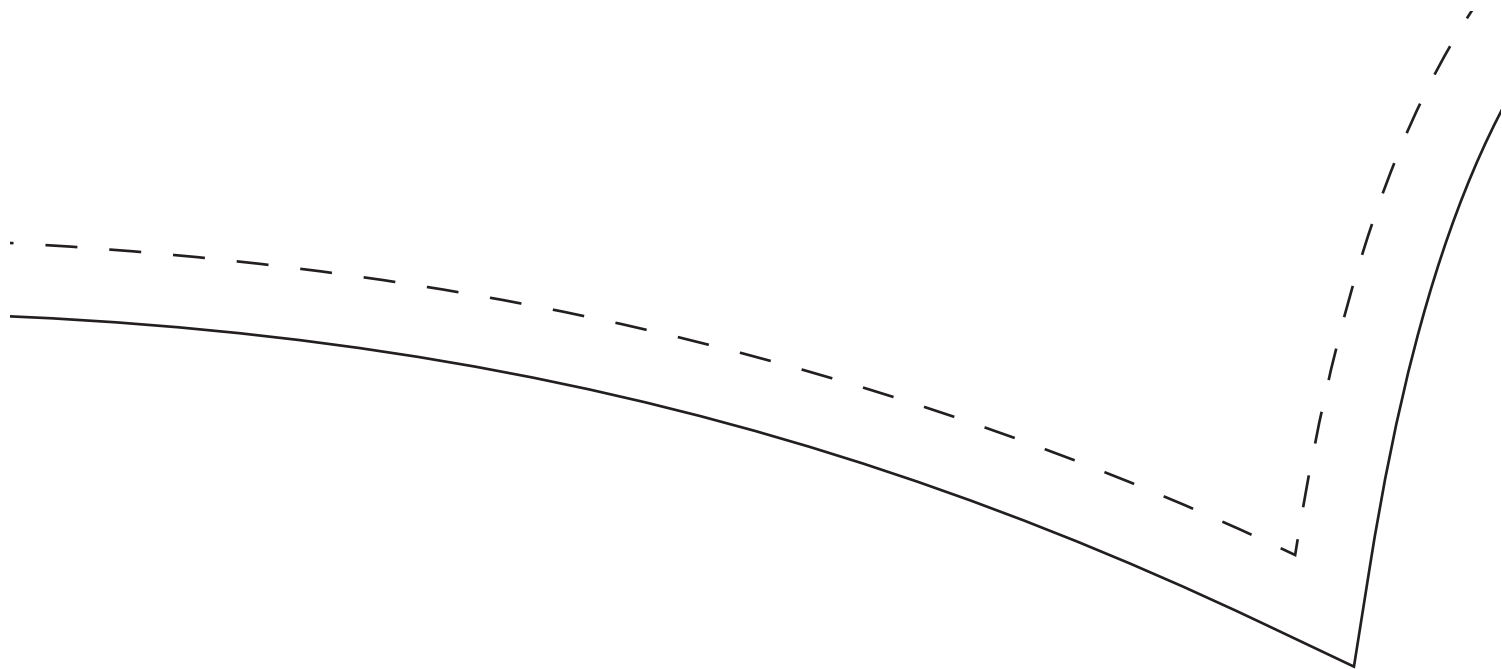


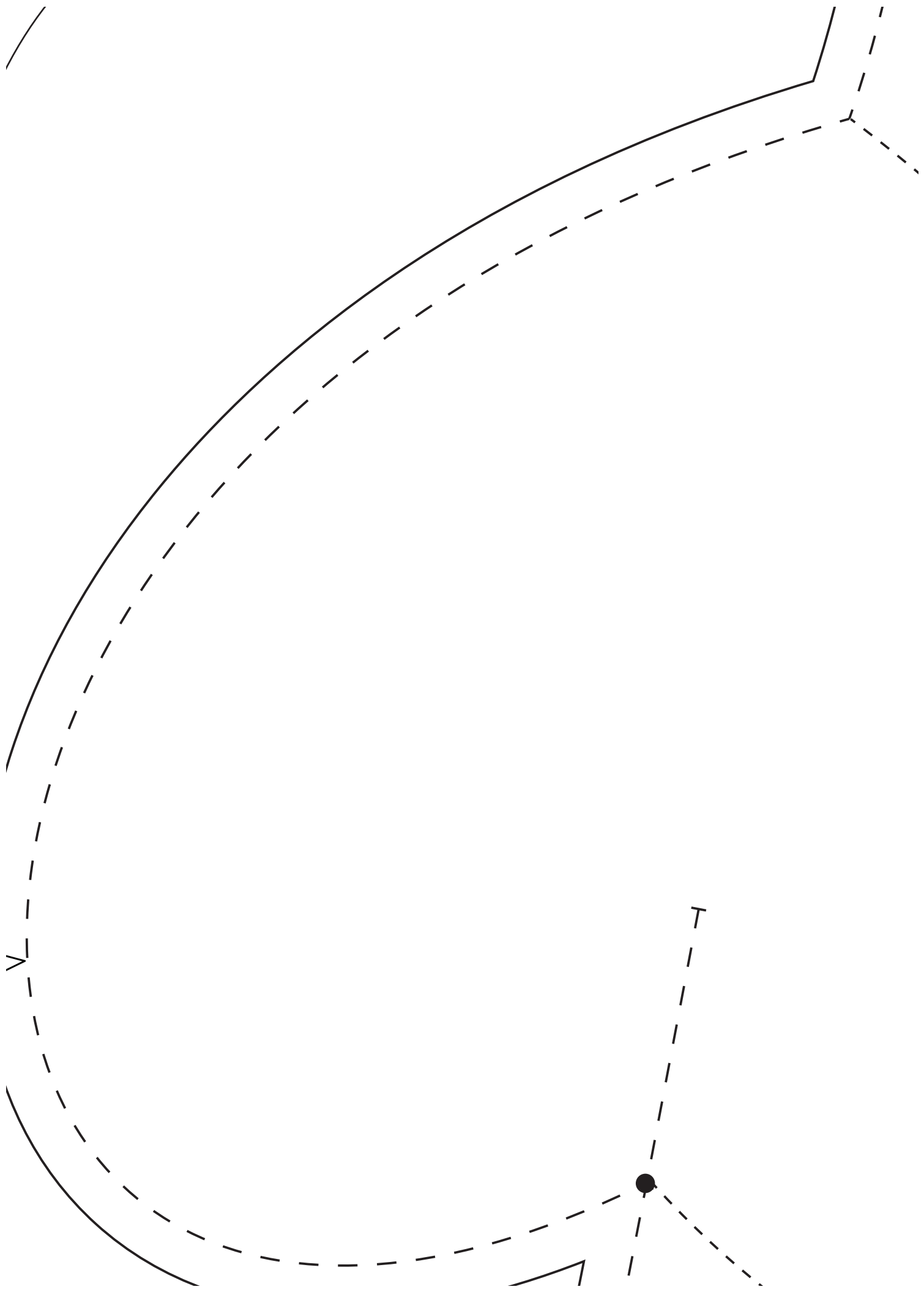
FRONT DRE
cut 1 on cer



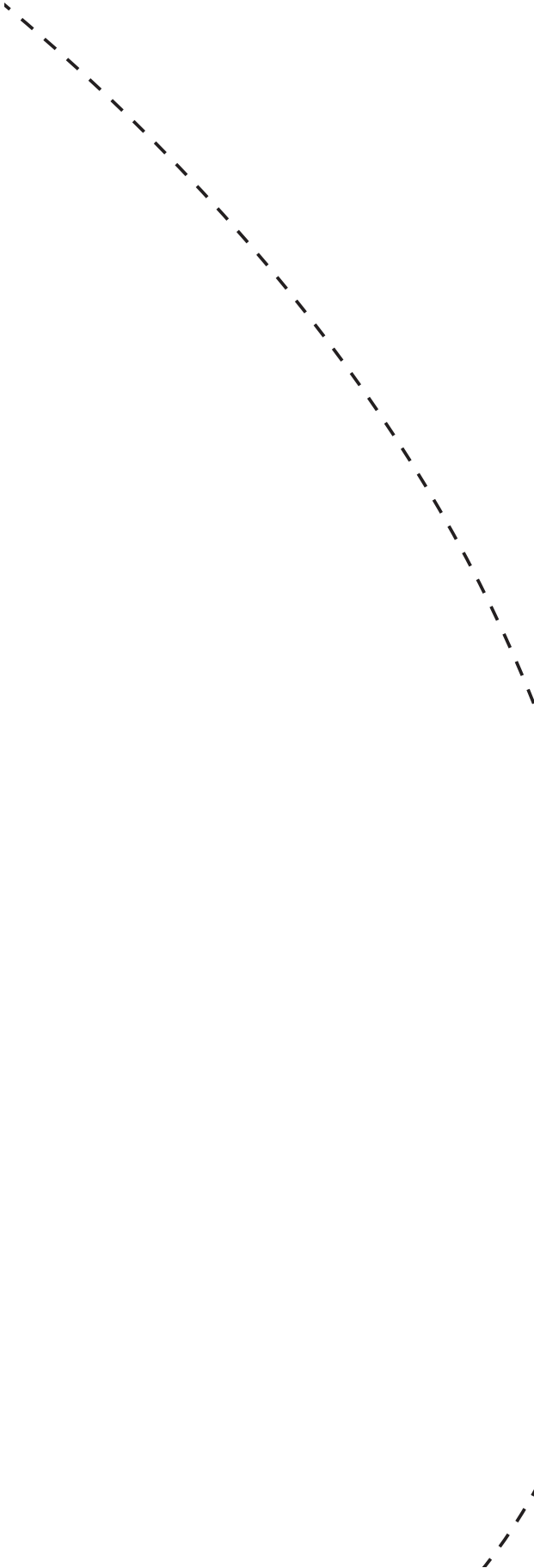
SS
Centre front fold





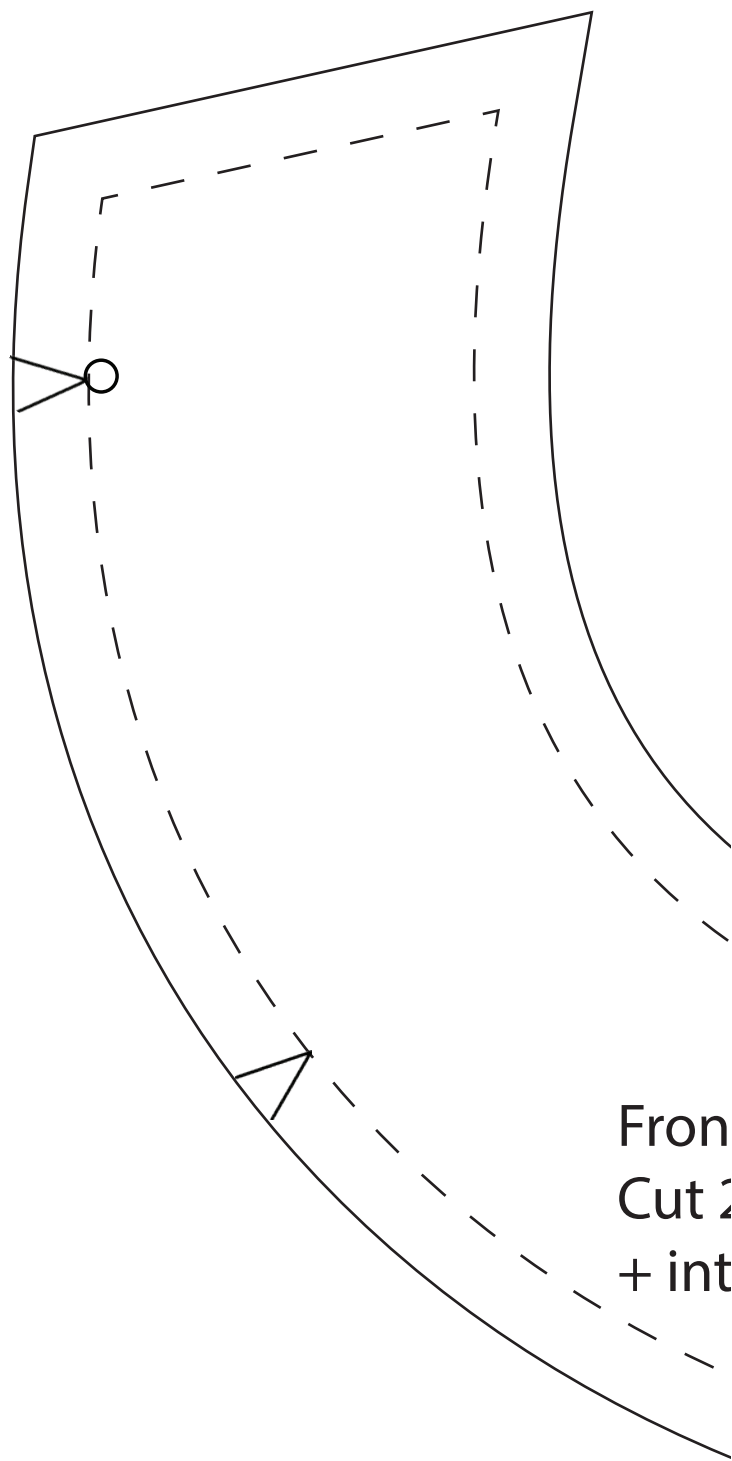


topstitching line for pockets

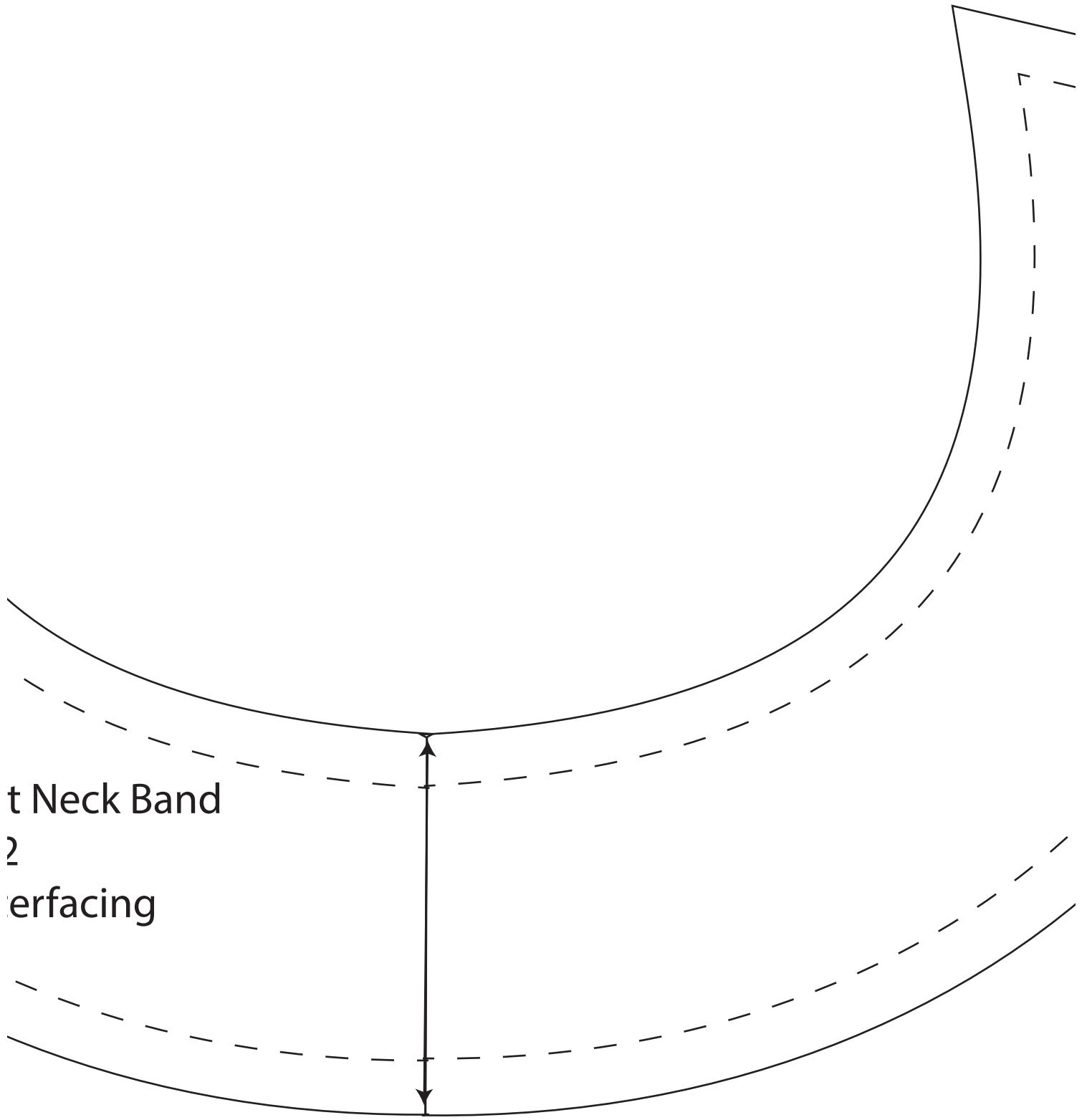




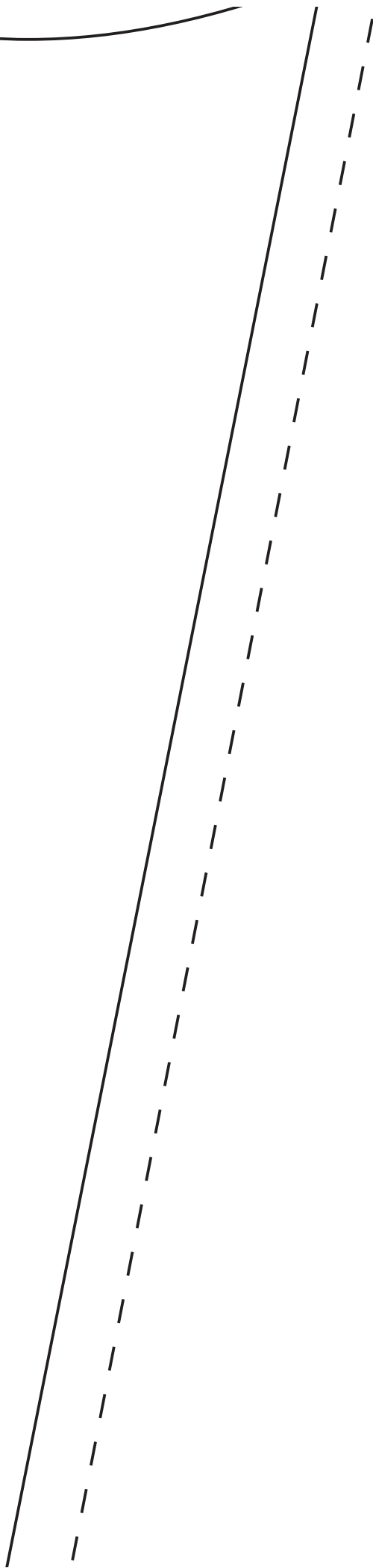
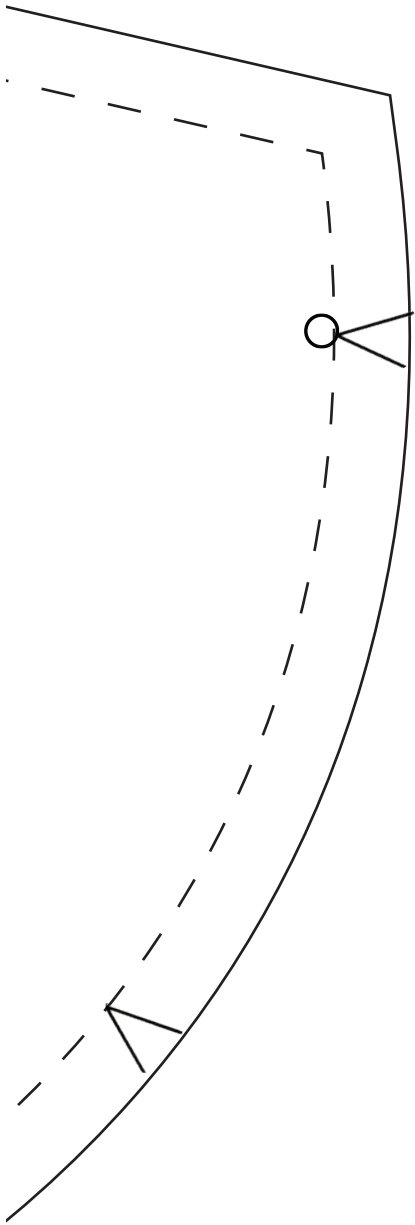
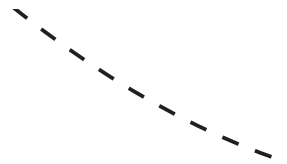
centre front place on fold

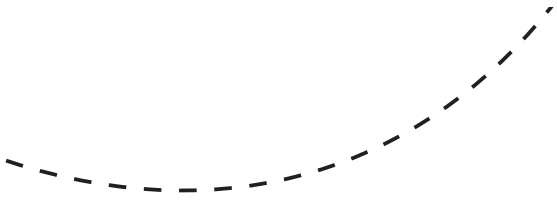


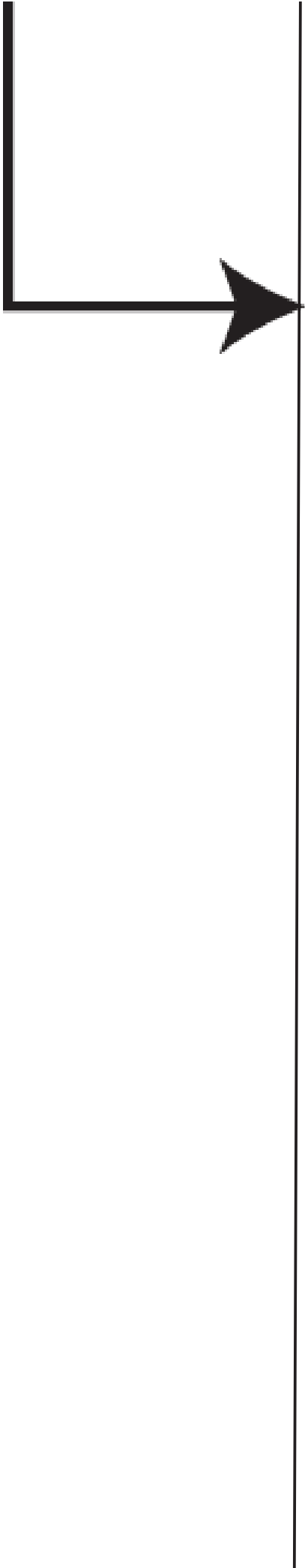
Front
Cut 2
+ int

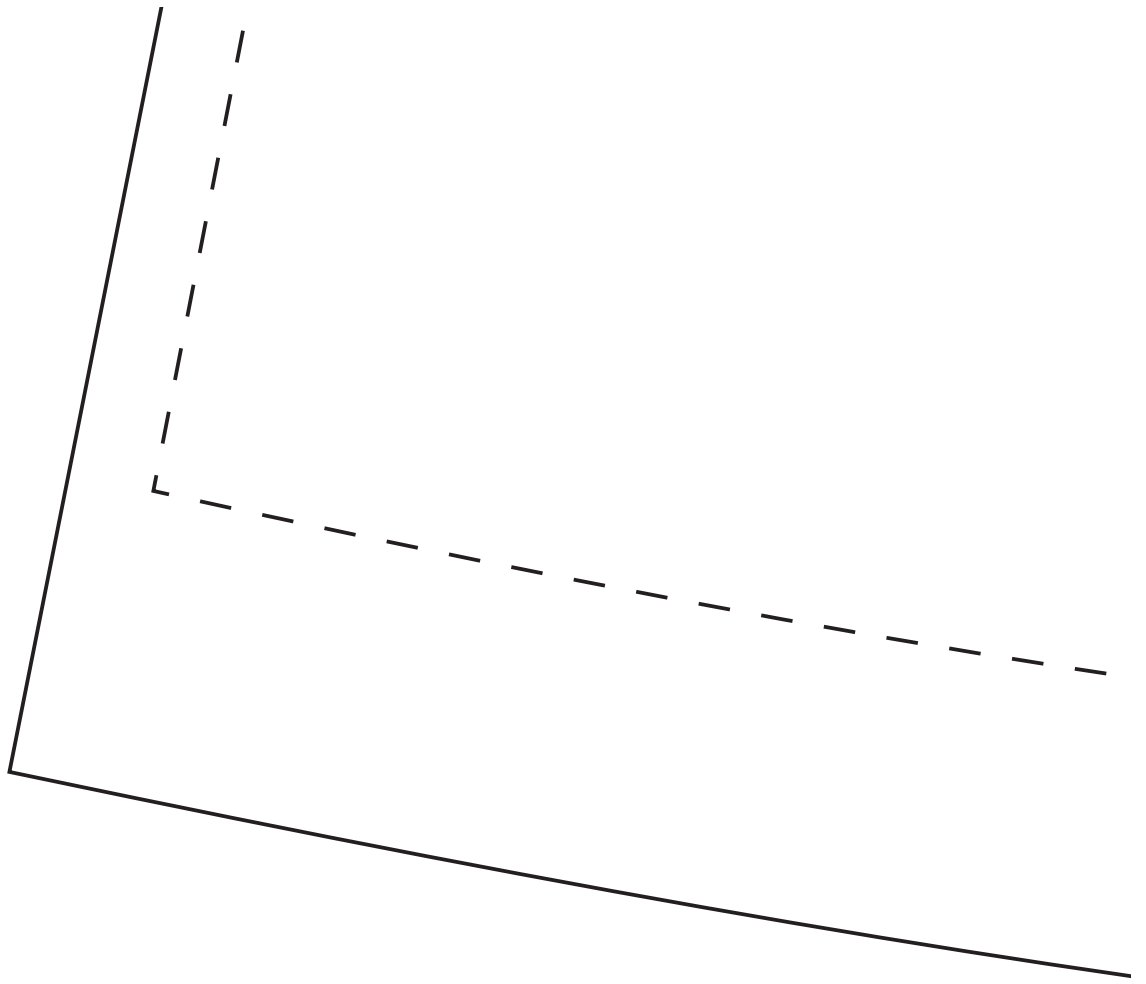


t Neck Band
2
erfacing



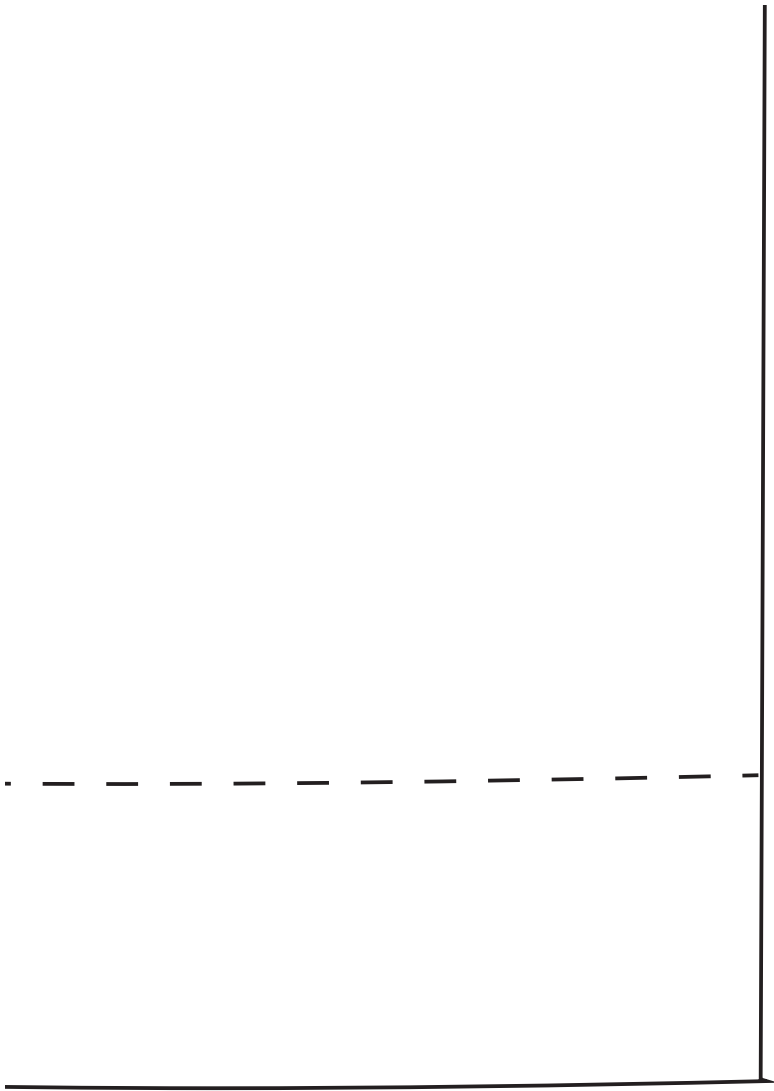








4cm hem allowed



SMOCK DRESS

Fabric amount for this size : 2.

Very loose fitting pull-over, w

Size medium: fits bust 90-105

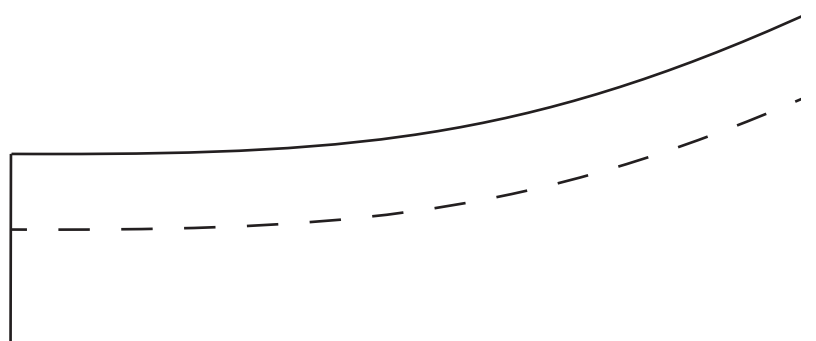
Dress length from back neck:

Dress neck opening: 71 cms

Dress sleeve at bicep: 44 cms

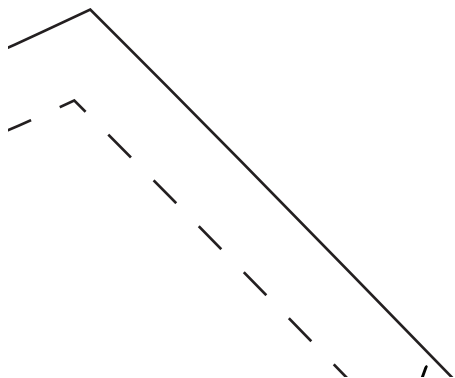
Dress bust measures: 127 cms

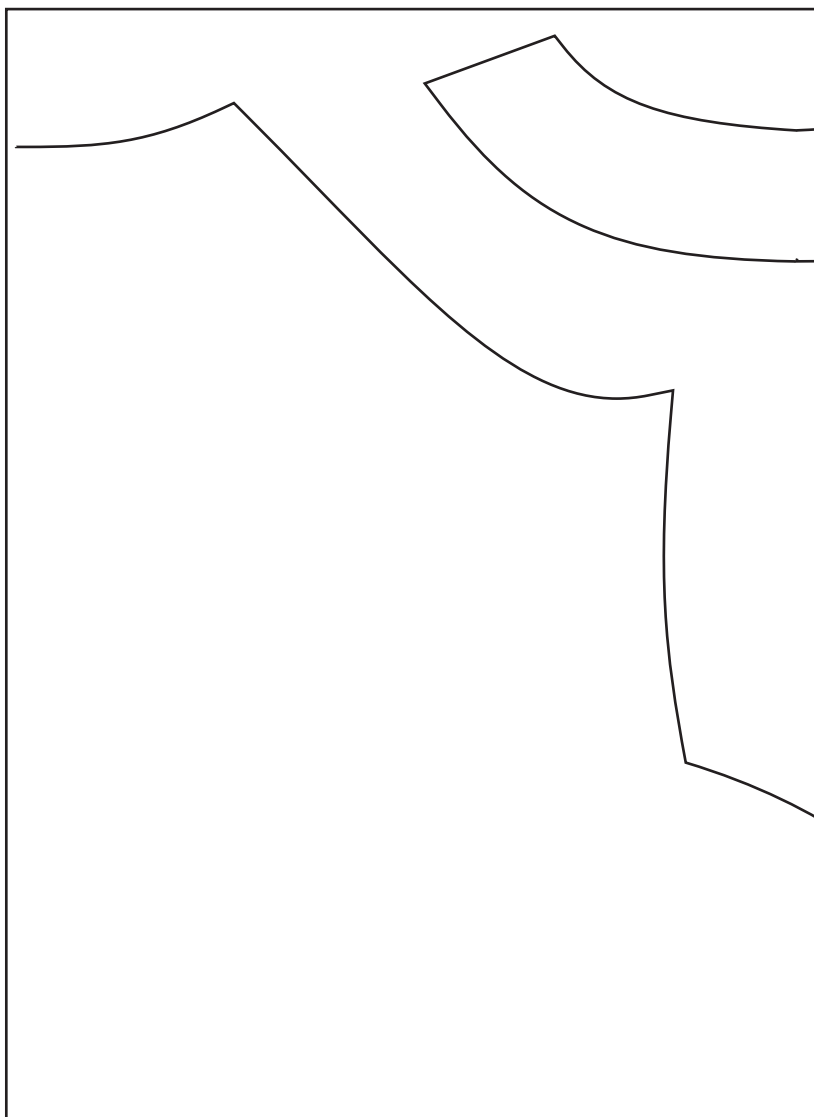
Seam allowance included on



65m of 150cm wide fabric
with side seam pockets
5 cms
99 cms

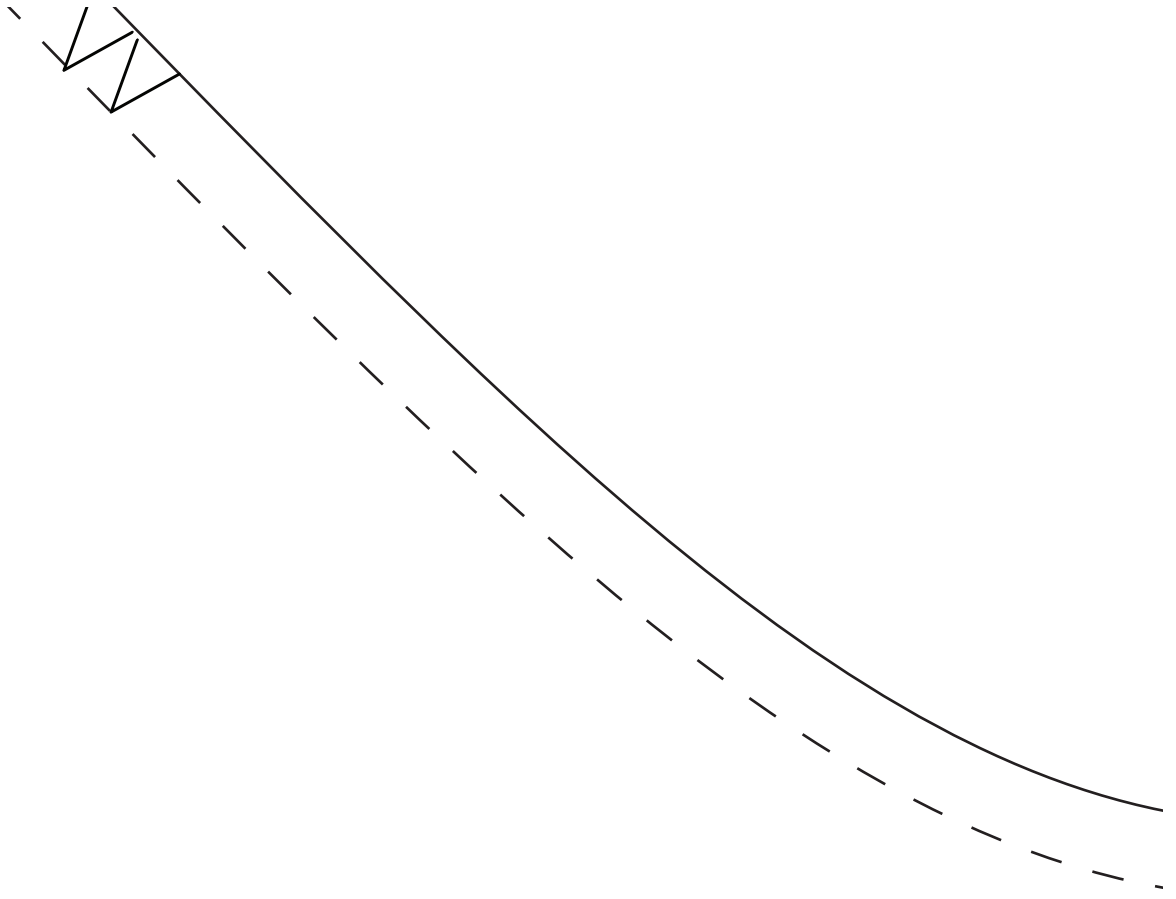
5
pattern pieces: 1cm and 4cm hems





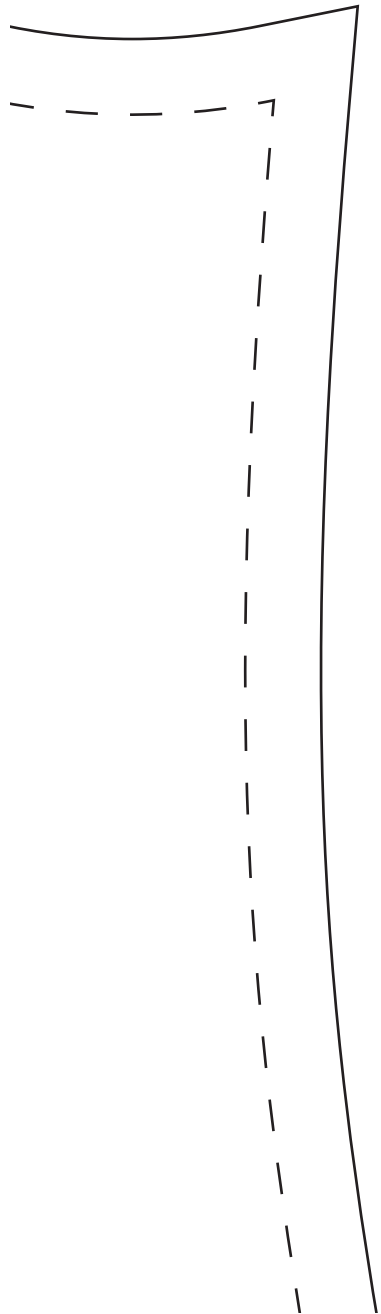


BACK DRES:
cut 1 on cen

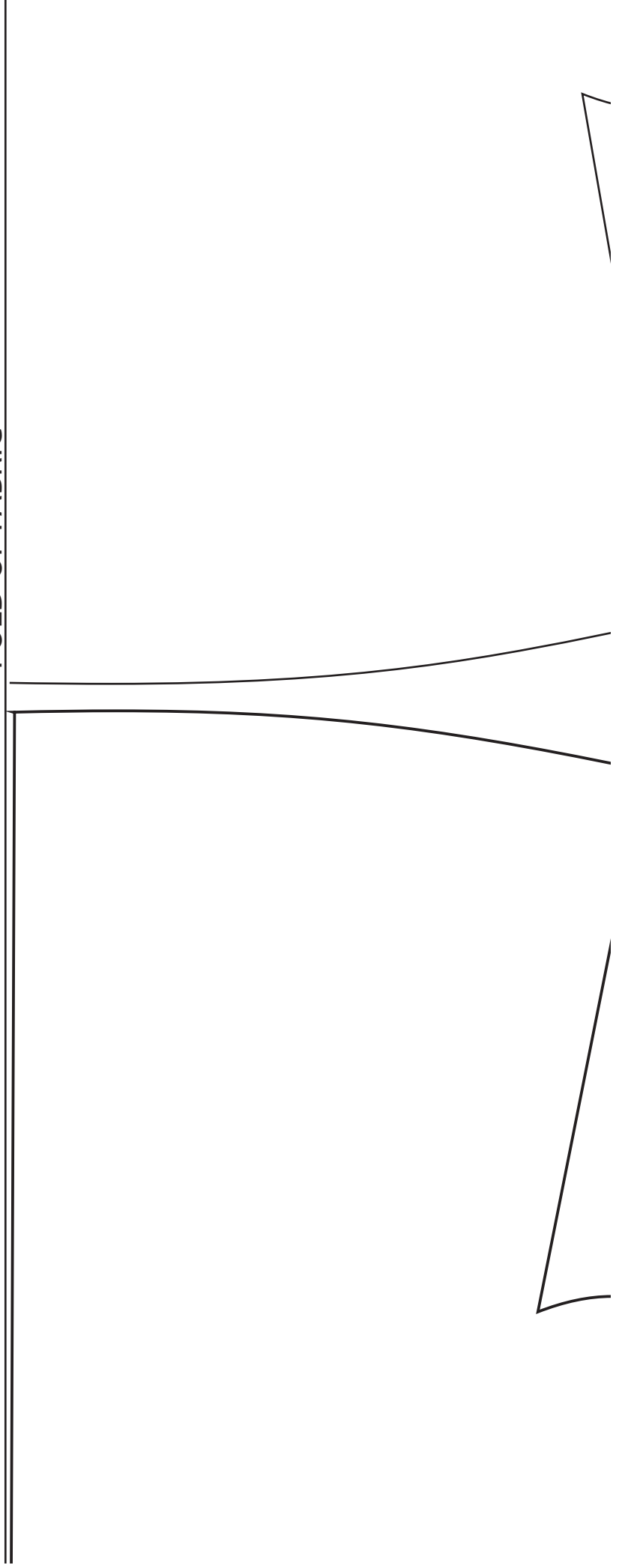


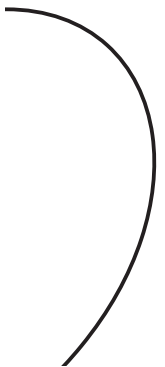
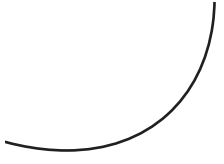
S
tre back fold





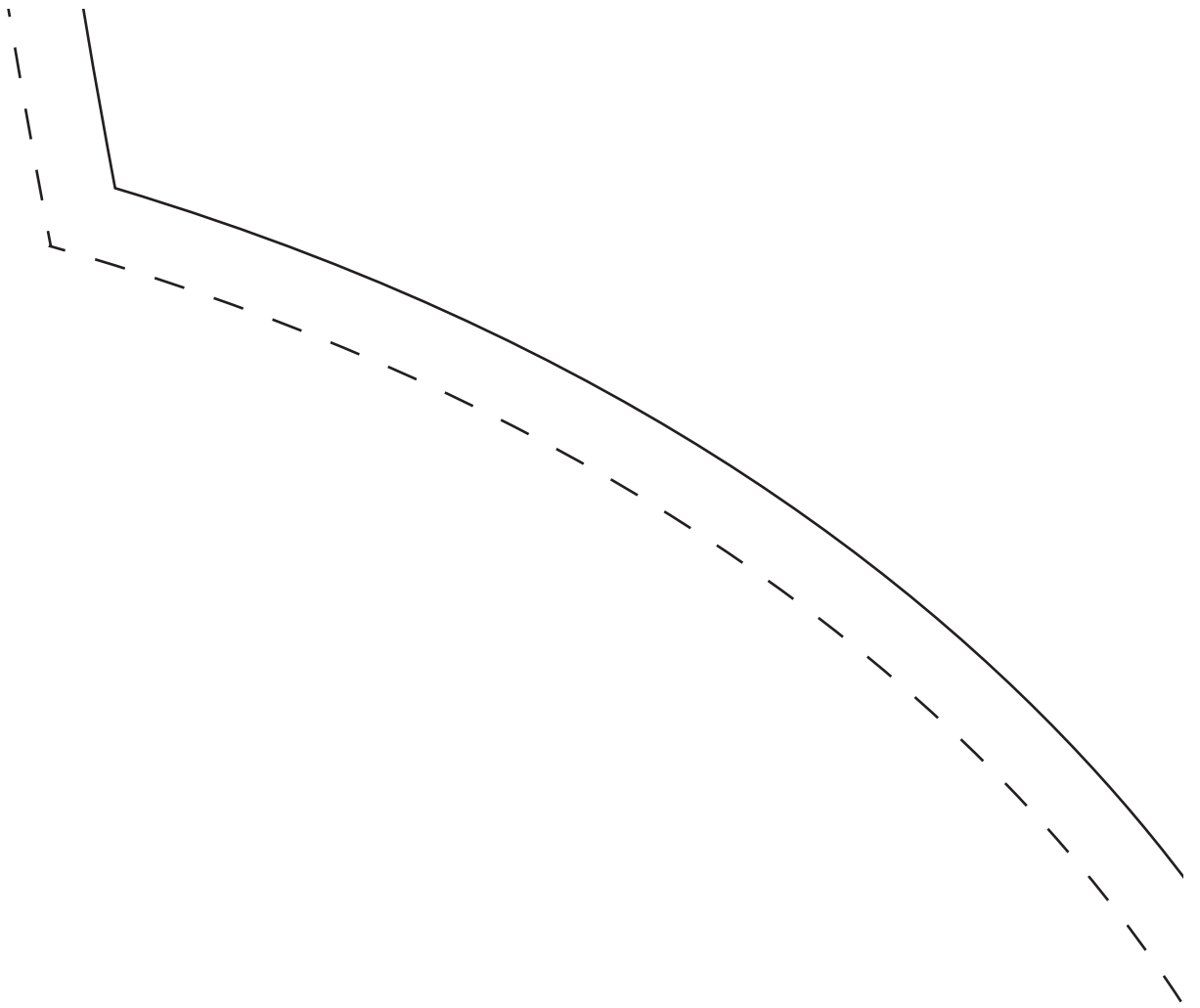
FOLD OF FABRIC

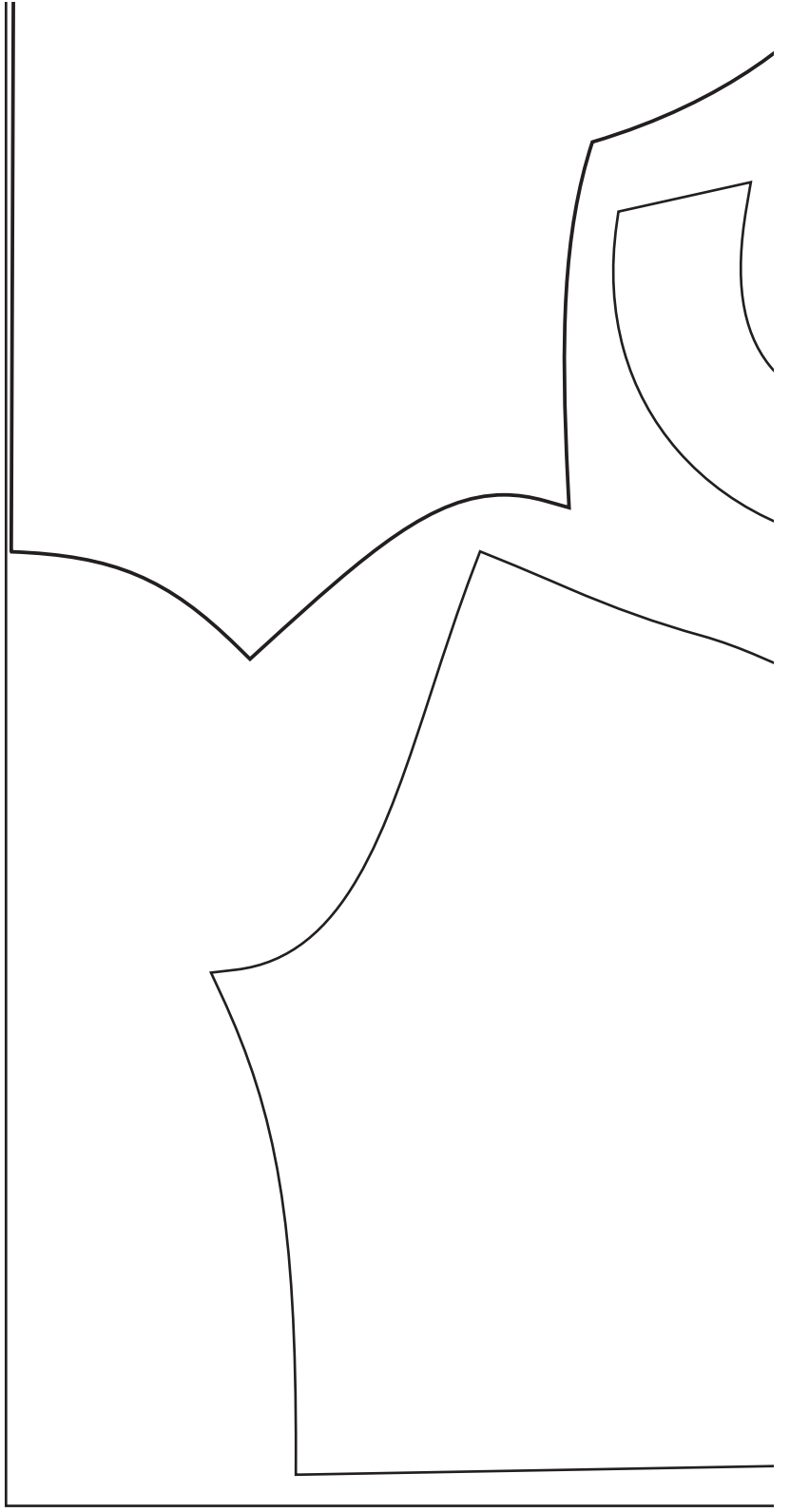
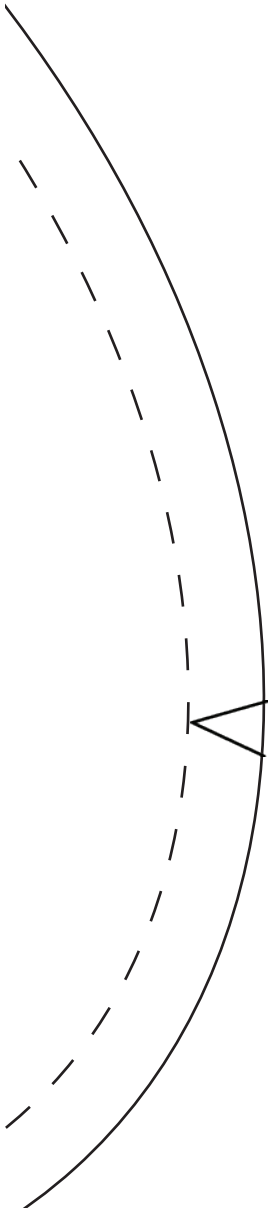


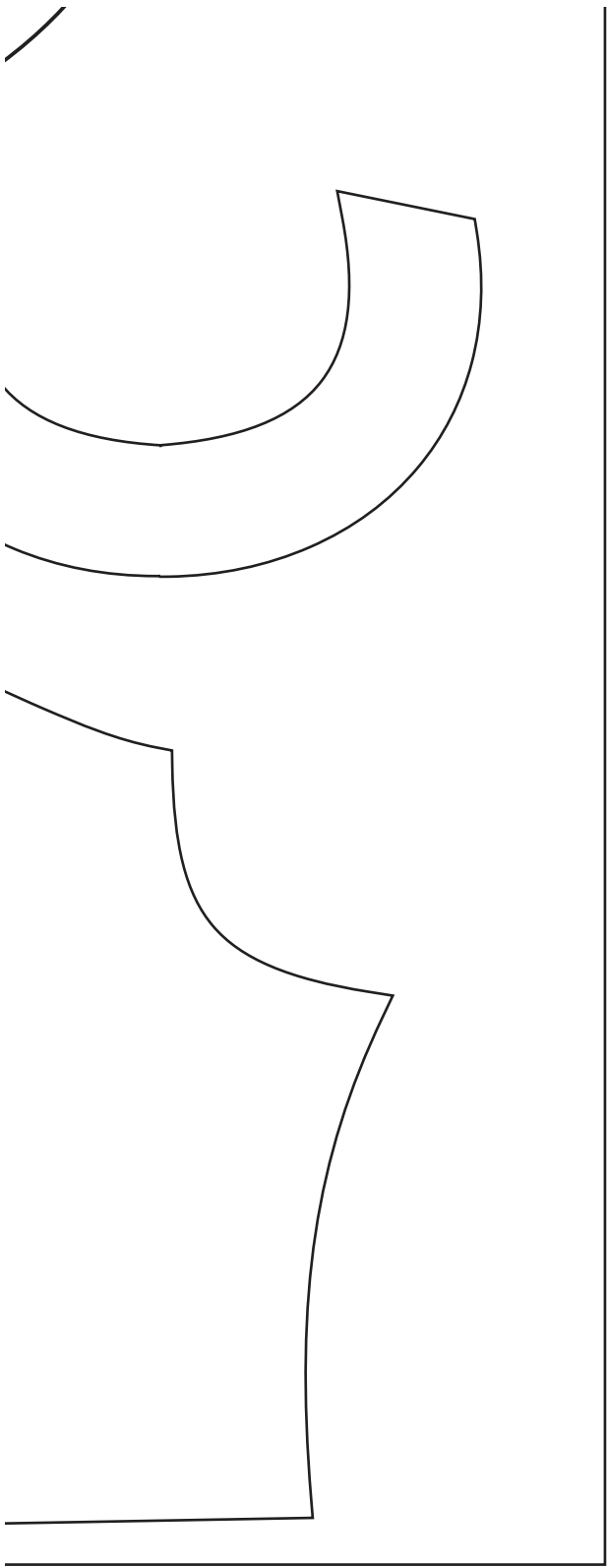


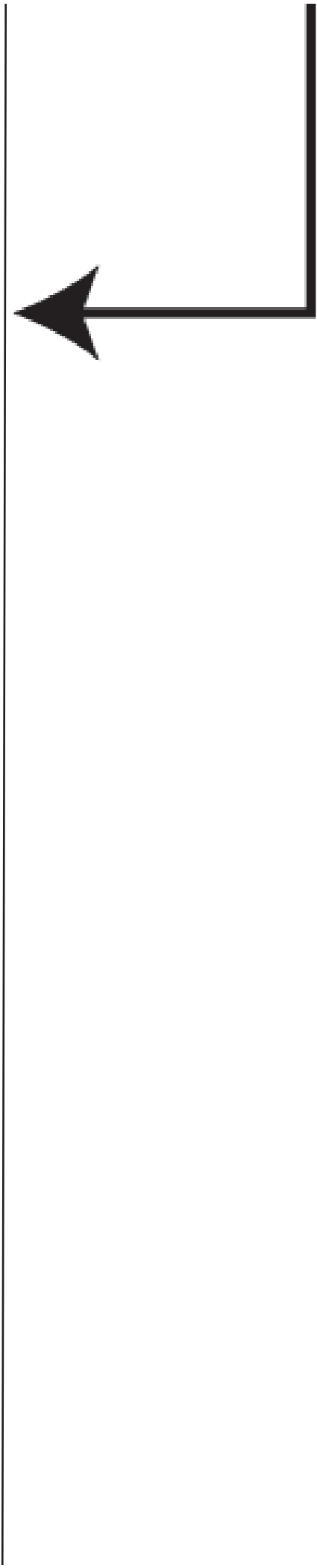
centre back place on



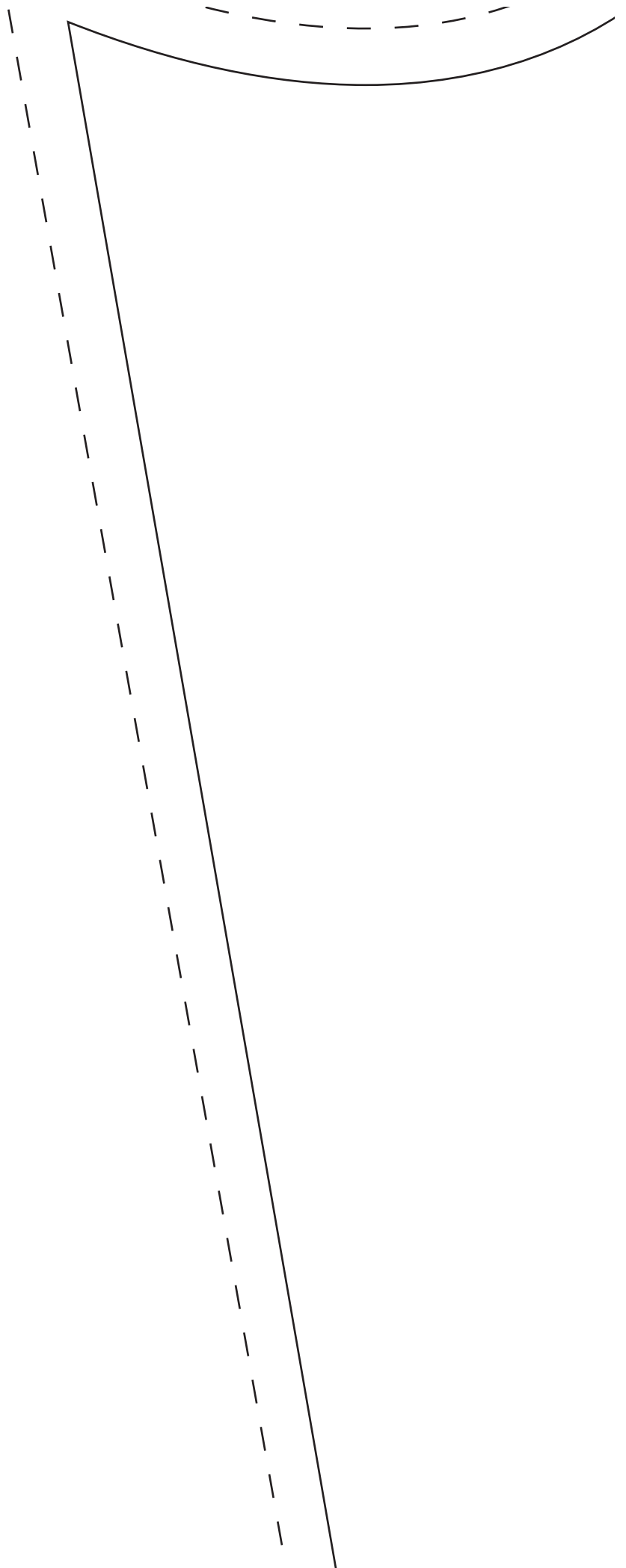


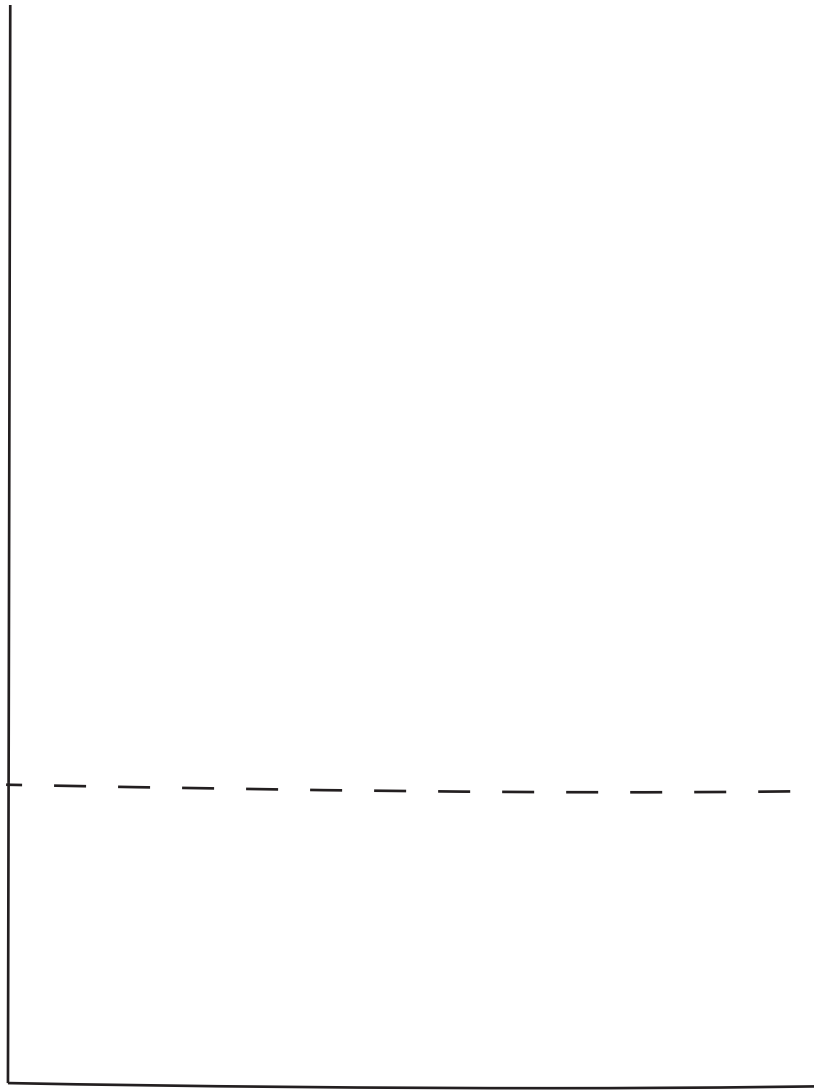














4cm hem allowed



