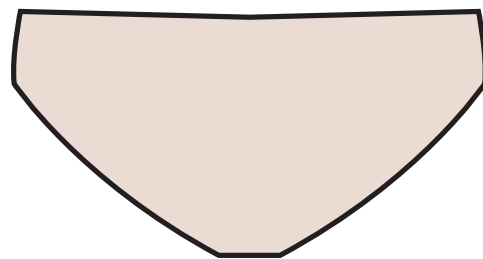
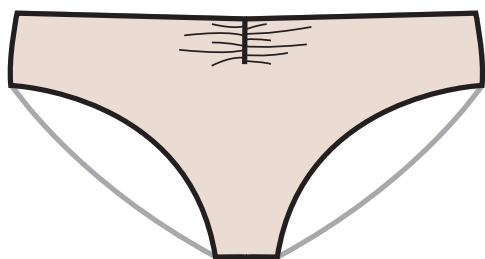
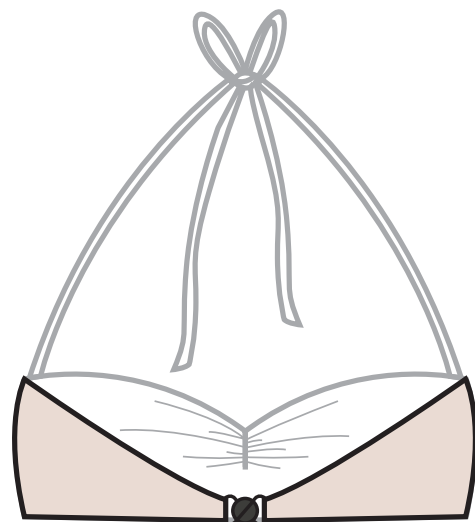
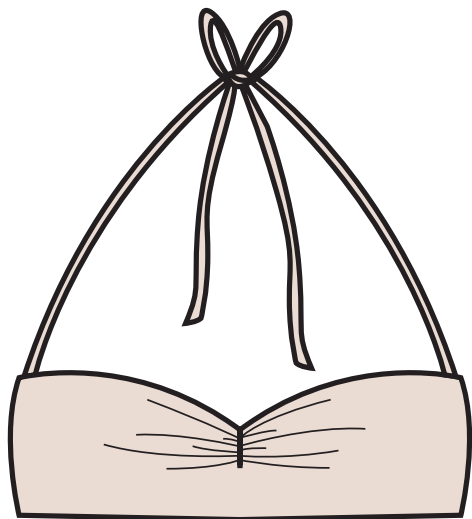


Bathing Suit

Created by *Laura Bolčina* for *Seu,Mama,Seu!*

<http://www.sewmamasew.com/blog2>

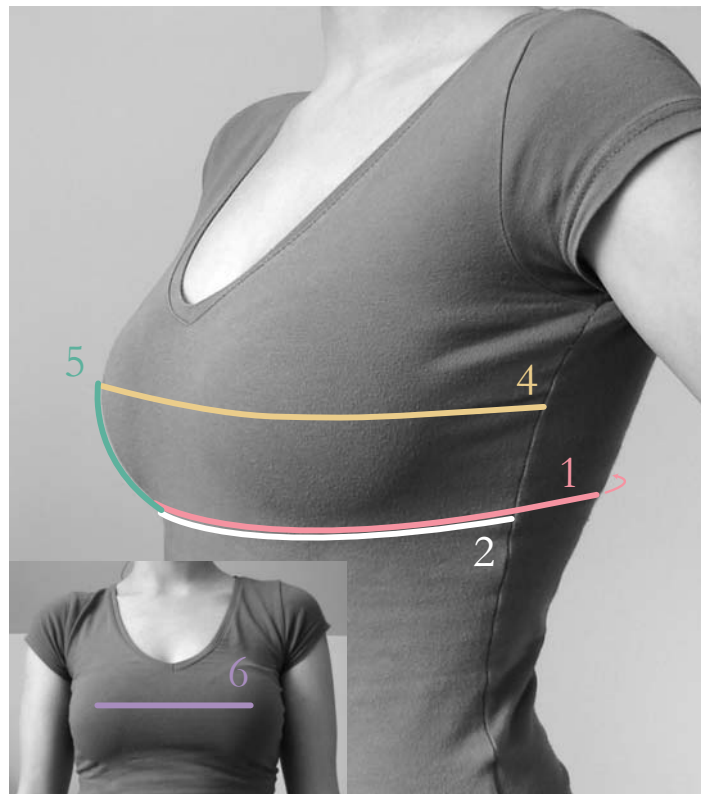


You need:

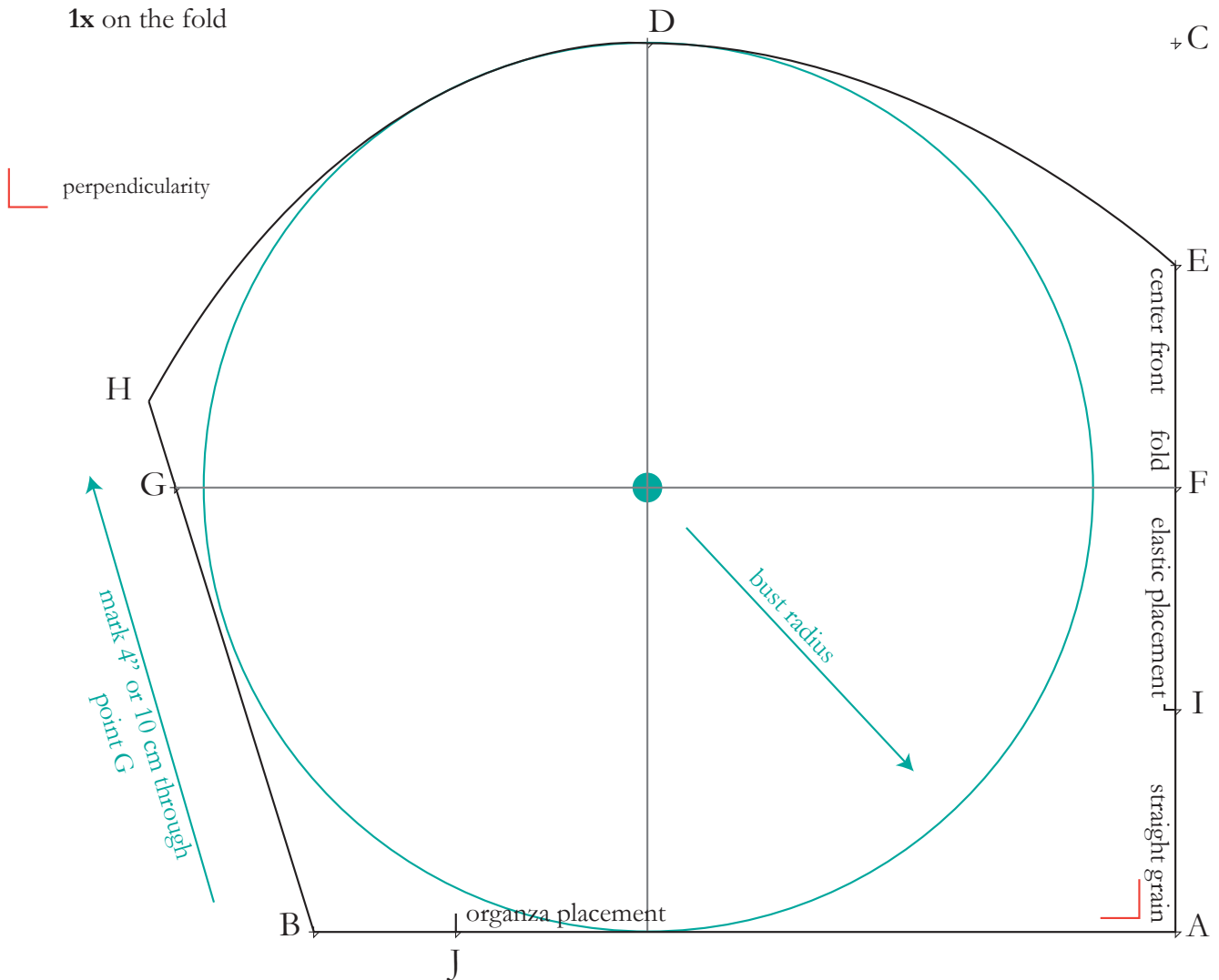
- lycra: cca. 0.6 yd or 0.5 m
- lining (nylon tricot or self fabric): cca. 0.6 yd or 0.5 m
- rubber elastic 5/16" or 8 mm wide: 4.4-6.5 yd or 4.0-6.0 m
- elastic 1/8" or 4 mm wide: cca. 8" or 20 cm
- plastic "sew-in" boning 1/4" or 6 mm wide: 8" or 20 cm
- organza/organza ribbon 5/16" or 8 mm wide: 4-12" or 10-30 cm
- clasp closure

Take your measures:

- (1) under the bust circumference = ____
- (2) under the bust front = ____
- (3) under the bust back = (1) minus (2) = ____
- (4) bust front = across the bust from one side to the other = ____
- (5) bust radius = under the bust to bust point = ____
- (6) bust point to bust point = ____



Top Front



1. Draw the pattern:

A to B = one-half of **(2)**, minus 1-1/8" or 3 cm = ____

A to C = 2 x **(5)** = ____

C to D = one-half of **(6)** = ____

A to E = 3 x **(5)**, divided by 2 = ____

A to F = **(5)** = ____

F to G = one-half of **(4)**, minus 1-3/4" or 4.5 cm = ____

Draw a 4" or 10 cm long line from B through G and mark H.

A to I = one-third of (A to E) = ____

Draw a line from G to F. Draw a line that goes from D downwards and is perpendicular to G to F line.

The intersection of the two lines is the center of a circle with the radius of **(5)**. Draw it.

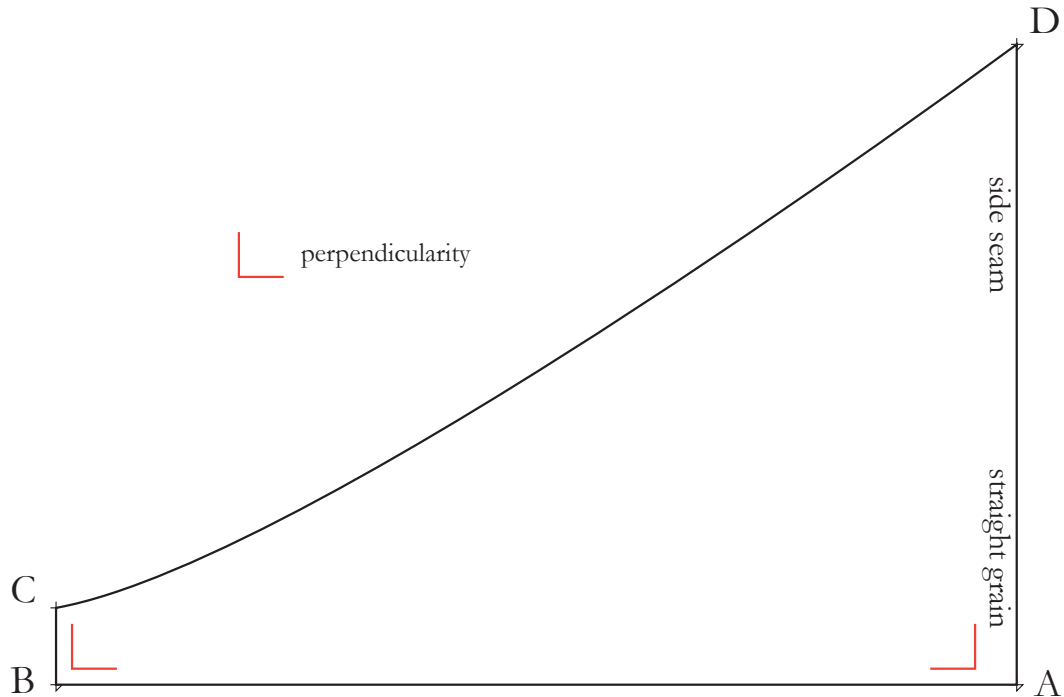
Draw a curve from H to E. Curve must touch D and embrace the top of the circle.

A to J = 0.7 x (A to B) = ____

2. Add the seam allowances: add 3/8" or 1 cm s.a. on sides (A to B), (B to H) and (H to E)

Top Back

2x



1. Draw the pattern:

A to B = one-half of **(3)**, minus $3/4''$ or 2 cm = _____

B to C = clasp loop height = _____

A to D = $4''$ or 10 cm

Draw a slightly curved line from C to D.

2. Add the seam allowances:

add $3/8''$ or 1 cm s.a. on sides (B to A), (A to D) and (D to C)

add $1''$ or 2.5 cm s.a. on side (B to C)

Neck straps

Cut twice $21'' \times 2''$ or 52 cm x 5 cm (seam allowances - $3/8''$ or 1 cm - included)

Lining

When using dark fabric, cut lining just for the front pieces, otherwise cut it for all of them, except for the straps.

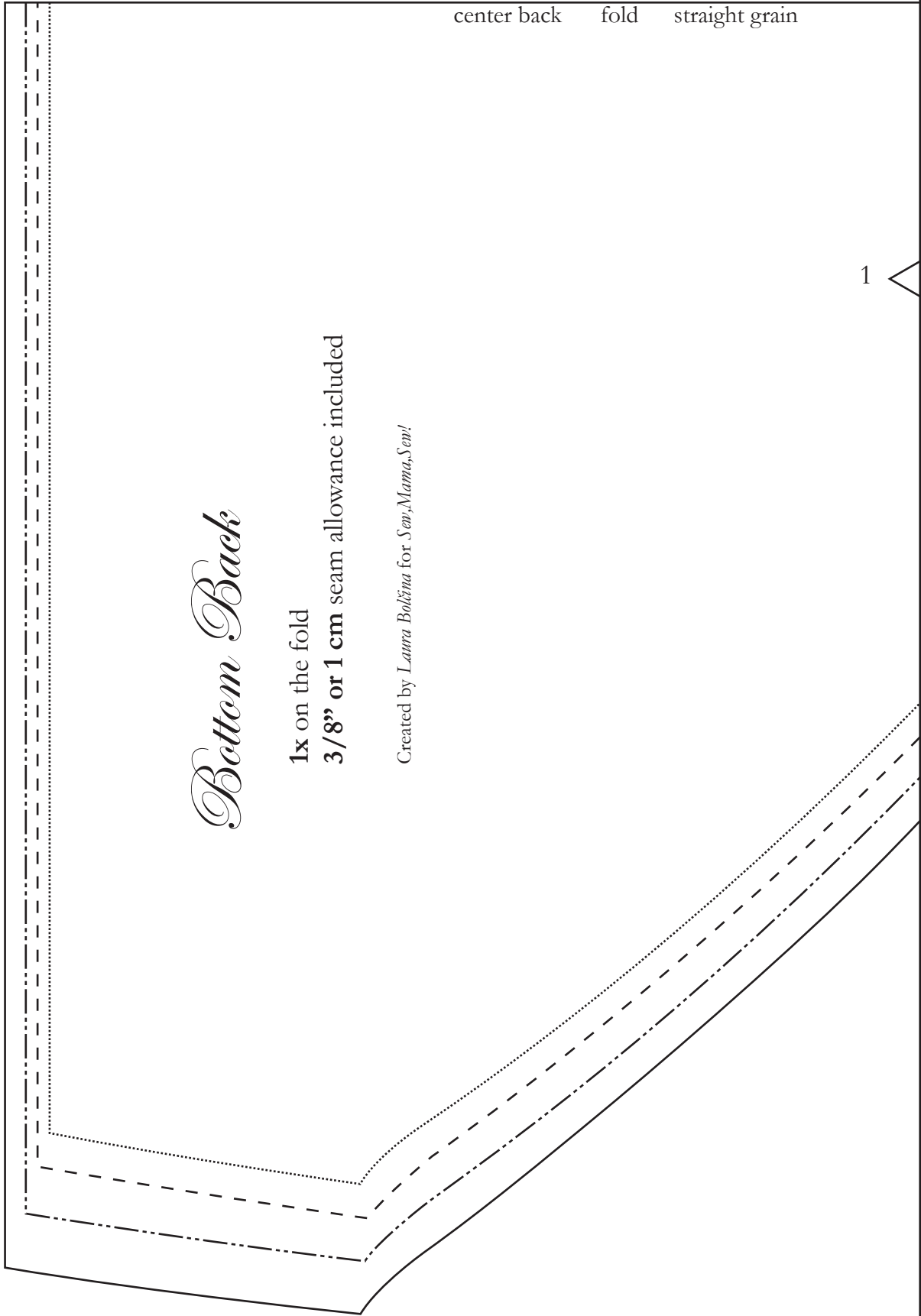
Bottom Back

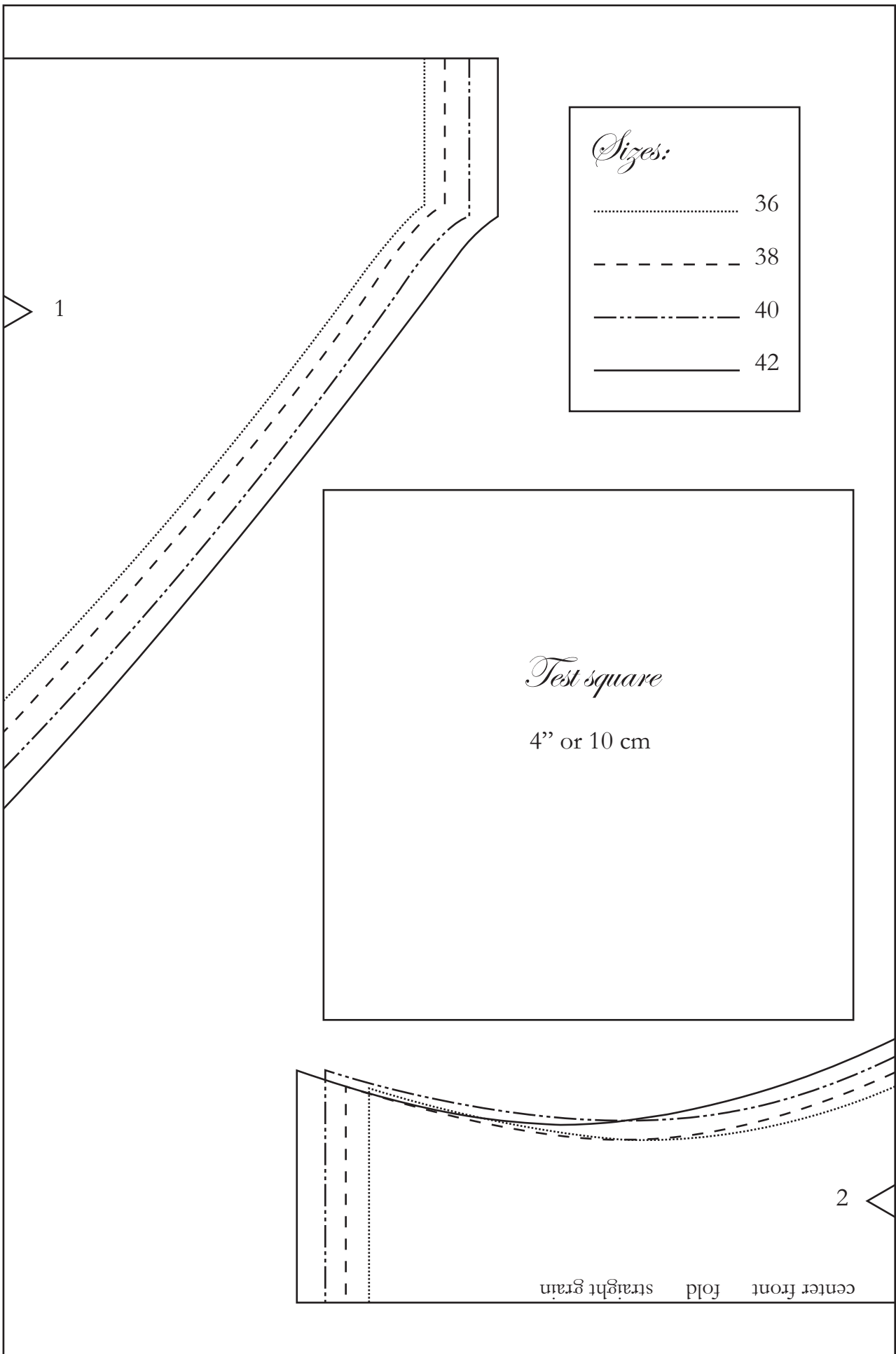
1x on the fold
3/8" or 1 cm seam allowance included

Created by *Laura Boltina* for *Sew, Mama, Sew!*

center back fold straight grain

1





Sizes:

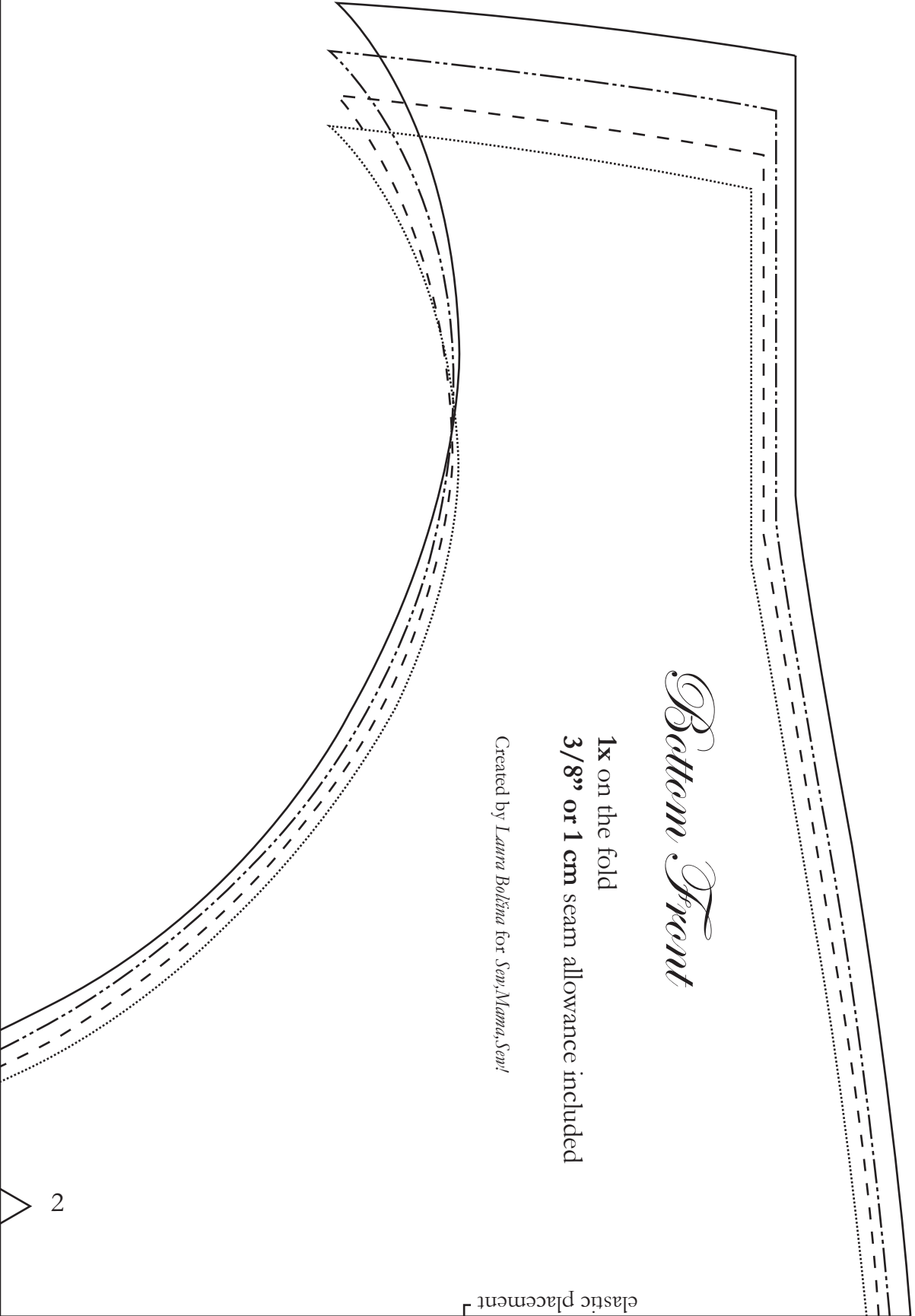
- 36
- - - - - 38
- · - · - 40
- 42

Test square
4" or 10 cm

center front fold straight grain

1

2



Bottom Front

1x on the fold
3/8" or 1 cm seam allowance included

Created by *Laura Bohina* for *See, Mama, Sew!*

elastic placement

2