

Child's Ruffled Purse Pattern

By: Robin Hill for Create Kids Couture



Difficulty Level: Beginner

Materials Needed:

- Fabric (see chart below for quantities needed)
- Pellon Fusible Fleece 987F interfacing
- Scissors or Rotary Cutter
- Cutting Mat if using Rotary Cutter
- Ruler
- Pins
- Sewing Machine and/or Serger

Fabric Requirements:

Outer and Strap	Lining	Ruffles	Pellon
1/3 yard	1/3 yard	1/8 yard	1/3 yard

Cutting:

Piece 1 Purse Front and Back	Piece 2 Purse Bottom
Cut 2 outer fabric	Cut 1 outer fabric
Cut 2 lining fabric	Cut 1 lining fabric
Cut 2 interfacing	Cut 1 interfacing
Strap 3"L x 14"W	Ruffles* 1.25"L x 17" W
Cut 1 outer fabric	Cut 2 of choice
Cut 1 interfacing	

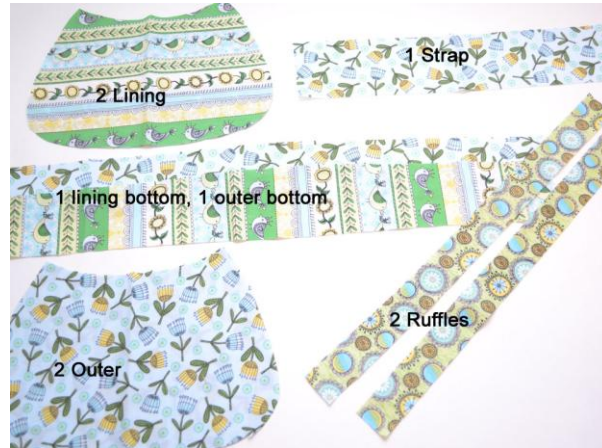
***If you do not have a serger that does rolled hems, add 1” to your ruffle length, turn under 1/4” iron, and another 1/4” and hem on each side. If using a rolled hem foot, add 1/2” to your ruffle length.**

***Note that the seam allowance when sewing will be 3/8" (unless otherwise noted in the pattern) and it is included in the measurements above.**

When printing out the purse pattern piece make sure the "Auto Rotate and Center" Box is not ticked and page-scaling is set to "None". This is VERY important. After cutting out the pattern pieces, tape the black lines together so they are one on top of another matching up the letters.

Construction:

Step 1: Cut out your pattern pieces and tape where needed. Place on the fabric and cut as directed in the cutting chart. When you are finished you should have a pile similar to this:



Cut Interfacing for each outer fabric piece.

Step 2: Iron on interfacing to wrong side of outer fabrics (front, back, bottom, strap).





Step 3: Roll hem your ruffle pieces on the long sides. Then run a gathering stitch right down the middle.

Step 4: Take your front purse piece and measure down from the top 1 ¼ inch. Mark both the left and right sides. Measure down 1 ½ inch and mark again on each side. Gather your ruffles to the width of the purse and place the center gathering stitch on your ruffle pieces on top of your measurement marks. Follow the curve of the purse so the ruffle is always the same distance from the top. Stitch your ruffles to the purse front by sewing just next to the gathering stitch. Pull out the gathering stitch.



Step 5: Pin your purse bottom to the purse front right sides together. Sew. Repeat with the lining.

Then repeat, placing the purse back right sides together with the purse bottom, pin and sew.
Repeat with the lining.



Step 6: Fold your strap piece in half right sides together along the width of the fabric. Stitch the long side closed making a tube. Turn the tube right side out and iron. Topstitch using a ¼ inch seam allowance.

Step 7: Your purse outer piece should still be inside out. Turn the top down ½ inch towards the wrong side all the way around and press. Repeat with the purse lining.





Step 8: Turn your purse outer right side out, pushing out the seams. Tuck the lining inside the purse outer, wrong sides of fabric facing. Line up the side seams. Take your strap piece and insert it at the side seams, tucking it in $\frac{1}{2}$ inch on each side. Carefully pin all the way around the purse top, matching up the edges and the seams. Topstitch using a $\frac{1}{8}$ inch seam allowance.

That's it! You did it!

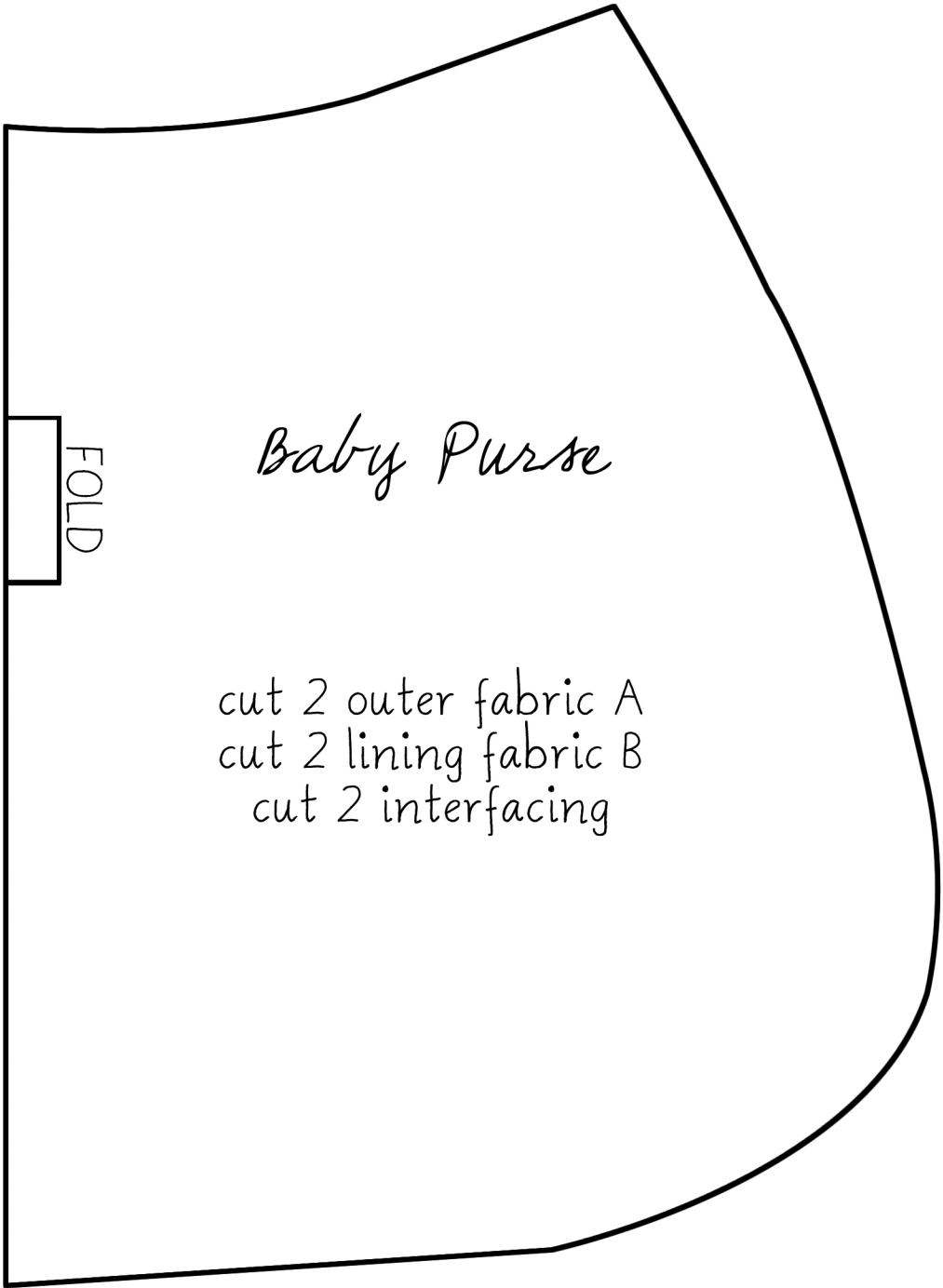


Thank you for purchasing a Create Kids Couture original pattern! If you have any questions or concerns, do not hesitate to e-mail us at: CreateKidsCouture@gmail.com
We are constantly working on new patterns so if you want up-to-date information on what patterns we have in production now please become our fan on Facebook:
www.Facebook.com/CreateKidsCouture

We also have free tutorials available on our blog: www.CreateKidsCouture.blogspot.com
Lastly, be sure to check our website to download our patterns instantly to your computer:
www.CreateKidsCouture.com

© 2013 Robin Hill for Create Kids Couture

All rights reserved. No part of this pattern may be reproduced or transmitted in any form or by any means, electronic, mechanical, photocopying, or otherwise, without prior written permission of Create Kids Couture. All patterns are original designs by Create Kids Couture. All patterns are for personal use only and limited to small scale home businesses. If you do create items to sell from this pattern, we ask that you give us credit wherever photos of said items are posted.

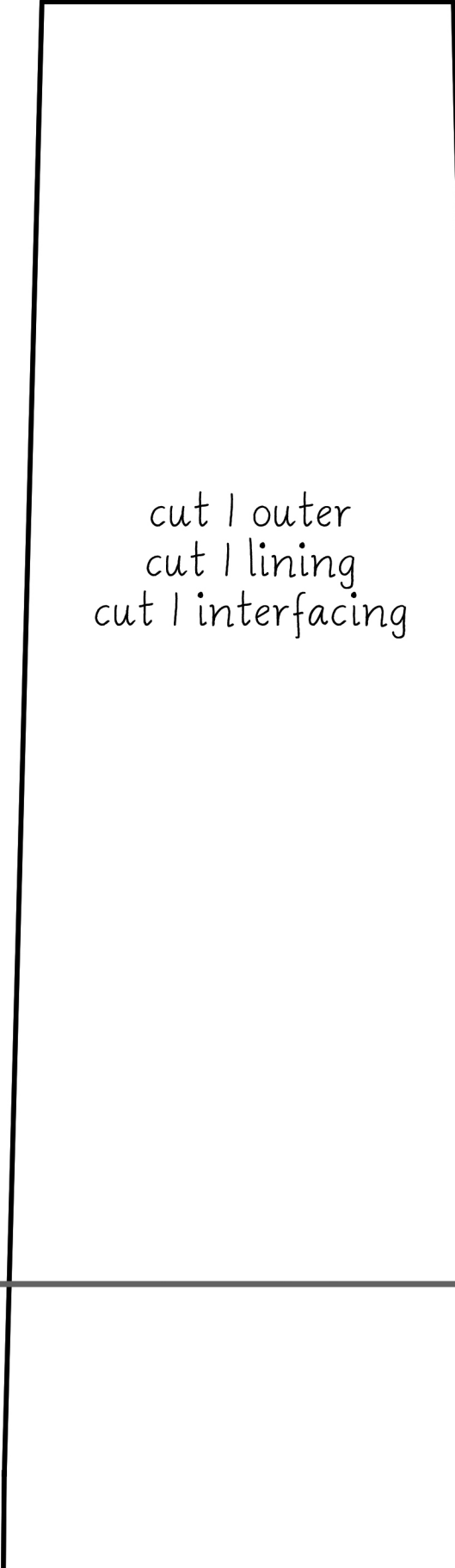


FOLD

Baby Purse

cut 2 outer fabric A
cut 2 lining fabric B
cut 2 interfacing

1x1



cut | outer
cut | lining
cut | interfacing



1x1

A
A

B
B

