

Heaven and Earth Designs

The Zodiac 1

Chart No: HAECRM 102

Chart Design By Michele Sayetta

Artwork by *Ciro Marchetti*



Finished Design Size 396 W by 546 H (15-3/4 W X 21-3/4 H inches on 25ct)

Heaven and Earth Designs

1373 45th Ave SW

Willmar MN 56201

320-214-7998

www.heavenandearthdesigns.com

Copyright Heaven and Earth Designs 2008

<http://www.ciomarchetti.com/>

Instructions

The model for The Zodiac 1 is recommended to be stitched over 1 on 25 count Dublin Linen. Please use 1 strand of floss or 2 depending on your coverage preference. Charts are recommended to be stitched from page 1 top left to the last page bottom right.

It is recommended that you make working copies and enlarge to view detail and symbols.

You may also use the tent stitch or full crosses depending on your preference.

This is a large project that will offer many hours of stitching pleasure.

We thank you for purchasing this design and welcome any questions or comments that you may have.

















Heaven and Earth Designs
Copyright © 2008
<http://www.ciomarchetti.com/>

Pattern Name: The Zodiac 1-Marchetti
Designed By: Michele Sayetta
Company: Heaven and Earth Designs
Copyright: 2008
Fabric: Linen 25, White
 396w X 546h Stitches
Size: 25 Count, 15-3/4w X 21-3/4h in

Floss Used for Full Stitches:

Symbol	Strands	Type	Number	Color
	2	DMC	150	Dusty Rose-ULVYDK
	2	DMC	152	Shell Pink-MDLT
	2	DMC	154	Grape-VYDK
	2	DMC	160	Gray Blue-MD
	2	DMC	161	Gray Blue
	2	DMC	165	Moss Green-VYLT
	2	DMC	166	Moss Green-MDLT
	2	DMC	300	Mahogany-VYDK
	2	DMC	310	Black
	2	DMC	317	Pewter Gray
	2	DMC	327	Violet-VYDK
	2	DMC	333	Blue Violet-VYDK
	2	DMC	340	Blue Violet-MD
	2	DMC	400	Mahogany-DK
	2	DMC	413	Pewter Gray-DK
	2	DMC	434	Brown-LT
	2	DMC	451	Shell Gray-DK
	2	DMC	520	Fern Green-DK
	2	DMC	524	Fern Green-VYLT
	2	DMC	550	Violet-VYDK
	2	DMC	647	Beaver Gray-MD
	2	DMC	666	Christmas Red-BRT
	2	DMC	699	Christmas Green
	2	DMC	718	Plum
	2	DMC	720	Orange Spice-DK
	2	DMC	727	Topaz-VYLT
	2	DMC	728	Topaz
	2	DMC	738	Tan-VYLT
	2	DMC	754	Peach-LT
	2	DMC	772	Yellow Green-VYLT
	2	DMC	779	Cocoa-DK
	2	DMC	780	Topaz-ULVYDK

Symbol	Strands	Type	Number	Color
	2	DMC	781	Topaz-VYDK
	2	DMC	782	Topaz-DK
	2	DMC	791	Cornflower Blue-VYDK
	2	DMC	792	Cornflower Blue-DK
	2	DMC	797	Royal Blue
	2	DMC	798	Delft Blue-DK
	2	DMC	799	Delft Blue-MD
	2	DMC	801	Coffee Brown-DK
	2	DMC	803	Baby Blue-UL VYDK
	2	DMC	814	Garnet-DK
	2	DMC	817	Coral Red-VYDK
	2	DMC	819	Baby Pink-LT
	2	DMC	820	Royal Blue-VYDK
	2	DMC	823	Navy Blue-DK
	2	DMC	827	Blue-VYLT
	2	DMC	842	Beige Brown-VYLT
	2	DMC	890	Pistachio Green-ULDK
	2	DMC	905	Parrot Green-DK
	2	DMC	912	Emerald Green-LT
	2	DMC	919	Red Copper
	2	DMC	920	Copper-MD
	2	DMC	932	Antique Blue-LT
	2	DMC	938	Coffee Brown-ULDK
	2	DMC	939	Navy Blue-VYDK
	2	DMC	961	Dusty Rose-DK
	2	DMC	966	Baby Green-MD
	2	DMC	975	Golden Brown-DK
	2	DMC	977	Golden Brown-LT
	2	DMC	993	Aquamarine-LT
	2	DMC	996	Electric Blue-MD
	2	DMC	3041	Antique Violet-MD
	2	DMC	3042	Antique Violet-LT
	2	DMC	3078	Golden Yellow-VYLT
	2	DMC	3328	Salmon-DK
	2	DMC	3348	Yellow Green-LT
	2	DMC	3363	Pine Green-MD
	2	DMC	3371	Black Brown
	2	DMC	3608	Plum-VYLT
	2	DMC	3743	Antique Violet-VYLT
	2	DMC	3746	Blue Violet-DK
	2	DMC	3765	Peacock Blue-VYDK
	2	DMC	3766	Peacock Blue-LT

Symbol	Strands	Type	Number	Color
 ❖	2	DMC	3772	Desert Sand-VYDK
 ❖	2	DMC	3787	Brown Gray-DK
 ↑	2	DMC	3799	Pewter Gray-VYDK
 *	2	DMC	3807	Cornflower Blue
 +	2	DMC	3814	Aquamarine
 ○	2	DMC	3822	Straw-LT
 ♦♦	2	DMC	3826	Golden Brown
 x	2	DMC	3836	Grape-LT
 ☾	2	DMC	3838	Lavender Blue-DK
 ↘	2	DMC	3846	Bright Turquoise-LT
 *	2	DMC	3852	Straw-VYDK
 3	2	DMC	3855	Autumn Gold-LT
 *	2	DMC	3860	Cocoa
 z	2	DMC	3861	Cocoa-LT
 =	2	DMC	3862	Mocha Beige-DK
 †	2	DMC	3863	Mocha Beige-MD

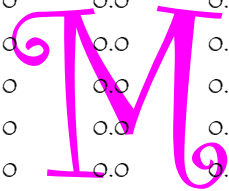
M

Usage Summary

Strands Per Skein: 6

Skein Length: 313.0 in

Type	Number	Full	Half	Quarter	Petite	Back(in)	Str(in)	Spec(in)	French	Bead	Skein Est.
■ DMC 150	677	0	0	0	0	0.0	0.0	0.0	0	0	1.000
■ DMC 152	4471	0	0	0	0	0.0	0.0	0.0	0	0	2.000
■ DMC 154	2357	0	0	0	0	0.0	0.0	0.0	0	0	1.000
■ DMC 160	2912	0	0	0	0	0.0	0.0	0.0	0	0	1.000
■ DMC 161	2113	0	0	0	0	0.0	0.0	0.0	0	0	1.000
■ DMC 165	471	0	0	0	0	0.0	0.0	0.0	0	0	1.000
■ DMC 166	125	0	0	0	0	0.0	0.0	0.0	0	0	1.000
■ DMC 300	5134	0	0	0	0	0.0	0.0	0.0	0	0	2.000
■ DMC 310	18604	0	0	0	0	0.0	0.0	0.0	0	0	6.000
■ DMC 317	2536	0	0	0	0	0.0	0.0	0.0	0	0	1.000
■ DMC 327	992	0	0	0	0	0.0	0.0	0.0	0	0	1.000
■ DMC 333	372	0	0	0	0	0.0	0.0	0.0	0	0	1.000
■ DMC 340	3881	0	0	0	0	0.0	0.0	0.0	0	0	2.000
■ DMC 400	3948	0	0	0	0	0.0	0.0	0.0	0	0	2.000
■ DMC 413	2711	0	0	0	0	0.0	0.0	0.0	0	0	1.000
■ DMC 434	1419	0	0	0	0	0.0	0.0	0.0	0	0	1.000
■ DMC 451	2289	0	0	0	0	0.0	0.0	0.0	0	0	1.000
■ DMC 520	148	0	0	0	0	0.0	0.0	0.0	0	0	1.000
■ DMC 524	1180	0	0	0	0	0.0	0.0	0.0	0	0	1.000
■ DMC 550	1732	0	0	0	0	0.0	0.0	0.0	0	0	1.000
■ DMC 647	938	0	0	0	0	0.0	0.0	0.0	0	0	1.000
■ DMC 666	2279	0	0	0	0	0.0	0.0	0.0	0	0	1.000
■ DMC 699	381	0	0	0	0	0.0	0.0	0.0	0	0	1.000
■ DMC 718	122	0	0	0	0	0.0	0.0	0.0	0	0	1.000
■ DMC 720	1137	0	0	0	0	0.0	0.0	0.0	0	0	1.000
■ DMC 727	1169	0	0	0	0	0.0	0.0	0.0	0	0	1.000
■ DMC 728	2497	0	0	0	0	0.0	0.0	0.0	0	0	1.000
■ DMC 738	3291	0	0	0	0	0.0	0.0	0.0	0	0	1.000
■ DMC 754	4233	0	0	0	0	0.0	0.0	0.0	0	0	2.000
■ DMC 772	242	0	0	0	0	0.0	0.0	0.0	0	0	1.000
■ DMC 779	2316	0	0	0	0	0.0	0.0	0.0	0	0	1.000
■ DMC 780	1225	0	0	0	0	0.0	0.0	0.0	0	0	1.000
■ DMC 781	1436	0	0	0	0	0.0	0.0	0.0	0	0	1.000
■ DMC 782	2381	0	0	0	0	0.0	0.0	0.0	0	0	1.000
■ DMC 791	3799	0	0	0	0	0.0	0.0	0.0	0	0	2.000
■ DMC 792	1728	0	0	0	0	0.0	0.0	0.0	0	0	1.000



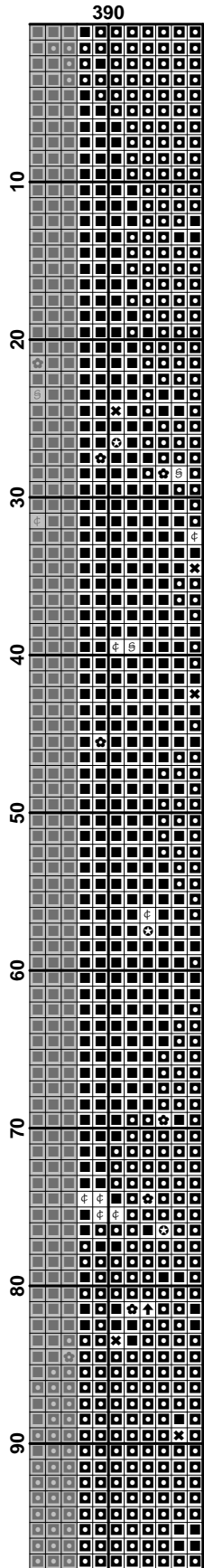
Type	Number	Full	Half	Quarter	Petite	Back(in)	Str(in)	Spec(in)	French	Bead	Skein Est.
■ DMC	797	3385	0	0	0	0.0	0.0	0.0	0	0	1.000
■ DMC	798	2603	0	0	0	0.0	0.0	0.0	0	0	1.000
■ DMC	799	3084	0	0	0	0.0	0.0	0.0	0	0	1.000
■ DMC	801	1890	0	0	0	0.0	0.0	0.0	0	0	1.000
■ DMC	803	2297	0	0	0	0.0	0.0	0.0	0	0	1.000
■ DMC	814	4644	0	0	0	0.0	0.0	0.0	0	0	2.000
■ DMC	817	3236	0	0	0	0.0	0.0	0.0	0	0	1.000
■ DMC	819	6277	0	0	0	0.0	0.0	0.0	0	0	2.000
■ DMC	820	5261	0	0	0	0.0	0.0	0.0	0	0	2.000
■ DMC	823	5366	0	0	0	0.0	0.0	0.0	0	0	2.000
■ DMC	827	1777	0	0	0	0.0	0.0	0.0	0	0	1.000
■ DMC	842	3484	0	0	0	0.0	0.0	0.0	0	0	1.000
■ DMC	890	182	0	0	0	0.0	0.0	0.0	0	0	1.000
■ DMC	905	201	0	0	0	0.0	0.0	0.0	0	0	1.000
■ DMC	912	96	0	0	0	0.0	0.0	0.0	0	0	1.000
■ DMC	919	866	0	0	0	0.0	0.0	0.0	0	0	1.000
■ DMC	920	848	0	0	0	0.0	0.0	0.0	0	0	1.000
■ DMC	932	525	0	0	0	0.0	0.0	0.0	0	0	1.000
■ DMC	938	4214	0	0	0	0.0	0.0	0.0	0	0	2.000
■ DMC	939	13328	0	0	0	0.0	0.0	0.0	0	0	4.000
■ DMC	961	186	0	0	0	0.0	0.0	0.0	0	0	1.000
■ DMC	966	93	0	0	0	0.0	0.0	0.0	0	0	1.000
■ DMC	975	1623	0	0	0	0.0	0.0	0.0	0	0	1.000
■ DMC	977	5668	0	0	0	0.0	0.0	0.0	0	0	2.000
■ DMC	993	84	0	0	0	0.0	0.0	0.0	0	0	1.000
■ DMC	996	187	0	0	0	0.0	0.0	0.0	0	0	1.000
■ DMC	3041	4182	0	0	0	0.0	0.0	0.0	0	0	2.000
■ DMC	3042	3239	0	0	0	0.0	0.0	0.0	0	0	1.000
■ DMC	3078	2307	0	0	0	0.0	0.0	0.0	0	0	1.000
■ DMC	3328	651	0	0	0	0.0	0.0	0.0	0	0	1.000
■ DMC	3348	1105	0	0	0	0.0	0.0	0.0	0	0	1.000
■ DMC	3363	201	0	0	0	0.0	0.0	0.0	0	0	1.000
■ DMC	3371	5522	0	0	0	0.0	0.0	0.0	0	0	2.000
■ DMC	3608	165	0	0	0	0.0	0.0	0.0	0	0	1.000
■ DMC	3743	2407	0	0	0	0.0	0.0	0.0	0	0	1.000
■ DMC	3746	850	0	0	0	0.0	0.0	0.0	0	0	1.000
■ DMC	3765	688	0	0	0	0.0	0.0	0.0	0	0	1.000
■ DMC	3766	1190	0	0	0	0.0	0.0	0.0	0	0	1.000
■ DMC	3772	2792	0	0	0	0.0	0.0	0.0	0	0	1.000
■ DMC	3787	1380	0	0	0	0.0	0.0	0.0	0	0	1.000
■ DMC	3799	1644	0	0	0	0.0	0.0	0.0	0	0	1.000
■ DMC	3807	1053	0	0	0	0.0	0.0	0.0	0	0	1.000

Type	Number	Full	Half	Quarter	Petite	Back(in)	Str(in)	Spec(in)	French	Bead	Skein Est.
■ DMC	3814	100	0	0	0	0.0	0.0	0.0	0	0	1.000
■ DMC	3822	3149	0	0	0	0.0	0.0	0.0	0	0	1.000
■ DMC	3826	1565	0	0	0	0.0	0.0	0.0	0	0	1.000
■ DMC	3836	1538	0	0	0	0.0	0.0	0.0	0	0	1.000
■ DMC	3838	2357	0	0	0	0.0	0.0	0.0	0	0	1.000
■ DMC	3846	24	0	0	0	0.0	0.0	0.0	0	0	1.000
■ DMC	3852	2789	0	0	0	0.0	0.0	0.0	0	0	1.000
■ DMC	3855	2248	0	0	0	0.0	0.0	0.0	0	0	1.000
■ DMC	3860	2548	0	0	0	0.0	0.0	0.0	0	0	1.000
■ DMC	3861	5132	0	0	0	0.0	0.0	0.0	0	0	2.000
■ DMC	3862	3001	0	0	0	0.0	0.0	0.0	0	0	1.000
■ DMC	3863	3738	0	0	0	0.0	0.0	0.0	0	0	2.000

M

	10	20	30	40	50	60	70	80
10
20
30
40
50
60
70
80
90

	80	90	100	110	120	130	140	150
10	☉	☉	☉	☉	☉	☉	☉	☉
20	☉	☉	☉	☉	☉	☉	☉	☉
30	☉	☉	☉	☉	☉	☉	☉	☉
40	☉	☉	☉	☉	☉	☉	☉	☉
50	☉	☉	☉	☉	☉	☉	☉	☉
60	☉	☉	☉	☉	☉	☉	☉	☉
70	☉	☉	☉	☉	☉	☉	☉	☉
80	☉	☉	☉	☉	☉	☉	☉	☉
90	☉	☉	☉	☉	☉	☉	☉	☉



M

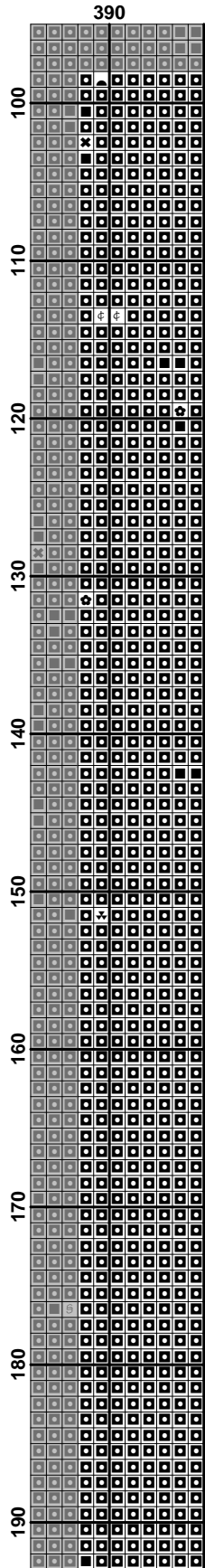
	10	20	30	40	50	60	70	80
100
110
120
130
140
150
160
170
180
190

	80	90	100	110	120	130	140	150
100	+	+	+	+	+	+	+	+
110	+	+	+	+	+	+	+	+
120	+	+	+	+	+	+	+	+
130	+	+	+	+	+	+	+	+
140	+	+	+	+	+	+	+	+
150	+	+	+	+	+	+	+	+
160	+	+	+	+	+	+	+	+
170	+	+	+	+	+	+	+	+
180	+	+	+	+	+	+	+	+
190	+	+	+	+	+	+	+	+

	160	170	180	190	200	210	220	230
100
110
120
130
140
150
160
170
180
190

	240	250	260	270	280	290	300	310
100
110
120
130
140
150
160
170
180
190

	310	320	330	340	350	360	370	380
100
110
120
130
140
150
160
170
180
190



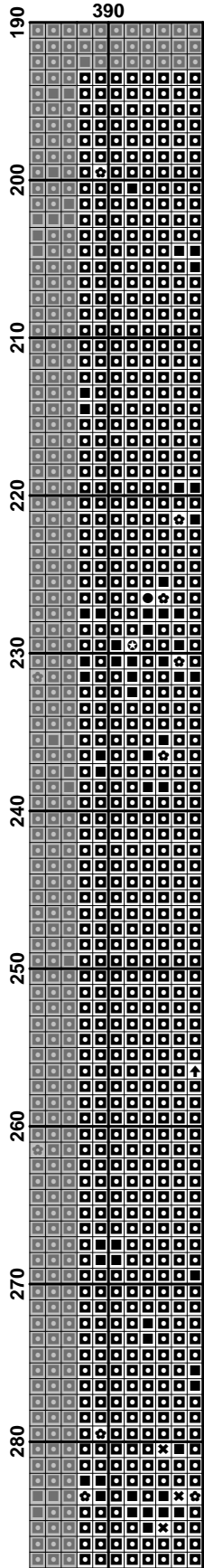
190	10	20	30	40	50	60	70	80
191	192	193	194	195	196	197	198	199
200	201	202	203	204	205	206	207	208
209	210	211	212	213	214	215	216	217
218	219	220	221	222	223	224	225	226
227	228	229	230	231	232	233	234	235
236	237	238	239	240	241	242	243	244
245	246	247	248	249	250	251	252	253
254	255	256	257	258	259	260	261	262
263	264	265	266	267	268	269	270	271
272	273	274	275	276	277	278	279	280
281	282	283	284	285	286	287	288	289
290	291	292	293	294	295	296	297	298
299	300	301	302	303	304	305	306	307
308	309	310	311	312	313	314	315	316
317	318	319	320	321	322	323	324	325
326	327	328	329	330	331	332	333	334
335	336	337	338	339	340	341	342	343
344	345	346	347	348	349	350	351	352
353	354	355	356	357	358	359	360	361
362	363	364	365	366	367	368	369	370
371	372	373	374	375	376	377	378	379
380	381	382	383	384	385	386	387	388
389	390	391	392	393	394	395	396	397
398	399	400	401	402	403	404	405	406
407	408	409	410	411	412	413	414	415
416	417	418	419	420	421	422	423	424
425	426	427	428	429	430	431	432	433
434	435	436	437	438	439	440	441	442
443	444	445	446	447	448	449	450	451
452	453	454	455	456	457	458	459	460
461	462	463	464	465	466	467	468	469
470	471	472	473	474	475	476	477	478
479	480	481	482	483	484	485	486	487
488	489	490	491	492	493	494	495	496
497	498	499	500	501	502	503	504	505
506	507	508	509	510	511	512	513	514
515	516	517	518	519	520	521	522	523
524	525	526	527	528	529	530	531	532
533	534	535	536	537	538	539	540	541
542	543	544	545	546	547	548	549	550
551	552	553	554	555	556	557	558	559
560	561	562	563	564	565	566	567	568
569	570	571	572	573	574	575	576	577
578	579	580	581	582	583	584	585	586
587	588	589	590	591	592	593	594	595
596	597	598	599	600	601	602	603	604
605	606	607	608	609	610	611	612	613
614	615	616	617	618	619	620	621	622
623	624	625	626	627	628	629	630	631
632	633	634	635	636	637	638	639	640
641	642	643	644	645	646	647	648	649
650	651	652	653	654	655	656	657	658
659	660	661	662	663	664	665	666	667
668	669	670	671	672	673	674	675	676
677	678	679	680	681	682	683	684	685
686	687	688	689	690	691	692	693	694
695	696	697	698	699	700	701	702	703
704	705	706	707	708	709	710	711	712
713	714	715	716	717	718	719	720	721
722	723	724	725	726	727	728	729	730
731	732	733	734	735	736	737	738	739
740	741	742	743	744	745	746	747	748
749	750	751	752	753	754	755	756	757
758	759	760	761	762	763	764	765	766
767	768	769	770	771	772	773	774	775
776	777	778	779	780	781	782	783	784
785	786	787	788	789	790	791	792	793
794	795	796	797	798	799	800	801	802
803	804	805	806	807	808	809	810	811
812	813	814	815	816	817	818	819	820
821	822	823	824	825	826	827	828	829
830	831	832	833	834	835	836	837	838
839	840	841	842	843	844	845	846	847
848	849	850	851	852	853	854	855	856
857	858	859	860	861	862	863	864	865
866	867	868	869	870	871	872	873	874
875	876	877	878	879	880	881	882	883
884	885	886	887	888	889	890	891	892
893	894	895	896	897	898	899	900	901
902	903	904	905	906	907	908	909	910
911	912	913	914	915	916	917	918	919
920	921	922	923	924	925	926	927	928
929	930	931	932	933	934	935	936	937
938	939	940	941	942	943	944	945	946
947	948	949	950	951	952	953	954	955
956	957	958	959	960	961	962	963	964
965	966	967	968	969	970	971	972	973
974	975	976	977	978	979	980	981	982
983	984	985	986	987	988	989	990	991
992	993	994	995	996	997	998	999	1000

190	80	90	100	110	120	130	140	150
200								
210								
220								
230								
240								
250								
260								
270								
280								

	160	170	180	190	200	210	220	230
190
200
210
220
230
240
250
260
270
280

	190	200	210	220	230	240	250	260	270	280	290	300	310
190
200
210
220
230
240
250
260
270
280

190	310	320	330	340	350	360	370	380
200								
210								
220								
230								
240								
250								
260								
270								
280								



M

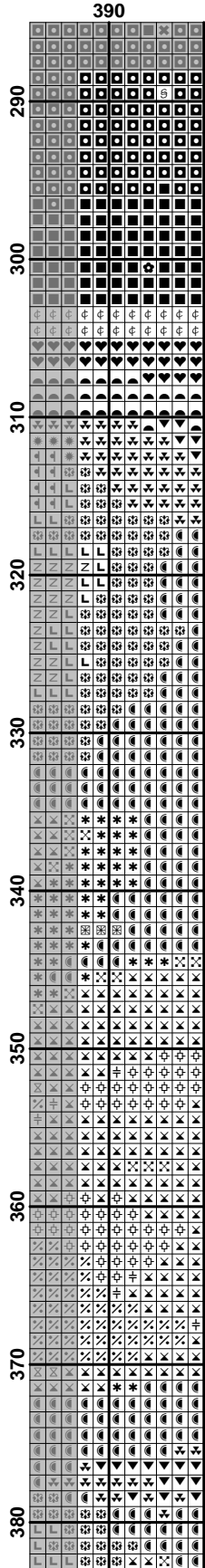
	10	20	30	40	50	60	70	80
290
300
310
320
330
340
350
360
370
380

	80	90	100	110	120	130	140	150
290
300
310
320
330
340
350
360
370
380

	160	170	180	190	200	210	220	230
290
300
310
320
330
340
350
360
370
380

	240	250	260	270	280	290	300	310	320	330	340	350	360	370	380
290
300
310
320
330
340
350
360
370
380

	310	320	330	340	350	360	370	380
290
300
310
320
330
340
350
360
370
380



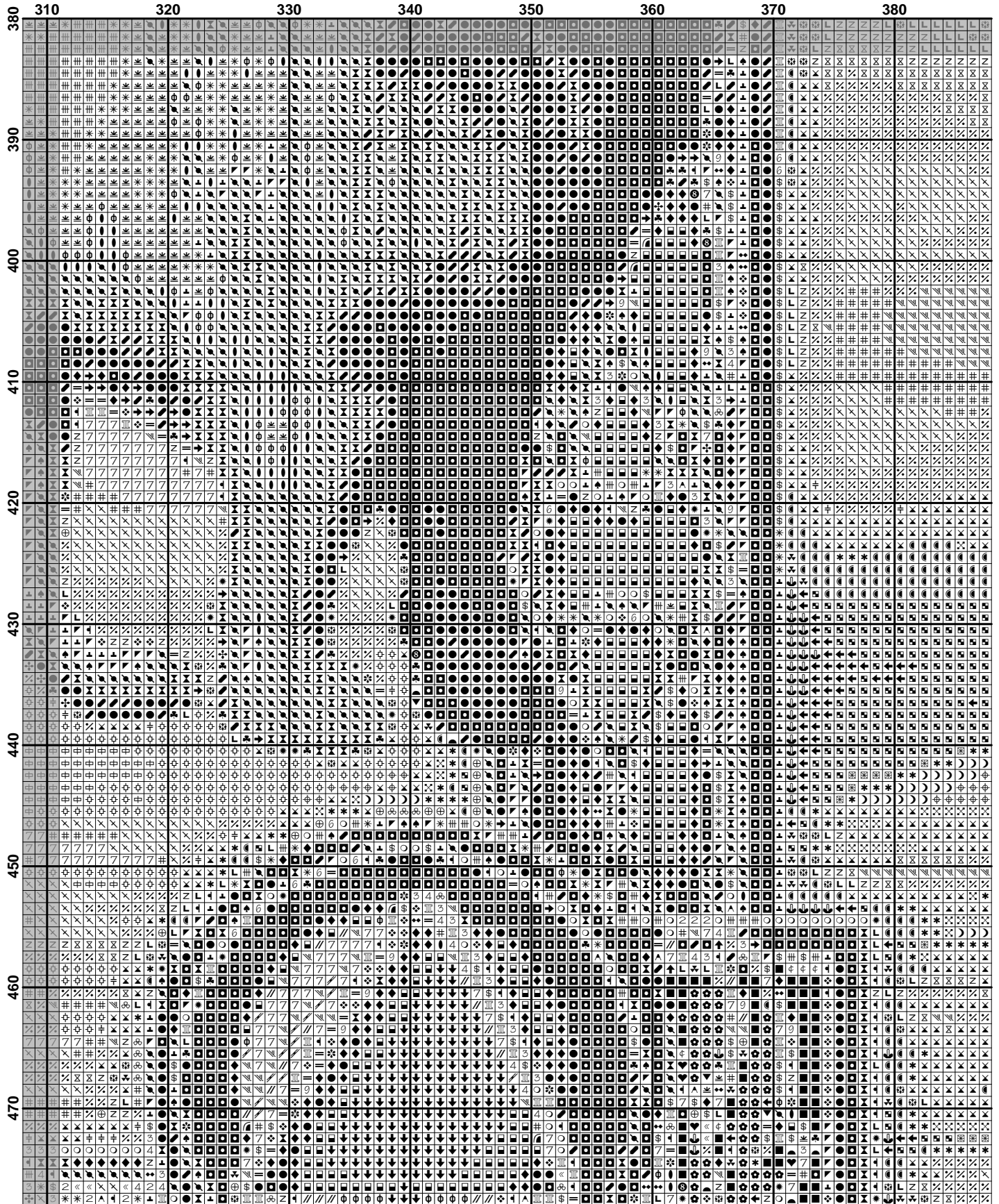
M

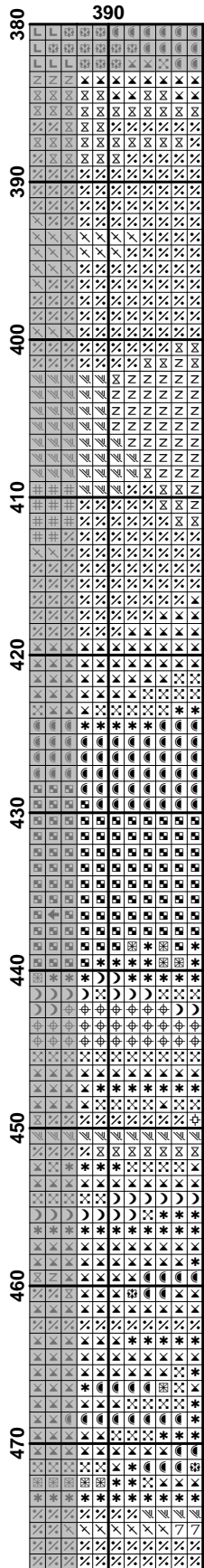
380	10	20	30	40	50	60	70	80
390								
400								
410								
420								
430								
440								
450								
460								
470								

	80	90	100	110	120	130	140	150
380
390
400
410
420
430
440
450
460
470

	160	170	180	190	200	210	220	230
380	[Grid of symbols]							
390	[Grid of symbols]							
400	[Grid of symbols]							
410	[Grid of symbols]							
420	[Grid of symbols]							
430	[Grid of symbols]							
440	[Grid of symbols]							
450	[Grid of symbols]							
460	[Grid of symbols]							
470	[Grid of symbols]							

	240	250	260	270	280	290	300	310
380								
390								
400								
410								
420								
430								
440								
450								
460								
470								





M

