

05/2011 Bubble dress Plus Size

By: burda style magazine

<http://www.burdastyle.com/projects/052011-bubble-dress-plus-size>



Bubble dress sewing pattern. Plus Sizes. burda style magazine patterns FAQ

Materials

stretch satin with matte reverse side

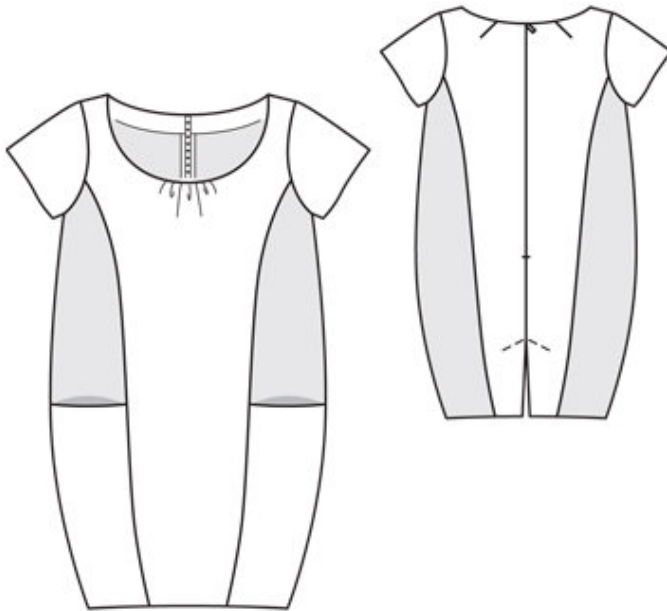
Step 1 — Preparation

Trace the pattern pieces from the pattern sheet.

Seam and hem allowances:

Seams and edges 1.5 cm (5/8 in).

Step 2 — Cutting out



1— 1centre front, on a fold 1x

2— 2side front 2x

3— 3centre back 2x

4— 4side back 2x

5— 5pocket 2x

6— 6sleeve 4x

7— 7front neck facing, on a fold 1x

8— 8back neck facing 2x

9— 9front hem facing, on a fold 1x

10— 10back hem facing 2x

Use the matte wrong side of the satin as the right fabric side of side front and back pieces.

Interfacing: See pattern layout.

Step 3 — Pockets

Turn self-facing on upper edge of each pocket to wrong side, but do not press fold edge. Baste pockets to side fronts at abutting lines.

Step 4 — Darts

Stitch back darts and press toward centre back. Stitch front and back section seams. Press seam allowances open. Gather front neck edge, between \hat{A} -asterisks, to 12 \hat{a} — 12 \hat{a} — 12.5 \hat{a} — 12.5 \hat{a} — 13 cm (43/4 \hat{a} — 43/4 \hat{a} — 5 \hat{a} — 5 \hat{a} — 5 1/4 ins).

Step 5 — Zip

Sew invisible zip to back slit edges. Stitch centre back seam from vent to zip.

Step 6 — Seams

Stitch side seams, shoulder seams, and facing seams. Press seams open.

Step 7 — Face neck edge

Pin facing right sides together with neck edge of dress. At zip slit, turn facing back, approx. 5 mm (3/16 in) before slit edge, and pin to upper edge. At dress slit, turn allowances to outside and pin to upper edge, over facing. Stitch along neck edge. Turn allowances on slit edges to inside. Turn facing up and stitch to seam allowances, as far as possible, close to seam. Turn facing to inside and sew to zip tapes. Sew inside edge of facing to shoulder seams.

Step 8 — Hem

Stitch seams of hem facing. Stitch back ends of hem facing to inside edges of back slit facings, below marking (seam number 10). Fold slit facings to outside, on fold line, and pin to lower back edge, then pin hem facing to lower edge of dress, right sides facing. Stitch to lower edge. Trim seam allowances. Turn facings to inside and press edges. Sew hem facing in place by hand. Topstitch diagonally at top of vent as marked.

Step 9 — Sleeve

For each sleeve, lay two sleeve pieces together, right sides facing. Stitch lower edges together. Spread sleeve units out flat apart and press seam allowances open. Fold sleeves at centre, right side in, and stitch sleeve seams. Press seam allowances open. Fold sleeves at lower edge, wrong side in, and baste upper edges together.

Step 10 — Sleeve caps

Set in sleeves, easing sleeve caps.

05/2011 Bubble dress Plus Size