

Learn to Make a Quilt
From Start to Finish
Instructor Nancy McNally



Learn to Make a Quilt From Start to Finish

In this online video class, you'll learn:

- How to choose the perfect fabrics for your quilt
- Which quilting tools are your "best buys"
- How to cut and piece each quilt block
- How to get a perfect ¼-inch seam allowance every time
- Time-saving tips like chain piecing, marking, pinning and more
- How to assemble a quilt sandwich

This exclusive quilt project is included as part of the class curriculum

QDV11 *Learn to Make a Quilt
From Start to Finish*

Annie's® Crafts

AnniesOnlineClasses.com

Bric & Stones
Quilt



TOASTY WARM SNOWMAN

By Julie Weaver

A warm snowman might spell trouble in real-life, but in fabric we can enjoy this contradiction all winter long.

Project Specifications

Skill Level: Beginner

Snowman Size: Approximately 6" x 12"

Materials

- ½ yard unbleached muslin
- ½ yard plaid Berber-type polar fleece for coat
- ½ yard solid Berber-type polar fleece for hat, coat trim and scarf
- 2 cups of weight product (plastic pebbles, silica sand, etc.)
- Red and black fine-line permanent markers
- Polyester fiberfill
- Powdered cosmetic blush
- Cotton swab
- 3 novelty buttons
- Cool temperature hot-glue gun and glue
- All-purpose threads to match fabrics
- Basic sewing supplies and tools

Instructions

Note: Patterns include ¼" seam allowance.

Step 1. Cut fabrics as directed on patterns.

Step 2. Trace facial features onto one body piece with pencil. With right sides together, sew around body, leaving open where indicated on pattern. Bring side and bottom seams together. Pull corner out to a point as shown in Fig. 1. With both seams together, stitch 1" from corner point across both seams. Repeat for second side; trim seams.

Step 3. Turn body right side out. Fill bottom with weight product. Stuff the rest of the body firmly with polyester fiberfill. Close opening with hand stitches.

Step 4. With right sides together, sew around arms leaving tops open. Stuff firmly to line indicated on pattern. Bring seams together and stitch tops. Sew or glue to snowman shoulders.

Step 5. Trace and fill in facial features with red and black permanent markers.

Step 6. From solid polar fleece cut a strip 8" x 18",

with the 8" width on the stretch of the fabric. Right sides facing, fold in half lengthwise and sew the long edges. With the tube still wrong side out, turn up one open end ¾" and sew ¼" from raw edge. Tie the other end tightly about 1" from the raw edge. Turn hat right side out. Turn hemmed edge up about 2" to form a cuff. Tie other end tightly to form a ball at the end of the hat.

Step 7. From solid polar fleece cut a piece 3" x 18" for the scarf. Make 1" snips ¼" apart on each end for fringe.

Step 8. Cut up the center of coat front. From solid polar fleece cut two strips 2½" x 4" for sleeve trim. Right sides together, sew trim to end of each sleeve. Cut even with sleeve if necessary. Fold trim out.

Step 9. Right sides together, sew side, sleeve and trim seams. Turn coat right side out. Fold trim in half to inside of coat and slip-stitch in place.

Step 10. From solid polar fleece cut a strip 2½" x 19". Right sides together, sew trim to bottom of coat. Fold trim in half to the inside and slip-stitch in place. Cut trim even with coat front opening, if necessary.

Step 11. From solid polar fleece cut a strip 2½" x 8". Right sides together, sew trim to left front side of coat. Fold trim in half to the inside and slip-stitch in place. Cut trim even with coat bottom, if necessary. Slip-stitch bottom of front trim.

Step 12. Slip coat on snowman. Gather neck edge slightly, if necessary. Sew novelty buttons to front trim through all thicknesses. Position hat on head and glue to secure. Tie scarf around neck. Blush cheeks. ✂

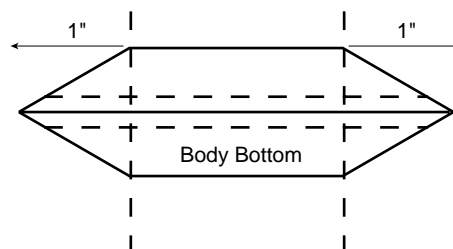
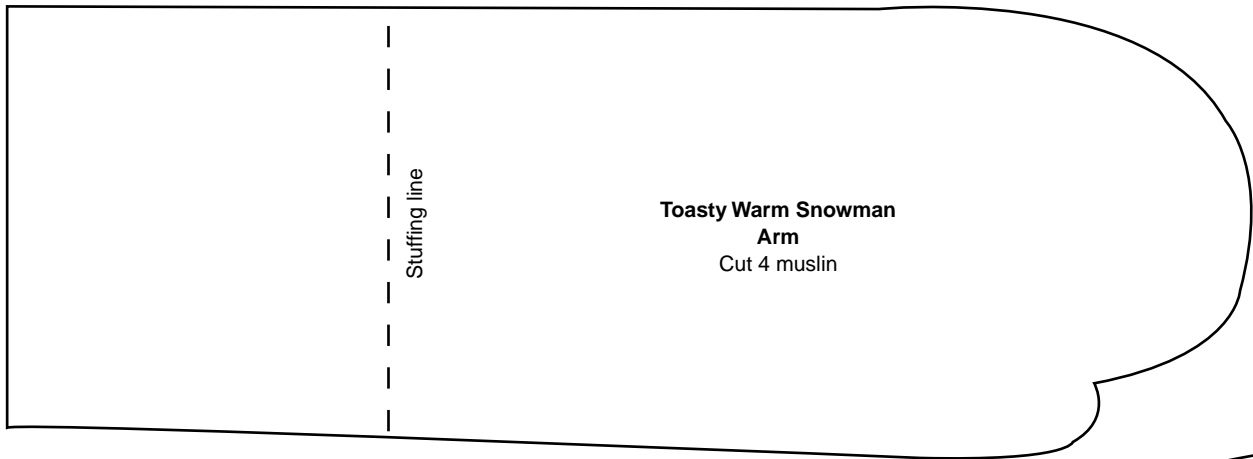


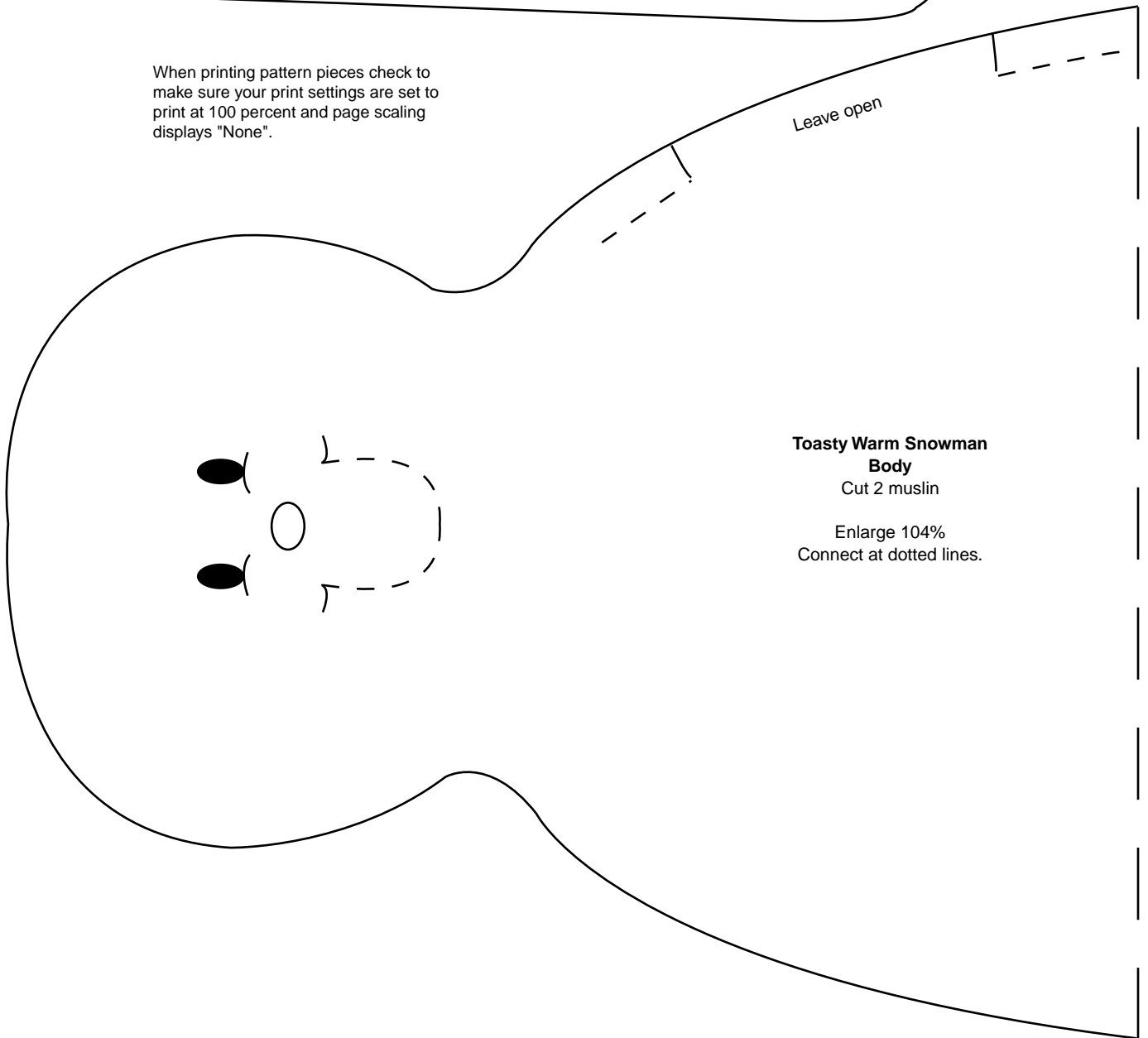
Fig. 1
Sew across seams as shown to create flat snowman bottom.



Toasty Warm Snowman



When printing pattern pieces check to make sure your print settings are set to print at 100 percent and page scaling displays "None".



Fold (Shoulder Seam)

**Toasty Warm Snowman
Coat**

Cut 1 plaid on folds

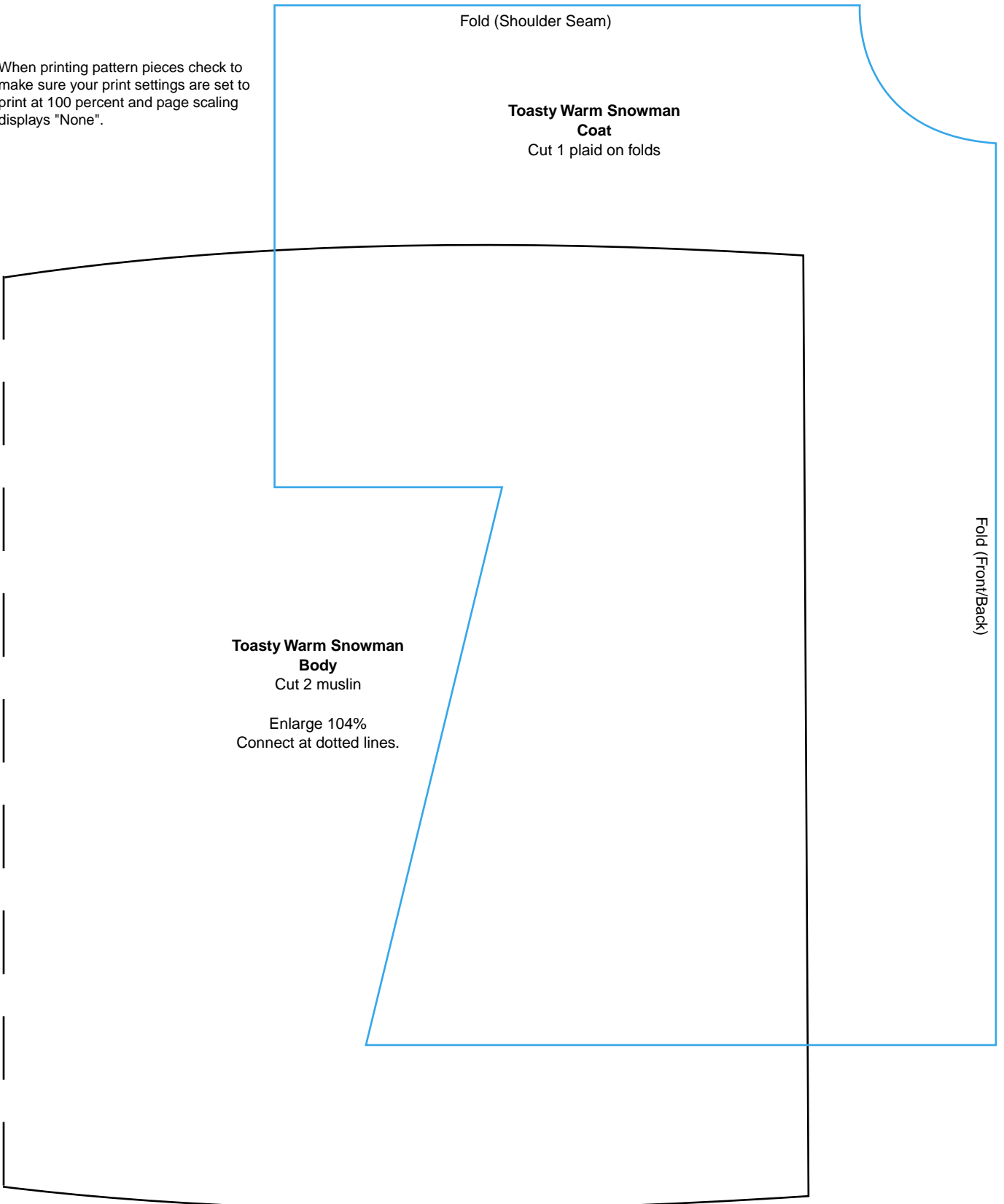
When printing pattern pieces check to make sure your print settings are set to print at 100 percent and page scaling displays "None".

Fold (Front/Back)

**Toasty Warm Snowman
Body**

Cut 2 muslin

Enlarge 104%
Connect at dotted lines.



NEW!

From
Annie's

Seasonal TABLE TOPPERS

20 Quick-to-Stitch Projects



- Easy for beginners, fun for the experienced
- Change your table decor for every season

151056
\$14.95



Order today at AnniesCatalog.com