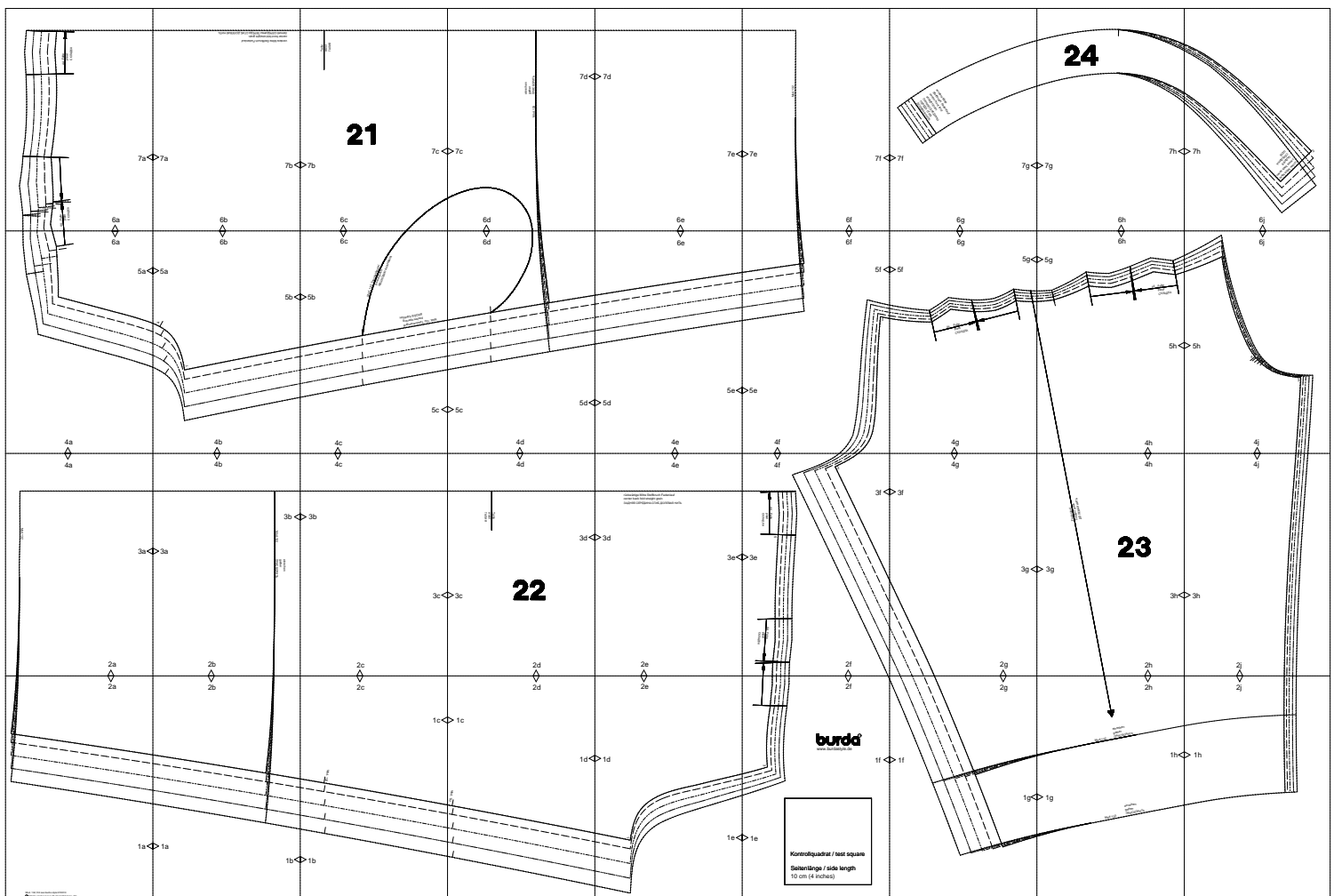


burda Download-Schnitt

Modell 133 Burda Style 07/2010

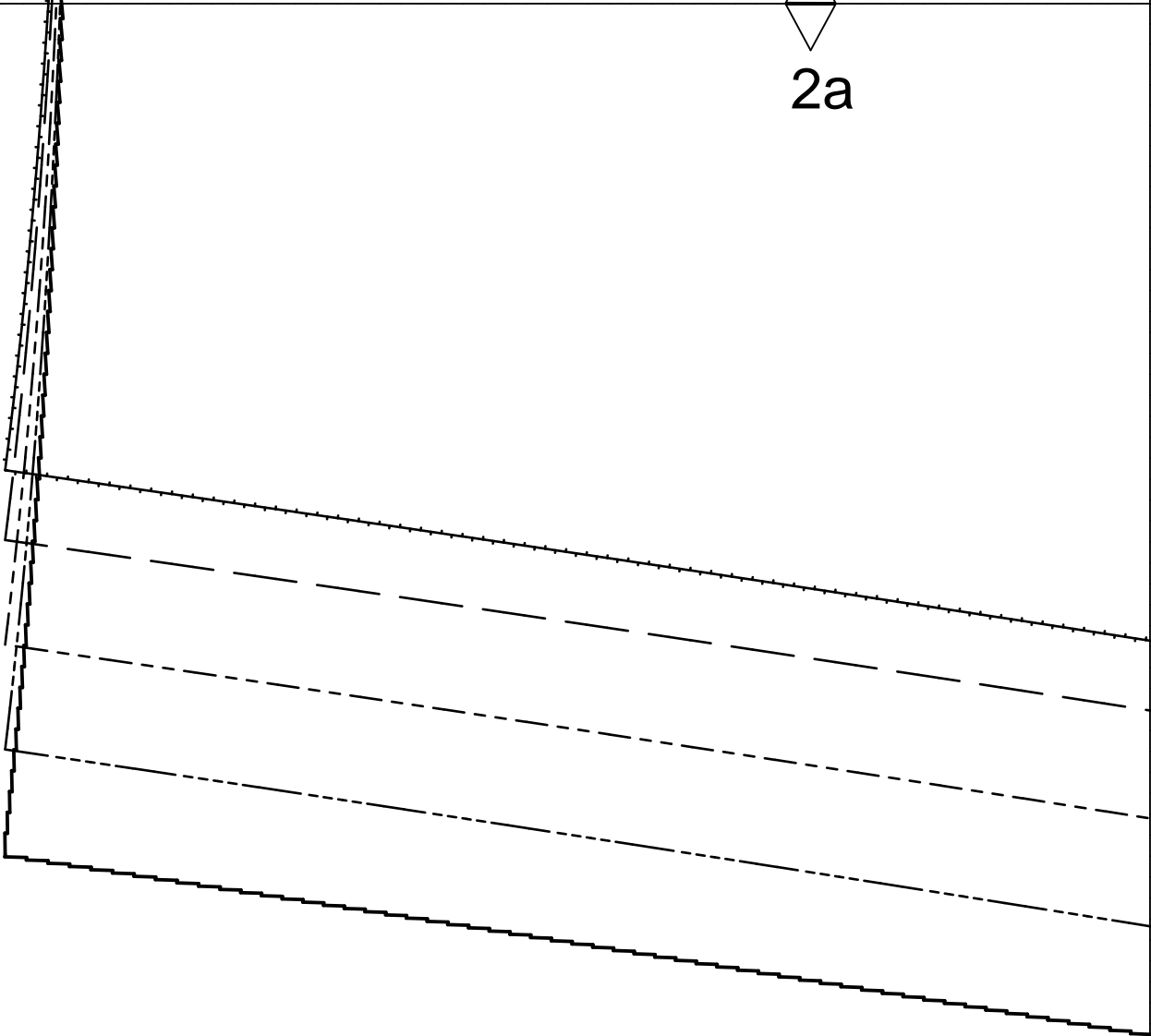


Copyright 2010 by Verlag Aenne Burda GmbH & Co. KG, Am Kestendamm 1, D-77652 Offenburg

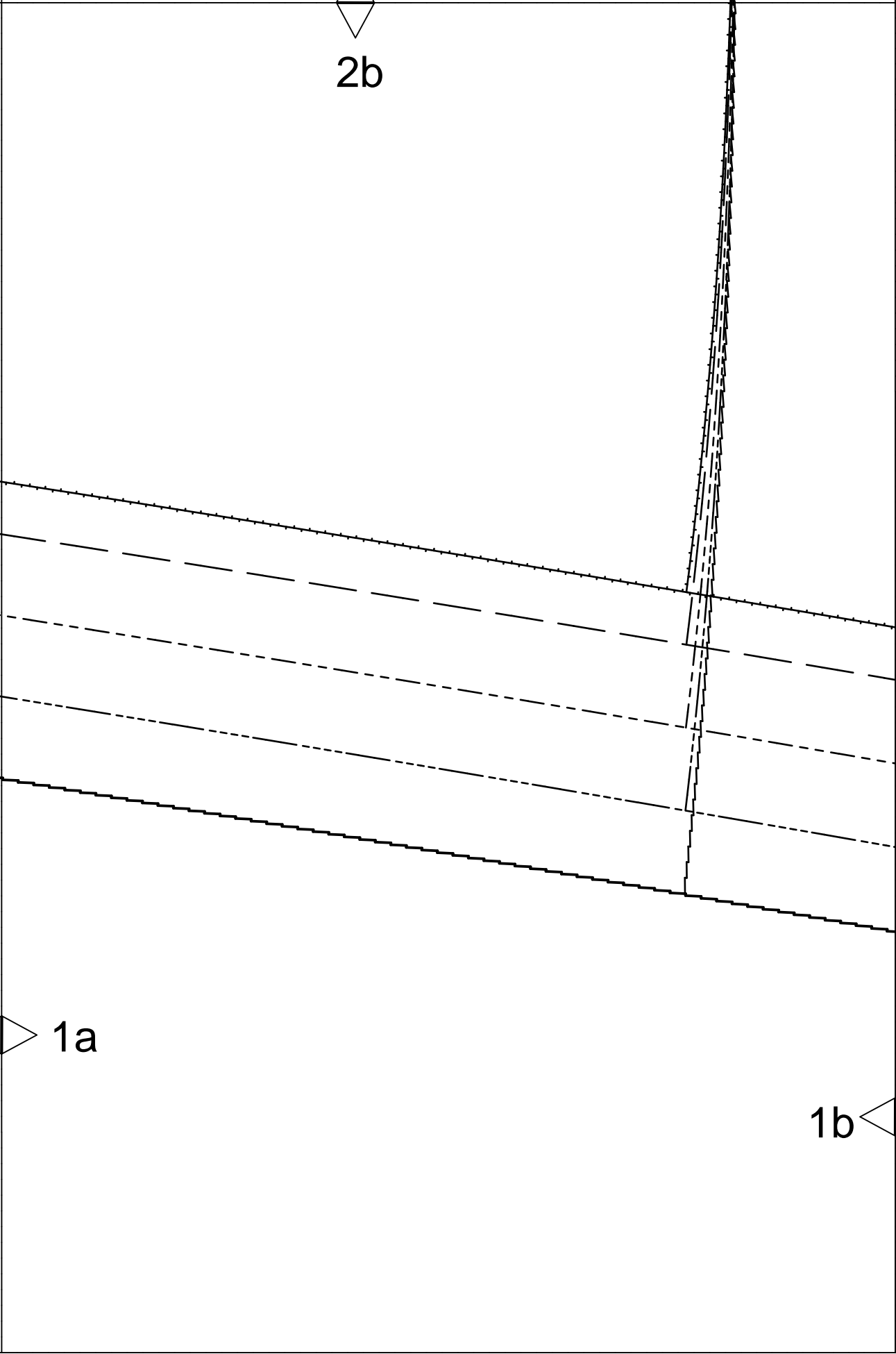
Sämtliche Modelle, Schnittteile und Zeichnungen stehen unter Urberschutz, gewerbliches Nacharbeiten ist untersagt.

Der Verlag haftet nicht für Schäden, die durch unsachgemäße Handhabung des Schnitts, der Materialien, unsachgemäße Ausführung der Tipps und Anleitungen oder unsachgemäße Nutzung der Modelle entstehen.

2a



1a



2b

1a

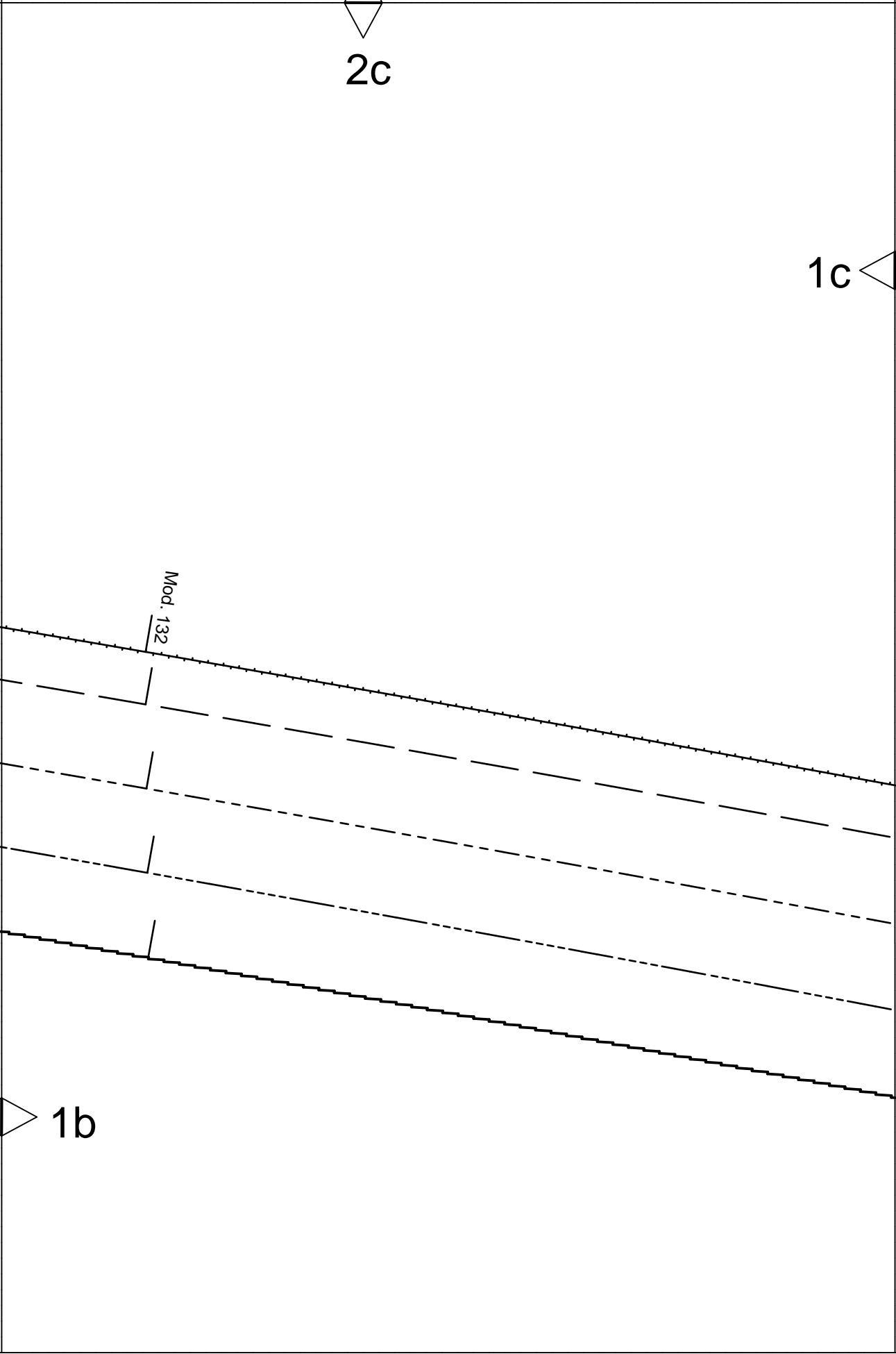
1b

2c

1c

Mod. 132

1b

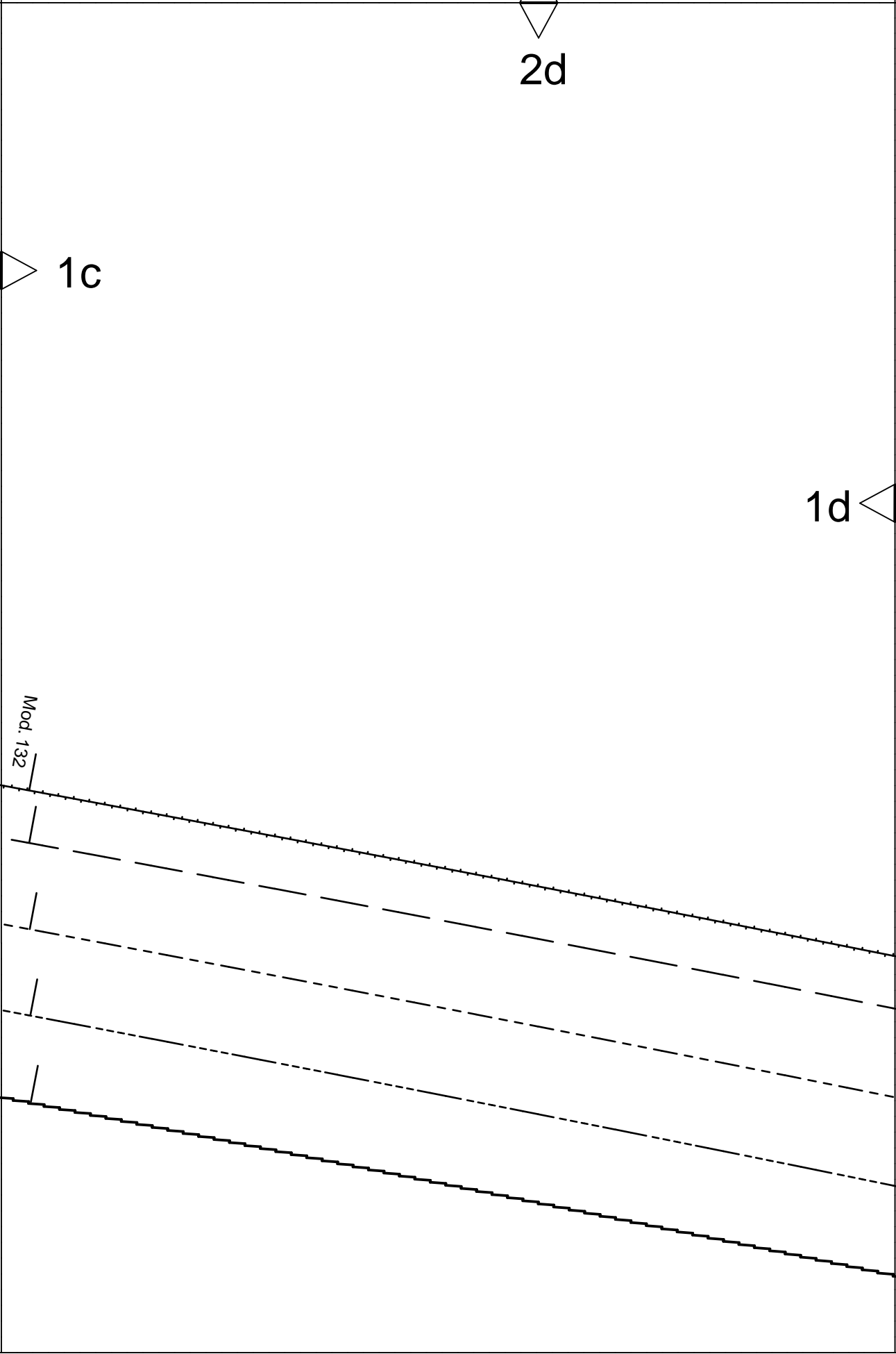


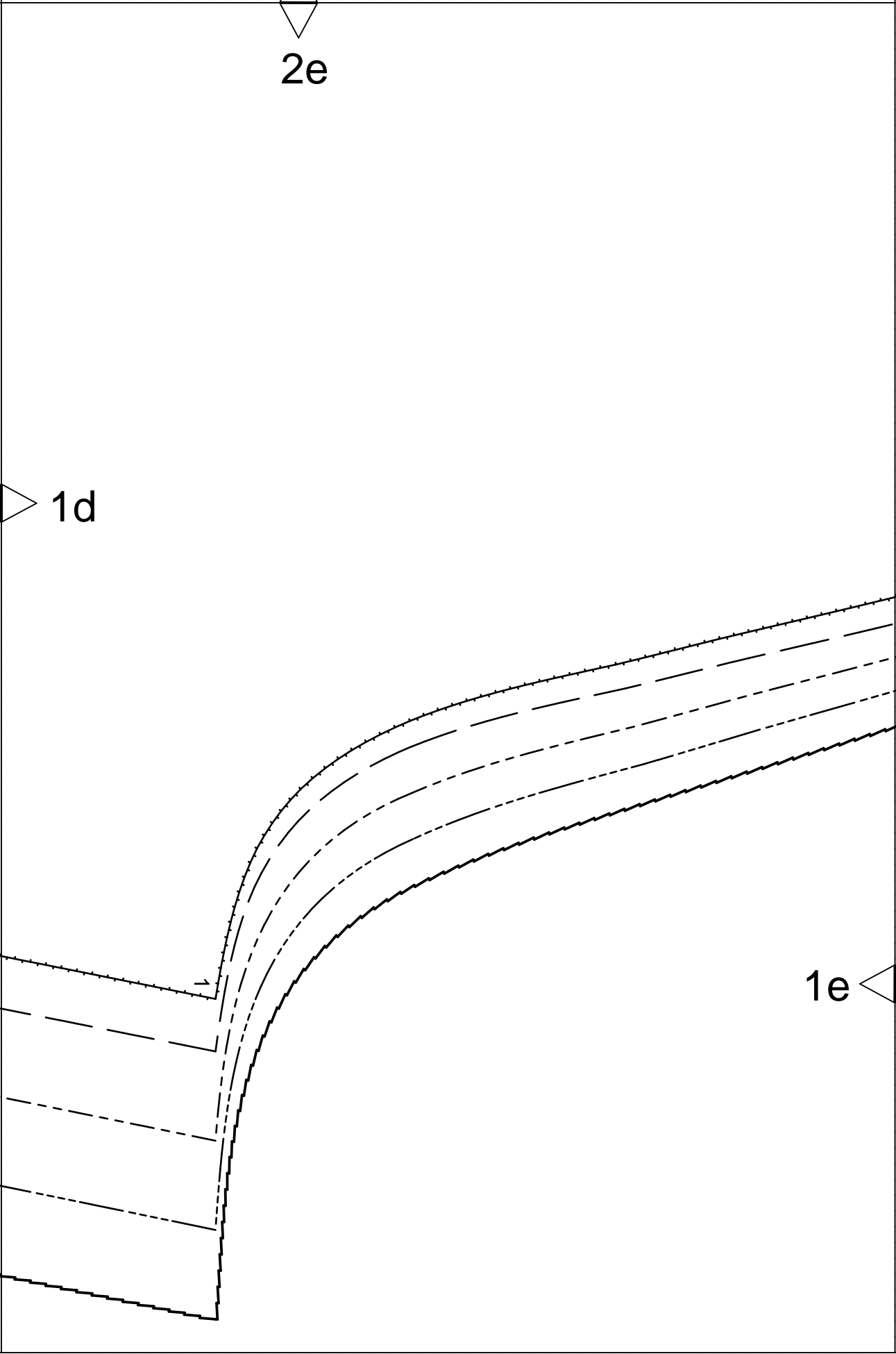
2d

1c

1d

Mod. 132





2e

1d

1e



2f

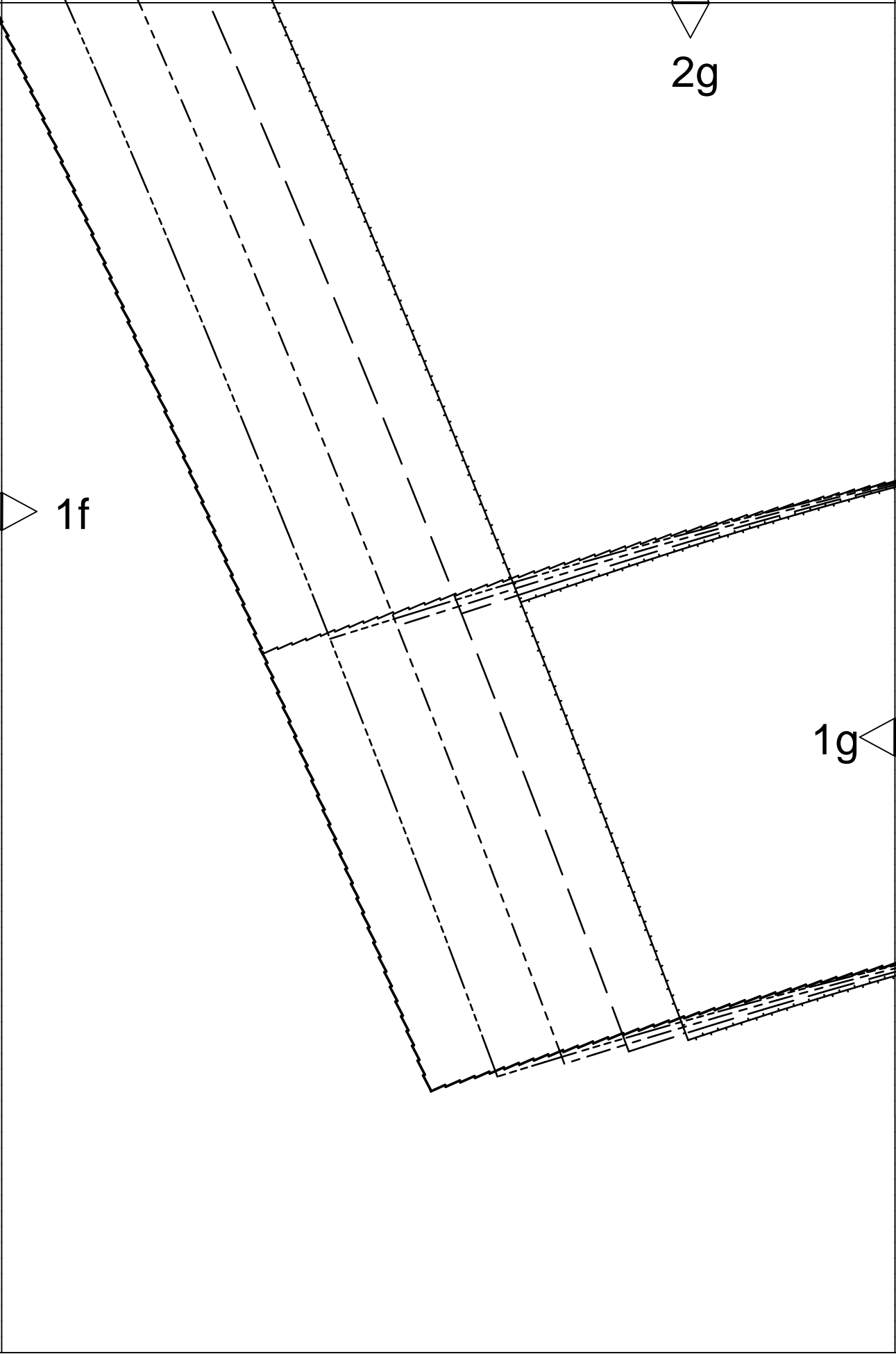
burda[®]
www.burdastyle.de

1f

1e

Kontrollquadrat / test square

Seitenlänge / side length
10 cm (4 inches)



2h



einreihen
gather
ПРИСБОРИТЬ

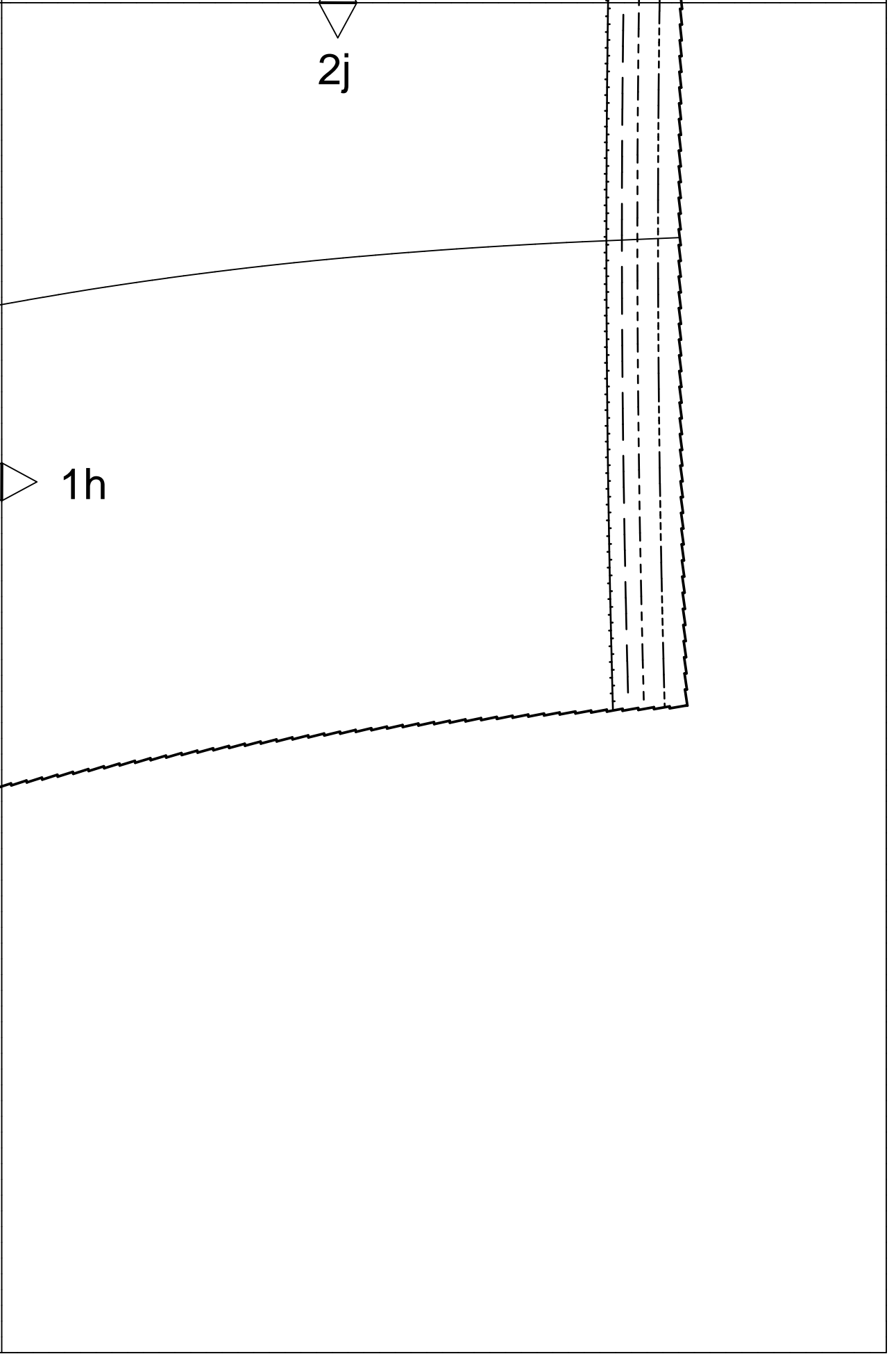
Mod.132

1h

1g

einreihen
gather
ПРИСБОРИТЬ

Mod.133



4a



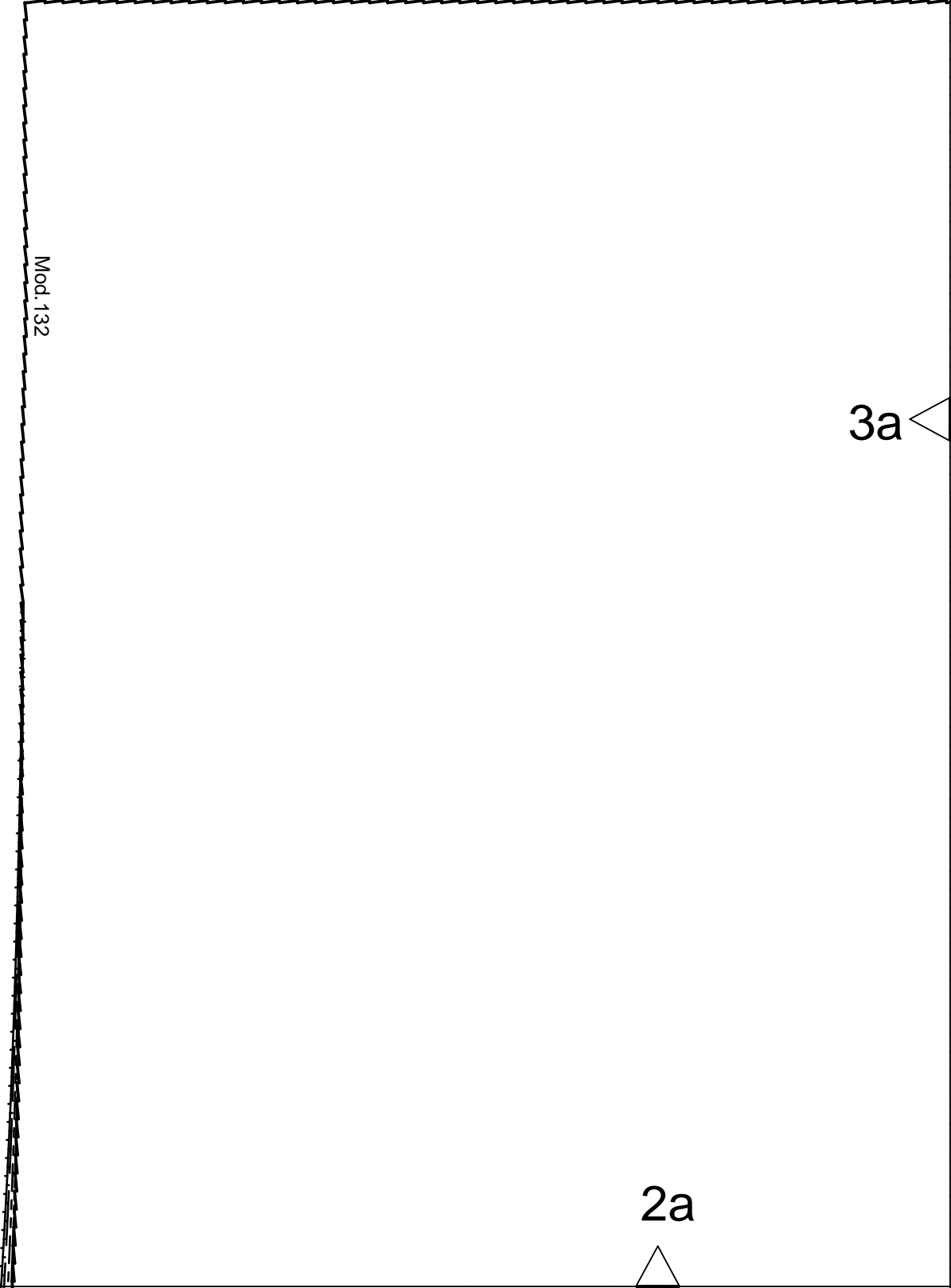
3a



2a



Mod. 132



4b

3b

Mod. 133

einreihen
gather
ПРИБОРИТЬ

3a

2b



4c

3b

3c

2c

4d

Taille
waist
ТАЛИЯ

3d

22

3c

2d



4e

rückwärtige Mitte Stoffbruch Fadenlauf
center back fold straight grain
ЗАДНЯЯ СЕРЕДИНА СГИБ ДОЛЕВАЯ НИТЬ



3d

3e 

2e



4f

3f

2

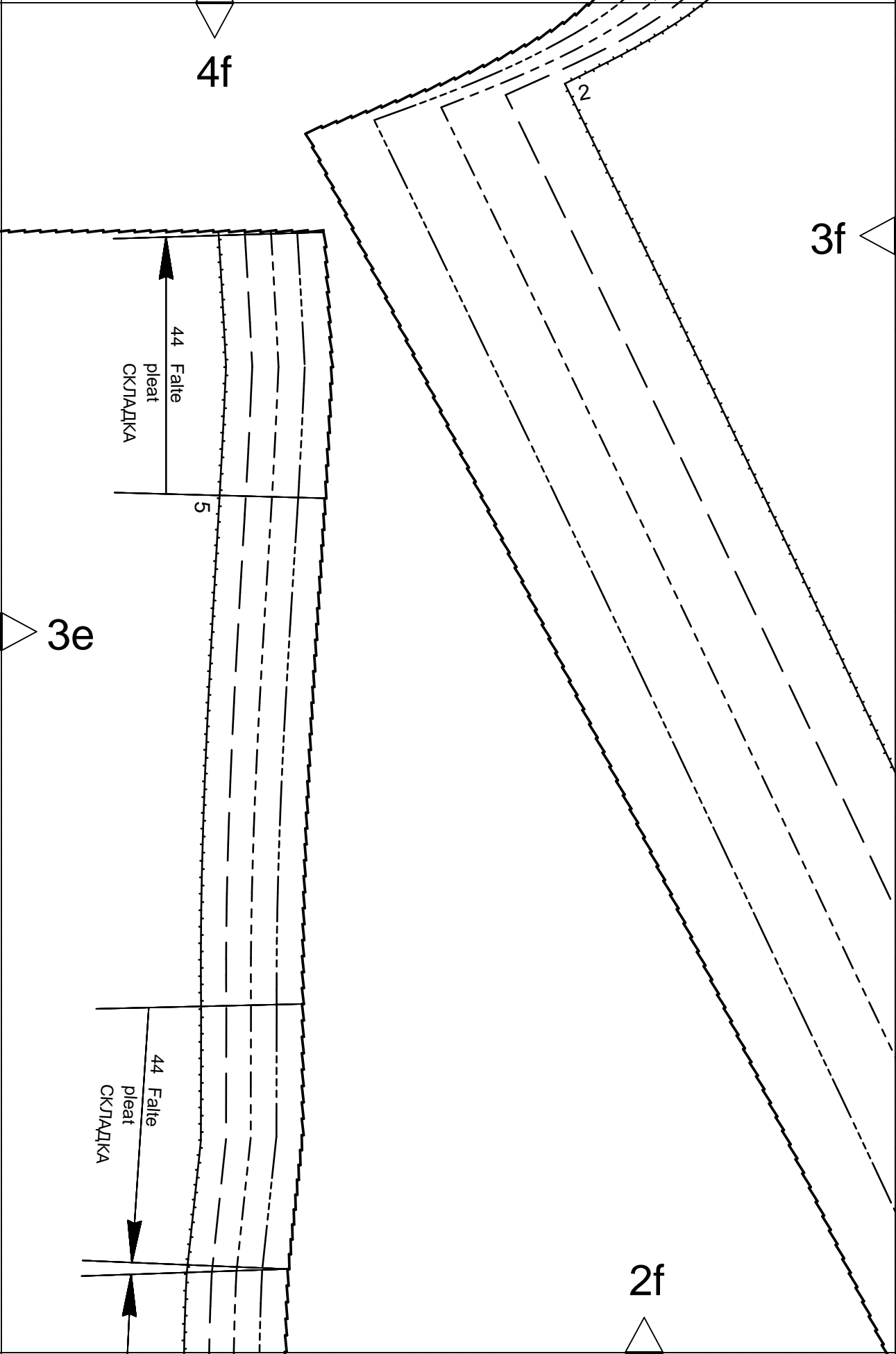
3e

44 Falte
pleat
СКЛАДКА

5

44 Falte
pleat
СКЛАДКА

2f

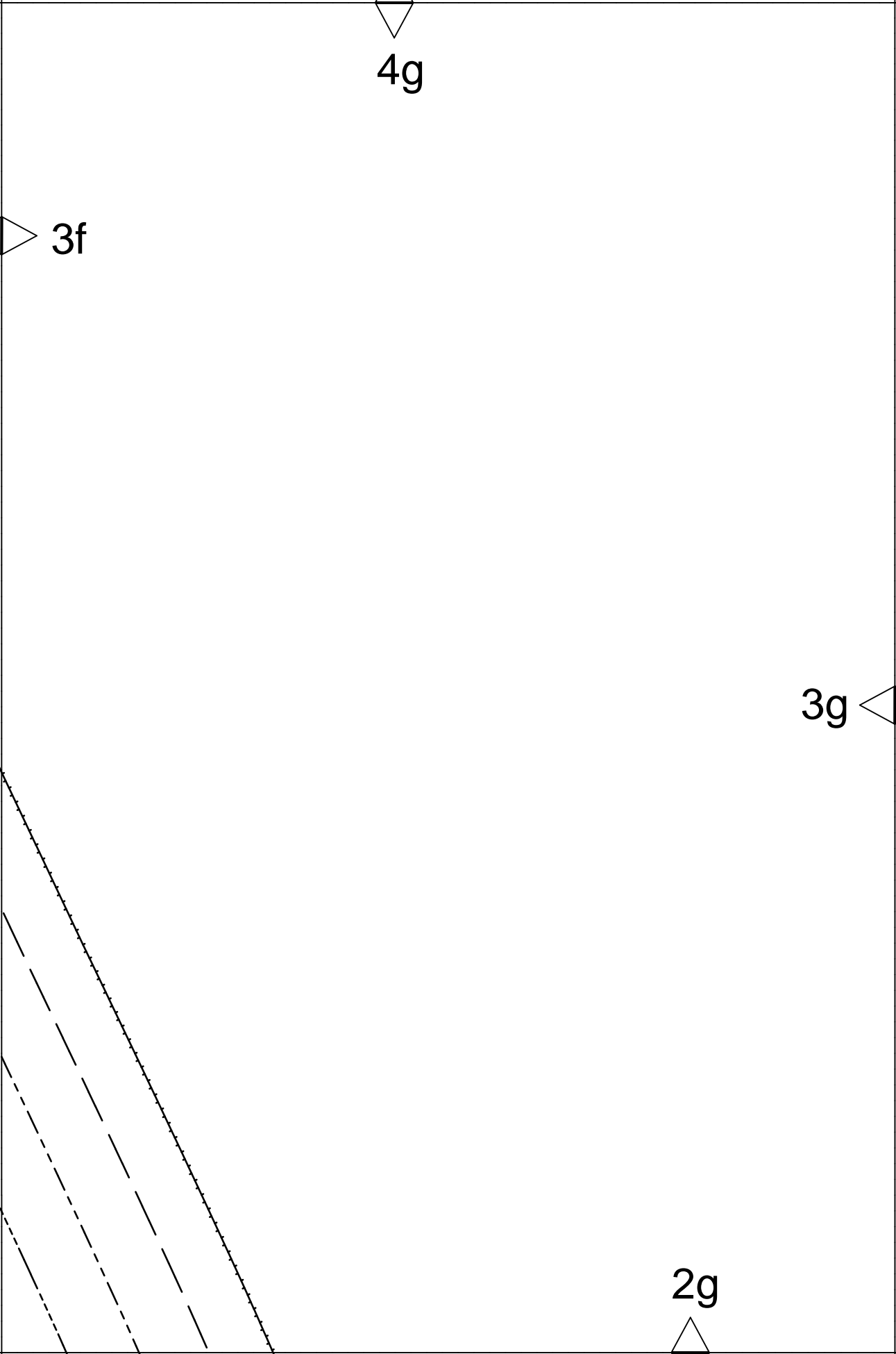


4g

3f

3g

2g



4h

Fadenlauf
straight grain
ДОЛЕВАЯ НИТЬ

23

3g

3h

2h

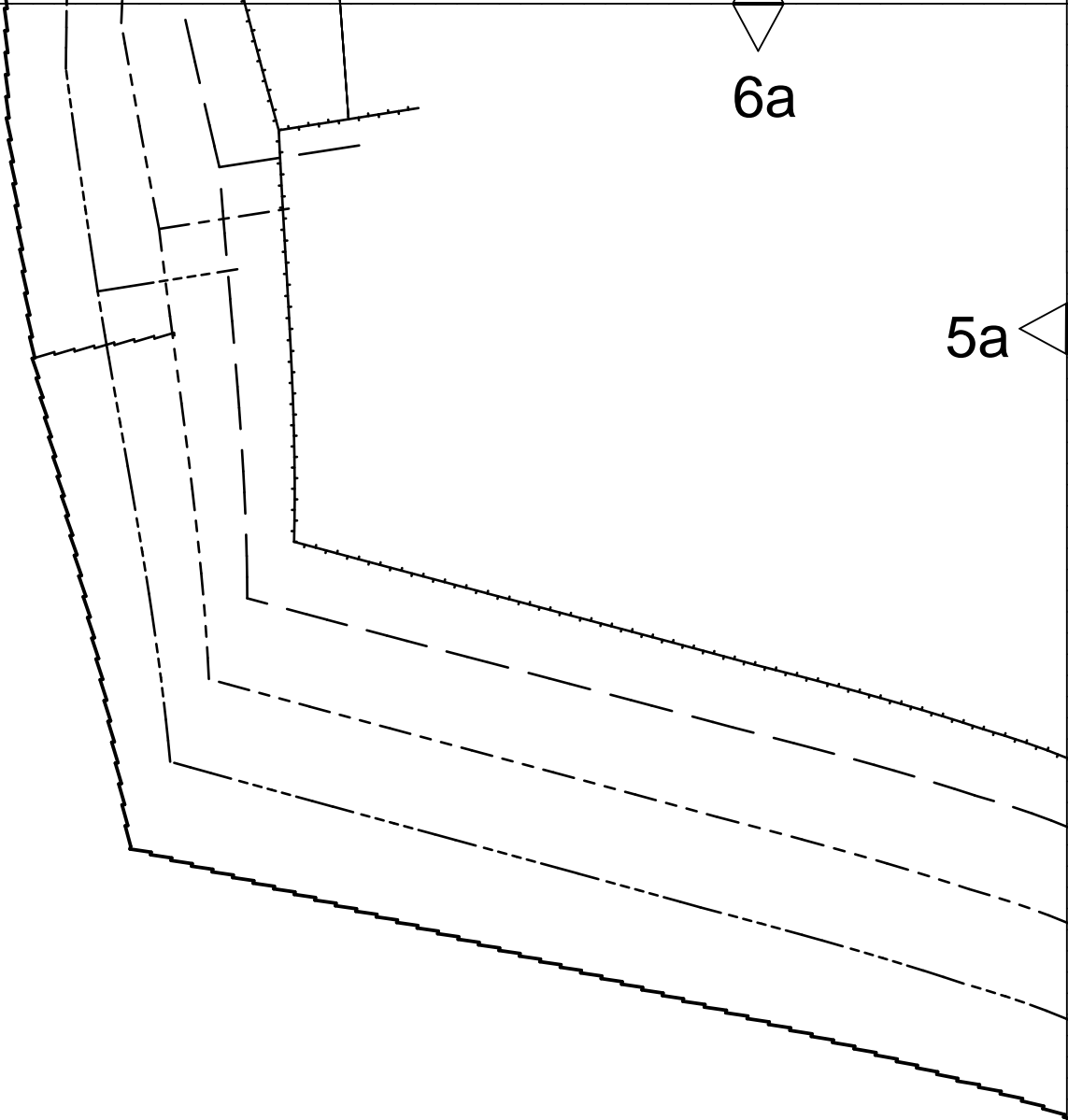


A diagram within a rectangular frame. On the right side, a vertical structure consists of several parallel lines: a solid line on the far right, a dashed line, a solid line, a dashed line, a solid line, and a solid line on the far left. The lines are slightly slanted. Three labels are present: '2j' at the bottom center with an upward-pointing triangle, '3h' on the left side with a rightward-pointing triangle, and '4j' at the top center with a downward-pointing triangle.

4j

3h

2j



6a

5a

4a

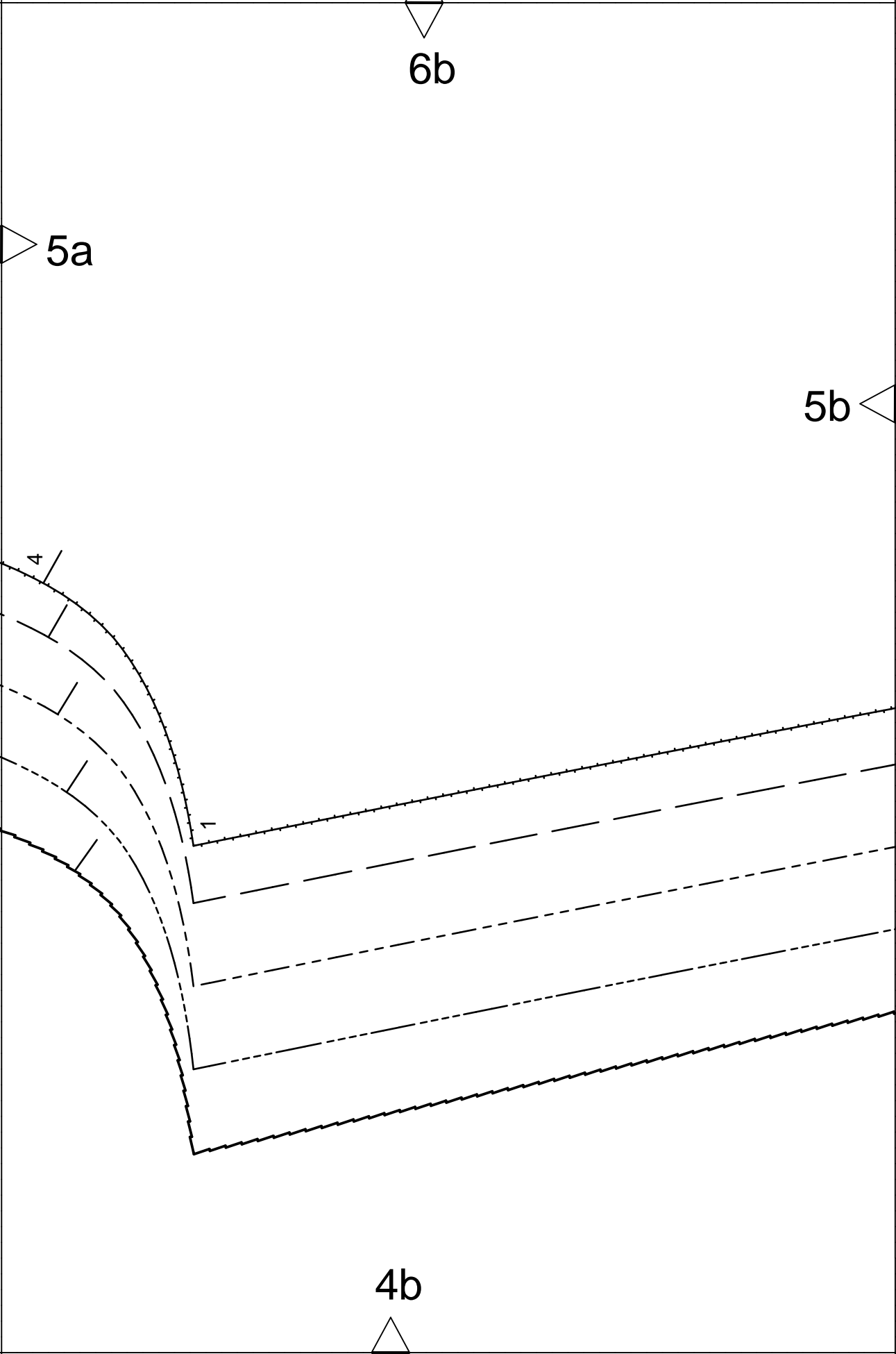
6b

5a

5b

4

4b



6c

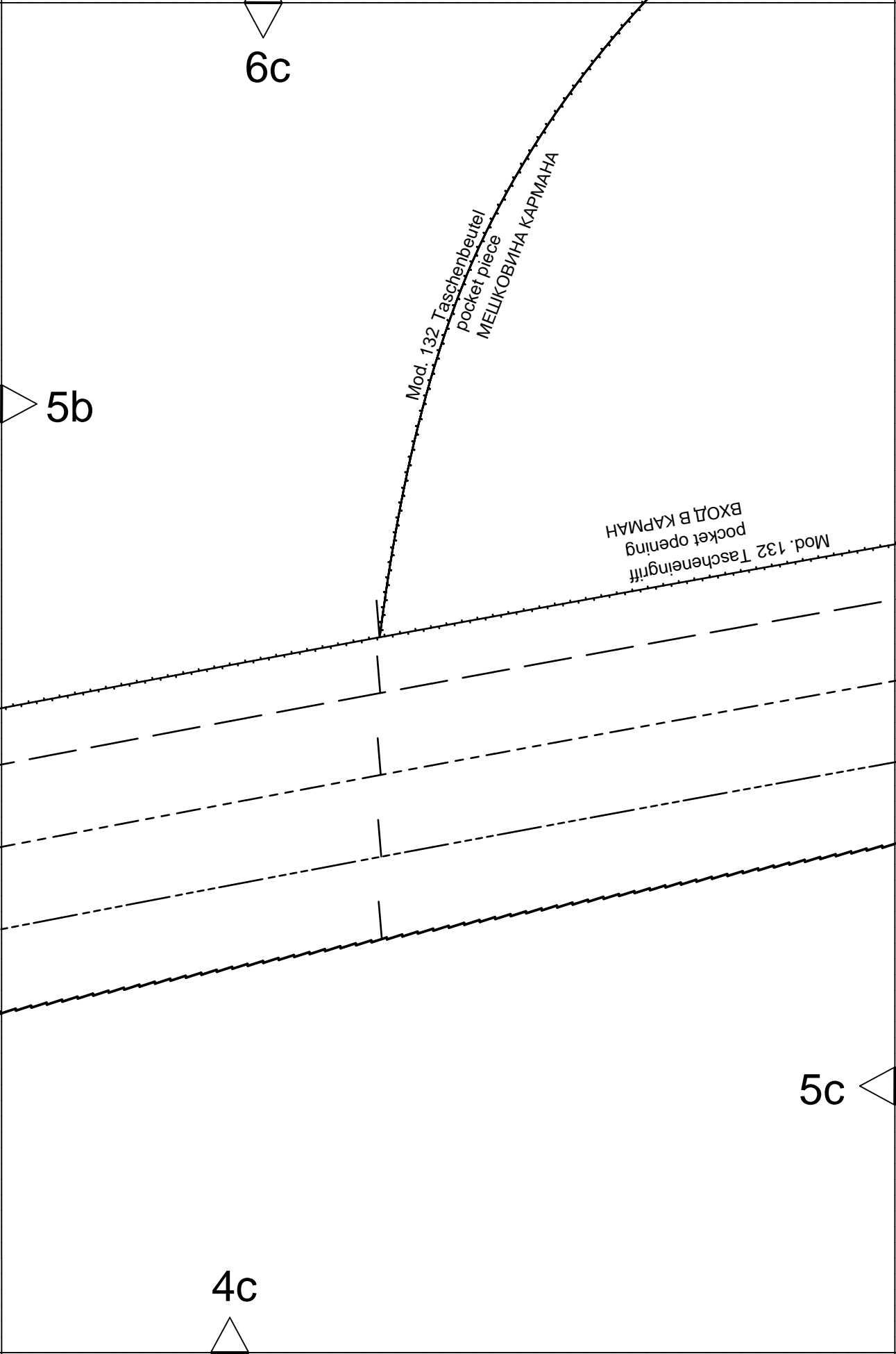
Mod. 132 Taschenbeutel
pocket piece
МЕШКОВИНА КАРМАНА

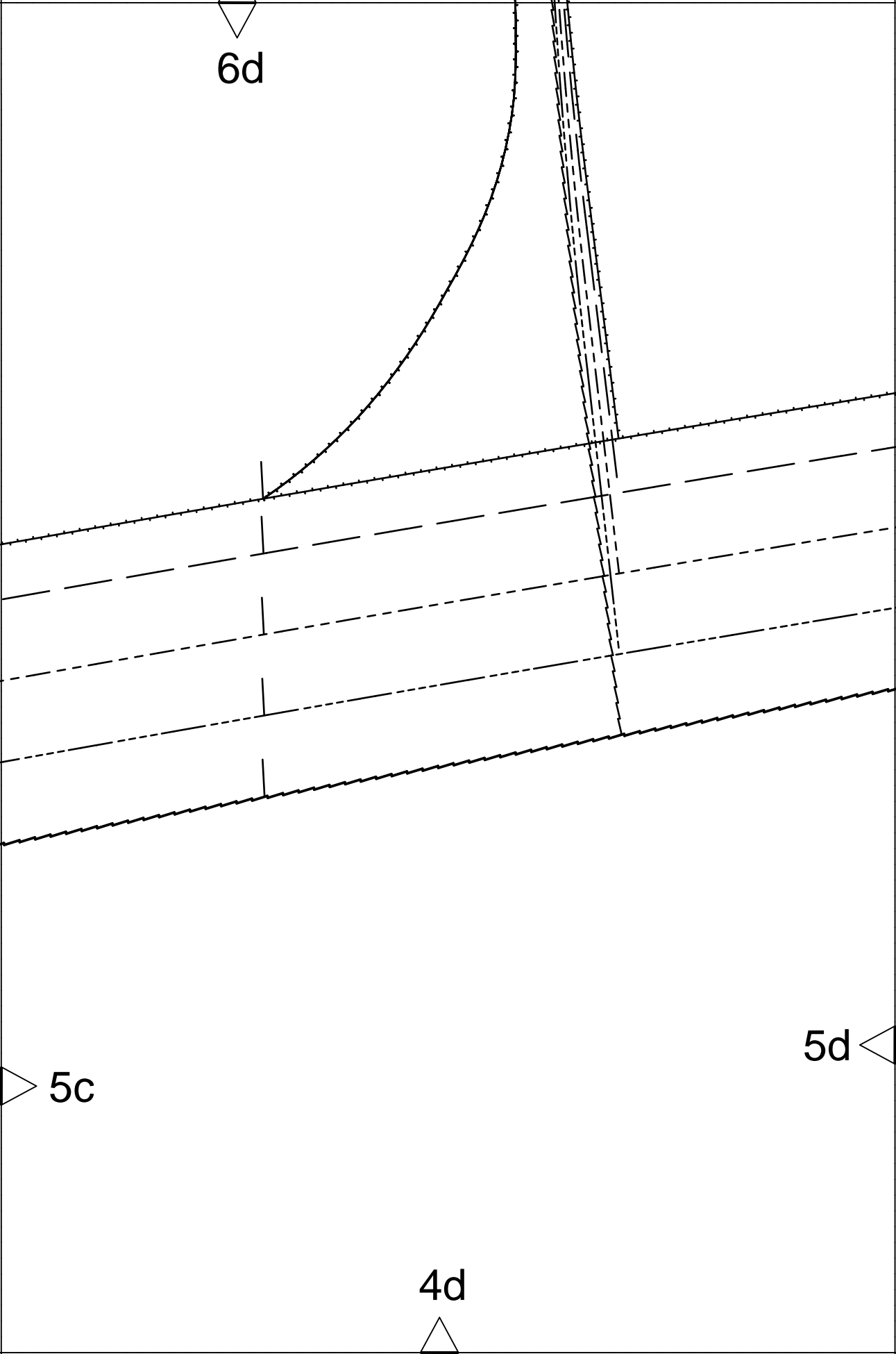
Mod. 132 Tascheneingriff
pocket opening
ВХОД В КАРМАН

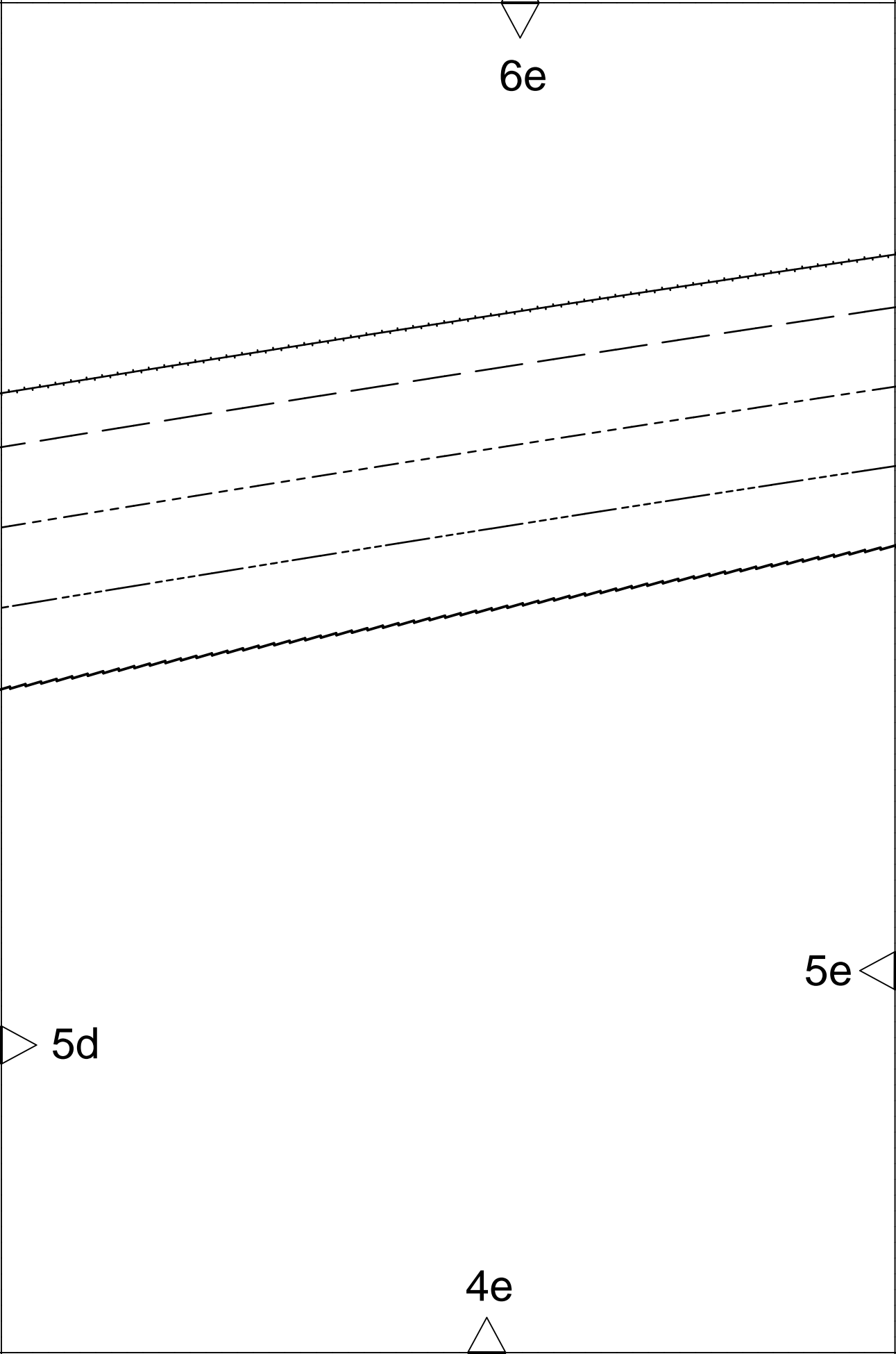
5b

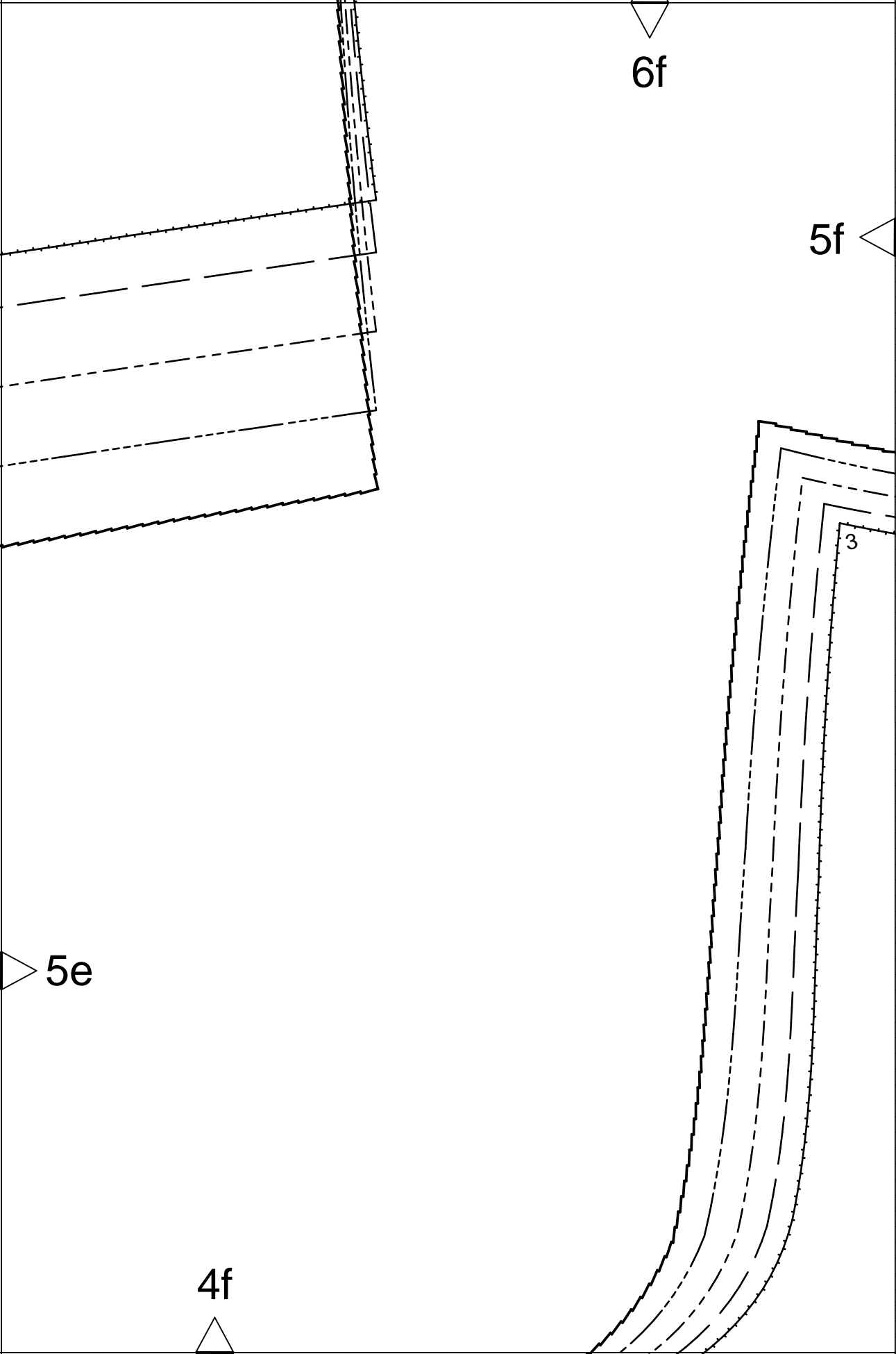
5c

4c





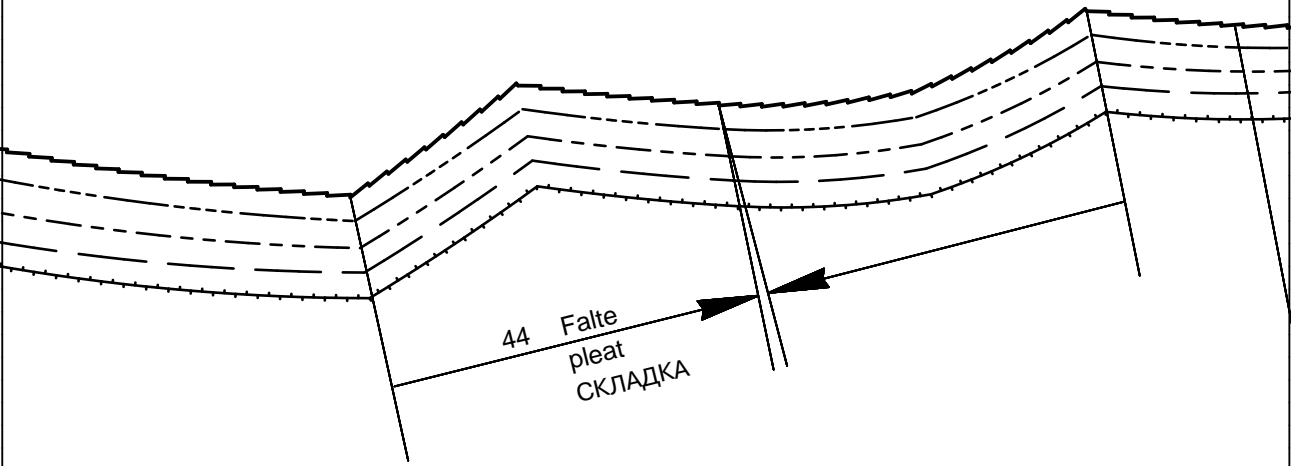




6g

5g

5f



4g

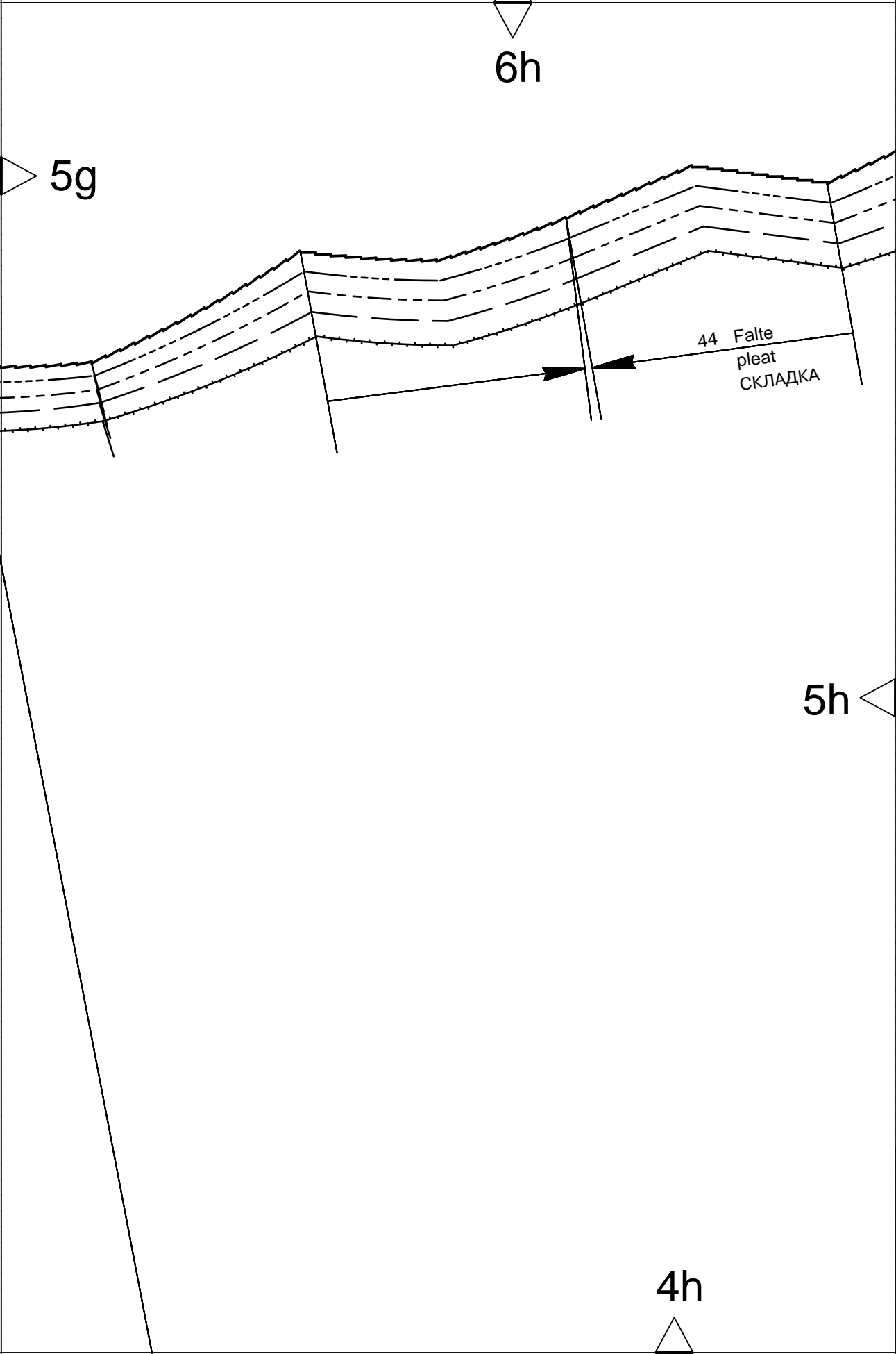
6h

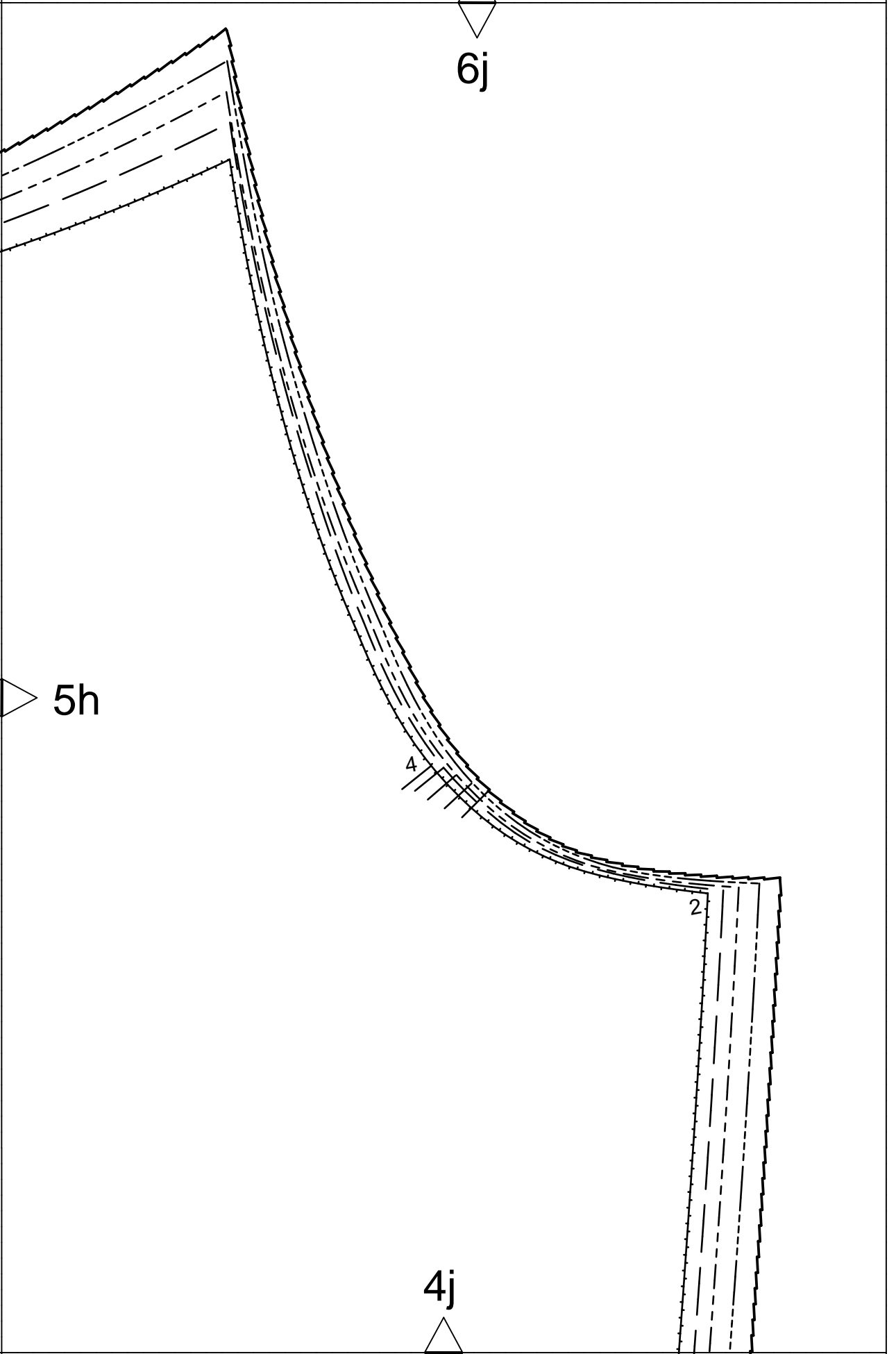
5g

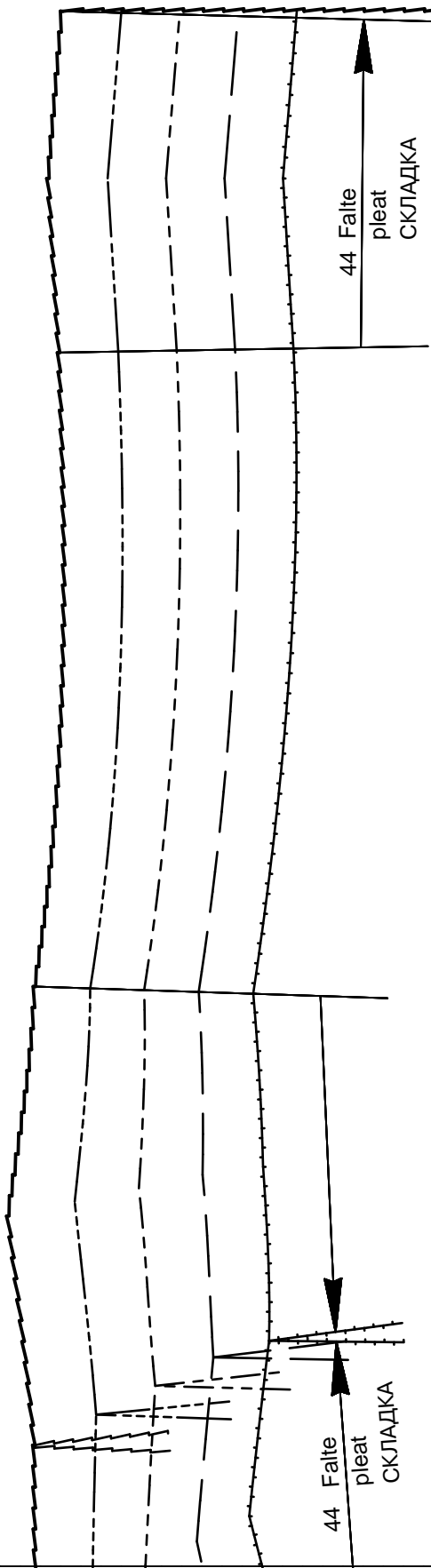
44 Falte
pleat
СКЛАДКА

5h

4h







7a

6a

ЛИНИЯ СЕРЕДИНЫ ПЕРЕДА СТОИБ ДОЛЖЕВАЯ НИТЬ

vordere Mitte Stoffbruch Fadenlauf
center front fold straight grain

7a

7b

6b

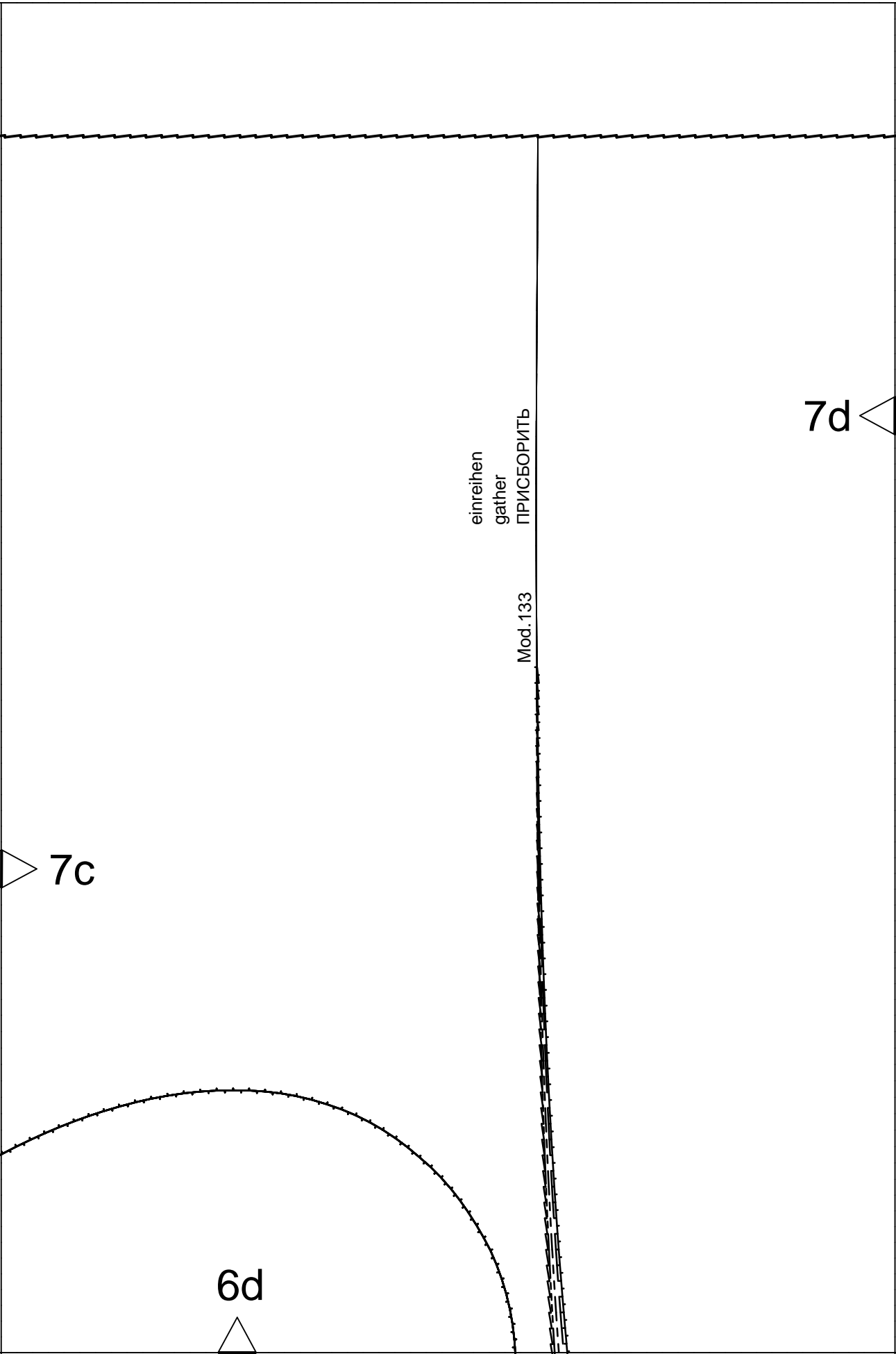
Taille
waist
ТАЛИЯ

21

7b

7c

6c



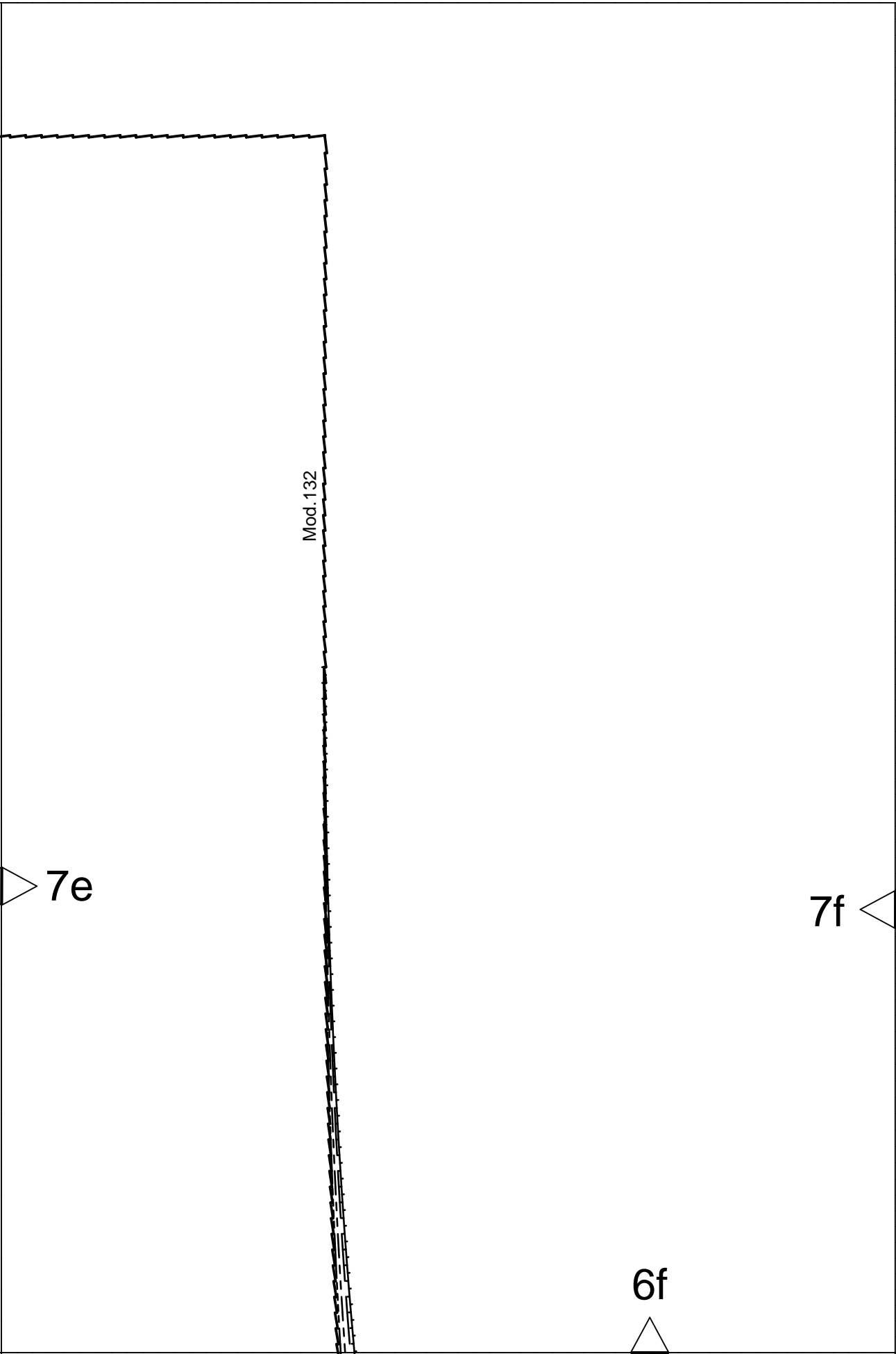


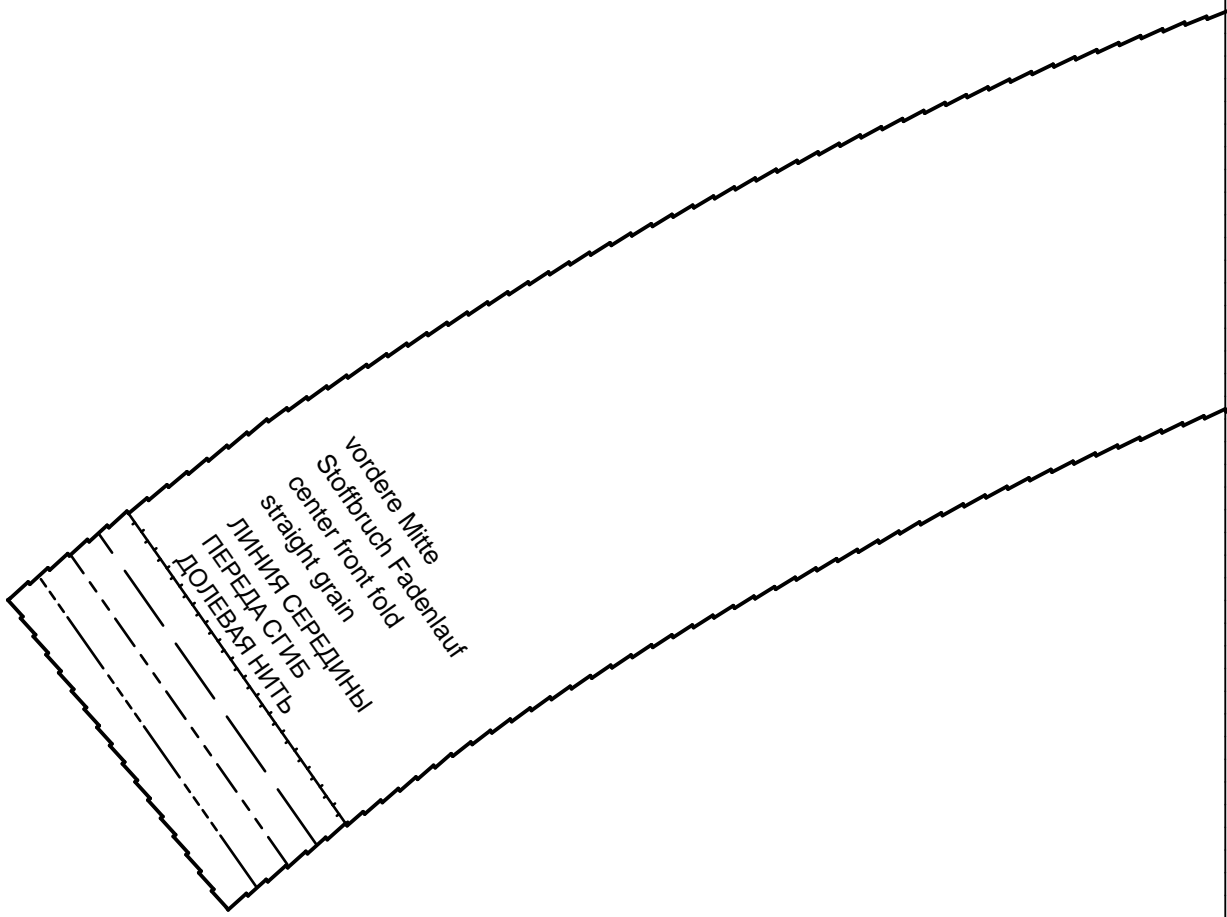
7d

7e

6e







vordere Mitte
Stoffbruch Fadenlauf
center front fold
straight grain
ЛИНИЯ СЕРЕДИНЫ
ПЕРЕДА СГЛИБ
ДОЛЕВАЯ НИТЬ

7f

7g

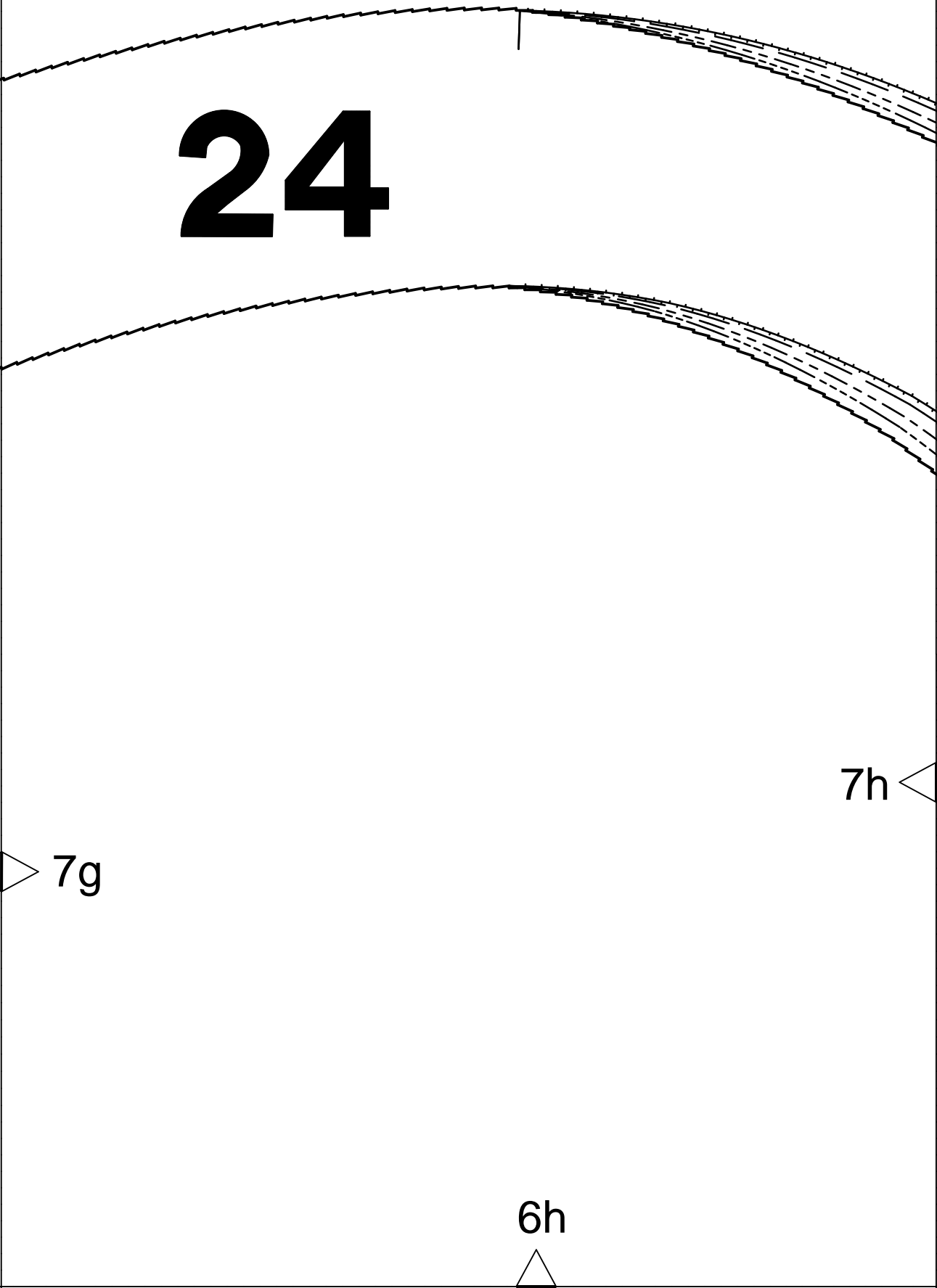
6g

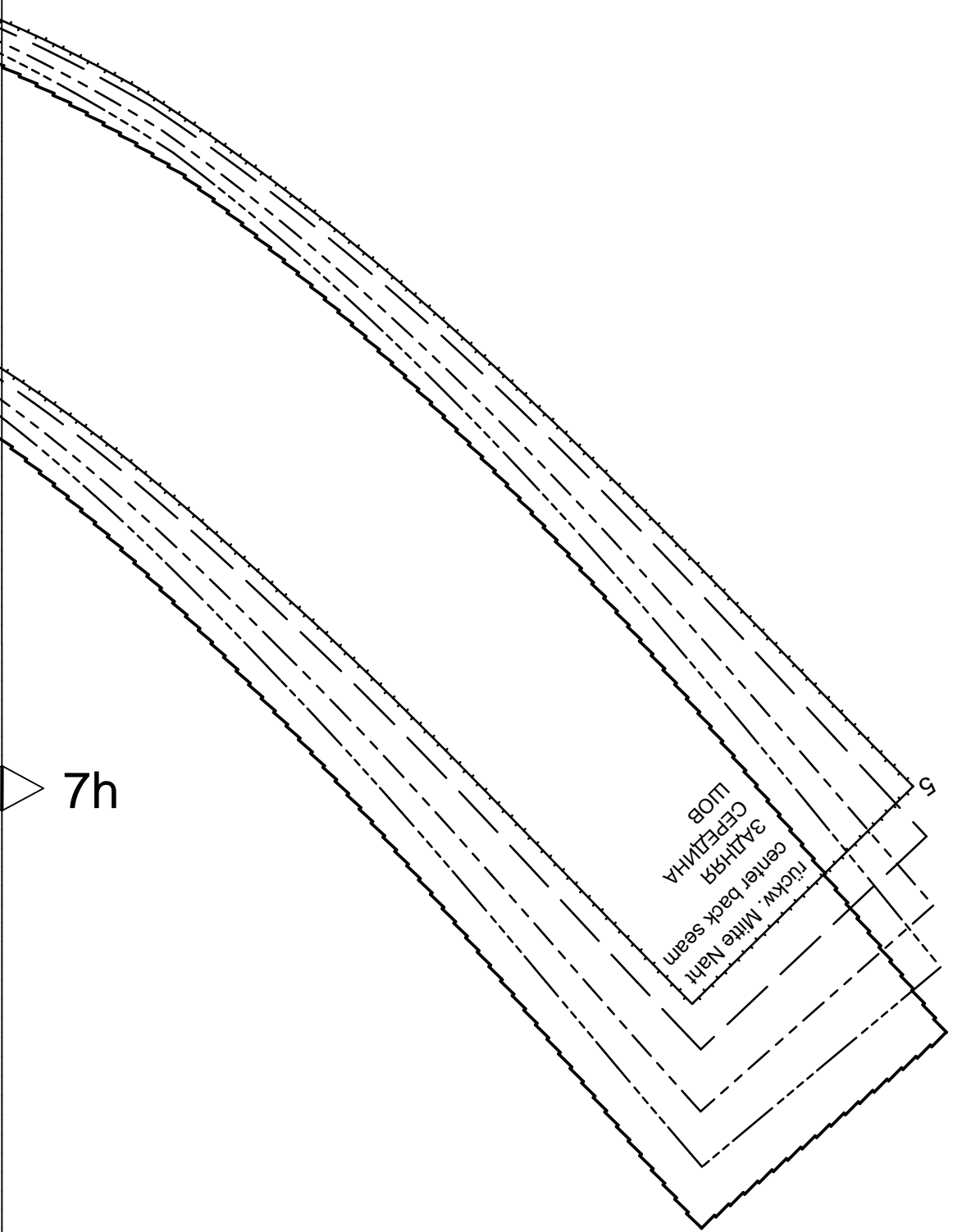
24

7g

7h

6h





ПОЛ
СЕРЕДИНА
center back seam
rückw. Mitte Naht

5

7h

6j