

Design by  
CARYL PIERRE

# Rhea Capelet

**Skill Level**  INTERMEDIATE

**Finished Size**  
14½ x 39½ inches

## Materials

- Karabella Yarns Boise (DK weight; 50% cashmere/50% merino wool; 163 yds/50g per ball): 3 balls sage #68
- Size 8 (5mm) 32-inch circular needle or size needed to obtain gauge
- Size 11 (8mm) 32-inch circular needle (for cast-on only)
- Stitch markers



For the adventurous beginner who is ready to learn some new skills, this is a surprisingly simple project.

## Gauge

19 sts and 30 rows = 4 inches/  
10cm in St st with smaller needle.  
To save time, take time to check gauge.

## Special Abbreviation

**Knit 3 together (k3tog):** Knit next 3 sts tog to dec 2 sts.

## Pattern Stitch

**Lace** (multiple of 15 sts + 8)

**Note:** A chart is provided for those preferring to work pat st from a chart.

**Row 1 (RS):** K2, ssk, yo, \*k3tog, k1, yo, [k1-tbl, yo] 3 times, k1, [ssk] twice, k3; rep from \* to last 4 sts, yo, k2tog, k2.

**Row 2 and all WS rows:** K2, purl to last 2 sts, k2.



**Row 3:** K2, ssk, yo, \*ssk, k2, yo, k3, yo, k1-tbl, yo, k1, [ssk] twice, k2; rep from \* to last 4 sts, yo, k2tog, k2.

**Row 5:** K2, ssk, yo, \*ssk, k1, yo, k5, yo, k1-tbl, yo, k1, [ssk] twice, k1; rep from \* to last 4 sts, yo, k2tog, k2.

**Row 7:** K2, ssk, yo, \*ssk, yo, k3, k2tog, k1, yo, [k1-tbl, yo] twice, k1, [ssk] twice; rep from \* to last 4 sts, yo, k2tog, k2.

**Row 9:** K2, ssk, yo, \*k3, [k2tog] twice, k1, yo, [k1-tbl, yo] 3 times, k1, sk2p; rep from \* to last 4 sts, yo, k2tog, k2.

**Row 11:** K2, ssk, yo, \*k2, [k2tog] twice, k1, yo, k1-tbl, yo, k3, yo, k2, k2tog; rep from \* to last 4 sts, yo, k2tog, k2.

**Row 13:** K2, ssk, yo, \*k1, [k2tog] twice, k1, yo, k1-tbl, yo, k5, yo, k1, k2tog; rep from \* to last 4 sts, yo, k2tog, k2.

**Row 15:** K2, ssk, yo, \*[k2tog] twice, k1, yo, [k1-tbl, yo] twice, k1, ssk, k3, yo, k2tog; rep from \* to last 4 sts, yo, k2tog, k2.

**Row 16:** K2, purl to last 2 sts, k2.  
Rep Rows 1–16 for pat.

## Pattern Note

This capelet is worked from the lace edge to the neck edge.

## Lace Edging

With larger needle, cast on 248 sts.

**Note:** It is helpful to place markers between 15-st rep.

Change to smaller needle.  
[Rep Rows 1–16 of Lace pat] 3 times.

## Body

**Rows 1 and 2:** Knit across.

**Row 3:** K2, \*k2tog, yo; rep from \* to last 2 sts, k2.

**Row 4:** Knit across.

## Short Rows

**Row 1:** K128, turn.

**Row 2:** P8, turn.

**Row 3:** K7, ssk, k3, turn.

**Row 4:** P10, p2tog, p3, turn.

**Row 5:** Knit to 1 st before last turn (gap), ssk, k3, turn.

**Row 6:** Purl to 1 st before last turn (gap), p2tog, p3, turn.

Rep Rows 5 and 6 until all sts are worked—188 sts.

**Designer's TIP** If using long-tail cast-on, avoid wasting too much yarn or running out of yarn by either: (1) Using a strand from the center of a center-pull ball with the outside strand to cast on; or (2) Using strands from two balls of yarn.





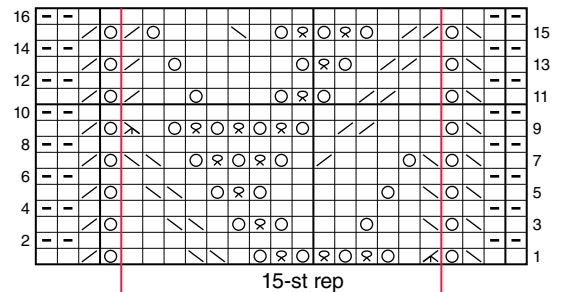
### Garter Edging

Knit 7 rows ending with a RS row.  
Bind off all sts loosely.

### Finishing

Wet-block; pin in place and block to shape. ■

STITCH KEY	
<input type="checkbox"/>	K on RS, p on WS
<input type="checkbox"/>	P on RS, k on WS
<input type="checkbox"/>	Yo
<input type="checkbox"/>	Ssk
<input type="checkbox"/>	K2tog
<input type="checkbox"/>	K3tog
<input type="checkbox"/>	Sk2p
<input type="checkbox"/>	K1-tbl



LACE CHART



MAY 2011 | CreativeKnittingMagazine.com

**NEW!**

# Paid subscribers now get full access to each issue online, plus two years of digital back issues at no extra cost!

As a paid subscriber to *Creative Knitting* magazine, you now have instant access to two years of back issues!

You'll be able to easily search for patterns, articles and how-to techniques—it's all online for as long as you're a subscriber!



Zoom in on just what you want! Whether it's the current issue or a back issue, you can enlarge photos, text or diagrams to make things clearer and easier on your eyes.



A great value! Now you can enjoy the best of both worlds (digital and print) at no extra cost!

Digital access is easy! Just log in at:  
**► CreativeKnittingMagazine.com**

**NO EXTRA COST!**  
 Current subscribers now get this terrific benefit as part of your print subscription!