

9 Easy & Beginner Designs

Crochet-World.com

August 2006

Crochet

THE MAGAZINE FOR CROCHET LOVERS

**Watermelon
Bear** See page 14



Fabulous Chic!

**Steppin' Out! Chestnut
Bolero—Stitched in Style!**

WINNERS! Great American Poncho Contest

- Spiderwebs!
- Roses!
- Pockets!

Welcome!
Be Our Guest!

#BXNCHON *AUTO**SCH 5-DIGIT 44240
#610905010274# EXPIRES: M/A 2010 ISSUE
Mrs Jennifer Mills S256/002
3876 Biltz Rd
Kent OH 44240-6706

U.S. \$3.99 CANADA \$4.99



0 72246 47070 1



PATTERN OF THE MONTH

Great American Poncho Contest Winners

- 6 Rose Garden Poncho**
*Pretty flowers whisper,
"Pick Me!"*
- 42 Spiderweb Poncho**
Lacy and airy, feminine and fun!
- 43 Moody Blues Poncho**
*Retro style—has two
handy pockets!*

FEATURES

- 16 Baby Girl Set**
*Set up the nursery for
a little girl.*
- 19 Black-Eyed Susan
Sweater Clasp**
*Fun and funky 1950s
wardrobe accessory.*



August 2006

Volume 29 No. 4

- 21 Chevrons on Parade**
Waves of red, white and blue!
- 26 People Pillows**
Uncle Ned? Cousin Linda?
- 29 Hearty Welcome
Wall Hanging**
Sentimental wall favorite.
- 30 Delicate Cobweb Runner**
*Beauty from size 20
crochet cotton.*
- 33 Dreamland Stripes**
Soft as a cloud baby blanket.

DEPARTMENTS

- 8 It's a Snap**
Patriotic Cup Cozies
*Celebrate the Fourth
of July!*
- 10 String Along With Me**
Lacy Doily
Doily lovers delight!
- 12 Touch of Style**
Chestnut Bolero
Chic boutique-wear!



- 14 Country Treasures**
Watermelon Bear
Fun for kids!
- 22 Crochet Potpourri**
Swap column.
- 23 Crochet Chat**
Reader letters.
- 24 Crochet Questions**
Get the answers!
- 46 Buyer's Guide**
Useful information.
- 46 Stitch Guide**

FOR SERVICE ON YOUR SUBSCRIPTION, including change of address, visit online at www.Crochet-World.com (select "Subscriptions"). Or write to Crochet World Customer Service, P.O. Box 9001, Big Sandy, TX 75755. Please enclose your label from a recent issue. Or, call (800) 829-5865 or (903) 636-4040 weekdays, 8 a.m. to 5 p.m. CST. Send faxes to (888) 848-4414. Or, send an e-mail to Customer_Service@Crochet-World.com.

First Row



At last! We're proud to finally announce the winners of the Great American Poncho contest. It's always tough to choose only a few, and this contest was no exception. A hearty thank you to all who entered. We enjoyed seeing your designs. If space were not a problem, we would love to show them all, but, alas, we could only choose three.

The lucky winners hail from California, Pennsylvania and Florida, which goes to show that ponchos are truly loved all over the country.

It's an all-time classic design where sizing is not a problem as one size fits all! Ponchos can easily be made as large or as small as body size dictates. All it takes is yarn and your crochet hook, a little bit of time, basic crochet skills, and before you know it, you'll be wearing a new poncho out on the town!

Congratulations go to Dorothy Adams of Seal Beach, Calif., for her lacy Spiderweb Poncho; Linda Whiteley of Cambridge Springs, Pa., for her flower-themed Rose Garden Poncho; and to Louise Puchaty of Indian Harbour Beach, Fla., for her neat Moody Blues Poncho. Great job, ladies! Their winning designs begin on page 6.

Doilies are prominently featured, too. The lovely Delicate Cobweb Runner (page 30) will find a place of honor on your table as will the patriotic red, white and blue Chevrons on Parade doily (page 21). Laciness is the style of perennial favorite Agnes Russell. Check out her gorgeous Lacy Doily on page 10 as a gift to yourself.

We just have to mention the chic and elegant Chestnut Bolero, shown on the cover. This fabulous design is boutique and high-end quality for a fraction of what you'd pay retail. Made from trendy fun fur yarn, this is NOT your grandmother's crochet! Directions begin on page 12.

Crochet celebrates people. The Baby Girl Set ensemble (on page 16) fetes the sweet baby girls in our lives, just as the Baby Boy Set did in the April 2006 issue. Why not offer it as a baby shower gift? Hang the Americana piece, Hearty Welcome Wall Hanging (page 29) on a wall to greet your guests as they enter your home. And why not crochet some people? Our fun and whimsical People Pillows on page 26 are easy to make. Kids love 'em!

Enjoy the balmy summer days. See you in the fall.

From the world of crochet,

Susan

Letters and submissions to the editor should be sent via e-mail to Editor@Crochet-World.com or through our Web site at www.Crochet-World.com. They can also be faxed to (260) 589-8093 or mailed to *Crochet World* Editor, 6 Pearl St., P.O. Box 776, Henniker, NH 03242-0776. Letters chosen for publication may be edited for clarity and space.

Every effort is made to return submissions if accompanied by return postage. Publisher assumes no responsibility for return or safety of unsolicited materials.

Crochet

WORLD®

www.Crochet-World.com

| | |
|-----------------------------|---------------------|
| Editor | Susan Tullis |
| Art Director | Brad Snow |
| Publishing Services Manager | Brenda Gallmeyer |
| Associate Editor | Agnes Russell |
| Assistant Art Director | Nick Pierce |
| Copy Supervisor | Michelle Beck |
| Copy Editors | Mary O'Donnell |
| Technical Artist | Judy Weatherford |
| | Leigh Maley |
| Graphic Arts Supervisor | Ronda Bechinski |
| Graphic Artists | Debby Keel |
| | Edith Teegarden |
| Production Assistants | Cheryl Kempf |
| | Marj Morgan |
| | Judy Neuenschwander |
| Photographers | Tammy Christian |
| | Don Clark |
| | Matthew Owen |
| | Jackie Schaffel |
| Photo Stylists | Tammy M. Smith |
| | Tammy Nussbaum |
| Publishing Director | David McKee |
| Publisher | John Boggs |
| Editorial Director | Gary Richardson |
| Magazine Marketing Director | Scott Moss |
| Newsstand Consultant | Angelo Gandino |

HOW TO CONTACT US

Internet: www.Crochet-World.com

Mail: *Crochet World*, P.O. Box 9001,

Big Sandy, TX 75755

E-mail: Customer_Service@Crochet-World.com

Telephone: (800) 829-5865

Fax: (888) 848-4414

Include your full name, mailing address and daytime phone number.

ADVERTISING

Advertising Inquiries: John Boggs

306 East Parr Road, Berne, IN 46711

(877) 282-4724, ext. 354 • fax (260) 589-8093

E-mail: John_Boggs@DRGnetwork.com

Account Executives: Jan Clemmons, Cindy Elzey, Patsy Franz, Ruth Goodwin, Samson Lang, Jane Lodde, Marie Madson, Rony Moya

Local Sales Manager: Diane Kocal

Ad Traffic/Materials: Karen Ousley

(877) 282-4724, ext. 313

Continuity Coordinators: (877) 282-4724:

Robin Gingerich, ext. 367; Lucas Heckert, ext. 383

Responsibility for advertised products lies with the advertisers. *Crochet World* will not knowingly publish fraudulent materials and is not liable for any damages arising from the purchase or use of any products. If you have any consumer complaints concerning goods purchased from our advertisers, please send us written notification to aid our screening process.

CROCHET WORLD (ISSN 0164-7962, USPS 511-570) is published bimonthly by House of White Birches, (260) 589-4000, fax (260) 589-8093. Periodicals postage paid at Berne, IN 46711, and additional mailing offices.

POSTMASTER: Send change of address to *Crochet World*, P.O. Box 5000, Big Sandy, TX 75797-5000. Canada Post International Publications Mail Product (Canadian Distribution) Sales Agreement No. 40012306. Copyright © 2006 House of White Birches.

SUBSCRIPTIONS: \$19.97 per year in USA, \$24.97 in Canada, \$29.97 elsewhere, US funds only. Please send all subscription-related correspondence to *Crochet World*, P.O. Box 9001, Big Sandy, TX 75755, or call (800) 829-5865, or e-mail Customer_Service@Crochet-World.com.

RETAIL STORES: If you are not presently being provided copies of this magazine by your area newsstand wholesaler, contact our company representative at Wholesale@DRGnetwork.com to set up a direct account. Or call (800) 772-6643.

Printed in USA. GST Account Number 13541 4274 RT.



Great American Poncho Contest Winners

Rose Garden Poncho

Design by Linda Whiteley

SKILL LEVEL

■■■■■ INTERMEDIATE

FINISHED SIZE

Girl's size 6-8

MATERIALS

- Red Heart Baby Teri medium (worsted) weight yarn (3 oz/192 yds/85g per skein):
 - 4 skeins #9137 pink
 - 1 skein #9180 mint
 - ½ oz each #9181 blue, #9145 lilac and #9121 yellow
- Sizes G/6/4mm, I/9/5.5mm and J/10/6mm crochet hook or sizes needed to obtain gauge
- Tapestry needle
- 1-inch pin back

GAUGE

Size I hook: 4 rows = 2 inches;
8 dc = 2 inches

Size G hook: Rose = 2¾ inches
in diameter; leaf point to
point = 4 inches

Rose Garden Poncho
Linda Whiteley, of
Cambridge Springs,
Pa., chose a lovely
floral theme for her
winning design.



PATTERN NOTES

Weave in loose ends as work progresses.

Join rounds with a slip stitch unless otherwise stated.

To make different-size Ponchos, change hook sizes. The following are recommendations for smaller and larger Ponchos. Smaller Poncho: size H hook for Poncho, size F hook for Roses and size I hook for sl sts. Larger Poncho: size J hook for

Poncho, size H hook for Roses and size K hook for sl sts.

ROSE

Make 5 each pink, blue, lilac and 6 yellow.

Note: The 6th yellow Rose will be made into a pin to be worn on the Poncho.

Rnd 1 (RS): With size G hook, ch 4, sl st to join in first ch to form a ring, ch 3 (counts as first dc), 3 dc in ring, turn, ch 3, dc in next dc, 2 dc in next dc, dc in top of beg ch-3 (5-dc petal completed), turn, ch 3, *position the previous ch-3 across the back of the petal just completed, work 4 dc in ring, turn, ch 3, dc in next dc, 2 dc in next dc, dc in next dc (5-dc petal completed), turn, ch 3, rep from * until a total of 5 petals are completed, join the last ch-3 in top of beg ch-3 of first petal, fasten off. (5 petals, 5 ch-3 sps)

LEAF

Rnd 1 (RS): With mint, ch 4, sl st in first ch to form a ring, ch 3, 14 dc in ring, join in 3rd ch of beg ch-3. (15 dc)

Note: Before joining the Rose and Leaf tog, please take note that the Rose has 5 ch-3 sps equaling 15 chs and rnd 1 of the Leaf has 15 dc. Use care following rnd 2.

Rnd 2: Holding Rose with petals facing and WS of mint 15-dc Leaf against WS of Rose, sl st through first ch of any ch-3 group between petals and into dc of mint Leaf, *ch 6, sc in 2nd ch from hook, hdc in next ch, dc in next ch, tr in next ch, yo hook twice, insert hook into first ch of ch-6, yo, draw up a lp, yo, draw through 2 lps on hook, [insert hook in next ch of ch-3 of Rose and next dc of Leaf, yo, draw this lp through as well as through next 2 lps on hook] twice**, working through both thicknesses of ch-3 sp of Rose and next 3 dc of Leaf, sl st in each of next 3 sts, rep from * twice, ending last rep at **, sl st to join in beg sl st, fasten off. (3 leaves)

Continued on page 45



Spiderweb Poncho
Dorothy Adams, of Seal Beach, Calif., created a winning lacy-looking poncho that resembles spiderwebs. Pattern on page 42.



Moody Blues Poncho
Louise Puchaty, of Indian Harbour Beach, Fla., incorporated pockets into her trendy, winning design. Pattern on page 43.

How to Contact Us

For assistance concerning your subscription or any other questions, our Customer Service representatives are ready to assist you by whichever means is most convenient for you.

For online subscription assistance, go to www.Crochet-World.com

Select Subscriptions to:

- Subscribe
- Renew your subscription
- Pay your bill
- Check your account status (expiration and latest payment)
- Change your address or e-mail address
- Report a duplicate issue
- Report a missing or damaged issue

Mail subscription questions to:

Crochet World magazine
P.O. Box 9001
Big Sandy, TX 75755

E-mail:

Customer_Service@Crochet-World.com

Call us Weekdays

8 a.m. to 5 p.m. CST:

Please have your address label, renewal or billing invoice handy.
(800) 829-5865 or (903) 636-4040

Fax subscription questions to:

(888) 848-4414

For Pattern Services:

Write: Crochet Pattern Services

306 East Parr Road, Berne, IN 46711

E-mail: Editor@Crochet-World.com

Call: (260) 589-4000, ext. 333, weekdays

The Crochet World guarantee:

If, for any reason, you're not completely satisfied with Crochet World magazine, you can cancel your subscription and receive a full and immediate refund of the entire subscription price. No questions asked.

MAILING LISTS:

From time-to-time we make our subscriber list available to companies that sell goods and services by mail that we believe would interest our readers. If you would rather not receive such mailings, please send your current mailing label or an exact copy to Crochet World, Mail Preference Service, P.O. Box 9001, Big Sandy, TX 75755.

If the post office alerts us that your magazine is undeliverable, we have no further obligation unless we receive a corrected address within two years.

Patriotic Cup Cozies

SKILL LEVEL

■ ■ ■ ■ ■ EASY

FINISHED SIZES

Instructions given fit small 2½–3½-inch container; changes for large 4–4½-inch diameter container are in [].

MATERIALS

- Size 10 crochet cotton (350 yds per ball):
200 yds blue
30 yds red
20 yds white
- Size 5/1.90mm crochet hook or size needed to obtain gauge
- Tapestry needle
- 7mm white pearl beads:
72 [90] each cozy

GAUGE

Rnds 1–3 = 1½ (1¾) inches

PATTERN NOTES

Weave in loose ends as work progresses.

Join rounds with a slip stitch unless otherwise stated.

Materials listed make 1 cozy.

SPECIAL STITCHES

Bead single crochet (bead sc):

Insert hook in indicated st, yo, draw up a lp, push bead up close to hook, yo, draw through all lps on hook.

Shell: (2 dc, ch 1, 2 dc) in indicated ch sp.

Beginning shell (beg shell): Sl st into ch sp, ch 3, (1 dc, ch 1, 2 dc) in same ch sp.

COZY

Note: String 72 [90] white pearl beads onto blue cotton.



Take some red, white and blue crochet cotton, a few white pearl beads and your crochet skills and Voilà!—wonderful Fourth of July cup cozies!

Rnd 1: With blue ch 5 [6], sl st to join in first ch to form a ring, ch 3 (counts as first dc), 15 [19] dc in ring, sl st to join in 3rd ch of beg ch-3. (16 [20] dc)

Rnd 2: Ch 1, sc in same st as joining, *ch 3, sk next dc**, sc in next dc, rep from * around, ending last rep at **, join in beg sc. (8 [10] ch-3 lps)

Rnd 3: Sl st into ch-3 sp, **beg shell** (see Special Stitches) in same ch-3 sp, ch 1, ***shell** (see Special

Stitches) in next ch-3 sp, ch 1, rep from * around, join in 3rd ch of beg ch-3. (8 [10] shells)

Rnd 4: Sl st into ch-1 sp of shell, ch 1, sc in same ch-1 sp, ch 3, *sc in next ch sp, ch 3, rep from * around, join in beg sc.

Rnd 5: Sl st into ch sp, beg shell in same ch sp, *ch 1, 2 dc in next ch sp, ch 1**, shell in next ch sp, rep from *

Continued on page 45

String Along With Me

Design by
Agnes Russell

Lacy Doily

SKILL LEVEL

■ ■ ■ ■ EASY

FINISHED SIZE

18½ inches in diameter

MATERIALS

- J. & P. Coats Royale Classic size 10 crochet cotton (400 yds per ball):
1 ball #201 white
- Size 7/1.65mm steel crochet hook or size needed to obtain gauge
- Tapestry needle

GAUGE

Rnds 1 and 2 = 1½ inches;
4 shell rnds = 1½ inches

PATTERN NOTES

Weave in loose ends as work progresses.

Join rounds with a slip stitch unless otherwise stated.

SPECIAL STITCHES

Shell: (3 dc, ch 3, 3 dc) in indicated sp.

Beginning shell (beg shell): (Ch 3, 2 dc, ch 3, 3 dc) in indicated sp.

Triple treble crochet (trtr): Yo hook 4 times, insert hook in indicated st, yo, draw up a lp, [yo, draw through 2 lps on hook] 5 times.

Picot: Ch 3, sl st in top of last dc.

DOILY

Rnd 1: Ch 5, join in first ch to form a ring, ch 6 (counts as first dc, ch 3), [dc in ring, ch 3] 7 times, join in 3rd ch of beg ch-6. (8 dc)

Rnd 2: Sl st into ch-3 sp, ch 3 (counts as first dc), 4 dc in same ch-3 sp, 5 dc in each rem ch-3 sp around,

join in 3rd ch of beg ch-3. (40 dc)

Rnd 3: Ch 5 (counts as first dc, ch 2), sk next dc, [dc in next dc, ch 2, sk next dc] around, join in 3rd ch of beg ch-5. (20 dc)

Rnd 4: Sl st into ch-2 sp, ch 3, 2 dc in same ch-2 sp, ch 1, [3 dc in next ch sp, ch 1] around, join in 3rd ch of beg ch-3. (60 dc)

Rnd 5: Ch 3, dc in each of next 2 dc, [ch 5, dc in each of next 3 dc] around, ending with ch 2, tr in top of beg ch-3 to form last ch-5 sp. (20 ch sps)

Rnd 6: Ch 1, sc in same ch sp as beg ch-1, [ch 6, sc in next ch-5 sp] around, ending with ch-3, tr in beg sc to form last ch-6 sp.

Rnd 7: Ch 1, sc in same sp as beg ch-1, [ch 10, sc in next ch-6 sp] around, ending with ch 3, trtr (see *Special Stitches*) in beg sc to form last ch-10 sp.

Rnd 8: Beg shell (see *Special Stitches*) in same ch sp, ch 1, [shell (see *Special Stitches*) in next ch sp, ch 1] around, join in 3rd ch of beg ch-3. (20 shells)

Rnd 9: Sl st into ch-3 sp of shell, beg shell in same ch sp, ch 3, [shell in ch sp of next shell, ch 3] around, join in 3rd ch of beg ch-3.

Rnd 10: Sl st into ch-3 sp of shell, beg shell in same ch sp, ch 4, [shell in ch sp of next shell, ch 4] around, join in 3rd ch of beg ch-3.

Rnd 11: Sl st into ch-3 sp of shell, beg shell in same ch sp, ch 6, [shell in ch sp of next shell, ch 6] around, join in 3rd ch of beg ch-3.

Rnd 12: Sl st into ch-3 sp of shell, beg shell in same ch sp, ch 8, [shell in ch sp of next shell, ch 8] around, join in 3rd ch of beg ch-3.

Rnd 13: Sl st into ch-3 sp of shell, beg shell in same ch sp, *ch 4, sc in next ch-8 sp, ch 4**, shell in ch sp

of next shell, rep from * around, ending last rep at **, join in 3rd ch of beg ch-3.

Rnd 14: Sl st into ch-3 sp of shell, beg shell in same ch sp, *ch 3, 4 dc in next sc, ch 3**, shell in ch sp of next shell, rep from * around, ending last rep at **, join in 3rd ch of beg ch-3.

Rnd 15: Sl st into ch-3 sp of shell, beg shell in same ch sp, *ch 4, sk next ch-3 sp, dc in each of next 4 dc, ch 4, sk next ch-3 sp**, shell in ch sp of next shell, rep from * around, ending last rep at **, join in beg ch-3.

Rnd 16: Sl st into ch-3 sp of shell, beg shell in same ch sp, *ch 5, sk next ch-4 sp, dc in each of next 2 dc, 2 dc in next dc, dc in next dc, ch 5, sk next ch-4 sp**, shell in ch sp of next shell, rep from * around, ending last rep at **, join in 3rd ch of beg ch-3.

Rnd 17: Sl st into ch-3 sp of shell, beg shell in same ch sp, *ch 5, sk next ch-5 sp, dc in each of next 2 dc, 2 dc in next dc, dc in each of next 2 dc, ch 5, sk next ch-5 sp**, shell in ch sp of next shell, rep from * around, ending last rep at **, join in 3rd ch of beg ch-3.

Rnd 18: Sl st into ch-3 sp of shell, beg shell in same ch sp, *ch 6, sk next ch-5 sp, dc in each of next 3 dc, picot (see *Special Stitches*), 2 dc in next dc, dc in each of next 2 dc, ch 6, sk next ch-5 sp**, shell in ch sp of next shell, rep from * around, ending last rep at **, join in 3rd ch of beg ch-3.

Rnd 19: Sl st into ch-3 sp of shell, beg shell in same ch sp, *ch 6, sk next ch-6 sp, dc in each of next 2 dc, ch 4, sk next 3 dc and picot at center, dc in next 2 dc, ch 6, sk next ch-6 sp**, shell in ch sp of next shell, rep from * around, ending last rep at **, join in 3rd ch of beg ch-3.

Shells and picots combine in the creation of this gorgeous large doily that will add flair to any table.



Rnd 20: Sl st into ch-3 sp of shell, beg shell in same ch sp, *ch 6, sk next ch-6 sp, dc in each of next 2 dc, dc in each of next 4 chs, dc in each of next 2 dc, ch 6, sk next ch-6 sp**, shell in ch sp of next shell, rep from * around, ending last rep at **, join in 3rd ch of beg ch-3.

Rnd 21: Sl st into ch-3 sp of shell, beg shell in same ch sp, *ch 6, sk next ch-6 sp, 2 dc in next dc, dc in each of next 3 dc, picot, dc in each of next 3 dc, 2 dc in next dc, ch 6, sk next ch-6 sp**, shell in ch sp of next shell, rep from * around, ending last

rep at **, join in 3rd ch of beg ch-3.

Rnd 22: Sl st into ch-3 sp of shell, beg shell in same ch sp, *ch 6, sk next ch-6 sp, dc in each of next 2 dc, ch 6, sk next 6 dc and picot, dc in each of next 2 dc, ch 6, sk next ch-6 sp**, shell in ch sp of next shell, rep from * around, ending last rep at **, join in 3rd ch of beg ch-3.

Rnd 23: Sl st into ch-3 sp of shell, beg shell in same ch sp, *ch 6, sk next ch-6 sp, dc in each of next 2 dc, dc in each of next 3 chs, picot, dc in each of next 3 chs, dc in each of next 2 dc, ch 6, sk next ch-6 sp**, shell

in ch sp of next shell, rep from * around, ending last rep at **, join in 3rd ch of beg ch-3.

Rnd 24: Sl st into ch-3 sp of shell, ch 1, *(sc, ch 3, sc, ch 5, sc, ch 3, sc) in ch-3 sp of shell, [sl st in next dc, ch 1] 3 times, [sl st in next ch, ch 1] 6 times, sl st in next dc, [ch 1, sl st in next dc] 3 times, (sc, ch 3, sc, ch 5, sc, ch 3, sc) in picot, sk next dc, [sl st in next dc, ch 1] 4 times, [sl st in next ch, ch 1] 6 times, [sl st in next dc, ch 1] twice, sl st in next dc, rep from * around, join in beg sc, fasten off. ☞



Chestnut Bolero

SKILL LEVEL

■■■■■ INTERMEDIATE

FINISHED SIZES

Instructions given fit small; changes for medium, large and X-large are in [].

FINISHED MEASUREMENTS

Bust: 36 [40½, 43½, 48] inches

MATERIALS

- Moda Dea Zing bulky (chunky) weight yarn (1¼ oz/87 yds/50g per ball): 6 [7, 7, 8] balls #1361 chestnut
- Sizes G/6/4mm and H/8/5mm crochet hook or sizes needed to obtain gauge
- Tapestry needle
- ¾-inch brown leather button

GAUGE

8 sts = 3 inches; 9 rows = 3 inches

PATTERN NOTES

Weave in loose ends as work progresses.

Join rounds with a slip stitch unless otherwise stated.

BACK

Row 1 (RS): With size H hook, ch 39 [45, 49, 55], sc in 2nd ch from hook, sc in each rem ch across, turn. (38 [44, 48, 54] sc)

Row 2: Ch 1, 2 sc in first sc, sc in each sc across to last sc, 2 sc in last sc, turn. (40 [46, 50, 56] sc)

Row 3: Ch 1, sc in each sc across, turn.

Rows 4-11: Rep rows 2 and 3. (48 [54, 58, 64] sc)

Rows 12-16: Rep row 3.

ARMHOLE SHAPING

Row 1: Sl st across first 4 [5, 5, 6] sts, ch 1, sc in same st as last sl st, sc in each sc across to last 3 [4, 4, 5] sts, turn. (42 [46, 50, 54] sts)

Row 2: Ch 1, sc in first sc, sc dec (see *Stitch Guide*) in next 2 sc, sc in each sc across to last 3 sc, sc dec in next 2 sc, sc in last sc, turn. (40 [44, 48, 52] sc)

Row 3: Ch 1, sc in first sc, [sc dec in next 2 sc] 0 [1, 1, 1] times, sc in each sc across to last 1 [3, 3, 3] sc, [sc dec in next 2 sc] 0 [1, 1, 1] times, sc in last sc, turn. (40 [42, 46, 50] sc)

Row 4: Rep row 2. (38 [40, 44, 48] sc)

Row 5: Ch 1, sc [sc dec in next 2 sc] 0 [0, 0, 1] times, sc in each sc across to last 1 [1, 1, 3] sts, [sc dec in next 2 sc] 0 [0, 0, 1] times, sc in last sc, turn. (38 [40, 44, 46] sc)

Row 6: Rep row 2. (36 [38, 42, 44] sc)

Row 7: Ch 1, sc in each st across, turn.

Row 8: Rep row 2. (34 [36, 40, 42] sc)

Rows 9-20 [20, 22, 22]: Rep row 7.

FIRST SHOULDER SHAPING

Row 1: Ch 1, sc in each of next 8 [9, 10, 11] sc, turn.

Row 2: Ch 1, sc in each of next 8 [9, 10, 11] sc, fasten off.

2ND SHOULDER SHAPING

Row 1: Sk next 18 [18, 20, 20] sts, attach yarn in next sc, ch 1, sc in same sc as beg ch-1, sc in each of next 7 [8, 9, 10] sc, turn.

Row 2: Ch 1, sc in each of next 8 [9, 10, 11] sc, fasten off.

FRONT

Make 2.

Row 1: With size H hook, ch 7 [10, 12, 15], sc in 2nd ch from hook, sc in each rem ch across, turn. (6 [9, 11, 14] sc)

Row 2: Ch 1, 2 sc in first sc, sc across to last sc, 2 sc in last sc, turn. (8 [11, 13, 16] sc)

Row 3: Ch 1, 2 sc in first sc, sc in each rem sc across, turn. (9 [12, 14, 17] sc)

Rows 4-11: Rep rows 2 and 3. (21 [24, 26, 29] sc)

Row 12: Ch 1, sc in each sc across, turn.

Rows 13 & 14: Rep row 12.

Row 15: Rep row 3. (22 [25, 27, 30] sc)

Row 16: Rep row 12.

ARMHOLE SHAPING

Row 1: Ch 1, sc in each of next 19 [21, 23, 25] sc, turn.

Row 2: Ch 1, sc in first sc, sc dec in next 2 sc, sc in each rem sc across, turn. (18 [20, 22, 24] sc)

Row 3: Ch 1, 2 sc in first sc, sc in each sc across to last 1 [3, 3, 3] sc, [sc dec in next 2 sc] 0 [1, 1, 1] times, sc in last sc, turn. (19 [20, 22, 24] sc)

Row 4: Rep row 2. (18 [19, 21, 23] sts)

Row 5: Ch 1, sc in each sc across to last 1 [1, 1, 3] sc, [sc dec in next 2 sc] 0 [0, 0, 1] times, sc in last sc, turn. (18 [19, 21, 22] sc)

Row 6: Rep row 2. (17 [18, 20, 21] sc)

Row 7: Ch 1, 2 sc in first sc, sc in each rem sc across, turn. (18 [19, 21, 22] sc)

Row 8: Rep row 2. (17 [18, 20, 21] sc)

Rows 9 & 10 [9 & 10, 9-12, 9-12]: Ch 1, sc in each sc across, turn.

Continued on page 36

You'd pay top-dollar for this chic and dazzling bolero in an upscale boutique—but why? You can crochet your own and be the envy of all who see it and ask, "Where did you buy that gorgeous top?"



Watermelon Bear

SKILL LEVEL



FINISHED SIZE

13½ inches tall

MATERIALS

- Red Heart Super Saver medium (worsted) weight yarn (7 oz/364 yds/198g per skein):
2 oz #336 warm brown
1 oz #386 paddy green
2 yds #312 black
- Red Heart Classic medium (worsted) weight yarn (3½ oz/190 yds/99g per skein):
1 oz each #111 eggshell and #730 grenadine
- Size G/6/4mm crochet hook or size needed to obtain gauge
- Tapestry needle
- Sewing needle
- Sewing thread
- Fiberfill
- 20 inches 1½-inch-wide coordinating wire-edged ribbon
- ¾-inch green buttons: 3
- Size 4/0 snap fasteners: 3
- Tacky glue
- Stitch markers

GAUGE

4 sc = 1 inch; 4 rows = 1 inch

PATTERN NOTES

Weave in loose ends as work progresses.

Do not join rounds unless otherwise stated. Mark first stitch of round with stitch marker.

HEAD & BODY

Rnd 1: Starting at top of head with warm brown, ch 2, 6 sc in 2nd ch from hook. (6 sc)

Rnd 2: 2 sc in each sc around. (12 sc)

Rnd 3: [Sc in next sc, 2 sc in next sc] around. (18 sc)

Rnd 4: [Sc in each of next 2 sc, 2 sc in next sc] around. (24 sc)

Rnd 5: [Sc in each of next 3 sc, 2 sc in next sc] around. (30 sc)

Rnd 6: [Sc in each of next 4 sc, 2 sc in next sc] around. (36 sc)

Rnd 7: Sc in each sc around.

Rnds 8–14: Rep rnd 7.

Rnd 15: [Sc in each of next 4 sc, sc dec (see *Stitch Guide*) in next 2 sc] around. (30 sc)

Rnd 16: Rep rnd 7.

Rnd 17: [Sc in each of next 3 sc, sc dec in next 2 sc] around. (24 sc)

Rnd 18: Rep rnd 7.

Rnd 19: [Sc in each of next 2 sc, sc dec in next 2 sc] around. (18 sc)

Rnd 20: Rep rnd 7, **change color** (see *Stitch Guide*) to grenadine in last sc made.

Rnd 21: Rep rnd 2. (36 sc)

Rnd 22: [Sc in each of next 5 sc, 2 sc in next sc] around. (42 sc)

Rnd 23: [Sc in each of next 6 sc, 2 sc in next sc] around. (48 sc)

Rnds 24–37: Rep rnd 7, at the end of last rep change color to eggshell in last st.

Rnds 38 & 39: Rep rnd 7, at the end of last rep change color to paddy green.

Rnds 40 & 41: Rep rnd 7.

Rnd 42: [Sc in each of next 6 sc, sc dec in next 2 sc] around. (42 sc)

Rnd 43: [Sc in each of next 5 sc, sc dec in next 2 sc] around. (36 sc)

Rnd 44: Rep rnd 15. (30 sc)

Rnd 45: Rep rnd 7.

Rnd 46: Rep rnd 17. (24 sc)

Beg stuffing Head and Body firmly and continue as work progresses.

Rnd 47: Rep rnd 19.

Rnd 48: [Sc in next sc, sc dec in

next 2 sc] around. (12 sc)

Rnd 49: [Sc dec in next 2 sc] around, join with a sl st in next sc, leaving a length of yarn, fasten off. Sew opening closed. (6 sc)

EAR

Make 2.

Rnd 1: Using warm brown, ch 2, 6 sc in 2nd ch from hook. (6 sc)

Rnd 2: 2 sc in each sc around. (12 sc)

Rnd 3: [Sc in next sc, 2 sc in next sc] around. (18 sc)

Rnds 4–7: Sc in each sc around.

Rnd 8: [Sc in next sc, sc dec in next sc] around. (12 sc)

Rnd 9: [Sc dec in next 2 sc] around, to join sl st in next sc, leaving a length of yarn, fasten off. Flatten Ears and sew an Ear to each side of Head. (6 sc)

MUZZLE

Rnds 1–3: Rep rnds 1–3 of Ear. (18 sc)

Rnd 4: Sc in each sc around, join with sl st in next sc, leaving a length of yarn, fasten off. Sew Muzzle to front of Head over rnds 11–16, stuffing with fiberfill before closing.

FACIAL FEATURES

With tapestry needle and a length of grenadine, embroider **nose** over rnd 1 of Muzzle with a satin st. With tapestry needle and black, embroider **eyes** with satin st over rnds 8 and 9, 1½ inches apart.

ARM

Make 2.

Rnd 1: Using warm brown, ch 2, 6 sc in 2nd ch from hook. (6 sc)

Rnd 2: 2 sc in each sc around. (12 sc)

Rnd 3: Sc in each of next 3 sc, 2 sc in next sc. (15 sc)

Rnds 4–21: Sc in each sc around.

Continued on page 35

*She's cute as can be!
Our sweet bear holds a slice
of watermelon—even her
eyes look like watermelon
seeds. Happy summer!*



Baby Girl Set

Design by Dawn Bishop

SKILL LEVEL

■■■■■ INTERMEDIATE

FINISHED SIZES

Bib: 7 x 10 inches
Basket: 5 x 10 inches x
4½ inches deep
Burp pad: 10 x 22 inches
Afghan: 32½ x 37½ inches

MATERIALS

- Red Heart Super Saver medium (worsted) weight yarn (7 oz/364 yds/198g per skein):
 - 3 skeins #311 white
 - 2 skeins #373 petal pink
 - 1 skein each #322 pale yellow, #579 pale plum and #363 pale green
- Sizes G/6/4mm and J/10/6mm crochet hooks or sizes needed to obtain gauge
- Tapestry needle
- ½-inch pink shank button

GAUGE

Size G hook: 5 sc = 1 inch;
5 sc rows = 1 inch
Size J hook: 4 sc = 1 inch;
9 sc rows = 2 inches

PATTERN NOTES

Weave in loose ends as work progresses.

Join rounds with a slip stitch unless otherwise stated.

Follow graph odd-numbered rows right to left and even-numbered rows left to right. Left-handed crocheters read graphs opposite: odd-numbered rows left to right and even-numbered rows right to left.

SPECIAL STITCH

Cross-stitch (cross-st): [Sk next st, dc in next st, dc in sk st] across.

AFGHAN

Center Panel

Row 1 (RS): Starting at the

bottom with size J hook and white, ch 37, sc in 2nd ch from hook, sc in each rem ch across, turn. (36 sc)

Row 2: Ch 1, sc in each sc across, turn.

Rows 3–8: Rep row 2. At the end of row 8, **change color** (see *Stitch Guide*) to pale plum, turn.

Row 9: Ch 3 (counts as first dc), **cross-st** (see *Special Stitch*) across row to last st, dc in last st change to white. (1 dc, 17 cross-sts, 1 dc)

Row 10: With RS facing, ch 1, sc in each st across, turn. (36 sc)

Row 11: Rep row 2.

Rows 12–39: Follow Afghan Center Panel chart rows 12–39. At the end of row 39, drop white to WS, turn.

Row 40: Draw up a lp of pale green, rep row 9.

Rows 41–141: Follow Afghan Center Panel graph rows 41–141.

Edging

Rnd 1 (RS): With size G hook and white, ch 1, sc evenly sp around Center Panel, working 3 sc in each corner, join in beg sc, fasten off, do not turn.

Rnd 2: Attach petal pink in top right center corner sc, ch 3, 2 dc in same sc, work cross-st around entire outer edge, working 3 dc in each center corner sc of rem 3 corners, join in 3rd ch of beg ch-3, fasten off. (4 corners, 18 cross-sts each top and bottom, 73 cross-sts each side)

Side Panel

Make 2.

Row 1 (RS): Starting at bottom with size J hook and white, ch 37, sc in 2nd ch from hook, sc in each rem ch across, turn. (36 sc)

Rows 2–141: Follow Afghan Side Panel chart rows 2–141, ch 1 to beg each sc row, follow row 9 of Center Panel for cross-st rows and always beg each row following a cross-st row with RS facing.

Edging

Rnds 1 & 2: Rep Edging rnds 1 and 2 of Center Panel.

Assembly

With petal pink, sl st or whip-stitch a Side Panel to each side of the Center Panel.

Afghan Trim

Rnd 1 (RS): With size G hook, attach petal pink in center dc in top right corner, ch 3, 2 dc in same dc as beg ch-3, dc in next dc, work 58 cross-sts across top edge, dc in first dc of 3-dc corner, 3 dc in next dc, dc in next dc, work 73 cross-sts down left side edge, dc in first dc of 3-dc corner, 3 dc in next dc, dc in next dc, work 58 cross-sts across bottom, dc in first dc of 3-dc corner, dc in next dc, work 73 cross-sts across right side, dc in first dc of 3-dc corner, join in 3rd ch of beg ch-3, fasten off. (262 cross-sts, 4 corners)

Rnd 2 (RS): Attach white in center corner dc of previous rnd, ch 1, (sc, ch 3, sc) in same st as beg ch-1, sk next dc, [(sc, ch 3, sc) in next dc, sk next dc] around, join in beg sc, fasten off.

BURP PAD

Row 1 (RS): With size G hook and white, ch 37, sc in 2nd ch from hook, sc in each rem ch across, turn. (36 sc)

Rows 2–92: Follow Side Panel chart rows 41–132. At the end of row 92, do not fasten off.

Edging

Rnd 1 (RS): With size G hook, ch 1, sc evenly sp around, working 3 sc in each corner, join in beg sc, fasten off.

Rnd 2 (RS): Attach petal pink in center dc of top right corner, ch 3, 2 dc in same st, cross-st around working 3 dc in each center corner sc, join in beg ch-3. (18 cross-sts top and bottom, 47 cross-sts each side, 4 corners)

Rnd 3 (RS): Attach white in center dc of right top corner, ch 1, (sc, ch 3, sc) in same dc, sk next dc, [(sc, ch 3, sc) in next dc, sk next dc] around, join in beg sc, fasten off.



Recently we offered
a nursery set for baby
boys. It's only fair to
let the baby girls have
one as well!

BIB

Row 1 (RS): With size G hook and white, ch 37, sc in 2nd ch from hook, sc in each rem ch across, turn. (36 sc)

Row 2: Ch 1, sc in each sc across, drop white to back of work, turn.

Row 3: Attach pale plum, following Side Panel chart, work row 71, fasten off. (1 dc, 17 cross-sts, 1 dc)

Row 4: With RS facing, pick up white, ch 1, sc in each dc across, turn. (36 sc)

Rows 5–21: Follow Side Panel chart rows 110–126. At the end of row 21, drop white to WS, turn.

Row 22: Attach pale green, rep row 3.

Row 23: Rep row 4.

Rows 24–26: Ch 1, sc in each sc across, turn.

Right Neck Shaping

Row 27: Ch 1, sc in each of next 14 sc, turn. (14 sc)

Row 28: Ch 1, sc dec (see *Stitch Guide*) in next 2 sc, sc in each rem sc across, turn. (13 sc)

Row 29: Ch 1, sc in each sc across to last 2 sc, sc dec in next 2 sc, turn. (12 sc)

Row 30: Rep row 28. (11 sc)

Row 31: Rep row 29. (10 sc)

Row 32: Rep row 28. (9 sc)

Row 33: Ch 1, sc dec in next 2 sc, sc across to last sc, 2 sc in last sc, turn. (9 sc)

Row 34: Ch 1, 2 sc in first sc, sc in each sc across to last 2 sc, sc dec in next 2 sc, turn. (9 sc)

Rows 35–46: Rep rows 33 and 34. At the end of row 46, fasten off.

Left Neck Shaping

Row 27: Sk next 8 sc of row 26 of Bib, attach white in next sc, ch 1, sc in same sc as beg ch-1, sc in each of next 13 sc, turn. (14 sc)

Row 28: Ch 1, sc in each sc across to last 2 sc, sc dec in next 2 sc, turn. (13 sc)

Row 29: Ch 1, sc dec in next 2 sc, sc in each rem sc across, turn. (12 sc)

Row 30: Rep row 28. (11 sc)

Row 31: Rep row 29. (10 sc)

Row 32: Rep row 28. (9 sc)

Row 33: Ch 1, 2 sc in first sc, sc in each sc across to last 2 sc, sc dec in

next 2 sc, turn. (9 sc)

Row 34: Ch 1, sc dec in next 2 sc, sc in each rem sc across, turn. (9 sc)

Rows 35–46: Rep rows 33 and 34. At the end of row 46, do not fasten off.

Edging

Rnd 1 (RS): Ch 1, sc evenly sp around outer edge of Bib, working 3 sc in each corner st, join in beg sc, fasten off.

Row 2 (RS): Sk sts around neckline opening, attach petal pink to top corner of Right Neck Shaping, ch 3, cross-st evenly sp around with 1 dc in each center corner lower edge sc, ending with dc in last sc before neckline corner 3-sc group, sc in each of next 2 sc, ch 6, sc in next sc (*button lp*), fasten off.

Row 2: Attach white in first dc of previous row, ch 1, (sc, ch 3, sc) in same st as beg ch-1, [sk next dc, (sc, ch 3, sc) in next dc] across, ending with sl st in first sc before button lp, fasten off.

Sew button opposite button lp.

BASKET

Outer Bottom

Row 1: With size G hook and white, ch 51, sc in 2nd ch from hook, sc in each rem ch across, turn. (50 sc)

Rows 2–24: Ch 1, sc in each sc across, turn.

Outer Bottom Edging

Rnd 25: Now working in rnds, ch 1, sc evenly sp around outer edge of Outer Bottom, working 3 sc in each corner sc, join in beg sc.

First Short Side

Row 1 (RS): Now working in rows, working in **front lp** (see *Stitch Guide*) of each st only, ch 1, sc in each of next 24 sc, turn. (24 sc)

Row 2: Ch 1, sc in each sc across, turn.

Row 3: Rep row 2, fasten off.

Row 4 (RS): Attach pale yellow, ch 3, work 11 cross-sts across, ending with dc in last st, fasten off. (1 dc, 11 cross-sts, 1 dc)

Row 5 (RS): Attach white, ch 1, sc

in each dc across, turn.

Row 6 (WS): Rep row 2, drop white.

Row 7: With pale plum, rep row 4.

Rows 8 & 9: Rep rows 5 and 6.

Row 10: With pale green, rep row 4.

Rows 11 & 12: Rep rows 5 and 6.

Row 13: With petal pink, rep row 4.

Rows 14–16: Rep row 2. At the end of row 16, fasten off.

First Long Side

Row 1 (RS): Working in front lps only, sk next st of rnd 25 of Outer Bottom Edging, attach white in next st, ch 1, sc in same st as beg ch-1, sc in each of next 51 sts, turn. (52 sc)

Row 2: Ch 1, sc in each sc across, turn.

Rows 3–20: Rep row 2 following Outer Basket chart rows 3–20. At the end of row 20, fasten off.

2nd Short Side

Row 1 (RS): Working in front lps only, sk next st of rnd 25 of Outer Bottom Edging, attach white in next st, ch 1, sc in same st as beg ch-1, sc in each of next 23 sts, turn. (24 sc)

Rows 2–16: Rep rows 2–16 of First Short Side.

2nd Long Side

Row 1 (RS): Working in front lps only, sk next st of rnd 25 of Outer Bottom Edging, attach white in next st, ch 1, sc in same st as beg ch-1, sc in each of next 51 sts, turn. (52 sc)

Rows 2–20: Rep rows 2–20 of First Long Side.

Assembly

With tapestry needle, whipstitch corners tog to form a box, using care to match rows of short and long sides tog, matching a cross-st row to 2 sc rows.

Inner Bottom

Rows 1–24: With petal pink, rep rows 1–24 of Outer Bottom.

Inner Bottom Edging

Rnd 25: With petal pink, rep rnd 25 of Outer Bottom Edging.

Continued on page 38

Black-Eyed Susan Sweater Clasp

Design by Denise Rothberg

SKILL LEVEL



FINISHED SIZE

Flower: 4 inches in diameter
Overall length: 11 inches

MATERIALS

- Size 10 crochet cotton (350 yds per ball):
30 yds black
- Size 4 crochet cotton (11 yds per skein):
6 skeins golden yellow
10 yds green
- Size 8/1.50mm steel crochet hook or size needed to obtain gauge
- Tapestry needle
- 1½-inch alligator clasps: 2
- 5mm jump rings: 2
- Hot-glue gun
- ¾-inch bumblebee button
- Scrap of fiberfill

GAUGE

4 hdc = ½ inch

PATTERN NOTES

Weave in loose ends as work progresses.

Join rounds with a slip stitch unless otherwise stated.

SPECIAL STITCH

Back post single crochet (bpsc): Insert hook back to front to back around vertical post of hdc, yo, draw up a lp, yo, draw through 2 lps on hook.

FLOWER

Make 2.

Center

Rnd 1: With black, ch 3, 7 hdc in 3rd ch from hook, join in 3rd ch of beg ch-3. (8 hdc)

Rnd 2: Ch 2 (counts as first hdc

throughout), hdc in same st as beg ch-2, 2 hdc in each of next 7 hdc, join in 2nd ch of beg ch-2. (16 hdc)

Rnd 3: Ch 2, hdc in each hdc around, join in 2nd ch of beg ch-2.

Rnd 4: Ch 2, 2 hdc in next hdc, [hdc in next hdc, 2 hdc in next hdc] around, join in 2nd ch of beg ch-2. (24 hdc)

Rnd 5: Ch 1, **bpsc** (see *Special Stitch*) around each hdc, join in beg bpsc. (24 bpsc)

Stuff lightly with fiberfill, continue to stuff as work progresses.

Rnd 6: Ch 2, **hdc dec** (see *Stitch Guide*) in next 2 sts, [hdc in next st, hdc dec in next 2 sts] around, join in 2nd ch of beg ch-2. (16 hdc)

Rnd 7: [Hdc dec in next 2 sts] around, join, leaving a length of crochet cotton, fasten off. (8 hdc)

Petals

Rnd 8: Attach golden yellow in

any hdc of rnd 4, ch 13, hdc in 3rd ch from hook, hdc in each rem ch across, sc in same hdc as beg ch-13, sc in next hdc, [ch 13, hdc in 3rd ch from hook, hdc in each rem ch across, sc in each of next 2 sc of rnd 4] 11 times, [working in opposite side of foundation ch, hdc in each of next 11 chs, sl st in top of petal, sl st in each hdc down opposite side of petal, sl st in next 2 sc] 12 times, join, fasten off.

VINE

With green, ch 50, sc in 2nd ch from hook, sc in each rem ch across, fasten off.

Attach a jump ring to each end of Vine. Attach an alligator clasp to each jump ring.

With WS of Flowers facing, glue an alligator clasp to the center of each center of Flower.

Glue bumblebee button to front center of a Flower. ☞



Make this fun and funky
1950s-style sweater clasp for
giggles and grins!



A charming doily in a chevron pattern, crocheted in patriotic colors, makes an all-American table decor.

Chevrons on Parade

Design by Louise Puchaty

SKILL LEVEL

■■■■■ INTERMEDIATE

FINISHED SIZE

11¼ x 18¼ inches

MATERIALS

- DMC Cebelia size 10 crochet cotton (284 yds ball):
 - 1 ball #1 white (A)
 - 15 yds each #666 bright red (B) and #797 royal blue (C)
- DMC Cebelia size 20 crochet cotton (416 yds ball):
 - 12 yds white (D)
 - 8½ yds #666 bright red (E)
 - 7½ yds #797 royal blue (F)
- Sizes 8/1.50mm and 10/1.15mm steel crochet hooks or sizes needed to obtain gauge
- Size 28 tapestry needle
- Sewing needle
- Seed beads: 9 red and 10 blue

GAUGE

5 ch-1 sps = 1 inch; 5 rows = 1 inch

PATTERN NOTES

Weave in loose ends as work progresses.

Join rounds with a slip stitch unless otherwise stated.

SPECIAL STITCHES

2 double crochet cluster (2-dc cl): Yo, insert hook in next dc, yo, draw up a lp, yo, draw through 2 lps on hook, yo, sk next 2-dc cl, insert hook in next dc, yo, draw up a lp, yo, draw through 2 lps on hook, yo, draw through rem 3 lps on hook.

Beginning 2-double crochet cluster (beg 2-dc cl): Ch 3, sk next dc, dc in next dc.

Ending 2-double crochet cluster (end 2-dc cl): Yo, insert hook in next dc, yo, draw up a lp, yo, draw through 2 lps on hook, sk 2-dc cl directly below, yo, insert hook in 3rd

ch of beg ch-3, yo, draw up a lp, yo, draw through 2 lps on hook, yo, draw through rem 3 lps on hook.

DOILY

Row 1 (WS): With size 8 hook and A, ch 233, dc in 4th ch from hook, *[ch 1, sk next ch, dc in next ch] 5 times, ch 2, dc in same ch, [ch 1, sk next ch, dc in next ch] 4 times**, ch 1, sk next ch, yo, insert hook in next ch, yo, draw up a lp, yo, draw through 2 lps on hook, yo, sk next 2 chs, insert hook in next ch, yo, draw up a lp, yo, draw through 2 lps on hook, yo, draw through rem 3 lps on hook, rep from * across, ending last rep at **, **end 2-dc cl** (see *Special Stitches*) over rem sts, turn. (10 peaks)

Row 2: Beg 2-dc cl (see *Special Stitches*), *[ch 1, dc in next dc] 4 times, ch 1, (dc, ch 2, dc) in next ch-2 sp, [ch 1, dc in next dc] 4 times, ch 1, work **2-dc cl** (see *Special Stitches*), rep from * across, ending with end 2-dc cl at end of row, turn.

Rows 3 & 4: Rep row 2. At the end of row 4, fasten off.

Row 5: With B, rep row 2.

Row 6: With A, rep row 2.

Row 7: With C, rep row 2.

Rows 8-34: With A, rep row 2.

Row 35: With C, rep row 2.

Row 36: With A, rep row 2.

Row 37: With B, rep row 2.

Rows 38-41: With A, rep row 2.

Trim

Row 1: With RS facing with size 8 hook, attach A in side edge of row 1 of Doily, ch 1, sc evenly sp across side edge of rows, fasten off.

Row 2: With RS facing and size 8 hook, attach A in opposite side edge in row 41 of Doily, ch 1, sc evenly sp across side edge of rows, fasten off.

FLOWERS

Make 9 royal blue (F) & 10 bright red (E).

Rnd 1: With size 10 hook and D, ch 4, 11 dc in 4th ch from hook, join in top of beg ch-4, fasten off. (12 dc)

Rnd 2: Attach E or F with a sl st in any dc, ch 3 (counts as first dc), (dc, ch 2, 2 dc) in same dc as beg ch-3, ch 1, [sk next 2 dc, (2 dc, ch 2, 2 dc) in next st, ch 1] around, join in 3rd ch of beg ch-3, fasten off.

Sew a red seed bead to the center of each royal blue Flower and a blue seed bead to the center of each bright red Flower.

Alternating Flower colors, sew Flowers in the outer peaks on each end of Doily. ☞

HINT!

ENLARGE THOSE GRAPHS!

For many of us older folk, the design charts and graphs that come with our projects are just too small to read. Most copy machines enlarge, so I take mine downtown and have the librarian copy them onto 11 x 17-inch paper. Then, I tape the enlarged chart to a piece of cardboard to stiffen it. As I work each row or color, I mark it off the chart with a highlighter pen to help me keep track of where I am. Sometimes I also enlarge the magazine directions and do the same thing with them.

Kathi Purnell
Horseshoe Bend, Ark.

Online Marketplace

LNS Software Solutions LLC
GET ORGANIZED!
www.OrganizingSoftware.com

Crochet
WORLD
www.Crochet-World.com

People Pillows

Designs by Agnes Russell

SKILL LEVEL

■ □ □ □ BEGINNER

FINISHED SIZE

22 inches tall

MATERIALS

- Red Heart Super Saver medium (worsted) weight yarn (solids: 7 oz/364 yds/198g per skein; prints: 5 oz/278 yds/141g per skein):
2 skeins #334 buff
2 oz/113 yds/56g each #322 pale yellow, #994 banana berry print and #360 café
- Patons Twister super bulky (super chunky) yarn (1 3/4 oz/47 yds/50g per skein):
1 skein #05711 fruit loops
- Sizes G/6/4mm and L/11/8mm crochet hooks or sizes needed to obtain gauge
- Tapestry needle
- 24 inches 3/8-inch-wide pink satin ribbon
- 2 sheets artist stiff 7-count plastic canvas
- Fiberfill
- 2 stitch markers

GAUGE

Size G hook: 4 sc = 1 inch; 4 sc rows = 1 inch

PATTERN NOTES

Weave in loose ends as work progresses.

Join rounds with a slip stitch unless otherwise stated.

Use size G hook unless otherwise indicated.

GIRL PILLOW

Make 2.

Head

Row 1: Starting at top of head, with size G hook and buff, ch 15, sc in 2nd ch from hook, sc in each rem ch across, turn. (14 sc)

Row 2: Ch 1, 2 sc in first sc, sc in

each sc across, 2 sc in last sc, turn. (16 sc)

Row 3: Ch 1, sc in each sc across, turn.

Rows 4–13: Rep rows 2 and 3. (26 sc)

Rows 14–16: Rep row 3.

Row 17: Ch 1, sc dec (see *Stitch Guide*) in next 2 sc, sc in each sc across to last 2 sc, sc dec in next 2 sc, turn. (24 sc)

Row 18: Rep row 17. (22 sc)

Row 19: Rep row 3.

Rows 20 & 21: Rep row 17. (18 sc)

Row 22: Rep row 3.

Rows 23–27: Rep row 17. (8 sc)

Neck

Rows 28–30: Rep row 3.

Body

Row 31: Rep row 2. (10 sc)

Row 32: Rep row 3.

Row 33: Rep row 2, fasten off. (12 sc)

Arms

Row 34: With buff, ch 14, sc in each of next 12 sc across row 33 of Body, ch 15, turn.

Row 35: Sc in 2nd ch from hook, sc in each of next 13 chs, sc in each of next 12 sc, sc in each of next 14 chs, turn. (40 sc)

Row 36: Rep row 3.

Row 37: Rep row 2. (42 sc)

Row 38: Rep row 3.

Row 39: Rep row 17. (40 sc)

Rows 40 & 41: Rep row 3.

Body Continued

Row 42: Sl st in each of next 11 sc, (sl st, ch 1, sc) in next sc, sc in each of next 17 sc, leaving rem 11 sc unworked, turn. (18 sc)

Row 43: Rep row 2. (20 sc)

Rows 44–46: Rep row 3.

Row 47: Rep row 2. (22 sc)

Rows 48–50: Rep row 3.

Row 51: Rep row 2. (24 sc)

Rows 52–54: Rep row 3.

Row 55: Rep row 2. (26 sc)

Rows 56–60: Rep row 3.

Row 61: Rep row 2. (28 sc)

Rows 62–66: Rep row 3.

Row 67: Rep row 2. (30 sc)

Rows 68–72: Rep row 3.

First Leg

Row 73: Sl st in each of next 5 sc, (sl st, ch 1, sc) in next sc, sc in each of next 6 sc, turn. (7 sc)

Rows 74–79: Ch 1, sc in each of next 7 sc, turn. At the end of row 79, fasten off.

2nd Leg

Row 73: With finished leg to the right, sk next 6 sc of row 72, attach buff in next sc, ch 1, sc in same sc as beg ch-1, sc in each of next 6 sc, turn. (7 sc)

Rows 74–79: Ch 1, sc in each sc across, turn. At the end of row 79, draw up a lp, remove hook, do not fasten off.

Plastic Canvas Insert

Using Girl Pillow as a pattern, trace around outer edge onto sheet of plastic canvas.

Rnd 80: Now working in rnds, pick up dropped lp from row 79, ch 1, sc evenly sp around outer edge, working 2 sc in each outer corner of each leg and each arm, 3 sc in each lower outer corner of row 72 of bottom of dress, join in beg sc, fasten off.

Assembly

Rnd 81: Holding front and back with WS facing, working through both thicknesses, with front facing and with plastic canvas sandwiched between layers of crocheted pieces, with size G hook, attach buff at left underarm, ch 1, sc evenly spaced around body to top row of head (14 sc sts), working through top lps only, sc in each of next 14 sts, working through both thicknesses and inc at outer corners as needed, sc in each rem st around, stuffing with fiberfill as work progresses on each front and back of plastic canvas, join in beg sc, fasten off.

Continued on page 34



Here's a huggable boy and girl that
may be cousins to gingerbread
people! They're simple to make!



Offer those who enter your home a
heartfelt sentiment with this wonderful
15 x 19-inch wall hanging.

Hearty Welcome Home Wall Hanging

Design by Alzy Leisner

SKILL LEVEL

■■■■■ INTERMEDIATE

FINISHED SIZE

15½ x 19½ inches

MATERIALS

- J. & P. Coats Royale size 30 crochet cotton (500 yds per ball):
 - 2 balls # 201 white
- Size 12/1.00mm steel crochet hook or size needed to obtain gauge
- Sewing needle
- White thread
- Straight pins
- Tacky glue
- 16 x 20-inch picture frame
- 16 x 20-inch poster board
- 17 x 21-inch red cotton fabric

GAUGE

Rnds 1-4 = 2½ inches

PATTERN NOTES

Weave in loose ends as work progresses.

Join rounds with a slip stitch unless otherwise stated.

Right-handers: Read chart (page 40) right to left for odd-numbered rows and left to right for even-numbered rows. Left-handers: Read chart left to right for odd-numbered rows and right to left for even-numbered rows.

Follow chart from top downward. Row 1 is top of wall hanging.

SPECIAL STITCHES

Space (sp): Ch 2, sk next 2 sts, tr in next st.

Block: Tr in each of next 2 sts, tr in next tr.

Shell: (3 tr, ch 3, 3 tr) in indicated sp.

WELCOME WALL HANGING

Row 1: Ch 261, tr in 9th ch from

hook, work a **sp** (see *Special Stitches*) 84 times across row, turn. (85 sps)

Row 2: Ch 6 (counts as first tr, ch 2), work 34 sps, 2 **blocks** (see *Special Stitches*), 1 sp, 2 **blocks**, 45 sps, turn.

Note: Remember for left-handers, work opposite, ch 6, 44 sps, 2 **blocks**, 1 sp, 2 **blocks**, 35 sps, turn.

Rows 3-67: Ch 6 to beg each row, work **blocks** and **sps** across each row, turn. At the end of row 67, fasten off.

Edging

Rnd 1: With RS facing, attach white in corner and working across foundation ch of row 1, ch 4 (counts as first tr), (4 tr, ch 3, 5 tr) in same corner sp, *[ch 2, sk 1 sp, sc in next sp, ch 2, **shell** (see *Special Stitches*) in next sp] 20 times, ch 2, sk 1 sp, sc in next sp, ch 2, sk next sp, (5 tr, ch 3, 5 tr) in next corner sp (20 **shells**, 21 sc, 2 corner sps), working across

Continued on page 40

BOOK REVIEW

PERFECT FOR BEGINNERS - 3 BOOKS FOR YOUR LIBRARY!

TEACH YOURSELF VISUALLY™ CROCHETING

By Kim P. Werker and Cecily Keim, \$24.99 U.S./\$31.99 Canada, Wiley Publishing, 111 River St., Hoboken, NJ 07030-5774, www.wiley.com

Both beginners and those who want to brush up or improve their skills will see exactly how they should execute a stitch or project. All the basic how-to is covered. Included are full-color photographs that demonstrate step-by-step instructions on two-page spreads. The authors show how to make several garments, accessories and home decors from just one ball of yarn and a hook.

SO SIMPLE CROCHET

By Melody Griffiths, \$19.95, Creative Homeowner, 24 Park Way, Upper Saddle River, NJ 07458, www.creativehomeowner.com

Perfect for beginners and more advanced crocheters, this book teaches the basics, and then these skills are put to use in the projects of varying difficulty. Contains full-color photographs and illustrations with easy-to-follow instructions. 24 projects use the latest and most popular yarns for the fashion conscious.

BEGINNER'S GUIDE TO CROCHET

By Pauline Turner, \$17.95, Search Press USA, 1338 Ross St., Petaluma, CA 94954, www.searchpress.com

Offers a rich source of stimulating and inspirational ideas that appeal to all. Lovely designs illustrate all the different techniques, with step-by-step guidance. Colorful photographs with practical, detailed instructions show you how easy it is to create your own crochet designs.

Delicate Cobweb Runner

Design by Louise Puchaty

SKILL LEVEL

■ ■ ■ ■ ■ INTERMEDIATE

FINISHED SIZE

13½ x 21½ inches

MATERIALS

- DMC Cebelia size 20 crochet cotton (415 yds/50g per ball): 550 yds/62.5g #20 ecru
- Size 10/1.15mm steel crochet hook or size needed to obtain gauge
- Tapestry needle
- Craft glue

GAUGE

10 blocks = 2 inches; 11 rows = 2 inches

PATTERN NOTES

Weave in loose ends as work progresses.

Join rounds with a slip stitch unless otherwise stated.

Following chart on page 35, read odd numbered rows right to left and even numbered rows from left to right.

SPECIAL STITCH

Shell: [2 dc, ch 3, 2 dc] in indicated st.

PLAIN PANEL

Make 2.

Row 1: Ch 68, dc in 8th ch from hook, [ch 2, sk next 2 ch, dc in next ch (1 sp)] 20 times, turn. (21 sps)

Row 2: Ch 5 (counts as first dc, ch 2), dc in next dc, [ch 2, sk next ch-2 sp, dc in next dc] 20 times, turn.

Row 3: Ch 5, [dc in next dc, ch 2, sk next ch-2 sp] 9 times, dc in next dc, 2 dc in next ch-2 sp, dc in next dc (1 block), [ch 2, sk next ch-2 sp, dc in next dc] 10 times, turn. (10 sps, 1 block, 10 sps)

Row 4: Ch 5, [dc in next dc, ch 2, sk next ch-2 sp] 8 times, dc in next dc, 2 dc in next ch-2 sp, dc in next dc, ch 2, sk next 2 dc, dc in next dc,

2 dc in next ch-2 sp, dc in next dc, [ch 2, sk next ch-2 sp, dc in next dc] 9 times, turn. (9 sps, 1 block, 1 sp, 1 block, 9 sps)

Row 5: Ch 5, [dc in next dc, ch 2, sk next ch-2 sp] 7 times, dc in next dc, 2 dc in next ch-2 sp, [ch 2, sk next 2 sts, dc in next dc] 3 times, 2 dc in next ch-2 sp, dc in next dc, [ch 2, sk next 2 sts, dc in next dc] 8 times, turn. (8 sps, 1 block, 3 sps, 1 block, 8 sps)

Row 6: Ch 5, [dc in next dc, ch 2, sk next ch-2 sp] 6 times, dc in next dc, 2 dc in next ch-2 sp, dc in next dc, [ch 2, sk next 2 sts, dc in next dc] 5 times, 2 dc in next ch-2 sp, dc in next dc, [ch 2, sk next ch-2 sp, dc in next dc] 8 times, turn. (7 sps, 1 block, 5 sps, 1 block, 7 sps)

Row 7: Ch 5, [dc in next dc, ch 2, sk next ch-2 sp] 6 times, ch 2, sk next 2 sts, dc in next dc, 2 dc in next ch-2 sp, [dc in next dc, ch 2, sk next 2 sts] 3 times, dc in next dc, 2 dc in next ch-2 sp, dc in next dc, ch 2, sk next 2 sts, dc in next dc, [ch 2, sk next ch-2 sp, dc in next dc] 7 times, turn. (8 sps, 1 block, 3 sps, 1 block, 8 sps)

Rows 8–20: Following Plain Panel chart rows 8–20, ch 5 to beg each row and turn at the end of each row.

Rows 21–104: Rep rows 15–20.

Rows 105–118: Rep rows 15 down through row 2.

Row 119: Rep row 2, fasten off. (21 sps)

COBWEB PANEL

Row 1: Ch 68, dc in 8th ch from hook, [ch 2, sk next 2 ch, dc in next ch] 20 times, turn. (21 sps)

Row 2: Ch 5, dc in next dc, [ch 2, sk next ch-2 sp, dc in next dc] 20 times, turn.

Row 3: Ch 5, [dc in next dc, ch 2, sk next ch-2 sp] 9 times, dc in next dc, 2 dc in next ch-2 sp, dc in next dc, [ch 2, sk next ch-2 sp, dc in next dc] 10 times, turn. (10 sps, 1 block, 10 sps)

Row 4: Ch 5, [dc in next dc, ch 2, sk next ch-2 sp] 8 times, dc in next dc, 2 dc in next ch-2 sp, dc in next dc, ch 3, sk next 2 dc, dc in next dc, 2 dc in next ch-2 sp, dc in next dc, [ch 2, sk next ch-2 sp, dc in next dc] 9 times, turn. (9 sps, 1 block, ch-3 sp, 1 block, 9 sps)

Row 5: Ch 5, [dc in next dc, ch 2, sk next ch-2 sp] 7 times, dc in next dc, 2 dc in next ch-2 sp, dc in next dc, ch 5, sc in 2nd ch of next ch-3 sp, ch 3, sk next 3 dc, dc in next dc, 2 dc in next ch-2 sp, dc in next dc, [ch 2, sk next ch-2 sp, dc in next dc] 8 times, turn. (8 sps, 1 block, 2 ch-5 sps, 1 block, 8 sps)

Row 6: Ch 5, [dc in next dc, ch 2, sk next ch-2 sp] 6 times, dc in next dc, 2 dc in next ch-2 sp, dc in next dc, [ch 5, sc in 3rd ch of next ch-5 sp] twice, ch 5, sk next 3 dc, dc in next dc, 2 dc in next ch-2 sp, dc in next dc, [ch 2, sk next ch-2 sp, dc in next dc] 7 times, turn. (7 sps, 1 block, 3 ch-5 sps, 1 block, 7 sps)

Row 7: Ch 5, [dc in next dc, ch 2, sk next ch-2 sp] 6 times, dc in next dc, ch 2, sk next 2 dc, dc in next dc, 2 dc over next 2 ch of ch-5 sp, dc in 3rd ch of same ch-5 sp, ch 5, sc in 3rd ch of next ch-5 sp, 2 dc over next 2 ch of same ch-5 sp, dc in next dc, ch 2, sk next 2 dc, dc in next dc, [ch 2, sk next ch-2 sp, dc in next dc] 7 times, turn. (8 sps, 1 block, 2 ch-5 sps, 1 block, 8 sps)

Row 8: Ch 5, [dc in next dc, ch 2, sk next ch-2 sp] 7 times, dc in next dc, ch 2, sk next 2 dc, dc in next dc, 2 dc over next 2 ch of ch-5 sp, dc in 3rd ch of same ch-5 sp, ch 2, dc in 3rd ch of next ch-5 sp, 2 dc over next 2 ch of same ch-5 sp, dc in next dc, ch 2, sk next 2 dc, dc in next dc, [ch 2, sk next ch-2 sp, dc in next dc] 8 times, turn. (9 sps, 1 block, 1 ch-2 sp, 1 block, 9 sps)

Row 9: Ch 5, [dc in next dc, ch 2, sk next ch-2 sp] 8 times, dc in next dc, ch 2, sk next 2 dc, dc in next dc, 2 dc in next ch-2 sp, dc in next dc, ch 2,

Size 20 crochet cotton created this graceful and dainty table runner which any crocheter would be proud to display.



sk next 2 dc, dc in next dc, [ch 2, sk next ch-2 sp, dc in next dc] 9 times, turn. (10 sps, 1 block, 10 sps)

Rows 10-104: Following Cobweb Panel chart, ch 5 to beg each row and turn at the end of each row, work sps, blocks and cobwebs as indicated, working sts within the cobweb the same as the first. Rep rows 15-20 a total of 15 times.

Rows 105-118: Rep rows 15-20.

Row 119: Rep row 2, fasten off.

COBWEB PANEL EDGING

Rnd 1 (RS): Attach ecru in any

corner, ch 1, (sc, 2 dc, ch 3, 2 dc) in same corner sp, *sc in next sp, shell (see *Special Stitch*) in next sp, rep from * around, working (shell, sc, shell) in each corner sp, ending with shell in same sp as beg sc shell, join in beg sc, fasten off. (11 shells each short edge, 60 shells each long edge)

PLAIN PANEL EDGING

Rnd 1 (RS): Attach ecru in any corner, ch 1, (sc, 2 dc, ch 3, 2 dc) in same corner sp, *[sc in next sp, shell

Continued on page 36

Crochet Sal's

*Original crochet patterns
for all occasions.*

New patterns added monthly!

Patterns sold individually,
or subscribe for \$3.95/month

www.crochetsal.com

email: crochetsal@yahoo.com

phone: 1-519-733-8127



*Present a new
mom with a soft and
useful gift—this
darling baby blanket.*

Dreamland Stripes

Design by Aline Suplinskas

SKILL LEVEL

■ ■ ■ ■ ■ INTERMEDIATE

FINISHED SIZE

31½ x 40 inches

MATERIALS

- Pompadour fine (baby) weight yarn:
 - 6 skeins white
 - 1 oz each lavender, pastel green, pastel yellow, aqua and pastel blue
- Sizes G/6/4mm and H/8/5mm crochet hooks or sizes needed to obtain gauge

GAUGE

Size G hook: 4 dc = 1 inch;
4 rows = 2½ inches

Size H hook: [Sc, ch 1] twice = 1 inch; rnds 1–4 = ¾ inch

PATTERN NOTES

Weave in loose ends as work progresses.

Join rounds with a slip stitch unless otherwise stated.

Fasten off yarn at end of indicated row; work over remaining end in following row.

AFGHAN

Row 1 (RS): With size G hook and white, ch 138, dc in 3rd ch from hook, dc in each rem ch across, turn. (137 dc)

Row 2: Ch 2 (counts as first dc throughout), dc in each st across, **change color** (see *Stitch Guide*) to pastel blue in last dc, turn.

Row 3: Ch 2, dc in next dc, [fpdc (see *Stitch Guide*) around next dc, dc in each of next 5 dc] 22 times, fpdc around next dc, dc in each of next 2 dc, change color to white in last dc, turn.

Row 4: Ch 2, dc in next dc, [bpdc (see *Stitch Guide*) around next dc, dc in each of next 5 dc] 22 times, bpdc around next dc, dc in each of next 2 dc, turn.

Row 5: Ch 2, dc in each st across, change color to lavender in last dc, turn.

Row 6: Ch 2, dc in each of next 4 dc, [bpdc around next dc, dc in each of next 5 dc] 22 times, change color to white in last dc, turn.

Row 7: Ch 2, dc in next 4 dc, [fpdc in next dc, dc in each of next 5 dc] 22 times, turn.

Row 8: Ch 2, dc in each st across, change color to aqua in last dc, turn.

Row 9: Rep row 3, change color to white.

Row 10: Rep row 4.

Row 11: Rep row 5, change color to pastel yellow.

Row 12: Rep row 6, change color to white.

Row 13: Rep row 7.

Row 14: Rep row 8, change color to pastel green.

Row 15: Rep row 3, change color to white.

Row 16: Rep row 4.

Rows 17–92: Continue to rep established pat and color sequence. At the end of row 92, do not fasten off or turn.

Border

Rnd 1 (RS): With size H hook, working down side edge of rows, ch 1, [2 sc in each white row edge and 1 sc in each colored row edge] across to corner, working 4 sc in corner st, working across opposite side of foundation ch, [sk 2 dc, 2 sc in next sp between dc] across to corner, working 4 sc in corner, [2 sc in each white row edge and 1 sc in each colored row edge] across to corner, working 4 sc in corner st, working across top of afghan, [sk 2 dc, 2 sc in next sp between dc] across to corner, work 2 sc in same st as beg 2 sc, join in beg sc.

Rnd 2: Ch 1, 2 sc in next st, *ch 1, sk next sc, [sc in next sc, ch 1, sk next sc] across to center 2 corner sc**, 2 sc in each of next 2 sc, rep from * around, ending last rep at **, 2 sc in next sc to complete corner, join in beg sc.

Rnd 3: Ch 1, 2 sc in first st, [ch 1, sc in next ch-1 sp] around, working 2 sc in each 2 center corner sc sts, join in beg sc.

Rnd 4: Rep rnd 3, fasten off. ❧

PRODUCT REVIEW

NEW YARNS—FROM KONA BAY KNITTING

KONA BAY KNITTING BUILDS ON EXPERIENCE

Known for their trend-setting ways and high-quality products, Honolulu-based Kona Bay Fabrics has launched a fabulous new line of yarn. Kona Bay Knitting has enthusiastically entered the marketplace with 39 varieties of yarn, each in six colors. Playful names like Kitty Blanket and Bubble Bath provide a descriptive illustration of the fun and unbeatable versatility of the first round of offerings.

The yarn quality includes a range from synthetic mixes with a silky soft drape and iridescent eyelashes like Jewels to 60 percent Merino wool named Candy with a rich natural hand and color selection.

The corporate offices are in Honolulu, and the warehouse and shipping operations are housed in Redmond, Wash. Visit their Web site at www.konabay.com for a peek at yarn from this exciting new company.

People Pillows

Continued from page 26

Hair

With front facing, counting downward from the 14 sts at top of Head, place a marker in 15th st on each the right and left of Head.

With front facing, with size G hook, attach pale yellow with sl st in **front lp** (see *Stitch Guide*) of first marked st at right edge, (ch 10, sl st) in same st, *(ch 10, sl st) twice in next st*, rep from * to * in front lp of each st top 14 sts at top of Head, rep from * to * in rem free lps of 14 sts of Rnd 80 across top of Head, working in front lps of rnd 81 down left edge of Head, rep from * to * to marked st, turn, working in rem free lp of rnd 81, rep from * to * to top 14 sts, working in **back lps** (see *Stitch Guide*) of rnd 81, rep from * to * across 14 sts, turn, rep from * to * across rem 14 sts of rnd 81, turn, working in rem 14 sts of rnd 80, rep from * to * across 14 sts, working in rem back lps of rnd 81, rep from * to * in next 15 sts, fasten off.

Braid

Make 2.

Cut 15 lengths of pale yellow each 18 inches in length. Pass pale yellow in groups of 5 strands through 3 sts near base of hairline. Separate into groups of 3 bundles of 10, braid strands, secure end of braid with a length of pale yellow. Tie a 12-inch length of pink ribbon around secured braid, tie ends in a bow, trim ends as desired.

GIRL'S SCARF

Row 1: With size L hook and fruit loops, ch 5, dc in first ch of ch-5, [ch 1, dc in same ch as previous dc] twice, turn. (4 dc)

Row 2: Ch 4 (counts as first dc, ch 1), dc in next dc, ch 1, sk ch-1 sp, dc in next dc, ch 1, dc in end ch sp, turn.

Rows 3–23: Rep row 2.

Row 24: Ch 3, [yo, insert hook in next dc, yo, draw up a lp, yo, draw through 2 lps on hook] 3 times, yo, draw through all 4 lps on hook, fasten off.

Hold scarf at each end, pull gently to stretch, tie each end of scarf in an overhand knot.

Wrap scarf around neckline of Girl Pillow as desired.

BOY PILLOW

Make 2.

Rows 1–57: Rep rows 1–57 of Girl Pillow. (26 sc)

First Leg

Row 58: Ch 1, sc in each of next 11 sc, turn. (11 sc)

Row 59: Ch 1, sc in each sc across, turn.

Row 60: Rep row 59.

Row 61: Ch 1, sc in each sc across to last sc, 2 sc in last sc, turn. (12 sc)

Rows 62–66: Rep row 59.

Row 67: Rep row 61. (13 sc)

Rows 68–72: Rep row 59.

Foot

Row 73: Sl st in each of next 3 sts, (sl st, ch 1, sc) in next st, sc in each of next 6 sts, turn. (7 sc)

Rows 74–79: Rep row 59.

2nd Leg

Row 58: With finished Leg to the right, sk next 4 sc of row 57, attach buff in next sc, ch 1, sc in same sc, sc in each of next 10 sc, turn. (11 sc)

Row 59: Ch 1, sc in each sc across, turn.

Row 60: Rep row 59.

Row 61: Ch 1, 2 sc in first sc, sc in each rem sc across, turn. (12 sc)

Rows 62–66: Rep row 59.

Row 67: Rep row 61. (13 sc)

Rows 68–72: Rep row 59.

Rows 73–79: Rep rows 73–79 of First Leg. At the end of row 79, draw up a lp, remove hook, do not fasten off.

Rep Plastic Canvas Insert the same as for Girl Pillow.

Rnd 80: Now working in rnds, pick up dropped lp of row 79, ch 1, sc evenly around outer edge, working 2 sc in each outer edge of each Arm and Foot and 3 sc in each outer edge of pant leg row 72.

Assembly

Rnd 81: Rep rnd 81 of Girl Pillow.

Hair

With front facing, with size G hook, attach café in rem front lp of rnd 80 at top of Head, rep in same manner as Girl's with ch-10 lps across rem free lps at front of rnd 80, turn and work across front lps of rnd 81, turn and work in rem back lps of rnd 81 and finally across rem lps at back of rnd 80, making 4 rows of ch-10 lps across top of Head only.

BOY'S PANTS

Back Waistband Ribbing

Row 1: With size G hook and banana berry, ch 6, sc in 2nd ch from hook, sc in each rem ch across, turn. (5 sc)

Rows 2–31: Ch 1, working in back lps only, sc in each st across, turn.

Back Body

Row 1: Ch 1, working in side edge of Back Waistband Ribbing, sc in side edge of each row, turn. (31 sc)

Row 2: Ch 1, sc in each sc across, turn.

Rows 3–5: Rep row 2.

Row 6: Ch 1, 2 sc in first sc, sc in each sc across to last sc, 2 sc in last sc, turn. (33 sc)

Row 7: Ch 1, sc in each of next 16 sc, 2 sc in next sc, sc in each of next 16 sc, turn. (34 sc)

Row 8: Rep row 2.

Row 9: Ch 1, 2 sc in first sc, sc in each of next 15 sc, 2 sc in each of next 2 sc, sc in each of next 15 sc, 2 sc in last sc, turn. (38 sc)

Row 10: Rep row 2, fasten off.

Front Waistband Ribbing

Row 1: With size G hook and banana berry, ch 6, sc in 2nd ch from hook, sc in each rem ch across, turn. (5 sc)

Row 2: Ch 1, working in back lps only, sc in each of next 5 sc, turn.

Row 3: Ch 1, sc in next sc, ch 3, sk 3 st (*buttonhole*), sc in next sc, turn.

Row 4: Ch 1, working in back lps only, sc in next sc, sc in each of next 3 chs, sc in next sc, turn.

Rows 5–28: Rep row 2.

Row 29: Rep row 3.

Row 30: Rep row 4.

Row 31: Rep row 5.

Front Body

Rows 1-10: Rep rows 1-10 of Back Body, at the end of row 10, do not fasten off, turn.

First Leg

Rnd 11: Now working in rnds, ch 1, working across Front Body, sc in each of next 19 sc, pick up Back Body, sk first 19 sc, sc in each of next 19 sc, join in beg sc, turn. (38 sc)

Rnd 12: Ch 1, sc in each sc around, join in beg sc, turn.

Rnd 13: Ch 1, 2 sc in first sc, sc in each of next 17 sc, 2 sc in each of next 2 sc, sc in each of next 17 sc, 2 sc in next sc, join in beg sc, turn. (42 sc)

Rnds 14-16: Rep rnd 12.

Rnd 17: [Ch 1, sl st in next sc] around, fasten off.

2nd Leg

Rnd 11: Attach banana berry at outer edge of next sc of row 10, ch 1, sc in each rem sc of Front and Back Body, join in beg sc, turn. (38 sc)

Rnds 12-17: Rep rnds 12-17 of First Leg.

Button

Make 2.

Rnd 1: With size G hook and banana berry, ch 2, 10 sc in 2nd ch from hook, join in beg sc. (10 sc)

Rnd 2: Ch 1, sc in each sc around, join in beg sc.

Rnd 3: Ch 1, [sc dec in next 2 sc] 5 times, join in beg sc, leaving a length of yarn, fasten off. (5 sc)

Weave rem length through sts of rnd 3, pull to close opening, sew button on Back Waistline Ribbing center over 3rd row from each outer edge. ✂

Watermelon Bear

Continued from page 14

At the end of rnd 21, sl st to join in next sc, leaving a length of yarn, fasten off.

Stuff Arm firmly, fold flat across top and sew opening closed and sew an Arm to each side of Body.

Foot & Leg

Make 2.

Rnd 1: Starting with Foot and paddy green, ch 2, 6 sc in 2nd ch from hook. (6 sc)

Rnd 2: 2 sc in each sc around.

Rnd 3: [Sc in next sc, 2 sc in next sc] around. (18 sc)

Rnd 4: [Sc in each of next 2 sc, 2 sc in next sc] around. (24 sc)

Rnd 5: Sc in each sc around.

Rnds 6-10: Rep rnd 5.

Rnd 11: [Sc in each of next 2 sc, sc dec in next 2 sc] around. (18 sc)

Rnd 12: [Sc in each of next 4 sc, sc dec in next 2 sc] around, sl st to join

in beg sc, change color to eggshell. (15 sc)

Rnd 13: Ch 1, sc in each sc around, sl st to join in beg sc, change color to grenadine.

Rnds 14-16: Rep rnd 5. At the end of rnd 15, change color to warm brown in last sc.

Rnds 17-27: Rep rnd 5. At the end of last rep, sl st to join in next sc, leaving a length of yarn, fasten off.

Stuff Foot and Leg firmly, fold top edge in half and sew opening closed. Sew Legs to bottom of Body.

WATERMELON

Rnd 1: Using grenadine, ch 2, 6 sc in 2nd ch from hook. (6 sc)

Rnd 2: 2 sc in each sc around.

Rnd 3: [Sc in next sc, 2 sc in next sc] around. (18 sc)

Rnd 4: [Sc in each of next 2 sc, 2 sc in next sc] around, change color to eggshell in last sc. (24 sc)

Rnd 5: [Sc in each of next 3 sc, 2 sc in next sc] around, change color to paddy green in last sc. (30 sc)

Rnd 6: [Sc in each of next 4 sc, 2 sc in next sc] around, sl st to join in next sc, leaving a length of yarn, fasten off. (36 sc)

Fold Watermelon in half and sew ends of rnd 6 tog forming wedge of Watermelon. For Watermelon seeds, sew top piece only of snap fasteners to front of Watermelon. Sew Watermelon to Bear's hand.

FINISHING

Glue 3 green buttons to center front of Body.

With coordinating ribbon, form a bow and trim ends. Sew bow to side of Head under right Ear. ✂



HINTS WANTED

Help your fellow crocheters! Send us your hints, tips and suggestions on how you make crochet easier and more fun. We'll print as many as we can. Send to:

Crochet Tips

Crochet World

P.O. Box 776

Henniker, NH 03242-0776

Pineapple Nursing Shawl



\$7.00 Download
www.crochetliving.com

Chestnut Bolero

Continued from page 12

NECK SHAPING

Row 1: Sl st across first 3 [3, 4, 4] sc, ch 1, sk last sl st and st with ch-1, sc in each of next 14 [15, 16, 17] sc, turn.

Row 2: Ch 1, sc in each sc across to last sc, turn. (13 [14, 15, 16] sc)

Row 3: Ch 1, sk first sc, sc in each rem sc across, turn. (12 [13, 14, 15] sc)

Rows 4-7: Rep rows 2 and 3. (8 [9, 10, 11] sc)

Rows 8-12: Ch 1, sc in each sc across, turn.

SLEEVE

Make 2.

Row 1 (RS): With size H hook, ch 27 [29, 29, 31], sc in 2nd ch from hook, sc in each rem ch across, turn. (26 [28, 28, 30] sc)

Row 2: Ch 1, sc in each sc across, turn.

Row 3: Ch 1, 2 sc in first sc, sc in each sc across to last sc, 2 sc in last sc, turn. (28 [30, 30, 32] sc)

Rows 4-21 [4-21, 4-23, 4-23]: [(Rep row 2), 5 [5, 3, 3] times, rep row 3] 3 [3, 5, 5] times. (34 [36, 40, 42] sc)

Rows 22-33 [22-33, 24-35, 24-35]: Rep row 2.

CAP SHAPING

Row 1: Sl st in each of next 4 [5, 5, 6] sc, ch 1, sc in same sc as last sl st, sc in each sc across to last 3 [4, 4, 5] sc, turn. (28 [28, 32, 32] sc)

Row 2: Ch 1, sc in first sc, sc dec in next 2 sc, sc in each sc across to last 3 sc, sc dec in next 2 sc, sc in last sc, turn. (26 [26, 30, 30] sc)

Row 3: Ch 1, sc in each st across, turn.

Rows 4-9 [4-7, 4-7, 4 & 5]: Rep rows 2 and 3. (20 [22, 26, 28] sc)

Rows 10 [8-10, 8-10, 6-10]: Rep row 3.

Row 11: Sl st in next 3 sts, ch 1, sc in same st as last sl st, sc across to last 2 sts, turn. (16 [18, 22, 24] sc)

Rows 12 & 13: Rep row 11. At the end of last rep, fasten off. (8 [10, 14, 16] sc)

ASSEMBLY

Sew shoulder seams, Sleeves into arm openings, side and Sleeve seams.

BOLERO EDGING

Rnd 1 (RS): With size G hook, attach yarn at side seam, ch 1, sc evenly sp around outer edge of piece, join in beg sc, fasten off.

SLEEVE EDGING

Make 2.

Rnd 1: With size G hook, attach yarn at Sleeve seam, ch 1, sc evenly sp around outer edge, join in beg sc, fasten off.

BUTTON LOOP

Sew button on left front just below beg of Neck Shaping. Using size G hook, attach yarn to right front just below beg of Neck Shaping, ch 8, sl st in same st as attaching, fasten off. ☞

Delicate Cobweb Runner

Continued from page 31

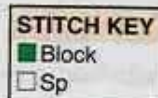
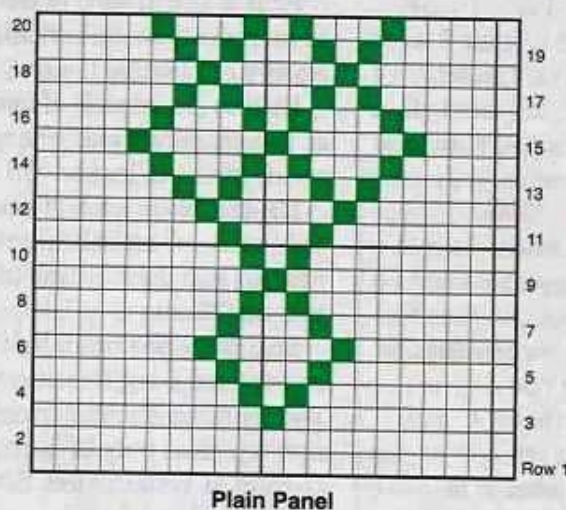
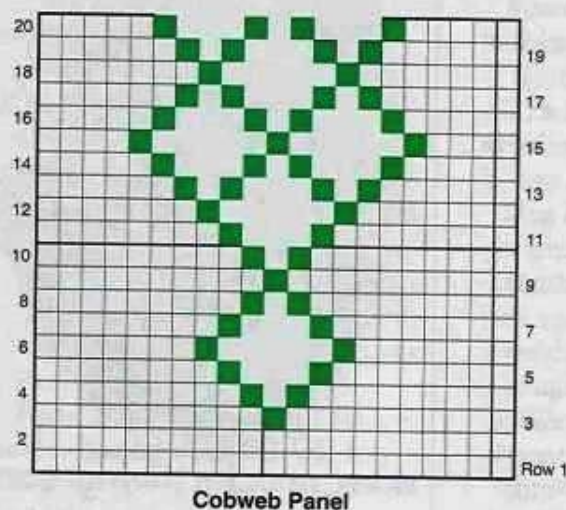
in next sp] around to corner sc of long edge, to join Plain Panel to Cobweb Panel, working in same corner sp as last sc, 2 dc, ch 1, sl st in

adjacent ch-3 sp of shell on Cobweb Panel, ch 1, 2 dc in same sp as previous 2-dc, [sc in next sp, 2 dc in next sp, ch 1, sl st in adjacent ch-3 sp of shell on Cobweb Panel, ch 1, 2 dc in same sp as previous 2-dc] across long edge (60 shells joined), rep from * around, ending with shell in same

sp as beg sc, shell, join in beg sc, fasten off.

Rep rnd 1 of Plain Panel Edging on 2nd Plain Panel, joining to opposite long edge of Cobweb Panel.

Press runner and block to size. ☞



Baby Girl Set

Continued from page 18

First Short Side

Row 1 (RS): Working in front lps only of rnd 25, ch 1, sc in each of next 24 sts, turn. (24 sc)

Rows 2-20: Ch 1, sc in each sc across, turn. At the end of row 20, fasten off.

First Long Side

Row 1 (RS): Working in front lps only, sk next st of rnd 25 of Inner Bottom Edging, attach petal pink in next st, ch 1, sc in same st as beg ch-1, sc in each of next 51 sts, turn. (52 sc)

Rows 2-20: Ch 1, sc in each sc across, turn. At the end of row 20, fasten off.

2nd Short Side

Row 1 (RS): Working in front lps only, sk next st of rnd 25 of Inner Bottom Edging, attach petal pink in next st, ch 1, sc in same st as beg ch-1, sc in each of next 23 sts, turn. (24 sc)

Rows 2-20: Ch 1, sc in each sc across, turn. At the end of row 20, fasten off.

2nd Long Side

Rows 1-20: Rep rows 1-20 of First Long Side.

Assembly

With tapestry needle, whipstitch corners tog to form a box, using care to match sc sts.

Joining

Matching shape, insert inner section into outer section.

Rnd 1 (RS): Working through both thicknesses, attach white in any st of top opening and using care to match sts and corners, ch 1, sc in same st as beg ch-1, sc in each st around, join in beg sc.

Rnd 2 (RS): Ch 1, (sc, ch 3, sc) in same sc as beg ch-1, sk next sc, [(sc, ch 3, sc) in next sc, sk next sc] around, join in beg sc, fasten off.

HANDLES

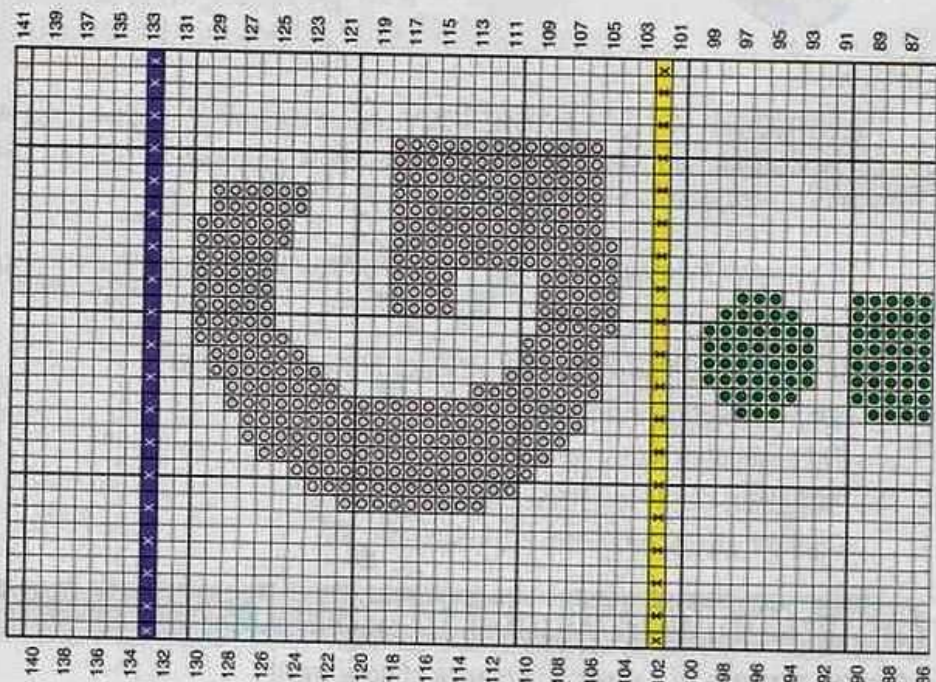
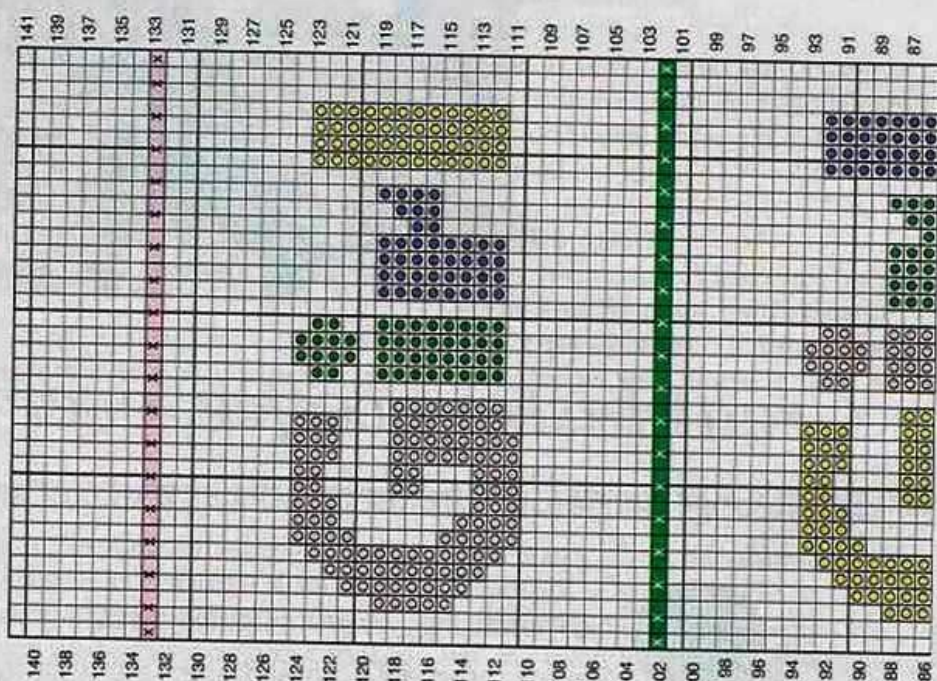
Make 2.

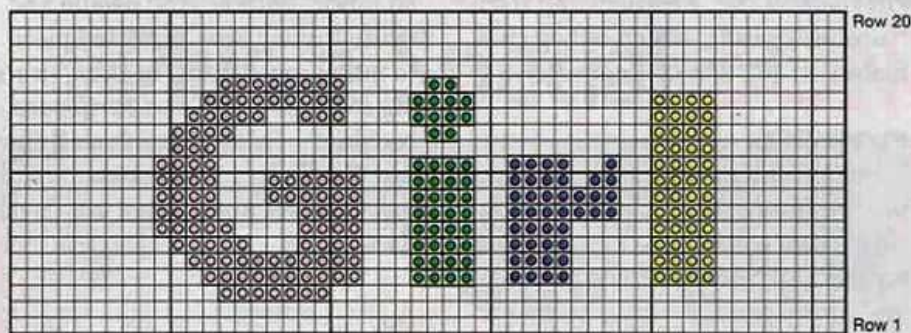
Row 1: With size G hook and petal pink, ch 24, dc in 5th ch from hook, dc in 4th st from hook, cross-st 9 times across ch, dc in last ch, fasten off. (1 dc, 10 cross-sts, 1 dc)

Rnd 2: Now working in rnds, attach white in any st, ch 1, (sc, ch 3, sc) in same st as beg ch-1, sk next

st, [(sc, ch 3, sc) in next st, sk next st] around outer edge of handle, join in beg sc, leaving a length of yarn, fasten off.

Fold Handle in half, sew end of Handle to rnd 1 of Joining on outer edge and opposite end of Handle to rnd 1 of Joining on inner edge. Sew rem Handle on opposite short end of Basket. ✕

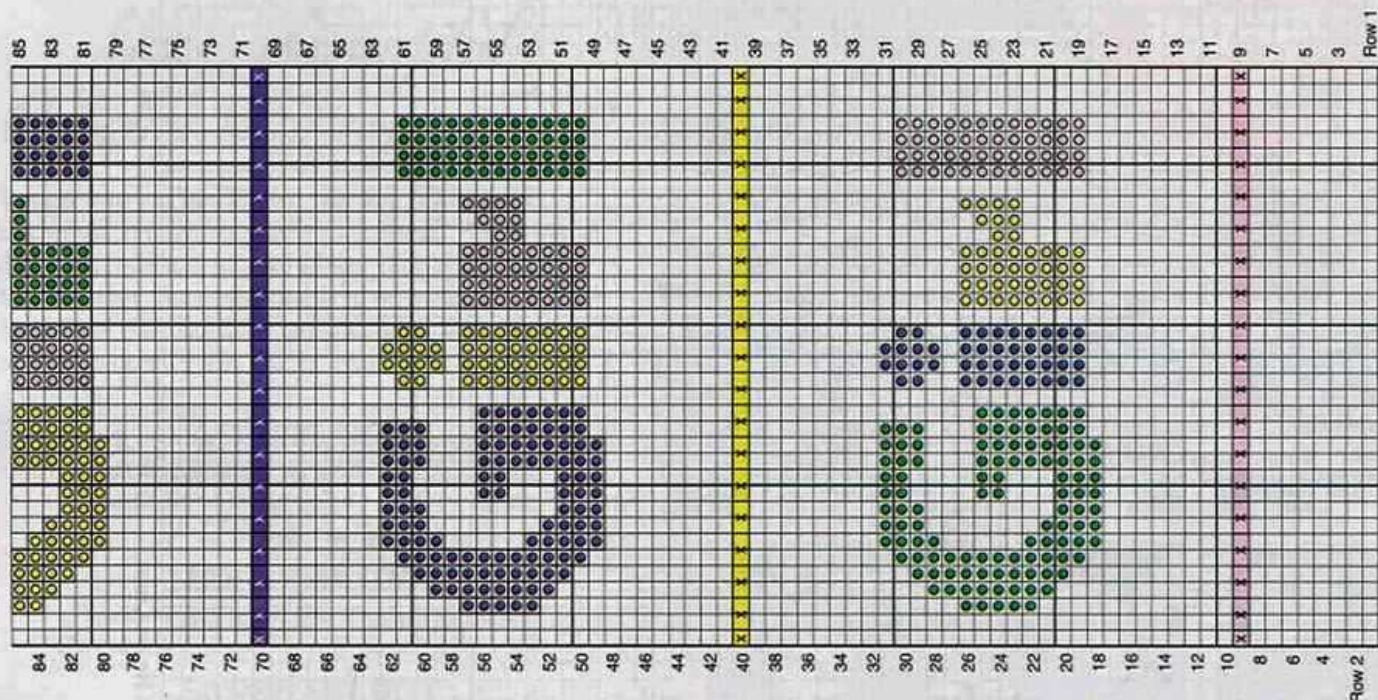




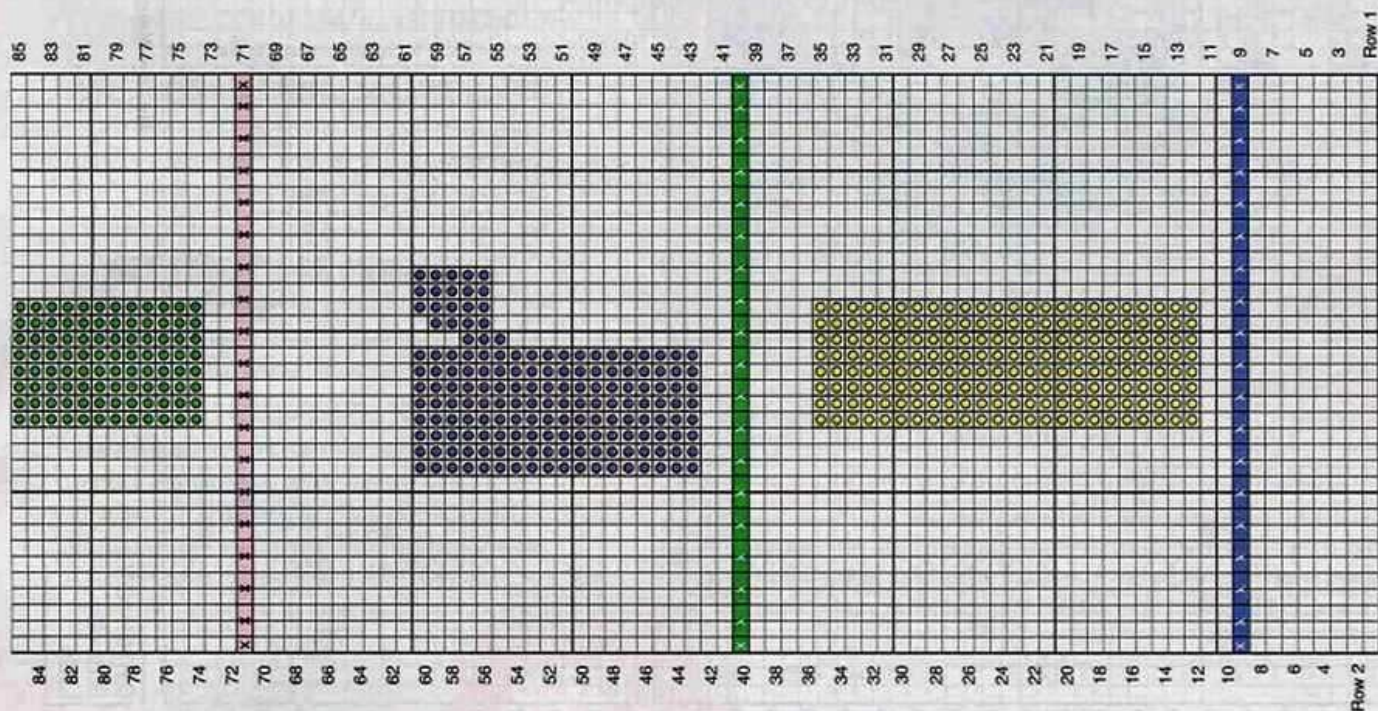
COLOR & STITCH KEY

- White
- Petal pink
- Pale green
- Pale plum
- Pale yellow
- Cross-st (color varies)

Outer Basket Chart



Side Panel Chart



Center Panel Chart

Hearty Welcome Home Wall Hanging

Continued from page 29

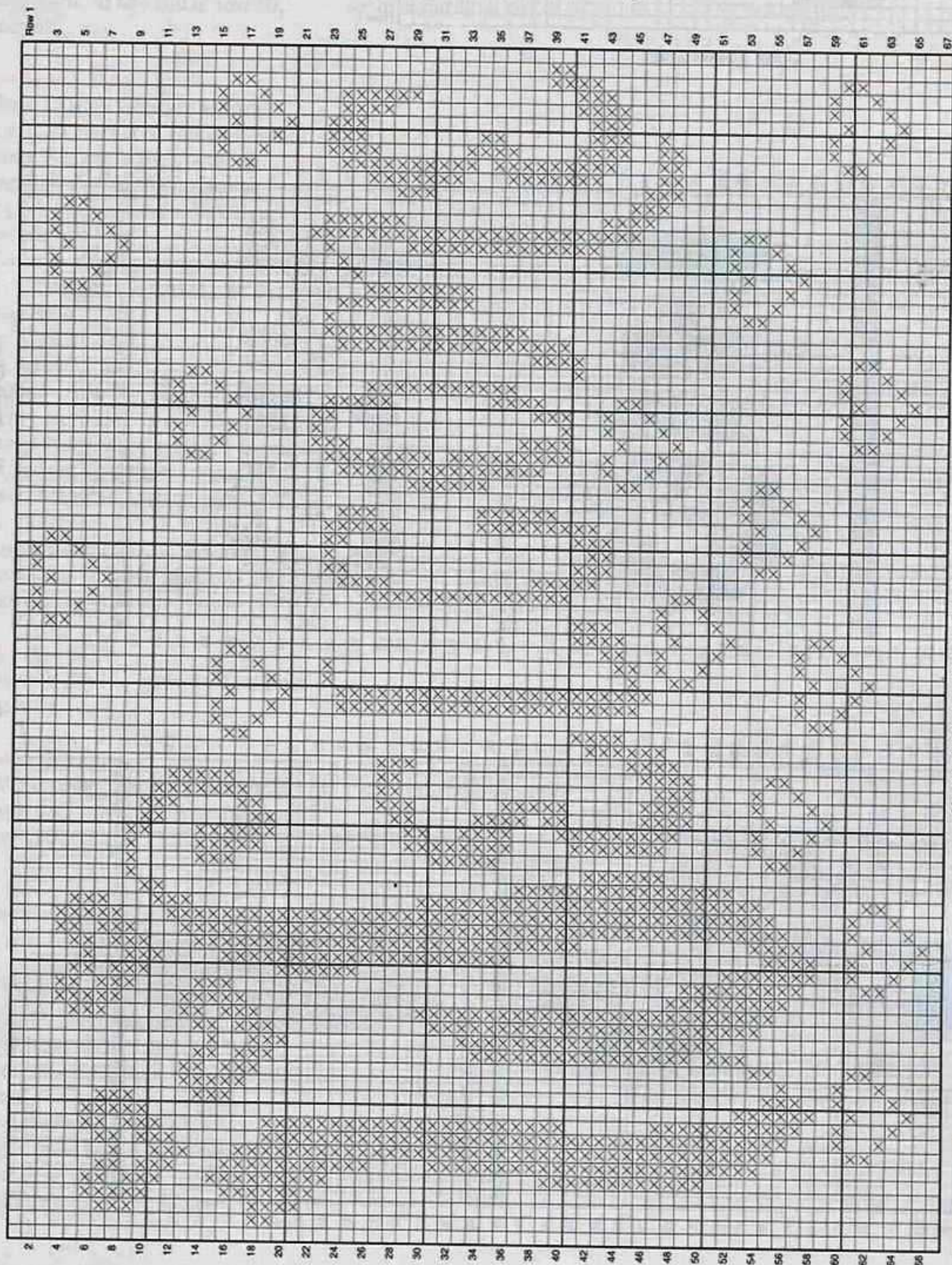
side edge, [ch 2, sk 1 sp, sc in next sp, ch 2, shell in next sp] 17 times, ch 2, sc in next sp, ch 2, do not sk a sp, (5 tr, ch 3, 5 tr) in corner sp

(16 shells, 17 sc, 1 corner), rep from * around, join in 4th ch of beg ch-4, fasten off. (72 shells, 4 corners)

FINISHING

Block crocheted piece to size. Take picture frame apart and glue red fabric to cardboard frame backing. Center and pin blocked crocheted piece

on fabric. With sewing needle and white thread, sew crocheted piece to fabric cover frame backing (*working through fabric and cardboard backing*), sewing through ch-3 sps of rnd 1 of Edging. Glue poster board to back of cardboard and put frame back tog. ☞



Hearty Welcome Home Chart

STITCH KEY
 X Block
 □ Sp

Spiderweb Poncho

Design by Dorothy Adams

SKILL LEVEL

■■■■■ INTERMEDIATE

FINISHED SIZE

1 size fits most

MATERIALS

- Medium (worsted) weight yarn:
24 oz blue
- Size H/8/5mm crochet hook or size needed to obtain gauge
- Tapestry needle

GAUGE

(Dc, ch 1) = ½ inch; spiderweb pattern = 2¾ inches wide; 1 panel = 12 x 24 inches

PATTERN NOTES

Weave in loose ends as work progresses.

Join rounds with a slip stitch unless otherwise stated.

Poncho can be made larger or smaller by adding or subtracting last rnds on neckline trim and bottom edging before attaching fringe.

PONCHO

Make 2.

Row 1: Ch 114 loosely, dc in 6th ch from hook, [ch 1, sk 1 ch, dc in next ch] 54 times, turn. (56 dc)

Row 2: Ch 4 (counts as first dc, ch 1), dc in next dc of previous row, [ch 3, tr in each of next 4 dc, ch 3, dc in next dc, ch 1, dc in next dc] 9 times, turn.

Row 3: Ch 4, dc in next dc, [ch 3, sc in each of next 4 tr, ch 3, dc in next dc, ch 1, dc in next dc] across, turn.

Row 4: Ch 4, dc in next dc, [ch 3, sc in each of next 4 sc, ch 3, dc in next dc, ch 1, dc in next dc] across, turn.

Row 5: Rep row 4.

Row 6: Ch 4, dc in next dc, *[ch 1, tr in next sc] 4 times, [ch 1, dc in next dc] twice, rep from * across, turn.

Row 7: Ch 4, dc in next dc, *[ch 1, dc in next tr] 4 times, [ch 1, dc in next dc] twice, rep from * across, turn.

Rows 8–25: Rep rows 2–7. At the end of row 25, fasten off.

Assembly

Matching the pattern, sew short end of first rectangle to the long side of 2nd rectangle, then sew short edge of 2nd rectangle to long side of first rectangle.

Bottom Edging

Rnd 1: Attach yarn in any dc on bottom edge, ch 4, dc in next dc, ch 1, [dc in next dc, ch 1] around bottom edge, working [dc, ch 1] 3 times in each corner point, join in 3rd ch of beg ch-4.

Rnds 2–4: Ch 4, dc in next dc, ch 1, [dc in next dc, ch 1] around, working [dc, ch 1] 3 times in each center dc of each corner point, join in 3rd ch of beg ch-4. At the end of rnd 4, fasten off.

Neckline Trim

Rnd 1: Attach yarn in any dc at neckline, ch 4, dc in next dc, ch 1, [dc in next dc, ch 1] around, working at each V of neckline **dc dec** (see *Stitch Guide*) in 2 dc at V of neckline, join in 3rd ch of beg ch-4.

Rnd 2–4: Ch 4, dc in next dc, ch 1, [dc in next dc, ch 1] around, working dc dec in dc before and after dc dec of previous rnd, join in 3rd ch of beg ch-4.

Rnd 5: Ch 1, sc in each dc and each ch-1 sp around, sk dc st at center of V of neck shaping, join in beg sc.

Rnd 6 & 7: Ch 1, sc in each sc around, **sc dec** (see *Stitch Guide*) in

2 center sc sts at V of neck shaping, join in beg sc. At the end of rnd 7, fasten off.

Fringe

For Fringe, cut yarn in 12-inch lengths. [Fold 3 strands of yarn in half, insert hook in ch-1 sp at bottom edge, draw strands through at fold to form a lp on hook, draw cut ends through lp on hook, pull gently to secure strands] in each ch-1 sp around bottom edge of Poncho. ☞



Moody Blues Poncho

Design by Louise Puchaty

SKILL LEVEL

■ □ □ □ BEGINNER

FINISHED SIZE

1 size fits most

MATERIALS

- Bernat Soft Bouclé bulky (chunky) weight yarn (5 oz/255 yds/140g per skein):
4 skeins #22931 blue shades
1 skein #26953 soft blue shades
- Size K/10½/6.5mm crochet hook or size needed to obtain gauge
- Yarn needle
- Straight pins
- Stitch markers

GAUGE

4 sc = 2 inches; 4 sc rows = 2 inches

PATTERN NOTES

Weave in loose ends as work progresses.

Join rounds with a slip stitch unless otherwise stated.

PONCHO

Make 2.

Row 1: With blue shades, ch 74, sc in 2nd ch from hook, [ch 1, sk next ch, sc in next ch] across, turn. (37 sc, 36 ch-1 sps)

Row 2: Ch 1, sc in first sc, [ch 1, sk next ch-1 sp, sc in next sc] across, turn.

Rep row 2 until Poncho measures 31 inches from beg, fasten off.

Joining

Using Poncho diagram as a guide, place pieces tog so that the last row (top) of 1 piece aligns with the bottom side edge of the other piece, leaving 10 inches free at the top edge, sew seam closed.

Fold pieces to align opposite top edge to opposite bottom side and sew

2nd seam, leaving V-neck opening at the top edge. Place a st marker at each center front and back V-neck opening.

Neckline

Rnd 1: Attach blue shades at shoulder, ch 1, sc in same st as beg ch-1, work 11 sc evenly sp to next marker, sk st marker, work 12 sc evenly sp to next shoulder, work 12 sc evenly sp to next marker, sk st marker, work 12 sc evenly sp to beg sc, join in beg sc, fasten off. (48 sc)

Rnd 2: Attach soft blue shades in first sc of previous rnd with a sl st, sl st loosely in each sc around, place a st marker at the beg of rnd.

Rnd 3: Working in back lp (see *Stitch Guide*) of each st around, [sc in each sc to within 1 st of center st marker, **sc dec** (see *Stitch Guide*) in next 3 sts, move st marker to keep at center] twice, sc in each rem sc. (44 sc)

Rnds 4-7: Sc in each sc around, working 1 hdc in each center front and back st markers. At the end of rnd 7, turn.

Rnd 8: Ch 2 (counts as first hdc), hdc in same st as beg ch-2, hdc in each of next 3 sc, [2 hdc in next sc, hdc in each of next 3 sc] around, join in 2nd ch of beg ch-2. (55 hdc)

Rnd 9: Ch 2, fpdc (see *Stitch Guide*) around post of each of next 3 hdc, [bpdc (see *Stitch Guide*) around post of next 2 hdc, fpdc around post of next 3 hdc] around, ending with bpdc around post of last

hdc, join in 2nd ch of beg ch-2.

Rnd 10: Ch 2, [fpdc around post of next 3 fpdc, bpdc around post of next 2 bpdc] around, ending with bpdc around post of last bpdc, join in 2nd ch of beg ch-2.

Rnd 11: Rep rnd 10, fasten off. Fold Neckline over at rnd 7.

Bottom Trim

Rnd 1: Attach blue shades in any st on lower edge, ch 1, sc evenly sp around, working 3 sc in each corner, join in beg sc, fasten off.

Rnd 2: Working in back lps only, attach soft blue shades, ch 1, sc in



same st as beg ch-1, sc in each st around, working 3 sc in each center corner sc, join in beg sc.

Rnd 3: Ch 1, sc in each sc around, working 3 sc in each center corner sc, join in beg sc, fasten off.

Left Pocket

Row 1: With blue shades, ch 19, sc in 2nd ch from hook, sc in each rem ch across, turn. (18 sc)

Rows 2-14: Ch 1, sc in each sc across, turn.

Row 15: Sl st in each of next 5 sc, sc in each of next 13 sc, turn. (13 sc)

Row 16: Ch 1, sc in each sc

across, turn.

Row 17: Ch 1, sc dec in next 2 sc, sc in each rem sc across, turn. (12 sc)

Row 18: Ch 1, sc in each sc across to last 2 sc, sc dec in next 2 sc, turn. (11 sc)

Rows 19-24: Rep rows 17 and 18. (5 sc)

Rows 25-28: Rep row 16. At the end of row 28, fasten off.

Pocket Edging

Row 1: Working across curve of Pocket opening (*dec edge*), attach soft blue shades, ch 1, work 22 sc evenly sp across edge, turn. (22 sc)

Rows 2 & 3: Ch 1, sc in each sc across, turn. At the end of row 3, fasten off.

Right Pocket

Rows 1-14: Rep rows 1-14 of Left Pocket.

Row 15: Ch 1, sc in each of next 13 sc, turn. (13 sc)

Row 16: Ch 1, sc in each sc across, turn.

Row 17: Ch 1, sc in each sc across to last 2 sc, sc dec in next 2 sc, turn. (12 sc)

Row 18: Ch 1, sc dec in next 2 sc, sc in each rem sc across, turn. (11 sc)

Rows 19-24: Rep rows 17 and 18. (5 sc)

Rows 25-28: Rep row 16. At the end of row 28, fasten off.

Pocket Edging

Rep rows 1-3 of Pocket Edging of Left Pocket.

FINISHING

Pin Pockets in place, positioning the bottom edge of each Pocket 12 inches up on either side of front point and lower outer corner of Pocket 1½ inches in from side edge. Sew Pocket in place. Fold Pocket Edging downward onto Pocket and sew edge in place. ☞

PATTERN OF THE MONTH CONTEST

Send your ideas to:

Crochet World
Pattern of the Month
6 Pearl St.
P.O. Box 776
Henniker, NH 03242-0776



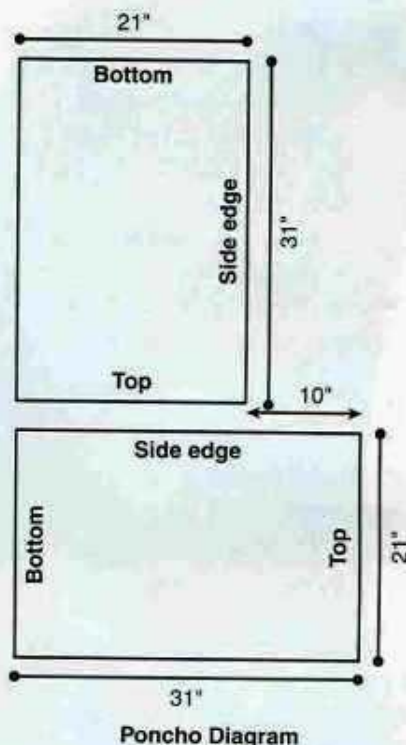
We know many talented readers enjoy designing their own patterns, from tablecloths to toys. Why not let others enjoy your pattern and earn a little cash in the process? We'll pay top dollar for your original crochet patterns, and from those submitted, we'll chose the Crochet Pattern of the Month.

Please send us the actual crocheted item(s), which will be photographed and returned to you. (Include return postage for the return of the item.)

Please e-mail (editor@crochet-world.com) or write for Designer's Guidelines, which provide necessary information when submitting designs.

All patterns submitted must be your own original design and not a copy of another designer's pattern or copyrighted figures (Disney or Sesame Street characters, etc.).

Best wishes to all of you in this competition. We're looking forward to seeing your original ideas. Send for your Designer's Guidelines today!



Poncho Diagram

Center Front & Back
Neckline

HINT!

CROSS-EYED OVER SYMBOLS?

When you are working on a project from a chart that uses symbols for each different color of thread or yarn, here's an idea that will make your project more fun.

Mark the symbol for the color right on each package of your yarn or thread before you begin your project. Just draw it on the label freehand, with a bold pen or marker. Then, when you're ready to

pick up the "+" or "#" or "@" color, you don't have to refer back to the instructions to see what color that symbol represents. You just look in your yarn basket for the package that has the matching symbol. No more cross-eyes or mistaking navy blue for midnight blue in the middle of your project!

Kathi Purnell
Horseshoe Bend, Ark.

Rose Garden Poncho

Continued from page 7

PONCHO

Rnd 1: With size I hook, leaving approximately 3 yds of pink at beg, ch 68, using care not to twist ch, sl st to join in first ch, (ch 3, dc, ch 2, 2 dc) in same ch sp, dc in each of next 33 chs, (2 dc, ch 2, 2 dc) in next ch, dc in each of next 33 chs, sl st to join in 3rd ch of beg ch-3. (74 dc, 2 ch-2 sps)

Rnd 2: Sl st into next ch-2 sp, (ch 3, dc, ch 2, 2 dc) in same ch-2 sp, [dc between each of next 2 dc] rep to next ch-2 sp, (2 dc, ch 2, 2 dc) in next ch-2 sp, [dc between each of next 2 dc] rep around, join in 3rd ch of beg ch-3. (80 dc, 2 ch-2 sps)

Rnds 3-28: Rep rnd 2. At the end of rnd 28, do not fasten off. (236 dc, 2 ch-2 sps)

Attaching Roses

For first half of attaching Roses, turn Poncho so that WS is facing, center the Rose motif at the ch-2 point of Poncho where rnd 28 ended, holding RS tog (*Rose motif and Poncho*), sl st in the center st of 1 side of Rose motif (*sl st is only in the Rose motif*), sl st in the ch-2 sp on Poncho as well as the next ch lp of Leaf, [sl st in next dc of Poncho and next ch

lp of Leaf] 5 times, *sl st in next dc of Poncho as well as first st of next Rose motif, [sl st in next dc of Poncho and next st of Leaf] 5 times, sk next st of Leaf, [sl st in next dc of Poncho and next ch lp of Leaf] 6 times, rep from * 8 times**. Sl st in next dc of Poncho and first st of next Rose motif, [sl st in next dc of Poncho and next st of Leaf] 4 times, sl st in next ch-2 sp of Poncho and next st of Leaf, sk next st of Leaf, sl st in ch-2 sp of Poncho and next ch lp of Leaf, [sl st in next dc of Poncho and next ch lp of Leaf] 5 times. Rep from *, ending last rep at **, now attaching the rem half of first Rose motif, pull 2nd half of first motif around and sl st in next dc of Poncho and next ch lp of Rose motif, [sl st in next dc of Poncho and next ch lp] 4 times, sl st in next ch-2 sp of Poncho and last ch lp of motif.

For 2nd half of attaching Roses, draw lp on hook to front of Poncho through ch-2 sp (*hook and sl st will be on RS and yarn is on WS*), sl st close to Rose motif in top of each dc and each ch-2 sp around poncho edge creating a neatly finished sl st edging, fasten off.

Neckline Trim

Rnd 1 (RS): With size J hook, working in opposite side of foundation ch, insert hook in ch,



draw up a lp from rem beg length, sl st in each ch around, fasten off.

PIN

Sew pin back to center back of rem yellow Rose. Attach Pin over rnds 7 and 8 of Poncho on left front. ❧

Patriotic Cup Cozies

Continued from page 8

around, ending last rep at **, join in 3rd ch of beg ch-3. (4 [5] shells, 4 [5] 2-dc groups)

Rnd 6: Rep rnd 4. (12 [15] ch sps)

Rnd 7: Sl st into next ch sp, ch 3, dc in same ch sp, ch 1, *2 dc in next ch sp, ch 1, rep from * around, join in 3rd ch of beg ch-3. (24 [30] dc, 12 [15] ch-1 sps)

Rnd 8: Sl st into ch-1 sp, ch 1, **bead sc** (*see Special Stitches*) in same ch-1 sp, ch 3, *bead sc in next ch-1 sp, ch 3, rep from * around, join in beg bead sc, fasten off, turn. (12 [15] bead sc)

Rnd 9: Attach red in first ch-3 sp of previous rnd, ch 3, dc in same sp, ch 1, *2 dc in next ch-3 sp, ch 1, rep from * around, join in 3rd ch of beg ch-3, fasten off.

Rnd 10: Draw up a lp of white in same dc as joining, sl st in next dc, ch 3, dc behind ch-3 into previous dc, ch 1, *dc in 2nd dc of next 2-dc group, working behind dc just made, dc in first dc of same 2-dc group, ch 1, rep from * around, join in 3rd ch of beg ch-3, fasten off.

Rnd 11: Draw up a lp of red in same st as joining, ch 3, dc in next dc, ch 1, *dc in each of next 2 dc, ch 1, rep from * around, join in 3rd ch of beg ch-3, fasten off.

Rnd 12: Attach blue in first ch-1

sp of previous rnd, ch 1, bead sc in same ch-1 sp, ch 3, *bead sc in next ch-1 sp, ch 3, rep from * around, join in beg bead sc.

Rnd 13: Sl st into ch-3 sp, ch 3, dc in same ch sp, ch 1, *2 dc in next ch-3 sp, ch 1, rep from * around, join in 3rd ch of beg ch-3.

Rnd 14: Sl st into ch sp, ch 1, sc in same ch sp, ch 3, *sc in next ch sp, ch 3, rep from * around, join in beg sc.

Rnd 15: Rep rnd 7.

Rnd 16: Rep rnd 8, do not fasten off blue.

Rnd 17: Rep rnd 7.

Rnd 18: Sl st into next ch sp, ch 1, (sc, ch 3, sc) in same ch sp, ch 1, *(sc, ch 3, sc) in next ch sp, ch 1, rep from * around, join in beg sc, fasten off. ❧