

Sharing the Art and Soul of

# Crochet!

Crochetmagazine.com

SEPTEMBER 2004

Back-to-School

## CONFETTI TOGGLE JACKET

A Pet's Yarn

## CROCHETED DOG HAIR TAM

Sumptuous & Stylish

## PURPLE FANTASY CARDIGAN

College Craze

## CROCHET ON CAMPUS



\$4.95 USA/\$5.95 CANADA





Luxurious Modal-Irm Jacket • Campus Carry-Alls • Cozy Autumn Afghanis

# Crochet!

Sharing the Art and Soul of

Crochetmagazine.com  
SEPTEMBER 2004

Back-to-School  
**CONFETTI  
TOGGLE  
JACKET**

A Pet's Yarn  
**CROCHETED  
DOG HAIR TAM**

Sumptuous & Stylish  
**PURPLE FANTASY  
CARDIGAN**

College Craze  
**CROCHET  
ON CAMPUS**

#301119001289#  
EXPIRES: J/J 2006 ISSUE  
Ninon Anderson  
27 Susan Court  
Truro NS B2N 5S8

\$4.95 USA/\$5.95 CANADA





## PROJECTS

### 9 Hidden Treasures Scarf

This charming blue and white scarf features secret pockets and a textured star-stitch pattern.

### 10 Purple Fantasy Cardigan

You'll be the center of attention in this eye-catching sweater worked in beautiful novelty yarns.

### 12 Smoke & Mirrors Afghan

Snuggle into this soft, cozy afghan that's reminiscent of smoke floating on an autumn breeze.

### 14 Trendy Tweed Tote

Beautiful and sturdy, this plush tote offers a spacious interior to accommodate all of your carry-along needs.

### 18 Dog Hair Tam

You'll be "doggone" stylish in our unique hat made from pet hair spun into yarn.

### 20 Plum Lace Cardigan

Accentuate your wardrobe with this gorgeous sweater featuring dainty openwork trim.

### 22 Cotton Candy Ripple Blanket

Luscious candy colors and soft baby yarn make this snuggly blanket a delight to crochet.

### 27 Indian Summer Wrap

Chase away the autumn chill with our dazzling lightweight stole.



### 28 Confetti Toggle Jacket

Your little girl will love wearing this delightful jacket worked in bright colors and fun yarns.

### 30 Mohair-Trim Jacket

You'll look spectacular in our lavishly textured and lusciously soft diamond-pattern jacket.

### 33 Berry Bobbles Backpack

Our handy, compact backpack is just the right size to carry all of your basic necessities.

### 34 Go Anywhere Tie

Create an aura of playful sophistication with this easy-to-make tie worked with eyelash yarn and a large hook.

### 35 Precious Preemie Blanket

Welcome a tiny new treasure into your family with this charming striped blanket.

### 36 A Walk in the Woods Afghan

Wrap up in this handsome afghan stitched in the soft, warm colors of an autumn forest.

### 38 Birthday Flowers

Dress up any outfit with our floral pins featuring vibrant poppies and delightful morning glories.

## OF SPECIAL INTEREST

### 16 Putting on the Dog

### 24 College Craze: Crochet on Campus

## DEPARTMENTS

3 A Note From the Editor

6 Letters From Our Readers

7 Crochet in the News

8 The Bookshelf

41 Stitch Guide

58 Hooks & Humor

58 Previews

FOR SUBSCRIPTION SERVICE, including change of address, visit online at [www.Crochetmagazine.com](http://www.Crochetmagazine.com) (select Subscriptions). Or write to Crochet! Customer Service, 23 Old Pecan Road, Big Sandy, TX 75755. Please enclose your label from a recent issue. If you wish to phone, call (800) 449-0440 or (903) 636-4011 weekdays between 8 a.m. and 5 p.m. CST. Send faxes to (800) 882-6643. Or, send an e-mail to [Customer\\_Service@Crochetmagazine.com](mailto:Customer_Service@Crochetmagazine.com).



# Crochet IN THE NEWS

BY BRENDA STRATTON



## Meno Trigger Grip Handle

Born of a vision by creator Peggy Mineau, the Meno Trigger Grip handle is a revolutionary new aid which offers a unique alternative to conventional crochet hooks. Lightweight and comfortable to use, its ergonomic design is specially crafted to ease stress on fingers, hands and wrists, helping to extend crochet time. The solid wood handle features four grip options and works equally well for left- or right-handed people.

Customized with Wright brand crochet hooks, the Meno Trigger Grip is available in sizes 1mm through 6mm and can be used for both crochet and rug hooking.

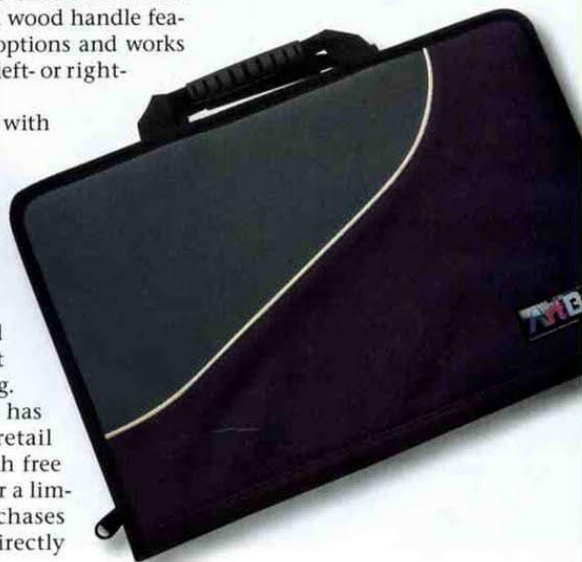
The handle has a suggested retail price of \$30 with free U.S. shipping for a limited time. Purchases can be made directly

from the manufacturer online at [www.menotriggergrip.com](http://www.menotriggergrip.com), by calling (920) 826-2880 or through e-mail at [meno@new.rr.com](mailto:meno@new.rr.com). Quantity discounts are available to teachers and retailers upon request.

## ArtBin® Needlework Folio

Finally, the answer to needlework project organization is here! ArtBin® introduces The Needlework Folio (model 8416SA), a soft-sided organizer for all your needlework projects. The zipper-enclosed organizer has sturdy nylon webbed handles double-stitched into each side of the folio. When closed, the dimensions are 15¼ x 10½ x 1½ inches, making it perfect for storing instruction books and needlework tools for crocheting, knitting and cross-stitch.

The suggested retail price for the Needlework Folio is \$21.99 and may be ordered by calling (440) 632-1631. For more information, contact ArtBin® at [info@nordicgroup.com](mailto:info@nordicgroup.com).



## How to Contact Us

For assistance concerning your subscription or any other questions, our Customer Service representatives are ready to assist you by whichever means is most convenient for you.

For online subscription assistance, go to [www.Crochetmagazine.com](http://www.Crochetmagazine.com)

Select Subscriptions to:

- Subscribe
- Renew your subscription
- Pay your bill
- Check your account status (expiration and latest payment)
- Change your address or e-mail address
- Report a duplicate issue
- Report a missing or damaged issue

### Mail subscription questions to:

Crochet! magazine  
23 Old Pecan Road  
Big Sandy, TX 75755

### Send e-mail to:

[Customer\\_Service@Crochetmagazine.com](mailto:Customer_Service@Crochetmagazine.com)

### Call us weekdays

8 a.m. to 5 p.m. CST

Please have your address label or billing invoice handy. (800) 449-0440 or (903) 636-4011

### Fax subscription questions to:

(800) 882-6643

### For Pattern Services:

**Write:** Crochet Pattern Services

306 East Parr Road, Berne, IN 46711

**E-mail:** [Editor@Crochetmagazine.com](mailto:Editor@Crochetmagazine.com)

**Call:** (260) 589-4000, ext. 333 weekdays

### The Crochet! guarantee

If, for any reason, you're not completely satisfied with Crochet! magazine, you can cancel your subscription and receive a full and immediate refund of the entire subscription price. No questions asked.

### MAILING LISTS:

From time to time we make our subscriber list available to companies that sell goods and services by mail that we believe would interest our readers. If you would rather not receive such mailings, please send your current mailing label or exact copy to Crochet! magazine, Mail Preference Service, 23 Old Pecan Road, Big Sandy, TX 75755.



# Hidden Treasures Scarf

DESIGN BY BRENDA STRATTON

This pretty bead-trimmed scarf features a pair of concealed pockets perfect for warming chilled fingers or tucking away small essentials such as cell phones or lunch money.

## SKILL LEVEL



INTERMEDIATE

## FINISHED SIZE

60 x 5½ inches

## MATERIALS

- Red Heart Hokey Pokey medium (worsted) weight acrylic yarn (4 oz/113g per skein):  
2 skeins #7111 blue bonnet (MC)
- Red Heart TLC medium (worsted) weight acrylic yarn (5 oz/140g per skein):  
1 skein #500 white (CC)
- Sizes G/6/4mm and I/9/5.5mm crochet hooks or size needed to obtain gauge
- 2 pink star flower beads
- 2 green pearl star flower beads
- 2 white 6mm pearls
- White sewing thread
- Sewing needle
- Straight pins

## GAUGE

With **I hook**, working in pattern: 2 star sts = 1 inch; 2 star st rows = 1 inch



*Continued on page 40*



# Purple Fantasy Cardigan

DESIGN BY BELINDA "BENDY" CARTER

Accented with glitzy cord laces on the front and sleeve openings, this ultra-chic, full-length sweater will add drama and interest to any wardrobe from funky to formal.

## SKILL LEVEL



INTERMEDIATE

## FINISHED SIZES

Instructions given fit size 30-inch to 32-inch bust (*small*); changes for 34-inch to 36-inch (*medium*), 38-inch to 40-inch (*large*) and 44-inch to 46-inch (*X-large*) are in [ ].

## FINISHED GARMENT MEASUREMENT

36 inches (*small*), 40 inches (*medium*), 44 inches (*large*) and 48 inches (*X-large*)

## MATERIALS

- Berroco Optik or medium (worsted) weight cotton/acrylic/mohair/metallic/polyester novelty yarn (1.75 oz/87 yds/50g per skein):  
12 [13, 15, 16] skeins #4905 tiffany (A)
- Berroco Plume FX eyelash polyester yarn (.70 oz/63 yds/

20g per skein):

17 [18, 20, 22]  
skeins #6720  
purple  
finch (B)

- Size L/11/8mm crochet hook or size needed to obtain gauge
- 12 feet black craft cord

## GAUGE

6 sc = 3 inches;  
7 sc rows = 3  
inches

## PATTERN NOTE

Sweater is worked holding one strand A and one strand B together throughout.

## SWEATER BACK

**Row 1 (RS):** Ch 41 [45, 49, 53], sc in second ch from hook and in each rem ch across, turn. (40 sc)





[44 sc, 48 sc, 52 sc]

**Row 2:** Ch 1, sc in each sc across, turn.

Rep row 2 until Back measures 6 inches from beg.

**Next row (dec row):** Ch 1, sc across, working **sc dec** (see *Stitch Guide*) at beg and end of row, turn. (38 sc) [42 sc, 46 sc, 50 sc]

Rep row 2, working dec row every sixth row 3 times, then work even on 32 [36, 40, 44] sc until Back measures 16 inches from beg.

**Next row (inc row):** Ch 1, sc across, working 2 sc (sc inc) in first and last sc of row, turn. (34 sc) [38 sc, 42 sc, 46 sc]

Rep row 2 twice, then rep inc row once. Work even on 36 [40, 44, 48] sc until Back measures 22½ inches from beg.

#### Armhole Shaping

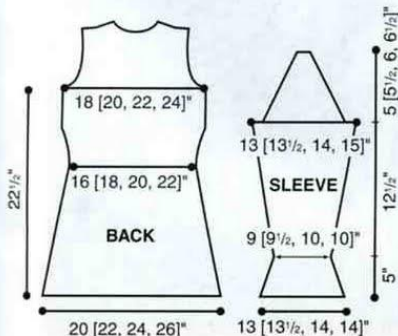
Ch 1, sl st in each of first 2 [2, 3, 3] sc, (sl st, ch 1, sc) in next sc, sc in each rem sc across to last 2 [2, 3, 3] sc, turn. (32 sc) [36 sc, 38 sc, 42 sc]

Rep row 2 until 7½ [8, 8½, 9] inches from beg of armhole shaping, at the same time work 1 sc dec at each end of every other row 2 [3, 3, 4] times. (28 sc at end of last dec row) [30 sc at end of last dec row, 32 sc at end of last dec row, 34 sc at end of last dec row]

#### Neck Shaping

##### First Side

**Row 1:** Sl st across first 3 sc, (sl st, ch 1, sc) in next sc, sc in each of next 3 [4, 4, 5] sc, turn. (4 sc) [5 sc, 5 sc, 6 sc]



**Row 2:** Ch 1, sc in each of next 2 [2, 2, 3] sc. Fasten off.

#### Second Side

**Row 1:** Sk next 14 [14, 16, 16] sc, attach yarn with a sl st in next sc, ch 1, sc in same st, sc in each of next 3 [4, 4, 5] sc, leave rem sc unworked, turn. (4 sc) [5 sc, 5 sc, 6 sc]

**Row 2:** Ch 1, sl st in each of first 2 [3, 3, 3] sc, (sl st, ch 1, sc) in next sc, sc in each of next 1 [1, 1, 2] sc. Fasten off.

#### FRONT (make 2)

**Row 1:** Ch 21 [23, 25, 27], sc in second ch from hook and in each rem ch across, turn. (20 sc) [22 sc, 24 sc, 26 sc]

**Row 2:** Ch 1, sc in each sc across, turn.

Rep row 2 until Front measures 6 inches from beg.

**Next row (dec row):** Ch 1, sc across, working sc dec in last st, turn. (19 sts) [21 sts, 23 sts, 25 sts]

Rep row 2, working dec row every sixth row 3 times, then work even on 16 [18, 20, 22] sc until Front measures 16 inches from beg.

**Next row (inc row):** Ch 1, sc across, working sc inc on same end of row as previous sc decs, turn. (17 sc) [19 sc, 21 sc, 23 sc]

Rep row 2 twice, then work sc inc on same end of next row as last sc inc worked. Work even on 18 [20, 22, 24] sc until Front measures 22½ inches from beg.

#### Armhole and Lapel Shaping

**Next row:** Ch 1, sc across, working 2 [2, 3, 3] sc dec on same edge as last sc inc (armhole edge), turn. (16 sts) [18 sts, 19 sts, 21 sts]

Continuing to work in sc, work 1 sc dec at armhole edge every other row 2 [3, 3, 4] times; at the same time, when 1 inch from beg of armhole shaping, work 1 sc inc at lapel edge on next row, then on every fourth row twice. After all inc and dec rows have been worked, work even on 17 [18, 19, 20] sc until Front is 5 rows less than Back.



#### Neck and Lapel Shaping

**Row 1:** Ch 1, sc across, working 6 [6, 7, 7] sc dec at lapel edge, turn. (11 sc) [12 sc, 12 sc, 13 sc]

**Rows 2 & 3:** Ch 1, sc across, working 2 sc dec at lapel edge on each row, turn. (7 sc at end of Row 3) [8 sc at end of Row 3, 8 sc at end of Row 3, 9 sc at end of Row 3]

**Row 4:** Ch 1, sc across, working 3 sc dec at armhole edge, turn. (4 sc) [5 sc, 5 sc, 6 sc]

**Row 5:** Ch 1, sc across, dec 2 [3, 3, 3] sc at armhole edge. Fasten off. (2 sc) [2 sc, 2 sc, 3 sc]

#### SLEEVE (make 2)

**Row 1:** Ch 19 [20, 21, 21], place marker at 10th [10th, 11th, 11th] ch, sc in second ch from hook and in each rem ch across, turn. (18 sc) [19 sc, 20 sc, 20 sc]

**Row 2:** Ch 1, sc in each sc across, turn.

Continuing to work in sc, work 1 sc inc at beg of next row 1 [1, 1, 3] times, then work 1 sc inc at beg of every third row 7 times, then work even on 26 [27, 28, 30] sc until Sleeve measures 12½ inches from beg.

#### CAP SHAPING

**Next Row:** Sl at in each of first 2 [2, 3, 3] sc, (sl st, ch 1, sc) in next sc, sc across to last 2, [2, 3, 3] sc, ch 1, turn. (22 sc) [23 sc, 22 sc, 24 sc]

Continuing to work in sc, work 1 sc dec at each end of every other row twice, work 5 [6, 7, 8] rows

*Continued on page 42*



# Smoke & Mirrors Afghan

DESIGN BY RENA V. STEVENS

You'll love the sumptuous feel and easy style of this luscious, quick-to-stitch afghan. Luxurious mohair-blend yarn and an open, airy pattern make it soft as a whisper and light as a breeze.

## SKILL LEVEL



INTERMEDIATE

## FINISHED SIZE

40 x 55 inches  
excluding fringe

## MATERIALS

- Lion Brand Jiffy or bulky (chunky) weight acrylic yarn (3 oz/135 yds/85g per skein):
  - 5 skeins #100 white (A)
  - 2 skeins each #154 oxford gray (B)
  - 2 skeins #150 pearl gray (C)
- Size P/15mm crochet hook or size needed to obtain gauge
- Tapestry needle

## GAUGE

9 sc = 5 inches





## PATTERN NOTES

Afghan is worked vertically. When joining and fastening off yarn, leave an 8-inch length to be worked into fringe.

## SPECIAL STITCHES

**Inverted V-st (inv V-st):** Holding back on hook last lp of each st, dc in same st as last half of last inv V-st made, sk next st, dc in next st, yo, draw through all 3 lps on hook.

**Beginning inverted V-st (beg inv V-st):** Holding back on hook last lp of each st, dc in fourth ch from hook, sk next ch, dc in next ch, yo, draw through all 3 lps on hook.

## AFGHAN

**Row 1:** With A, ch 106, **beg inv V-st** (see *Special Stitches*), [ch 1, **inv V-st** (see *Special Stitches*)] rep across, ending with dc in same st as last half of last inv V-st. Fasten off. Turn. (51 inv V-sts; 50 ch-1 sps; 1 dc at each end, counting last 3 chs of foundation ch as first dc)

**Row 2 (RS):** Join B with a sl st in first dc, ch 1, sc in same dc, sc in each inv V-st and in each ch-1 sp across, ending with sc in last inv V-st, sc in next ch. Fasten off. Turn. (103 sc)

**Row 3:** Working in **front lps** only this row (see *Stitch Guide*), join C with a sl st in first sc, ch 1, sc in same sc, sc in each rem sc across. Fasten off. Turn.

**Row 4:** Join A with a sl st in first sc, ch 3 (counts as first dc throughout); beg in same st as ch-3, inv V-st, [ch 1, inv V-st] rep across, ending with dc in same st as last half of last inv V-st. Fasten off. Turn. (51 inv V-sts, 50 ch-1 sps, 1 dc at each end)

**Row 5:** Join B with a sl st in first dc, ch 2 (counts as first hdc throughout), hdc in each inv V-st and in each ch-1 sp across, ending with V-st in top of first ch-3. Fasten off. Turn. (103 hdc)

**Row 6:** Working in **back lps** only this row (see *Stitch Guide*), join C with a sl st in first hdc, ch 2, hdc in each rem hdc across. Fasten off. Turn.

**Row 7:** Join A with a sl st in first

hdc, rep row 4. Do not fasten off. Turn. (51 inv V-sts, 50 ch-1 sps, 1 dc at each end)

**Row 8:** Ch 3, beg in same st as ch-3, inv V-st, [ch 1, inv V-st] rep across, ending with dc in same st as last half of last inv V-st. Fasten off. Turn.

**Row 9:** With C, rep row 5.

**Row 10:** With B, rep row 6.

**Row 11:** Rep row 7. Fasten off. Turn.

**Row 12:** With C, rep row 2, ending with sc in last inv V-st, sc in top of ch-3. Fasten off. Turn

**Row 13:** With B, rep row 3.

**Row 14:** Rep row 4. Fasten off. Do not turn.

**Row 15:** With RS facing, join B with a sl st in top of ch-3, rep row 2, ending with sc in last inv V-st, sc in last dc. Fasten off. Turn.

**Row 16:** Working in **front lps** only, rep row 4.

**Row 17:** With B, rep row 2.

**Row 18:** Working in **front lps** only, rep row 4.

**Rows 19-48:** Rep rows 2-18 once,

then rep rows 2-14. Fasten off at end of row 48.

## FINISHING

### Fringe

Fringe is worked across both short edges.

Cut 4 14-inch strands of A for each row worked in A; cut 2 14-inch strands of B and 2 14-inch strands of C for each pair of rows worked in B and C. Holding 4 strands of A tog, fold in half. With RS facing, insert hook from WS to RS over end st of any A row, \*pick up folded end of 4-strand group and draw through to WS to form lp, pull free ends through lp and tighten\*. Holding 2 strands B and 2 strands C tog, fold in half. With RS facing, insert hook from WS to RS over end of afghan at center of any pair of B and C rows, rep from \* to \*. Continue across first short edge. Rep on rem short edge. Trim ends even.♦♦

## Brenda's Justifiably Simple Heirlooms



Simple Baby  
Afghans  
10 Patterns

\$15.00

(Shipping and handling included)

For details or to view pictures  
Please visit my website at  
[WWW.BJSHinc.com](http://WWW.BJSHinc.com)  
All volumes now available!

To order, please send  
check or money order  
with name and  
address to:

BJSH, Inc.  
1280 Ray Road  
Fenton, MI 48430

Visa and Master card  
accepted



Order The Yarn Flipper  
or the Carrying Case (in Black,  
Brown, or Gray) for \$19.95 each  
or order both for \$35.95 per set.

### The Yarn Flipper is...

#### "Making Memories Easier to Make"

Complete your project faster without the hassle  
of tangled yarn. For more details and pictures  
or to order on-line, visit our web-site at

[www.rusainc.com](http://www.rusainc.com)

or call 660-668-4988 or 660-829-1595.

To order, please send check or money order  
to:

Rusa, Inc.

PO Box 1493

Sedalia, MO 65302-1493

(Visa & Mastercard also accepted)



# SKILL LEVEL



INTERMEDIATE

# FINISHED SIZE

18 x 13 inches

# MATERIALS

- Lion Brand Homespun or bulky (chunky) weight acrylic/ polyester yarn (6 oz/185 yds/ 170g per skein):  
2 skeins #338 nouveau (A)
- Lion Brand Thick and Quick or super bulky (super chunky) weight acrylic/rayon chenille yarn (100 yds per skein):  
2 skeins #189 wine (B)  
2 skeins #107 periwinkle (C)
- Size H/8/5mm crochet hook or size needed to obtain gauge
- 1½-inch to 1½-inch in diameter button
- Tapestry needle

# GAUGE

With 1 strand A and 1 strand B or 1 strand A and 1 strand C held tog: 4 sc = 1½ inches; 2 rows = 1 inch

# PATTERN NOTES

Centerpiece is worked in vertical rows from center out to each side. Tote is worked with two strands held together throughout. To change one of two colors being worked, work last stitch before color change until last two loops before final yarn over remains on hook, drop color not to be worked on wrong side, place next color over hook with other color in use, yarn over, complete stitch.

# TOTE

## CENTERPIECE

### First Half

**Row 1 (RS):** With 1 strand A and 1 strand B held tog, ch 60, sc in second ch from hook, sc in each rem ch across, turn. (59 sc)

**Row 2:** Ch 1, sc in first sc, [ch 1, sk next sc, sc in next sc] rep across, dropping B and adding C in last

# Trendy Tweed Tote

DESIGN BY KATHERINE ENG

Our roomy multipurpose tote worked in rich jewel-tone colors provides ample storage space for carry-along essentials. It's just right for everything from books to a favorite needlework project.

sc, turn.

**Row 3:** Sc in each sc and ch-1 sp across, ch 1, turn.

**Row 4:** Ch 1, sc in first sc, [ch 1, sk next sc, sc in next sc] rep across, turn.

**Rows 5-8:** Rep rows 3 and 4 twice, dropping C and adding B in last sc of row 8, turn.

**Rows 9-12:** Rep rows 3 and 4 twice with A and B, dropping B

*Continued on page 42*





# BERNAT®

## Frenzy

### Fabulous Wrap to crochet

**MEASUREMENTS:** Approx 66 ins [167 cm] wide x 37 ins [94 cm] deep.

**MATERIALS:** Bernat Frenzy (50 g/1.75 oz) (Racy Red 55530) **10 balls**

Size 10 mm (U.S. N or 15) crochet hook or size needed to obtain gauge.

#### GAUGE

2H V-sts and 4H rows = 4 ins [10 cm] in pat.

#### INSTRUCTIONS

Ch 4.

**1st row:** (RS). 1 dc in 4th ch from hook. Turn.

**2nd row:** Ch 3 (counts as dc). 2 dc in first dc. 3 dc in 3rd ch of ch 4. Turn.

**3rd row:** [Ch 4 (counts as dc and ch 1). 1 dc in first dc] - first V-cluster made. (1 dc. Ch 1. 1 dc - V-cluster made) between next two 3 dc groups. Miss next 2 dc. V-cluster in top of ch 3. Turn.

**4th row:** Ch 3 (counts as dc). 2 dc in first dc. \*3 dc between next two V-clusters. Rep from \* to last V-cluster. 3 dc in 3rd ch of ch 4. Turn.

**5th row:** [Ch 4 (counts as dc and ch 1). 1 dc in first dc] - first V-cluster made. \*V-cluster between next two 3 dc groups. Rep from \* to last 3 dc group. V-cluster in top of ch 3. Turn.

Rep last 2 rows until work from beg measures approx 66 ins [167 cm] wide, ending with RS facing for next row.

**Next row:** Ch 1. 1 sc in each st to end of row. Fasten off.



[www.bernat.com](http://www.bernat.com)

**BERNAT**

P.O. Box 40 Listowel, Ont. N4W 3H3

Crafts

Discover life's little pleasures.

[www.i-craft.com](http://www.i-craft.com)



# Putting on the Dog

BY SUE E. HOTOVEC

Create a special project from a beloved friend with your own unique blend of pet-hair yarn.



The author's current canine companion, Callisto, posing with some socks created with her hair.

It's all Max's fault. I never knew exactly what breeds he might have been but he was the world's sweetest dog. Every spring he would shed bales of the softest, downiest undercoat. I would brush him, see the cream-colored drift of fluff that resulted and think to myself, "This would make an incredible sweater. Someday, I'm going to have to learn to spin and knit so I can make a sweater out of this."

So I learned to spin yarn ... dog, sheep, cotton, milkweed, llama, hemp, etc. ... then to knit. When people hear about my hobby, it almost always generates a lot of questions.

## Why pet hair?

First, it's not practical for me to keep traditional fiber animals like sheep or llamas, but it is practical to have a dog that, in addition to loving companionship, provides me with a ready source of fiber to

spin. Second, long after my beloved friend is no longer here, I will have this pair of cozy socks or that cute, fuzzy hat as a memento.

## Doesn't it smell?

While some dogs smell more "doggy" than others, once the yarn has been washed it usually doesn't have a noticeable smell. There are exceptions, however. Someone once gave me hair from a wolf-dog hybrid that reeked. Even after multiple washings, it still smelled horrible. The yarn was gorgeous but I asked the person to please not save me any more hair.

## What kinds of pet hair can you spin?

You can spin almost any hair as long as the hairs are at least one and a half inches long. Most dogs are double-coated with stiff, coarse guard hairs outside and soft, downy undercoat next to the skin. For dogs,

a slicker brush works well to collect the undercoat without getting a lot of the guard hairs, too. Some of my favorite breeds to spin are sheltie, husky and Samoyed. You can also spin hair from breeds without a double coat, such as poodle and Afghan hound. Longhair cats work well, too.

## How do you turn the hair into yarn?

There are a number of steps involved in processing hair into yarn.

### 1. Collect the Hair

Naturally shed hair is best. Whenever I brush my dog, Callisto, I collect her hair from the brush and keep it in a grocery bag. I don't recommend using clipped hair. Hair clipped from double-coated breeds will have a lot of guard hairs in it that will have to be picked out.

Some state and federal laws prohibit processing, buying or selling



anything made from domestic cat or dog. These laws are designed to prohibit the killing of pets for their flesh or pelt. However, the wording of some laws is broad enough to include items made from shed or clipped hair. It's a good idea to check the dog and cat protection laws in your area, especially if you plan to spin pet hair for other people or commercially.



The "picking" process to clean Callisto's brushed and collected fur of debris allows her to still enjoy one of her favorite pastimes—playing in the leaves!

## 2. Pick the card

"Picking" the fiber is sorting through the hair to separate the usable from the unusable. I work with three paper grocery bags: one for the collected hair, one for the guard hairs, twigs, matted clumps, etc. that get picked out, and a third bag to hold the hair for spinning.

"Carding" uses a pair of paddles with rows of small, bent-wire teeth to comb the hair so that all the hairs run parallel to each other. Sometimes the picking process will make the hair fluffy enough that it doesn't need carding. If you want to blend the pet hair with another fiber, like

wool, to modify the properties of the resulting yarn, you would need to card them together.

## 3. Spin

Spinning twists the hairs together to form a ply (single strand). Two common spinning tools are the drop spindle and the spinning wheel. A drop spindle has a weight at one end of the shaft (my first drop spindle was a pencil stuck through a foam rubber ball). You set the spindle turning in the same way that you would spin a top. A spinning wheel has a foot treadle to keep the wheel turning continuously. With both tools, it's the rotation that supplies the twist.

Two things control the thickness of the yarn: the amount of hair twisted into an individual ply and the number of plies in your final yarn. A single ply will coil back on itself and is very difficult to work with. You generally need at least 2 plies to make a workable yarn. You make yarn by spinning two or more plies together, opposite the direction in which they were originally spun. For example, if your individual plies were spun clockwise, when you ply them together to make yarn you would spin the spindle or wheel counterclockwise.

## 4. Wash, set and dry

Wind the plied yarn into a hank by wrapping the yarn around and around, hand to elbow, the way you might coil a long extension cord or phone cable. Tie the hank loosely in about 4 places with lengths of string or other yarn to keep the hank from getting tangles. Submerge the hank in very warm, soapy water. I usually add a healthy amount of an inexpensive shampoo directly to the water for most house pet yarns. If the hair is particularly dirty or from an oily-coated breed, I may use a grease-cutting dish soap. Don't agitate the yarn or it might felt; just let it soak for 10–15 minutes then drain. If the water was very dirty, repeat the soaking process. Rinse the hank by submerging it in clean

water that is at least as hot as the water you soaked it in. Continue the submerge-and-drain process until all trace of soap is removed. Gently squeeze as much water as you can from the hank. Never wring it. Roll the hank in a towel to blot out more water. Hang the damp hank somewhere out of the way with good air circulation until it is completely dry. Don't use anything made of metal (it may rust a bit and stain your yarn) or wood (it may be damaged by the moisture). Hang a weight from the bottom to straighten the hank. When the yarn is completely dry, wind it into a ball and it's ready to use.

## What is the yarn like?

That depends on the fiber you used and how you processed it. Dog undercoat yarn is very soft and fuzzy; most people mistake it for angora. Yarn made from single-coated breeds like Afghan hound will be smoother and not have the fuzzy "halo" that an undercoat yarn has. Cat-hair yarn, Persian or Himalayan for example, will be very soft and drape well. Since pet hair doesn't have the crimp that wool does, it tends to be inelastic. Some pet-hair yarns, such as Afghan hound, will felt and others like the Samoyed won't, so be careful which yarns you mix in a project.

## What can you do with it?

Pet-hair yarn is virtually as versatile as most other types of yarn. As with commercial yarns, each yarn has its own characteristics and you need to pair a project with a suitable yarn.

One final thing to keep in mind: Dog hair is much, much warmer than wool. I had to give up my original dream of making a Max-hair sweater. After I started working with the hair, I realized that if I made a whole sweater with it, I'd never be able to wear it. Smaller projects such as ear bands, hats, mittens or socks are more suitable for pet hair, and will give the wearer a treasured item made from a beloved friend.♦♦





# Dog Hair Tam

DESIGN BY SUE E. HOTOVEC

If you have ever wondered what to do with the hair your beloved pet sheds, we have the answer! Collect it, spin it into yarn and crochet our stylish beret.

## SKILL LEVEL



INTERMEDIATE

## FINISHED SIZE

Fits all

## MATERIALS

- Hand spun dog hair/wool-blend novelty yarn (.75 oz/160 yds/21g) or similar light (light

worsted) weight wool or wool-blend yarn.

- Size D/3/3.25mm crochet hook or size needed to obtain gauge
- Tapestry needle

## GAUGE

5 sc = 1 inch

## SPECIAL STITCHES

**Treble treble (trtr):** Yo hook 4

times, insert hook in indicated st, yo, draw up a lp, [yo, draw through 2 lps on hook] 5 times.

## TAM

### Headband

**Row 1:** Ch 6, sc in second ch from hook, sc in each of next 4 chs, turn. (5 sc)

**Row 2:** Ch 6 (counts as first trtr), trtr (see Special Stitches), in each rem sc across, turn. (5 trtr)

**Row 3:** Ch 1, sc in each trtr across, turn. (5 sc)

Rep rows 2 and 3 until headband fits snugly around head at temples, ending with a row 2.

**Next row:** Sl st last row to foundation ch of row 1.

## Crown

**Rnd 1:** Working over end sts of headband rows, \*ch 5, sc over side of next trtr row, ch 5\*\*, sc between same trtr row and next sc row, rep from \* around, ending last rep at \*\*, join with sl st in first sc. (See Fig. 1)

Rnd 1: Last ch joins to base of 1st st

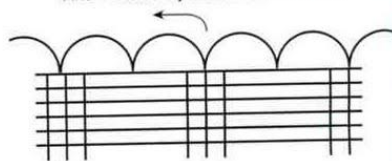


Fig. 1

**Rnd 2:** [Ch 7, sc in third ch of next ch-5] rep around, ending with ch 3, join with sl st in fourth ch of first ch-7. (See Fig. 2)

Rnd 2: 1/2 ch connects to center of 1st ch

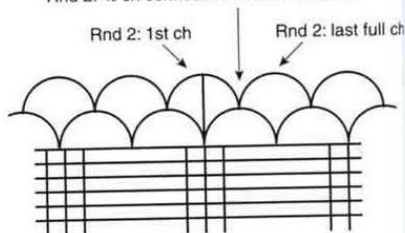


Fig. 2

Continued on page 44



# Plum Lace Cardigan

DESIGN BY MARGRET WILLSON

A delicate shell pattern, pretty lace insertions and elegant button accents define the look of feminine grace in this beautifully fashioned scoop-necked cardigan that will give a winning look for almost any occasion.

## SKILL LEVEL



INTERMEDIATE

## FINISHED SIZES

Instructions given fit 32-inch bust (*small*); changes for 36-inch bust (*medium*), 40-inch bust (*large*) and 44-inch bust (*X-large*) are in [ ].

## FINISHED GARMENT MEASUREMENT

36 inches (*small*), 41 inches (*medium*), 46 inches (*large*), and 51 inches (*X-large*)

## MATERIALS

- CGOA Presents Celebrity or fine (sport) weight wool/rayon yarn (200 yds per skein):  
11 [12, 14, 16] skeins #16 raspberry
- Size 2/2.20mm steel crochet hook





or size needed to obtain gauge

- (6) 3/4-inch buttons

## GUAGE

Working in pattern: [shell, sc]  
6 times = 4 inches; 19<sup>th</sup> pattern  
rows = 4 inches

## SPECIAL STITCHES

**Treble cluster (tr cl):** Holding  
back on hook last lp of each st, 2  
tr in indicated st, yo, draw through  
all 3 lps on hook.

**Treble treble (trtr):** Yo hook 4  
times, insert hook in indicated st,  
yo, draw up a lp, [yo, draw through  
2 lps on hook] 5 times.

**Shell:** (2 dc, ch 1, 2 dc) in indi-  
cated st.

## BODY

### FLORAL INSERT

**Row 1:** Beg at bottom edge, ch 323  
[371, 419, 467], dc in eighth ch  
from hook (*counts as first dc and ch-2*), [ch 2, sk 2 chs, dc in next  
ch] rep across, turn. (106 ch-2 sps)  
[122 ch-2 sps, 138 ch-2 sps, 154  
ch-2 sps]

**Row 2:** Ch 1, sc in first dc, \*ch 9,  
sk next dc, (sc, ch 4, **tr cl** (*see Spe-  
cial Stitches*)) in next dc, sk next  
dc, (tr cl, ch 4, sc) in next dc, rep  
from \* across to last 2 sps, ch 9,  
sk next dc and next 2 chs, sc in  
next ch, turn.

**Row 3:** Ch 10 (*counts as trtr and ch-4*);  
sc in ch-9 sp, \*ch 4 (tr cl, ch 4,  
sl st, ch 4, tr cl) in top of next  
tr cl, ch 4, sc in next ch-9 sp, rep  
from \* across, ending with ch 4,  
**trtr** (*see Special Stitches*) in last  
sc, turn.

**Row 4:** Ch 1, sc in trtr, [ch 5, sc  
in top of next tr cl] rep across,  
working last sc in sixth ch of ch-  
10, turn.

**Row 5:** Ch 5 (*counts as dc and ch-2*)  
dc in next ch-5 sp, ch 2, dc in next  
sc, \*ch 2, dc in next ch-5 sp, ch 2,  
dc in next sc, rep from \* across,  
turn. (106 ch-2 sps) [122 ch-2 sps,  
138 ch-2 sps, 154 ch-2 sps]

## UPPER BODY

**Row 1 (RS):** Ch 1, sc in first dc,  
**shell** (*see Special Stitches*) in next

dc, [sc in next dc, shell in next  
dc] rep across, ending with sc in  
third ch of ch-5, turn. (53 shells)  
[61 shells, 69 shells, 77 shells]

**Row 2:** Ch 5 (*counts as dc and ch-2*),  
\*sc in next shell sp, ch 2, dc in  
next sc\*\*, ch 2 rep from \* across,  
ending last rep at \*\*, turn.

**Row 3:** Ch 1, sc in first dc, shell  
in next sc, [sc in next dc, shell in  
next sc] rep across, ending with  
sc in third ch of ch-5, turn.

**Row 4:** Rep row 2.

Rep rows 3 and 4 for pattern stitch  
19 times.

## DIVIDE FOR UNDERARMS

### RIGHT FRONT

Continuing to work in pattern, work  
11 [13, 14, 16] shells, sc in next  
dc, turn.

Work even in pattern for a total of  
22 [26, 30, 34] rows from under-  
arm. Fasten off.

### Right Front Neck Shaping

**Row 1 (RS):** Sk 3 [4, 5, 5] shells,  
join yarn with sl st in next dc, ch  
1, sc in same dc, ch 2, 2 dc in next  
sc, sc in next dc, work in pattern  
across rem 7 [8, 8, 10] shells in  
pattern, turn.

**Row 2:** Work in pattern across,  
ending with sc in last shell, ch 2,  
**dc dec** (*see Stitch Guide*) in next  
sc and last dc, turn.

**Row 3:** Ch 2, 2 dc in next sc; work  
in pattern across, turn. (6 shells)  
[7 shells, 7 shells, 9 shells]

**Row 4:** Work in pattern across,  
ending with sc in last shell sp,  
ch 2, dc dec in next sc and last  
dc, turn.

**Row 5:** Ch 2, dc in dc dec, work in  
pattern across, turn.

**Row 6:** Work in pattern across, end-  
ing with dc in last dc, turn.

Work even in pattern on 6 [7, 7, 9]  
shells for 12 more rows. At end of  
12th row, fasten off.

## BACK

**Row 1 (RS):** With RS facing, sk  
next 4 [4, 6, 6] shells for underarm,  
join yarn with sl st in next dc, ch  
1, sc in same dc, work in pattern  
across next 23 [27, 29, 33] shells,

ending sc in next dc, turn.

Continuing in pattern, work even  
for a total of 36 [40, 44, 48] rows,  
turn.

## Back Neck Shaping

### Right Shoulder

Work in pattern across first 6 [7, 7,  
9] shells, turn.

Work even in pattern for three more  
rows. Fasten off.

### LEFT SHOULDER

Sk center 11 [13, 15, 15] shells, join  
yarn with a sl st in next dc, ch 1,  
sc in same dc, work 4 rows even in  
pattern on rem 6 [7, 7, 9] shells. At  
end of fourth row, fasten off.

### LEFT FRONT

With RS facing, sk next 4 [4, 6, 6]  
shells for underarm, join yarn with  
sl st in next dc, ch 1, sc in same  
dc, work in pattern across rem 11  
[13, 14, 16] shells, turn.

Work even in pattern for a total of  
22 [26, 30, 34] rows from under-  
arm. Do not fasten off at end of  
last row.

### Left Front Neck shaping

**Rows 1-6:** Rep instructions for  
Right Front Neck Shaping, re-  
versing shaping.

Work even in pattern on 6 [7, 7, 9]  
shells for 12 more rows. At end of  
12th row, fasten off.

## SLEEVE (make 2)

### FLORAL INSERT

**Row 1:** Ch 89, dc in eighth ch from  
hook (*counts as first dc and ch-2*),  
[ch 2, sk 2 chs, dc in next ch] rep  
across, turn. (28 ch-2 sps)

**Row 2:** Ch 1, sc in first dc, \*ch  
9, sk next dc, (sc, ch 4, tr cl) in  
next dc\*\*, sk next dc (tr cl, ch 4,  
sc) in next dc, rep from \* across,  
ending last rep at \*\*, sk last dc  
and next 2 chs, (tr cl, ch 4, sc)  
in next ch, turn.

**Row 3:** Ch 6 (*counts as trtr*), \*(tr cl,  
ch 4, sl st, ch 4, tr cl) in top of next  
tr cl, ch 4, sc in next ch-9 sp, ch  
4, rep from \* across, ending with  
trtr in last sc, turn.

*Continued on page 44*



# Cotton Candy Ripple Blanket

DESIGN BY PEGGY LONGSHORE



Ultrasoft baby yarn in a luscious mix of confectionery colors highlights this sweet, simple blanket. It works up quickly in a classic ripple design accented with chain loops that are later connected into decorative braids.

## SKILL LEVEL



INTERMEDIATE

## FINISHED SIZE

35 x 45 inches

## MATERIALS

- Caron Simply Soft medium (worsted) weight acrylic: 30 oz/1500 yds/851g #9801 baby brights (MC)
- Caron Grandma's Best crochet cotton size 10: 400 yds white (CC)
- Size 1/2.25mm steel crochet hook
- Size G/6/4mm crochet hook or size needed to obtain gauge
- Tapestry needle

## GAUGE

With **G hook** and MC: 4 sc = 1 inch; 4 sc rows = 1 inch

## AFGHAN

**Row 1 (RS):** With G hook and MC, ch 191, sc in second ch from hook, sk next ch, [[sc in each of next 3 chs, 2 sc in each of next 2 chs, sc in each of next 3 chs, sk next 2



chs) twice, {sc in each of next 7 chs, 2 sc in next ch, ch 10, 2 sc in next ch, sc in each of next 7 chs, sk next 2 chs} twice] 3 times, \*sc in each of next 3 chs, 2 sc in each of next 2 chs, sc in each of next 3 chs \*, sk next 2 chs, rep from \* to \* once, sk next ch, sc in next ch, turn. (6 ch-10 lps)

**Row 2:** Working in front of ch-10 lps, ch 1, sc through both lps of first sc; working in **front lps** (see *Stitch Guide*) only across, sk next sc, [{sc in each of next 3 sc, 2 sc in each of next 2 sc, sc in each of next 3 sc, sk next 2 sc} twice, {sc in each of next 7 sc, 2 sc in each of next 2 sc, sc in each of next 7 sc, sk next 2 sc} twice] 3 times, \*sc in each of next 3 sc, 2 sc in each of next 2 sc, sc in each of next 3 sc\*, sk next 2 sc, rep from \* to \* once, sk next sc, sc through both lps of last sc, turn.

**Row 3:** Working behind ch-10 lps, ch 1, sc through both lps of first sc; working in **back lps** (see *Stitch Guide*) only across, sk next sc, [{sc in each of next 3 sc, 2 sc in each of next 2 sc, sc in each of next 3 sc, sk next 2 sc} twice, {sc in each of next 7 sc, 2 sc in next sc, ch 10, 2 sc in next sc, sc in each of next 7 sc, sk next 2 sc} twice] 3 times, \*sc in each of next 3 sc, 2 sc in each of next 2 sc, sc in each of next 3 sc\*, sk next 2 sc, rep from \* to \* once, sk next sc, sc through both lps of last sc, turn.

**Rows 4-144:** Rep rows 2 and 3, ending with row 2.

**Row 145:** Working behind ch-10 lps, ch 1, sc through both lps of first sc, working in back lps only across, sk next sc, [{sc in each of next 3 sc, 2 sc in each of next 2 sc, sc in each of next 3 sc, sk next 2 sc} twice, {sc in each of next 7 sc, 2 sc in each of next 2 sc, sc in each of next 7 sc, sk next 2 sc} twice] 3 times, \*sc in each of next 3 sc, 2 sc in each of next 2 sc, sc in each of next 3 sc\*, sk next 2 sc, rep from \* to \* once, sk next sc, sc through both lps of last sc, turn.

**Row 146:** Working in front of ch-10 lps through front lps only across,

rep row 145. Do not fasten off.

#### Braiding

Beg at bottom of afghan with first column of ch-10 lps, draw second ch-10 lp through first ch-10 lp, [draw next ch-10 lp directly above through previous lp] rep to top of afghan. Rep with each of 5 rem columns of ch-10 lps.

**Row 147:** Ch 1, sc through both lps of first sc; working in back lps only across, sk next sc, [{sc in each of next 3 sc, 2 sc in each of next 2 sc, sc in each of next 3 sc, sk next 2 sc} twice, {sc in each of next 7 sc, sc in next sc; inserting hook under ch-10 lp when working next 2 sts, sc in same sc as last sc, sc in next sc (lp joined), sc in same sc as last sc made, sc in each of next 7 sc, sk next 2 sc} twice] 3 times, \*sc in each of next 3 sc, 2 sc in each of next 2 sc, sc in each of next 3 sc\*, sk next 2 sc, rep from \* to \* once, sk next sc, sc through both lps of last sc, turn.

**Row 148:** Ch 1, sc through both lps of first sc; working in front lps only across, sk next sc, [{sc in each of next 3 sc, 2 sc in each of next 2 sc, sc in each of next 3 sc, sk next 2 sc} twice, {sc in each of next 7 sc, 2 sc in each of next 2 sc, sc in each of next 7 sc, sk next 2 sc} twice] 3 times, \*sc in each of next 3 sc, 2 sc in each of next 2 sc, sc in each of next 3 sc\*, sk next 2 sc, rep from \* to \* once, sk next sc, sc through both lps of last sc. Do not fasten off.

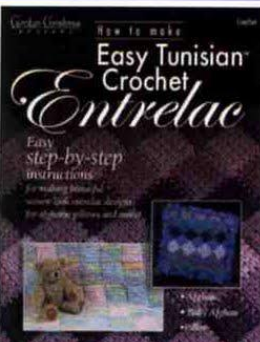
#### EDGING

**Rnd 1:** Ch 3 (counts as first dc) 2 dc in first sc (corner made); dc evenly sp around outer edge of afghan, working 3 dc in each rem corner st, do not join.

**Rnd 2:** Working in back lps only, sl st in each dc around, join with sl st through first sl st. Fasten off.

**Rnd 3:** With size 1 steel hook, attach CC with sl st in back lp only of any sl st of rnd 2, ch 2, [sl st in back lp only of next sl st, ch 2] rep around, join with sl st to back lp of first st. Fasten off. ••

## CGOA Pattern Gallery



Step-by-step guide to creating Easy Tunisian™ Crochet Entrelac by Carolyn Christmas \$7.99

[www.easytunisian.com](http://www.easytunisian.com)



Simple double hook crochet stitches, easy shaping and sensational yarns create three attention grabbing fashion scarves to perk up your wardrobe.

DH-1103 Simply Sensational Fashion Scarf Trio \$6.95 + \$1.50 Shipping & Handling

Darla J. Fanton  
Designs by Darla J  
PMB#408

18335 NW West Union Rd, Suite C  
Portland, OR 97229  
[www.designsbydarla.com](http://www.designsbydarla.com)

See the newest patterns and books from your favorite designers here in the Pattern Gallery!



# Indian Summer Wrap

DESIGN BY CAROL ALEXANDER

Worked in a palette of fall colors, our light and airy stole will cloak you in gentle warmth on those cool evenings as summer fades into autumn.

## SKILL LEVEL



INTERMEDIATE

## FINISHED MEASUREMENT

19 x 72 inches

## MATERIALS

- Patons Grace or fine (sport) weight cotton yarn (1.75 oz/50g per skein):
  - 8 skeins #60603 apricot (MC)
- Patons Cha Cha or novelty eyelash yarn (1.75 oz/50g per skein):
  - 3 skeins #2005 tango (CC)
- Size F/5/3.75mm crochet hook or size needed to obtain gauge

## GAUGE

Working in pattern: (dc, petal) = 2¼ inches; petal row and sc row = 1 inch

## WRAP

**Row 1 (RS):** With MC, ch 77, sc in 12th ch from hook (*counts as first dc and ch-4*), [ch 6, sc in same ch as last sc] 3 times, ch 4, sk next 4 chs, dc in next ch, \*ch 4, sk next 4 chs, sc in next ch, [ch 6, sc in same ch as last sc] 3 times (*petal made*),

*Continued on page 45*



# Confetti Toggle Jacket

DESIGN BY DORIS CHAN FOR LION BRAND YARN



Any little girl will feel like a princess when she wears this adorable jacket. Fashionable and fun, it works up quickly with a large hook and bulky yarn.

## SKILL LEVEL



INTERMEDIATE

## FINISHED SIZES

Instructions given fit 20-inch chest (*small*); changes for 23-inch (*medium*) and 26-inch (*large*) are in [ ].

## FINISHED GARMENT MEASUREMENT

24 inches (*small*), 27 inches (*medium*) and 30 inches (*large*)

## MATERIALS

- Lion Brand Lion Bouclé or super bulky (super chunky) weight yarn (2½ oz/57 yds/71g per ball):  
3 [4, 5] balls #201 sprinkles (MC)
- Lion Brand Fun Fur or novelty eyelash yarn (1¼ oz/60 yds/50g per ball):  
1 ball #191 violet (CC)
- Sizes K/10½/6.5mm and M/N/13/9mm crochet hooks or sizes needed to obtain gauge
- Scraps of contrasting yarn for markers

- Needle and matching thread for sewing toggle loop
- ¾-inch in diameter plastic rings for buttons (or 3 purchased buttons)
- Yarn needle

## GAUGE

With **K hook** and CC: 6 sc = 2 inches

With **M/N hook** and MC: 3 sc = 2 inches and (dc row, sc row) = 1½ inches

## SPECIAL STITCHES

### Foundation single crochet (fsc):

Insert hook through both lps of base ch of previous fsc, yo, draw up a lp, yo, draw through 1 lp on hook (*base ch made*), yo, draw through 2 lps on hook.

### Beginning foundation single

**crochet (beg fsc):** Insert hook in indicated st, yo, draw up a lp, yo, draw through 1 lp on hook (*base ch made*), yo, draw through 2 lps on hook.

## JACKET

### YOKE

**Foundation row:** Beg at neck,

with M/N hook and MC, ch 4, **beg fsc** (see *Special Stitches*) in second ch from hook, leave next 2 chs unworked; beg in beg fsc, work 11 [13, 15] **fsc** (see *Special Stitches*), ch 3, remove hook from lp, place lp on safety pin. Do not fasten off. **Do not turn.** (12 fsc) [14 fsc, 16 fsc]

**Row 1:** Sk first 2 chs and first 2 fsc; leaving a 1-yard tail, join MC with a sl st in next fsc, sc in each of next 6 [8, 10] fsc, sl st in next fsc. Fasten off. Turn. (6 sc) [8 sc, 10 sc]

### Size Small Only

**Row 2:** Pick up dropped lp, sc in second ch from hook, sc in next ch, sc in each of next 2 sc, sc in next sl st, sc in each of next 6 sc, sc in next sl st, sc in each of next 2 sc, sc in each of next 2 chs, turn. (16 sc)

### Size Medium Only

**Row 2:** Pick up dropped lp, sc in second ch from hook, sc in next ch, \*2 sc in next sc, sc in next sc, sc in next sl st, sc in next sc, 2 sc in next sc\*, sc in each of next 4 sc, rep from \* to \* once, sc in each of next 2 chs, turn. (22 sc)

### Size Large Only

**Row 2:** Pick up dropped lp, sc in second ch from hook, sc in next ch, sc in each of next 2 sc, sc in next sl st, 2 sc in next sc, sc in each of next 8 sc, 2 sc in next sc, sc in next sl st, sc in each of

*Continued on page 46*







# Mohair-Trim Jacket

DESIGN BY  
BELINDA "BENDY"  
CARTER

Our luxurious, brushed-yarn jacket is a sensory delight! The attractive repeating diamond pattern, recessed sleeves and contrasting collar and cuffs create a study in fashion-forward design.

## SKILL LEVEL



INTERMEDIATE

## FINISHED SIZES

Instructions given fit 32-inch bust (*small*); changes for 36-inch (*medium*), 40-inch (*large*) and 44-inch (*X-large*) are in [ ].





## FINISHED GARMENT

### MEASUREMENT

38 inches (*small*), 41 inches (*medium*), 46 inches (*large*) and 49 inches (*X-large*)

### MATERIALS

- Berroco Furz or bulky (chunky) weight nylon/wool/acrylic yarn (1.75 oz/90 yds/50g per skein): 14 [15, 17, 18] skeins #3814 roan (MC)
- Berroco Mohair Classic or bulky (chunky) weight mohair/wool/nylon yarn (1.5 oz/93 yds/43g per skein): 1 skein #B8600 (CC)
- Sizes H/8/5mm and J/10/6mm crochet hooks or size needed to obtain gauge
- JHB International buttons: 6 #37636 moon dust, 7/8-inch

### GAUGE

With **J hook**, 13 hdc = 5 inches; 4 hdc rows = 2½ inches

### SPECIAL STITCHES

**Front post double crochet (fpdc):** Yo, insert hook from front to back to front around vertical post of indicated st (see *Stitch Guide*), yo, draw up a lp, yo, complete dc (see *Stitch Guide*).

**Back post double crochet (bpdc):** Yo, insert hook from back to front to back around vertical post of indicated st (see *Stitch Guide*), yo, draw up a lp, yo, complete dc (see *Stitch Guide*).

**Front post treble crochet (fptr):** Yo hook twice, insert hook from front to back to front around vertical post of indicated st (see *Stitch Guide*), yo, draw up a lp, yo, complete tr (see *Stitch Guide*).

### JACKET

#### Back

**Row 1 (RS):** With J hook and MC, ch 56 [60, 68, 72] for foundation ch, ch 2 more (*counts as first hdc throughout*), hdc in third ch from hook and in each rem ch across, turn. (57 hdc) [61 hdc, 69 hdc, 73 hdc]

**Row 2:** Ch 2, **bpdc** (see *Special*

*Stitches*) over next hdc, [hdc in next hdc, bpdc over next hdc] rep across, ending with hdc in top of ch-2, turn. (29 hdc and 28 bpdc) [31 hdc and 30 bpdc, 35 hdc and 34 bpdc, 37 hdc and 36 bpdc]

**Row 3:** Ch 2, \*sk next bpdc and next hdc, **fptr** (see *Special Stitches*) over next bpdc; working behind fptr just made, hdc in skipped hdc; working in front of last fptr made, fptr over skipped bpdc, hdc in next hdc, rep from \* across, ending with hdc in top of ch-2, turn.

**Row 4:** Ch 2, bpdc over next st, [hdc in next st, bpdc over next st] rep across, ending with hdc in top of ch-2, turn.

**Row 5:** Ch 2, **fpdc** (see *Special Stitches*) over next bpdc, hdc in next hdc, \*sk next bpdc and next hdc, fptr over next bpdc; working behind fptr just made, hdc in skipped hdc; working in front of last fptr made, fptr over skipped bpdc, hdc in next hdc, rep from \* across to last 2 sts, fpdc over next bpdc, hdc in top of ch-2, turn.

**Row 6:** Rep row 4.

Rep rows 3–6 for pattern until Back measures 13 inches from beginning.

#### Armhole Shaping

**Next row:** Sl st in each of first 3 [3, 5, 5] sts, continue in established pattern across row to last 2 [2, 4, 4] sts, turn. (53 sts) [57 sts, 61 sts, 65 sts]

Continuing to work in established pattern, **hdc** dec 1 st (see *Stitch Guide*) at beg and end of each of next 4 [4, 4, 6] rows, then work even on 45 [49, 53, 53] sts until Back measures 7½ [8, 8½, 9] inches from beg of armhole shaping.

#### Neck Shaping

Continuing in established pattern, work across first 13 [15, 15, 15] sts, fasten off, sk next 19 [19, 23, 23] sts, attach thread with a sl st in next st, work in pattern across rem 13 [15, 15, 15] sts. Fasten off.

#### LEFT FRONT

**Row 1 (RS):** With J hook and MC, ch 26 [28, 32, 34] for foundation ch, ch

2 more (*counts as first hdc throughout*), hdc in third ch from hook and in each rem ch across, turn. (27 hdc) [29 hdc, 33 hdc, 35 hdc]

**Row 2:** Rep row 2 of Back. (14 hdc and 13 bpdc) [15 hdc and 14 bpdc, 17 hdc and 16 bpdc, 18 hdc and 17 bpdc]

**Row 3:** Ch 2, \*sk next bpdc and next hdc, fptr over next bpdc; working behind fptr just made, hdc in skipped hdc; working in front of last fptr made, fptr over skipped bpdc, hdc in next hdc, rep from \* across to last 2 [0, 0, 2] sts, work 1 [0, 0, 1] fpdc in next st, 1 [0, 0, 1] hdc in top of ch-2, turn.

**Row 4:** Rep row 4 of Back.

**Row 5:** Ch 2, fpdc over next bpdc, hdc in next hdc, \*sk next bpdc and next hdc, fptr over next bpdc; working behind fptr just made, hdc in skipped hdc; working in front of last fptr made, fptr in skipped bpdc, hdc in next hdc, rep from \* across to last 0 [2, 2, 0] sts, work 0 [1, 1, 0] fpdc over next st, 0 [1, 1, 0] hdc in top of ch-2, turn.

**Row 6:** Rep row 4 of Back.

Rep Rows 3–6 for pattern until Left Front measures 13 inches from beginning, ending with a WS row.

#### Armhole Shaping

**Next row (RS):** Sl st in each of first 3 [3, 5, 5] sts, continue in established pattern across row, turn. (25 sts) [27 sts, 29 sts, 31 sts]

Continuing to work in established pattern, **hdc** dec 1 st at armhole edge every row for each of next 4 [4, 4, 6] rows, then work even on 21 [23, 25, 25] sts until Left Front is 5 [5, 6, 6] rows less than Back.

#### Neck Shaping

**Next row:** Hdc dec 2 [2, 4, 4] sts at neck edge, turn.

Continuing to work in established pattern, **hdc** dec 2 sts at neck edge on each of next 3 rows, then work 1 [1, 2, 2] rows even on 13 [15, 15, 15] sts. Fasten off.

#### RIGHT FRONT

**Rows 1–6:** Rep rows 1–6 of Left Front.



Rep rows 3–6 for pattern until Right Front measures 13 inches from beg, ending with a WS row.

### Armhole Shaping

**Next row (RS):** Work in established pattern across to last 2 [2, 4, 4] sts, turn. (25 sts) [27 sts, 29 sts, 31 sts] Continuing to work in established pattern, hdc dec 1 st at armhole edge every row for each of next 4 [4, 4, 6] rows, then work even on 21 [23, 25, 25] sts until Right Front is 5 [5, 6, 6] rows less than Back.

### Neck Shaping

**Next row:** Hdc dec 2 [2, 4, 4] sts at neck edge, turn. Continuing to work in established pattern, hdc dec 2 sts at neck edge on each of next 3 rows, then work 1 [1, 2, 2] rows even on 13 [15, 15, 15] sts. Fasten off.

### SLEEVE (make 2)

**Row 1 (RS):** With J hook and MC, ch 23 [25, 25, 27] for foundation ch, ch 2 more (counts as first hdc throughout), hdc in third ch from hook and in each rem ch across, turn. (24 hdc) [26 hdc, 26 hdc, 28 hdc]

**Row 2:** Ch 2, hdc in each rem hdc across, ending with hdc in top of ch-2, turn.

**Rows 3 & 4:** Ch 2, hdc in first hdc, hdc in each rem hdc across to last hdc, 2 hdc in top of ch-2, turn. (28 hdc at end of row 4) [30 hdc at end of row 4, 30 hdc at end of row 4, 32 hdc at end of row 4]

**Rows 5–7 [5–7, 5 & 6, 5 & 6]:** Work even in hdc.

Rep rows 3–7 [3–7, 3–6, 3–6] until there are 36 [38, 40, 42] hdc, then work even in hdc until Sleeve measures 17 [17, 17½, 17½] inches from beg.

### Sleeve Shaping

**Next Row:** Sl st across first 3 [3, 5, 5] hdc, ch 2, hdc across to last 2 [2, 4, 4] hdc, turn. (32 hdc) [34 hdc, 32 hdc, 34 hdc]

Continuing to work in hdc, hdc dec 1 st at beg and end of each of next 3 [3, 1, 1] rows, work 2 [2, 4, 4] rows even in hdc, then hdc dc 2 sts at beg and end of each of next 4 rows. Fasten off. (10 hdc at end of last row, 14 hdc at end of last row, 16 hdc at end of last row)

Sew shoulder seams. With J hook and MC, attach yarn with sl st at bottom of either armhole, ch 1, sc evenly spaced around armhole. Fasten off. Rep for rem armhole. Place sleeve inside arm opening and sew sleeve in place. Rep for rem sleeve. Sew side and sleeve seams.

### LEFT FRONT EDGING

**Row 1:** With H hook, RS facing, attach MC with a sl st at upper corner of left front opening, ch 1, sc evenly spaced to lower corner, turn.

**Rows 2–4:** Ch 1, sc in each sc across, turn. At end of row 4, fasten off.

### RIGHT FRONT EDGING

**Row 1:** With H hook, RS facing, attach MC with a sl st at lower corner of right front opening,

ch 1, sc evenly spaced to upper corner, turn.

**Rows 2 & 3:** Ch 1, sc in each sc across, turn.

Mark positions for 6 buttonholes evenly spaced down right front.

**Row 4:** Ch 1, [sc in each sc across to next marker, ch 2, sk next 2 sc] 6 times, sc in each rem sc across. Fasten off.

### EDGING

With H hook, RS facing, attach MC at bottom of right front edge, ch 1, sc evenly spaced around entire opening, working 2 sc in each ch-2 sp, join with sl st in beg sc. Fasten off.

### COLLAR

**Row 1:** With H hook, RS facing, attach CC at top of row 4 on Right Front, ch 1; sc in same st, [dc in next st, sc in next st] rep across to top of row 4 on left front, turn.

**Row 2:** Ch 2, [sc in next st, dc in next st] rep across to last 2 sts, sc in next st, hdc in last st, turn.

**Row 3:** Ch 1, sc in first st, dc in next st, [sc in next st, dc in next st] rep across, ending with sc in top of ch-2, turn.

Rep rows 2 & 3 until collar measures 2½ inches from beg. Fasten off.

### CUFFS

**Note:** Do not join rnds unless otherwise stated; mark first st of each rnd with safety pin or other small marker.

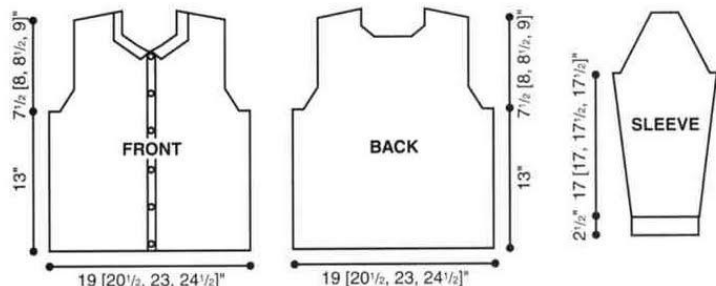
**Rnd 1:** With H hook, RS facing, attach CC with a sl st in rem lp of foundation ch at sleeve seam, ch 1, sc in same st, [dc in next st, sc in next st] rep around.

**Rnd 2:** Dc in each sc and sc in each dc around.

Rep rnd 2 until cuff measures 2½ inches from beg, ending with a sc, join with sl st in next st. Fasten off.

### FINISHING

Sew buttons on left front opposite buttonholes.♦♦





# Berry Bobbles Backpack

DESIGN BY DEBBIE TABOR

Worked in worsted weight yarn in a textured berry-stitch pattern, this delightfully dimensional backpack is the perfect accessory for carrying school or sports necessities for the busy student or athlete.

## SKILL LEVEL



## FINISHED SIZE

5 inches deep x 7 inches wide x  
9 inches tall

## MATERIALS

- Sugar 'n Cream medium (worsted) weight cotton: 9 oz/450 yds/255g #93 violet
- Size G/6/4mm crochet hook or size needed to obtain gauge
- Doll mini overall buckle
- 2 nickel metal craft beads
- Tapestry needle

## GAUGE

4 sc = 1 inch; 4 sc rows = 1 inch

## BACKPACK

### BODY

**Row 1 (RS):** Beg at bottom, leaving a length for finishing, ch 26, sc in

*Continued on page 47*

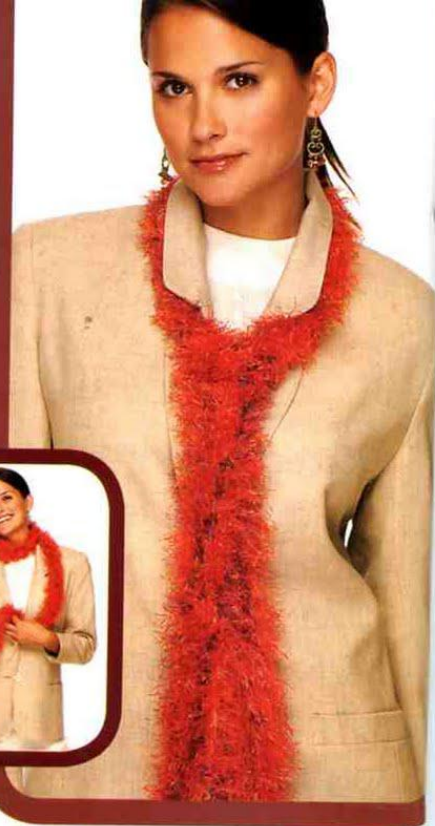




# Go Anywhere Tie

DESIGN BY BRENDA STRATTON

Add a splash of color and a fun, flirty touch to your wardrobe this season with our trendy faux fur tie. Its versatility lets you wear it in a variety of ways to accent almost any style outfit.



## SKILL LEVEL



BEGINNER

## FINISHED SIZE

2 x 70 inches

## MATERIALS

- Lion Brand Fun Fur Prints or novelty acrylic eyelash yarn:  
3 oz/114 yds/80g #209 mango
- Size L/11/8mm crochet hook or size needed to obtain gauge

## GAUGE

4 sc = 1 inch; 2 sc rows = 1 inch

## TIE

**Row 1:** Beg at narrow end ch 9, sc in second ch from hook and in each ch across, turn. (8 sc)

**Row 2:** Ch 1, sc in each sc across, turn.

Rep row 2 until piece measures 70 inches or length desired. Fasten off.♦♦



# Precious Preemie Blanket

DESIGN BY ROSE PIRRONE

Cuddle our tiniest babies in love with this lightly textured, striped blanket worked in a soft palette of pastel colors.

## SKILL LEVEL



INTERMEDIATE

## FINISHED SIZE

17 x 19 inches

## MATERIALS

- Red Heart Soft Baby or acrylic fine (sport) weight yarn (594 yds per skein):
  - 1 (7 oz) skein #7815 light blue (A)
  - 1 (7 oz) skein #7225 light yellow (B)
  - 1 (6 oz) skein #2848 nursery (C)
- Size G/6/4mm crochet hook or size needed to obtain gauge

## GAUGE

4 sc = 1 inch; 4 sc rows = 1 inch

## SPECIAL STITCHES

**Long single crochet (lsc):** Insert hook in indicated st in second row below, yo, draw up lp to top of working row, yo, draw through both lps on hook.

**Picot:** Ch 3, sc in third ch from hook.

## BLANKET

**Row 1:** With A, ch 61, sc in second

ch from hook, sc in each rem ch across, turn. (60 sc)

**Rows 2-4:** Ch 1, sc in each sc across, turn. At end of row 4, fasten off. Do not turn.

**Row 5 (RS):** Sk first st, join C with a sl st in next st, ch 1, work 3 lsc (see *Special Stitches*) in corresponding sc in second row below, [sk 2 sc, 3 lsc in next sc 2 rows below] rep across, ending with sk last sc, turn. (60 lsc)

**Row 6:** Ch 1, sc in each lsc across, ending with sk last lsc, sc in last sc of previous row, turn. (60 sc)

**Rows 7-9:** Rep rows 2-4.

**Row 10:** With RS facing, using A, rep row 5.

**Rows 11-14:** Rep rows 6-9.

**Rows 15-102:** Rep rows 5-14, ending with a row 12. Fasten off at end of row 102.

## EDGING

**Rnd 1:** With RS facing, join B with a sl st at any corner, ch 1,

3 sc in same st, sc evenly spaced around, working 3 sc in each corner, join with sl st in back lp only of first sc.

**Rnd 2:** Ch 1; working in **back lps** only (see *Stitch Guide*) this rnd, sc in same st as joining, sc in each rem sc around, working 3 sc in each corner sc, join with sl st in back lp only of first sc.

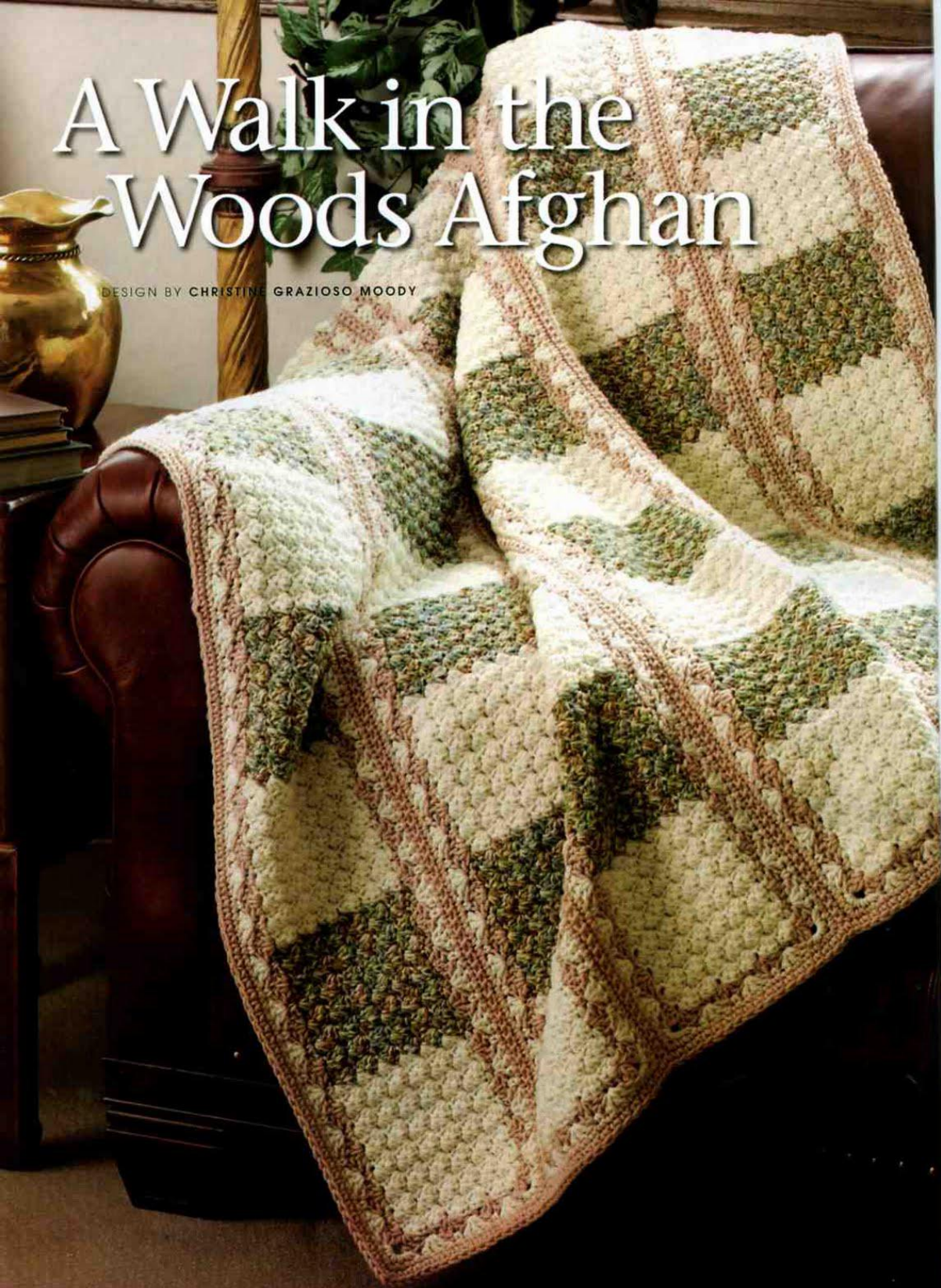
**Row 3:** Ch 1; working in back lps only this rnd, sc in same st as joining, **picot** (see *Special Stitches*), [sc in each of next 2 sc, picot] rep around, adjusting number of sc worked after last picot if necessary, join with sl st in first sc. Fasten off.♦♦





# A Walk in the Woods Afghan

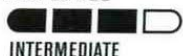
DESIGN BY CHRISTINE GRAZIOSO MOODY





A handsome pattern of blocks and stripes worked in the soft, earthy colors of an autumn forest create the striking design of this cozy afghan that's the perfect accent for a library, den or dorm room. Make it in luscious pastels for a softly feminine bedroom accent.

#### SKILL LEVEL



INTERMEDIATE

#### FINISHED SIZE

47 x 66 inches

#### MATERIALS

- Red Heart Super Saver or medium (worsted) weight yarn: 24 oz/1200 yds/680g #313 aran (A)
- 18 oz/900 yds/510g #305 aspen print (B)
- 13 oz/650 yds/369g #334 buff (C)
- Size I/9/5.5mm crochet hook or size needed to obtain gauge
- Tapestry needle

#### GAUGE

Working in pattern: (6 half shells, sc) = 5 inches; 14 rows = 5½ inches

#### PATTERN NOTE

To **change color** in single crochet, insert hook in indicated stitch, yarn over with working color, draw up a loop, drop working color to wrong side, yarn over with next color, complete single crochet.

#### SPECIAL STITCHES

**Half shell:** (Sc, hdc, dc) in indicated st.

**Shell:** (2 dc, ch 1, 2 dc) in indicated st or sp.

**Corner shell:** (3 dc, ch 2, 3 dc) in indicated st or sp.

**Beginning corner shell (beg corner shell):** (Ch 3, 2 dc, ch 2, 3 dc) in indicated st or sp.

#### AFGHAN

##### PANEL (make 6)

**Row 1 (RS):** Beg at bottom, with B, ch 20, **half shell** (see *Special Stitches*) in second ch from hook, [sk 2 chs, half shell in next ch] rep across to last 3 chs, sk 2 chs, sc in last ch, turn. (6 half shells, 1 sc)

**Row 2:** Ch 1, half shell in first sc, [half shell in next sc] 5 times, sc in last sc of last half shell, turn.

**Rows 3–14:** Rep row 2 for pattern st, changing to A in last sc of row 14 (see *Pattern Note*), turn. Fasten off B.

**Rows 15–28:** Rep row 2, changing to B in last sc of row 28, turn. Fasten off A.

**Rows 29–42:** Rep row 2, changing to A in last sc of row 42, turn.

**Rows 43–168:** Rep rows 1–42, ending with a row 28. Do not change color in last sc of row 168. Fasten off.

##### PANEL BORDER

**Rnd 1:** With RS facing, join C with a sl st over end st of row 1 at bottom right corner; working over end sts of rows across long edge, **beg corner shell** (see *Special Stitches*) in same st, \*sc over end st of next row, [sk next row, **shell** (see *Special Stitches*) over end st of next row, sk next row, sc over end st of next row] rep to next corner, ending with **corner**

**shell** (see *Special Stitches*) over end st of last row\*; working across top of last row, \*\*sc in next sc, [shell in next sc, sc in next sc] twice\*\*, corner shell in next sc; working down next long edge, rep from \* to \*; working in rem lps of foundation ch across bottom, rep from \*\* to \*\*, join with sl st in top of first ch-3. Fasten off.

**Rnd 2:** With RS facing, join A with a sl st in first corner shell sp, ch 1, 5 sc in same sp; \*3 dc in next sc, [sc in next shell sp, 3 dc in next sc] rep to next corner\*\*, 5 sc in corner shell sp, rep from \* around, ending last rep at \*\*, join with sl st in first sc. Fasten off.

**Rnd 3:** With RS facing, join C with a sl st in center sc of first 5-sc corner group, ch 1, 3 sc in same st, sc in each rem st around, working 3 sc in each corner st, join with a sl st in first sc. Fasten off.

#### ASSEMBLY

Matching bottoms and tops, with WS tog, whip stitch panels tog with tapestry needle and C.

#### AFGHAN BORDER

With RS facing, join C with a sl st in center sc of any 3-sc corner group, ch 1, 3 sc in same sc, sc in each rem sc around, working 3 sc in each corner sc, join with sl st in first sc. Fasten off.♦♦





## Collect a Crocheted Flower for Every Month of the Year

### August—Poppy

Although poppies come in a variety of colors, including white, purple and yellow, red is the color most associated with the flower. Red poppies grew profusely in the battlefields of Flanders during World War I, memorialized in the following lines from the poem, "In Flanders Fields" in 1915 by Lt. Col. John McCrae of the Canadian Medical Corps.

*"In Flanders Fields the poppies blow  
Between the crosses, row on row,  
That mark our place, and in the sky,  
The larks, still bravely singing, fly,  
Scarce heard amid the guns below.  
We are the dead."*

The deeply moving poem provided the inspiration for the poppy to become the emblem of remembrance for soldiers who died in battle. Thus the meaning most associated with the poppy is eternal sleep.

Three years later an American, Moina Michael, was working in a New York City YMCA canteen when she started wearing a poppy in memory of the millions who died on the battlefield. Today it is the official memorial flower of the Veterans of Foreign Wars of the United States.

### September—Morning Glory

The endearing morning glory is perhaps one of the most popular of the vine flowers. Give a morning glory something to climb and it will entwine itself around almost anything. They are perfect to decorate a fence, lamppost or trellis. They boast beautiful, dark heart-shaped leaves and breathtaking, trumpetlike flowers that can grow to three inches in diameter. The big, fragrant flowers unfurl in the early morning to greet the sun and then close up in the afternoon.

Native to the tropics, more than 200 species of morning glories come from the Americas alone. The morning glory is especially popular in Japan where it has been grown since the sixth century. The Japanese name for morning glory, "Asagao," means "morning face."

Morning glories come in a variety of colors from blue, purple and pink to scarlet, white and multicolored. The meaning most associated with the morning glory is affection, and it is often called the Mantle of the Virgin Mary.

# Birthday Flowers

## Poppy and Morning Glory

DESIGNS BY MARY LAYFIELD

Our lovely flowers for August and September will evoke memories of warm summer days filled with sunshine and subtle fragrances long after the season has passed.



### SKILL LEVEL



INTERMEDIATE

### SIZE

Poppy = 3 inches in diameter  
Morning Glory = 3 inches long

### Poppy Pin

#### MATERIALS

- South Maid crochet cotton size 10 (350 yds per ball):  
25 yds #494 victory red (MC)  
2 yds #12 black (CC)
- Size 7/1.65mm steel hook or size needed to obtain gauge
- Tapestry needle
- 1 1-inch long pin back
- Black seed beads
- Sewing needle
- Sewing thread:  
black  
red

### GAUGE

9 dc = 1 inch

### POPPY

#### PETAL PIECE (make 2)

##### First Petal

**Row 1 (RS):** With MC, ch 6, join to form ring, ch 2 (counts as first hdc throughout), work 4 more hdc in ring, turn. (5 hdc)

**Row 2:** Ch 2, hdc in first hdc, hdc in next hdc, 2 hdc in next hdc, hdc in next hdc, 2 hdc in top of ch-2, turn. (8 hdc)

**Row 3:** Ch 2, hdc in first hdc, hdc in next hdc, 2 hdc in next hdc, hdc in each of next 2 hdc, 2 hdc in next hdc, hdc in next hdc, 2 hdc in top of ch-2, turn. (12 hdc)

**Row 4:** Ch 2, \*2 hdc in next hdc, hdc in next hdc, 2 hdc in next hdc\*, dc in each of next 4 hdc, rep from \* to \* once, hdc in top of ch-2, turn. (16 sts)

**Row 5:** Ch 1, sc in first st, hdc in each of next 2 sts, 2 hdc in next st, hdc in each of next 2 sts, dc in each of next 4 sts, hdc in each of next 2 sts, 2 hdc in next st, hdc



in each of next 2 sts, sc in last st, turn. (18 sts)

**Row 6:** Ch 1, sc in each of first 6 sts, 2 hdc in next st, hdc in each of next 4 sts, 2 hdc in next st, sc in each of last 6 sts, turn. (20 sts)

**Row 7:** Ch 1, sc in each of first 4 sts, ch 2, [sc in next st, ch 2] rep across to last 4 sts, sc in each of last 4 sts. Fasten off.

#### Remaining 3 Petals

**Rows 1-7:** With RS facing, join MC with sl st in ch-6 ring, rep rows 1-7 of First Petal.

Place first Petal Piece on top of second Petal Piece so 4 petals of each piece are staggered.

With sewing needle and red sewing thread, tack two pieces together. Tack pin back on WS.

#### CENTER

##### Top

**Rnd 1 (RS):** With CC, ch 1 for center ch, ch 3 more (counts as first dc), work 11 more dc in center ch, join with sl st in top of ch-3. (12 dc)

**Rnd 2:** Working in **back lps** only (see *Stitch Guide*) this rnd, ch 1, sc in same st as joining, sc in each dc around, join with sl st in first sc. Fasten off, leaving short length for tacking Center to Petal Pieces.

##### Bottom

**Rnd 1 (RS):** With CC, ch 1 for center ch, ch 2 more (counts as first hdc), work 7 more hdc in center ch, join with sl st to top of ch-2. Fasten off. (8 hdc)

Place Bottom on center of RS of top Petal Piece. Place Top over Bottom and with length left for finishing, tack edges of Top to Petal Piece.

With sewing needle and black sewing thread, sew black seed beads around outer edge of Center and sew three seed beads at center of Center.

## Morning Glory Pin

#### MATERIALS

- DMC Cebelia crochet cotton size 10 (284 yds per ball):
  - 10 yds #800 light blue (A)
  - 8 yds #799 medium blue (B)
  - 2 yds #1 white (C)

- DMC Cebelia crochet cotton size 20 (416 yds per ball):
  - 8 yds #3052 light green (D)
  - 5 yds #324 medium green (E)
- Sizes 10/1.15mm and 7/1.65mm steel crochet hooks or size needed to obtain gauge
- Tapestry needle
- 1 1-inch pin back
- 2 yellow flower centers

#### GAUGE

With **No. 7 hook** and A: 9 dc = 1 inch

#### MORNING GLORY

**FLOWER (make 1 with A and 1 with B)**

**Rnd 1 (RS):** With size 7 hook, ch 1 (center ch), ch 3 more (counts as first dc throughout), work 7 dc in center ch, join with sl st in top of ch-3. (8 dc)

**Rnds 2-4:** Ch 2 (counts as first hdc throughout), hdc in each rem hdc around, join with sl st in top of ch-2. (8 hdc)

**Rnd 5:** Ch 2, 2 hdc in next hdc, [hdc in next hdc, 2 hdc in next hdc] rep around, join with sl st in top of ch-2. (12 hdc)

**Rnd 6:** Ch 2, hdc in next hdc, ch 1, [hdc in each of next 2 hdc, ch-1] rep around, join with sl st in top of ch-2. (12 hdc, 6 ch-1 sps)

**Rnd 7:** Sl st between ch-2 and next hdc, ch 2, 2 hdc in same sp, ch 1, [3 hdc between next pair of hdc, ch 1] rep around, join with sl st in top of ch-2. (18 hdc, 6 ch-1 sps)

**Rnd 8:** Sl st between ch-2 and next hdc, ch 2, hdc in same sp, 2 hdc between next 2 hdc, ch 1, [2 hdc between first and second hdc of next 3-hdc group, 2 hdc between next 2 hdc of same 3-hdc group, ch 1] rep around, join with sl st in top of ch-2. (24 hdc, 6 ch-1 sps)

**Rnd 9:** Sl st between ch-2 and next hdc, ch 2, hdc in same sp, hdc between next 2 hdc, 2 hdc between next 2 hdc, ch 1, [2 hdc between first 2 hdc of next 4-hdc group, hdc between next 2 hdc, 2 hdc between last 2 hdc of same hdc group, ch 1] rep around, join with sl st in top of ch-2. (30 hdc, 6 ch-1 sps)

**Rnd 10:** Sl st between ch-2 and next hdc, ch 2, hdc in same sp, [hdc between next 2 hdc] twice, 2 hdc between next 2 hdc, ch 1, [2 hdc between first 2 hdc of next 5-hdc group, [hdc between next 2 hdc] twice, 2 hdc between last 2 hdc of same 5-hdc group, ch 1] rep around, join with sl st in top of ch-2. (36 hdc, 6 ch-1 sps)

**Rnd 11:** Sl st between ch-2 and next hdc, ch 2, [2 hdc between next 2 hdc, hdc between next 2 hdc] twice, ch 1, \*hdc between first 2 hdc of next 6-hdc group, [2 hdc between next 2 hdc, hdc between next 2 hdc] twice, ch 1, rep from \* around, join with sl st in top of ch-2. Fasten off. (42 hdc, 6 ch-1 sps)

#### Vertical Stripes

**Note:** Work vertical stripes on Flower A with C, work vertical stripes on Flower B with A.

With WS facing, working up columns of ch-1 sps, using size 7 hook, join thread with a sl st in ch-1 sp at bottom of any column, ch 1, sc in same sp, [ch 1, sc in next sp directly above] rep to top of column. Fasten off. Rep for each of 5 rem columns around.

#### BUD

##### SECTION (make 3)

Beg at bottom, with size 7 hook and A, ch 12, sc in second ch from hook, sc in each of next 3 chs, hdc in each of next 2 chs, dc in each of next 4 chs, hdc in next ch. Fasten off, leaving length for finishing.

With lengths left for finishing, sew all three sections tog across long edges to form a tube.

#### SMALL LEAF (make 1)

With one strand D and one strand E held tog, using size 7 hook, ch 12, 2 hdc in second ch from hook, 2 dc in each of next 2 chs, dc in each of next 3 chs, hdc in each of next 3 chs, sc in next ch, 3 sc in last ch; working in rem lps across opposite side of foundation ch, sc in next ch, hdc in each of next 3 chs, dc in each of next 3 chs, 2

*Continued on page 47*



# Hidden Treasures Scarf

Continued from page 9



## SPECIAL STITCHES

**Beginning foundation star st (beg foundation star st):** Yo, insert hook in second ch from hook, yo, draw up a lp, yo, insert hook in same ch, yo, draw up a lp, sk next ch, insert hook in next ch, yo, draw up a lp, yo, draw through all 6 lps on hook, ch 1 to secure (*eye made*).

**Foundation star st:** [Yo, insert hook in same ch as last leg of last star st made, yo, draw up a lp] twice, sk next ch, insert hook in next ch, yo, draw up a lp, yo, draw through all 6 lps on hook, ch 1 to secure (*eye made*).

**Beginning star st (beg star st):** [Yo, insert hook in eye of last star st made on previous row, yo, draw up a lp] twice, insert hook in eye of next star st, yo, draw up a lp, yo, draw through all 6 lps on hook, ch 1 to secure (*eye made*).

**Star st:** [Yo, insert hook in same st as last leg of last star st made, yo, draw up a lp] twice, insert hook in eye of next star st, yo, draw up a lp, yo, draw through all 6 lps on hook, yo, ch 1 to secure (*eye made*).

**End star st:** [Yo, insert hook in same st as last leg of last star st made, yo, draw up a lp] twice, insert hook in ch-1 at end of row, yo, draw up a lp, yo, draw through all 6 lps on

hook, ch 1 to secure (*eye made*).

**Treble cluster (tr cl):** Holding back on hook last lp of each st, work 2 tr in indicated st, yo, draw through all 3 lps on hook.

## SCARF

**Foundation row (RS):** With I hook and MC, ch 20, **beg foundation star st** (see *Special Stitches*) work in **foundation star st** (see *Special Stitches*) across, turn. (9 star sts)

**Row 1:** Ch 1, **beg star st** (see *Special Stitches*), 7 **star sts** (see *Special Stitches*), **end star st** (see *Special Stitches*), turn.

**Rows 2-7:** Rep row 1 for pattern. Fasten off at end of row 7.

**Row 8:** With I hook, RS facing, join CC with a sl st in last eye of last star st worked in previous row, rep row 1.

**Rows 9-15:** Rep row 1. Fasten off at end of row 15.

**Row 16:** With MC, rep row 8.

**Rows 17-23:** Rep rows 9-15.

**Rows 24-135:** Rep rows 8-23. Fasten off at end of row 135.

## POCKET (make 2)

**Foundation row:** Rep foundation row of Scarf.

**Rows 1-7:** Rep rows 1-7 of Scarf.

## Attaching Pockets

Pin Pockets in place at each end of Scarf.

**Rnd 1:** With I hook, working through both thicknesses, join MC with a sl st at upper left corner of either Pocket, ch 1, sc in same st, \*sc evenly spaced to corner, 3 sc in corner st, sc evenly spaced across to next corner, 3 sc in corner, sc evenly spaced to top of same Pocket\*; working through Scarf only, sc evenly spaced across to top corner of next Pocket, working through both thicknesses, rep from \* to \*, working through Scarf only sc evenly spaced to first sc, join with sl st in first sc. Do not fasten off.

## EDGING

**Rnd 1:** Ch 1, sc in same sc as join-

ing, \*ch 2, [sk next sc, sc in next sc, ch 2] rep to next corner, (sc, ch 2, sc) in corner sc, rep from \* around, join with sl st in first sc. Fasten off.

**Rnd 2:** With I hook, RS facing, join CC with a sl st in last ch-2 sp before any corner, ch 1, sc in same sp, \*5 dc in corner sp, sc in next sp, [3 dc in next sp, sc in next sp] rep across to next corner, rep from \* around, ending with 3 dc in last sp, join with sl st in first sc. Fasten off.

## FLOWER (make 2)

With G hook and CC, ch 4, join with sl st to form a ring.

**Rnd 1:** [(Ch 4, **tr cl** (see *Special Stitches*), ch 4, sl st) in ring] 5 times. Fasten off.

## FINISHING

Place green star flower bead at center of flower, then place pink pearl star flower bead on top of the green one, staggering points. Sew beads in place, starting from the WS of the flower. Place 6mm pearl at center of star flowers. Push the needle up through the center of the two star flower beads, and through center of pearl, then down through the star flower beads and the flower in the opposite direction. Rep several times to secure. Fasten off.

Sew 1 flower to outside of each Pocket.♦♦

## On-line Marketplace

Crochet Guild of America  
[www.crochet.org](http://www.crochet.org)

LNS Software Solutions  
Get Organized  
[www.lns-software.com](http://www.lns-software.com)

Crochet! magazine  
[www.crochetmagazine.com](http://www.crochetmagazine.com)

Crochet World magazine  
[www.crochet-world.com](http://www.crochet-world.com)



# Purple Fantasy Cardigan

Continued from page 11



even on 18 [19, 18, 20] sc, work 3 sc dec at each end of next row, work 2 [2, 2, 3] sc dec at each end of next row. Fasten off. (8 sc) [9 sc, 8 sc, 8 sc]

Sew shoulder seams. Sew sleeves in arm openings. Sew side and sleeve seams.

## COLLAR

Place marker 3 inches in from outer corner of lapel on each side.

With WS facing, join yarn with a sl st at first marker, ch 1, sc in same st, sc evenly spaced across to next marker, turn. Continue working in sc until collar measures 4 inches wide. Fasten off.

## Cuff Bell Shaping

With RS facing, join yarn with sl st at marker, ch 1, sc evenly spaced across, turn.

Continue to work in sc, work 2 sc inc evenly spaced across on next row and then every third row until cuff measures 5 inches from beg. Fasten off.

## Front Edging

With RS facing, join yarn with a sl st at lower right front corner, ch 1, sc in same st, sc evenly spaced around, join with sl st in first sc. Fasten off.

## Sleeve Edging

With RS facing, join yarn with a sl st at lower corner of sleeve opening, rep instructions for Front Edging.

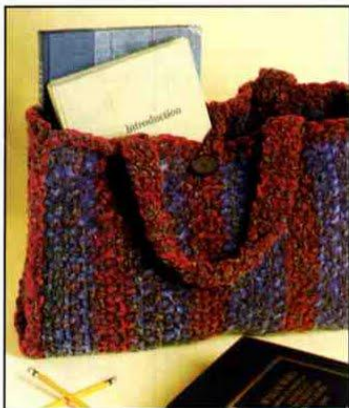
## FINISHING

### Lacing

Cut cord into one 6-foot and two 3-foot lengths. Beg 16 inches from bottom of front opening and working up to beg of lapel shaping, lace up front in shoestring style with 6-foot length, drawing cord through fabric 1 inch in from each front edge. With 3-foot lengths, rep up opening of each sleeve.♦♦

# Trendy Tweed Tote

Continued from page 14



and adding C in last sc of Row 12, turn.

**Rows 13–18:** Rep rows 3–8; at end of row 18, do not change to B. Fasten off both colors.

## Second Half

**Row 1:** With RS facing, working in rem lps of foundation ch of First Half, join 1 strand A and 1 strand B held tog with a sl st in first rem lp, ch 1, sc in same ch, sc in each rem ch across, turn.

**Rows 2–18:** Rep rows 2–18 of First Half.

## SIDE PIECE (make 2)

**Row 1 (RS):** Beg at bottom, with 1 strand A and 1 strand B held tog, ch 10, sc in second ch from hook, sc in each rem ch across, turn. (9 sc)

**Row 2:** Rep row 4 of Centerpiece.

**Row 3:** Rep row 3 of Centerpiece.

**Rows 4–25:** Rep rows 2 and 3.

**Row 26:** Ch 3, sk first 2 sc, sl st in next sc, [ch 3, sk next sc, sl st in next sc] 3 times. Fasten off.

## JOIN SIDE PIECES AND CENTERPIECE

Mark center 9 sts on each side of Centerpiece for bottom of tote. With RS facing out, matching bottoms of Side Pieces with bottom of tote, pin 1 Side Piece onto each side of Centerpiece.

**Rnd 1:** With 1 strand A and 1 strand B held tog, RS of Side Piece facing, working through both thicknesses, join yarn with a sl st in row 25 of either Side Piece and end st of Centerpiece, ch 1, sc in same st, sc over end st of each of next 24 rows, sc in each of next 9 sts across bottom, sc over end st of each of next 25 rows to top of tote, working 3 sc in last st at top corner, sc over end sts of rows across top of tote to next corner, 3 sc in corner st, continue around as established, ending with 2 sc in same st as first sc, join in first sc.

Mark center st on either side of Centerpiece at top of tote.

**Rnd 2:** [Ch 2, sk next sc, sl st in next sc] rep across to marked st, ch 15, sl st in fifth ch from hook, ch 5, sl st in last sc worked (*button loop made*), [ch 2, sk next sc, sl st in next sc] around, join with sl st at base of first ch-2. Fasten off.

## STRAP (make 2)

**Row 1:** With 1 strand A and 1 strand B held tog, leaving a 12-inch length at beg for finishing, ch 4, sc in second ch from hook, sc in each rem ch across, turn. (3 sc)

**Rows 2–36:** Sc in each sc across, ch



1, turn. At end of row 36, fasten off leaving a 12-inch length for finishing.

## FINISHING

Sew button on center front. With lengths left for finishing and tapestry needle, using photo as a guide, sew straps into front and back of tote. Bring ends of center 8 rows tog on underside of either strap and sew tog with tapestry needle and yarn. Rep on rem strap.♦♦

## Dog Hair Tam

Continued from page 18



**Rnd 3:** [Ch 9, sc in fourth ch of next ch-7] rep around, ending with ch 9, join with sl st at base of first ch-9. (See Fig. 3)

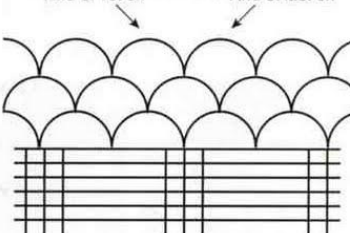


Fig. 3

**Rnd 4:** [Ch 11, sc in fifth ch of next ch-

9] rep around, ending with ch 5, join with sl st in fifth ch of first ch-11.

**Rnd 5:** [Ch 9, sc in sixth ch of next ch-11] rep around, ending with ch 9, join with sl st at base of first ch-9.

**Rnd 6:** [Ch 9, sc in fifth ch of next ch-9] rep around, ending with ch 4, join with sl st in fifth ch of first ch-9.

**Rnd 7:** [Ch 7, sc in fifth ch of next ch-9] rep around, ending with ch 7, join with sl st at base of first ch-7.

**Rnd 8:** [Ch 5, sc in fourth ch of next ch-7] rep around, ending with ch 3, join with st st in third ch of first ch-5.

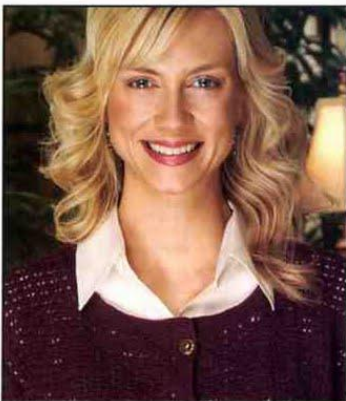
**Rnd 9:** \* [Ch 5, sc in third ch of next ch-5] twice, ch 5, [insert hook in third ch of next ch-5, yo, draw up a lp] twice, yo, draw through all 3 lps on hook, rep from \* around until 4 ch-5 sps rem. Fasten off, leaving 10-inch length for finishing.

## FINISHING

With tapestry needle and length left for finishing, sew centers of last 4 ch-5 sps tog.♦♦

## Plum Lace Cardigan

Continued from page 21



**Row 4:** Ch 1, sc in trtr, [ch 5, sc in top of next tr cl] rep across, turn.

**Row 5:** Ch 5 (counts as dc and ch-2), dc in next ch-5 sp, ch 2, dc in

next sc, [ch 2, dc in next ch-5 sp, ch 2, dc in next sc] rep across, turn. (28 ch-2 sps)

## UPPER SLEEVE

Rep rows 3 and 4 of Back Upper Body for pattern stitch 45 times for a total of 90 rows, at the same time inc one st at beg and end of every 2 [2, 1, 1] rows 6 [42, 14, 26] times, then every 3 [2, 2, 2] rows 24 [0, 34, 28] times, then work even on 24 [28, 39, 32] shells for 6 [6, 8, 8] rows. At end of last row, fasten off.

To increase on pattern row 3, work 2 sc in first and last st of each row. To increase on pattern row 4, ch 3 (counts as first dc), dc in first st, work in pattern across to last st, 2 dc in last st. On rows that are worked even, work sc in each sc or dc in each dc across to where pattern beg, then work in pattern to next group of sc or dc and work sc in each sc or dc in each dc to end of row. When there are 7 dc at beg and end of each row, incorporate them into pattern st on next row as follows: sc in first dc, sk 2 dc, shell in next dc, sk 2 dc, sc in next dc.

## ASSEMBLY

Sew shoulder seams, set in sleeves, sew sleeve seams.

## EDGING

### BODY EDGING

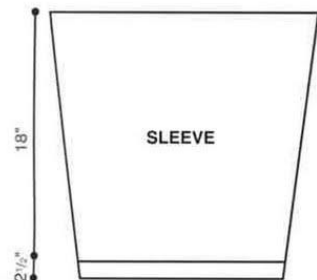
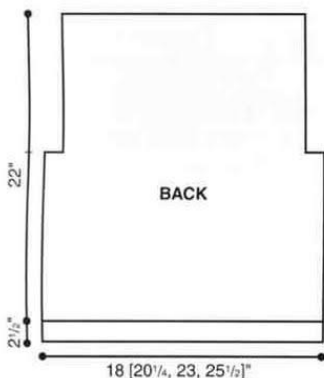
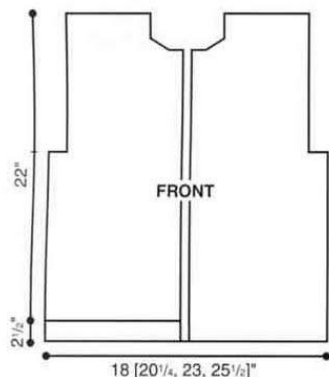
**Rnd 1:** With RS facing, join yarn with sl st at lower right front corner, ch 1, sc in same st, sc evenly sp up front, working sc over end st of each shell row and 2 sc over side of each dc, 3 sc at upper right corner, sc evenly sp around neck, increasing as necessary so work will lie flat, 3 sc in upper left corner, sc evenly sp down left front as for right front, sc evenly sp around bottom, join with sl st in beg sc.

**Rnds 2 & 3:** Ch 1, sc in same st as joining, sc in each rem sc around, working 3 sc in each corner sc,



join with sl st in beg sc.  
Placing end buttons 1 inch in from top and bottom, mark places for 6 buttonholes.

**Rnd 4:** Ch 1, sc in same st as joining, [sc in each sc to next marker, ch 4, sk 4 sc] 6 times, sc in each



rem sc around, working 3 sc in each corner sc, join with sl st in first sc.

**Rnd 5:** Ch 1, sc in same st as joining, sc in each rem sc and in each ch st around, working 3 sc in each corner sc, join with sl st in first sc.

**Rnds 6 & 7:** Rep rnds 2 and 3. At end of rnd 7, fasten off.

#### SLEEVE EDGING

**Rnd 1:** Join yarn with sl st at sleeve seam, ch 1, sc in same st; working in rem lps of foundation ch, sc in each st around, join with sl st in first sc.

**Rnds 2 & 3:** Ch 1, sc in same st as joining, sc in each rem sc around, join with sl st in first sc. At end of rnd 3, fasten off.

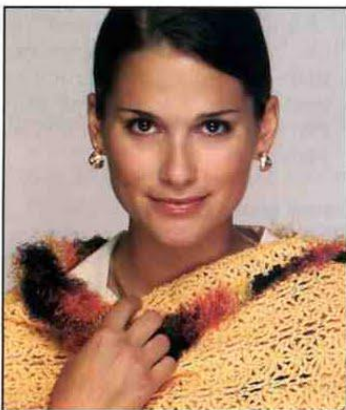
Rep rnds 1-3 for second sleeve.

#### FINISHING

Sew buttons onto left front opposite buttonholes.♦♦

## Indian Summer Wrap

*Continued from page 27*



ch 4, sk next 4 chs, dc in next ch, rep from \* across, turn. (7 petals, 8 dc, 14 ch-4 sps made)

**Row 2:** Ch 1, sc in first st, ch 1, sk next ch-4 sp, \*(sc, ch 3, sc, ch 2) in each of first 2 ch-6 sps on next

petal, (sc, ch 3, sc) in next ch-6 sp, ch 1\*\*, sc in next ch-4 sp, ch 2, sc in next ch-4 sp, ch 1, rep from \* across, ending last rep at \*\*, sk next 4 chs, sc in next ch, turn.

**Row 3:** Ch 4 (counts as dc and ch-1), sc in first ch-3 sp, \*ch 4, sc in next ch-3 sp, [ch 6, sc in same sp as last sc made] 3 times, ch 4, sc in next ch-3 sp\*\*, ch 2, dc in next ch-2 sp, ch 2, sc in next ch-3 sp, rep from \* across, ending last rep at \*\*, ch 1, dc in last sc, turn.

**Row 4:** Ch 1, sc in first sc, \*ch 1, sk next ch-4 sp, (sc, ch 3, sc, ch 2) in each of next 2 ch-6 sps, (sc, ch 3, sc) in next ch-6 sp, ch 1, sk next ch-4 sp\*\*, sc in next ch-2 sp, ch 2, sc in next ch-2 sp, rep from \* across, ending last rep at \*\*, sc in third ch of first ch-4, turn.

**Rows 5-169:** Rep rows 3 and 4 alternately, ending with row 3.

**Row 170:** Ch 1, sc in first dc, \*ch 1, sk next ch-4 sp, (sc, ch 3, sc, ch 2) in each of next 2 ch-6 sps, (sc, ch 3, sc) in next ch-6 sp, ch 1, sk next ch-4 sp\*\*, sc in next ch-2 sp, (sl st, ch 4, sl st) in next dc, sc in next ch-2 sp, rep from \* across, ending last rep at \*\*, sc in third ch of first ch-4, turn.

**Row 171:** Ch 7 (counts as first dc and ch-4), \*dc in next ch-3 sp, ch 3, sl st in next ch-3 sp, ch 3, dc in next ch-3 sp\*\*, ch 3, tr in next ch-4 sp, ch 3, rep from \* across, ending last rep at \*\*, ch 4, dc in last sc. Fasten off.

#### EDGING

**Rnd 1:** Join CC with a sl st in last st of row 171, ch 3 (counts as first dc), 4 dc in same st (corner made), \*dc evenly spaced across long edge to next corner, 5 dc in corner, dc evenly across short edge to next corner\*, 5 dc in corner, rep from \* to \* once, join with sl st in top of beg ch-3.

**Rnds 2 & 3:** Sl st in next dc, (sl st, ch 3, 4 dc) in next dc (corner made), dc in each dc around, working 5 dc in each corner dc, join with sl st in top of beg ch-3. Fasten off at end of rnd 3.♦♦



# Confetti Toggle Jacket

Continued from page 28



next 2 sc, sc in each of next 2 chs, turn. (22 sc)

## All Sizes

**Row 3:** Ch 3 (counts as first dc throughout), dc in each of next 1 [2, 2] sc, 5 dc in next sc (place marker in center dc for first corner), dc in each of next 2 [3, 3] sc, 5 dc in next sc (place marker in center dc for second corner), dc in each of next 4 [6, 6] sc, 5 dc in next sc (place marker in center dc for third corner), dc in each of next 2 [3, 3] sc, 5 dc in next sc (place marker in center dc for fourth corner), dc in each of next 2 [3, 3] sc, turn. (32 dc) [38 dc, 38 dc]

**Row 4:** Ch 1, sc in each dc across, ending with sc in top of ch-3, placing marker in each of 4 corner sc, turn. (32 sc) [38 sc, 38 sc]

**Row 5:** Ch 3, dc in each rem dc across, working 5 dc in each corner sc and marking center dc of each 5-dc group, turn. (48 dc) [54 dc, 54 dc]

**Rows 6 & 7:** Rep rows 4 and 5. (64 dc at end of row 7) [70 dc at end of row 7, 70 dc at end of row 7]

## Size Large Only

**Row 8:** Rep row 4. (70 sc)

**Row 9:** Ch 3, dc in each rem dc

across, working 3 dc in each corner sc and marking center dc of each 3-dc group, turn. (78 dc)

## BODY

### All Sizes

**Row 1:** Ch 1, sc in each of first 9 [10, 11] dc for first front, sk next 14 [15, 17] dc for first armhole, sc in each of next 18 [20, 22] dc for back, sk next 14 [15, 17] dc for second armhole, sc in each of next 8 [9, 10] dc, sc in top of ch-3 for second front, turn. (36 sc) [40 sc, 44 sc]

**Row 2:** Ch 3, dc in each rem sc across, turn.

**Row 3:** Ch 1, sc in each dc across, ending with sc in top of ch-3, turn.

**Rows 4-6:** Rep rows 2 and 3, then rep row 2.

## Sizes Medium and Large Only

**Rows 7 & 8:** Rep row 3, then rep row 2.

## All Sizes

### Edging

**Rnd 1 (WS):** Sc in each dc across bottom to next corner, 3 sc in corner, sc evenly spaced up front opening to next corner, 3 sc in corner st, sc evenly spaced around neck opening to next corner, 3 sc in corner st, sc evenly spaced down front opening to next corner, 2 sc in same st as first sc, join with sl st in first sc. Fasten off.

## Sleeve (make 2)

**Rnd 1:** With WS facing, join MC with a sl st at either underarm, ch 1; beg in same st as joining, work 14 [16, 18] sc evenly sp around, join with sl st in first sc, turn. (14 sc) [16 sc, 18 sc]

**Rnd 2:** Ch 3, dc in each rem sc around, join with sl st in top of ch-3, turn. (14 dc) [16 dc, 18 dc]

**Rnd 3:** Ch 1, sc in same st as joining, sc in each rem sc around, join with sl st in first sc, turn.

**Rnds 4-8:** Rep rnds 2 and 3, ending with rnd 2.

## Sizes Medium and Large Only

**Rnds 9 & 10:** Rep rnd 3, then rep rnd 2.

## All Sizes

**Rnd 9 [11, 11]:** Beg in same st as joining, ch 1, sc in each of first 2 dc, sc dec, [sc in each of next 2 dc, sc dec] 2 [3, 3] times, sc in each of last 2 [0, 2] dc, join with sl st in first sc. Fasten off. (11 sts) [12 sts, 14 sts]

Rep Rnds 1-9 [11, 11] on rem armhole.

Block to measurement before working Body and Sleeve Trim.

## BODY TRIM

**Rnd 1:** With K hook and RS facing, join CC with a sl st in any sc across bottom edge, ch 1; beg in same st as joining, 2 sc in each sc around, working 3 sc in each corner sc, join with sl st in first sc, turn.

**Rnd 2:** Beg in same st as joining, ch 1, sc in each sc around, working 3 sc in each corner sc, join with sl st in first sc. Fasten off.

## SLEEVE TRIM

**Rnd 1:** With K hook, RS facing, join CC with a sl st in any sc at bottom of sleeve, ch 1, 2 sc in same st, 2 sc in each rem sc around, join with sl st in first sc, ch 1, turn.

**Rnd 2:** Sc in same st as joining, sc in each rem sc around, do not join. Do not turn. Place marker in last sc of rnd.

**Rnd 3:** Sc in each sc around, join with sl st in first sc. Fasten off.

## TOGGLE LOOP (make 3)

With K hook and MC, ch 14, sl st in second ch from hook, sl st in each rem ch across; taking care not to twist lp, join with sl st in first sl st, sl st in each of next 2 sl sts to form seam. Fasten off. Flatten end opposite lp end of toggle lp so seam is on WS.

## BUTTON (make 3)

With K hook and MC, leaving a long tail, work 15 sc over plastic ring,



join with sl st in first sc. Fasten off, leaving long tail for finishing. With yarn needle and length left for finishing, weave through every other sc, pull to tighten, and tie tightly. Leave ends for finishing.

# FINISHING

Sew first toggle loop ½ inch down from Body Trim at right neck edge, second 1½ inches up from Body Trim at bottom edge and third centered between the first and second, with lp ends extending beyond outer edge of Body Trim. With lengths left for finishing, sew buttons to left front opposite buttonholes.♦♦

## Berry Bobbles Backpack

*Continued from page 33*



second ch from hook, sc in each rem ch across, turn. (25 sc)

**Rows 2–20:** Ch 1, sc in each sc across, turn.

**Row 21:** Ch 1, sc in each sc across, **do not turn.**

**Row 22:** Working over row ends, ch 1, sc in end st of each row down to bottom corner; working in rem lps on opposite side of foundation ch, sc in each of next 25 sts, sc over end st of each row up to next corner, sc in each sc across last row, working 2 sc in last st,

turn. (93 sc)

**Rows 23–29:** Ch 1, sc in each sc across, turn.

**Row 30 (WS):** Ch 1, sc in first sc, [tr in next sc, pushing tr to RS to form bobble, sc in next sc] rep across, turn. (93 sts)

**Row 31:** Ch 1, sc in each st across, turn.

**Rows 32–55:** Rep rows 30 and 31 alternately.

**Row 56 (beading row):** Ch 1, sc in first sc, [tr in next sc, sc in next sc] 12 times, sc in each of next 2 sc, [ch 1, sk next sc, sc in each of next 2 sc] rep across, turn.

**Row 57:** Ch 1, sc in each st and each sp across, turn. (93 sc)

# FLAP

**Row 58:** Ch 1, sc in first sc, [tr in next sc, sc in next st] 12 times, turn. (25 sts)

**Row 59:** Ch 1, sc in each of next 25 sts, turn.

**Rows 60–77:** Rep rows 58 and 59. At end of row 77, fasten off.

# DRAWSTRING (make 2)

Leaving a length of yarn for finishing, ch 45. Fasten off, leaving a length of yarn for finishing.

# STRAP

**Row 1:** Leaving a length for finishing, ch 8, sc in second ch from hook and in each rem ch across, turn. (7 sc)

**Rows 2–290:** Ch 1, sc in each sc across, turn. Fasten off at end of row 290, leaving a length for finishing.

# STRAP LOOP

**Row 1:** Ch 10, sc in second ch from hook and in each rem ch across, turn. (9 sc)

**Rows 2 & 3:** Ch 1, sc in each sc across, turn. Fasten off at end of row 3, leaving a length for finishing.

# FINISHING

Whipstitch backpack tog along side opening.

Beg at either side, weave one Draw-

string through ch-1 sps of beading row to center front. Rep with rem Drawstring from opposite side to center front. Thread both ends of Drawstring at center front through a metal craft bead. Tie a knot at end of each Drawstring.

Fold Strap in half to find center. Sew center of Strap to center of row 59 at base of Flap.

Sew short edges of Strap Loop to center back of Backpack over rows 23–25.

Sew doll mini overall buckle to bottom of Flap at center. Sew rem metal craft bead horizontally to center front of row 41.

Thread both ends of Strap through Strap Loop, adjust to desired length and tie overhand knot in ends to secure.♦♦

## Birthday Flowers

*Continued from page 39*



dc in each of next 2 chs, 2 hdc in next ch. Fasten off.

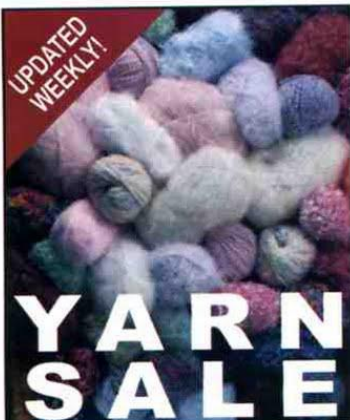
# LARGE LEAF (make 3)

With one strand C and one strand D held tog, using size 7 hook, ch 14, (hdc, dc) in second ch from hook, 2 tr in next ch, tr in each of next 4 chs, dc in each of next 2 chs, hdc in each of next 2 chs, sc in each of

*Continued on page 48*



UPDATED WEEKLY!



# YARN SALE

Presented by *Herrschners*  
OF GREAT CRAFT BY NANCY KANE

30-70% Off!

1,000's of  
Brand-Name Yarns

Plus a \$5 Offer!

[YarnSale.com/Crochet Offer](http://YarnSale.com/Crochet Offer)

next 2 chs, 3 sc in last ch; working in rem lps across opposite side of foundation ch, sc in each of next 2 chs, hdc in each of next 2 chs, dc in each of next 2 chs, tr in each of next 4 chs, 2 tr in next ch, (dc, hdc) in next ch. Fasten off.

#### BACK PIECE

**Row 1:** With two strands E held tog and size 7 hook, ch 17, sc in second ch from hook, sc in each rem ch across, turn. (16 sc)

**Rows 2-5:** Ch 1, sc in each sc across, turn. Fasten off at end of row 5.

#### FLOWER BASE (make 3)

**Rnd 1:** With E and size 10 hook, ch 3, join with sl st to form ring, ch 3, 8 dc in ring, join in top of ch-3. (9 dc)

**Row 2:** Ch 1, sc in same st as joining, \*ch 10, sc in second ch from hook, sc in next ch, hdc in next ch, dc in each of next 6 chs, sk next sc on rnd 1, sc in next sc, rep from

\* 3 times, do not join. Fasten off, leaving length for finishing.

With length left for finishing, tack one Flower Base to bottom of each Flower and one to bottom of Bud.

For each flower, fold yellow flower center in half and place inside flower.

#### FINISHING

Holding Back Piece with one short end at top and, using photo as a guide, sew one Large Leaf at top right side of Back Piece, one Large Leaf at bottom on opposite short edge and rem Large Leaf approximately  $\frac{1}{2}$  inch down from top left side. Sew Flower A over Large Leaf at bottom of Back Piece and Flower B above Flower A and directly below Large Leaf at upper right corner. Sew Small Leaf directly above Large Leaf at upper left corner of Back Piece and sew Bud on top of Small Leaf with bottom pointing down. Tack pin back to WS of Back Piece.♦♦

New!

Crocheted  
Felt Boot  
Slippers

Quick to crochet  
in thick wool.  
Felt in the  
washing  
machine then  
decorate with  
needle felting.



*Fiber Trends®*

To find a store near you visit our website

[www.fibertrends.com](http://www.fibertrends.com)

Retailers, for wholesale information contact:

Bryson Distributing @ 1.800.544.8992  
or Fiber Trends, Inc. @ 1.888.733.5991

P.O. Box 7266 • E. Wenatchee, WA 98802-7266  
Phone (509) 884-8631 • Fax (509) 886-9861

Easy  
gripping  
handles!



"Get hooked on addi®"

Dealer Inquiries:

Skacel Collection, Inc.

Telephone: (425) 291-9600

Fax: (425) 291-9601

Toll-Free: (800) 255-1278

[www.skacelknitting.com](http://www.skacelknitting.com)

