

BB & B extra

SUBSCRIBER EXCLUSIVE • DECEMBER 2019



A DIGITAL
SUPPLEMENT TO
BEAD&BUTTON
MAGAZINE

Season's beadings!



Dainty drop necklace p.3
Metallic magic bracelet p.6
Buds & studs p.9



'TIS THE SEASON TO BEAD!

Instead of trying to do it all this holiday season, how about we focus on what we love — beading! You will make this time of the year more joyous for your family and friends when you avoid stress and embrace your passion.

Here to help you find a better balance through beading are three stress-free projects. Senior Technical Editor Connie Whittaker shows you how to make her “Dainty drop necklace,” featuring a sensational crystal baroque pendant. Even more luminous is Natalia Savastano’s even-count peyote band, “Metallic magic bracelet.” The third project, “Bud & studs,” comes from Virginia Jensen’s newest book, *Two-Hole Bead Stitching* (available at JewelryAndBeadingsStore.com). This project guides the adventurous beginner to successfully make a necklace and bracelet combo (so I know you can do it!).

Whether you make these jewelry projects for yourself or for loved ones, I hope you find time to curl up with your beads this winter. From all of us at *Bead&Button*, to you and your family, happy holidays! See you in 2020!

Diane Jolie

Senior Associate Editor, *Bead&Button*
editor@beadandbutton.com

Editorial Director **Diane M. Bacha**
 Managing Design Director **Lisa A. Bergman**
 Senior Associate Editor **Diane Jolie**
 Senior Technical Editor **Connie Whittaker**
 Assistant Editor **Katie M. Salatto**
 Contributing Editor **Julia Gerlach**
 Technical Editors **Erica Barse, Cassie Donlen, Cary Borelli**
 Editorial Assistant **Lora Groszkiewicz**
 Assistant Design Director **Lisa M. Schroeder**
 Graphic Designer **Kelly Katlaps**
 Photographer **Bill Zuback**
 Illustrator **Kellie Jaeger**

ADVERTISING

Ad Sales Manager **Lori Schneider**
 Ad Production
Samantha Sergeant, Melissa Valuch

B&B Extra is published bimonthly by
 Kalmbach Media Co.,
 21027 Crossroads Circle, P.O. Box 1612,
 Waukesha, WI 53187-1612



© 2019 Kalmbach Media Co.
 All rights reserved. This publication may not be reproduced in part or in whole without written permission from the publisher. The designs in *B&B Extra* are for your personal enjoyment. They may not be taught or sold without permission.

A little me-time goes a long way (and stimulates endorphins!) during these party-packed, special days.

Contents

Dainty drop necklace	p. 3
Metallic magic bracelet	p. 6
Buds & studs	p. 9

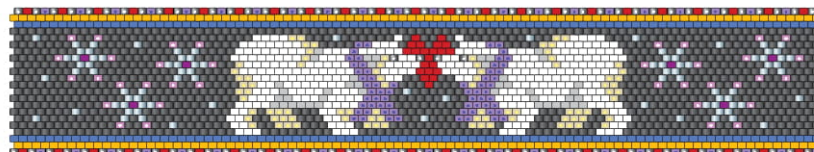


Visit *Bead&Button* online at FacetJewelry.com for free projects, videos, blogs, galleries, design challenges, and more.



Love **Alex Roeder's** necklaces? View a gallery of her work on FacetJewelry.com

Find **Word charts** on **Facet** for “Holiday patterns a-plenty.”



Take a **gemstone quiz** with Renée Newman’s help on FacetJewelry.com

Visit *Bead&Button* online at FacetJewelry.com

DAINTY DROP NECKLACE

designed by
Connie Whittaker

DIFFICULTY ●●○○○

bead weaving





materials
18 in. (46 cm)

- 1 22 x 15 mm crystal baroque pendant (Swarovski 6090, golden shadow)
- 71 2.5 x 5 mm SuperDuo beads (metallic suede light green)
- 4 g 11° seed beads (Toho 221, bronze)
- 2 g 11° Demi beads (Toho 221, bronze)
- 2 g 15° seed beads (Toho 703, matte mauve mocha)
- 1 lobster claw clasp
- 2 6 mm jump rings
- 1 2 in. (5 cm) extender chain
- Fireline, 6 lb. test
- beading needles, #11 or #12
- 2 pairs of chanosse, flatnose, and/or bentnose pliers

basics

- ending and adding thread
- opening and closing jump rings

FacetJewelry.com/basics

Stitch up a stylish but dainty necklace with a sparkling crystal pendant.

NECKLACE

1) On a comfortable length of thread, pick up a SuperDuo bead and three 15° seed beads three times (**figure 1, a–b**). Leaving a 6-in. (15 cm) tail, sew through the beads again to form a ring (not shown in the figure for clarity), and continue through the same hole of the first SuperDuo added (**b–c**).

2) Sew through the next 15°, skip the following 15°, and continue through the next 15° and SuperDuo (**figure 2, a–b**). Repeat this stitch twice (**b–c**).

3) Pick up a 15°, an 11° seed bead, and a 15°, and sew through the same hole of the next SuperDuo, positioning the beads on top of the three 15°s added in step 1 (**figure 3, a–b**). Repeat this stitch twice to complete

the round, and step up through the first 15° and 11° seed bead added in this step (**b–c**).

4) Sew through the three 11° seed beads using tight tension, drawing them into the center of the beadwork (**figure 4, a–b**), and retrace the thread path (not shown in the figure for clarity). Continue through the next 11° seed bead, the inner hole of the adjacent SuperDuo, and the open hole of the same SuperDuo (**b–c**).

5) Pick up four 11° seed beads and the pendant sewing through the hole from front to back (**figure 5, a–b**). Pick up four 11° seed beads, and sew back through the same hole of the SuperDuo to form a loop on this side of the SuperDuo (**b–c**). Pick up four 11° seed beads, and sew through the pendant from front to back, making sure the first loop of 11° seed beads is positioned on the left side of the SuperDuo and the pendant is not twisted (**c–d**). Pick up four 11° seed beads, and sew back through the same hole of the SuperDuo (**d–e**). Retrace the thread path of the pendant attachment (not shown in the figure for clarity), and sew through the other hole of the same SuperDuo, the 15°, the 11° seed bead, the 15°, the inner hole of the next SuperDuo, and the open hole of the same SuperDuo (**e–f**). End the tail but not the working thread.

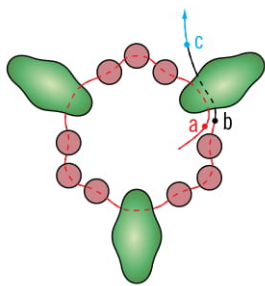
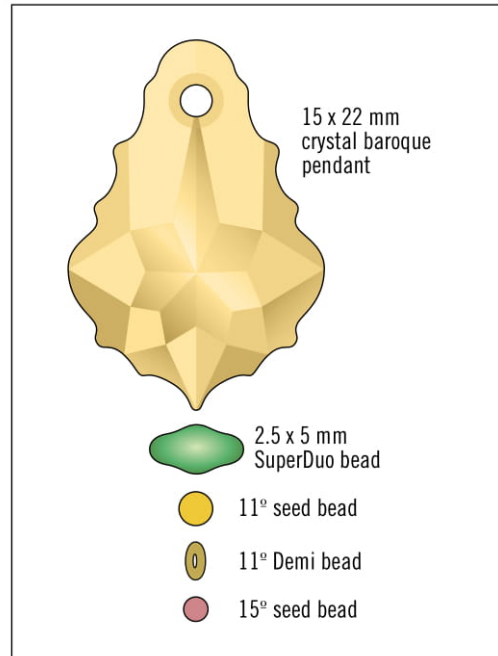


FIGURE 1

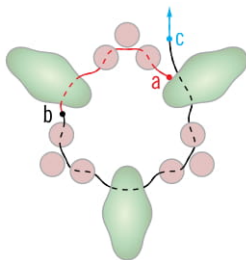


FIGURE 2

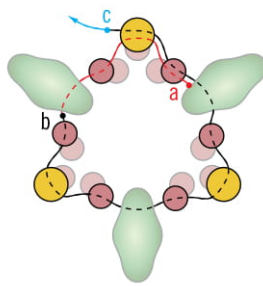


FIGURE 3

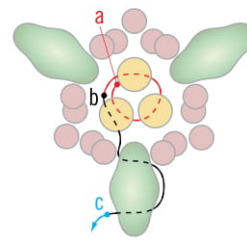


FIGURE 4

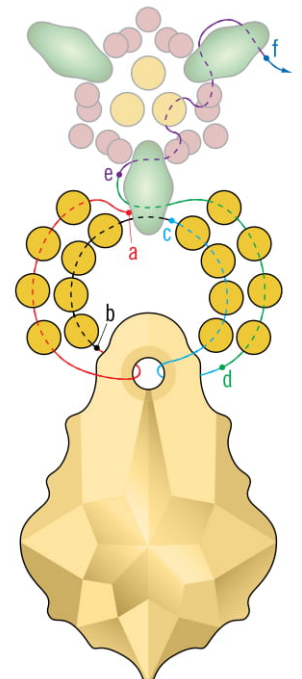


FIGURE 5

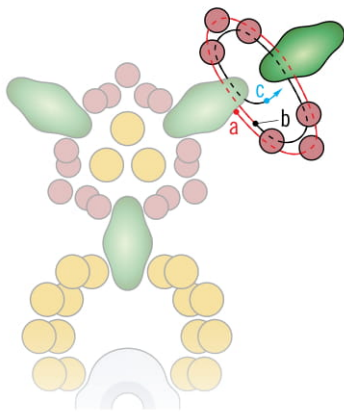


FIGURE 6

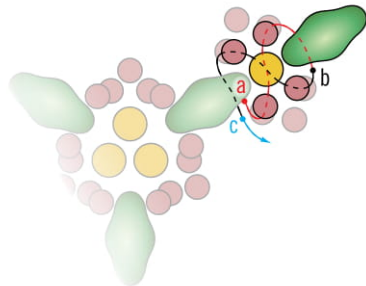


FIGURE 7

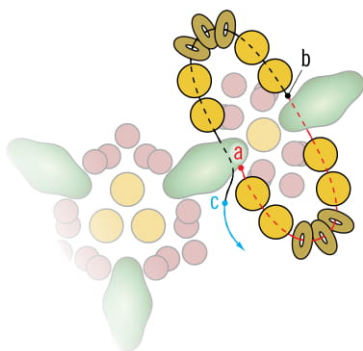


FIGURE 8

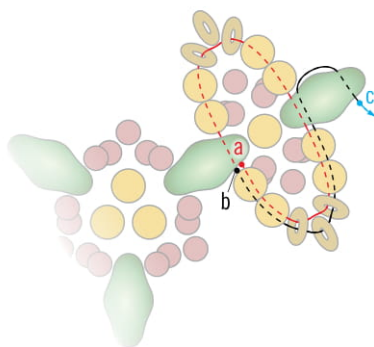


FIGURE 9

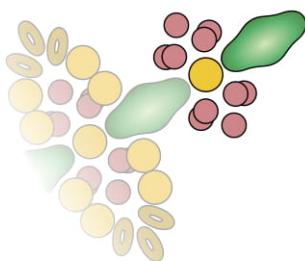


FIGURE 10

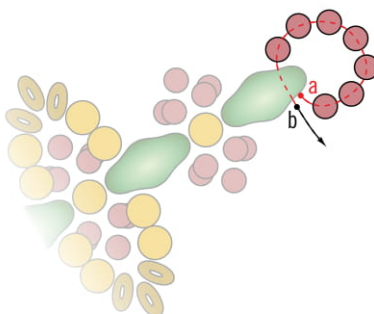


FIGURE 11

6) Pick up three 15°, a SuperDuo, and three 15°, and sew through the same hole of the SuperDuo your thread exited at the start of this step (**figure 6, a–b**). Retrace the thread path, skipping the center 15°s in the three-bead sets, using tight tension so the center 15°s stick out (**b–c**).

7) Pick up a 15°, an 11° seed bead, and a 15°, diagonally cross over the opening between the SuperDuos, and sew through the next SuperDuo, going in the same direction (**figure 7, a–b**). Pick up a 15°, sew through the 11° seed bead just added, pick up a 15°, and sew through the SuperDuo your thread exited at the start of this step, going in the same direction (**b–c**).

8) Pick up two 11° seed beads, three 11° Demi beads, and two 11° seed beads, and sew through the inner hole of the next SuperDuo (**figure 8, a–b**). Repeat this stitch, sewing through the SuperDuo your thread exited at the start of this step, going in the same direction (**b–c**). Retrace the thread path, skipping the center Demis (**figure 9, a–b**). Sew through the beadwork as shown to exit the open hole of the last SuperDuo added (**b–c**). This forms a large connector unit.

9) Repeat steps 6–7, and sew through the beadwork to exit the open hole of the last SuperDuo added, to form a small connector unit (**figure 10**).

10) Repeat steps 6–8 to add a large connector unit.

11) Repeat steps 9–10 15 times, then repeat step 9 once more to complete this side of the neckstrap, ending and adding thread as needed. Do not end the working thread.

12) Add a comfortable length of thread to the center SuperDuo component, exiting the open hole of the SuperDuo on the left. Repeat steps 6–11 to complete this side of the neckstrap.

CLASP

1) With the working thread from a neckstrap, pick up seven 15°, and sew through the same hole of the SuperDuo your thread is exiting to form a loop (**figure 11, a–b**). Retrace the thread path twice, and end this thread. Repeat this stitch on the end of the other neckstrap.

2) Attach a jump ring to the lobster claw clasp and the loop on one end of the neckstrap. Attach the other jump ring to the extender chain and the loop on the end of the other neckstrap. **B•B**

change it up

Substitute the baroque pendant with any top-hole pendant for a different look.



Connie Whittaker

cwhittaker@beadandbutton.com

METALLIC MAGIC BRACELET

designed by
Natalia Savastano

DIFFICULTY ●●○○○

even-count peyote stitch



materials

bracelet 5¾ in. (14.6 cm),
excluding clasp

- 11° cylinder beads
 - 4 g color A (Miyuki Delica DB0035, galvanized silver)
 - 4 g color B (Miyuki Delica DB1834, Duracoat galvanized champagne)
 - 4 g color C (Toho Treasure PF557, PermaFinish galvanized starlight)
- beading needles, #10
- Fireline, 6 lb. test, or nylon beading thread, size D

basics

- attaching a stop bead
- three-drop peyote stitch
- ending and adding thread
- peyote pattern finishing techniques

FacetJewelry.com/basics

11° cylinder beads

- color A
- color B
- color C

A trio of metallic colors combine in this three-drop peyote bracelet for a show-stopping party piece.

PEYOTE BAND

1) On a comfortable length of thread, attach a stop bead, leaving a 6-in. (15 cm) tail. Starting at the upper-right corner of the pattern, pick up 11° cylinder beads for rows 1 and 2: six As, six Bs, six Cs, and six As. These beads will shift to form the first two rows as the next row is added.

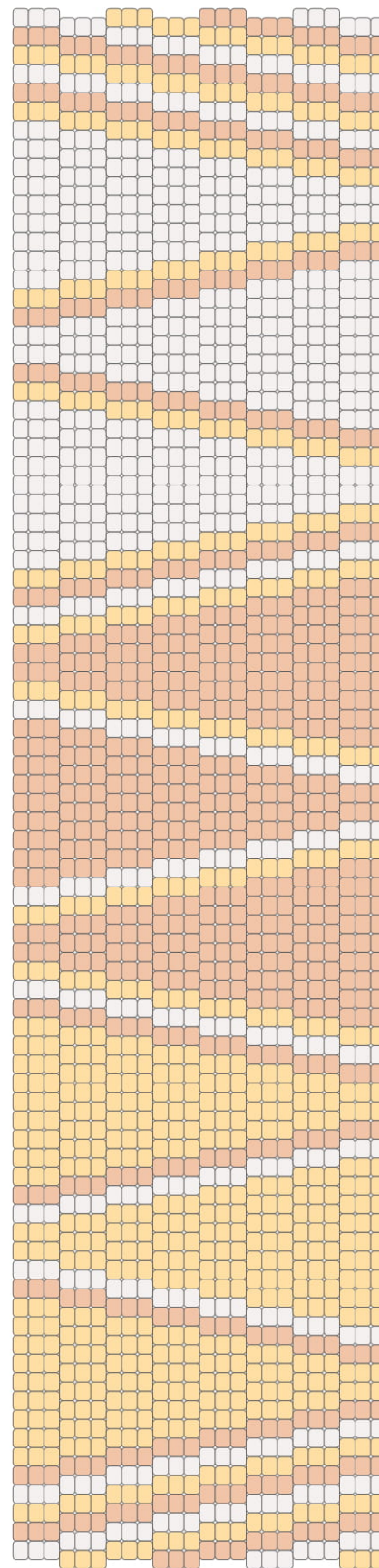
2) Following the **pattern** or the **Word chart**, work in flat, even-count, three-drop peyote stitch using the appropriate color cylinders. End and add thread as needed while you stitch, and end the working thread and tail when you complete the band.

CLASP

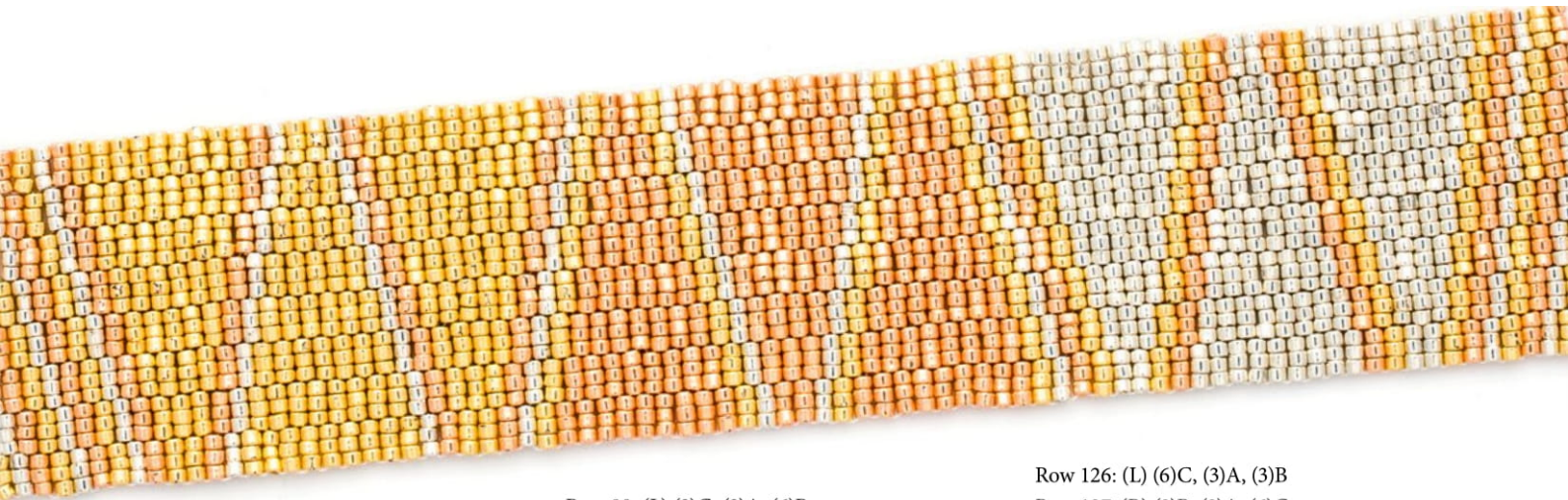
See the Handy-Dandy Guide at FacetJewelry.com for a variety of finishing options; search for “Peyote pattern finishing techniques.” Choose the best clasp option that works for you.

WORD CHART

Row 1&2: (L) (6)A, (6)B, (6)C, (6)A
Row 3: (R) (3)B, (3)A, (3)C, (3)B
Row 4: (L) (3)B, (3)C, (3)A, (3)B
Row 5: (R) (3)C, (3)B, (3)A, (3)C
Row 6: (L) (3)C, (3)A, (3)B, (3)C
Row 7: (R) (3)A, (3)C, (3)B, (3)A
Row 8: (L) (3)A, (3)B, (3)C, (3)A
Row 9: (R) (3)B, (3)A, (3)C, (3)B
Row 10: (L) (3)B, (3)C, (3)A, (3)B
Row 11: (R) (3)C, (3)B, (3)A, (3)C
Row 12: (L) (3)C, (3)A, (3)B, (3)C
Row 13: (R) (3)A, (3)C, (3)B, (3)A
Row 14: (L) (3)A, (3)B, (3)C, (3)A
Row 15: (R) (6)A, (3)C, (3)B
Row 16: (L) (3)B, (3)C, (6)A
Row 17: (R) (9)A, (3)C
Row 18: (L) (3)C, (9)A
Row 19: (R) (12)A
Row 20: (L) (12)A
Row 21: (R) (12)A
Row 22: (L) (12)A
Row 23: (R) (12)A
Row 24: (L) (3)C, (9)A
Row 25: (R) (9)A, (3)C
Row 26: (L) (3)B, (3)C, (6)A
Row 27: (R) (6)A, (3)C, (3)B
Row 28: (L) (3)A, (3)B, (3)C, (3)A
Row 29: (R) (3)A, (3)C, (3)B, (3)A
Row 30: (L) (6)A, (3)B, (3)C
Row 31: (R) (3)C, (3)B, (6)A
Row 32: (L) (9)A, (3)B
Row 33: (R) (3)B, (9)A
Row 34: (L) (12)A
Row 35: (R) (12)A



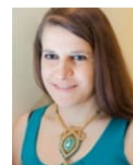
PATTERN



Row 36: (L) (12)A
Row 37: (R) (12)A
Row 38: (L) (12)A
Row 39: (R) (3)B, (9)A
Row 40: (L) (9)A, (3)B
Row 41: (R) (3)C, (3)B, (6)A
Row 42: (L) (6)A, (3)B, (3)C
Row 43: (R) (3)A, (3)C, (3)B, (3)A
Row 44: (L) (3)A, (3)B, (3)C, (3)A
Row 45: (R) (6)A, (3)C, (3)B
Row 46: (L) (3)B, (3)C, (6)A
Row 47: (R) (9)A, (3)C
Row 48: (L) (3)C, (9)A
Row 49: (R) (12)A
Row 50: (L) (12)A
Row 51: (R) (12)A
Row 52: (L) (12)A
Row 53: (R) (12)A
Row 54: (L) (3)C, (9)A
Row 55: (R) (9)A, (3)C
Row 56: (L) (3)B, (3)C, (6)A
Row 57: (R) (6)A, (3)C, (3)B
Row 58: (L) (3)A, (3)B, (3)C, (3)A
Row 59: (R) (3)A, (3)C, (3)B, (3)A
Row 60: (L) (3)C, (3)A, (3)B, (3)C
Row 61: (R) (3)C, (3)B, (3)A, (3)C
Row 62: (L) (3)B, (3)C, (3)A, (3)B
Row 63: (R) (3)B, (3)A, (3)C, (3)B
Row 64: (L) (6)B, (3)C, (3)A
Row 65: (R) (3)A, (3)C, (6)B
Row 66: (L) (9)B, (3)C
Row 67: (R) (3)C, (9)B
Row 68: (L) (12)B
Row 69: (R) (12)B
Row 70: (L) (12)B
Row 71: (R) (12)B
Row 72: (L) (12)B
Row 73: (R) (3)C, (9)B
Row 74: (L) (9)B, (3)C
Row 75: (R) (3)A, (3)C, (6)B
Row 76: (L) (6)B, (3)C, (3)A
Row 77: (R) (3)B, (3)A, (3)C, (3)B
Row 78: (L) (3)B, (3)C, (3)A, (3)B
Row 79: (R) (6)B, (3)A, (3)C

Row 80: (L) (3)C, (3)A, (6)B
Row 81: (R) (9)B, (3)A
Row 82: (L) (3)A, (9)B
Row 83: (R) (12)B
Row 84: (L) (12)B
Row 85: (R) (12)B
Row 86: (L) (12)B
Row 87: (R) (12)B
Row 88: (L) (3)A, (9)B
Row 89: (R) (9)B, (3)A
Row 90: (L) (3)C, (3)A, (6)B
Row 91: (R) (6)B, (3)A, (3)C
Row 92: (L) (3)B, (3)C, (3)A, (3)B
Row 93: (R) (3)B, (3)A, (3)C, (3)B
Row 94: (L) (6)B, (3)C, (3)A
Row 95: (R) (3)A, (3)C, (6)B
Row 96: (L) (9)B, (3)C
Row 97: (R) (3)C, (9)B
Row 98: (L) (12)B
Row 99: (R) (12)B
Row 100: (L) (12)B
Row 101: (R) (12)B
Row 102: (L) (12)B
Row 103: (R) (3)C, (9)B
Row 104: (L) (9)B, (3)C
Row 105: (R) (3)A, (3)C, (6)B
Row 106: (L) (6)B, (3)C, (3)A
Row 107: (R) (3)B, (3)A, (3)C, (3)B
Row 108: (L) (3)B, (3)C, (3)A, (3)B
Row 109: (R) (3)C, (3)B, (3)A, (3)C
Row 110: (L) (3)C, (3)A, (3)B, (3)C
Row 111: (R) (6)C, (3)B, (3)A
Row 112: (L) (3)A, (3)B, (6)C
Row 113: (R) (9)C, (3)B
Row 114: (L) (3)B, (9)C
Row 115: (R) (12)C
Row 116: (L) (12)C
Row 117: (R) (12)C
Row 118: (L) (12)C
Row 119: (R) (12)C
Row 120: (L) (3)B, (9)C
Row 121: (R) (9)C, (3)B
Row 122: (L) (3)A, (3)B, (6)C
Row 123: (R) (6)C, (3)B, (3)A
Row 124: (L) (3)C, (3)A, (3)B, (3)C
Row 125: (R) (3)C, (3)B, (3)A, (3)C

Row 126: (L) (6)C, (3)A, (3)B
Row 127: (R) (3)B, (3)A, (6)C
Row 128: (L) (9)C, (3)A
Row 129: (R) (3)A, (9)C
Row 130: (L) (12)C
Row 131: (R) (12)C
Row 132: (L) (12)C
Row 133: (R) (12)C
Row 134: (L) (12)C
Row 135: (R) (3)A, (9)C
Row 136: (L) (9)C, (3)A
Row 137: (R) (3)B, (3)A, (6)C
Row 138: (L) (6)C, (3)A, (3)B
Row 139: (R) (3)C, (3)B, (3)A, (3)C
Row 140: (L) (3)C, (3)A, (3)B, (3)C
Row 141: (R) (6)C, (3)B, (3)A
Row 142: (L) (3)A, (3)B, (6)C
Row 143: (R) (9)C, (3)B
Row 144: (L) (3)B, (9)C
Row 145: (R) (12)C
Row 146: (L) (12)C
Row 147: (R) (12)C
Row 148: (L) (12)C
Row 149: (R) (12)C
Row 150: (L) (3)B, (9)C
Row 151: (R) (9)C, (3)B
Row 152: (L) (3)A, (3)B, (6)C
Row 153: (R) (6)C, (3)B, (3)A
Row 154: (L) (3)C, (3)A, (3)B, (3)C
Row 155: (R) (3)C, (3)B, (3)A, (3)C
Row 156: (L) (3)B, (3)C, (3)A, (3)B
Row 157: (R) (3)B, (3)A, (3)C, (3)B
Row 158: (L) (3)A, (3)B, (3)C, (3)A
Row 159: (R) (3)A, (3)C, (3)B, (3)A
Row 160: (L) (3)C, (3)A, (3)B, (3)C
Row 161: (R) (3)C, (3)B, (3)A, (3)C
Row 162: (L) (3)B, (3)C, (3)A, (3)B
Row 163: (R) (3)B, (3)A, (3)C, (3)B
Row 164: (L) (3)A, (3)B, (3)C, (3)A
Row 165: (R) (3)A, (3)C, (3)B, (3)A
Row 166: (L) (3)C, (3)A, (3)B, (3)C **B**



Natalia Savastano

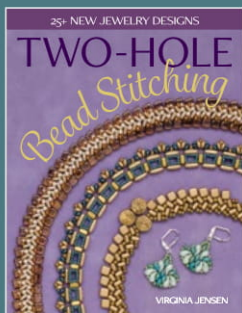
info@nataliasavastano.com
nataliasavastano.com
nataliasavastanoart.etsy.com

BOOK EXCERPT

by Virginia Jensen

DIFFICULTY ●●○○○

bead weaving



Create unique, geometric pieces with experienced designer and teacher Virginia Jensen in her latest book featuring 25+ two-hole bead designs. Wearable earrings, bracelets, and necklaces are made with a variety of beads, including tiles, bricks, ZoliDuos, SuperDuos, QuadraLentils, and more. Virginia's clear illustrations and color photos guide the adventurous beginner through each project. *Two-Hole Bead Stitching* is available at JewelryAndBeadingStore.com

Buds & Studs

BRACELET AND NECKLACE



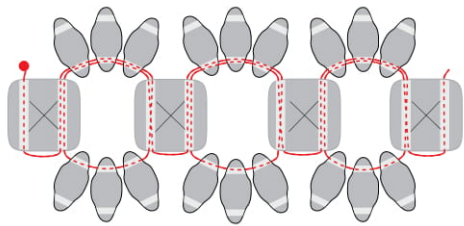


FIG. 1

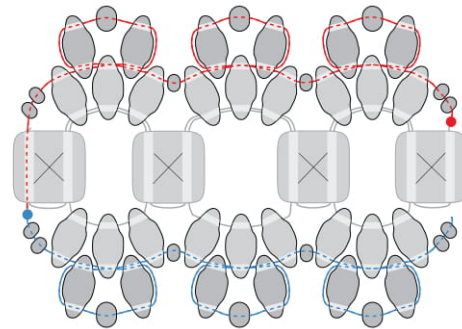


FIG. 2

A delicate color combination makes a lovely pattern with little flower buds seeming to extend along both sides. This design could also work in bright, flowery colors.

supplies

- 17 8mm two-hole pyramid stud beads
- 150 SuperDuo beads (90 color A, 60 color B)
- 1g 8^o seed beads
- 1g 11^o seed beads
- 1 toggle clasp
- #10 or #11 beading needle
- 10 lb. test Power Pro or similar thread

note

Make sure the studs are facing forward.

Make the Bracelet

1 [FIG. 1, red thread] Thread a needle on a comfortable length of thread. Pick up a pyramid stud bead, turn, and sew through the other hole of the same stud. Pick up three SuperDuo beads, a stud, and three SuperDuos. * Working in the same direction, sew through the first stud, the same holes of the SuperDuos, and the second stud. Turn and sew through the other hole of the second stud. Pick up three SuperDuos, a stud, and three SuperDuos. Repeat from * until you reach the desired length, ending by exiting a stud (second hole).

2 [FIG. 2, red thread] Pick up two 11^o seed beads, and sew through the empty hole of the nearest SuperDuo. * Pick up a new SuperDuo, and sew through the empty hole of the second SuperDuo. Pick up another new SuperDuo, turn, and sew through the empty hole of the SuperDuo you are exiting in the other direction. Pull the SuperDuo up against the work. Pick up an 8^o seed bead, and sew back through the empty hole of the other new SuperDuo. Turn again, and sew through the lower hole of the new SuperDuo you are exiting, the upper hole of the middle SuperDuo below, and the lower hole of the other new SuperDuo. Continue through the upper hole of the third SuperDuo. Pick up an 11^o, and sew through the empty hole of the first SuperDuo of the next triple group. Repeat from * until you finish the side. Pick up two 11^os, and cross to the other side of the bracelet. **[FIG. 2, blue thread]** Repeat on the other side.

3 To attach a clasp, exit a pair of 11^os at one end, and pick up four 11^os and half of the clasp. Sew back through all six 11^os and into the beadwork. Repeat on the other side, sewing through the same clasp half. Repeat on the other end with the other clasp half. End the threads.

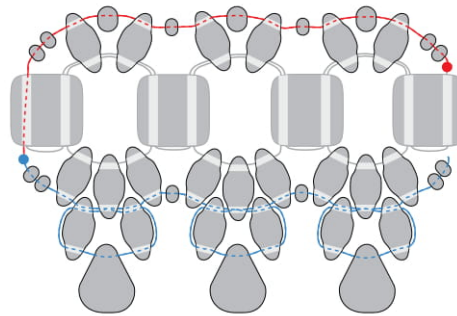


FIG. 3

additional supplies

- 17 12mm drop beads
- 8° seed beads plus beads desired for stringing

note

Substitute tile beads for the pyramid stud beads in this necklace.

Create a Necklace

Making the bracelet curve into a necklace requires only a few small changes. This piece can be as long as you like—a full collar, or just a front section. As a necklace, the same technique takes on an Egyptian look. Go dramatic with deep red or black, or go elegant with black and silver.

1 [FIG. 3, red thread] Refer to the illustration to make a base similar to the bracelet, but on the top row, pick up only two SuperDuos. Make the bottom the same as the bracelet. Finish the top as shown, making sure you don't pull the thread so tight that it warps the piece.

2 [FIG. 3, blue thread] Make the bottom of the necklace in the same way you completed the bracelet, substituting drop beads for the 8°s. Check the curve as you go, and add or subtract beads if the piece curves too sharply for your neck size. To finish, exit the top pair of 11°s on one side, and string your desired pattern. Pick up half of the clasp, and sew back through the beadwork. End the threads.

Options

Use a square, Rullas, bricks, or even a box of cubes in the center instead of a tile bead. You can also replace the drop at the tip with a number of other beads, such as rounds, rizados, and even daggers for a more dramatic effect.