



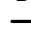
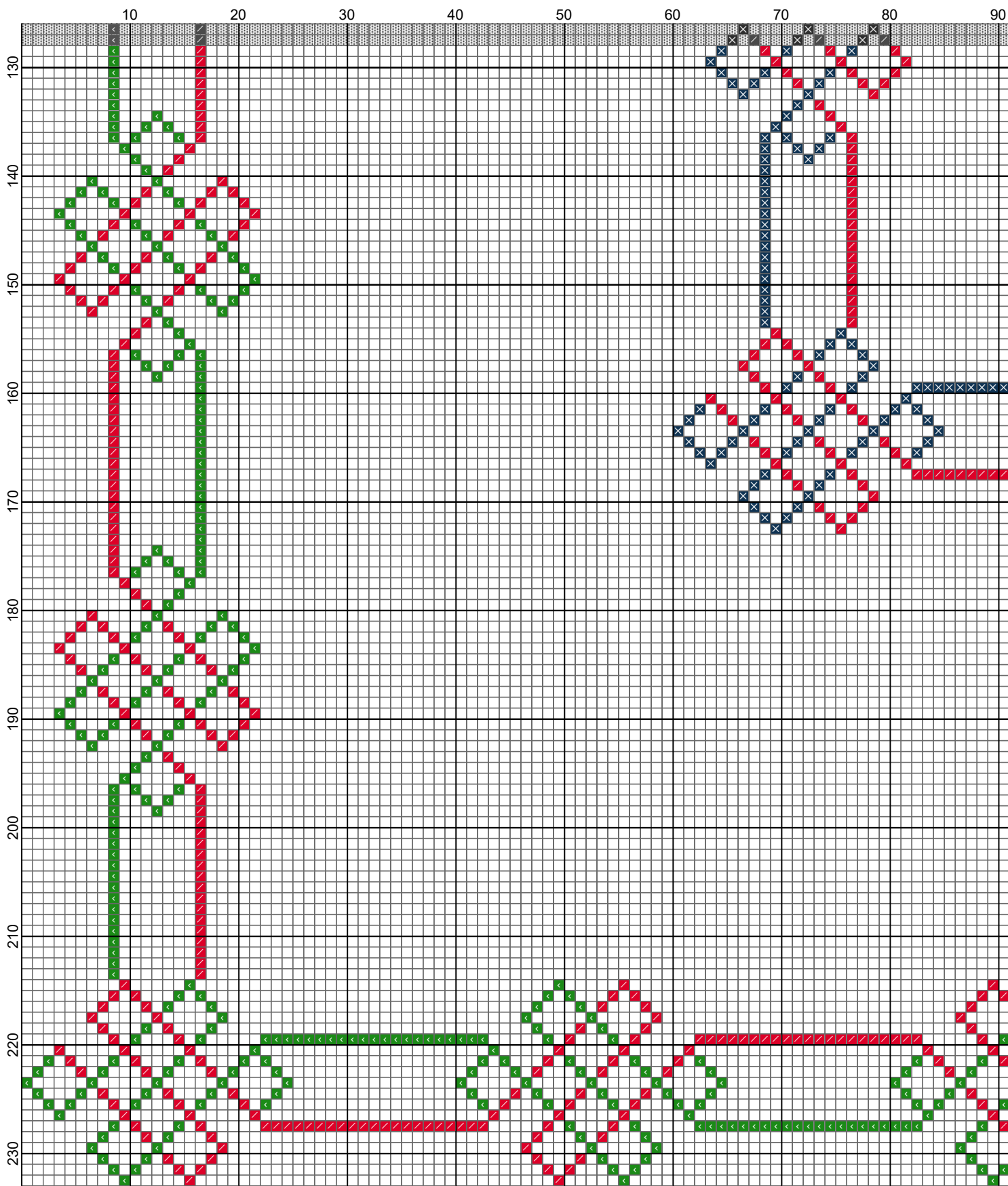


Legend:

-  DMC-666
-  DMC-3755
-  DMC-336
-  DMC-701

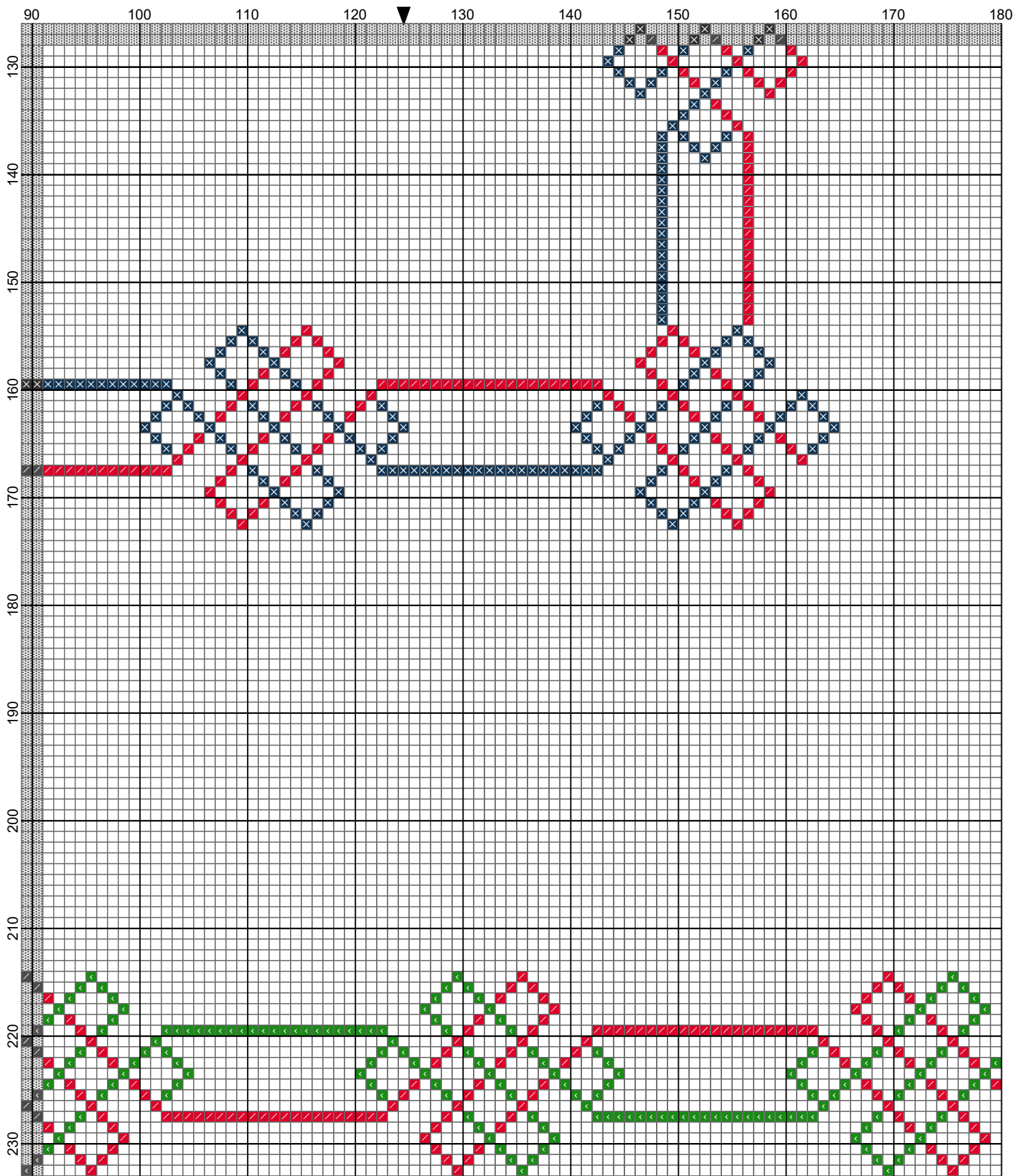
Backstitches:

-  DMC-310



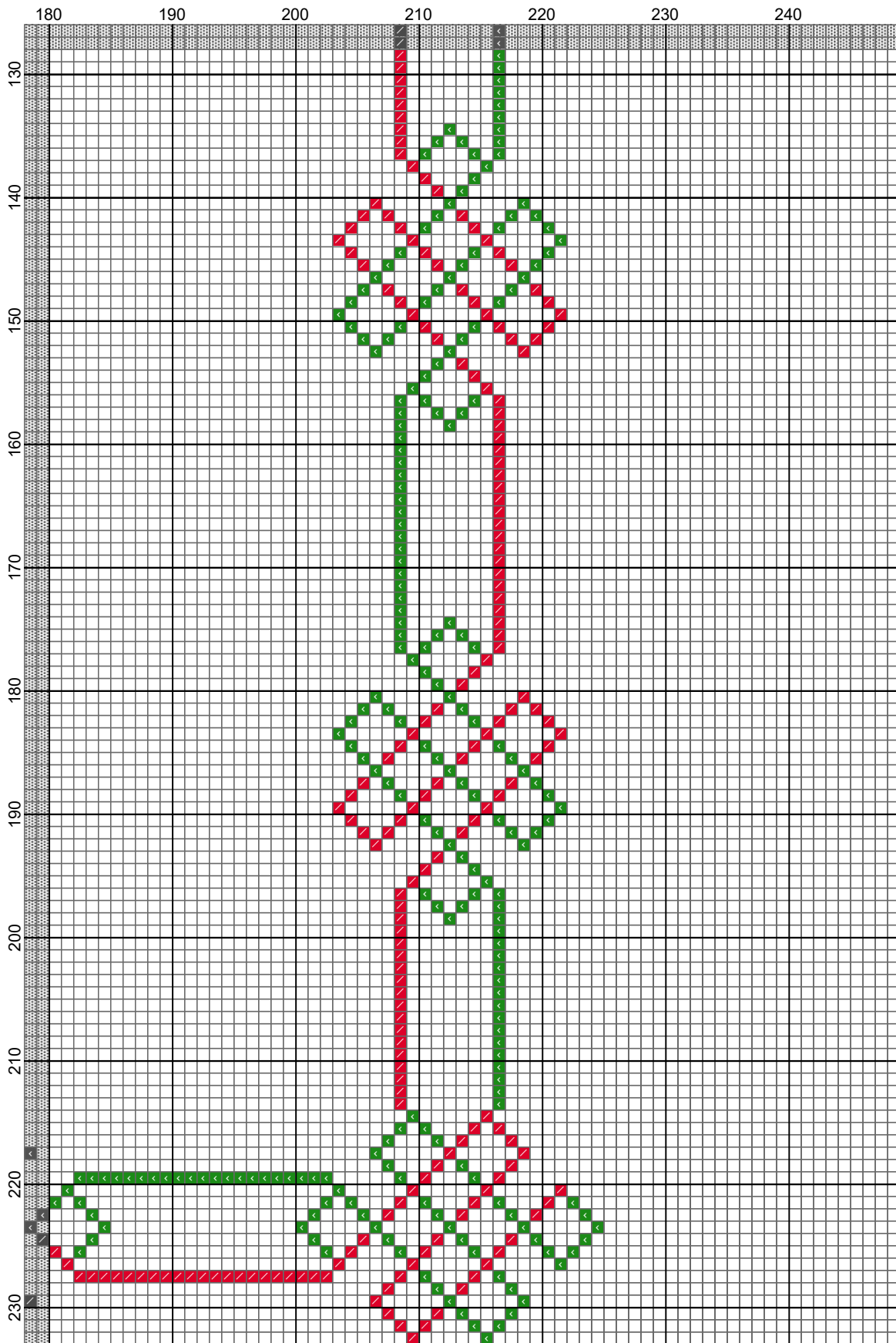
Non solo Punto Croce di Natalia©, Licensed to:

DMC Pattern Pieces



Non solo Punto Croce di Natalia© , Licensed to:

DMC Pattern Pleces








Non solo Punto Croce di Natalia© , Licensed to: DMC Pattern Pieces

Greca, rombi

Author: Natalia
Copyright: Non solo Punto Croce di Natalia©
Website: <https://www.liveinternet.ru/users/nata007/rubric/1518726/>
Grid Size: 249W x 233H
Design Area: 17,79" x 16,64" (249 x 233 stitches)

NON SOLO
PUNTO CROCE
di Natalia

Legend:

  [2] DMC 666 Bright red (1634 stitches, 0,7 skeins)	 [2] DMC 336 navy blue (909 stitches, 0,4 skeins)
 [2] DMC 3755 baby blue (429 stitches, 0,2 skeins)	 [2] DMC 701 christmas green - It (1384 stitches, 0,6 skeins)

Backstitch Lines:

 DMC-310 black (14,44 inches, 0,1 skeins)