



www.goldenkite.com

1079 A Still Life with Roses on a Ledge



This pattern may not be copied, sold or in any other way handled in any way that violates the international copyright laws. If you get hold of this pattern (and or this document) in any other way than via a direct download from www.goldenkite.com or via a mail from us, you should report that to us at legal_actions@goldenkite.com .

Copyright (c) 2007-, Golden Kite. All rights reserved.

Instructions

Thank you for choosing Golden Kite products!
We hope you will have lots of fun with this cross-stitch pattern!

Fabric

Press the fabric with an iron if needed. A good thing to prevent the fabric from fraying is to machine zigzag the edges.

On large patterns, it is easiest to start from the upper left corner of the design. Make sure you have the proper margins before starting and that the fabric piece is of the correct size. The best way to verify this is to count all stitch positions on the fabric from the upper left corner downwards and to the right to make sure there is enough space for the design.

Some prefer to start in the center of the design instead. To locate the center of the fabric, fold the fabric in half both vertically and horizontally. The center is located where these two folds meet.

Stitches

Each length of DMC tread consists of six strands.
Use two of these strands for all stitches.

Note that some colors may be mixes (or blends) between two different pure colors. In that case take one strand of the two colors each and thread the two strands into the needle at the same time for stitching.

All stitches are full cross-stitches. No half-stitching and no back-stitching is necessary in this pattern.

All cross-stitches will be worked into the holes in the fabric from left to right. Always use the larger holes in the fabric for the stitches. Adjacent stitches should meet in the same hole. Make sure all stitches cross in the same direction.

Please be careful when washing the finished embroidery! The cotton thread may bleed when washed. Only hand wash it in lukewarm water. Remove excess water by roll it in a towel and lay it flat to air dry. Natural fabrics may shrink slightly when washed. We do not recommend washing the embroidery if not absolutely necessary and we take no responsibility for any damage that may occur.

When you start using this product you agree that Golden Kite (Golden K), or any people working for or in association with Golden Kite (Golden K), cannot be set responsible for any physical, mental, economical or other type of damage caused by this product (including this document, pattern, threads, needles and any other parts received by you from Golden Kite (Golden K)).

This pattern may not be copied, sold or in any other way handled in any way that violates the international copyright laws. If you get hold of this pattern (and or this document) in any other way than via a direct download from www.goldenkite.com or via a mail from us, you should report that to us at legal_actions@goldenkite.com .

A Still Life with Roses on a Ledge

Stitch Count		Recommended Fabric Color	
Horizontal:	200	Antique White	
Vertical:	196		

This table tells the size of the pattern (without any margins) and the size of the fabric required to stitch the pattern (including recommended margins). 3 inch margins have been added on each side in the 'Including Margins' row.

The sizes are given for 14, 16 and 18 stitches per inch fabrics.

Make sure to use the 'Including Margins' row when cutting the piece of fabric to be used. Also make sure that 3 inch margins are enough for your stitching technique and add more margin areas if necessary.

	14				16				18			
	Width		Height		Width		Height		Width		Height	
	cm	inch	cm	inch	cm	inch	cm	inch	cm	inch	cm	inch
Pattern:	36	14.14	36	13.98	32	12.37	32	12.23	28	11	28	10.875
Including Margins:	52	21	52	20	48	19	48	19	44	18	44	17
	10				12				24			
	Width		Height		Width		Height		Width		Height	
	cm	inch	cm	inch	cm	inch	cm	inch	cm	inch	cm	inch
Pattern:	50	19.79	50	19.57	42	16.49	42	16.31	21	8.24	21	8.15
Including Margins:	66	26	66	26	58	23	58	23	37	15	37	15
	25				26				27			
	Width		Height		Width		Height		Width		Height	
	cm	inch	cm	inch	cm	inch	cm	inch	cm	inch	cm	inch
Pattern:	20	7.91	20	7.82	19	7.61	19	7.52	18	7.33	18	7.24
Including Margins:	36	14	36	14	35	14	35	14	34	14	34	14
	28				30				32			
	Width		Height		Width		Height		Width		Height	
	cm	inch	cm	inch	cm	inch	cm	inch	cm	inch	cm	inch
Pattern:	18	7.07	18	6.99	16	6.59	16	6.52	15	6.18	15	6.11
Including Margins:	34	14	34	13	32	13	32	13	31	13	31	13

Solid Color Stitches. Use two strands of the specified color for these stitches.

Symbol	DMC	Name
8	224	Shell Pink-VY LT
8	300	Mahogany-VY DK
c	301	Mahogany-MD
/	352	Coral-LT
..	356	Terra Cotta-MD
o	371	Mustard
7	402	Mahogany-VY LT
II	407	Desert Sand-DK
▼	420	Hazelnut Brown-DK
♡	453	Shell Gray-LT
3	524	Fern Green-VY LT
♣	535	Ash Gray-VY LT
▼	610	Drab Brown-DK
⬇	611	Drab Brown
↘	632	Desert Sand-UL VY DK
⊗	642	Beige Gray-DK
:	644	Beige Gray-MD
⋈	645	Beaver Gray-VY DK
×	647	Beaver Gray-MD
1	712	Cream
H	729	Old Gold-MD
↙	730	Olive Green-VY DK
●	732	Olive Green
√	734	Olive Green-LT
+	738	Tan-VY LT
o	739	Tan-UL VY LT
(754	Peach-LT
5	758	Terra Cotta-VY LT
· ·	760	Salmon
m	822	Beige Gray-LT
⬆	830	Golden Olive-DK
⊞	832	Golden Olive
..	833	Golden Olive-LT
4	834	Golden Olive-VY LT
●	898	Coffee Brown-VY DK

=	900	Burnt Orange-DK
▲	920	Copper-MD
✕	921	Copper
↓	922	Copper-LT
■	934	Black Avocado Green
●	935	Avocado Green-DK
✕	936	Avocado Green-VY DK
■	938	Coffee Brown-UL DK
n	948	Peach-VY LT
.	950	Desert Sand-LT
o	951	Tawny-LT
g	975	Golden Brown-DK
●	3011	Khaki Green-DK
⊕	3012	Khaki Green-MD
●	3021	Brown Gray-VY DK
*	3022	Brown Gray-MD
⋈	3023	Brown Gray-LT
\$	3032	Mocha Brown-MD
⊗	3041	Antique Violet-MD
III	3045	Yellow Beige-DK
↑	3051	Green Gray-DK
⊗	3052	Green Gray-MD
田	3064	Desert Sand
←	3362	Pine Green-DK
#	3364	Pine Green
★	3772	Desert Sand-VY DK
^	3774	Desert Sand-VY LT
Σ	3776	Mahogany-LT
##	3778	Terra Cotta-LT
o	3779	Terra Cotta-UL VY LT
⊗	3787	Brown Gray-DK
⊞	3790	Beige Gray-UL DK
@	3828	Hazelnut Brown
↙	3829	Old Gold-VY DK
∞	3855	Autumn Gold-LT
)	3856	Mahogany-UL VY LT
⊞	3862	Mocha Beige-DK
-	3864	Mocha Beige-LT

Blend Stitches. Use one strand of each of DMC1 and DMC2 for these stitches.

Symbol	DMC1	Name1	DMC2	Name2
◀	301	Mahogany-MD	420	Hazelnut Brown-DK
⊕	356	Terra Cotta-MD	3828	Hazelnut Brown
✱	420	Hazelnut Brown-DK	975	Golden Brown-DK
⊕	3787	Brown Gray -DK	3790	Beige Gray-UL DK
⦿	520	Fern Green-DK	3021	Brown Gray-VY DK
◆	3021	Brown Gray-VY DK	3051	Green Gray-DK
✱	611	Drab Brown	3862	Mocha Beige-DK
◐	611	Drab Brown	3011	Khaki Green-DK
◑	3011	Khaki Green-DK	3787	Brown Gray -DK
✱	3346	Hunter Green	3790	Beige Gray-UL DK
♠	920	Copper-MD	921	Copper
◊	402	Mahogany-VY LT	3778	Terra Cotta-LT
✱	642	Beige Gray-DK	3022	Brown Gray -MD
◊	758	Terra Cotta-VY LT	3856	Mahogany-UL VY LT
↑	402	Mahogany-VY LT	407	Desert Sand-DK
◻	611	Drab Brown	3787	Brown Gray -DK
//	611	Drab Brown	3052	Green Gray-MD
▲	611	Drab Brown	3790	Beige Gray-UL DK
◻	356	Terra Cotta-MD	3778	Terra Cotta-LT
◊	352	Coral-LT	758	Terra Cotta-VY LT
◻	900	Burnt Orange-DK	920	Copper-MD
⊕	3012	Khaki Green-MD	3364	Pine Green
«	712	Cream	822	Beige Gray-LT
⊕	739	Tan-UL VY LT	644	Beige Gray-MD
✱	420	Hazelnut Brown-DK	371	Mustard
◻	3346	Hunter Green	3011	Khaki Green-DK
➔	730	Olive Green-VY DK	975	Golden Brown-DK
⦿	730	Olive Green-VY DK	732	Olive Green
✱	900	Burnt Orange-DK	356	Terra Cotta-MD
♥	3021	Brown Gray-VY DK	936	Avocado Green-VY DK
+	3011	Khaki Green-DK	3862	Mocha Beige-DK
↓	3011	Khaki Green-DK	3051	Green Gray-DK
✱	829	Golden Olive-VY DK	730	Olive Green-VY DK
☛	730	Olive Green-VY DK	898	Coffee Brown-VY DK
▲	301	Mahogany-MD	3776	Mahogany-LT
✱	900	Burnt Orange-DK	921	Copper
▲	402	Mahogany-VY LT	356	Terra Cotta-MD
✱	645	Beaver Gray-VY DK	3022	Brown Gray -MD
☛	898	Coffee Brown-VY DK	936	Avocado Green-VY DK
✱	611	Drab Brown	3346	Hunter Green
☾	301	Mahogany-MD	356	Terra Cotta-MD
⦿	3787	Brown Gray -DK	3051	Green Gray-DK
♣	3011	Khaki Green-DK	829	Golden Olive-VY DK
▲	975	Golden Brown-DK	732	Olive Green
✱	732	Olive Green	611	Drab Brown
♣	732	Olive Green	832	Golden Olive
◊	402	Mahogany-VY LT	729	Old Gold-MD
✱	611	Drab Brown	3046	Yellow Beige-MD
☛	830	Golden Olive-DK	898	Coffee Brown-VY DK
☆	730	Olive Green-VY DK	936	Avocado Green-VY DK
◊	732	Olive Green	3012	Khaki Green-MD
◻	610	Drab Brown-DK	3011	Khaki Green-DK
✱	420	Hazelnut Brown-DK	732	Olive Green

Copyright (c) 2007-, Golden Kite (Golden K.)

Internet: www.goldenkite.com

e-mail: info@goldenkite.com

⚙	371	Mustard	3012	Khaki Green-MD
⚙	3346	Hunter Green	730	Olive Green-VY DK
⚙	900	Burnt Orange-DK	3776	Mahogany-LT
⚙	921	Copper	3776	Mahogany-LT
⚙	402	Mahogany-VY LT	922	Copper-LT
⚙	402	Mahogany-VY LT	900	Burnt Orange-DK
⚙	951	Tawny-LT	822	Beige Gray-LT
⚙	3864	Mocha Beige-LT	758	Terra Cotta-VY LT
L	900	Burnt Orange-DK	922	Copper-LT
o	3012	Khaki Green-MD	730	Olive Green-VY DK

This table specifies how much thread of each color is required to stitch this pattern. It is good to know that one complete DMC skein contains 313 inches (795 cm) thread.

DMC	Name	Usage (cm)	Usage (inch)	Usage (cm)	Usage (inch)	Usage (cm)	Usage (inch)
		14		16		18	
224	Shell Pink-VY LT	16	6	15	5	14	5
300	Mahogany-VY DK	17	6	16	6	14	5
301	Mahogany-MD	58	22	55	21	50	19
352	Coral-LT	33	12	31	12	28	11
356	Terra Cotta-MD	118	46	112	44	101	39
371	Mustard	76	29	73	28	65	25
402	Mahogany-VY LT	204	80	194	76	175	68
407	Desert Sand-DK	55	21	52	20	47	18
420	Hazelnut Brown-DK	98	38	93	36	84	33
453	Shell Gray-LT	7	2	7	2	6	2
520	Fern Green-DK	43	16	41	16	37	14
524	Fern Green-VY LT	40	15	38	14	34	13
535	Ash Gray-VY LT	20	7	19	7	17	6
610	Drab Brown-DK	155	61	147	57	133	52
611	Drab Brown	876	344	834	328	750	295
632	Desert Sand-UL VY DK	11	4	11	4	9	3
642	Beige Gray-DK	225	88	214	84	192	75
644	Beige Gray-MD	60	23	57	22	51	20
645	Beaver Gray-VY DK	79	31	75	29	68	26
647	Beaver Gray-MD	145	57	138	54	124	48
712	Cream	62	24	59	23	53	20
729	Old Gold-MD	11	4	11	4	10	3
730	Olive Green-VY DK	670	263	639	251	575	226
732	Olive Green	381	150	363	142	327	128
734	Olive Green-LT	22	8	21	8	19	7
738	Tan-VY LT	43	16	41	16	37	14
739	Tan-UL VY LT	98	38	93	36	84	33
754	Peach-LT	72	28	68	26	61	24
758	Terra Cotta-VY LT	166	65	158	62	142	55
760	Salmon	3	1	2	1	2	1
822	Beige Gray-LT	202	79	192	75	173	68
829	Golden Olive-VY DK	114	44	108	42	97	38
830	Golden Olive-DK	163	64	155	61	139	54
832	Golden Olive	40	15	38	14	34	13
833	Golden Olive-LT	28	11	27	10	24	9
834	Golden Olive-VY LT	15	5	15	5	13	5
898	Coffee Brown-VY DK	318	125	303	119	272	107
900	Burnt Orange-DK	66	25	62	24	56	22
920	Copper-MD	31	12	29	11	26	10
921	Copper	52	20	49	19	44	17
922	Copper-LT	22	8	21	8	18	7
934	Black Avocado Green	481	189	458	180	412	162
935	Avocado Green-DK	350	137	333	131	300	118
936	Avocado Green-VY DK	384	151	366	144	329	129
938	Coffee Brown-UL DK	198	77	189	74	170	66
948	Peach-VY LT	40	15	38	14	34	13
950	Desert Sand-LT	67	26	64	25	58	22
951	Tawny-LT	127	50	121	47	109	42
975	Golden Brown-DK	81	31	77	30	69	27
3011	Khaki Green-DK	1333	524	1269	499	1142	449
3012	Khaki Green-MD	419	164	399	157	359	141
3021	Brown Gray-VY DK	186	73	177	69	159	62
3022	Brown Gray-MD	279	109	266	104	239	94
3023	Brown Gray-LT	123	48	117	46	105	41

Copyright (c) 2007-, Golden Kite (Golden K.)

Internet: www.goldenkite.com

e-mail: info@goldenkite.com

3032	Mocha Brown-MD	54	21	52	20	46	18
3041	Antique Violet-MD	4	1	4	1	3	1
3045	Yellow Beige-DK	13	5	12	4	11	4
3046	Yellow Beige-MD	26	10	25	9	23	9
3051	Green Gray-DK	300	118	286	112	257	101
3052	Green Gray-MD	98	38	93	36	84	33
3064	Desert Sand	21	8	20	7	18	7
3346	Hunter Green	170	66	162	63	146	57
3362	Pine Green-DK	16	6	15	5	14	5
3364	Pine Green	58	22	55	21	49	19
3772	Desert Sand-VY DK	13	5	12	4	11	4
3774	Desert Sand-VY LT	79	31	76	29	68	26
3776	Mahogany-LT	72	28	68	26	62	24
3778	Terra Cotta-LT	55	21	52	20	47	18
3779	Terra Cotta-UL VY LT	58	22	55	21	50	19
3787	Brown Gray -DK	355	139	338	133	304	119
3790	Beige Gray-UL DK	168	66	160	62	144	56
3828	Hazelnut Brown	31	12	29	11	26	10
3829	Old Gold-VY DK	6	2	6	2	5	1
3855	Autumn Gold-LT	5	1	4	1	4	1
3856	Mahogany-UL VY LT	73	28	70	27	63	24
3862	Mocha Beige-DK	298	117	283	111	255	100
3864	Mocha Beige-LT	72	28	68	26	62	24

Extended thread usage table.							
DMC	Name	Usage (cm)	Usage (inch)	Usage (cm)	Usage (inch)	Usage (cm)	Usage (inch)
		10		12		24	
224	Shell Pink-VY LT	25	9	21	8	11	4
300	Mahogany-VY DK	25	9	21	8	11	4
301	Mahogany-MD	90	34	75	29	38	14
352	Coral-LT	50	20	42	17	21	8
356	Terra Cotta-MD	182	70	152	59	76	29
371	Mustard	117	45	98	38	49	19
402	Mahogany-VY LT	315	122	263	102	131	51
407	Desert Sand-DK	85	32	71	27	35	14
420	Hazelnut Brown-DK	151	59	126	50	63	25
453	Shell Gray-LT	11	4	9	3	5	2
520	Fern Green-DK	67	25	56	21	28	11
524	Fern Green-VY LT	61	23	51	20	26	10
535	Ash Gray-VY LT	31	11	26	9	13	5
610	Drab Brown-DK	239	94	200	78	100	39
611	Drab Brown	1350	531	1125	443	563	221
632	Desert Sand-UL VY DK	16	5	14	5	7	2
642	Beige Gray-DK	346	135	288	113	144	56
644	Beige Gray-MD	92	36	77	30	38	15
645	Beaver Gray-VY DK	122	47	102	39	51	20
647	Beaver Gray-MD	223	86	186	72	93	36
712	Cream	95	36	80	30	40	15
729	Old Gold- MD	18	5	15	5	8	2
730	Olive Green-VY DK	1035	407	863	339	431	170
732	Olive Green	589	230	491	192	245	96
734	Olive Green-LT	34	13	29	11	14	5
738	Tan-VY LT	67	25	56	21	28	11
739	Tan-UL VY LT	151	59	126	50	63	25
754	Peach-LT	110	43	92	36	46	18
758	Terra Cotta-VY LT	256	99	213	83	107	41

760	Salmon	4	2	3	2	2	1
822	Beige Gray-LT	311	122	260	102	130	51
829	Golden Olive-VY DK	175	68	146	57	73	29
830	Golden Olive-DK	250	97	209	81	104	41
832	Golden Olive	61	23	51	20	26	10
833	Golden Olive-LT	43	16	36	14	18	7
834	Golden Olive-VY LT	23	9	20	8	10	4
898	Coffee Brown-VY DK	490	193	408	161	204	80
900	Burnt Orange-DK	101	40	84	33	42	17
920	Copper-MD	47	18	39	15	20	8
921	Copper	79	31	66	26	33	13
922	Copper-LT	32	13	27	11	14	5
934	Black Avocado Green	742	292	618	243	309	122
935	Avocado Green-DK	540	212	450	177	225	89
936	Avocado Green-VY DK	592	232	494	194	247	97
938	Coffee Brown-UL DK	306	119	255	99	128	50
948	Peach-VY LT	61	23	51	20	26	10
950	Desert Sand-LT	104	40	87	33	44	17
951	Tawny -LT	196	76	164	63	82	32
975	Golden Brown-DK	124	49	104	41	52	20
3011	Khaki Green-DK	2056	808	1713	674	857	337
3012	Khaki Green-MD	646	254	539	212	269	106
3021	Brown Gray -VY DK	286	112	239	93	119	47
3022	Brown Gray -MD	430	169	359	141	179	71
3023	Brown Gray -LT	189	74	158	62	79	31
3032	Mocha Brown-MD	83	32	69	27	35	14
3041	Antique Violet-MD	5	2	5	2	2	1
3045	Yellow Beige-DK	20	7	17	6	8	3
3046	Yellow Beige-MD	41	16	35	14	17	7
3051	Green Gray-DK	463	182	386	152	193	76
3052	Green Gray-MD	151	59	126	50	63	25
3064	Desert Sand	32	13	27	11	14	5
3346	Hunter Green	263	103	219	86	110	43
3362	Pine Green-DK	25	9	21	8	11	4
3364	Pine Green	88	34	74	29	37	14
3772	Desert Sand-VY DK	20	7	17	6	8	3
3774	Desert Sand-VY LT	122	47	102	39	51	20
3776	Mahogany-LT	112	43	93	36	47	18
3778	Terra Cotta-LT	85	32	71	27	35	14
3779	Terra Cotta-UL VY LT	90	34	75	29	38	14
3787	Brown Gray -DK	547	214	456	179	228	89
3790	Beige Gray-UL DK	259	101	216	84	108	42
3828	Hazelnut Brown	47	18	39	15	20	8
3829	Old Gold-VY DK	9	2	8	2	4	1
3855	Autumn Gold-LT	7	2	6	2	3	1
3856	Mahogany-UL VY LT	113	43	95	36	47	18
3862	Mocha Beige-DK	459	180	383	150	191	75
3864	Mocha Beige-LT	112	43	93	36	47	18

Extended thread usage table.							
DMC	Name	Usage (cm)	Usage (inch)	Usage (cm)	Usage (inch)	Usage (cm)	Usage (inch)
		25		26		27	
224	Shell Pink-VY LT	10	4	10	3	9	3
300	Mahogany-VY DK	10	4	10	3	9	3
301	Mahogany-MD	36	14	35	13	33	13
352	Coral-LT	20	8	19	8	19	7

356	Terra Cotta-MD	73	28	70	27	67	26
371	Mustard	47	18	45	17	43	17
402	Mahogany-VY LT	126	49	121	47	117	45
407	Desert Sand-DK	34	13	33	12	31	12
420	Hazelnut Brown-DK	60	24	58	23	56	22
453	Shell Gray-LT	4	1	4	1	4	1
520	Fern Green-DK	27	10	26	10	25	9
524	Fern Green-VY LT	24	9	24	9	23	9
535	Ash Gray-VY LT	12	4	12	4	11	4
610	Drab Brown-DK	96	37	92	36	89	35
611	Drab Brown	540	212	519	204	500	197
632	Desert Sand-UL VY DK	6	2	6	2	6	2
642	Beige Gray-DK	138	54	133	52	128	50
644	Beige Gray-MD	37	14	35	14	34	13
645	Beaver Gray-VY DK	49	19	47	18	45	17
647	Beaver Gray-MD	89	35	86	33	83	32
712	Cream	38	14	37	14	35	13
729	Old Gold- MD	7	2	7	2	7	2
730	Olive Green-VY DK	414	163	398	156	383	151
732	Olive Green	235	92	226	89	218	85
734	Olive Green-LT	14	5	13	5	13	5
738	Tan-VY LT	27	10	26	10	25	9
739	Tan-UL VY LT	60	24	58	23	56	22
754	Peach-LT	44	17	42	17	41	16
758	Terra Cotta-VY LT	102	40	98	38	95	37
760	Salmon	1	1	1	1	1	1
822	Beige Gray-LT	125	49	120	47	115	45
829	Golden Olive-VY DK	70	27	67	26	65	25
830	Golden Olive-DK	100	39	96	37	93	36
832	Golden Olive	24	9	24	9	23	9
833	Golden Olive-LT	17	6	17	6	16	6
834	Golden Olive-VY LT	9	4	9	3	9	3
898	Coffee Brown-VY DK	196	77	188	74	181	71
900	Burnt Orange-DK	40	16	39	15	37	15
920	Copper-MD	19	7	18	7	17	7
921	Copper	32	12	30	12	29	11
922	Copper-LT	13	5	12	5	12	5
934	Black Avocado Green	297	117	285	112	275	108
935	Avocado Green-DK	216	85	208	82	200	79
936	Avocado Green-VY DK	237	93	228	89	219	86
938	Coffee Brown-UL DK	122	48	118	46	113	44
948	Peach-VY LT	24	9	24	9	23	9
950	Desert Sand-LT	42	16	40	15	39	15
951	Tawny -LT	78	30	75	29	73	28
975	Golden Brown-DK	50	19	48	19	46	18
3011	Khaki Green-DK	822	323	791	311	761	299
3012	Khaki Green-MD	258	102	249	98	239	94
3021	Brown Gray -VY DK	114	45	110	43	106	41
3022	Brown Gray -MD	172	68	165	65	159	63
3023	Brown Gray -LT	76	30	73	28	70	27
3032	Mocha Brown-MD	33	13	32	12	31	12
3041	Antique Violet-MD	2	1	2	1	2	1
3045	Yellow Beige-DK	8	3	8	3	7	3
3046	Yellow Beige-MD	17	6	16	6	15	6
3051	Green Gray-DK	185	73	178	70	171	67
3052	Green Gray-MD	60	24	58	23	56	22
3064	Desert Sand	13	5	12	5	12	5
3346	Hunter Green	105	41	101	39	97	38
3362	Pine Green-DK	10	4	10	3	9	3

Copyright (c) 2007-, Golden Kite (Golden K.)

Internet: www.goldenkite.com

e-mail: info@goldenkite.com

3364	Pine Green	35	14	34	13	33	13
3772	Desert Sand-VY DK	8	3	8	3	7	3
3774	Desert Sand-VY LT	49	19	47	18	45	17
3776	Mahogany-LT	45	17	43	17	41	16
3778	Terra Cotta-LT	34	13	33	12	31	12
3779	Terra Cotta-UL VY LT	36	14	35	13	33	13
3787	Brown Gray -DK	219	86	210	82	203	79
3790	Beige Gray-UL DK	104	40	100	39	96	37
3828	Hazelnut Brown	19	7	18	7	17	7
3829	Old Gold-VY DK	4	1	3	1	3	1
3855	Autumn Gold-LT	3	1	3	1	3	1
3856	Mahogany-UL VY LT	45	17	44	17	42	16
3862	Mocha Beige-DK	184	72	177	69	170	67
3864	Mocha Beige-LT	45	17	43	17	41	16

Extended thread usage table.

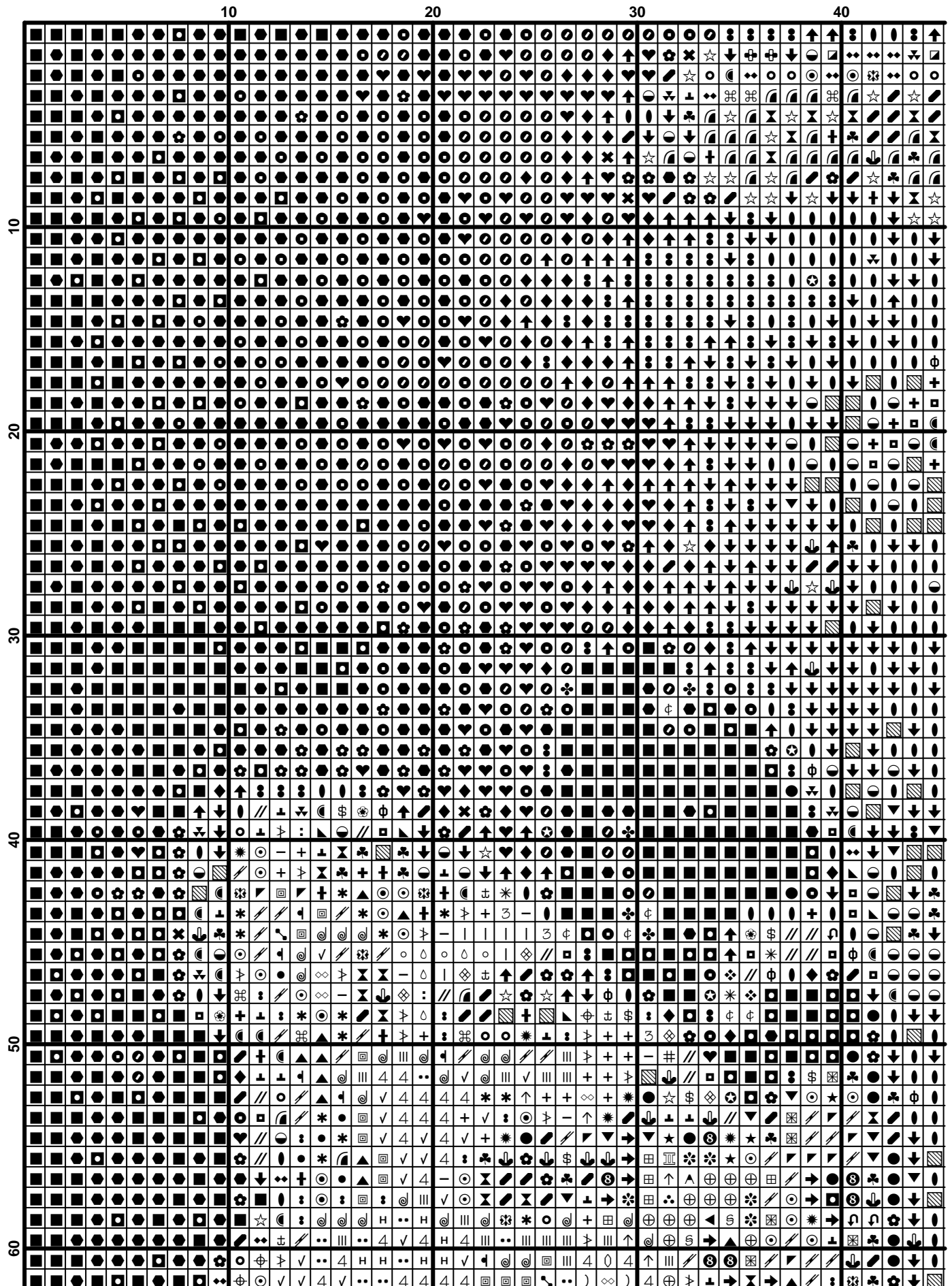
DMC	Name	Usage (cm)	Usage (inch)	Usage (cm)	Usage (inch)	Usage (cm)	Usage (inch)
		28		30		32	
224	Shell Pink-VY LT	9	3	8	3	8	3
300	Mahogany-VY DK	9	3	8	3	8	3
301	Mahogany-MD	32	12	30	11	28	11
352	Coral-LT	18	7	17	7	16	6
356	Terra Cotta-MD	65	25	61	23	57	22
371	Mustard	42	16	39	15	37	14
402	Mahogany-VY LT	113	44	105	41	98	38
407	Desert Sand-DK	30	12	28	11	26	10
420	Hazelnut Brown-DK	54	21	50	20	47	19
453	Shell Gray-LT	4	1	4	1	3	1
520	Fern Green-DK	24	9	22	8	21	8
524	Fern Green-VY LT	22	8	20	8	19	7
535	Ash Gray-VY LT	11	4	10	4	10	3
610	Drab Brown-DK	86	33	80	31	75	29
611	Drab Brown	482	190	450	177	422	166
632	Desert Sand-UL VY DK	6	2	5	2	5	2
642	Beige Gray-DK	123	48	115	45	108	42
644	Beige Gray-MD	33	13	31	12	29	11
645	Beaver Gray-VY DK	44	17	41	16	38	15
647	Beaver Gray-MD	80	31	74	29	70	27
712	Cream	34	13	32	12	30	11
729	Old Gold- MD	6	2	6	2	6	2
730	Olive Green-VY DK	370	145	345	136	323	127
732	Olive Green	210	82	196	77	184	72
734	Olive Green-LT	12	5	11	4	11	4
738	Tan-VY LT	24	9	22	8	21	8
739	Tan-UL VY LT	54	21	50	20	47	19
754	Peach-LT	39	15	37	14	34	14
758	Terra Cotta-VY LT	91	35	85	33	80	31
760	Salmon	1	1	1	1	1	1
822	Beige Gray-LT	111	44	104	41	97	38
829	Golden Olive-VY DK	62	24	58	23	55	21
830	Golden Olive-DK	89	35	83	32	78	30
832	Golden Olive	22	8	20	8	19	7
833	Golden Olive-LT	15	6	14	5	14	5
834	Golden Olive-VY LT	8	3	8	3	7	3
898	Coffee Brown-VY DK	175	69	163	64	153	60
900	Burnt Orange-DK	36	14	34	13	32	12
920	Copper-MD	17	6	16	6	15	6

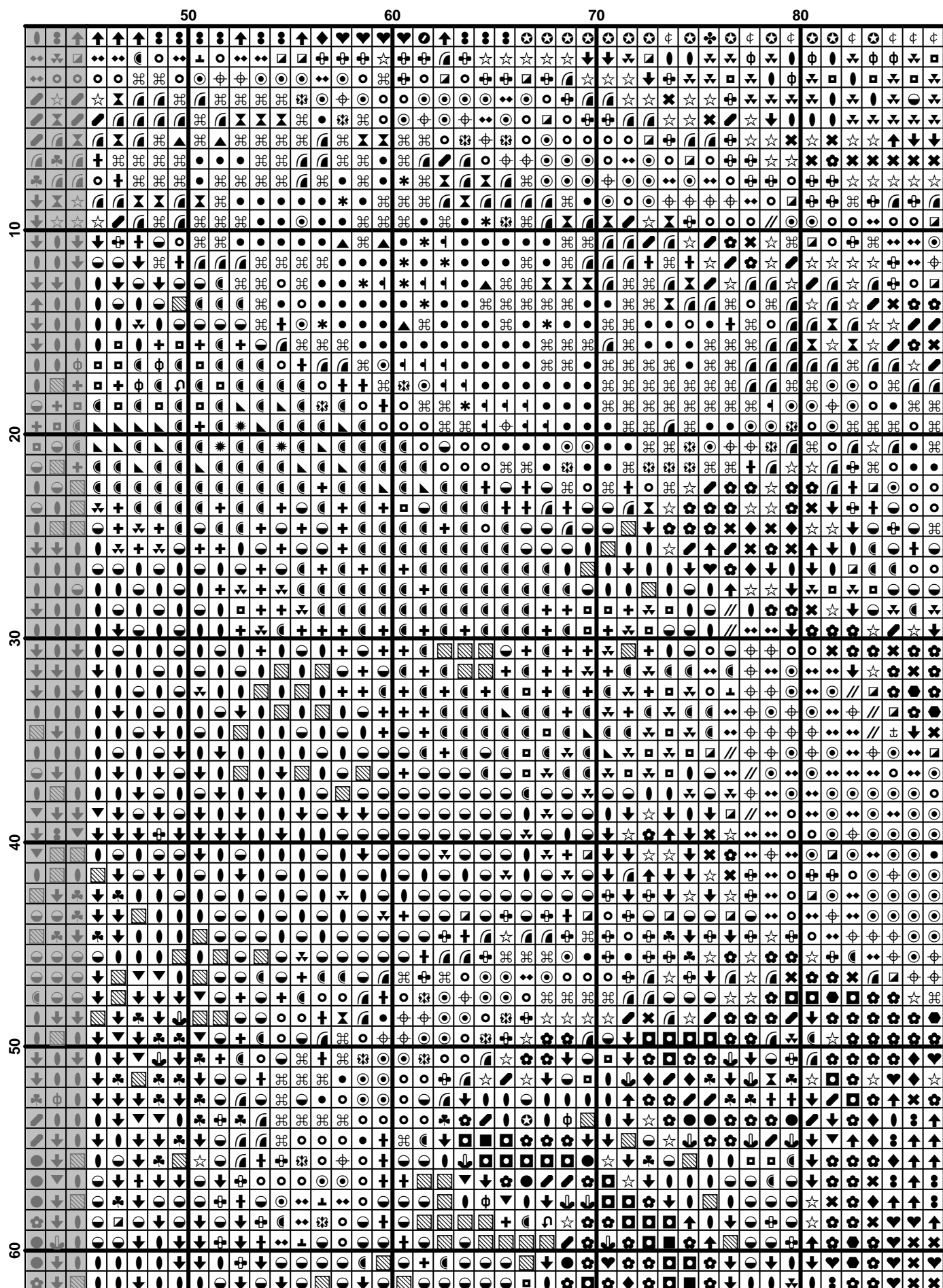
Copyright (c) 2007-, Golden Kite (Golden K.)

Internet: www.goldenkite.com

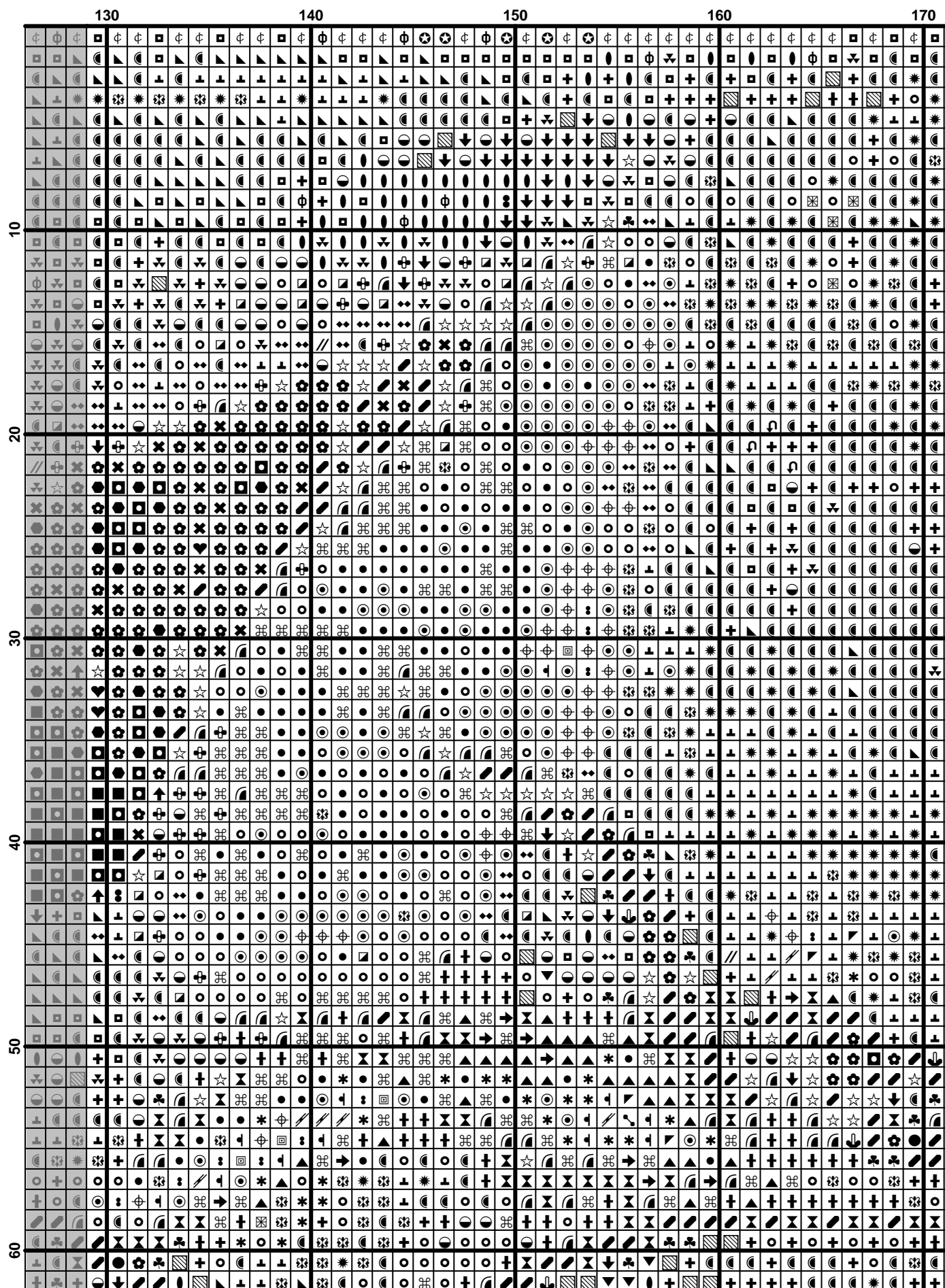
e-mail: info@goldenkite.com

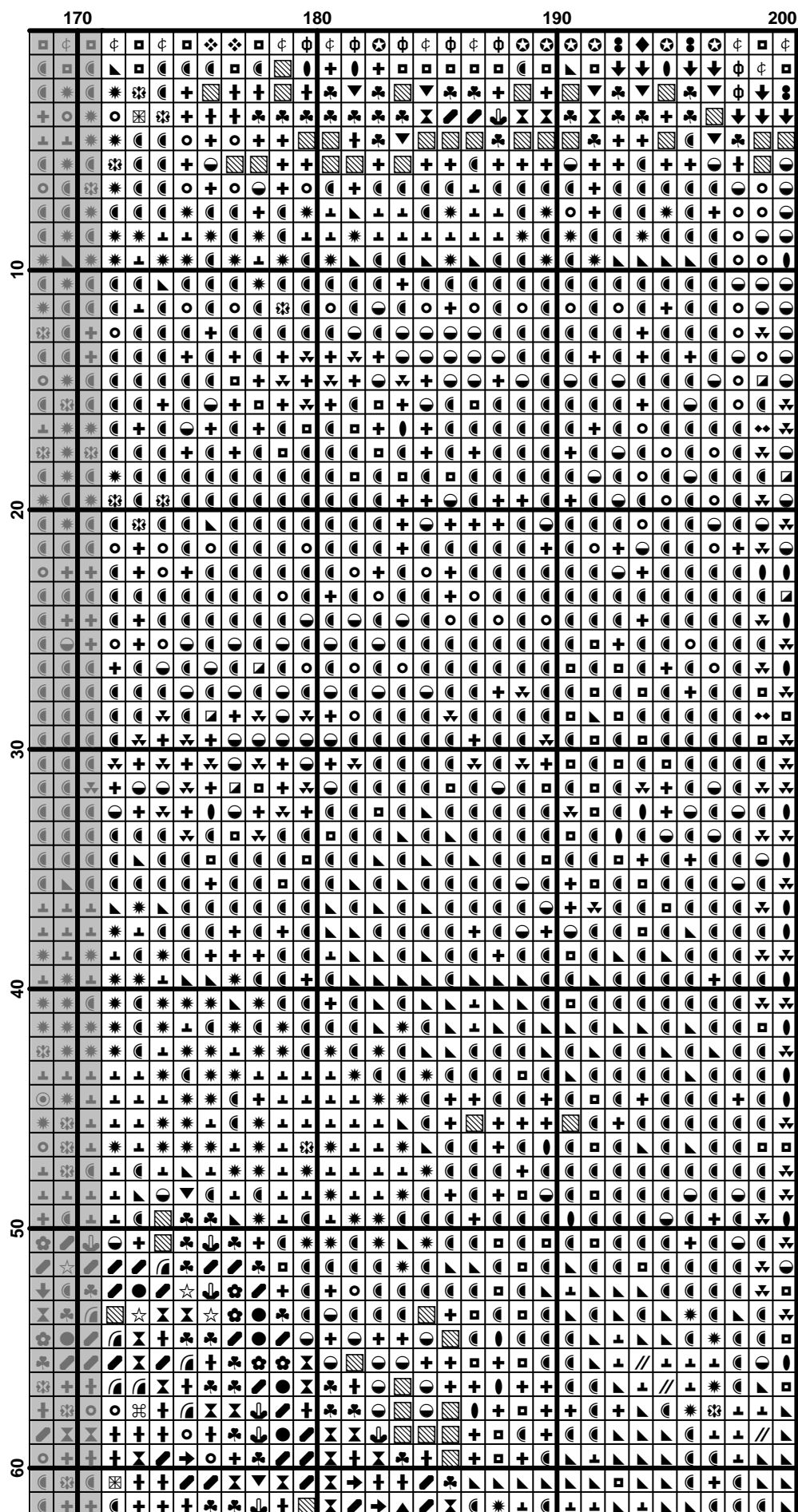
921	Copper	28	11	26	10	25	10
922	Copper-LT	12	5	11	4	10	4
934	Black Avocado Green	265	104	247	97	232	91
935	Avocado Green-DK	193	76	180	71	169	66
936	Avocado Green-VY DK	212	83	197	77	185	73
938	Coffee Brown-UL DK	109	42	102	40	96	37
948	Peach-VY LT	22	8	20	8	19	7
950	Desert Sand-LT	37	14	35	13	33	12
951	Tawny -LT	70	27	65	25	61	24
975	Golden Brown-DK	44	17	41	16	39	15
3011	Khaki Green-DK	734	289	685	269	642	253
3012	Khaki Green-MD	231	91	215	85	202	79
3021	Brown Gray -VY DK	102	40	95	37	89	35
3022	Brown Gray -MD	154	60	143	56	134	53
3023	Brown Gray -LT	68	26	63	25	59	23
3032	Mocha Brown-MD	30	12	28	11	26	10
3041	Antique Violet-MD	2	1	2	1	2	1
3045	Yellow Beige-DK	7	3	7	2	6	2
3046	Yellow Beige-MD	15	6	14	5	13	5
3051	Green Gray-DK	165	65	154	61	145	57
3052	Green Gray-MD	54	21	50	20	47	19
3064	Desert Sand	12	5	11	4	10	4
3346	Hunter Green	94	37	88	34	82	32
3362	Pine Green-DK	9	3	8	3	8	3
3364	Pine Green	32	12	29	11	28	11
3772	Desert Sand-VY DK	7	3	7	2	6	2
3774	Desert Sand-VY LT	44	17	41	16	38	15
3776	Mahogany-LT	40	15	37	14	35	14
3778	Terra Cotta-LT	30	12	28	11	26	10
3779	Terra Cotta-UL VY LT	32	12	30	11	28	11
3787	Brown Gray -DK	195	77	182	71	171	67
3790	Beige Gray-UL DK	93	36	86	34	81	32
3828	Hazelnut Brown	17	6	16	6	15	6
3829	Old Gold-VY DK	3	1	3	1	3	1
3855	Autumn Gold-LT	3	1	2	1	2	1
3856	Mahogany-UL VY LT	41	15	38	14	35	14
3862	Mocha Beige-DK	164	64	153	60	143	56
3864	Mocha Beige-LT	40	15	37	14	35	14

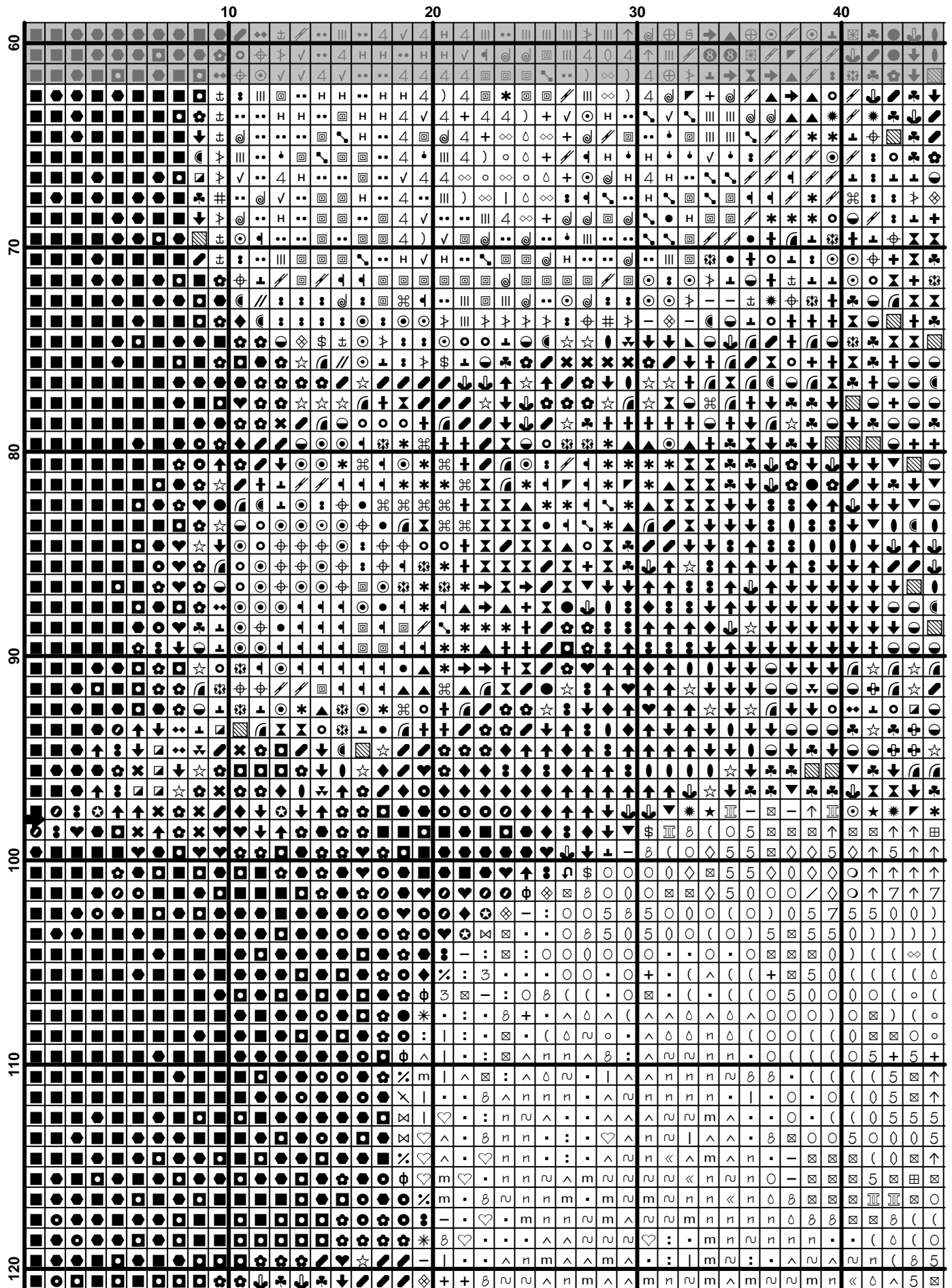


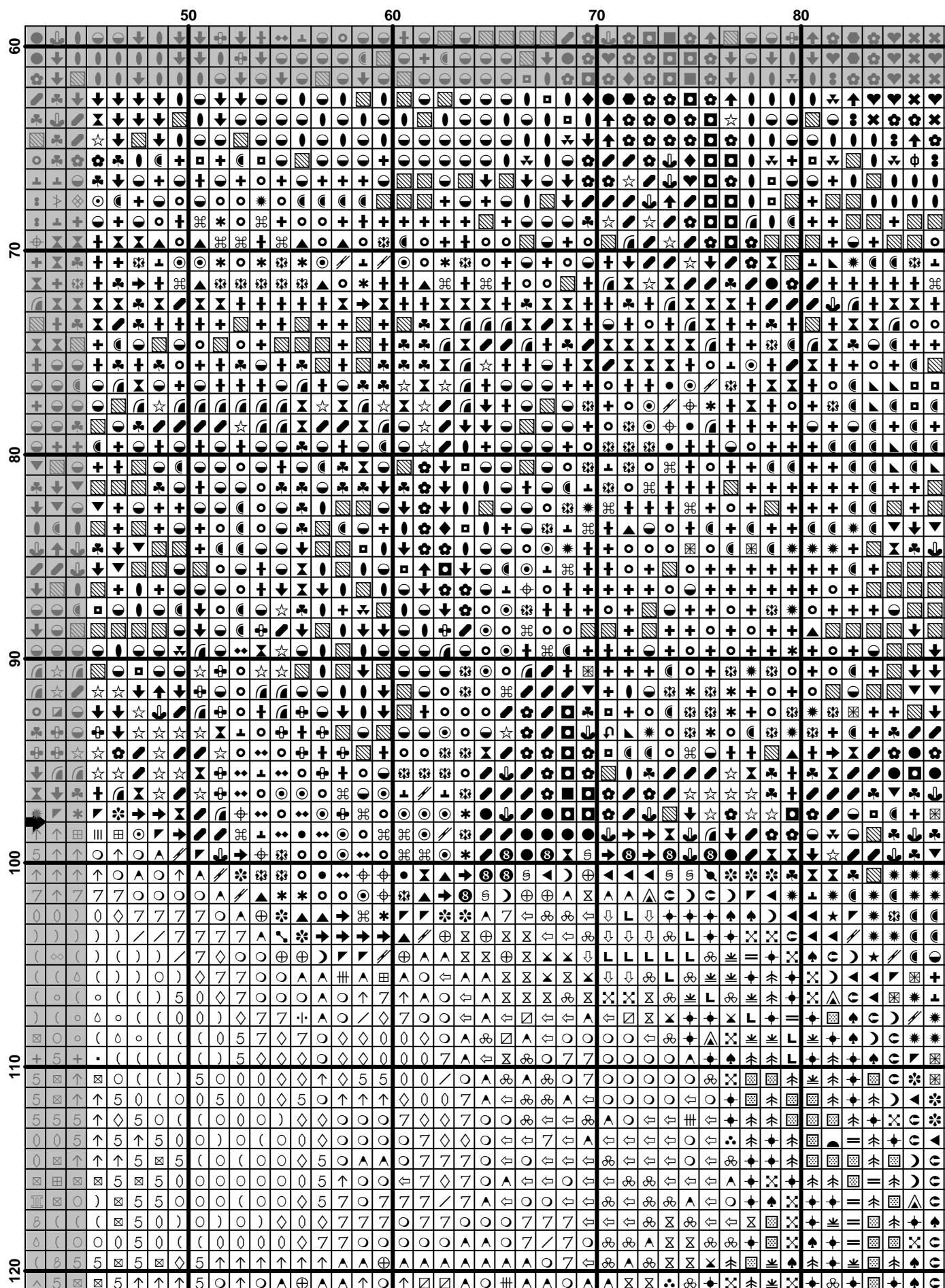


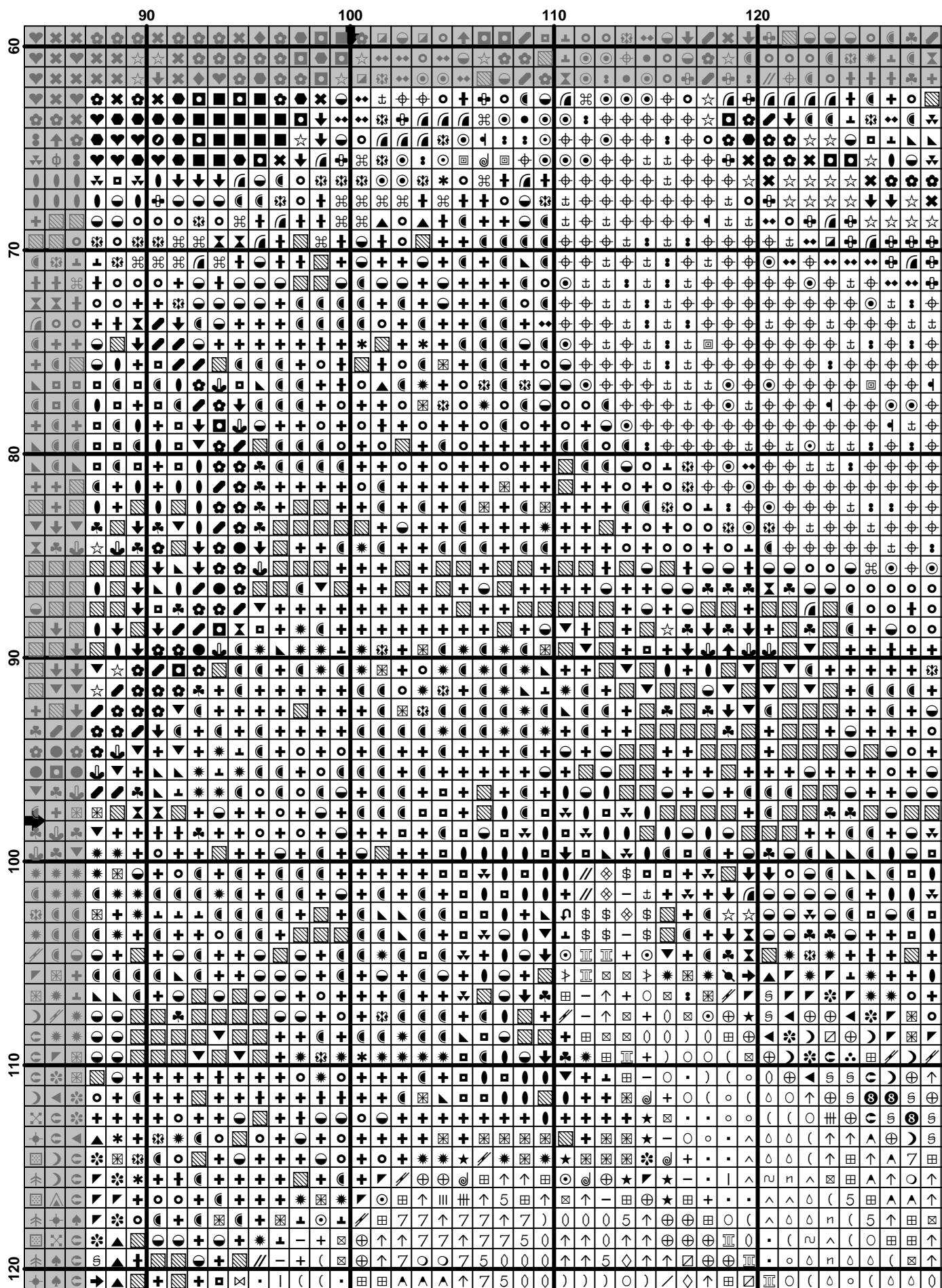


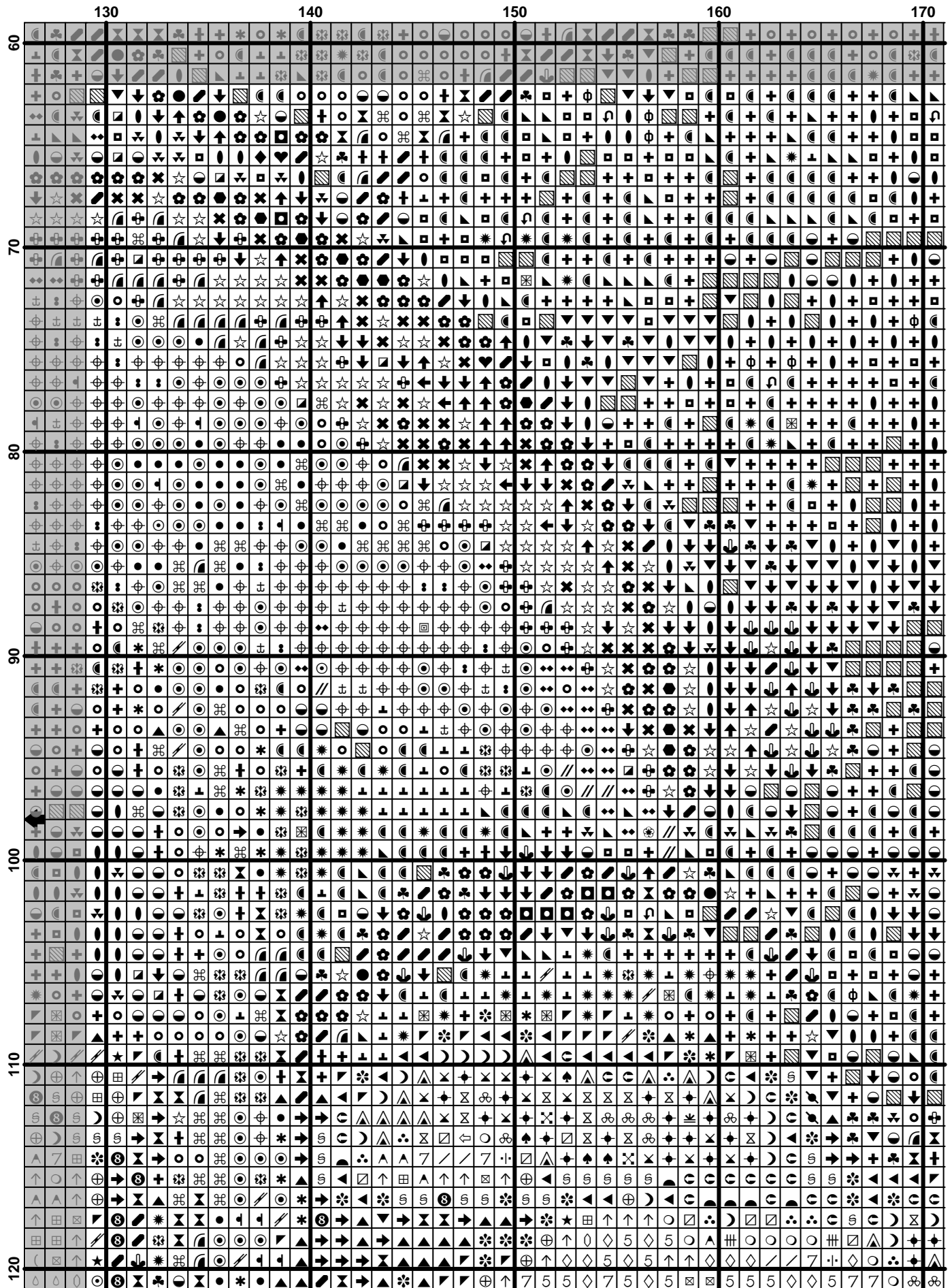


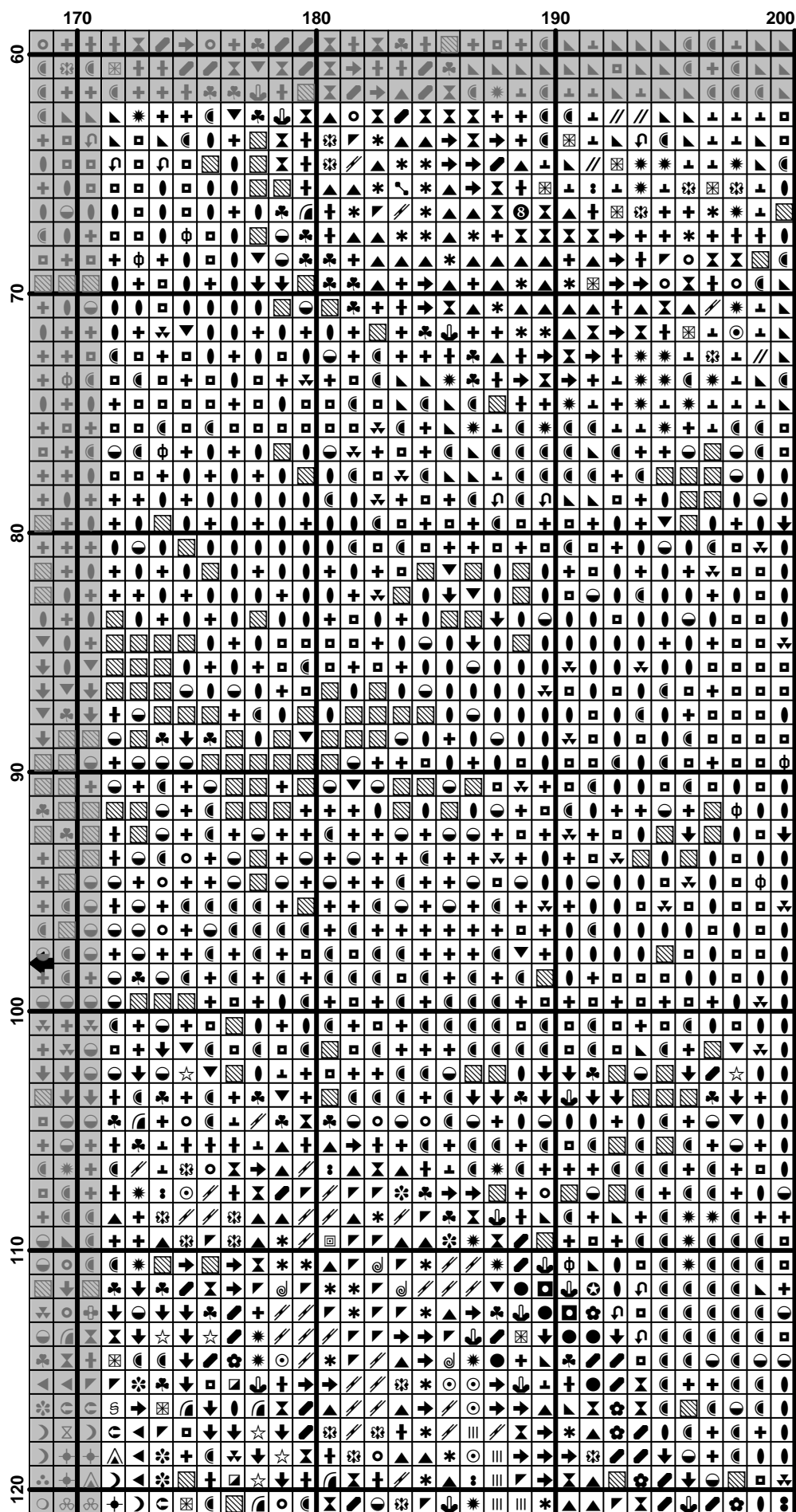




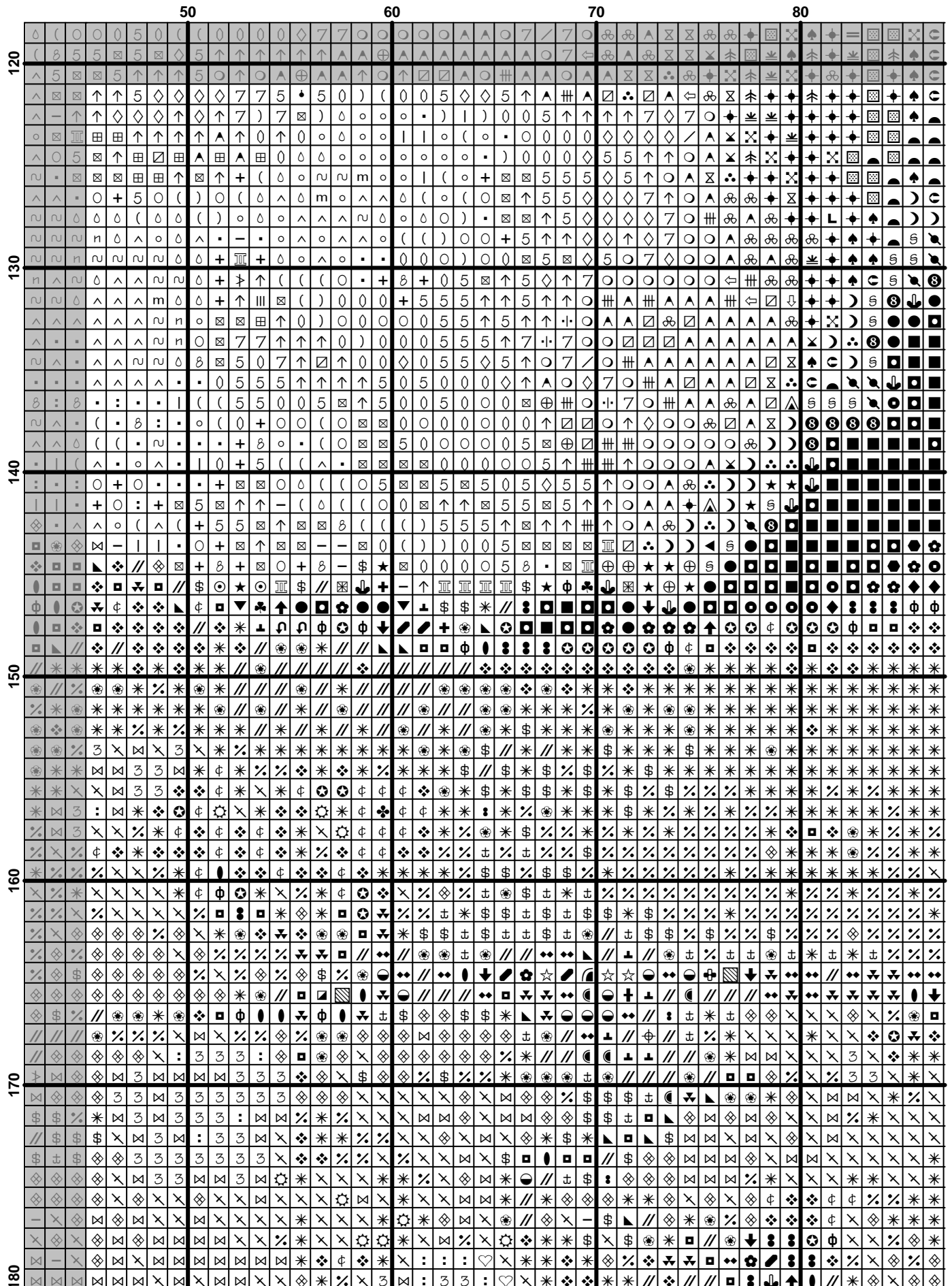


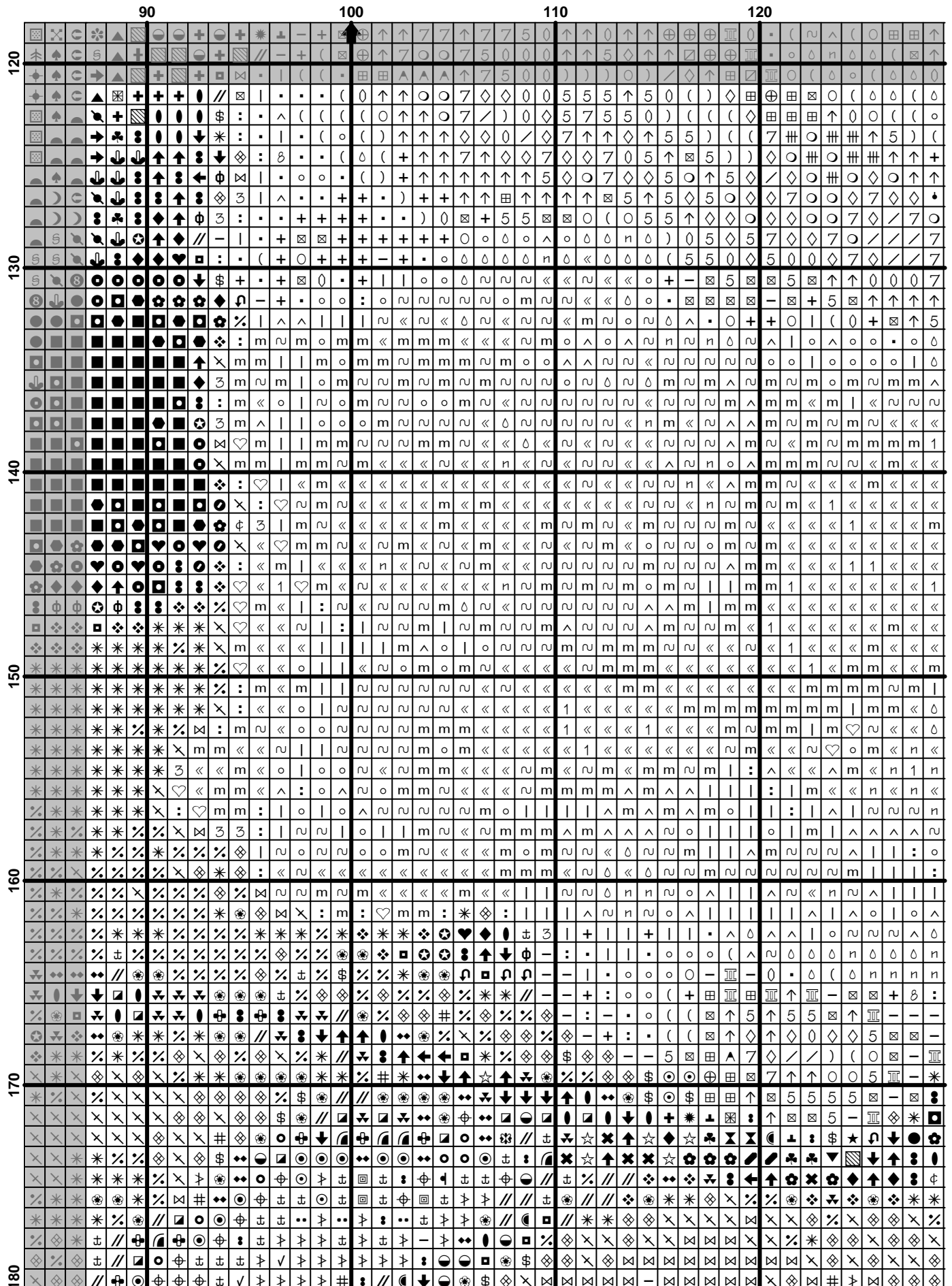












(20)

