

1125 Nymph with Morning Glory Flowers



This pattern may not be copied, sold or in any other way handled in any way that violates the international copyright laws. If you get hold of this pattern (and or this document) in any other way than via a direct download from www.goldenkite.com or via a mail from us, you should report that to us at legal_actions@goldenkite.com .

Copyright (c) 2007-, Golden Kite. All rights reserved.

Instructions

Thank you for choosing Golden Kite products!
We hope you will have lots of fun with this cross-stitch pattern!

Fabric

Press the fabric with an iron if needed. A good thing to prevent the fabric from fraying is to machine zigzag the edges.

On large patterns, it is easiest to start from the upper left corner of the design. Make sure you have the proper margins before starting and that the fabric piece is of the correct size. The best way to verify this is to count all stitch positions on the fabric from the upper left corner downwards and to the right to make sure there is enough space for the design.

Some prefer to start in the center of the design instead. To locate the center of the fabric, fold the fabric in half both vertically and horizontally. The center is located where these two folds meet.

Stitches

Each length of DMC tread consists of six strands.
Use two of these strands for all stitches.

Note that some colors may be mixes (or blends) between two different pure colors. In that case take one strand of the two colors each and thread the two strands into the needle at the same time for stitching.

All stitches are full cross-stitches. No half-stitching and no back-stitching is necessary in this pattern.

All cross-stitches will be worked into the holes in the fabric from left to right. Always use the larger holes in the fabric for the stitches. Adjacent stitches should meet in the same hole. Make sure all stitches cross in the same direction.

Please be careful when washing the finished embroidery! The cotton thread may bleed when washed. Only hand wash it in lukewarm water. Remove excess water by roll it in a towel and lay it flat to air dry. Natural fabrics may shrink slightly when washed. We do not recommend washing the embroidery if not absolutely necessary and we take no responsibility for any damage that may occur.

When you start using this product you agree that Golden Kite (Golden K), or any people working for or in association with Golden Kite (Golden K), cannot be set responsible for any physical, mental, economical or other type of damage caused by this product (including this document, pattern, threads, needles and any other parts received by you from Golden Kite (Golden K)).

This pattern may not be copied, sold or in any other way handled in any way that violates the international copyright laws. If you get hold of this pattern (and or this document) in any other way than via a direct download from www.goldenkite.com or via a mail from us, you should report that to us at legal_actions@goldenkite.com .

Nymph with Morning Glory Flowers

Stitch Count	
Horizontal:	260
Vertical:	375

Recommended Fabric Color
Antique White

This table tells the size of the pattern (without any margins) and the size of the fabric required to stitch the pattern (including recommended margins). 3 inch margins have been added on each side in the 'Including Margins' row.

The sizes are given for 14, 16 and 18 stitches per inch fabrics.

Make sure to use the 'Including Margins' row when cutting the piece of fabric to be used. Also make sure that 3 inch margins are enough for your stitching technique and add more margin areas if necessary.

	14				16				18			
	Width		Height		Width		Height		Width		Height	
	cm	inch	cm	inch	cm	inch	cm	inch	cm	inch	cm	inch
Pattern:	47	18.48	68	26.67	42	16.17	60	23.34	37	14.375	53	20.75
Including Margins:	63	25	84	33	58	23	76	30	53	21	69	27
	10				12				24			
	Width		Height		Width		Height		Width		Height	
	cm	inch	cm	inch	cm	inch	cm	inch	cm	inch	cm	inch
Pattern:	65	25.87	95	37.33	54	21.56	79	31.11	27	10.78	39	15.55
Including Margins:	81	32	111	44	70	28	95	38	43	17	55	22
	25				26				27			
	Width		Height		Width		Height		Width		Height	
	cm	inch	cm	inch	cm	inch	cm	inch	cm	inch	cm	inch
Pattern:	26	10.34	38	14.93	25	9.95	36	14.36	24	9.58	35	13.82
Including Margins:	42	17	54	21	41	16	52	21	40	16	51	20
	28				30				32			
	Width		Height		Width		Height		Width		Height	
	cm	inch	cm	inch	cm	inch	cm	inch	cm	inch	cm	inch
Pattern:	23	9.24	34	13.33	21	8.62	31	12.44	20	8.08	29	11.66
Including Margins:	39	16	50	20	37	15	47	19	36	15	45	18

Solid Color Stitches. Use two strands of the specified color for these stitches.		
Symbol	DMC	Name
✱	223	Shell Pink-LT
(225	Shell Pink-UL VY LT
■	310	Black
☾	317	Pewter Gray
➤	320	Pistachio Green-MD
⊕	451	Shell Gray-DK
e	453	Shell Gray-LT
▼	501	Blue Green-DK
L	502	Blue Green
⊗	503	Blue Green-MD
‡	522	Fern Green
2	523	Fern Green-LT
m	524	Fern Green-VY LT
c	535	Ash Gray-VY LT
:	543	Beige Brown-UL VY LT
♣	563	Jade-LT
⌘	598	Turquoise-LT
◇	613	Drab Brown-VY LT
↘	640	Beige Gray-VY DK
⌚	642	Beige Gray-DK
5	644	Beige Gray-MD
*	645	Beaver Gray-VY DK
⊞	646	Beaver Gray-DK
↙	647	Beaver Gray-MD
⬅	648	Beaver Gray-LT
△	712	Cream
1	746	Off White
^	747	Sky Blue-VY LT
▷	775	Baby Blue-VY LT
✕	801	Coffee Brown-DK
○	822	Beige Gray-LT
●	823	Navy Blue-DK
⊞	828	Blue-UL VY LT
⌋	840	Beige Brown-MD
⊞	841	Beige Brown-LT
⌋	842	Beige Brown-VY LT
▲	844	Beaver Brown-UL DK

↑	924	Gray Green--VY DK
◇	926	Gray Green-MD
↑	927	Gray Green-LT
↓	930	Antique Blue-DK
⋈	931	Antique Blue-MD
∇	932	Antique Blue-LT
●	934	Black Avocado Green
■	939	Navy Blue-VY DK
⊞	966	Baby Green-MD
⋈	3021	Brown Gray-VY DK
⋈	3022	Brown Gray-MD
⋈	3023	Brown Gray-LT
α	3024	Brown Gray-VY LT
♥	3031	Mocha Brown-VY DK
⊞	3032	Mocha Brown-MD
=	3033	Mocha Brown-VY LT
♣	3052	Green Gray-MD
⇒	3072	Beaver Gray-VY LT
⊞	3362	Pine Green-DK
⋈	3363	Pine Green-MD
⋈	3750	Antique Blue-VY DK
⋈	3752	Antique Blue-VY LT
⋈	3756	Baby Blue-UL VY LT
⋈	3768	Gray Green-DK
~	3770	Tawny-VY LT
♣	3781	Mocha Brown-DK
↓	3782	Mocha Brown-LT
⊞	3787	Brown Gray-DK
◆	3799	Pewter Gray-VY DK
⊞	3811	Turquoise-VY LT
×	3816	Celadon Green-MD
⌋	3848	Teal Green-MD
⌋	3849	Teal Green-LT
⌋	3861	Cocoa-LT
⌋	3862	Mocha Beige-DK
⌋	3863	Mocha Beige-MD
⌋	3864	Mocha Beige-LT
u	3865	Winter White
⌋	3866	Mocha Brown-UL VY LT
?	Ecru	Ecru

Blend Stitches. Use one strand of each of DMC1 and DMC2 for these stitches.				
Symbol	DMC1	Name1	DMC2	Name2
↓	3021	Brown Gray-VY DK	3799	Pewter Gray-VY DK
▲	839	Beige Brown-DK	3787	Brown Gray-DK
➔	839	Beige Brown-DK	3021	Brown Gray-VY DK
+	645	Beaver Gray-VY DK	844	Beaver Brown-UL DK
↘	839	Beige Brown-DK	844	Beaver Brown-UL DK
♣	535	Ash Gray-VY LT	645	Beaver Gray-VY DK
⊞	3860	Cocoa	839	Beige Brown-DK
↘	3863	Mocha Beige-MD	3864	Mocha Beige-LT
⋈	640	Beige Gray-VY DK	3787	Brown Gray-DK

●	844	Beaver Brown-UL DK	3787	Brown Gray-DK
//	3726	Antique Mauve-DK	3863	Mocha Beige-MD
⊕	451	Shell Gray-DK	3861	Cocoa-LT
☒	844	Beaver Brown-UL DK	3860	Cocoa
◎	840	Beige Brown-MD	841	Beige Brown-LT
▼	844	Beaver Brown-UL DK	3799	Pewter Gray-VY DK
✕	924	Gray Green-VY DK	3799	Pewter Gray-VY DK
Ⓢ	823	Navy Blue-DK	935	Avocado Green-DK
☞	935	Avocado Green-DK	3799	Pewter Gray-VY DK
●	823	Navy Blue-DK	924	Gray Green-VY DK
7	524	Fern Green-VY LT	644	Beige Gray-MD
⚓	645	Beaver Gray-VY DK	646	Beaver Gray-DK
⚙	823	Navy Blue-DK	3799	Pewter Gray-VY DK
▶	3815	Celadon Green-DK	3768	Gray Green-DK
\$	3032	Mocha Brown-MD	223	Shell Pink-LT
♡	3866	Mocha Brown-UL VY LT	955	Nile Green-LT
9	648	Beaver Gray-LT	955	Nile Green-LT
☒	3768	Gray Green-DK	501	Blue Green-DK
†	535	Ash Gray-VY LT	844	Beaver Brown-UL DK
←	535	Ash Gray-VY LT	3799	Pewter Gray-VY DK
▲	646	Beaver Gray-DK	3787	Brown Gray-DK
◀	3860	Cocoa	3787	Brown Gray-DK
✕	3022	Brown Gray-MD	3860	Cocoa
T	3022	Brown Gray-MD	3032	Mocha Brown-MD
❖	640	Beige Gray-VY DK	645	Beaver Gray-VY DK
○	646	Beaver Gray-DK	926	Gray Green-MD
≈	503	Blue Green-MD	647	Beaver Gray-MD
✦	3860	Cocoa	640	Beige Gray-VY DK
⌂	3862	Mocha Beige-DK	3863	Mocha Beige-MD
ك	647	Beaver Gray-MD	3861	Cocoa-LT
▸	3790	Beige Gray-UL DK	3860	Cocoa
¼	840	Beige Brown-MD	3032	Mocha Brown-MD
ㄣ	612	Drab Brown-LT	840	Beige Brown-MD
☆	644	Beige Gray-MD	3864	Mocha Beige-LT
☞	840	Beige Brown-MD	3863	Mocha Beige-MD
☺	839	Beige Brown-DK	3790	Beige Gray-UL DK
●	645	Beaver Gray-VY DK	3787	Brown Gray-DK
●	645	Beaver Gray-VY DK	3860	Cocoa
⌘	640	Beige Gray-VY DK	646	Beaver Gray-DK
☺	839	Beige Brown-DK	632	Desert Sand-UL VY DK
■	632	Desert Sand-UL VY DK	3862	Mocha Beige-DK
×	612	Drab Brown-LT	841	Beige Brown-LT
✓	3864	Mocha Beige-LT	841	Beige Brown-LT
▲	3726	Antique Mauve-DK	840	Beige Brown-MD
H	3022	Brown Gray-MD	3726	Antique Mauve-DK
—	932	Antique Blue-LT	966	Baby Green-MD
4	955	Nile Green-LT	966	Baby Green-MD
⊕	927	Gray Green-LT	563	Jade-LT
⚙	926	Gray Green-MD	645	Beaver Gray-VY DK
#	3363	Pine Green-MD	524	Fern Green-VY LT
✕	367	Pistachio Green-DK	3787	Brown Gray-DK
0	955	Nile Green-LT	3024	Brown Gray-VY LT
☞	320	Pistachio Green-MD	522	Fern Green
☒	367	Pistachio Green-DK	501	Blue Green-DK
Ⓢ	535	Ash Gray-VY LT	3815	Celadon Green-DK
v	3024	Brown Gray-VY LT	ecru	Ecru
..	503	Blue Green-MD	563	Jade-LT
^	640	Beige Gray-VY DK	3023	Brown Gray-LT
z	3022	Brown Gray-MD	223	Shell Pink-LT

Copyright (c) 2007-, Golden Kite (Golden K.)

Internet: www.goldenkite.com

e-mail: info@goldenkite.com

△	646	Beaver Gray-DK	563	Jade-LT
♣	501	Blue Green-DK	3815	Celadon Green-DK
III	3752	Antique Blue-VY LT	926	Gray Green-MD
♣	828	Blue-UL VY LT	932	Antique Blue-LT
√	932	Antique Blue-LT	955	Nile Green-LT
«	746	Off White	3756	Baby Blue-UL VY LT
□	955	Nile Green-LT	3756	Baby Blue-UL VY LT
♣	3815	Celadon Green-DK	320	Pistachio Green-MD
★	320	Pistachio Green-MD	645	Beaver Gray-VY DK
✕	502	Blue Green	367	Pistachio Green-DK
♣	503	Blue Green-MD	367	Pistachio Green-DK
♣	523	Fern Green-LT	642	Beige Gray-DK
♣	524	Fern Green-VY LT	564	Jade-VY LT
II	524	Fern Green-VY LT	3782	Mocha Brown-LT
◦	955	Nile Green-LT	746	Off White
♣	543	Beige Brown-UL VY LT	613	Drab Brown-VY LT
/	950	Desert Sand-LT	613	Drab Brown-VY LT
•	822	Beige Gray-LT	ecru	Ecru
♣	966	Baby Green-MD	3752	Antique Blue-VY LT
6	822	Beige Gray-LT	613	Drab Brown-VY LT
♣	501	Blue Green-DK	535	Ash Gray-VY LT
♣	646	Beaver Gray-DK	502	Blue Green
♣	535	Ash Gray-VY LT	935	Avocado Green-DK
n	3865	Winter White	747	Sky Blue-VY LT
♣	3849	Teal Green-LT	931	Antique Blue-MD
♣	535	Ash Gray-VY LT	924	Gray Green-VY DK
♣	924	Gray Green-VY DK	501	Blue Green-DK
♣	3726	Antique Mauve-DK	841	Beige Brown-LT
♣	3863	Mocha Beige-MD	3790	Beige Gray-UL DK
♣	3726	Antique Mauve-DK	3862	Mocha Beige-DK
♦	3726	Antique Mauve-DK	3790	Beige Gray-UL DK
H	224	Shell Pink-VY LT	841	Beige Brown-LT
♣	612	Drab Brown-LT	223	Shell Pink-LT
♣	223	Shell Pink-LT	840	Beige Brown-MD
♣	840	Beige Brown-MD	3022	Brown Gray-MD
+	842	Beige Brown-VY LT	3713	Salmon-VY LT
III	840	Beige Brown-MD	3864	Mocha Beige-LT
✱	3815	Celadon Green-DK	367	Pistachio Green-DK
♣	524	Fern Green-VY LT	3023	Brown Gray-LT
♣	3866	Mocha Brown-UL VY LT	ecru	Ecru
♣	644	Beige Gray-MD	955	Nile Green-LT
♣	524	Fern Green-VY LT	648	Beaver Gray-LT
)	3713	Salmon-VY LT	3866	Mocha Brown-UL VY LT
△	3024	Brown Gray-VY LT	3033	Mocha Brown-VY LT
<	3866	Mocha Brown-UL VY LT	762	Pearl Gray-VY LT
♣	3866	Mocha Brown-UL VY LT	3756	Baby Blue-UL VY LT
○	927	Gray Green-LT	932	Antique Blue-LT
::	648	Beaver Gray-LT	927	Gray Green-LT
3	453	Shell Gray-LT	648	Beaver Gray-LT
L	3713	Salmon-VY LT	822	Beige Gray-LT
✱	640	Beige Gray-VY DK	451	Shell Gray-DK
♣	503	Blue Green-MD	646	Beaver Gray-DK
♣	646	Beaver Gray-DK	647	Beaver Gray-MD
I	712	Cream	955	Nile Green-LT
=	645	Beaver Gray-VY DK	367	Pistachio Green-DK

This table specifies how much thread of each color is required to stitch this pattern. It is good to know that one complete DMC skein contains 313 inches (795 cm) thread.

DMC	Name	Usage (cm)	Usage (inch)	Usage (cm)	Usage (inch)	Usage (cm)	Usage (inch)
		14		16		18	
223	Shell Pink-LT	54	21	52	20	46	18
224	Shell Pink-VY LT	10	3	10	3	9	3
225	Shell Pink-UL VY LT	11	4	11	4	10	3
310	Black	82	32	78	30	70	27
317	Pewter Gray	11	4	10	3	9	3
320	Pistachio Green-MD	65	25	62	24	56	22
367	Pistachio Green-DK	77	30	73	28	66	25
451	Shell Gray-DK	86	33	82	32	74	29
453	Shell Gray-LT	71	27	68	26	61	24
501	Blue Green-DK	136	53	130	51	117	46
502	Blue Green	43	16	41	16	37	14
503	Blue Green-MD	110	43	105	41	94	37
522	Fern Green	51	20	49	19	44	17
523	Fern Green-LT	160	62	152	59	137	53
524	Fern Green-VY LT	332	130	316	124	285	112
535	Ash Gray-VY LT	615	242	586	230	527	207
543	Beige Brown-UL VY LT	199	78	190	74	171	67
563	Jade-LT	37	14	35	13	32	12
564	Jade-VY LT	9	3	9	3	8	3
598	Turquoise-LT	4	1	4	1	4	1
612	Drab Brown-LT	94	37	90	35	81	31
613	Drab Brown-VY LT	222	87	212	83	191	75
632	Desert Sand-UL VY DK	6	2	5	1	5	1
640	Beige Gray-VY DK	619	243	589	231	530	208
642	Beige Gray-DK	308	121	293	115	264	103
644	Beige Gray-MD	321	126	305	120	275	108
645	Beaver Gray-VY DK	899	353	856	337	771	303
646	Beaver Gray-DK	527	207	502	197	451	177
647	Beaver Gray-MD	214	84	203	79	183	72
648	Beaver Gray-LT	221	87	211	83	190	74
712	Cream	197	77	188	74	169	66
746	Off White	115	45	109	42	98	38
747	Sky Blue-VY LT	53	20	50	19	45	17
762	Pearl Gray-VY LT	37	14	35	13	31	12
775	Baby Blue-VY LT	12	4	12	4	10	3
801	Coffee Brown-DK	2	1	2	1	2	1
822	Beige Gray-LT	361	142	344	135	310	122
823	Navy Blue-DK	4002	1575	3811	1500	3430	1350
828	Blue-UL VY LT	11	4	10	3	9	3
839	Beige Brown-DK	243	95	232	91	208	81
840	Beige Brown-MD	478	188	455	179	409	161
841	Beige Brown-LT	435	171	414	162	373	146
842	Beige Brown-VY LT	99	38	94	37	85	33
844	Beaver Brown-UL DK	1080	425	1028	404	925	364
924	Gray Green--VY DK	2071	815	1973	776	1775	698
926	Gray Green-MD	59	23	56	22	50	19
927	Gray Green-LT	81	31	77	30	70	27
930	Antique Blue-DK	21	8	20	7	18	7
931	Antique Blue-MD	9	3	8	3	7	2
932	Antique Blue-LT	21	8	20	7	18	7
934	Black Avocado Green	38	14	37	14	33	12
935	Avocado Green-DK	2776	1092	2644	1040	2379	936
939	Navy Blue-VY DK	1329	523	1265	498	1139	448
950	Desert Sand-LT	19	7	18	7	16	6

Copyright (c) 2007-, Golden Kite (Golden K.)

Internet: www.goldenkite.com

e-mail: info@goldenkite.com

955	Nile Green-LT	179	70	171	67	154	60
966	Baby Green-MD	82	32	78	30	70	27
3021	Brown Gray-VY DK	428	168	407	160	367	144
3022	Brown Gray-MD	451	177	430	169	387	152
3023	Brown Gray-LT	319	125	304	119	273	107
3024	Brown Gray-VY LT	229	90	218	85	196	77
3031	Mocha Brown-VY DK	33	12	32	12	29	11
3032	Mocha Brown-MD	279	109	266	104	239	94
3033	Mocha Brown-VY LT	95	37	91	35	82	32
3052	Green Gray-MD	22	8	20	7	18	7
3072	Beaver Gray-VY LT	99	38	94	37	84	33
3362	Pine Green-DK	27	10	25	9	23	9
3363	Pine Green-MD	31	12	29	11	26	10
3713	Salmon-VY LT	43	16	41	16	37	14
3726	Antique Mauve-DK	48	18	46	18	41	16
3750	Antique Blue-VY DK	34	13	33	12	29	11
3752	Antique Blue-VY LT	27	10	25	9	23	9
3756	Baby Blue-UL VY LT	198	77	189	74	170	66
3768	Gray Green-DK	34	13	33	12	29	11
3770	Tawny-VY LT	7	2	7	2	6	2
3781	Mocha Brown-DK	7	2	6	2	6	2
3782	Mocha Brown-LT	192	75	182	71	164	64
3787	Brown Gray-DK	770	303	734	288	660	259
3790	Beige Gray-UL DK	128	50	122	48	109	42
3799	Pewter Gray-VY DK	2387	939	2273	894	2046	805
3811	Turquoise-VY LT	17	6	16	6	14	5
3815	Celadon Green-DK	57	22	54	21	49	19
3816	Celadon Green-MD	20	7	19	7	17	6
3848	Teal Green-MD	5	1	5	1	4	1
3849	Teal Green-LT	9	3	9	3	8	3
3860	Cocoa	393	154	374	147	336	132
3861	Cocoa-LT	90	35	85	33	77	30
3862	Mocha Beige-DK	29	11	28	11	25	9
3863	Mocha Beige-MD	130	51	124	48	111	43
3864	Mocha Beige-LT	496	195	472	185	425	167
3865	Winter White	160	62	152	59	137	53
3866	Mocha Brown-UL VY LT	352	138	335	131	302	118
ecru	Ecru	422	166	402	158	362	142

Extended thread usage table.							
DMC	Name	Usage (cm)	Usage (inch)	Usage (cm)	Usage (inch)	Usage (cm)	Usage (inch)
		10		12		24	
223	Shell Pink-LT	83	32	69	27	35	14
224	Shell Pink-VY LT	16	5	14	5	7	2
225	Shell Pink-UL VY LT	18	5	15	5	8	2
310	Black	126	49	105	41	53	20
317	Pewter Gray	16	5	14	5	7	2
320	Pistachio Green-MD	101	40	84	33	42	17
367	Pistachio Green-DK	119	45	99	38	50	19
451	Shell Gray-DK	133	52	111	44	56	22
453	Shell Gray-LT	110	43	92	36	46	18
501	Blue Green-DK	211	83	176	69	88	35
502	Blue Green	67	25	56	21	28	11
503	Blue Green-MD	169	67	141	56	71	28
522	Fern Green	79	31	66	26	33	13
523	Fern Green-LT	247	95	206	80	103	40

524	Fern Green-VY LT	513	202	428	168	214	84
535	Ash Gray-VY LT	949	373	791	311	395	155
543	Beige Brown-UL VY LT	308	121	257	101	128	50
563	Jade-LT	58	22	48	18	24	9
564	Jade-VY LT	14	5	12	5	6	2
598	Turquoise-LT	7	2	6	2	3	1
612	Drab Brown-LT	146	56	122	47	61	23
613	Drab Brown-VY LT	344	135	287	113	143	56
632	Desert Sand-UL VY DK	9	2	8	2	4	1
640	Beige Gray-VY DK	954	374	795	312	398	156
642	Beige Gray-DK	475	185	396	155	198	77
644	Beige Gray-MD	495	194	413	162	206	81
645	Beaver Gray-VY DK	1388	545	1157	455	578	227
646	Beaver Gray-DK	812	319	677	266	338	133
647	Beaver Gray-MD	329	130	275	108	137	54
648	Beaver Gray-LT	342	133	285	111	143	56
712	Cream	304	119	254	99	127	50
746	Off White	176	68	147	57	74	29
747	Sky Blue-VY LT	81	31	68	26	34	13
762	Pearl Gray-VY LT	56	22	47	18	23	9
775	Baby Blue-VY LT	18	5	15	5	8	2
801	Coffee Brown-DK	4	2	3	2	2	1
822	Beige Gray-LT	558	220	465	183	233	92
823	Navy Blue-DK	6174	2430	5145	2025	2573	1013
828	Blue-UL VY LT	16	5	14	5	7	2
839	Beige Brown-DK	374	146	312	122	156	61
840	Beige Brown-MD	736	290	614	242	307	121
841	Beige Brown-LT	671	263	560	219	280	110
842	Beige Brown-VY LT	153	59	128	50	64	25
844	Beaver Brown-UL DK	1665	655	1388	546	694	273
924	Gray Green--VY DK	3195	1256	2663	1047	1331	524
926	Gray Green-MD	90	34	75	29	38	14
927	Gray Green-LT	126	49	105	41	53	20
930	Antique Blue-DK	32	13	27	11	14	5
931	Antique Blue-MD	13	4	11	3	5	2
932	Antique Blue-LT	32	13	27	11	14	5
934	Black Avocado Green	59	22	50	18	25	9
935	Avocado Green-DK	4282	1685	3569	1404	1784	702
939	Navy Blue-VY DK	2050	806	1709	672	854	336
950	Desert Sand-LT	29	11	24	9	12	5
955	Nile Green-LT	277	108	231	90	116	45
966	Baby Green-MD	126	49	105	41	53	20
3021	Brown Gray-VY DK	661	259	551	216	275	108
3022	Brown Gray-MD	697	274	581	228	290	114
3023	Brown Gray-LT	491	193	410	161	205	80
3024	Brown Gray-VY LT	353	139	294	116	147	58
3031	Mocha Brown-VY DK	52	20	44	17	22	8
3032	Mocha Brown-MD	430	169	359	141	179	71
3033	Mocha Brown-VY LT	148	58	123	48	62	24
3052	Green Gray-MD	32	13	27	11	14	5
3072	Beaver Gray-VY LT	151	59	126	50	63	25
3362	Pine Green-DK	41	16	35	14	17	7
3363	Pine Green-MD	47	18	39	15	20	8
3713	Salmon-VY LT	67	25	56	21	28	11
3726	Antique Mauve-DK	74	29	62	24	31	12
3750	Antique Blue-VY DK	52	20	44	17	22	8
3752	Antique Blue-VY LT	41	16	35	14	17	7
3756	Baby Blue-UL VY LT	306	119	255	99	128	50
3768	Gray Green-DK	52	20	44	17	22	8

Copyright (c) 2007-, Golden Kite (Golden K.)

Internet: www.goldenkite.com

e-mail: info@goldenkite.com

3770	Tawny-VY LT	11	4	9	3	5	2
3781	Mocha Brown-DK	11	4	9	3	5	2
3782	Mocha Brown-LT	295	115	246	96	123	48
3787	Brown Gray-DK	1188	466	990	389	495	194
3790	Beige Gray-UL DK	196	76	164	63	82	32
3799	Pewter Gray-VY DK	3683	1449	3069	1208	1535	604
3811	Turquoise-VY LT	25	9	21	8	11	4
3815	Celadon Green-DK	88	34	74	29	37	14
3816	Celadon Green-MD	31	11	26	9	13	5
3848	Teal Green-MD	7	2	6	2	3	1
3849	Teal Green-LT	14	5	12	5	6	2
3860	Cocoa	605	238	504	198	252	99
3861	Cocoa-LT	139	54	116	45	58	23
3862	Mocha Beige-DK	45	16	38	14	19	7
3863	Mocha Beige-MD	200	77	167	65	83	32
3864	Mocha Beige-LT	765	301	638	251	319	125
3865	Winter White	247	95	206	80	103	40
3866	Mocha Brown-UL VY LT	544	212	453	177	227	89
ecru	Ecru	652	256	543	213	272	107

Extended thread usage table.							
DMC	Name	Usage (cm)	Usage (inch)	Usage (cm)	Usage (inch)	Usage (cm)	Usage (inch)
		25		26		27	
223	Shell Pink-LT	33	13	32	12	31	12
224	Shell Pink-VY LT	6	2	6	2	6	2
225	Shell Pink-UL VY LT	7	2	7	2	7	2
310	Black	50	19	48	19	47	18
317	Pewter Gray	6	2	6	2	6	2
320	Pistachio Green-MD	40	16	39	15	37	15
367	Pistachio Green-DK	48	18	46	17	44	17
451	Shell Gray-DK	53	21	51	20	49	19
453	Shell Gray-LT	44	17	42	17	41	16
501	Blue Green-DK	84	33	81	32	78	31
502	Blue Green	27	10	26	10	25	9
503	Blue Green-MD	68	27	65	26	63	25
522	Fern Green	32	12	30	12	29	11
523	Fern Green-LT	99	38	95	37	91	35
524	Fern Green-VY LT	205	81	197	78	190	75
535	Ash Gray-VY LT	379	149	365	143	351	138
543	Beige Brown-UL VY LT	123	48	118	46	114	45
563	Jade-LT	23	9	22	8	21	8
564	Jade-VY LT	6	2	6	2	5	2
598	Turquoise-LT	3	1	3	1	3	1
612	Drab Brown-LT	58	22	56	21	54	21
613	Drab Brown-VY LT	138	54	132	52	127	50
632	Desert Sand-UL VY DK	4	1	3	1	3	1
640	Beige Gray-VY DK	382	150	367	144	353	139
642	Beige Gray-DK	190	74	183	71	176	69
644	Beige Gray-MD	198	78	190	75	183	72
645	Beaver Gray-VY DK	555	218	534	210	514	202
646	Beaver Gray-DK	325	127	312	123	301	118
647	Beaver Gray-MD	132	52	127	50	122	48
648	Beaver Gray-LT	137	53	132	51	127	49
712	Cream	122	48	117	46	113	44
746	Off White	71	27	68	26	65	25
747	Sky Blue-VY LT	32	12	31	12	30	11

762	Pearl Gray-VY LT	22	9	21	8	21	8
775	Baby Blue-VY LT	7	2	7	2	7	2
801	Coffee Brown-DK	1	1	1	1	1	1
822	Beige Gray-LT	223	88	215	84	207	81
823	Navy Blue-DK	2470	972	2375	935	2287	900
828	Blue-UL VY LT	6	2	6	2	6	2
839	Beige Brown-DK	150	58	144	56	139	54
840	Beige Brown-MD	294	116	283	111	273	107
841	Beige Brown-LT	269	105	258	101	249	97
842	Beige Brown-VY LT	61	24	59	23	57	22
844	Beaver Brown-UL DK	666	262	640	252	617	243
924	Gray Green--VY DK	1278	503	1229	483	1183	465
926	Gray Green-MD	36	14	35	13	33	13
927	Gray Green-LT	50	19	48	19	47	18
930	Antique Blue-DK	13	5	12	5	12	5
931	Antique Blue-MD	5	1	5	1	5	1
932	Antique Blue-LT	13	5	12	5	12	5
934	Black Avocado Green	24	9	23	8	22	8
935	Avocado Green-DK	1713	674	1647	648	1586	624
939	Navy Blue-VY DK	820	323	789	310	759	299
950	Desert Sand-LT	12	4	11	4	11	4
955	Nile Green-LT	111	43	107	42	103	40
966	Baby Green-MD	50	19	48	19	47	18
3021	Brown Gray-VY DK	264	104	254	100	245	96
3022	Brown Gray-MD	279	109	268	105	258	101
3023	Brown Gray-LT	197	77	189	74	182	71
3024	Brown Gray-VY LT	141	55	136	53	131	51
3031	Mocha Brown-VY DK	21	8	20	8	19	7
3032	Mocha Brown-MD	172	68	165	65	159	63
3033	Mocha Brown-VY LT	59	23	57	22	55	21
3052	Green Gray-MD	13	5	12	5	12	5
3072	Beaver Gray-VY LT	60	24	58	23	56	22
3362	Pine Green-DK	17	6	16	6	15	6
3363	Pine Green-MD	19	7	18	7	17	7
3713	Salmon-VY LT	27	10	26	10	25	9
3726	Antique Mauve-DK	30	12	28	11	27	11
3750	Antique Blue-VY DK	21	8	20	8	19	7
3752	Antique Blue-VY LT	17	6	16	6	15	6
3756	Baby Blue-UL VY LT	122	48	118	46	113	44
3768	Gray Green-DK	21	8	20	8	19	7
3770	Tawny-VY LT	4	1	4	1	4	1
3781	Mocha Brown-DK	4	1	4	1	4	1
3782	Mocha Brown-LT	118	46	114	44	109	43
3787	Brown Gray-DK	475	186	457	179	440	173
3790	Beige Gray-UL DK	78	30	75	29	73	28
3799	Pewter Gray-VY DK	1473	580	1416	557	1364	537
3811	Turquoise-VY LT	10	4	10	3	9	3
3815	Celadon Green-DK	35	14	34	13	33	13
3816	Celadon Green-MD	12	4	12	4	11	4
3848	Teal Green-MD	3	1	3	1	3	1
3849	Teal Green-LT	6	2	6	2	5	2
3860	Cocoa	242	95	233	91	224	88
3861	Cocoa-LT	55	22	53	21	51	20
3862	Mocha Beige-DK	18	6	17	6	17	6
3863	Mocha Beige-MD	80	31	77	30	74	29
3864	Mocha Beige-LT	306	120	294	116	283	111
3865	Winter White	99	38	95	37	91	35
3866	Mocha Brown-UL VY LT	217	85	209	82	201	79
ecru	Ecru	261	102	251	98	241	95

Copyright (c) 2007-, Golden Kite (Golden K.)

Internet: www.goldenkite.com

e-mail: info@goldenkite.com

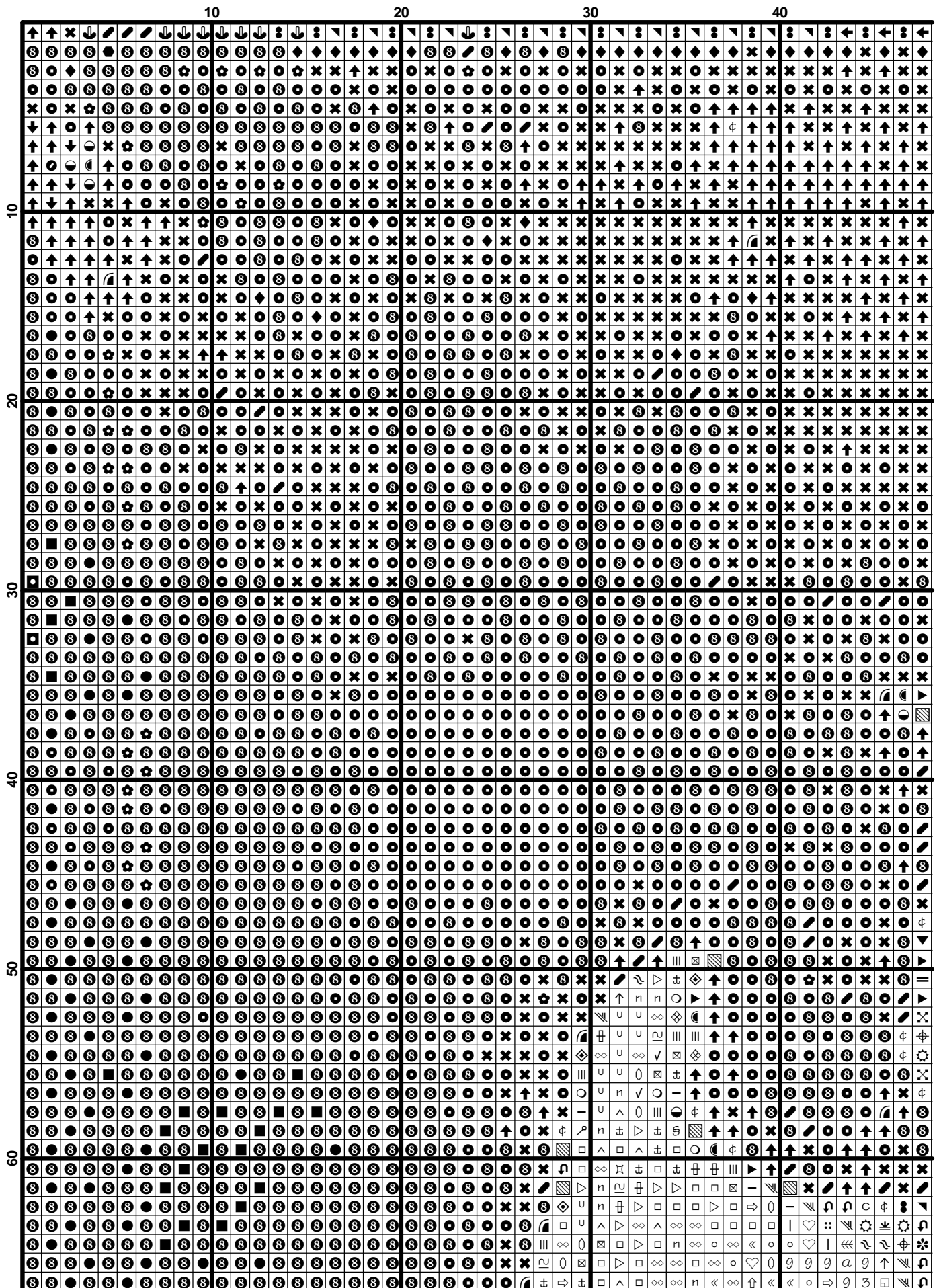
Extended thread usage table.

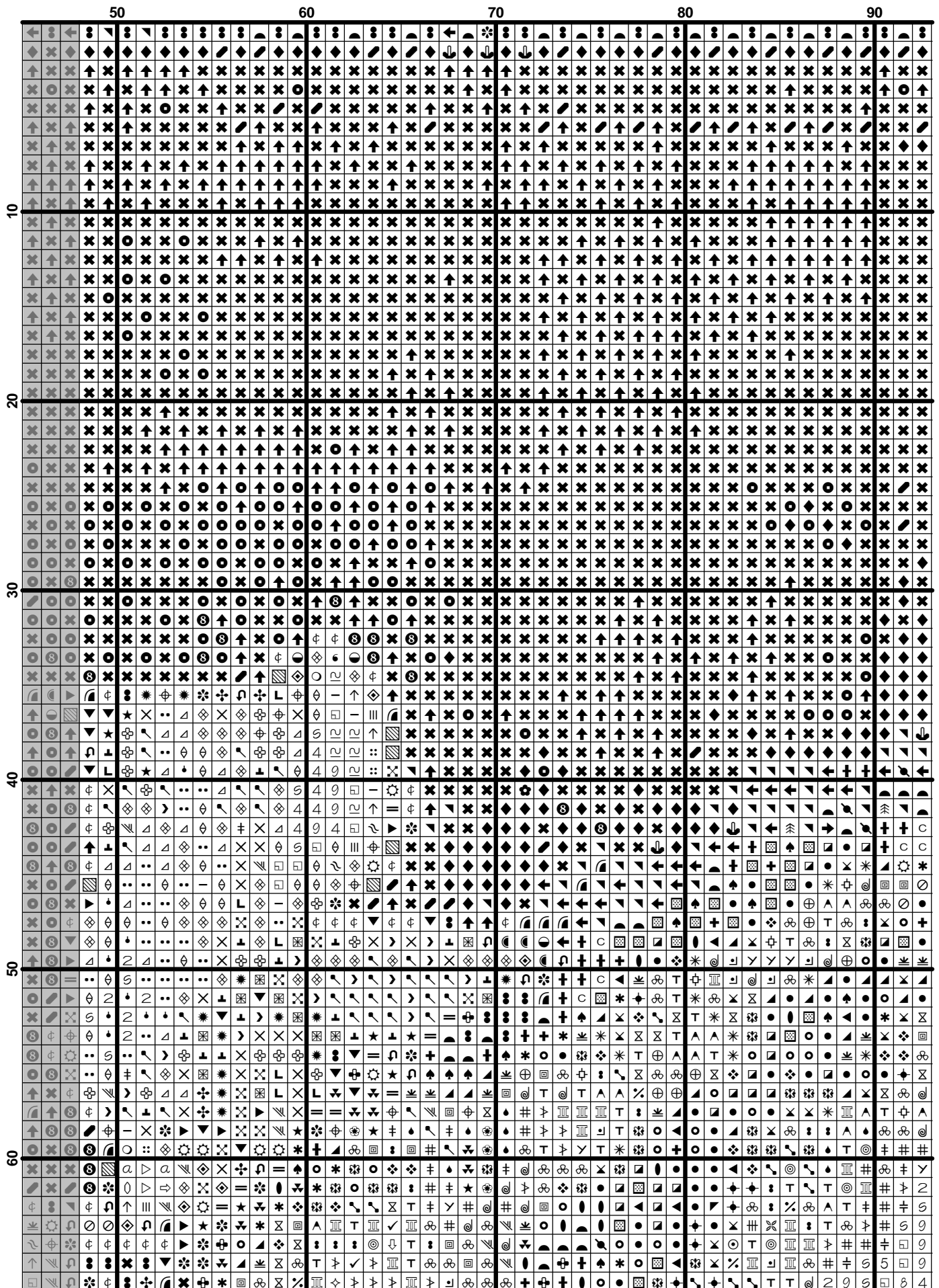
DMC	Name	Usage (cm)	Usage (inch)	Usage (cm)	Usage (inch)	Usage (cm)	Usage (inch)
		28		30		32	
223	Shell Pink-LT	30	12	28	11	26	10
224	Shell Pink-VY LT	6	2	5	2	5	2
225	Shell Pink-UL VY LT	6	2	6	2	6	2
310	Black	45	17	42	16	39	15
317	Pewter Gray	6	2	5	2	5	2
320	Pistachio Green-MD	36	14	34	13	32	12
367	Pistachio Green-DK	42	16	40	15	37	14
451	Shell Gray-DK	48	19	44	17	42	16
453	Shell Gray-LT	39	15	37	14	34	14
501	Blue Green-DK	75	30	70	28	66	26
502	Blue Green	24	9	22	8	21	8
503	Blue Green-MD	60	24	56	22	53	21
522	Fern Green	28	11	26	10	25	10
523	Fern Green-LT	88	34	82	32	77	30
524	Fern Green-VY LT	183	72	171	67	160	63
535	Ash Gray-VY LT	339	133	316	124	296	116
543	Beige Brown-UL VY LT	110	43	103	40	96	38
563	Jade-LT	21	8	19	7	18	7
564	Jade-VY LT	5	2	5	2	5	2
598	Turquoise-LT	3	1	2	1	2	1
612	Drab Brown-LT	52	20	49	19	46	17
613	Drab Brown-VY LT	123	48	115	45	107	42
632	Desert Sand-UL VY DK	3	1	3	1	3	1
640	Beige Gray-VY DK	341	134	318	125	298	117
642	Beige Gray-DK	170	66	158	62	149	58
644	Beige Gray-MD	177	69	165	65	155	61
645	Beaver Gray-VY DK	496	195	463	182	434	170
646	Beaver Gray-DK	290	114	271	106	254	100
647	Beaver Gray-MD	118	46	110	43	103	41
648	Beaver Gray-LT	122	48	114	44	107	42
712	Cream	109	42	101	40	95	37
746	Off White	63	24	59	23	55	21
747	Sky Blue-VY LT	29	11	27	10	25	10
762	Pearl Gray-VY LT	20	8	19	7	17	7
775	Baby Blue-VY LT	6	2	6	2	6	2
801	Coffee Brown-DK	1	1	1	1	1	1
822	Beige Gray-LT	199	78	186	73	174	69
823	Navy Blue-DK	2205	868	2058	810	1929	759
828	Blue-UL VY LT	6	2	5	2	5	2
839	Beige Brown-DK	134	52	125	49	117	46
840	Beige Brown-MD	263	104	245	97	230	91
841	Beige Brown-LT	240	94	224	88	210	82
842	Beige Brown-VY LT	55	21	51	20	48	19
844	Beaver Brown-UL DK	595	234	555	218	520	205
924	Gray Green--VY DK	1141	449	1065	419	998	393
926	Gray Green-MD	32	12	30	11	28	11
927	Gray Green-LT	45	17	42	16	39	15
930	Antique Blue-DK	12	5	11	4	10	4
931	Antique Blue-MD	5	1	4	1	4	1
932	Antique Blue-LT	12	5	11	4	10	4
934	Black Avocado Green	21	8	20	7	19	7
935	Avocado Green-DK	1529	602	1427	562	1338	527
939	Navy Blue-VY DK	732	288	683	269	641	252

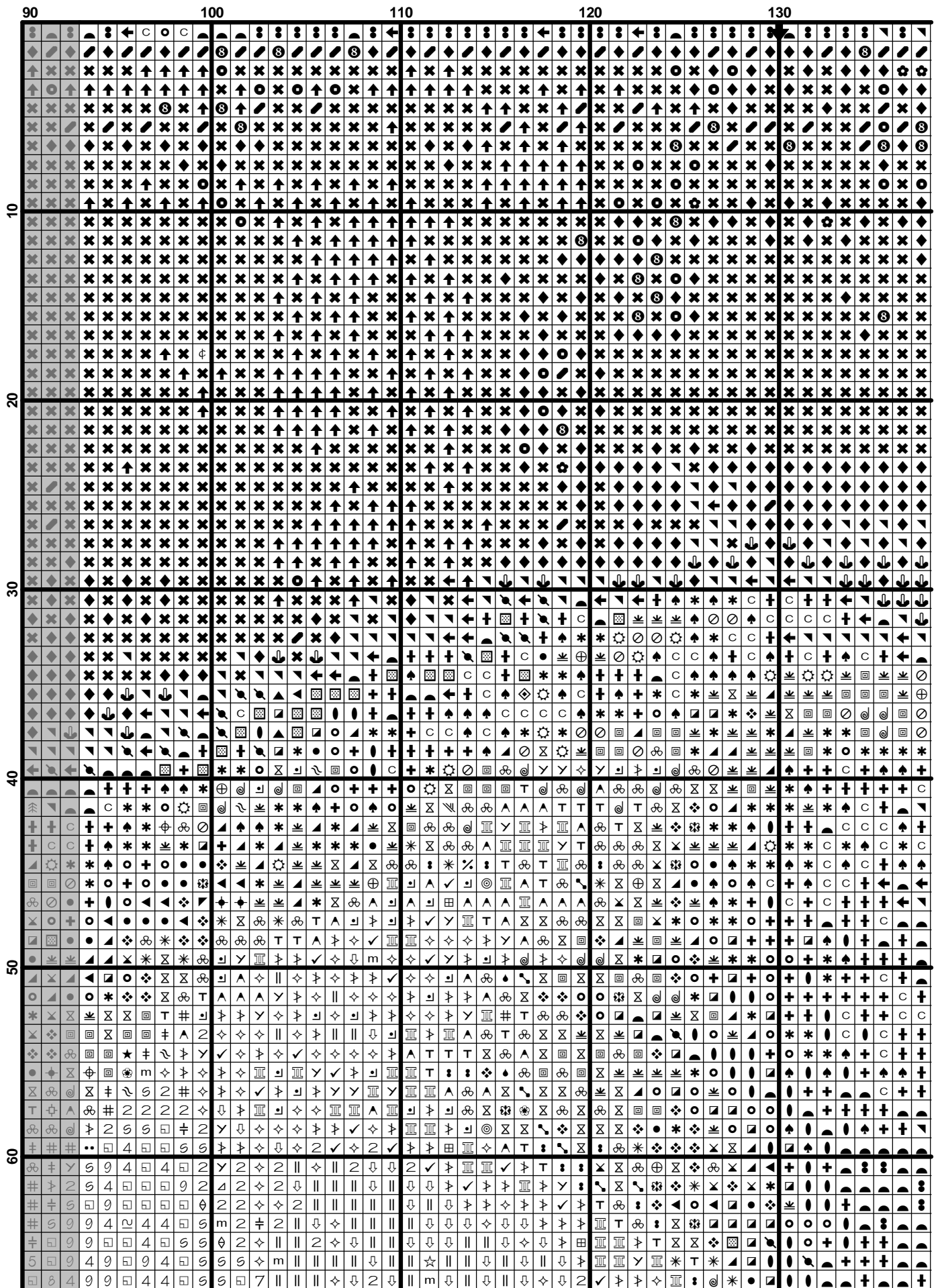
Copyright (c) 2007-, Golden Kite (Golden K.)

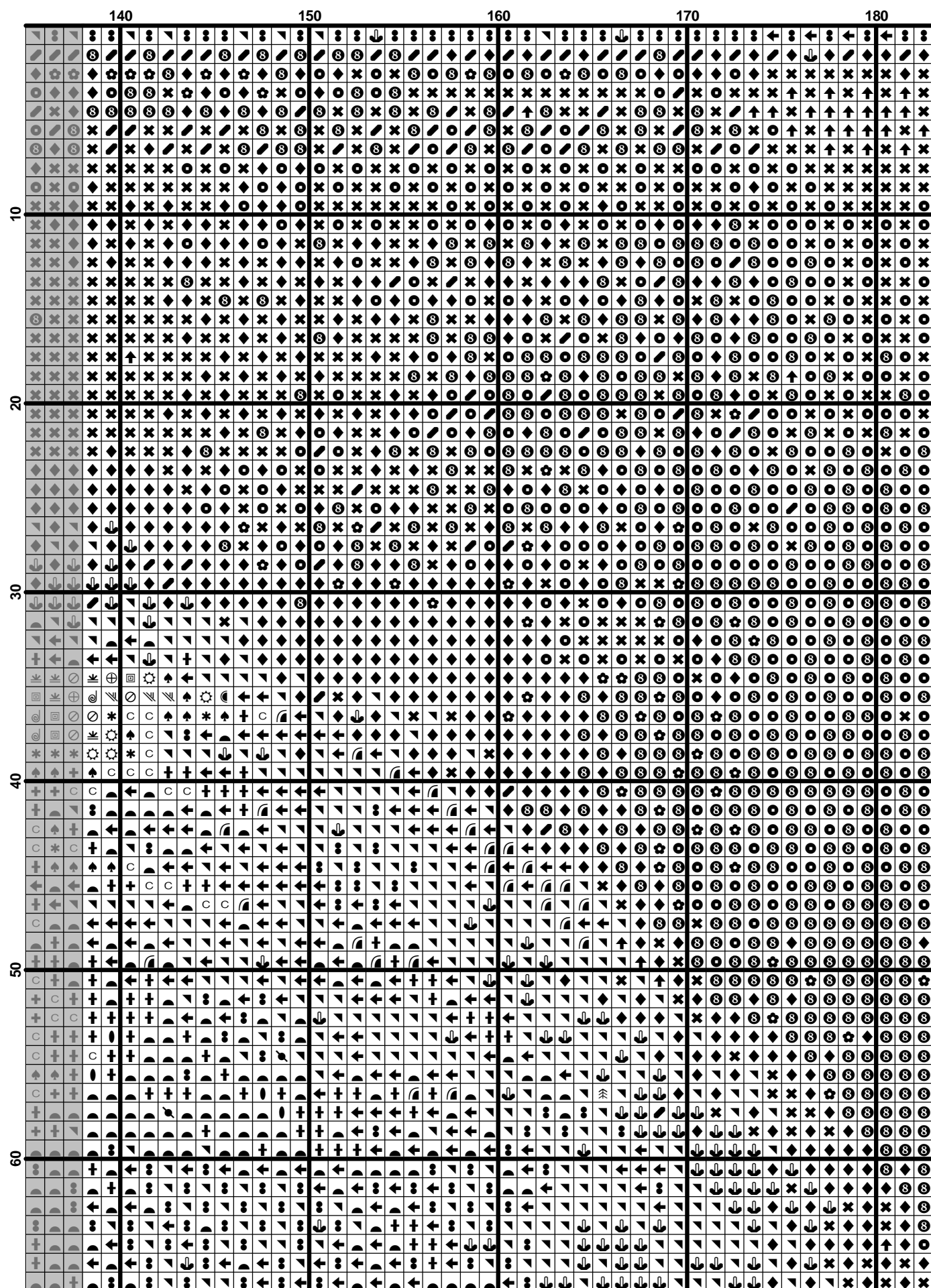
Internet: www.goldenkite.come-mail: info@goldenkite.com

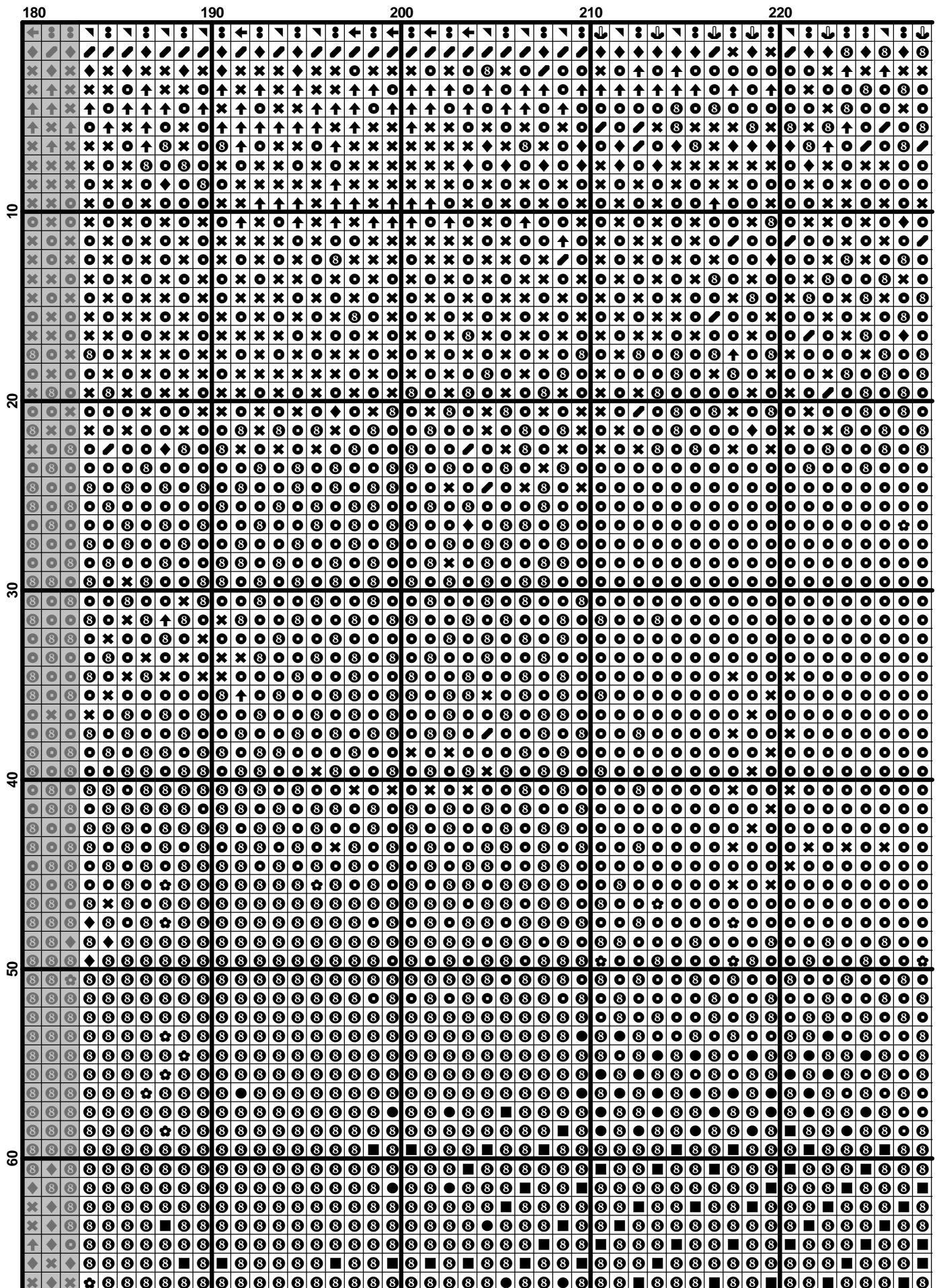
950	Desert Sand-LT	10	4	10	4	9	3
955	Nile Green-LT	99	39	92	36	87	34
966	Baby Green-MD	45	17	42	16	39	15
3021	Brown Gray-VY DK	236	93	220	86	206	81
3022	Brown Gray-MD	249	98	232	91	218	86
3023	Brown Gray-LT	176	69	164	64	154	60
3024	Brown Gray-VY LT	126	50	118	46	110	43
3031	Mocha Brown-VY DK	19	7	17	7	16	6
3032	Mocha Brown-MD	154	60	143	56	134	53
3033	Mocha Brown-VY LT	53	21	49	19	46	18
3052	Green Gray-MD	12	5	11	4	10	4
3072	Beaver Gray-VY LT	54	21	50	20	47	19
3362	Pine Green-DK	15	6	14	5	13	5
3363	Pine Green-MD	17	6	16	6	15	6
3713	Salmon-VY LT	24	9	22	8	21	8
3726	Antique Mauve-DK	26	10	25	10	23	9
3750	Antique Blue-VY DK	19	7	17	7	16	6
3752	Antique Blue-VY LT	15	6	14	5	13	5
3756	Baby Blue-UL VY LT	109	42	102	40	96	37
3768	Gray Green-DK	19	7	17	7	16	6
3770	Tawny-VY LT	4	1	4	1	3	1
3781	Mocha Brown-DK	4	1	4	1	3	1
3782	Mocha Brown-LT	105	41	98	38	92	36
3787	Brown Gray-DK	424	167	396	155	371	146
3790	Beige Gray-UL DK	70	27	65	25	61	24
3799	Pewter Gray-VY DK	1315	518	1228	483	1151	453
3811	Turquoise-VY LT	9	3	8	3	8	3
3815	Celadon Green-DK	32	12	29	11	28	11
3816	Celadon Green-MD	11	4	10	4	10	3
3848	Teal Green-MD	3	1	2	1	2	1
3849	Teal Green-LT	5	2	5	2	5	2
3860	Cocoa	216	85	202	79	189	74
3861	Cocoa-LT	50	19	46	18	43	17
3862	Mocha Beige-DK	16	6	15	5	14	5
3863	Mocha Beige-MD	71	28	67	26	62	24
3864	Mocha Beige-LT	273	107	255	100	239	94
3865	Winter White	88	34	82	32	77	30
3866	Mocha Brown-UL VY LT	194	76	181	71	170	66
ecru	Ecru	233	91	217	85	204	80

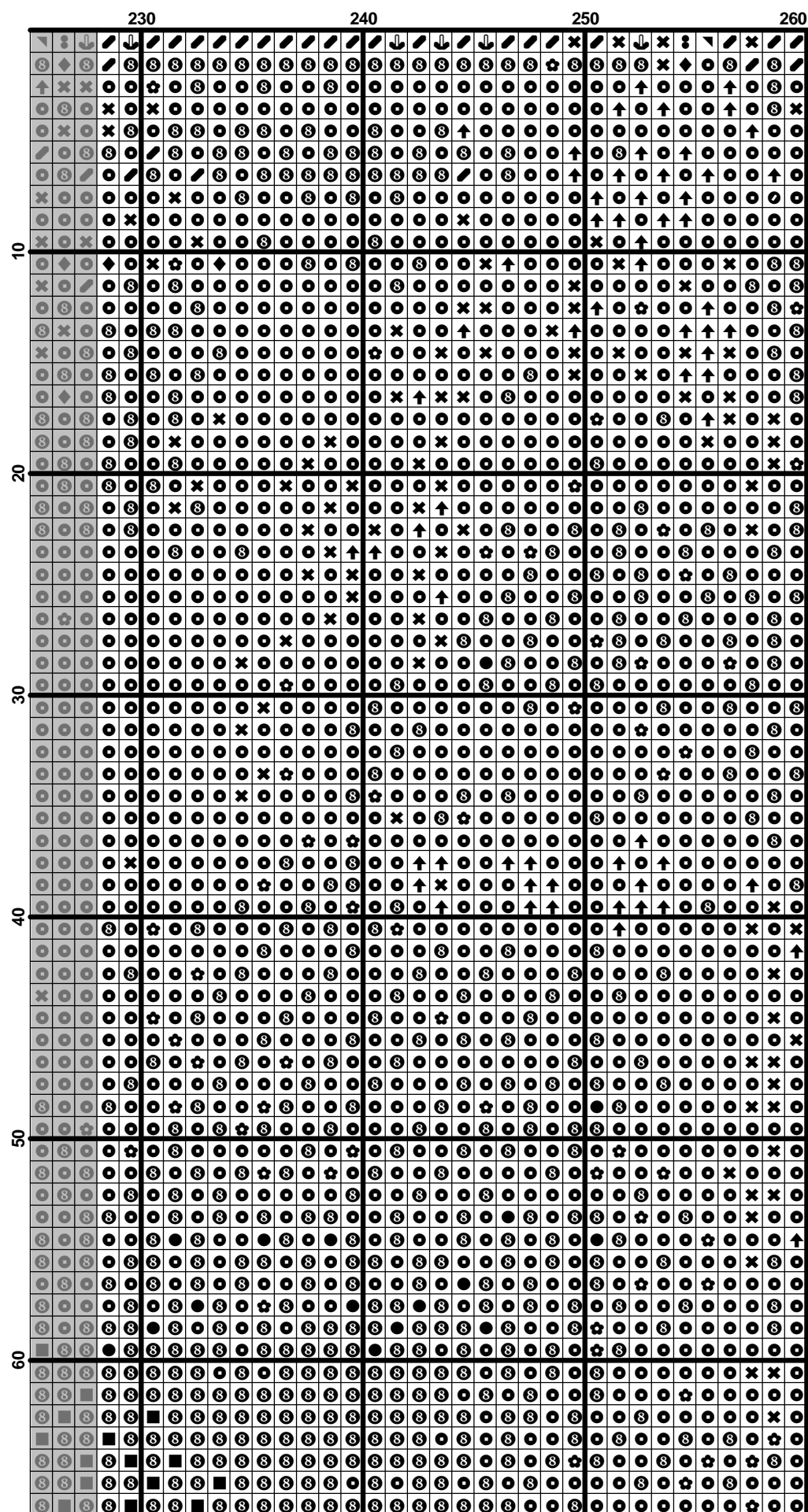


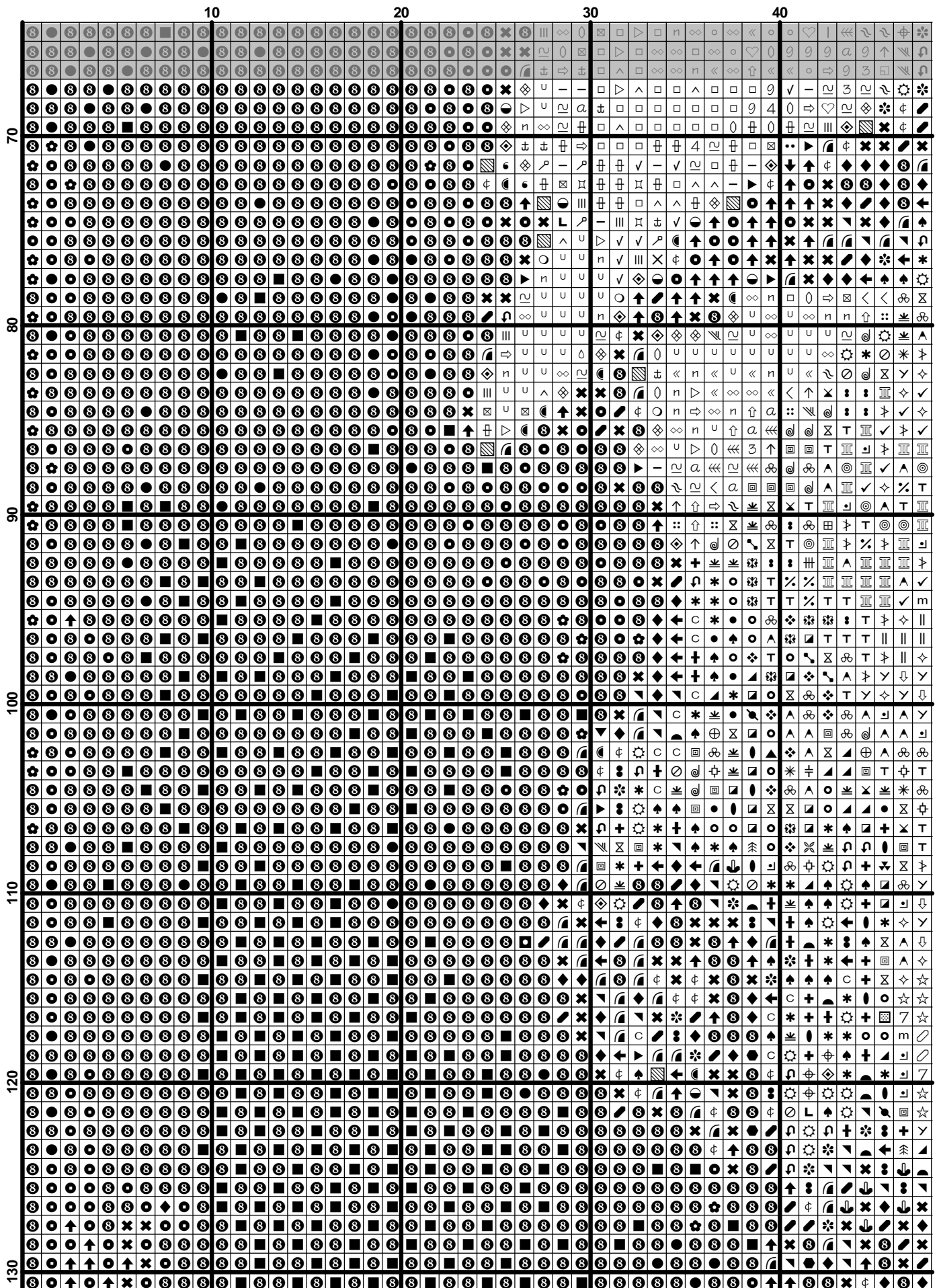


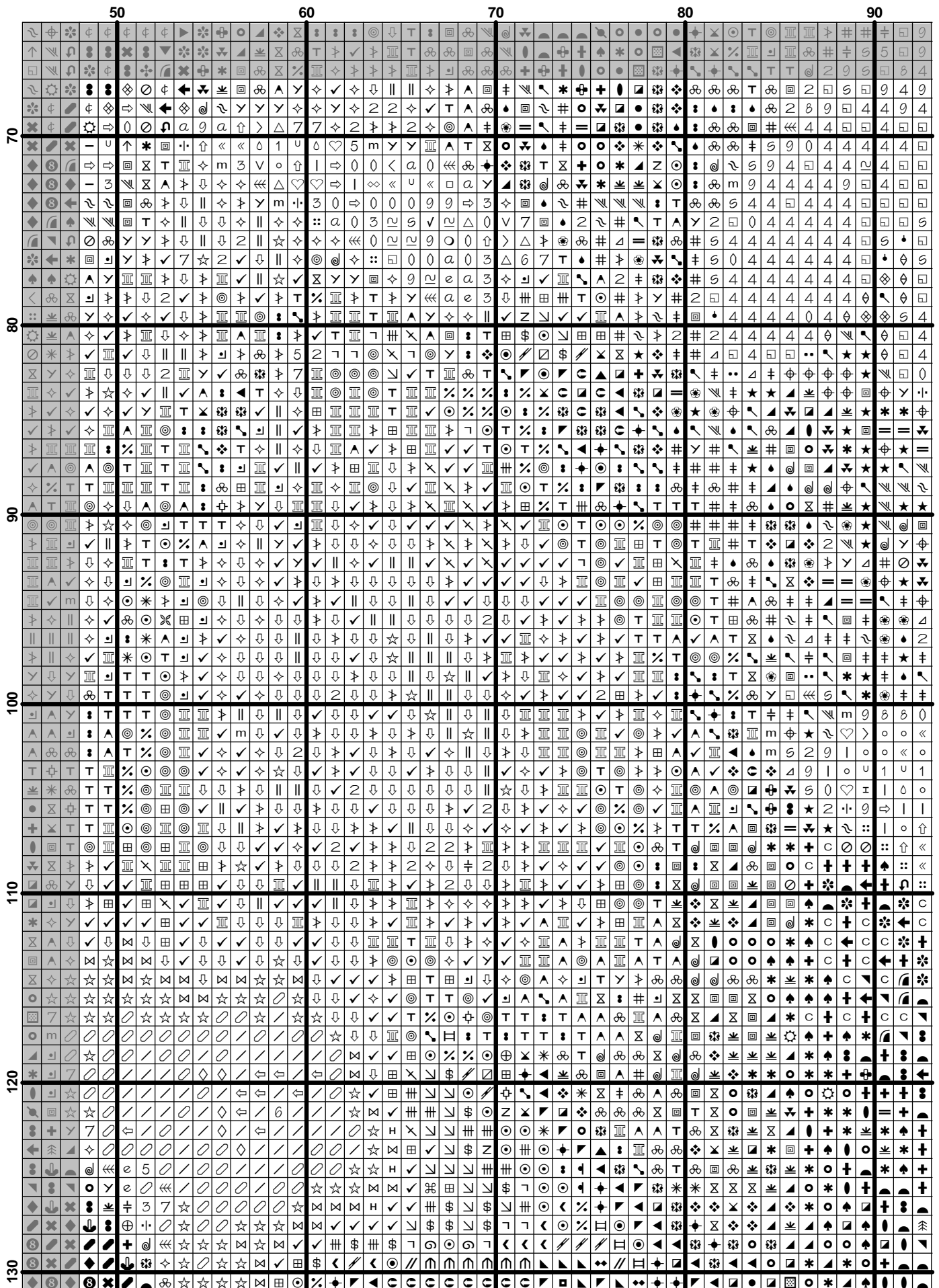




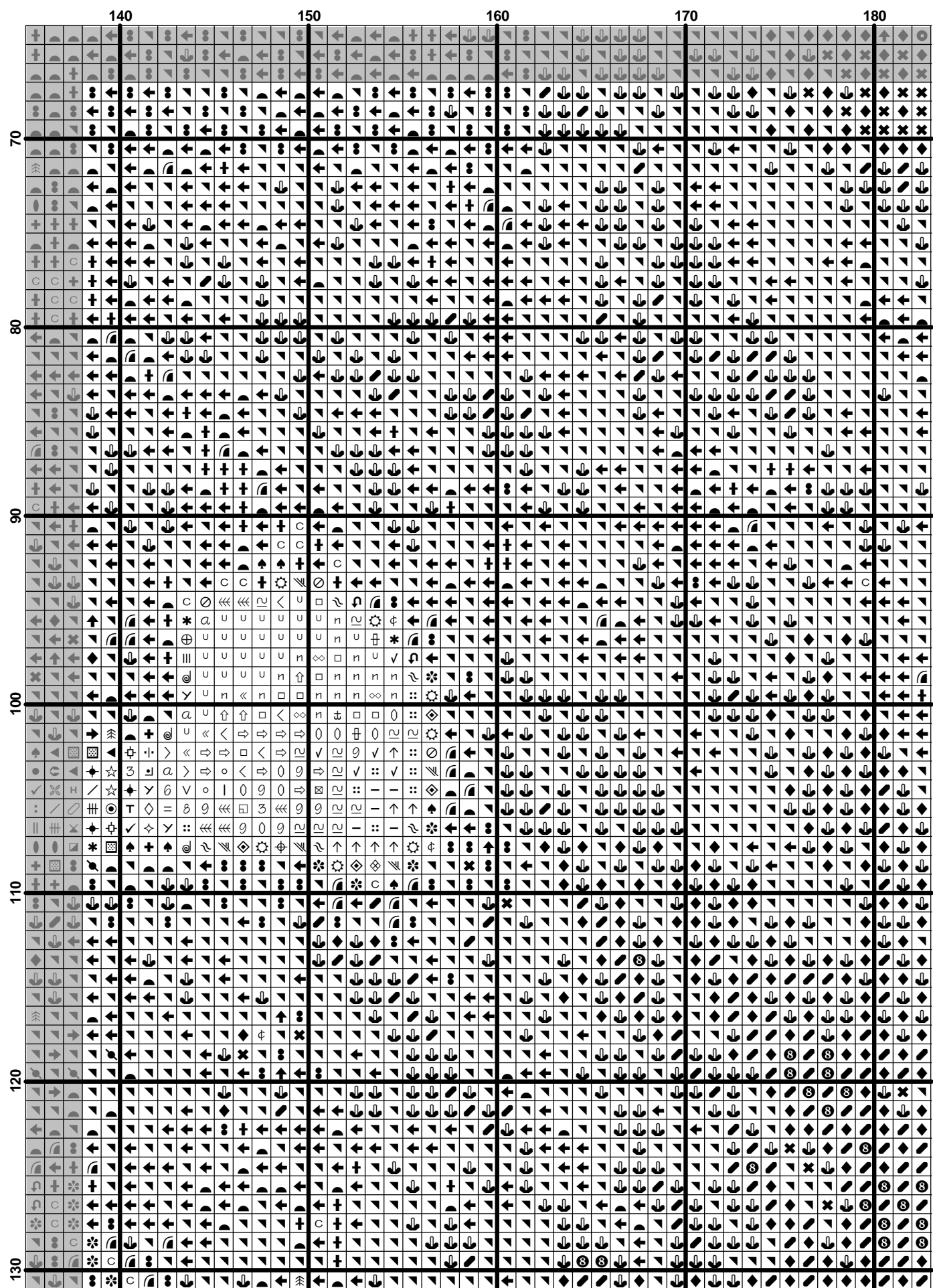


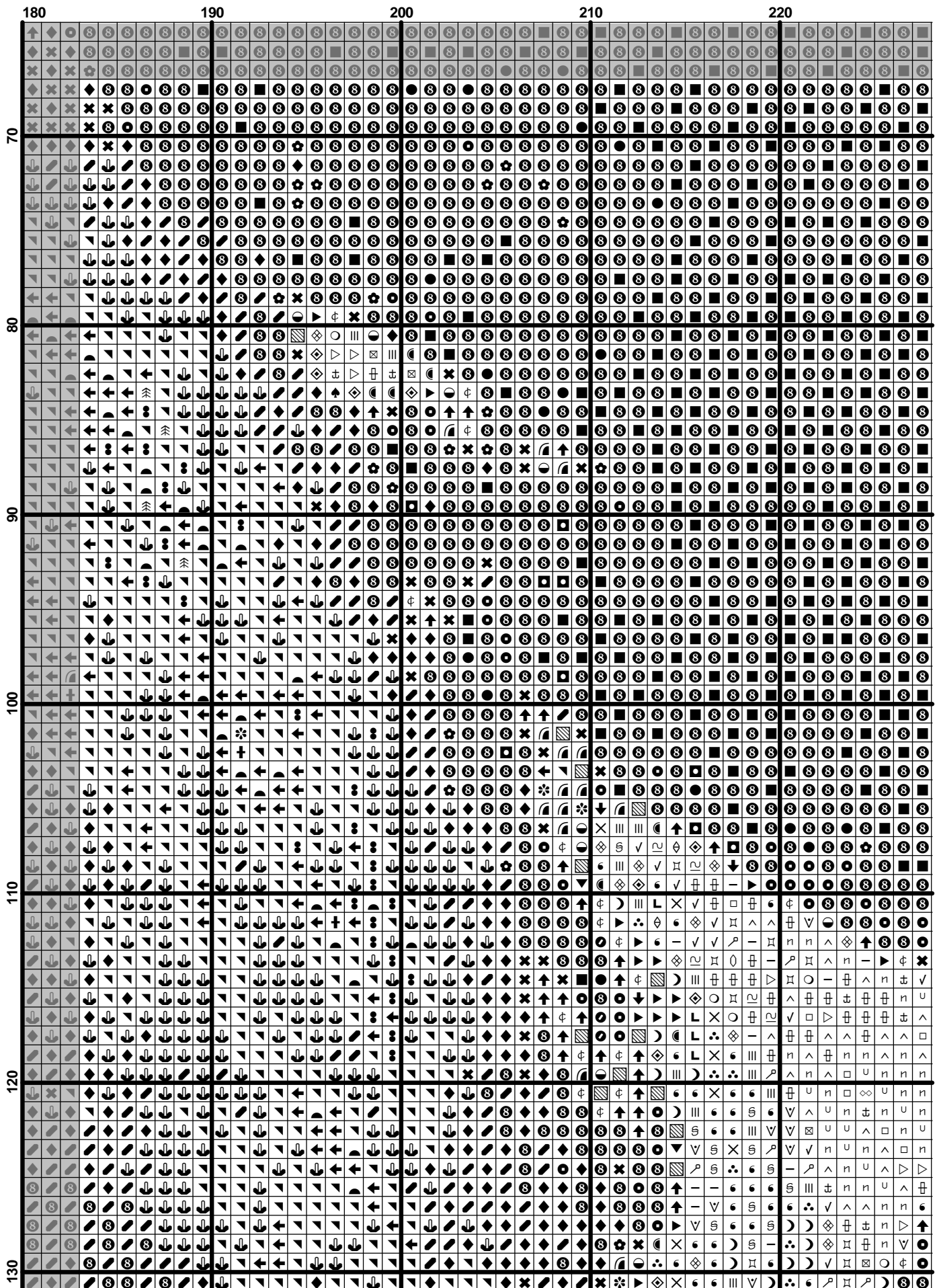


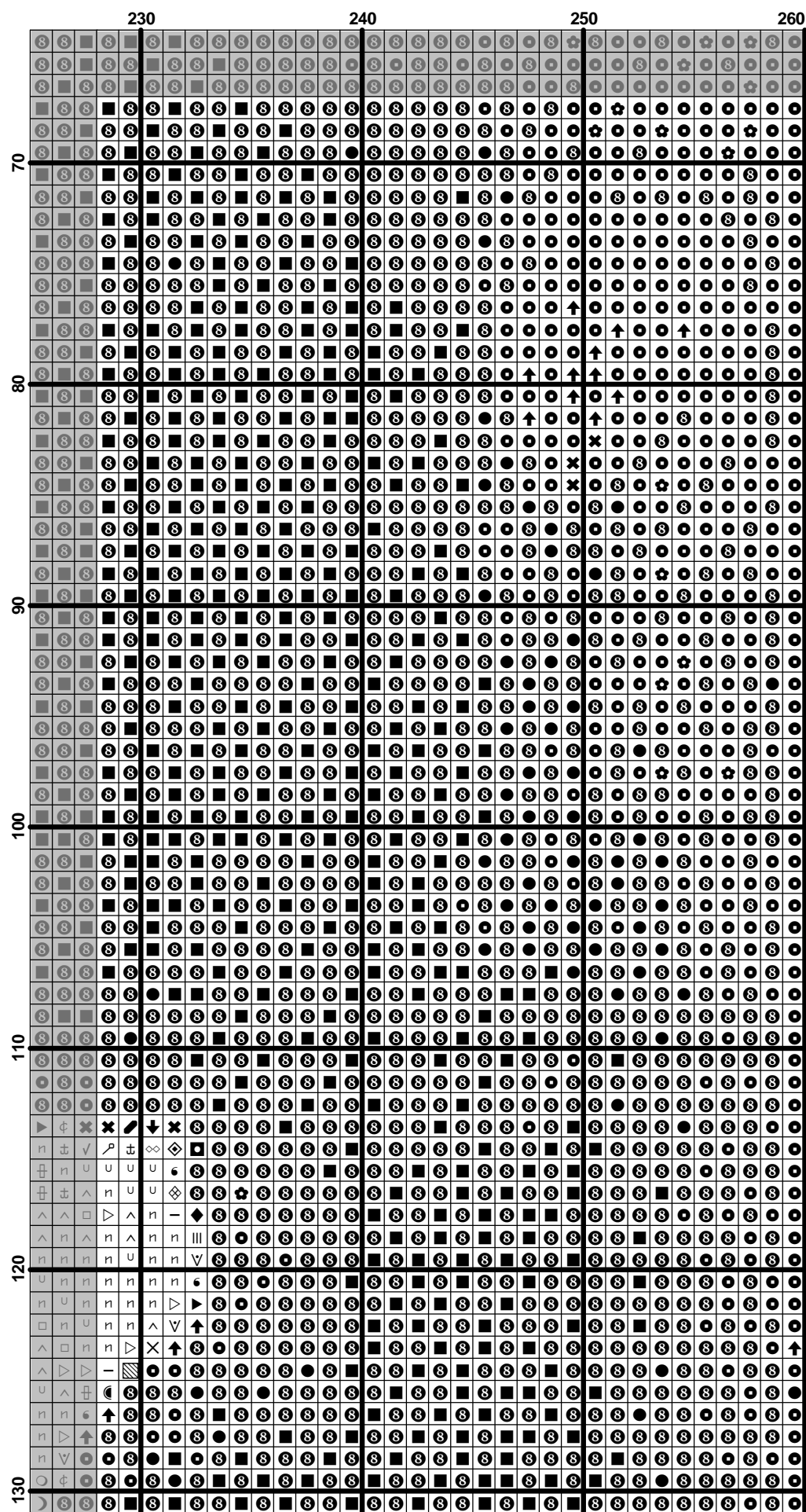


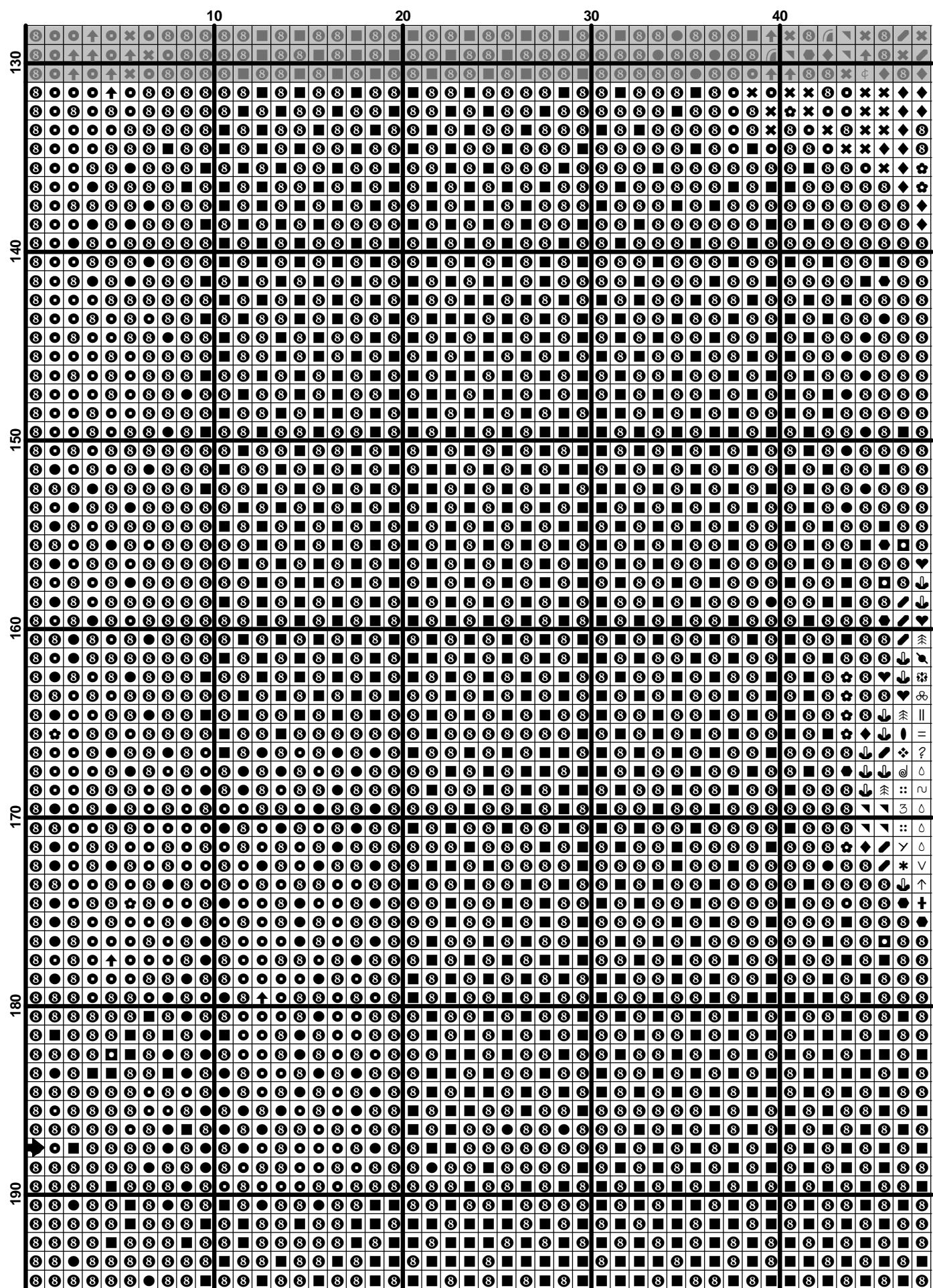


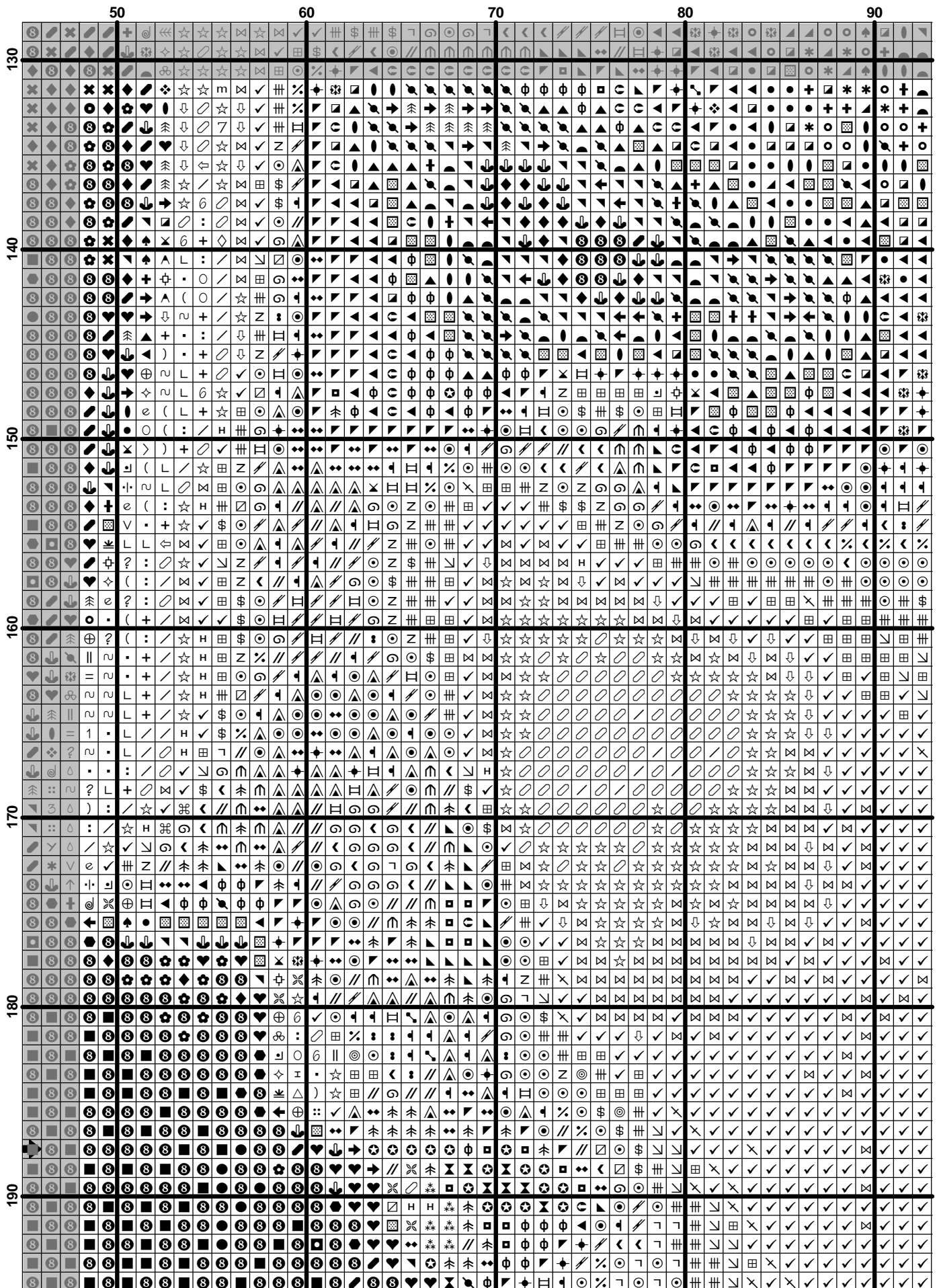
$$(15) \quad \frac{1}{\Gamma(\alpha)} \int_0^t (t-s)^{\alpha-1} f(s) ds = \frac{1}{\Gamma(\alpha)} \int_0^t (t-s)^{\alpha-1} g(s) ds + \frac{1}{\Gamma(\alpha)} \int_0^t (t-s)^{\alpha-1} h(s) ds$$

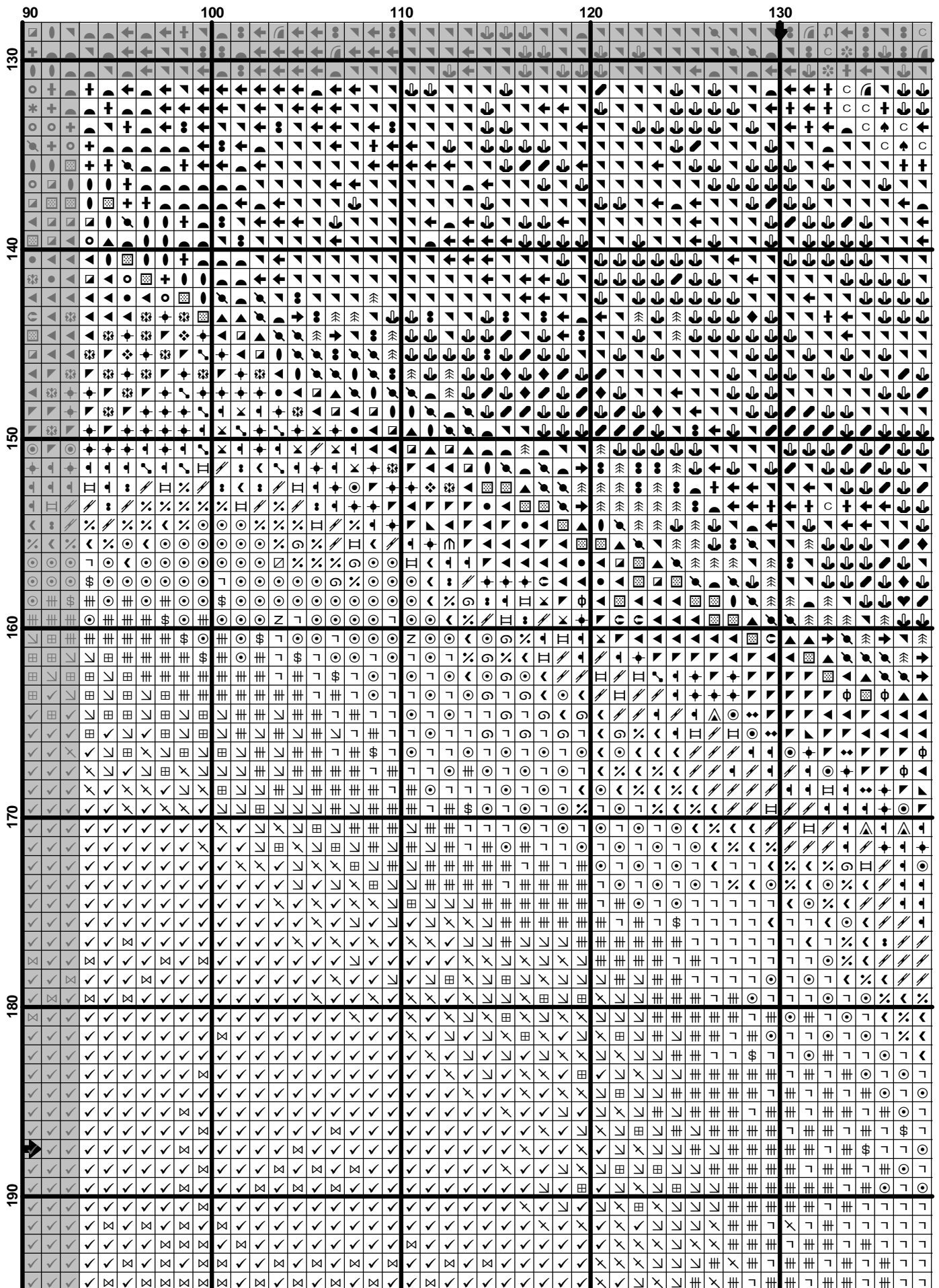


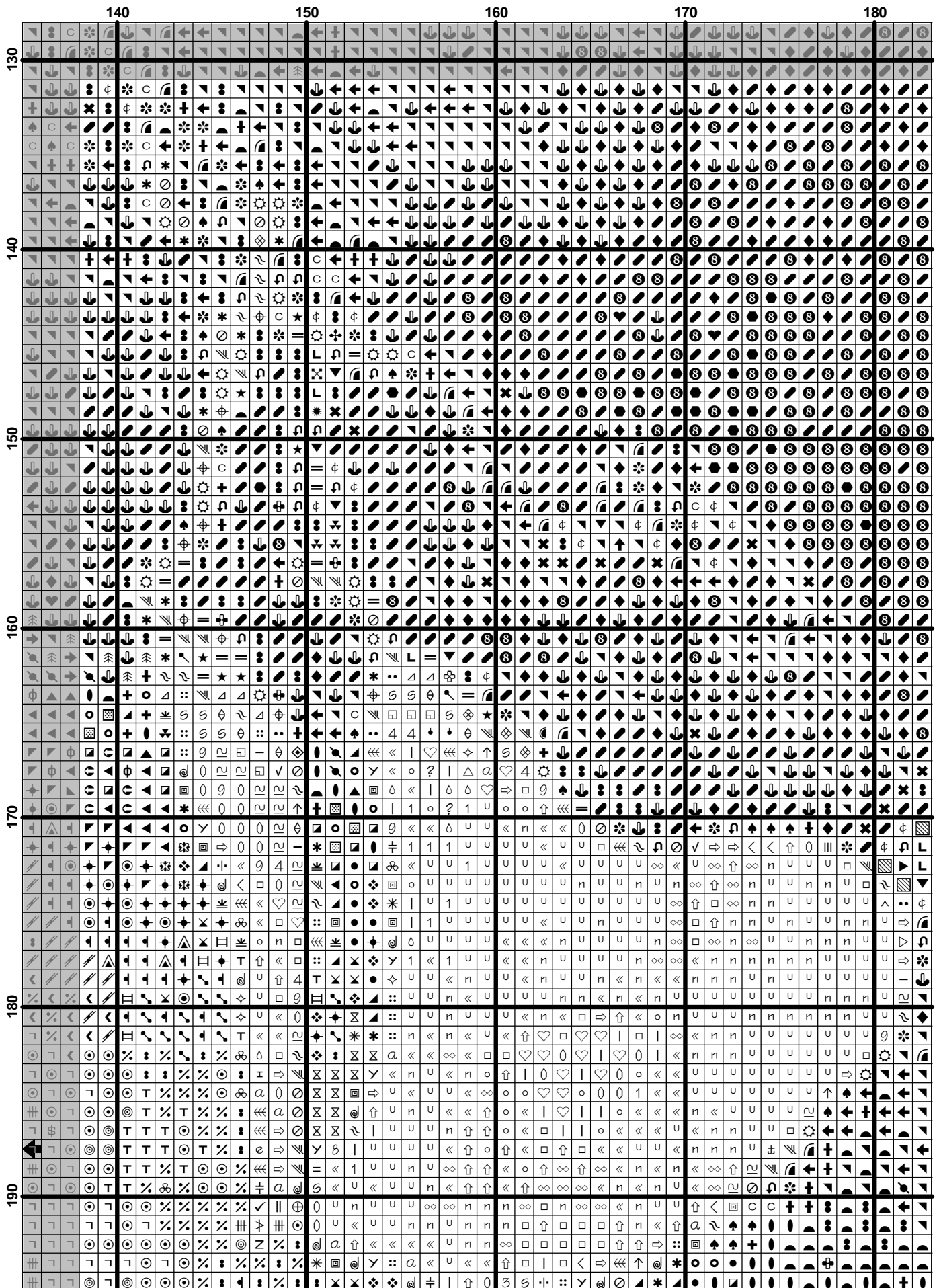




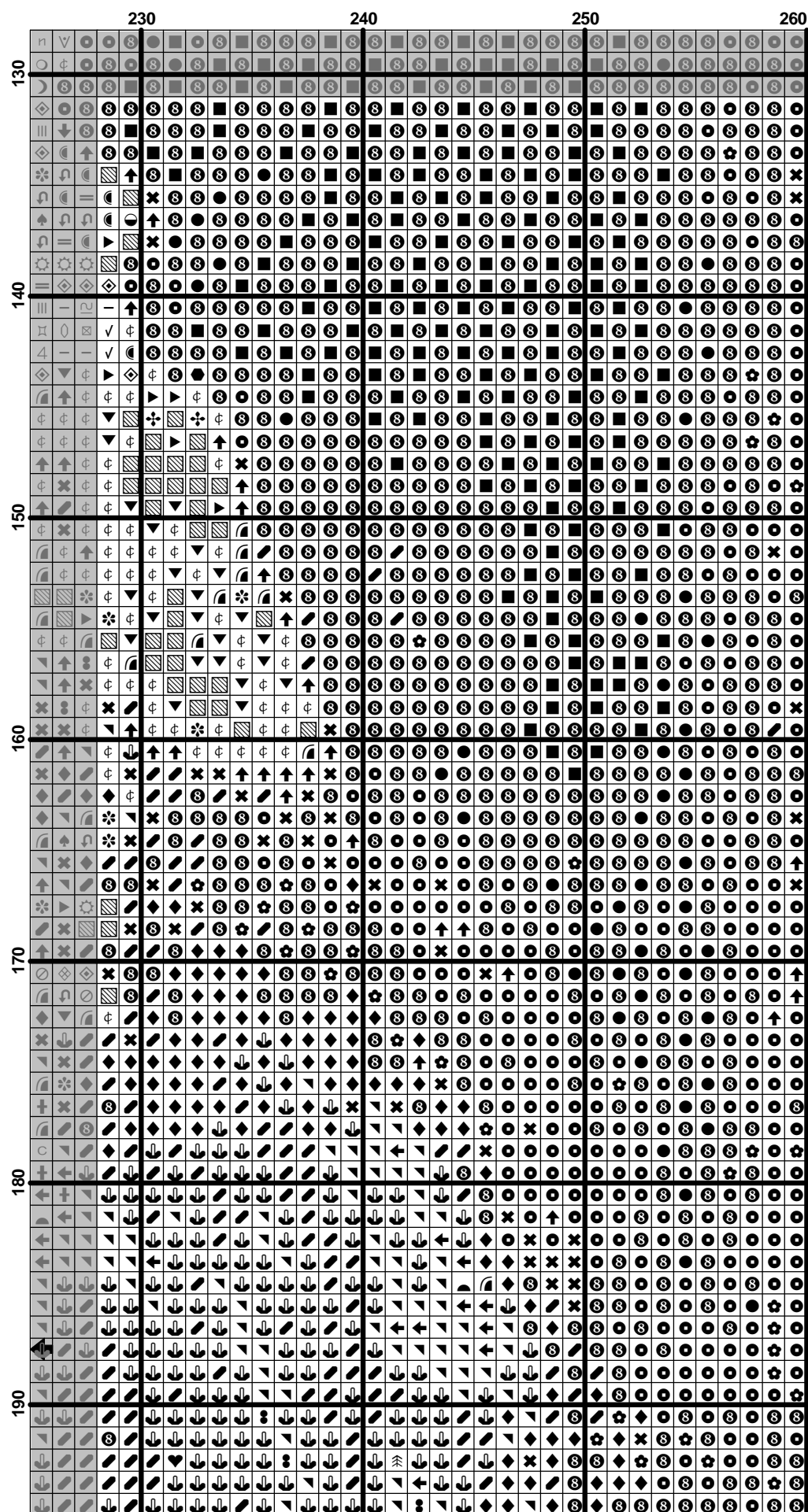


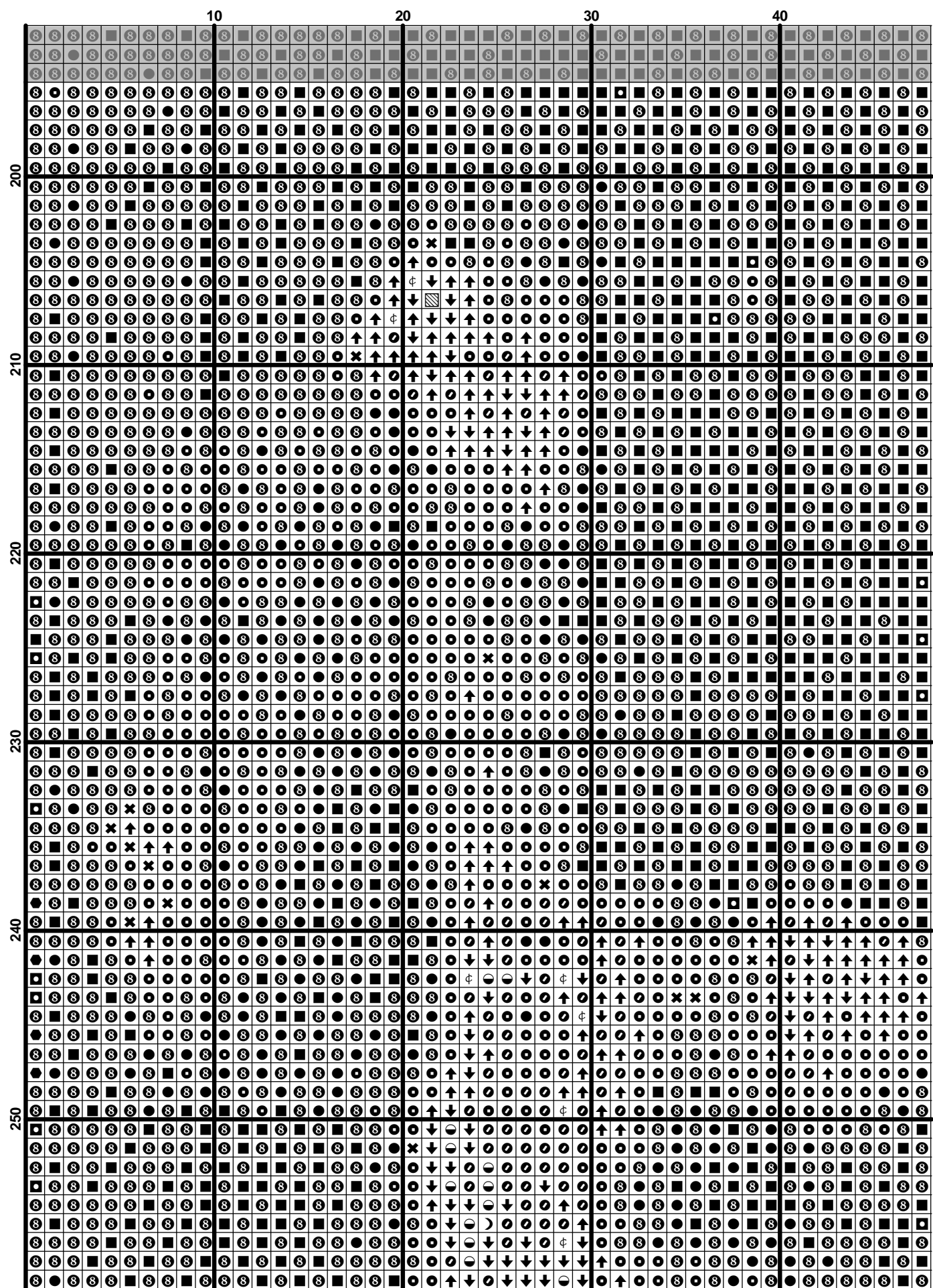


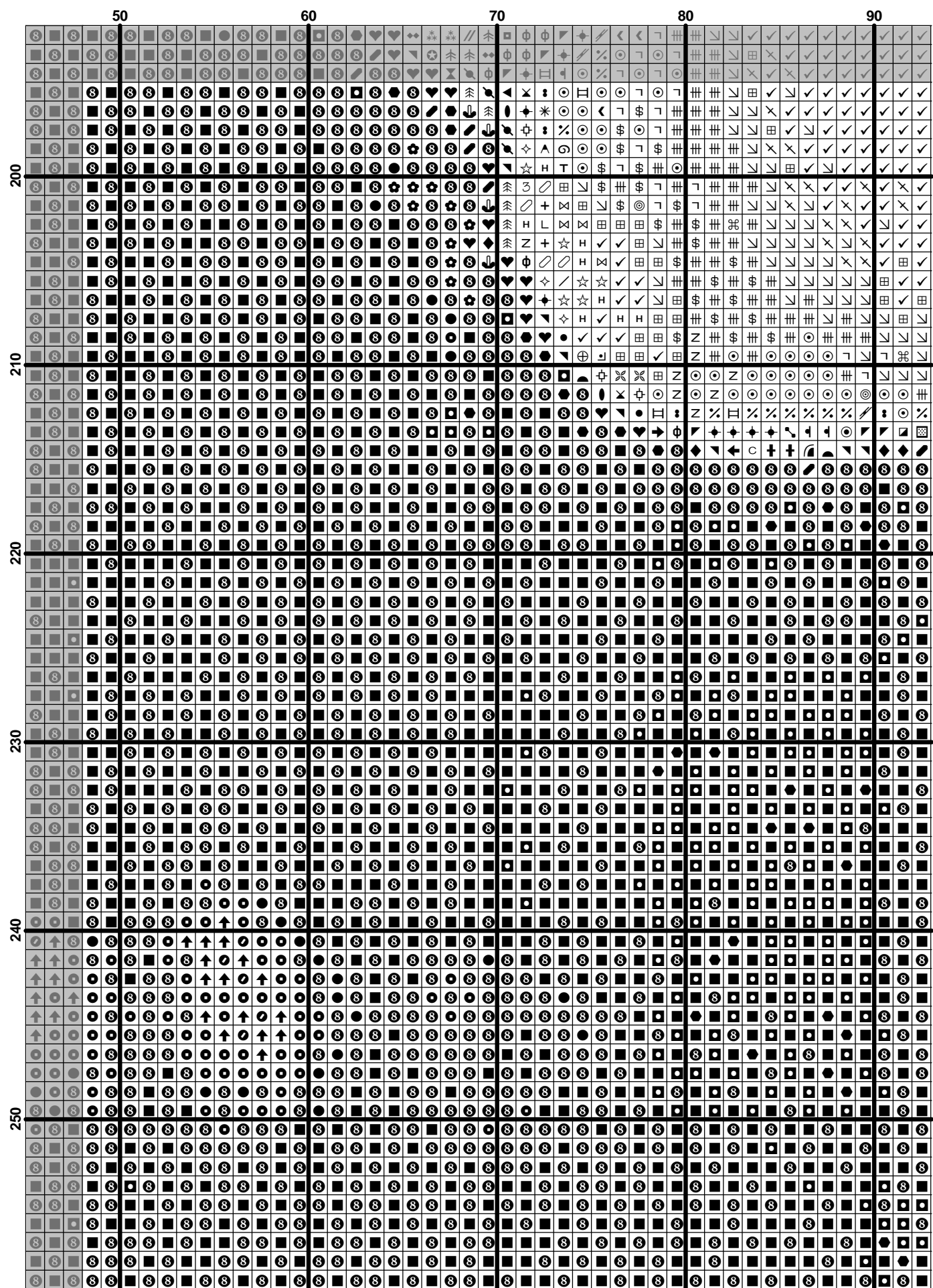


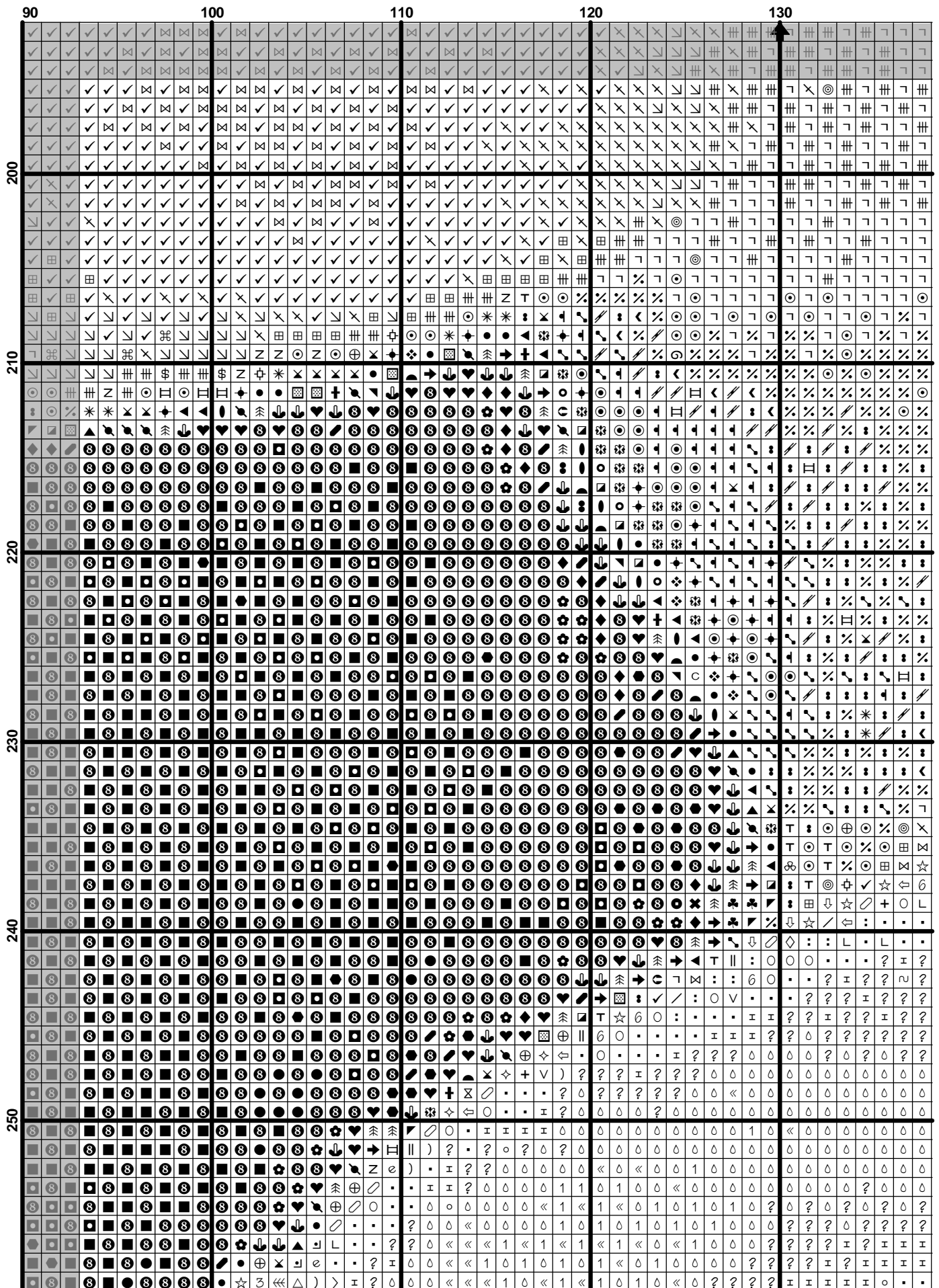




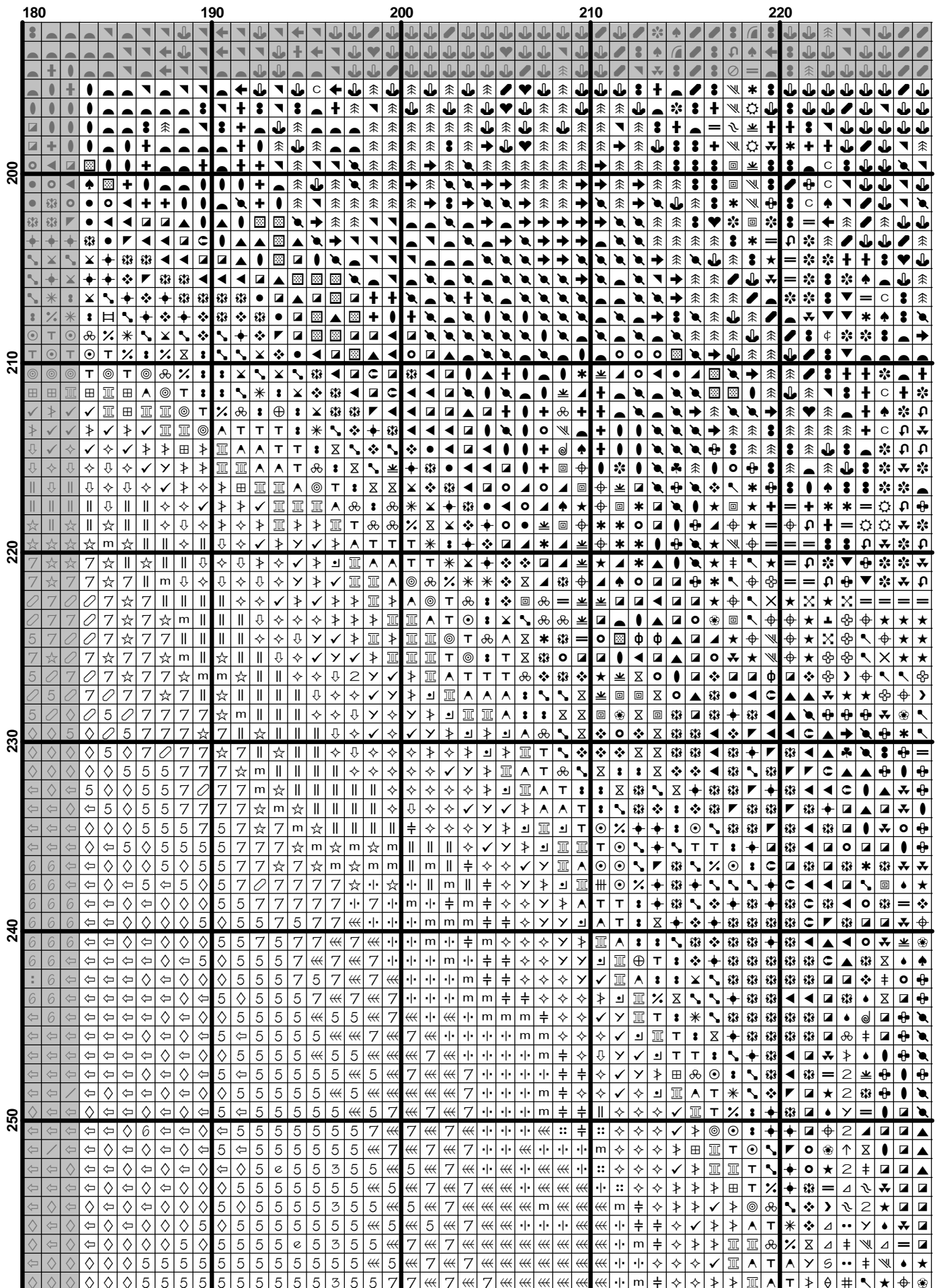


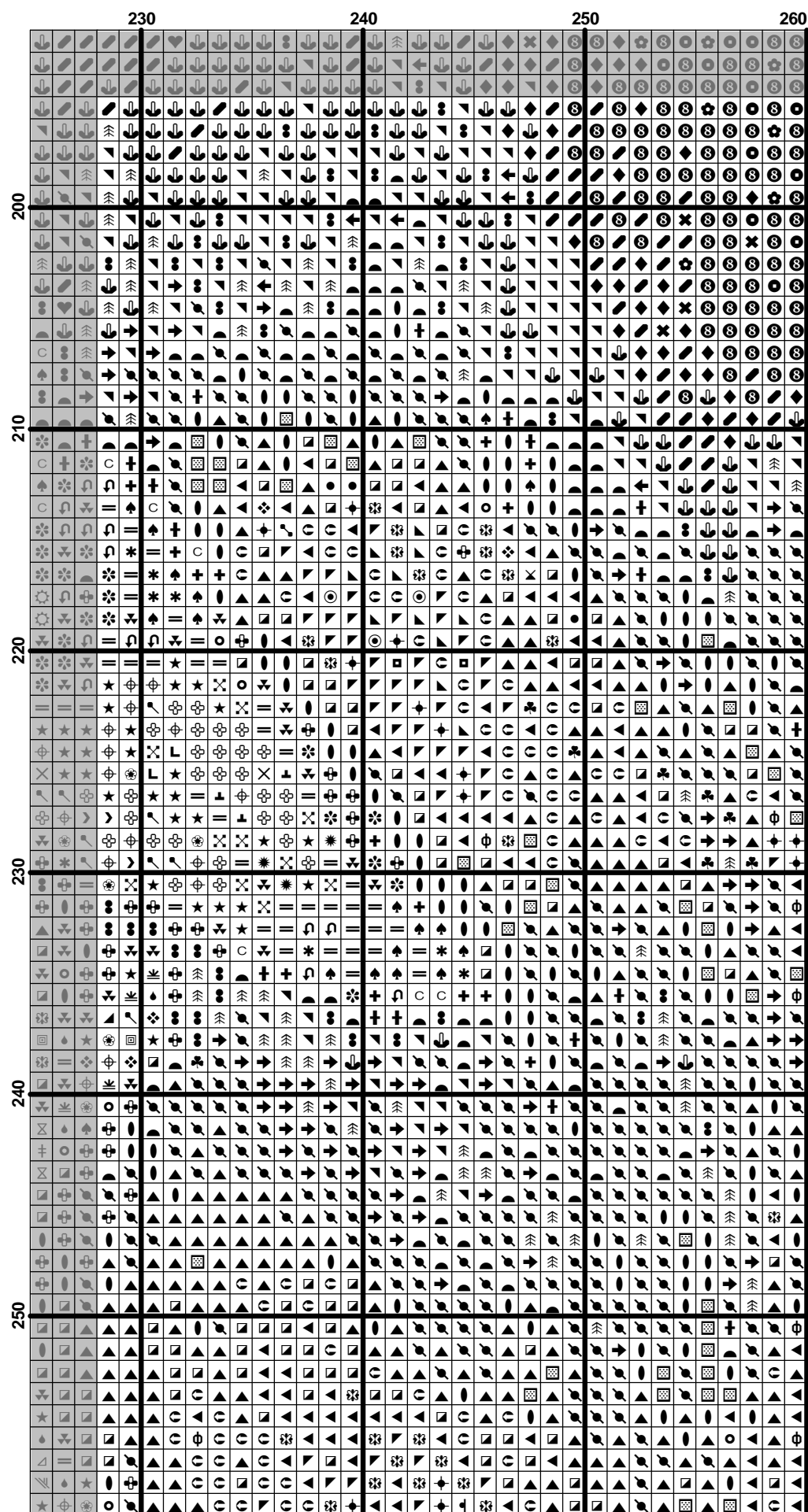


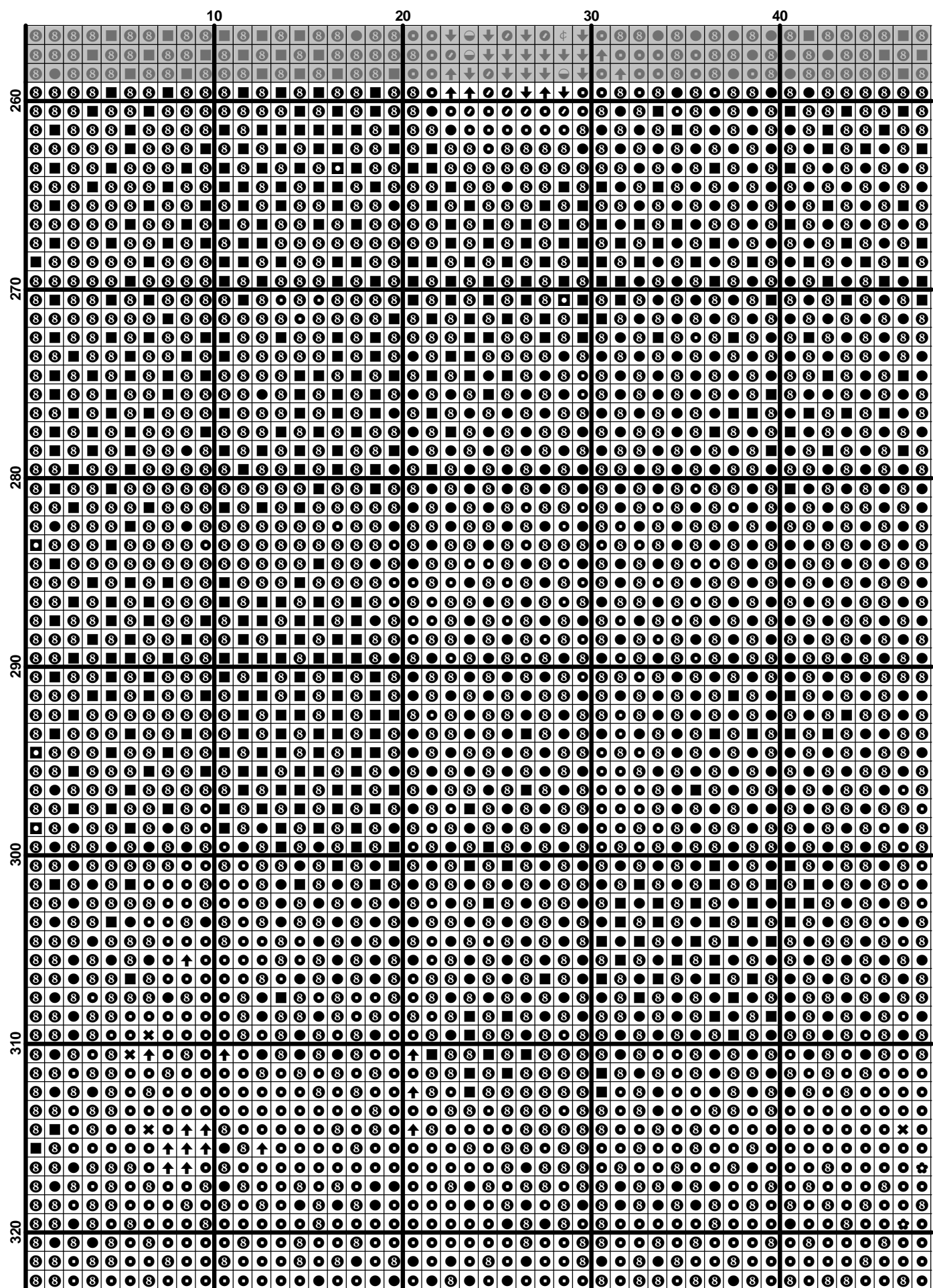


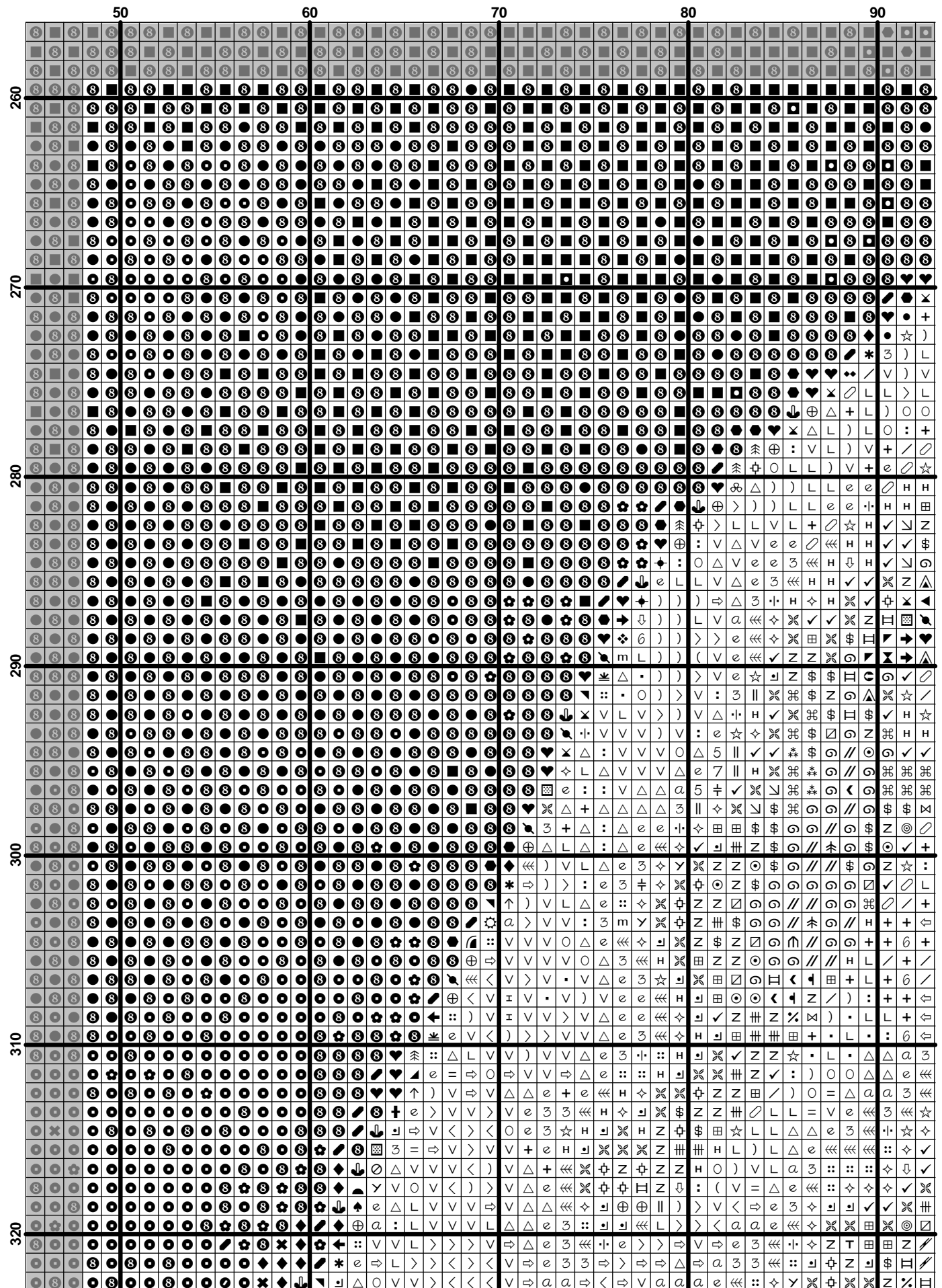


$$(28) \quad \mathcal{L}(\mathcal{A}) = \mathcal{L}(\mathcal{B}) \quad (29)$$





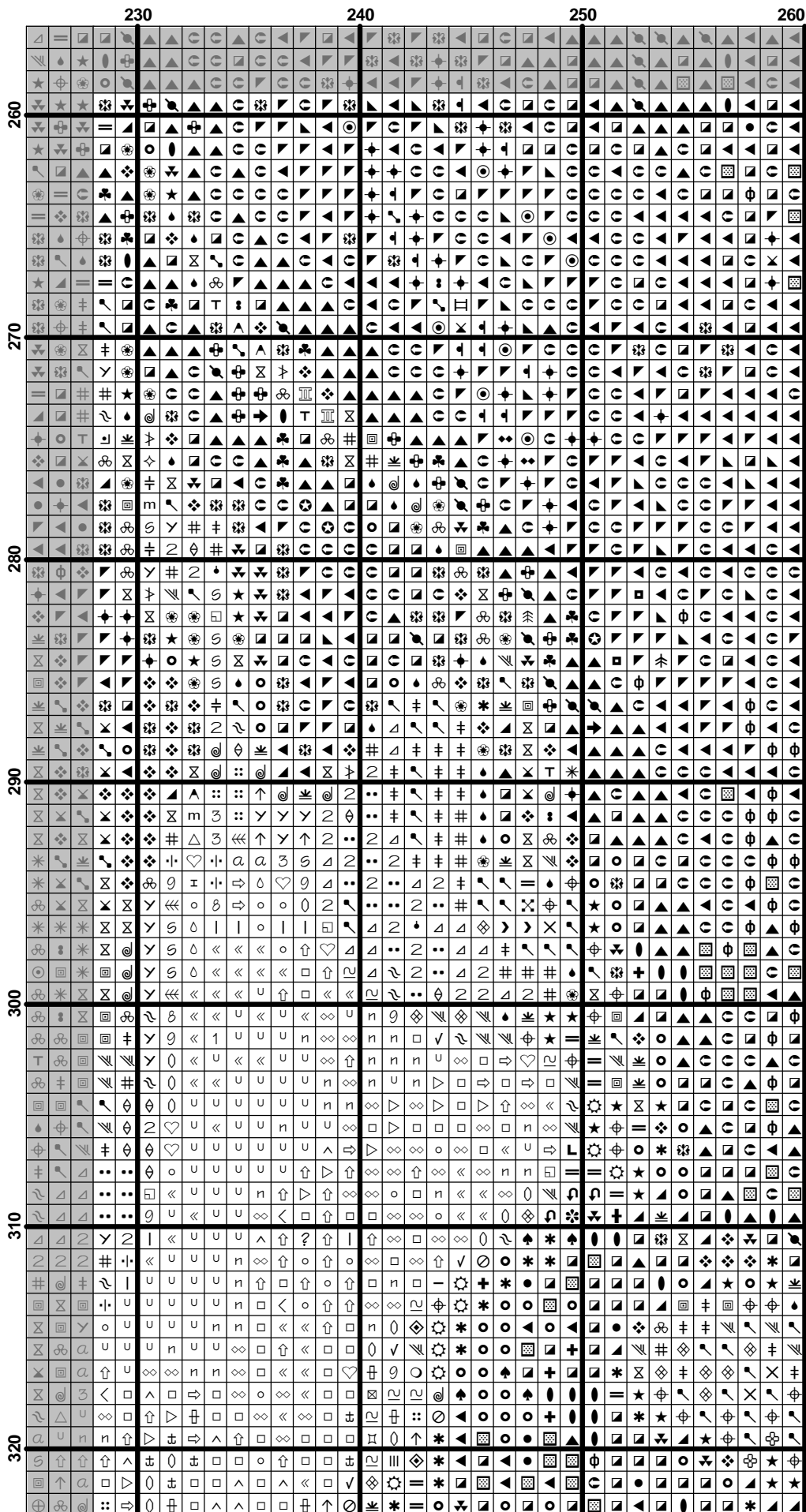


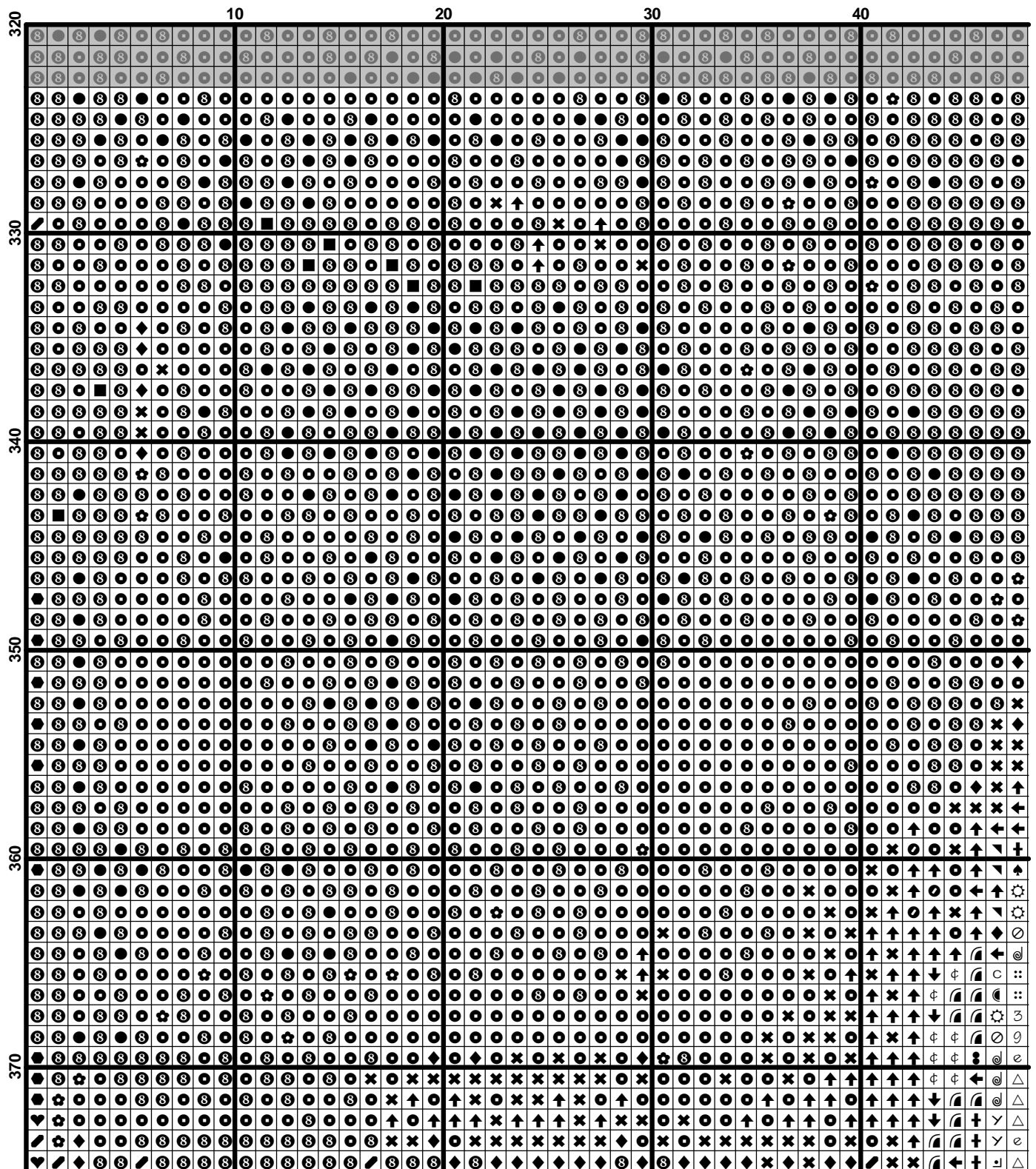


(34)

(35)

$$(35) \quad \frac{1}{\Gamma(\alpha)} \int_0^t (t-s)^{\alpha-1} f(s) ds = \frac{1}{\Gamma(\alpha)} \int_0^t (t-s)^{\alpha-1} \left(\sum_{k=0}^\infty \frac{(t-s)^k}{k!} f^{(k)}(s) \right) ds$$





	50										60										70										80										90																																																	
320																																																																																										
330																																																																																										
340																																																																																										
350																																																																																										
360																																																																																										
370																																																																																										

[illegible]

