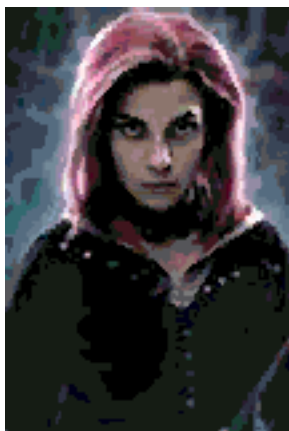


Dark Lilac Cross Stitch Chart

Created 01/31/2008

<http://www.darklilac.com>

This chart is covered by the Creative Commons ShareALike License 2.0. For more information see: <http://creativecommons.org/licenses/by-nc-sa/2.0/>



Stitch Count: 108 x 160 Thread Count: 60 colors

14 count: 7.7 x 11.4 in 25 count: 4.3 x 6.4 in

16 count: 6.8 x 10 in 28 count: 3.9 x 5.7 in

18 count: 6 x 8.9 in 32 count: 3.4 x 5 in

22 count: 4.9 x 7.3 in

| Symbol | Stitches per Color | DMC | Color |
|--------|--------------------|------------|----------------------------|
| × | 2 | 807 | Peacock Blue |
| + | 2 | 3839, 209 | 2 Blended Threads |
| * | 2 | 340, 601 | 2 Blended Threads |
| * | 3 | 310, 309 | 2 Blended Threads |
| ✱ | 4 | 794 | Light Cornflower Blue |
| * | 5 | 895, 304 | 2 Blended Threads |
| ■ | 6 | 3072, 304 | 2 Blended Threads |
| ♣ | 6 | 553 | Violet |
| ♦ | 7 | 3052 | Medium Green Gray |
| ♠ | 8 | 796, 3805 | 2 Blended Threads |
| ⑦ | 8 | 336 | Navy Blue |
| ★ | 10 | 310, 777 | 2 Blended Threads |
| ▲ | 14 | 604 | Light Cranberry |
| ▼ | 14 | 153, 3841 | 2 Blended Threads |
| ▷ | 15 | 775, 3806 | 2 Blended Threads |
| → | 16 | 799 | Medium Delft Blue |
| ↗ | 16 | 3761 | Light Sky Blue |
| ▽ | 17 | 310, 3750 | 2 Blended Threads |
| # | 19 | 3023 | Light Brown Gray |
| ☐ | 22 | 3072, 718 | 2 Blended Threads |
| ♥ | 23 | 310, 167 | 2 Blended Threads |
| % | 24 | 3802, 779 | 2 Blended Threads |
| & | 26 | 3862, 718 | 2 Blended Threads |
| ? | 29 | 3806, 3841 | 2 Blended Threads |
| (| 29 | 820 | Very Dark Royal Blue |
| + | 31 | 208 | Very Dark Lavender |
| - | 41 | 3756 | Ultra Very Light Baby Blue |
| / | 51 | 818 | Baby Pink |
| : | 57 | 934, 3011 | 2 Blended Threads |
| < | 64 | 3072, 3837 | 2 Blended Threads |
| ≥ | 70 | 3863, 3685 | 2 Blended Threads |
| = | 76 | 605, 159 | 2 Blended Threads |
| Δ | 80 | 3608, 3752 | 2 Blended Threads |

| | | | |
|---|-------|-----------|------------------------|
| ! | 94 | 3863 | Medium Mocha Beige |
| Φ | 95 | 340, 919 | 2 Blended Threads |
| Γ | 102 | 3863, 550 | 2 Blended Threads |
| Θ | 108 | 517, 535 | 2 Blended Threads |
| Σ | 126 | 646 | Dark Beaver Gray |
| ς | 127 | 310, 939 | 2 Blended Threads |
| π | 138 | 554 | Light Violet |
| Ω | 148 | 3834 | Dark Grape |
| Ξ | 155 | 310, 3850 | 2 Blended Threads |
| Ψ | 168 | 160, 400 | 2 Blended Threads |
| ∴ | 174 | 823, 3031 | 2 Blended Threads |
| l | 191 | 826 | Medium Blue |
| ↑ | 198 | 3072, 553 | 2 Blended Threads |
| l | 199 | 3072, 221 | 2 Blended Threads |
| ⊥ | 205 | 3740 | Dark Antique Violet |
| α | 229 | 930 | Dark Antique Blue |
| δ | 272 | 3021 | Very Dark Brown Gray |
| φ | 278 | 793 | Medium Cornflower Blue |
| { | 326 | 310, 3802 | 2 Blended Threads |
| λ | 343 | 3857 | Dark Rosewood |
| σ | 419 | 3790 | Ultra Dark Beige Gray |
| ω | 658 | 825 | Dark Blue |
| ξ | 791 | 895, 939 | 2 Blended Threads |
| ψ | 907 | 535 | Very Light Ash Gray |
| ζ | 1,006 | 820, 535 | 2 Blended Threads |
| ↔ | 3,263 | 310 | Black |
| € | 5,763 | 500, 310 | 2 Blended Threads |

[illegible]

108

70

60

140

108

Page 7 of 10

