

1285 Amalie Von Schintling



This pattern may not be copied, sold or in any other way handled in any way that violates the international copyright laws. If you get hold of this pattern (and or this document) in any other way than via a direct download from www.goldenkite.com or via a mail from us, you should report that to us at legal_actions@goldenkite.com .

Copyright (c) 2009-, Golden Kite. All rights reserved.

Instructions

Thank you for choosing Golden Kite products!
We hope you will have lots of fun with this cross-stitch pattern!

Fabric

Press the fabric with an iron if needed. A good thing to prevent the fabric from fraying is to machine zigzag the edges.

On large patterns, it is easiest to start from the upper left corner of the design. Make sure you have the proper margins before starting and that the fabric piece is of the correct size. The best way to verify this is to count all stitch positions on the fabric from the upper left corner downwards and to the right to make sure there is enough space for the design.

Some prefer to start in the center of the design instead. To locate the center of the fabric, fold the fabric in half both vertically and horizontally. The center is located where these two folds meet.

Stitches

Each length of DMC tread consists of six strands.
Use two of these strands for all stitches.

Note that some colors may be mixes (or blends) between two different pure colors. In that case take one strand of the two colors each and thread the two strands into the needle at the same time for stitching.

All stitches are full cross-stitches. No half-stitching and no back-stitching is necessary in this pattern.

All cross-stitches will be worked into the holes in the fabric from left to right. Always use the larger holes in the fabric for the stitches. Adjacent stitches should meet in the same hole. Make sure all stitches cross in the same direction.

Please be careful when washing the finished embroidery! The cotton thread may bleed when washed. Only hand wash it in lukewarm water. Remove excess water by roll it in a towel and lay it flat to air dry. Natural fabrics may shrink slightly when washed. We do not recommend washing the embroidery if not absolutely necessary and we take no responsibility for any damage that may occur.

When you start using this product you agree that Golden Kite (Golden K), or any people working for or in association with Golden Kite (Golden K), cannot be set responsible for any physical, mental, economical or other type of damage caused by this product (including this document, pattern, threads, needles and any other parts received by you from Golden Kite (Golden K)).

This pattern may not be copied, sold or in any other way handled in any way that violates the international copyright laws. If you get hold of this pattern (and or this document) in any other way than via a direct download from www.goldenkite.com or via a mail from us, you should report that to us at legal_actions@goldenkite.com.

Amalie Von Schintling

Stitch Count	
Horizontal:	300
Vertical:	365

Recommended Fabric Color
Antique White

This table tells the size of the pattern (without any margins) and the size of the fabric required to stitch the pattern (including recommended margins). 3 inch margins have been added on each side in the 'Including Margins' row.

The sizes are given for 14, 16 and 18 stitches per inch fabrics.

Make sure to use the 'Including Margins' row when cutting the piece of fabric to be used. Also make sure that 3 inch margins are enough for your stitching technique and add more margin areas if necessary.

	14				16				18			
	Width		Height		Width		Height		Width		Height	
	cm	inch	cm	inch	cm	inch	cm	inch	cm	inch	cm	inch
Pattern:	55	21.37	67	26.03	48	18.7	58	22.78	43	16.625	52	20.25
Including Margins:	71	28	83	33	64	25	74	29	59	23	68	27
	10				12				24			
	Width		Height		Width		Height		Width		Height	
	cm	inch	cm	inch	cm	inch	cm	inch	cm	inch	cm	inch
Pattern:	77	29.91	93	36.44	64	24.93	78	30.36	32	12.46	39	15.18
Including Margins:	93	36	109	43	80	31	94	37	48	19	55	22
	25				26				27			
	Width		Height		Width		Height		Width		Height	
	cm	inch	cm	inch	cm	inch	cm	inch	cm	inch	cm	inch
Pattern:	30	11.96	37	14.57	29	11.5	36	14.01	28	11.08	34	13.49
Including Margins:	46	18	53	21	45	18	52	21	44	18	50	20
	28				30				32			
	Width		Height		Width		Height		Width		Height	
	cm	inch	cm	inch	cm	inch	cm	inch	cm	inch	cm	inch
Pattern:	27	10.68	33	13.01	25	9.97	31	12.14	24	9.34	29	11.38
Including Margins:	43	17	49	20	41	16	47	19	40	16	45	18

Solid Color Stitches. Use two strands of the specified color for these stitches.		
Symbol	DMC	Name
⦶	223	Shell Pink-LT
■	310	Black
✱	315	Antique Mauve-VY DK
⦿	317	Pewter Gray
::	318	Steel Gray-LT
◉	413	Pewter Gray-DK
◈	414	Steel Gray-DK
5	415	Pearl Gray
▣	420	Hazelnut Brown-DK
✂	451	Shell Gray-DK
7	452	Shell Gray-MD
4	453	Shell Gray-LT
●	500	Blue Green-VY DK
►	520	Fern Green-DK
♦♦	535	Ash Gray-VY LT
◈	610	Drab Brown-DK
T	611	Drab Brown
⌘	612	Drab Brown-LT
✦	632	Desert Sand-UL VY DK
⦿	645	Beaver Gray-VY DK
≡	646	Beaver Gray-DK
⊕	647	Beaver Gray-MD
3	648	Beaver Gray-LT
e	738	Tan-VY LT
1	746	Off White
:	754	Peach-LT
▣	758	Terra Cotta-VY LT
•	762	Pearl Gray-VY LT
◈	778	Antique Mauve-VY LT
⦶	793	Cornflower Blue-MD
⦿	801	Coffee Brown-DK
n	819	Baby Pink-LT
▷	822	Beige Gray-LT
◀	838	Beige Brown-VY DK
◉	839	Beige Brown-DK
⦿	840	Beige Brown-MD
▣	844	Beaver Brown-UL DK
↑	898	Coffee Brown-VY DK
⦿	926	Gray Green-MD

⦶	928	Gray Green-VY LT
▣	930	Antique Blue-DK
•	932	Antique Blue-LT
✱	934	Black Avocado Green
⦿	935	Avocado Green-DK
◉	938	Coffee Brown-UL DK
+	950	Desert Sand-LT
•	975	Golden Brown-DK
✂	3011	Khaki Green-DK
⦿	3021	Brown Gray-VY DK
✕	3031	Mocha Brown-VY DK
✓	3032	Mocha Brown-MD
X	3041	Antique Violet-MD
H	3064	Desert Sand
♡	3072	Beaver Gray-VY LT
■	3371	Black Brown
<	3713	Salmon-VY LT
⦶	3721	Shell Pink-DK
•	3726	Antique Mauve-DK
◀	3743	Antique Violet-VY LT
◉	3753	Antique Blue-UL VY LT
~	3756	Baby Blue-UL VY LT
⦶	3772	Desert Sand-VY DK
♠	3781	Mocha Brown-DK
≡	3787	Brown Gray-DK
▷	3790	Beige Gray-UL DK
▣	3799	Pewter Gray-VY DK
▣	3802	Antique Mauve-VY DK
⊕	3807	Cornflower Blue
∇	3828	Hazelnut Brown
◀	3830	Terra Cotta-MD
↓	3857	Rosewood-DK
♠	3858	Rosewood-MD
♠	3859	Rosewood-LT
∅	3860	Cocoa
••	3861	Cocoa-LT
⊗	3862	Mocha Beige-DK
◀◀	3864	Mocha Beige-LT
u	3865	Winter White
I	3866	Mocha Brown-UL VY LT

Blend Stitches. Use one strand of each of DMC1 and DMC2 for these stitches.

Symbol	DMC1	Name1	DMC2	Name2
\$	414	Steel Gray-DK	3041	Antique Violet-MD
#	414	Steel Gray-DK	3861	Cocoa-LT
▼	839	Beige Brown-DK	3787	Brown Gray-DK
▲	610	Drab Brown-DK	839	Beige Brown-DK
▲	838	Beige Brown-VY DK	839	Beige Brown-DK
‡	223	Shell Pink-LT	3772	Desert Sand-VY DK
田	3041	Antique Violet-MD	3861	Cocoa-LT
✕	645	Beaver Gray-VY DK	839	Beige Brown-DK
♥	310	Black	3799	Pewter Gray-VY DK
❖	839	Beige Brown-DK	3790	Beige Gray-UL DK
▲	317	Pewter Gray	413	Pewter Gray-DK
☺	3860	Cocoa	3861	Cocoa-LT
☺	3032	Mocha Brown-MD	3772	Desert Sand-VY DK
☺	801	Coffee Brown-DK	838	Beige Brown-VY DK
☺	838	Beige Brown-VY DK	3021	Brown Gray-VY DK
☺	3721	Shell Pink-DK	3830	Terra Cotta-MD
Φ	801	Coffee Brown-DK	839	Beige Brown-DK
☺	3021	Brown Gray-VY DK	839	Beige Brown-DK
◆	838	Beige Brown-VY DK	938	Coffee Brown-UL DK
=	632	Desert Sand-UL VY DK	839	Beige Brown-DK
⊗	310	Black	3031	Mocha Brown-VY DK
◌	415	Pearl Gray	3861	Cocoa-LT
∨	414	Steel Gray-DK	647	Beaver Gray-MD
∨	317	Pewter Gray	414	Steel Gray-DK
☺	938	Coffee Brown-UL DK	3031	Mocha Brown-VY DK
✱	844	Beaver Brown-UL DK	935	Avocado Green-DK
☺	840	Beige Brown-MD	3860	Cocoa
☺	934	Black Avocado Green	3021	Brown Gray-VY DK
✕	3860	Cocoa	3787	Brown Gray-DK
☺	223	Shell Pink-LT	451	Shell Gray-DK
☺	839	Beige Brown-DK	3802	Antique Mauve-VY DK
☺	3064	Desert Sand	3862	Mocha Beige-DK
☺	315	Antique Mauve-VY DK	840	Beige Brown-MD
☆	842	Beige Brown-VY LT	3861	Cocoa-LT
m	224	Shell Pink-VY LT	3861	Cocoa-LT
III	223	Shell Pink-LT	3032	Mocha Brown-MD
=	3713	Salmon-VY LT	453	Shell Gray-LT
☺	452	Shell Gray-MD	950	Desert Sand-LT
)	453	Shell Gray-LT	712	Cream
δ	712	Cream	819	Baby Pink-LT
L	453	Shell Gray-LT	3866	Mocha Brown-UL VY LT
«	819	Baby Pink-LT	3865	Winter White
∞	819	Baby Pink-LT	225	Shell Pink-UL VY LT
◦	712	Cream	225	Shell Pink-UL VY LT
β	453	Shell Gray-LT	950	Desert Sand-LT
✕	223	Shell Pink-LT	3861	Cocoa-LT
☺	451	Shell Gray-DK	3032	Mocha Brown-MD
☺	3713	Salmon-VY LT	3866	Mocha Brown-UL VY LT
✓	950	Desert Sand-LT	3861	Cocoa-LT
↑	223	Shell Pink-LT	3864	Mocha Beige-LT
L	839	Beige Brown-DK	840	Beige Brown-MD
//	840	Beige Brown-MD	3802	Antique Mauve-VY DK
♠	840	Beige Brown-MD	3726	Antique Mauve-DK

☾	839	Beige Brown-DK	3834	Grape-DK
☼	3834	Grape-DK	3860	Cocoa
6	778	Antique Mauve-VY LT	3713	Salmon-VY LT
9	778	Antique Mauve-VY LT	950	Desert Sand-LT
4	3772	Desert Sand-VY DK	3802	Antique Mauve-VY DK
⦿	778	Antique Mauve-VY LT	3866	Mocha Brown-UL VY LT
●	310	Black	934	Black Avocado Green
✱	3021	Brown Gray-VY DK	3860	Cocoa
^	3722	Shell Pink-MD	3859	Rosewood-LT
6	3722	Shell Pink-MD	3772	Desert Sand-VY DK
(225	Shell Pink-UL VY LT	3866	Mocha Brown-UL VY LT
⊕	224	Shell Pink-VY LT	3772	Desert Sand-VY DK
⌘	840	Beige Brown-MD	451	Shell Gray-DK
^	819	Baby Pink-LT	762	Pearl Gray-VY LT
0	762	Pearl Gray-VY LT	648	Beaver Gray-LT
±	3743	Antique Violet-VY LT	3865	Winter White
☾	3721	Shell Pink-DK	3858	Rosewood-MD
⊕	3721	Shell Pink-DK	3722	Shell Pink-MD
☾	413	Pewter Gray-DK	924	Gray Green--VY DK
0	647	Beaver Gray-MD	3861	Cocoa-LT
2	415	Pearl Gray	3041	Antique Violet-MD
/	950	Desert Sand-LT	648	Beaver Gray-LT
-	3861	Cocoa-LT	648	Beaver Gray-LT
★	317	Pewter Gray	792	Cornflower Blue-DK
✱	414	Steel Gray-DK	792	Cornflower Blue-DK
▲	317	Pewter Gray	930	Antique Blue-DK
▲	414	Steel Gray-DK	930	Antique Blue-DK
◎	3041	Antique Violet-MD	930	Antique Blue-DK
♣	924	Gray Green--VY DK	3799	Pewter Gray-VY DK
☼	420	Hazelnut Brown-DK	610	Drab Brown-DK
✱	3858	Rosewood-MD	918	Red Copper-DK
⌘	3721	Shell Pink-DK	355	Terra Cotta-DK
⬆	3830	Terra Cotta-MD	355	Terra Cotta-DK
+	3857	Rosewood-DK	3858	Rosewood-MD
☼	838	Beige Brown-VY DK	898	Coffee Brown-VY DK
✱	838	Beige Brown-VY DK	902	Garnet-VY DK
†	221	Shell Pink-VY DK	3857	Rosewood-DK
◀	355	Terra Cotta-DK	918	Red Copper-DK
➔	336	Navy Blue	924	Gray Green--VY DK
☼	801	Coffee Brown-DK	3857	Rosewood-DK
▼	839	Beige Brown-DK	902	Garnet-VY DK
⊕	355	Terra Cotta-DK	3857	Rosewood-DK
☾	413	Pewter Gray-DK	792	Cornflower Blue-DK
z	931	Antique Blue-MD	3807	Cornflower Blue
♣	930	Antique Blue-DK	336	Navy Blue
☼	451	Shell Gray-DK	3726	Antique Mauve-DK

This table specifies how much thread of each color is required to stitch this pattern. It is good to know that one complete DMC skein contains 313 inches (795 cm) thread.

DMC	Name	Usage (cm)	Usage (inch)	Usage (cm)	Usage (inch)	Usage (cm)	Usage (inch)
		14		16		18	
221	Shell Pink-VY DK	28	11	27	10	24	9
223	Shell Pink-LT	89	35	85	33	76	29
224	Shell Pink-VY LT	37	14	36	14	32	12
225	Shell Pink-UL VY LT	176	69	168	66	151	59
310	Black	15820	6228	15067	5931	13560	5338
315	Antique Mauve-VY DK	41	16	39	15	35	13
317	Pewter Gray	206	81	196	77	176	69
318	Steel Gray-LT	8	3	7	2	7	2
336	Navy Blue	18	7	17	6	15	5
355	Terra Cotta-DK	612	240	583	229	524	206
413	Pewter Gray-DK	272	107	259	101	233	91
414	Steel Gray-DK	270	106	257	101	231	90
415	Pearl Gray	55	21	52	20	47	18
420	Hazelnut Brown-DK	13	5	12	4	11	4
451	Shell Gray-DK	109	42	104	40	94	37
452	Shell Gray-MD	119	46	113	44	102	40
453	Shell Gray-LT	146	57	139	54	125	49
500	Blue Green-VY DK	257	101	245	96	221	87
520	Fern Green-DK	8	3	8	3	7	2
535	Ash Gray-VY LT	82	32	78	30	70	27
610	Drab Brown-DK	46	18	43	16	39	15
611	Drab Brown	9	3	8	3	7	2
612	Drab Brown-LT	6	2	6	2	5	1
632	Desert Sand-UL VY DK	63	24	60	23	54	21
645	Beaver Gray-VY DK	135	53	128	50	115	45
646	Beaver Gray-DK	18	7	17	6	15	5
647	Beaver Gray-MD	107	42	102	40	92	36
648	Beaver Gray-LT	90	35	86	33	77	30
712	Cream	147	57	140	55	126	49
738	Tan-VY LT	4	1	4	1	3	1
746	Off White	14	5	14	5	12	4
754	Peach-LT	3	1	3	1	3	1
758	Terra Cotta-VY LT	3	1	3	1	3	1
762	Pearl Gray-VY LT	24	9	23	9	21	8
778	Antique Mauve-VY LT	80	31	76	29	68	26
792	Cornflower Blue-DK	93	36	89	35	80	31
793	Cornflower Blue-MD	11	4	10	3	9	3
801	Coffee Brown-DK	64	25	61	24	55	21
819	Baby Pink-LT	377	148	359	141	323	127
822	Beige Gray-LT	34	13	33	12	29	11
838	Beige Brown-VY DK	623	245	594	233	534	210
839	Beige Brown-DK	575	226	548	215	493	194
840	Beige Brown-MD	175	68	167	65	150	59
842	Beige Brown-VY LT	23	9	22	8	20	7
844	Beaver Brown-UL DK	297	116	283	111	254	100
898	Coffee Brown-VY DK	23	9	21	8	19	7
902	Garnet-VY DK	264	103	251	98	226	88
918	Red Copper-DK	302	118	288	113	259	101
924	Gray Green--VY DK	102	40	97	38	87	34
926	Gray Green-MD	9	3	9	3	8	3
928	Gray Green-VY LT	16	6	15	5	14	5
930	Antique Blue-DK	115	45	109	42	98	38
931	Antique Blue-MD	8	3	8	3	7	2

932	Antique Blue-LT	3	1	3	1	3	1
934	Black Avocado Green	1499	590	1428	562	1285	505
935	Avocado Green-DK	103	40	98	38	88	34
938	Coffee Brown-UL DK	405	159	386	151	347	136
950	Desert Sand-LT	215	84	205	80	184	72
975	Golden Brown-DK	8	3	7	2	7	2
3011	Khaki Green-DK	11	4	11	4	10	3
3021	Brown Gray-VY DK	658	259	627	246	564	222
3031	Mocha Brown-VY DK	630	248	600	236	540	212
3032	Mocha Brown-MD	73	28	70	27	63	24
3041	Antique Violet-MD	135	53	128	50	115	45
3064	Desert Sand	14	5	13	5	12	4
3072	Beaver Gray-VY LT	10	3	10	3	9	3
3371	Black Brown	300	118	286	112	257	101
3713	Salmon-VY LT	127	50	121	47	109	42
3721	Shell Pink-DK	511	201	487	191	438	172
3722	Shell Pink-MD	21	8	20	7	18	7
3726	Antique Mauve-DK	53	20	51	20	46	18
3743	Antique Violet-VY LT	17	6	16	6	15	5
3753	Antique Blue-UL VY LT	3	1	2	1	2	1
3756	Baby Blue-UL VY LT	5	1	5	1	5	1
3772	Desert Sand-VY DK	82	32	79	31	71	27
3781	Mocha Brown-DK	47	18	45	17	40	15
3787	Brown Gray-DK	104	40	99	38	89	35
3790	Beige Gray-UL DK	50	19	48	18	43	16
3799	Pewter Gray-VY DK	974	383	928	365	835	328
3802	Antique Mauve-VY DK	86	33	82	32	73	28
3807	Cornflower Blue	15	5	14	5	13	5
3828	Hazelnut Brown	6	2	6	2	5	1
3830	Terra Cotta-MD	196	77	187	73	168	66
3834	Grape-DK	50	19	48	18	43	16
3857	Rosewood-DK	426	167	406	159	365	143
3858	Rosewood-MD	477	187	454	178	409	161
3859	Rosewood-LT	9	3	9	3	8	3
3860	Cocoa	215	84	205	80	184	72
3861	Cocoa-LT	369	145	351	138	316	124
3862	Mocha Beige-DK	36	14	34	13	31	12
3864	Mocha Beige-LT	52	20	49	19	44	17
3865	Winter White	468	184	445	175	401	157
3866	Mocha Brown-UL VY LT	162	63	154	60	139	54

Extended thread usage table.							
DMC	Name	Usage (cm)	Usage (inch)	Usage (cm)	Usage (inch)	Usage (cm)	Usage (inch)
		10		12		24	
221	Shell Pink-VY DK	43	16	36	14	18	7
223	Shell Pink-LT	137	52	114	44	57	22
224	Shell Pink-VY LT	58	22	48	18	24	9
225	Shell Pink-UL VY LT	272	106	227	89	113	44
310	Black	24408	9608	20340	8007	10170	4004
315	Antique Mauve-VY DK	63	23	53	20	26	10
317	Pewter Gray	317	124	264	104	132	52
318	Steel Gray-LT	13	4	11	3	5	2
336	Navy Blue	27	9	23	8	11	4
355	Terra Cotta-DK	943	371	786	309	393	155
413	Pewter Gray-DK	419	164	350	137	175	68
414	Steel Gray-DK	416	162	347	135	173	68

415	Pearl Gray	85	32	71	27	35	14
420	Hazelnut Brown-DK	20	7	17	6	8	3
451	Shell Gray-DK	169	67	141	56	71	28
452	Shell Gray-MD	184	72	153	60	77	30
453	Shell Gray-LT	225	88	188	74	94	37
500	Blue Green-VY DK	398	157	332	131	166	65
520	Fern Green-DK	13	4	11	3	5	2
535	Ash Gray-VY LT	126	49	105	41	53	20
610	Drab Brown-DK	70	27	59	23	29	11
611	Drab Brown	13	4	11	3	5	2
612	Drab Brown-LT	9	2	8	2	4	1
632	Desert Sand-UL VY DK	97	38	81	32	41	16
645	Beaver Gray-VY DK	207	81	173	68	86	34
646	Beaver Gray-DK	27	9	23	8	11	4
647	Beaver Gray-MD	166	65	138	54	69	27
648	Beaver Gray-LT	139	54	116	45	58	23
712	Cream	227	88	189	74	95	37
738	Tan-VY LT	5	2	5	2	2	1
746	Off White	22	7	18	6	9	3
754	Peach-LT	5	2	5	2	2	1
758	Terra Cotta-VY LT	5	2	5	2	2	1
762	Pearl Gray-VY LT	38	14	32	12	16	6
778	Antique Mauve-VY LT	122	47	102	39	51	20
792	Cornflower Blue-DK	144	56	120	47	60	23
793	Cornflower Blue-MD	16	5	14	5	7	2
801	Coffee Brown-DK	99	38	83	32	41	16
819	Baby Pink-LT	581	229	485	191	242	95
822	Beige Gray-LT	52	20	44	17	22	8
838	Beige Brown-VY DK	961	378	801	315	401	158
839	Beige Brown-DK	887	349	740	291	370	146
840	Beige Brown-MD	270	106	225	89	113	44
842	Beige Brown-VY LT	36	13	30	11	15	5
844	Beaver Brown-UL DK	457	180	381	150	191	75
898	Coffee Brown-VY DK	34	13	29	11	14	5
902	Garnet-VY DK	407	158	339	132	170	66
918	Red Copper-DK	466	182	389	152	194	76
924	Gray Green--VY DK	157	61	131	51	65	26
926	Gray Green-MD	14	5	12	5	6	2
928	Gray Green-VY LT	25	9	21	8	11	4
930	Antique Blue-DK	176	68	147	57	74	29
931	Antique Blue-MD	13	4	11	3	5	2
932	Antique Blue-LT	5	2	5	2	2	1
934	Black Avocado Green	2313	909	1928	758	964	379
935	Avocado Green-DK	158	61	132	51	66	26
938	Coffee Brown-UL DK	625	245	521	204	260	102
950	Desert Sand-LT	331	130	276	108	138	54
975	Golden Brown-DK	13	4	11	3	5	2
3011	Khaki Green-DK	18	5	15	5	8	2
3021	Brown Gray-VY DK	1015	400	846	333	423	167
3031	Mocha Brown-VY DK	972	382	810	318	405	159
3032	Mocha Brown-MD	113	43	95	36	47	18
3041	Antique Violet-MD	207	81	173	68	86	34
3064	Desert Sand	22	7	18	6	9	3
3072	Beaver Gray-VY LT	16	5	14	5	7	2
3371	Black Brown	463	182	386	152	193	76
3713	Salmon-VY LT	196	76	164	63	82	32
3721	Shell Pink-DK	788	310	657	258	329	129
3722	Shell Pink-MD	32	13	27	11	14	5
3726	Antique Mauve-DK	83	32	69	27	35	14

Copyright (c) 2009-, Golden Kite (Golden K.)

Internet: www.goldenkite.com

e-mail: info@goldenkite.com

3743	Antique Violet-VY LT	27	9	23	8	11	4
3753	Antique Blue-UL VY LT	4	2	3	2	2	1
3756	Baby Blue-UL VY LT	9	2	8	2	4	1
3772	Desert Sand-VY DK	128	49	107	41	53	20
3781	Mocha Brown-DK	72	27	60	23	30	11
3787	Brown Gray-DK	160	63	134	53	67	26
3790	Beige Gray-UL DK	77	29	65	24	32	12
3799	Pewter Gray-VY DK	1503	590	1253	492	626	246
3802	Antique Mauve-VY DK	131	50	110	42	55	21
3807	Cornflower Blue	23	9	20	8	10	4
3828	Hazelnut Brown	9	2	8	2	4	1
3830	Terra Cotta-MD	302	119	252	99	126	50
3834	Grape-DK	77	29	65	24	32	12
3857	Rosewood-DK	657	257	548	215	274	107
3858	Rosewood-MD	736	290	614	242	307	121
3859	Rosewood-LT	14	5	12	5	6	2
3860	Cocoa	331	130	276	108	138	54
3861	Cocoa-LT	569	223	474	186	237	93
3862	Mocha Beige-DK	56	22	47	18	23	9
3864	Mocha Beige-LT	79	31	66	26	33	13
3865	Winter White	722	283	602	236	301	118
3866	Mocha Brown-UL VY LT	250	97	209	81	104	41

Extended thread usage table.							
DMC	Name	Usage (cm)	Usage (inch)	Usage (cm)	Usage (inch)	Usage (cm)	Usage (inch)
		25		26		27	
221	Shell Pink-VY DK	17	6	17	6	16	6
223	Shell Pink-LT	55	21	53	20	51	19
224	Shell Pink-VY LT	23	9	22	8	21	8
225	Shell Pink-UL VY LT	109	42	105	41	101	39
310	Black	9763	3843	9388	3696	9040	3559
315	Antique Mauve-VY DK	25	9	24	9	23	9
317	Pewter Gray	127	50	122	48	117	46
318	Steel Gray-LT	5	1	5	1	5	1
336	Navy Blue	11	4	10	3	10	3
355	Terra Cotta-DK	377	148	363	143	349	137
413	Pewter Gray-DK	168	66	161	63	155	61
414	Steel Gray-DK	166	65	160	62	154	60
415	Pearl Gray	34	13	33	12	31	12
420	Hazelnut Brown-DK	8	3	8	3	7	3
451	Shell Gray-DK	68	27	65	26	63	25
452	Shell Gray-MD	73	29	71	28	68	27
453	Shell Gray-LT	90	35	87	34	83	33
500	Blue Green-VY DK	159	63	153	60	147	58
520	Fern Green-DK	5	1	5	1	5	1
535	Ash Gray-VY LT	50	19	48	19	47	18
610	Drab Brown-DK	28	11	27	10	26	10
611	Drab Brown	5	1	5	1	5	1
612	Drab Brown-LT	4	1	3	1	3	1
632	Desert Sand-UL VY DK	39	15	37	15	36	14
645	Beaver Gray-VY DK	83	32	80	31	77	30
646	Beaver Gray-DK	11	4	10	3	10	3
647	Beaver Gray-MD	66	26	64	25	61	24
648	Beaver Gray-LT	55	22	53	21	51	20
712	Cream	91	35	87	34	84	33
738	Tan-VY LT	2	1	2	1	2	1

746	Off White	9	3	8	3	8	3
754	Peach-LT	2	1	2	1	2	1
758	Terra Cotta-VY LT	2	1	2	1	2	1
762	Pearl Gray-VY LT	15	6	15	6	14	5
778	Antique Mauve-VY LT	49	19	47	18	45	17
792	Cornflower Blue-DK	58	22	55	21	53	21
793	Cornflower Blue-MD	6	2	6	2	6	2
801	Coffee Brown-DK	40	15	38	15	37	14
819	Baby Pink-LT	233	91	224	88	215	85
822	Beige Gray-LT	21	8	20	8	19	7
838	Beige Brown-VY DK	384	151	370	145	356	140
839	Beige Brown-DK	355	140	341	134	329	129
840	Beige Brown-MD	108	42	104	41	100	39
842	Beige Brown-VY LT	14	5	14	5	13	5
844	Beaver Brown-UL DK	183	72	176	69	169	67
898	Coffee Brown-VY DK	14	5	13	5	13	5
902	Garnet-VY DK	163	63	156	61	151	59
918	Red Copper-DK	186	73	179	70	173	67
924	Gray Green--VY DK	63	24	60	24	58	23
926	Gray Green-MD	6	2	6	2	5	2
928	Gray Green-VY LT	10	4	10	3	9	3
930	Antique Blue-DK	71	27	68	26	65	25
931	Antique Blue-MD	5	1	5	1	5	1
932	Antique Blue-LT	2	1	2	1	2	1
934	Black Avocado Green	925	364	890	350	857	337
935	Avocado Green-DK	63	24	61	24	59	23
938	Coffee Brown-UL DK	250	98	240	94	231	91
950	Desert Sand-LT	132	52	127	50	123	48
975	Golden Brown-DK	5	1	5	1	5	1
3011	Khaki Green-DK	7	2	7	2	7	2
3021	Brown Gray-VY DK	406	160	390	154	376	148
3031	Mocha Brown-VY DK	389	153	374	147	360	141
3032	Mocha Brown-MD	45	17	44	17	42	16
3041	Antique Violet-MD	83	32	80	31	77	30
3064	Desert Sand	9	3	8	3	8	3
3072	Beaver Gray-VY LT	6	2	6	2	6	2
3371	Black Brown	185	73	178	70	171	67
3713	Salmon-VY LT	78	30	75	29	73	28
3721	Shell Pink-DK	315	124	303	119	292	115
3722	Shell Pink-MD	13	5	12	5	12	5
3726	Antique Mauve-DK	33	13	32	12	31	12
3743	Antique Violet-VY LT	11	4	10	3	10	3
3753	Antique Blue-UL VY LT	1	1	1	1	1	1
3756	Baby Blue-UL VY LT	4	1	3	1	3	1
3772	Desert Sand-VY DK	51	19	49	19	47	18
3781	Mocha Brown-DK	29	11	28	10	27	10
3787	Brown Gray-DK	64	25	62	24	59	23
3790	Beige Gray-UL DK	31	12	30	11	29	11
3799	Pewter Gray-VY DK	601	236	578	227	557	219
3802	Antique Mauve-VY DK	53	20	51	19	49	19
3807	Cornflower Blue	9	4	9	3	9	3
3828	Hazelnut Brown	4	1	3	1	3	1
3830	Terra Cotta-MD	121	48	116	46	112	44
3834	Grape-DK	31	12	30	11	29	11
3857	Rosewood-DK	263	103	253	99	243	95
3858	Rosewood-MD	294	116	283	111	273	107
3859	Rosewood-LT	6	2	6	2	5	2
3860	Cocoa	132	52	127	50	123	48
3861	Cocoa-LT	228	89	219	86	211	83

Copyright (c) 2009-, Golden Kite (Golden K.)

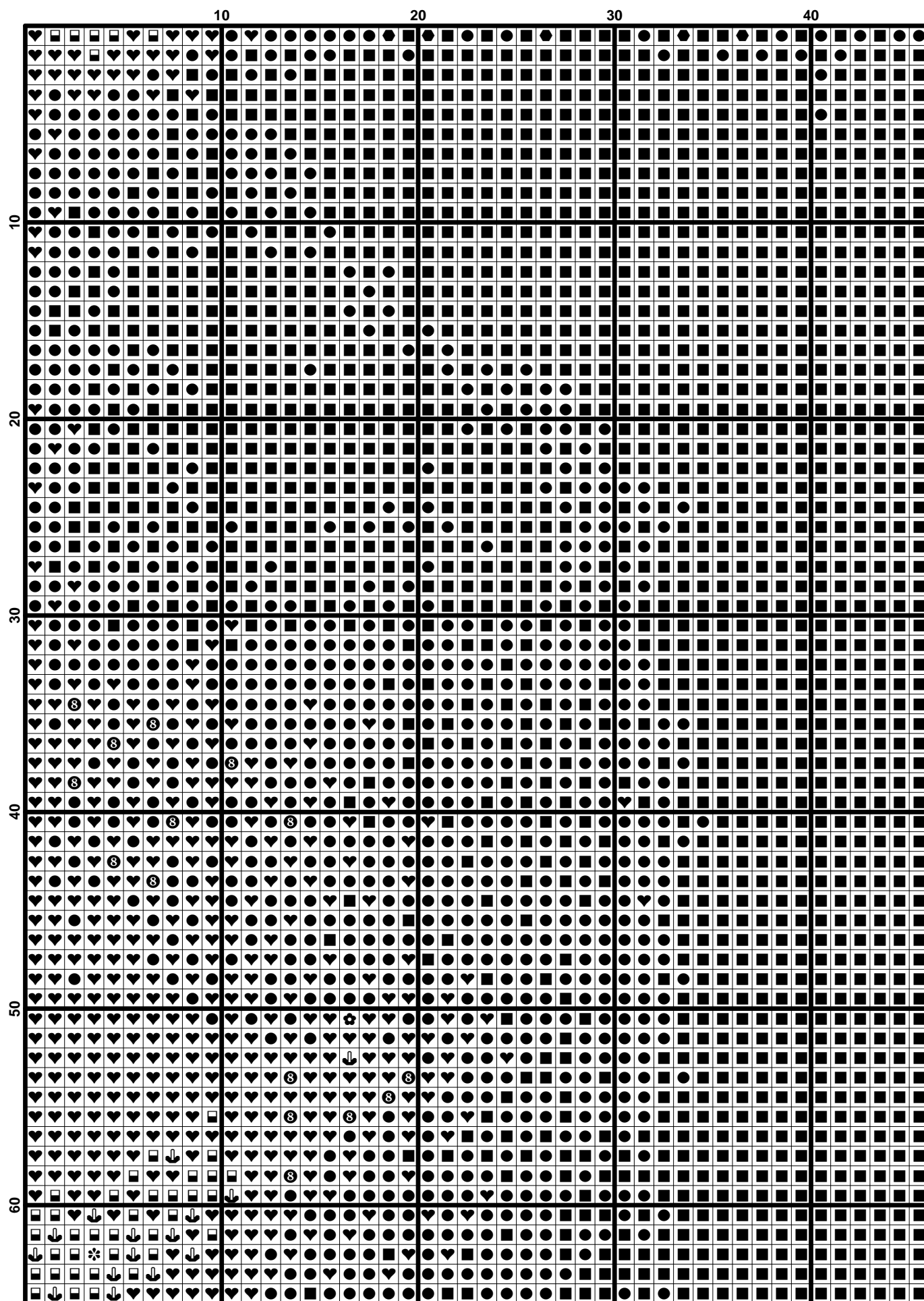
Internet: www.goldenkite.com

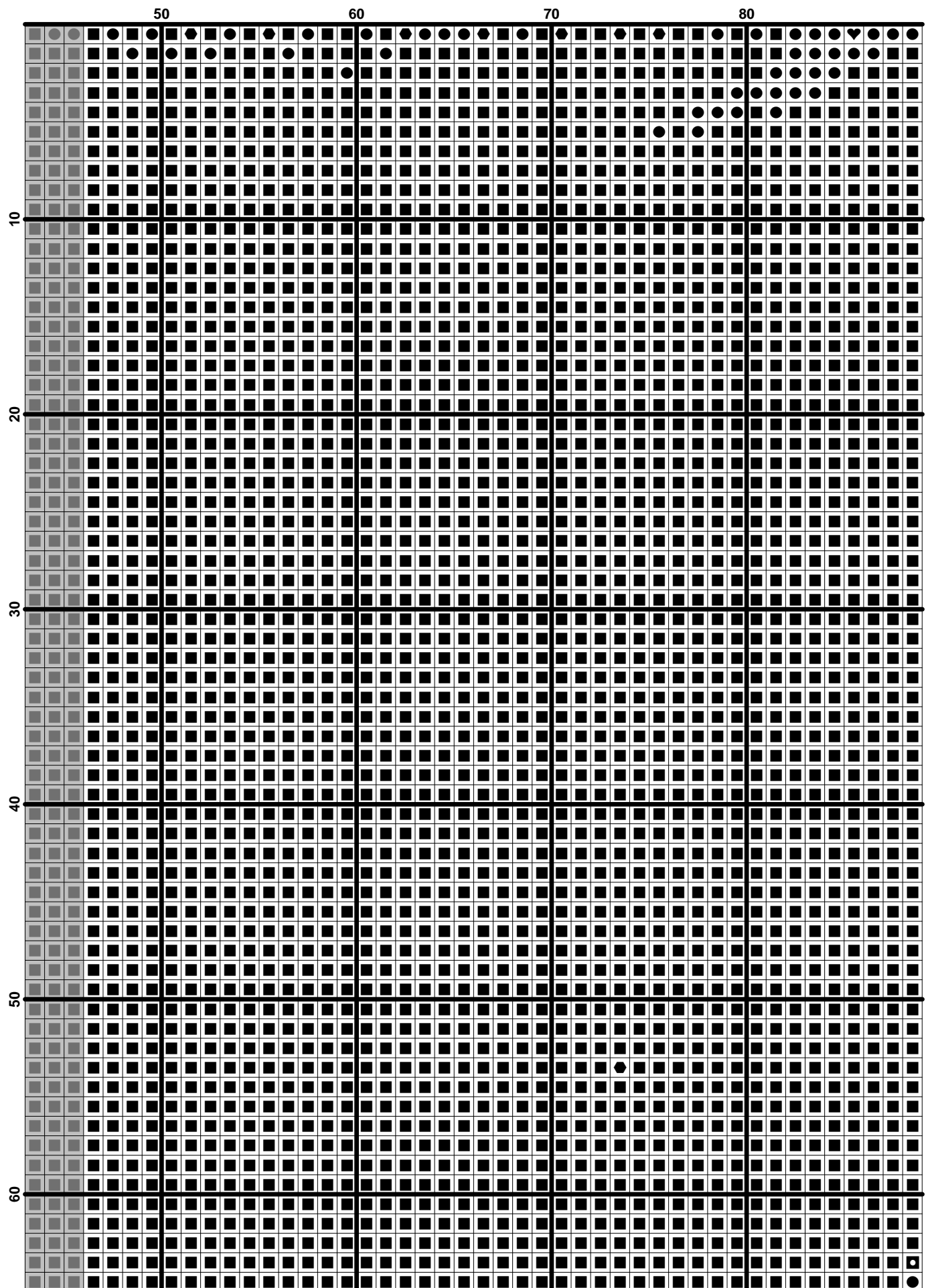
e-mail: info@goldenkite.com

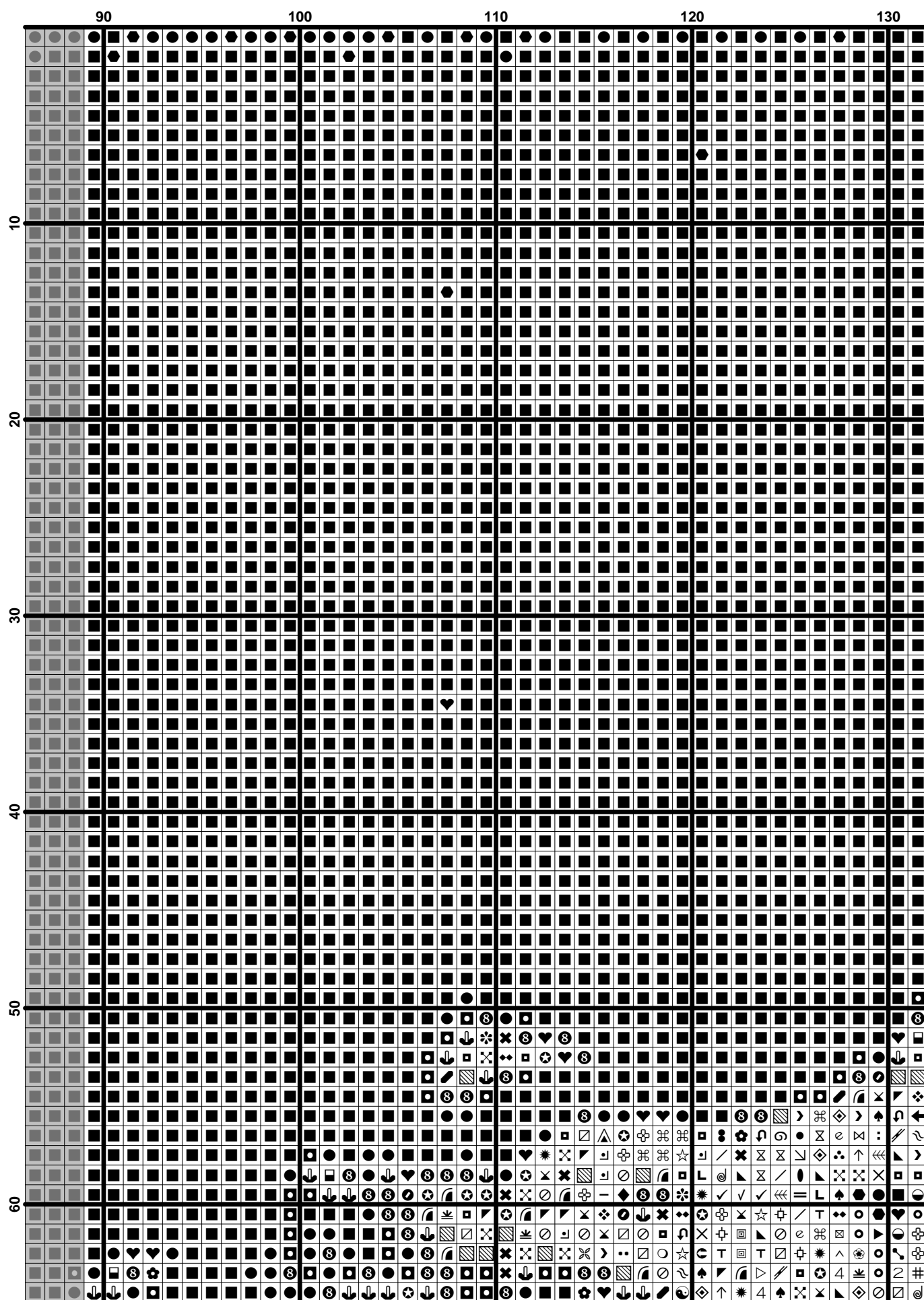
3862	Mocha Beige-DK	22	9	21	8	21	8
3864	Mocha Beige-LT	32	12	30	12	29	11
3865	Winter White	289	113	278	109	267	105
3866	Mocha Brown-UL VY LT	100	39	96	37	93	36

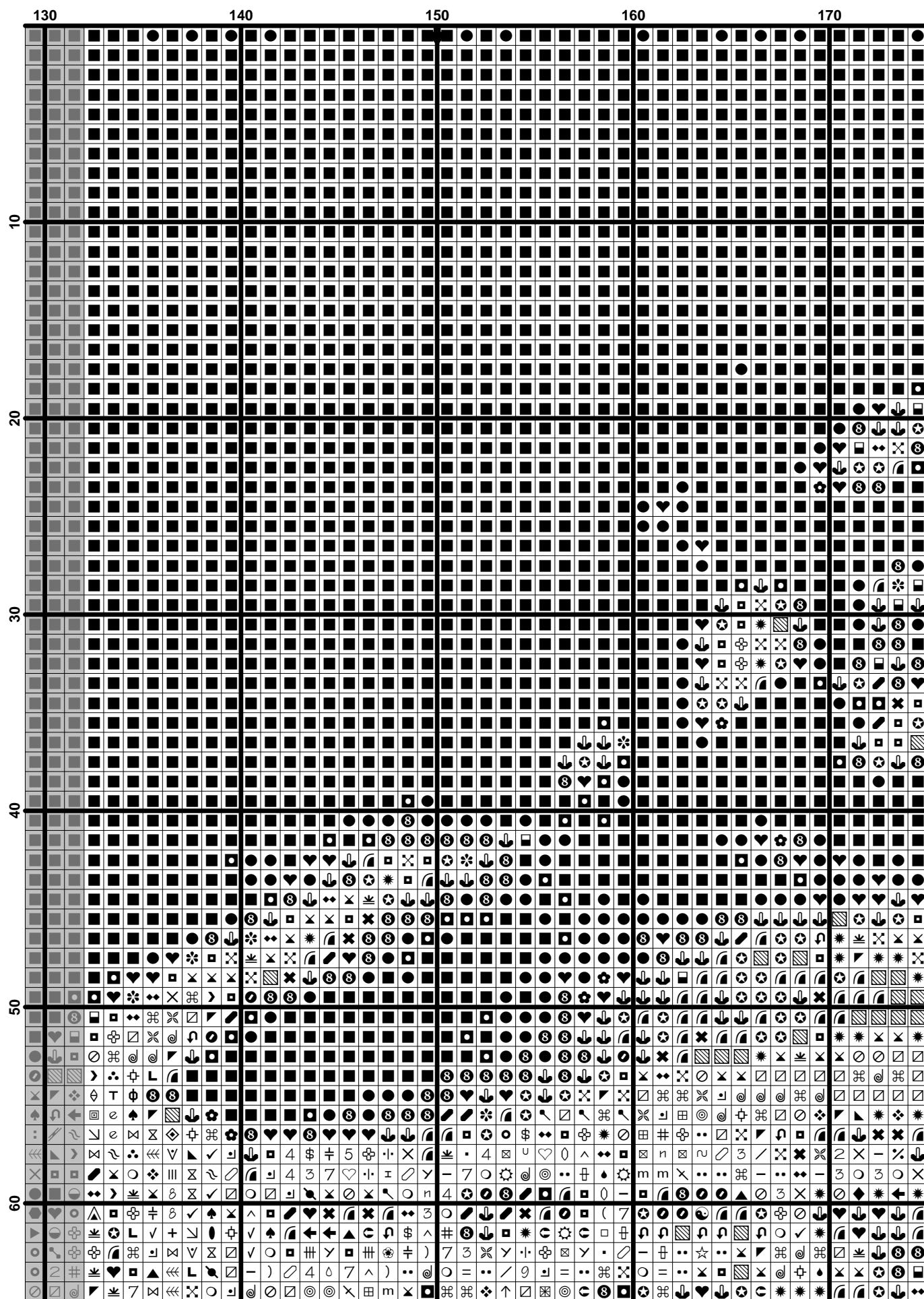
Extended thread usage table.							
DMC	Name	Usage (cm)	Usage (inch)	Usage (cm)	Usage (inch)	Usage (cm)	Usage (inch)
		28		30		32	
221	Shell Pink-VY DK	15	6	14	5	14	5
223	Shell Pink-LT	49	19	46	17	43	16
224	Shell Pink-VY LT	21	8	19	7	18	7
225	Shell Pink-UL VY LT	97	38	91	35	85	33
310	Black	8717	3432	8136	3203	7628	3003
315	Antique Mauve-VY DK	23	8	21	8	20	7
317	Pewter Gray	113	44	106	41	99	39
318	Steel Gray-LT	5	1	4	1	4	1
336	Navy Blue	10	3	9	3	8	3
355	Terra Cotta-DK	337	132	314	124	295	116
413	Pewter Gray-DK	150	59	140	55	131	51
414	Steel Gray-DK	149	58	139	54	130	51
415	Pearl Gray	30	12	28	11	26	10
420	Hazelnut Brown-DK	7	3	7	2	6	2
451	Shell Gray-DK	60	24	56	22	53	21
452	Shell Gray-MD	66	26	61	24	57	23
453	Shell Gray-LT	80	32	75	29	70	28
500	Blue Green-VY DK	142	56	133	52	124	49
520	Fern Green-DK	5	1	4	1	4	1
535	Ash Gray-VY LT	45	17	42	16	39	15
610	Drab Brown-DK	25	10	23	9	22	8
611	Drab Brown	5	1	4	1	4	1
612	Drab Brown-LT	3	1	3	1	3	1
632	Desert Sand-UL VY DK	35	14	32	13	30	12
645	Beaver Gray-VY DK	74	29	69	27	65	25
646	Beaver Gray-DK	10	3	9	3	8	3
647	Beaver Gray-MD	59	23	55	22	52	20
648	Beaver Gray-LT	50	19	46	18	43	17
712	Cream	81	32	76	29	71	28
738	Tan-VY LT	2	1	2	1	2	1
746	Off White	8	3	7	2	7	2
754	Peach-LT	2	1	2	1	2	1
758	Terra Cotta-VY LT	2	1	2	1	2	1
762	Pearl Gray-VY LT	14	5	13	5	12	5
778	Antique Mauve-VY LT	44	17	41	16	38	15
792	Cornflower Blue-DK	51	20	48	19	45	17
793	Cornflower Blue-MD	6	2	5	2	5	2
801	Coffee Brown-DK	35	14	33	13	31	12
819	Baby Pink-LT	208	82	194	76	182	71
822	Beige Gray-LT	19	7	17	7	16	6
838	Beige Brown-VY DK	343	135	320	126	300	118
839	Beige Brown-DK	317	125	296	116	277	109
840	Beige Brown-MD	96	38	90	35	84	33
842	Beige Brown-VY LT	13	5	12	4	11	4
844	Beaver Brown-UL DK	163	64	152	60	143	56
898	Coffee Brown-VY DK	12	5	11	4	11	4
902	Garnet-VY DK	145	57	136	53	127	50
918	Red Copper-DK	167	65	155	61	146	57

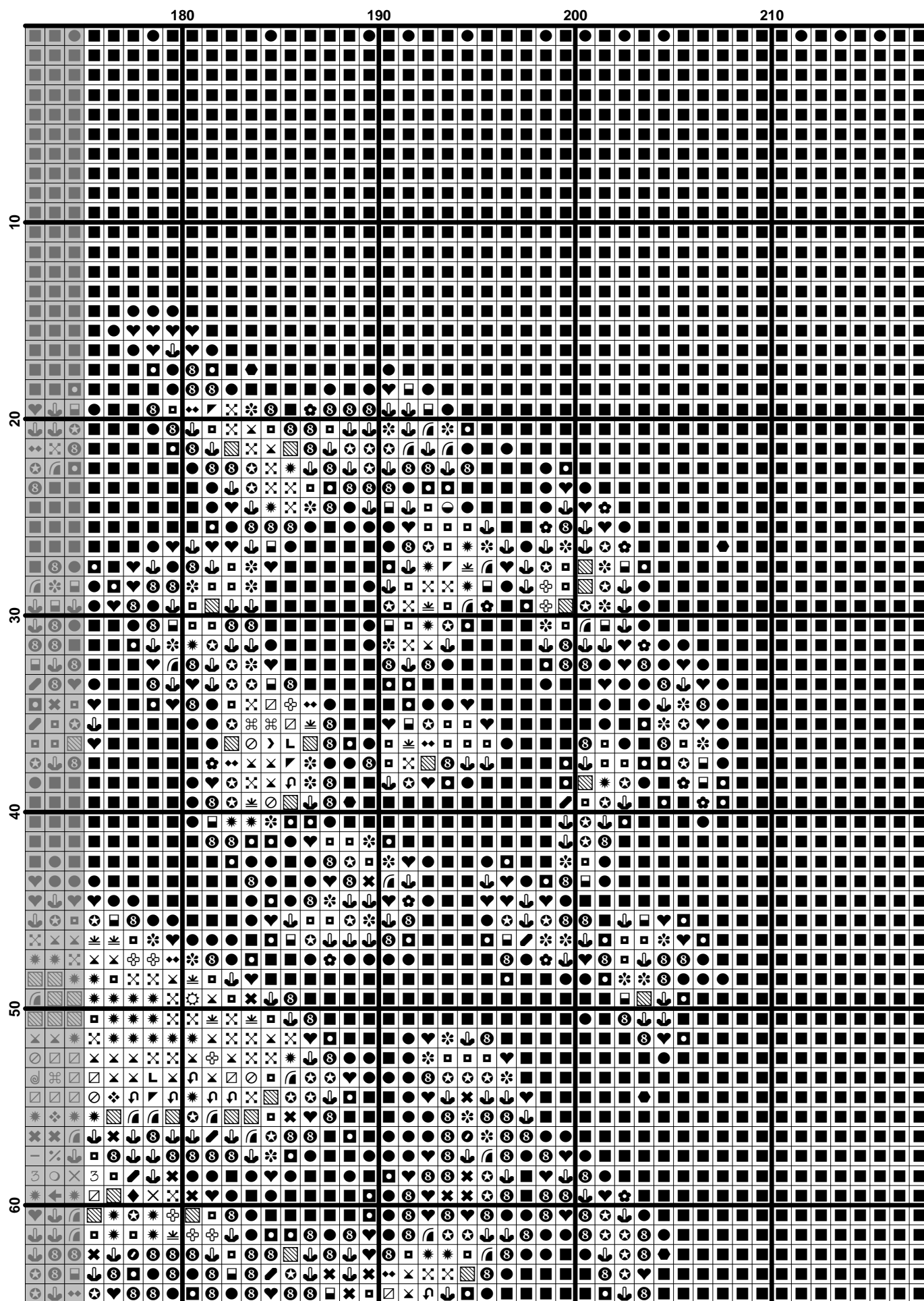
924	Gray Green--VY DK	56	22	52	20	49	19
926	Gray Green-MD	5	2	5	2	5	2
928	Gray Green-VY LT	9	3	8	3	8	3
930	Antique Blue-DK	63	24	59	23	55	21
931	Antique Blue-MD	5	1	4	1	4	1
932	Antique Blue-LT	2	1	2	1	2	1
934	Black Avocado Green	826	325	771	303	723	284
935	Avocado Green-DK	57	22	53	20	50	19
938	Coffee Brown-UL DK	223	87	208	82	195	77
950	Desert Sand-LT	118	46	110	43	104	41
975	Golden Brown-DK	5	1	4	1	4	1
3011	Khaki Green-DK	6	2	6	2	6	2
3021	Brown Gray-VY DK	363	143	338	133	317	125
3031	Mocha Brown-VY DK	347	136	324	127	304	119
3032	Mocha Brown-MD	41	15	38	14	35	14
3041	Antique Violet-MD	74	29	69	27	65	25
3064	Desert Sand	8	3	7	2	7	2
3072	Beaver Gray-VY LT	6	2	5	2	5	2
3371	Black Brown	165	65	154	61	145	57
3713	Salmon-VY LT	70	27	65	25	61	24
3721	Shell Pink-DK	282	111	263	103	246	97
3722	Shell Pink-MD	12	5	11	4	10	4
3726	Antique Mauve-DK	30	12	28	11	26	10
3743	Antique Violet-VY LT	10	3	9	3	8	3
3753	Antique Blue-UL VY LT	1	1	1	1	1	1
3756	Baby Blue-UL VY LT	3	1	3	1	3	1
3772	Desert Sand-VY DK	46	17	43	16	40	15
3781	Mocha Brown-DK	26	10	24	9	23	8
3787	Brown Gray-DK	57	23	53	21	50	20
3790	Beige Gray-UL DK	28	10	26	10	24	9
3799	Pewter Gray-VY DK	537	211	501	197	470	185
3802	Antique Mauve-VY DK	47	18	44	17	41	16
3807	Cornflower Blue	8	3	8	3	7	3
3828	Hazelnut Brown	3	1	3	1	3	1
3830	Terra Cotta-MD	108	42	101	40	95	37
3834	Grape-DK	28	10	26	10	24	9
3857	Rosewood-DK	235	92	219	86	205	80
3858	Rosewood-MD	263	104	245	97	230	91
3859	Rosewood-LT	5	2	5	2	5	2
3860	Cocoa	118	46	110	43	104	41
3861	Cocoa-LT	203	80	190	74	178	70
3862	Mocha Beige-DK	20	8	19	7	17	7
3864	Mocha Beige-LT	28	11	26	10	25	10
3865	Winter White	258	101	241	94	226	88
3866	Mocha Brown-UL VY LT	89	35	83	32	78	30

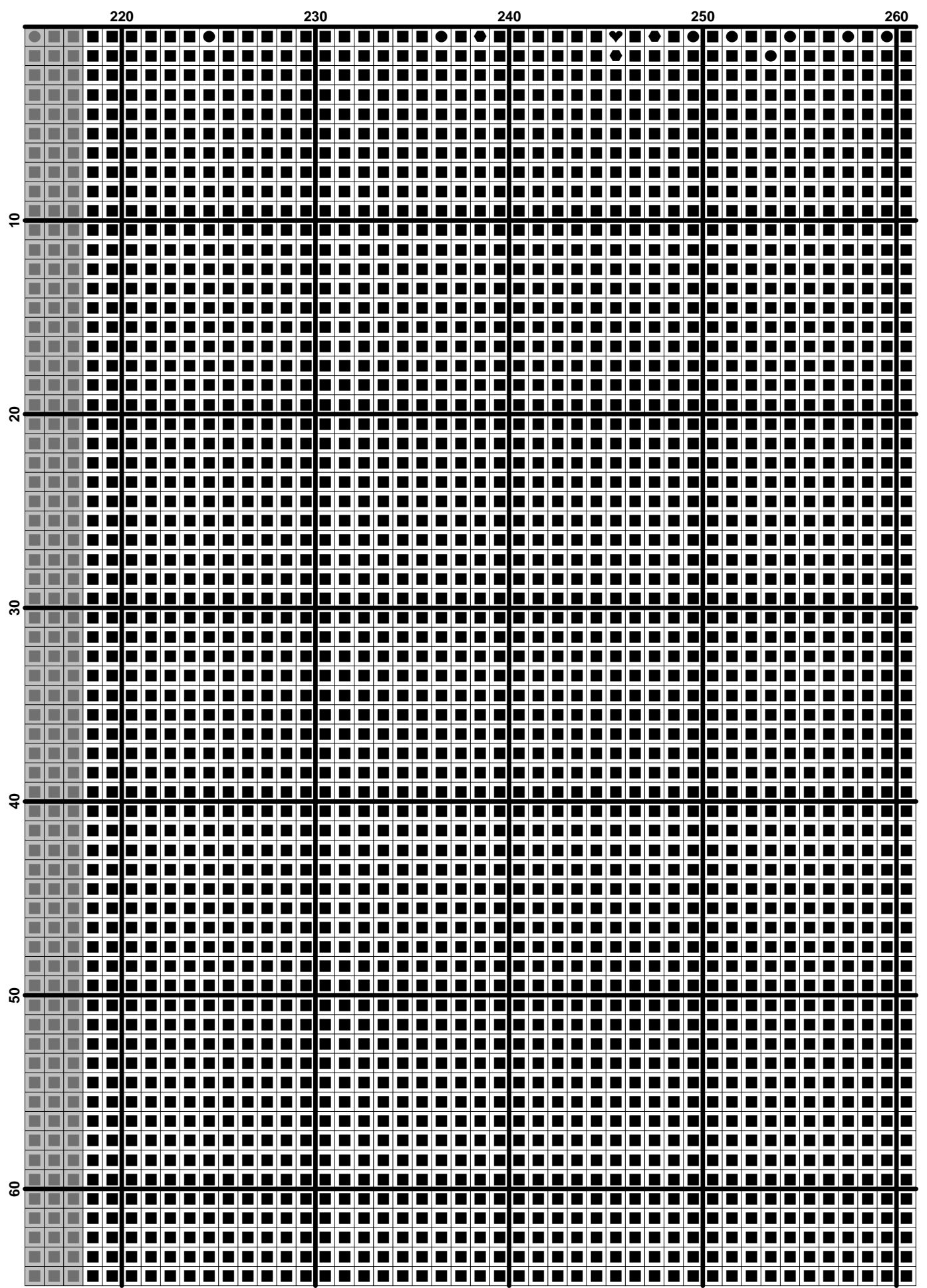


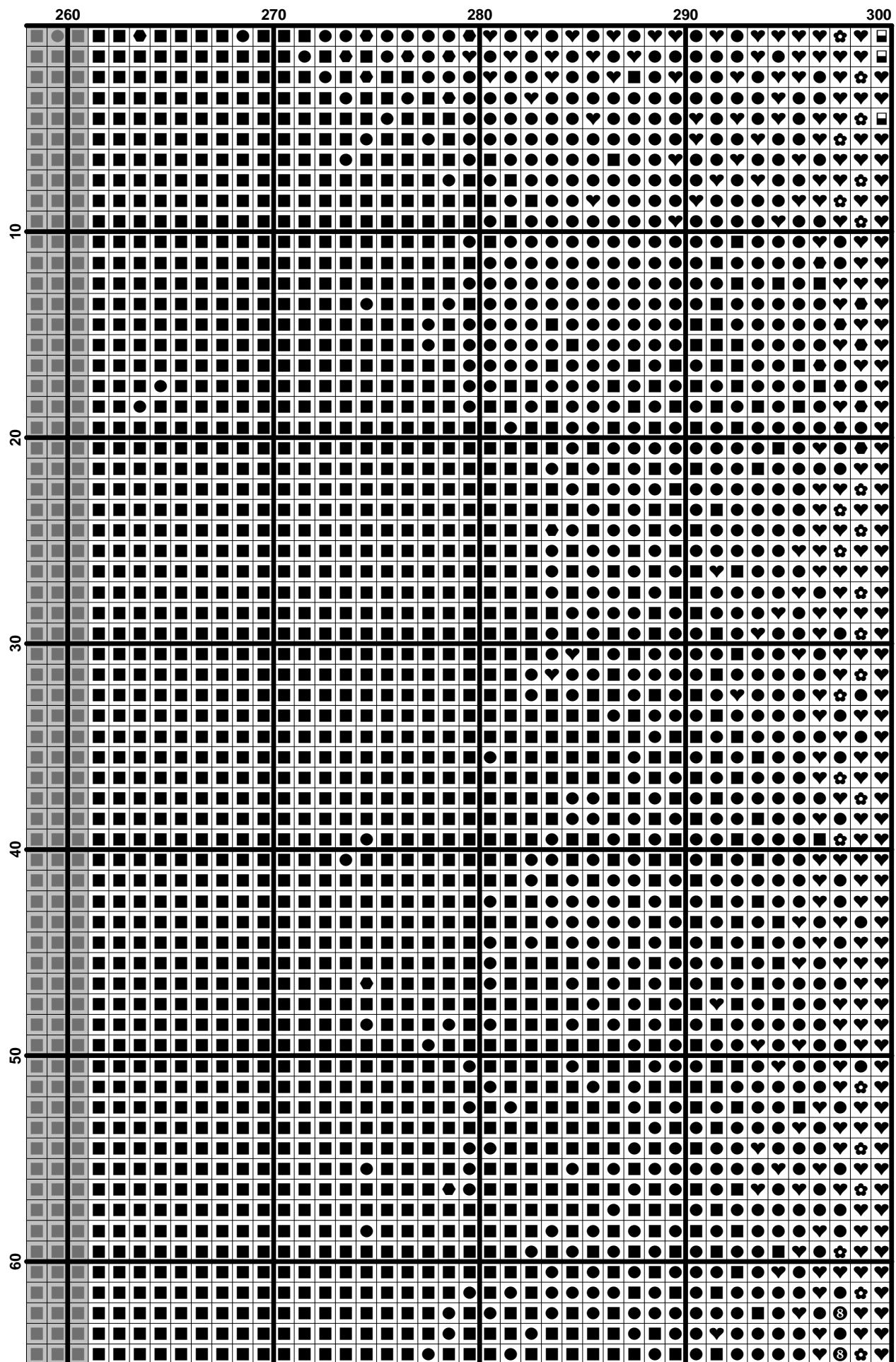


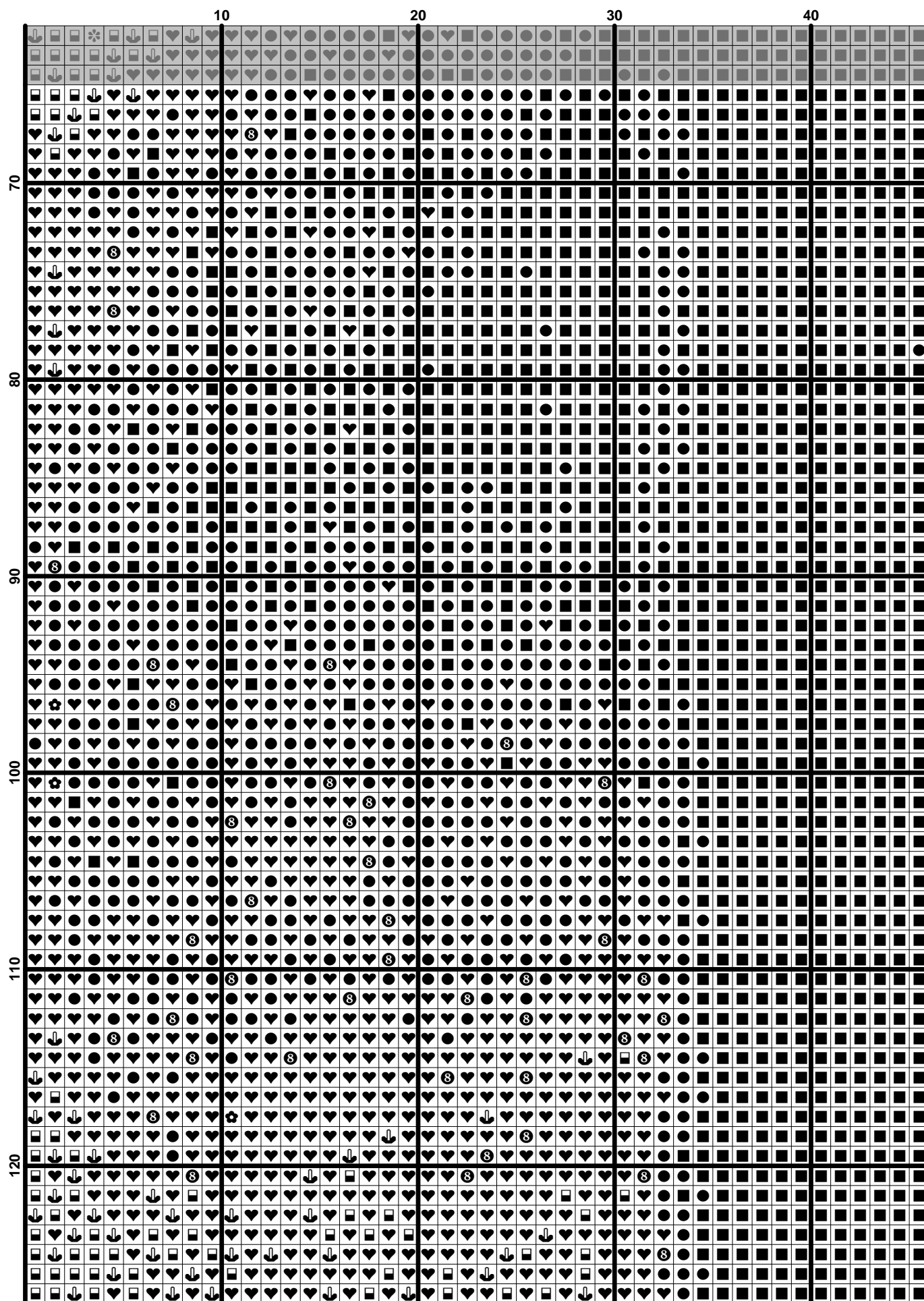








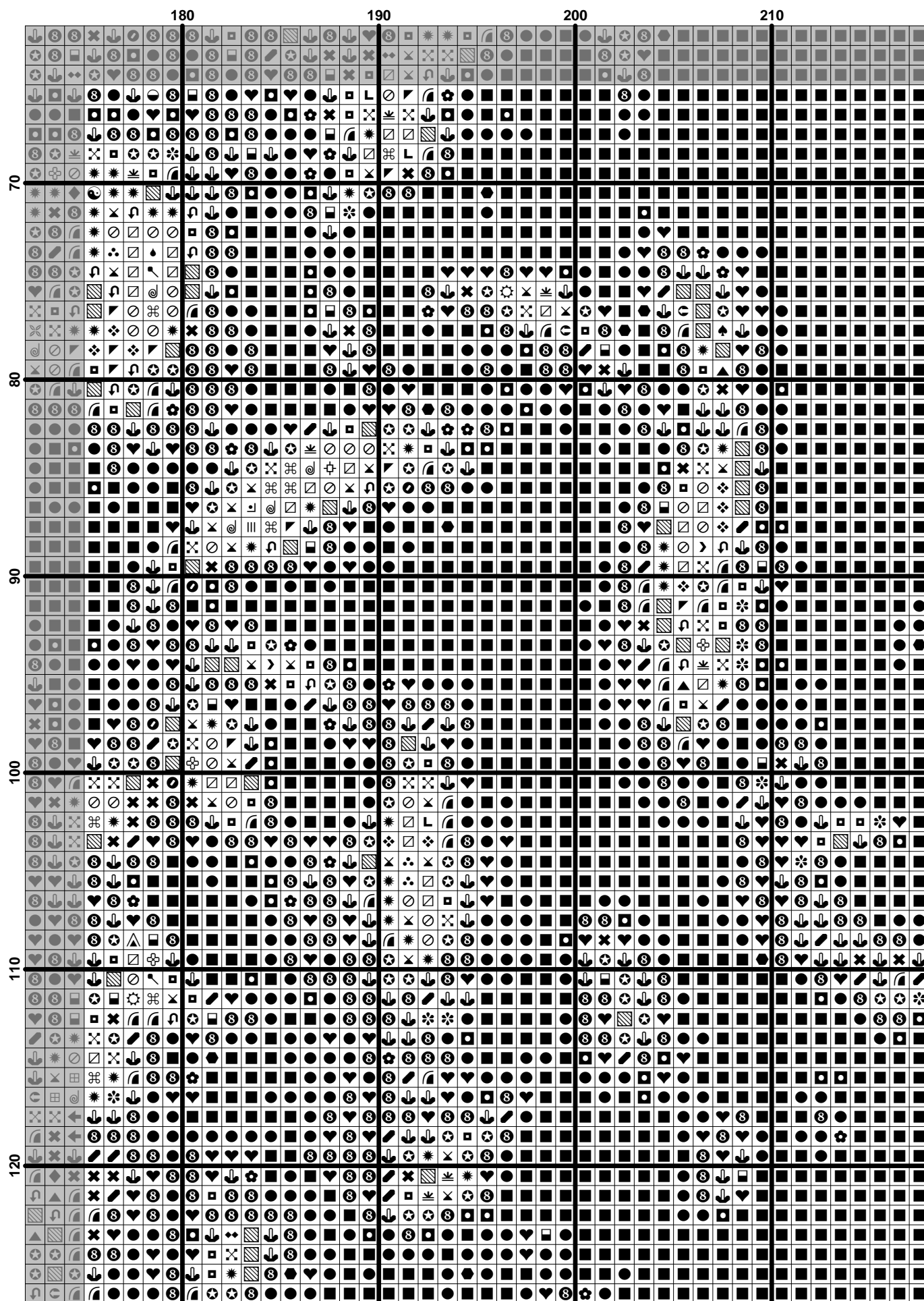


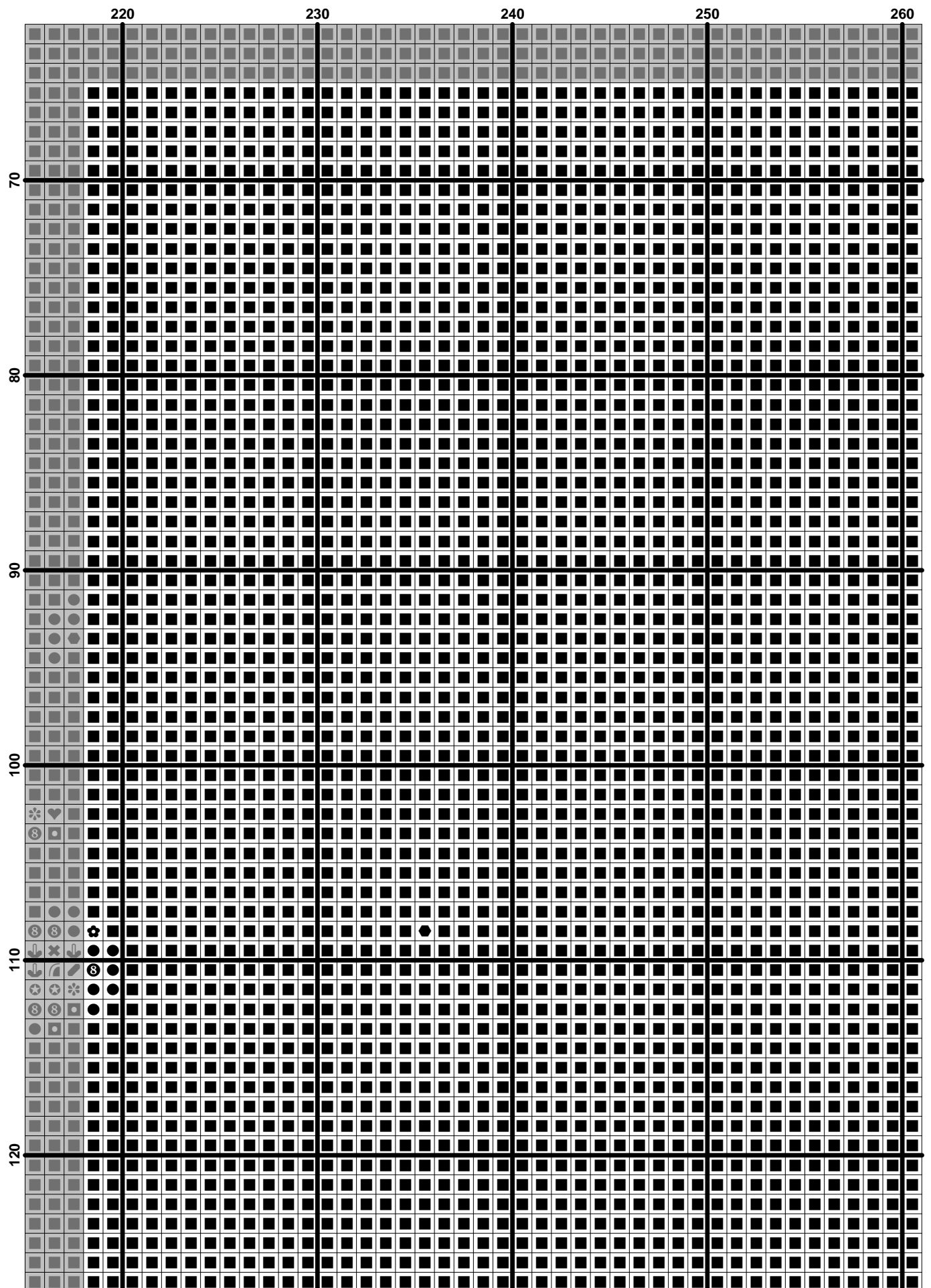


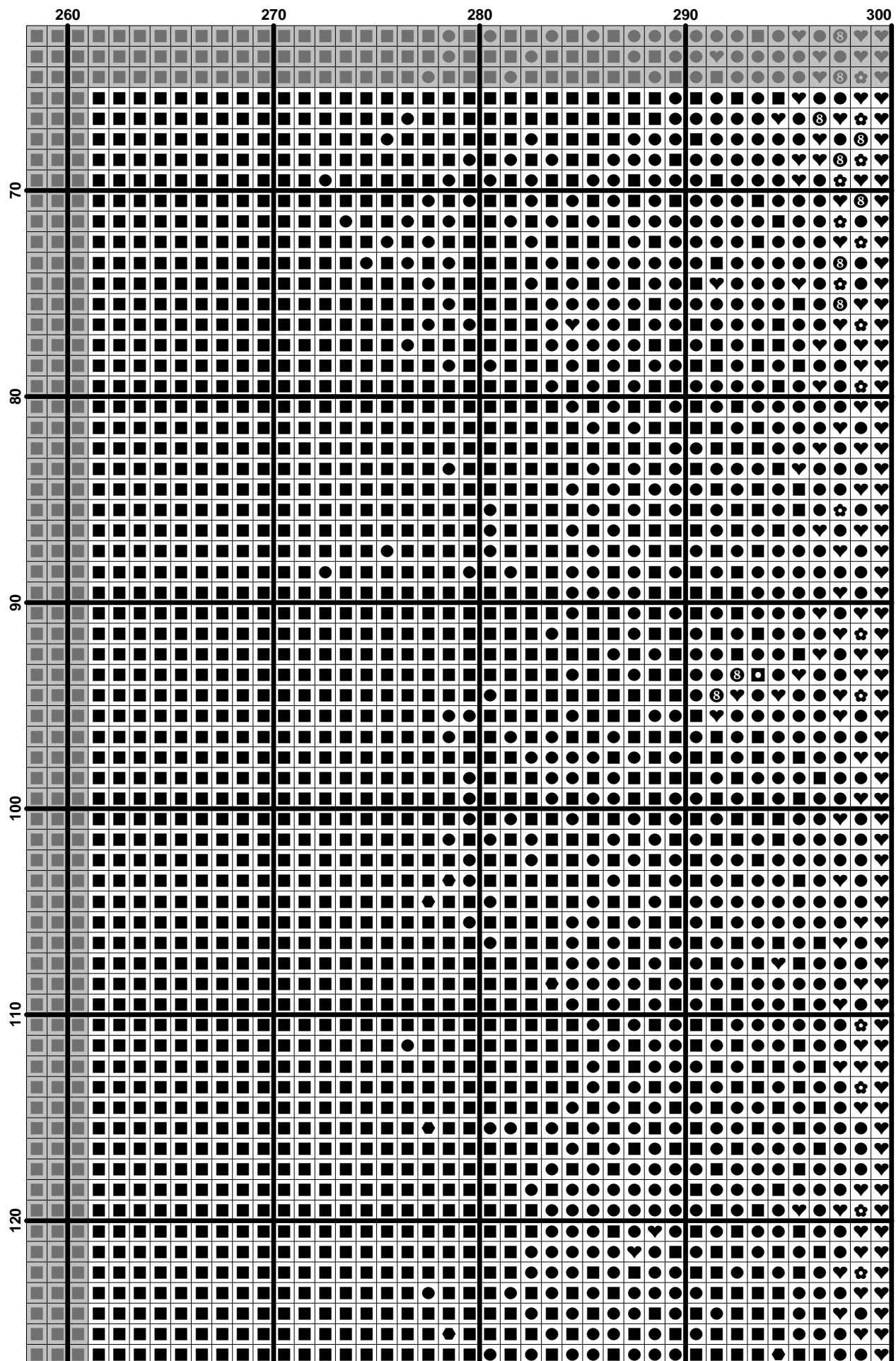


	90	100	110	120	130
70					
80					
90					
100					
110					
120					

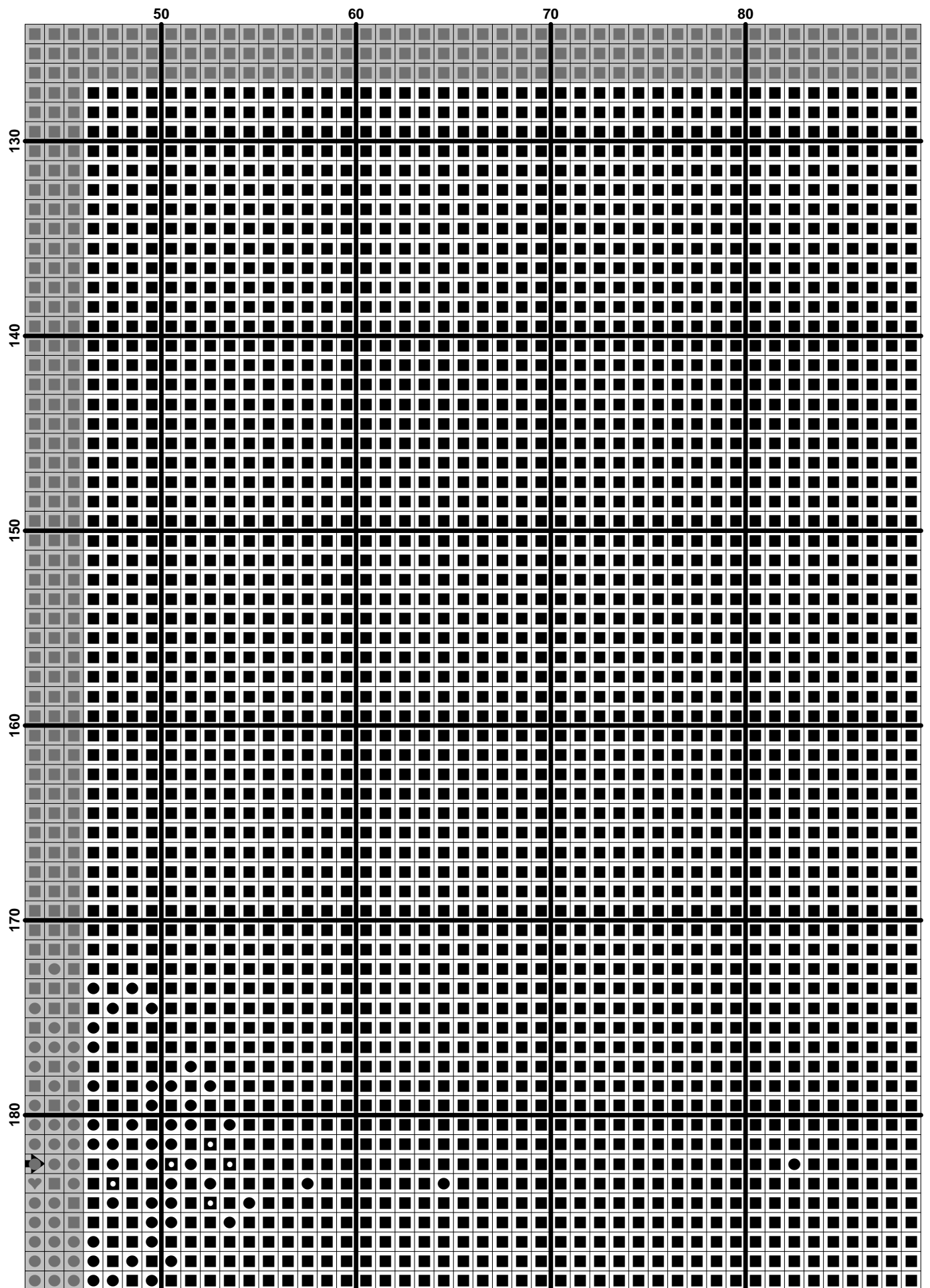
	130	140	150	160	170
70					
80					
90					
100					
110					
120					

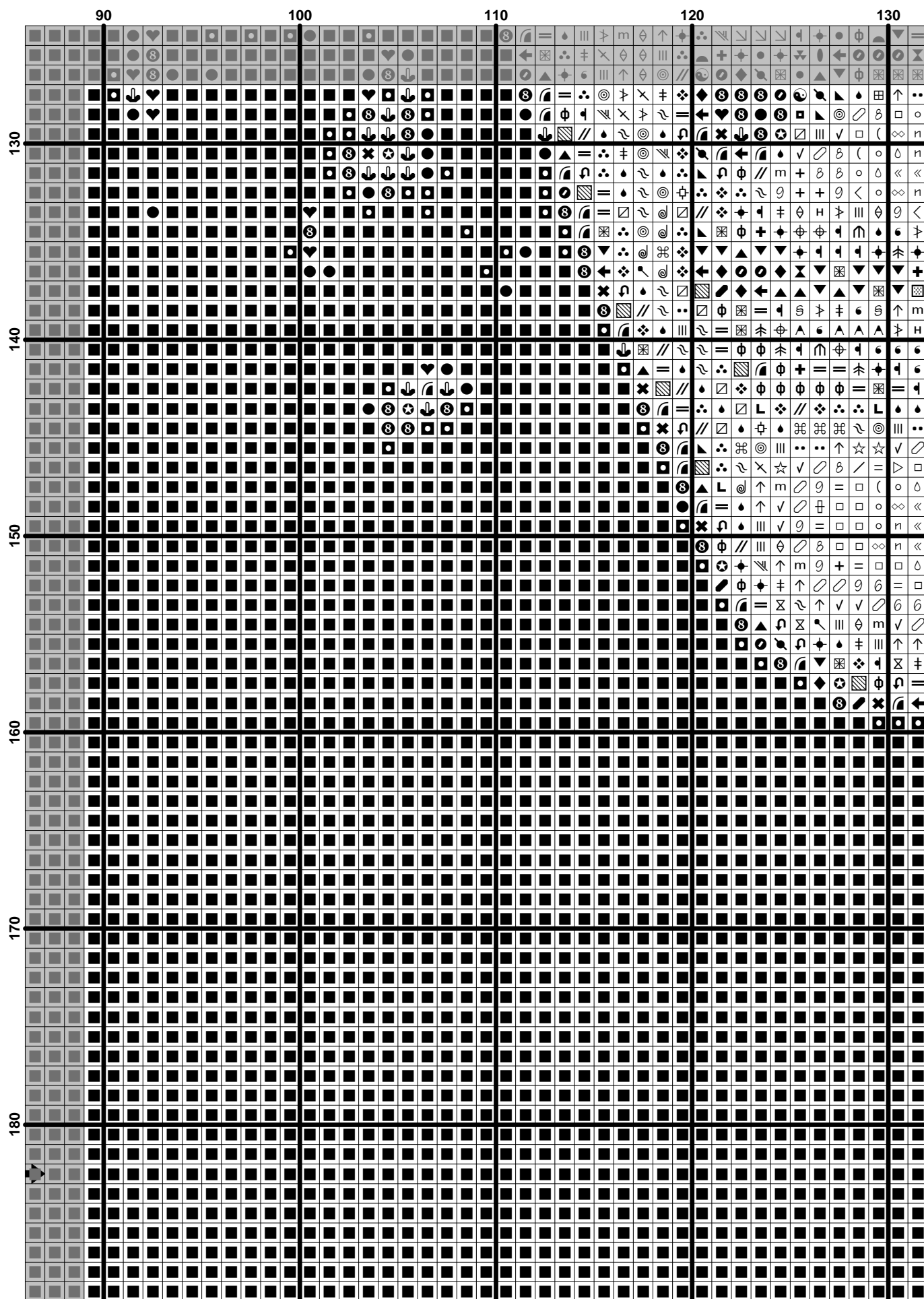






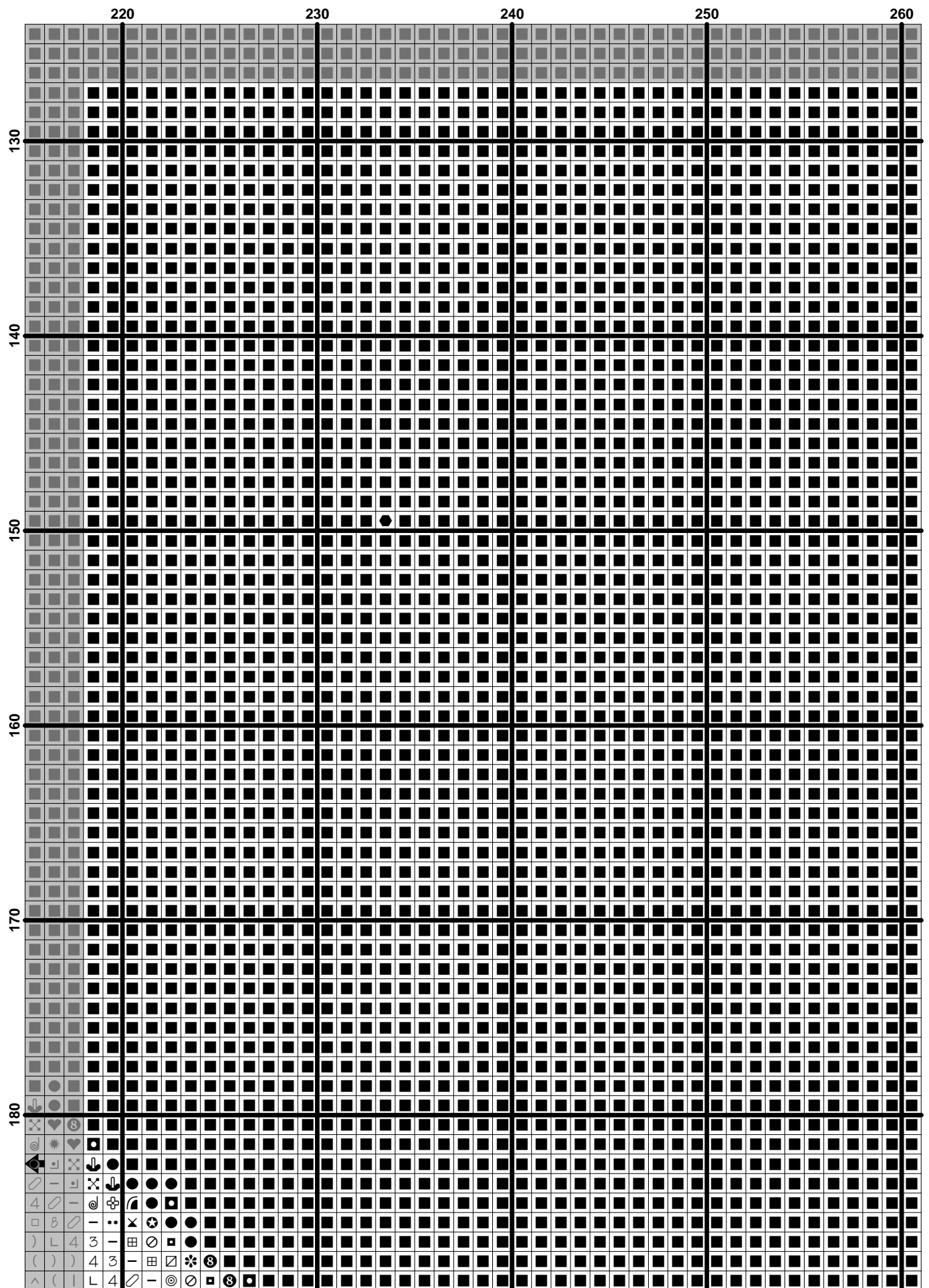


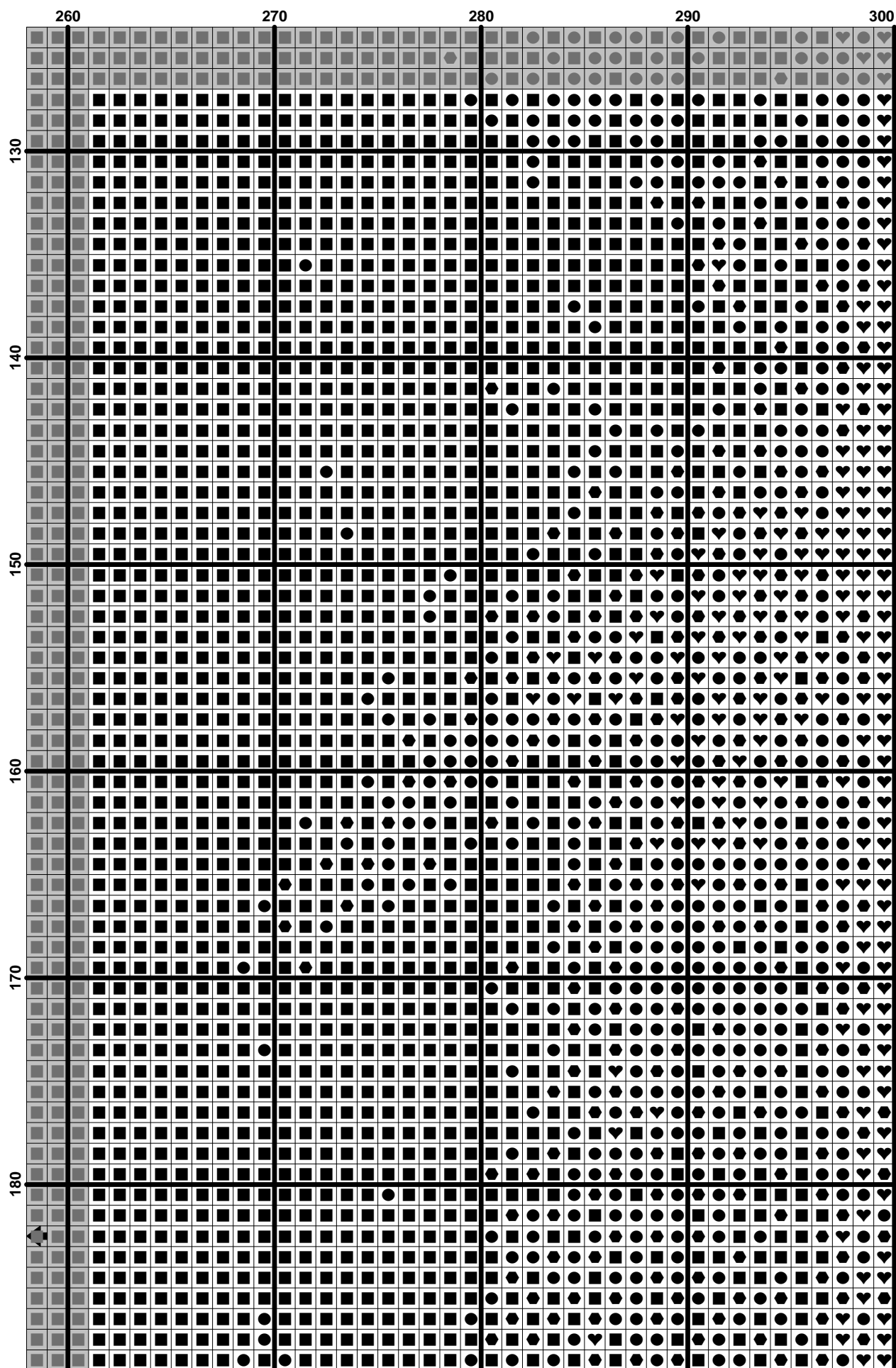




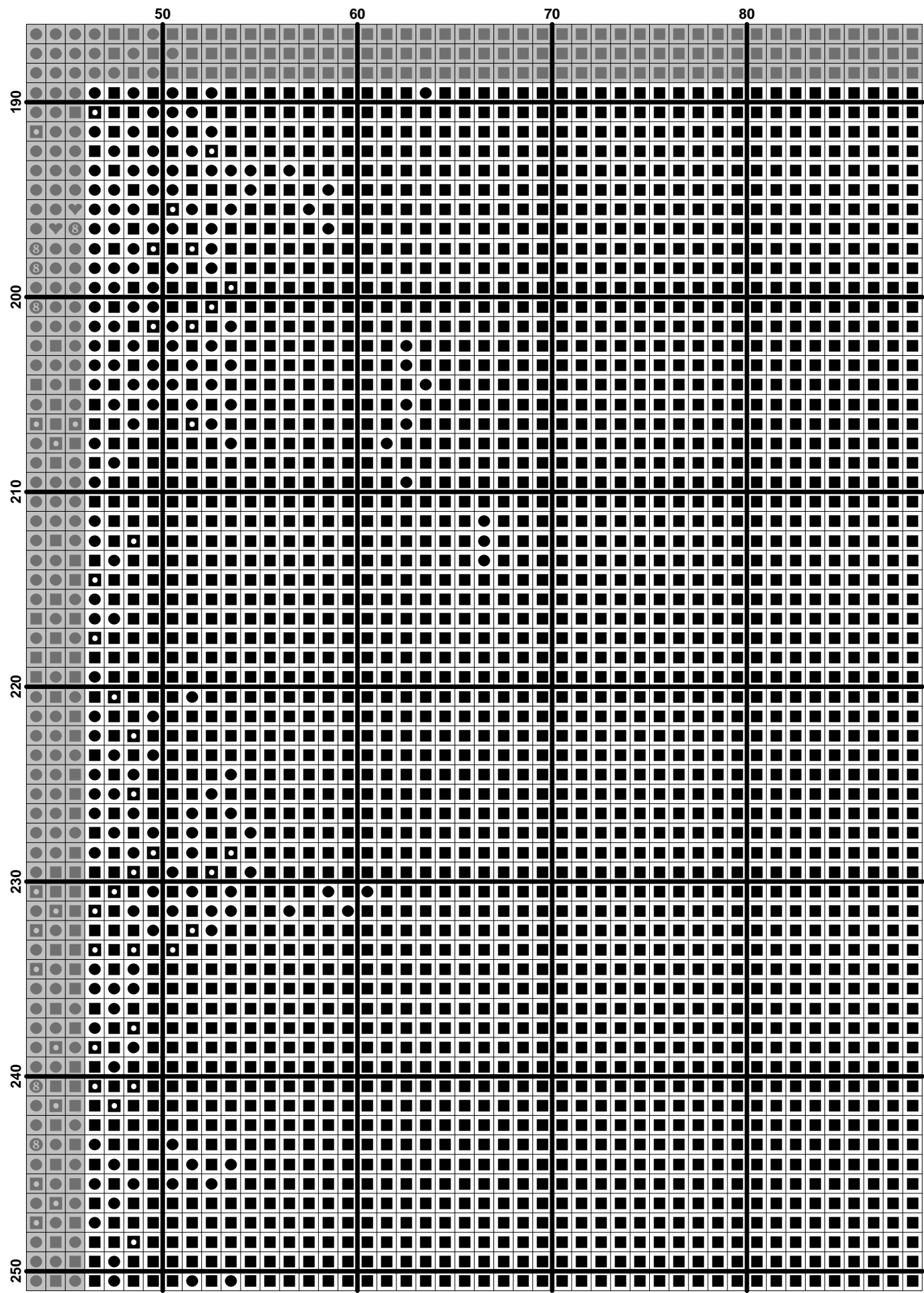
	130	140	150	160	170
130					
140					
150					
160					
170					
180					

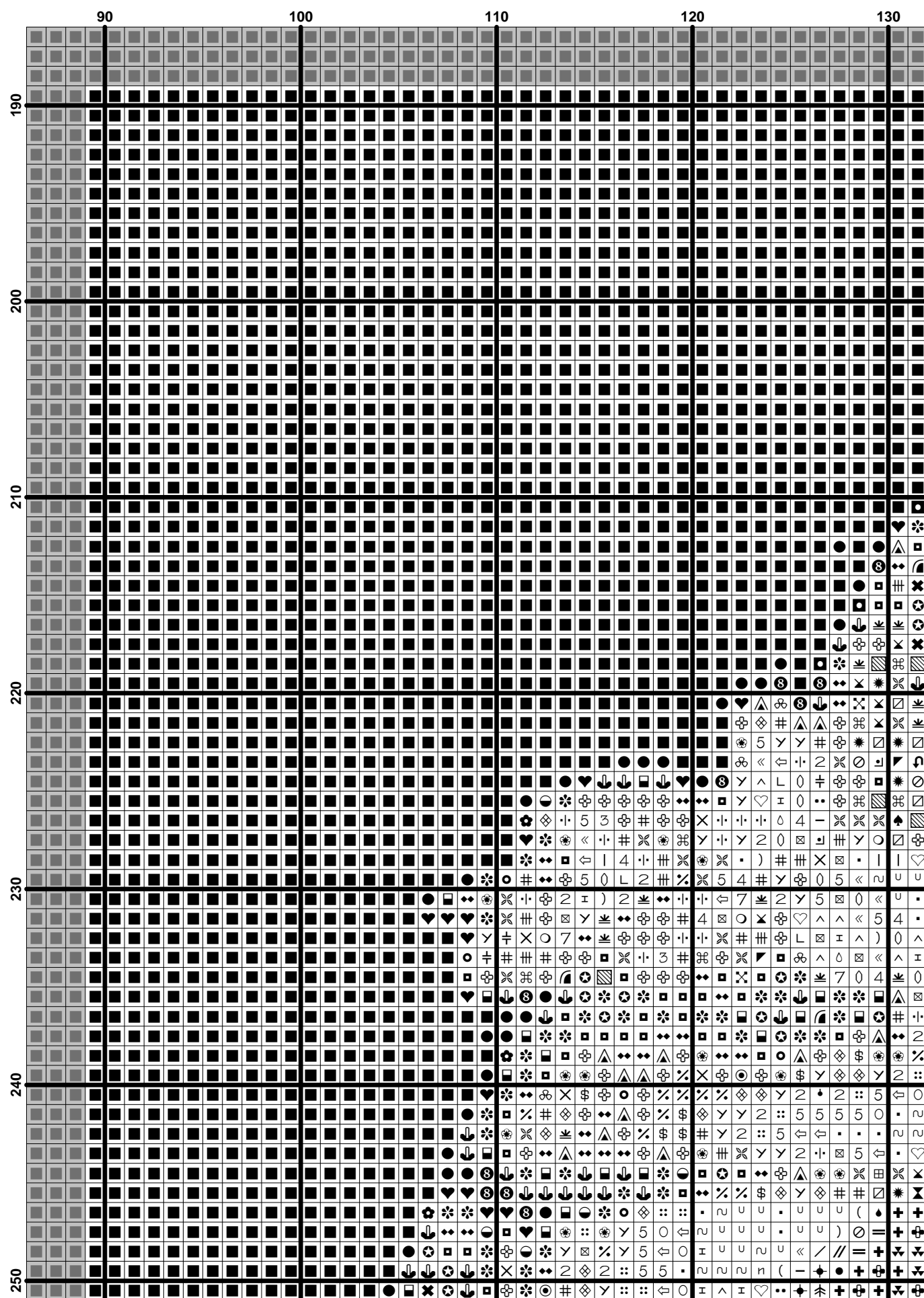
	180	190	200	210
130				
140				
150				
160				
170				
180				





[illegible]

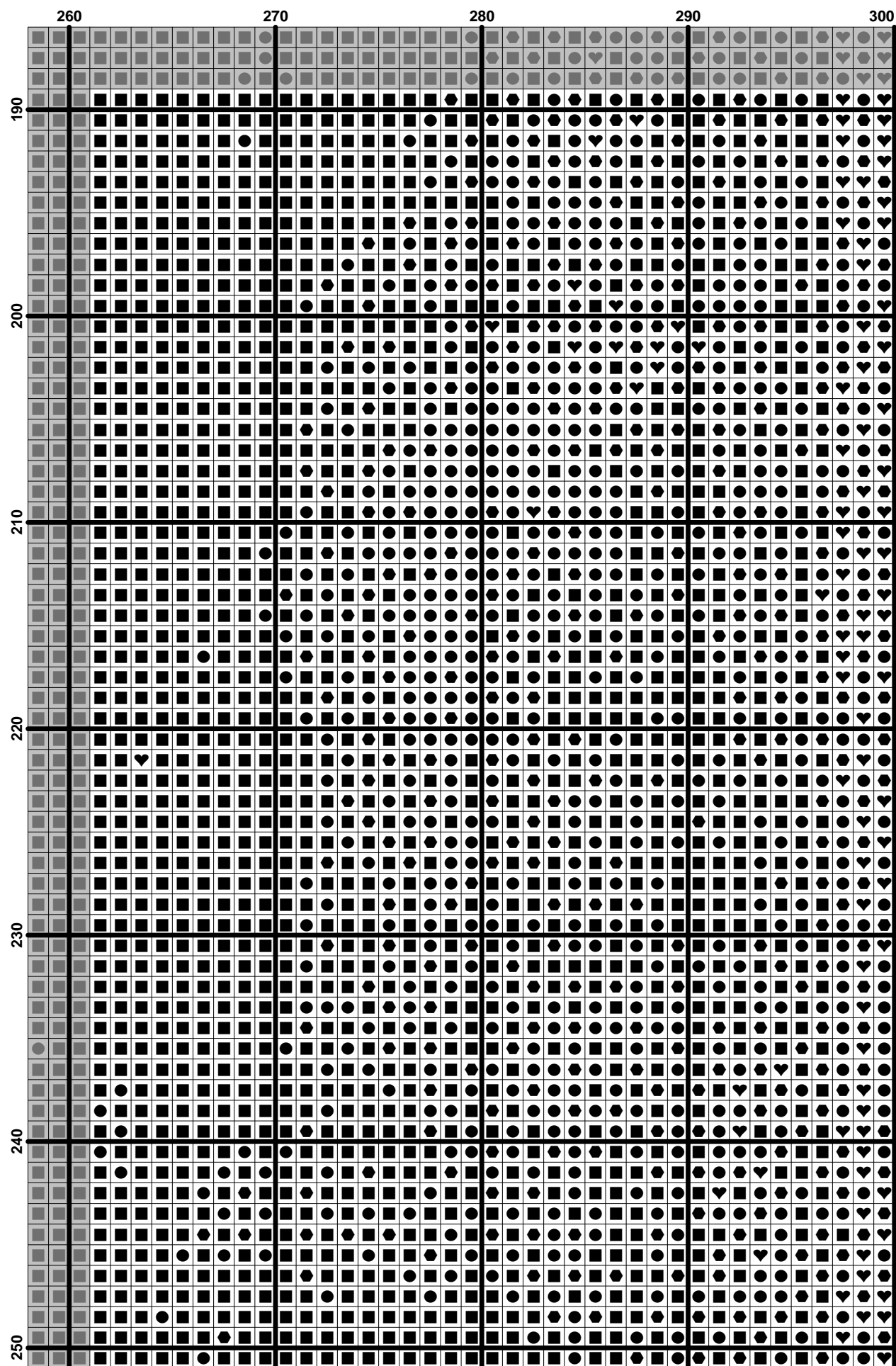


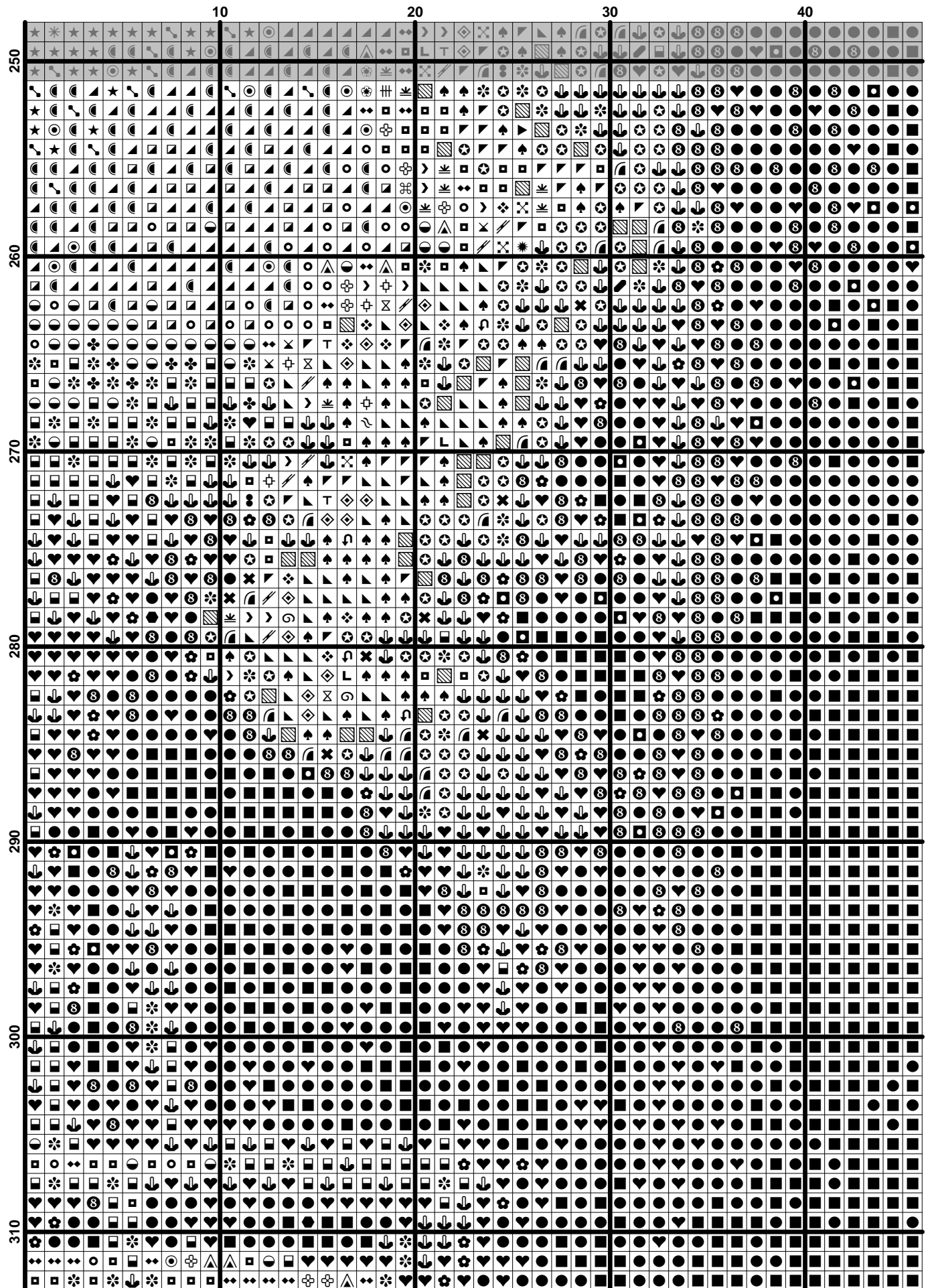


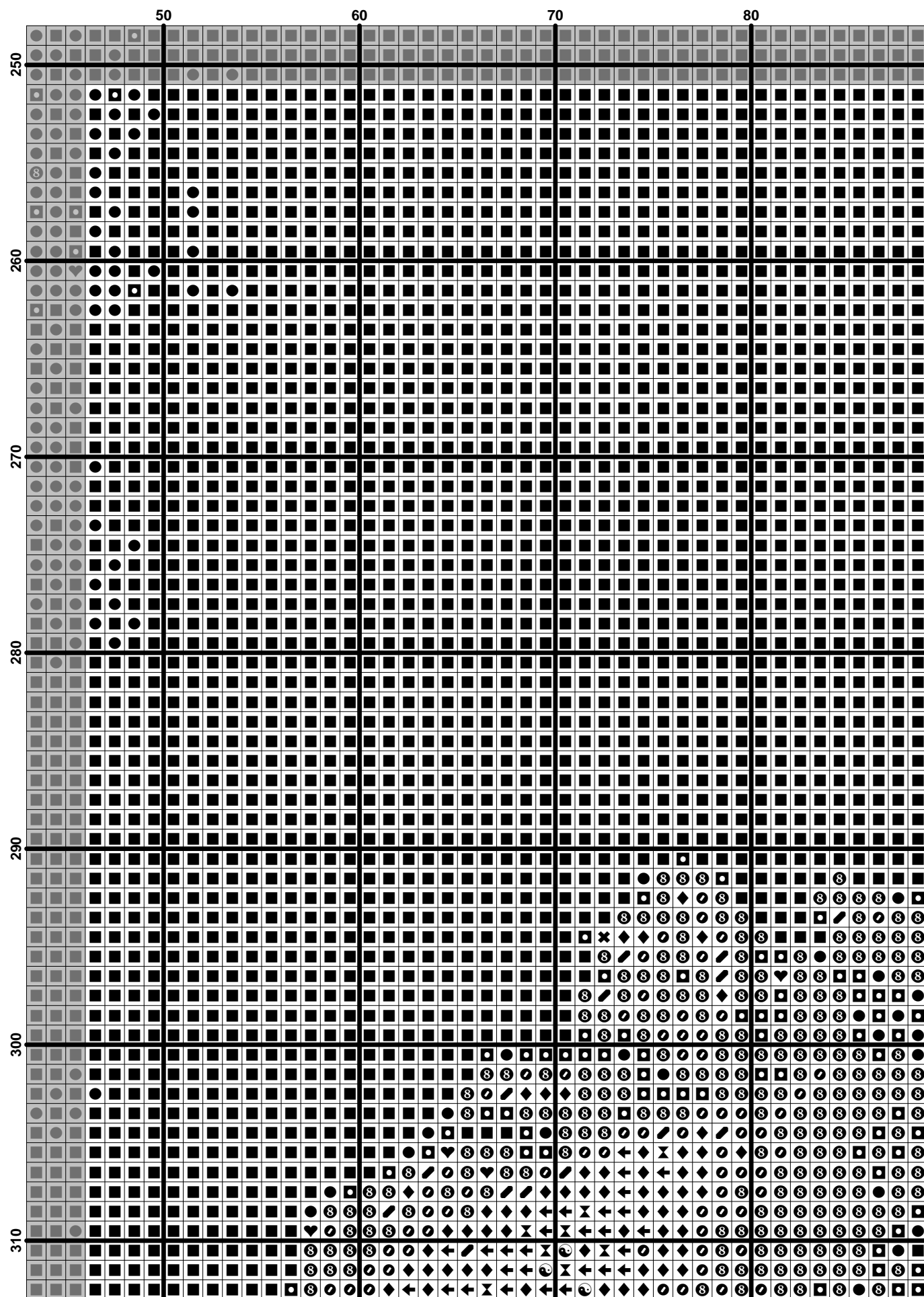
	130	140	150	160	170
190					
200					
210					
220					
230					
240					
250					

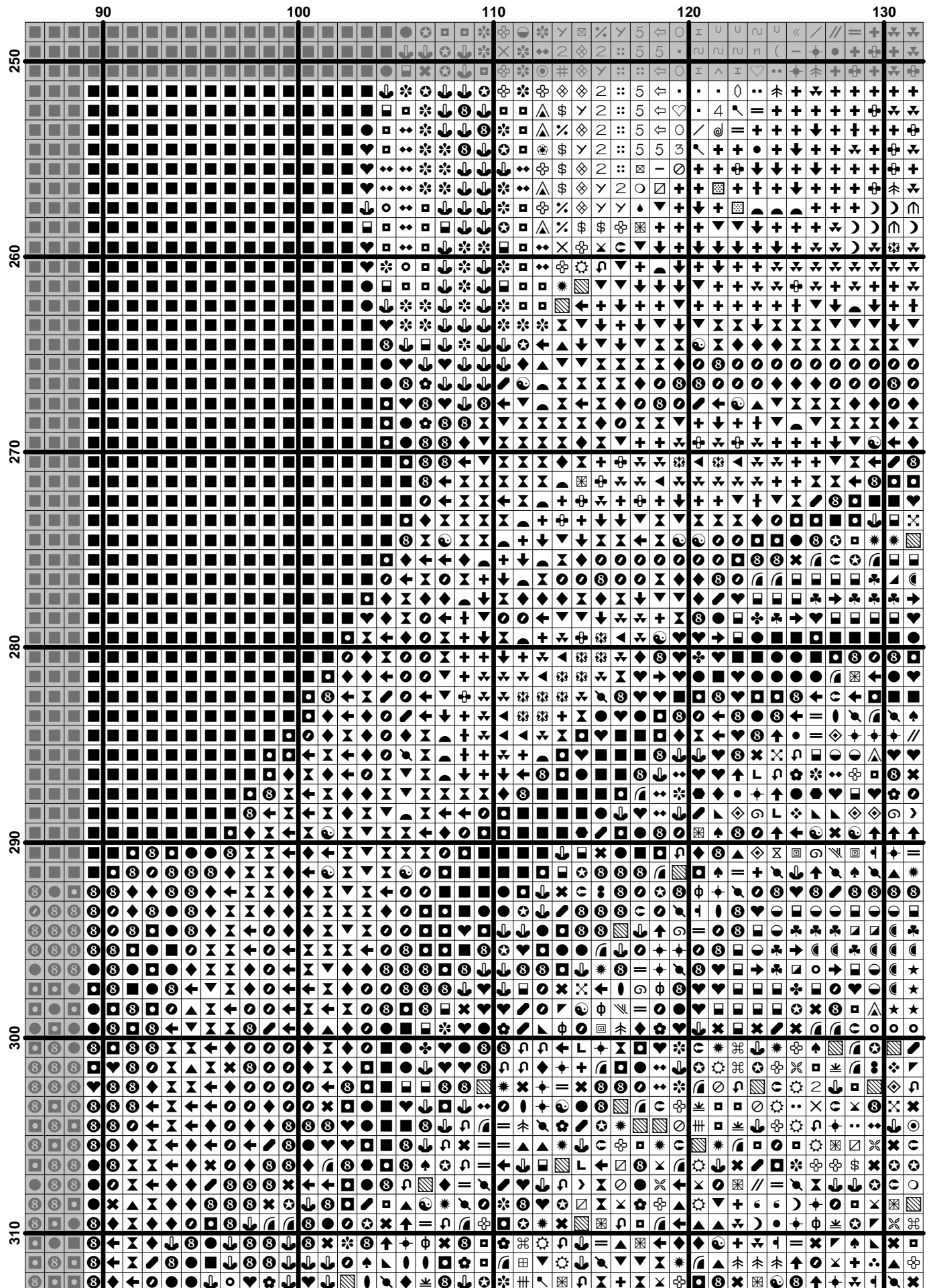
	180										190										200										210																																																																																																																																																																																																																																																																																																																																																																																																																																																																																																																																																																																																																																																																																																																																																																																																																																																																																																																																																																																																																																																																																																																																																																																																																																																																																																																																																																																										
190	4	𐤀	𐤁	𐤂	𐤃	𐤄	𐤅	𐤆	𐤇	𐤈	𐤉	𐤊	𐤋	𐤌	𐤍	𐤎	𐤏	𐤐	𐤑	𐤒	𐤓	𐤔	𐤕	𐤖	𐤗	𐤘	𐤙	𐤚	𐤛	𐤜	𐤝	𐤞	𐤟	𐤠	𐤡	𐤢	𐤣	𐤤	𐤥	𐤦	𐤧	𐤨	𐤩	𐤪	𐤫	𐤬	𐤭	𐤮	𐤯	𐤰	𐤱	𐤲	𐤳	𐤴	𐤵	𐤶	𐤷	𐤸	𐤹	𐤺	𐤻	𐤼	𐤽	𐤾	𐤿	𐥀	𐥁	𐥂	𐥃	𐥄	𐥅	𐥆	𐥇	𐥈	𐥉	𐥊	𐥋	𐥌	𐥍	𐥎	𐥏	𐥐	𐥑	𐥒	𐥓	𐥔	𐥕	𐥖	𐥗	𐥘	𐥙	𐥚	𐥛	𐥜	𐥝	𐥞	𐥟	𐥠	𐥡	𐥢	𐥣	𐥤	𐥥	𐥦	𐥧	𐥨	𐥩	𐥪	𐥫	𐥬	𐥭	𐥮	𐥯	𐥰	𐥱	𐥲	𐥳	𐥴	𐥵	𐥶	𐥷	𐥸	𐥹	𐥺	𐥻	𐥼	𐥽	𐥾	𐥿	𐦀	𐦁	𐦂	𐦃	𐦄	𐦅	𐦆	𐦇	𐦈	𐦉	𐦊	𐦋	𐦌	𐦍	𐦎	𐦏	𐦐	𐦑	𐦒	𐦓	𐦔	𐦕	𐦖	𐦗	𐦘	𐦙	𐦚	𐦛	𐦜	𐦝	𐦞	𐦟	𐦠	𐦡	𐦢	𐦣	𐦤	𐦥	𐦦	𐦧	𐦨	𐦩	𐦪	𐦫	𐦬	𐦭	𐦮	𐦯	𐦰	𐦱	𐦲	𐦳	𐦴	𐦵	𐦶	𐦷	𐦸	𐦹	𐦺	𐦻	𐦼	𐦽	𐦾	𐦿	𐧀	𐧁	𐧂	𐧃	𐧄	𐧅	𐧆	𐧇	𐧈	𐧉	𐧊	𐧋	𐧌	𐧍	𐧎	𐧏	𐧐	𐧑	𐧒	𐧓	𐧔	𐧕	𐧖	𐧗	𐧘	𐧙	𐧚	𐧛	𐧜	𐧝	𐧞	𐧟	𐧠	𐧡	𐧢	𐧣	𐧤	𐧥	𐧦	𐧧	𐧨	𐧩	𐧪	𐧫	𐧬	𐧭	𐧮	𐧯	𐧰	𐧱	𐧲	𐧳	𐧴	𐧵	𐧶	𐧷	𐧸	𐧹	𐧺	𐧻	𐧼	𐧽	𐧾	𐧿	𐨀	𐨁	𐨂	𐨃	𐨄	𐨅	𐨆	𐨇	𐨈	𐨉	𐨊	𐨋	𐨌	𐨍	𐨎	𐨏	𐨐	𐨑	𐨒	𐨓	𐨔	𐨕	𐨖	𐨗	𐨘	𐨙	𐨚	𐨛	𐨜	𐨝	𐨞	𐨟	𐨠	𐨡	𐨢	𐨣	𐨤	𐨥	𐨦	𐨧	𐨨	𐨩	𐨪	𐨫	𐨬	𐨭	𐨮	𐨯	𐨰	𐨱	𐨲	𐨳	𐨴	𐨵	𐨶	𐨷	𐨸	𐨹	𐨺	𐨻	𐨼	𐨽	𐨾	𐨿	𐩀	𐩁	𐩂	𐩃	𐩄	𐩅	𐩆	𐩇	𐩈	𐩉	𐩊	𐩋	𐩌	𐩍	𐩎	𐩏	𐩐	𐩑	𐩒	𐩓	𐩔	𐩕	𐩖	𐩗	𐩘	𐩙	𐩚	𐩛	𐩜	𐩝	𐩞	𐩟	𐩠	𐩡	𐩢	𐩣	𐩤	𐩥	𐩦	𐩧	𐩨	𐩩	𐩪	𐩫	𐩬	𐩭	𐩮	𐩯	𐩰	𐩱	𐩲	𐩳	𐩴	𐩵	𐩶	𐩷	𐩸	𐩹	𐩺	𐩻	𐩼	𐩽	𐩾	𐩿	𐪀	𐪁	𐪂	𐪃	𐪄	𐪅	𐪆	𐪇	𐪈	𐪉	𐪊	𐪋	𐪌	𐪍	𐪎	𐪏	𐪐	𐪑	𐪒	𐪓	𐪔	𐪕	𐪖	𐪗	𐪘	𐪙	𐪚	𐪛	𐪜	𐪝	𐪞	𐪟	𐪠	𐪡	𐪢	𐪣	𐪤	𐪥	𐪦	𐪧	𐪨	𐪩	𐪪	𐪫	𐪬	𐪭	𐪮	𐪯	𐪰	𐪱	𐪲	𐪳	𐪴	𐪵	𐪶	𐪷	𐪸	𐪹	𐪺	𐪻	𐪼	𐪽	𐪾	𐪿	𐫀	𐫁	𐫂	𐫃	𐫄	𐫅	𐫆	𐫇	𐫈	𐫉	𐫊	𐫋	𐫌	𐫍	𐫎	𐫏	𐫐	𐫑	𐫒	𐫓	𐫔	𐫕	𐫖	𐫗	𐫘	𐫙	𐫚	𐫛	𐫜	𐫝	𐫞	𐫟	𐫠	𐫡	𐫢	𐫣	𐫤	𐫥	𐫦	𐫧	𐫨	𐫩	𐫪	𐫫	𐫬	𐫭	𐫮	𐫯	𐫰	𐫱	𐫲	𐫳	𐫴	𐫵	𐫶	𐫷	𐫸	𐫹	𐫺	𐫻	𐫼	𐫽	𐫾	𐫿	𐬀	𐬁	𐬂	𐬃	𐬄	𐬅	𐬆	𐬇	𐬈	𐬉	𐬊	𐬋	𐬌	𐬍	𐬎	𐬏	𐬐	𐬑	𐬒	𐬓	𐬔	𐬕	𐬖	𐬗	𐬘	𐬙	𐬚	𐬛	𐬜	𐬝	𐬞	𐬟	𐬠	𐬡	𐬢	𐬣	𐬤	𐬥	𐬦	𐬧	𐬨	𐬩	𐬪	𐬫	𐬬	𐬭	𐬮	𐬯	𐬰	𐬱	𐬲	𐬳	𐬴	𐬵	𐬶	𐬷	𐬸	𐬹	𐬺	𐬻	𐬼	𐬽	𐬾	𐬿	𐭀	𐭁	𐭂	𐭃	𐭄	𐭅	𐭆	𐭇	𐭈	𐭉	𐭊	𐭋	𐭌	𐭍	𐭎	𐭏	𐭐	𐭑	𐭒	𐭓	𐭔	𐭕	𐭖	𐭗	𐭘	𐭙	𐭚	𐭛	𐭜	𐭝	𐭞	𐭟	𐭠	𐭡	𐭢	𐭣	𐭤	𐭥	𐭦	𐭧	𐭨	𐭩	𐭪	𐭫	𐭬	𐭭	𐭮	𐭯	𐭰	𐭱	𐭲	𐭳	𐭴	𐭵	𐭶	𐭷	𐭸	𐭹	𐭺	𐭻	𐭼	𐭽	𐭾	𐭿	𐮀	𐮁	𐮂	𐮃	𐮄	𐮅	𐮆	𐮇	𐮈	𐮉	𐮊	𐮋	𐮌	𐮍	𐮎	𐮏	𐮐	𐮑	𐮒	𐮓	𐮔	𐮕	𐮖	𐮗	𐮘	𐮙	𐮚	𐮛	𐮜	𐮝	𐮞	𐮟	𐮠	𐮡	𐮢	𐮣	𐮤	𐮥	𐮦	𐮧	𐮨	𐮩	𐮪	𐮫	𐮬	𐮭	𐮮	𐮯	𐮰	𐮱	𐮲	𐮳	𐮴	𐮵	𐮶	𐮷	𐮸	𐮹	𐮺	𐮻	𐮼	𐮽	𐮾	𐮿	𐯀	𐯁	𐯂	𐯃	𐯄	𐯅	𐯆	𐯇	𐯈	𐯉	𐯊	𐯋	𐯌	𐯍	𐯎	𐯏	𐯐	𐯑	𐯒	𐯓	𐯔	𐯕	𐯖	𐯗	𐯘	𐯙	𐯚	𐯛	𐯜	𐯝	𐯞	𐯟	𐯠	𐯡	𐯢	𐯣	𐯤	𐯥	𐯦	𐯧	𐯨	𐯩	𐯪	𐯫	𐯬	𐯭	𐯮	𐯯	𐯰	𐯱	𐯲	𐯳	𐯴	𐯵	𐯶	𐯷	𐯸	𐯹	𐯺	𐯻	𐯼	𐯽	𐯾	𐯿	𐰀	𐰁	𐰂	𐰃	𐰄	𐰅	𐰆	𐰇	𐰈	𐰉	𐰊	𐰋	𐰌	𐰍	𐰎	𐰏	𐰐	𐰑	𐰒	𐰓	𐰔	𐰕	𐰖	𐰗	𐰘	𐰙	𐰚	𐰛	𐰜	𐰝	𐰞	𐰟	𐰠	𐰡	𐰢	𐰣	𐰤	𐰥	𐰦	𐰧	𐰨	𐰩	𐰪	𐰫	𐰬	𐰭	𐰮	𐰯	𐰰	𐰱	𐰲	𐰳	𐰴	𐰵	𐰶	𐰷	𐰸	𐰹	𐰺	𐰻	𐰼	𐰽	𐰾	𐰿	𐱀	𐱁	𐱂	𐱃	𐱄	𐱅	𐱆	𐱇	𐱈	𐱉	𐱊	𐱋	𐱌	𐱍	𐱎	𐱏	𐱐	𐱑	𐱒	𐱓	𐱔	𐱕	𐱖	𐱗	𐱘	𐱙	𐱚	𐱛	𐱜	𐱝	𐱞	𐱟	𐱠	𐱡	𐱢	𐱣	𐱤	𐱥	𐱦	𐱧	𐱨	𐱩	𐱪	𐱫	𐱬	𐱭	𐱮	𐱯	𐱰	𐱱	𐱲	𐱳	𐱴	𐱵	𐱶	𐱷	𐱸	𐱹	𐱺	𐱻	𐱼	𐱽	𐱾	𐱿	𐲀	𐲁	𐲂	𐲃	𐲄	𐲅	𐲆	𐲇	𐲈	𐲉	𐲊	𐲋	𐲌	𐲍	𐲎	𐲏	𐲐	𐲑	𐲒	𐲓	𐲔	𐲕	𐲖	𐲗	𐲘	𐲙	𐲚	𐲛	𐲜	𐲝	𐲞	𐲟	𐲠	𐲡	𐲢	𐲣	𐲤	𐲥	𐲦	𐲧	𐲨	𐲩	𐲪	𐲫	𐲬	𐲭	𐲮	𐲯	𐲰	𐲱	𐲲	𐲳	𐲴	𐲵	𐲶	𐲷	𐲸	𐲹	𐲺	𐲻	𐲼	𐲽	𐲾	𐲿	𐳀	𐳁	𐳂	𐳃	𐳄	𐳅	𐳆	𐳇	𐳈	𐳉	𐳊	𐳋	𐳌	𐳍	𐳎	𐳏	𐳐	𐳑	𐳒	𐳓	𐳔	𐳕	𐳖	𐳗	𐳘	𐳙	𐳚	𐳛	𐳜	𐳝	𐳞	𐳟	𐳠	𐳡	𐳢	𐳣	𐳤	𐳥	𐳦	𐳧	𐳨	𐳩	𐳪	𐳫	𐳬	𐳭	𐳮	𐳯	𐳰	𐳱	𐳲	𐳳	𐳴	𐳵	𐳶	𐳷	𐳸	𐳹	𐳺	𐳻	𐳼	𐳽	𐳾	𐳿	𐴀	𐴁	𐴂	𐴃	𐴄	𐴅	𐴆	𐴇	𐴈	𐴉	𐴊	𐴋	𐴌	𐴍	𐴎	𐴏	𐴐	𐴑	𐴒	𐴓	𐴔	𐴕	𐴖	𐴗	𐴘	𐴙	𐴚	𐴛	𐴜	𐴝	𐴞	𐴟	𐴠	𐴡	𐴢	𐴣	𐴤	𐴥	𐴦	𐴧	𐴨	𐴩	𐴪	𐴫	𐴬	𐴭	𐴮	𐴯	𐴰	𐴱	𐴲	𐴳	𐴴	𐴵	𐴶	𐴷	𐴸	𐴹	𐴺	𐴻	𐴼	𐴽	𐴾	𐴿	𐵀	𐵁	𐵂	𐵃	𐵄	𐵅	𐵆	𐵇	𐵈	𐵉	𐵊	𐵋	𐵌	𐵍	𐵎	𐵏	𐵐	𐵑	𐵒	𐵓	𐵔	𐵕	𐵖	𐵗	𐵘	𐵙	𐵚	𐵛	𐵜	𐵝	𐵞	𐵟	𐵠	𐵡	𐵢	𐵣	𐵤	𐵥	𐵦	𐵧	𐵨	𐵩	𐵪	𐵫	𐵬	𐵭	𐵮	𐵯	𐵰	𐵱	𐵲	𐵳	𐵴	𐵵	𐵶	𐵷	𐵸	𐵹	𐵺	𐵻	𐵼	𐵽	𐵾	𐵿	𐶀	𐶁	𐶂	𐶃	𐶄	𐶅	𐶆	𐶇	𐶈	𐶉	𐶊	𐶋	𐶌	𐶍	𐶎	𐶏	𐶐	𐶑	𐶒	𐶓	𐶔	𐶕	𐶖	𐶗	𐶘	𐶙	𐶚	𐶛	𐶜	𐶝	𐶞	𐶟	𐶠	𐶡	𐶢	𐶣	𐶤	𐶥	𐶦	𐶧	𐶨	𐶩	𐶪	𐶫	𐶬	𐶭	𐶮	𐶯	𐶰	𐶱	𐶲	𐶳	𐶴	𐶵	𐶶	𐶷	𐶸	𐶹	𐶺	𐶻	𐶼	𐶽	𐶾	𐶿	𐷀	𐷁	𐷂	𐷃	𐷄	𐷅	𐷆	𐷇	𐷈	𐷉	𐷊	𐷋	𐷌	𐷍	𐷎	𐷏	𐷐	𐷑	𐷒	𐷓	𐷔	𐷕	𐷖	𐷗	𐷘	𐷙	𐷚	𐷛	𐷜	𐷝	𐷞	𐷟	𐷠	𐷡	𐷢	𐷣	𐷤	𐷥	𐷦	𐷧	𐷨	𐷩	𐷪	𐷫	𐷬	𐷭	𐷮	𐷯	𐷰	𐷱	𐷲	𐷳	𐷴	𐷵	𐷶	𐷷	𐷸	𐷹	𐷺	𐷻	𐷼	𐷽	𐷾	𐷿	𐸀	𐸁	𐸂	𐸃	𐸄	𐸅	𐸆	𐸇	𐸈	𐸉	𐸊	𐸋	𐸌	𐸍	𐸎	𐸏	𐸐	𐸑	𐸒	𐸓	𐸔	𐸕	𐸖	𐸗	𐸘	𐸙	𐸚	𐸛	𐸜	𐸝	𐸞	𐸟	𐸠	𐸡	𐸢	𐸣	𐸤	𐸥	𐸦	𐸧	𐸨	𐸩	𐸪	𐸫	𐸬	𐸭	𐸮	𐸯	𐸰	𐸱	𐸲	𐸳	𐸴	𐸵	𐸶	𐸷	𐸸	𐸹	𐸺	𐸻	𐸼	𐸽	𐸾	𐸿	𐹀	𐹁	𐹂	𐹃	𐹄	𐹅	𐹆	𐹇	𐹈	𐹉	𐹊	𐹋	𐹌	𐹍	𐹎	𐹏	𐹐	𐹑	𐹒	𐹓	𐹔	𐹕	𐹖	

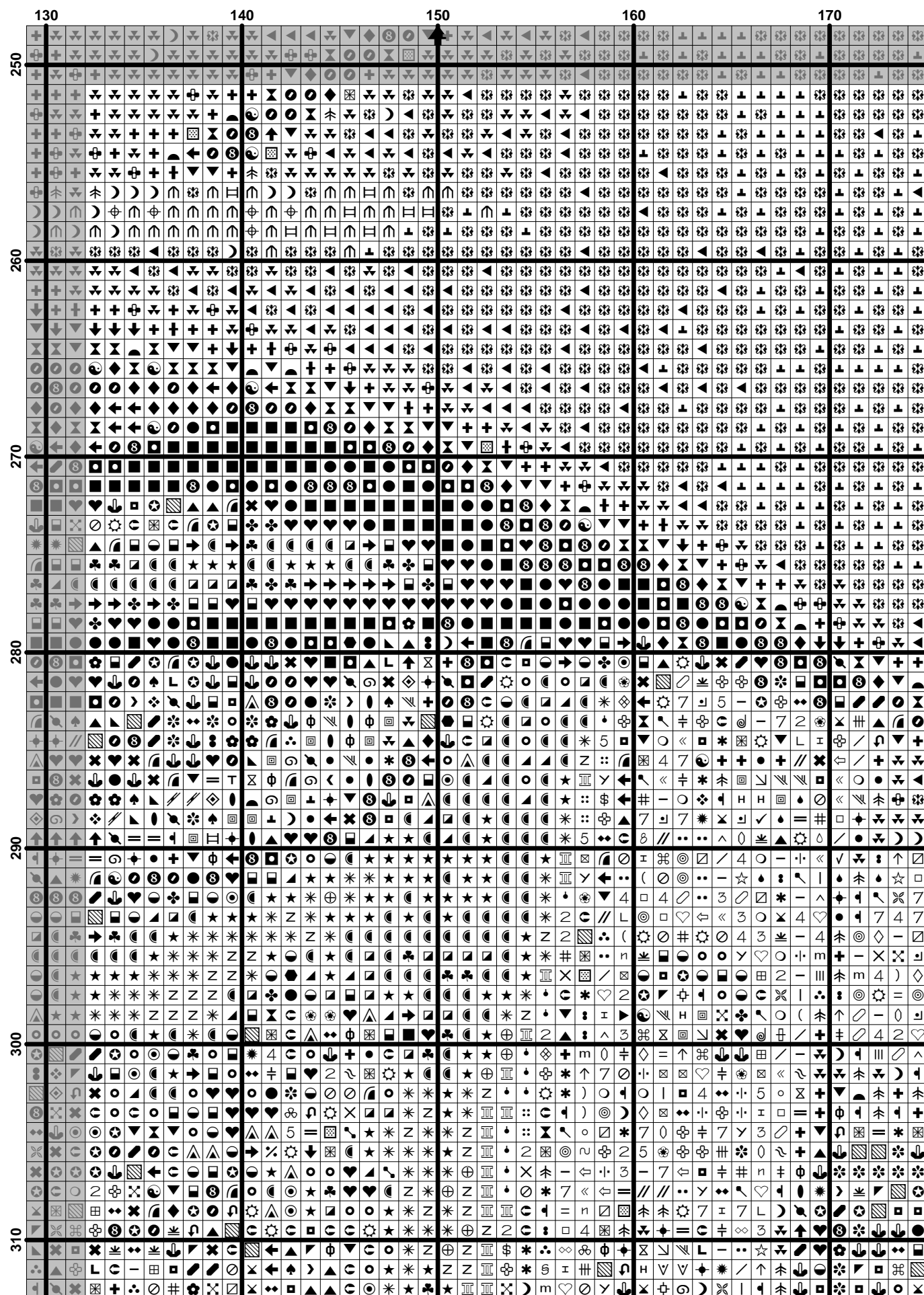
$$(34) \quad \frac{1}{\Gamma(\alpha)} \int_0^t (t-s)^{\alpha-1} f(s) ds = \frac{1}{\Gamma(\alpha)} \int_0^t (t-s)^{\alpha-1} \left(\sum_{k=0}^\infty \frac{(t-s)^k}{k!} f^{(k)}(s) \right) ds$$











$$(40) \quad \frac{1}{\Gamma(\alpha)} \int_0^t (t-s)^{\alpha-1} f(s) ds = \frac{1}{\Gamma(\alpha)} \int_0^t (t-s)^{\alpha-1} g(s) ds + \frac{1}{\Gamma(\alpha)} \int_0^t (t-s)^{\alpha-1} h(s) ds$$

