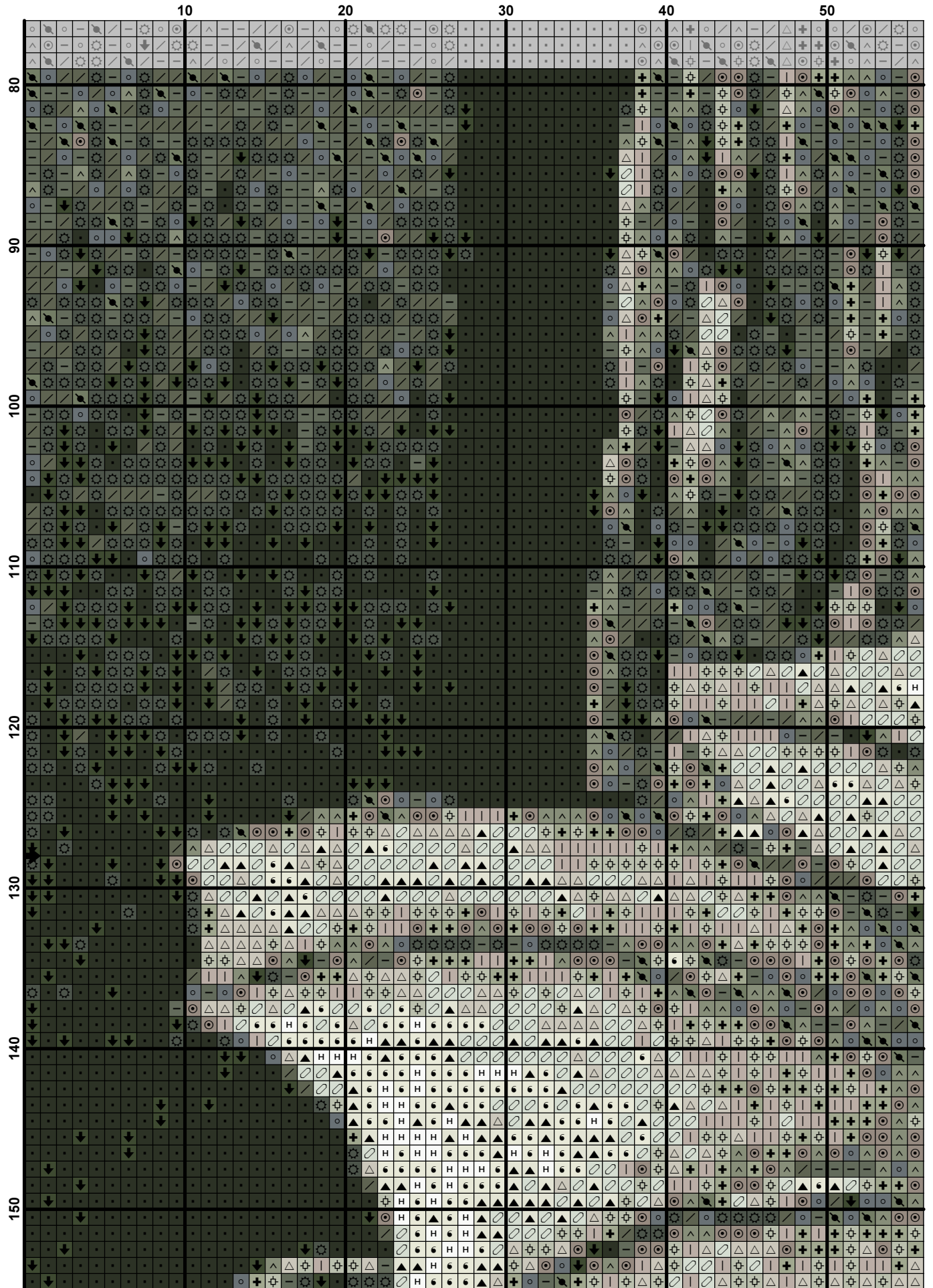
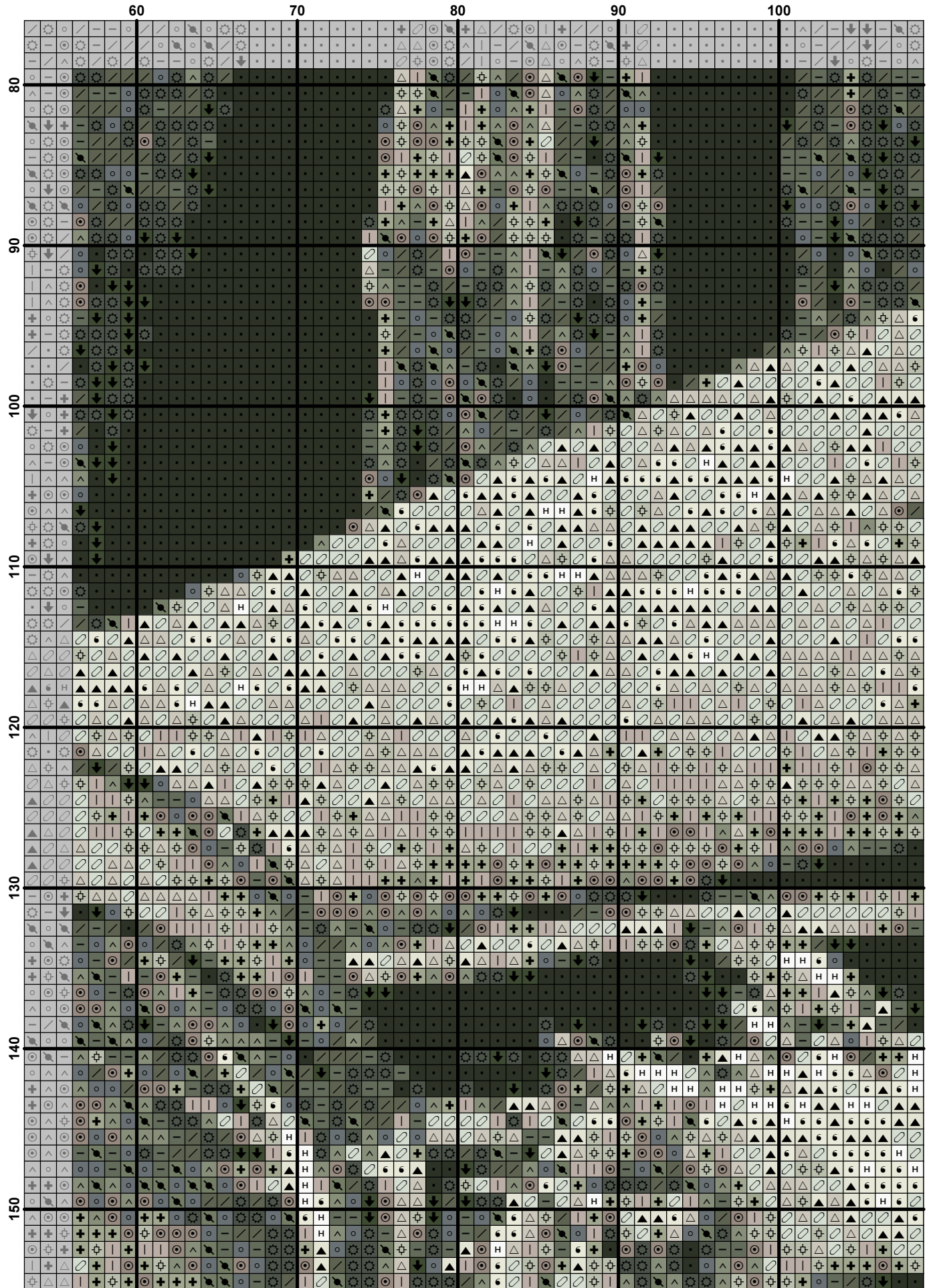
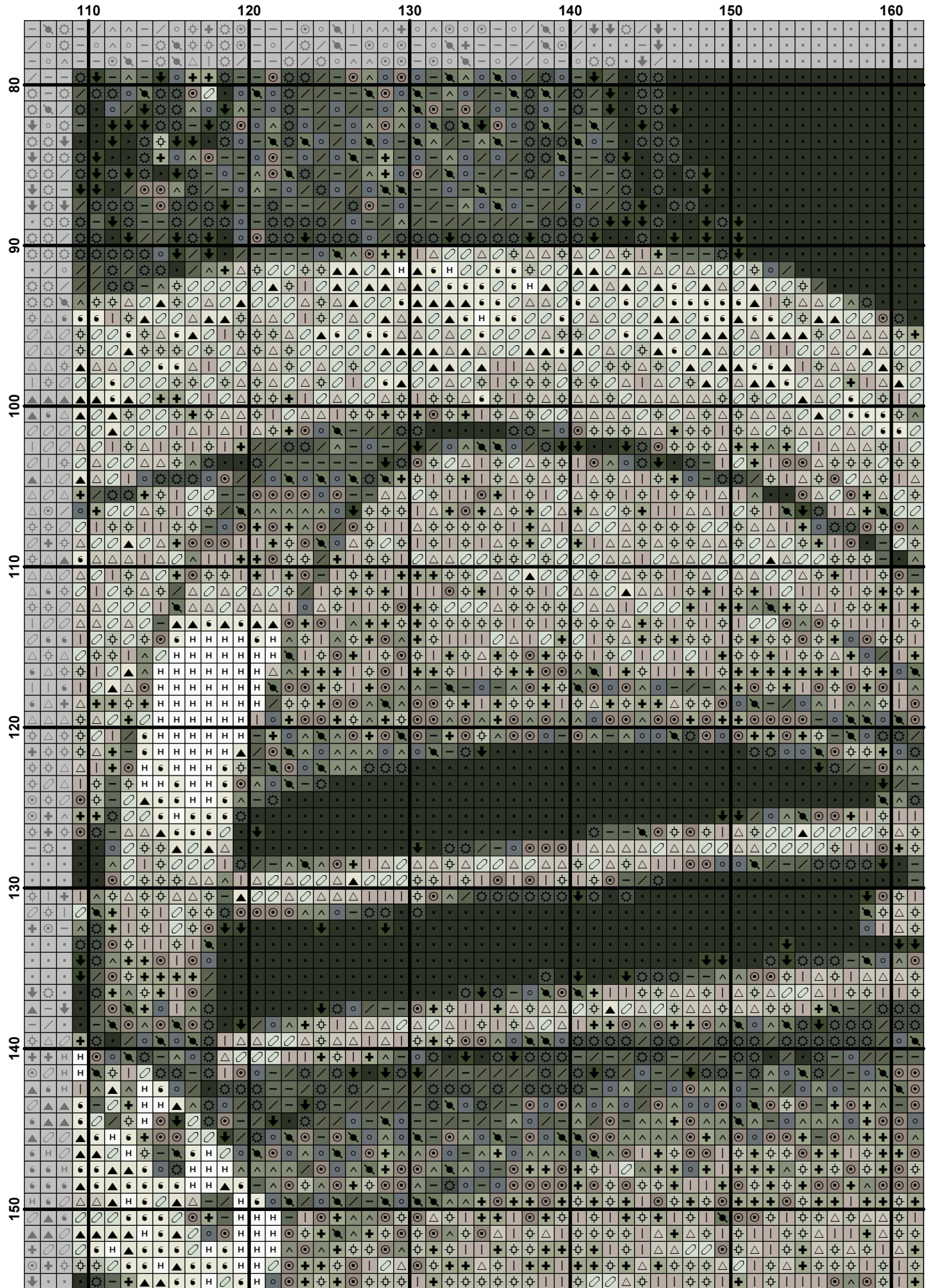
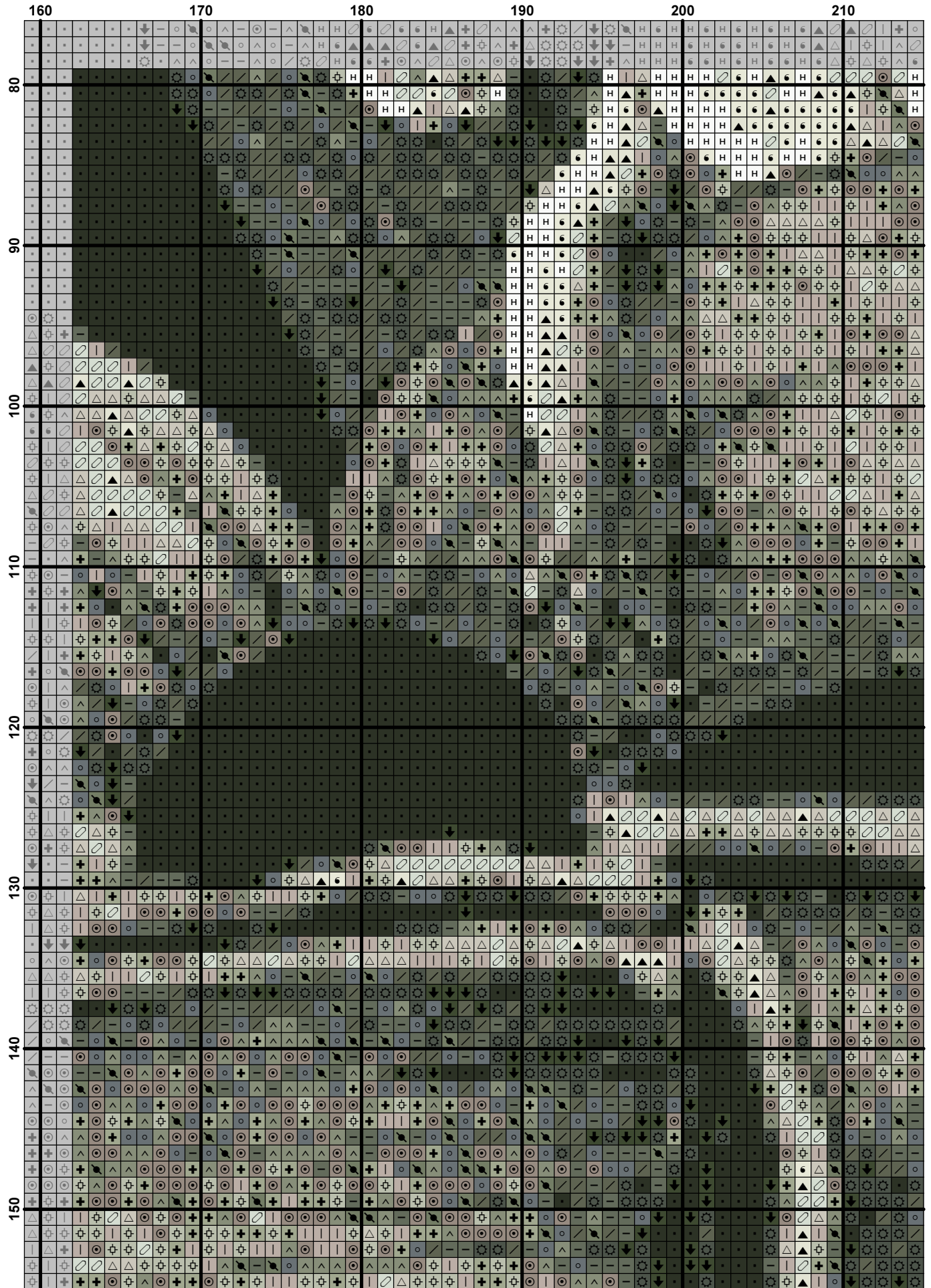


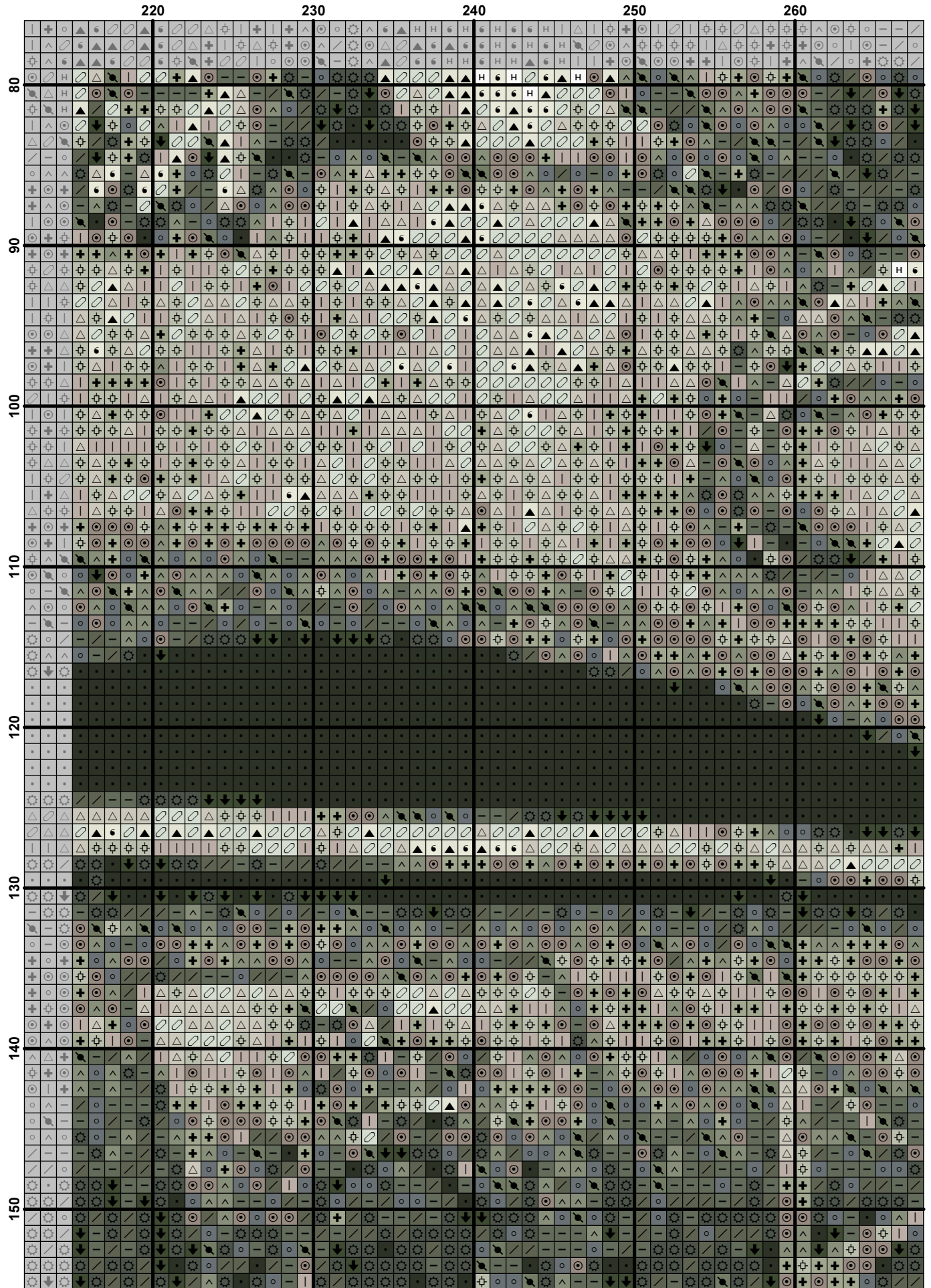
	270	280	290	300	310	320
10	⬆	⬆	⬆	⬆	⬆	⬆
20	⬆	⬆	⬆	⬆	⬆	⬆
30	⬆	⬆	⬆	⬆	⬆	⬆
40	⬆	⬆	⬆	⬆	⬆	⬆
50	⬆	⬆	⬆	⬆	⬆	⬆
60	⬆	⬆	⬆	⬆	⬆	⬆
70	⬆	⬆	⬆	⬆	⬆	⬆

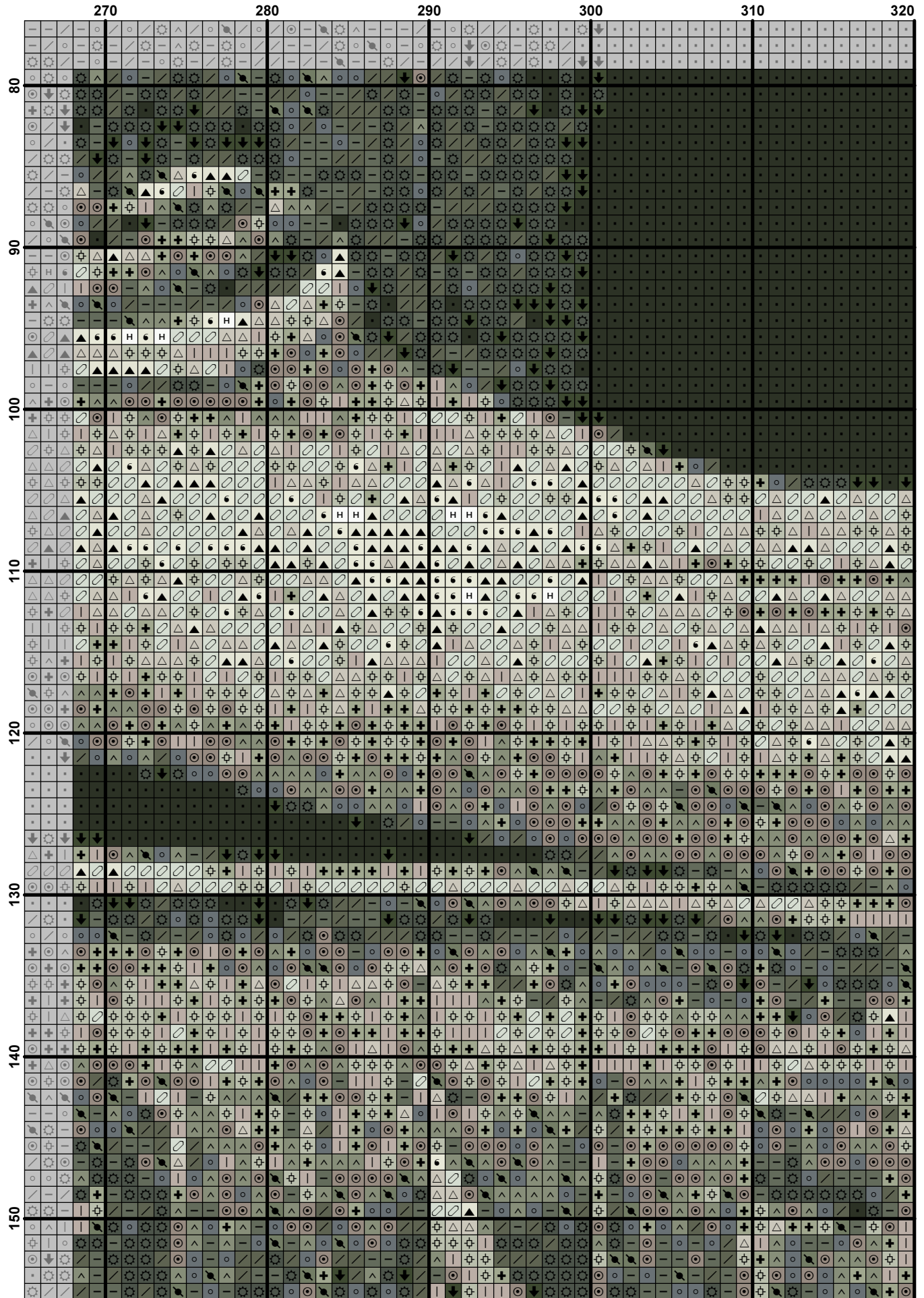


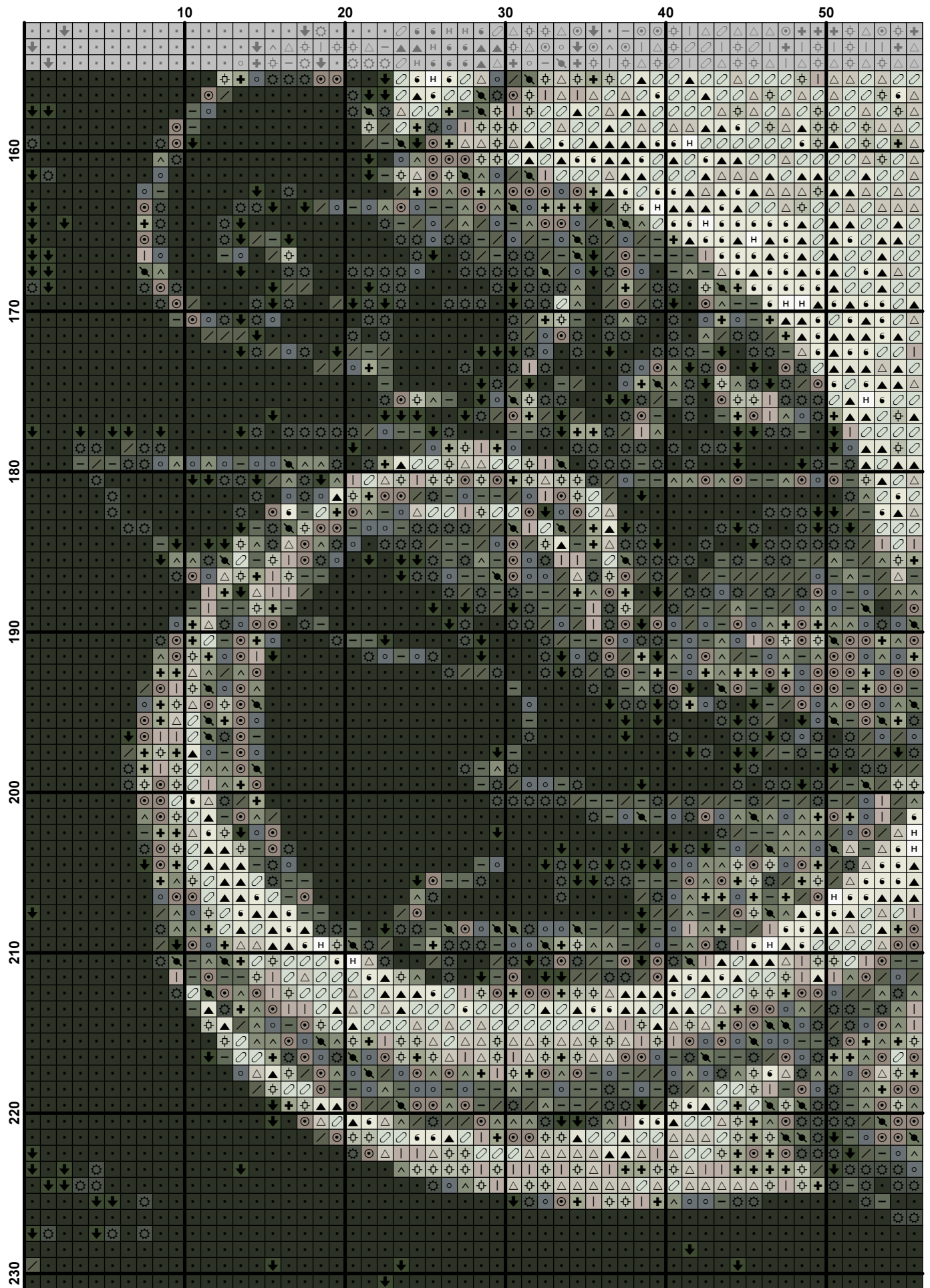


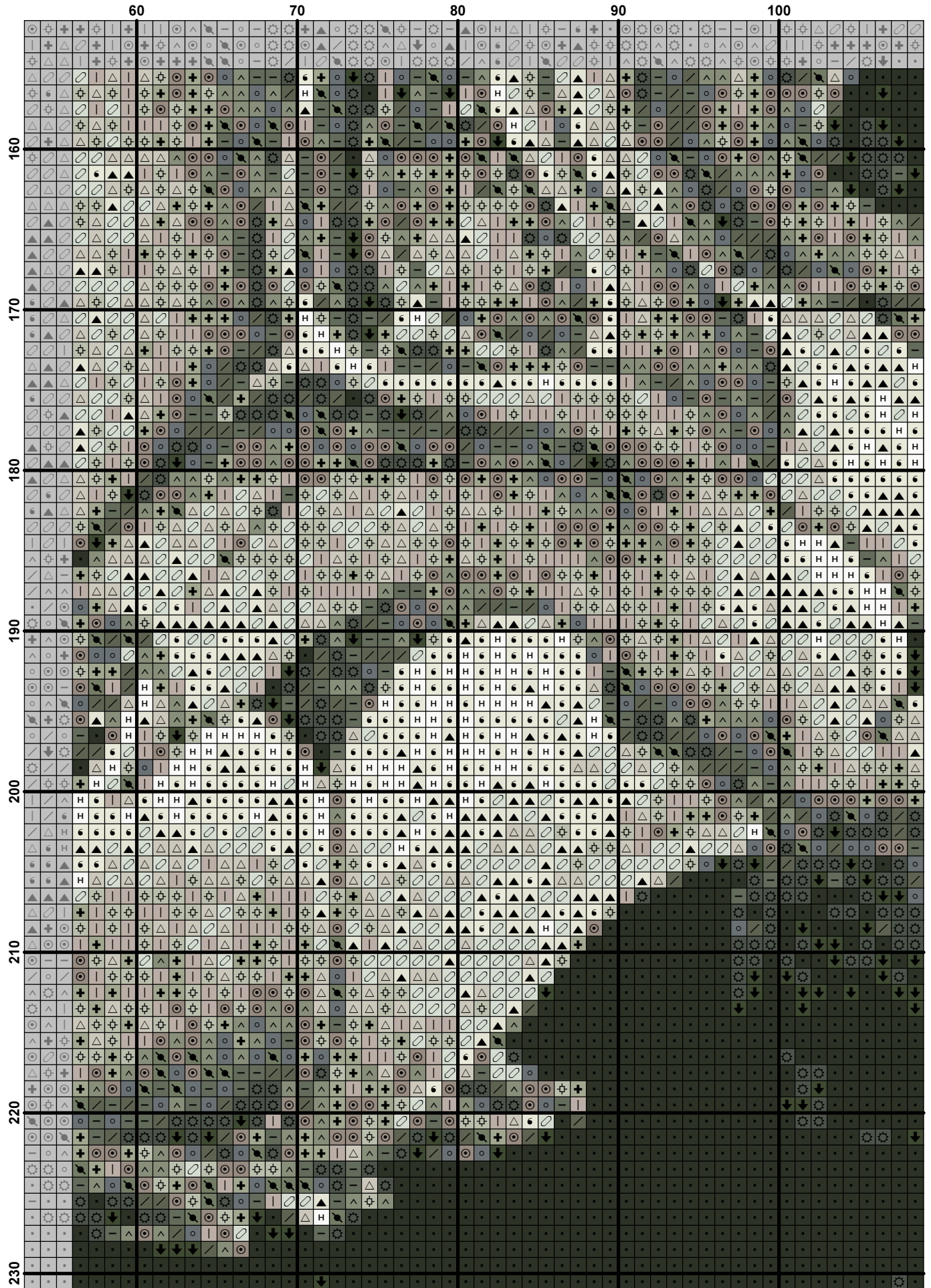




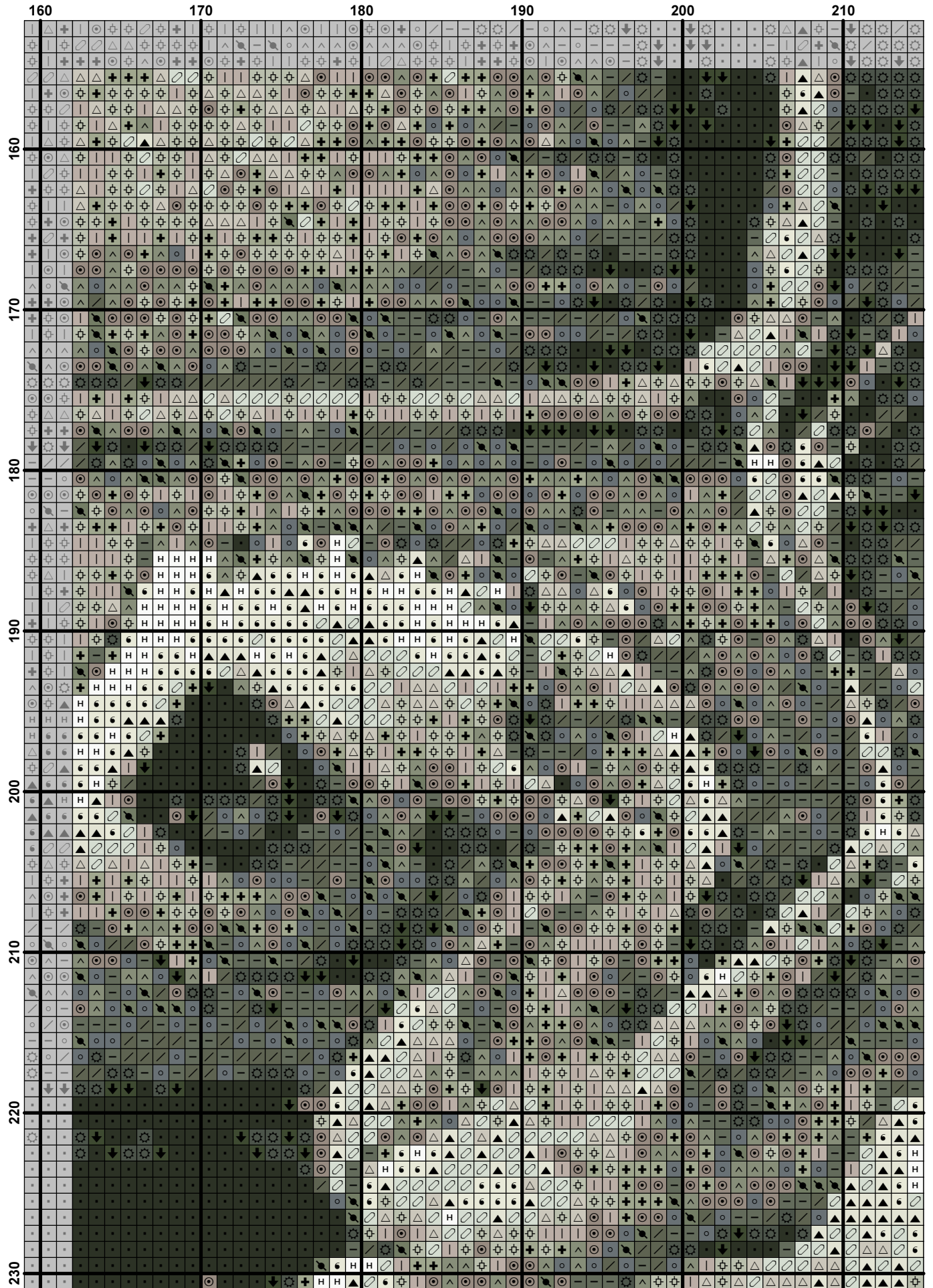


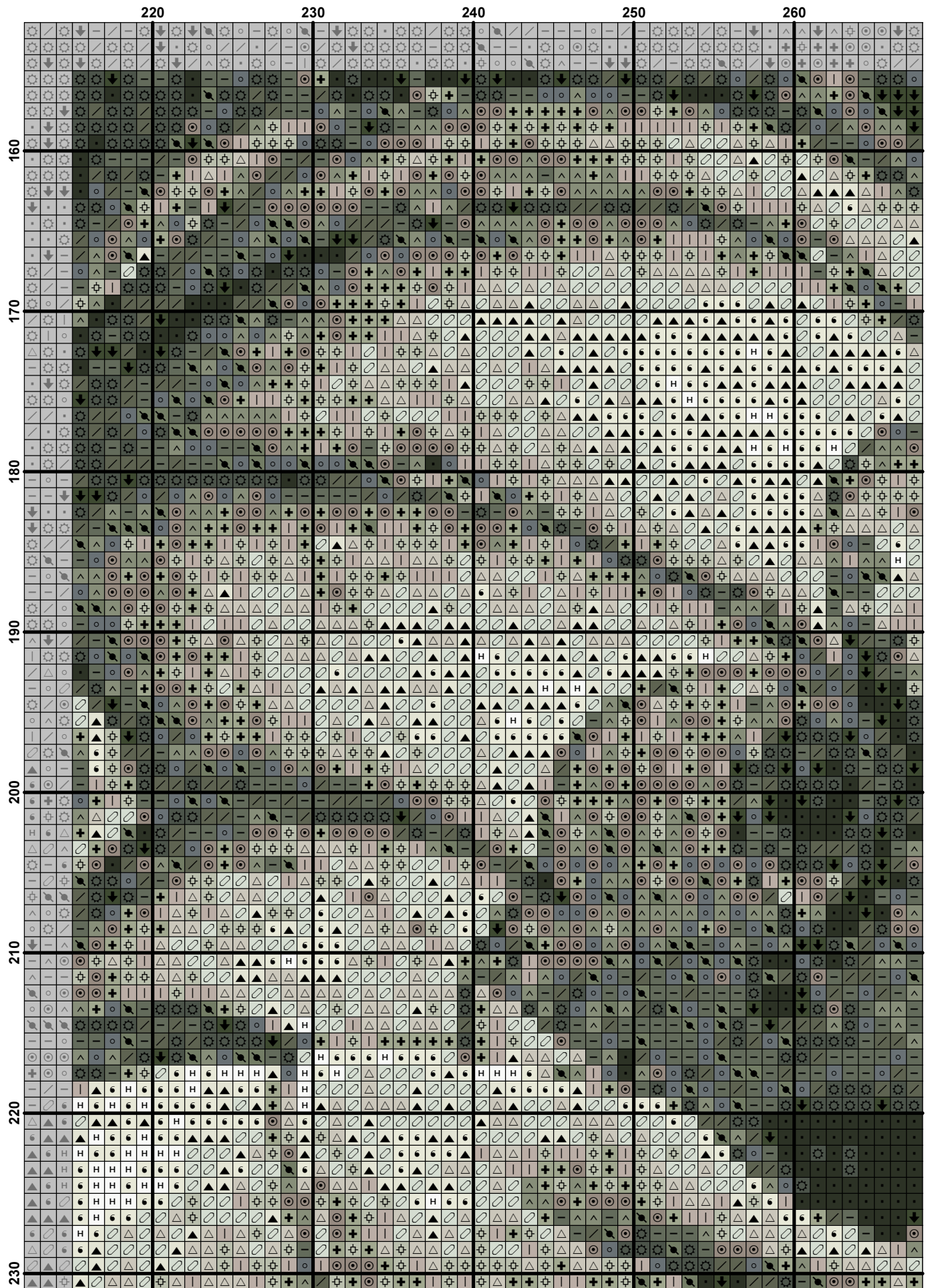




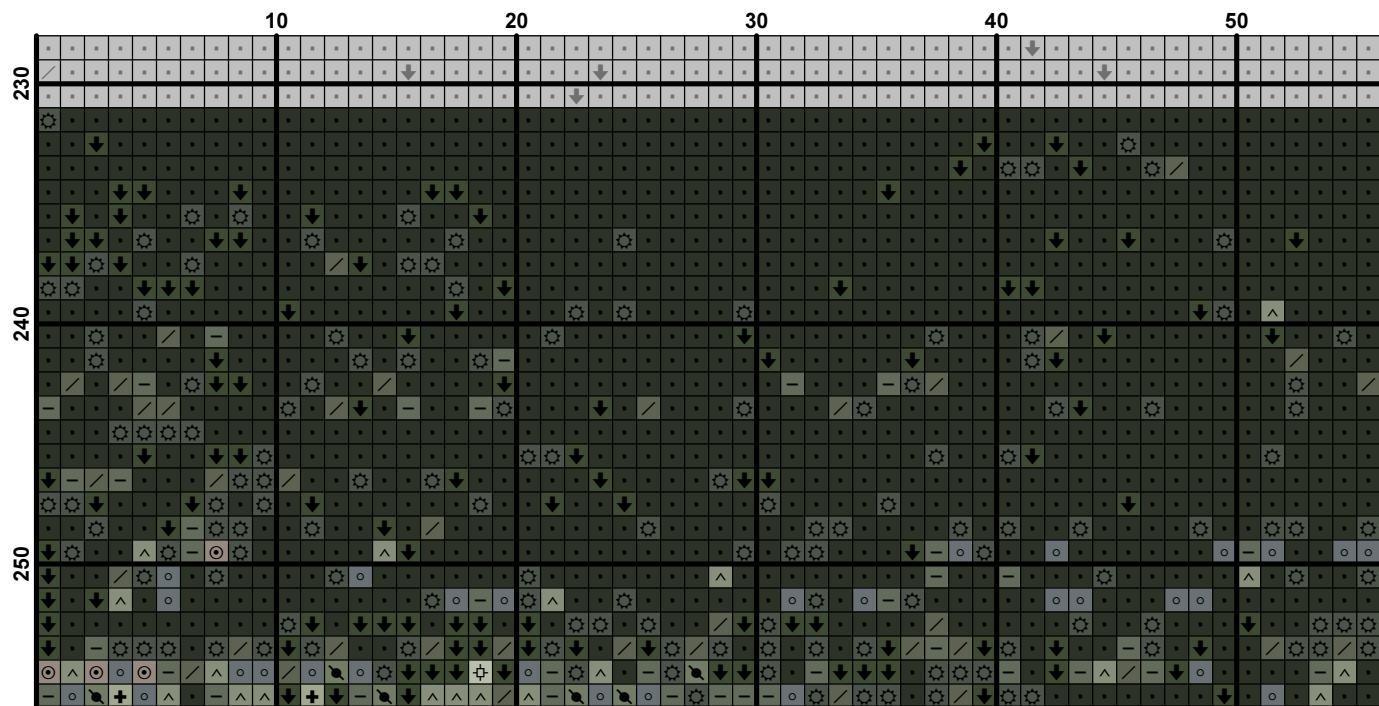


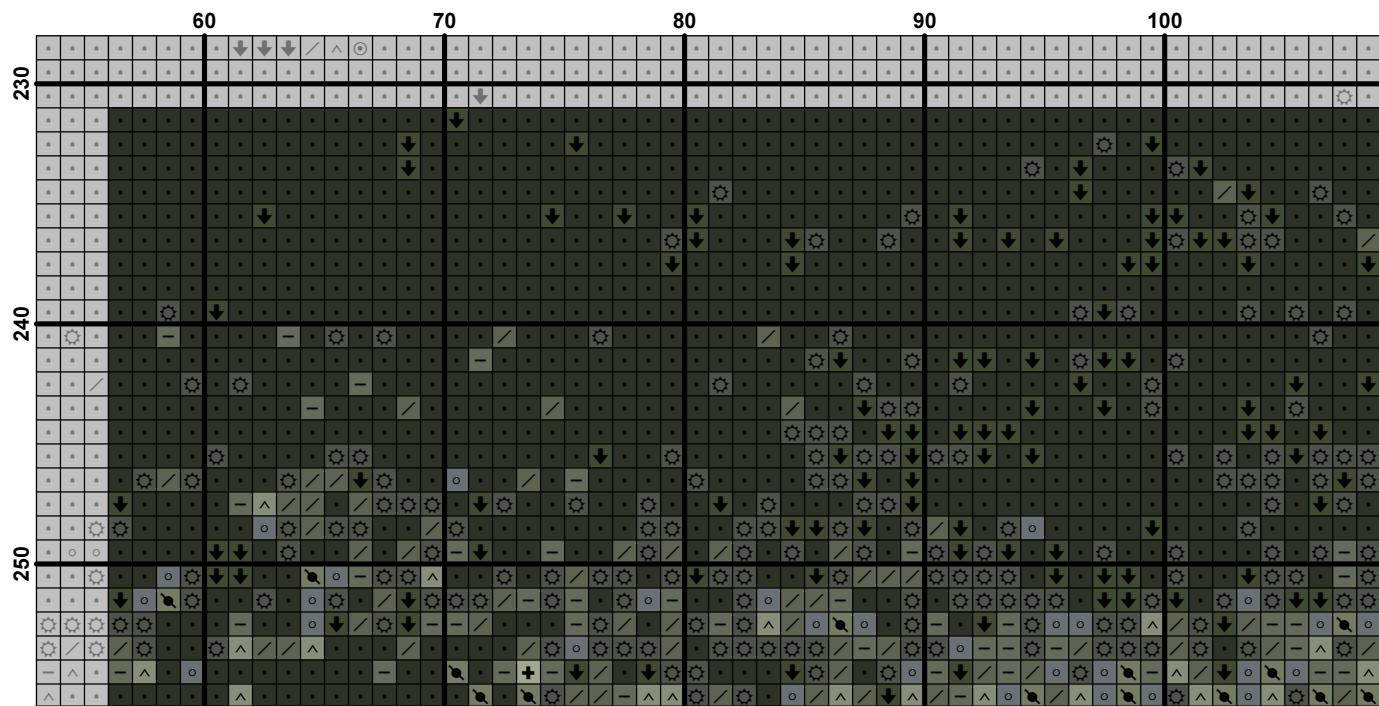
	110	120	130	140	150	160
160	+	+	+	+	+	+
170	+	+	+	+	+	+
180	+	+	+	+	+	+
190	+	+	+	+	+	+
200	+	+	+	+	+	+
210	+	+	+	+	+	+
220	+	+	+	+	+	+
230	+	+	+	+	+	+

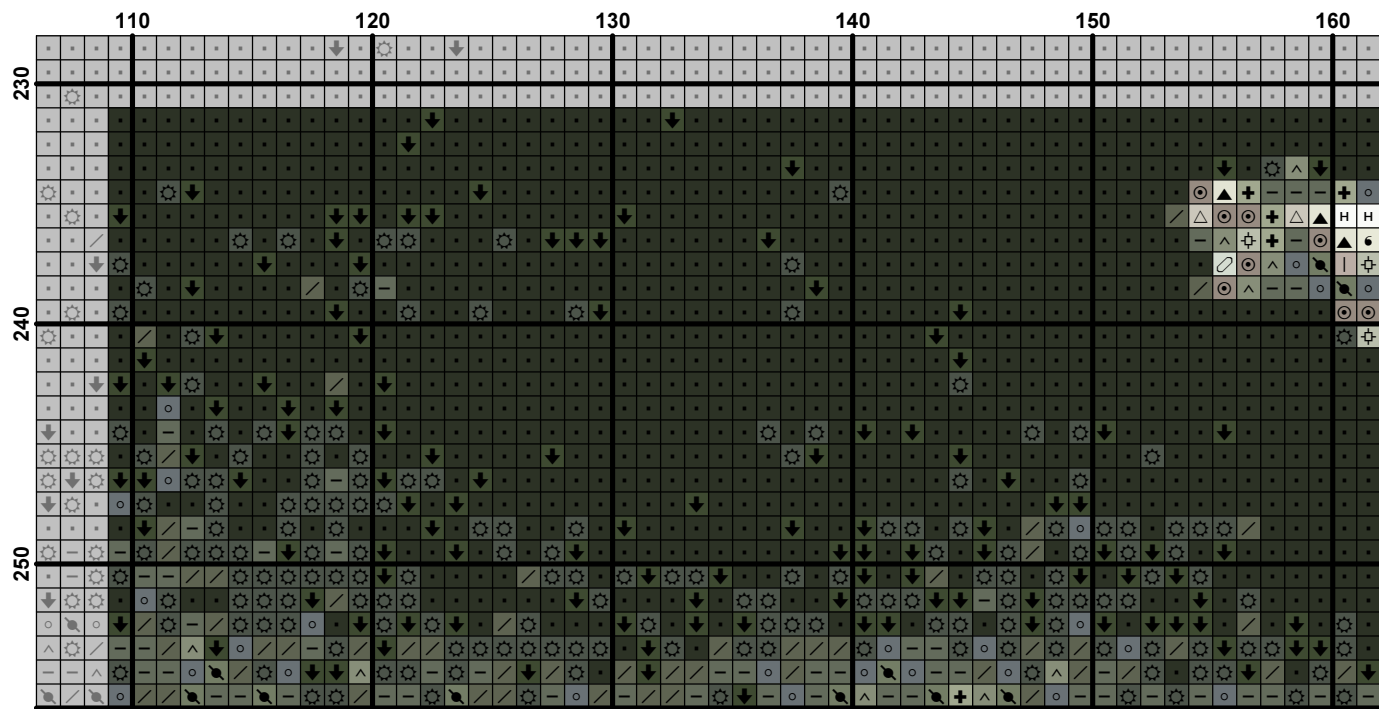




	270	280	290	300	310	320
160	⊙	⊙	⊙	⊙	⊙	⊙
170	⊙	⊙	⊙	⊙	⊙	⊙
180	⊙	⊙	⊙	⊙	⊙	⊙
190	⊙	⊙	⊙	⊙	⊙	⊙
200	⊙	⊙	⊙	⊙	⊙	⊙
210	⊙	⊙	⊙	⊙	⊙	⊙
220	⊙	⊙	⊙	⊙	⊙	⊙
230	⊙	⊙	⊙	⊙	⊙	⊙










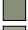
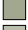












	160	170	180	190	200	210
230
240
250

Fabric: Aida 27, White
 320w X 256h Stitches
Size: 27 Count, 30.10w X 24.08h cm

Floss Used for Half Stitches:

Symbol	Strands	Type	Number	Color
	2	DMC	310	Black
	2	DMC	317	Pewter Gray
	2	DMC	451	Shell Gray-DK
	2	DMC	452	Shell Gray-MD
	2	DMC	453	Shell Gray-LT
	2	DMC	535	Ash Gray-VY LT
	2	DMC	645	Beaver Gray-VY DK
	2	DMC	646	Beaver Gray-DK
	2	DMC	647	Beaver Gray-MD
	2	DMC	648	Beaver Gray-LT
	2	DMC	712	Cream
	2	DMC	844	Beaver Brown-UL DK
	2	DMC	934	Black Avocado Green
	2	DMC	3072	Beaver Gray-VY LT
	2	DMC	3799	Pewter Gray-VY DK
	2	DMC	3865	Winter White
	2	DMC	3866	Mocha Brown-UL VY LT