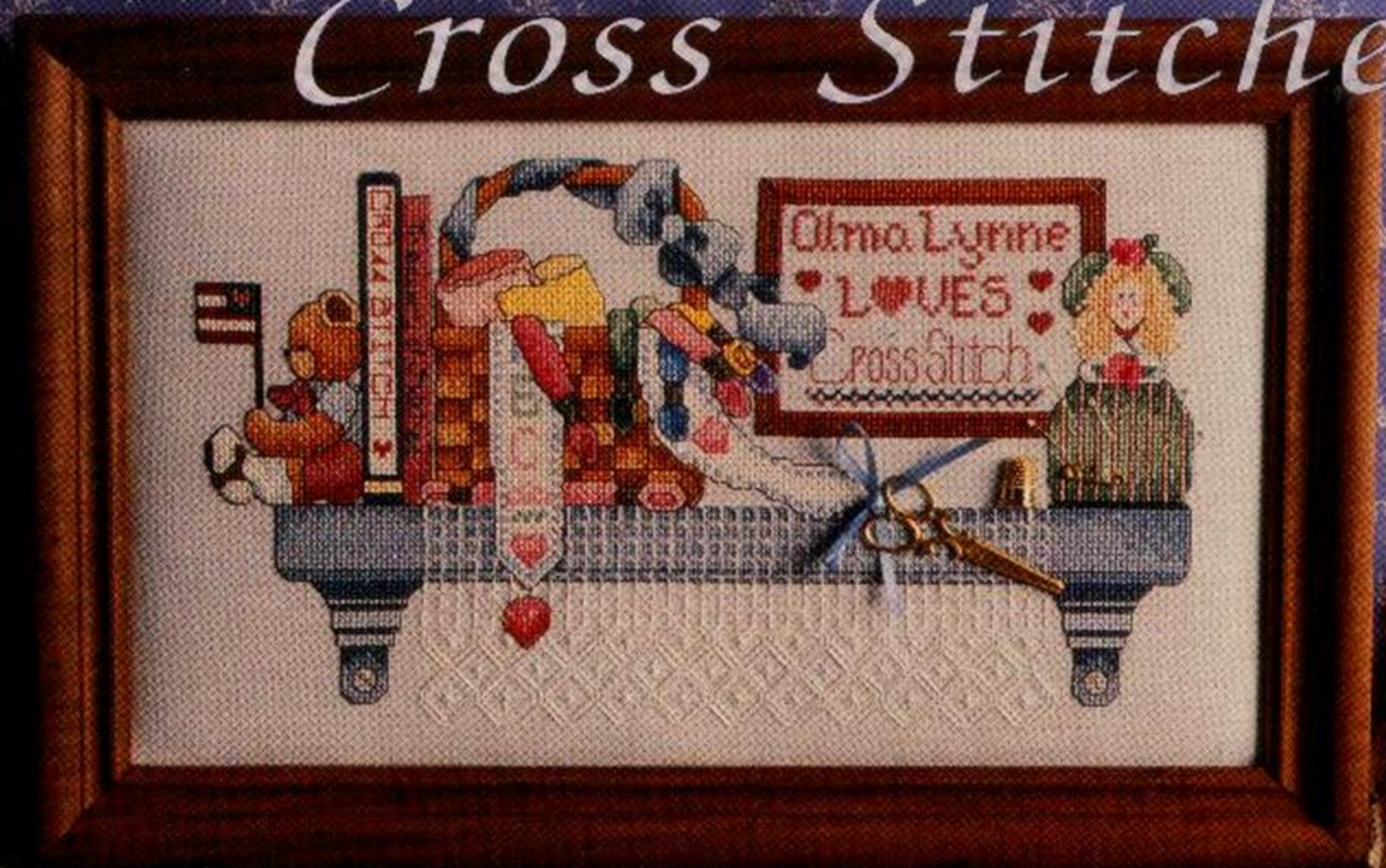
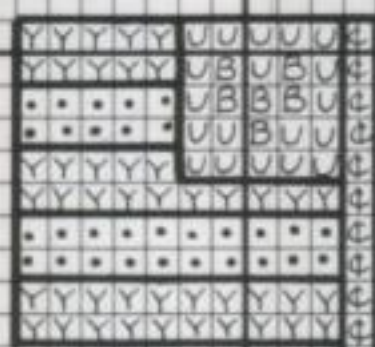


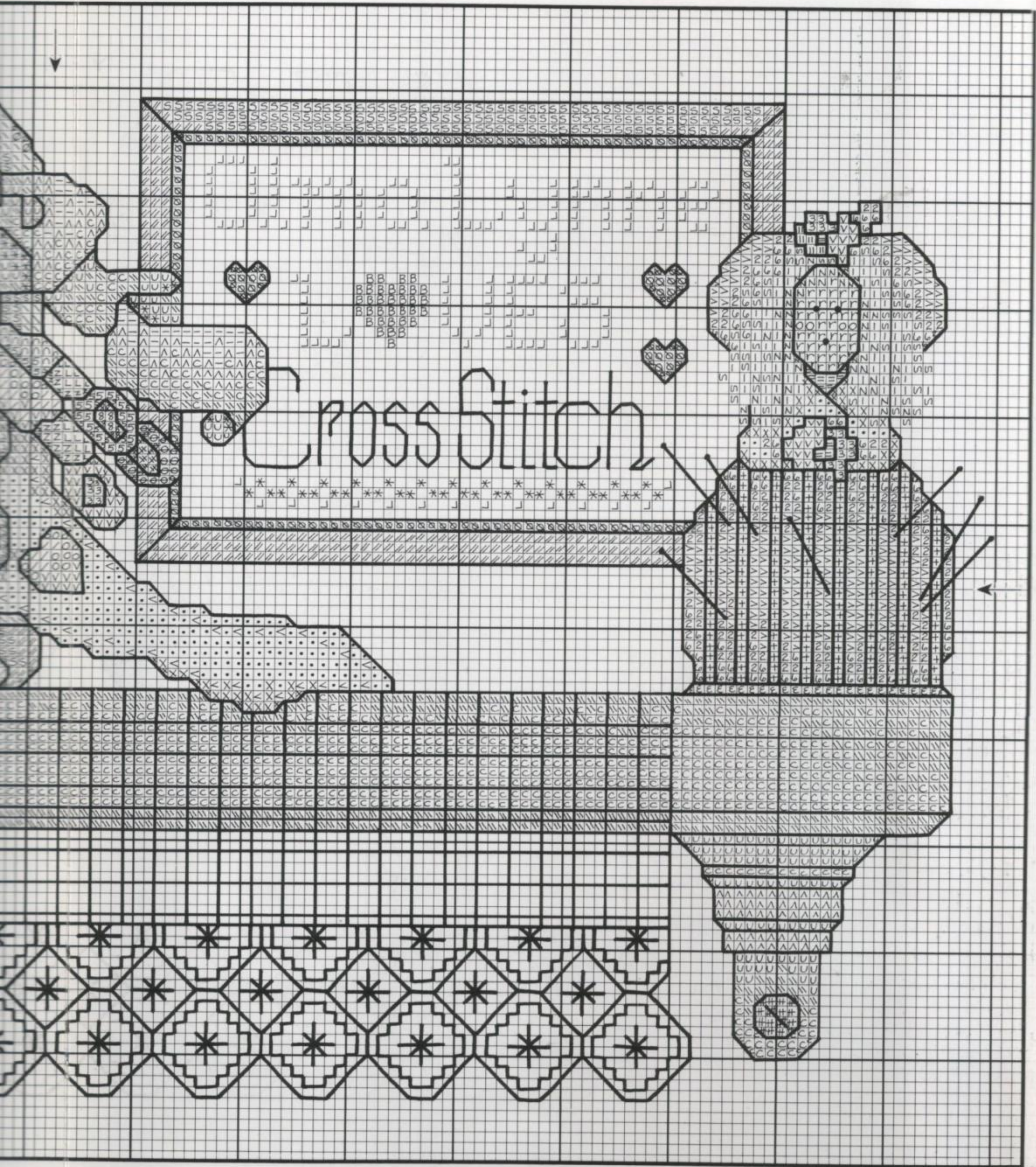
Alma Lynne
DESIGNS

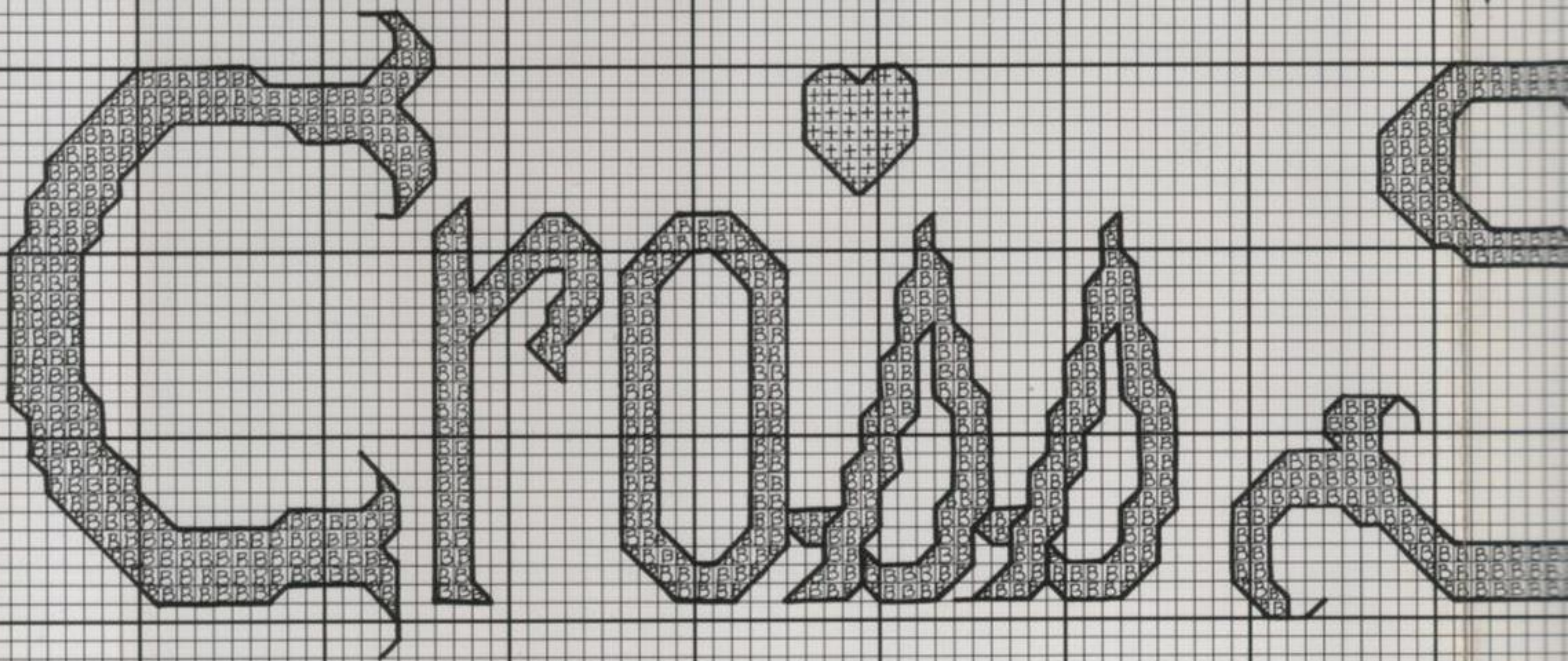
\$3.95
ALX-113

Cross Stitcher









Cross Stitcher

BACKSTITCH:

1. Bow - 3750
 2. Needles - Balger® HL Silver 001 (long, running stitches)
 3. Doll hat and dress - 500
 4. "Cross Stitch" in frame & "Cross Stitcher" - 221
 5. Lace scarf on shelf - 2 strands white
- NOTE: When backstitching lace, use 4 long, running stitches to complete each block. Also use long, running stitches for the snowflake pattern and the diagonal lines and connecting horizontal and vertical lines on the lace edging.
6. "Treasury of Stitches" - 311 (2 strands)
 7. "Cross Stitch" on book - 498 (2 strands)
 8. All else - 3371

FRENCH KNOTS & BEADS:

1. Bear's eye - 3371
2. Doll's eyes - 813
3. Doll's lips - 335
4. Sew a Pearl bead #02001 as indicated to tops of pins in pincushion.

CHARMS (optional):

Embellish with brass charms - scissors, thimble, etc., if desired, (see photo) from Sew Slow Collection - Birdhouse Ent., Patchogue, NY

DIMENSIONS FOR PICTURE

Fabric Count	Design Area	Cutting Dimensions
22	4 3/8" x 8"	10 3/8" x 14"
18	5 3/8" x 9 7/8"	11 3/8" x 15 7/8"
14	6 7/8" x 12 5/8"	12 7/8" x 18 5/8"
11	8 3/4" x 16 1/8"	14 3/4" x 22 1/8"

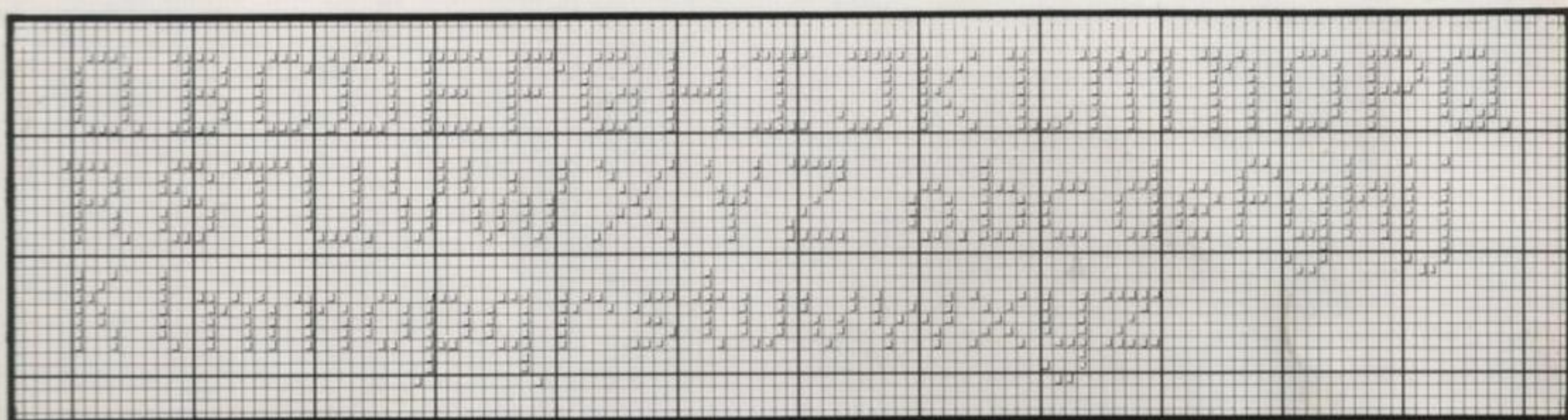
DIMENSIONS FOR SIGN

Fabric Count	Design Area	Cutting Dimensions
22	1 5/8" x 7 3/8"	7 5/8" x 13 3/8"
18	2" x 9"	8" x 15"
14	2 1/2" x 11 1/2"	8 1/2" x 17 1/2"
11	3 1/8" x 14 5/8"	9 1/8" x 20 5/8"


PLEASE SUPPORT YOUR RETAIL SHOPS

However, if you are unable to purchase our products locally or desire further information about our extensive line of cross stitch and duplicate stitching products - send \$2.00 to Alma Lynne Designs, 611 W. Broadway, Myrtle Beach, SC 29577.

NOTE: Reproductions of any designs contained herein, without prior approval, is prohibited under U.S. Copyright Law. All rights reserved.




MODEL INFORMATION

The *Cross Stitcher* picture was stitched over 2 threads on 28 ct. Periwinkle Pastel Linen from  **ZWEIFART®** (#3234).

The *Cross Stitcher* pillow was stitched over 2 threads on 28 ct. Natural Linen from Wichelt (#76-B)

CREDITS

Fabric -  **ZWEIFART®** - Somerset, NJ
 Metallics - Kreinik Mfg. Inc. - Parkersburg WV
 Mill Hill Beads - Gay Bowles Sales - Janesville, WI
 Framing - Howard Gallery, Myrtle Beach, SC
 Brass Charms - Birdhouse Ent. - Patchogue, NY
 Stitchers - Lisa Rabon & Patricia Thompson
Tavern Signs - Taylor's Workshop, 114 S. Joyland Ave.,
 Durham, NC 27703, (919) 596-5362.

Alma Lynne Designs, Inc.

611 W Broadway, Myrtle Beach, SC 29577

2nd Printing - March 1994



Cross Stitcher

	DMC JPCOATS		ANCHOR	
• White	1001	2	White	
Y 221	3243	897	Vy. Dk. Shell Pink	
B 223	3240	895	Med. Shell Pink	
+ 224	3239	893	Lt. Shell Pink	
H 309	3284	42	Deep Rose	
K 311	7980	148	Med. Navy Blue	
= 326	3401	59	Vy. Deep Rose	
X 333	----	119	Dk. Blue Violet	
3 335	3283	38	Rose	
⊕ 340	7110	118	Med. Blue Violet	
// 433	5471	358	Med. Brown	
S 434	5000	310	Lt. Brown	
\ 435	5371	1046	Vy. Lt. Brown	
Ø 436	5943	1045	Tan	
N 437	5942	362	Lt. Tan	
W 498	3000	1005	Dk. Christmas Red	
E 500	6880	683	Vy. Dk. Blue Green	
b 501	6878	878	Dk. Blue Green	
z 502	6876	877	Blue Green	
> 503	6879	876	Med. Blue Green	
4 504	6875	1042	Lt. Blue Green	
L 645	8500	273	Vy. Dk. Beaver Grey	
\$ 677	5372	886	Vy. Lt. Old Gold	
5 725	2294	305	Topaz	
∩ 726	2295	295	Lt. Topaz	
e 727	2289	293	Vy. Lt. Topaz	