



www.goldenkite.com

559 Going to Business



This pattern may not be copied, sold or in any other way handled in any way that violates the international copyright laws. If you get hold of this pattern (and or this document) in any other way than via a direct download from www.goldenkite.com or via a mail from us, you should report that to us at legal_actions@goldenkite.com .

Copyright ? 2003-, Golden Kite. All rights reserved.

Instructions

Thank you for choosing Golden Kite products!
We hope you will have lots of fun with this cross-stitch pattern!

Fabric

Press the fabric with an iron if needed. A good thing to prevent the fabric from fraying is to machine zigzag the edges.

It is easiest to start in the center of the design. To locate the center of the fabric, fold the fabric in half both vertically and horizontally. The center is located where these two folds meet.

Stitches

Each length of DMC thread consists of six strands.

Use two of these strands for all stitches.

Note that some colors may be mixes (or blends) between two different pure colors. In that case take one strand of the two colors each and thread the two strands into the needle at the same time for stitching.

All stitches are full cross-stitches. No half-stitching and no back-stitching is necessary in this pattern.

All cross-stitches will be worked into the holes in the fabric from left to right. Always use the larger holes in the fabric for the stitches. Adjacent stitches should meet in the same hole. Make sure all stitches cross in the same direction.

Please be careful when washing the finished embroidery! The cotton thread may bleed when washed. Only hand wash it in lukewarm water. Remove excess water by roll it in a towel and lay it flat to air dry. Natural fabrics may shrink slightly when washed. We do not recommend washing the embroidery if not absolutely necessary and we take no responsibility for any damage that may occur.

When you start using this product you agree that Golden Kite (Golden K), or any people working for or in association with Golden Kite (Golden K), cannot be set responsible for any physical, mental, economical or other type of damage caused by this product (including this document, pattern, threads, needles and any other parts received by you from Golden Kite (Golden K)).

This pattern may not be copied, sold or in any other way handled in any way that violates the international copyright laws. If you get hold of this pattern (and or this document) in any other way than via a direct download from www.goldenkite.com or via a mail from us, you should report that to us at legal_actions@goldenkite.com .

Going to Business

Stitch Count	
Horizontal:	200
Vertical:	483

Recommended Fabric Color
Antique White

This table tells the size of the pattern (without any margins) and the size of the fabric required to stitch the pattern (including recommended margins). 3 inch margins have been added on each side in the 'Including Margins' row.

The sizes are given for 14, 16 and 18 stitches per inch fabrics.

Make sure to use the 'Including Margins' row when cutting the piece of fabric to be used. Also make sure that 3 inch margins are enough for your stitching technique and add more margin areas if necessary.

	14				16				18			
	Width		Height		Width		Height		Width		Height	
	cm	inch	cm	inch	cm	inch	cm	inch	cm	inch	cm	inch
Pattern:	36	14.14	88	34.39	32	12.37	77	30.09	28	11	68	26.75
Including Margins:	52	21	104	41	48	19	93	37	44	18	84	33
	10				12				24			
	Width		Height		Width		Height		Width		Height	
	cm	inch	cm	inch	cm	inch	cm	inch	cm	inch	cm	inch
Pattern:	50	19.79	123	48.14	42	16.49	102	40.12	21	8.24	51	20.06
Including Margins:	66	26	139	55	58	23	118	47	37	15	67	27
	25				26				27			
	Width		Height		Width		Height		Width		Height	
	cm	inch	cm	inch	cm	inch	cm	inch	cm	inch	cm	inch
Pattern:	20	7.91	49	19.25	19	7.61	47	18.51	18	7.33	45	17.83
Including Margins:	36	14	65	26	35	14	63	25	34	14	61	24
	28				30				32			
	Width		Height		Width		Height		Width		Height	
	cm	inch	cm	inch	cm	inch	cm	inch	cm	inch	cm	inch
Pattern:	18	7.07	44	17.19	16	6.59	41	16.04	15	6.18	38	15.04
Including Margins:	34	14	60	24	32	13	57	23	31	13	54	22

Solid Color Stitches. Use two strands of the specified color for these stitches.		
Symbol	DMC	Name
■	310	Black
★	422	Hazelnut Brown-LT
☉	435	Brown-VY LT
⊕	436	Tan
*	437	Tan-LT
●	500	Blue Green-VY DK
✕	503	Blue Green-MD
↑	524	Fern Green-VY LT
↔	543	Beige Brown-UL VY LT
*	611	Drab Brown
⊕	612	Drab Brown-LT
#	613	Drab Brown-VY LT
⬆	632	Desert Sand-UL VY DK
■	640	Beige Gray-VY DK
♦	642	Beige Gray-DK
☛	644	Beige Gray-MD
☛	645	Beaver Gray-VY DK
☛	646	Beaver Gray-DK
☛	647	Beaver Gray-MD
☛	676	Old Gold-LT
e	712	Cream
↑	727	Topaz-VY LT
↗	738	Tan-VY LT
z	739	Tan-UL VY LT
:	746	Off White
☛	801	Coffee Brown-DK
∇	822	Beige Gray-LT
✱	830	Golden Olive-DK
✱	834	Golden Olive-VY LT

☛	841	Beige Brown-LT
➔	844	Beaver Brown-UL DK
☛	869	Hazelnut Brown-VY DK
●	934	Black Avocado Green
✕	935	Avocado Green-DK
●	938	Coffee Brown-UL DK
☉	3021	Brown Gray-VY DK
☉	3022	Brown Gray-MD
↔	3023	Brown Gray-LT
↓	3024	Brown Gray-VY LT
☛	3031	Mocha Brown-VY DK
☛	3032	Mocha Brown-MD
☛	3045	Yellow Beige-DK
↔	3047	Yellow Beige-LT
☛	3051	Green Gray-DK
☛	3362	Pine Green-DK
♠	3363	Pine Green-MD
■	3371	Black Brown
>	3770	Tawny-VY LT
☛	3772	Desert Sand-VY DK
♣	3781	Mocha Brown-DK
☛	3787	Brown Gray-DK
☛	3790	Beige Gray-UL DK
☛	3799	Pewter Gray-VY DK
☛	3822	Straw-LT
+	3823	Yellow-UL Pale
✱	3828	Hazelnut Brown
☛	3855	Autumn Gold-LT
♦	3863	Mocha Beige-MD
\$	3864	Mocha Beige-LT
•	3865	Winter White
‡	Ecrú	Ecrú

Blend Stitches. Use one strand of each of DMC1 and DMC2 for these stitches.

Symbol	DMC1	Name1	DMC2	Name2
▲	3790	Beige Gray-UL DK	3787	Brown Gray-DK
▼	3862	Mocha Beige-DK	632	Desert Sand-UL VY DK
♥	934	Black Avocado Green	935	Avocado Green-DK
☼	3021	Brown Gray-VY DK	935	Avocado Green-DK
↑	433	Brown-MD	300	Mahogany-VY DK
●	934	Black Avocado Green	3371	Black Brown
+	782	Topaz-DK	780	Topaz-UL VY DK
◆	3031	Mocha Brown-VY DK	3021	Brown Gray-VY DK
⊞	640	Beige Gray-VY DK	3790	Beige Gray-UL DK
卅	3863	Mocha Beige-MD	3032	Mocha Brown-MD
←	3021	Brown Gray-VY DK	3051	Green Gray-DK
↓	3787	Brown Gray-DK	844	Beaver Brown-UL DK
↘	3022	Brown Gray-MD	3787	Brown Gray-DK
✚	640	Beige Gray-VY DK	3787	Brown Gray-DK
↓	935	Avocado Green-DK	3031	Mocha Brown-VY DK
Ⓢ	934	Black Avocado Green	310	Black
⌵	632	Desert Sand-UL VY DK	3781	Mocha Brown-DK
◇	632	Desert Sand-UL VY DK	436	Tan
☾	301	Mahogany-MD	3772	Desert Sand-VY DK
*	301	Mahogany-MD	632	Desert Sand-UL VY DK
⊕	3781	Mocha Brown-DK	3790	Beige Gray-UL DK
☼	934	Black Avocado Green	938	Coffee Brown-UL DK

This table specifies how much thread of each color is required to stitch this pattern. It is good to know that one complete DMC skein contains 313 inches (795 cm) thread.

DMC	Name	Usage (cm)	Usage (inch)	Usage (cm)	Usage (inch)	Usage (cm)	Usage (inch)
		14		16		18	
300	Mahogany-VY DK	106	41	101	39	91	35
301	Mahogany-MD	4	1	4	1	3	1
310	Black	2072	815	1973	776	1776	699
422	Hazelnut Brown-LT	48	18	46	18	41	16
433	Brown-MD	106	41	101	39	91	35
435	Brown-VY LT	3	1	3	1	3	1
436	Tan	11	4	10	3	9	3
437	Tan-LT	29	11	27	10	24	9
500	Blue Green-VY DK	38	14	36	14	32	12
503	Blue Green-MD	1	1	1	1	1	1
524	Fern Green-VY LT	136	53	129	50	116	45
543	Beige Brown-UL VY LT	43	16	41	16	37	14
611	Drab Brown	276	108	262	103	236	92
612	Drab Brown-LT	364	143	346	136	312	122
613	Drab Brown-VY LT	164	64	156	61	140	55
632	Desert Sand-UL VY DK	81	31	77	30	69	27
640	Beige Gray-VY DK	1374	540	1309	515	1178	463
642	Beige Gray-DK	249	98	237	93	213	83
644	Beige Gray-MD	110	43	105	41	94	37
645	Beaver Gray-VY DK	109	42	104	40	93	36
646	Beaver Gray-DK	114	44	109	42	98	38
647	Beaver Gray-MD	117	46	111	43	100	39
676	Old Gold-LT	2	1	2	1	2	1
712	Cream	1	1	1	1	1	1
727	Topaz-VY LT	1	1	1	1	1	1
738	Tan-VY LT	163	64	156	61	140	55
739	Tan-UL VY LT	133	52	126	49	114	44
746	Off White	61	24	58	22	52	20
780	Topaz-UL VY DK	8	3	8	3	7	2
782	Topaz-DK	8	3	8	3	7	2
801	Coffee Brown-DK	9	3	8	3	7	2
822	Beige Gray-LT	36	14	34	13	30	11
830	Golden Olive-DK	9	3	9	3	8	3
834	Golden Olive-VY LT	2	1	2	1	1	1
841	Beige Brown-LT	146	57	139	54	125	49
844	Beaver Brown-UL DK	1460	574	1390	547	1251	492
869	Hazelnut Brown-VY DK	1	1	1	1	1	1
934	Black Avocado Green	2623	1032	2499	983	2249	885
935	Avocado Green-DK	2262	890	2154	848	1938	762
938	Coffee Brown-UL DK	696	274	663	261	597	235
3021	Brown Gray-VY DK	3403	1339	3241	1275	2917	1148
3022	Brown Gray-MD	398	156	379	149	341	134
3023	Brown Gray-LT	145	57	138	54	124	48
3024	Brown Gray-VY LT	11	4	11	4	10	3
3031	Mocha Brown-VY DK	1286	506	1225	482	1102	433
3032	Mocha Brown-MD	707	278	674	265	606	238
3045	Yellow Beige-DK	24	9	23	9	21	8
3047	Yellow Beige-LT	51	20	48	18	44	17
3051	Green Gray-DK	1184	466	1128	444	1015	399
3362	Pine Green-DK	99	38	95	37	85	33
3363	Pine Green-MD	2	1	2	1	2	1
3371	Black Brown	640	251	610	240	549	216
3770	Tawny-VY LT	14	5	13	5	12	4

3772	Desert Sand-VY DK	9	3	9	3	8	3
3781	Mocha Brown-DK	768	302	731	287	658	259
3787	Brown Gray-DK	2138	841	2036	801	1833	721
3790	Beige Gray-UL DK	1462	575	1392	548	1253	493
3799	Pewter Gray-VY DK	469	184	447	175	402	158
3822	Straw-LT	0	1	0	1	0	1
3823	Yellow-UL Pale	36	14	35	13	31	12
3828	Hazelnut Brown	24	9	23	9	20	7
3855	Autumn Gold-LT	5	1	5	1	4	1
3862	Mocha Beige-DK	41	16	39	15	35	13
3863	Mocha Beige-MD	669	263	637	250	573	225
3864	Mocha Beige-LT	440	173	419	164	377	148
3865	Winter White	10	3	10	3	9	3
Ecrú	Ecrú	18	7	17	6	15	5

Extended thread usage table.							
DMC	Name	Usage (cm)	Usage (inch)	Usage (cm)	Usage (inch)	Usage (cm)	Usage (inch)
		10		12		24	
300	Mahogany-VY DK	164	63	137	53	68	26
301	Mahogany-MD	5	2	5	2	2	1
310	Black	3197	1258	2664	1049	1332	524
422	Hazelnut Brown-LT	74	29	62	24	31	12
433	Brown-MD	164	63	137	53	68	26
435	Brown-VY LT	5	2	5	2	2	1
436	Tan	16	5	14	5	7	2
437	Tan-LT	43	16	36	14	18	7
500	Blue Green-VY DK	58	22	48	18	24	9
503	Blue Green-MD	2	2	2	2	1	1
524	Fern Green-VY LT	209	81	174	68	87	34
543	Beige Brown-UL VY LT	67	25	56	21	28	11
611	Drab Brown	425	166	354	138	177	69
612	Drab Brown-LT	562	220	468	183	234	92
613	Drab Brown-VY LT	252	99	210	83	105	41
632	Desert Sand-UL VY DK	124	49	104	41	52	20
640	Beige Gray-VY DK	2120	833	1767	695	884	347
642	Beige Gray-DK	383	149	320	125	160	62
644	Beige Gray-MD	169	67	141	56	71	28
645	Beaver Gray-VY DK	167	65	140	54	70	27
646	Beaver Gray-DK	176	68	147	57	74	29
647	Beaver Gray-MD	180	70	150	59	75	29
676	Old Gold-LT	4	2	3	2	2	1
712	Cream	2	2	2	2	1	1
727	Topaz-VY LT	2	2	2	2	1	1
738	Tan-VY LT	252	99	210	83	105	41
739	Tan-UL VY LT	205	79	171	66	86	33
746	Off White	94	36	78	30	39	15
780	Topaz-UL VY DK	13	4	11	3	5	2
782	Topaz-DK	13	4	11	3	5	2
801	Coffee Brown-DK	13	4	11	3	5	2
822	Beige Gray-LT	54	20	45	17	23	8
830	Golden Olive-DK	14	5	12	5	6	2
834	Golden Olive-VY LT	2	2	2	2	1	1
841	Beige Brown-LT	225	88	188	74	94	37
844	Beaver Brown-UL DK	2252	886	1877	738	938	369
869	Hazelnut Brown-VY DK	2	2	2	2	1	1
934	Black Avocado Green	4048	1593	3374	1328	1687	664

935	Avocado Green-DK	3488	1372	2907	1143	1454	572
938	Coffee Brown-UL DK	1075	423	896	353	448	176
3021	Brown Gray-VY DK	5251	2066	4376	1722	2188	861
3022	Brown Gray-MD	614	241	512	201	256	101
3023	Brown Gray-LT	223	86	186	72	93	36
3024	Brown Gray-VY LT	18	5	15	5	8	2
3031	Mocha Brown-VY DK	1984	779	1653	650	827	325
3032	Mocha Brown-MD	1091	428	909	357	455	179
3045	Yellow Beige-DK	38	14	32	12	16	6
3047	Yellow Beige-LT	79	31	66	26	33	13
3051	Green Gray-DK	1827	718	1523	599	761	299
3362	Pine Green-DK	153	59	128	50	64	25
3363	Pine Green-MD	4	2	3	2	2	1
3371	Black Brown	988	389	824	324	412	162
3770	Tawny-VY LT	22	7	18	6	9	3
3772	Desert Sand-VY DK	14	5	12	5	6	2
3781	Mocha Brown-DK	1184	466	987	389	494	194
3787	Brown Gray-DK	3299	1298	2750	1082	1375	541
3790	Beige Gray-UL DK	2255	887	1880	740	940	370
3799	Pewter Gray-VY DK	724	284	603	237	302	119
3822	Straw-LT	0	2	0	2	0	1
3823	Yellow-UL Pale	56	22	47	18	23	9
3828	Hazelnut Brown	36	13	30	11	15	5
3855	Autumn Gold-LT	7	2	6	2	3	1
3862	Mocha Beige-DK	63	23	53	20	26	10
3863	Mocha Beige-MD	1031	405	860	338	430	169
3864	Mocha Beige-LT	679	266	566	222	283	111
3865	Winter White	16	5	14	5	7	2
Ecru	Ecru	27	9	23	8	11	4

Extended thread usage table.							
DMC	Name	Usage (cm)	Usage (inch)	Usage (cm)	Usage (inch)	Usage (cm)	Usage (inch)
		25		26		27	
300	Mahogany-VY DK	66	25	63	24	61	23
301	Mahogany-MD	2	1	2	1	2	1
310	Black	1279	503	1230	484	1184	466
422	Hazelnut Brown-LT	30	12	28	11	27	11
433	Brown-MD	66	25	63	24	61	23
435	Brown-VY LT	2	1	2	1	2	1
436	Tan	6	2	6	2	6	2
437	Tan-LT	17	6	17	6	16	6
500	Blue Green-VY DK	23	9	22	8	21	8
503	Blue Green-MD	1	1	1	1	1	1
524	Fern Green-VY LT	84	32	80	31	77	30
543	Beige Brown-UL VY LT	27	10	26	10	25	9
611	Drab Brown	170	66	163	64	157	61
612	Drab Brown-LT	225	88	216	84	208	81
613	Drab Brown-VY LT	101	40	97	38	93	37
632	Desert Sand-UL VY DK	50	19	48	19	46	18
640	Beige Gray-VY DK	848	333	816	321	785	309
642	Beige Gray-DK	153	60	147	57	142	55
644	Beige Gray-MD	68	27	65	26	63	25
645	Beaver Gray-VY DK	67	26	64	25	62	24
646	Beaver Gray-DK	71	27	68	26	65	25
647	Beaver Gray-MD	72	28	69	27	67	26
676	Old Gold-LT	1	1	1	1	1	1

712	Cream	1	1	1	1	1	1
727	Topaz-VY LT	1	1	1	1	1	1
738	Tan-VY LT	101	40	97	38	93	37
739	Tan-UL VY LT	82	32	79	30	76	29
746	Off White	37	14	36	14	35	13
780	Topaz-UL VY DK	5	1	5	1	5	1
782	Topaz-DK	5	1	5	1	5	1
801	Coffee Brown-DK	5	1	5	1	5	1
822	Beige Gray-LT	22	8	21	8	20	7
830	Golden Olive-DK	6	2	6	2	5	2
834	Golden Olive-VY LT	1	1	1	1	1	1
841	Beige Brown-LT	90	35	87	34	83	33
844	Beaver Brown-UL DK	901	354	866	341	834	328
869	Hazelnut Brown-VY DK	1	1	1	1	1	1
934	Black Avocado Green	1619	637	1557	613	1499	590
935	Avocado Green-DK	1395	549	1342	528	1292	508
938	Coffee Brown-UL DK	430	169	413	163	398	157
3021	Brown Gray-VY DK	2100	827	2019	795	1945	765
3022	Brown Gray-MD	246	96	236	93	227	89
3023	Brown Gray-LT	89	35	86	33	83	32
3024	Brown Gray-VY LT	7	2	7	2	7	2
3031	Mocha Brown-VY DK	793	312	763	300	735	289
3032	Mocha Brown-MD	436	171	420	165	404	159
3045	Yellow Beige-DK	15	6	15	6	14	5
3047	Yellow Beige-LT	32	12	30	12	29	11
3051	Green Gray-DK	731	287	703	276	677	266
3362	Pine Green-DK	61	24	59	23	57	22
3363	Pine Green-MD	1	1	1	1	1	1
3371	Black Brown	395	156	380	150	366	144
3770	Tawny-VY LT	9	3	8	3	8	3
3772	Desert Sand-VY DK	6	2	6	2	5	2
3781	Mocha Brown-DK	474	186	456	179	439	173
3787	Brown Gray-DK	1320	519	1269	499	1222	481
3790	Beige Gray-UL DK	902	355	867	341	835	329
3799	Pewter Gray-VY DK	289	114	278	109	268	105
3822	Straw-LT	0	1	0	1	0	1
3823	Yellow-UL Pale	22	9	21	8	21	8
3828	Hazelnut Brown	14	5	14	5	13	5
3855	Autumn Gold-LT	3	1	3	1	3	1
3862	Mocha Beige-DK	25	9	24	9	23	9
3863	Mocha Beige-MD	413	162	397	156	382	150
3864	Mocha Beige-LT	271	107	261	102	251	99
3865	Winter White	6	2	6	2	6	2
Ecu	Ecu	11	4	10	3	10	3

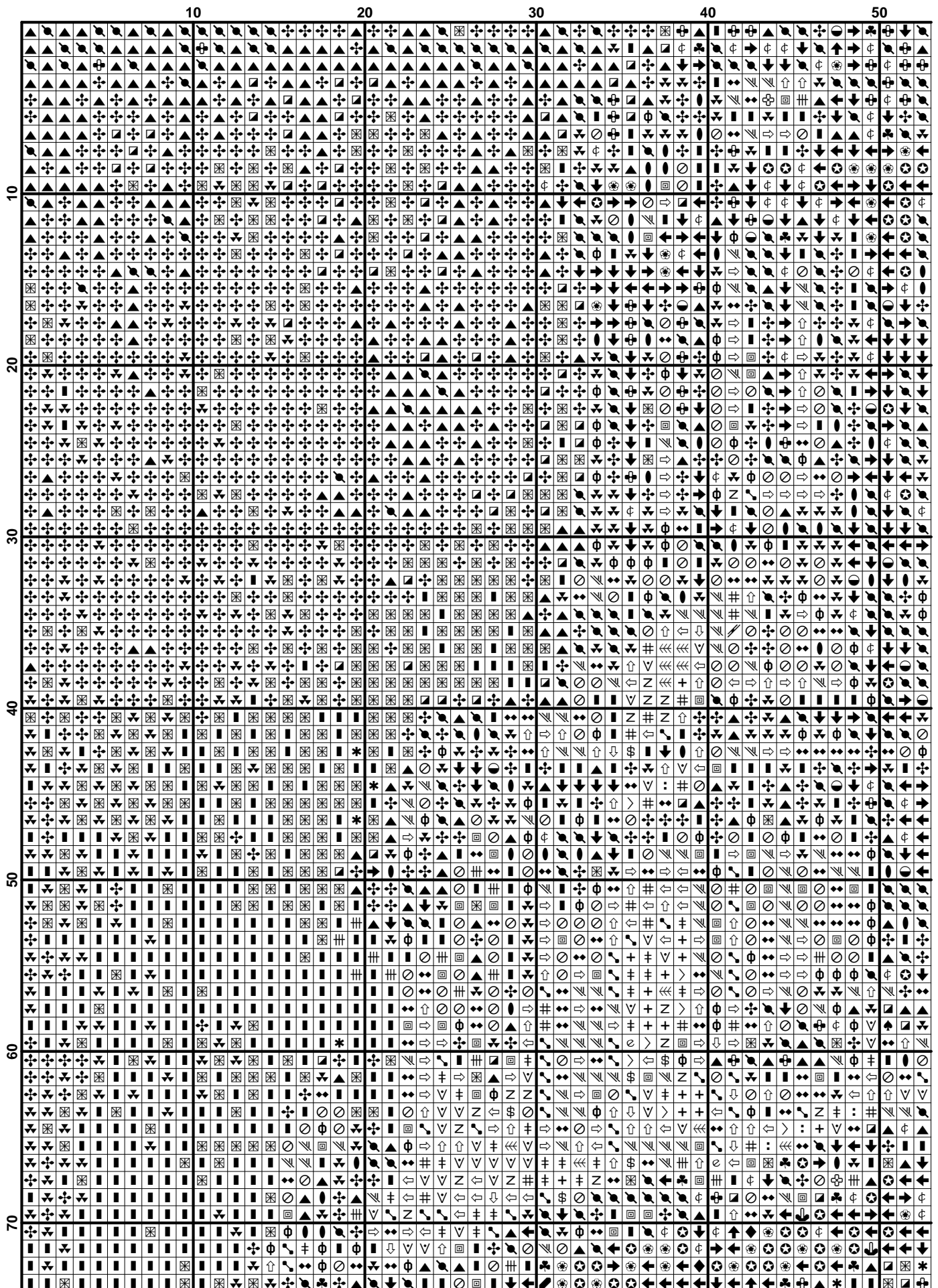
Extended thread usage table.							
DMC	Name	Usage (cm)	Usage (inch)	Usage (cm)	Usage (inch)	Usage (cm)	Usage (inch)
		28		30		32	
300	Mahogany-VY DK	59	23	55	21	51	20
301	Mahogany-MD	2	1	2	1	2	1
310	Black	1142	449	1066	419	999	393
422	Hazelnut Brown-LT	26	10	25	10	23	9
433	Brown-MD	59	23	55	21	51	20
435	Brown-VY LT	2	1	2	1	2	1
436	Tan	6	2	5	2	5	2
437	Tan-LT	15	6	14	5	14	5
500	Blue Green-VY DK	21	8	19	7	18	7

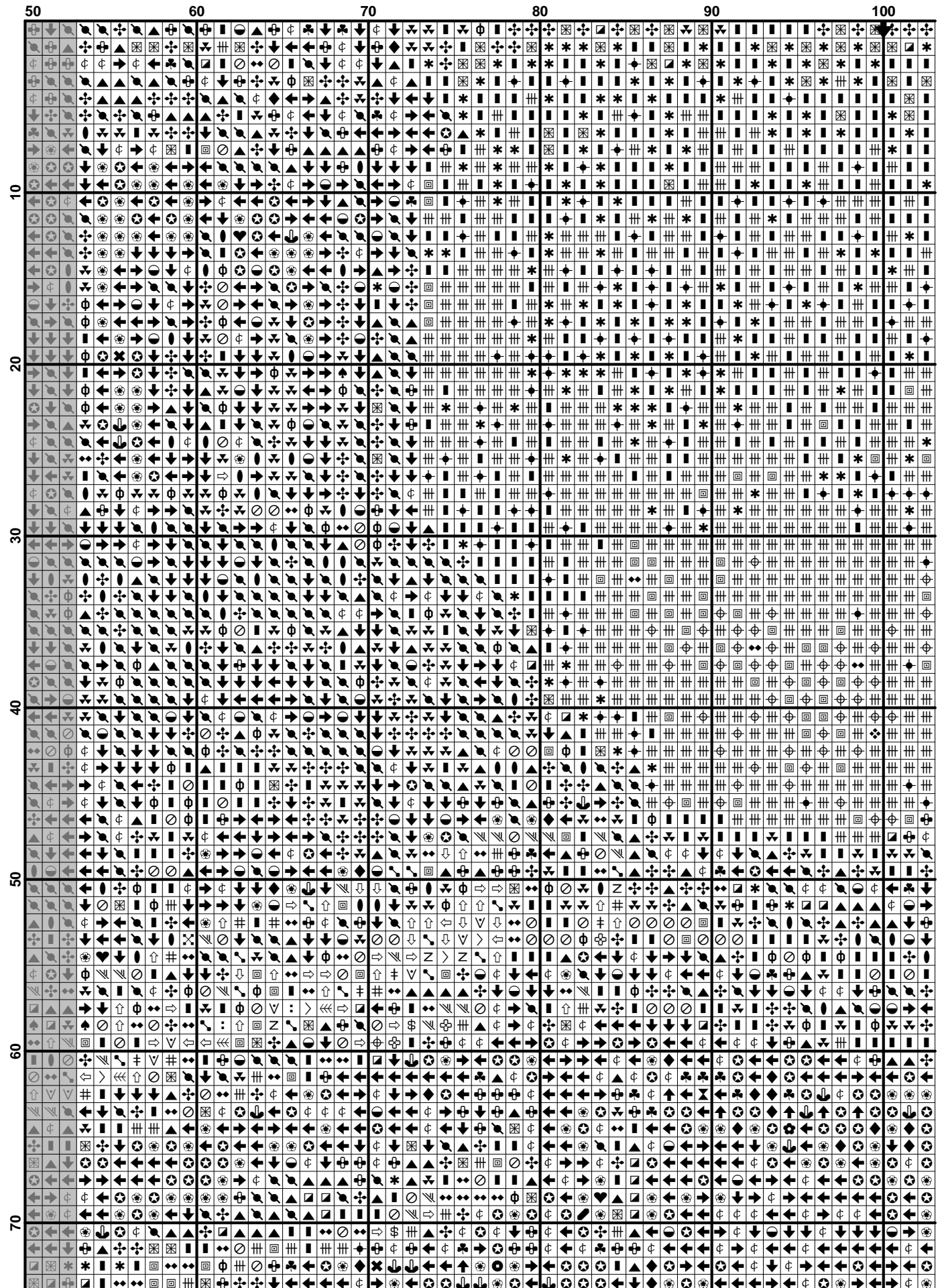
Copyright ? 2003-, Golden Kite (Golden K.)

Internet: www.goldenkite.com

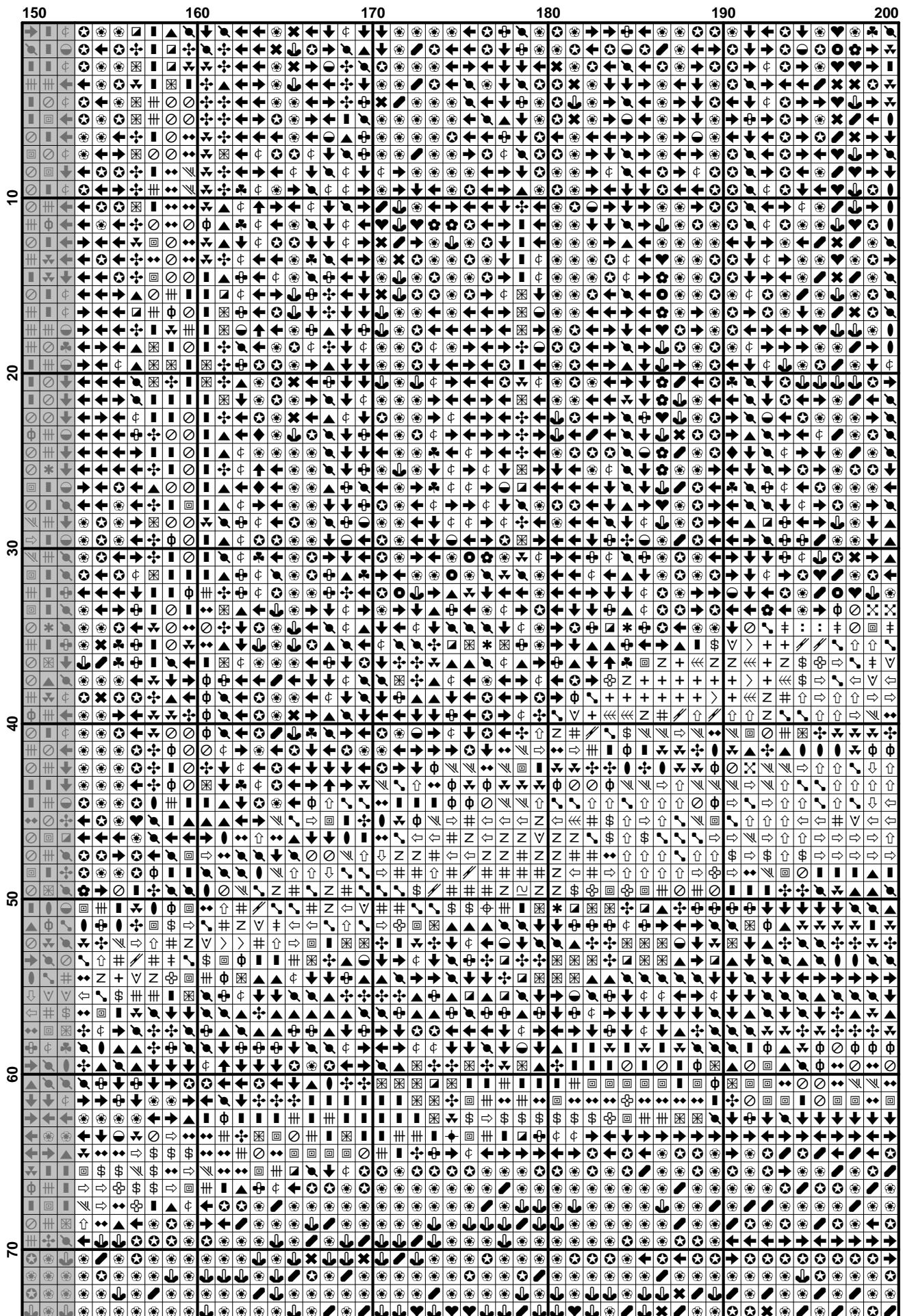
e-mail: info@goldenkite.com

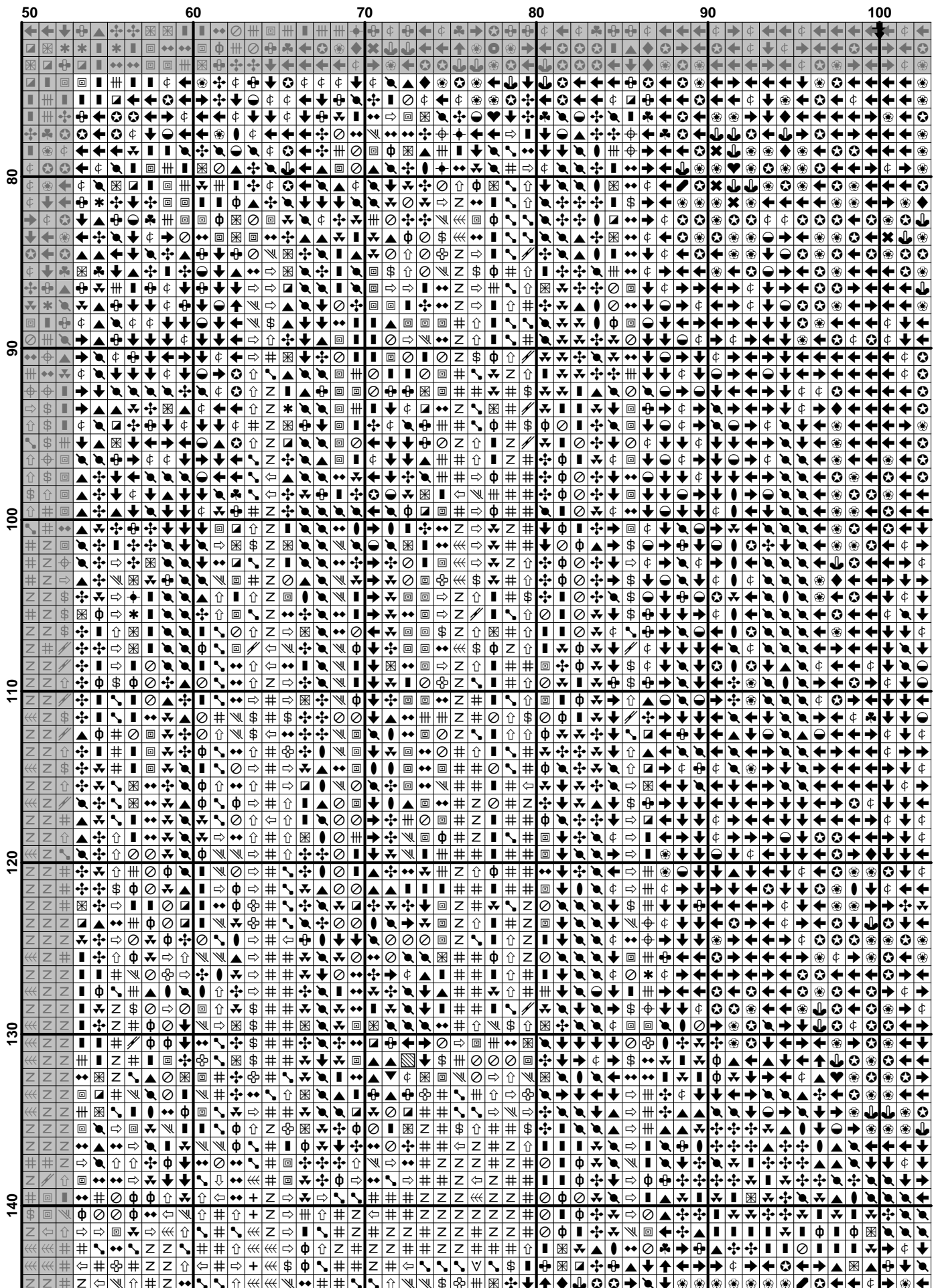
503	Blue Green-MD	1	1	1	1	1	1
524	Fern Green-VY LT	75	29	70	27	65	25
543	Beige Brown-UL VY LT	24	9	22	8	21	8
611	Drab Brown	152	59	142	55	133	52
612	Drab Brown-LT	201	78	187	73	176	69
613	Drab Brown-VY LT	90	35	84	33	79	31
632	Desert Sand-UL VY DK	44	17	41	16	39	15
640	Beige Gray-VY DK	757	298	707	278	663	260
642	Beige Gray-DK	137	53	128	50	120	47
644	Beige Gray-MD	60	24	56	22	53	21
645	Beaver Gray-VY DK	60	23	56	22	52	20
646	Beaver Gray-DK	63	24	59	23	55	21
647	Beaver Gray-MD	64	25	60	23	56	22
676	Old Gold-LT	1	1	1	1	1	1
712	Cream	1	1	1	1	1	1
727	Topaz-VY LT	1	1	1	1	1	1
738	Tan-VY LT	90	35	84	33	79	31
739	Tan-UL VY LT	73	28	68	26	64	25
746	Off White	33	13	31	12	29	11
780	Topaz-UL VY DK	5	1	4	1	4	1
782	Topaz-DK	5	1	4	1	4	1
801	Coffee Brown-DK	5	1	4	1	4	1
822	Beige Gray-LT	19	7	18	7	17	6
830	Golden Olive-DK	5	2	5	2	5	2
834	Golden Olive-VY LT	1	1	1	1	1	1
841	Beige Brown-LT	80	32	75	29	70	28
844	Beaver Brown-UL DK	804	316	751	295	704	277
869	Hazelnut Brown-VY DK	1	1	1	1	1	1
934	Black Avocado Green	1446	569	1349	531	1265	498
935	Avocado Green-DK	1246	490	1163	457	1090	429
938	Coffee Brown-UL DK	384	151	358	141	336	132
3021	Brown Gray-VY DK	1875	738	1750	689	1641	646
3022	Brown Gray-MD	219	86	205	80	192	75
3023	Brown Gray-LT	80	31	74	29	70	27
3024	Brown Gray-VY LT	6	2	6	2	6	2
3031	Mocha Brown-VY DK	708	278	661	260	620	244
3032	Mocha Brown-MD	390	153	364	143	341	134
3045	Yellow Beige-DK	14	5	13	5	12	5
3047	Yellow Beige-LT	28	11	26	10	25	10
3051	Green Gray-DK	653	257	609	239	571	224
3362	Pine Green-DK	55	21	51	20	48	19
3363	Pine Green-MD	1	1	1	1	1	1
3371	Black Brown	353	139	329	130	309	122
3770	Tawny-VY LT	8	3	7	2	7	2
3772	Desert Sand-VY DK	5	2	5	2	5	2
3781	Mocha Brown-DK	423	167	395	155	370	146
3787	Brown Gray-DK	1178	464	1100	433	1031	406
3790	Beige Gray-UL DK	806	317	752	296	705	277
3799	Pewter Gray-VY DK	258	102	241	95	226	89
3822	Straw-LT	0	1	0	1	0	1
3823	Yellow-UL Pale	20	8	19	7	17	7
3828	Hazelnut Brown	13	5	12	4	11	4
3855	Autumn Gold-LT	3	1	2	1	2	1
3862	Mocha Beige-DK	23	8	21	8	20	7
3863	Mocha Beige-MD	368	145	344	135	322	127
3864	Mocha Beige-LT	242	95	226	89	212	83
3865	Winter White	6	2	5	2	5	2
Ecru	Ecru	10	3	9	3	8	3

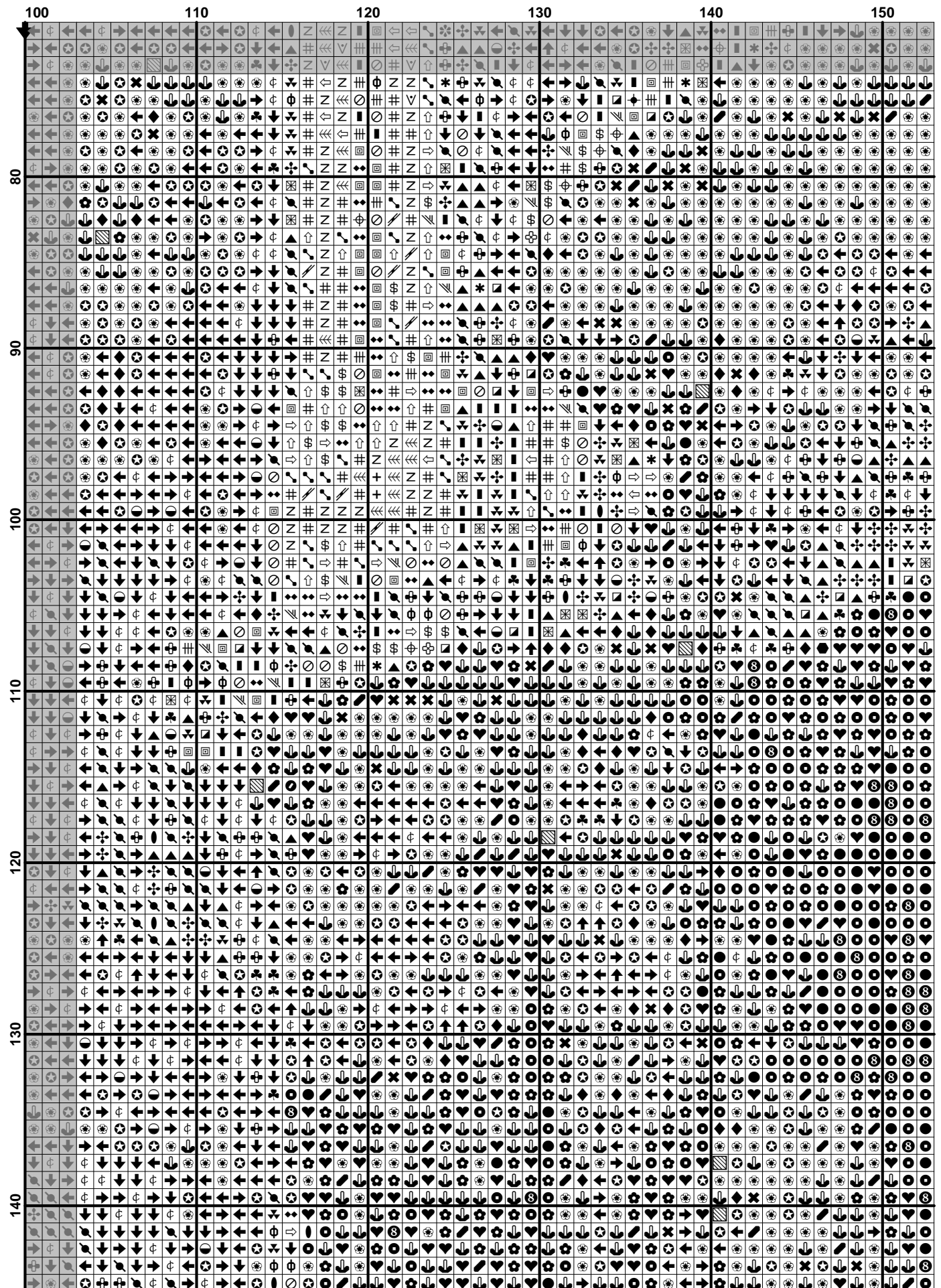


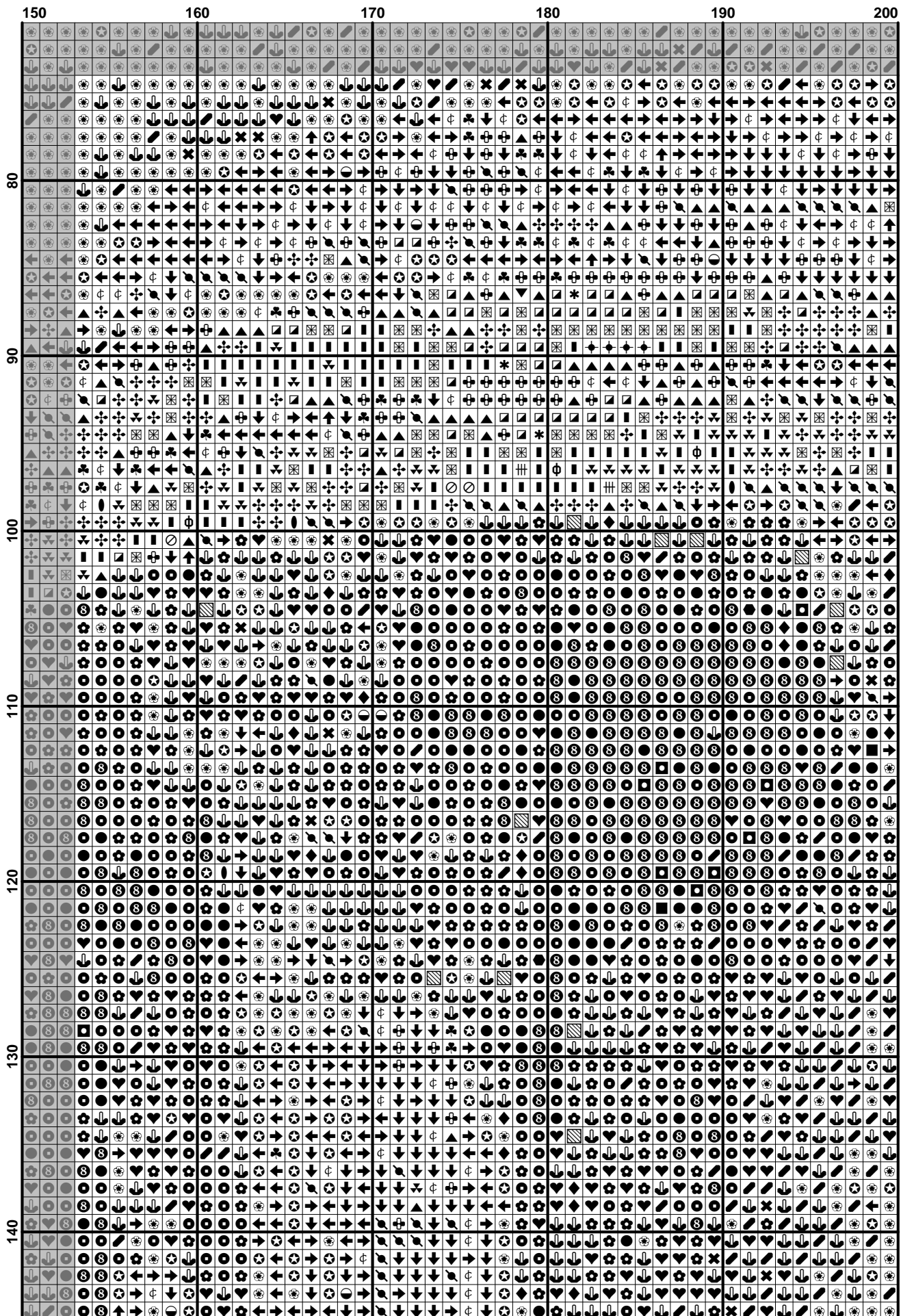


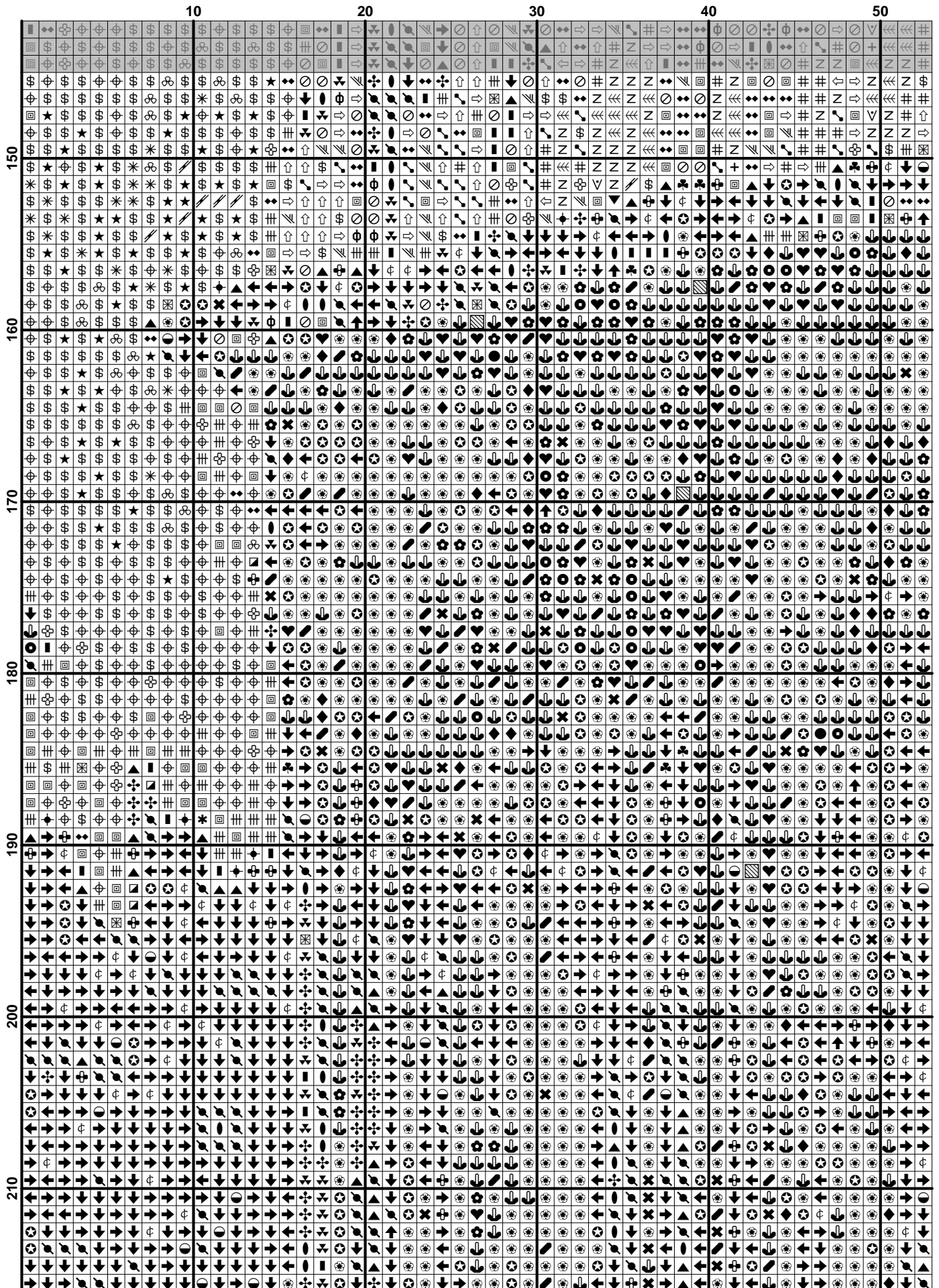
	100	110	120	130	140	150
10						
20						
30						
40						
50						
60						
70						

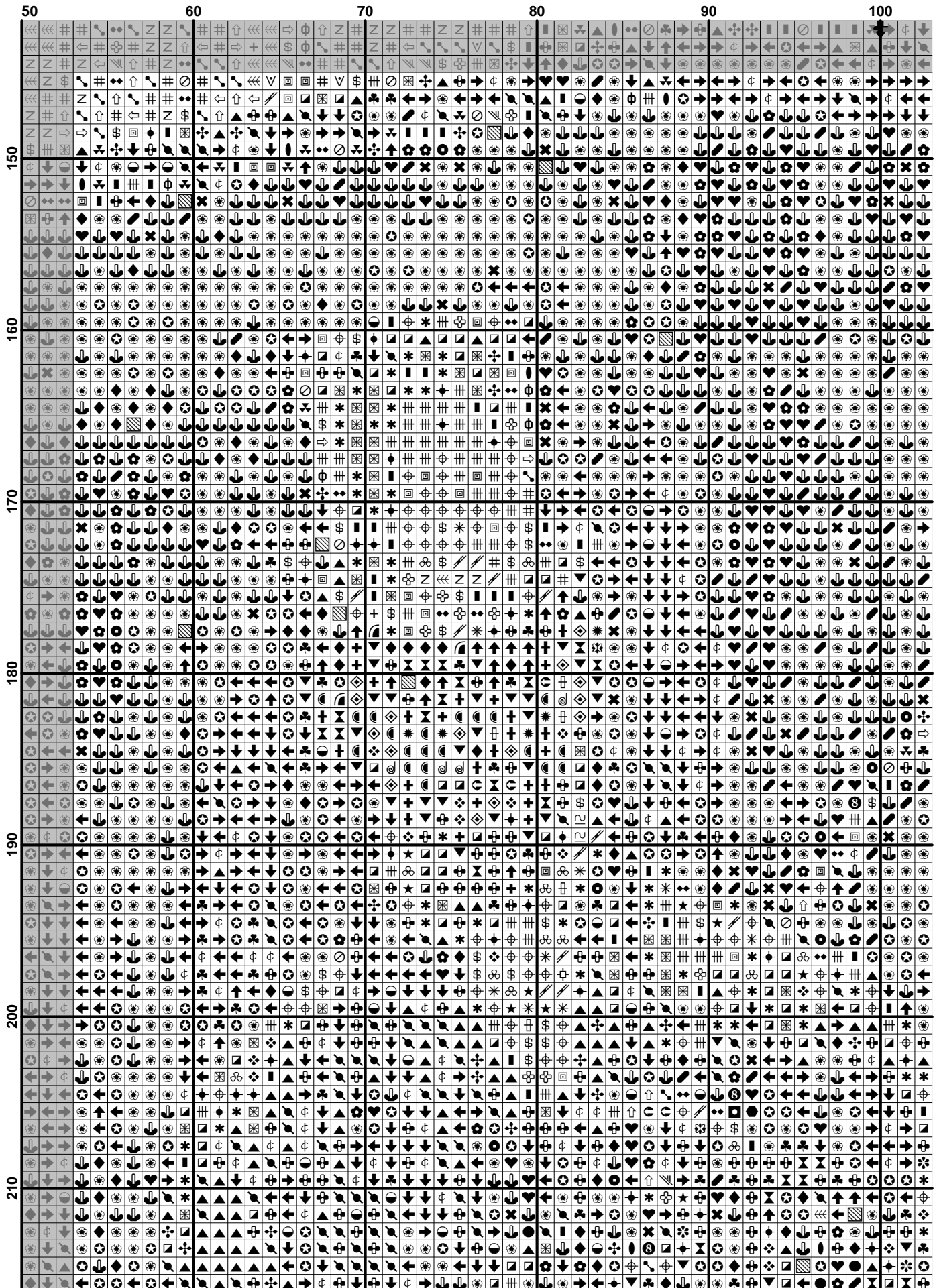


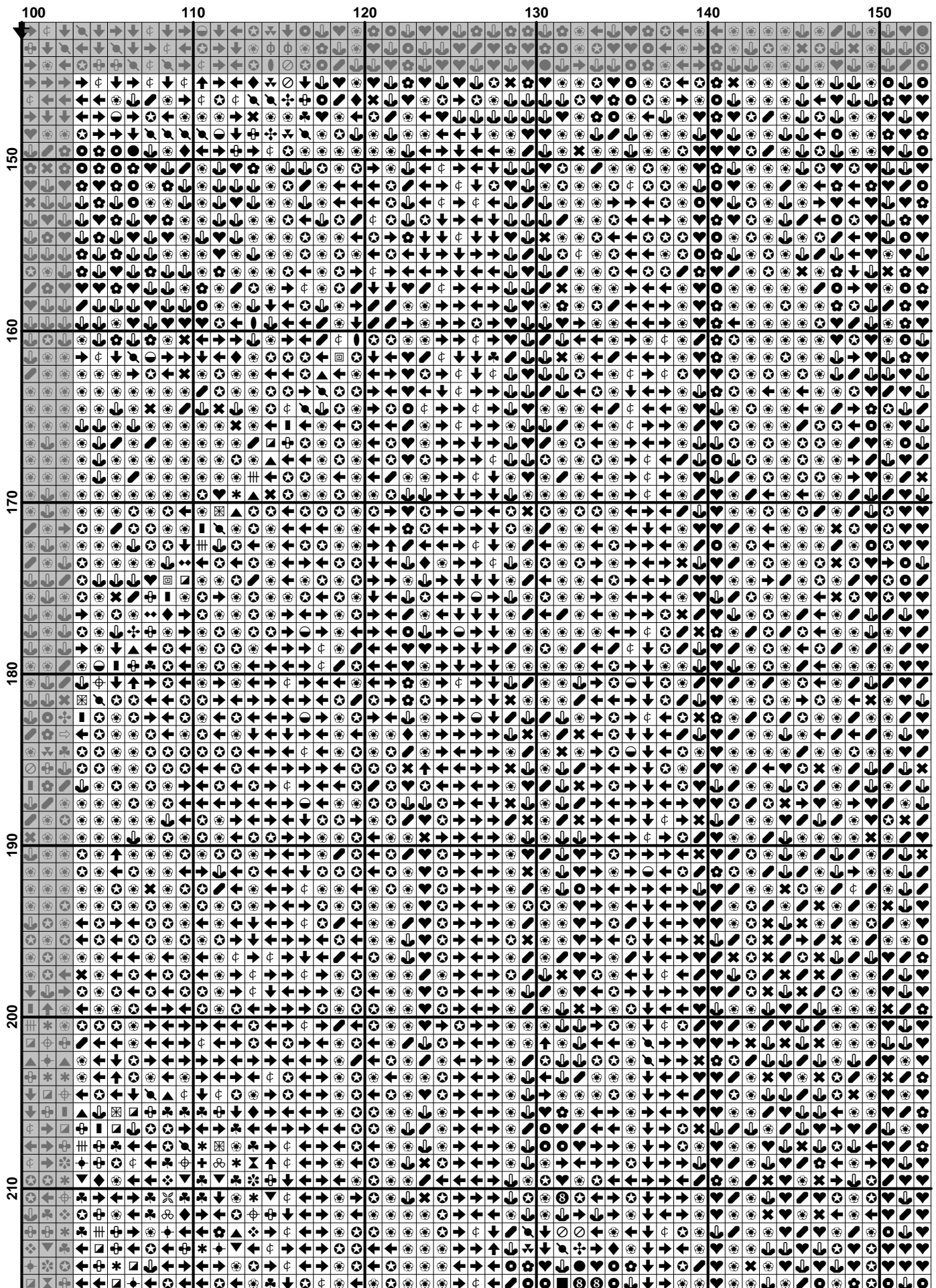


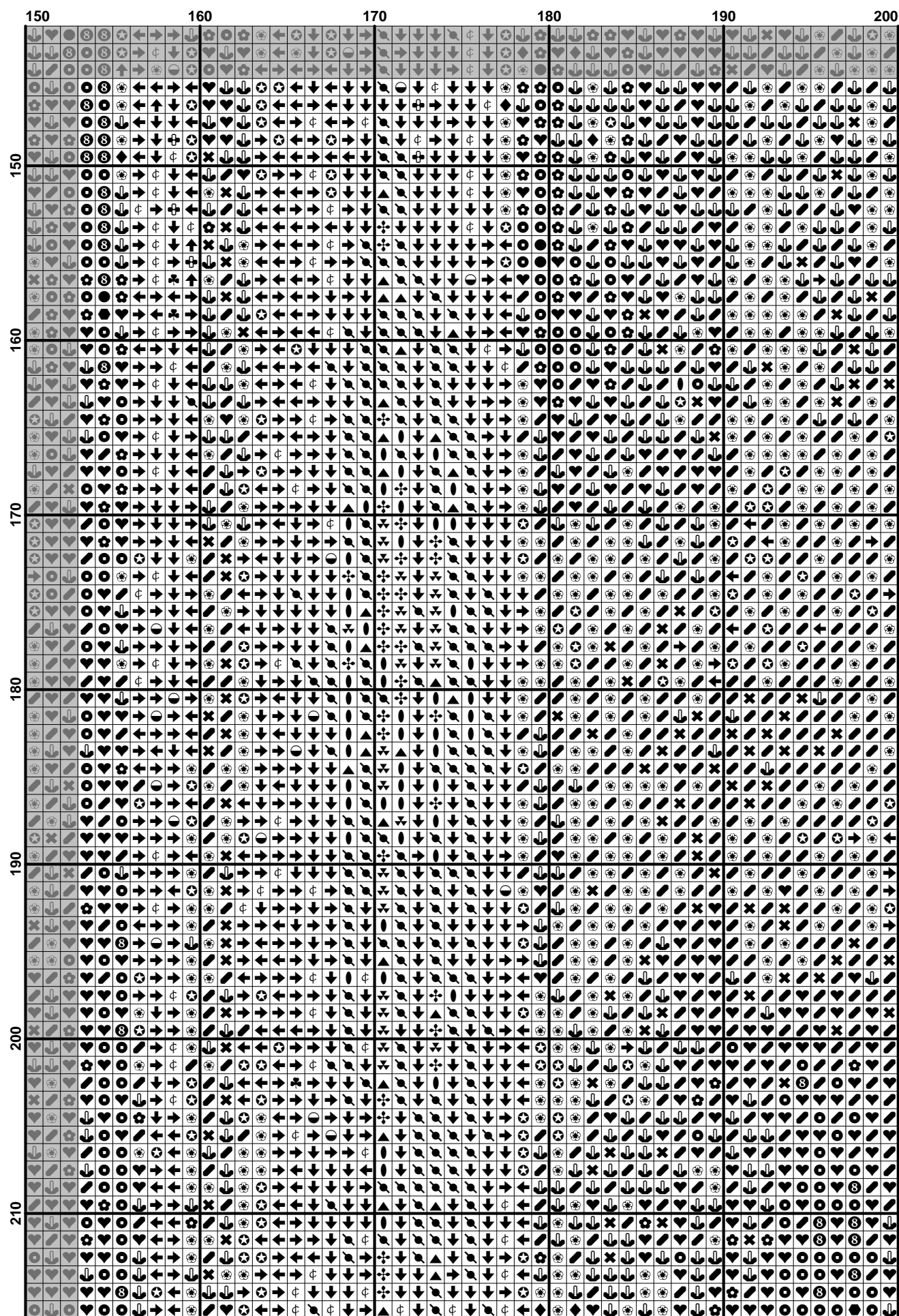


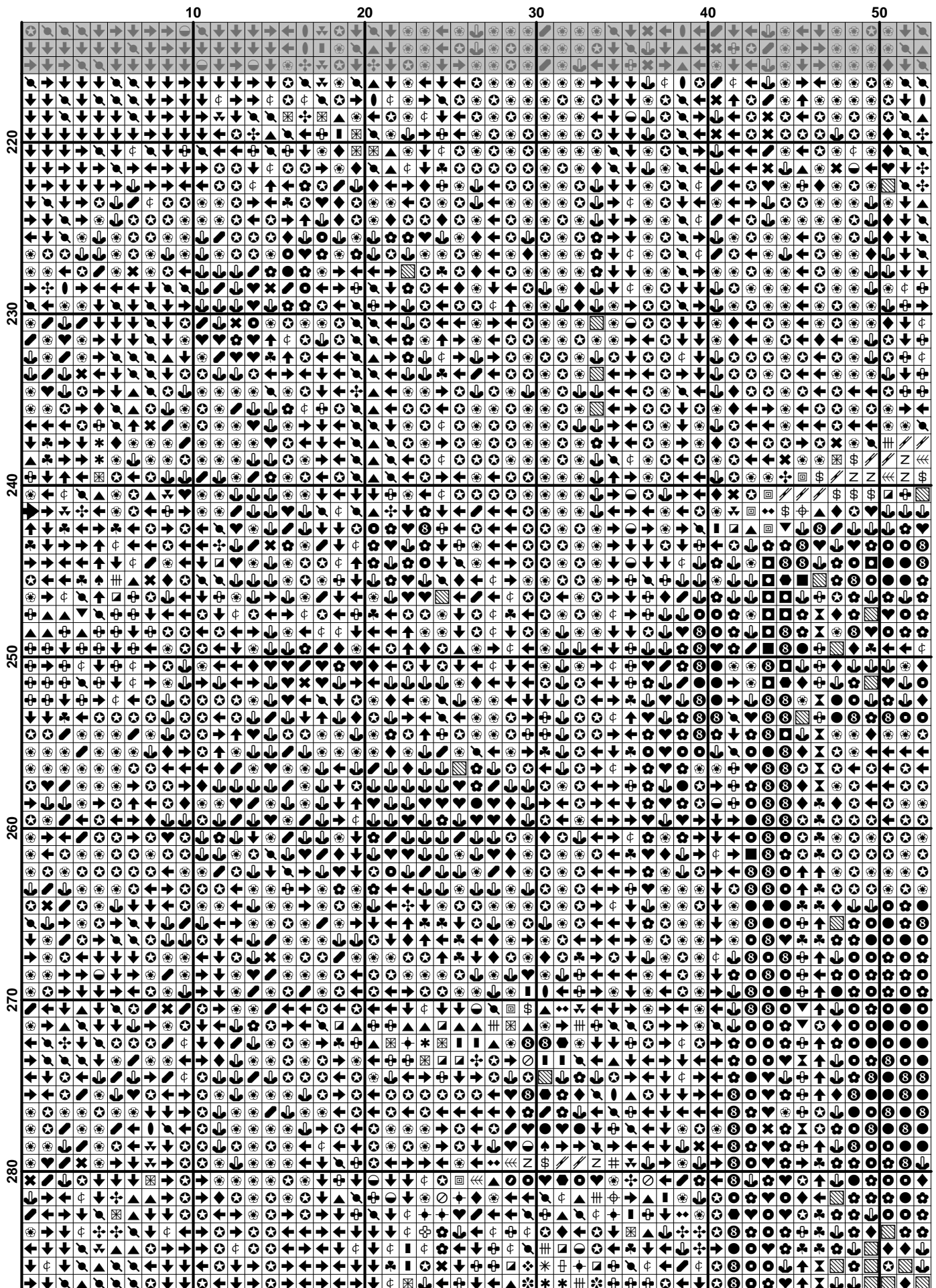




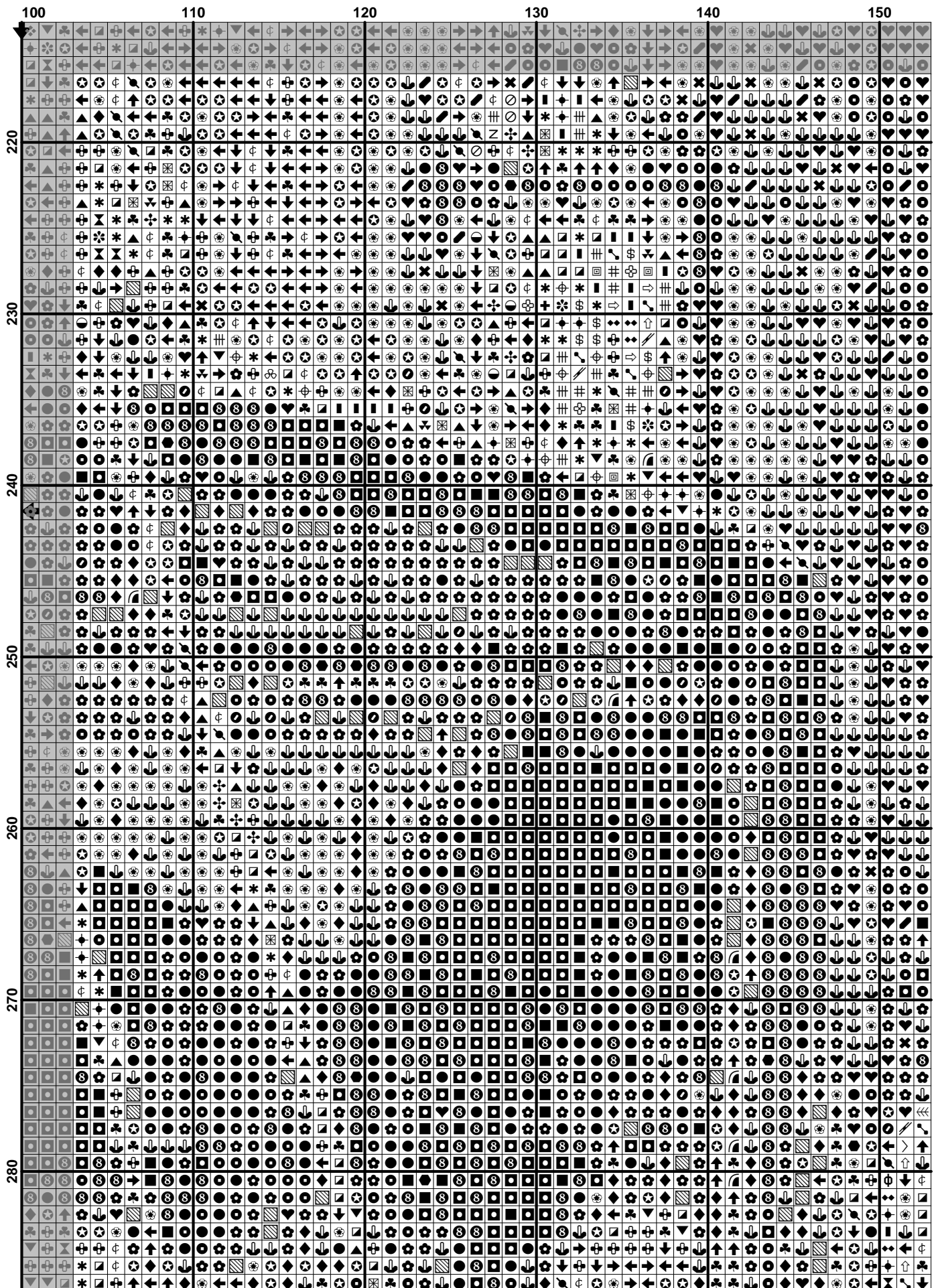


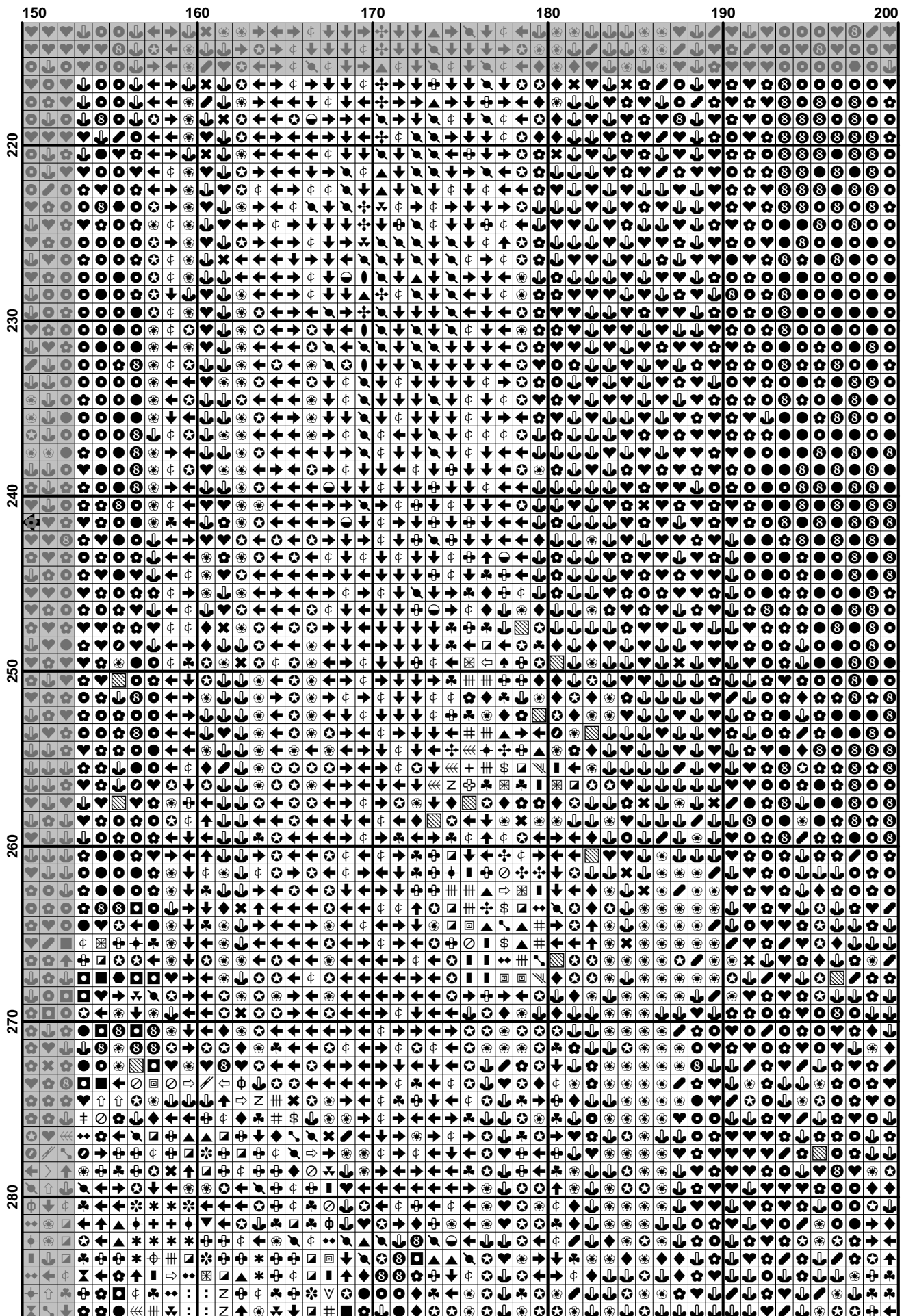


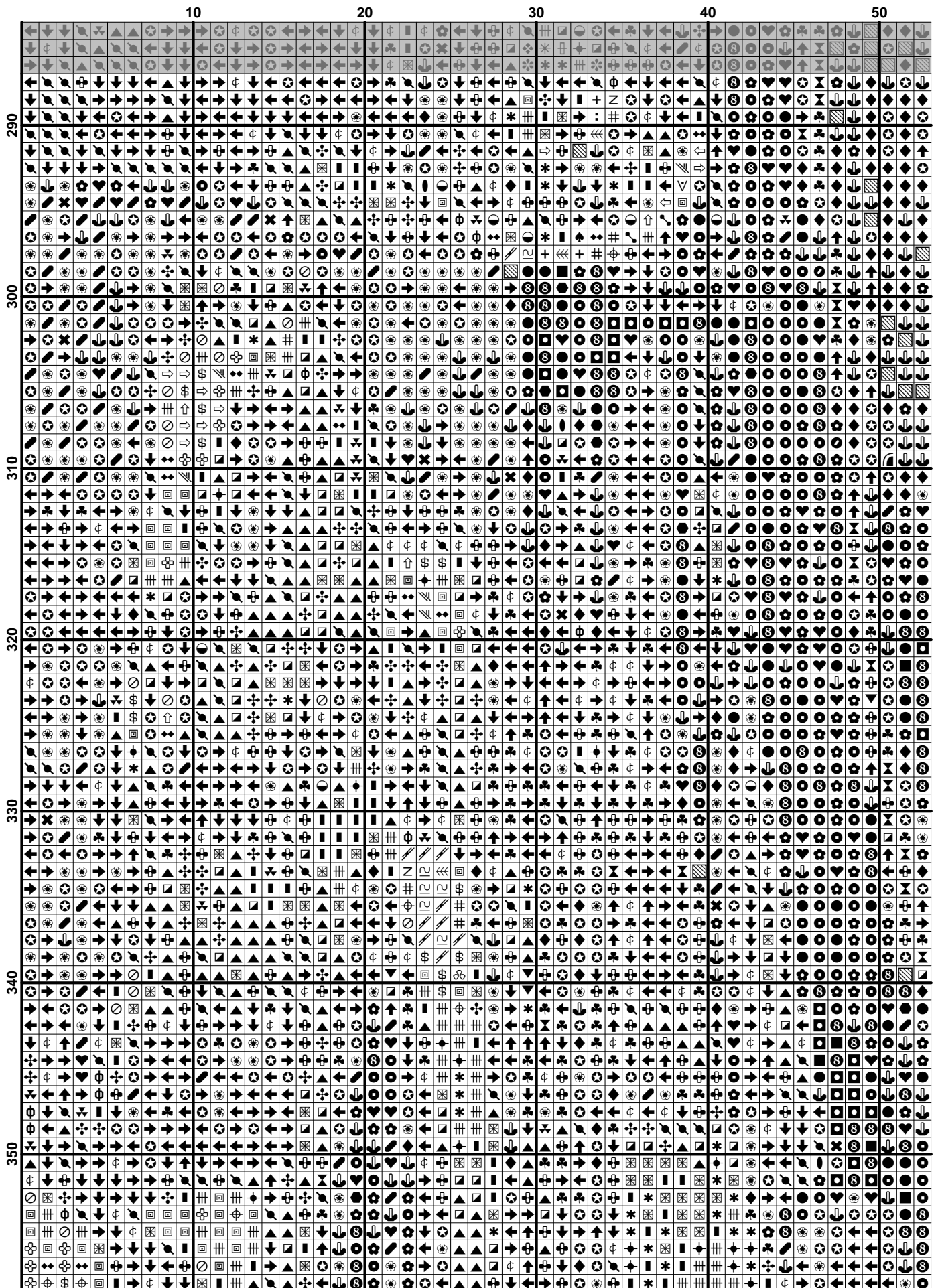












$$(22) \quad \mathcal{L}(\mathcal{A}) = \mathcal{L}(\mathcal{B}) \quad (23)$$

