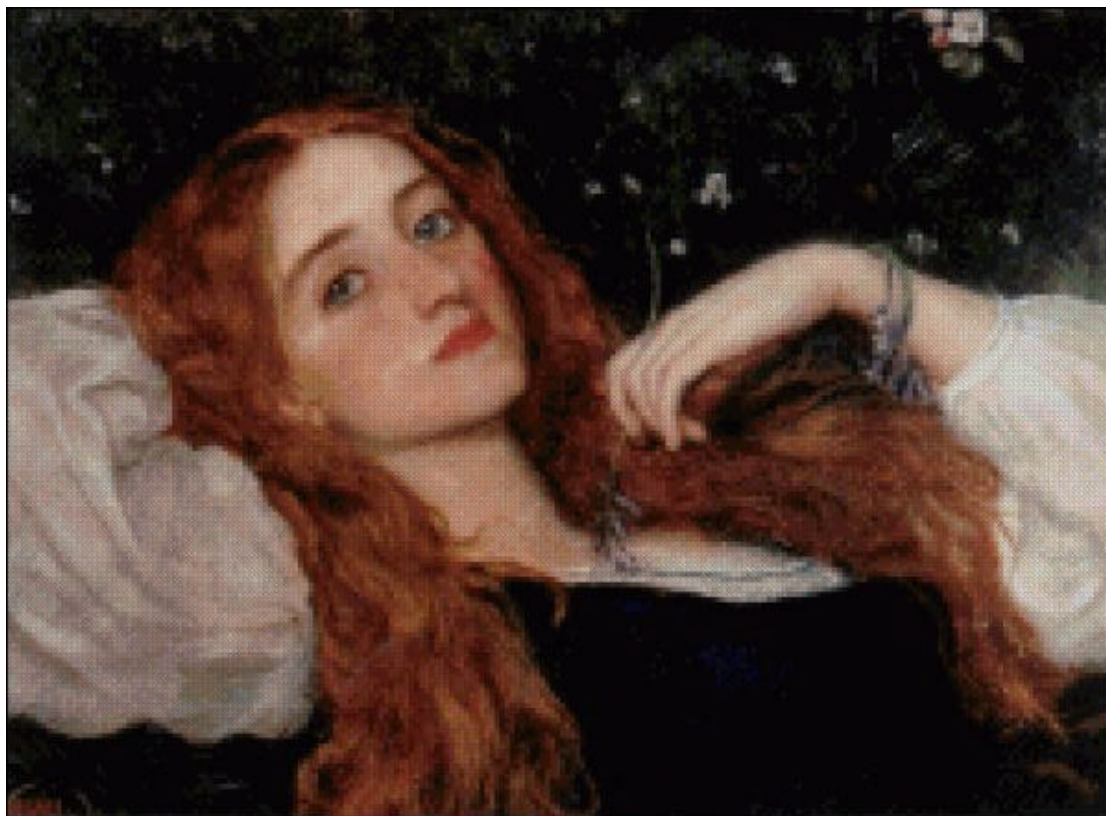


## 608 In the Grass (small)



**This pattern may not be copied, sold or in any other way handled in any way that violates the international copyright laws. If you get hold of this pattern (and or this document) in any other way than via a direct download from [www.goldenkite.com](http://www.goldenkite.com) or via a mail from us, you should report that to us at [legal\\_actions@goldenkite.com](mailto:legal_actions@goldenkite.com) .**

Copyright ( c ) 2005-, Golden Kite. All rights reserved.

## Instructions

Thank you for choosing Golden Kite products!  
We hope you will have lots of fun with this cross-stitch pattern!

### Fabric

Press the fabric with an iron if needed. A good thing to prevent the fabric from fraying is to machine zigzag the edges.

On large patterns, it is easiest to start from the upper left corner of the design. Make sure you have the proper margins before starting and that the fabric piece is of the correct size. The best way to verify this is to count all stitch positions on the fabric from the upper left corner downwards and to the right to make sure there is enough space for the design.

Some prefer to start in the center of the design instead. To locate the center of the fabric, fold the fabric in half both vertically and horizontally. The center is located where these two folds meet.

### Stitches

Each length of DMC tread consists of six strands.

Use two of these strands for all stitches.

Note that some colors may be mixes (or blends) between two different pure colors. In that case take one strand of the two colors each and thread the two strands into the needle at the same time for stitching.

All stitches are full cross-stitches. No half-stitching and no back-stitching is necessary in this pattern.

All cross-stitches will be worked into the holes in the fabric from left to right. Always use the larger holes in the fabric for the stitches. Adjacent stitches should meet in the same hole. Make sure all stitches cross in the same direction.

Please be careful when washing the finished embroidery! The cotton thread may bleed when washed. Only hand wash it in lukewarm water. Remove excess water by roll it in a towel and lay it flat to air dry. Natural fabrics may shrink slightly when washed. We do not recommend washing the embroidery if not absolutely necessary and we take no responsibility for any damage that may occur.

*When you start using this product you agree that Golden Kite (Golden K), or any people working for or in association with Golden Kite (Golden K), cannot be set responsible for any physical, mental, economical or other type of damage caused by this product (including this document, pattern, threads, needles and any other parts received by you from Golden Kite (Golden K)).*

**This pattern may not be copied, sold or in any other way handled in any way that violates the international copyright laws. If you get hold of this pattern (and or this document) in any other way than via a direct download from [www.goldenkite.com](http://www.goldenkite.com) or via a mail from us, you should report that to us at [legal\\_actions@goldenkite.com](mailto:legal_actions@goldenkite.com) .**

## In the Grass (small)

Stitch Count	
Horizontal:	220
Vertical:	161

Recommended Fabric Color
Antique White

This table tells the size of the pattern (without any margins) and the size of the fabric required to stitch the pattern (including recommended margins). 3 inch margins have been added on each side in the 'Including Margins' row.

The sizes are given for 14, 16 and 18 stitches per inch fabrics.

Make sure to use the 'Including Margins' row when cutting the piece of fabric to be used. Also make sure that 3 inch margins are enough for your stitching technique and add more margin areas if necessary.

	14				16				18			
	Width		Height		Width		Height		Width		Height	
	cm	inch	cm	inch	cm	inch	cm	inch	cm	inch	cm	inch
Pattern:	40	15.58	29	11.41	35	13.64	26	9.98	31	12.125	23	8.875
Including Margins:	56	22	45	18	51	20	42	16	47	19	39	15
	10				12				24			
	Width		Height		Width		Height		Width		Height	
	cm	inch	cm	inch	cm	inch	cm	inch	cm	inch	cm	inch
Pattern:	56	21.81	40	15.97	46	18.17	33	13.31	23	9.08	16	6.65
Including Margins:	72	28	56	22	62	25	49	20	39	16	32	13
	25				26				27			
	Width		Height		Width		Height		Width		Height	
	cm	inch	cm	inch	cm	inch	cm	inch	cm	inch	cm	inch
Pattern:	22	8.72	16	6.38	21	8.38	15	6.14	20	8.07	15	5.91
Including Margins:	38	15	32	13	37	15	31	13	36	15	31	12
	28				30				32			
	Width		Height		Width		Height		Width		Height	
	cm	inch	cm	inch	cm	inch	cm	inch	cm	inch	cm	inch
Pattern:	20	7.79	14	5.7	18	7.27	13	5.32	17	6.81	12	4.99
Including Margins:	36	14	30	12	34	14	29	12	33	13	28	11

Solid Color Stitches. Use two strands of the specified color for these stitches.		
Symbol	DMC	Name
›	224	Shell Pink-VY LT
■	310	Black
✦	317	Pewter Gray
⌘	356	Terra Cotta-MD
⌘	407	Desert Sand-DK
✦	413	Pewter Gray-DK
⌘	435	Brown-VY LT
⌘	451	Shell Gray-DK
⌘	452	Shell Gray-MD
⌘	453	Shell Gray-LT
✦	535	Ash Gray-VY LT
✦	632	Desert Sand-UL VY DK
✦	645	Beaver Gray-VY DK
✦	646	Beaver Gray-DK
✦	647	Beaver Gray-MD
↑	648	Beaver Gray-LT
c	712	Cream
†	754	Peach-LT
⌘	758	Terra Cotta-VY LT
●	801	Coffee Brown-DK
u	819	Baby Pink-LT
■	823	Navy Blue-DK
←	839	Beige Brown-DK
⊙	926	Gray Green-MD
∇	927	Gray Green-LT
m	928	Gray Green-VY LT

♥	935	Avocado Green-DK
●	938	Coffee Brown-UL DK
e	948	Peach-VY LT
τ	950	Desert Sand-LT
↓	975	Golden Brown-DK
⌘	3031	Mocha Brown-VY DK
⌘	3041	Antique Violet-MD
⌘	3064	Desert Sand
+	3072	Beaver Gray-VY LT
⌘	3726	Antique Mauve-DK
ρ	3753	Antique Blue-UL VY LT
::	3756	Baby Blue-UL VY LT
⌘	3772	Desert Sand-VY DK
⌘	3773	Desert Sand-MD
⌘	3778	Terra Cotta-LT
5	3779	Terra Cotta-UL VY LT
*	3790	Beige Gray-UL DK
⌘	3799	Pewter Gray-VY DK
⌘	3802	Antique Mauve-VY DK
⇐	3828	Hazelnut Brown
⌘	3830	Terra Cotta-MD
↓	3857	Rosewood-DK
⌘	3858	Rosewood-MD
⌘	3860	Cocoa
#	3861	Cocoa-LT
⌘	3863	Mocha Beige-MD
•	3865	Winter White
>	3866	Mocha Brown-UL VY LT

Blend Stitches. Use one strand of each of DMC1 and DMC2 for these stitches.				
Symbol	DMC1	Name1	DMC2	Name2
	927	Gray Green-LT	3861	Cocoa-LT
4	452	Shell Gray-MD	648	Beaver Gray-LT
⌘	543	Beige Brown-UL VY LT	950	Desert Sand-LT
↓	3828	Hazelnut Brown	3772	Desert Sand-VY DK
●	938	Coffee Brown-UL DK	310	Black
L	3865	Winter White	819	Baby Pink-LT
✦	535	Ash Gray-VY LT	3799	Pewter Gray-VY DK
↓	950	Desert Sand-LT	452	Shell Gray-MD
⇒	3064	Desert Sand	3772	Desert Sand-VY DK
⌘	3778	Terra Cotta-LT	356	Terra Cotta-MD
▲	3790	Beige Gray-UL DK	632	Desert Sand-UL VY DK
+	3772	Desert Sand-VY DK	632	Desert Sand-UL VY DK
⌘	3861	Cocoa-LT	407	Desert Sand-DK
★	927	Gray Green-LT	3041	Antique Violet-MD
✦	3799	Pewter Gray-VY DK	645	Beaver Gray-VY DK
↑	3860	Cocoa	938	Coffee Brown-UL DK
~	3756	Baby Blue-UL VY LT	3865	Winter White
⌘	3721	Shell Pink-DK	632	Desert Sand-UL VY DK
⌘	3857	Rosewood-DK	632	Desert Sand-UL VY DK
⌘	502	Blue Green	645	Beaver Gray-VY DK

●	3857	Rosewood-DK	938	Coffee Brown-UL DK
☒	224	Shell Pink-VY LT	407	Desert Sand-DK
🌿	3857	Rosewood-DK	3858	Rosewood-MD
❖	3860	Cocoa	3861	Cocoa-LT
●	3799	Pewter Gray-VY DK	310	Black
●	935	Avocado Green-DK	310	Black
🌿	535	Ash Gray-VY LT	926	Gray Green-MD
♣	3772	Desert Sand-VY DK	301	Mahogany-MD
☕	3772	Desert Sand-VY DK	3858	Rosewood-MD
▼	3721	Shell Pink-DK	301	Mahogany-MD
☕	632	Desert Sand-UL VY DK	301	Mahogany-MD
=	353	Peach	948	Peach-VY LT
○	950	Desert Sand-LT	224	Shell Pink-VY LT
↑	3864	Mocha Beige-LT	224	Shell Pink-VY LT
➔	632	Desert Sand-UL VY DK	801	Coffee Brown-DK
∞	950	Desert Sand-LT	948	Peach-VY LT
L	407	Desert Sand-DK	3032	Mocha Brown-MD
♠	3721	Shell Pink-DK	356	Terra Cotta-MD
∞	758	Terra Cotta-VY LT	407	Desert Sand-DK
✂	3772	Desert Sand-VY DK	3773	Desert Sand-MD
☕	3860	Cocoa	839	Beige Brown-DK
♣	315	Antique Mauve-VY DK	632	Desert Sand-UL VY DK
❖	3064	Desert Sand	3778	Terra Cotta-LT
☕	356	Terra Cotta-MD	3779	Terra Cotta-UL VY LT
✱	407	Desert Sand-DK	3772	Desert Sand-VY DK
	352	Coral-LT	3773	Desert Sand-MD
2	3824	Apricot-LT	758	Terra Cotta-VY LT
♣	3830	Terra Cotta-MD	3721	Shell Pink-DK
☕	3328	Salmon-DK	3830	Terra Cotta-MD
♦	356	Terra Cotta-MD	3328	Salmon-DK
✂	754	Peach-LT	3779	Terra Cotta-UL VY LT
9	3779	Terra Cotta-UL VY LT	758	Terra Cotta-VY LT
☕	3772	Desert Sand-VY DK	356	Terra Cotta-MD
✂	3864	Mocha Beige-LT	3779	Terra Cotta-UL VY LT
☒	436	Tan	3064	Desert Sand
◇	437	Tan-LT	436	Tan
♦	3802	Antique Mauve-VY DK	801	Coffee Brown-DK
✂	3799	Pewter Gray-VY DK	839	Beige Brown-DK
♣	3072	Beaver Gray-VY LT	453	Shell Gray-LT
\$	3032	Mocha Brown-MD	451	Shell Gray-DK
☕	3860	Cocoa	646	Beaver Gray-DK
//	452	Shell Gray-MD	3861	Cocoa-LT
🌿	3861	Cocoa-LT	503	Blue Green-MD
0	453	Shell Gray-LT	224	Shell Pink-VY LT
/	225	Shell Pink-UL VY LT	712	Cream
✓	225	Shell Pink-UL VY LT	543	Beige Brown-UL VY LT

This table specifies how much thread of each color is required to stitch this pattern. It is good to know that one complete DMC skein contains 313 inches (795 cm) thread.

DMC	Name	Usage (cm)	Usage (inch)	Usage (cm)	Usage (inch)	Usage (cm)	Usage (inch)
		14		16		18	
224	Shell Pink-VY LT	129	50	123	48	110	43
225	Shell Pink-UL VY LT	77	30	74	29	66	25
301	Mahogany-MD	134	52	127	50	115	45
310	Black	3207	1262	3054	1202	2749	1082
315	Antique Mauve-VY DK	42	16	40	15	36	14
317	Pewter Gray	7	2	7	2	6	2
352	Coral-LT	17	6	16	6	15	5
353	Peach	26	10	24	9	22	8
356	Terra Cotta-MD	60	23	57	22	51	20
407	Desert Sand-DK	104	40	99	38	89	35
413	Pewter Gray-DK	12	4	11	4	10	3
435	Brown-VY LT	15	5	14	5	13	5
436	Tan	19	7	18	7	16	6
437	Tan-LT	3	1	3	1	3	1
451	Shell Gray-DK	51	20	48	18	43	16
452	Shell Gray-MD	422	166	402	158	362	142
453	Shell Gray-LT	275	108	262	103	235	92
502	Blue Green	7	2	6	2	6	2
503	Blue Green-MD	10	3	10	3	9	3
535	Ash Gray-VY LT	79	31	75	29	67	26
543	Beige Brown-UL VY LT	65	25	61	24	55	21
632	Desert Sand-UL VY DK	429	168	409	161	368	144
645	Beaver Gray-VY DK	48	18	46	18	41	16
646	Beaver Gray-DK	30	11	29	11	26	10
647	Beaver Gray-MD	33	12	32	12	29	11
648	Beaver Gray-LT	138	54	132	51	119	46
712	Cream	83	32	79	31	71	27
754	Peach-LT	30	11	29	11	26	10
758	Terra Cotta-VY LT	125	49	119	46	107	42
801	Coffee Brown-DK	203	79	193	75	174	68
819	Baby Pink-LT	53	20	51	20	46	18
823	Navy Blue-DK	17	6	16	6	14	5
839	Beige Brown-DK	116	45	111	43	99	38
926	Gray Green-MD	19	7	18	7	16	6
927	Gray Green-LT	54	21	52	20	46	18
928	Gray Green-VY LT	32	12	30	11	27	10
935	Avocado Green-DK	246	96	234	92	210	82
938	Coffee Brown-UL DK	470	185	448	176	403	158
948	Peach-VY LT	98	38	93	36	84	33
950	Desert Sand-LT	161	63	153	60	138	54
975	Golden Brown-DK	57	22	54	21	49	19
3031	Mocha Brown-VY DK	82	32	78	30	70	27
3032	Mocha Brown-MD	38	14	36	14	32	12
3041	Antique Violet-MD	24	9	23	9	20	7
3064	Desert Sand	65	25	62	24	56	22
3072	Beaver Gray-VY LT	98	38	93	36	84	33
3328	Salmon-DK	3	1	3	1	3	1
3721	Shell Pink-DK	83	32	79	31	71	27
3726	Antique Mauve-DK	2	1	2	1	2	1
3753	Antique Blue-UL VY LT	3	1	2	1	2	1
3756	Baby Blue-UL VY LT	35	13	34	13	30	11
3772	Desert Sand-VY DK	301	118	287	112	258	101
3773	Desert Sand-MD	91	35	86	33	78	30
3778	Terra Cotta-LT	18	7	17	6	15	5

Copyright ( c ) 2005-, Golden Kite (Golden K.)

Internet: [www.goldenkite.com](http://www.goldenkite.com)

e-mail: [info@goldenkite.com](mailto:info@goldenkite.com)

3779	Terra Cotta-UL VY LT	114	44	109	42	98	38
3790	Beige Gray-UL DK	27	10	25	9	23	9
3799	Pewter Gray-VY DK	482	189	459	180	413	162
3802	Antique Mauve-VY DK	125	49	119	46	107	42
3824	Apricot-LT	8	3	7	2	7	2
3828	Hazelnut Brown	15	5	14	5	13	5
3830	Terra Cotta-MD	5	1	5	1	4	1
3857	Rosewood-DK	384	151	366	144	329	129
3858	Rosewood-MD	277	109	263	103	237	93
3860	Cocoa	87	34	83	32	74	29
3861	Cocoa-LT	184	72	175	68	157	61
3863	Mocha Beige-MD	17	6	16	6	14	5
3864	Mocha Beige-LT	59	23	56	22	51	20
3865	Winter White	49	19	47	18	42	16
3866	Mocha Brown-UL VY LT	85	33	81	31	73	28

Extended thread usage table.							
DMC	Name	Usage (cm)	Usage (inch)	Usage (cm)	Usage (inch)	Usage (cm)	Usage (inch)
		10		12		24	
224	Shell Pink-VY LT	198	77	165	65	83	32
225	Shell Pink-UL VY LT	119	45	99	38	50	19
301	Mahogany-MD	207	81	173	68	86	34
310	Black	4948	1948	4124	1623	2062	812
315	Antique Mauve-VY DK	65	25	54	21	27	11
317	Pewter Gray	11	4	9	3	5	2
352	Coral-LT	27	9	23	8	11	4
353	Peach	40	14	33	12	17	6
356	Terra Cotta-MD	92	36	77	30	38	15
407	Desert Sand-DK	160	63	134	53	67	26
413	Pewter Gray-DK	18	5	15	5	8	2
435	Brown-VY LT	23	9	20	8	10	4
436	Tan	29	11	24	9	12	5
437	Tan-LT	5	2	5	2	2	1
451	Shell Gray-DK	77	29	65	24	32	12
452	Shell Gray-MD	652	256	543	213	272	107
453	Shell Gray-LT	423	166	353	138	176	69
502	Blue Green	11	4	9	3	5	2
503	Blue Green-MD	16	5	14	5	7	2
535	Ash Gray-VY LT	121	47	101	39	50	20
543	Beige Brown-UL VY LT	99	38	83	32	41	16
632	Desert Sand-UL VY DK	662	259	552	216	276	108
645	Beaver Gray-VY DK	74	29	62	24	31	12
646	Beaver Gray-DK	47	18	39	15	20	8
647	Beaver Gray-MD	52	20	44	17	22	8
648	Beaver Gray-LT	214	83	179	69	89	35
712	Cream	128	49	107	41	53	20
754	Peach-LT	47	18	39	15	20	8
758	Terra Cotta-VY LT	193	76	161	63	80	32
801	Coffee Brown-DK	313	122	261	102	131	51
819	Baby Pink-LT	83	32	69	27	35	14
823	Navy Blue-DK	25	9	21	8	11	4
839	Beige Brown-DK	178	68	149	57	74	29
926	Gray Green-MD	29	11	24	9	12	5
927	Gray Green-LT	83	32	69	27	35	14
928	Gray Green-VY LT	49	18	41	15	20	8
935	Avocado Green-DK	378	148	315	123	158	62



938	Coffee Brown-UL DK	725	284	605	237	302	119
948	Peach-VY LT	151	59	126	50	63	25
950	Desert Sand-LT	248	97	207	81	104	41
975	Golden Brown-DK	88	34	74	29	37	14
3031	Mocha Brown-VY DK	126	49	105	41	53	20
3032	Mocha Brown-MD	58	22	48	18	24	9
3041	Antique Violet-MD	36	13	30	11	15	5
3064	Desert Sand	101	40	84	33	42	17
3072	Beaver Gray-VY LT	151	59	126	50	63	25
3328	Salmon-DK	5	2	5	2	2	1
3721	Shell Pink-DK	128	49	107	41	53	20
3726	Antique Mauve-DK	4	2	3	2	2	1
3753	Antique Blue-UL VY LT	4	2	3	2	2	1
3756	Baby Blue-UL VY LT	54	20	45	17	23	8
3772	Desert Sand-VY DK	464	182	387	152	194	76
3773	Desert Sand-MD	140	54	117	45	59	23
3778	Terra Cotta-LT	27	9	23	8	11	4
3779	Terra Cotta-UL VY LT	176	68	147	57	74	29
3790	Beige Gray-UL DK	41	16	35	14	17	7
3799	Pewter Gray-VY DK	743	292	620	243	310	122
3802	Antique Mauve-VY DK	193	76	161	63	80	32
3824	Apricot-LT	13	4	11	3	5	2
3828	Hazelnut Brown	23	9	20	8	10	4
3830	Terra Cotta-MD	7	2	6	2	3	1
3857	Rosewood-DK	592	232	494	194	247	97
3858	Rosewood-MD	427	167	356	140	178	70
3860	Cocoa	133	52	111	44	56	22
3861	Cocoa-LT	283	110	236	92	118	46
3863	Mocha Beige-MD	25	9	21	8	11	4
3864	Mocha Beige-LT	92	36	77	30	38	15
3865	Winter White	76	29	63	24	32	12
3866	Mocha Brown-UL VY LT	131	50	110	42	55	21

Extended thread usage table.							
DMC	Name	Usage (cm)	Usage (inch)	Usage (cm)	Usage (inch)	Usage (cm)	Usage (inch)
		25		26		27	
224	Shell Pink-VY LT	79	31	76	30	73	29
225	Shell Pink-UL VY LT	48	18	46	17	44	17
301	Mahogany-MD	83	32	80	31	77	30
310	Black	1979	779	1903	749	1833	721
315	Antique Mauve-VY DK	26	10	25	10	24	9
317	Pewter Gray	4	1	4	1	4	1
352	Coral-LT	11	4	10	3	10	3
353	Peach	16	6	15	6	15	5
356	Terra Cotta-MD	37	14	35	14	34	13
407	Desert Sand-DK	64	25	62	24	59	23
413	Pewter Gray-DK	7	2	7	2	7	2
435	Brown-VY LT	9	4	9	3	9	3
436	Tan	12	4	11	4	11	4
437	Tan-LT	2	1	2	1	2	1
451	Shell Gray-DK	31	12	30	11	29	11
452	Shell Gray-MD	261	102	251	98	241	95
453	Shell Gray-LT	169	66	163	64	157	61
502	Blue Green	4	1	4	1	4	1
503	Blue Green-MD	6	2	6	2	6	2
535	Ash Gray-VY LT	48	19	46	18	45	17



543	Beige Brown-UL VY LT	40	15	38	15	37	14
632	Desert Sand-UL VY DK	265	104	255	100	245	96
645	Beaver Gray-VY DK	30	12	28	11	27	11
646	Beaver Gray-DK	19	7	18	7	17	7
647	Beaver Gray-MD	21	8	20	8	19	7
648	Beaver Gray-LT	86	33	82	32	79	31
712	Cream	51	19	49	19	47	18
754	Peach-LT	19	7	18	7	17	7
758	Terra Cotta-VY LT	77	30	74	29	71	28
801	Coffee Brown-DK	125	49	120	47	116	45
819	Baby Pink-LT	33	13	32	12	31	12
823	Navy Blue-DK	10	4	10	3	9	3
839	Beige Brown-DK	71	27	69	26	66	25
926	Gray Green-MD	12	4	11	4	11	4
927	Gray Green-LT	33	13	32	12	31	12
928	Gray Green-VY LT	19	7	19	7	18	7
935	Avocado Green-DK	151	59	145	57	140	55
938	Coffee Brown-UL DK	290	114	279	109	269	105
948	Peach-VY LT	60	24	58	23	56	22
950	Desert Sand-LT	99	39	96	37	92	36
975	Golden Brown-DK	35	14	34	13	33	13
3031	Mocha Brown-VY DK	50	19	48	19	47	18
3032	Mocha Brown-MD	23	9	22	8	21	8
3041	Antique Violet-MD	14	5	14	5	13	5
3064	Desert Sand	40	16	39	15	37	15
3072	Beaver Gray-VY LT	60	24	58	23	56	22
3328	Salmon-DK	2	1	2	1	2	1
3721	Shell Pink-DK	51	19	49	19	47	18
3726	Antique Mauve-DK	1	1	1	1	1	1
3753	Antique Blue-UL VY LT	1	1	1	1	1	1
3756	Baby Blue-UL VY LT	22	8	21	8	20	7
3772	Desert Sand-VY DK	186	73	179	70	172	67
3773	Desert Sand-MD	56	22	54	21	52	20
3778	Terra Cotta-LT	11	4	10	3	10	3
3779	Terra Cotta-UL VY LT	71	27	68	26	65	25
3790	Beige Gray-UL DK	17	6	16	6	15	6
3799	Pewter Gray-VY DK	297	117	286	112	275	108
3802	Antique Mauve-VY DK	77	30	74	29	71	28
3824	Apricot-LT	5	1	5	1	5	1
3828	Hazelnut Brown	9	4	9	3	9	3
3830	Terra Cotta-MD	3	1	3	1	3	1
3857	Rosewood-DK	237	93	228	89	219	86
3858	Rosewood-MD	171	67	164	64	158	62
3860	Cocoa	53	21	51	20	49	19
3861	Cocoa-LT	113	44	109	42	105	41
3863	Mocha Beige-MD	10	4	10	3	9	3
3864	Mocha Beige-LT	37	14	35	14	34	13
3865	Winter White	30	12	29	11	28	11
3866	Mocha Brown-UL VY LT	53	20	51	19	49	19

Extended thread usage table.							
DMC	Name	Usage (cm)	Usage (inch)	Usage (cm)	Usage (inch)	Usage (cm)	Usage (inch)
		28		30		32	
224	Shell Pink-VY LT	71	28	66	26	62	24
225	Shell Pink-UL VY LT	42	16	40	15	37	14
301	Mahogany-MD	74	29	69	27	65	25
310	Black	1767	696	1649	649	1546	609

Copyright ( c ) 2005-, Golden Kite (Golden K.)

Internet: [www.goldenkite.com](http://www.goldenkite.com)

e-mail: [info@goldenkite.com](mailto:info@goldenkite.com)

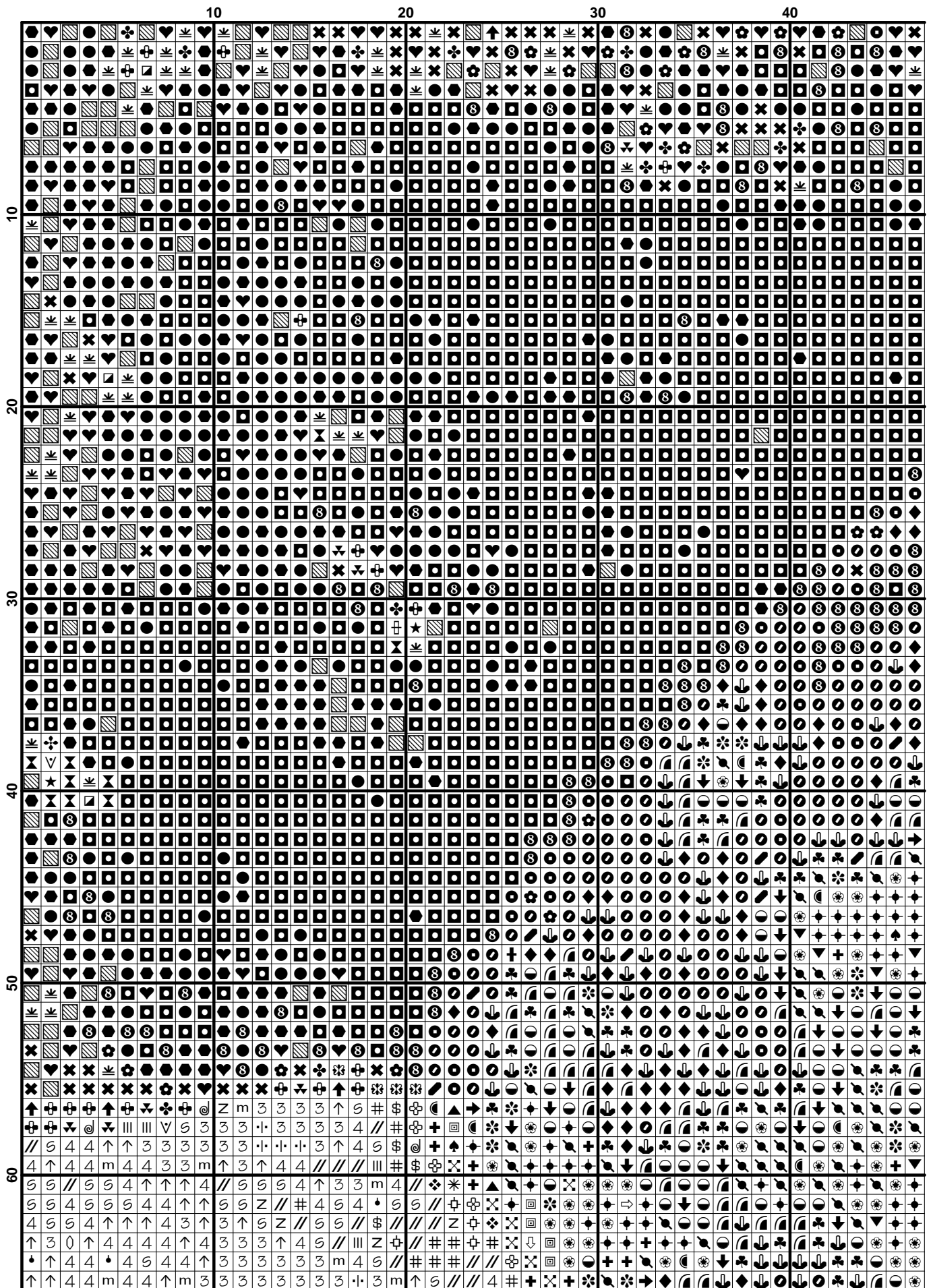
315	Antique Mauve-VY DK	23	9	22	8	20	8
317	Pewter Gray	4	1	4	1	3	1
352	Coral-LT	10	3	9	3	8	3
353	Peach	14	5	13	5	12	5
356	Terra Cotta-MD	33	13	31	12	29	11
407	Desert Sand-DK	57	23	53	21	50	20
413	Pewter Gray-DK	6	2	6	2	6	2
435	Brown-VY LT	8	3	8	3	7	3
436	Tan	10	4	10	4	9	3
437	Tan-LT	2	1	2	1	2	1
451	Shell Gray-DK	28	10	26	10	24	9
452	Shell Gray-MD	233	91	217	85	204	80
453	Shell Gray-LT	151	59	141	55	132	52
502	Blue Green	4	1	4	1	3	1
503	Blue Green-MD	6	2	5	2	5	2
535	Ash Gray-VY LT	43	17	40	16	38	15
543	Beige Brown-UL VY LT	35	14	33	13	31	12
632	Desert Sand-UL VY DK	237	93	221	86	207	81
645	Beaver Gray-VY DK	26	10	25	10	23	9
646	Beaver Gray-DK	17	6	16	6	15	6
647	Beaver Gray-MD	19	7	17	7	16	6
648	Beaver Gray-LT	77	30	71	28	67	26
712	Cream	46	17	43	16	40	15
754	Peach-LT	17	6	16	6	15	6
758	Terra Cotta-VY LT	69	27	64	25	60	24
801	Coffee Brown-DK	112	44	104	41	98	38
819	Baby Pink-LT	30	12	28	11	26	10
823	Navy Blue-DK	9	3	8	3	8	3
839	Beige Brown-DK	64	24	59	23	56	21
926	Gray Green-MD	10	4	10	4	9	3
927	Gray Green-LT	30	12	28	11	26	10
928	Gray Green-VY LT	17	6	16	6	15	6
935	Avocado Green-DK	135	53	126	49	118	46
938	Coffee Brown-UL DK	259	102	242	95	227	89
948	Peach-VY LT	54	21	50	20	47	19
950	Desert Sand-LT	89	35	83	32	78	30
975	Golden Brown-DK	32	12	29	11	28	11
3031	Mocha Brown-VY DK	45	17	42	16	39	15
3032	Mocha Brown-MD	21	8	19	7	18	7
3041	Antique Violet-MD	13	5	12	4	11	4
3064	Desert Sand	36	14	34	13	32	12
3072	Beaver Gray-VY LT	54	21	50	20	47	19
3328	Salmon-DK	2	1	2	1	2	1
3721	Shell Pink-DK	46	17	43	16	40	15
3726	Antique Mauve-DK	1	1	1	1	1	1
3753	Antique Blue-UL VY LT	1	1	1	1	1	1
3756	Baby Blue-UL VY LT	19	7	18	7	17	6
3772	Desert Sand-VY DK	166	65	155	61	145	57
3773	Desert Sand-MD	50	19	47	18	44	17
3778	Terra Cotta-LT	10	3	9	3	8	3
3779	Terra Cotta-UL VY LT	63	24	59	23	55	21
3790	Beige Gray-UL DK	15	6	14	5	13	5
3799	Pewter Gray-VY DK	266	104	248	97	232	91
3802	Antique Mauve-VY DK	69	27	64	25	60	24
3824	Apricot-LT	5	1	4	1	4	1
3828	Hazelnut Brown	8	3	8	3	7	3
3830	Terra Cotta-MD	3	1	2	1	2	1
3857	Rosewood-DK	212	83	197	77	185	73
3858	Rosewood-MD	152	60	142	56	133	52

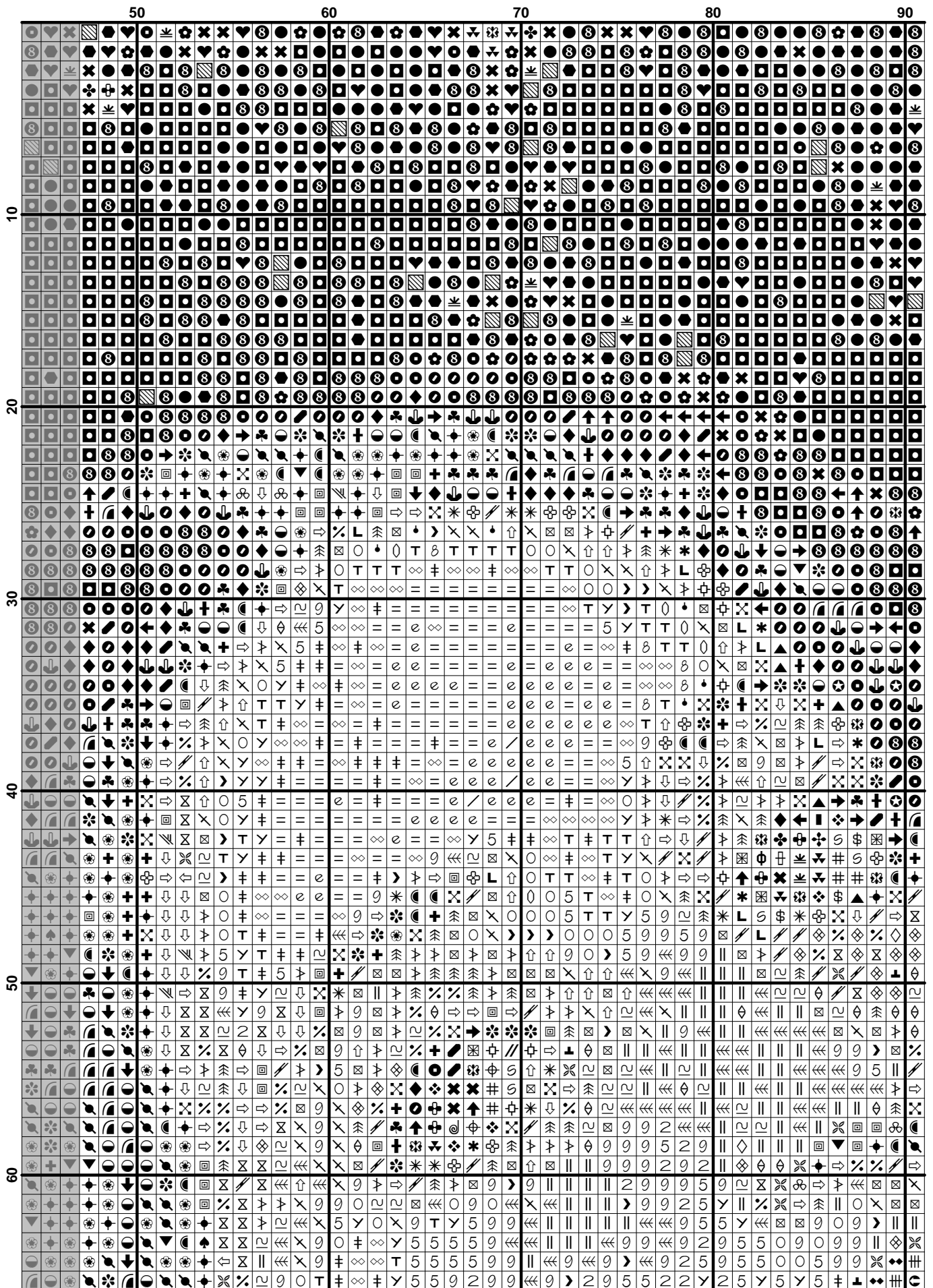
Copyright ( c ) 2005-, Golden Kite (Golden K.)

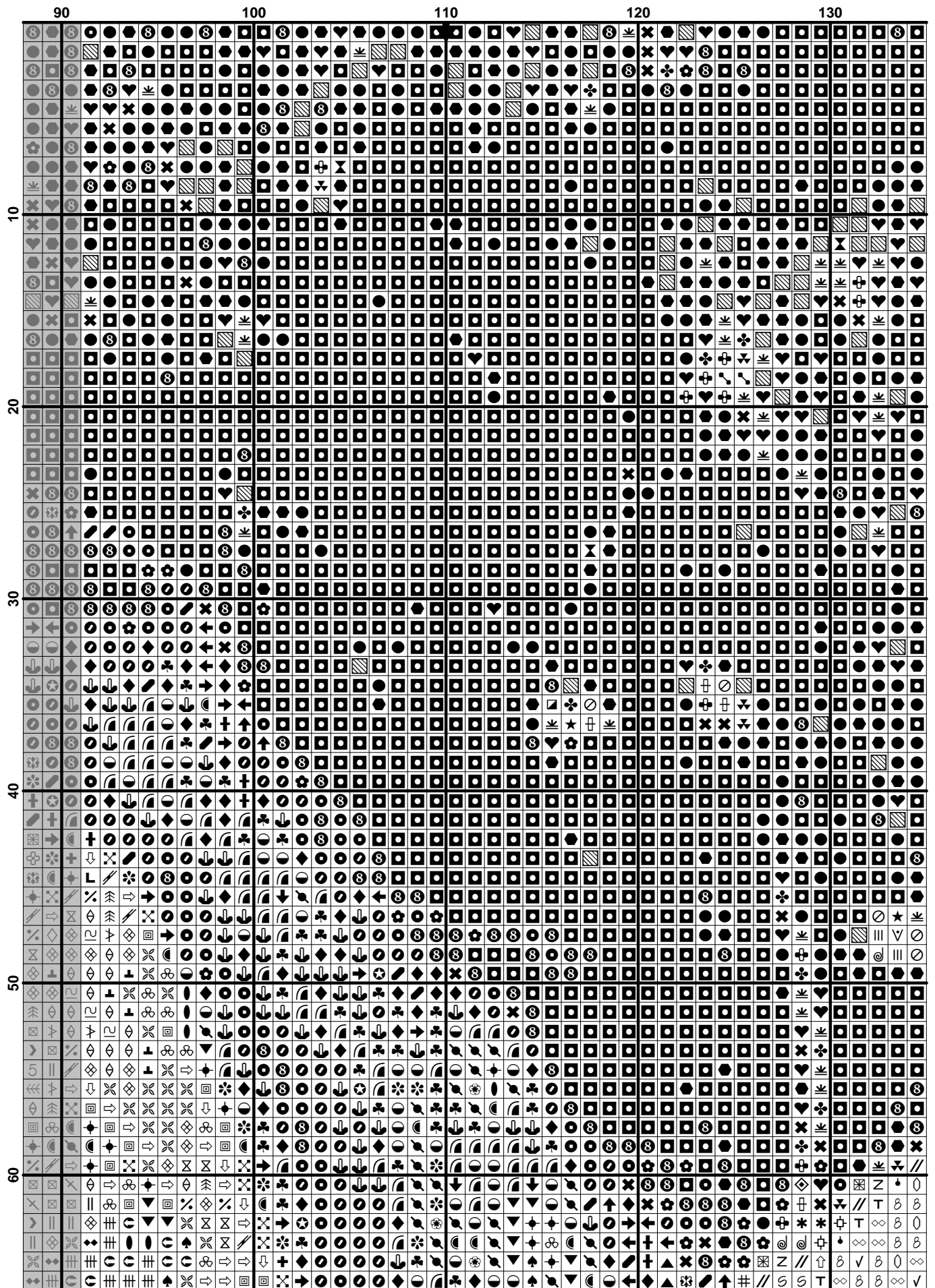
Internet: [www.goldenkite.com](http://www.goldenkite.com)

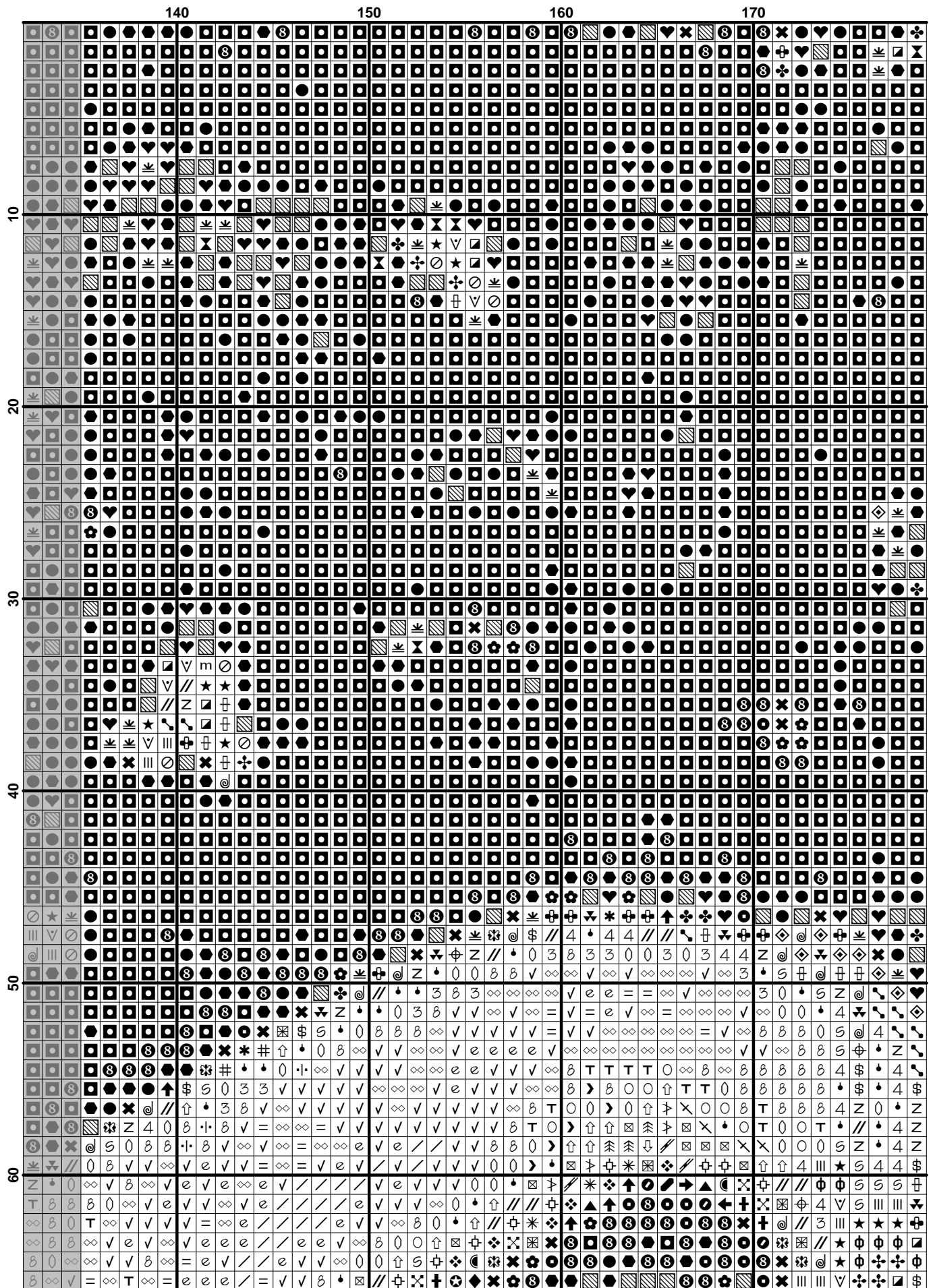
e-mail: [info@goldenkite.com](mailto:info@goldenkite.com)

3860	Cocoa	48	19	44	17	42	16
3861	Cocoa-LT	101	39	94	37	88	34
3863	Mocha Beige-MD	9	3	8	3	8	3
3864	Mocha Beige-LT	33	13	31	12	29	11
3865	Winter White	27	10	25	10	24	9
3866	Mocha Brown-UL VY LT	47	18	44	17	41	16





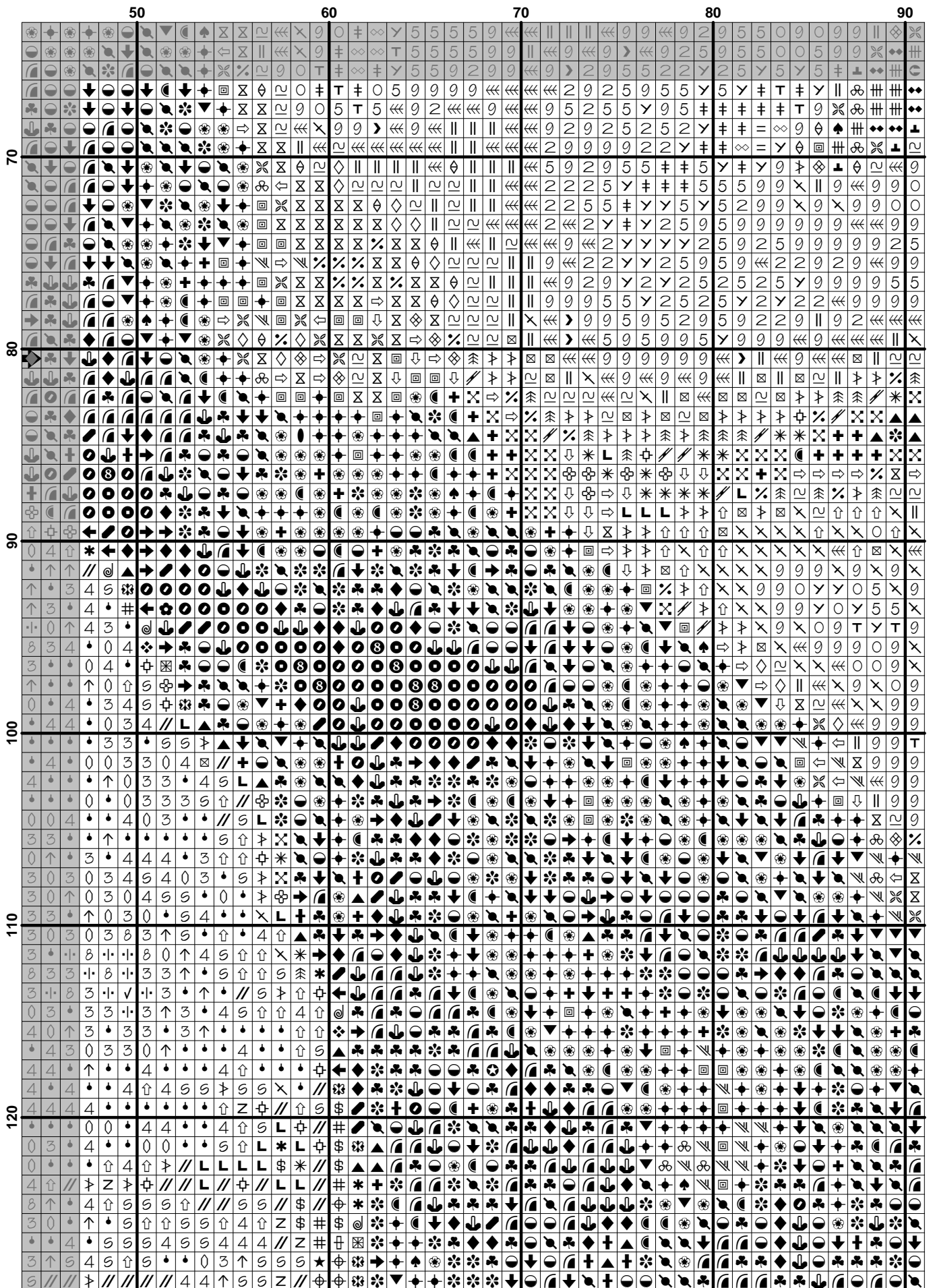


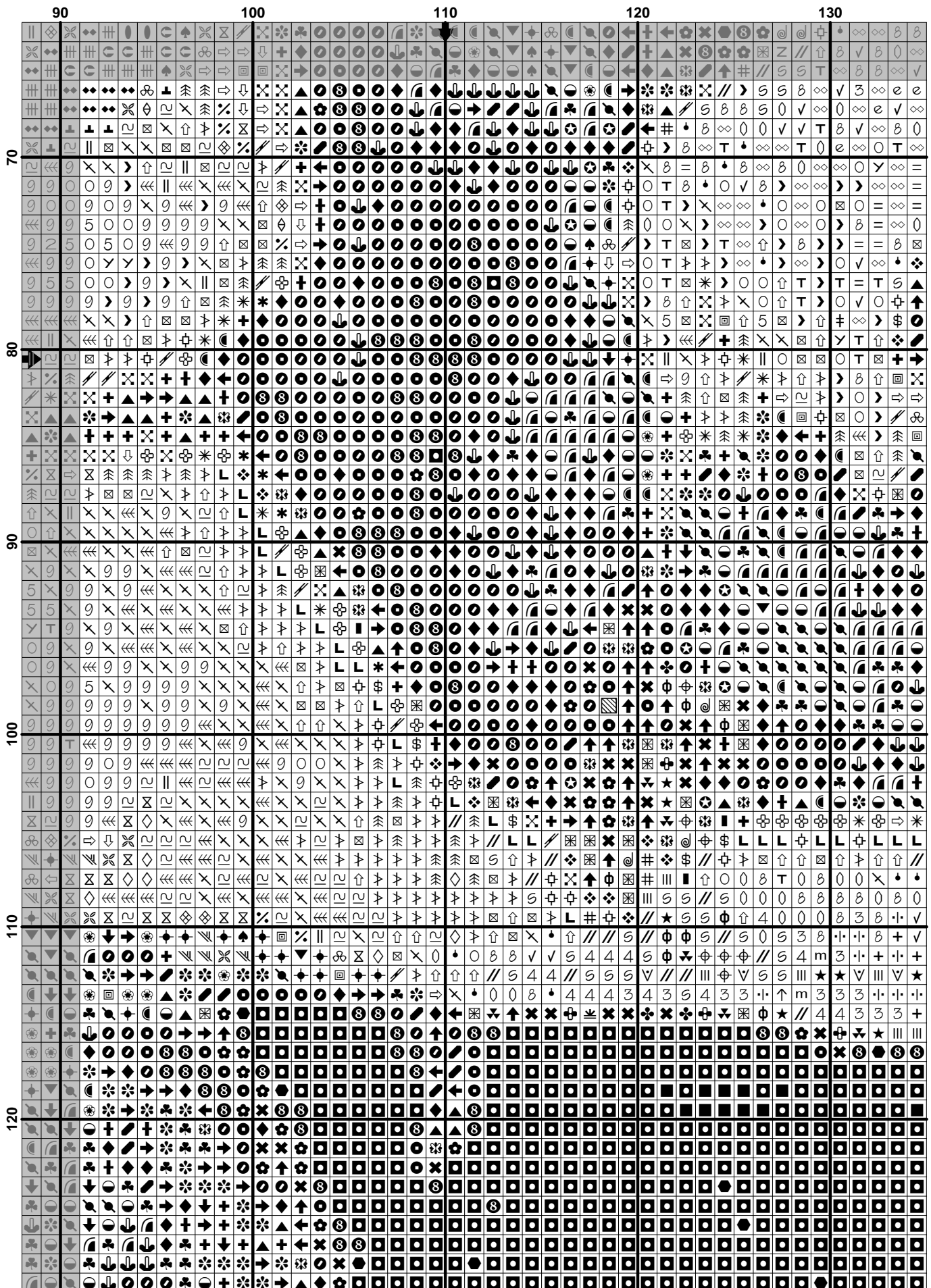


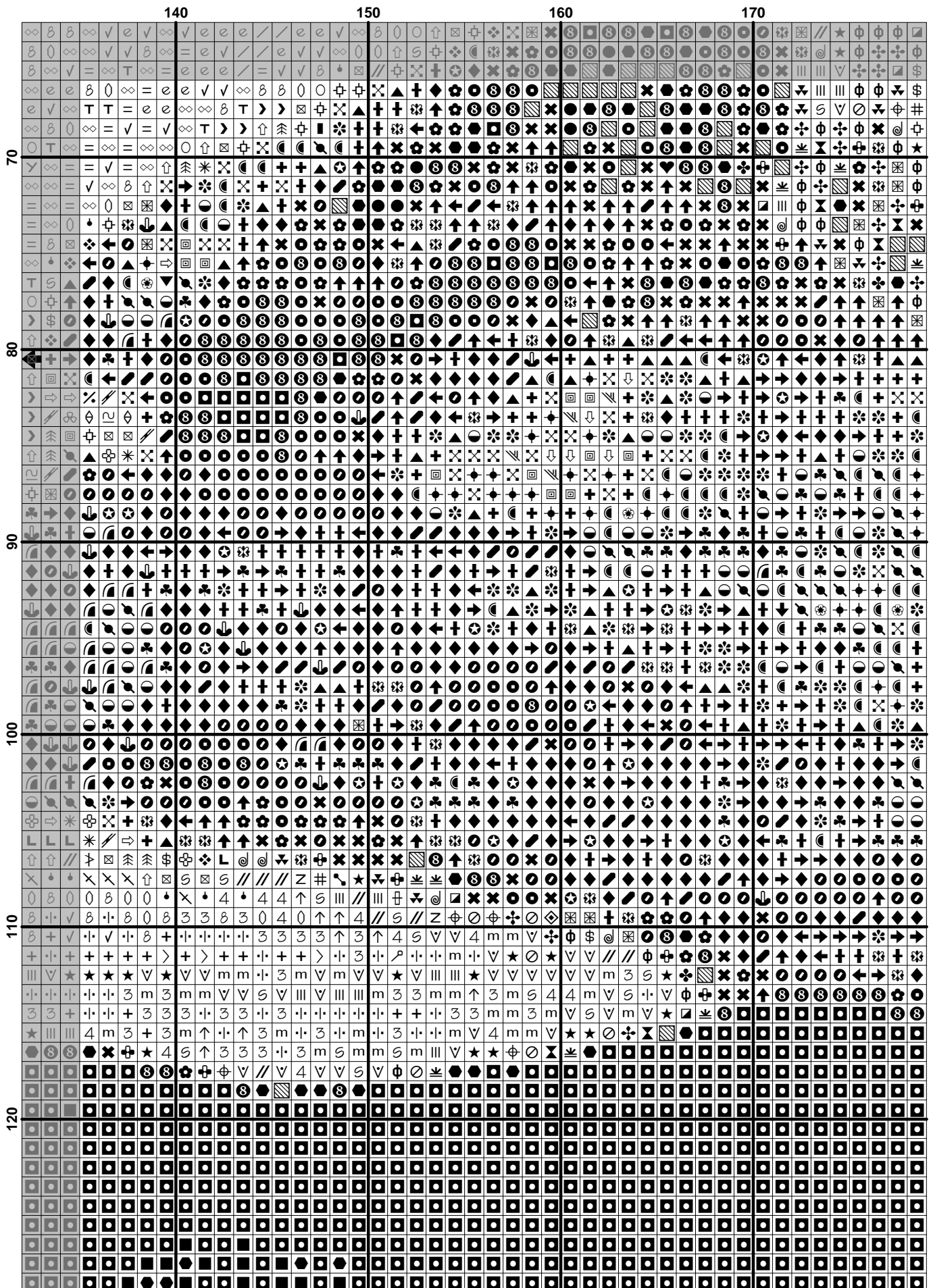


	180	190	200	210	220
10					
20					
30					
40					
50					
60					

[illegible]







[illegible]

