

Percy

Lace knitting has always fascinated me, and as soon as I got my hands on the famous stitch dictionary *Ptsilised Koekirjad* I knew I had to make a scarf.

Because the colour and stitches have a romantic feel to it, the pattern is named after one of my favourite poets: Percy Bysshe Shelley.

The scarf is not particularly difficult and the stitches flow intuitively, but the middle pattern requires some attention, because it is patterned on both RS and WS rows.

What you need to knit:

Any laceweight (or fingering yarn).
The scarf shown took about 350 m of Fyberspates Nef Lace in the colour Maple.

Circular needles in your preferred size.
The scarf shown was knit on a 3mm/60cm needle.
Gauge isn't crucial for this project.

Please be aware that adding repeats and/or using thicker yarn and bigger needles will increase the amount of yarn needed (and in a bigger scarf or shawl, obviously)!

The scarf shown measures about 120 cm across and about 52 cm from base to tip.

What you need to read:

Each chart is worked twice in each row, on either side of the center stitch. The pattern repeat is outlined with a bold line. With the exception of chart B, which is patterned on each side, all WS rows are purled and not charted.

Remember to always knit the three border stitches on either edge, slipping the first stitch of every row purlwise with the yarn in front very loosely.

This pattern is modular and can easily be increased in size. Just remember the following:

- Always work chart A a multiple of 4 times.
- Repeat chart B any number of times, but always start with row 5 and end with row 27.
- If you want bigger points on the edging, simply repeat rows 35 and 36 of the border chart a few more times.

If you run into any problems or errors, please contact me:
aBitofKnit at Ravelry, or abitofknit@gmail.com

This pattern is for personal use only.
Please do not use it for commercial purposes.

aBitofKnit

© 2009 Sanne K.
<http://abitofknit.blogspot.com>



Instructions

Using a provisional cast on, CO 3 stitches.
 Knit 17 rows, slipping the first stitch of every row purlwise with the yarn in the front.
 Turn the strip of knitting 90° and pick up and knit 7 stitches across. (1 stitch for every slipped stitch)

Undo the provisional CO and knit the three resulting live stitches (13 sts on needle)

Work row 1-18 of the set up chart. (49 sts)
 Work row 1-8 of chart A four times. (113 sts)
 Work row 5-31 of chart B once. (169 sts)
 Work row 0-27 of chart B once. (225 sts)
 Purl 1 row.
 Work row 1-36 of chart C once. (293 sts)

With two ends of yarn, BO all stitches loosely:
 P2, *slip stitches back to left needle, P2tog, P1*
 When you've only got one stitch left, pull both ends of yarn through.

Weave in ends & block fiercely.



Stitches

- K on RS / P on WS
- No stitch
- yarn over
- ∧ K2tog on RS / P2tog on WS
- λ SSK on RS / SSP on WS
- λ S1K2togPSSO (only occurs on RS rows)
- Nupp (K1,yo,K1,yo,K1yo,K1 into one stitch, purl these 7 sts together on the next row)

Set-up chart

○					○	λ	○								○	λ	○											○	
	○			○	λ		λ	○							○	λ		λ	○										○
			○	λ	○					○	λ				λ	○					○	λ	○						
				○	λ	○				○	λ	○									○	λ	○						
					○					○	λ	○									○	λ	○						
						○	λ	○							○	λ	○												
							○	λ	○						○	λ	○												
								○							○														

Chart A

○					○	λ	○									○	λ	○											○
	○			○	λ		λ	○								○	λ		λ	○									○
			○	λ	○					○	λ				λ	○					○	λ	○						
				○	λ	○				○	λ	○				λ	○				○	λ	○						

Chart B

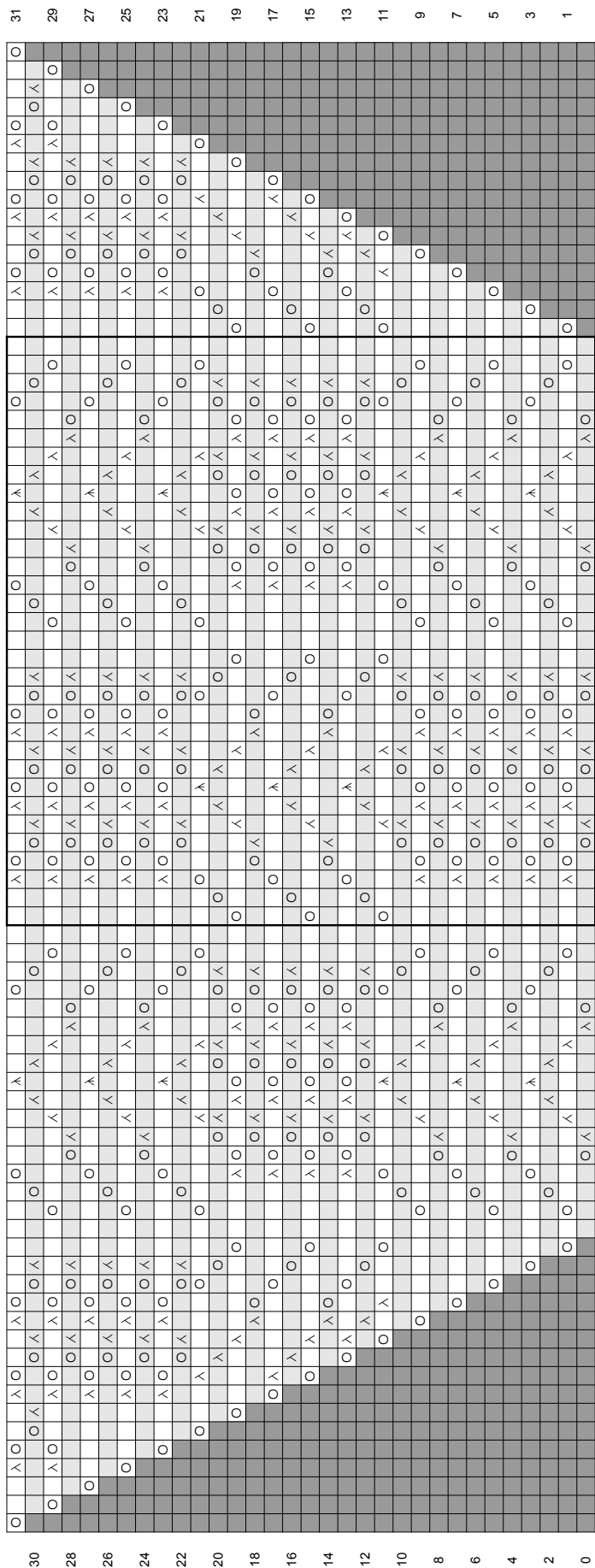


Chart C

