



Design 6 — Roody toy

Patons



It is important to check your tension before starting your garment. If there are too many stitches to 10 cm, your tension is tight and you should change to a larger size needle. If there are too few, your tension is loose and you should change to a smaller size needle.

Caution

It is essential to work to the stated tension, and we cannot accept responsibility for the finished product if any yarn other than the specified yarn is used.

Abbreviations

K=knit; **P**=purl; **st**=stitch; **stocking st**=1 row K, 1 row P; **garter st**=every row K; **tog**=together; **tbl**=through back of loops; **inc**=increase 1 st by working into front and back of st; **inc 2**=increase 2 sts by working into front, back and front of st; **dec**=decrease by working 2 sts together; **beg**=beginning; **alt**=alternate; **rep**=repeat; **cont**=continue; **meas**=measures; **fol**=following; **rem**=remain(ing); **cm**=centimetres; **in**=inches; **mm**= millimetres; **sL1K**=slip 1 knitways; **yfwd**=yarn forward; **pss**=pass slip st over; **patt**=pattern; **0**=no st, row or time to be worked in this size.

M1=make a st by picking up horizontal loop lying before next st and working into back of it.

M2=make 2 sts by picking up horizontal loop lying before next st and working into back and front of it.

MS=Main Shade

- 1st C=1st Contrast/Colour
- 2nd C=2nd Contrast/Colour
- 3rd C=3rd Contrast/Colour
- 4th C=4th Contrast/Colour
- 5th C=5th Contrast/Colour
- 6th C=6th Contrast/Colour
- 7th C=7th Contrast/Colour
- 8th C=8th Contrast/Colour
- 9th C=9th Contrast/Colour

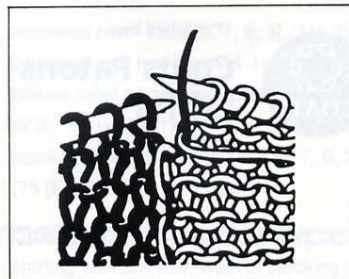
Instructions are given for the first size, with larger size(s) given in square brackets []. Where only one figure is given this applies to both (all) sizes.

Before starting to knit, read the instructions carefully and circle all figures relating to your size with a coloured pencil.

Note for Motif Knitting

We recommend Milward yarn bobs for tangle free motif knitting.

When working from chart, do not carry colours across wrong side of work, but

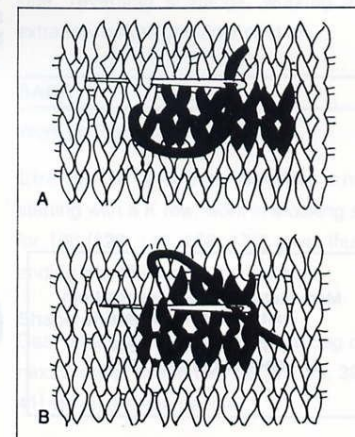


use separate balls as required, twisting yarns when changing colour to avoid a hole (see diagram).

Read odd rows K from right to left and even rows P from left to right.

Swiss Embroidery

Use a tapestry needle and appropriate colour. Bring needle up through centre of stitch from back of work, insert from right to left behind stitch immediately above (A) then down through centre of original stitch and out through centre of next stitch to left (B).



Design 6 Roody Toy

Height, approx
41 cm
16 in

Patons Knit 'n' Save DK

1st Colour (7719)
6 25 gram balls
2nd Colour (7813)
1 25 gram ball
3rd Colour (7789)
1 25 gram ball
4th Colour (7808)
1 25 gram ball
5th Colour (7814)
1 25 gram ball
6th Colour (7716)
1 25 gram ball
7th Colour (7799)
1 25 gram ball

Quantities of yarn are approximate as they are based on average requirements. Check actual yarn colour - as printing may not match yarn exactly.

Pair Milward 3 3/4 mm (UK 9) needles.
Good quality washable stuffing. 1 small toy bell.

Tension

23 sts and 31 rows to 10 cm (stocking st) on 3 3/4 mm needles or size needed to achieve stated tension.

For notes and abbreviations, see first pages of text.

SOLES OF FEET (make 4)

With 3 3/4 mm needles and 1st C, cast on 6 sts and K 1 row. **Noting** that next row is RS, work in garter st, shaping sides by inc 1 st at each end of next 4 rows (14 sts), then on every foll alt row until there are 22 sts.

Work 14 rows, thus ending with RS facing for next row. Dec 1 st at each end of next and every foll alt row until 12 sts rem,

then on every row until 6 sts rem, thus ending with RS facing. Cast off.

GUSSET

With 3 3/4 mm needles and 1st C, cast on 26 sts and starting with a K row, work in stocking st for 2 rows, thus ending with RS facing for next row.

Shape for rear legs thus:

Next row - Cast off 4 sts, K to end (22 sts).

Next row - Cast off 4 sts, P to end (18 sts).

**Cont in stocking st, shaping sides by dec 1 st at each end of next 3 rows, then on foll 2 alt rows (8 sts).

Work 9 rows, thus ending with RS facing for next row.

Inc 1 st at each end of next and foll 2 alt rows, then on every row until there are 20 sts, thus ending with RS facing for next row.**

Cast on 7 sts at beg of next 2 rows (34 sts).

Work 12 rows, thus ending with RS facing for next row.

Shape for front legs thus:

Cast off 8 sts at beg of next 2 rows (18 sts).

Work from ** to ** once more.

Cast on 3 sts at beg of next 2 rows (26 sts).

Chest

Break 1st C. Join in 2nd C and cont in stocking st for 30 rows, thus ending with RS facing. Cast off.

REAR LEFT LEG

**With 3 3/4 mm needles and 1st C, cast on 70 sts and starting with a K row, work in stocking st for 10 rows, thus ending with RS facing for next row.

Decrease row - K1, *K2tog, K4; rep from * to last 3 sts, K2tog, K1 (58 sts).**

Cont in stocking st for 12 rows, thus ending with WS facing for next row.

Next row - Cast off 33 sts, P to end (25 sts).

Leave rem sts on a spare needle.

FRONT LEFT LEG

Work as Rear Left Leg from ** to **.

Cont in stocking st for 11 rows, thus ending with RS facing for next row.

Next row - (RS), cast off 4 sts, K to end (54 sts).

Next row - Cast off 29 sts, P to end (25 sts).

Leave rem sts on a spare needle.

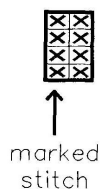
REAR RIGHT LEG

Work as Rear Left Leg from ** to **.

Cont in stocking st for 11 rows, thus ending with RS facing for next row.

Next row - Cast off 33 sts, K to end (25 sts).

CHART FOR EYE



Key

☒ = With 5th C used double, swiss embroider eyes

Next row - P.

Leave rem sts on a spare needle.

FRONT RIGHT LEG

Work as Rear Left Leg from ** to **.

Cont in stocking st for 11 rows, thus ending with RS facing for next row.

Next row - Cast off 29 sts, K to end (29 sts).

Next row - Cast off 4 sts, P to end (25 sts).

Leave rem sts on a spare needle.

BODY

Left Half

With RS facing, 3 3/4 mm needles and 1st C, cast on 13 sts, K25 from Rear Left Leg, cast on 10 sts, then K25 from Front Left Leg (73 sts).

Starting with a P row, work in stocking st for 5 rows, thus ending with RS facing for next row.

Cont in stocking st, shaping sides by dec 1 st at beg of next and foll 6th row, then on every foll 4th row until 68 sts rem. Work 1 row, thus ending with RS facing for next row.

Dec 1 st at beg of next and every alt row until 63 sts rem, thus ending with WS facing for next row.

Shape neck

Next row - (WS), cast off 6 sts, P to last 2 sts, P2togtbl (56 sts).

Next row - sL1K, K1, pssso, K54 (55 sts).

Next row - Cast off 4 sts, P to last 2 sts, P2togtbl (50 sts).

Next row - sL1K, K1, pssso, K48 (49 sts).

Cast off 2 sts at beg of next and every alt row, **at the same time** dec 1 st at end of next row and **at same edge** on every row until 34 sts rem, thus ending with RS facing for next row.

Next row - (RS), cast off 2 sts, K to end (32 sts).

Next row - P.

Cast off 6 sts at beg of next and foll alt row (20 sts).

Work 1 row, thus ending with RS facing. Cast off.

Right half

With RS facing, 3 3/4 mm needles and 1st C, K25 from Front Right Leg, cast on 10 sts, K25 from Rear Right Leg, then cast on 13 sts (73 sts).

Starting with a P row, work in stocking st for 5 rows, thus ending with RS facing for next row.

Cont in stocking st, shaping sides by dec 1 st at end of next and foll 6th row, then on every foll 4th row until 68 sts rem. Work 1 row, thus ending with RS facing for next row.

Dec 1 st at end of next and every alt row until 63 sts rem, thus ending with WS facing for next row.

Next row - P2tog, P61 (62 sts).

Shape neck

Next row - (RS), cast off 6 sts, K to last 2 sts, K2tog (55 sts).

Next row - P2tog, P53 (54 sts).

Next row - Cast off 4 sts, K to last 2 sts, K2tog (49 sts).

Next row - P2tog, P47 (48 sts).

Cast off 2 sts at beg of next and every alt row, **at the same time** dec 1 st at end of next row and **at same edge** on every row until 36 sts rem, thus ending with RS facing for next row.

Cast off 2 sts at beg of next 2 rows (32 sts).

Work 1 row, thus ending with WS facing for next row.

Cast off 6 sts at beg of next and foll alt row, thus ending with RS facing (20 sts). Cast off rem sts.

HEAD

Left half

With 3 3/4 mm needles and 1st C, cast on 11 sts. Place a marker in first cast-on st.

Starting with a K row, work in stocking st for 2 rows, thus ending with RS facing for next row.

Cont in stocking st and cast on 4 sts at beg of next row. Cast on 5 sts at beg of next row (20 sts).

Inc 1 st at each end of next 3 rows, thus ending with WS facing for next row (26 sts). Inc 1 st at end of next row (27 sts).

Inc 1 st at each end of next and every alt row until there are 33 sts. Work 1 row, thus ending with RS facing for next row.

Inc 1 st at beg of next and every alt row until there are 36 sts. Work 5 rows, thus ending with RS facing for next row.

Inc 1 st at end of next and foll 2 alt rows (39 sts). Work 1 row. Inc 1 st **at same edge** on every row until there are 43 sts, thus ending with RS facing for next row.

Work 1 row. Cast on 3 sts at beg of next row. Work 1 row. Cast on 4 sts at beg of next row (50 sts). Place a marker in last cast-on st of last row.

Work 4 rows, thus ending with RS facing for next row.

Place marker for left eye thus:

Next row - K6, place a marker in last st, K44.

Work 9 rows, thus ending with RS facing for next row.

Next row - (RS), K1, (K2tog, K2) 7 times, K21 (43 sts).

Next row - P.

Next row - K2, (K3tog) 5 times, (K1, K2tog) 8 times, K2 (25 sts).

Next row - P.

Break 1st C. Join in 3rd C.

Muzzle (Left Half)

Starting with a K row, work in stocking st for 16 rows, thus ending with RS facing for next row.

Next row - K1, *K2tog, K2; rep from * to end (19 sts).

Work 3 rows, thus ending with RS facing for next row.

Next row - *K1, (K2tog) twice; rep from * to last 4 sts, K1, K2tog, K1 (12 sts).

Work 3 rows, thus ending with RS facing for next row.

Next row - (K3tog) 4 times (4 sts). Break yarn, thread through rem sts, pull up tightly and fasten off securely.

Right Half

With 3 3/4 mm needles and 1st C, cast on 11 sts. Place a marker in last cast-on st.

Starting with a K row, work in stocking st for 2 rows, thus ending with RS facing for next row.

Cont in stocking st, cast on 5 sts at beg of next row. Cast on 4 sts at beg of next row (20 sts).

Inc 1 st at each end of next 3 rows, thus ending with WS facing for next row (26 sts). Inc 1 st at beg of next row (27 sts).

Inc 1 st at each end of next and every alt row until there are 33 sts. Work 1 row, thus ending with RS facing for next row.

Inc 1 st at end of next and every alt row until there are 36 sts. Work 5 rows, thus ending with RS facing for next row.

Inc 1 st at beg of next and foll 2 alt rows (39 sts). Work 1 row. Inc 1 st at **same edge** on every row until there are 43 sts, thus ending with RS facing for next row. Cast on 3 sts at beg of next row. Work 1 row. Cast on 4 sts at beg of next row (50 sts). Place a marker in last cast-on st of last row.

Work 5 rows, thus ending with RS facing for next row.

Place marker for right eye thus:

Next row - K46, place a marker in last st, K4.

Work 9 rows, thus ending with RS facing for next row.

Next row - (RS), K23, (K2tog, K2) 6 times, K2tog, K1 (43 sts).

Next row - P.

Next row - K2, (K2tog, K1) 8 times, (K3tog) 5 times, K2 (25 sts).

Next row - P.

Break 1st C. Join in 3rd C.

Muzzle (Right Half)

Work as Muzzle of Left Half.

ANTLERS**Left Front and Right Back (alike)**

With 3 3/4 mm needles and 4th C, cast on 9 sts and starting with a K row, work in stocking st for 6 rows, thus ending with RS facing for next row.

Row 7 - (RS), K7, inc in next st, K1 (10 sts).

Row 8 - Inc in first st, P9 (11 sts).

Row 9 - Inc in first st, K10 (12 sts).

Row 10 - Cast on 5 sts, P to last 2 sts, inc in next st, P1 (18 sts).

Row 11 - Cast on 6 sts, K to last 2 sts, inc in next st, K1 (25 sts).

Row 12 - P23, inc in next st, P1 (26 sts).

Row 13 - Inc in first st, K25 (27 sts).

Row 14 - P2tog, P23, inc in next st, P1 (27 sts).

Row 15 - Inc in first st, K24, K2tog (27 sts).

Row 16 - Cast off 6 sts, P to end (21 sts).

Row 17 - sL1K, K1, pssso, K17, K2tog (19 sts).

Row 18 - P17, P2togtbl (18 sts).

Row 19 - Cast off 8 sts, K to end (10 sts).

Row 20 - Cast on 5 sts, P to end (15 sts).

Row 21 - Inc in first st, K12, inc in next st, K1 (17 sts).

Row 22 - Inc in first st, P16 (18 sts).

Row 23 - Inc in first st, K15, inc in next st, K1 (20 sts).

Row 24 - P.

Row 25 - K9, turn and work on these 9 sts **only**.

Row 26 - P2tog, P7 (8 sts).

Row 27 - K8.

Row 28 - P2tog, P4, P2togtbl (6 sts). Cast off.

With RS facing, rejoin 4th C to rem sts, cast off 4 sts, K to end (7 sts).

Next row - P2tog, P3, P2togtbl (5 sts). Cast off.

Right Front and Left Back (alike)

With 3 3/4 mm needles and 4th C, cast on 9 sts and starting with a K row, work in stocking st for 5 rows, thus ending with WS facing for next row.

Row 6 - (WS), P7, inc in next st, P1 (10 sts).

Row 7 - Inc in first st, K9 (11 sts).

Row 8 - Inc in first st, P10 (12 sts).

Row 9 - Cast on 5 sts, K to last 2 sts, inc in next st, K1 (18 sts).

Row 10 - Cast on 6 sts, P to last 2 sts, inc in next st, P1 (25 sts).

Row 11 - K23, inc in next st, K1 (26 sts).

Row 12 - Inc in first st, P25 (27 sts).

Row 13 - sL1K, K1, pssso, K23, inc in next st, K1 (27 sts).

Row 14 - Inc in first st, P24, P2togtbl (27 sts).

Row 15 - Cast off 6 sts, K to end (21 sts).

Row 16 - P2tog, P17, P2togtbl (19 sts).

Row 17 - K17, K2tog (18 sts).

Row 18 - Cast off 8 sts, P to end (10 sts).

Row 19 - Cast on 5 sts, K to end (15 sts).

Row 20 - Inc in first st, P12, inc in next st, P1 (17 sts).

Row 21 - Inc in first st, K16 (18 sts).

Row 22 - Inc in first st, P15, inc in next st, P1 (20 sts).

Row 23 - K.

Row 24 - P9, turn and work on these 9 sts **only**.

Row 25 - sL1K, K1, pssso, K7 (8 sts).

Row 26 - P8.

Row 27 - sL1K, K1, pssso, K4, K2tog (6 sts).

Row 28 - P.

Cast off.

With WS facing, rejoin 4th C to rem sts, cast off 4 sts, P to end (7 sts).

Next row - sL1K, K1, pssso, K3, K2tog (5 sts).

Next row - P.

Cast off.

TAIL

With 3 ³/₄ mm needles and 2nd C, cast on 20 sts and starting with a K row, work in stocking st for 6 rows, thus ending with RS facing for next row.

Cont in stocking st, shaping sides by dec 1 st at each end of next and foll 2 alt rows, thus ending with WS facing for next row (14 sts). Dec 1 st at each end of next row (12 sts). Cast off.

MAKE UP

Do not press.

In 2nd C, make a fringe over chest and tail as in photograph, trim to 3 cm length and fray ends.

With **5th C used double**, using chart and markers as a guide, swiss embroider eyes on each half of head.

With **5th C used double**, embroider straight stitches around lower edge of each leg, making each straight stitch 4

rows deep and leaving 5 knitted stitches between each straight stitch, as in photograph.

Join back seam of each leg. Sew soles of feet to cast-on edge of legs.

Sew cast-off edge of each leg around curved leg shapings of gusset. Join cast-on edge of gusset to cast-on sts at rear end of body. Join straight side edges of gusset to second set of cast-on sts of body.

Join side edges of chest to unshaped side edges of body.

Sew shaped edges of head between markers around neck shaping in body, matching first markers to top edge of each side of body and matching second markers to centre of cast-off edge of chest. Join head and muzzle seams.

With 5th C, embroider mouth in stem stitch on front of Muzzle, as in photograph.

Join back seam, leaving an opening for stuffing. Stuff toy and close opening.

In 3rd C, sew a running stitch around first row of muzzle, pull in slightly and fasten off.

Join seams of antlers. Stuff antlers. Sew cast-on edge of each antler to top of sides of head, as in photograph.

Join side edges of tail. Stuff Tail, then sew cast-on edge to rear of body, as in photograph.

Ears (make 4 pieces)

With 3 ³/₄ mm needles and 1st C, cast on 12 sts and starting with a K row, work in stocking st for 12 rows, thus ending with RS facing for next row.

Cont in stocking st, shaping sides by dec 1 st at each end of next and foll 2 alt rows, thus ending with WS facing for next row (6 sts).

Dec 1 st at each end of next row (4 sts). Cast off.

Join seams of 2 pieces for each ear. Catch together sides seams of each ear

at cast-on edge, then sew ears to sides of head, below antlers, as in photograph.

Nose

In 6th C, make a tight pompon 3 cm in diameter.

With **5th C used double**, make a twisted cord 44 cm long. Sew ends of cord to Nose. Sew Nose to top of Muzzle, as in photograph, then secure cord around head, attaching cord securely at back of head, behind antlers.

Bell

With 3 ³/₄ mm needles and 7th C, cast on 4 sts and P 1 row.

Next row - (RS), K, inc in every st to end (8 sts).

Next row - Inc in first st, P2, inc in each of next 2 sts, P2, inc in next st (12 sts).

Next row - Inc in first st, K4, inc in each of next 2 sts, K4, inc in next st (16 sts).

Next row - Inc in first st, P6, inc in each of next 2 sts, P6, inc in next st (20 sts).

Starting with a K row, work in stocking st for 6 rows, thus ending with RS facing for next row.

Next row - (RS), sL1K, K1, pssso, K6, sL1K, K1, pssso, K2tog, K6, K2tog (16 sts).

Next row - P2tog, P4, P2tog, P2togtbl, P4, P2togtbl (12 sts).

Next row - sL1K, K1, pssso, K2, sL1K, K1, pssso, K2tog, K2, K2tog (8 sts).

Next row - (P2tog) twice, (P2togtbl) twice (4 sts).

Cast off.

Fold Bell in half lengthways and join seam, leaving an opening for stuffing. Place toy bell inside knitted bell and stuff lightly around it. Close opening **securely**.

With **7th C used double**, make a twisted cord 44 cm long. Sew ends of cord to Bell. Place around neck of toy, attaching securely to back of neck.