

Patons® KROY SOCKS



Patons® Kroy Socks
HEIRLOOM SHAWL
(TO KNIT)

One Size

66 ins [167.5 cm] wide x 36 ins [91.5 cm] deep.

Materials

Patons® Kroy Socks (50 g / 1.75 oz)
(54008 – Muslin) **8 balls**

Size 3¼ mm (U.S. 5) knitting needles. 3¼ mm (U.S. 3) and 3¾ mm (U.S. 5) circular knitting needle 36 ins [90 cm] long **or size needed to obtain tension.**

Tension

26 sts and 34 rows = 4 ins [10 cm] in stocking st.

Stitch Glossary

K1B = knit into back of next st.

P1B = purl into back of next st.

Instructions

The design is written in 2 versions. **Version I is worked by following written instructions only. Version II is worked by following Charts accompanied by written instructions.**

Version I (Work from written instructions only)

With pair of needles, cast on 9 sts.

Proceed as follows, noting that work will be moved onto larger circular needle when pair of needles is no longer sufficient to accommodate sts.

Work Panel I as follows:

1st row: (RS). K4. (K1. yfwd. K1) all in next st. K4. 11 sts.

2nd and alt rows: Purl. (place marker on center st).

3rd row: K1B. P2. K1B. [(K1. yfwd. K1) in next st] 3 times. K1B. P2. K1B. 17 sts.

5th row: K1B. P2. K1B. Inc 1 st in next st. [(K1. yfwd. K1) in next st] 7 times. Inc 1 st in next st. K1B. P2. K1B.

7th row: K1B. P2. [K1B. yfwd. K4. K2tog. (yfwd) twice. Sl1. K1. pssso. K4. yfwd] twice. K1B. P2. K1B.

9th row: K1B. P2. *K1B. yfwd. K3. [K2tog. (yfwd) twice. Sl1. K1. pssso] twice. K3. yfwd. Rep from * once more. K1B. P2. K1B.

11th row: K1B. P2. *K1B. yfwd. K2. [K2tog. (yfwd) twice. Sl1. K1. pssso] 3 times. K2. yfwd. Rep from * once more. K1B. P2. K1B.

13th row: K1B. P2. *K1B. yfwd. K1. [K2tog. (yfwd) twice. Sl1. K1. pssso] 4 times. K1. yfwd. Rep from * once more. K1B. P2. K1B.

15th row: K1B. P2. *K1B. K4. [K2tog. (yfwd) twice. Sl1. K1. pssso] 3 times. K4. Rep from * once more. K1B. P2. K1B.

17th row: K1B. P2. *K1B. K2. [K2tog. (yfwd) twice. Sl1. K1. pssso] 4 times. K2. Rep from * once more. K1B. P2. K1B.

19th row: K1B. P2. *K1B. (yfwd. Sl1. K1. pssso) twice. [K2tog. (yfwd) twice. Sl1. K1. pssso] 3 times. (K2tog. yfwd) twice. Rep from * once more. K1B. P2. K1B.

21st row: K1B. P2. *(K1B. yfwd) twice. Sl1. K2tog. pssso. (yfwd. Sl1. K1. pssso. K2tog. yfwd) 3 times. Sl1. K2tog. pssso. yfwd. K1B. yfwd. Rep from * once more. K1B. P2. K1B.

23rd row: K1B. P2. *(K1B. yfwd) 4 times. Sl1. K2tog. pssso. (yfwd. Sl1. K1. pssso. K2tog. yfwd) twice. Sl1. K2tog. pssso. (yfwd. K1B) 3 times. yfwd. Rep from * once more. K1B. P2. K1B.

25th row: K1B. P2. *K1B. yfwd. (K1B. yfwd. K2. yfwd) twice. K1B. yfwd. Sl1. K2tog. pssso. yfwd. Sl1. K1. pssso. K2tog. yfwd. Sl1. K2tog. pssso. (yfwd. K1B. yfwd. K2) twice. yfwd. K1B. yfwd. Rep from * once more. K1B. P2. K1B.

27th row: K1B. P2. K1B. K1. *yfwd. K1B. yfwd. K1. Sl1. K1. pssso. K1. yfwd. K1B. yfwd. K1. K2tog. K1. yfwd. K1B. yfwd. K1.* Sl1. K2tog. pssso. (yfwd) twice. Sl1. K2tog. pssso. K1. Rep from * to * once more. K2tog. Rep from * to * once more. Sl1. K2tog. pssso. (yfwd) twice. Sl1. K2tog. pssso. K1. Rep from * to * once more. K1B. P2. K1B.

29th row: K1B. P2. K1B. *K2. yfwd. K1B. yfwd. K2. Sl1. K1. pssso. K1. yfwd. K1B. yfwd. K1. K2tog. K2. yfwd. K1B. yfwd. (Sl1. K1. pssso. K2tog) twice. yfwd. K1B. yfwd. K2. Sl1. K1. pssso. K1. yfwd. K1B. yfwd. K1. K2tog. K2. yfwd. K1B. yfwd. K2. Rep from * once more. K1B. P2. K1B.

31st row: K1B. P2. K1B. (Sl1. K1. pssso. K1. yfwd. K1B. yfwd. K1. K2tog) 12 times. K1B. P2. K1B.

33rd, 35th and 37th rows: As 31st row.

39th row: K1B. P2. K1B. *yfwd. Sl1. K1. pssso. K3. K2tog. yfwd. Sl1. K1. pssso. K1. yfwd. K1B. yfwd. K1. K2tog. yfwd. (Sl1. K1. pssso. K3. K2tog) twice. yfwd. Sl1. K1. pssso. K1. yfwd. K1B. yfwd. K1. K2tog. yfwd. Sl1. K1. pssso. K3. K2tog. Rep from * once more. yfwd. K1B. P2. K1B.

41st row: K1B. P2. K1B. *yfwd. K1. yfwd. Sl1. K1. pssso. K1. K2tog. yfwd. K1. yfwd. Sl1. K1. pssso. K1. yfwd. K1B. yfwd. K1. K2tog. yfwd. K1. yfwd. (Sl1. K1. pssso. K1. K2tog) twice. yfwd. K1. yfwd. Sl1. K1. pssso. K1. yfwd. K1B. yfwd. K1. K2tog. yfwd. K1. yfwd. Sl1. K1. pssso. K1. K2tog. Rep from * once more. yfwd. K1. yfwd. K1B. P2. K1B.

43rd row: K1B. P2. K1B. *yfwd. K3. yfwd. Sl1. K2tog. pssso. yfwd. K1. Sl1. K1. pssso. yfwd. Sl1. K1. pssso. K1. yfwd. K1B. yfwd. K1. K2tog. yfwd. K2tog. K1. yfwd. (Sl1. K2tog. pssso) twice. yfwd. K1. Sl1. K1. pssso. yfwd. Sl1. K1. pssso. K1. yfwd. K1B. yfwd. K1. K2tog. yfwd. K2tog. K1. yfwd. Sl1. K2tog. pssso. Rep from * once more. yfwd. K3. yfwd. K1B. P2. K1B.



Patons®

... a part of your life.

P.O. Box 40 Listowel ON N4W 3H3

45th row: K1B. P2. K1B. yfwd. [K2tog. (yfwd) twice. Sl1. K1. pss0] twice. K2tog. yfwd. *Sl1. K1. pss0. K1. yfwd. K1B. yfwd. K1. K2tog. yfwd. Sl1. K1. pss0. K1. (yfwd) twice. Sl1. K1. pss0. K2tog. (yfwd) twice. K1. K2tog. yfwd. Sl1. K1. pss0. K1. yfwd. K1B. yfwd. K1. K2tog.* yfwd. K1. K2tog. (yfwd) twice. Sl1. K1. pss0. K2tog. (yfwd) twice. Sl1. K2tog. pss0. K2tog. (yfwd) twice. Sl1. K1. pss0. K1. yfwd. Rep from * to * once more. yfwd. Sl1. K1. pss0. [K2tog. (yfwd) twice. Sl1. K1. pss0] twice. yfwd. K1B. P2. K1B.

47th row: K1B. P2. K1B. yfwd. K1. (yfwd. Sl1. K1. pss0. K2tog. yfwd) twice. K2. *yfwd. Sl1. K1. pss0. K1. yfwd. K1B. yfwd. K1. (K2tog. yfwd) twice. (yfwd. Sl1. K1. pss0. K2tog. yfwd) twice. (yfwd. Sl1. K1. pss0.) twice. K1. yfwd. K1B. yfwd. K1. K2tog. yfwd. K2.* [Sl1. K1. pss0. K2tog. (yfwd) twice] twice. Sl1. K1. pss0. K2tog. K2. Rep from * to * once more. (yfwd. Sl1. K1. pss0. K2tog. yfwd) twice. K1. yfwd. K1B. P2. K1B.

49th row: K1B. P2. K1B. yfwd. K2. *[K2tog. (yfwd) twice. Sl1. K1. pss0] twice. K3. yfwd. Sl1. K1. pss0. K3. K2tog. yfwd.* K3. Rep from * to * once more. K2. [K2tog. (yfwd) twice. Sl1. K1. pss0] 3 times. K2. yfwd. Sl1. K1. pss0. K3. K2tog. yfwd. K3. Rep from * to * once more. K3. [K2tog. (yfwd) twice. Sl1. K1. pss0] twice. K2. yfwd. K1B. P2. K1B.

51st row: K1B. P2. K1B. yfwd. K1. *[K2tog. (yfwd) twice. Sl1. K1. pss0] 3 times. K2. yfwd. Sl1. K1. pss0. K1. K2tog. yfwd.* K2. Rep from * to * once more. K1. [K2tog. (yfwd) twice. Sl1. K1. pss0] 4 times. K1. yfwd. Sl1. K1. pss0. K1. K2tog. yfwd. K2. Rep from * to * once more. K2. [K2tog. (yfwd) twice. Sl1. K1. pss0] 3 times. K1. yfwd. K1B. P2. K1B.

53rd row: K1B. P2. K1B. yfwd. *[K2tog. (yfwd) twice. Sl1. K1. pss0] 4 times. K1. yfwd. Sl1. K2tog. pss0. yfwd.* K1. Rep from * to * once more. [K2tog. (yfwd) twice. Sl1. K1. pss0] 5 times. yfwd. Sl1. K2tog. pss0. yfwd. K1. Rep from * to * once more. K1. [K2tog. (yfwd) twice. Sl1. K1. pss0] 4 times. yfwd. K1B. P2. K1B.

55th row: K1B. P2. K1B. K1. (yfwd) twice. Sl1. K1. pss0. K2tog. (yfwd) twice. Sl1. K1. pss0. K4. [K2tog. (yfwd) twice. Sl1. K1. pss0] twice. Sl1. K2tog. pss0. (yfwd) twice. Sl1. K1. pss0. K2tog. (yfwd) twice. Sl1. K1. pss0. K4. [K2tog. (yfwd) twice. Sl1. K1. pss0] 4 times. K2tog. K4. [Sl1. K1. pss0. K2tog. (yfwd) twice.] 4 times. Sl1. K1. pss0. K4. K2tog. (yfwd) twice. Sl1. K1. pss0. K2tog. (yfwd) twice. Sl1. K2tog. pss0. [K2tog. (yfwd) twice. Sl1. K1. pss0] twice. K4. K2tog. (yfwd) twice. Sl1. K1. pss0. K2tog. (yfwd) twice. K1. K1B. P2. K1B.

56th row: Purl.

Work Panel II as follows:

1st row: (RS). K1B. P2. K1B. yfwd. Sl1. K1. pss0. K2tog. (yfwd) twice. Sl1. K1. pss0. K2. K2tog. *(yfwd) twice. Sl1. K1. pss0. K2. [K2tog. (yfwd) twice. Sl1. K1. pss0] 3 times. K2. K2tog.* (yfwd) twice. Sl1. K1. pss0. K2. [K2tog. (yfwd) twice. Sl1. K1. pss0] 3 times. K2. Sl1. K2tog. pss0. (yfwd) twice. Sl1. K2tog. pss0. K2. [K2tog. (yfwd) twice. Sl1. K1. pss0] 3 times. K2. K2tog. Rep from * to * once more. (yfwd) twice. Sl1. K1. pss0. K2. K2tog. (yfwd) twice. Sl1. K1. pss0. K2tog. yfwd. K1B. P2. K1B.

2nd and alt rows: Purl.

3rd row: K1B. P2. K1B. K2tog. (yfwd) twice. Sl1. K1. pss0. K2tog. yfwd. K1. K2tog. *yfwd. K2. yfwd. Sl1. K1. pss0. K1.** (yfwd. Sl1. K1. pss0. K2tog. yfwd) 3 times. K1. K2tog. Rep from * 3 times more, then from * to ** once. yfwd. Sl1. K1. pss0. K2tog. (yfwd) twice. Sl1. K1. pss0. K1B. P2. K1B.

5th row: K1B. P2. K1B. yfwd. Sl1. K1. pss0. K2tog. yfwd. K2. K2tog. *yfwd. K4. yfwd. Sl1. K1. pss0. K2.** (yfwd. Sl1. K1. pss0. K2tog. yfwd) twice. K2. K2tog. Rep from * 3 times more, then from * to ** once. yfwd. Sl1. K1. pss0. K2tog. yfwd. K1B. P2. K1B.

7th row: K1B. P2. K1B. K2tog. (yfwd) twice. Sl1. K1. pss0. K1. K2tog. *yfwd. K1. yfwd. K4. yfwd. K1. yfwd. Sl1. K1. pss0. K1.** [K2tog. (yfwd) twice. Sl1. K1. pss0] twice. K1. K2tog. Rep from * 3 times more, then from * to ** once. K2tog. (yfwd) twice. Sl1. K1. pss0. K1B. P2. K1B.

9th row: K1B. P2. K1B. yfwd. Sl1. K1. pss0. K2. *(K2tog. yfwd. K3. yfwd. Sl1. K1. pss0) twice. K2. K2tog.** (yfwd) twice. Sl1. K1. pss0. K2. Rep from * 3 times more, then from * to ** once. yfwd. K1B. P2. K1B.

11th row: K1B. P2. K1B. *(K2tog. yfwd. K1) twice. K4. yfwd. Sl1. K1. pss0. yfwd. K4. (K1. yfwd. Sl1. K1. pss0) twice. Rep from * 4 times more. K1B. P2. K1B.

13th row: K1B. P2. K1B. *K2. K2tog. yfwd. K1. yfwd. Sl1. K1. pss0. K1. K2tog. yfwd. K3. yfwd. Sl1. K1. pss0. K1. K2tog. yfwd. K1. yfwd. Sl1. K1. pss0. K2. Rep from * 4 times more. K1B. P2. K1B.

15th row: K1B. P2. K1B. *Sl1. K2tog. pss0. yfwd. K3. yfwd. Sl1. K2tog. pss0. yfwd. K5. yfwd. Sl1. K2tog. pss0. yfwd. K3. yfwd. Sl1. K2tog. pss0. Rep from * 4 times more. K1B. P2. K1B.

17th row: K1B. P2. K1B. yfwd. K1. yfwd. *K5. yfwd. K9. yfwd. K5. yfwd.** K2tog. yfwd. Rep from * 3 times more, then from * to ** once. K1. yfwd. K1B. P2. K1B.

19th row: K1B. P2. K1B. yfwd. *K3. yfwd. Sl1. K1. pss0. K1. K2tog. yfwd. K11. yfwd. Sl1. K1. pss0. K1. K2tog. yfwd. Rep from * 4 times more. K3. yfwd. K1B. P2. K1B.

21st row: K1B. P2. K1B. yfwd. *K5. yfwd. Sl1. K2tog. pss0. yfwd. K5. K2tog. yfwd. K6. yfwd. Sl1. K2tog. pss0. yfwd. Rep from * 4 times more. K5. yfwd. K1B. P2. K1B.

22nd row: Purl.

Work Panel III as follows:

1st row: (RS). K1B. P2. K1B. Inc 1 st in next st. yfwd. Sl1. K1. pss0. *K1. K2tog. yfwd. K7. K2tog. yfwd. K1B. yfwd. Sl1. K1. pss0. K7. yfwd. Sl1. K1. pss0. Rep from * 4 times more. K1. K2tog. yfwd. Inc 1 st in next st. K1B. P2. K1B.

2nd and alt rows: Purl.

3rd row: K1B. P2. K1B. yfwd. K3. *yfwd. Sl1. K2tog. pss0. yfwd. K6. Sl1. K2tog. pss0. yfwd. K1. yfwd. K1B. yfwd. K1. yfwd. Sl1. K2tog. pss0. K6. Rep from * 4 times more. yfwd. Sl1. K2tog. pss0. yfwd. K3. yfwd. K1B. P2. K1B.

5th row: K1B. P2. K1B. yfwd. K1. yfwd. K9. *K1. Sl1. K2tog. pss0. yfwd. K3. yfwd. K1B. yfwd. K3. yfwd. Sl1. K2tog. pss0. K10. Rep from * 4 times more. yfwd. K1. yfwd. K1B. P2. K1B.

7th row: K1B. P2. K1B. yfwd. K3. yfwd. K1. *K7. Sl1. K2tog. pss0. yfwd. K2tog. yfwd. K1B. yfwd.** Sl1. K1. pss0. yfwd. K1B. yfwd. K2tog. yfwd. K1B. yfwd. Sl1. K1. pss0. yfwd. Sl1. K2tog. pss0.* Rep from * to * once more, then from * to ** once more. K2. yfwd. K1B. yfwd. K2. yfwd. K1B. yfwd. Sl1. K1. pss0. yfwd. Sl1. K2tog. pss0. Rep from * to * twice more. K8. yfwd. K3. yfwd. K1B. P2. K1B.

9th row: K1B. P2. K1B. yfwd. K2. yfwd. K1B. yfwd. K2. yfwd. Sl1. K1. pss0. K1. *K3. Sl1. K2tog. pss0. yfwd. K2tog. K1. yfwd. K1B. yfwd.** K1. Sl1. K1. pss0. yfwd. K1B. yfwd. K2tog. K1. yfwd. K1B. yfwd. K1. Sl1. K1. pss0. yfwd. Sl1. K2tog. pss0.* Rep from * to * once more, then from * to ** once. K3. yfwd. K1B. yfwd. K3. yfwd. K1B. yfwd. K1. Sl1. K1. pss0. yfwd. Sl1. K2tog. pss0. Rep from * to * twice more. K4. K2tog. yfwd. K2. yfwd. K1B. yfwd. K2. yfwd. K1B. P2. K1B.

11th row: K1B. P2. K1B. yfwd. K4. yfwd. K1B. yfwd. K2. Sl1. K1. pss0. yfwd. Sl1. K1. pss0. K1. Sl1. K2tog. pss0. *yfwd. K2tog. K2.** yfwd. K1B. yfwd. K2. Sl1. K1. pss0. yfwd. K1B. yfwd. K2tog. K2. yfwd. K1B. yfwd. K1. Sl1. K1. pss0. yfwd. Sl1. K1. pss0. K1. K2tog. Rep from * once more, then from * to ** once. (yfwd. K1B. yfwd. K4) twice. *** yfwd. K1B. yfwd. K2. Sl1. K1. pss0. yfwd.**** Sl1. K1. pss0. K1. K2tog. yfwd. K2tog. K2. yfwd. K1B. yfwd. K2. Sl1. K1.

psso. yfwd. K1B. yfwd. K2tog. K2. Rep from *** once more, then from *** to **** once. Sl1. K2tog. psso. K1. K2tog. yfwd. K2tog. K2. yfwd. K1B. yfwd. K4. yfwd. K1B. P2. K1B.

13th row: K1B. P2. K1B. yfwd. K1B. *yfwd. K2tog. K3. yfwd. K1B. yfwd. K3. Sl1. K1. psso. yfwd. Sl1. K2tog. psso. yfwd. K2tog. K3. yfwd. K1B. yfwd. K3. Sl1. K1. psso. yfwd. K1B.* Rep from * to * twice more. (yfwd. K1B) twice. Rep from * to * 3 times more. yfwd. K1B. P2. K1B.

14th row: Purl.

Work panel IV as follows:

1st row: (RS). K1B. P2. (K1B. yfwd) twice. *(K1B. yfwd) twice. Sl1. K1. psso. K8. Sl1. K2tog. psso. (yfwd) twice. Sl1. K1. psso. K8. K2tog. yfwd. K1B. yfwd.* Rep from * to * twice more. (K1B. yfwd) 4 times. **(K1B. yfwd) twice. Sl1. K1. psso. K8. K2tog. (yfwd) twice. Sl1. K2tog. psso. K8. K2tog. yfwd. K1B. yfwd.** Rep from ** to ** twice more. (K1B. yfwd) twice. K1B. P2. K1B.

2nd and alt rows: Purl.

3rd row: K1B. P2. K1B. K3. yfwd. *K1B. yfwd. K3. yfwd. Sl1. K1. psso. K5. Sl1. K2tog. psso. yfwd. K2. yfwd. Sl1. K2tog. psso. K5. K2tog. yfwd. K3. yfwd.* Rep from * to * twice more. K1B. yfwd. K3. K1B. K3. yfwd. Rep from * to * 3 times. K1B. yfwd. K3. K1B. P2. K1B.

5th row: K1B. P2. K1B. [K1. yfwd. K1B. yfwd. Sl1. K1. psso. yfwd. *K1B. yfwd. K2tog. yfwd. K1B. (yfwd. Sl1. K1. psso) twice. K3. K2tog. yfwd. Sl1. K1. psso. K2tog. yfwd. Sl1. K1. psso. K3. (K2tog. yfwd) twice. K1B. yfwd. Sl1. K1. psso. yfwd. Rep from * twice more. K1B. yfwd. K2tog. yfwd. K1B. yfwd. K1. K1B] twice. P2. K1B.

7th row: K1B. P2. K1B. [K2. yfwd. K1B. yfwd. K1. Sl1. K1. psso. yfwd. *K1B. yfwd. K2tog. K1. yfwd. K1B. yfwd. K1. Sl1. K1. psso. yfwd. Sl1. K1. psso. K1. K2tog. yfwd. Sl1. K1. psso. K2tog. yfwd. Sl1. K1. psso. K1. K2tog. yfwd. K1. yfwd. K1B. yfwd. K1. Sl1. K1. psso. yfwd. Rep from * twice more. K1B. yfwd. K2tog. K1. yfwd. K1B. yfwd. K2. K1B] twice. P2. K1B.

9th row: K1B. P2. K1B. [K3. yfwd. K1B. yfwd. K2. Sl1. K1. psso. yfwd. *K1B. yfwd. K2tog. K2. yfwd. K1B. yfwd. K2. Sl1. K1. psso. yfwd. Sl1. K2tog. psso. yfwd. Sl1. K1. psso. K2tog. yfwd. Sl1. K2tog. psso. yfwd. K2tog. K2. yfwd. K1B. yfwd. K2. Sl1. K1. psso. yfwd. Rep from * twice more. K1B. yfwd. K2tog. K2. yfwd. K1B. yfwd. K3. K1B] twice. P2. K1B.

11th row: K1B. P2. K1B. [K4. yfwd. K1B. yfwd. K3. Sl1. K1. psso. yfwd. *K1B. yfwd.

K2tog. K3. yfwd. K1B. yfwd. K3. Sl1. K1. psso. yfwd. (Sl1. K2tog. psso) twice. yfwd. K2tog. K3. yfwd. K1B. yfwd. K3. Sl1. K1. psso. yfwd. Rep from * twice more. K1B. yfwd. K2tog. K3. yfwd. K1B. yfwd. K4. K1B] twice. P2. K1B.

12th row: Purl.

Work panel V as follows:

1st row: (RS). K1B. P2. K1B. [yfwd. Sl1. K1. psso. K7. yfwd. K1. yfwd. *K1B. yfwd. K1. yfwd. Sl1. K1. psso. K8. Sl1. K2tog. psso. (yfwd) twice. Sl1. K2tog. psso. K8. K2tog. yfwd. K1. yfwd. Rep from * twice more. K1B. yfwd. K1. yfwd. Sl1. K1. psso. K7. K2tog. yfwd. K1B] twice. P2. K1B.

2nd and alt rows: Purl.

3rd row: K1B. P2. K1B. [yfwd. K1. yfwd. Sl1. K1. psso. K5. K2tog. yfwd. K3. yfwd. *K1B. yfwd. K3. yfwd. Sl1. K1. psso. K5. Sl1. K2tog. psso. yfwd. K2. yfwd. Sl1. K2tog. psso. K5. K2tog. yfwd. K3. yfwd. Rep from * twice more. K1B. yfwd. K3. yfwd. Sl1. K1. psso. K5. K2tog. yfwd. K1. yfwd. K1B] twice. P2. K1B.

5th row: K1B. P2. K1B. [yfwd. K1. K2tog. yfwd. Sl1. K1. psso. K3. (K2tog. yfwd) twice. K1B. yfwd. Sl1. K1. psso. yfwd. *K1B. yfwd. K2tog. yfwd. K1B. yfwd. Sl1. K1. psso. yfwd. Sl1. K1. psso. K3. K2tog. yfwd. Sl1. K1. psso. ** K2tog. yfwd. Sl1. K1. psso. K3. K2tog. yfwd. K2tog. yfwd. K1B. yfwd. Sl1. K1. psso. yfwd. Rep from * twice more, then from * to ** once more. K1. yfwd. K1B] twice. P2. K1B.

7th row: K1B. P2. K1B. [yfwd. K1. Sl1. K2tog. psso. yfwd. Sl1. K1. psso. K1. K2tog. yfwd. K2tog. K1. yfwd. K1B. yfwd. K1. Sl1. K1. psso. yfwd. *K1B. yfwd. K2tog. K1. yfwd. K1B. yfwd. K1. Sl1. K1. psso. yfwd. Sl1. K1. psso. K1. K2tog. yfwd. ** Sl1. K1. psso. K2tog. yfwd. Sl1. K1. psso. K1. K2tog. yfwd. K2tog. K1. yfwd. K1B. yfwd. K1. Sl1. K1. psso. yfwd. Rep from * twice more, then from * to ** once more. Sl1. K2tog. psso. K1. yfwd. K1B] twice. P2. K1B.

9th row: K1B. P2. K1B. [yfwd. K1. Sl1. K2tog. psso. yfwd. Sl1. K2tog. psso. yfwd. K2tog. K2. yfwd. K1B. yfwd. K2. Sl1. K1. psso. yfwd. *K1B. yfwd. K2tog. K2. yfwd. K1B. yfwd. K2. Sl1. K1. psso. yfwd. Sl1. K2tog. psso. yfwd. ** Sl1. K1. psso. K2tog. yfwd. Sl1. K2tog. psso. yfwd. K2tog. K2. yfwd. K1B. yfwd. K2. Sl1. K1. psso. yfwd. Rep from * twice more, then from * to ** once more. Sl1. K2tog. psso. K1. yfwd. K1B] twice. P2. K1B.

11th row: K1B. P2. K1B. [yfwd. K2. Sl1. K2tog. psso. yfwd. K2tog. K3. yfwd. K1B. yfwd. K3. Sl1. K1. psso. yfwd. *K1B. yfwd.

K2tog. K3. yfwd. K1B. yfwd. K3. Sl1. K1. psso. yfwd. ** (Sl1. K2tog. psso) twice. yfwd. K2tog. K3. yfwd. K1B. yfwd. K3. Sl1. K1. psso. yfwd. Rep from * twice more, then from * to ** once more. Sl1. K2tog. psso. K2. yfwd. K1B] twice. P2. K1B.

13th row: K1B. P2. K1B. [yfwd. K1. yfwd. (Sl1. K2tog. psso) twice. K7. K2tog. yfwd. K1. yfwd. *K1B. yfwd. K1. yfwd. Sl1. K1. psso. ** K8. Sl1. K2tog. psso. (yfwd) twice. Sl1. K2tog. psso. K8. K2tog. yfwd. K1. yfwd. Rep from * twice more, then from * to ** once more. K7. (Sl1. K2tog. psso) twice. yfwd. K1. yfwd. K1B] twice. P2. K1B.

15th row: K1B. P2. K1B. [yfwd. K1. yfwd. K1B. yfwd. K2. (yfwd) twice. Sl1. K1. psso. K5. K2tog. yfwd. K3. yfwd. *K1B. yfwd. K3. yfwd. Sl1. K1. psso. K5. ** Sl1. K2tog. psso. yfwd. K2. yfwd. Sl1. K2tog. psso. K5. K2tog. yfwd. K3. yfwd. Rep from * twice more, then from * to ** once more. K2tog. (yfwd) twice. K2. yfwd. K1B. yfwd. K1. yfwd. K1B] twice. P2. K1B.

17th row: K1B. P2. K1B. [yfwd. K2tog. K1. yfwd. K1B. yfwd. K1. Sl1. K1. psso. yfwd. K2. yfwd. Sl1. K1. psso. K3. K2tog. yfwd. K2tog. yfwd. K1B. yfwd. Sl1. K1. psso. yfwd. *K1B. yfwd. K2tog. yfwd. K1B. yfwd. Sl1. K1. psso. yfwd. Sl1. K1. psso. K3. K2tog. yfwd. ** Sl1. K1. psso. K2tog. yfwd. Sl1. K1. psso. K3. (K2tog. yfwd) twice. K1B. yfwd. Sl1. K1. psso. yfwd. Rep from * twice more, then from * to ** once more. K2. yfwd. K2tog. K1. yfwd. K1B. yfwd. K1. Sl1. K1. psso. yfwd. K1B] twice. P2. K1B.

19th row: K1B. P2. K1B. [yfwd. K2tog. K2. yfwd. K1B. yfwd. K3. yfwd. Sl1. K1. psso. K2tog. yfwd. Sl1. K1. psso. K1. K2tog. yfwd. K2tog. K1. yfwd. K1B. yfwd. K1. Sl1. K1. psso. yfwd. *K1B. yfwd. K2tog. K1. yfwd. K1B. yfwd. K1. Sl1. K1. psso. yfwd. Sl1. K1. psso. K1. K2tog. yfwd. Sl1. K1. psso. K2tog. yfwd. ** Sl1. K1. psso. K1. K2tog. yfwd. K2tog. K1. yfwd. K1B. yfwd. K1. Sl1. K1. psso. yfwd. Rep from * twice more, then from * to ** once more. K3. yfwd. K1B. yfwd. K2. Sl1. K1. psso. yfwd. K1B] twice. P2. K1B.

21st row: K1B. P2. K1B. [yfwd. K2tog. K3. yfwd. K1B. yfwd. K4. yfwd. Sl1. K1. psso. K2tog. yfwd. Sl1. K2tog. psso. yfwd. K2tog. K2. yfwd. K1B. yfwd. K2. Sl1. K1. psso. yfwd. *K1B. yfwd. K2tog. K2. yfwd. K1B. yfwd. K2. Sl1. K1. psso. yfwd. Sl1. K2tog. psso. yfwd. Sl1. K1. psso. K2tog. yfwd. ** Sl1. K2tog. psso. yfwd. K2tog. K2. yfwd. K1B. yfwd. K2. Sl1. K1. psso. yfwd. Rep from * twice more, then from * to ** once more. K4. yfwd. K1B. yfwd. K3. Sl1. K1. psso. yfwd. K1B] twice. P2. K1B.

23rd row: K1B. P2. K1B. [(y fwd) twice. K2tog. K4. y fwd. K1B. y fwd. K3. Sl1. K1. pssso. y fwd. Sl1. K1. pssso. Sl1. K2tog. pssso. y fwd. K2tog. K3. y fwd. K1B. y fwd. K3. Sl1. K1. pssso. y fwd. *K1B. y fwd. K2tog. K3. y fwd. K1B. y fwd. K3. Sl1. K1. pssso. y fwd.** (Sl1. K2tog. pssso) twice. y fwd. K2tog. K3. y fwd. K1B. y fwd. K3. Sl1. K1. pssso. y fwd. Rep from * twice more, then from * to ** once more. Sl1. K2tog. pssso. K2tog. y fwd. K2tog. K3. y fwd. K1B. y fwd. K4. Sl1. K1. pssso. (y fwd) twice. K1B] twice. P2. K1B.

24th row: Purl.

Work Panel VI as follows:

1st row: (RS). K1B. P2. [(K1B. y fwd) twice. *(K1B. y fwd) twice. Sl1. K1. pssso. K8. Sl1. K2tog. pssso. (y fwd) twice. Sl1. K2tog. pssso. K8. K2tog. y fwd. K1B. y fwd.* Rep from * to * twice more. (K1B. y fwd) twice] twice. K1B. P2. K1B.

2nd row: Purl.

Rep 3rd to 12th rows as given for Panel IV, noting rep from * to * will be worked 5 times instead of 3 times.

Rep 1st to 24th rows of Panel V, noting rep from * will be worked 5 times instead of 3 times.

Rep 1st and 2nd rows of Panel VI, noting rep from * to * will be worked 5 times instead of 3 times.

Rep 3rd to 12th rows as given for Panel IV, noting rep from * to * will be worked 7 times instead of 3 times.

Rep 1st to 22nd rows of Panel V, noting rep from * will be worked 7 times instead of 3 times.

Work Panel VII as follows:

1st row: K1B. P2. K1B. [y fwd. K2tog. K4. y fwd. K1B. y fwd. K3. Sl1. K1. pssso. y fwd. Sl1. K1. pssso. Sl1. K2tog. pssso. y fwd. K2tog. K3. y fwd. K1B. y fwd. K3. Sl1. K1. pssso. y fwd. *K1B. y fwd. K2tog. K3. y fwd. K1B. y fwd. K3. Sl1. K1. pssso. y fwd.** (Sl1. K2tog. pssso) twice. y fwd. K2tog. K3. y fwd. K1B. y fwd. K3. Sl1. K1. pssso. y fwd. Rep from * twice more, then from * to ** once more. Sl1. K2tog. pssso. K2tog. y fwd. K2tog. K3. y fwd. K1B. y fwd. K4. Sl1. K1. pssso. y fwd. K1B] twice. P2. K1B.

2nd row: Purl.

Work Panel VIII as follows:

1st row: (RS). K1B. P2. K1B. [y fwd. *K1B. (y fwd. Sl1. K2tog. pssso. K8. Sl1. K2tog. pssso. y fwd) twice. Rep from * 8 times more. K1B. y fwd. K1B] twice. P2. K1B.

2nd and alt rows: Purl.

3rd row: K1B. P2. K1B. y fwd. K1. *K1B. y fwd. K1. y fwd. Sl1. K1. pssso. K5. Sl1. K2tog. pssso. y fwd. K2. y fwd. Sl1. K2tog. pssso. K5. K2tog. y fwd. K1. y fwd. Rep from * 8 times more. K1B. K1. y fwd. K1B] twice. P2. K1B.

5th row: K1B. P2. K1B. [y fwd. K2tog. *K1B. (y fwd. Sl1. K1. pssso. K1) twice. K2. (K2tog. y fwd. Sl1. K1. pssso) twice. K2. (K1. K2tog. y fwd) twice. Rep from * 8 times more. K1B. Sl1. K1. pssso. y fwd. K1B] twice. P2. K1B.

7th row: K1B. P2. K1B. [y fwd. K2tog. y fwd. *K1B. (y fwd. Sl1. K1. pssso) 3 times. K1. (K2tog. y fwd. Sl1. K1. pssso) twice. K1. (K2tog. y fwd) 3 times. Rep from * 8 times more. K1B. y fwd. Sl1. K1. pssso. y fwd. K1B] twice. P2. K1B.

9th row: K1B. P2. K1B. [y fwd. K2tog. y fwd. *K3. y fwd. Sl1. K1. pssso. y fwd. K2. y fwd. Sl1. K2tog. pssso. y fwd. Sl1. K1. pssso. K2tog. y fwd. Sl1. K2tog. pssso. y fwd. K2. y fwd. K2tog. y fwd. Rep from * 8 times more. K3. y fwd. Sl1. K1. pssso. y fwd. K1B] twice. P2. K1B.

11th row: K1B. P2. K1B. [y fwd. K2tog. y fwd. *K5. (y fwd. Sl1. K1. pssso) twice. K1. Sl1. K2tog. pssso. (y fwd) twice. Sl1. K2tog. pssso. K1. (K2tog. y fwd) twice. Rep from * 8 times more. K5. y fwd. Sl1. K1. pssso. y fwd. K1B] twice. P2. K1B.

13th row: K1B. P2. K1B. [y fwd. K2tog. *y fwd. K7. y fwd. K2. [K2tog. (y fwd) twice. Sl1. K1. pssso] twice. K2. Rep from * 8 times more. y fwd. K7. y fwd. Sl1. K1. pssso. y fwd. K1B] twice. P2. K1B.

15th row: K1B. P2. K1B. [y fwd. K2tog. *y fwd. K9. y fwd. Sl1. K1. pssso. (y fwd. Sl1. K1. pssso. K2tog. y fwd) twice. K2tog. Rep from * 8 times more. y fwd. K9. y fwd. Sl1. K1. pssso. y fwd. K1B] twice. P2. K1B.

17th row: K1B. P2. K1B. [y fwd. K2tog. y fwd. K3. y fwd. Sl1. K1. pssso. *K1. K2tog. y fwd. K3. y fwd. Sl1. K2tog. pssso. (y fwd) twice. Sl1. K1. pssso. K2tog. (y fwd) twice. Sl1. K2tog. pssso. y fwd. K3. y fwd. Sl1. K1. pssso. Rep from * 8 times more. K1. K2tog. y fwd. K3. y fwd. Sl1. K1. pssso. y fwd. K1B] twice. P2. K1B.

19th row: K1B. P2. K1B. [y fwd. K2tog. y fwd. K4. y fwd. Sl1. K1. pssso. *K1. K2tog. y fwd. K4. (y fwd. Sl1. K1. pssso. K2tog. y fwd) twice. K4. y fwd. Sl1. K1. pssso. Rep from * 8 times more. K1. K2tog. y fwd. K4. y fwd. Sl1. K1. pssso. y fwd. K1B] twice. P2. K1B.

21st row: K1B. P2. K1B. [y fwd. K2tog. y fwd. K5. (y fwd) twice. *(K5. y fwd) twice. K1. Sl1. K1. pssso. K2tog. K1. y fwd. K5. y fwd. Rep from * 8 times more. K5. (y fwd) twice. K5. y fwd. Sl1. K1. pssso. y fwd. K1B] twice. P2. K1B.

23rd row: K1B. P2. K1B. [y fwd. K2tog. y fwd. K1. y fwd. Sl1. K1. pssso. K1. K2tog. y fwd. K2. y fwd. *K5. y fwd. K1. (y fwd) twice. Sl1. K1. pssso. (K1. K2tog. y fwd) twice. (y fwd. Sl1. K1. pssso. K1) twice. K2tog. (y fwd) twice. K1. y fwd. Rep from * 8 times more. K5. y fwd. K2. y fwd. Sl1. K1. pssso. K1. K2tog. y fwd. K1. y fwd. Sl1. K1. pssso. y fwd. K1B] twice. P2. K1B.

25th row: K1B. P2. K1B. {y fwd. K2tog. K1. (y fwd) twice. Sl1. K1. pssso. y fwd. Sl1. K2tog. pssso. y fwd. K2. y fwd. Sl1. K1. pssso. y fwd. *K5. y fwd. K2tog. y fwd. K2. y fwd. Sl1. K2tog. pssso. y fwd.** [K2tog. (y fwd) twice. Sl1. K1. pssso] twice. y fwd. Sl1. K2tog. pssso. y fwd. K2. y fwd. Sl1. K1. pssso. y fwd. Rep from * 8 times more, then from * to ** once. K2tog. (y fwd) twice. K1. Sl1. K1. pssso. y fwd. K1B} twice. P2. K1B.

27th row: K1B. P2. K1B. {y fwd. K2tog. [(y fwd) twice. Sl1. K1. pssso. K2tog] 3 times. y fwd. *K5. y fwd. K2tog. [K2tog. (y fwd) twice. Sl1. K1. pssso] 5 times. Sl1. K1. pssso. y fwd. Rep from * 8 times more. K5. (y fwd. Sl1. K1. pssso. K2tog. y fwd) 3 times. y fwd. Sl1. K1. pssso. y fwd. K1B} twice. P2. K1B.

29th row: K1B. P2. K1B. {y fwd. K2tog. y fwd. K1. [K2tog. (y fwd) twice. Sl1. K1. pssso] twice. K2tog. y fwd. Sl1. K1. pssso. y fwd. *K5. y fwd. K2tog. (y fwd. Sl1. K1. pssso. K2tog. y fwd) 5 times. Sl1. K1. pssso. y fwd. Rep from * 8 times more. K5. y fwd. K2tog. (y fwd. Sl1. K1. pssso. K2tog. y fwd) twice. y fwd. Sl1. K1. pssso. K1. y fwd. Sl1. K1. pssso. y fwd. K1B} twice. P2. K1B.

31st row: K1B. P2. K1B. [(y fwd. K2tog) twice. y fwd. (y fwd. Sl1. K1. pssso. K2tog. y fwd) twice. (y fwd. Sl1. K1. pssso) 3 times. *K1. (K2tog. y fwd) 3 times. (y fwd. Sl1. K1. pssso. K2tog. y fwd) 4 times. (y fwd. Sl1. K1. pssso) 3 times. Rep from * 8 times more. K1. (K2tog. y fwd) 3 times. (y fwd. Sl1. K1. pssso. K2tog. y fwd) twice. y fwd. (Sl1. K1. pssso. y fwd) twice. K1B] twice. P2. K1B.

33rd row: K1B. P2. K1B. [y fwd. K2tog. K1. y fwd. (y fwd. Sl1. K1. pssso. K2tog. y fwd) 3 times. y fwd. K1. Sl1. K1. pssso. y fwd. *Sl1. K2tog. pssso. y fwd. K2tog. K1. y fwd. (y fwd. Sl1. K1. pssso. K2tog. y fwd) 5 times. y fwd. K1. Sl1. K1. pssso. y fwd. Rep from * 8 times more. Sl1. K2tog. pssso. y fwd. K2tog. K1. y fwd. (y fwd. Sl1. K1. pssso. K2tog. y fwd) 3 times. y fwd. K1. Sl1. K1. pssso. y fwd. K1B] twice. P2. K1B.

35th row: K1B. P2. K1B. [y fwd. K2tog. y fwd. (y fwd. Sl1. K1. pssso. K2tog. y fwd) 4 times. y fwd. Sl1. K2tog. pssso. *y fwd. K2tog. y fwd. (y fwd. Sl1. K1. pssso. K2tog. y fwd) 6 times. y fwd. Sl1. K2tog. pssso. Rep from * 8 times more. y fwd. Sl1. K1. pssso. y fwd. (y fwd.

Sl1. K1. pss0. K2tog. yfwd) 4 times. yfwd.
Sl1. K1. pss0. yfwd. K1B] twice. P2. K1B.
*****36th row:** Purl.

Change to smaller circular needle and proceed as follows.

37th row: Knit to center st. (K1. yfwd. K1) all in center st. Knit to end of row.

38th and alt rows: Knit.

39th row: Knit to center st. (K1. yfwd. K1) all in center st. Knit to end of row.

41st row: As 39th row.

42nd row: Knit.

43rd row: (Picot row). Cast off 2 sts. * Slip rem st on right hand needle back onto left hand needle. Cast on 3 sts. Cast off 7 sts. Rep from * to last 2 sts. Slip rem st on right hand needle back onto left hand needle. Cast on 3 sts. Cast off 6 sts.***

Version II (*Work from Charts and written instructions*).

Note: All wrong side rows are purled. Work (yfwd) twice on WS rows as follows: P1. P1B.

With pair of needles, cast on 9 sts.

Proceed as follows, noting that work will be moved onto larger circular needle when pair of needles is no longer sufficient to accommodate sts.

1st row: (RS). K1B. P2. K1B. Work 1st row of Chart I, reading row from **right** to left. K1B. P2. K1B.

2nd and alt rows: Purl.

3rd row: K1B. P2. K1B. Work 3rd row of Chart I. K1B. P2. K1B.

Chart I is now in position. Work Chart I to end of chart, ending with RS facing for next row.

Proceed as follows:

1st row: (RS). K1B. P2. K1B. yfwd. Sl1. K1. pss0. K2tog. (yfwd) twice. Sl1. K1. pss0. K2. K2tog. *(yfwd) twice. Sl1. K1. pss0. K2. [K2tog. (yfwd) twice. Sl1. K1. pss0] 3 times. K2. K2tog.* (yfwd) twice. Sl1. K1. pss0. K2. [K2tog. (yfwd) twice. Sl1. K1. pss0] 3 times. K2. Sl1. K2tog. pss0. (yfwd) twice. Sl1. K2tog. pss0. K2. [K2tog. (yfwd) twice. Sl1. K1. pss0] 3 times. K2. K2tog. Rep from * to * once more. (yfwd) twice. Sl1. K1. pss0. K2. K2tog. (yfwd) twice. Sl1. K1. pss0. K2tog. yfwd. K1B. P2. K1B.

2nd and alt rows: Purl.

3rd row: K1B. P2. K1B. Work 3rd row of Chart II. K1B. P2. K1B.

5th row: K1B. P2. K1B. Work 5th row of Chart II. K1B. P2. K1B.

Chart II is now in position. Work Chart II to end of chart, ending with RS facing for next row.

Proceed as follows:

1st row: (RS). K1B. P2. K1B. Work 1st row of Chart III, reading row from **right** to left. K1B. P2. K1B.

2nd and alt rows: Purl.

3rd row: K1B. P2. K1B. Work 3rd row of Chart III. K1B. P2. K1B.

Chart III is now in position. Work Chart III to end of chart, ending with RS facing for next row.

Proceed as follows:

1st row: (RS). K1B. P2. K1B. Work 1st row of Chart IV, reading row from **right** to left and noting Sections A and A-1 will be worked 3 times. K1B. P2. K1B.

2nd and alt rows: Purl.

3rd row: K1B. P2. K1B. Work 3rd row of Chart IV, noting Sections A and A-1 will be worked 3 times. K1B. P2. K1B.

Chart IV is now in position. Work Chart IV to end of chart, ending with RS facing for next row.

Proceed as follows:

1st row: (RS). K1B. P2. K1B. (Work 1st row of Chart V, reading row from **right** to left and noting Section B will be worked 3 times) twice. P2. K1B.

2nd and alt rows: Purl.

3rd row: K1B. P2. K1B. (Work 3rd row of Chart V, noting Section B will be worked 3 times) twice. P2. K1B.

Chart V is now in position. Work Chart V to end of chart, ending with RS facing for next row.

Proceed as follows:

1st row: (RS). K1B. P2. K1B. (Work 1st row of Chart VI, reading row from **right** to left and noting Section C will be worked 3 times) twice. P2. K1B.

2nd row: Purl.

Proceed as follows:

1st row: (RS). K1B. P2. K1B. (Work 3rd row of Chart IV, reading row from **right** to left and noting Section A will be worked 5 times) twice. K1B. P2. K1B.

2nd and alt rows: Purl.

3rd row: K1B. P2. K1B. (Work 5th row of Chart IV, noting Section A will be worked 5 times) twice. K1B. P2. K1B.

Chart IV is now in position. Work Chart IV to end of chart, ending with RS facing for next row.

Proceed as follows:

1st row: (RS). K1B. P2. K1B. (Work 1st row of Chart V, reading row from **right** to left and noting Section B will be worked 5 times) twice. P2. K1B.

2nd and alt rows: Purl.

3rd row: K1B. P2. K1B. (Work 3rd row of Chart V, noting Section B will be worked 5 times) twice. P2. K1B.

Chart V is now in position. Work Chart V to end of chart, ending with RS facing for next row.

Proceed as follows:

1st row: (RS). K1B. P2. K1B. (Work 1st row of Chart VI, noting Section C will be worked 5 times) twice. P2. K1B.

2nd row: Purl.

Proceed as follows:

1st row: (RS). K1B. P2. K1B. (Work 3rd row of Chart IV, reading row from **right** to left and noting Section A will be worked 7 times) twice. K1B. P2. K1B.

2nd and alt rows: Purl.

3rd row: K1B. P2. K1B. (Work 4th row of Chart IV, noting Section A will be worked 7 times) twice. K1B. P2. K1B.

Chart IV is now in position. Work Chart IV to end of chart, ending with RS facing for next row.

Proceed as follows:

1st row: (RS). K1B. P2. K1B. (work 1st row of Chart V noting Section B will be worked 7 times) twice. P2. K1B.

2nd and alt rows: Purl.

Chart V is now in position.

Work Chart V until 21st row of Chart is complete.

Next row: Purl.

Proceed as follows:

1st row: (RS). K1B. P2. K1B. (Work 1st row of Chart VII, reading row from **right** to left and noting Section D will be worked 7 times) twice. P2. K1B.

Next row: Purl.

Proceed as follows:

1st row: (RS). K1B. P2. K1B. (Work 1st row of Chart VIII, reading row from **right** to left) twice. P2. K1B.

2nd and alt rows: Purl.

3rd row: K1B. P2. K1B. (Work 2nd row of Chart VIII) twice. P2. K1B.

Chart VIII is now in position. Work Chart VIII to end of chart, ending with RS facing for next row.

Rep from *** to *** as given for Version I.

Chart I

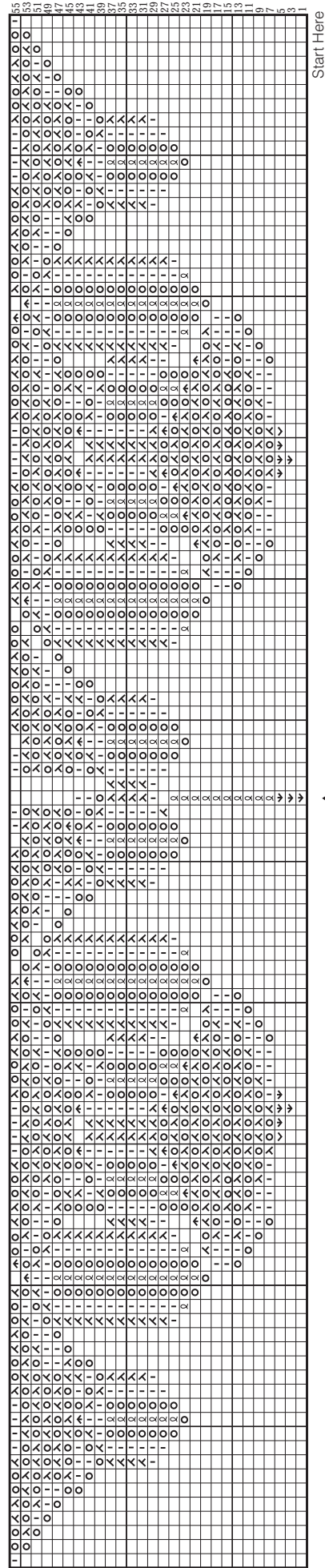


Chart II

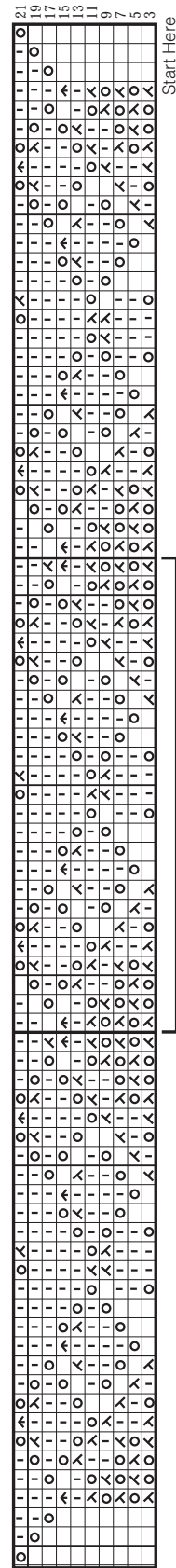
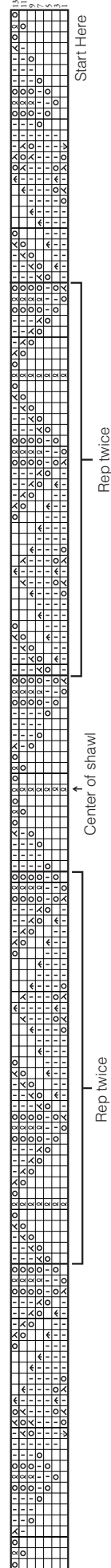


Chart III



Key

- K1 = K1.
- K1 into back of next st. = Knit into back of next st.
- K2tog = K2tog
- S11. K1. pssso. = S11. K1. pssso.
- yfwd. = yfwd.
- S11. K2tog. pssso = S11. K2tog. pssso
- (K1. yfwd. K1) all in next st. = (K1. yfwd. K1) all in next st.
- Inc 1 st in next st. = Inc 1 st in next st.
- Grid only. No sts. = Grid only. No sts.

Chart IV

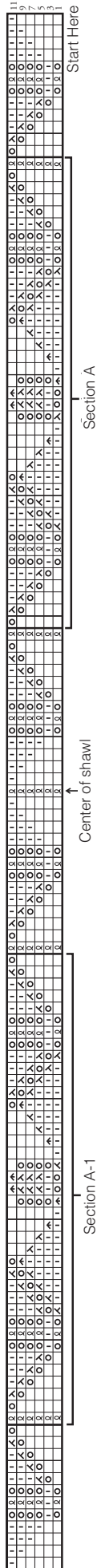


Chart V

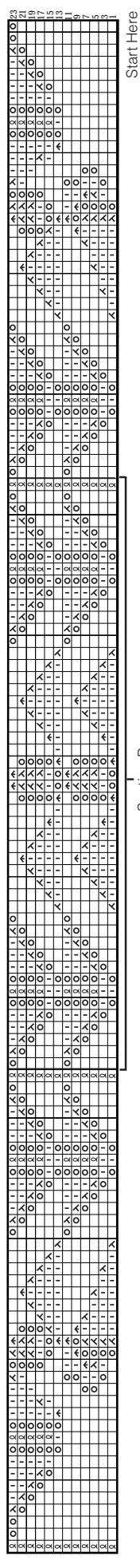


Chart VI



Chart VII



Chart VIII

