



Butterfly Kiss

DESIGNED BY AINO HAIKALA



Gauge

15 stitches and 32 rows = 4" or 10 cm in main pattern of the body charts

Finished Size

217 cm (85 inches) across by 85 cm (34 inches) down

Materials

740 yards (680 meters) of fingering weight yarn.

Size 6 beads (optional). The total amount of beads needed is 435.

Notions:

3,75 mm (US5) needles
Waste yarn for provisional CO
Stitch Markers (optional)
Tapestry needle

Sample Shown in

Drops Alpaca 50 g / 166 m (182 yards) (100 % alpaca)

GENERAL INFORMATION



*“May the wings of the butterfly kiss the sun
And find your shoulder to light on,
To bring you luck, happiness and riches
Today, tomorrow and beyond.”
~Irish blessing*

Butterfly Kiss features five large butterflies. It is half-circular shawl, big enough to wrap it around you. Butterfly Kiss is knitted from the center of the neck outwards. The butterfly and flower stitch motifs are inspired by Estonian lace and they were specifically designed for this project.

Difficulty Level

Intermediate +
Not for beginner lace knitter
Charted

Needed skills:

Basic lace stitches
Basic cables
Double yo
Provisional CO
Blocking

No lace stitches on WS rows.



Contact info

You can contact me in Ravelry or by emailing to aino.haikala@gmail.com. The pattern is thoroughly test knitted, but if you think you may have found an error, please let me know.

Copyright

This pattern is copyrighted material. You may not distribute or sell electronic or paper copies of this pattern, in whole or in part, in any way. Some of the lace motifs of this pattern have been designed from scratch by me. Please do not use them in your own designs.



- The charts do not include three stitch garter stitch border. There is no center stitch nor are there increases in the sides of the shawl.
- On wrong side rows, knit the first three and the last three stitches and purl all other stitches except for double YO's which are worked as knit 1 and purl 1.
- The light yellow squares in the Butterfly charts will help you to see the outline of the butterfly. Yellow squares indicate bead placement.
- It's recommended to separate different motifs by using contrasting stitch markers.
- Stitch markers may need to be moved at the beginning of each chart and on rows with double decreases.
- Exact gauge is not important. Do note that a looser gauge will result in the use of more yardage.

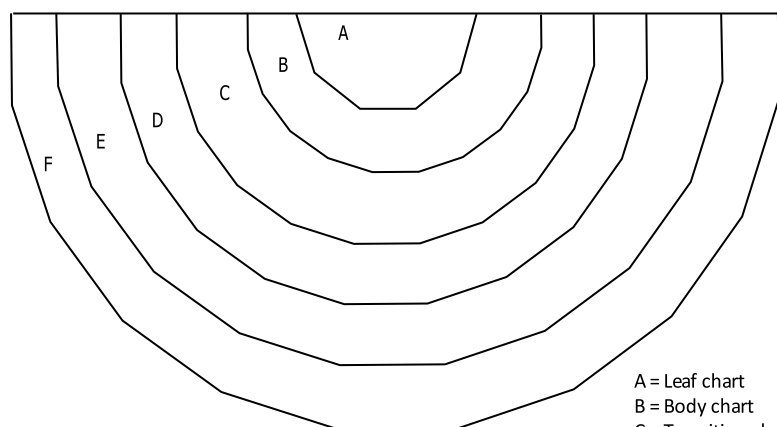
Adding beads

The number of beads needed for each section is included in the instructions. You can add the beads using your preferred method, like using a crochet hook. Beads are always placed before working the stitch.

If the beaded stitch is k, insert a bead on the next stitch and knit it. If the beaded stitch is ssk or sssk, place the bead on the first stitch on the holding needle. If it's k2tog or sk2p, place the bead on the second stitch on the holding needle, if it's k3tog place the bead on the third stitch on the needle. After placing the bead, make the decrease normally. The bead should be placed on the topmost stitch.

Adjusting the size

If you want to change the size of the shawl, you can knit the Body chart as many times as you wish, or skip it completely.



A = Leaf chart
 B = Body chart
 C = Transition chart 1
 D = Transition chart 2
 E = Butterfly chart
 F = Border chart

Structure

This pattern consists of six different sections. The charts of each section are worked once. There are two different charts for all sections except the first section: main pattern and increasing panel. The increases of the shawl are hidden in the increasing panels.

INSTRUCTIONS



CO 3 sts provisionally using scrap yarn. Knit 9 rows with main yarn. Do not turn the work around but rotate 90 degrees clock-wise, pick up and knit 5 sts from the garter stitch edge of the piece, undo provisional cast-on and knit the 3 live sts. (11 sts)

K3, purl to last 3 sts, k3.

Continue, following the instructions.

Work through the charts in following order: leaf chart, body chart, transition chart 1, transition chart 2, butterfly chart and border chart.

Bind off loosely, wash and block.

CHART KEY

○	= yo
/	= k2tog
\	= ssk
↗	= k3tog
↖	= sssk
⤴	= s2kp
∨	= kfb
	= knit
■	= no stitch
■	= beaded stitch
↘ ↗	= 1/1 RC
↘ ↗	= 1/1 LC
↘ ↗ ↘ ↗	= 3/2 RC
↘ ↗ ↘ ↗	= 3/2 LC

Abbreviations

- k = knit
- k2tog = knit 2 together
- ssk = slip1, slip1, knit the slipped stitches together through the back loop
- yo = yarn over
- CO = cast on
- St(s) = stitch(es)
- k3tog = knit 3 together
- sssk = slip1, slip 1, slip 1, knit the slipped stitches together through the back loop
- s2kp = slip 2 stitches together knit-wise. Knit 1 and pass the 2 slipped stitches over the knitted stitch
- kfb = Knit a stitch leaving it on the needle and knit the stitch again into the back loop of the stitch
- 1/1 RC = Sl next st onto cable needle, hold to back of work, k1, k1 from cable needle.
- 1/1 LC = Sl next st onto cable needle, hold to front of work, k1, k1 from cable needle.
- 3/2 RC = Sl next 2 sts onto cable needle, hold to back of work, k3, k2 from cable needle.
- 3/2 LC = Sl next 3 sts onto cable needle, hold to front of work, k2, k3 from cable needle.

LEAF CHART



Work rows 1-54 of the Leaf chart once. There are 5 repeats of the motif in a row (128 sts).

	24	23	22	21	20	19	18	17	16	15	14	13	12	11	10	9	8	7	6	5	4	3	2	1		
53	¹		o	/				\	o		o	Λ	o		o	/				\	o				²	53
51		o								o	/		\	o									o			51
49		\	o			\	o		o	/				\	o		o	/				o	/	o		49
47			\	o			\	o								o	/				o	/				47
45				o			\	o						o	/				o							45
43		o	/	\	o			\	o					o	/			o	/	\	o					43
41						o				o	Λ	o				o										41
39						o	/		o	/		\	o		\	o										39
37				o	/		o	/					\	o		\	o									37
35			o	/		o									o		\	o								35
33			o	/		o	/							\	o		\	o								33
31					o	/									\	o										31
29				o				\	o		o	/						o								29
27								\	o		o	/														27
25				o				\	o		o	/						o								25
23									o	Λ	o															23
21						o			o	/		\	o					o								21
19							o	/					\	o												19
17							o	/						\	o											17
15									o		o															15
13								\		o		o			/											13
11									o		o															11
9								\	o		o	/														9
7								/	o		o	\														7
5									o		o															5
3										o																3
1											o															1

¹In the last repeat k and yo
²In the first repeat o and k

BODY CHART



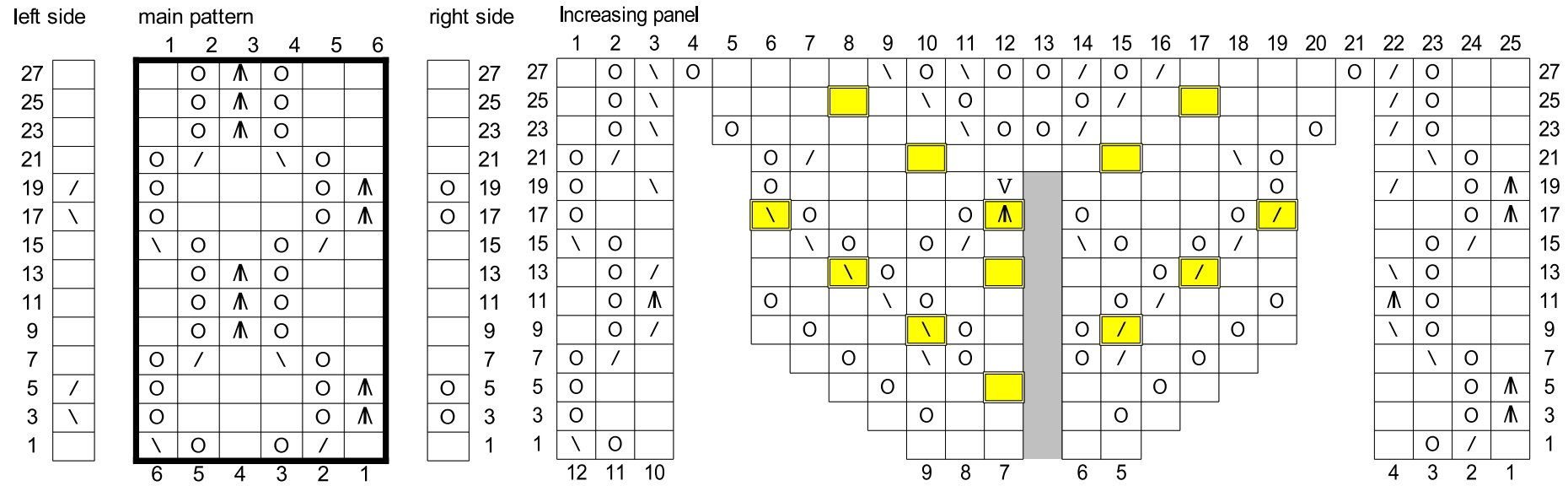
Work rows 1-28 of the Body chart in the following order: right side, main pattern, increasing panel, *main pattern twice, increasing panel * 4 times, main pattern, left side (188 sts). Markers need to be moved in rows 3, 5, 17 and 19.

left side		main pattern						right side		Increasing panel																								
		1	2	3	4	5	6			1	2	3	4	5	6	7	8	9	10	11	12	13	14	15	16	17	18	19	20	21	22	23	24	
27			○	▲	○				27	27		○	/	○						○	▲	○		○	/				○	\	○			27
25			○	▲	○				25	25		○	/							○	▲	○							\	○			25	
23			○	▲	○				23	23		○	/		○					○	▲	○						○	\	○			23	
21		○	/		\	○			21	21	○	/			○	/										\	○			\	○		21	
19	/	○				○	▲	○	19	19	○		\		○											○		/		○	▲	19		
17	\	○				○	▲	○	17	17	○			\	○					○	▲	○				○	/			○	▲	17		
15		\	○		○	/			15	15	\	○			\	○				○	/	\	○		○	/				○	/	15		
13			○	▲	○				13	13		○	/			\	○							○	/			\	○			13		
11			○	▲	○				11	11		○	▲			○							○	/			○		▲	○		11		
9			○	▲	○				9	9		○	/			○							○	/			○		\	○		9		
7		○	/		\	○			7	7	○	/				○													\	○		7		
5	/	○				○	▲	○	5	5	○					○									○					○	▲	5		
3	\	○				○	▲	○	3	3	○									○										○	▲	3		
1		\	○		○	/			1	1	\	○																	○	/		1		
		6	5	4	3	2	1			12	11	10								9	8	7	6	5				4	3	2	1			

TRANSITION CHART 1



Work across each row (1-27) of the Transition chart 1 in the following order: right side, main pattern twice, increasing panel, *main pattern 4 times, increasing panel* 4 times, main pattern twice, left side (253 sts). This section needs 65 beads. Markers need to be moved in rows 3, 5, 17 and 19.



TRANSITION CHART 2



Work across each row (1-20) of the Transition chart 2 in the following order: right side, main pattern, increasing panel, *main pattern 3 times, increasing panel* four times, main pattern, left side (293 sts). This section needs 50 beads. Markers need to be moved in rows 3, 5, 17 and 19.

left side						main pattern						right side				
	1	2	3	4	5	1	2	3	4	5	6	1	2			
19	/	o			o	▲	o				o	▲	o	19		
17	\	o			o	▲	o				o	▲	o	17		
15		\	o		o	/		\	o		o	/			15	
13			o	▲	o				o	▲	o				13	
11			o	▲	o				o	▲	o				11	
9			o	▲	o				o	▲	o				9	
7		o	/		\	o		o	/		\	o			7	
5	/	o			o		▲	o			o		▲	o	5	
3	\	o			o		▲	o			o		▲	o	3	
1		\	o		o	/		\	o		o	/			1	
							6	5	4	3	2	1				

Increasing panel

1	2	3	4	5	6	7	8	9	10	11	12	13	14	15	16	17	18	19	20	21	22	23	24	25	26	27	28	29	30	31	32	33	34	35	36	37	38	39	
19	\	o	\	o			\	o	o	\	\	o	o	/	\	o	o	/	\	o	o	/	/	o	o	/				o	/	o	/	o				o	19
17	/	o	▲	o		■		/	o		o	/	\	o	o	/	\	o	o	/	\	o		o	\		■			o	▲	o	\	o				o	17
15		o	\	o			\	o		\	o	o	/	\	o	o	/	\	o	o	/	\	o	o	/	o	/			o	/	o	\	o		o	/		15
13		o	▲	o		■		/	o	o	/	\	o	o	/	\	o	o	/	\	o	o	\	o	o	\	■			o	▲	o		o	▲	o			13
11		o	\	o			\	o	\	o	o	/	\	o	o	/	\	o	o	/	\	o	o	/	o	/				o	/	o	\	o		o	/		11
9		o	▲	o		■		\	o		\	o	o	/	\	o	o	/	\	o	o	/		o	/	■			o	▲	o		o	▲	o				9
7		o	\	o			/	o	o	/	\	o	o	/	\	o	o	/	\	o	o	\	o	o	\				o	/	o		\	o					7
5	\	o	▲	o		■		\	o	\	o	o	/	\	o	o	/	o	/	o	/		o	/	■				o	▲	o	/	o					o	5
3	/	o	▲	o			/	o		\	o	o	/		o	\													o	▲	o	\	o					o	3
1	/	o	\	o		■		\	o		o	/	\	o		o	/		o	/		o	/	■					o	/	o	\	\	o		o	/		1
	31	30	29	28						27	26	25	24	23	22	21	20	19	18	17	16	15	14	13	12	11	10				9	8	7	6	5	4	3	2	1

BUTTERFLY CHART



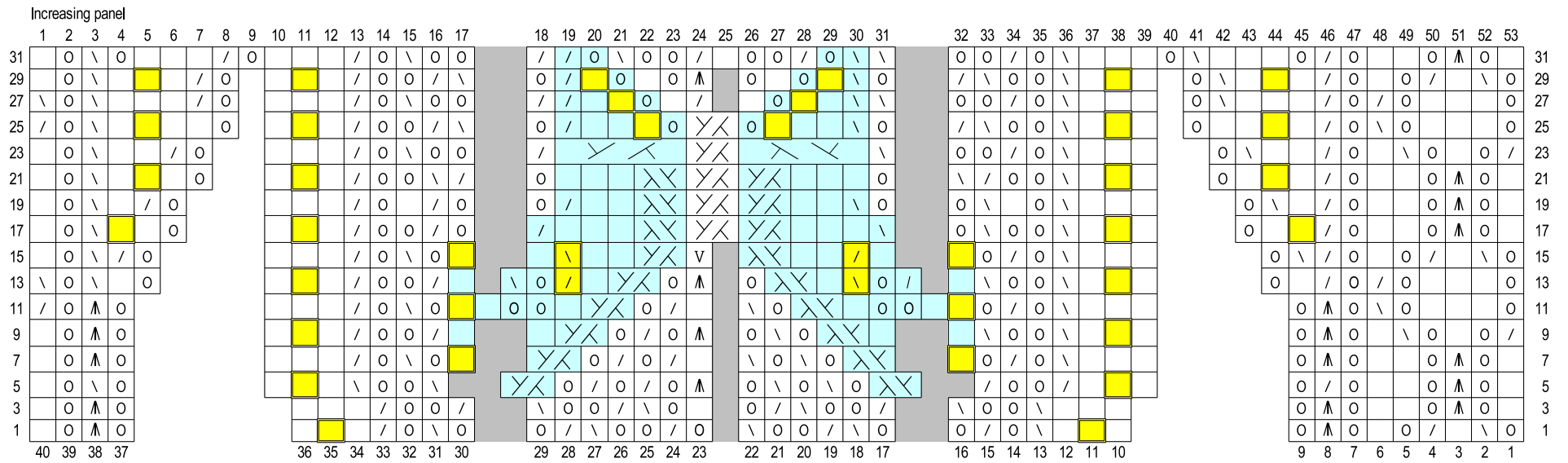
Work across each row (1-32) of the Butterfly chart in the following order: right side, main pattern, increasing panel, *main pattern 3 times, increasing panel* 4 times, main pattern, left side (363 sts). This section needs 200 beads.

left side						main pattern						right side			
						1	2	3	4	5	6				
31			○	▲	○			○	▲	○				31	
29		○	/		\	○		/		\	○		▲	○	29
27	/	○				▲	○						▲	○	27
25	\	○				▲	○						▲	○	25
23		\	○		○		\	○		○	/				23
21			○	▲	○			○	▲	○					21
19			○	▲	○			○	▲	○					19
17			○	▲	○			○	▲	○					17
15		○	/		\	○		/		\	○				15
13	/	○				▲	○						▲	○	13
11	\	○				▲	○						▲	○	11
9		\	○		○		\	○		○	/				9
7			○	▲	○			○	▲	○					7
5			○	▲	○			○	▲	○					5
3			○	▲	○			○	▲	○					3
1		○	/		\	○		/		\	○				1
						6	5	4	3	2	1				

BUTTERFY CHART



Increasing panel



BORDER CHART



Work across each row (1-24) of the Border chart in the following order: right side, main pattern, increasing panel once, *main pattern 3 times, increasing panel* four times, main pattern, left side (468 sts). This section needs 120 beads.

left side						main pattern						right side		
						1	2	3	4	5	6			
23	/	○			○	▲	○				○	▲	○	23
21	/	○			○	▲	○				○	▲	○	21
19	/	○			○	▲	○				○	▲	○	19
17	/	○			○	▲	○				○	▲	○	17
15	/	○			○	▲	○				○	▲	○	15
13	/	○			○	▲	○				○	▲	○	13
11	/	○			○	▲	○				○	▲	○	11
9	/	○			○	▲	○				○	▲	○	9
7	\	○			○	▲	○				○	▲	○	7
5		\	○		○		\	○		○	/			5
3			○	▲	○			○	▲	○				3
1			○	▲	○			○	▲	○				1
						6	5	4	3	2	1			

