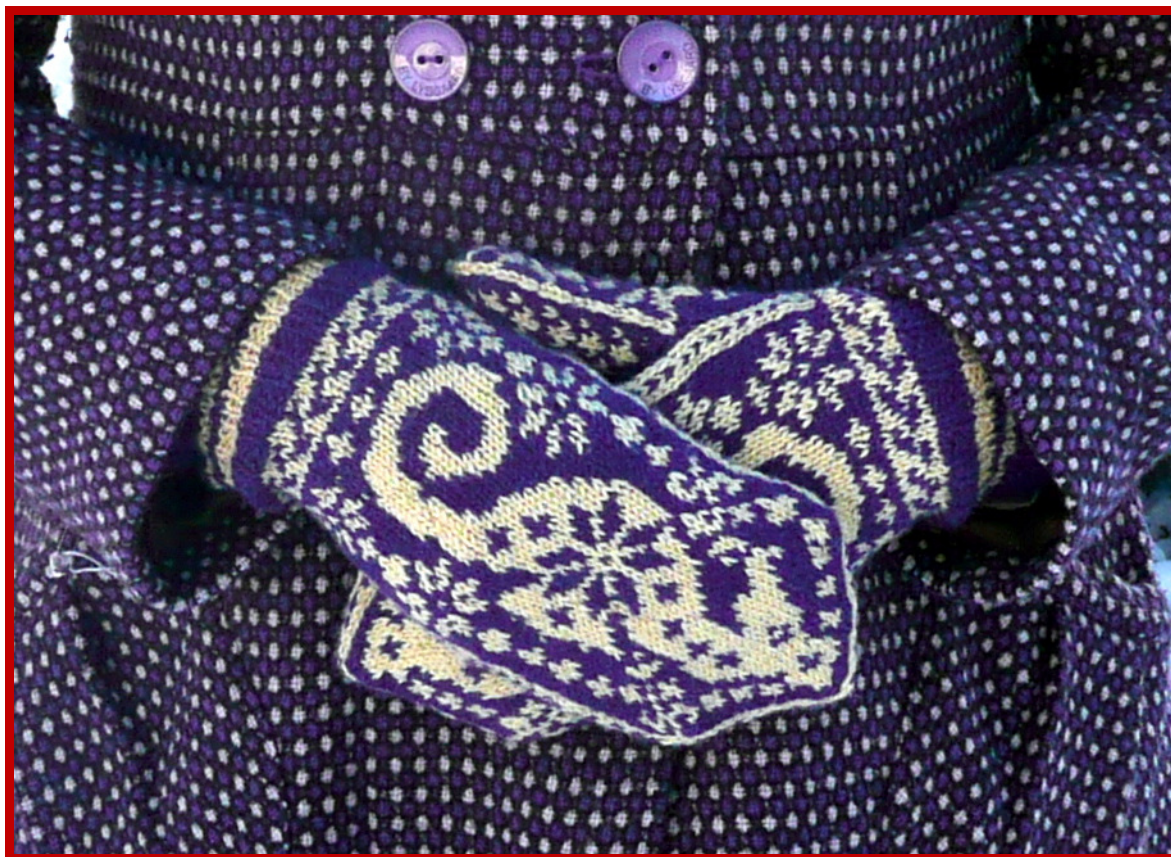




“Selbuvott or not” - alias Selbu Sea Horse Mittens



This is a “Selbu version” of my Hippocampus mittens, originally published in the Winter issue 2008 of *The Inside Loop* (now closed). Some people (from Selbu, which is a place in the middle of Norway, not far from Trondheim) have criticized Terri Shea’s book about Selbu mittens, saying that not all of her mittens are “real” Selbu mittens. Then the Norwegian publisher of the book announced a competition; they wanted knitters to send a photo of their best Selbu mittens. So I was inspired to make a mitten that would pretend to be a Selbu mitten, but that the “Selbu purists” certainly would not accept. Just for fun :-). The text says “Selbu mitten or not” and “This is a real mitten”.

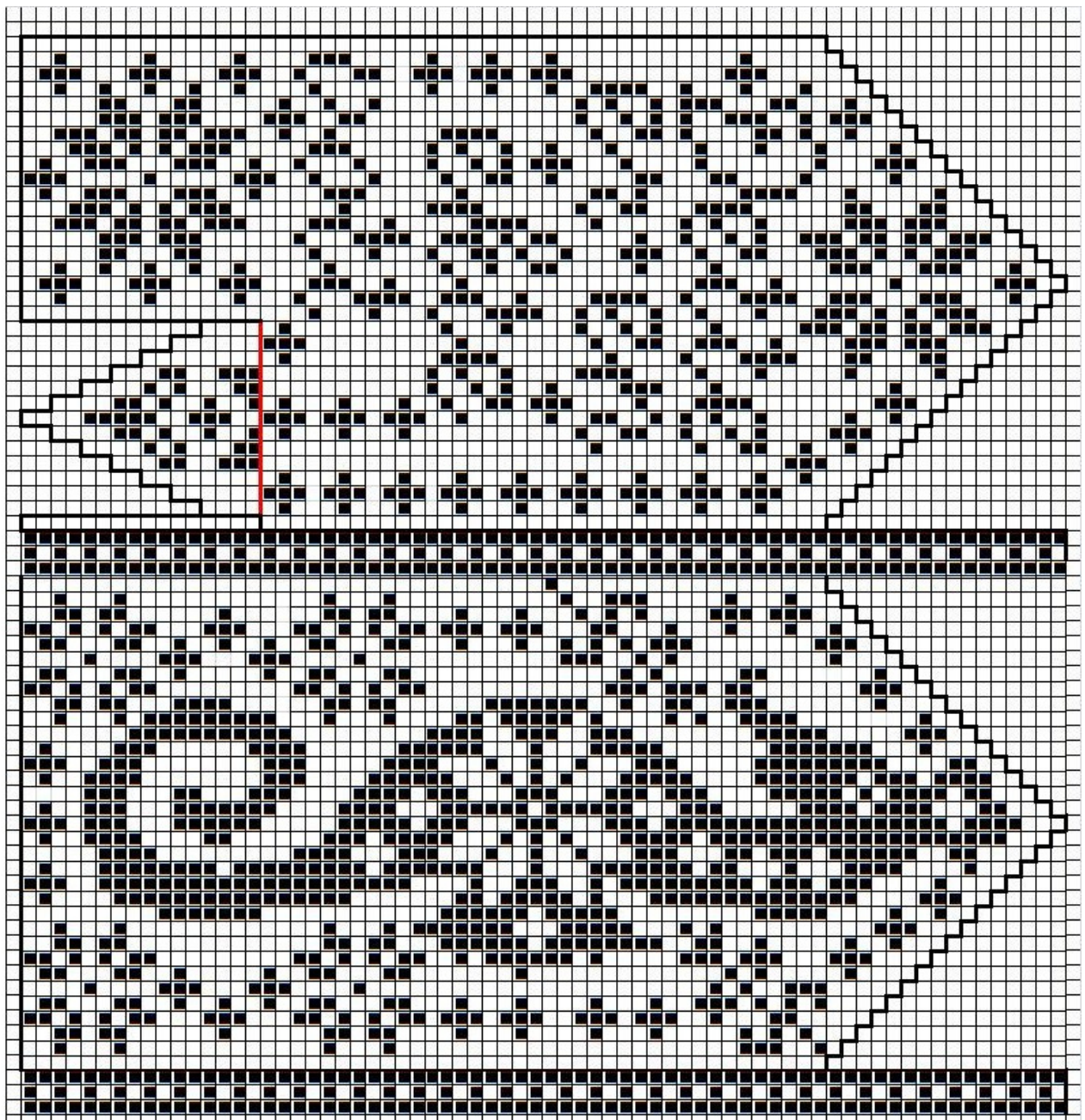
This pattern does not offer detailed instructions on how to make Selbu mittens. You find the charts that I used (with small modifications (improvements)). I also offer a mitten palm without the Norwegian text, and one blank palm where you can write your own text if you wish. My letters are modified “Madrid letters” from this site: www.stitchpoint.com (choose tools, alphabet generator, Madrid).

"Selbuwoll or not" alias Selbu Sea Horse © 2010 korrot design

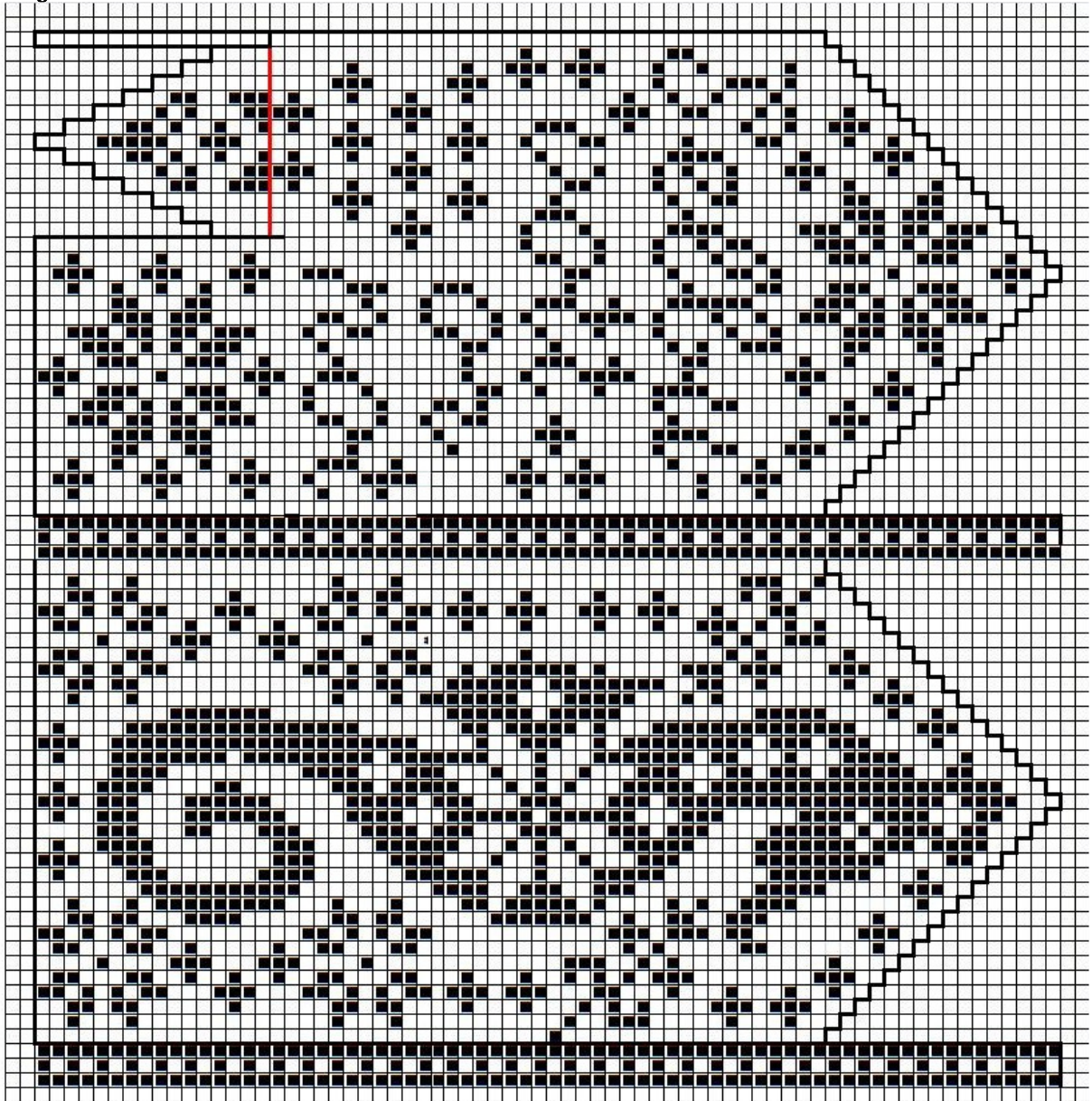
I used light fingering yarn, needles 2,5 mm and my gauge was 34 sts / 10 cm. This gave a medium woman size. The cuff is 48 sts wide, k2, p2 for 8 cm, then increase to 60 sts before this pattern:



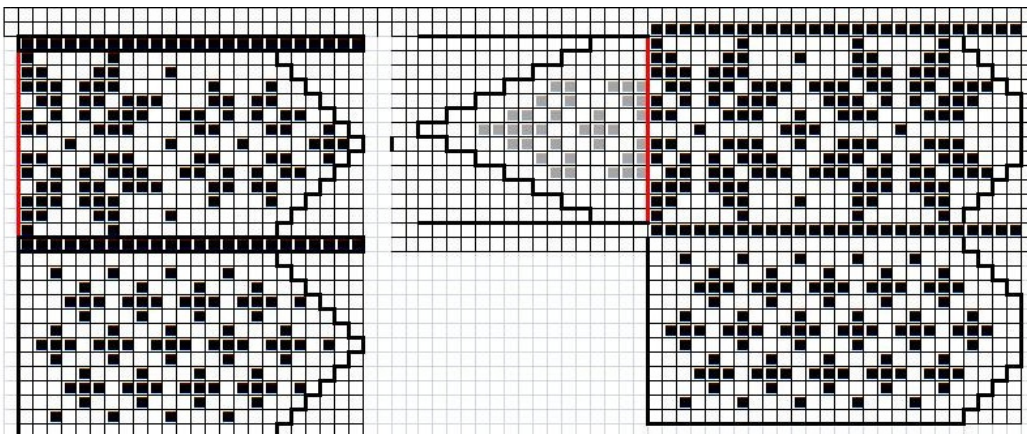
Right mitten chart



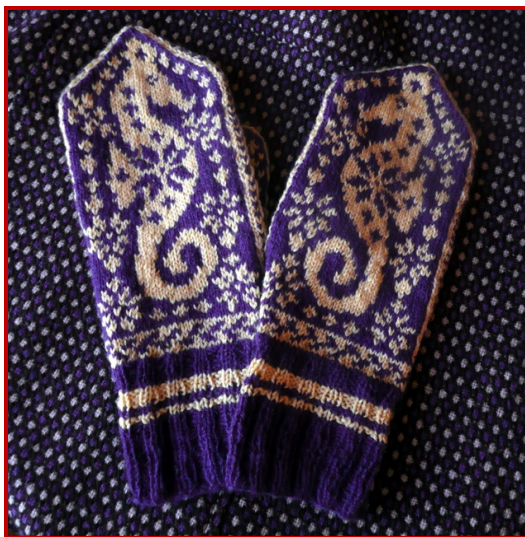
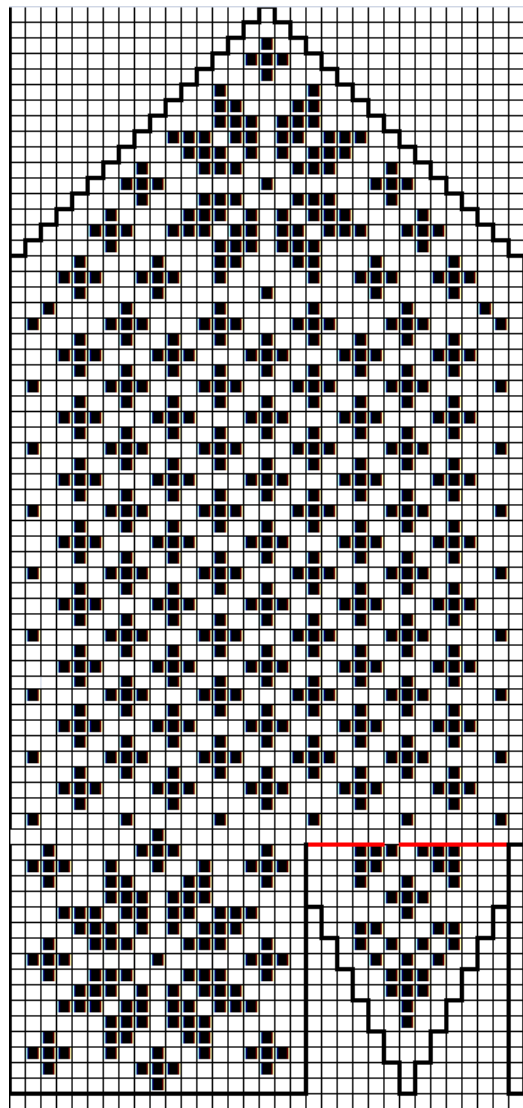
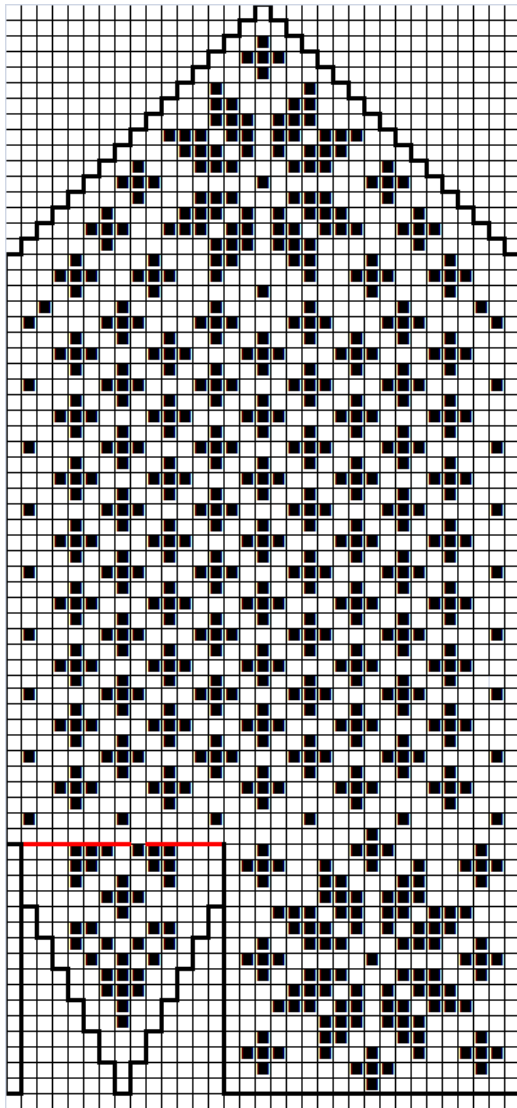
Left mitten chart



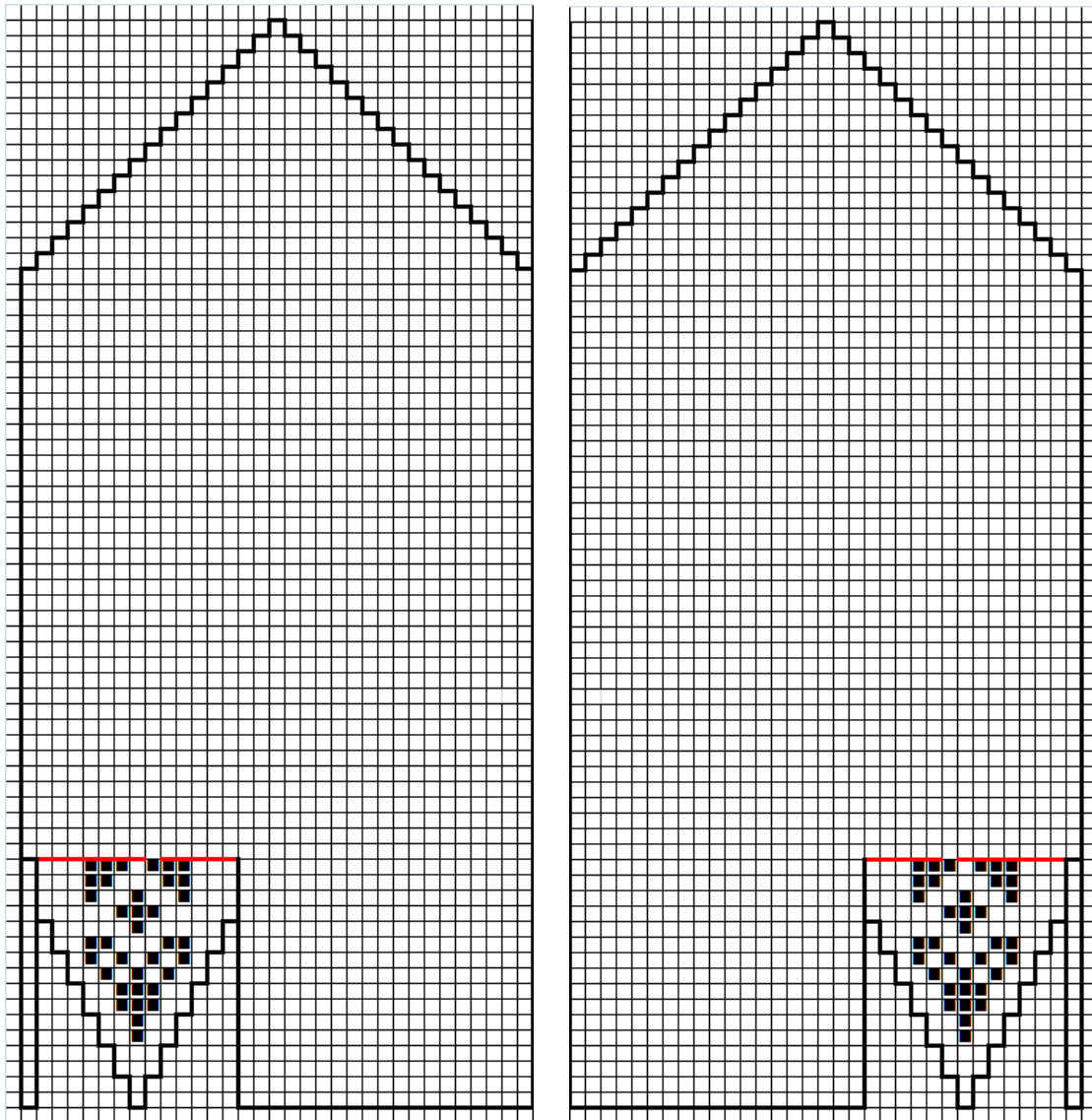
Thumb there are two thumb options, one a little longer than the other.



Alternative palm chart 1



Make your own alternative palm chart



Have fun!



All content and photos are © torirot design. The pattern is for personal and non-profit use only. All rights reserved.