

Lotus Mittens

*Thro' every hollow cave and alley lone
Round and round the spicy downs the yellow
Lotos-dust is blown.*

-- Tennyson, The Lotos-Eaters



This mitten is a modern twist on the traditional Norwegian stranded mittens. The centre flowers are lotus blossoms instead of Selbu roses, and the geometric cuff adds to the modern look. Knit in traditional black and white for a subtle difference, or in bright colours for a trendy look!

Materials:

Set of 5 DPNs, size 2.25 mm

~ 120 yds of Main Colour (fingering weight)

~ 120 yds of Contrast Colour (fingering weight)

Tapestry needle.

2 scrap pieces of yarn.

These are knit at a fairly tight gauge for warmth and wind protection. Check gauge throughout project to avoid mismatched mittens! To increase size, simply adjust needles and/or yarn to adjust gauge.

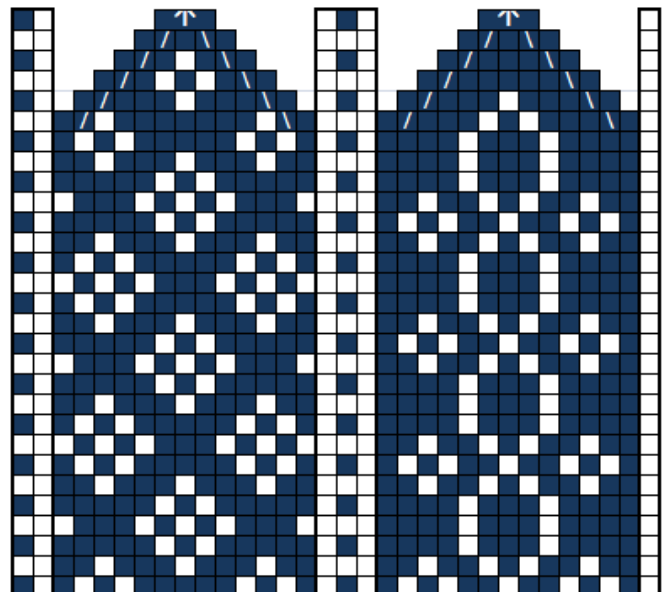
Gauge: 10 sts and 10 rows = 1" across palm

Final measurements: 8" circumference (4" across palm)

Charts legend:

Thumb Chart

- Main Colour
- Contrast Colour
- Thumb placement line - put these stitches on waste yarn
- M Make 1 stitch
- \ SSK
- / K2tog
- ↑ Slip 1, k2tog, pssso



Pattern (make one LH and one RH):

Cast on **72 stitches** in Main Colour and divide evenly among needles. Join in round, being careful not to twist the stitches, and knit four rows in K2, P2 ribbing.

Knit Cuff Chart using Main Colour and Contrast Colour. Be careful not to pull the yarn floats too tightly!

Begin Main Chart (don't forget the increases!). The thumb gusset will take shape as you proceed.

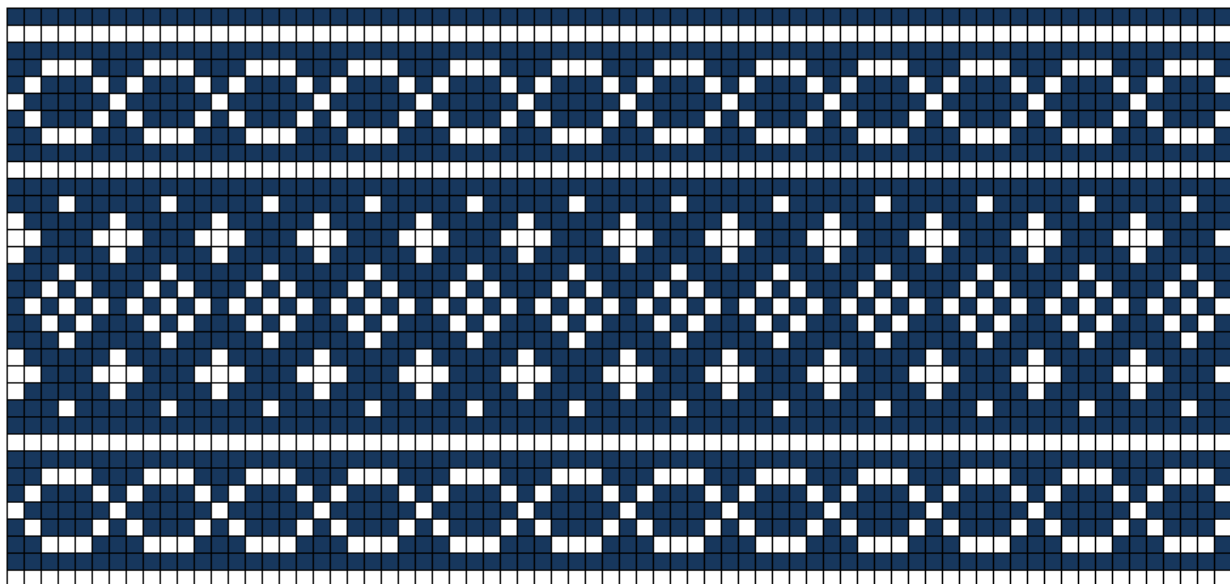
When you reach the thumb line, set aside the **16 sts** as indicated by the chart onto a scrap piece of yarn, and cast on **9 sts** using reverse cast-on method. If you would like a basic thumb gusset tutorial, please contact the designer.

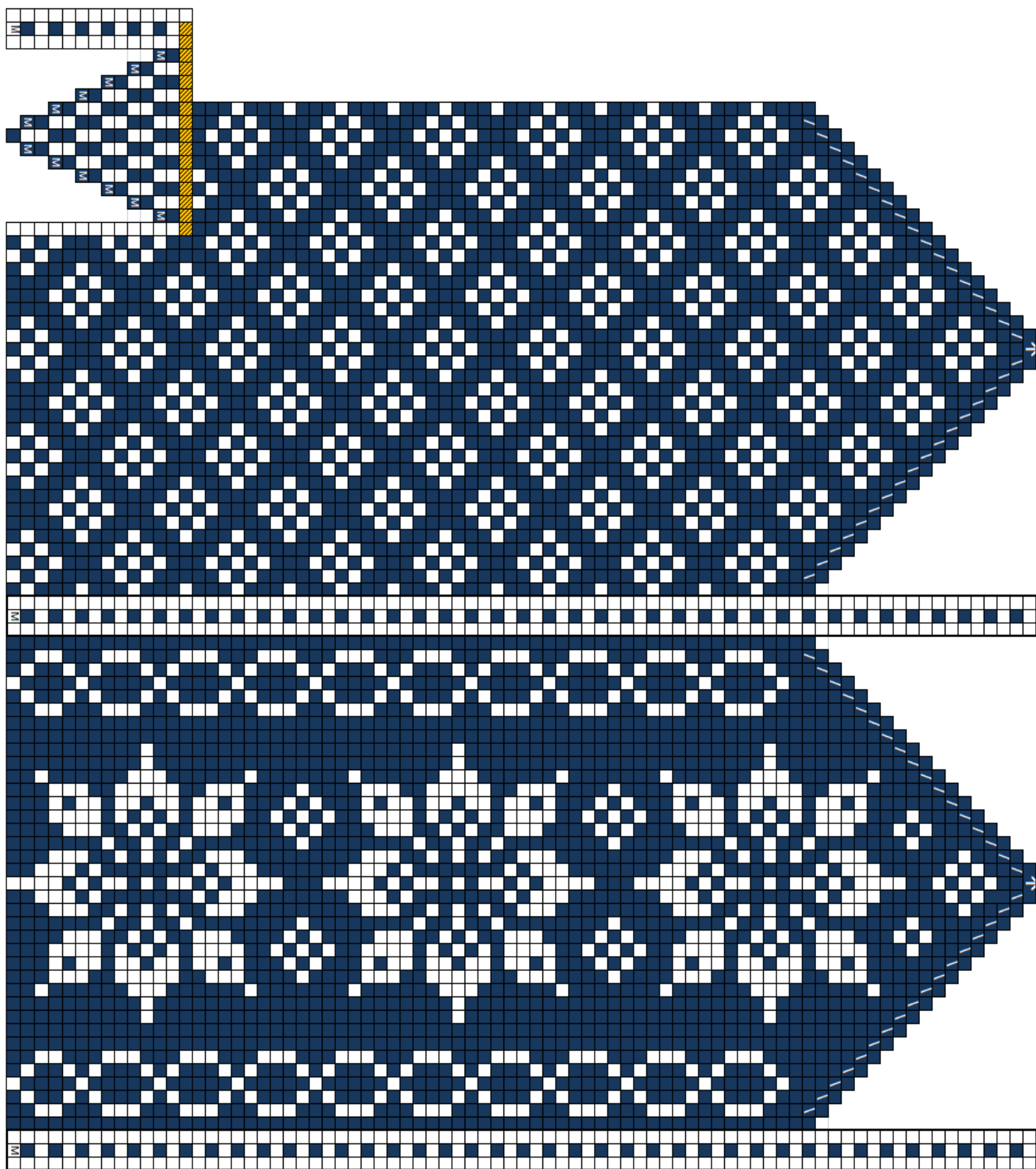
Continue working Main Chart to final row (don't forget the decreases!). Break off yarn, and using tapestry needle, thread through the remaining 8 sts and pull tight, then pull through top of mitten to the inside. Weave in ends.

Thumb: Place the **16 sts** from scrap yarn onto one needle. Pick up **12 sts** from earlier reverse cast-on, then **2 sts** on either side of thumb hole. Divide on DPNs and knit chart starting with palm facing up (front side of thumb) – **32 sts**.

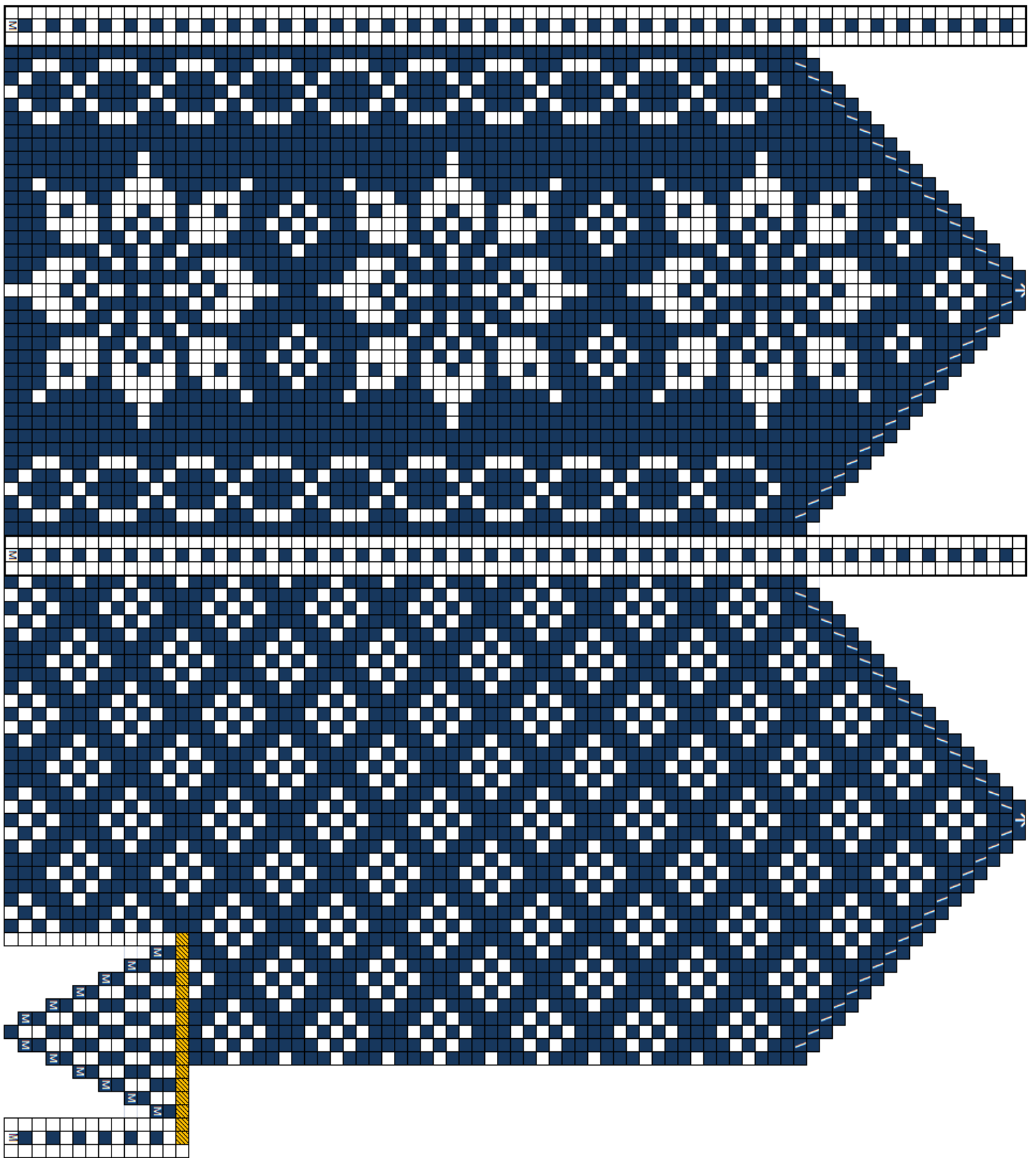
Knit thumb chart. Finish thumb in same manner as mitten tip by pulling yarn through the remaining sts and weaving ends inside. Repeat for second mitten. Weave in ends and block lightly.

Cuff Chart





Left Hand



Right Hand