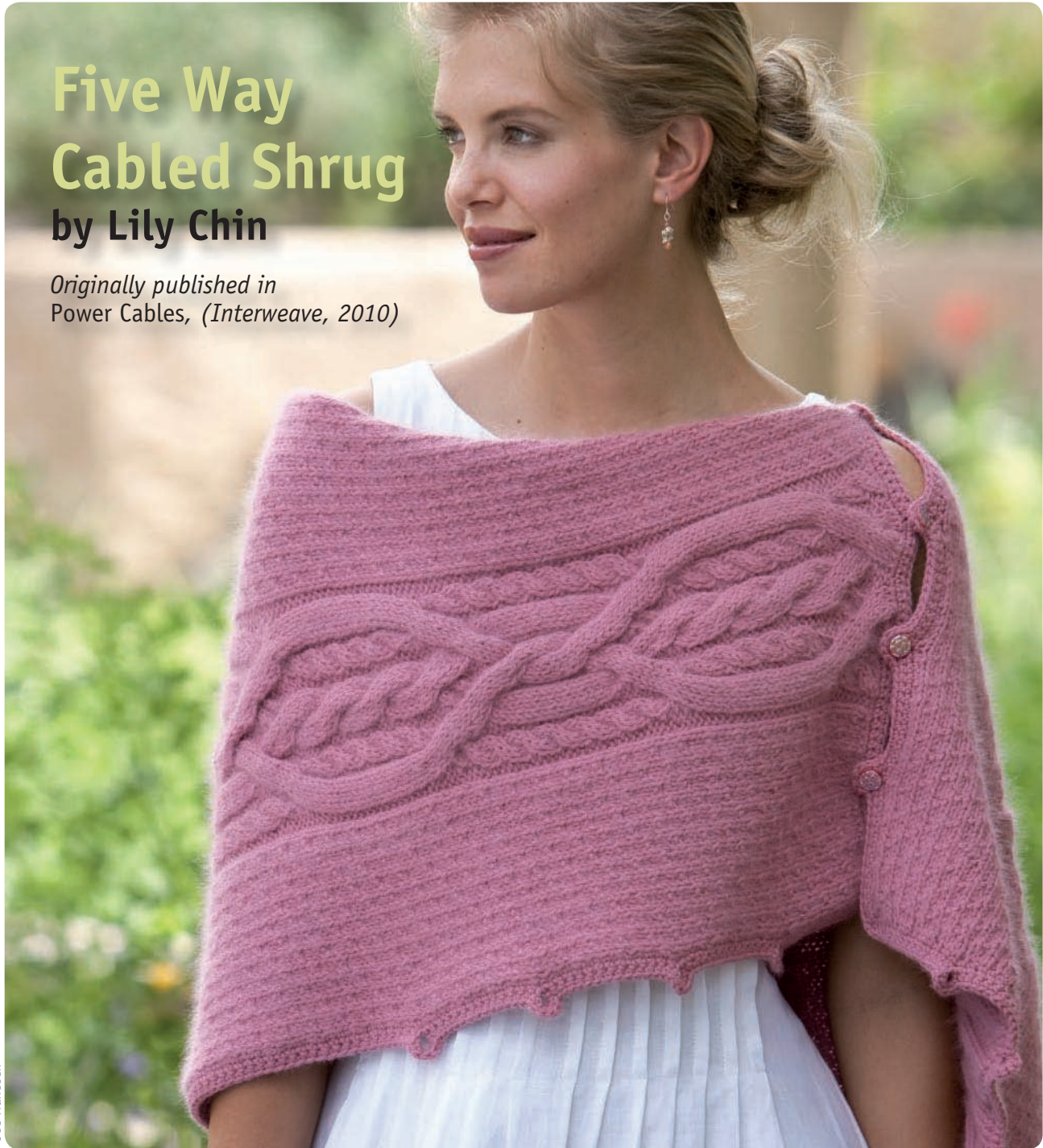


# Five Way Cabled Shrug

by Lily Chin


Originally published in  
*Power Cables*, (Interweave, 2010)



Joe Hancock

Copyright Interweave Press LLC. Not to be reprinted. All rights reserved.

Five Way Cabled Shrug originally published in *Power Cables*, Interweave, 2010. ©Interweave Press LLC. Not to be reprinted. All rights reserved.

 **INTERWEAVE**, publishers of *Interweave Knits* magazine...join the online knitting community at [KnittingDailyTV.com](http://KnittingDailyTV.com)  
Visit [InterweaveStore.com/knittingdailytv](http://InterweaveStore.com/knittingdailytv) for more great patterns!

# FIVE-WAY cabled shrug

This versatile piece will become a wardrobe staple as a shrug, wrap, poncho, or stole. With so many ways to wear it, it's good value and will stretch your wearing options—so indulge in some soft, touchable yarn and buttons you love. There are probably more than five ways to wear this accessory—how many more can you come up with?

## FINISHED SIZE

16" (40.5 cm) wide and 54" (137 cm) long.

## YARN

Worsted (Medium #4).

Shown here: Classic Elite Lush (50% angora, 50% wool; 123 yd [112 m]/50 g); Princess Pink #4489, 8 skeins.

## NEEDLES

U.S. size 9 (5.5 mm). Adjust needle size if necessary to obtain the correct gauge.

## NOTIONS

Stitch markers (m); twelve removable markers; cable needle (cn); size G/6 (4.00 mm) crochet hook; tapestry needle; twelve ½" (1.3 cm) buttons.

## GAUGE

38-st cabled center panel = 5¼" (13 cm).  
19 sts and 24 rows = 4" (10 cm) in scattered seed patt.

## stitch guide

**2/2RC (2 over 2 right cross):** Sl 2 sts to cn and hold in back of work, k2, k2 from cn.

**4/4LC (4 over 4 left cross):** Sl 4 sts to cn and hold in front of work, k4, k4 from cn.

**4/4RC (4 over 4 right cross):** Sl 4 sts to cn and hold in back of work, k4, k4 from cn.

### M1LP (make one left purlwise):

With left needle, pick up strand between last st worked and first st on left needle from front to back and purl into back of the lifted loop—1 st inc'd.

## NOTE

Markers indicate scattered seed st pattern at sides of cable. Slip markers (sl m) as you come to them.



### M1RP (make one right purlwise):

With left needle, pick up strand between last st worked and first st on left needle from back to front and purl into front of the lifted loop—1 st inc'd.

**M2P (make two purlwise):** With left needle, pick up strand between last st worked and first st on left needle from in front to back and purl into back and front of the lifted loop—2 sts inc'd.

## SHRUG

CO 86 sts.

**Row 1:** (RS) Work Right-Side Panel chart over first 24 sts, place marker (pm), work Center Cable Panel chart over next 38 sts, pm, work Left-Side Panel chart over last 24 sts.

Continue working respective patterns until piece measures 54" (137 cm) or desired length, ending after Row 43 of Central Cable Panel chart. BO in patt.

## FINISHING

Block piece to measurements. Weave in ends.

With crochet hook and RS facing, sc evenly around all edges, working ch 2 at corners, join with slip st to first sc. (See Glossary for crochet directions.) Using removable markers, mark for 4 buttons spaced 3" (7.5 cm) apart at one short end, mark for 4 buttons spaced 3" (7.5 cm) from end and 3" (7.5 cm) apart at lower left end of long edge, mark for 4 buttons spaced 3" (7.5 cm) from end and 3" (7.5 cm) apart at upper right end of long edge (see diagram).

**Next sc row:** Ch 1 and turn, sc in each sc and work 3 sc in each ch-2 corner space, work buttonhole loops of (sc, ch 5, sc) all in each sc on edge opposite buttons, join with slip st to first sc.

**Next sc row:** Ch 1 and turn, sc in each sc and work 5 sc in each ch-5 buttonhole

Five Way Cabled Shrug originally published in *Power Cables*, Interweave, 2010. ©Interweave Press LLC. Not to be reprinted. All rights reserved.

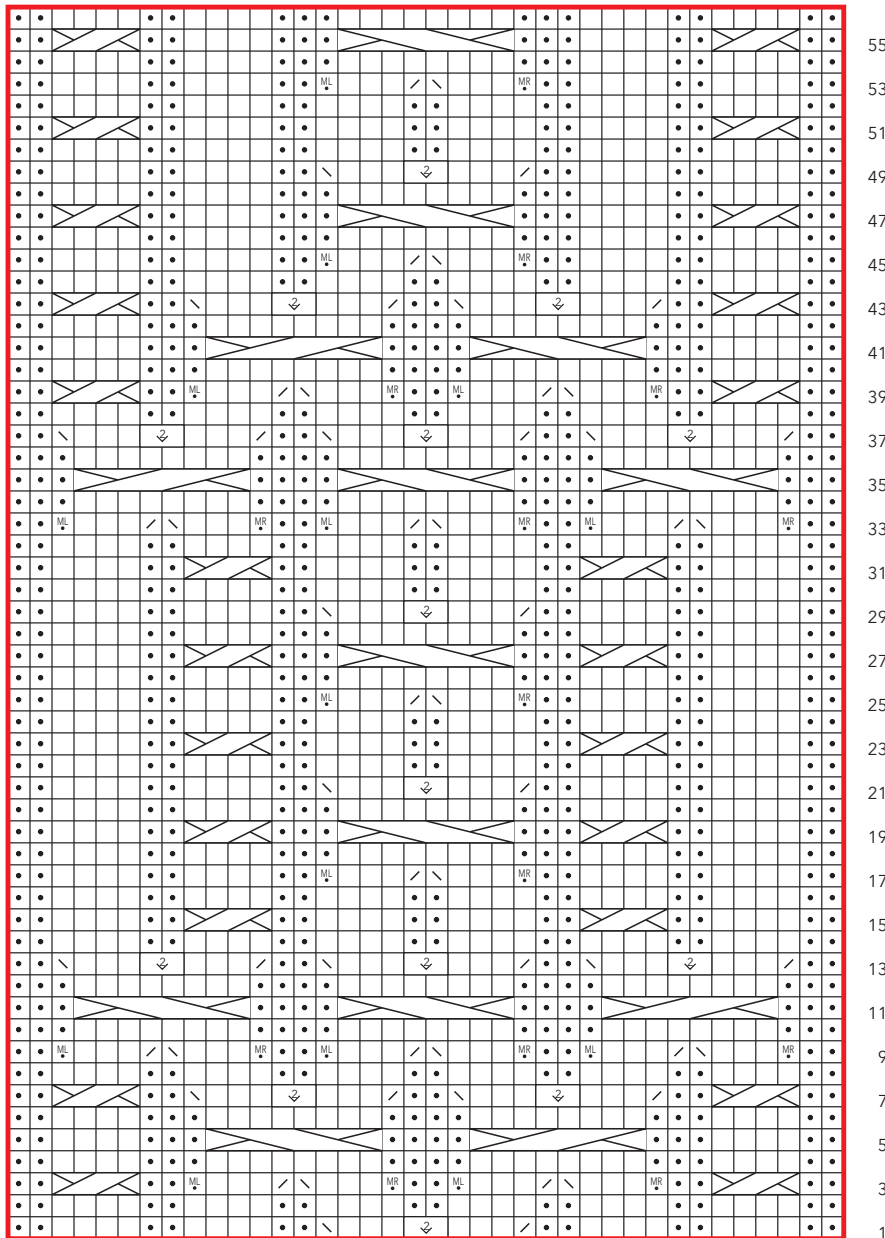


**INTERWEAVE**, publishers of *Interweave Knits* magazine...join the online knitting community at [KnittingDailyTV.com](http://KnittingDailyTV.com)  
Visit [InterweaveStore.com/knittingdailytv](http://InterweaveStore.com/knittingdailytv) for more great patterns!

loop, join with slip st to first sc, fasten  
and end off.

Attach buttons at marked places.

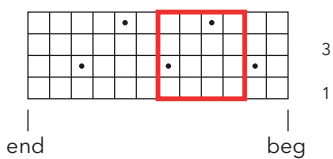
Center Cable Panel



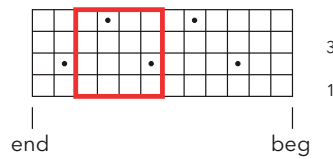
55  
53  
51  
49  
47  
45  
43  
41  
39  
37  
35  
33  
31  
29  
27  
25  
23  
21  
19  
17  
15  
13  
11  
9  
7  
5  
3  
1



Left-Side Panel

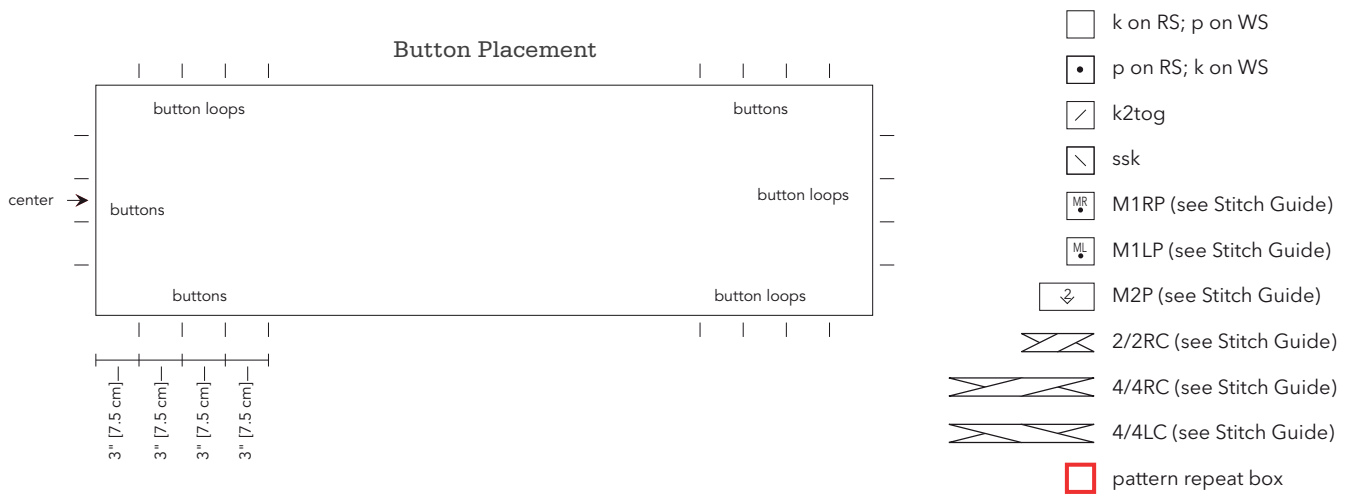


Right-Side Panel



Five Way Cabled Shrug originally published in *Power Cables*, Interweave, 2010. ©Interweave Press LLC. Not to be reprinted. All rights reserved.

**INTERWEAVE**, publishers of *Interweave Knits* magazine...join the online knitting community at [KnittingDailyTV.com](http://KnittingDailyTV.com)  
Visit [InterweaveStore.com/knittingdailytv](http://InterweaveStore.com/knittingdailytv) for more great patterns!



### Single Crochet (sc)

\*Insert hook in stitch, yarn over and pull up loop (Figure 1), yarn over and draw through both loops on hook (Figure 2) repeat from \*.

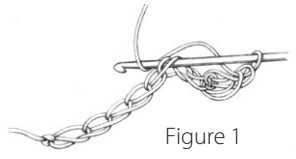


Figure 1

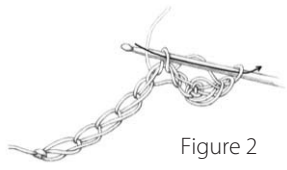
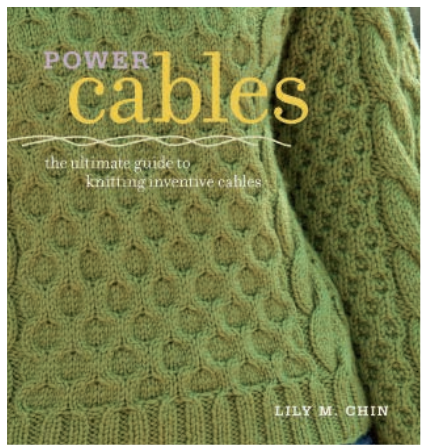


Figure 2

### Slip Stitch (sl st)

\*Insert hook in stitch, yarn over and draw loop through stitch and loop on hook; repeat from \*.



bookEXCERPT

Find more great designs in *Power Cables* published by Interweave Press (2010)



# RISK-FREE TRIAL OFFER

Discover knitwear designs that will capture your imagination.

Take advantage of this special risk-free offer today!

[interweave.com/go/kdiwk](http://interweave.com/go/kdiwk)

Five Way Cabled Shrug originally published in *Power Cables*, Interweave, 2010. ©Interweave Press LLC. Not to be reprinted. All rights reserved.

**INTERWEAVE**, publishers of *Interweave Knits* magazine...join the online knitting community at [KnittingDailyTV.com](http://KnittingDailyTV.com)  
 Visit [InterweaveStore.com/knittingdailytv](http://InterweaveStore.com/knittingdailytv) for more great patterns!