

Captured Beaded Ring

Right Angle Weave, Net Stitch



Aqua Ring—these are the bead colors used in the tutorial below:

- **Approximately 8-14** 4 mm Light Blue bicone crystals
- **1-2 g** size 11/0 Japanese #11-319G-TRI Iris Brown triangle seed beads
- **1 g** size 11/0 Matte Aqua round seed beads (11/0 aqua)
- **1g** size 11/0 Japanese #11-F17B Silver-Line Matte Dark Aqua or Teal round seed beads (11/0 dark aqua)
- **.5 g** Size 15/0 Miyuki #634 Silver-Lined Gold AB round seed beads (gold 15/0)
- **.5 g** size 15/0 Toho #15-T-27BDF Teal round seed beads, (15/0 teal)

Red and Gold Ring

- **Approximately 8-14** 4 mm faceted Garnet Czech Fire polished beads
- **1-2 g** size 11/0 Japanese Triangle #11-311-TRI Topaz Gold Luster triangle seed beads
- **1-2 g** size 11/0 Miyuki #457 Metallic Bronze permanent finish round seed beads (These were used for all size 11/0 beads in the ring)
- **1 g** size 15/0 Miyuki #634 Silver-Lined Gold AB round seed beads (These were used for all size 15/0 beads in the ring)

Dark Blue and Gold Ring:

- **Approximately 8-14** 4 mm faceted Garnet Czech Fire polished beads
- **1-2 g** 11/0 Japanese #11-319G-TRI Triangle Iris beads
- **1-2 g** size 11/0 Miyuki #11-455 Multi Iris permanent finish round seed beads (These were used for all size 11/0 beads in the ring)
- **1 g** size 15/0 Miyuki #634 Silver-Lined Gold AB seed beads (These were used for all size 15/0 beads in the ring)

If you are having a hard time finding the exact triangle beads, please visit Charlene's Beads.

****Note: You will need to keep your thread tight as you work and use your fingers as necessary to shape the sections as the triangles sometimes don't like to behave. Also, because you are working with size 15/0 beads, depending on the thread you are using will depend on how many times you can pass through the beads.**



1. String 2 aqua 11/0s, 1 triangle, and 2 aqua 11/0s 4 times, for a total of 12 beads.



2. Pass your needle through all bead just strung, starting through the where your tail thread is coming out from.



3. Pull your thread to create a ring. Make a knot with the tail thread and the working end of the thread to secure.



4. Pass through the very next triangle bead. For simplicity, position your piece where this triangle is at the top and the working thread is coming out the right side of the top triangle. I will refer to the triangles as top, left, bottom and right.



Round 1

5. String 1 gold 15/0, 1 dark aqua 11/0 and 1 gold 15/0; working clockwise, pass through the right triangle only.



6. String 1 gold 15/0, 1 dark aqua 11/0 and 1 gold 15/0. Pass through the bottom triangle only.



7. String 1 gold 15/0, 1 dark aqua 11/0 and 1 gold 15/0. Pass through the left triangle only.



8. String 1 gold 15/0, 1 dark aqua 11/0 and 1 gold 15/0. Pass through the top triangle only.



9. Pass through the first added gold 15/0 and dark aqua 11/0 embellishment added in Step 5. Pull thread snug. You may also start to shape this first round to sit on top of the aqua beads below.



Round 2

10. Continuing to work clockwise and string 1 triangle; pass through the second set of embellishments from Round 1.



11. String 1 triangle; pass through the third set of embellishments from Round 1.



12. String 1 triangle; pass through the fourth set of embellishments from Round 1.



13. String 1 triangle; pass through the first set of embellishments from Round 1.



14. Pass through the right triangle and the second set of embellishments. Pull thread snug. Shape with your fingers as needed.



Adding The Center Crystal

15. String a 4 mm crystal bead; working diagonally, pass through the fourth set of embellishment added in Round 1 and left triangle, working now in a counter-clockwise direction. Pull thread snug. This crystal will sit at an angle.



16. Pass through the third embellishment.



17. Pass through the center crystal bead .



18. Pass down the first set of embellishment and the right triangle, working in a clockwise direction. This should create an 'X' through the crystal and will center the crystal. Pull thread snug.



19. String 2 teal 15/0 beads; working clockwise, pass through the bottom triangle.



20. String 2 teal 15/0 beads; pass through the left triangle.



21. String 2 teal 15/0 beads; pass through the top triangle.



22. String 2 teal 15/0 beads; pass through the right triangle. Pull thread snug.



23. Pass through all triangles and 15/0 beads in this round 3 times, keeping thread pulled snug. This will reinforce and shape the top. You may also use your fingers to shape the piece. After the 3rd pass, weave through the bottom triangle.



24. Working in a half ladder stitch, pass down through the bottom triangle below the triangle your thread is coming out from, and through the aqua 11/0 to the right of it.



25. String 1 aqua 11/0, 1 triangle, 2 aqua 11/0s, 1 triangle, 2 aqua 11/0s, 1 triangle, and 1 aqua 11/0 beads for a total of 9 beads. You will be sharing 3 beads from the base of the previous section. You may pass back through all beads added again. If you try this and later gives you issues, just pass through the base once. Pass through the aqua 11/0, triangle and aqua 11/0 on the base of the previous section.



26. Working in a clockwise direction, pass through the first added aqua 11/0 and triangle.



Round 1

27. You will basically be repeating Round 1 from the previous section, but I am going to briefly going to go back through it since it will look a little different. Add the first gold 15/0, dark aqua 11/0 and gold 15/0 embellishment on the first corner.

28. Continue adding the gold 15/0 and dark aqua 11/0 embellishment to each corner. Pull thread snug.



Round 2

29. Add the first triangle to sit on top of the bottom base triangle. Continue to add triangles between each corner embellishment as done in Round 2 of the previous section for a total of 4 triangles. Pull thread snug.



30. Weave up through the top left corner embellishment.



Adding the Center Crystal

31. Add the 4MM crystal, making a criss cross or 'X' in the center, as done previously in Steps 15-18.



Round 3

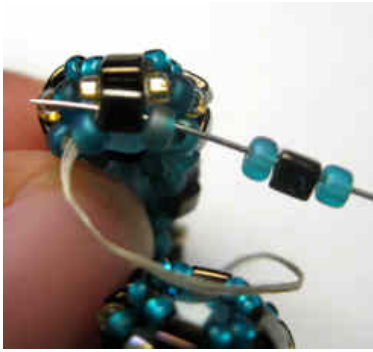
32. Weave through to the nearest triangle. String 2 teal 15/0s; pass through the next triangle working in the direction of where your thread is coming out from. Repeat between all 4 triangles.



33. Pass back through all teal 15/0 beads and triangles 3 times, if thread will allow. Weave down through to the base triangle and right aqua 11/0 in the base.



34. Continue adding sections to create a band. Make sure the band is as close as it can be to fit over the largest part of your finger MINUS one section (you will need to make your best judgement) and that it passes over your knuckle. A tad loose is always better than too tight. If it's a little more than a section that is needed, I will show you a minor adjustment you can do to make it fit.



35. If the band will almost fit with an additional section, but still a little tight, you may add an aqua 11/0, triangle and aqua 11/0 in a ladder stitch, using the end base and bottom aqua 11/0s and triangle bead. Continue to add these 3 beads in a ladder stitch until it reaches the desired length MINUS 1 section.

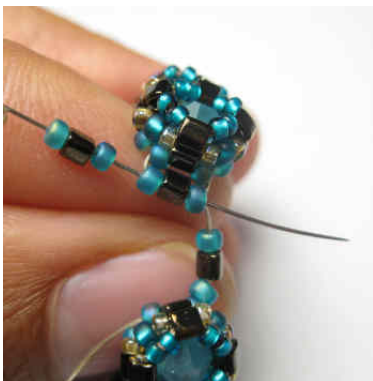


Joining the Ring Ends

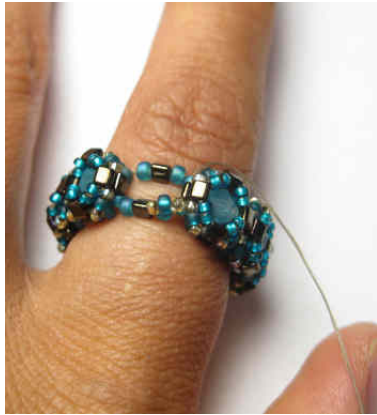
36. Pass through the end aqua 11/0, triangle and aqua 11/0 beads. This will be the top shared side of the final section. Bring the ends of the band together.



37. String 1 aqua 11/0, 1 triangle and 1 aqua 11/0; pass through the end aqua 11/0, triangle and aqua from the base of the opposite end of the band (this is now the bottom shared side). This will create the right side.



38. String 1 aqua 11/0, 1 triangle and 1 aqua 11/0; pass through the end aqua 11/0, triangle and aqua that you started out from in Step 37. This will create your last side. You should now have a square to embellish. Pull your thread.



39. Before you go too far on this final section, do another measurement around the biggest part of your finger to make sure it will fit with this last section added. If not, unwork this and add the ladder stitch section from Step 35.



40. Continue to embellish this section as you did in the previous sections. Pass through the nearest triangle.



41. Add your gold 15/0 and dark aqua 11/0 corner embellishments to each corner.



42. Add a total of 4 triangles between each corner embellishment that will sit on top of the triangles in the base below.



43. Add your 4 mm crystal.



44. Add the 2 teal 15/0s between each top triangle.



45. Pass through all teal 15/0s and triangles 3 times to reinforce and shape the top. Use your fingers to shape if needed. Make sure to keep your thread snug!

That's it! Please let me know if you have any questions or need help with any of the directions!