

Sweetheart Roses

Designs by Laura Kramer Doyle

A beautiful rose stitched on 14-count plastic canvas makes a great case and cover combo for your purse!



Materials

- Two 8¼ x 11-inch sheets of 14-count perforated plastic canvas

Sweetheart "Roses" projects were stitched using DMC floss.

Skill Level

**Average

Eyeglass Case Front & Back Stitch Count

54 wide x 95 high (each)

Approximate Design Size

- 11-count 5½" x 8¾"
- 14-count 4" x 7"
- 16-count 3½" x 6½"
- 18-count 3¼" x 5¾"
- 22-count 2¾" x 4½"

Checkbook Front & Back Stitch Count

49 wide x 90 high (each)

Approximate Design Size

- 11-count 8¾" x 4¾"
- 14-count 6¾" x 3¾"
- 16-count 5¾" x 3¼"
- 18-count 5½" x 2¾"
- 22-count 4¼" x 2¾"

Checkbook Flap Stitch Count

29 wide x 90 high (each)

Approximate Design Size

- 11-count 2¾" x 4¾"

- 14-count 2" x 3¾"
- 16-count 1¾" x 3¼"
- 18-count 1½" x 2¾"
- 22-count 1¾" x 2¾"

Instructions

1. For eyeglasses case, cut two pieces of canvas each 56 holes wide x 97 holes high. Center and stitch Eyeglasses Front and Eyeglasses Back onto canvas pieces using two strands floss for Cross-Stitch.

2. For checkbook front and back, cut two pieces of canvas each 51 holes high by 92 holes wide for front and back (A and B pieces). Center and stitch Checkbook Front and Checkbook Back onto 51-hole x 92-hole pieces of canvas using two strands floss for Cross-Stitch.

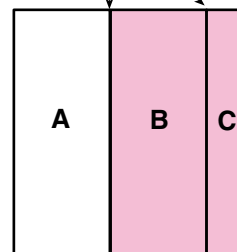
3. For checkbook flap, cut one piece of canvas 31 holes high by 92 holes wide (C piece). Center and stitch design using two strands floss.

Finishing

1. For eyeglasses case, hold front and back pieces wrong sides together. Whipstitch (see illustration) pieces together around sides and bottom edges using two strands medium rose floss. Overcast (see illustration) top edge using two strands floss.

2. For checkbook cover, hold A, B and C pieces wrong sides together according to Assembly Diagram. Whipstitch together using two strands medium pink floss. Fold inner flap C piece onto B piece (wrong sides will be together). Overcast all outer edges using two strands medium pink floss. ❖

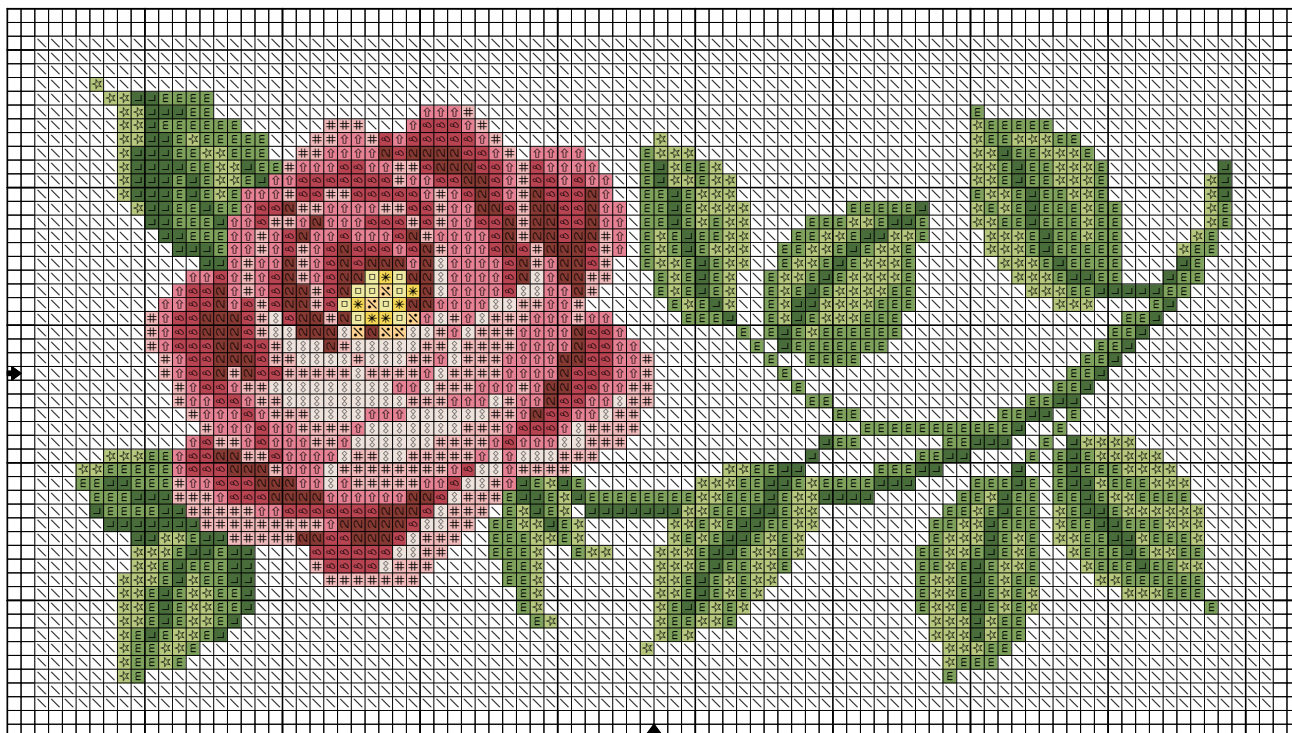
Assembly Diagram
Whipstitch



CROSS-STITCH (2X)

ANCHOR	DMC	COLORS
42	309	Dark rose
302	743	Medium yellow
300	745	Light pale yellow
24	776	Medium pink
307	783	Medium topaz
43	815	Medium garnet
271	819	Light baby pink
52	899	Medium rose
268	3345	Dark hunter green
266	3347	Medium yellow green
264	3348	Light yellow green
2	White	White

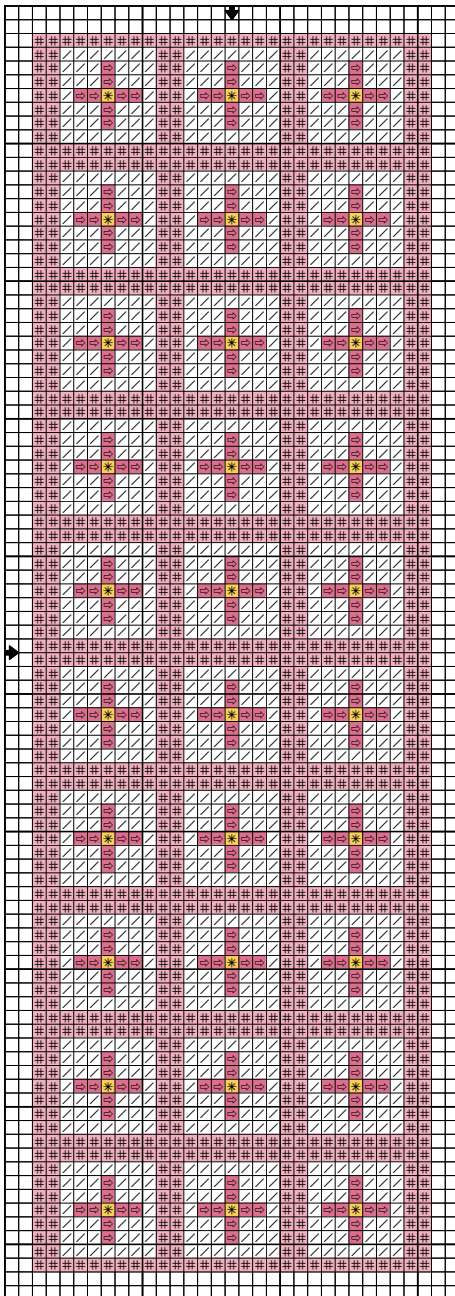
Checkbook Cover Front (A)



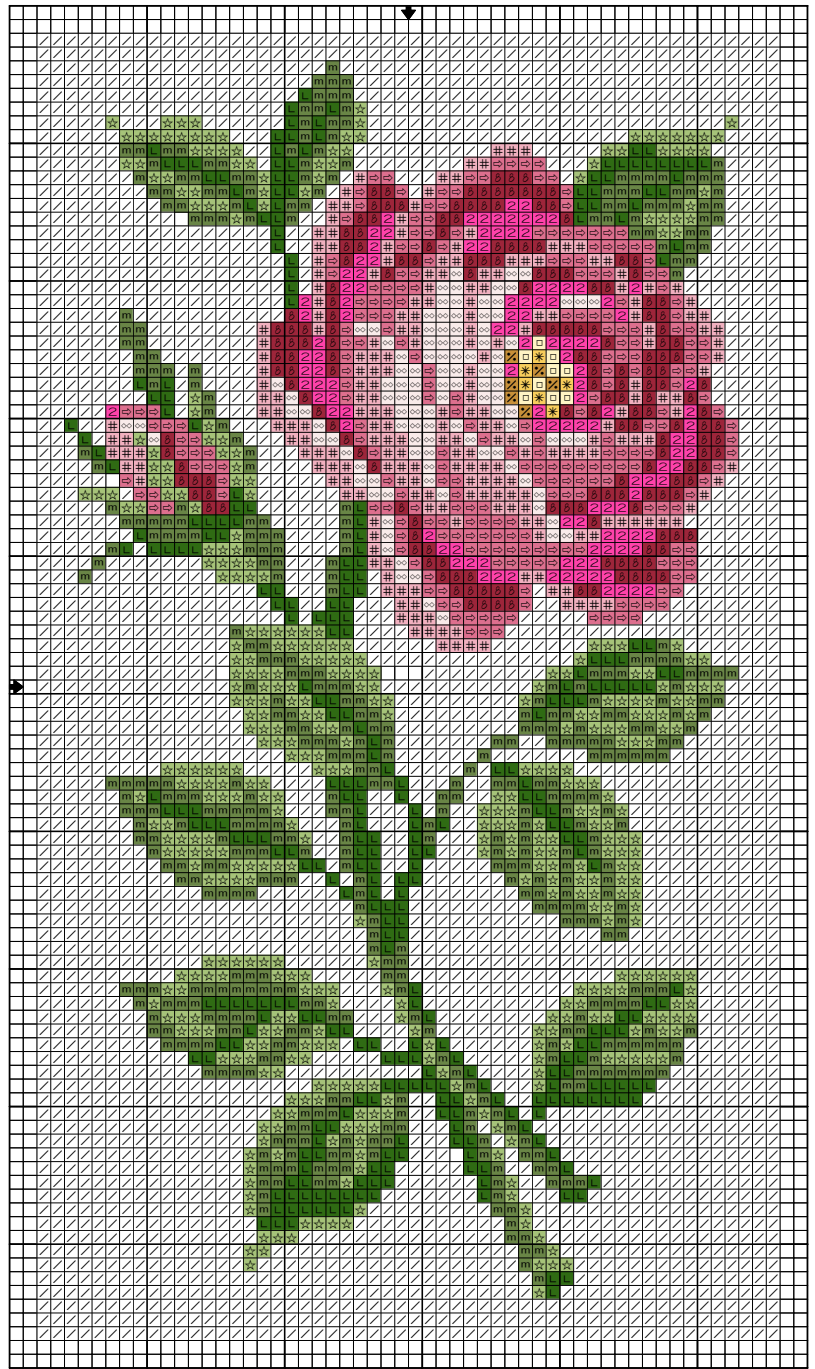
CROSS-STITCH (2X)

ANCHOR	DMC	COLORS
42		309 Dark rose
302		743 Medium yellow
300		745 Light pale yellow
24		776 Medium pink
307		783 Medium topaz
43		815 Medium garnet
271		819 Light baby pink
52		899 Medium rose
268		3345 Dark hunter green
266		3347 Medium yellow green
264		3348 Light yellow green
2		White White

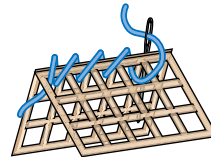
Checkbook Flap (C)



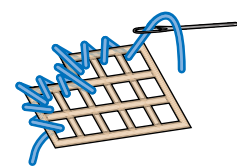
Eyeglass Case Front



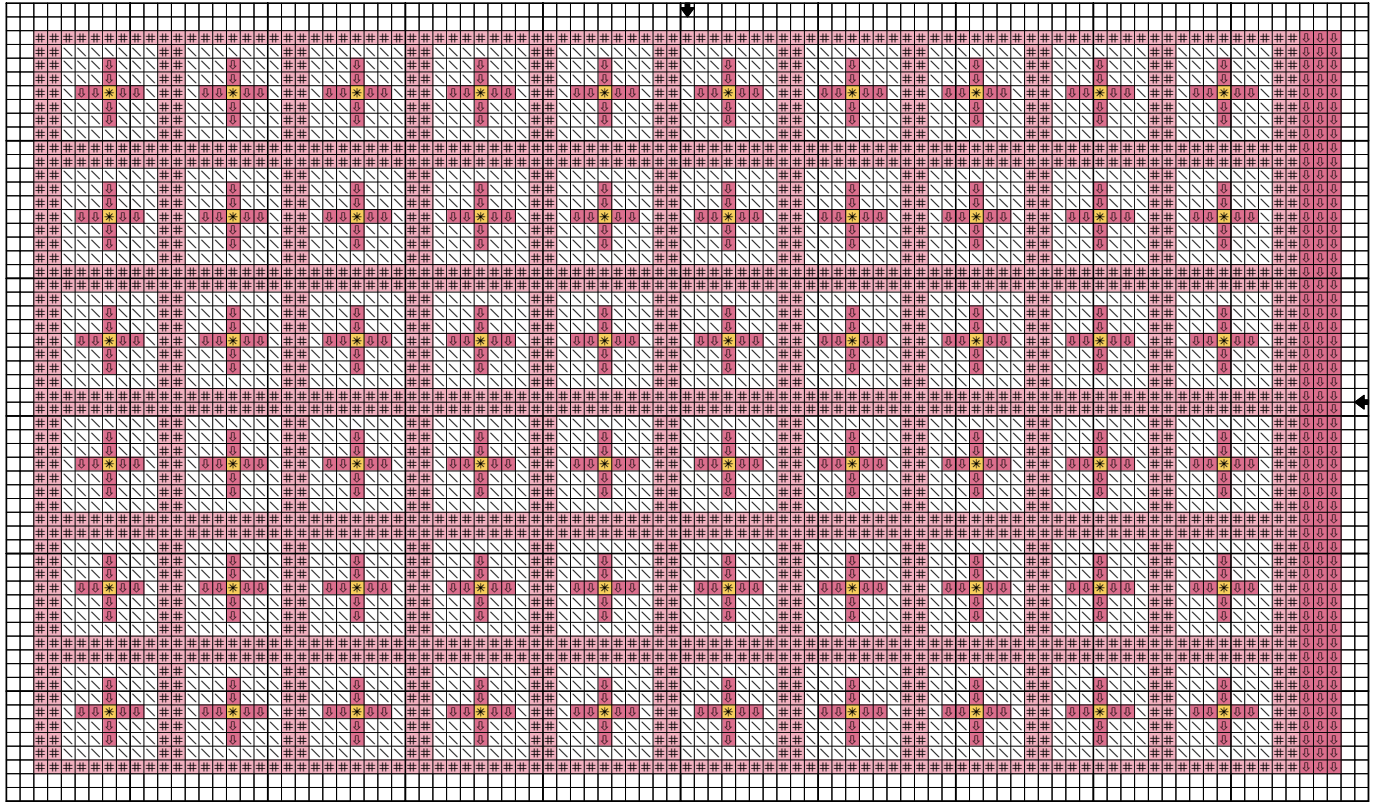
Whipstitch



Overcast



Eyeglass Case Back



Checkbook Cover Back (B)

