



## PATONS® CLASSIC WOOL WORSTED™ CHECK MATE FAIR ISLE HAT (TO KNIT)

### SIZE

One size to fit average man's head.

### MATERIALS

Patons® Classic Wool Worsted™ (100 g/3.5 oz; 192 m/210 yds)

Main Color (MC) Taupe (00227)	1	ball
Contrast A Natural Mix (00229)	1	ball
Contrast B Moss Heather (77525)	1	ball

Sizes 4 mm (U.S. 6) and 4.5 mm (U.S. 7) circular knitting needles 16" [40 cm] long. Set of four size 4.5 mm (U.S. 7) double-pointed knitting needles **or size needed to obtain tension**. Stitch marker.

### TENSION

20 sts and 26 rows = 4" [10 cm] with larger needles in stocking st.

### STITCH GLOSSARY

[www.patonsyarns.com/abbreviations](http://www.patonsyarns.com/abbreviations)

**Cont** = Continue(ity)

**K** = Knit

**K2tog** = Knit next 2 stitches together

**M1** = Make 1 stitch by picking up horizontal loop lying before next stitch and knitting into back of loop



**P** = Purl

**Pat** = Pattern

**Rem** = Remaining

**Rep** = Repeat

**Rnd(s)** = Round(s)

**Ssk** = Slip next 2 stitches knitwise one at a time. Pass them back onto left-hand needle, then knit through back loops together

**St(s)** = Stitch(es)

**Tog** = Together

**WS** = Wrong side

### INSTRUCTIONS

**Note:** When working from chart, carry yarn not in use loosely across WS of work but never over more than 5 sts. When it must pass over more than 5 sts, weave it over and under color in use on next st at center point of sts it passes over. The colors are never twisted around one another.

### HAT

With smaller circular needle and MC, cast on 100 sts. Join in rnd, placing marker on first st.

**1st to 4th rnds:** \*K2. P2. Rep from \* around.

Change to larger circular needle and proceed as follows:

**Next rnd:** With MC, (K25. M1) 4 times. 104 sts.

Proceed as follows:

**1st rnd:** Knit 1st row of Chart I, *reading row from right to left*, noting 13-st rep will be worked 8 times.

Chart I is now in position.

Cont working Chart I to end of chart. Rep 14 rnds of Chart I once more.

**Shape top:** Knit Chart II to end of chart, *reading rows from right to left* and shaping top as follows:

**Note:** Change to set of four double-pointed needles when necessary.

**1st rnd:** Knit 1st row of Chart II, *reading row from right to left*, noting 13-st rep will be worked 8 times.

**2nd rnd:** \*ssk. Pat across 8 sts. K2tog. With MC, K1. Rep from \* 7 times more. 88 sts.

**3rd and 4th rnds:** Knit in pat.

**5th rnd:** \*ssk. Pat across 6 sts. K2tog. With MC, K1. Rep from \* 7 times more. 72 sts.

**6th and 7th rnds:** Knit in pat.

**8th rnd:** \*ssk. Pat across 4 sts. K2tog. With MC, K1. Rep from \* 7 times more. 56 sts.

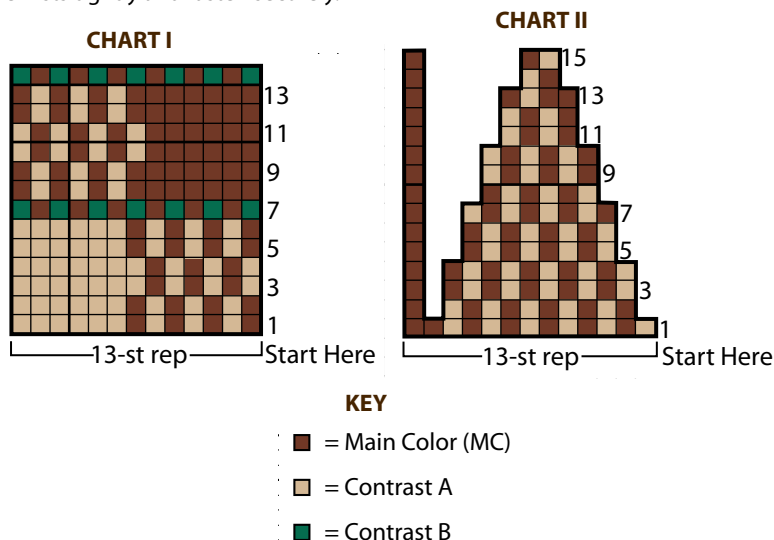
**9th and 10th rnds:** Knit in pat.

**11th rnd:** \*ssk. Pat across 2 sts. K2tog. With MC, K1. Rep from \* 7 times more. 40 sts.

**12th and 13th rnds:** Knit in pat.

**14th rnd:** \*ssk. K2tog. With MC, K1. Rep from \* 7 times more. 24 sts.

**15th rnd:** Knit in pat. Break yarn, leaving a long end. Draw end through rem sts tightly and fasten securely.



**Patons®**  
Classic Wool  
WORSTED™

...a part of your life.

P.O. Box 40, Listowel ON N4W 3H3

[www.patonsyarns.com](http://www.patonsyarns.com)



CHECK MATE FAIR ISLE HAT

1 of 1