



PROJECT:

09

TITLE:

Blossom Handbag/ Shoulder Bag

DIFFICULTY / ADVANCED

Incredible lines and details make this semisoft bag a true showstopper. Handbag or shoulder bag—you choose!—it has both room and high fashion to spare. Multiple pockets on the interior of the large main compartment keep everything in place. (Only your sewing-savvy friends will believe you made it.)





FINISHED SIZES

Handbag

14" (35.6 cm) wide across the flap [15" (38.1 cm) wide across the bottom] x 8¹/₄" (21 cm) tall [13³/₄" (34.9 cm) tall with short handles] x 6" (15.2 cm) deep

Shoulder bag

14" (35.6 cm) wide across the flap [15" (38.1 cm) wide across the bottom] x 8¹/₄" (21 cm) tall [17³/₄" (45.1 cm) tall with long handles] x 6" (15.2 cm) deep

FABRICS

- 1¹/₄ yd (1.14 m) of 54" (137 cm) wide mid-weight Home Dec print for the exterior
- 3³/₄ yd (0.69 m) of 54" (137 cm) wide coordinating mid-weight Home Dec print for the lining
- 7⁷/₈ yd (0.8 m) of 44" (112 cm) wide light- to mid-weight coordinating solid fabric for the divider panels

OTHER SUPPLIES

- 3 yd (2.74 m) of 20" (50.8 cm) wide fusible woven interfacing (I use Shape Flex SF-101 by Pellon)
- 2¹/₈ yd (1.94 m) of 20" (50.8 cm) wide Peltex #70 by Pellon or a similar extra-heavy stabilizer
- One 12" (30.5 cm) coordinating zipper (I use Coats brand)
- One size 3³/₄" (1.9 cm) magnetic snap (I use Prym-Dritz brand)
- 1 spool coordinating all-purpose thread (I use Coats Dual Duty XP)

See Basic Tools Needed for Each Project (page 14).

ADDITIONAL TOOLS NEEDED

- Masking tape
- Marker
- Hand sewing needle
- Safety pin
- Zipper foot for your sewing machine



Follow these instructions to make either size handle. Any measurement changes will be noted in the specific step.

1

CUT OUT THE PATTERN PIECES.

From the pattern sheet included with this book, cut out

- Main panel
- Divider panel
- Flap
- Handle bracket
- Side panel

2

CUT OUT ALL OF THE PIECES FROM THE FABRIC.

Tip: Using a piece of masking tape and a marker, write the name of each panel on the tape and place it on the individual fabric pieces to identify them.

a. Fold the fabrics in half lengthwise, **Wrong** sides together, matching the selvage edges,* and gently press a crease. Open the fabric and then fold the edges in 9" (23 cm) toward the **Wrong** side. This will give you enough folded edges to cut out all the pieces.

From the exterior fabric

- Cut 2 main panels on the fold*
- Cut 2 flaps on the fold
- Cut 2 side panels on the fold
- Cut 4 handle brackets

b. Open the fabric. Using a ruler and fabric marker, measure and mark the dimensions below directly onto the **Right** side of a single layer of fabric. Then, cut along the marked lines.

- Cut 1 bottom panel: 4½" (11.4 cm) wide x 16" (40.6 cm) long
 - Cut 4 tags: 2" (5.1 cm) wide x 2½" (6.4 cm) long
 - Cut 4 tie ends: 2" (5.1 cm) wide x 6½" (16.5 cm) long
 - Cut 2 short handles for handbag: 4½" (11.4 cm) wide x 22" (55.9 cm) long
- OR
- Cut 2 long handles for shoulder bag: 4½" (11.4 cm) wide x 30" (76.2 cm) long

From the lining fabric

- Cut 2 main panels on the fold
- Cut 2 side panels on the fold

c. Open the fabric. Measure and mark the dimensions for the bottom panel directly onto the **Right** side of a single layer of fabric. Then, cut along the marked lines.

- Cut 1 bottom panel: 4½" (11.4 cm) wide x 16" (40.6 cm) long

From the light- to mid-weight solid fabric

- Cut 8 divider panels on the fold

d. Use the panels you have cut out as full-size pattern pieces to cut the interfacing and Peltex.

From the fusible interfacing

- Cut 2 main panels
- Cut 2 flaps
- Cut 2 side panels
- Cut 4 divider panels
- Cut 4 handle brackets
- Cut 1 bottom panel
- Cut 4 tie ends
- Cut 2 handles

From the Peltex

- Cut 2 main panels
- Cut 1 flap
- Cut 2 side panels
- Cut 4 divider panels

e. On the Peltex main and side panels, the flap, and all 4 divider panels, using your ruler and marker, measure $\frac{1}{2}$ " (1.3 cm) in around the outside edges, and mark. Draw a line connecting the marks. Cut along the marked lines completely around each panel. This will reduce bulk in the seam allowances.

f. Measure and mark the dimensions below directly on the Peltex. Then, cut along the marked lines.

- Cut 1 bottom panel: $3\frac{1}{2}$ " (8.9 cm) wide x 15" (38.1 cm) long
 - Cut 2 short handle inserts: $1\frac{1}{8}$ " (2.9 cm) wide x 21" (53.3 cm) long
- OR
- Cut 2 long handle inserts: $1\frac{1}{8}$ " (2.9 cm) wide x 29" (73.7 cm) long

3

APPLY THE FUSIBLE INTERFACINGS.

Note: See page 172 for interfacing application tips.

a. On a flat surface, center the Peltex main panel on the **Wrong** side of the first exterior main panel, leaving $\frac{1}{2}$ " (1.3 cm) of the fabric showing around the outside edges.

b. Place the fusible side of the interfacing main panel onto the Peltex. Using a damp pressing cloth,* fuse it in place, sealing the edges and securing the Peltex. Turn the panel over and press it again, making sure there are no puckers.

c. Repeat steps 3a and 3b to attach the Peltex and interfacing to the second main panel, both exterior side panels, the bottom panel, 4 divider panels, and one of the flaps.

d. Place the fusible side of the second flap interfacing onto the **Wrong** side of the second flap. Match the edges and fuse it in place. This will be the lining flap.

e. Repeat step 3d to fuse the coordinating interfacing pieces to both handles, all 4 handle brackets, and the tie ends.

4

INSTALL THE MAGNETIC SNAP.

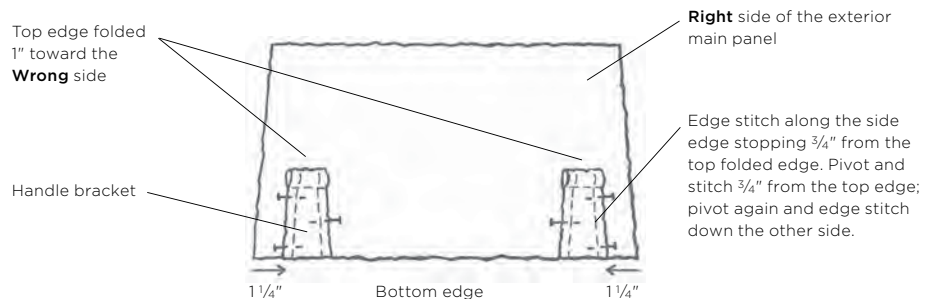
- a. Fold the lining flap in half, **Right** sides together, matching the side edges. Gently press a crease along the folded edge. Open the flap.
- b. Measure $1\frac{1}{2}$ " (3.8 cm) up on the crease from the center rounded edge and make a mark.
- c. Center the male half of the magnetic snap over the crease and above the $1\frac{1}{2}$ " (3.8 cm) mark. Install the snap, following the manufacturer's instructions.
- d. Repeat step 4a to mark the center of the front exterior main panel.
- e. On the **Right** side of the exterior main panel, measure and mark $3\frac{1}{2}$ " (8.9 cm) down from the top edge on the center crease.
- f. Center the female half of the snap over the crease and below the $3\frac{1}{2}$ " (8.9 cm) mark. Install the snap.

5

MAKE AND ATTACH THE HANDLE BRACKETS TO THE EXTERIOR MAIN PANELS.

- a. Fold both long side edges of the first handle bracket $\frac{1}{2}$ " (1.3 cm) in toward the **Wrong** side, and press.
- b. Topstitch* $\frac{3}{8}$ " (1 cm) from each folded edge and backstitch* at each end.
- c. Fold the top edge 1" (2.5 cm) toward the **Wrong** side and pin it in place.
- d. Place the bracket onto the **Right** side of the front exterior main panel, matching the bottom edges. Place the outside edge of the bracket $1\frac{1}{4}$ " (3.2 cm) from the right edge of the main panel and pin it in place.

Figure 1



- e. Starting at the bottom of the bracket, edge stitch* up along the side edge, stopping $\frac{3}{4}$ " (1.9 cm) from the top edge. Pivot* and stitch $\frac{3}{4}$ " (1.9 cm) from the top folded edge; pivot again and edge stitch down the other side. Backstitch at each end.

f. Repeat steps 5a through 5e to make and attach a second bracket to the left bottom corner on the front main panel. Then, attach the last 2 brackets to both bottom corners on the back main panel.

6

MAKE THE HANDLES.

- a. Fold the first handle in half lengthwise, **Wrong** sides together, and press a crease along the folded edge.
- b. Open the handle. Fold each long edge in to meet the center crease, and press.
- c. Tuck the Peltex handle insert under one of the folded edges, leaving $\frac{1}{2}$ " (1.3 cm) of the handle showing on each end of the Peltex.
- d. Fold the handle in half again at the center crease, enclosing the raw edges. Press and pin.
- e. Edge stitch down both folded edges and backstitch at each end.
- f. Repeat steps 6a through 6e to make the second handle.

7

MAKE THE TIE ENDS.

Repeat steps 6a, 6b, 6d, and 6e to make all 4 tie ends.

8

INSERT THE TIE ENDS INTO THE BRACKETS.

- a. Attach a safety pin to one end of the first tie.
- b. Pull the tie through one bracket, centering it within the bracket. Remove the safety pin.
- c. Repeat steps 8a and 8b to insert the next three tie ends into the other three brackets.

9

ATTACH THE HANDLES AND TIE ENDS TO THE MAIN PANELS.

- a. Match the ends of the first tie and place them onto the end of one handle, overlapping by $\frac{1}{2}$ " (1.3 cm). Be careful not to twist the tie. Pin the ends in place. Stitch across the ends of the handle and the tie. Backstitch at each end. (See Figure 2.)
- b. Trim the raw ends of the tie to $\frac{1}{8}$ " (0.3 cm).
- c. Place this end of the handle onto the main panel, centering the handle $\frac{1}{4}$ " (3.2 cm) up from the folded end of the handle bracket. Pin in place. Using a tight, wide zigzag stitch, satin stitch across the end of the tie end to secure it in place and conceal the raw edges. Backstitch at each end.
- d. Repeat steps 9a through 9c to attach the other end of the handle to the tie on the opposite side of the same main panel. Be careful not to twist the handle.
- e. Repeat steps 9a through 9d to attach the second handle to the remaining ties on the other main panel.

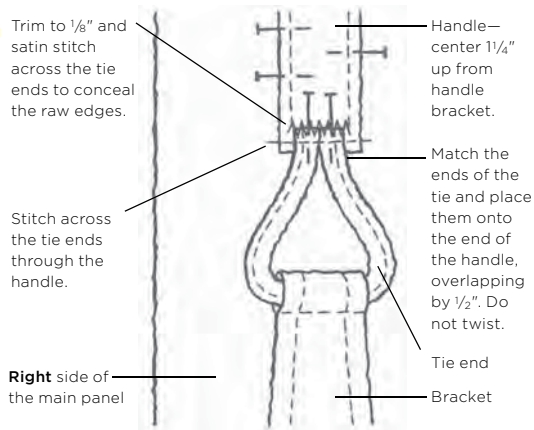


Figure 2

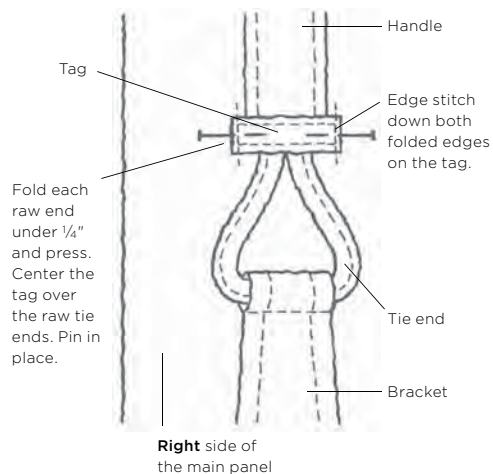


Figure 3

10 MAKE AND ATTACH THE TAGS.

- Repeat steps 6a, 6b, 6d, and 6e to make all 4 tags to cover the stitching that attaches the tie to the handle.
- Fold the first tag under $\frac{1}{4}$ " (0.6 cm) on each raw end and press in place.
- Center the tag over the stitching that attached the handle and ties together, and pin in place. (See Figure 3.)
- Edge stitch down both folded edges to attach the tag. Backstitch at each end.
- Repeat steps 10b through 10d to attach the other 3 tags to cover the stitching that attaches the ties to the handles.

11 MAKE THE EXTERIOR.

- Place the bottom edge of the front main panel and one long edge of the bottom panel **Right** sides together and pin in place. Stitch a $\frac{1}{2}$ " (1.3 cm) seam across the pinned edge. Backstitch at each end. Press the seam allowances* toward the bottom panel.
- Repeat step 11a to attach the back main panel to the other long edge of the bottom panel.

c. Place the side edges of the first side panel **Right** sides together with the main and bottom panels, matching the top edges. Pin the panels together, easing the main panel around the curved edge of the side panel. Stitch a $\frac{1}{2}$ " (1.3 cm) seam down the pinned edges, starting and stopping at the top edges on the main panels. Backstitch at each end.

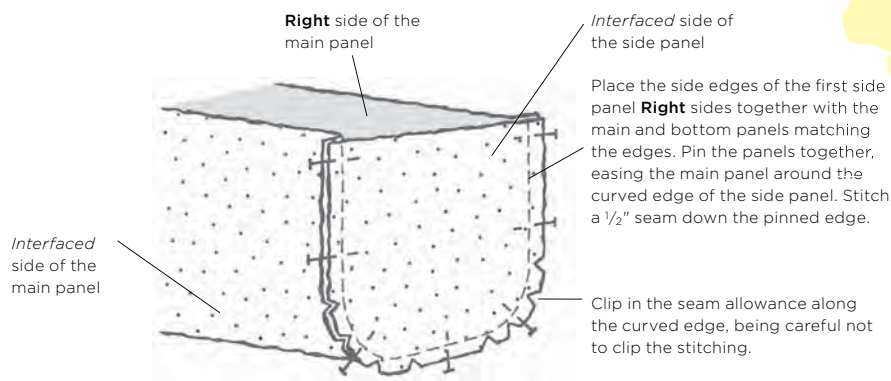


Figure 4

- d. Repeat step 11c to attach the second side panel to the other side edges on the main and bottom panels.
- e. Clip* in the seam allowance along the curved edge, being careful not to clip your stitching. Please set the exterior aside.

12

MAKE THE FLAP.

- a. Place the exterior and lining flaps **Right** sides together, matching the edges, and pin them in place.
- b. Stitch a $\frac{1}{2}$ " (1.3 cm) seam around the pinned edges, leaving an 8" (20.3 cm) opening centered on the long straight edge of the flap. Backstitch at each end.
- c. Trim* the corners in the seam allowance making sure not to clip the stitching. Then, trim the seam allowance to $\frac{1}{4}$ " (0.6 cm) along the rounded corners and across the front rounded edge.
- d. Clip in the seam allowance around the curved edges every $\frac{1}{2}$ " to $\frac{3}{4}$ " (1.3 cm to 1.9 cm) to allow the flap to lay flat when turned **Right** side out.
- e. Turn the flap **Right** side out, using a turning tool* to gently push out the corners, and press.
- f. Fold each side of the opening under $\frac{1}{2}$ " (1.3 cm) toward the **Wrong** side, and press. Pin the edges together. Edge stitch $\frac{1}{8}$ " (0.3 cm) from the finished edge completely around the flap. This will close the opening and secure the Peltex inside.

Please set the flap aside.

13 MAKE THE LINING FOR THE BAG.

Repeat steps 11a through 11e to make the lining for the bag.

14 ATTACH THE LINING TO THE EXTERIOR.

- With the exterior **Right** side out and the lining **Wrong** side out, slip the lining over the exterior, matching the top edges and side seams. Tuck the handles down between the two layers and pin in place.
- Stitch a $\frac{1}{2}$ " (1.3 cm) seam around the top edge, leaving a 10" (25.4 cm) opening centered along the back main panel. Backstitch at each end.
- Turn the bag **Right** side out through the opening along the back main panel. Push the lining down inside. Gently push out the seams and press along the top edge.
- Fold each side of the opening under $\frac{1}{2}$ " (1.3 cm) toward the **Wrong** side, and press. Pin it together. Edge stitch completely around the top edge and backstitch at each end.

15 ATTACH THE FLAP TO THE BACK OF THE BAG.

- Using your ruler and fabric marker, measure and mark $1\frac{1}{2}$ " (3.8 cm) in from each side edge along the long straight edge on the exterior flap.
- Measure and mark $\frac{3}{4}$ " (1.9 cm) down from the top edge on each end of the back of the bag. Line up the two marks and draw a line connecting them.
- Center the long straight edge of the flap along the marked line on the back of the bag and pin it in place.
- Starting at the first $1\frac{1}{2}$ " (3.8 cm) mark on the flap, edge stitch over the existing stitching, stopping at the mark on the opposite side. Backstitch at each end.
- Topstitch $\frac{3}{8}$ " (1 cm) from the first stitching line, starting and stopping at the $1\frac{1}{2}$ " (3.8 cm) marks. Then, again topstitch $\frac{3}{8}$ " (1 cm) from the second stitching line, making sure to catch the top edge of the bag underneath. Backstitch at each end.

Please set the bag aside.

16 MAKE THE DIVIDERS.

- Place one *interfaced* divider panel and one without interfacing **Right** sides together, matching all the edges. Pin in place.
- Stitch a $\frac{1}{2}$ " (1.3 cm) seam around the panels, leaving a 10" (25.4 cm) opening centered along the bottom edge. Backstitch at each end.
- Trim all the corners in the seam allowance, making sure not to clip your stitching.

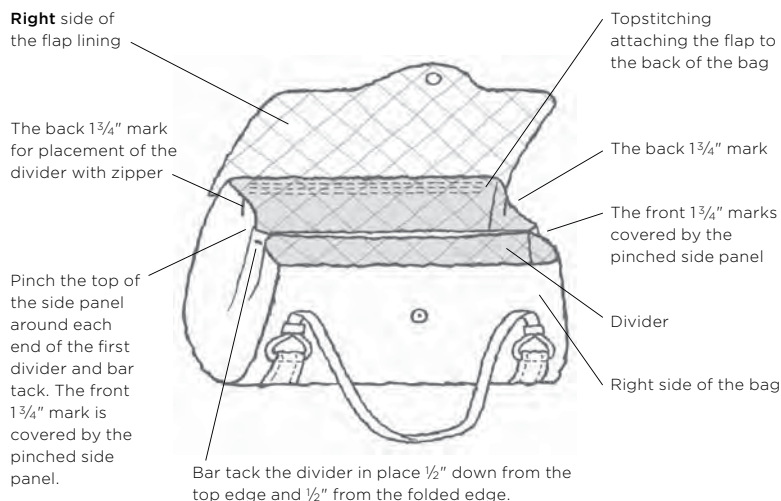
- d. Turn the divider panel **Right** side out through the opening. Use a turning tool to gently push out the corners. Press the panel flat. Fold each edge of the opening under $\frac{1}{2}$ " (1.3 cm) toward the **Wrong** side, and press. Pin the opening closed. **Note: You will stitch the opening closed in step 16g.**
- e. Repeat steps 16a through 16d to make a second divider panel.
- f. Place both divider panels together. Match and then pin around all the edges.
- g. Edge stitch close to the finished edges, down both sides and across the bottom edges. Backstitch at each end. You have completed the first divider. Set this divider aside while you make one with a zipper closure.
- h. On the third *interfaced* divider panel, place the zipper and panel **Right** sides together, with the edge of the zipper tape $\frac{1}{4}$ " (0.6 cm) down from the top edge of the panel. Align the head of the zipper $\frac{1}{2}$ " (1.3 cm) from the side edge and pin it in place. Fold the end of the tape so it angles off the top edge of the divider panel on each end of the zipper.
- i. Using the zipper foot for your machine, stitch $\frac{1}{8}$ " (0.3 cm) from the coils. Backstitch at each end.
- j. Place this divider panel and one without interfacing **Right** sides together, matching the edges, and pin. **Note: The zipper is sandwiched between the panels.** On the *interfaced* side of the divider panel, stitch a $\frac{1}{2}$ " (1.3 cm) seam around the panels leaving a 10" (25.4 cm) opening centered along the bottom edge. Backstitch at each end.
- k. Trim the corners in the seam allowance, making sure not to clip your stitching.
- l. Turn the divider panel **Right** side out, pulling out the zipper through the opening. Use a turning tool to gently push out the corners. Press the panel flat. Fold each edge of the opening under $\frac{1}{2}$ " (1.3 cm) toward the **Wrong** side, and press. Pin the opening closed. **Note: You will stitch the opening closed in step 16o.**
- m. Repeat steps 16h through 16l to make and attach the last two divider panels onto the other long edge of the zipper.
- n. Place both divider panels together, with the **Right** side of the zipper on the top outside edge. Pin down the sides and across the bottom edges of the divider.
- o. Edge stitch close to the finished edges down the sides and across the bottom edges. Backstitch at each end.

17

ATTACH THE DIVIDERS TO THE INSIDE OF THE BAG.

a. Working on one of the exterior side panels, measure $1\frac{3}{4}$ " (4.4 cm) in from both the front and back seams across the top finished edge of the side panel, and mark. Repeat to mark the same measurements on the second side panel. You will attach the divider without the zipper between the front set of marks and the zippered divider between the back set.

Figure 5



b. Place the divider without a zipper inside the bag. Line up each end of the divider with the two front marks. Then, pinch the top of the side panel around each end of the divider and pin through all the layers.

c. Bar tack* the divider in place, $\frac{1}{2}$ " (1.3 cm) down from the top edge and $\frac{1}{2}$ " (1.3 cm) in from the folded edge. If the fabric layers are too thick for your machine, bar tack by hand with a double strand of thread, stitching a few times in place. Tie off securely.

d. Repeat steps 17b and 17c to attach the zippered divider between the back set of marks.

Your Blossom Bag is complete! Show your new custom designer handbag to the world—you can bet nobody else has one just like it.

TOP

**BLOSSOM HANDBAG/SHOULDER BAG
DIVIDER PANEL**

Cut 8 from the light-to mid-weight fabric on the fold

Use the panels you have just cut as full-size pattern pieces

Cut 4 from the fusible woven interfacing

Cut 4 from the Peltex®

Place this edge on the fold of the fabric



TOP

**BLOSSOM HANDBAG/SHOULDER BAG
FLAP**

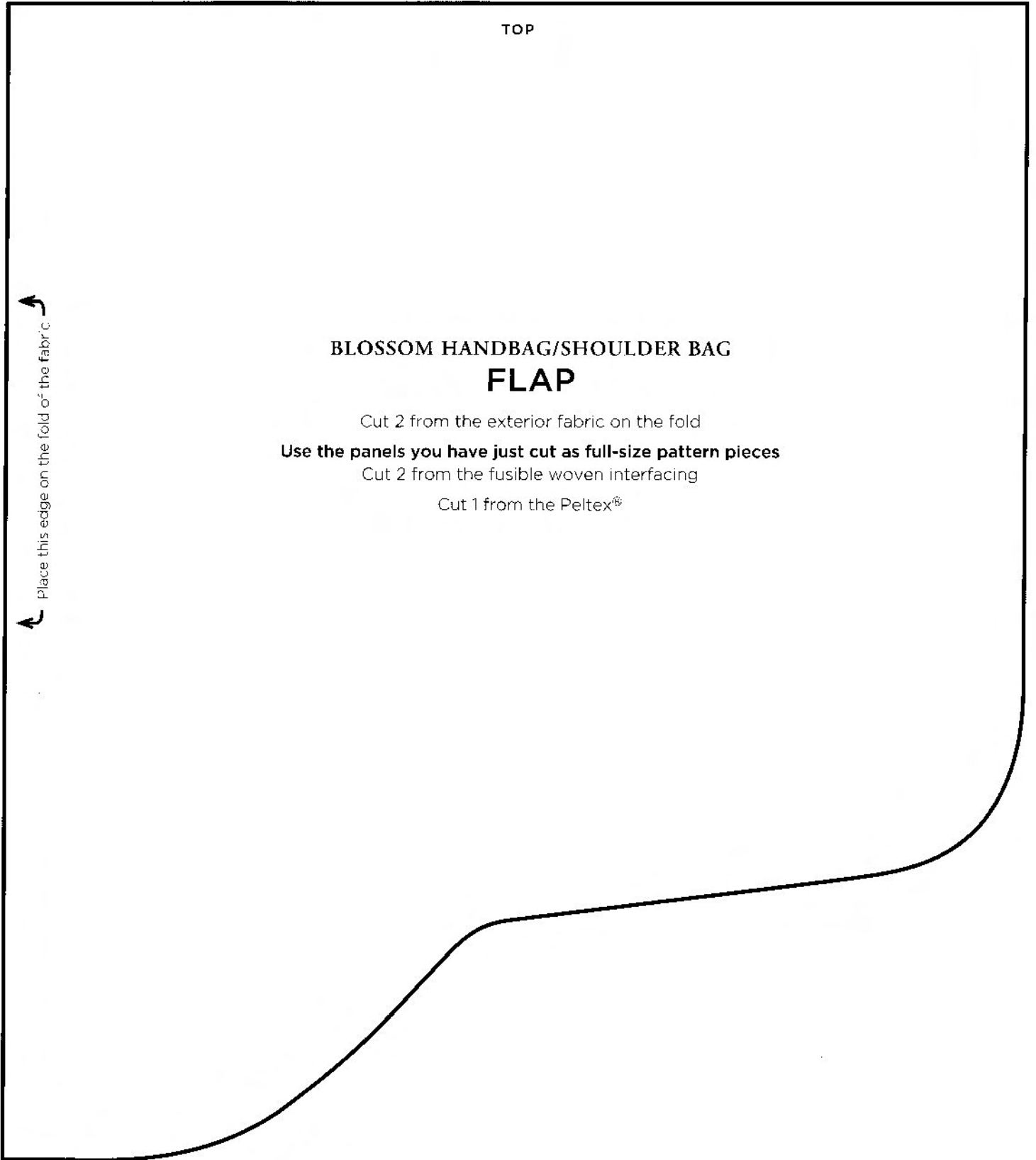
Cut 2 from the exterior fabric on the fold

Use the panels you have just cut as full-size pattern pieces

Cut 2 from the fusible woven interfacing

Cut 1 from the Peltex®

Place this edge on the fold of the fabric.



TOP

**BLOSSOM HANDBAG / SHOULDER BAG
SIDE PANEL**

Cut 2 from the exterior fabric on the fold

Cut 2 from the lining fabric on the fold

**Use the panels you have just cut
as full-size pattern pieces**

Cut 2 from the fusible woven interfacing

Cut 2 from the Peltex[®]

Place this edge on the fold of the fabric

TOP

**BLOSSOM HANDBAG/
SHOULDER BAG
HANDLE BRACKET**

Cut 4 from the exterior fabric

Cut 4 from the fusible woven interfacing

TOP

**BLOSSOM HANDBAG/SHOULDER BAG
MAIN PANEL**

Cut 2 from the exterior fabric on the fold

Cut 2 from the lining fabric on the fold

Use the panels you have just cut as full-size pattern pieces

Cut 2 from the fusible woven interfacing

Cut 2 from the Peltex®

Place this edge on the fold of the fabric

