

Marilyn's Slim Fit Peasant Dress and Top

By: Create Kids Couture



Difficulty Level: Beginner

Materials Needed:

- Fabric (see chart below for quantities needed)
- Scissors or Rotary Cutter
- Cutting Mat if using Rotary Cutter
- Ruler
- Pins
- Sewing Machine and/or Serger
- 1/4" Elastic
- Iron

Fabric Requirements:

Size	Dress	Dress Ruffle	Top	Top Ruffle	Sleeves	Sash
18 months	1/2 yard	1/4 yard	1/3 yard	1/4 yard	1/4 yard	1/3 yard
2T	1/2 yard	1/4 yard	3/8 yard	1/4 yard	1/4 yard	1/3 yard
3T	5/8 yard	1/4 yard	3/8 yard	1/4 yard	1/4 yard	1/3 yard
4T	5/8 yard	1/4 yard	1/2 yard	1/4 yard	1/4 yard	1/3 yard
5T	5/8 yard	1/3 yard	1/2 yard	1/4 yard	1/3 yard	1/3 yard
6	5/8 yard	1/3 yard	1/2yard	1/4 yard	1/3 yard	1/3 yard

The fabric requirements are based on the use of 4 different fabrics. If you decide to make the sleeves and dress ruffles out of the same fabrics (as shown in the main picture) you will add those measurements together. The same is true if you decide to make it all out of one fabric.

Size	Average Chest Size	Approx. Finished Length of Dress	Approx. Finished Length of Top
18 months	19"	17"	12"
2T	21"	18"	13"
3T	22"	20"	15"
4T	23"	21"	16"
5T	24"	23"	18"
6	25"	24"	19"

Cutting the Fabric:*Dress Version*

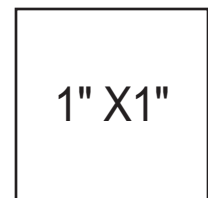
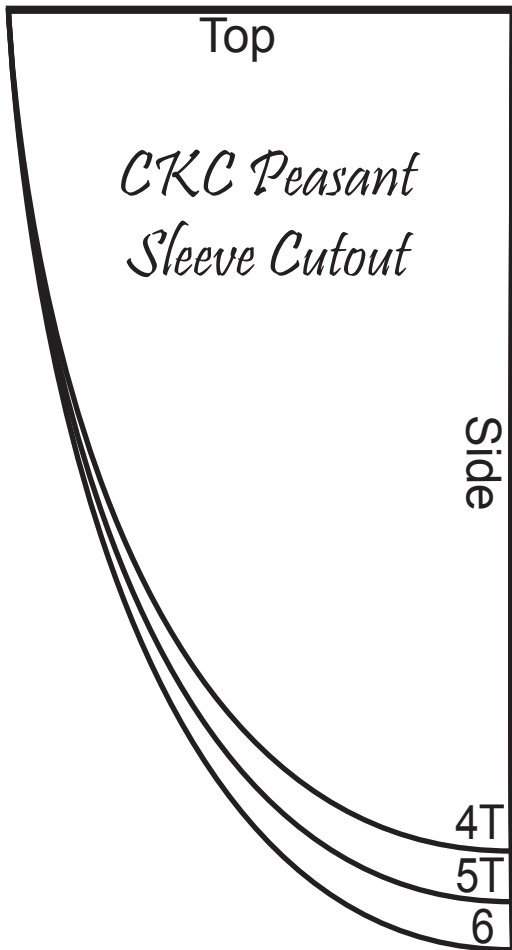
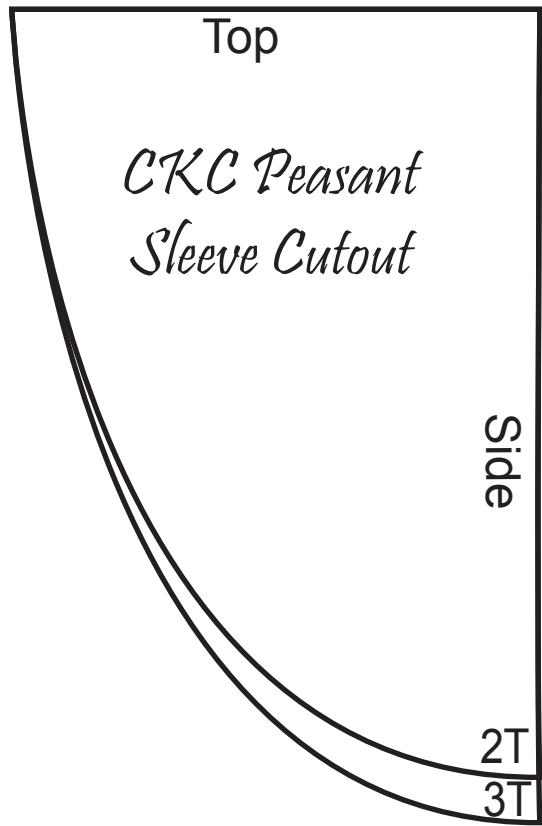
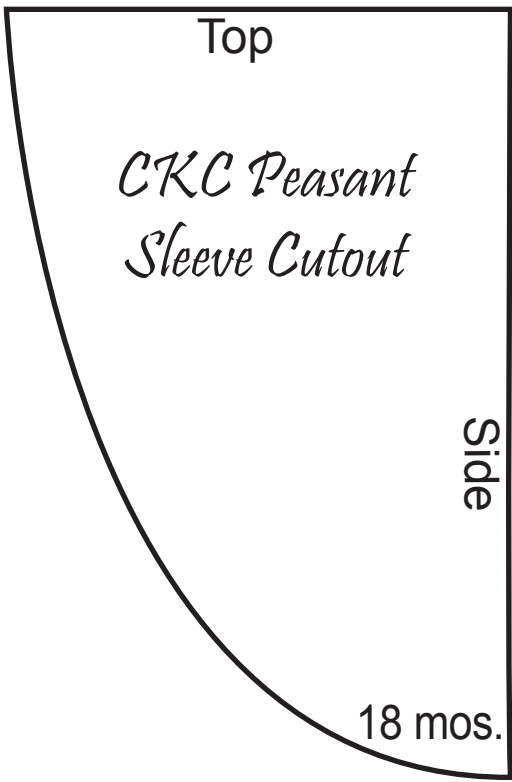
Size	Dress cut 2 Length x Width	Sleeves cut 2 Length x Width	Ruffle cut 2 Length x Width	Neck Elastic Cut 1 Length	Arm Elastic Cut 2 Length
18 months	16" x 15"	7" x 14"	3.5" x 30"	15.5"	6.5"
2T	17" x 15.5"	7.5" x 14.5"	3.5" x 31"	16"	7"
3T	18" x 15.5"	8" x 14.5"	4" x 31"	16.5"	7"
4T	19" x 16"	8.5" x 15"	4" x 32"	17"	7.5"
5T	20" x 16.5"	9" x 15.5"	4.5" x 33"	17.5"	7.5"
6	21" x 17.5"	9.5" x 15.5"	5" x 35"	18"	8"

Top Version

Size	Top cut 2 Length x Width	Sleeves cut 2 Length x Width	Ruffle cut 2 Length x Width	Neck Elastic Cut 1 Length	Arm Elastic Cut 1 Length
18 months	12" x 15"	7" x 14"	2.5" x 30"	15.5"	6.5"
2T	13" x 15.5"	7.5" x 14.5"	2.5" x 31"	16"	7"
3T	14" x 15.5"	8" x 14.5"	3" x 31"	16.5"	7"
4T	15" x 16"	8.5" x 15"	3" x 32"	17"	7.5"
5T	16" x 16.5"	9" x 15.5"	3.5" x 33"	17.5"	7.5"
6	17" x 17.5"	9.5" x 15.5"	4" x 35"	18"	8"

****Note that the seam allowances when sewing will be 3/8" and it is included in the measurements above.**

Sash for sizes 18 mos.-6
Cut 1 of each Length x Width
5.5" x 40"
5.5" x 30"





After cutting out all of the pieces we should have a pile similar to this.

Cutting Out Arm Curves:

When printing out the pattern piece make sure the "Auto Rotate and Center" Box is not ticked and page-scaling is set to "None". This is VERY important.



Step 1: After cutting out the pattern piece in the size we are making we will take our sleeves, stack them on top of one another, and fold them in half width-wise. As pictured to the left, we will place our pattern piece in the corner on the raw edges, and pin in place. Double check now to be sure that the print of the fabric is going the correct way.

Step 2: Cut out the fabric, following the pattern piece's curve. We now have armhole curves.



Step 3: Repeat these same exact steps with the dress bodice.

Construction:

Step 1: We will take one sleeve piece and one body piece and sew them, fabric right sides together, on the armhole curve as shown in red.

Step 2: Now, we take the opposite side of the body piece that we have just sewn and your second sleeve piece, and sew it on at the curve just as we did above. We will now have 1 body piece with a sleeve sewn on at both sides .



Step 3: We will now take the last body piece and the sleeves, sewing them right sides together on the curves repeating the above Steps 1 and 2. We will now have a piece that looks like this.





Step 4: Now match up the sleeves and bodice pieces, right sides together. Pin and then sew down both sides as shown in red.

Step 5: We are going to make the dress ruffle now. Take the two ruffle pieces and sew them right sides together on the shorter sides on the end so you have one continuous loop of fabric. The picture to the right is only showing one of the two ends.



Step 6: We are now going to hem our dress ruffle. Start by folding bottom of ruffle back 1/4" and ironing. Fold back an additional 1/4", iron, and pin. At this point we can now sew 1/8" from the bottom fold around the entire ruffle.



Step 7: We are now going to gather the dress ruffle to sew on the dress. Set the machine on the longest stitch length. Sew at the top of the ruffle 1/4" down making sure not to backstitch at the beginning or end. Some seamstresses prefer to have two rows of stitching in case a thread breaks, however, if you are using high-quality thread as we do, then one row of stitching should be sufficient.

Step 8: Take the dress (not the dress ruffle) and lay it on a flat surface for reference on how wide our dress ruffle needs to be.



Begin gathering the dress ruffle by pulling the 2 top threads and moving the fabric back so it is gathered together (pictured at left).

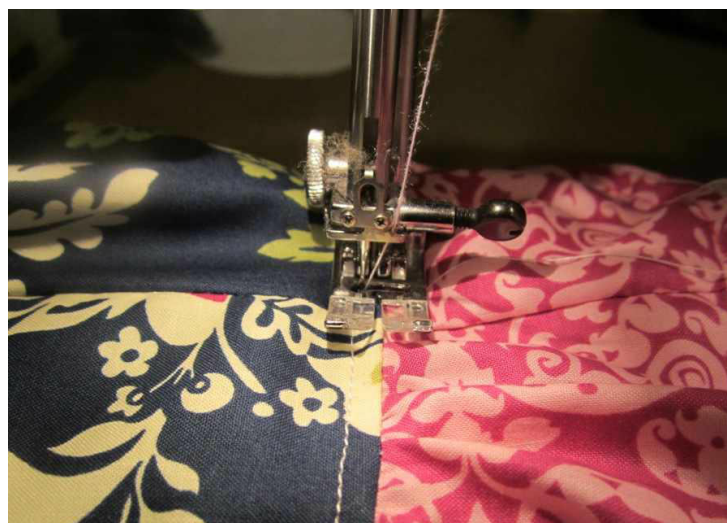
When it looks like it is the right width, we can begin pinning the dress ruffle to the dress by putting the right sides together and adjusting the gathers as we go. At this point, we will know if it is gathered too much or too little and it is easier to adjust correctly. Make sure that the side seams of the ruffle match the side seams of the dress.





Step 9: We can now sew on the dress ruffle. To sew the dress ruffle to the dress be sure to sew below the gathering line otherwise it will be visible when we are done.

Step 10: We can now topstitch our dress ruffle. This step is not necessary but we feel that not only does it really complete a garment and make it look more professional, but it also makes the clothes more durable for children. To topstitch, sew an 1/8" up from where we attached the ruffle being sure to catch the seams.



The topstitching should look like this when done.

Step 11: We can now make our neck casing for the elastic. Starting at the center of our dress neckline, fold and press 1/4" down all the way around the neck. Now we fold over an additional 1/2" down and iron, pinning as we go making sure to match up seams at arms. We are showing below where we are folding down the one side of the neckline and we haven't folded down the other side yet.



Step 12: Now we can sew an 1/8" from the bottom of our fold all the way around the entire neck being sure to leave a one inch opening as shown below.

Step 13: Thread our 1/4" elastic through the neck casing making sure that it doesn't twist while doing so. To make this easier we like to use a safety pin at one end of the elastic to help guide it through the elastic casing! Be sure to remove the safety pin when finished! When we reach the end, sew the two elastic ends together, again making sure that it is not twisted. Once sewn together, pull the neck and spread the fabric around so it is evenly distributed. We can now sew the one inch opening close. Also, if we have labels, now would be the time to sew them in.



Step 14: We can now make our elastic casing for the sleeves just as we did in Step 11 with the neck. Starting at the seam of our dress sleeve, fold and press 1/4" down all the way around the sleeve. Now we fold over an additional 1/2" down and iron, pinning as we go making sure to match up sleeve seams.



Step 15: Now we can sew 1/8" from the bottom of our fold all the way around the entire arm being sure to leave a one inch opening as shown below.

Step 16: Thread our 1/4" elastic through the sleeve casing making sure that it doesn't twist while doing so. When we reach the end, sew the two elastic ends together, again making sure that it is not twisted. Once sewn together, pull the sleeve and spread the fabric around so it is evenly distributed. We can now sew the one inch opening close. Repeat Steps 14-16 for the other sleeve.

Optional Sash:



Step 17: Take the two sash pieces and sew them right sides together.

Fold in half lengthwise and sew down the three open sides making sure to leave a 1.5" opening on the long side.





When done, using a dowel or chopstick turn fabric right side out using the opening we left. Iron the sash so it is nice and crisp making sure to fold under and iron the spot we left open so that it matches the rest of the sash.

Step 18: We may now topstitch our sash. Sew 1/8" from the ends around the entire sash. Although, we said its not necessary to topstitch the garment it is necessary topstitch the sash because if you do not every time the sash is washed it will need to be ironed.



You are now done and you completed it in just 18 steps!!! Was that easy or what?!? Here are some more pictures of this dress completed using various fabric combinations for inspiration.



Thank you for downloading a Create Kids Couture original pattern exclusive to Fabric.com! If you have any questions or concerns, do not hesitate to e-mail us at CreateKidsCouture@gmail.com

We are constantly working on new patterns so if you want up-to-date information on what patterns we have in production now please become our fan on Facebook: www.Facebook.com/CreateKidsCouture

We also have free tutorials available on our blog: www.CreateKidsCouture.blogspot.com

Lastly, be sure to check our website to download our patterns instantly to your computer: www.CreateKidsCouture.com

Cover photo courtesy of Rylie Jolie Photography, Necklace available from Wild Pixie Couture, Hair Accessory available from Positively Whimsy Hair Accessories

© 2012 Create Kids Couture

All rights reserved. No part of this pattern may be reproduced or transmitted in any form or by any means, electronic, mechanical, photocopying, or otherwise, without prior written permission of Create Kids Couture. All patterns are original designs by Create Kids Couture. All patterns are for personal use only and limited to small scale home businesses. If you do create items to sell from this pattern, we ask that you give us credit wherever photos of said outfit are posted.