

27-28-MC-RG301 Natural Basket

© Pierrot Yarns (Gosyo Co., Ltd.). Translation by Linda Lanz.



Materials

- Pierrot Yarns MC-RG301 Linen Estelle [50% linen; 50% polyester; 126 yds/115m per 3.53 oz./100g cone]; 2 cones [110g] – *discontinued; please choose appropriate substitute*
- 4.0mm (US G) crochet hook or size necessary to achieve gauge
- 6m/6.56yds [teknorote](#) (0.7mm thickness) or similar stiff cord, such as nylon monofilament

Gauge

Gauge measured in a swatch 10cm/4" square.

- single crochet (US): 20 sts and 20 rows

Finished measurements

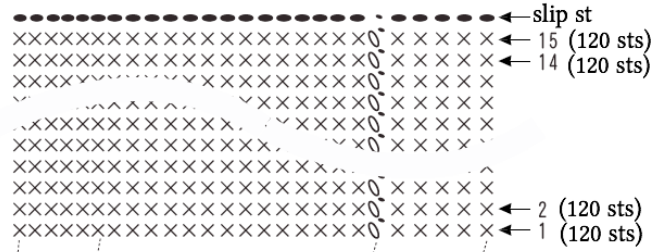
- diameter 20cm/7.87"
- height 10cm/3.94"

Crochet Tips

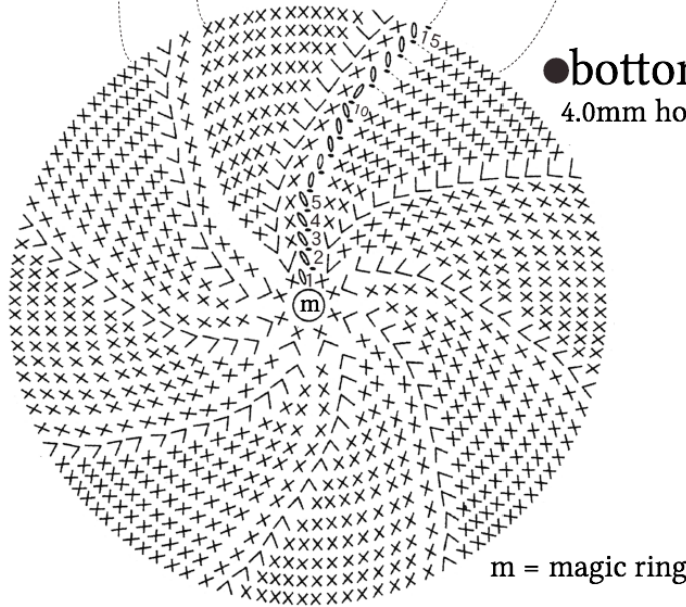
※ Worked with one strand of yarn.

- **Bottom:** Create magic ring; ch1 as turning post for first round, work 8 sc into ring and slip st into first stitch to join. Work through round 15 according to chart, increasing to 120 stitches.
- **Sides:** Using teknorote as stiffener, crochet teknorote into stitches (that is, work stitches around teknorote). Work through round 15 in sc. Work 1 round of slip st.
- Attach desired type of handle.

●side 4.0mm hook



●bottom 4.0mm hook



●finished item

