

LOVE IN THE AFTERNOON

For this dress, select a cotton with stripes that run along the grain and are varied in width, if possible. The trim on the bust is cut along the grain from one of the stripes rather than on the bias. Choose a print with a stripe wide enough to yield four pieces cut on the straight grain of the fabric, or find another fabric to use that either matches or contrasts with the stripes. This dress is lined with the same fabric.

SKILL LEVEL INTERMEDIATE

MATERIALS

2 yd (1.8m) striped cotton

1/2 yd (45.5cm) fusible interfacing

Thread to contrast trim on bust and to match self fabric

15" (38cm) zipper

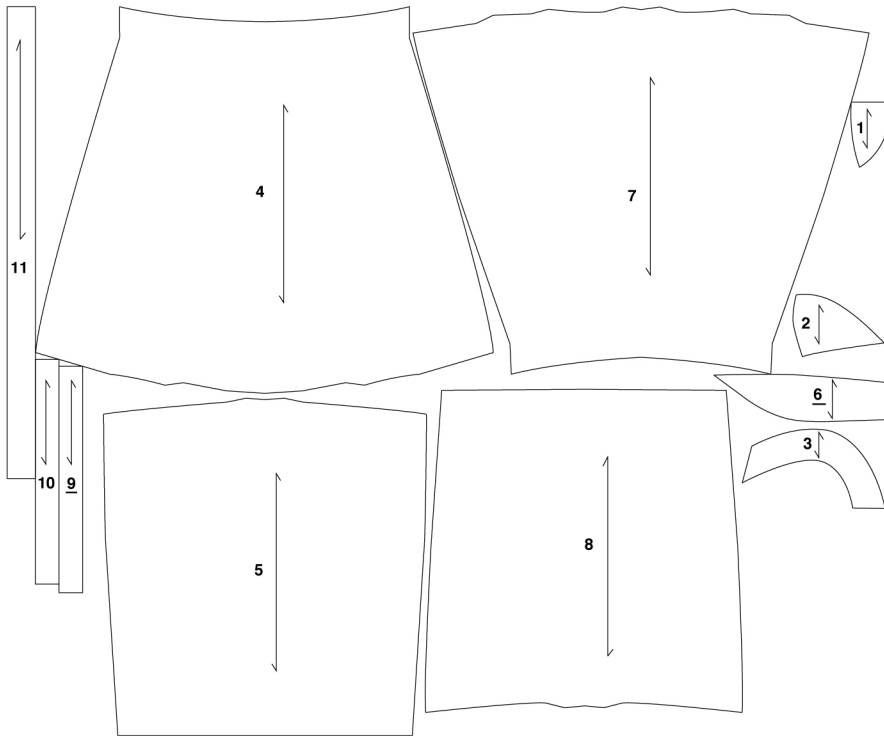
1 hook and eye

seam allowances

1/2" (13mm) for the side seams;

3/8" (9.5mm) for all others





SELF	CUT
1. Center Bust	4
2. Side Bust	4
3. Bust Band	4
4. Front Skirt	1
5. Front Skirt Lining	1
6. Back Body	4
7. Back Skirt	1
8. Back Skirt Lining	1
9. Right Center Shoulder Strap	1
10. Right Side/Left Shoulder Strap	2
11. Origami Strap	1

FUSIBLE	
1. Center Bust	4
2. Side Bust	4
3. Bust Band	4
6. Back Body	4

1 Select the pattern size according to your bust measurement. Lay out and cut the pattern pieces, fitting them on the fabric however works for you, and cut. Don't forget to watch the grain lines.

2 Press fusible interfacing to the bust pieces (1, 2, 3) and the back body (6).

3 Sew the 3 straps (9, 10) into tubes using the stitch and turn method (page TK). Note: 2 straps go on the right side, and 1 strap, covered with pleated trim (11), goes on the left side. Finish both edges of the strap trim (11) with rolled hems. Pin the pleats in place and topstitch the trim to the left strap down the center. **(A)**

4 Embellish the bust band (3) with 4 evenly spaced rows of very narrow zigzag stitches about 1/4" (6mm) apart, parallel to the curved edges of the piece.

5 Sew the center bust (1) and the side bust (2) together, then clip the curved seam allowance. Topstitch very close to the seam line on both sides of the seam. Sew the bust cup (1, 2) to the bust band (3). Clip the curved seam allowance. Understitch.

6 Repeat step 5 with the bust lining pieces (1, 2, 3).

7 Baste the straps in place on the top edge of the bust band where indicated. Be sure that the right (public) side of the left strap trim is facing the right side of the bust cup, and the strap is pointing down with its end flush with the edge of the bust. With right sides together, stitch the bust and bust lining pieces together. Clip the curves and press to the right side.

8 Baste the pleats in place on the skirt front (4). Sew the skirt front (4) to the bust cup for about 2" (5cm) on the left side.

9 Sew the back skirt lining (8) to the back body (6). You will have two separate back body pieces (6): one left and one right. Leave openings for the straps where indicated. Clip the curves. Turn and press flat. Insert both straps between the back body lining and the back body where indicated (making sure the right (public) side of the trim on the left strap faces out on the outer body (public) side). Pin or baste. Topstitch close to the top edge on both pieces.



A



B

10 Baste the back body pieces together, overlapping as indicated. (B)

11 Baste the pleats in place on the skirt back (7). Sew the skirt back to the back body for about 2" (5cm) on the left side.

12 Baste the pleats on the front (5) and back (8) skirt linings. Sew the top of the front lining to front skirt lining for about 2" (5cm) on the left side. Repeat with the back lining and back skirt lining pieces. Remove all basting stitches.

Finishing Touches

13 Using your favorite method or following the directions on the package, put the zipper in the left side seam, matching the stripes on the front and back. Be careful not to get the lining caught in the seam. Finish sewing the left seam, then sew the right side seam together, again matching the stripes. Sew the right lining side seam together, matching the stripes. Sew the left seam of the lining together, leaving an opening for the zipper.

14 With right sides of the skirt back and front together, sew the body, body lining, skirt, and skirt lining together, beginning where the seams ended 2" (5cm) from the zipper.

15 Finish the lining with a very narrow double-fold hem. If at all possible, hem the skirt in such a way that the hem stitching runs along the middle of a horizontal stripe.

16 Slip stitch the lining to the zipper opening.

17 Sew the hook and eye just above the top of the zipper.

18 With thread, crochet a chain about 2" (5cm) long. Attach one end at the bottom hem of the lining on the right-hand seam line. Attach the other end to the seam allowance of the skirt. This will help to keep the lining from sliding around.