



AROHAknits

knitwear designs

Beta Pattern

Thank you for downloading the beta version of the pattern! The policies, which you can find on the last page, still apply to beta versions. If you wish to use this pattern for a class or a kit, please wait until the official release. Pattern support still applies to betas, so email me if you run into any problems!

By downloading the beta pattern, you have agreed to be subscribed to Frenchie's Knitsagram, a weekly newsletter where I share knitting tips and tutorials, notifications of new Aroha Knits patterns with special subscriber discounts, and other knitting-related news. You can unsubscribe at anytime.

If you wish to receive the final version, which will be tech edited, corrected for errors, and with access to high-res photos and pattern specific tutorials, please purchase it when it goes live on Ravelry.

Happy knitting!

-Frenchie



Designed by Francoise Danoy. Copyright 2016. All Rights Reserved.
For pattern support, email fdanoy@arohaknits.com

About

Needle: US size 4 (3.5mm) 32" (80cm) circular needle. Long circular needle is recommended in order to accommodate the large number of stitches

Yarns Used: Papiput Yarn Silky Merino Lace (Lace / 2 ply ; 50% Silk, 50% Merino ; 766 yards (700 meters) / 100 grams).

Yardage: 730 - 766 yards / 670 - 700 meters

Gauge: 20 sts and 36 rows in St. st. Gauge is not crucial to this project, but varying gauges will result in different yardages and final measurements.

Other Notions: Stitch markers

Final Measurements: Depth 24" (60cm) / Wingspan 68" (172cm)

Stitch Abbreviations

K - knit

P - purl

K2tog - knit two together

Ssk - slip slip knit

P2tog - purl two together

Yo - yarn over

K3tog - knit three together

P3tog - purl three together

Rep - repeat

M - marker

Pm - place marker

Sm - slip marker

Sk2po - slip 1 stitch, knit 2 stitches together, pass slipped stitch over

St. st - Stockinette Stitch

Pattern Stitches

STOCKINETTE STITCH

Row 1 (RS): K all sts.

Row 2 (WS): P all sts.

PLANTING OF THE SEEDS (8 STS +7)

Row 1 (RS): K all sts.

Row 2 (WS): P all sts.

Row 3: K3, *k1, k2tog, yo, k1, yo, ssk, k2 *
rep until 4 sts from m, k4.

Row 4: P4, *p1, p2tog tbl, yo, p3, yo, p2tog
* rep until 3 sts from m, p3.

Row 5: K all sts.

Row 6: P all sts.

MESH SEEDS (4 STS + 5)

Row 1 (RS): *(P1, k3) x 2 ; rep until last st*,
p1.

Row 2 (WS): (P1, yo, p1) in 1 stitch, *(p3tog,
(p1, yo, p1) in 1 stitch) x 2 ; rep until m*.

Row 3: *(K3, p1) x 2 ; rep until last 3 sts*, k3.

Row 4: P3tog, *((p1, yo, p1) in 1 stitch, p3tog)
x 2 ; rep until m*.

LITTLE LEAVES (6 STS + 4)

Row 1 (RS): K1, k2tog, *yo, k1, yo, ssk, k1,
k2tog ; rep until last st*, yo, k1.

Row 3: K1, k2tog, *yo, k1, yo, ssk, k1, k2tog ;
rep until last st*, yo, k1.

Row 5: K2tog, yo, *k3, yo, sk2po, yo ; rep
until last 2 sts *, k2.

Row 7: K1, yo, *ssk, k1, k2tog, yo, k1, yo ;
rep until last 3 sts*, ssk, k1.

Row 9: K1, yo, *ssk, k1, k2tog, yo, k1, yo ;
rep until last 3 sts*, ssk, k1.

Row 11: K2, *yo, sk2po, yo, k3 ; rep until last
2 sts*, yo, ssk.

LACE LEAF CLUSTERS (16 STS + 9)

Row 1 (RS): K3, yo, *(sk2po, yo, k5, yo) x 2 ;
rep until last 6 sts*, sk2po, yo, k3. (25 sts)

Row 3: K1, k2tog, yo, k1, *k2, yo, ssk, k1,
k2tog, yo, k3, yo, ssk, k1, k2tog, yo, k1 ; rep
until last 5 sts*, k2, yo, ssk, k1.

Row 5: K2tog, yo, k2, yo, *ssk, k1, yo, sk2po,
yo, k1, k2tog, yo, k2, yo, sk2po, yo, k2, yo ;
rep until last 5 sts*, ssk, k1, yo, ssk.

Row 7: K2, yo, ssk, k1, yo, *ssk, k3, k2tog, yo,
k1, k2tog, yo, k3, yo, ssk, k1, yo ; rep until last
4 sts*, ssk, k2.

Row 9: K3, yo, ssk, k1, yo, *ssk, (k1, k2tog,
yo) x 2, k5, yo, ssk, k1, yo ; rep until last 3
sts*, ssk, k1.

Row 11: (K1, yo, ssk) x 2, k1, *yo, sk2po, (yo,
k1, k2tog) x 2, yo, (k1, yo, ssk) x 2, k1 ; rep
until last 2 sts*, yo, ssk.

Row 13: K2, yo, ssk, k1, k2tog, *(yo, k3, yo,
ssk, k1, k2tog) x 2 ; rep until last 2 sts*, yo, k2.

Row 15: K3, yo, sk2po, *(yo, k5, yo, sk2po) x
2 ; rep until last 3 sts*, yo, k3.

Row 17: K1, k2tog, yo, k2, *k1, yo, ssk, k1,
k2tog, yo, k3, yo, ssk, k1, k2tog, yo, k2 ; rep
until last 4 sts*, k1, yo, ssk, k1.

Row 19: K2tog, yo, k1, k2tog, *yo, k2, yo,
sk2po, yo, k2, yo, ssk, k1, yo, sk2po, yo, k1,
k2tog ; rep until last 4 sts*, yo, k2, yo, ssk.

Row 21: K2, k2tog, *yo, k1, k2tog, yo, k3,
yo, ssk, k1, yo, ssk, k3, k2tog ; rep until last 5
sts*, yo, k1, k2tog, yo, k2.

Row 23: K1, k2tog, *yo, k1, k2tog, yo, k5,
(yo, ssk, k) x 2, k2tog ; rep until last 6 sts*, yo,
k1, k2tog, yo, k3.

Row 25: K2tog, yo, *(k1, k2tog, yo) x 2, (k1,
yo, ssk) x 2, k1, yo, sk2po, yo ; rep until last 7
sts*, (k1, k2tog, yo) x 2, k1.

Row 27: K2, yo, *(ssk, k1, k2tog, yo, k3, yo) x
2 ; rep until last 7 sts*, ssk, k1, k2tog, yo, k2.

Pattern Notes

The stitch counts are only listed for the stitches in-between the garter stitch edges (or in-between the two main stitch markers). The stitch count will be 6 sts less than the TOTAL amount of stitches on the needle. Pattern stitches (both written and charted), as well as the section instructions do not include the garter stitch border, however work the body of the shawl as set below:

Row 1 (RS): K3, sm1, work Section Pattern until m, sm2, k3.

Row 2 (WS): K3, sm1, work Section Pattern until m, sm2, k3.

Pattern

Cast on 3 sts. Knit 8 rows. Then turn work 90 degrees and pick up and knit 4 sts. Turn work 90 degrees and pick up and knit 3 sts (10 sts). Work K3, pm1, p4, pm2, k3.

SECTION 1

Row 1 (RS): (Yo, k1) x 4, yo (9 sts).

Row 2 (WS): P all sts.

Rows [3-4]: Work Stockinette Stitch rows [1-2] once.

SECTION 2

Row 1 (RS): (Yo, k1) x 9, yo (19 sts).

Row 2 (WS): P all sts.

Row [3 - 8]: Work Stockinette Stitch rows [1-2] three times.

SECTION 3

Row 1 (RS): (Yo, k1) x 19, yo (39 sts).

Row 2 (WS): P all sts.

Rows [3 - 14]: Work Planting of the Seeds rows [1-4].

SECTION 4

Row 1 (RS): (Yo, k1) x 38, k1 (77 sts).

Row 2 (WS): P all sts.

Rows [3 - 4]: Work Stockinette Stitch rows [1-2] once.

Row [5 - 24]: Work Mesh Seeds rows [1-4] five times (18 reps per row).

Row [25-26]: Work Stockinette Stitch rows [1-2] once.

SECTION 5

Row 1 (RS): (K1, yo) until end (154 sts).

Row 2 (WS): P all sts.

Rows [3-50]: Work Little Leaves rows [1-12] four times (155)

SECTION 6

Row 1 (RS): (Yo, k1) until end, yo (309 sts).

Row 2 (WS): (P1, pfb) x 2, p until last 5 sts, (p1, pfb) x 2, p1 (313 sts).

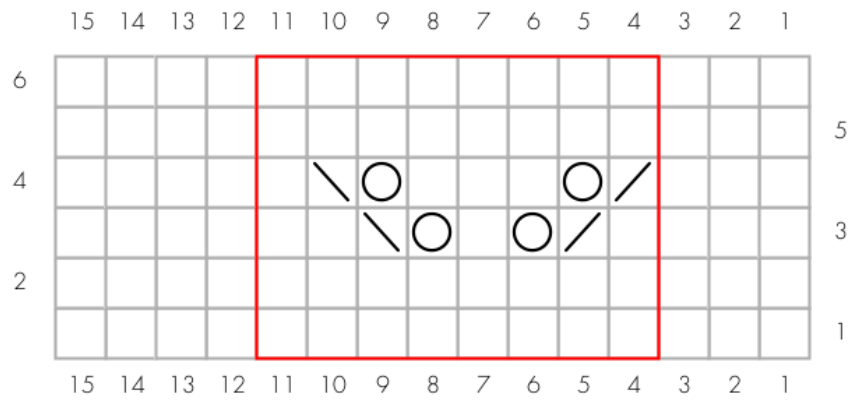
Row [3 - 94]: Work Lace Leaf Clusters rows [1-28] three times.

Finishing: Bind-off shawl loosely. Block shawl to measurements. To effectively block the shawl, pin the top edge in a straight line first, then pin out the edges, starting right at the center bottom. Pin the lace out aggressively. Weave in ends and enjoy your new shawl!

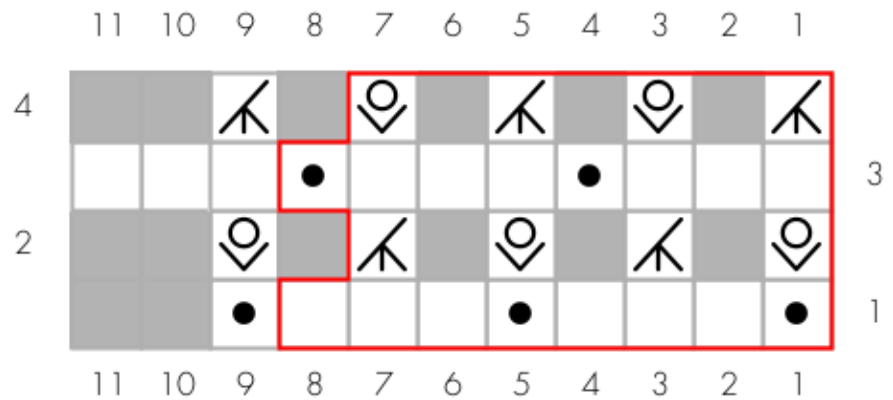
Pattern Charts

Use stitch markers to mark off repeats.

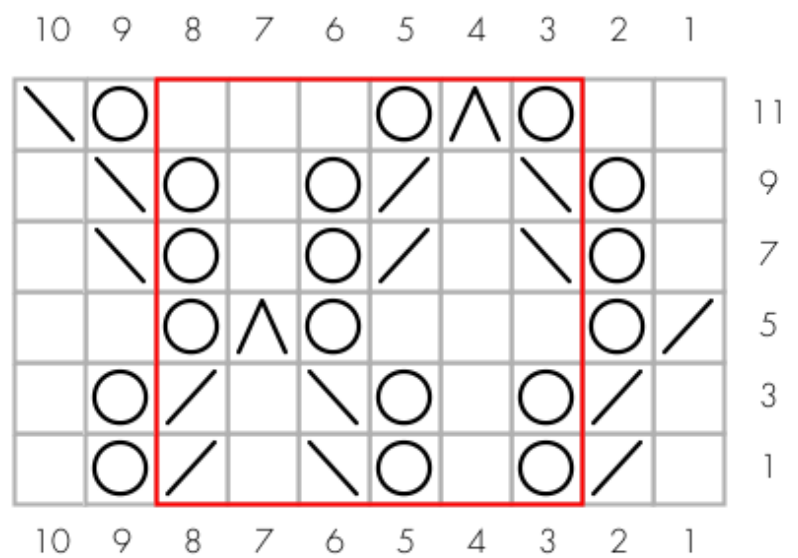
PLANTING OF THE SEEDS (8 STS + 7)



MESH SEEDS (4 STS + 5)



LITTLE LEAVES (6 STS + 4)



□ RS: knit
WS: purl

● RS: purl
WS: knit

○ yo

/ RS: k2tog
WS: p2tog

\ RS: ssk
WS: p2tog tbl

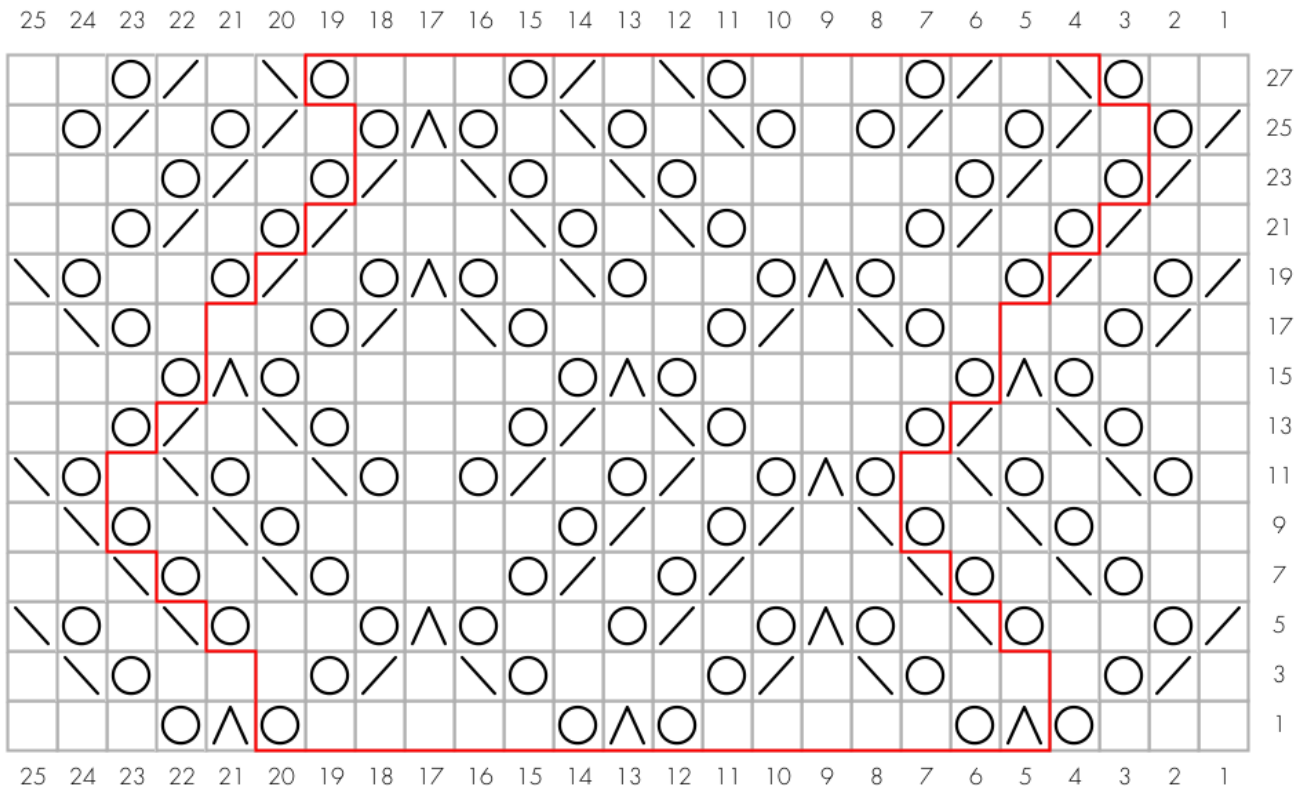
⊙ RS: (k1, yo, k1) in 1 stitch
WS: (p1, yo, p1) in 1 stitch

⋈ RS: k3tog
WS: p3tog

^ RS: Sk2po

□ Repeat

LACE LEAF CLUSTERS (16 STS + 9)



Chrysanthemum Shawl

Policies

Thank you for purchasing this pattern! Your support of independent designers means a lot to me!

If you have any questions about any of these policy points, don't hesitate to contact me. I enjoy receiving emails from knitters who express interest in using my patterns one way or another.

PATTERNS

Do not distribute, copy or resell the pattern.

If you wish to teach a class using an Aroha Knits pattern, please purchase a copy per student.

If you wish to sell the pattern as a yarn kit, please contact me.

FINISHED OBJECTS

Once you have purchased the pattern, legally, you are allowed to do whatever you like with the finished object, despite it being copyrighted to me, Francoise Danoy and Aroha Knits. Thus, you do not need my permission to do the following:

- Donate the FOs to charity, fundraiser or donation
- Knitting as many as you want for personal use (this includes giving to friends and family)
- Selling limited amounts of FOs to close friends and family

If you wish to sell your FOs on your Etsy site, online store or on-site store, I have no (legal) power to prevent you from doing so. However, please consider joining the Aroha Knits partner program by purchasing a cottage license. By becoming a partner, you will be linked to and featured on the Aroha Knits blog and periodically promoted on different social media. Learn more about the partner program [here](#).

About the Designer



Francoise Danoy is a Maori/Pakeha American-Australian gal living in a small village in Japan with her husband and Beemo the cat. She taught herself how to knit as a New Year's Resolution in January 2014 and hasn't stopped since. One of her goals as a designer is combining modern knitting with the Maori culture to create captivating pieces with a rich sense of heritage that all knitters can appreciate. Her most popular patterns include the Caprius Shawl, Winding Roads Beanie and Iraira Shawl. Her work can be found at www.arohaknits.com or on Ravelry at arohaknits.