

The Perennial Dress



A free pattern by
sewpony

www.sewpony.blogspot.com

The Perennial Dress

www.sewpony.blogspot.com

This PDF contains sizing chart, fabric requirements, elastic placement chart and diagram and all required pattern pieces to make *The Perennial Dress*. Print out all pattern pieces and tape together as shown on the page layout chart.

For a step by step visual tutorial, please visit my blog.

This pattern was drafted by me using Metric Cutting for Children's Wear and Babywear, by Winifred Aldrich (Oxford, 1985) as a guide. This design is my own and is meant for personal use only. Please do not reproduce this pattern.

Thank you! And I hope you like the pattern. Suzanne Seniore

All measurements for this pattern are in centimetres. To convert to inches or find a size suitable for a child of a certain age, use the chart below.

Sizing chart

Height in cm	74	80	86	92	98	104	110	116
Height in inches	29 1/8	31 1/2	33 7/8	36 1/4	38 1/2	41 1/2	44	46 1/4
Approximate age	6 mo	12 mo	18 mo	2 y	3 y	4y	5y	6y
Overall dress length	42cm 16 1/2"	46cm 18 "	50cm 19 3/4 "	54cm 21 1/4"	58cm 22 3/4"	62cm 24 1/2"	68cm 26 3/4"	72cm 28 1/4"

Aldrich, Winifred; Oxford; 1985

Please note: Ages are approximate. For best fit, use the height guides.

Fabric requirements

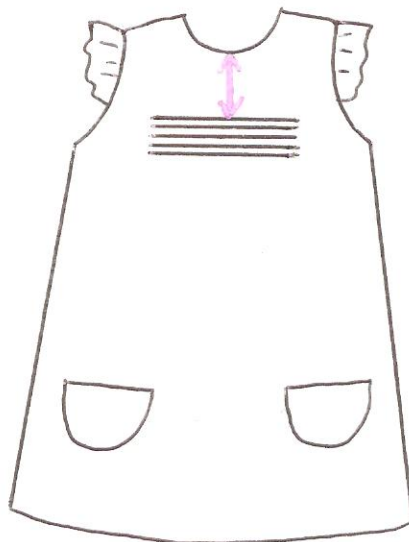
	Pattern size							
Fabric width	74	80	86	92	98	104	110	116
110cm/ 45"	100 40	110 44	120 48	130 52	140 56	150 60	160 64	170 68
150cm/ 60"	50 20	55 22	60 24	65 26	70 28	75 30	80 32	85 34
Contrast fabric – for sleeves and pockets	30cm/12 inches							
Notions	<ul style="list-style-type: none"> • One x 20-30mm diameter button and 8-10cm elastic/thin cord for button loop • Shirring elastic <i>or</i> 3-5mm elastic (depending on weight of fabric) • 30cm of 6mm bias binding (if not making own). NB: 6mm is the width of finished binding (ie. Folded) • One metre of ric rac or trim (optional) 							

Please note: Fabric requirements are based on using fabric with a nap (obvious grain) or one directional print. If you are using a multi-directional print or fabric without nap, you may need less fabric.

Elastic/Shirring placement

As stated in the sewpony tutorial for The Perennial Dress, the type of elastic best suited to your dress depends on the weight of fabric you are using. For light cotton fabrics, shirring elastic threaded on the bobbin and regular thread on the top will produce a good result. However, shirring elastic may not be strong enough to give a good effect on heavier fabrics. It is advisable to test your fabric with a scrap with the shirring method first. Do a couple of short rows and see if it gathers in nicely. If it doesn't use the thicker (3-5 mm) elastic method – see tutorial.

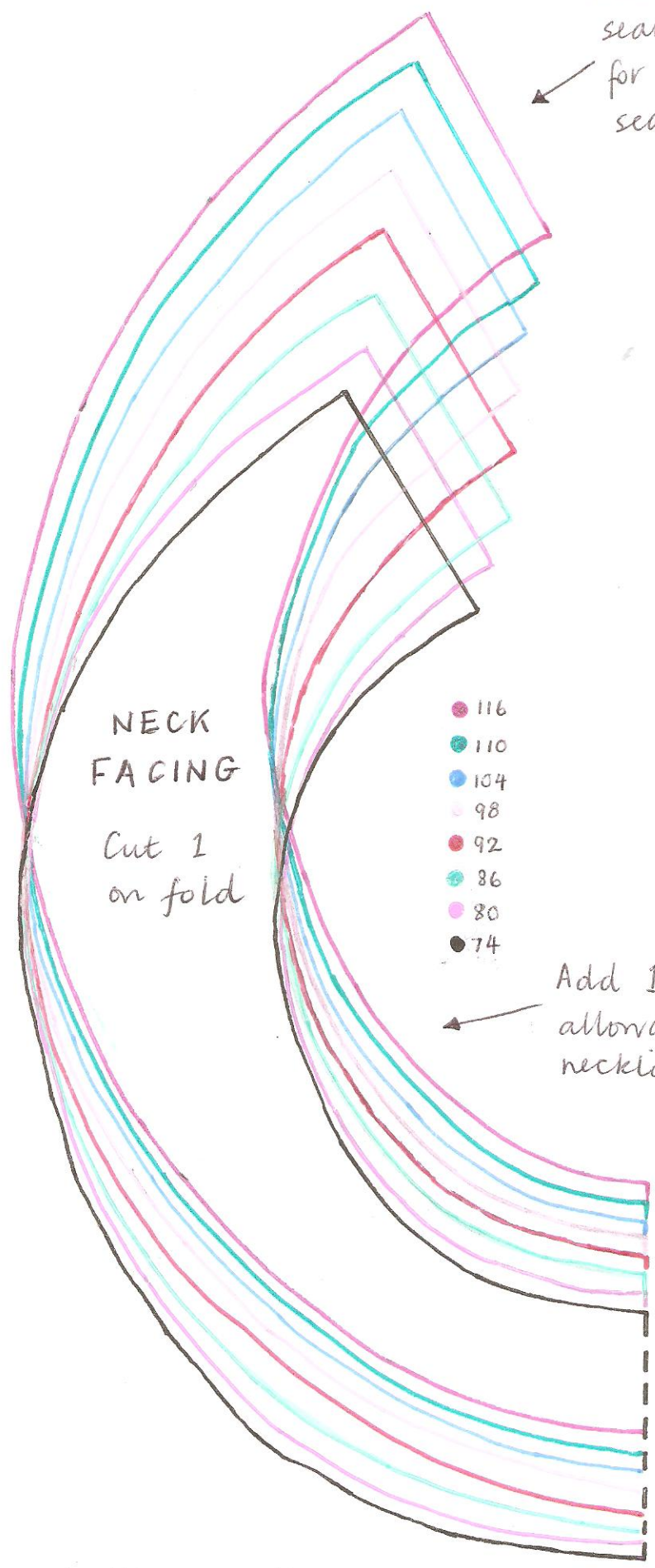
Here is the recommended placement for the shirring/elastic on your dress. It is advisable to use this chart because if you place the rows to close to the neckline, the neckline will not sit flat.



	74	80	86	92	98	104	110	116
Distance from centre neckline to top row of shirring/elastic	8cm/ <i>3 1/8 inch</i>		8.5cm/ <i>3 3/8 inch</i>			9cm/ <i>3 1/2 inch</i>		
Length of rows	14cm <i>5 1/2 inch</i>	15cm <i>6 inch</i>	16cm <i>6 1/2 inch</i>	17cm <i>7 inch</i>	18cm <i>7 1/2 inch</i>	19cm <i>8 inch</i>	22cm <i>8 1/2 inch</i>	21cm <i>9 inch</i>

READ SEAM ALLOWANCES CAREFULLY

Add 1.5 cm seam allowance for centre back seam.



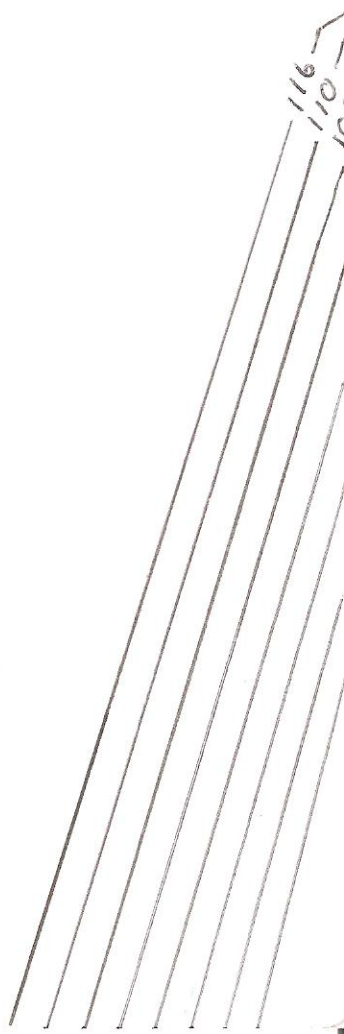
NECK FACING

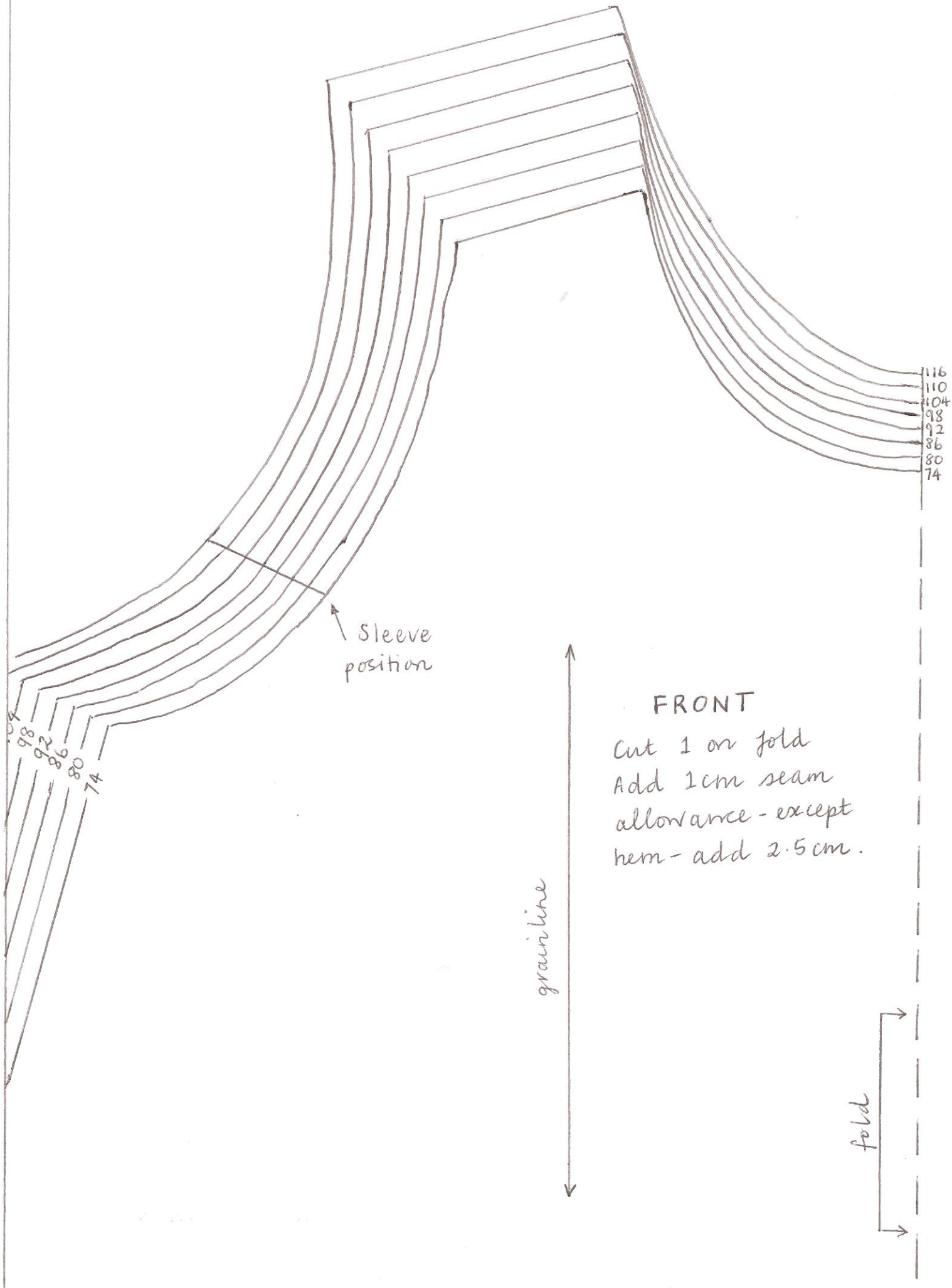
Cut 1 on fold

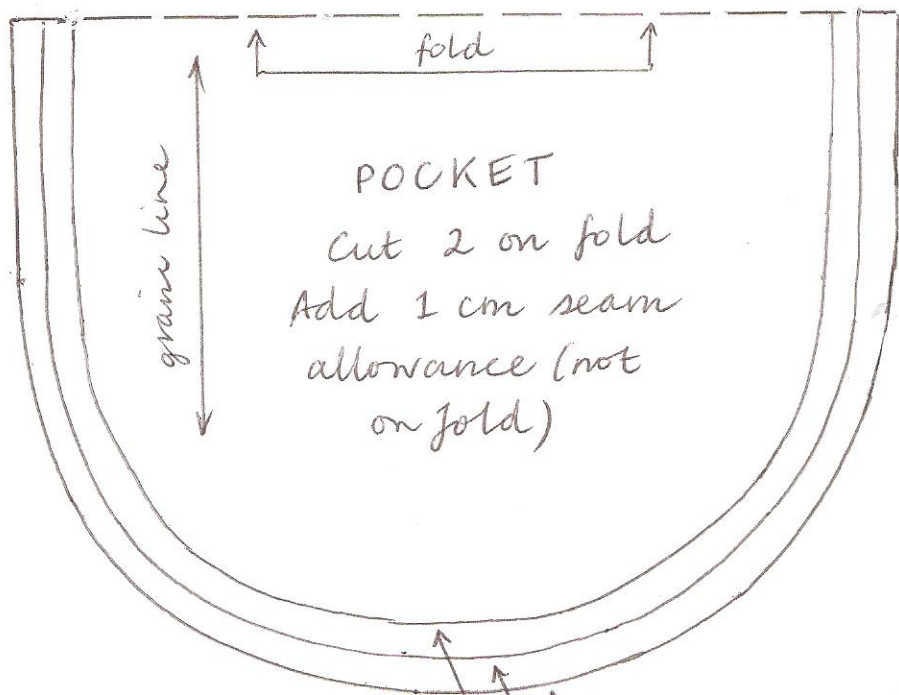
- 116
- 110
- 104
- 98
- 92
- 86
- 80
- 74

Add 1 cm seam allowance for neckline

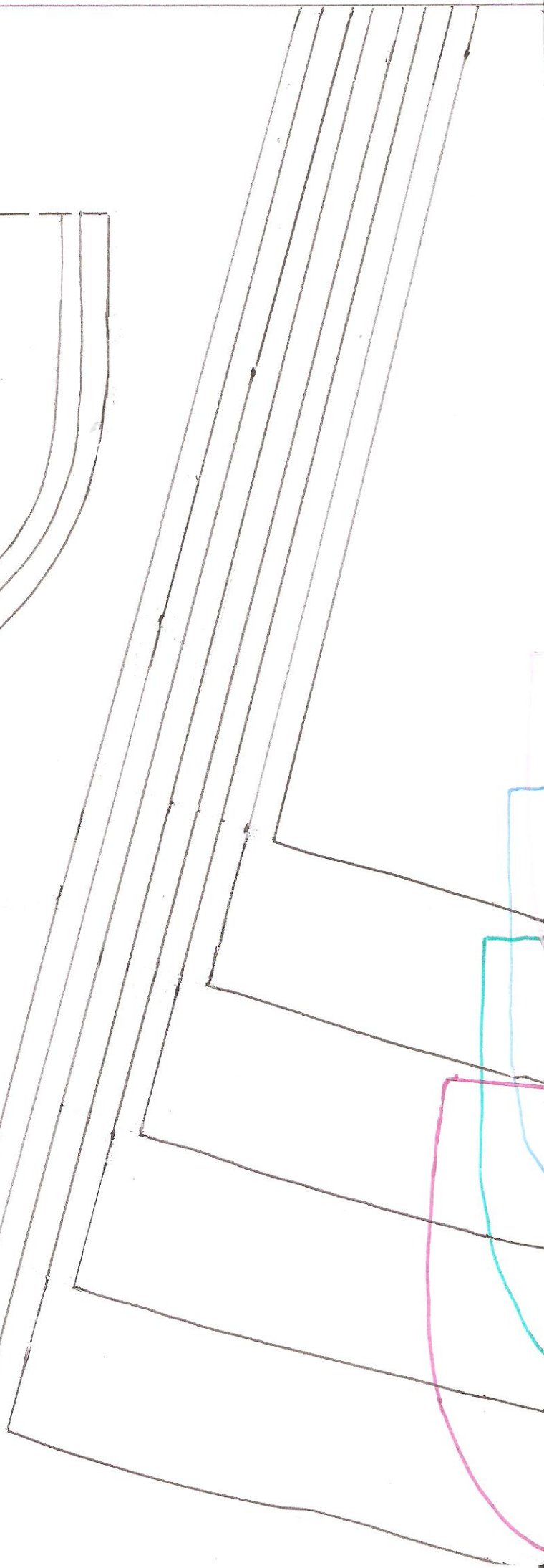
CENTRE FOLD

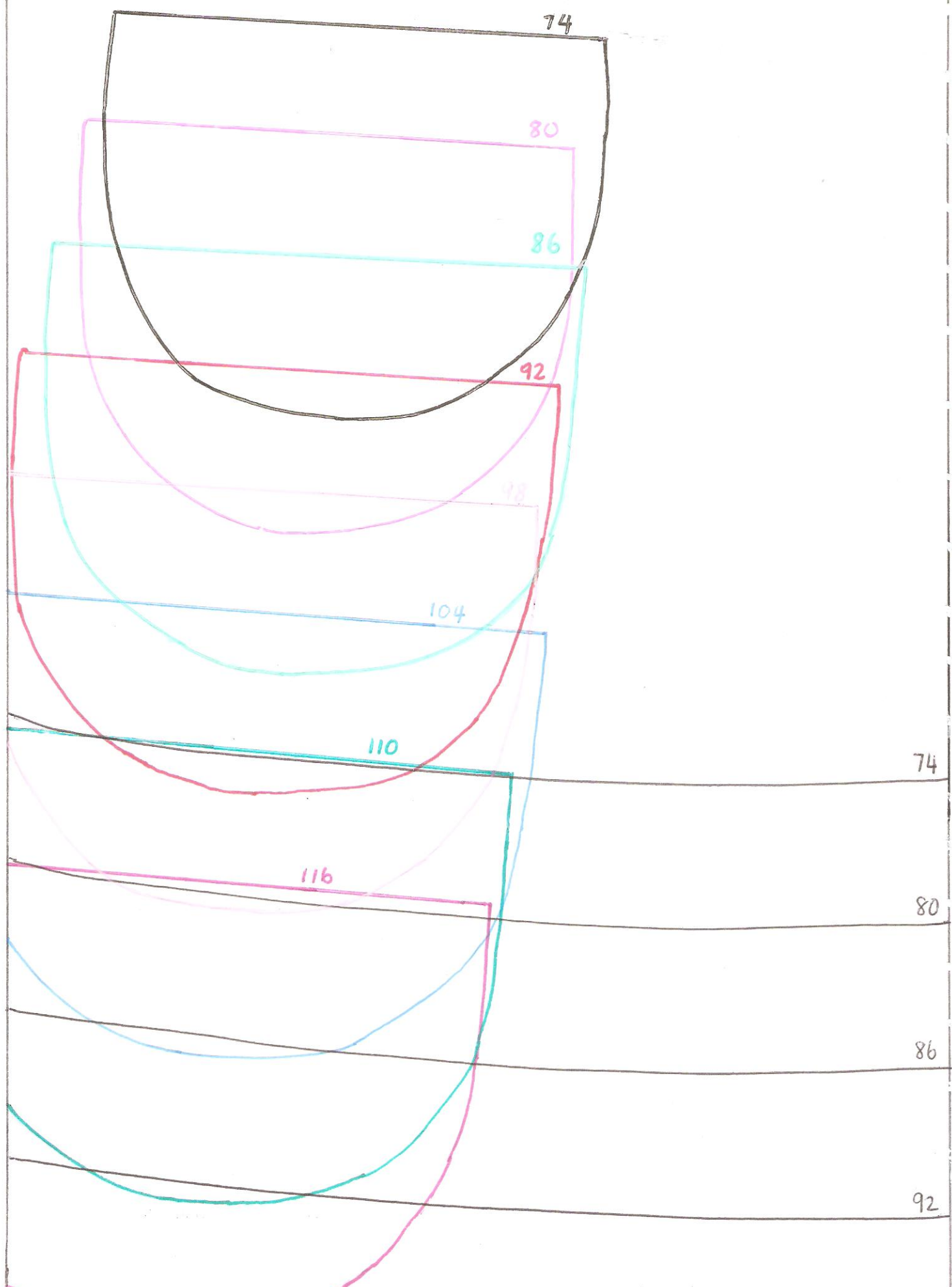


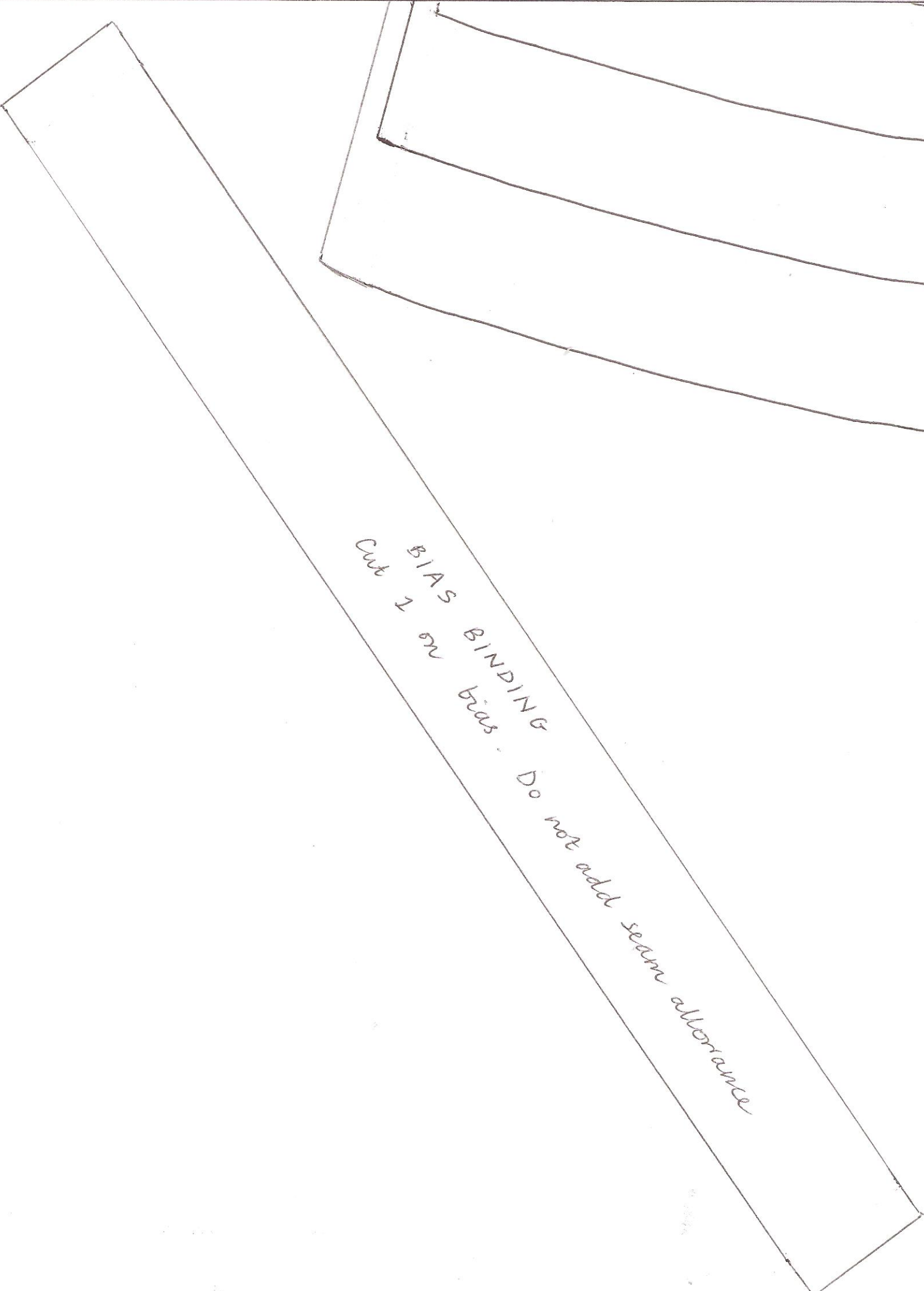




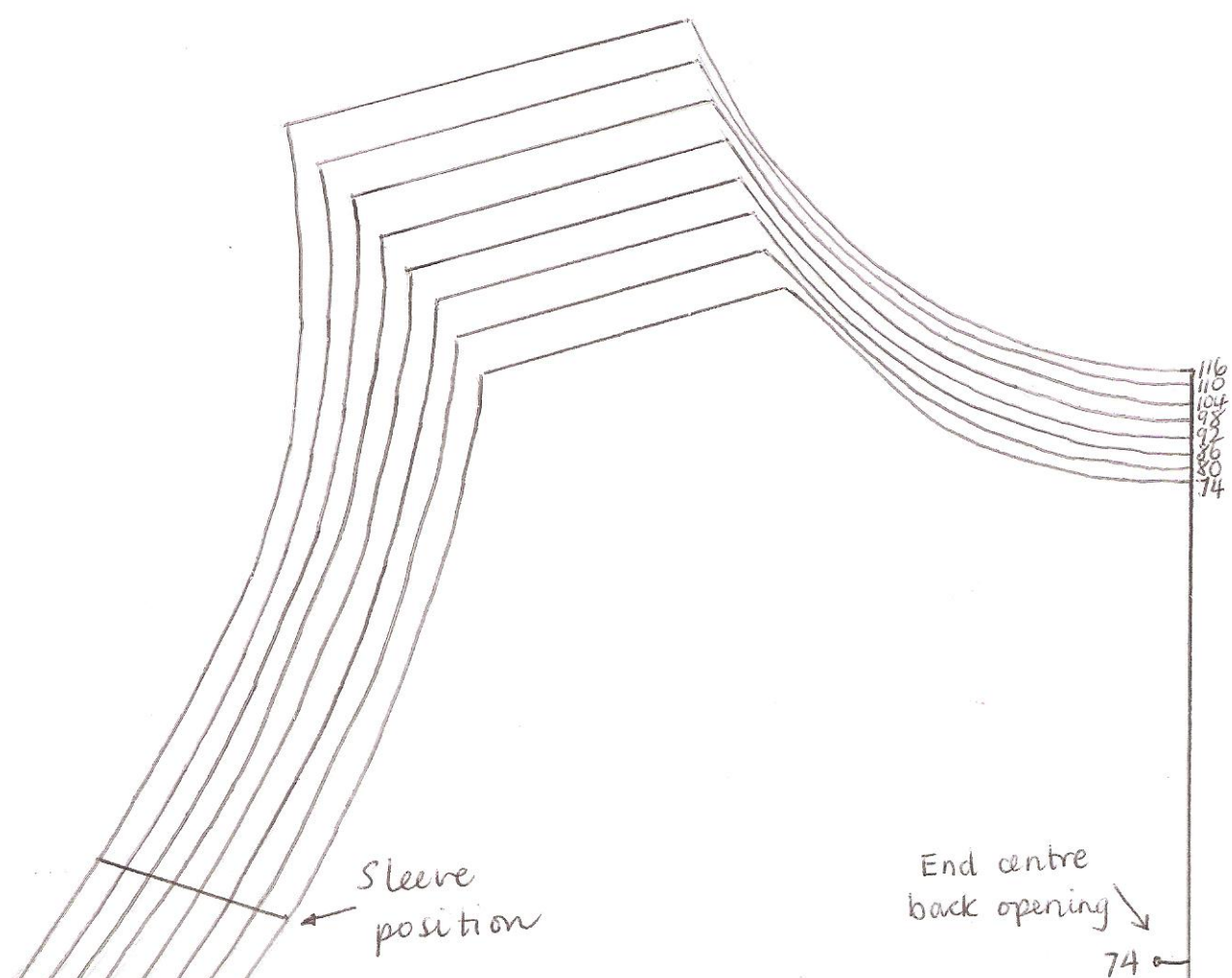
14, 18, 20, 22, 24, 26, 28, 30, 32, 34, 36, 38, 40, 42, 44, 46, 48, 50, 52, 54, 56, 58, 60, 62, 64, 66, 68, 70, 72, 74, 76, 78, 80, 82, 84, 86, 88, 90, 92, 94, 96, 98, 100

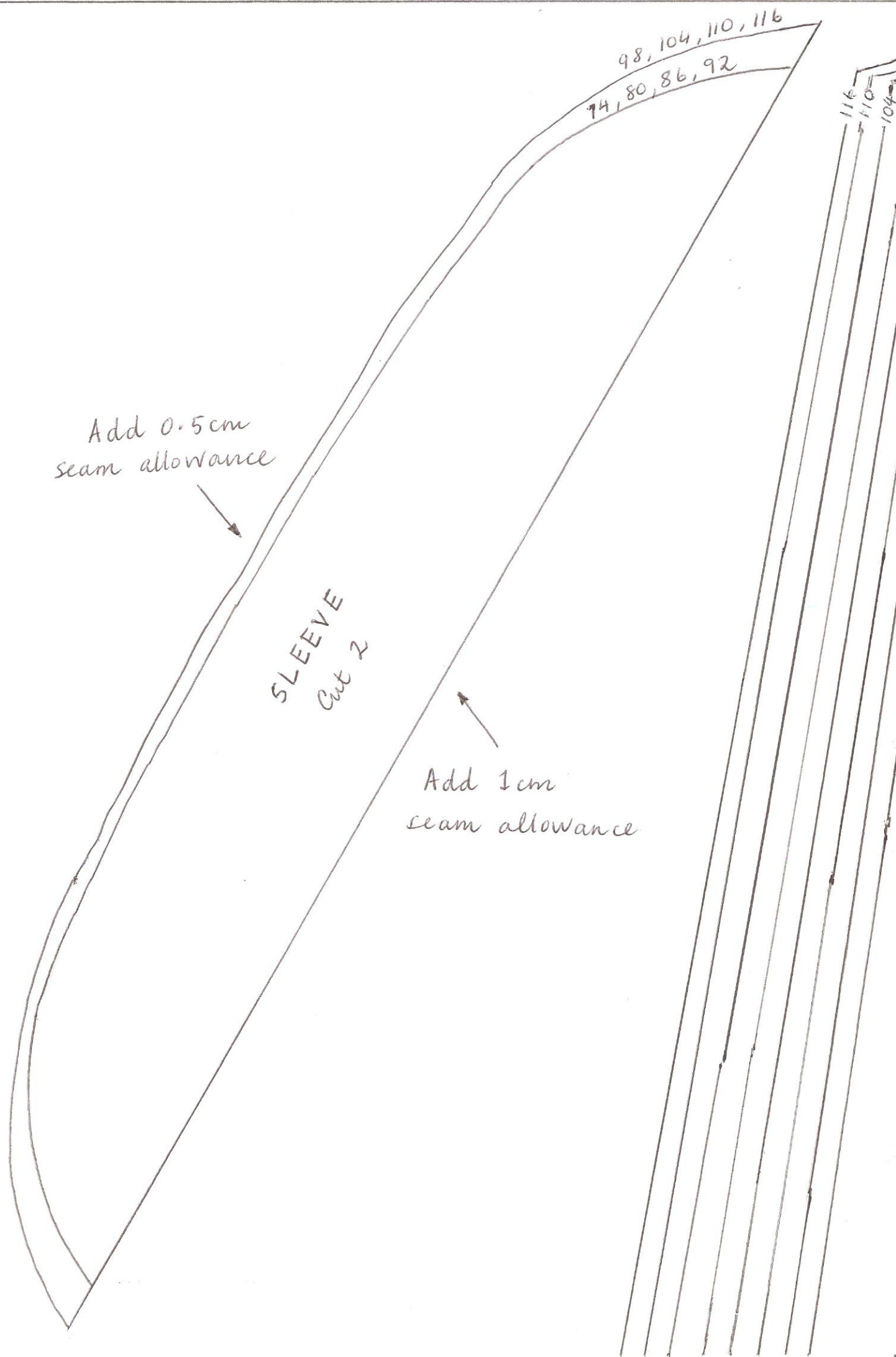






BIAS BINDING
Cut 1 on bias. Do not add seam allowance





98, 104, 110, 116
74, 80, 86, 92

Add 0.5cm
seam allowance

SLEEVE
Cut 2

Add 1cm
seam allowance

116
110
104

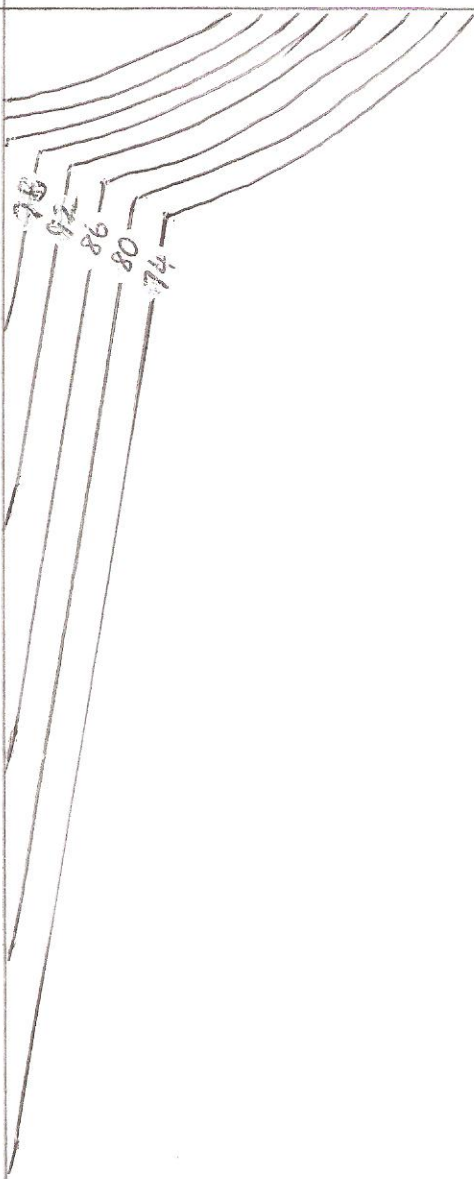
BACK

Cut 2

Add seam allowances:

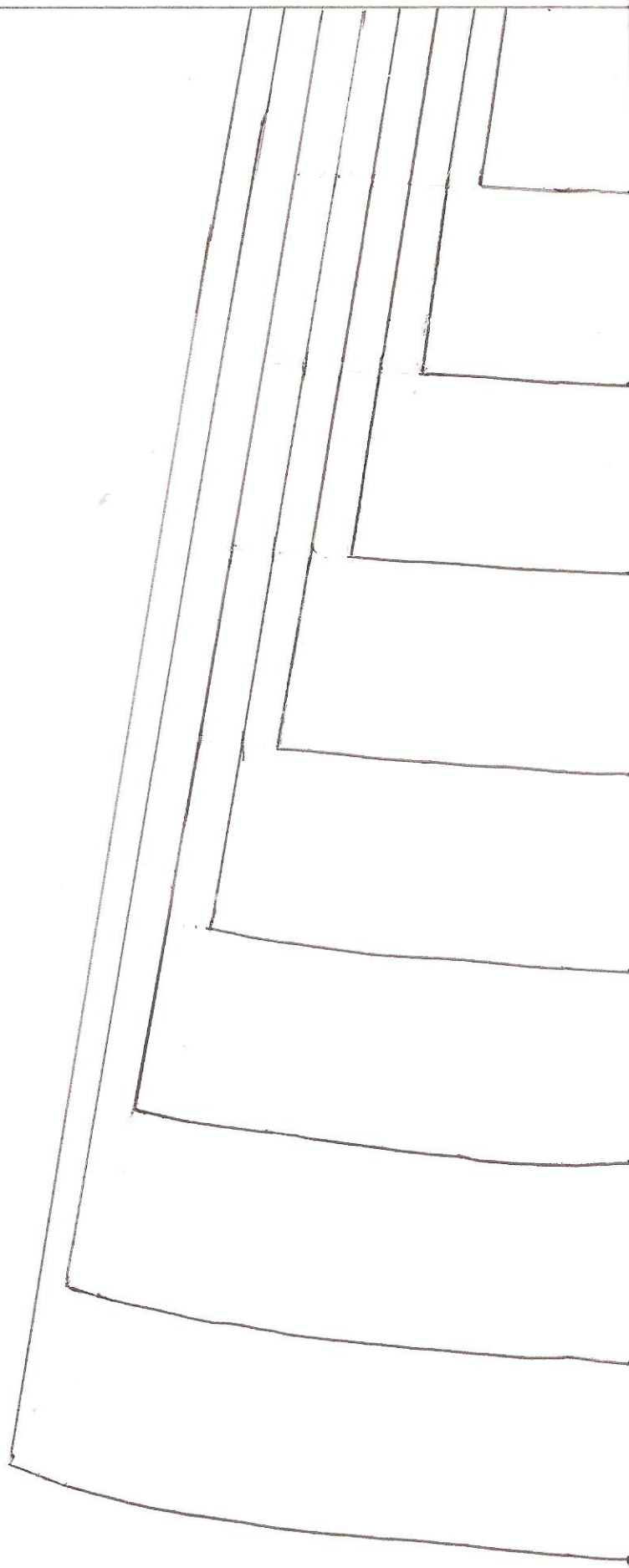
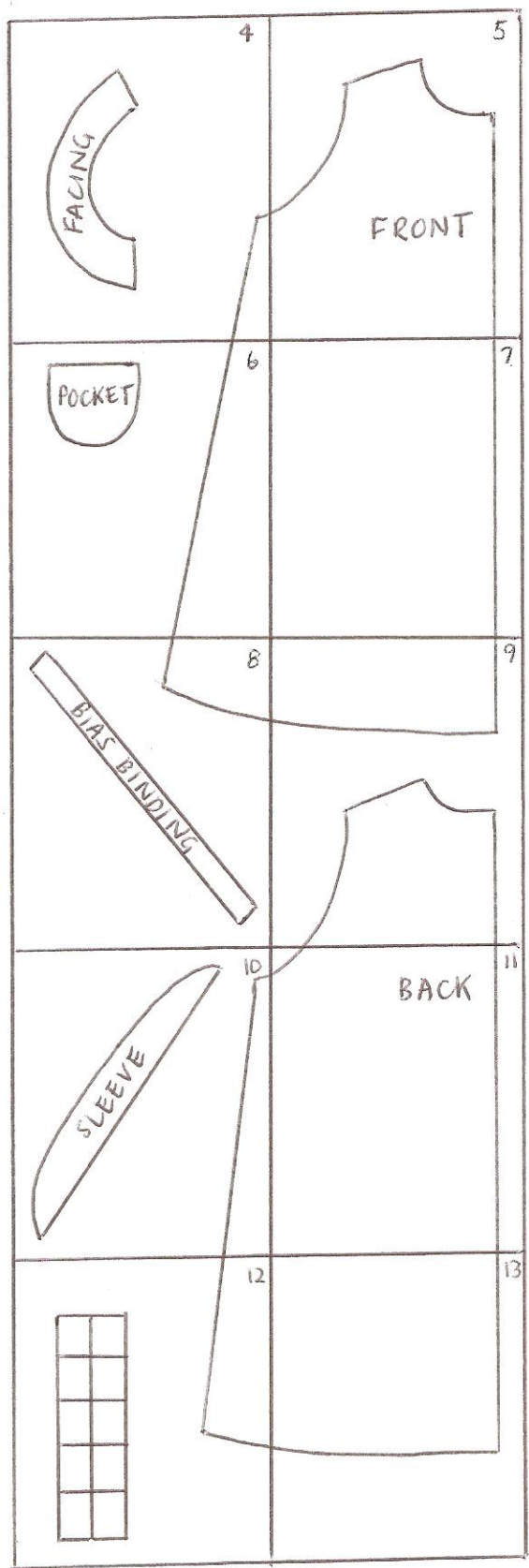
- Centre back - 1.5 cm
- Hem - 2.5 cm
- Remaining - 1 cm

- 80
- 86
- 92
- 98
- 104
- 110
- 116



grain line





74

80

86

92

98

104

110

116