

# The Perennial Tunic

A free pattern by sewpony  
for  
Sew, Mama, Sew!

[www.sewpony.blogspot.com](http://www.sewpony.blogspot.com)  
[www.sewmamsew.com/blog2](http://www.sewmamsew.com/blog2)



# The Perennial Tunic

All measurements for this pattern are in centimetres. To convert to inches or find a size suitable for a child of a certain age, use the chart below.

## Sizing chart

|                  |        |        |        |        |        |        |     |        |
|------------------|--------|--------|--------|--------|--------|--------|-----|--------|
| Height in cm     | 74     | 80     | 86     | 92     | 98     | 104    | 110 | 116    |
| Height in inches | 29 1/8 | 31 1/2 | 33 7/8 | 36 1/4 | 38 1/2 | 41 1/2 | 44  | 46 1/4 |
| Approximate age  | 6 mo   | 12 mo  | 18 mo  | 2 y    | 3 y    | 4y     | 5y  | 6y     |

*Aldrich, Winifred; Oxford; 1985*

Please note: Ages are approximate. For best fit, use the height guides.

## Fabric requirements

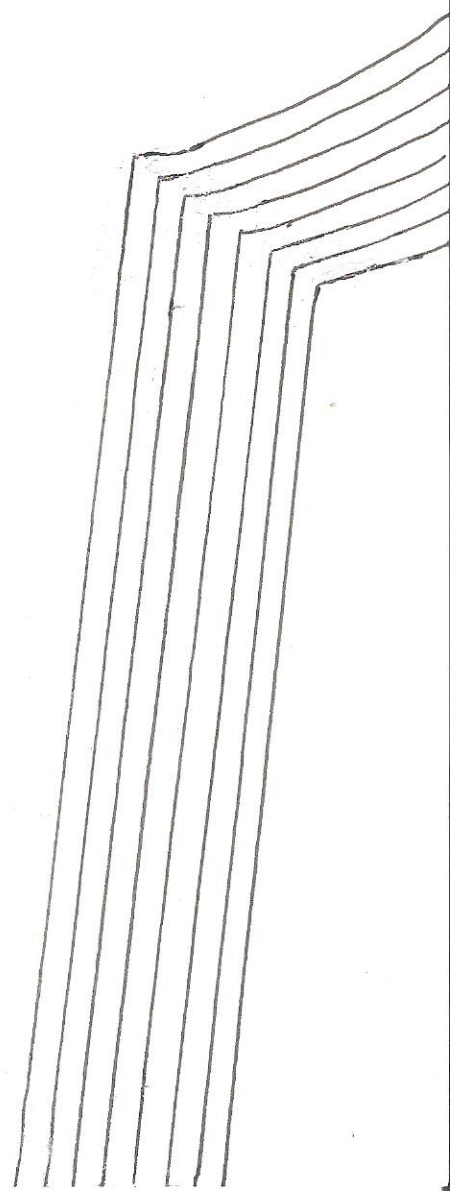
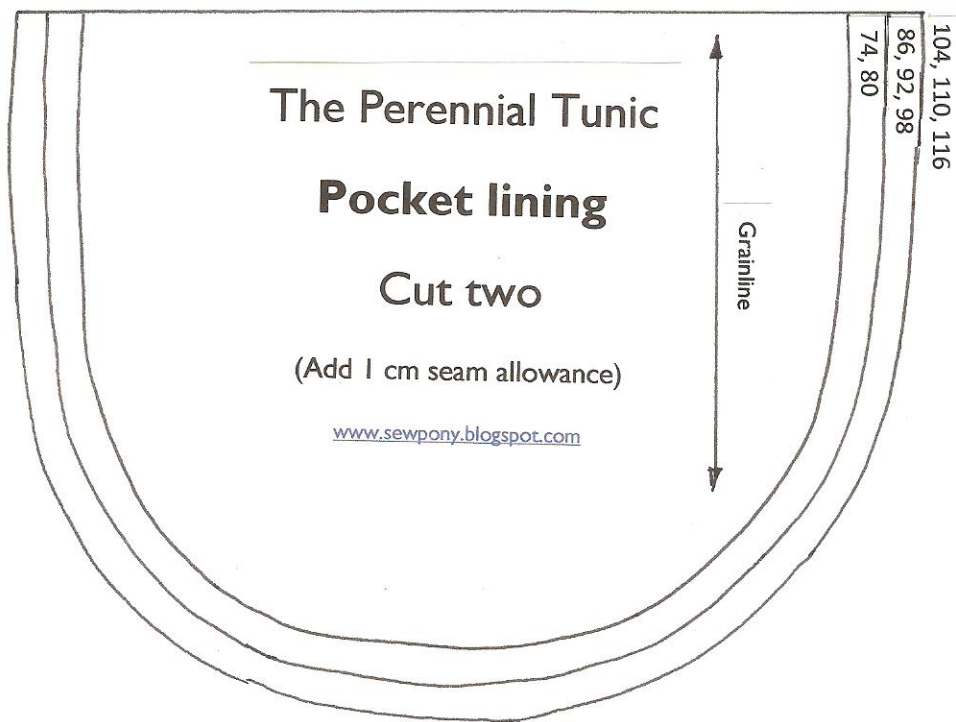
|   | Pattern size  |           |           |           |           |           |           |           |
|---|---|-----------|-----------|-----------|-----------|-----------|-----------|-----------|
| Fabric width                              | 74 cm   | 80cm      | 86cm      | 92cm      | 98cm      | 104cm     | 110cm     | 116cm     |
| 110cm/<br>45"                             | 100<br>40   | 110<br>44 | 120<br>48 | 130<br>52 | 140<br>56 | 150<br>60 | 160<br>64 | 170<br>68 |
| 150cm/<br>60"                             | 50<br>20  | 55<br>22  | 60<br>24  | 65<br>26  | 70<br>28  | 75<br>30  | 80<br>32  | 85<br>34  |
| Contrast fabric – for sleeves and pockets | 30cm/12 inches  |           |           |           |           |           |           |           |
| Notions                                   | <ul style="list-style-type: none"> <li>• One x 20-30mm diameter button and 8-10cm elastic/thin cord for button loop</li> <li>• 30cm of 6mm bias binding (if not making own). NB: 6mm is the width of finished binding (ie. Folded)</li> <li>• Ric rac or trim (optional)</li> </ul> |           |           |           |           |           |           |           |

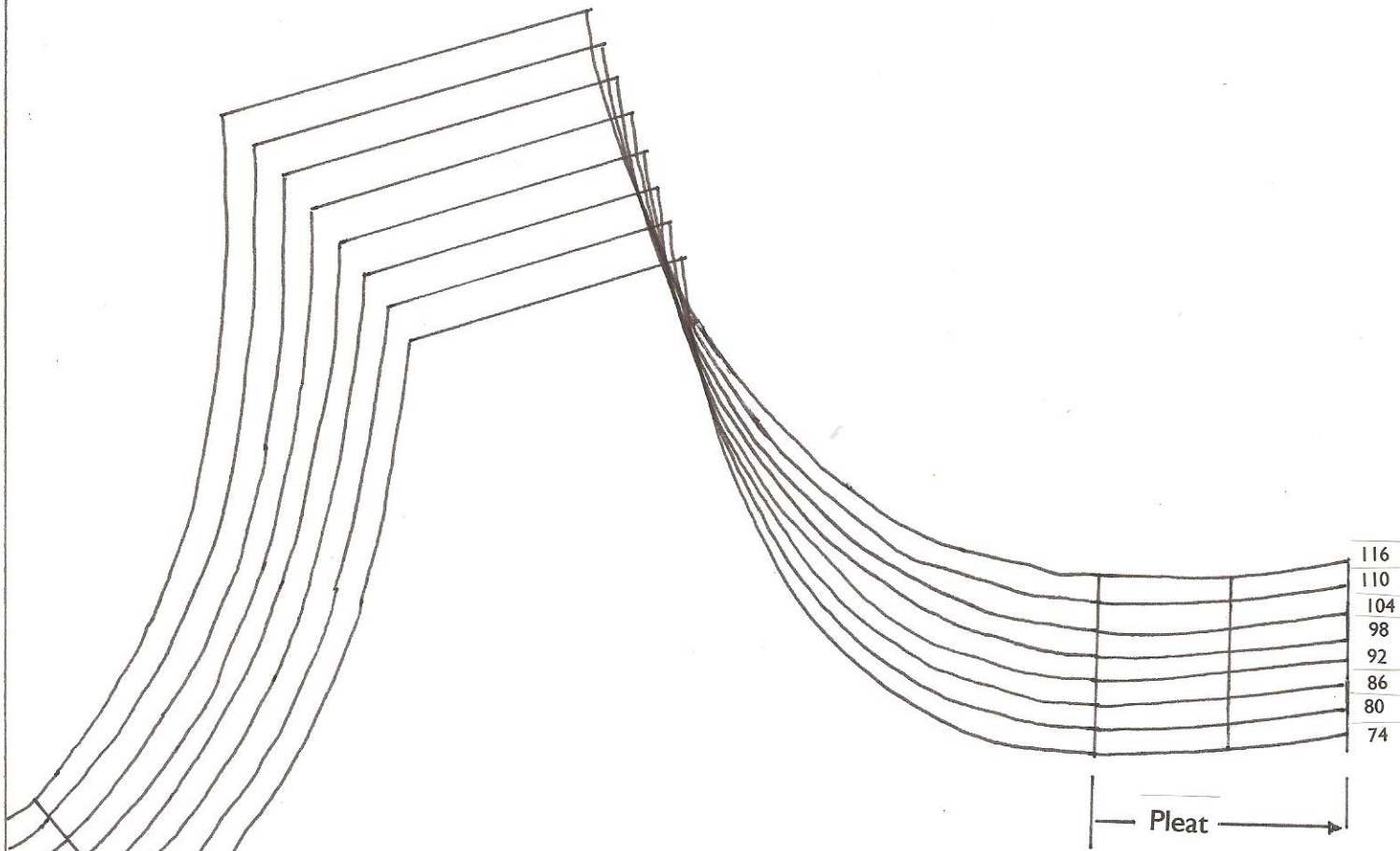
Please note: Fabric requirements are based on using fabric with a nap (obvious grain) or one directional print. If you are using a multi-directional print or fabric without nap, you may need less fabric.

# The Perennial Tunic

A pattern by sewpony for Sew, Mama, Sew!

[www.sewpony.blogspot.com](http://www.sewpony.blogspot.com) & [www.sewmamasew.com/blog2](http://www.sewmamasew.com/blog2)





# The Perennial Tunic

## Dress front

Cut one on fold

(Add 1 cm seam allowance, except hem – add 2.5 cm)

[www.sewpony.blogspot.com](http://www.sewpony.blogspot.com)

Grainline

FOLD

104, 110, 116

86, 92, 98

74, 80

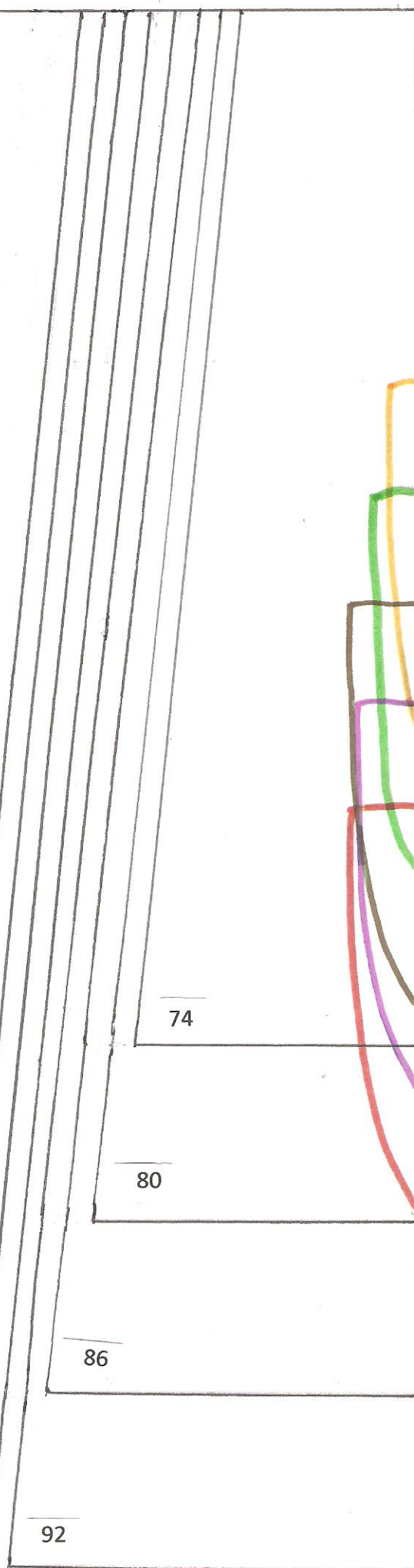
# The Perennial Tunic Sleeve | Cut two

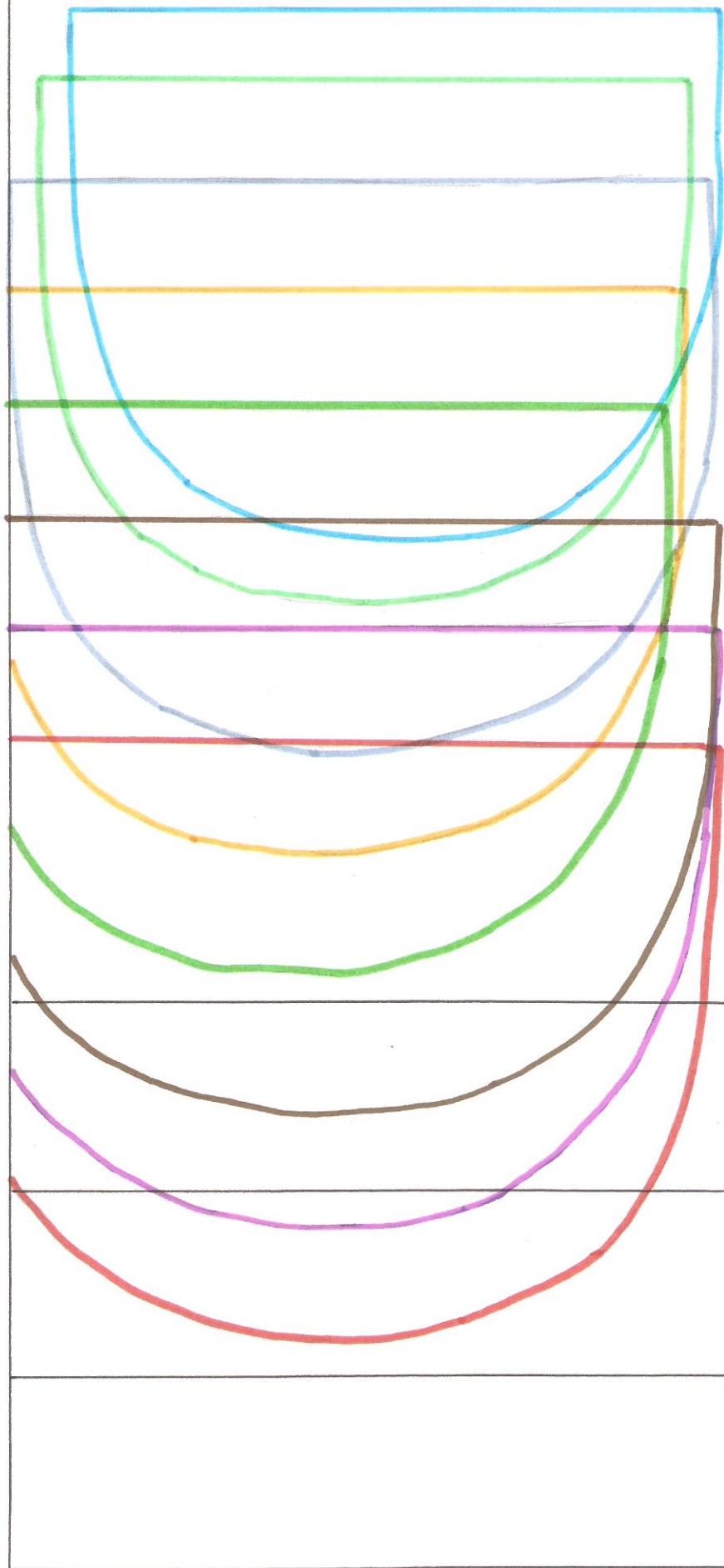
(Add 1 cm seam allowance along straight edge and 0.5 cm seam along curved edge)

Grainline



[www.sewpony.blogspot.com](http://www.sewpony.blogspot.com)





Pocket position

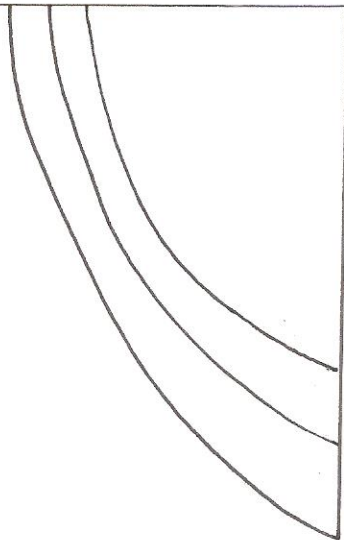
- 74
- 80
- 86
- 92
- 98
- 104
- 110
- 116

74

80

86

92



98

104

110

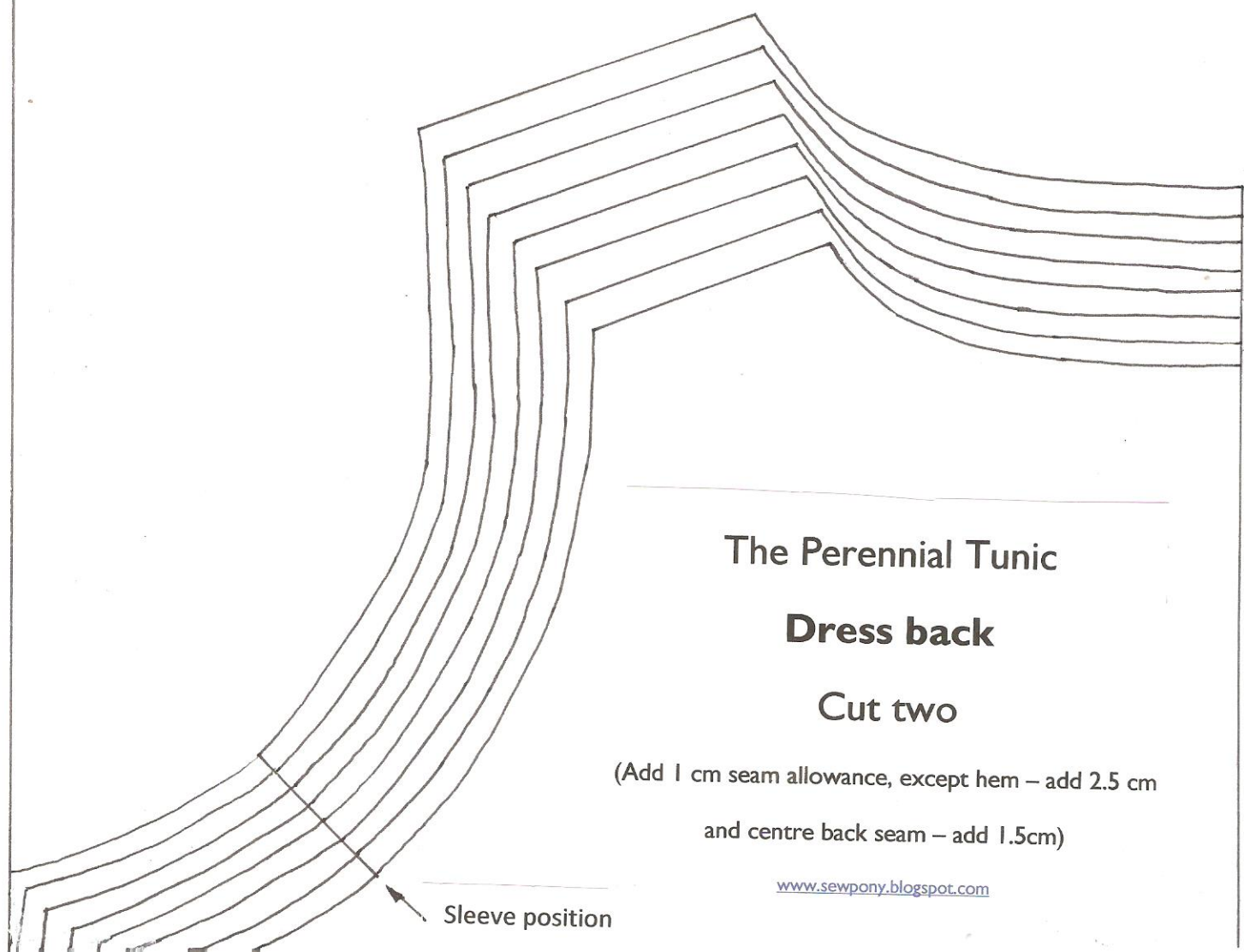
116

98

104

110

116



116  
110  
104  
98  
92  
86  
80  
74

# The Perennial Tunic

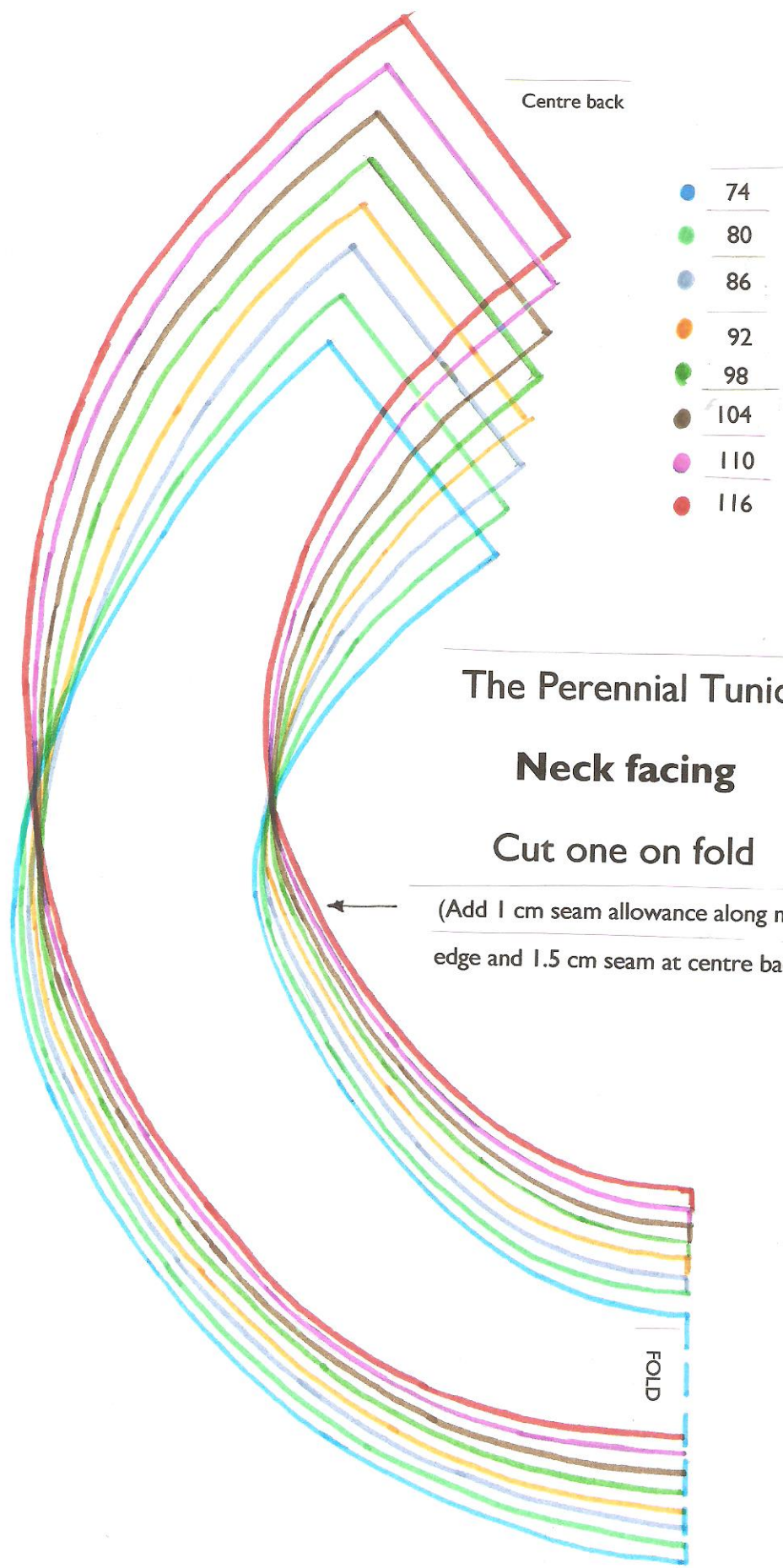
## Dress back

Cut two

(Add 1 cm seam allowance, except hem – add 2.5 cm  
and centre back seam – add 1.5cm)

Sleeve position





Centre back

- 74
- 80
- 86
- 92
- 98
- 104
- 110
- 116

### The Perennial Tunic

#### Neck facing

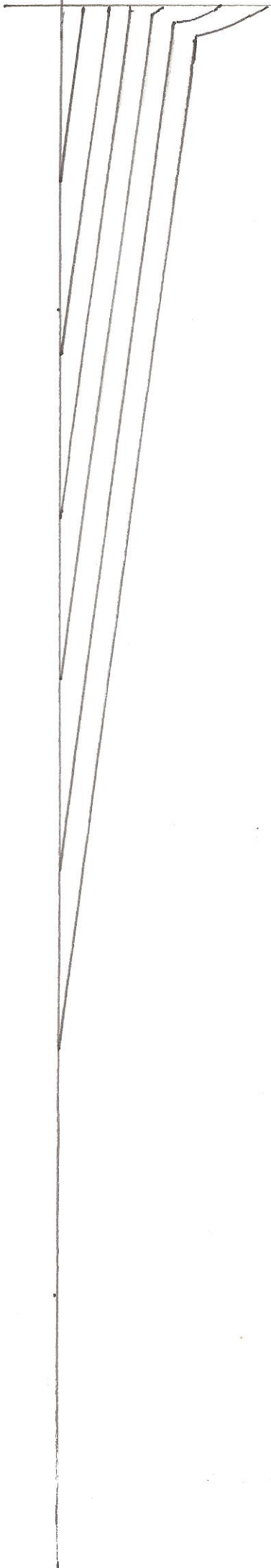
Cut one on fold

(Add 1 cm seam allowance along neck edge and 1.5 cm seam at centre back)

FOLD

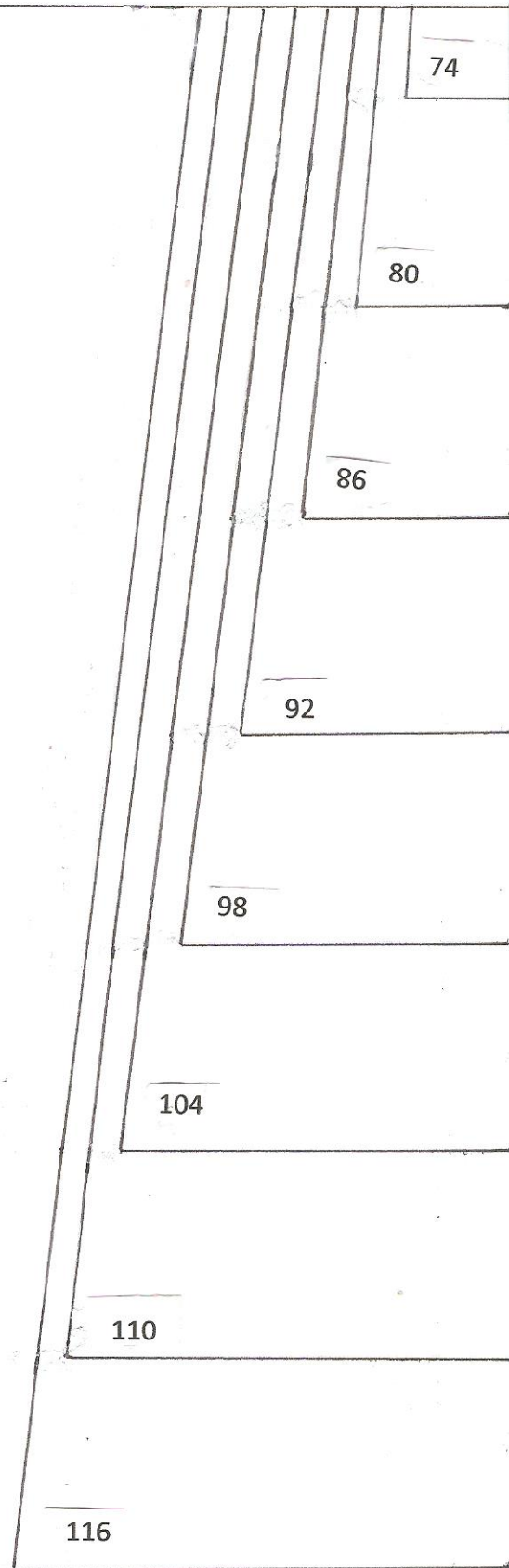
Back opening

Grainline



Page layout

|    |    |
|----|----|
| 3  | 4  |
| 5  | 6  |
| 7  | 8  |
| 9  | 10 |
| 11 | 12 |



74

80

86

92

98

104

110

116