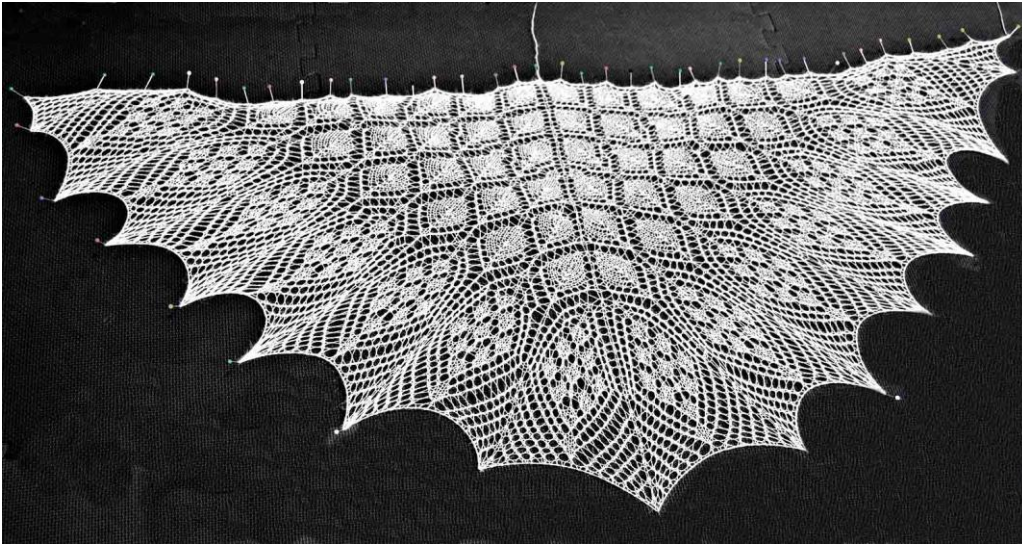


Ethereal Triangular Shawl

by
Lakshmi Juneja



Stitch Key

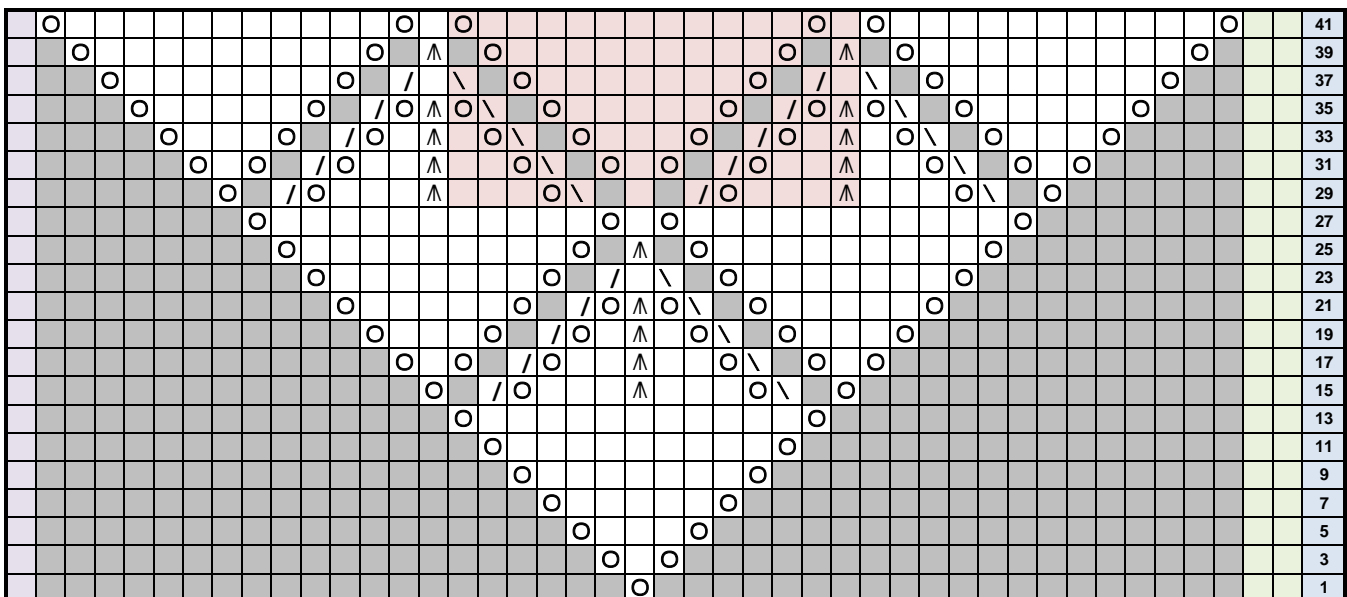
- knit
- yarnover
- \ ssk
- / k2tog
- ^ slip 2tog, k1, pss0
- ⋈ knit 3 tog
- λ slip 1 knitwise, k2 tog, pss0
- No stitch

Garter Border Stitches

Center Stitch

© 2011 Lakshmi Juneja
<http://Patternsfrommyhead.blogspot.com>
ownhead@gmail.com

Chart 1



Revision done by Karen Strauss (like2makethings) and Sandra Oakeshott (sandralice) on Ravelry with permission from the designer. Instruction layout and design by Karen Strauss.

Materials

1 skein Misti Alpaca Lace Solid in Ivory - Lace 2-ply 100% Alpaca -437 yards
 Circular knitting needle 29 inches or longer - size 3.5 mm/US size 4
 Finished size after blocking is 57 inches across and 27 inches deep at center

Notes

Shawl can be knit in heavier weight yarns. Yardage and needle size would need to be adjusted to compensate.
 Gauge is not important. Select needle size for weight of yarn and lacy look desired.

Pink shading on charts shows repeats. Half of shawl is shown in Chart 1 and Chart A. Repeat for other side of center stitch. Chart 2 B shows the right and left sides of the shawl. A dotted line indicates where the charts should be joined

Row count graphs show the number of stitches after you complete the row indicated. Extra repeats were added to the Chart 1 Repeats graph in case you wish to enlarge or reduce the shawl.

Instructions

Cast on 5 stitches and work 2 rows of garter stitch
 Knit row 1 on Chart 1 (k2, yo, k1, yo, k2) You will have 7 stitches after completing row 1. See Row Count Chart at right.

To make shawl in size shown, knit rows 1-42 of Chart 1 one time. Next, knit rows 29-42 three times. Shawl can be enlarged or reduced by knitting more or less repeats of Rows 29-42. Always end on Row 42 of Chart 1 before moving to Chart 2 A.
 Knit rows 29-40 of Chart 2 A one time.
 Knit rows 41-82 on Chart 2 B one time.

Finishing

Bind off using a stretchy cast off. k1, *k1, transfer two stitches back to left needle and k2tog through the back loops*. Repeat across.
 Block.

Chart 1	
Row	Count
41	87
39	75
37	71
35	67
33	63
31	59
29	55
27	59
25	51
23	47
21	43
19	39
17	35
15	31
13	31
11	27
9	23
7	19
5	15
3	11
1	7

Chart 2 Repeats				
Row	2x*	3x*	4x*	5x*
29	127	151	175	199
31	131	155	179	203
33	135	159	183	207
35	139	163	187	211
37	143	167	191	215
39	147	171	195	219
41	171	199	227	255
43	195	227	259	291
45	219	255	291	327
47	243	283	323	363
49	267	311	355	399
51	291	339	387	435
53	315	367	419	471
55	317	369	421	473
57	319	371	423	475
59	321	373	425	477
61	323	375	427	479
63	325	377	429	481
65	327	379	431	483
67	329	381	433	485
69	331	383	435	487
71	333	385	437	489
73	335	387	439	491
75	337	389	441	493
77	339	391	443	495
79	341	393	445	497
81	367	423	479	535

* Indicates the number of times Chart 1, Rows 29-42 were knitted after knitting Rows 1-42, one time.

Chart 1 Repeats					
Row	1x	2x	3x	4x	5x
41	115	143	171	199	227
39	99	123	147	171	195
37	95	119	143	167	191
35	91	115	139	163	187
33	87	111	135	159	183
31	83	107	131	155	179
29	79	103	127	151	175

Chart 2 A

○	\	○	\	○	○	/	○	/	○	∧	○	\	○	\	○	○	/	○	/	○	∧	○	\	○	\	○	○	/	○	/	○					3 9					
		○	\	○			○	/	○	/	\			○	\	○			○	/	○	/	\			○	\	○			○	/	○					3 7			
			○	\	○			○	/	○	/	∧	○	\	○	\	○			○	/	○	/	∧	○	\	○	\	○			○	/	○					3 5		
				○				○	/	○				○	\	○				○	/	○				○	\	○				○	/	○					3 3		
					○				○	/	○				○	\	○				○	/	○				○	\	○				○	/	○					3 1	
						○				○	/	○				○	\	○				○	/	○				○	\	○				○	/	○					2 9

