

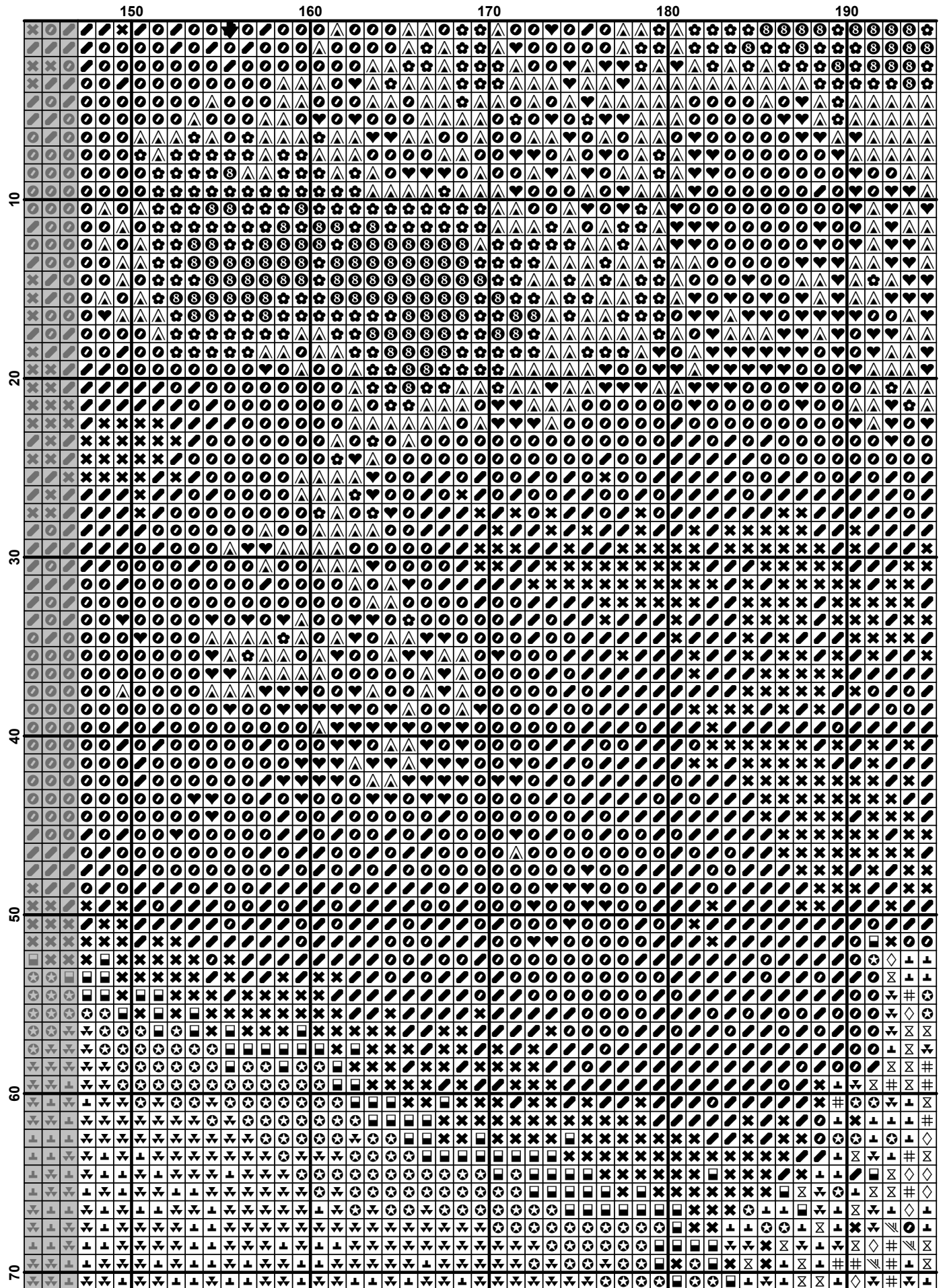
XUMEDA

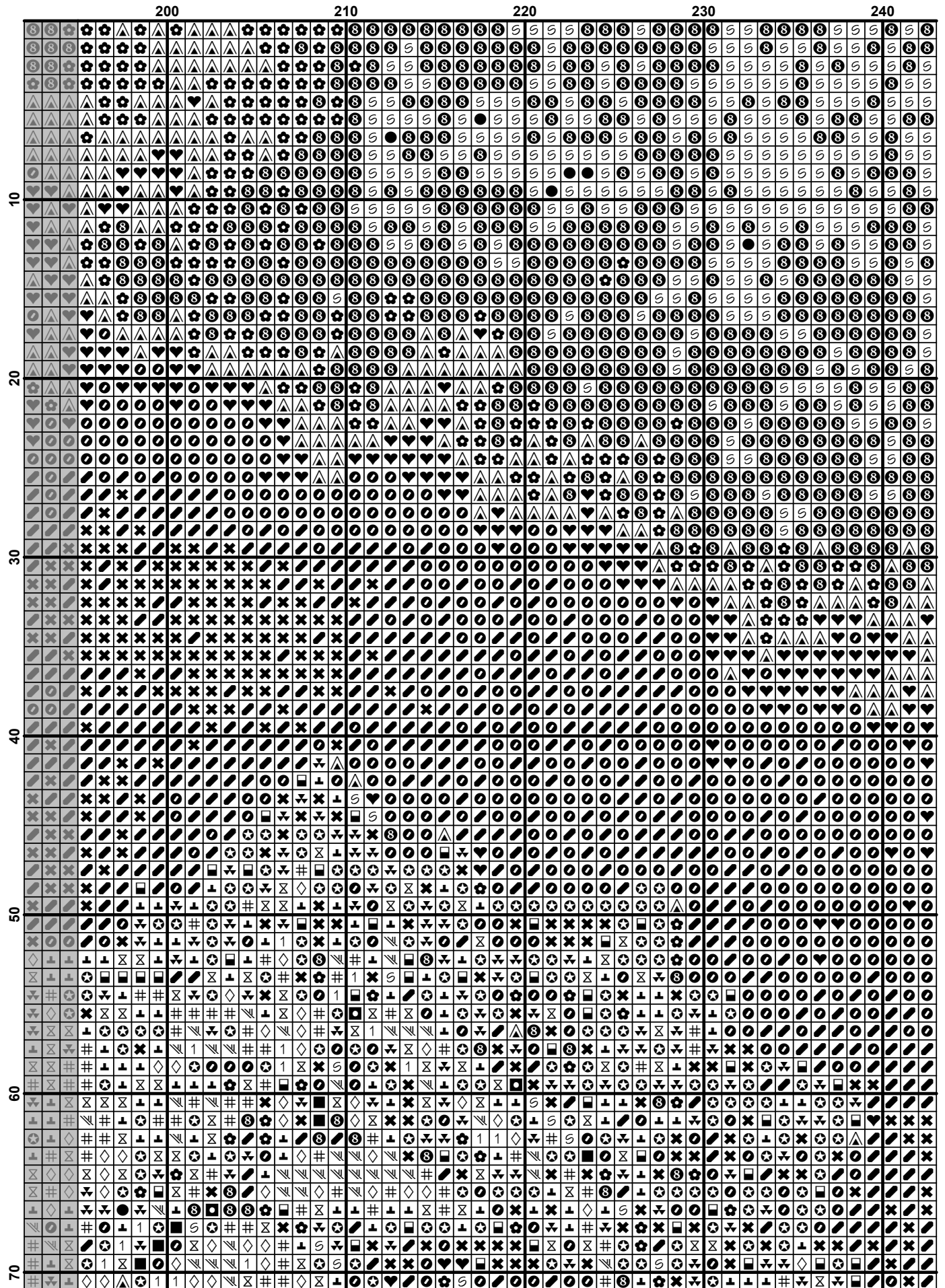
По картине художника Окужанова Усра

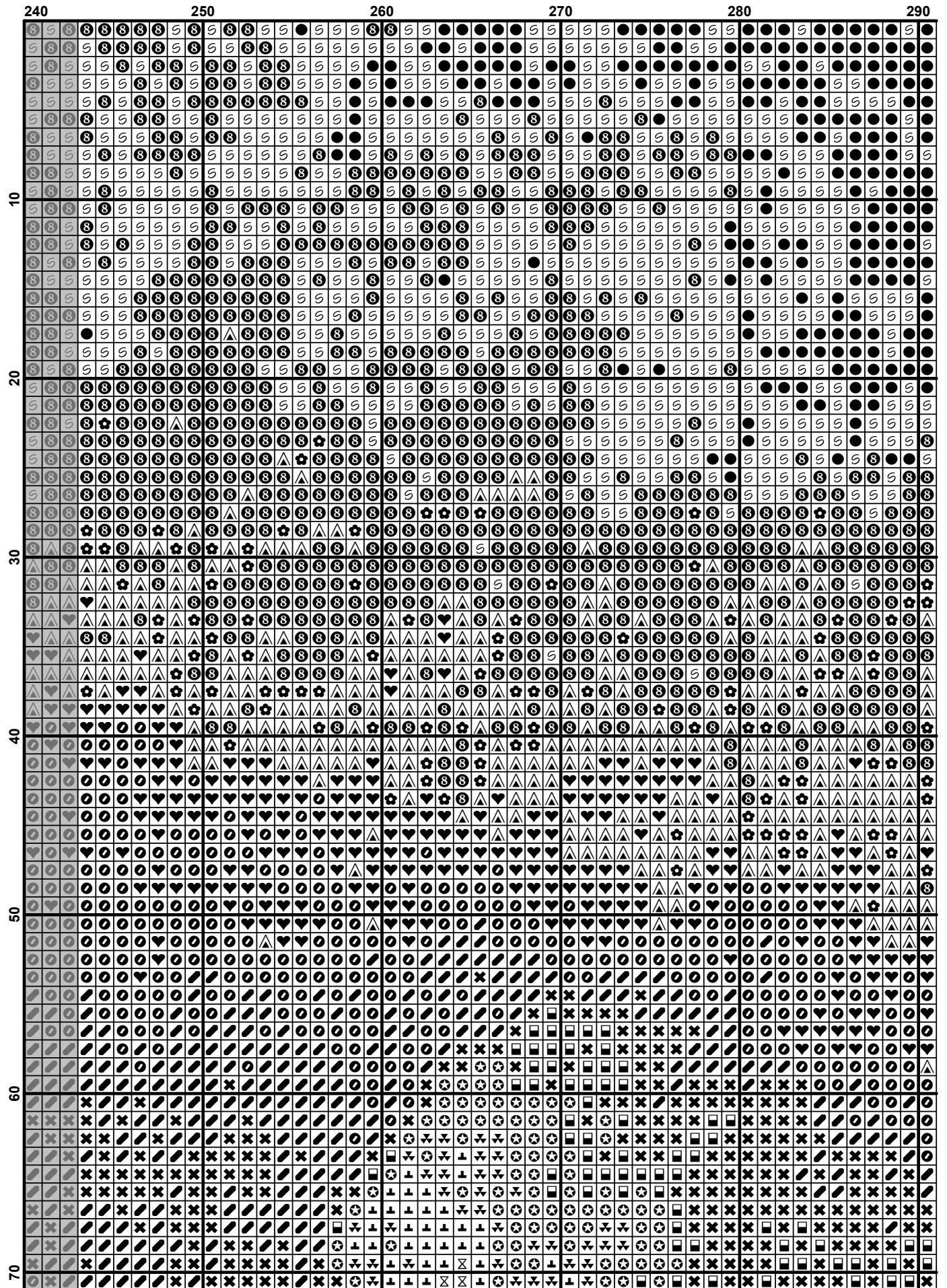
«Луга»

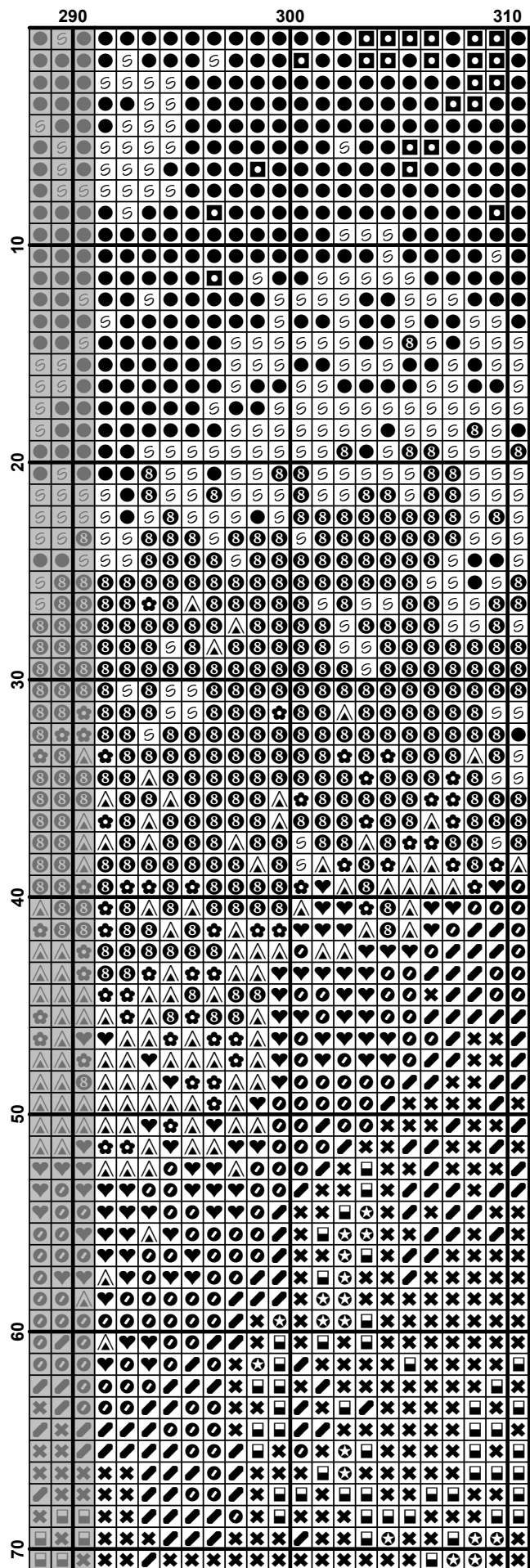
Finished Design Size 310w X 464h Stitches
2016 z.



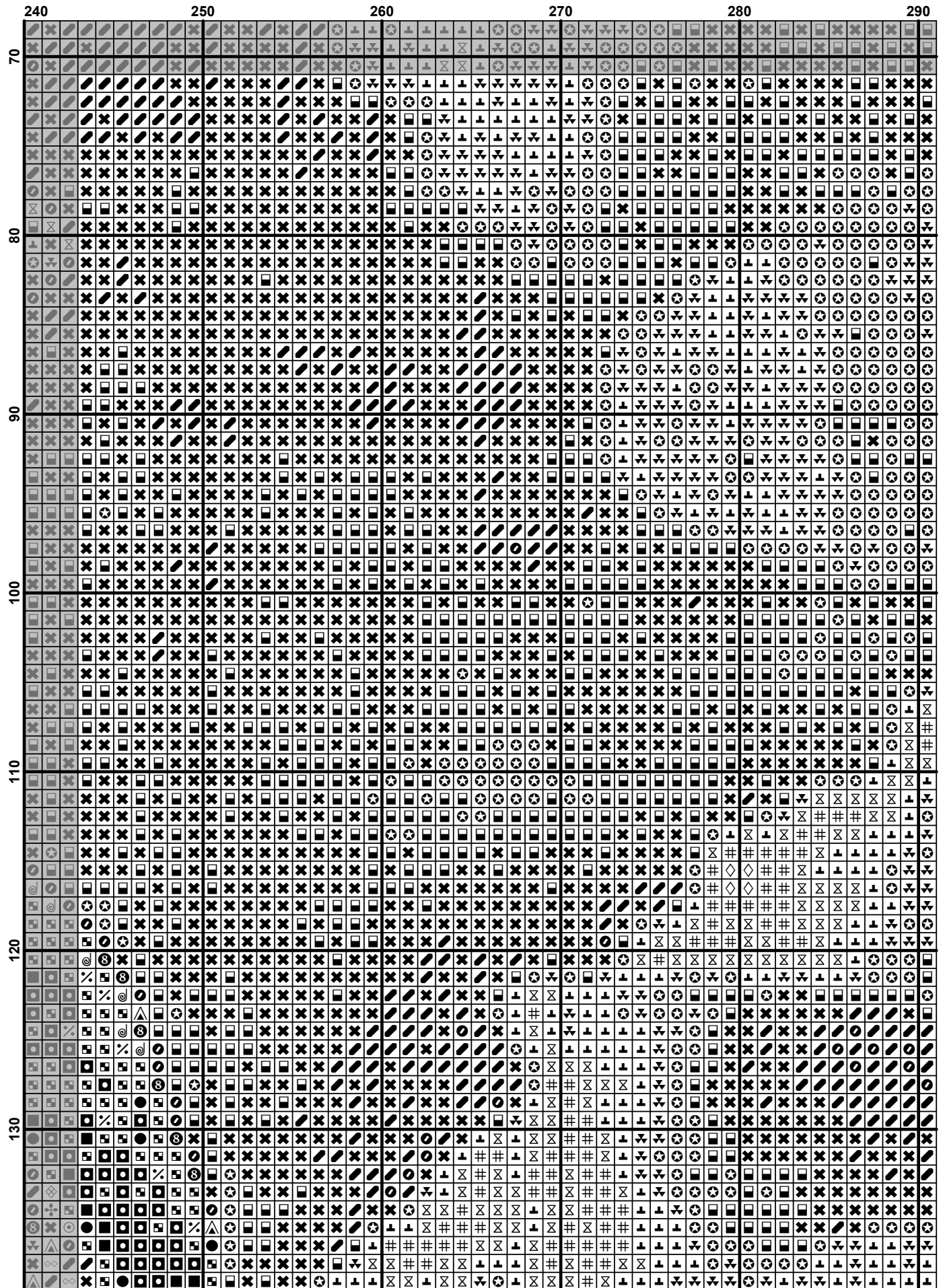


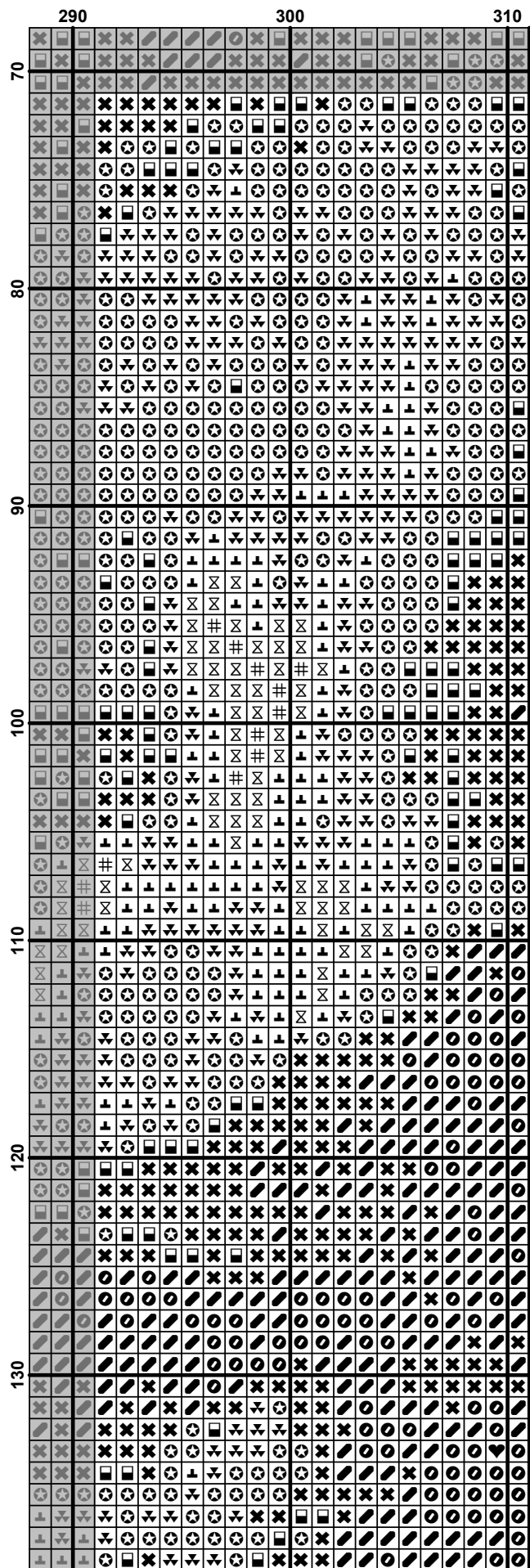


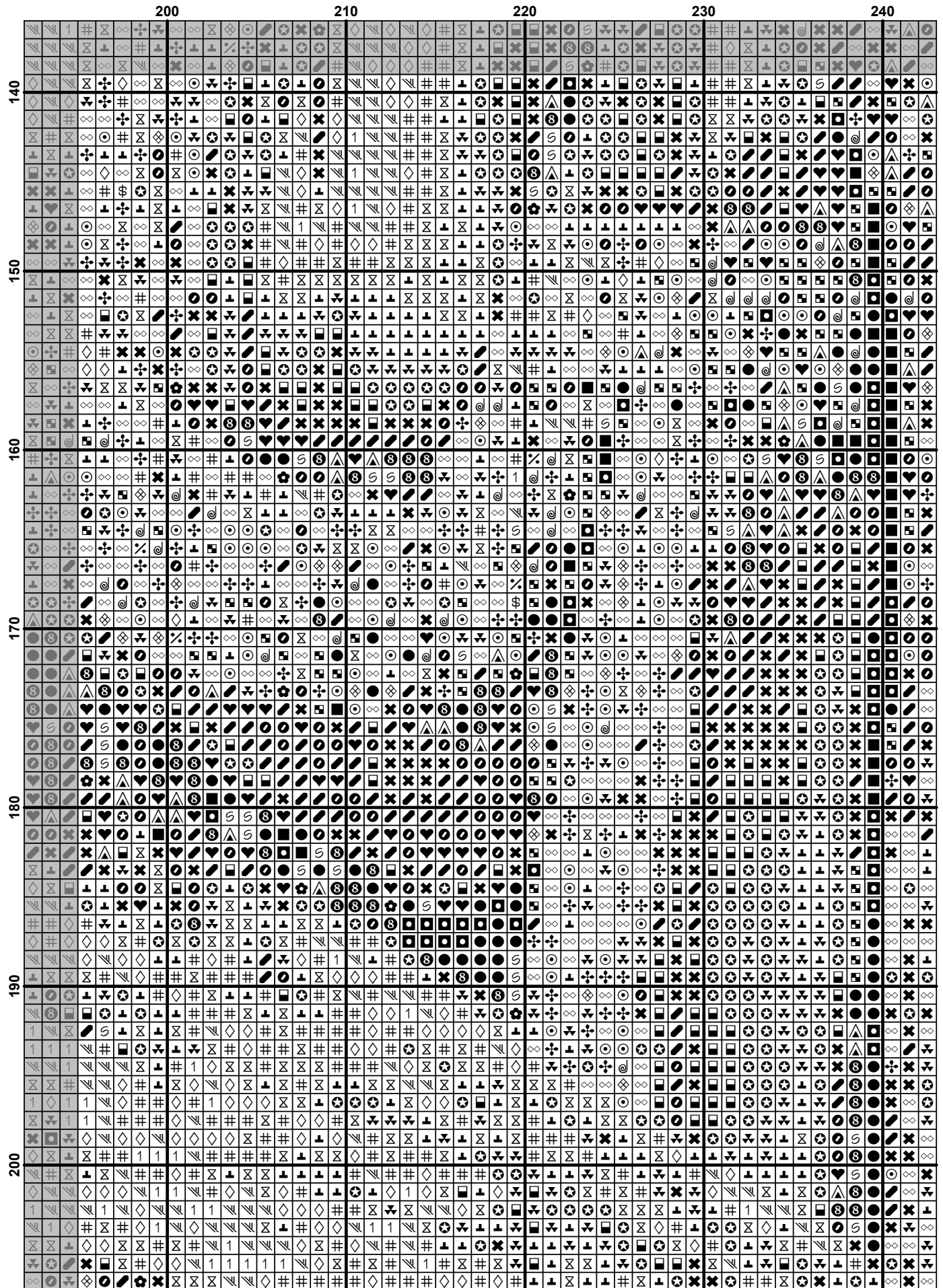


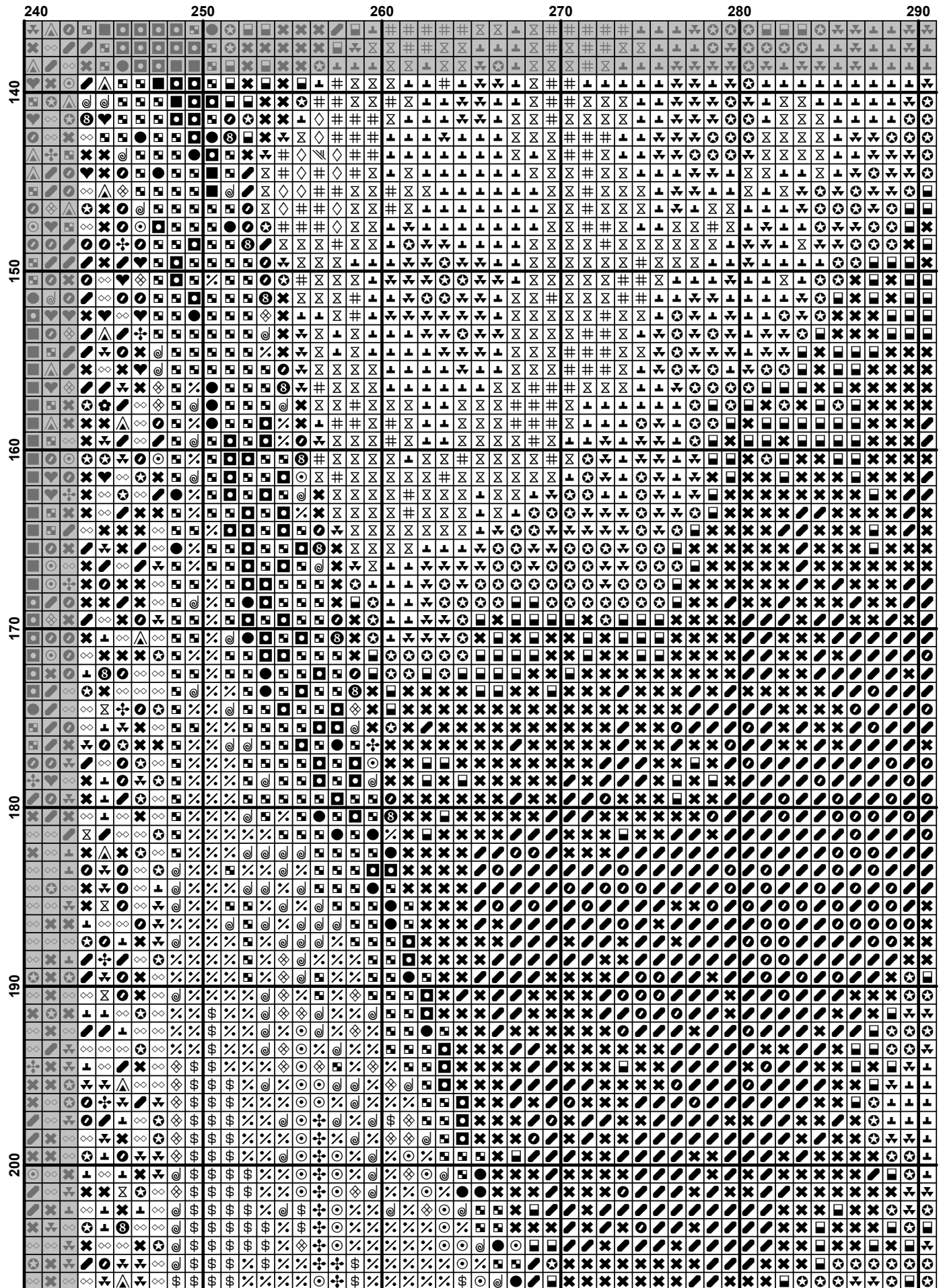


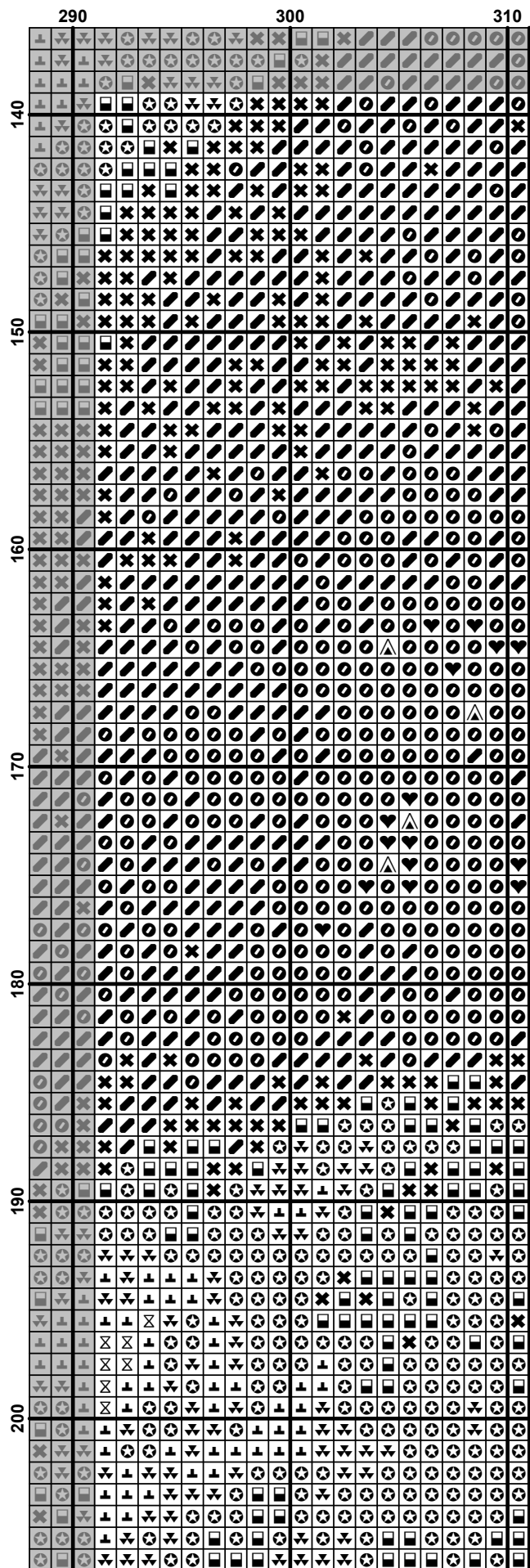
	10	20	30	40	50
70
80
90
100
110
120
130





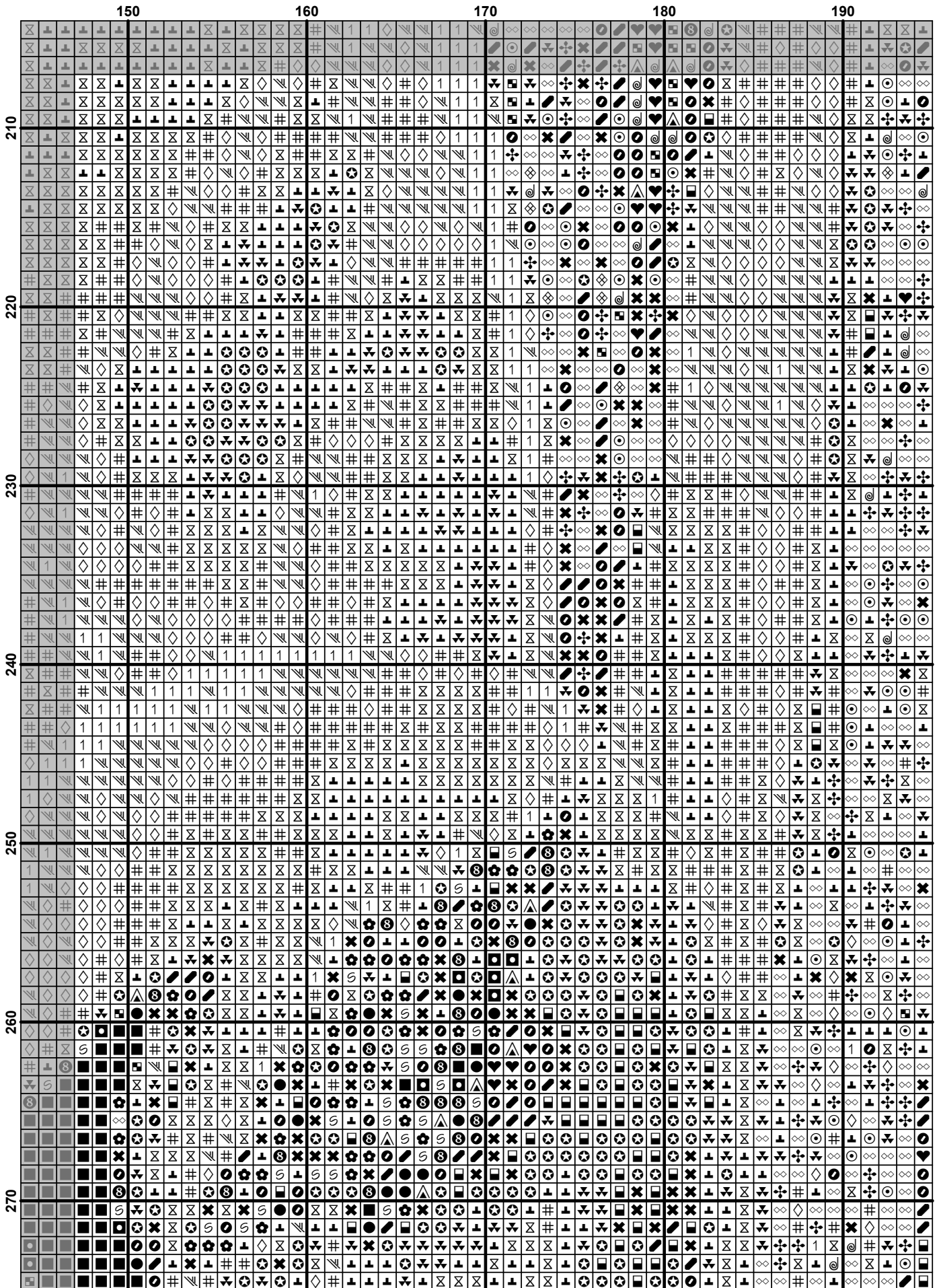


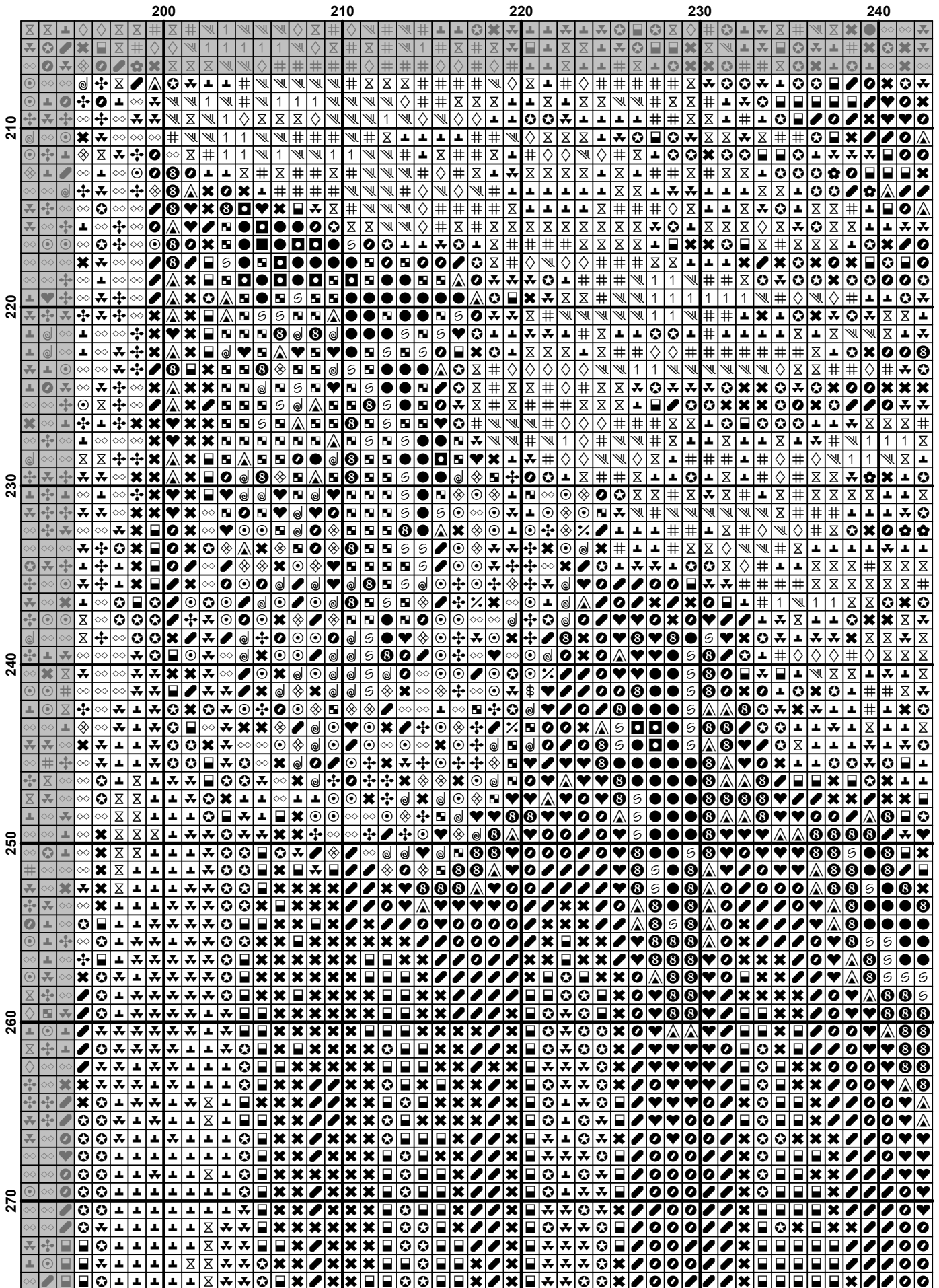


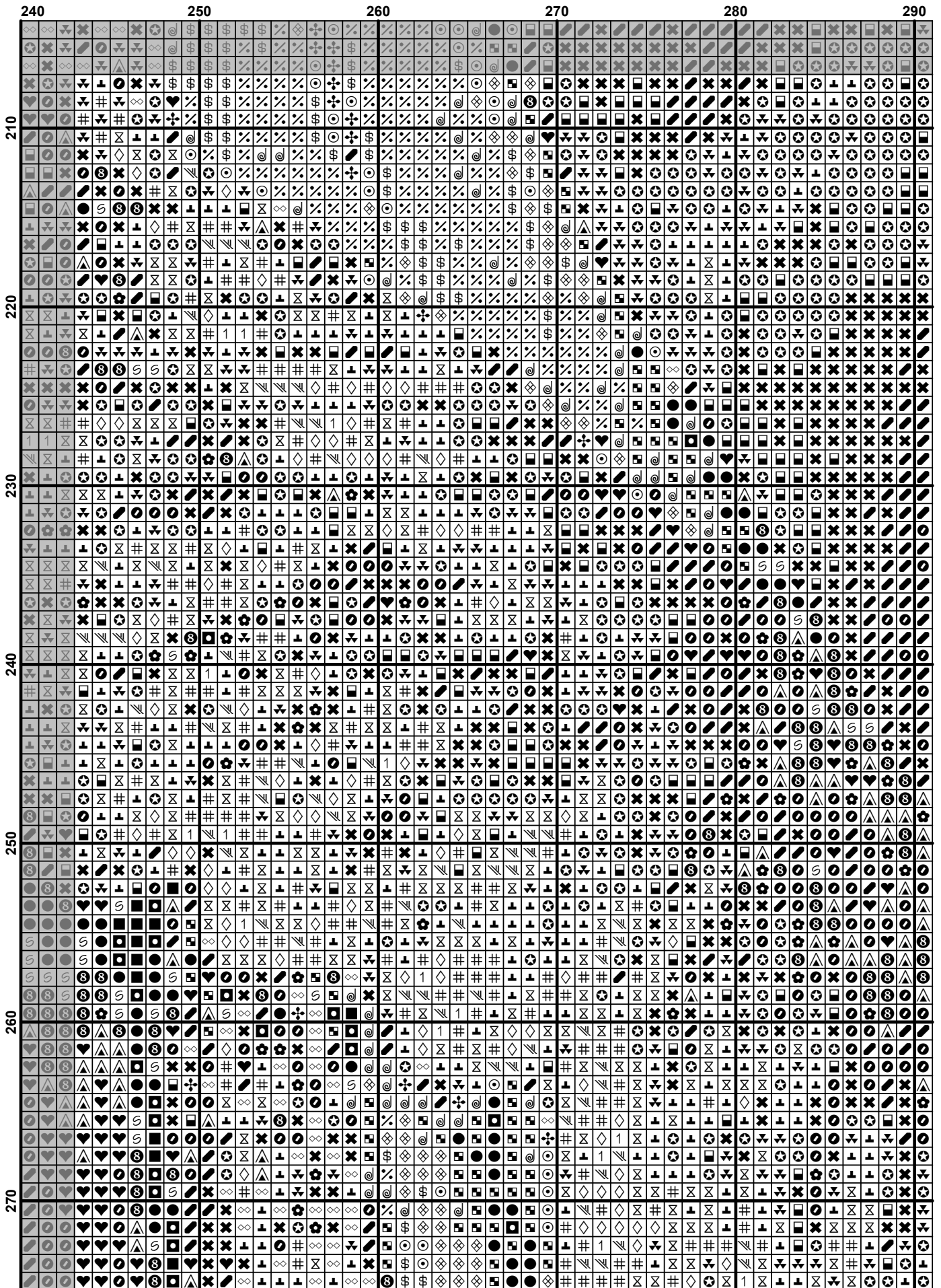


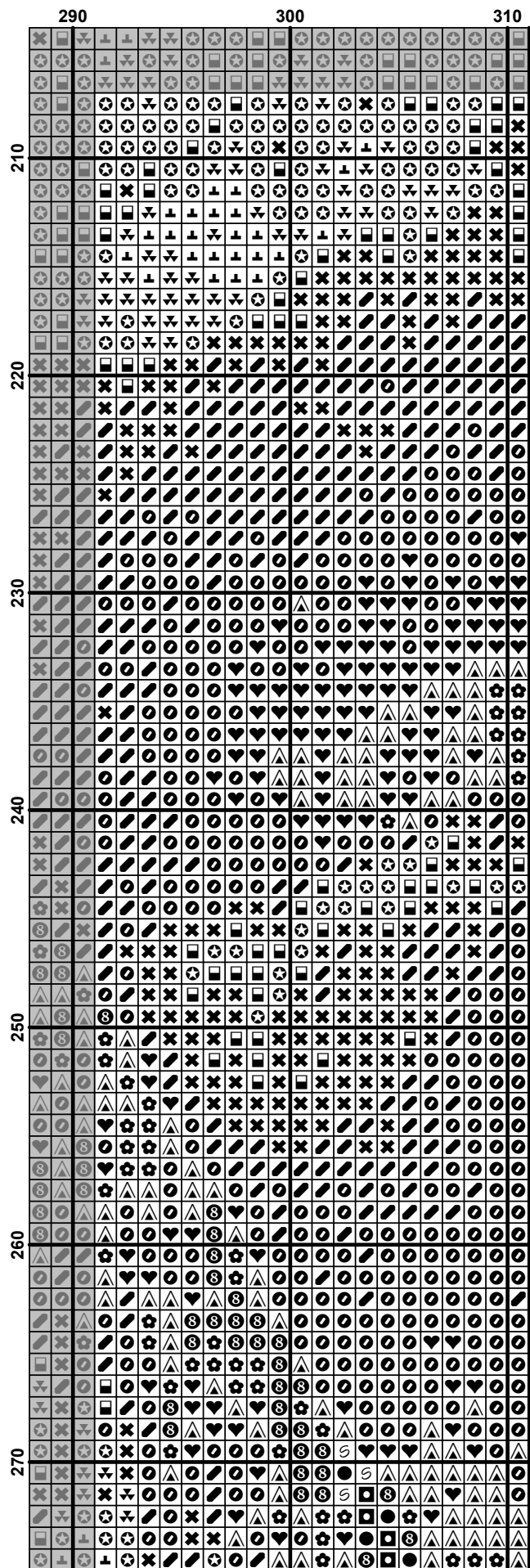
	10	20	30	40	50
210
220
230
240
250
260
270

	100	110	120	130	140
210	##	##	##	##	##
220	##	##	##	##	##
230	##	##	##	##	##
240	##	##	##	##	##
250	##	##	##	##	##
260	##	##	##	##	##
270	##	##	##	##	##



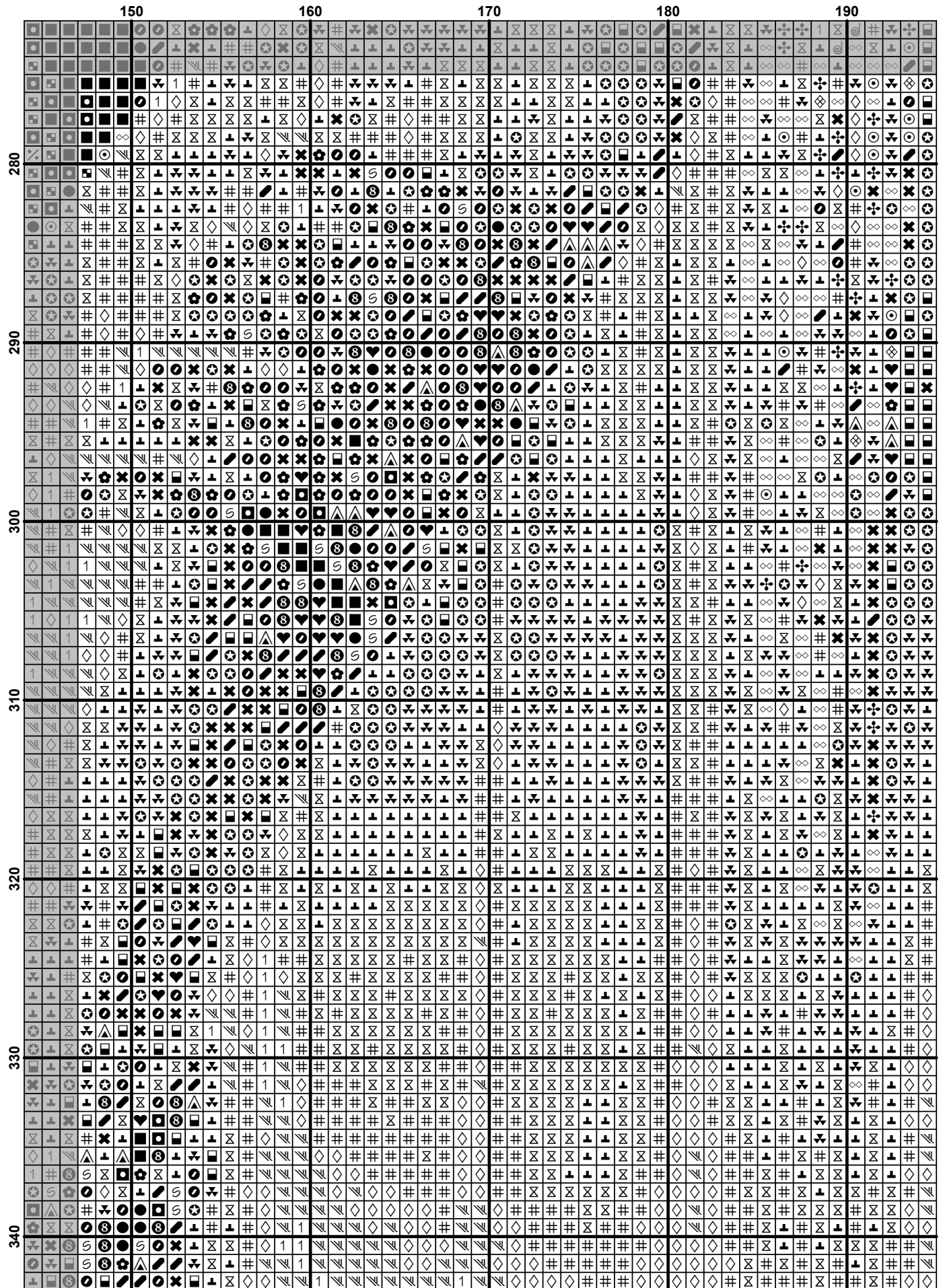






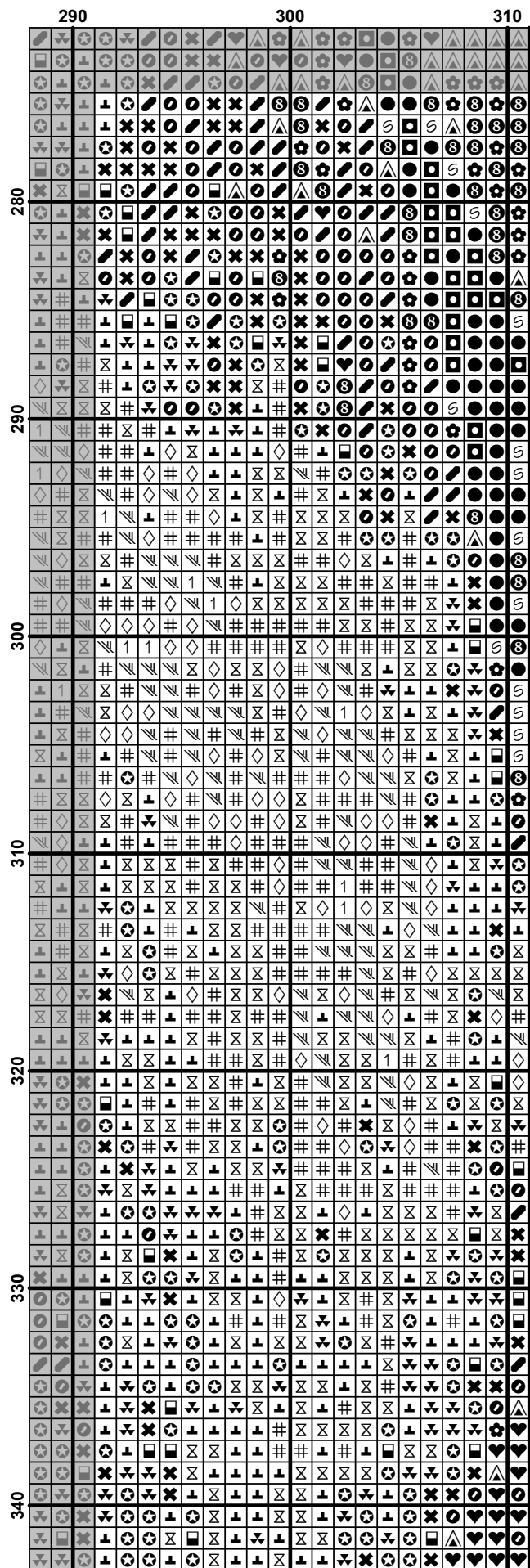
	10	20	30	40	50
280	1	1	1	1	1
281	1	1	1	1	1
282	1	1	1	1	1
283	1	1	1	1	1
284	1	1	1	1	1
285	1	1	1	1	1
286	1	1	1	1	1
287	1	1	1	1	1
288	1	1	1	1	1
289	1	1	1	1	1
290	1	1	1	1	1
291	1	1	1	1	1
292	1	1	1	1	1
293	1	1	1	1	1
294	1	1	1	1	1
295	1	1	1	1	1
296	1	1	1	1	1
297	1	1	1	1	1
298	1	1	1	1	1
299	1	1	1	1	1
300	1	1	1	1	1
301	1	1	1	1	1
302	1	1	1	1	1
303	1	1	1	1	1
304	1	1	1	1	1
305	1	1	1	1	1
306	1	1	1	1	1
307	1	1	1	1	1
308	1	1	1	1	1
309	1	1	1	1	1
310	1	1	1	1	1
311	1	1	1	1	1
312	1	1	1	1	1
313	1	1	1	1	1
314	1	1	1	1	1
315	1	1	1	1	1
316	1	1	1	1	1
317	1	1	1	1	1
318	1	1	1	1	1
319	1	1	1	1	1
320	1	1	1	1	1
321	1	1	1	1	1
322	1	1	1	1	1
323	1	1	1	1	1
324	1	1	1	1	1
325	1	1	1	1	1
326	1	1	1	1	1
327	1	1	1	1	1
328	1	1	1	1	1
329	1	1	1	1	1
330	1	1	1	1	1
331	1	1	1	1	1
332	1	1	1	1	1
333	1	1	1	1	1
334	1	1	1	1	1
335	1	1	1	1	1
336	1	1	1	1	1
337	1	1	1	1	1
338	1	1	1	1	1
339	1	1	1	1	1
340	1	1	1	1	1

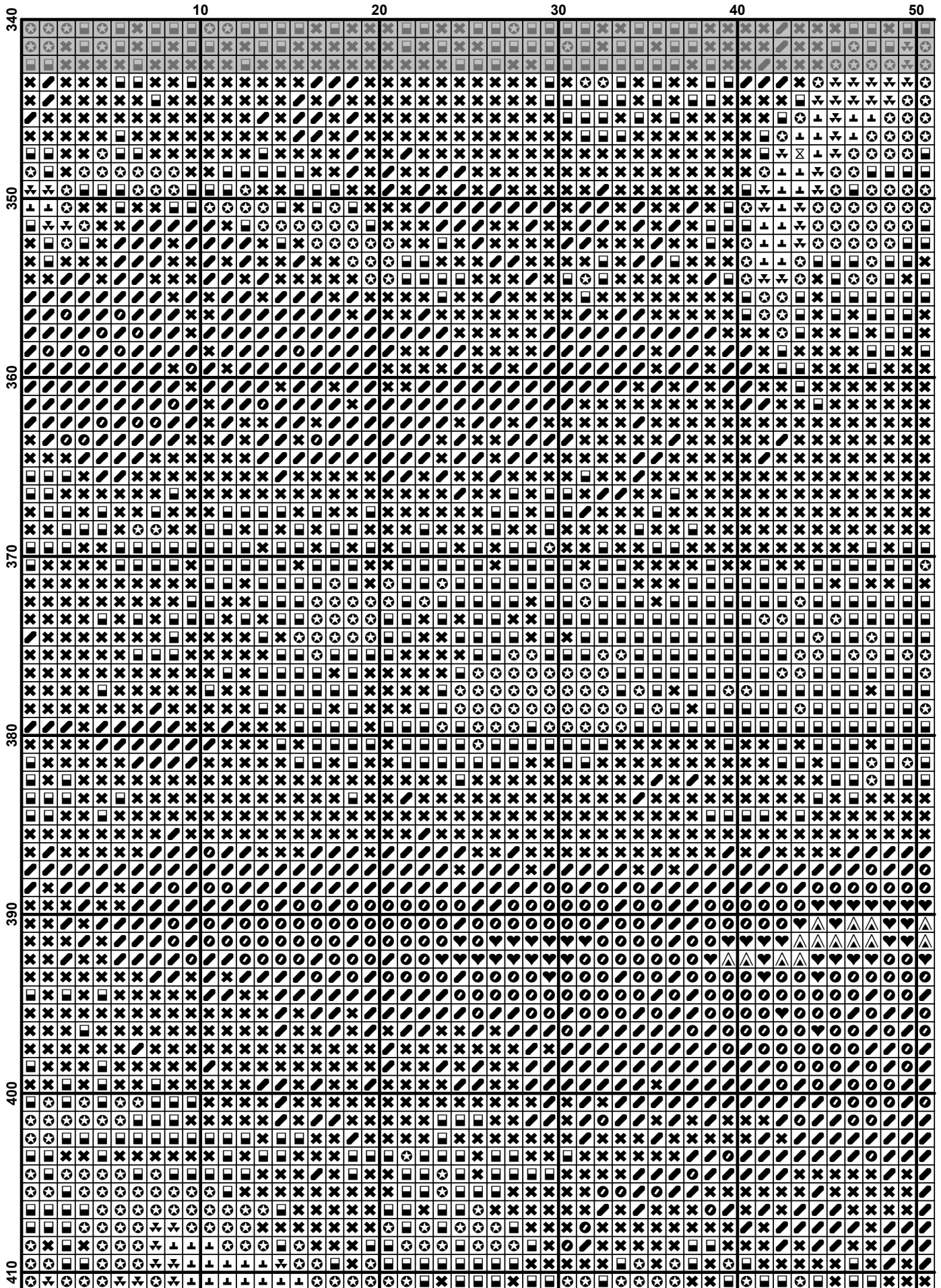
	100	110	120	130	140
280
290
300
310
320
330
340

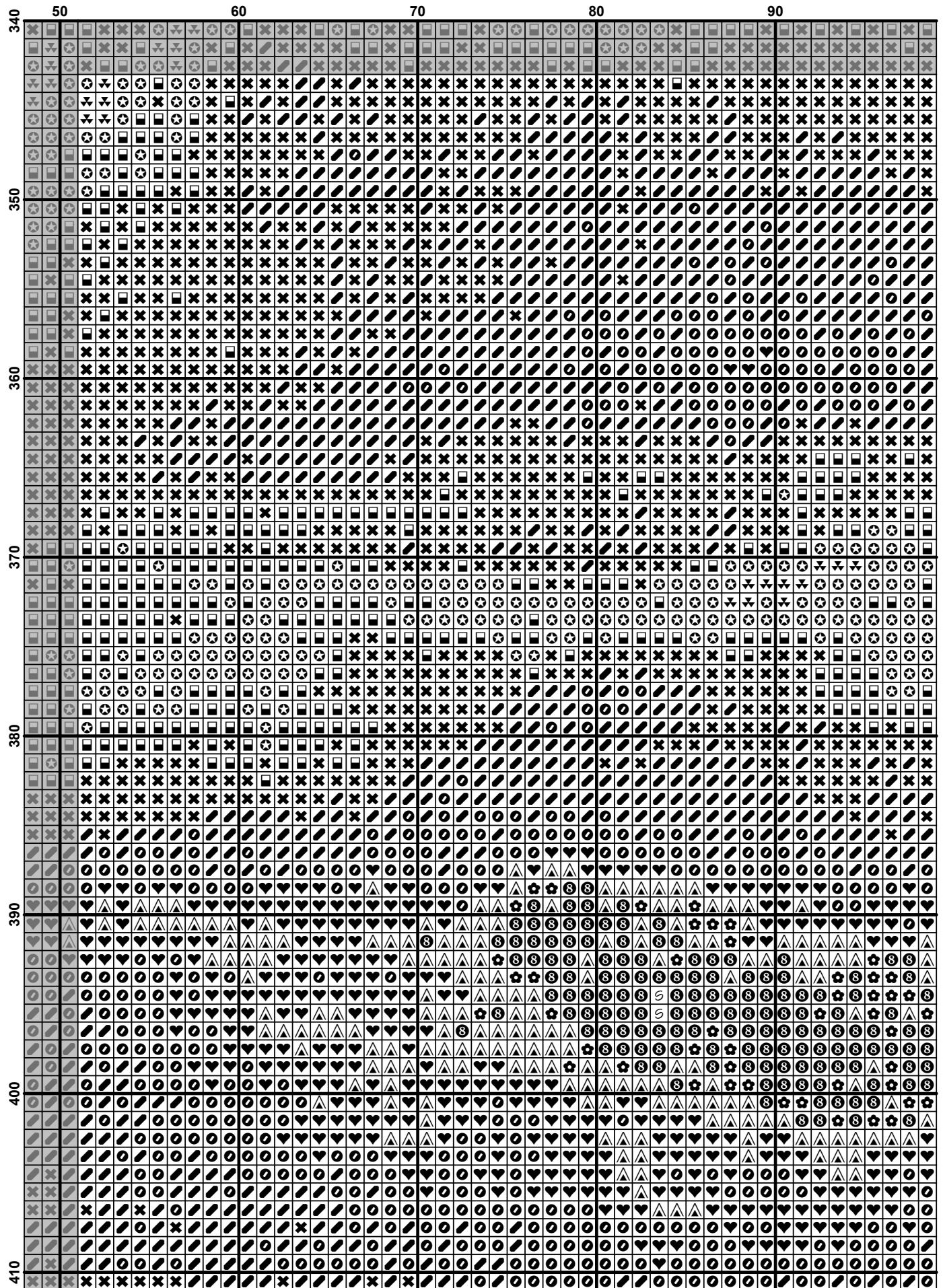


	200	210	220	230	240
280
290
300
310
320
330
340

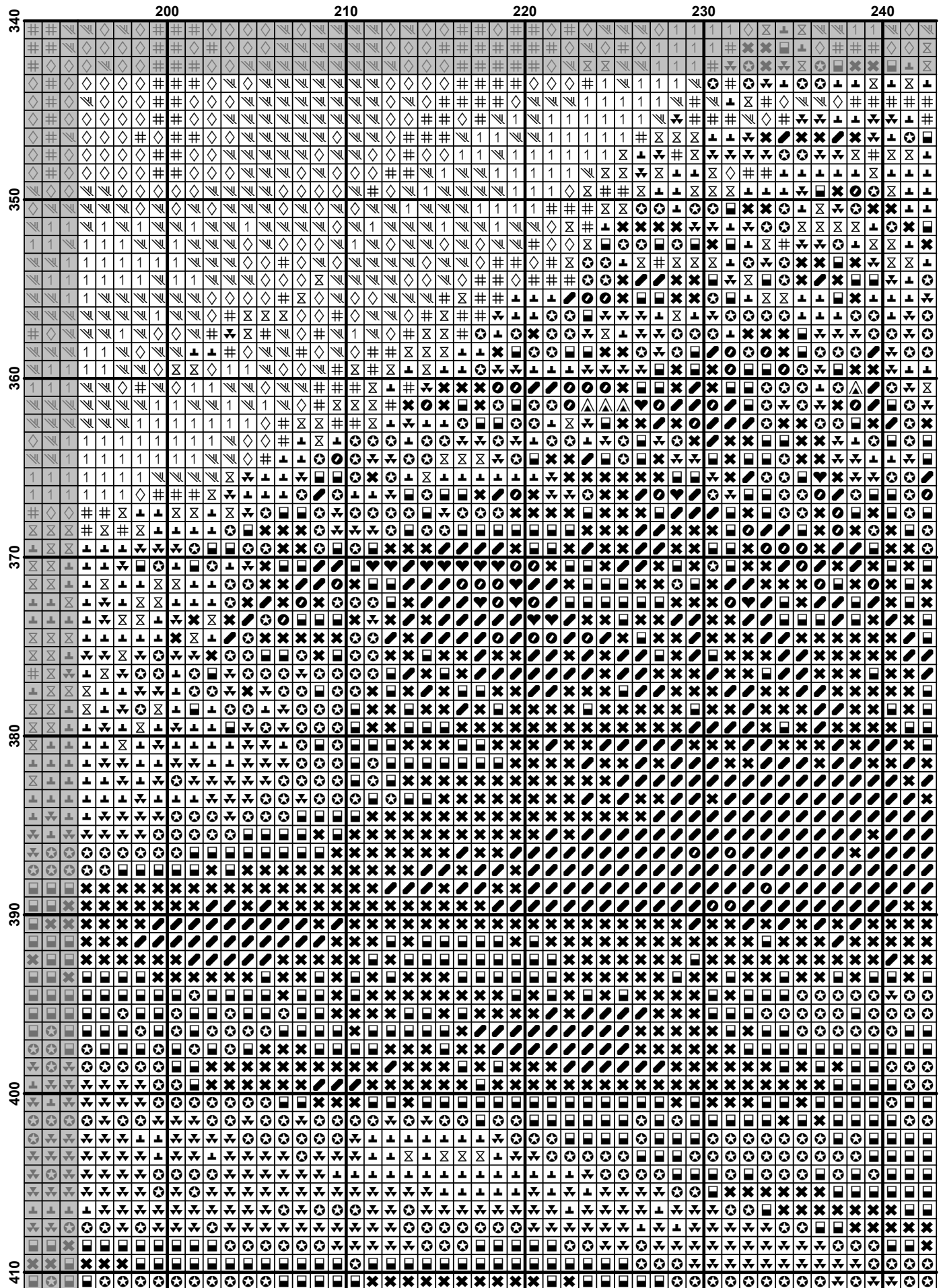
	240	250	260	270	280	290
280
290
300
310
320
330
340

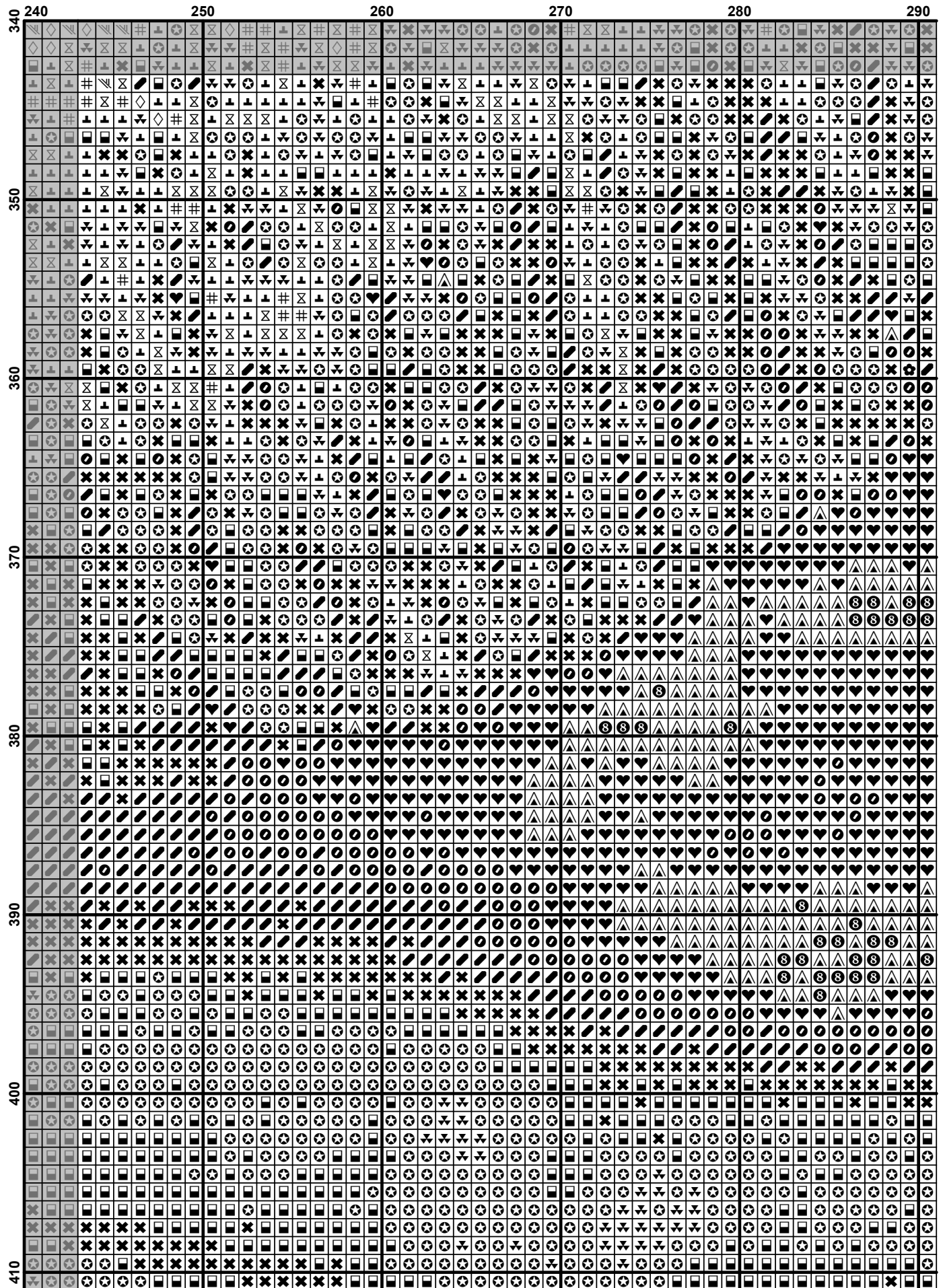


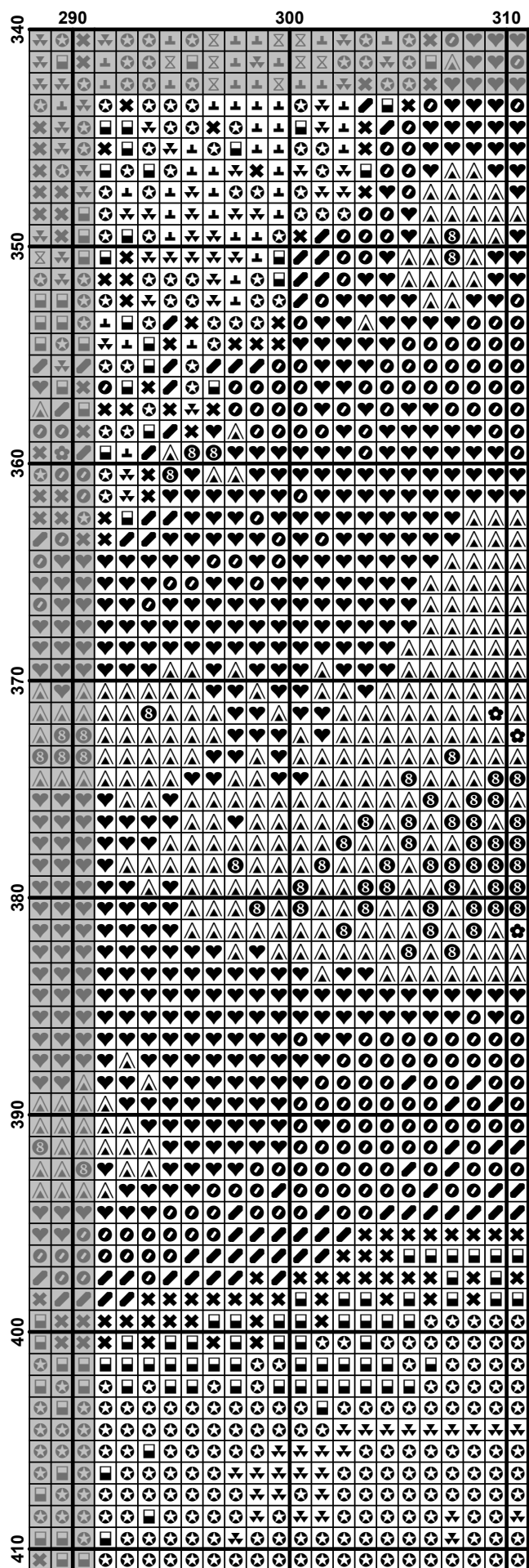




	100	110	120	130	140
340
350
360
370
380
390
400
410

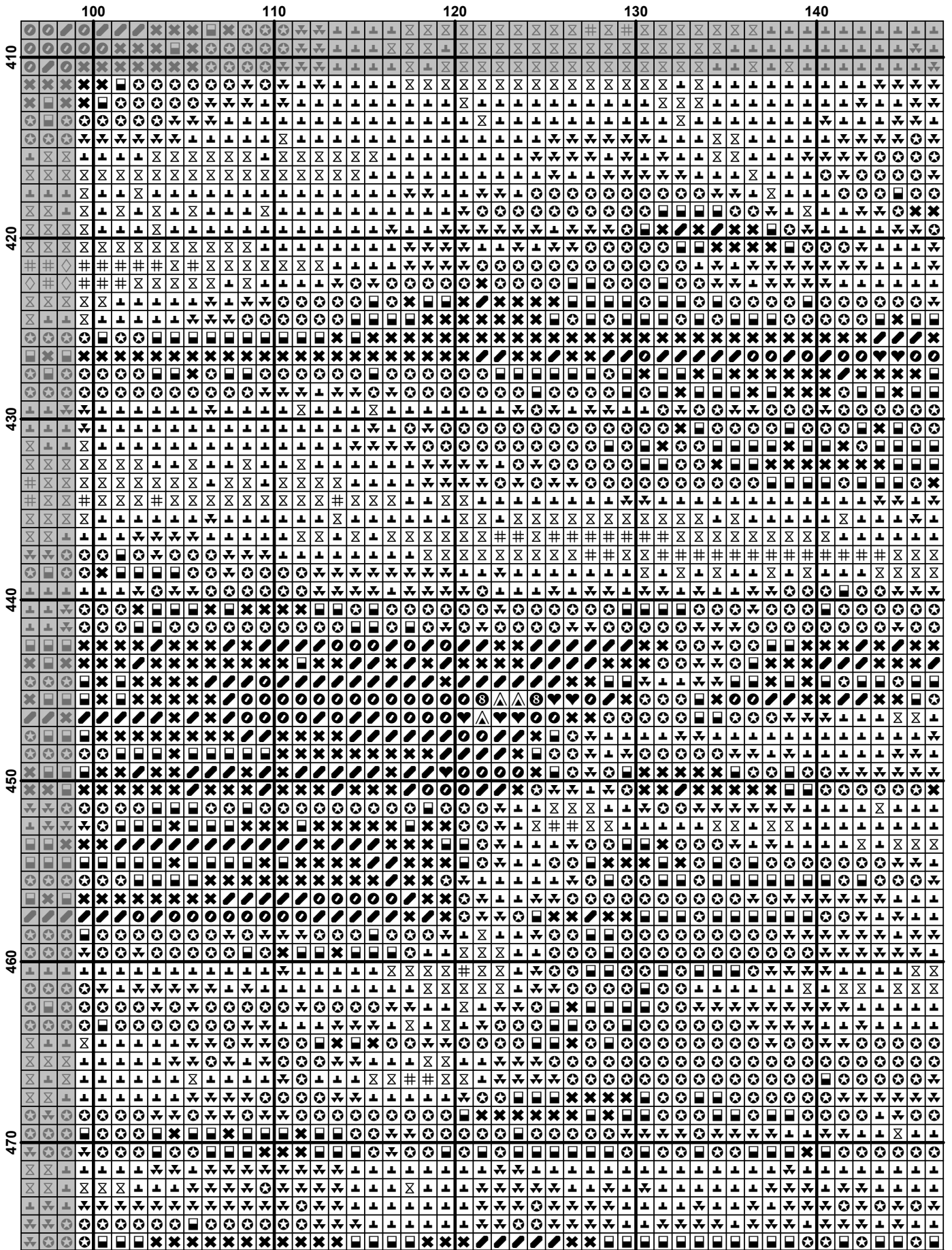


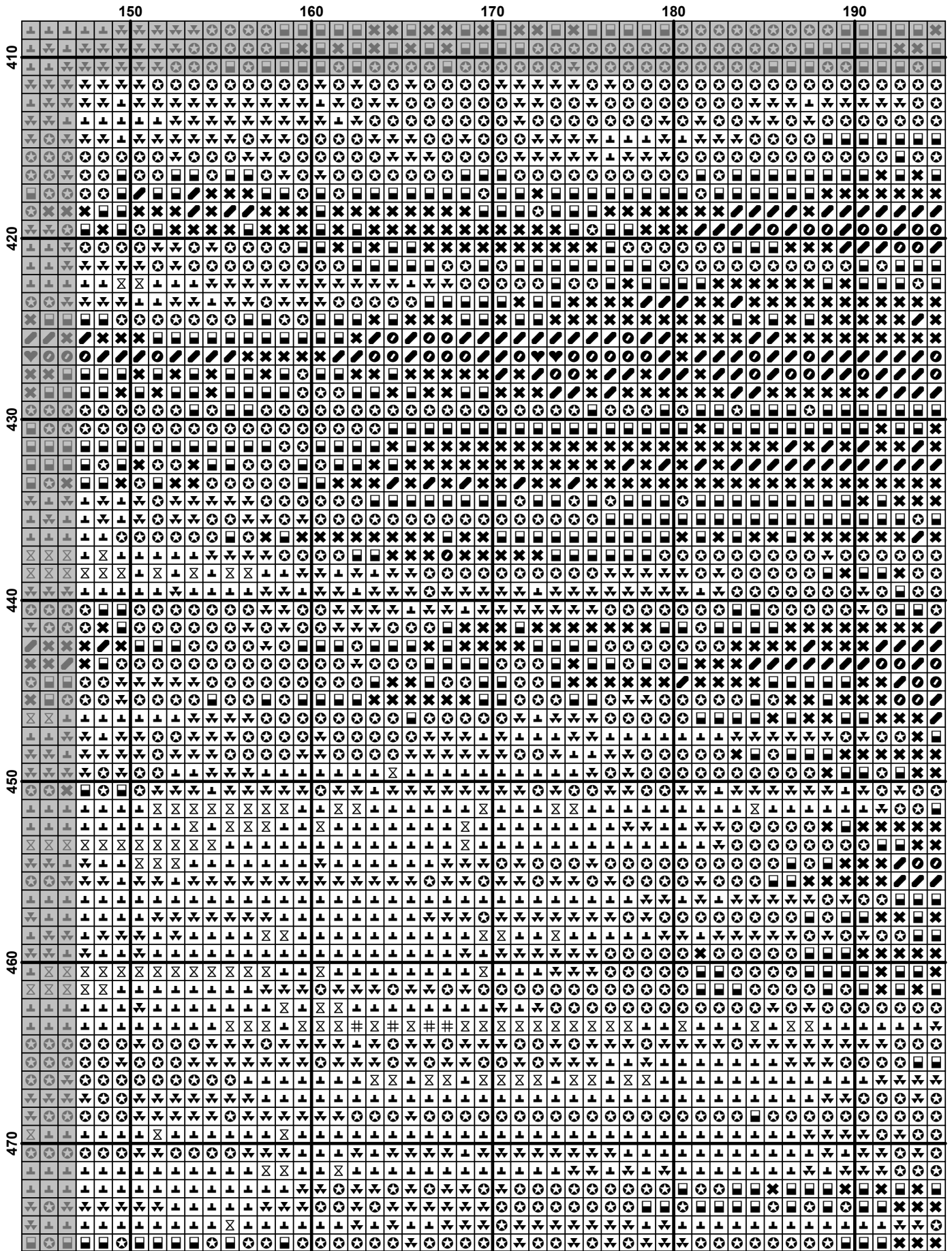


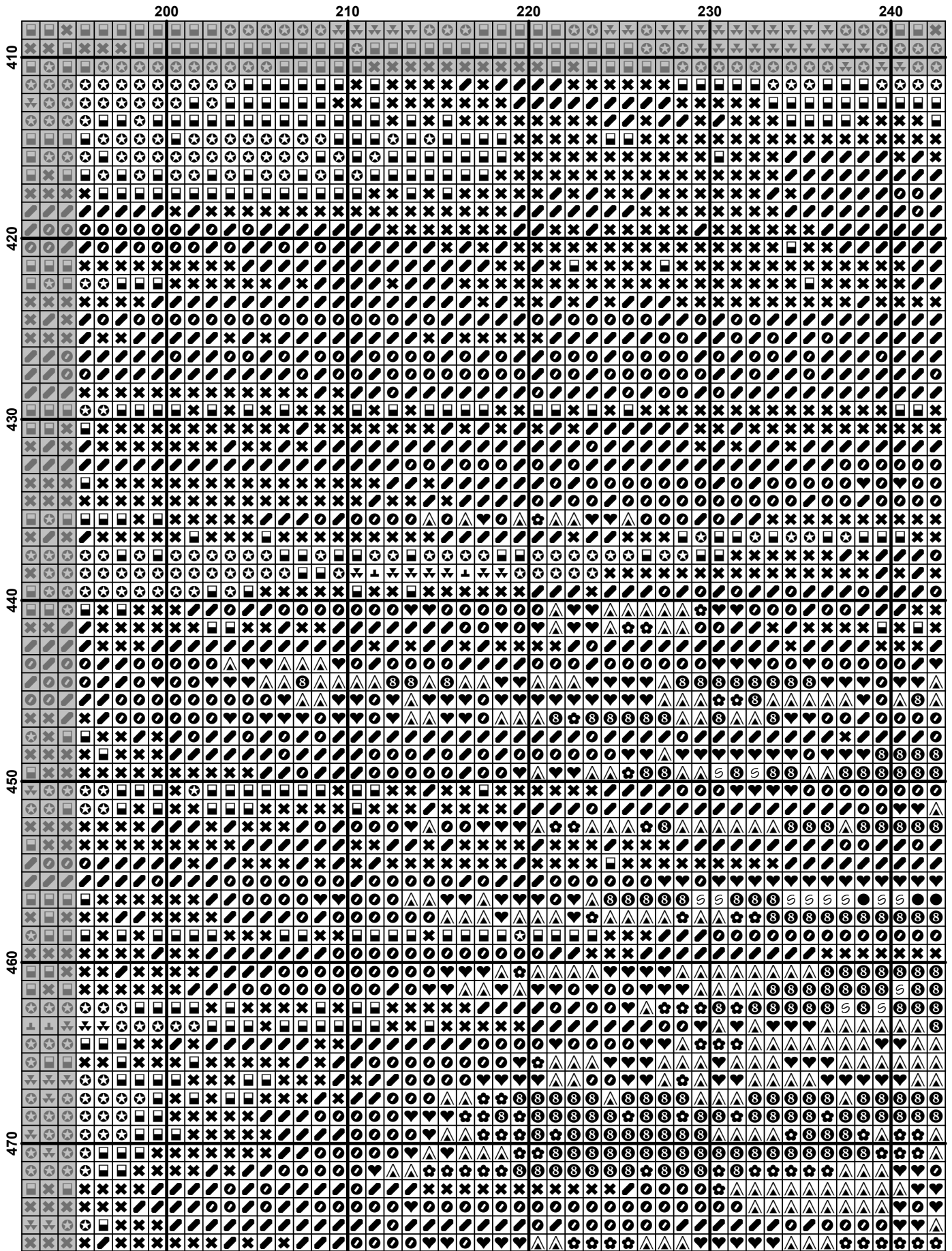


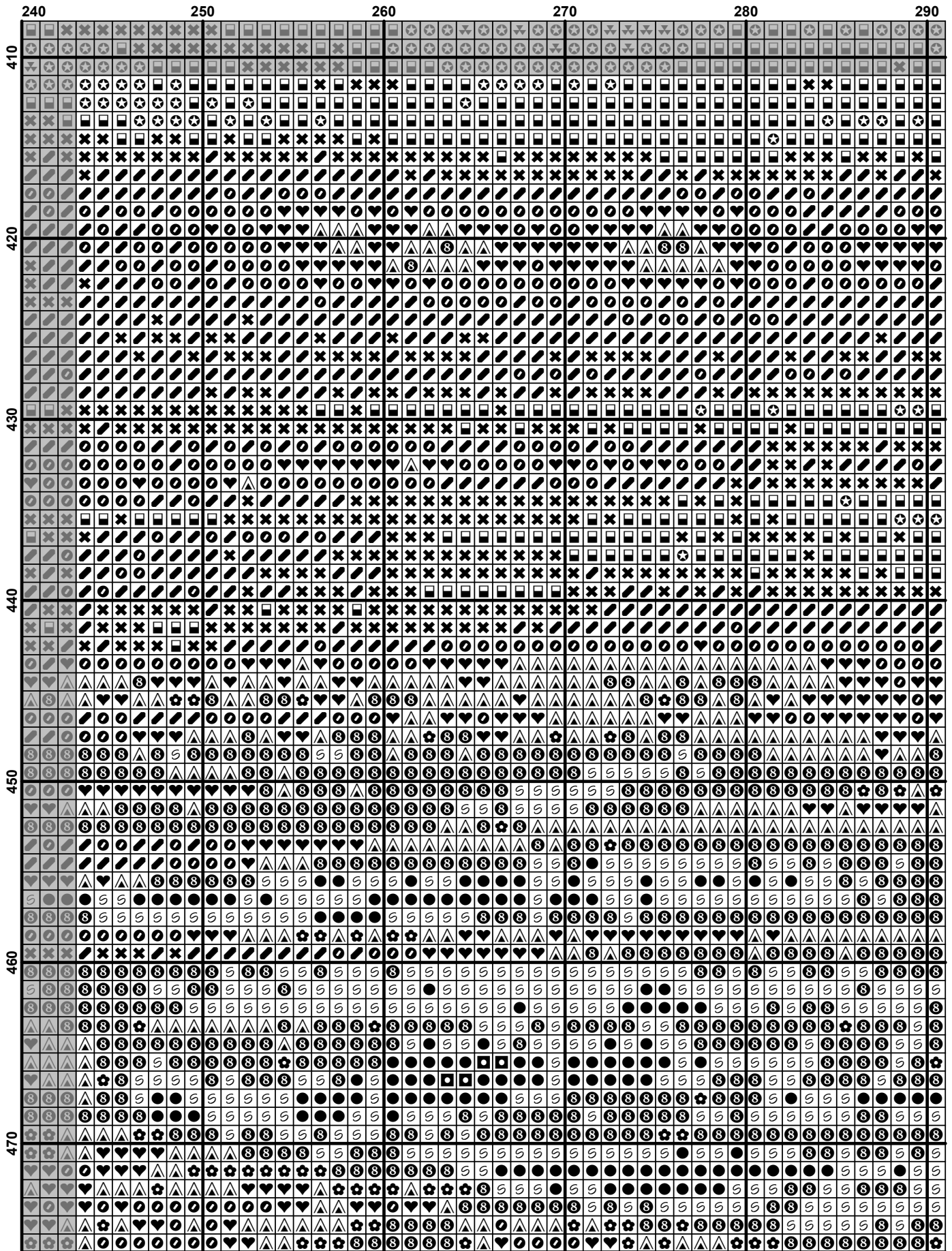
	10	20	30	40	50
410
420
430
440
450
460
470

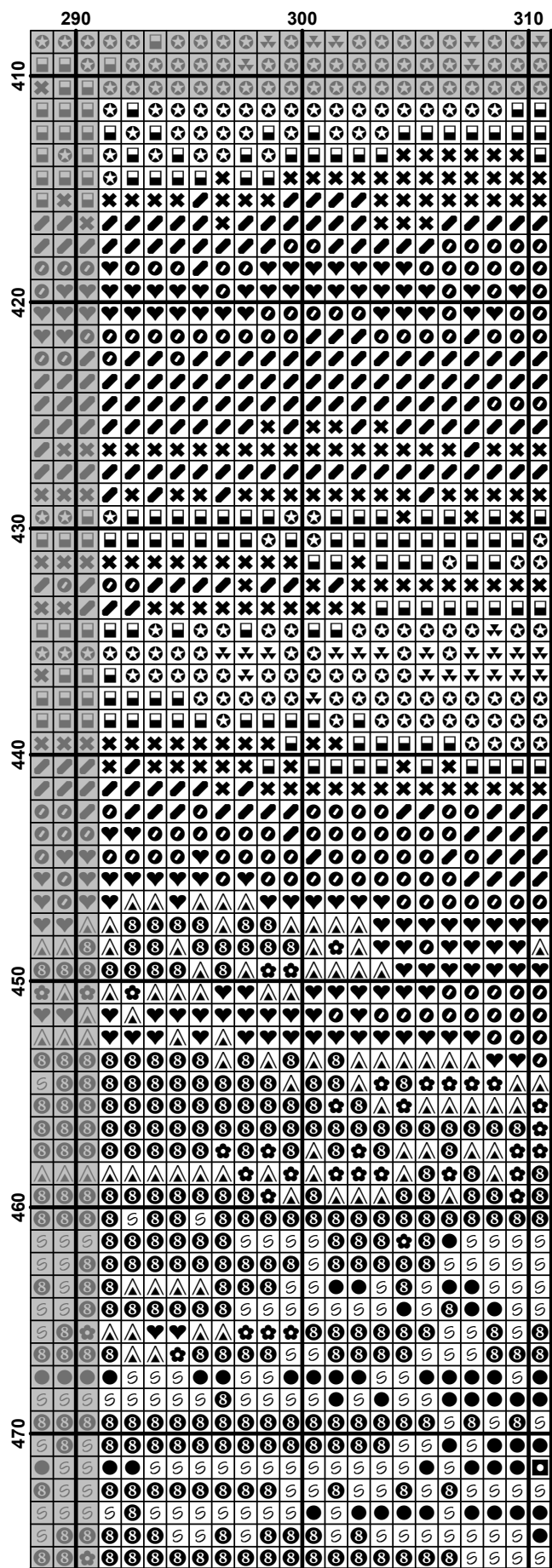
	50	60	70	80	90
410	▧	▧	▧	▧	▧
420	▧	▧	▧	▧	▧
430	▧	▧	▧	▧	▧
440	▧	▧	▧	▧	▧
450	▧	▧	▧	▧	▧
460	▧	▧	▧	▧	▧
470	▧	▧	▧	▧	▧











Pattern Name: "Лада"
Designed By: Ожиганов Игорь
Company: ХИМЕРА
Fabric: Aida 18, White
 311w X 476h Stitches
Size(s): 18 Count, 43.89w X 67.17h cm
 16 Count, 49.37w X 75.56h cm
 14 Count, 56.42w X 86.36h cm
 25 Count, 31.60w X 48.36h cm

Floss Used for Full Stitches:

Symbol	Strands	Type	Number	Color
	2	DMC	310	Black
	2	DMC	355	Terra Cotta-DK
	2	DMC	356	Terra Cotta-MD
	2	DMC	433	Brown-MD
	2	DMC	434	Brown-LT
	2	DMC	435	Brown-VY LT
	2	DMC	436	Tan
	2	DMC	712	Cream
	2	DMC	738	Tan-VY LT
	2	DMC	739	Tan-UL VY LT
	2	DMC	801	Coffee Brown-DK
	2	DMC	814	Garnet-DK
	2	DMC	815	Garnet-MD
	2	DMC	817	Coral Red-VY DK
	2	DMC	938	Coffee Brown-UL DK
	2	DMC	3371	Black Brown
	2	DMC	3777	Terra Cotta-VY DK
	2	DMC	3830	Terra Cotta-MD
	1	DMC	435	Brown-VY LT
	1	DMC	434	Brown-LT
	1	DMC	801	Coffee Brown-DK
	1	DMC	938	Coffee Brown-UL DK
	1	DMC	712	Cream
	1	DMC	739	Tan-UL VY LT
	1	DMC	738	Tan-VY LT
	1	DMC	436	Tan
	1	DMC	436	Tan
	1	DMC	435	Brown-VY LT
	1	DMC	434	Brown-LT
	1	DMC	801	Coffee Brown-DK
	1	DMC	433	Brown-MD
	1	DMC	801	Coffee Brown-DK
	1	DMC	738	Tan-VY LT
	1	DMC	739	Tan-UL VY LT
	1	DMC	938	Coffee Brown-UL DK
	1	DMC	3371	Black Brown
	1	DMC	815	Garnet-MD
	1	DMC	817	Coral Red-VY DK
	1	DMC	355	Terra Cotta-DK
	1	DMC	817	Coral Red-VY DK

Расход нитей

Нитей в мотке: 6

Длина мотка: 795.0 cm

Type	Number	Full	Half	Quarter	Petite	Back(cm)	Str(cm)	Spec(cm)	French	Bead	Skein Est.
DMC	310	326	0	0	0	0.0	0.0	0.0	0	0	1.000
DMC	355	404	0	0	0	0.0	0.0	0.0	0	0	1.000
DMC	356	1147	0	0	0	0.0	0.0	0.0	0	0	1.000
DMC	433	3132	0	0	0	0.0	0.0	0.0	0	0	2.000
DMC	434	9065	0	0	0	0.0	0.0	0.0	0	0	3.000
DMC	435	7994	0	0	0	0.0	0.0	0.0	0	0	3.000
DMC	436	11948	0	0	0	0.0	0.0	0.0	0	0	4.000
DMC	712	8033	0	0	0	0.0	0.0	0.0	0	0	3.000
DMC	738	15362	0	0	0	0.0	0.0	0.0	0	0	5.000
DMC	739	7393	0	0	0	0.0	0.0	0.0	0	0	3.000
DMC	801	1174	0	0	0	0.0	0.0	0.0	0	0	1.000
DMC	814	904	0	0	0	0.0	0.0	0.0	0	0	1.000
DMC	815	349	0	0	0	0.0	0.0	0.0	0	0	1.000
DMC	817	7	0	0	0	0.0	0.0	0.0	0	0	1.000
DMC	938	1854	0	0	0	0.0	0.0	0.0	0	0	1.000
DMC	3371	406	0	0	0	0.0	0.0	0.0	0	0	1.000
DMC	3777	253	0	0	0	0.0	0.0	0.0	0	0	1.000
DMC	3830	416	0	0	0	0.0	0.0	0.0	0	0	1.000
DMC	435	13432	0	0	0	0.0	0.0	0.0	0	0	5.000
DMC	434										
DMC	801	3658	0	0	0	0.0	0.0	0.0	0	0	2.000
DMC	938										
DMC	712	7323	0	0	0	0.0	0.0	0.0	0	0	3.000
DMC	739										
DMC	738	18060	0	0	0	0.0	0.0	0.0	0	0	6.000
DMC	436										
DMC	436	11987	0	0	0	0.0	0.0	0.0	0	0	4.000
DMC	435										
DMC	434	6594	0	0	0	0.0	0.0	0.0	0	0	3.000
DMC	801										
DMC	433	2700	0	0	0	0.0	0.0	0.0	0	0	1.000
DMC	801										
DMC	738	12371	0	0	0	0.0	0.0	0.0	0	0	4.000
DMC	739										
DMC	938	1162	0	0	0	0.0	0.0	0.0	0	0	1.000
DMC	3371										
DMC	815	434	0	0	0	0.0	0.0	0.0	0	0	1.000
DMC	817										
DMC	355	148	0	0	0	0.0	0.0	0.0	0	0	1.000
DMC	817										