

X  
X  
X  
X  
X  
X  
X  
X  
X  
X  
X  
X  
X  
X  
X

# Revennial



FUSIONS  by AGF

FREE PATTERN

XXXXXXXXXXXXXXXXXXXXXXXXXXXX



# Perennial



## PRINTEMPS FUSION

FABRICS DESIGNED BY AGF STUDIO



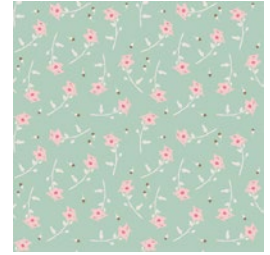
FUS-P-1200  
PAINTED DESERT PRINTEMPS



FUS-P-1201  
SCATTER PRINTEMPS



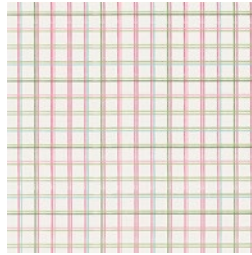
FUS-P-1202  
LUMINOUS FIELD PRINTEMPS



FUS-P-1203  
FRESHLY PICKED PRINTEMPS



FUS-P-1204  
FIETSEN PRINTEMPS



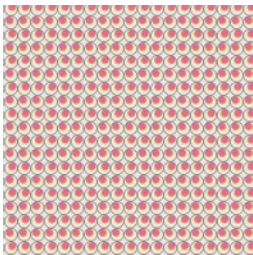
FUS-P-1205  
PLAID BEAT PRINTEMPS



FUS-P-1206  
LIBRARY GARDENS PRINTEMPS



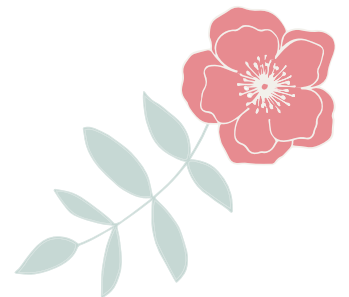
FUS-P-1207  
PERENNIAL PRINTEMPS



FUS-P-1208  
ROUNDED SEEDS PRINTEMPS



FUS-P-1209  
MAGNOLIA PRINTEMPS



# Perennial

FINISHED SIZE | 14<sup>3/4</sup>" x 13<sup>1/2</sup>" x 5<sup>1/2</sup>"

## FABRIC REQUIREMENTS

- Fabric **A** FUS-P-1207 1/2 yd.
- Fabric **B** FUS-P-1208 1/6 yd.
- Fabric **C** PE-450 1/8 yd.

### LINING FABRIC

FUS-P-1207 (Recommended) 3/4 yds.

### Additional Material

- Faux Leather

## CUTTING DIRECTIONS

1/4" seam allowances are included.  
WOF means width of fabric.

- Two (2) Top Bag Template from Fabric **A**
- Two (2) 10" x 6" rectangle from Fabric **A**
- Two (2) Bottom Bag Template from Fabric **B**
- One (1) 20 1/2" x 6" rectangle from Fabric **B**
- Four (4) 15" x 3/4" strip from Fabric **C**
- Four (4) 6" x 3/4" strip from Fabric **C**

## CONSTRUCTION

Sew all rights sides together with 1/4" seam allowance.

- Pair Top with Bottom for front and back

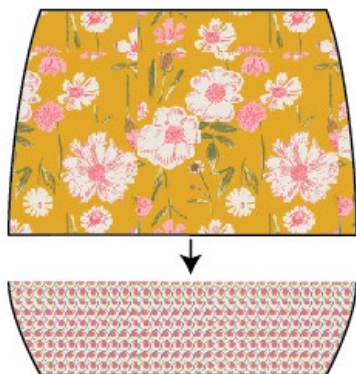


DIAGRAM 1

- Place Fabric **C** strip 2" from the top down, place the second strip 3/4" distance from the first strip.

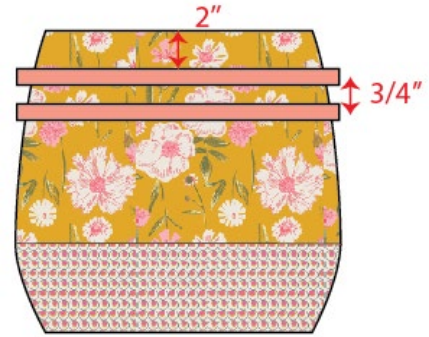


DIAGRAM 2

- Trim the strips



DIAGRAM 3

- For your side panel, pair Fabric **A** 10" x 6" rectangle with Fabric **B** 20 1/2" x 6" rectangle.
- Pair another 10" x 6" rectangle from Fabric **A** next to fabric **B** piece



DIAGRAM 4

- Now, place Fabric **C** strip 2" from the top down, place the second strip 3/4" distance from the first strip.
- Repeat the same process for the other side of the piece

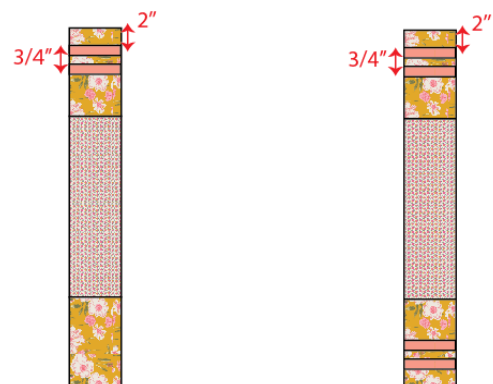


DIAGRAM 5

## BAG ASSEMBLY

*Sew rights sides together.*

- Place bag body (exterior) inside lining, right sides together. Align side seams, Pin lining to exterior.
- Stitch lining to exterior all the way around top of pack opening.
- Make sure to keep side seams aligned and seam allowances open as they are stitched.
- Press seam allowances open all the way around the top of the pack.
- leave a 3" in hole in one of the sides of the lining. Flip you bag inside out.
- Turn backpack right side out through the hole and top stitch or hand stitch to assure a clean finish.
- Place the lining back inside the exterior, and press the lining/exterior attachment around the cab from the right side.
- Measure from the top down 1" and from the edge left in, 3" and make a button hole.
- From that button hole, measure 5" to the right and create another button hole.
- Repeat the same process for the other side of the bag
- For the sides, measure from the top down 1" and from the edge left in, ½" and make a button hole.
- Repeat the same for the other side.
- Now, take your strap and insert it through all the button holes.
- Make two knots on the sides and pull the straps from the middle in order to have your handle
- You are finally done! Enjoy your new stylish bag!



- Now, start pinning your side panel with the main bag piece right sides facing.
- Make sure they match perfectly with the main bag prints.



DIAGRAM 6

- Once you sew all the piece, take the other main bag piece and pair it with the previous piece, right sides facing.

## LINING & DROP IN POCKET

*Sew rights sides together.*

- Use the two template 1 pieces from fabric A and fabric B 9 ½' x 5 ½' rectangle.

### Drop in pocket:

- Take the 9½" x 5½" Fabric B piece and place it on top of one piece of your lining fabric.
- Take the edges of Fabric B and fold them in and stitch right on the edge leaving the top part unsewn
- Stitch on the middle or more to your right or left in order to create your drop-in pockets.
- If you want, create a contrasting color binding detail on the top part of your pocket.
- If you desire, create a quilting motif on the pocket.
- Refer to the diagram below to see how the inside should look.

### Creating the handles

- Take 2 long strips of faux fabric wrong sides facing and top stitch at about ¼ all around the edge .
- Stitch handles ½' facing the right side of the bag.





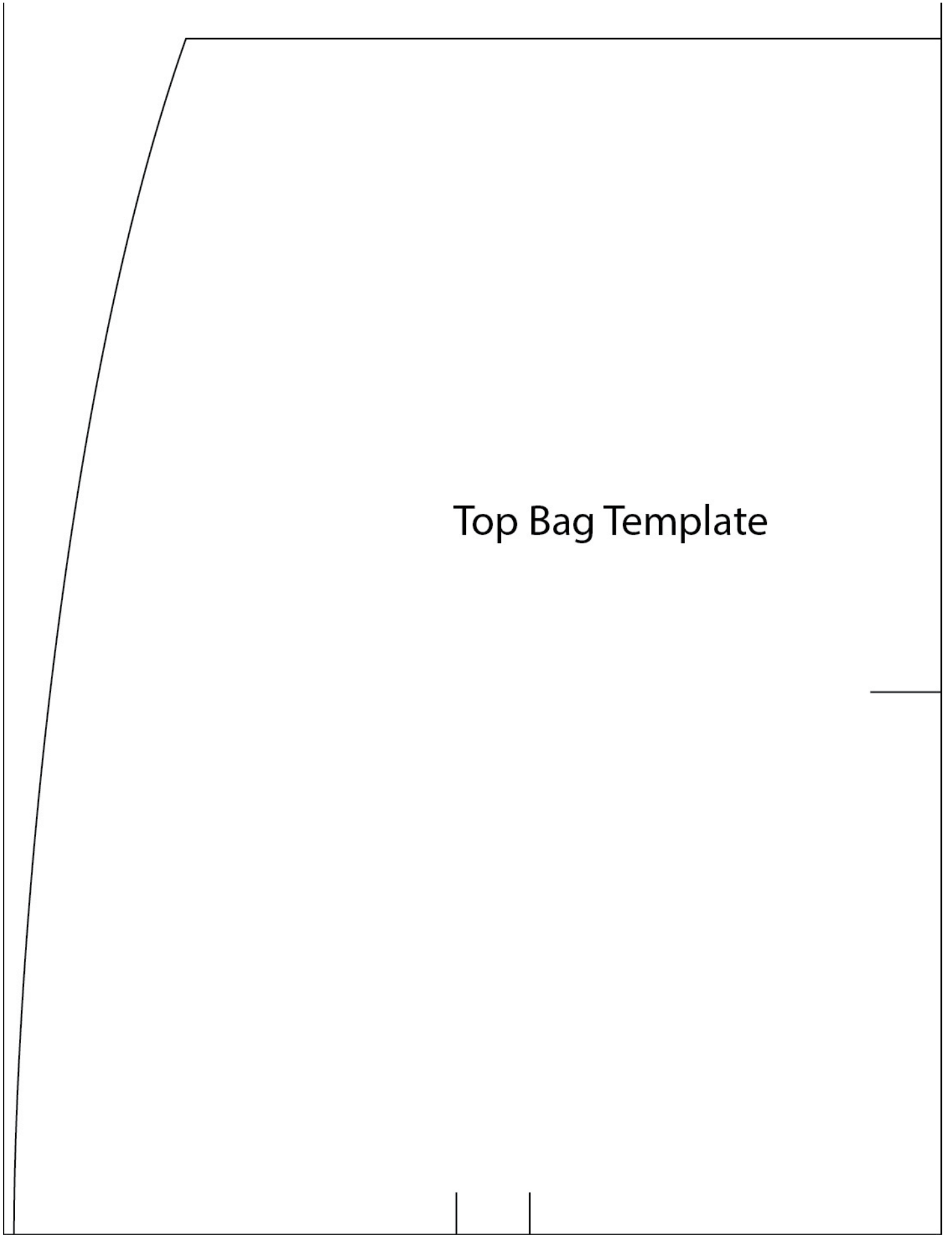
FEEL THE DIFFERENCE

[artgalleryfabrics.com](http://artgalleryfabrics.com)

NOTE: While all possible care has been taken to ensure the accuracy of this pattern, We are not responsible for printing errors or the way in which individual work varies.

Please read instructions carefully before starting the construction of this quilt. If desired, wash and iron your fabrics before starting to cut.

© 2018 Courtesy of Art Gallery Quilts LLC. All Rights Reserved.



# Top Bag Template

# Top Bag Template

