

Wonky Zoo Pens

Zany Zoo Fabric Collection from Fabri-Quilt
Quilt Designed by Tresa McConachie of Quilts By Nature



40" x 54"



901 E. 14th Avenue
North Kansas City, MO 64116
(816) 421-2000
www.fabri-quilt.com

Quilt designed by Tresa McConachie of Quilts By Nature

Finished Quilt Size: Approximately 40" x 54"

Yardages & Cutting

WOF is width of fabric from selvage edge to selvage. Make an extra copy of each of the block patterns and cut apart on the lines to make individual piece patterns. Use these patterns to precut fabric shapes, placing the unprinted side of the pattern against the wrong side of the fabric. Cut each piece at least 1/2" larger on all sides to allow for easier positioning when piecing.

1 yard animal print, 112-27871

- 2 strips 4 1/2" x WOF for top/bottom borders
- 3 strips 4 1/2" x remaining length of fabric from the same print section for 1 side border
- 3 strips 4 1/2" x remaining length of fabric from the same print section for 1 side border

1/2 yard bird print, 112-27881

- Block piecing

1/2 yard elephant print, 112-27891

- Block piecing

1/2 yard giraffe print, 112-27921

- Block piecing

1/2 yard monkey print, 112-27901

- Block piecing

1/2 yard zebra print, 112-27911

- Block piecing

1 1/2 yards white solid, 160-9800

- 6 strips 1 1/2" x WOF; cut into (2) 34" lengths, (2) 14" lengths and (12) 9 1/2" lengths for sashing strips
- 1 strip 1 1/2" x WOF for longest sashing strip
- 4 strips 1 1/2" x WOF for first border

5/8 yard black solid, 160-9804

- 4 strips 1" x WOF for second border
- 5 strips 2 1/4" x WOF for binding

3 5/8 yards Backing of Choice

- 2 pieces 62" x WOF for backing

Piecing the Blocks & Setting Triangles

***Note:** Prior knowledge of paper piecing is needed to make this quilt.*

1. Tape the Block A paper-piecing pattern and Block A part 2 pattern together, matching patterns on the dark gray vertical lines and continuing the black lines of the pattern sections and outside edges. The pattern should measure 9 1/2" square on the outside black line. Make 4 copies of the pattern for piecing. Make 1 copy to precut pieces, if desired. (See note at beginning of Yardage & Cutting.)
2. Repeat step 1 to make 4 copies of Block B for piecing (9 1/2" square), 2 copies of Block C for piecing (9 7/8" square), 1 copy of Block D for piecing (9 7/8" square) and 1 copy of Block E for piecing (10 1/4" square). Make 1 extra copy of each pattern to precut pieces, if desired.
3. Complete paper piecing of each block using white solid where marked on patterns and the bird, elephant, giraffe, monkey and zebra prints for the large unmarked areas of the patterns. Stitch pieces to each pattern in numerical order. Trim fabrics and paper even with the outer black lines of the patterns. Do not remove the paper patterns. (See diagrams on next page.)
4. Cut the C blocks and D block in half diagonally to make 6 edge setting triangles. Cut the E block twice diagonally to make 4 corner triangles. (See diagrams on next page.)



Block A
Make 4



Block B
Make 4



Block C
Make 2



Block D
Make 1



Block E
Make 1



Edge Setting Triangles — Cut 6



Corner Triangles — Cut 4

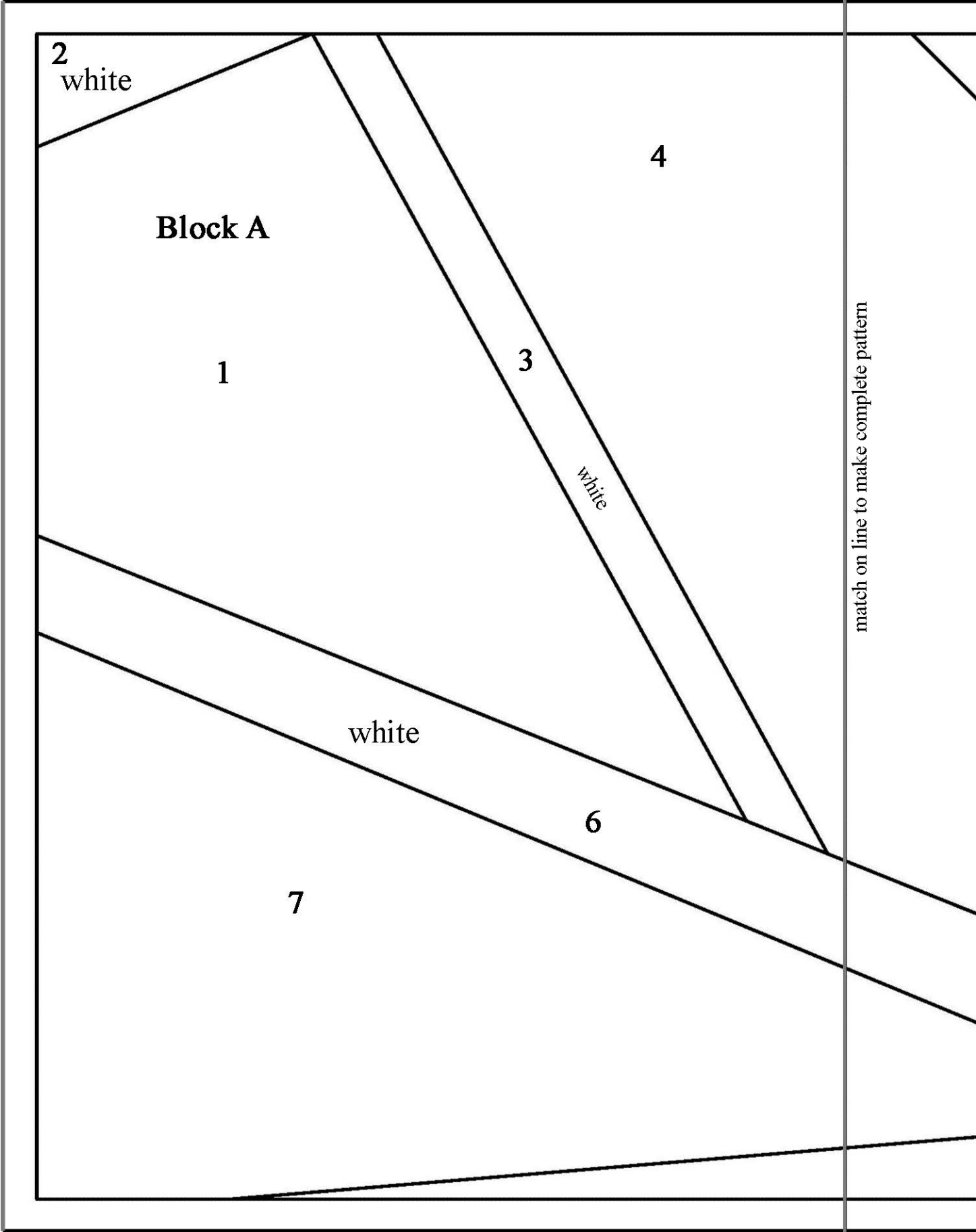
Completing the Quilt

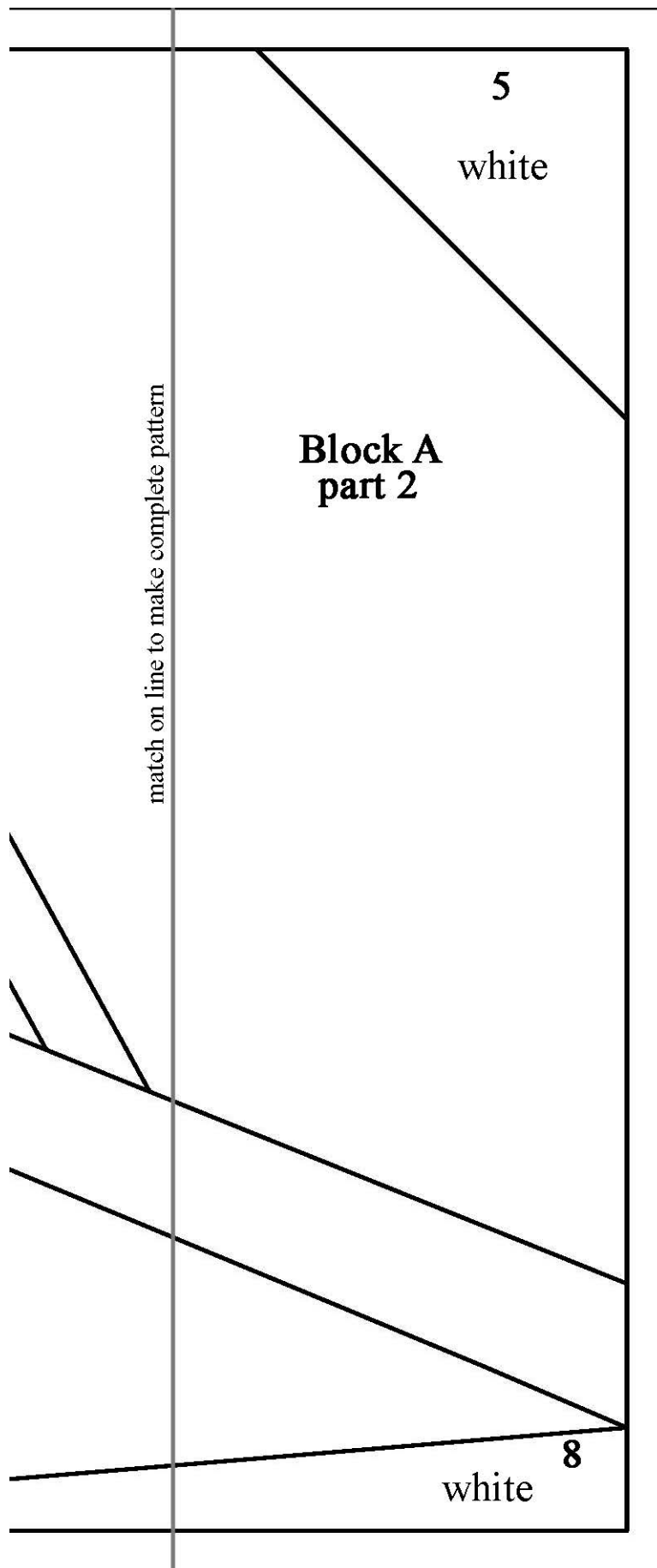
***Note:** Refer to the Exploded Quilt Center Diagram on the next page and the cover quilt drawing as needed throughout the following steps. Use a 1/4" seam allowance for all piecing.*

1. Sew a 1 1/2" x 9 1/2" white sashing strip and then an edge setting triangle to opposite sides of a B block. Press seams toward the sashing strips. Center and sew a 1 1/2" x 14" sashing strip to the short side of the pieced row and a 1 1/2" x 34" strip to the long side. Press seams toward the strips. Add a corner triangle to the short edge of the pieced unit to complete a corner unit. Press seam toward the sashing strip. Repeat to make a second corner unit. (The white sashing strips will extend beyond the edges of the units.)
2. Join 2 A blocks, 1 B block, 1 edge setting triangle and 1 corner triangle with (4) 1 1/2" x 9 1/2" sashing strips. Press seams toward the sashing strips. Repeat to make a second pieced row. Join the 2 rows with the 1 1/2" x WOF white sashing strip. Press seams toward the sashing strip to complete the center section.
3. Center and stitch a corner unit to opposite long sides of the center section. Press seams toward the corner units. Trim the ends of the white sashing strips even with the edges of the edge and corner triangles to complete the 28 3/4" x 43" quilt center.
4. Sew the 1 1/2" x WOF white border strips short ends together to make a long strip. Press seams to 1 side. Cut into (2) 43" strips and (2) 30 3/4" strips. Stitch the longer strips to the long sides of the quilt center and the shorter strips to the top and bottom. Press seams toward the strips.
5. Repeat step 4 with the 1" x WOF black strips, cutting (2) 45" strips and (2) 31 3/4" strips.
6. Trim the 4 1/2" x WOF animal print strips to 31 3/4". Sew the strips to the top and bottom of the quilt center. Press seams toward the strips.
7. Sew (3) 4 1/2" same print section animal print strips short ends together to make a long strip, matching the print at the seams as much as possible. Press seams to 1 side. Trim to 54". Repeat with the 3 remaining animal print strips. Stitch the pieced strips to the long sides of the quilt center to complete the quilt top. Press seams toward the strips.
8. Remove the paper patterns from the blocks and triangles.
9. Remove the selvage edges from the 62" backing pieces. Join the pieces on the long edges with a 1/2" seam allowance. Press seam open. Trim the side edges to make a 48" x 62" backing piece.
10. Layer, quilt, and bind using your favorite methods and the black binding strips to complete the quilt.



Exploded Quilt Center





Block B

7

white

6

1
white

2

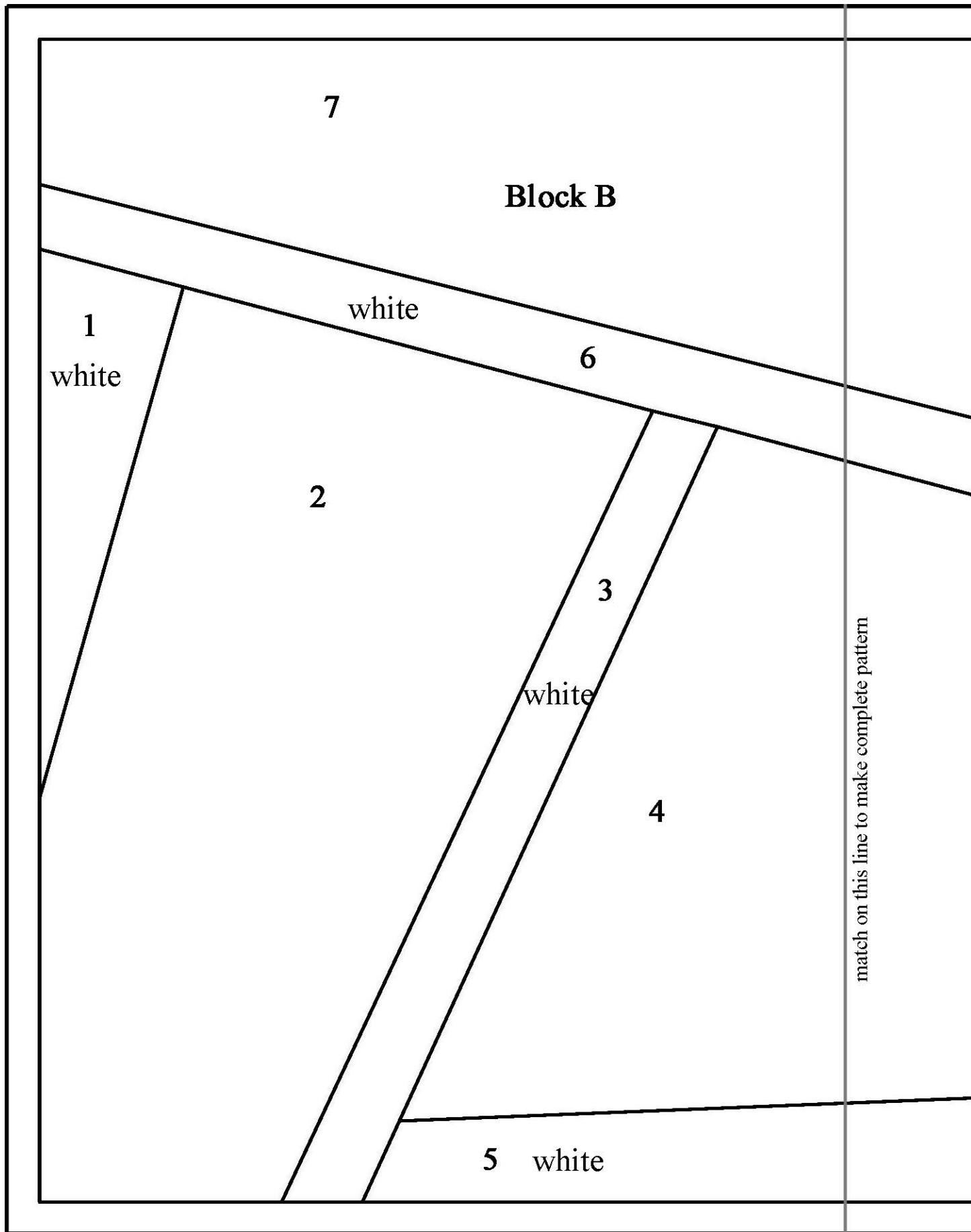
3

white

4

5 white

match on this line to make complete pattern

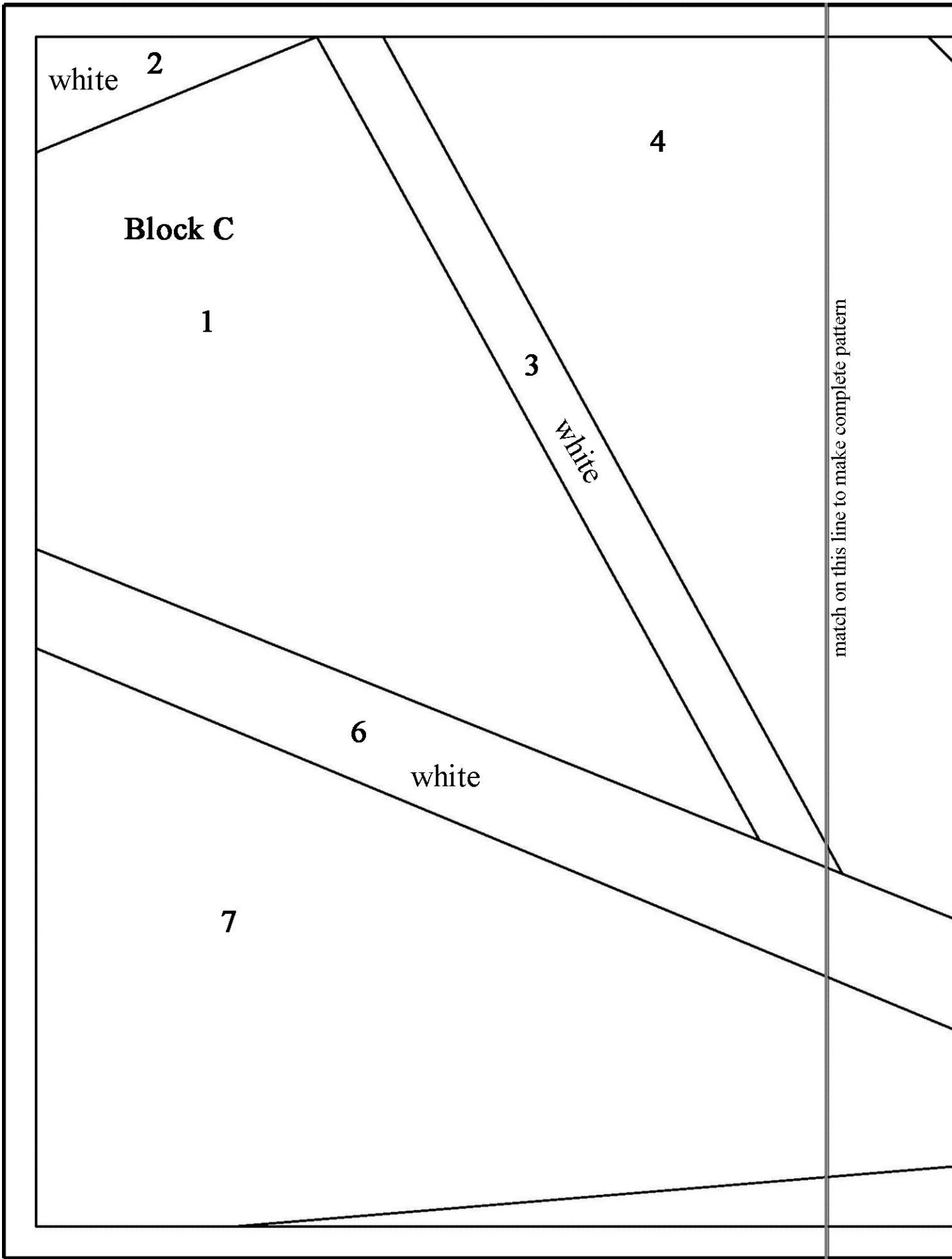


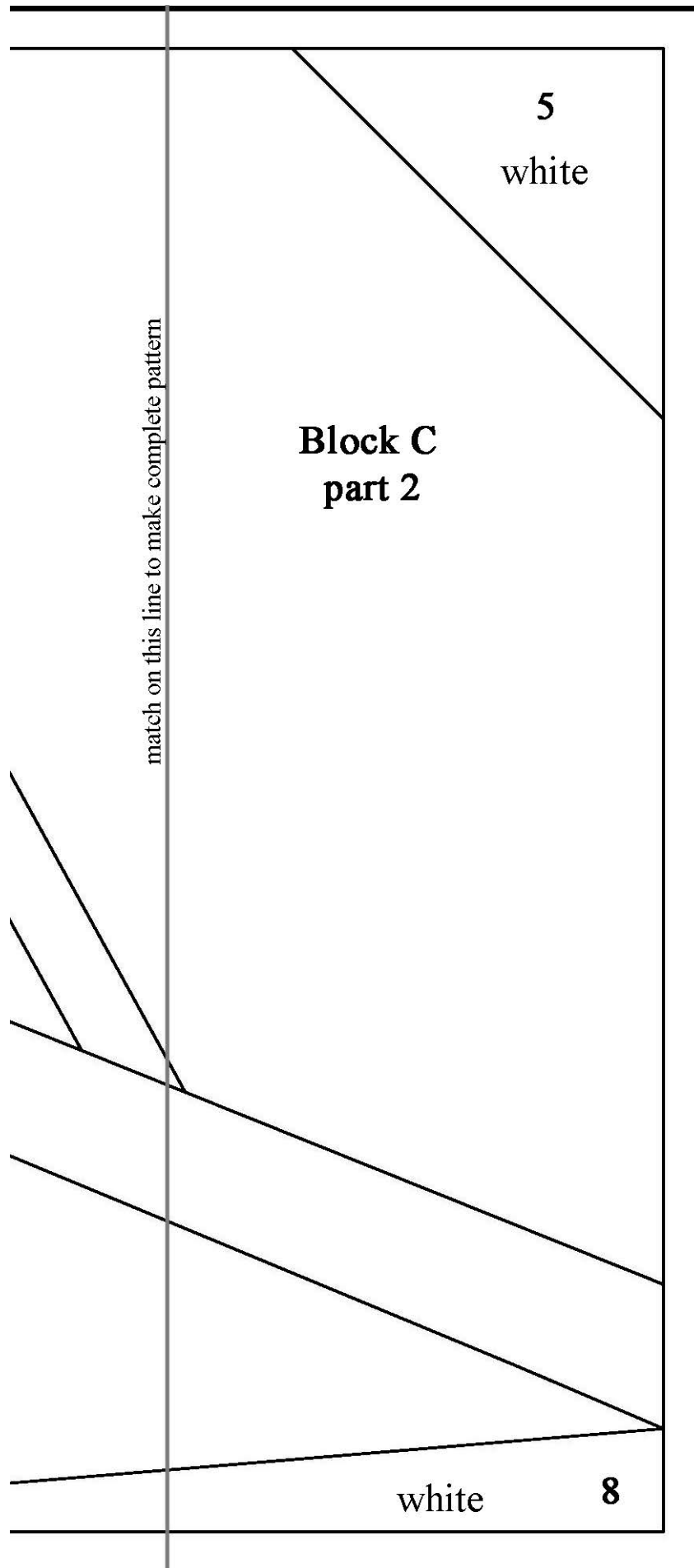
8

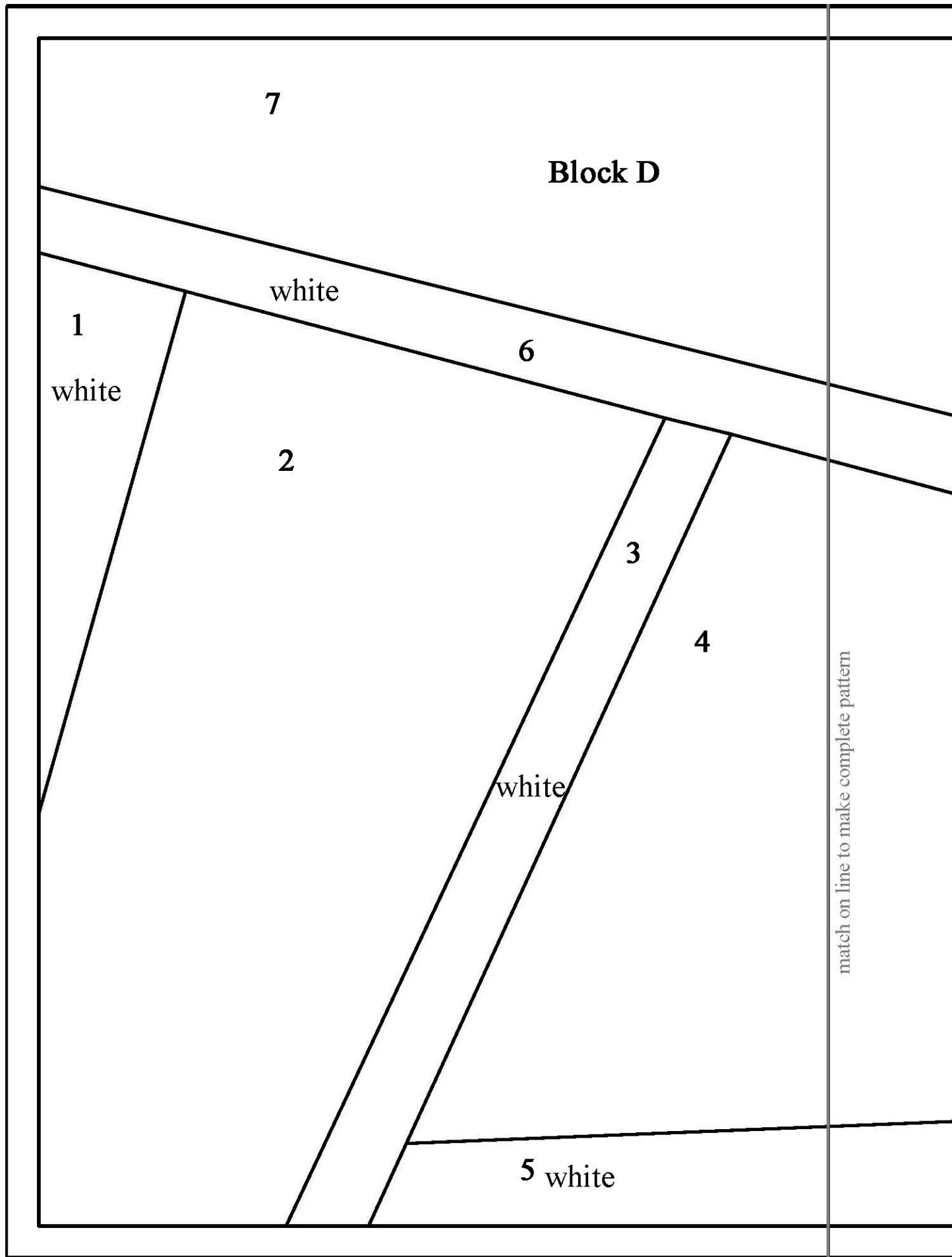
white

Block B
part 2

match on this line to make complete pattern



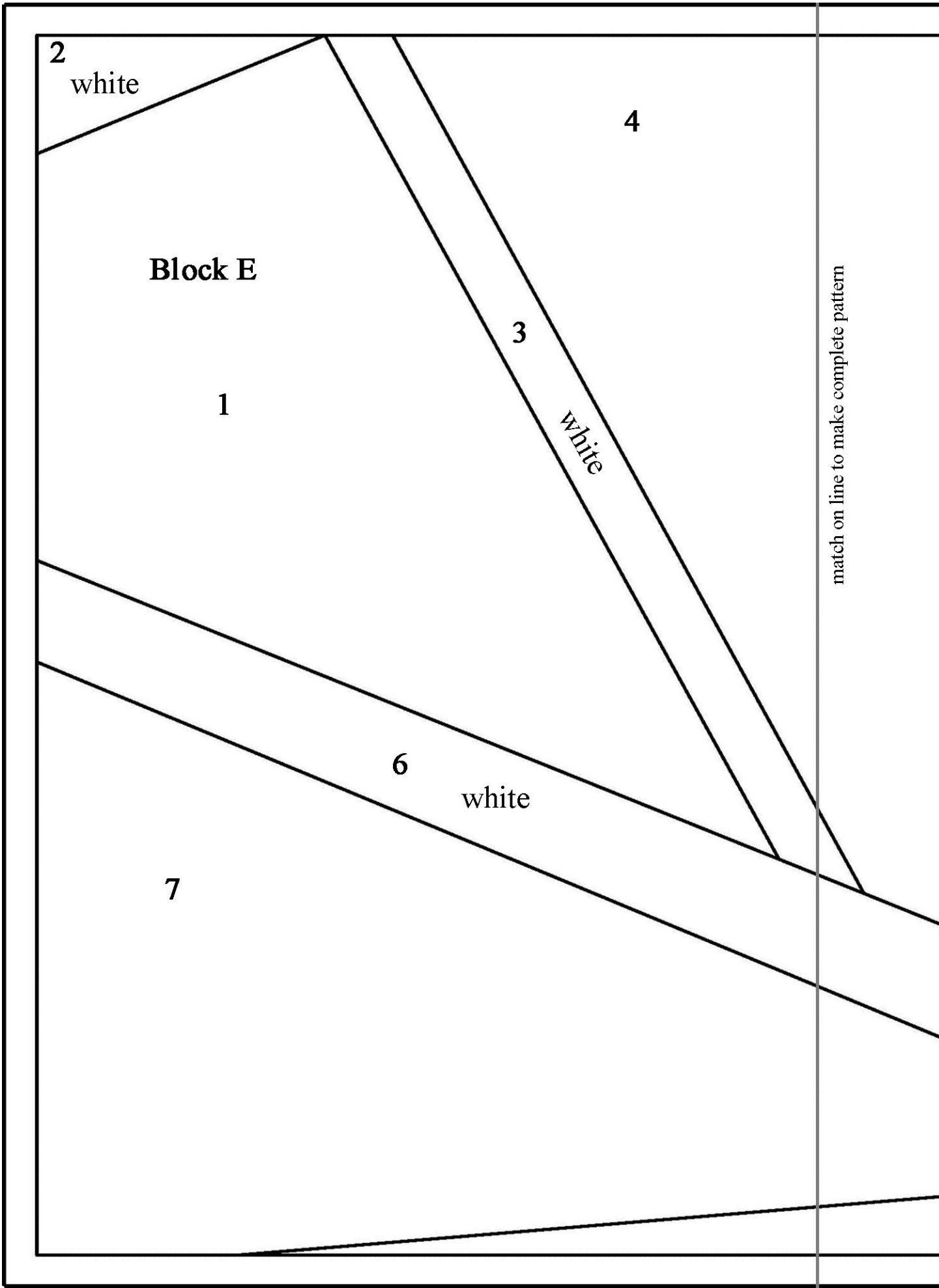


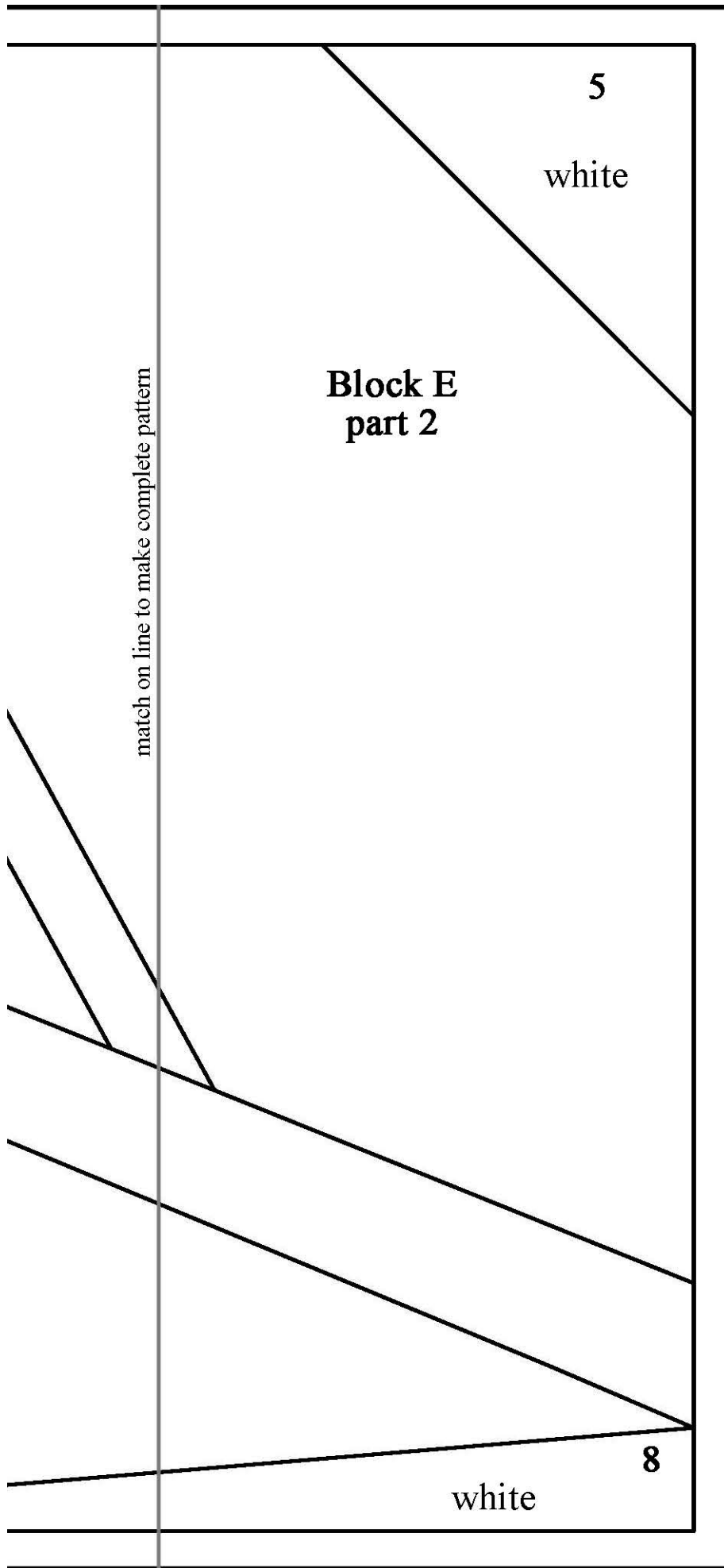


8
white

Block D
part 2

match on line to make complete pattern





Wonky Zoo Pens

1 Kit

5 Kits

10 Kits

Animal Print
112-27871

1 yd

5 yds

10 yds



Bird Print
112-27881

1/2 yd

2 1/2 yds

5 yds



Elephant Print
112-27891

1/2 yd

2 1/2 yds

5 yds



Giraffe Print
112-27921

1/2 yd

2 1/2 yds

5 yds



Monkey Print
112-27901

1/2 yd

2 1/2 yds

5 yds



1 Kit

5 Kits

10 Kits

Zebra Print
112-27911

1/2 yd

2 1/2 yds

5 yds



Black Solid (includes binding)
160-9804

5/8 yd

3 1/8 yds

6 1/4 yds



White Solid
160-9800

1 1/2 yds

7 1/2 yds

15 yds



Backing of Choice

3 5/8 yds

18 1/8 yds

36 1/4 yds



901 E. 14th Avenue
North Kansas City, MO 64116
(816) 421-2000
www.fabri-quilt.com