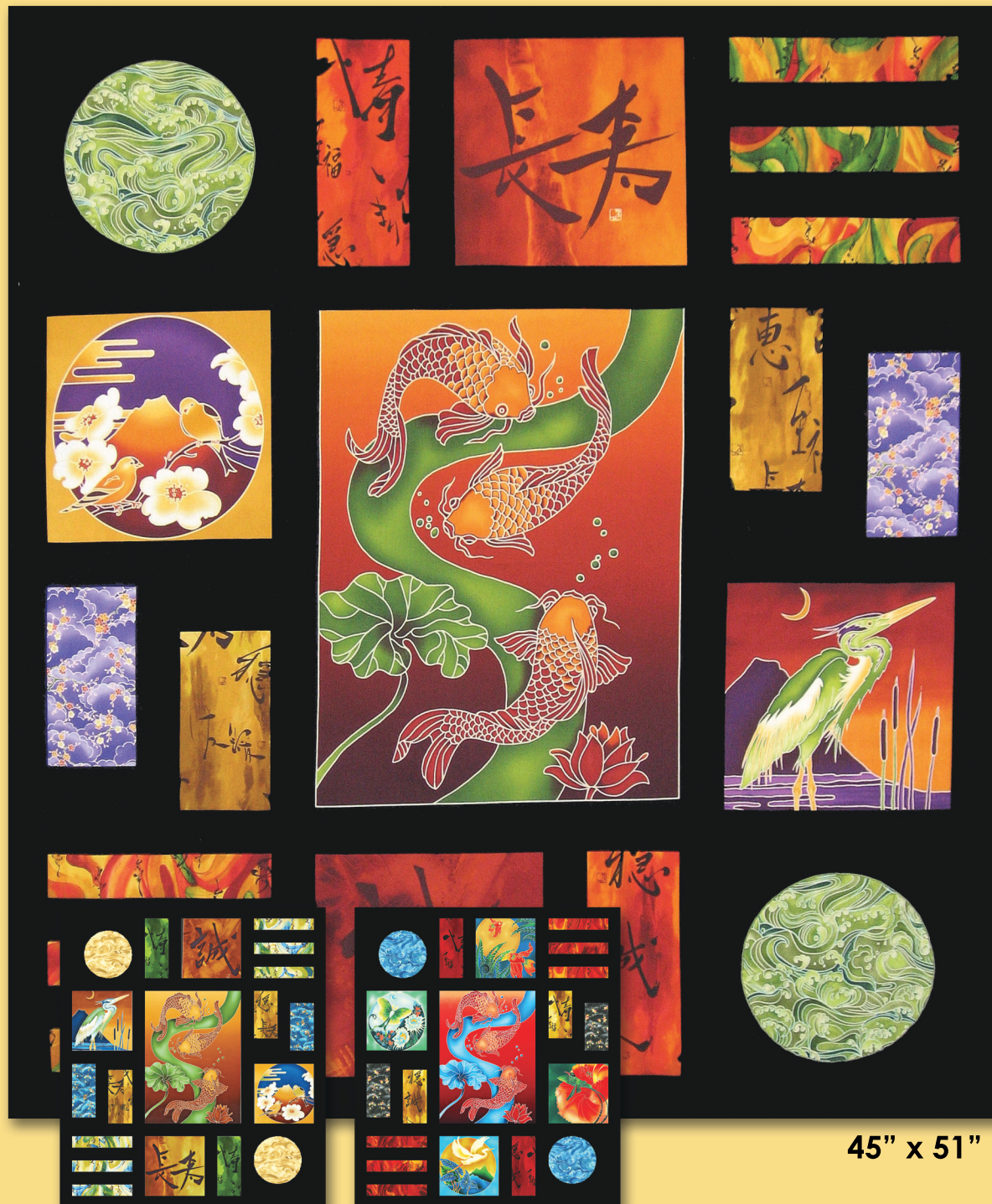




# Twelve Moons

by Sybil Shane

designed by Kari Nichols, Jewel colorstory



45" x 51"

Spring colorstory

Summer Colorstory

**Fat Quarter Friendly!!**  
Make this quilt using only one of the Twelve Moons fat quarter bundles and an additional 1-2/3 yds Ultra Sateen - Black for background & sashing

# Twelve Moons

Twelve Moons Collection by: Robert Kaufman Fabrics

Quilt Design by: Kari Nichols for Mountainpeek Creations  
Finished Size: 44.5" x 50.5"

**Please Read and Follow Directions Carefully To Ensure a Successful Project!**

## Cutting Instructions:

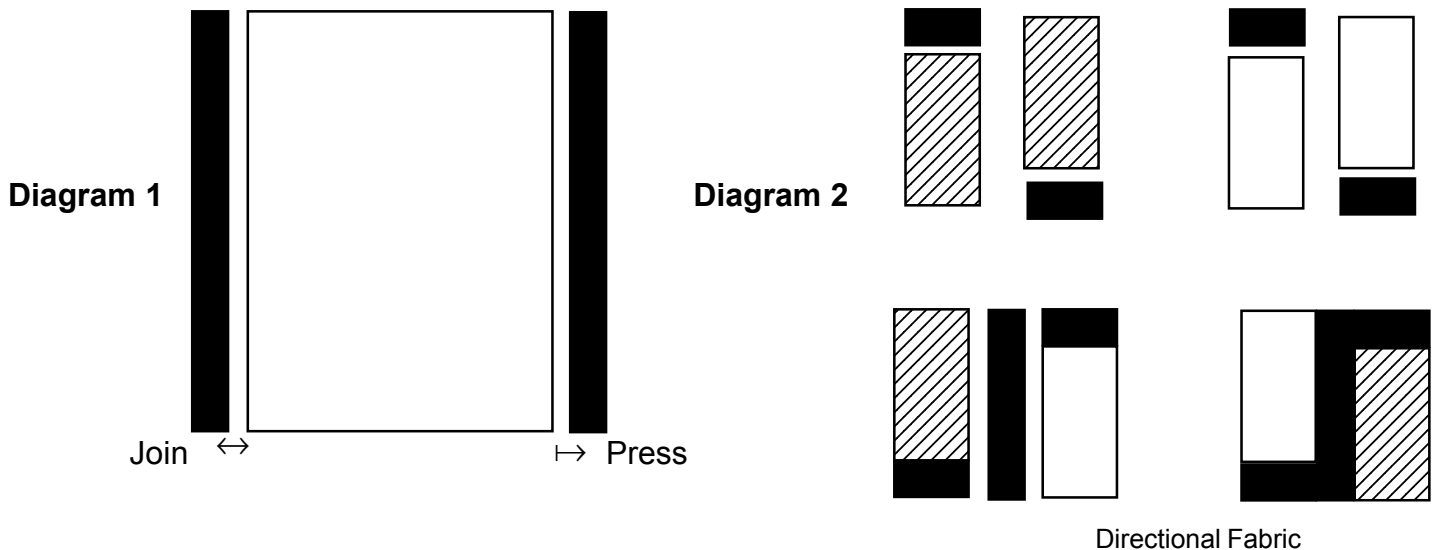
- A. (1) Panel Twelve Moons:  
Center and Cut (1) 16 1/2" x 22 1/2" Center Panel  
Center and Cut (4) 10 1/2" x 10 1/2" Side Squares
- B. (1) Fat Quarter 9608 Swirl:  
Cut (6) 2 1/2" x 10 1/2" strips
- C. (1) Fat Quarter 9607 Floral:  
Cut (2) 4 1/2" x 8 1/2" Rectangles
- D. (1) Fat Quarter 9605 Kanji-gold:  
Cut (2) 4 1/2" x 8 1/2" Rectangles
- E. (1) Fat Quarter 9605 Kanji-red/orange:  
Cut (2) 4 1/2" x 10 1/2" Rectangles
- F. (1) Fat Quarter 9606 Water:  
Cut (2) 9 1/2" Squares
- G. 1 2/3 yds. Black Ultra Sateen:  
(Sashing, Border & Binding)  
Cut (1) 10 1/2" x WOF\*  
Subcut (2) 10 1/2" 10 1/2" Squares  
Subcut (8) 2 1/2" x 10 1/2" Strips  
Cut (16) 2 1/2" x WOF  
Subcut (2) 2 1/2" x 22 1/2"  
Subcut (4) 2 1/2" x 4 1/2"  
Subcut (6) 2 1/2" x 10 1/2"  
Subcut (2) 2 1/2" x 40 1/2"
- H. Backing:  
2 3/4 yds.

**\*WOF = Width of Fabric From Selvage to Selvage.**

**Note:** All measurements are based on a 1/4" seam allowance unless otherwise noted.

## Piecing Instructions:

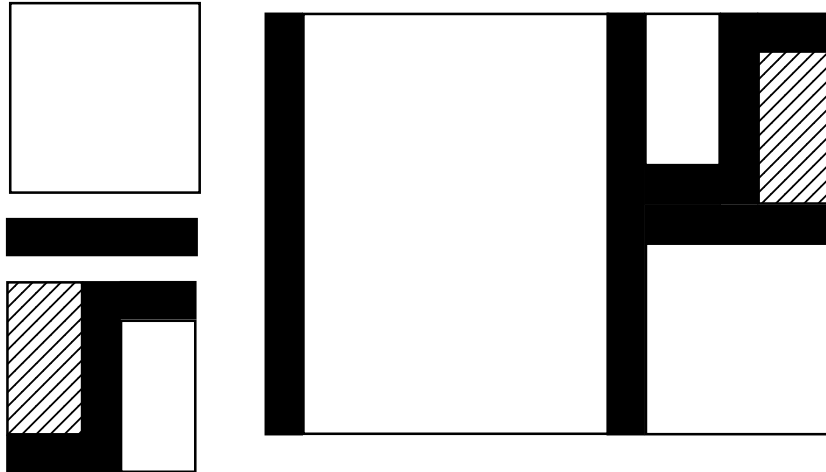
Following Diagram 1, join (G) 2 1/2" x 22 1/2" Sashing to each side of (A) 16 1/2" x 22 1/2" Center Panel. Press seams toward Sashing.



Next, join a (G) 2 1/2" x 4 1/2" Sashing to top of one (C) 4 1/2" x 8 1/2" Floral Rectangle and a (G) 2 1/2" x 4 1/2" Sashing to the bottom of the other (C) 4 1/2" x 8 1/2" Rectangle. Repeat this process with (D) 4 1/2" x 8 1/2" Kanji-gold Rectangles. Following Diagram 2, join a Floral Rectangle and Kanji Rectangle with a (G) 2 1/2" x 10 1/2" Strip. Make (2). Press all seams toward Sashing Strips.

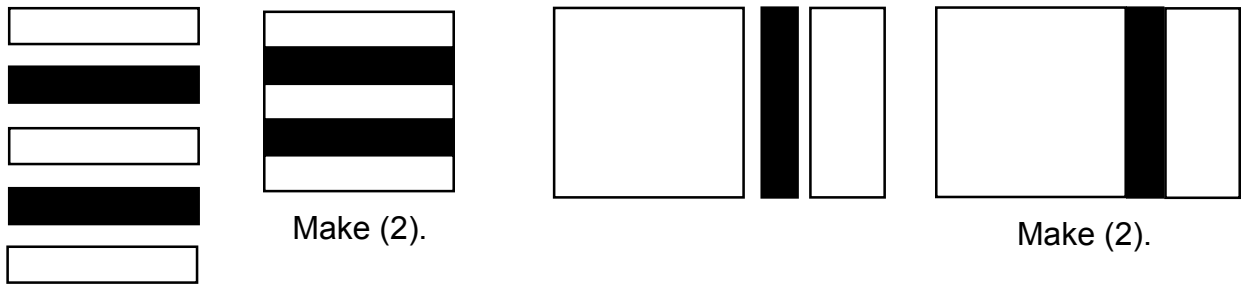
Following Diagram 3, join blocks made in Diagram 2, Pg.1, to a (G) 2 1/2" x 10 1/2" Sashing Strip and (A) 10 1/2" x 10 1/2" Panel Squares. Refer to Quilt Photo and Layout Diagram, Pg. 3, for placement. Press all seams toward Sashing. Attach side panels to Center Panel created in Diagram 1.

**Diagram 3**

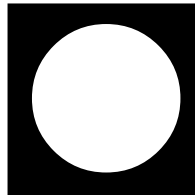


To create your top and bottom sections, follow Diagram 4, join (3) (B) 2 1/2" x 10 1/2" Swirl strips to (2) (G) 2 1/2" x 10 1/2" Sashing strips. Make (2). Press all seams toward Sashing. Next, join an (A) 10 1/2" x 10 1/2" Side Square to a (G) 2 1/2" x 10 1/2" Sashing strip and an (E) 4 1/2" x 10 1/2" Kanji Rectangle. Make (2).

**Diagram 4**

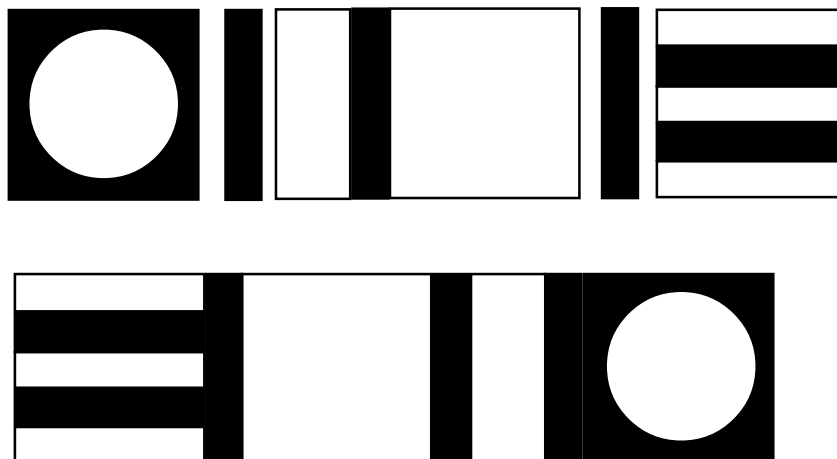


Attach double sided fusible web (or use other favorite method of applique) on back of (F) 9 1/2" Squares and cut (2) 8 1/2" circles, center and adhere circles on (G) 10 1/2" x 10 1/2" Squares. Stitch around circles making sure all edges are covered.



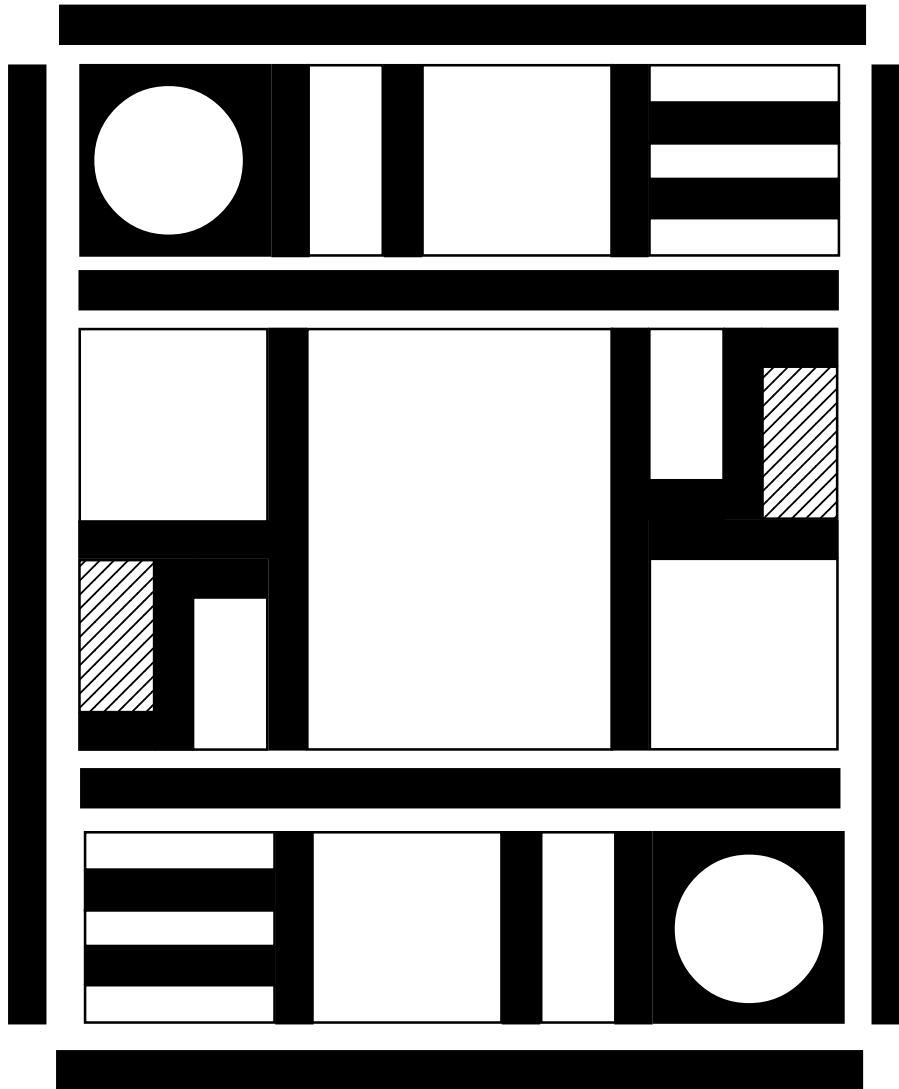
Following Diagram 5, join sets created in Diagram 4 with (2) (G) 2 1/2" x 10 1/2" Sashing strips and (G) 10 1/2" x 10 1/2" appliqued squares. Note reverse placement of sets in top and bottom panels.

**Diagram 5  
Top Panel**



**Layout:**

Join Top, Center and Bottom sections using (G) 2 1/2" x 40 1/2" Sashing strips. Press seams toward Sashing.

**Border:**

To determine the length of your side borders, measure quilt through the middle from top to bottom. Using (G) 2 1/2" Border/Binding strips, join to equal this measurement. Make (2). Attach border strips to sides of quilt. Press seams toward border. Next, measure from side to side in the middle of your quilt to determine the length of your top and bottom borders. Using your remaining (G) 2 1/2" Border/Binding strips, join to equal this measurement. Make (2). Attach to the top and bottom of quilt and press seams toward border.

**Quilting:**

Sandwich your quilt top with batting and backing. Baste layers together and quilt as desired to enhance design.

**Binding:**

Join together (G) 2 1/2" binding strips and bind using your favorite method.